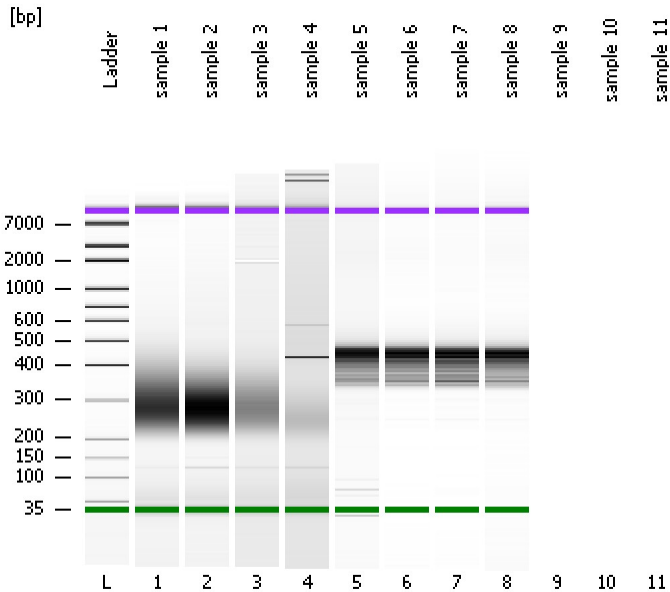


Assay Class: High Sensitivity DNA Assay
Data Path: C:\...ents and Settings\Bioanalyzer\2013-11-18\2013-11-18_003.xad

Created: 11/18/2013 3:20:27 PM
Modified: 11/18/2013 3:53:33 PM

Electrophoresis File Run Summary



Instrument Information:

Instrument Name: DE13701086 Firmware: C.01.069
Serial#: DE13701086 Type: G2938B

Assay Information:

Assay Origin Path: C:\Program Files\Agilent\2100 bioanalyzer\2100 expert\assays\dsDNA\High Sensitivity DNA.xsy
Assay Class: High Sensitivity DNA Assay
Version: 1.03
Assay Comments: Copyright © 2003-2010 Agilent Technologies

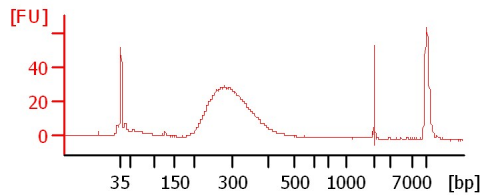
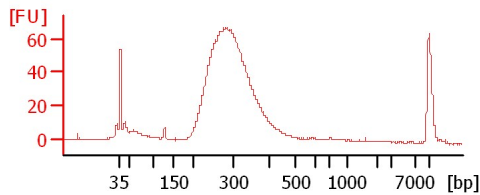
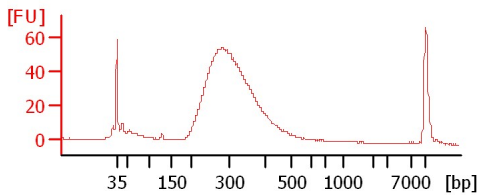
Chip Information:

Chip Lot #:
Reagent Kit Lot #:
Chip Comments:

sample 1

sample 2

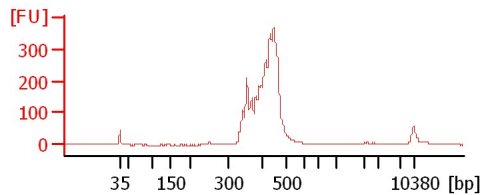
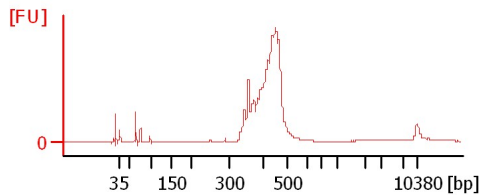
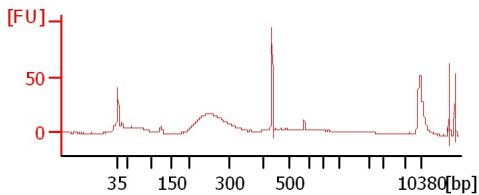
sample 3



sample 4

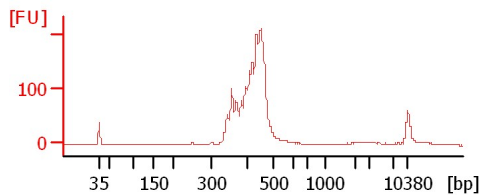
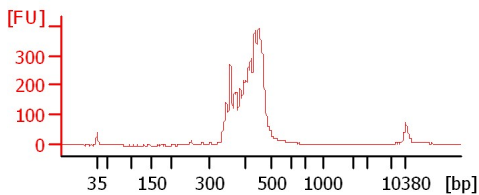
sample 5

sample 6



sample 7

sample 8



Assay Class: High Sensitivity DNA Assay
Data Path: C:\...ents and Settings\Bioanalyzer\2013-11-18\2013-11-18_003.xad

Created: 11/18/2013 3:20:27 PM
Modified: 11/18/2013 3:53:33 PM

Electrophoresis File Run Summary (Chip Summary)

Sample Name	Sample Comment	Rest. Digest	Status	Observation	Result Label	Result Color
sample 1		<input type="checkbox"/>	✓			
sample 2		<input type="checkbox"/>	✓			
sample 3		<input type="checkbox"/>	✓			
sample 4		<input type="checkbox"/>	✓			
sample 5		<input type="checkbox"/>	✓			
sample 6		<input type="checkbox"/>	✓			
sample 7		<input type="checkbox"/>	✓			
sample 8		<input type="checkbox"/>	✓			
sample 9		<input type="checkbox"/>				
sample 10		<input type="checkbox"/>				
sample 11		<input type="checkbox"/>				
Ladder		<input type="checkbox"/>	✓			

Chip Lot #

Reagent Kit Lot #

Chip Comments :

Assay Class: High Sensitivity DNA Assay
Data Path: C:\...ents and Settings\Bioanalyzer\2013-11-18\2013-11-18_003.xad

Created: 11/18/2013 3:20:27 PM
Modified: 11/18/2013 3:53:33 PM

Electrophoresis Assay Details

General Analysis Settings

Number of Available Sample and Ladder Wells (Max.) : 12
Minimum Visible Range [s] : 32
Maximum Visible Range [s] : 138
Start Analysis Time Range [s] : 33
End Analysis Time Range [s] : 137.5
Ladder Concentration [pg/μl] : 1950
Uses Standard Area for Ladder Fragments
Lower Marker Concentration [pg/μl] : 125
Upper Marker Concentration [pg/μl] : 75
Used Upper Marker for Quantitation
Standard Curve Fit is Point to Point
Show Data Aligned to Lower and Upper Marker

Integrator Settings

Integration Start Time [s] : 33.05
Integration End Time [s] : 137
Slope Threshold : 0.8
Height Threshold [FU] : 5
Area Threshold : 0.1
Width Threshold [s] : 0.6
Baseline Plateau [s] : 0.5

Filter Settings

Filter Width [s] : 0.5
Polynomial Order : 4

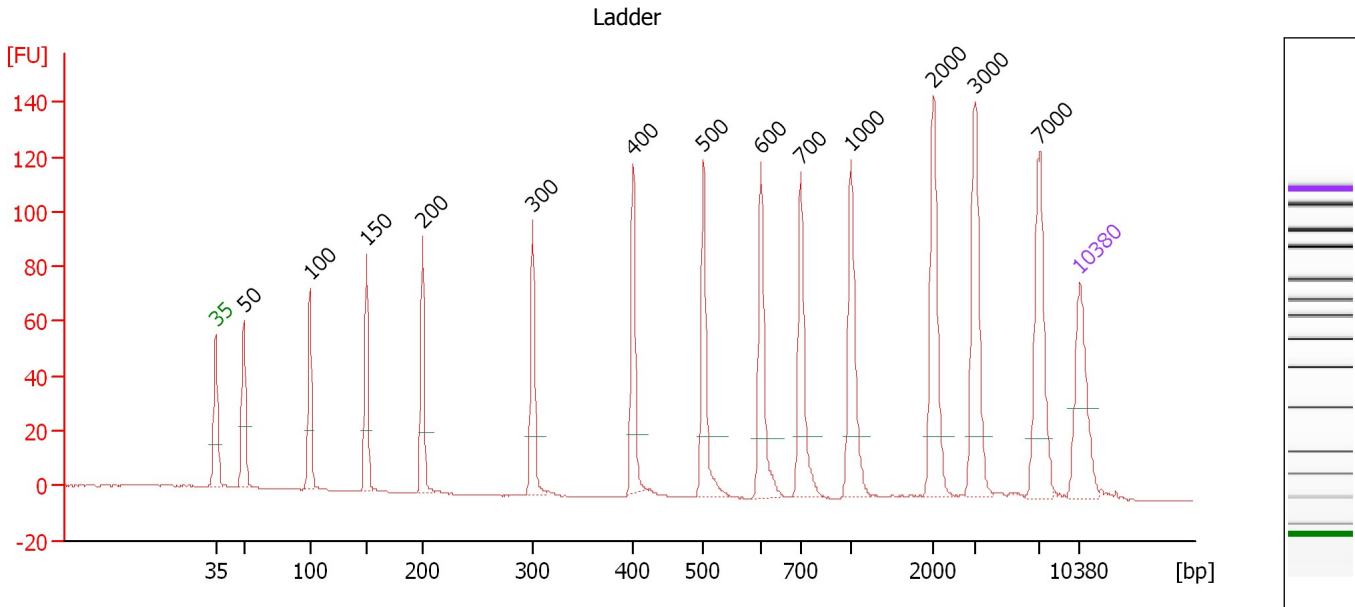
Ladder

Ladder Peak	Size	Area
1	35	160
2	50	210
3	100	208
4	150	221
5	200	242
6	300	270
7	400	305
8	500	306
9	600	336
10	700	321
11	1000	366
12	2000	413
13	3000	411
14	7000	400
15	10380	214

Assay Class: High Sensitivity DNA Assay
 Data Path: C:\...ents and Settings\Bioanalyzer\2013-11-18\2013-11-18_003.xad

Created: 11/18/2013 3:20:27 PM
 Modified: 11/18/2013 3:53:33 PM

Electropherogram Summary



Overall Results for Ladder

Noise: 0.1

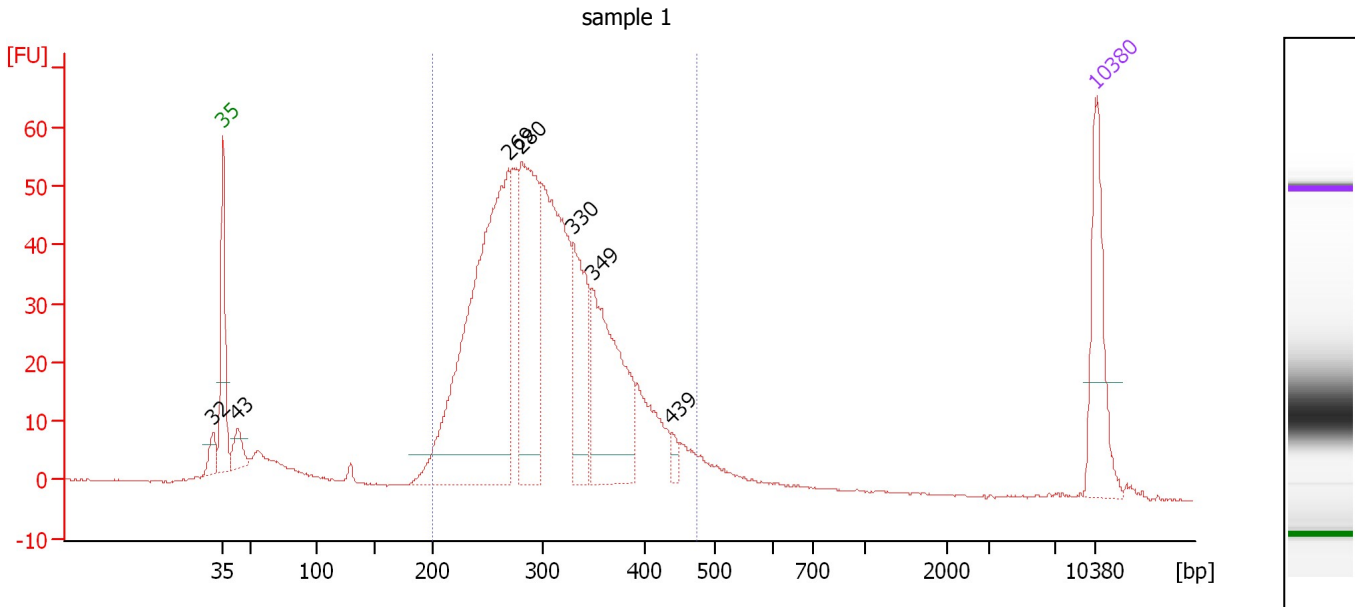
Peak table for Ladder

Peak	Aligned Migration Time [s]	Size [bp]	Conc. [pg/μl]	Molarity [pmol/l]	Observations
1	43.00	35	125.00	5,411.3	Lower Marker
2	45.25	50	150.00	4,545.5	Ladder Peak
3	50.60	100	150.00	2,272.7	Ladder Peak
4	55.22	150	150.00	1,515.2	Ladder Peak
5	59.76	200	150.00	1,136.4	Ladder Peak
6	68.65	300	150.00	757.6	Ladder Peak
7	76.77	400	150.00	568.2	Ladder Peak
8	82.51	500	150.00	454.5	Ladder Peak
9	87.13	600	150.00	378.8	Ladder Peak
10	90.37	700	150.00	324.7	Ladder Peak
11	94.43	1,000	150.00	227.3	Ladder Peak
12	101.08	2,000	150.00	113.6	Ladder Peak
13	104.49	3,000	150.00	75.8	Ladder Peak
14	109.72	7,000	150.00	32.5	Ladder Peak
15	113.00	10,380	75.00	10.9	Upper Marker

Assay Class: High Sensitivity DNA Assay
 Data Path: C:\...ents and Settings\Bioanalyzer\2013-11-18\2013-11-18_003.xad

Created: 11/18/2013 3:20:27 PM
 Modified: 11/18/2013 3:53:33 PM

Electropherogram Summary Continued ...



Overall Results for sample 1 : sample 1

Number of peaks found: 7 Corr. Area 1: 993.5
 Noise: 0.1

Peak table for sample 1 : sample 1

Peak	Aligned Migration Time [s]	Size [bp]	Conc. [pg/μl]	Molarity [pmol/l]	Observations
1	42.19	32	0.00	0.0	
2	43.00	35	125.00	5,411.3	Lower Marker
3	44.15	43	32.31	1,146.2	
4	65.92	269	562.04	3,162.2	
5	66.90	280	252.92	1,366.9	
6	71.09	330	122.02	560.1	
7	72.63	349	197.60	857.7	
8	79.00	439	9.35	32.3	
9	113.00	10,380	75.00	10.9	Upper Marker

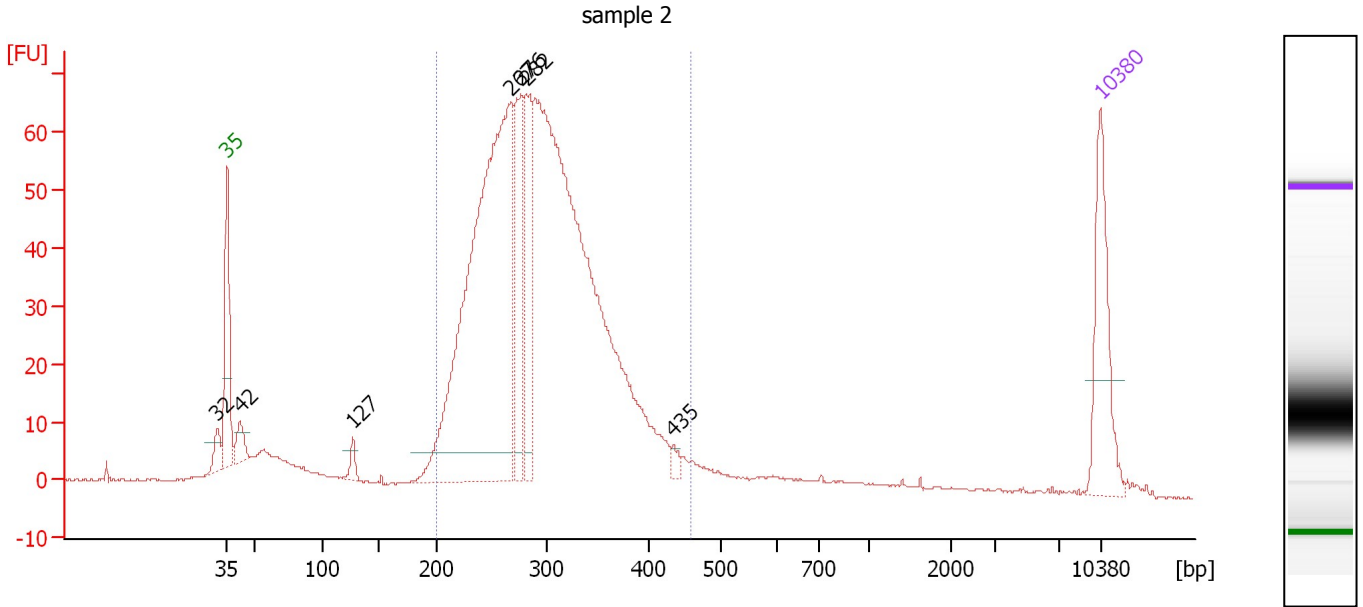
Region table for sample 1 : sample 1

From [bp]	To [bp]	Average Size [bp]	Molarity [pmol/l]	Conc. [pg/μl]	Corr. Area	% of Total	Size distribution in CV [%]	Color
200	475	306	8,682.1	1,682.54	993.5	87	18.5	Blue

Assay Class: High Sensitivity DNA Assay
 Data Path: C:\...ents and Settings\Bioanalyzer\2013-11-18\2013-11-18_003.xad

Created: 11/18/2013 3:20:27 PM
 Modified: 11/18/2013 3:53:33 PM

Electropherogram Summary Continued ...



Overall Results for sample 2 : sample 2

Number of peaks found: 7 Corr. Area 1: 1,131.5
 Noise: 0.2

Peak table for sample 2 : sample 2

Peak	Aligned Migration Time [s]	Size [bp]	Conc. [pg/μl]	Molarity [pmol/l]	Observations
1	42.23	32	0.00	0.0	
2	43.00	35	125.00	5,411.3	Lower Marker
3	44.03	42	26.58	962.2	
4	53.09	127	13.54	161.6	
5	65.69	267	695.64	3,951.4	
6	66.55	276	128.66	705.4	
7	67.02	282	127.35	685.1	
8	78.77	435	7.86	27.4	
9	113.00	10,380	75.00	10.9	Upper Marker

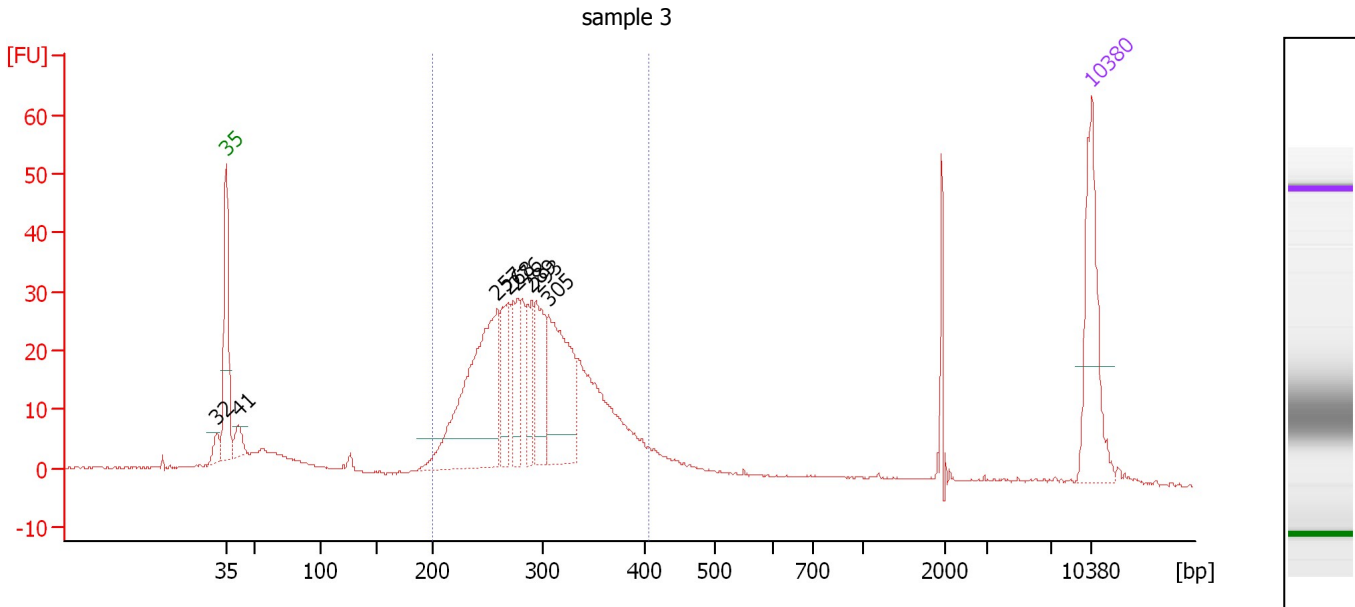
Region table for sample 2 : sample 2

From [bp]	To [bp]	Average Size [bp]	Molarity [pmol/l]	Conc. [pg/μl]	Corr. Area	% of Total	Size distribution in CV [%]	Color
200	460	296	10,142.8	1,913.79	1,131.5	87	17.2	Blue

Assay Class: High Sensitivity DNA Assay
 Data Path: C:\...ents and Settings\Bioanalyzer\2013-11-18\2013-11-18_003.xad

Created: 11/18/2013 3:20:27 PM
 Modified: 11/18/2013 3:53:33 PM

Electropherogram Summary Continued ...



Overall Results for sample 3 : sample 3

Number of peaks found: 8 Corr. Area 1: 492.1
 Noise: 0.1

Peak table for sample 3 : sample 3

Peak	Aligned Migration Time [s]	Size [bp]	Conc. [pg/μl]	Molarity [pmol/l]	Observations
1	42.22	32	0.00	0.0	
2	43.00	35	125.00	5,411.3	Lower Marker
3	43.95	41	22.35	819.3	
4	64.87	257	243.30	1,431.8	
5	65.82	268	57.98	327.6	
6	66.55	276	55.11	302.1	
7	67.67	289	45.74	239.8	
8	68.06	293	71.96	371.7	
9	69.05	305	142.54	708.3	
10	113.00	10,380	75.00	10.9	Upper Marker

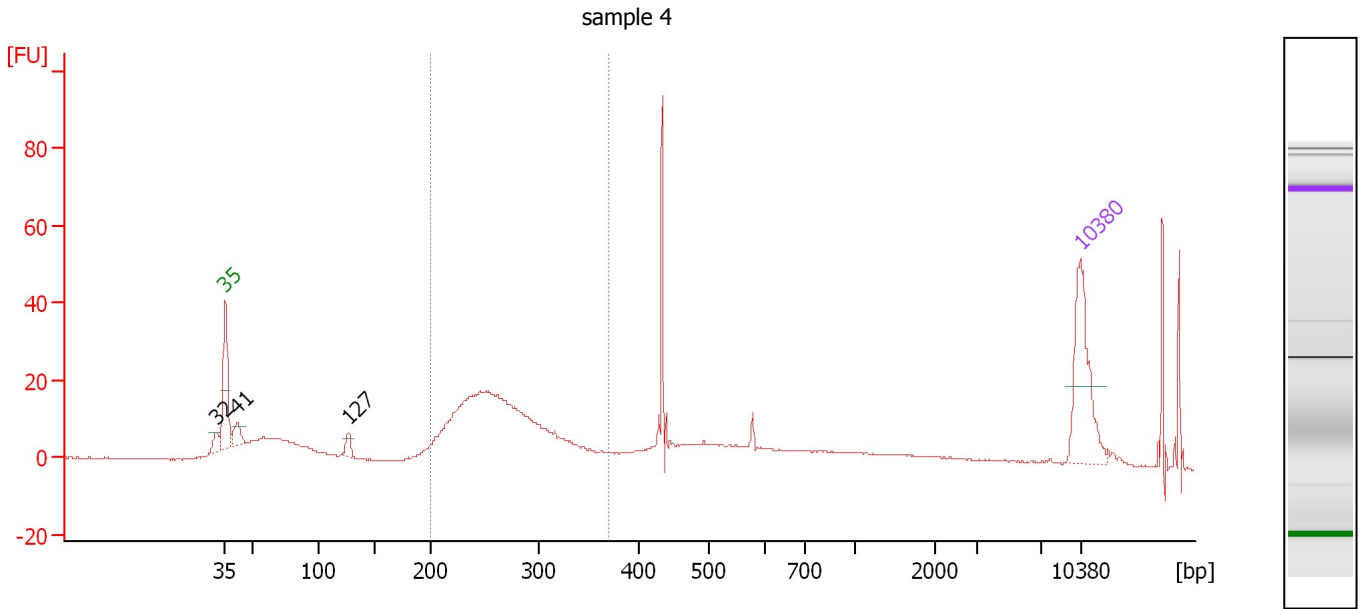
Region table for sample 3 : sample 3

From [bp]	To [bp]	Average Size [bp]	Molarity [pmol/l]	Conc. [pg/μl]	Corr. Area	% of Total	Size distribution in CV [%]	Color
200	407	293	4,706.0	885.94	492.1	79	15.8	Blue

Assay Class: High Sensitivity DNA Assay
 Data Path: C:\...ents and Settings\Bioanalyzer\2013-11-18\2013-11-18_003.xad

Created: 11/18/2013 3:20:27 PM
 Modified: 11/18/2013 3:53:33 PM

Electropherogram Summary Continued ...



Overall Results for sample 4 : sample 4

Number of peaks found: 3 Corr. Area 1: 232.5
 Noise: 0.2

Peak table for sample 4 : sample 4

Peak	Aligned Migration Time [s]	Size [bp]	Conc. [pg/μl]	Molarity [pmol/l]	Observations
1	42.26	32	0.00	0.0	
2	43.00	35	125.00	5,411.3	Lower Marker
3	43.96	41	23.47	858.8	
4	53.07	127	14.16	169.2	
5	113.00	10,380	75.00	10.9	Upper Marker

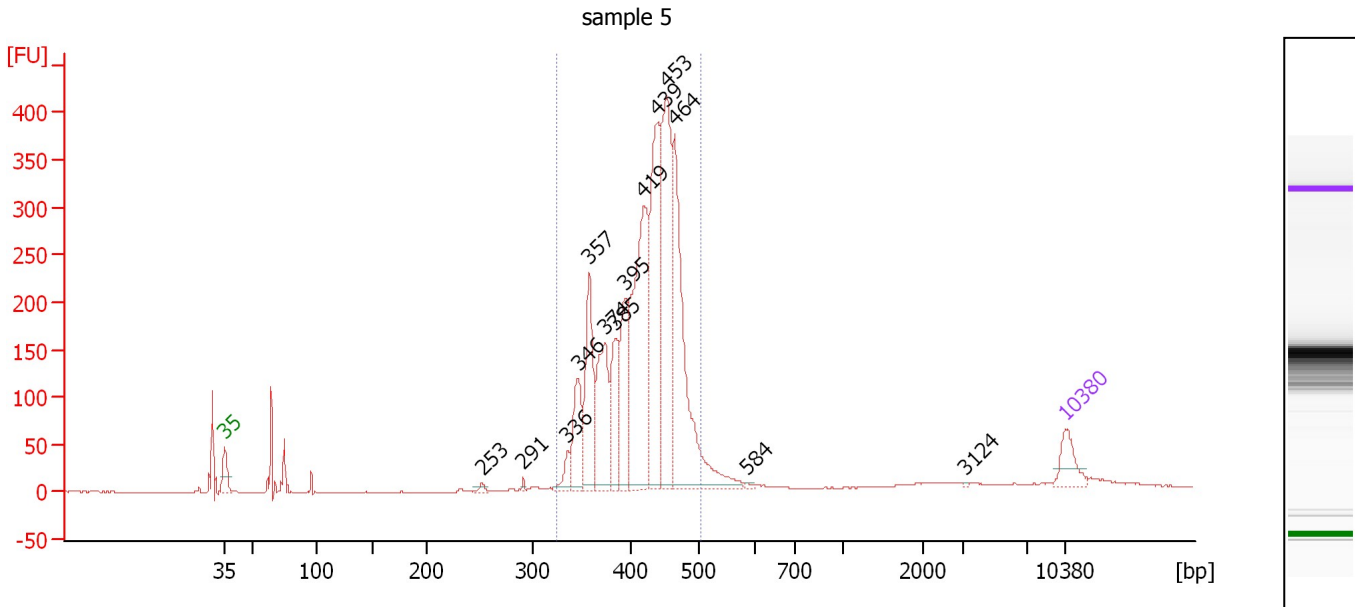
Region table for sample 4 : sample 4

From [bp]	To [bp]	Average Size [bp]	Molarity [pmol/l]	Conc. [pg/μl]	Corr. Area	% of Total	Size distribution in CV [%]	Color
200	370	267	2,594.8	449.21	232.5	45	14.3	Blue

Assay Class: High Sensitivity DNA Assay
 Data Path: C:\...ents and Settings\Bioanalyzer\2013-11-18\2013-11-18_003.xad

Created: 11/18/2013 3:20:27 PM
 Modified: 11/18/2013 3:53:33 PM

Electropherogram Summary Continued ...



Overall Results for sample 5 : sample 5

Number of peaks found: 14 Corr. Area 1: 2,949.4
 Noise: 0.1

Peak table for sample 5 : sample 5

Peak	Aligned Migration Time [s]	Size [bp]	Conc. [pg/μl]	Molarity [pmol/l]	Observations
1	43.00	35	125.00	5,411.3	Lower Marker
2	64.44	253	14.66	87.9	
3	67.86	291	8.57	44.6	
4	71.54	336	52.40	236.6	
5	72.38	346	206.35	903.6	
6	73.32	357	330.46	1,400.6	
7	74.65	374	323.11	1,309.4	
8	75.54	385	213.60	841.0	
9	76.34	395	260.04	998.3	
10	77.84	419	782.25	2,830.6	
11	79.00	439	590.49	2,038.8	
12	79.80	453	675.16	2,259.5	
13	80.42	464	774.85	2,532.7	
14	86.41	584	5.55	14.4	
15	104.66	3,124	2.71	1.3	
16	113.00	10,380	75.00	10.9	Upper Marker

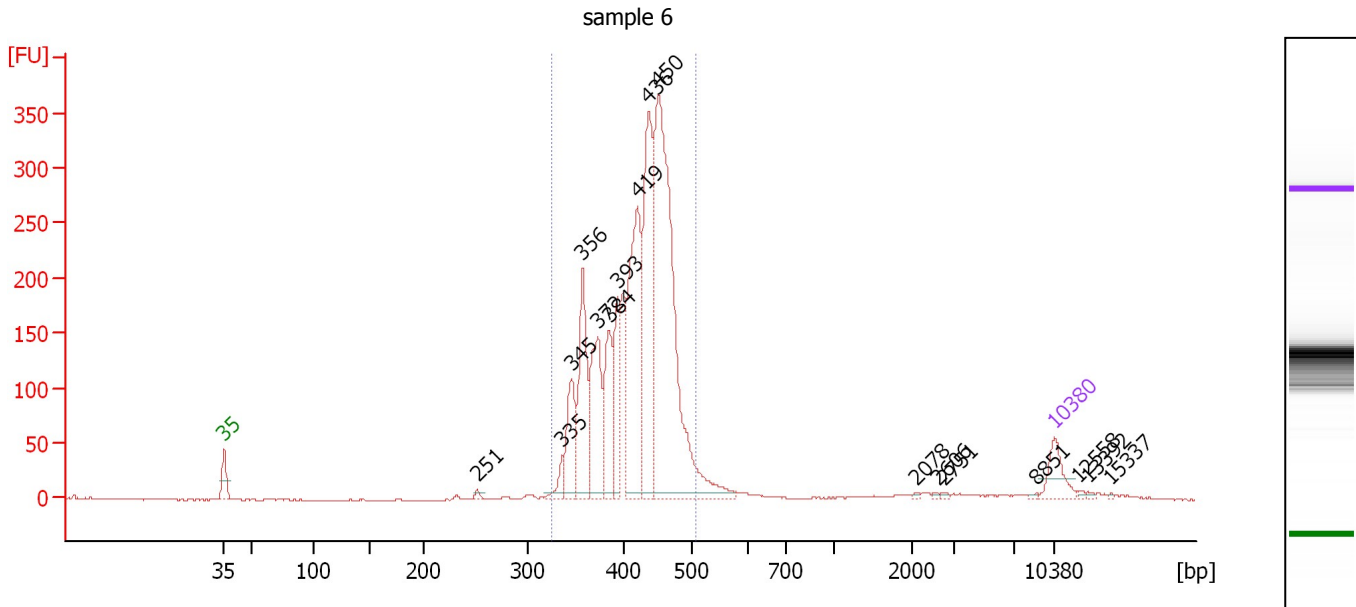
Region table for sample 5 : sample 5

From [bp]	To [bp]	Average Size [bp]	Molarity [pmol/l]	Conc. [pg/μl]	Corr. Area	% of Total	Size distribution in CV [%]	Color
323	504	420	15,059.6	4,127.85	2,949.4	90	9.6	Blue

Assay Class: High Sensitivity DNA Assay
 Data Path: C:\...ents and Settings\Bioanalyzer\2013-11-18\2013-11-18_003.xad

Created: 11/18/2013 3:20:27 PM
 Modified: 11/18/2013 3:53:33 PM

Electropherogram Summary Continued ...



Overall Results for sample 6 : sample 6

Number of peaks found: 17 Corr. Area 1: 2,633.0
 Noise: 0.6

Peak table for sample 6 : sample 6

Peak	Aligned Migration Time [s]	Size [bp]	Conc. [pg/μl]	Molarity [pmol/l]	Observations
1	43.00	35	125.00	5,411.3	Lower Marker
2	64.32	251	10.24	61.7	
3	71.52	335	47.25	213.5	
4	72.29	345	208.40	915.8	
5	73.23	356	336.23	1,429.3	
6	74.54	372	319.46	1,299.4	
7	75.48	384	239.74	945.6	
8	76.20	393	213.82	824.4	
9	77.87	419	595.49	2,153.0	
10	78.81	436	605.05	2,104.9	
11	79.62	450	1,375.66	4,635.7	
12	101.35	2,078	3.79	2.8	
13	103.15	2,606	3.98	2.3	
14	103.64	2,751	4.38	2.4	
15	111.52	8,851	3.97	0.7	
16	113.00	10,380	75.00	10.9	Upper Marker
17	115.11	12,558	0.00	0.0	
18	115.92	13,392	0.00	0.0	
19	117.81	15,337	0.00	0.0	

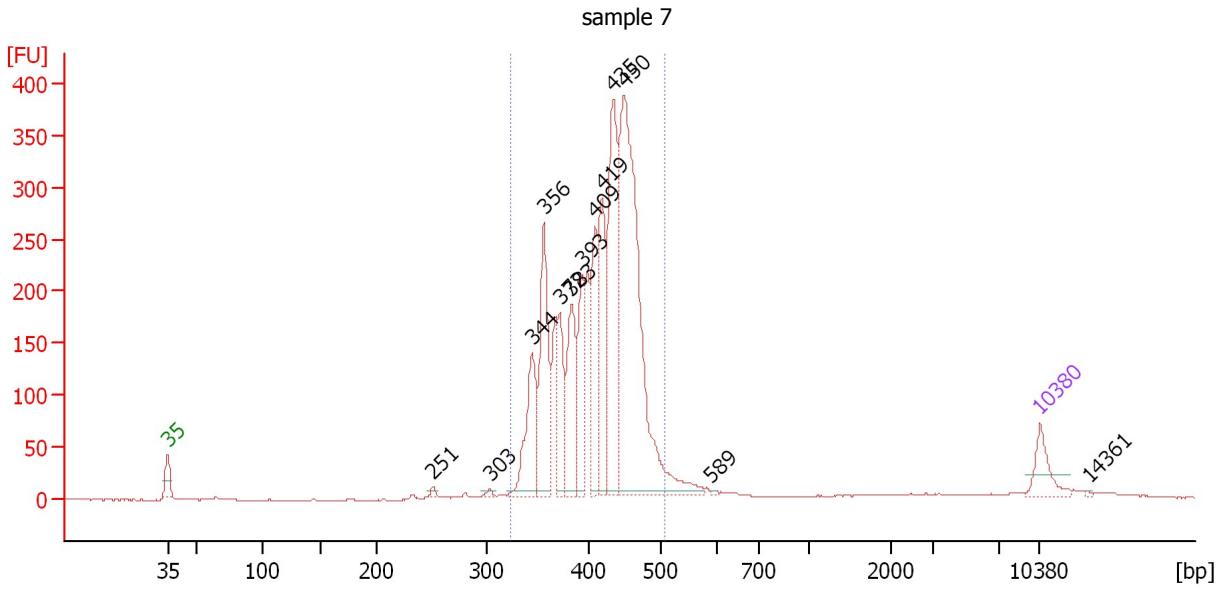
Region table for sample 6 : sample 6

From [bp]	To [bp]	Average Size [bp]	Molarity [pmol/l]	Conc. [pg/μl]	Corr. Area	% of Total	Size distribution in CV [%]	Color
323	507	418	14,706.9	4,012.53	2,633.0	94	9.8	Blue

Assay Class: High Sensitivity DNA Assay
 Data Path: C:\...ents and Settings\Bioanalyzer\2013-11-18\2013-11-18_003.xad

Created: 11/18/2013 3:20:27 PM
 Modified: 11/18/2013 3:53:33 PM

Electropherogram Summary Continued ...



Overall Results for sample 7 : sample 7

Number of peaks found: 13 Corr. Area 1: 2,930.1
 Noise: 0.4

Peak table for sample 7 : sample 7

Peak	Aligned Migration Time [s]	Size [bp]	Conc. [pg/μl]	Molarity [pmol/l]	Observations
1	43.00	35	125.00	5,411.3	Lower Marker
2	64.31	251	10.03	60.5	
3	68.86	303	8.65	43.3	
4	72.22	344	279.57	1,231.3	
5	73.19	356	384.44	1,636.5	
6	74.48	372	176.72	720.2	
7	75.40	383	272.26	1,076.7	
8	76.23	393	225.40	868.3	
9	77.29	409	259.07	959.7	
10	77.84	419	328.29	1,188.2	
11	78.76	435	570.77	1,989.7	
12	79.63	450	1,293.68	4,357.0	
13	86.63	589	4.19	10.8	
14	113.00	10,380	75.00	10.9	Upper Marker
15	116.87	14,361	0.00	0.0	

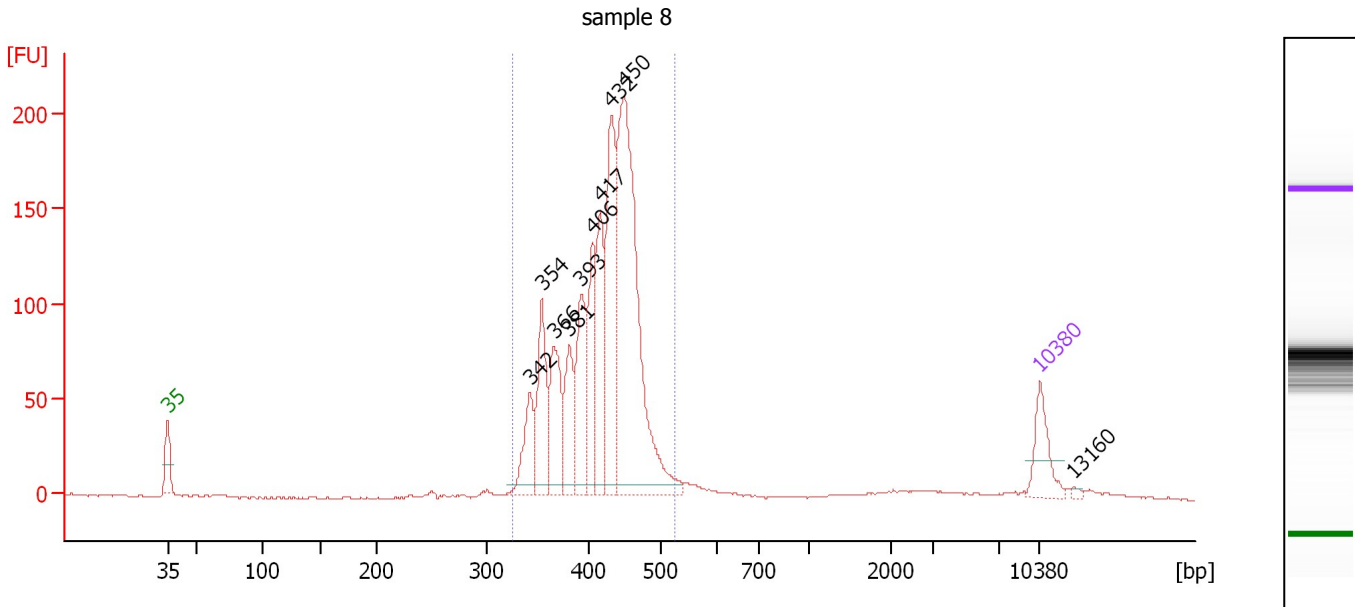
Region table for sample 7 : sample 7

From [bp]	To [bp]	Average Size [bp]	Molarity [pmol/l]	Conc. [pg/μl]	Corr. Area	% of Total	Size distribution in CV [%]	Color
323	509	415	15,179.8	4,107.35	2,930.1	93	10.0	Blue

Assay Class: High Sensitivity DNA Assay
 Data Path: C:\...ents and Settings\Bioanalyzer\2013-11-18\2013-11-18_003.xad

Created: 11/18/2013 3:20:27 PM
 Modified: 11/18/2013 3:53:33 PM

Electropherogram Summary Continued ...



Overall Results for sample 8 : sample 8

Number of peaks found: 10 Corr. Area 1: 1,451.7
 Noise: 0.5

Peak table for sample 8 : sample 8

Peak	Aligned Migration Time [s]	Size [bp]	Conc. [pg/μl]	Molarity [pmol/l]	Observations
1	43.00	35	125.00	5,411.3	Lower Marker
2	72.09	342	119.62	529.4	
3	73.02	354	183.54	786.0	
4	74.00	366	166.60	689.9	
5	75.21	381	128.96	513.2	
6	76.18	393	195.66	754.7	
7	77.12	406	168.63	629.2	
8	77.72	417	194.16	706.2	
9	78.61	432	343.37	1,204.4	
10	79.63	450	794.34	2,675.8	
11	113.00	10,380	75.00	10.9	Upper Marker
12	115.70	13,160	0.00	0.0	

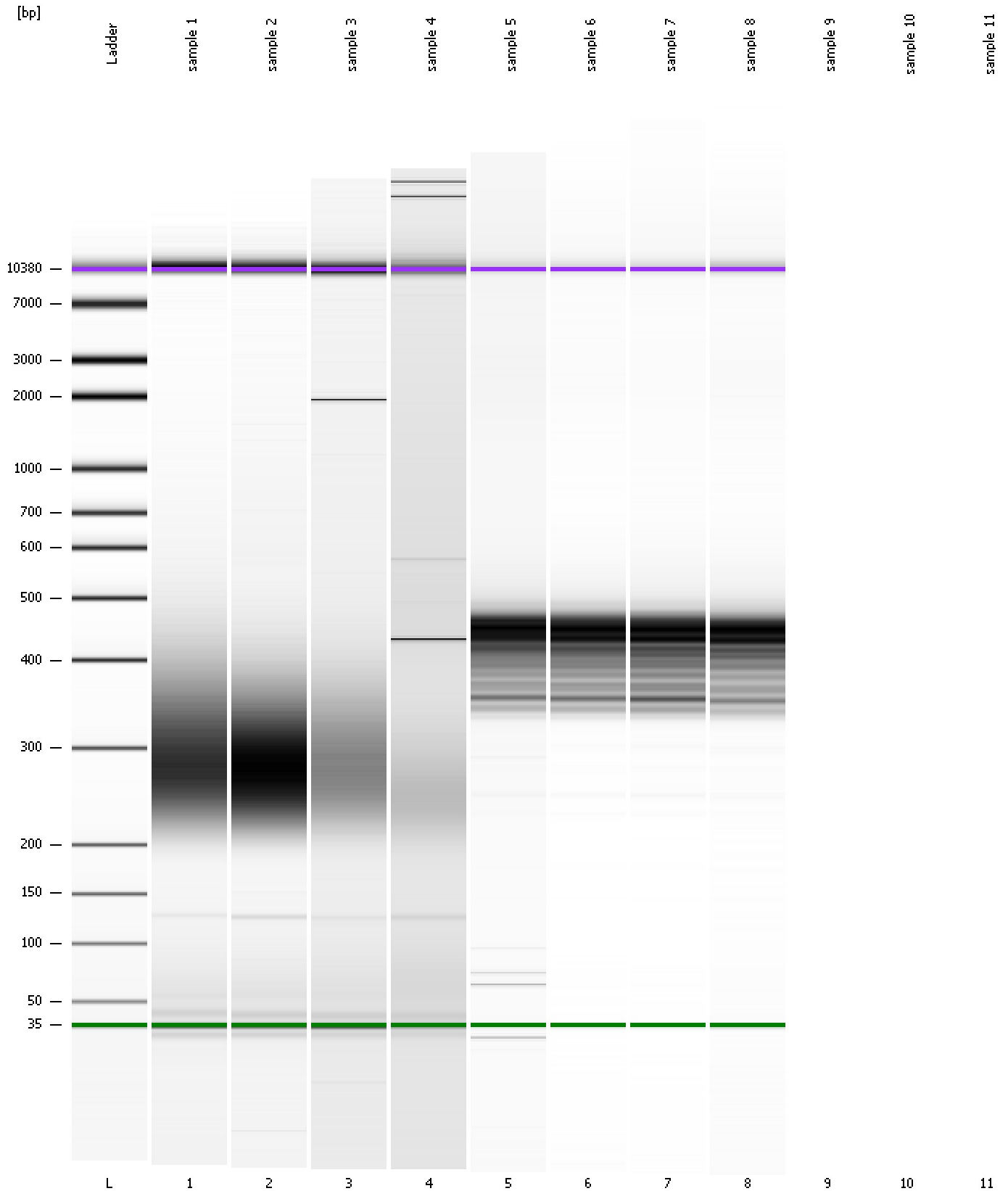
Region table for sample 8 : sample 8

From [bp]	To [bp]	Average Size [bp]	Molarity [pmol/l]	Conc. [pg/μl]	Corr. Area	% of Total	Size distribution in CV [%]	Color
325	525	418	8,440.6	2,302.45	1,451.7	94	9.8	Blue

Assay Class: High Sensitivity DNA Assay
Data Path: C:\...ents and Settings\Bioanalyzer\2013-11-18\2013-11-18_003.xad

Created: 11/18/2013 3:20:27 PM
Modified: 11/18/2013 3:53:33 PM

Gel Image



Assay Class: High Sensitivity DNA Assay
Data Path: C:\...ents and Settings\Bioanalyzer\2013-11-18\2013-11-18_003.xad

Created: 11/18/2013 3:20:27 PM
Modified: 11/18/2013 3:53:33 PM

Invalid Samples

Sample 9 has not been run, no results available.

Sample 10 has not been run, no results available.

Sample 11 has not been run, no results available.