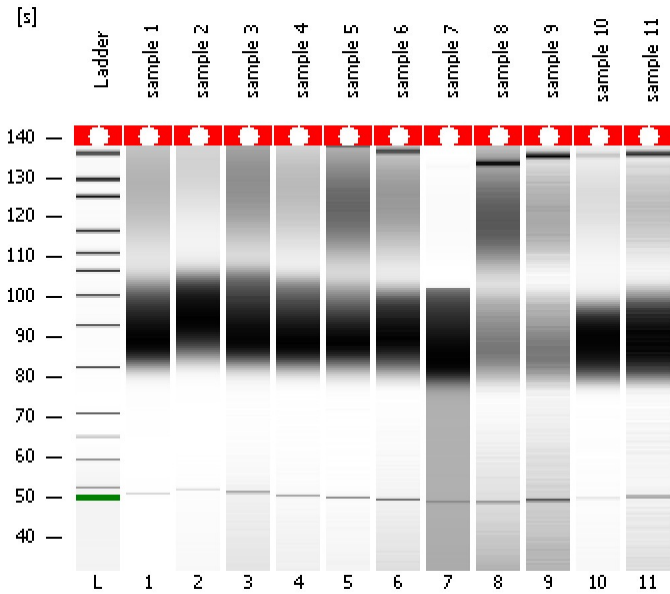


Assay Class: High Sensitivity DNA Assay
Data Path: C:\...ents and Settings\Bioanalyzer\2013-11-21\2013-11-21_002.xad

Created: 11/21/2013 2:03:32 PM
Modified: 11/21/2013 2:44:53 PM

Electrophoresis File Run Summary



Instrument Information:

Instrument Name: DE13701086 Firmware: C.01.069
Serial#: DE13701086 Type: G2938B

Assay Information:

Assay Origin Path: C:\Program Files\Agilent\2100 bioanalyzer\2100 expert\assays\dsDNA\High Sensitivity DNA.xsy
Assay Class: High Sensitivity DNA Assay
Version: 1.03
Assay Comments: Copyright © 2003-2010 Agilent Technologies

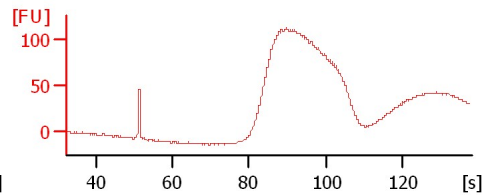
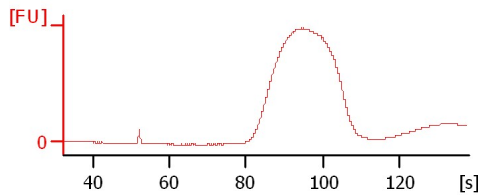
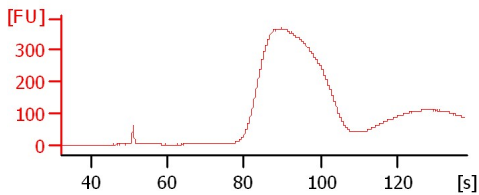
Chip Information:

Chip Lot #: Reagent Kit Lot #: Chip Comments:

sample 1

sample 2

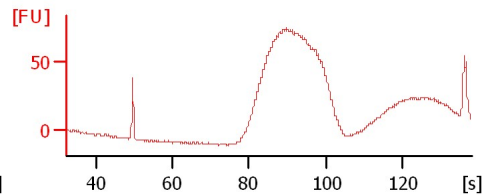
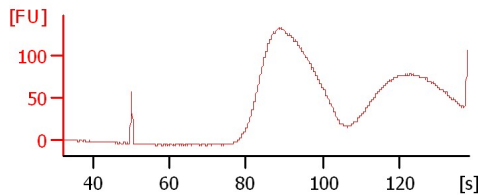
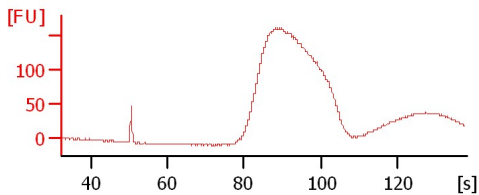
sample 3



sample 4

sample 5

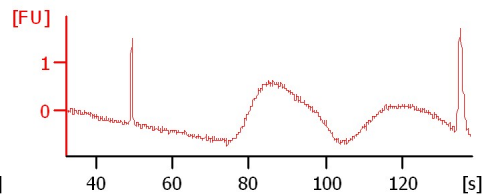
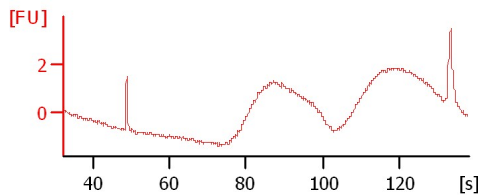
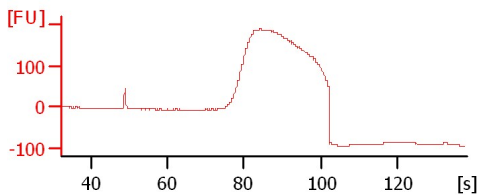
sample 6



sample 7

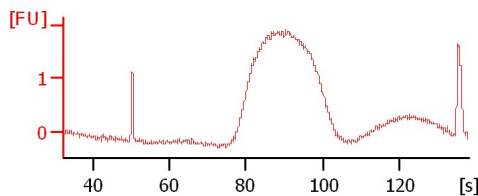
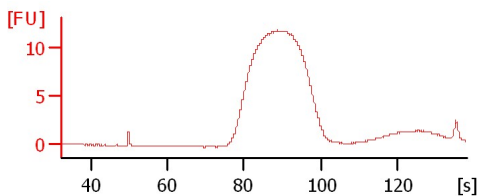
sample 8

sample 9



sample 10

sample 11



Assay Class: High Sensitivity DNA Assay
 Data Path: C:\...ents and Settings\Bioanalyzer\2013-11-21\2013-11-21_002.xad

Created: 11/21/2013 2:03:32 PM
 Modified: 11/21/2013 2:44:53 PM

Electrophoresis File Run Summary (Chip Summary)

Sample Name	Sample Comment	Rest. Digest	Status	Observation	Result Label	Result Color
sample 1		<input type="checkbox"/>	✓			
sample 2		<input type="checkbox"/>	✓			
sample 3		<input type="checkbox"/>	✓			
sample 4		<input type="checkbox"/>	✓			
sample 5		<input type="checkbox"/>	✓			
sample 6		<input type="checkbox"/>	✓			
sample 7		<input type="checkbox"/>	✓			
sample 8		<input type="checkbox"/>	✓			
sample 9		<input type="checkbox"/>	✓			
sample 10		<input type="checkbox"/>	✓			
sample 11		<input type="checkbox"/>	✓			
Ladder		<input type="checkbox"/>	✓			

Chip Lot #

Reagent Kit Lot #

Chip Comments :

Assay Class: High Sensitivity DNA Assay
Data Path: C:\...ents and Settings\Bioanalyzer\2013-11-21\2013-11-21_002.xad

Created: 11/21/2013 2:03:32 PM
Modified: 11/21/2013 2:44:53 PM

Electrophoresis Assay Details

General Analysis Settings

Number of Available Sample and Ladder Wells (Max.) : 12
Minimum Visible Range [s] : 32
Maximum Visible Range [s] : 138
Start Analysis Time Range [s] : 33
End Analysis Time Range [s] : 137.5
Ladder Concentration [pg/μl] : 1950
Uses Standard Area for Ladder Fragments
Lower Marker Concentration [pg/μl] : 125
Upper Marker Concentration [pg/μl] : 75
Used Upper Marker for Quantitation
Standard Curve Fit is Point to Point
Show Data Aligned to Lower and Upper Marker

Integrator Settings

Integration Start Time [s] : 33.05
Integration End Time [s] : 137
Slope Threshold : 0.8
Height Threshold [FU] : 5
Area Threshold : 0.1
Width Threshold [s] : 0.6
Baseline Plateau [s] : 0.5

Filter Settings

Filter Width [s] : 0.5
Polynomial Order : 4

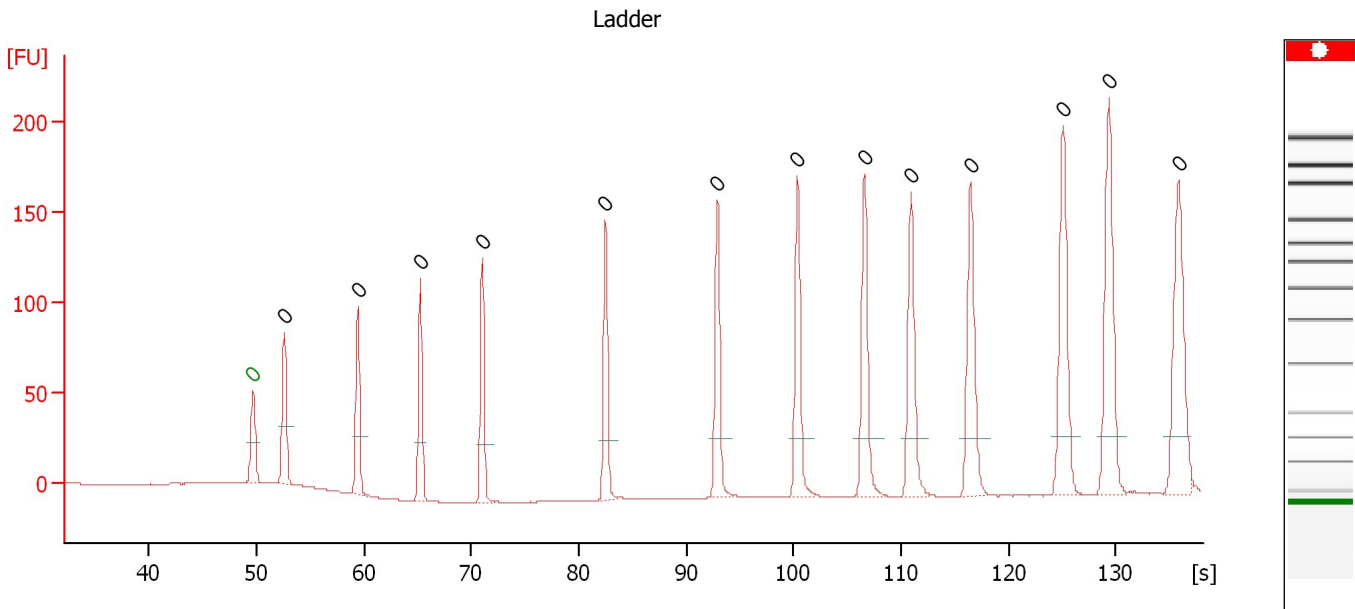
Ladder

Ladder Peak	Size	Area
1	35	160
2	50	210
3	100	208
4	150	221
5	200	242
6	300	270
7	400	305
8	500	306
9	600	336
10	700	321
11	1000	366
12	2000	413
13	3000	411
14	7000	400
15	10380	214

Assay Class: High Sensitivity DNA Assay
 Data Path: C:\...ents and Settings\Bioanalyzer\2013-11-21\2013-11-21_002.xad

Created: 11/21/2013 2:03:32 PM
 Modified: 11/21/2013 2:44:53 PM

Electropherogram Summary



Overall Results for Ladder

Noise: 0.1

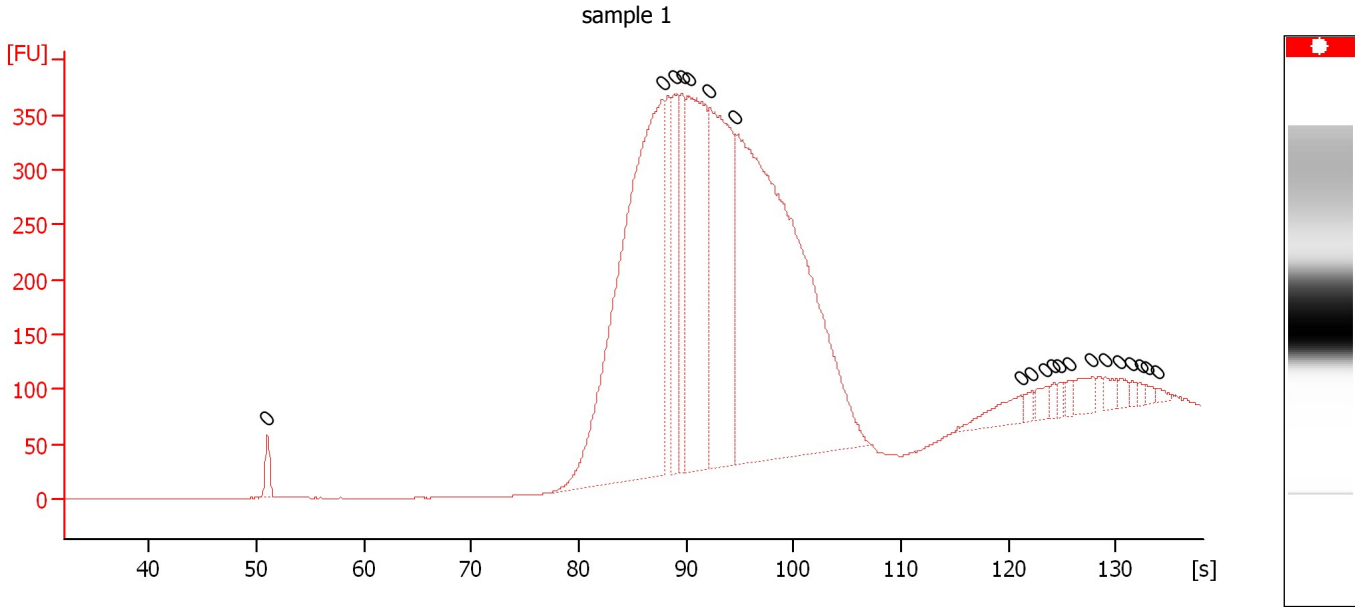
Peak table for Ladder

Peak	Aligned Migration Time [s]	Size [bp]	Conc. [pg/μl]	Molarity [pmol/l]	Observations
1	49.65	0	0.00	0.0	Lower Marker
2	52.60	0	0.00	0.0	Ladder Peak
3	59.40	0	0.00	0.0	Ladder Peak
4	65.25	0	0.00	0.0	Ladder Peak
5	71.05	0	0.00	0.0	Ladder Peak
6	82.50	0	0.00	0.0	Ladder Peak
7	92.90	0	0.00	0.0	Ladder Peak
8	100.35	0	0.00	0.0	Ladder Peak
9	106.60	0	0.00	0.0	Ladder Peak
10	110.95	0	0.00	0.0	Ladder Peak
11	116.45	0	0.00	0.0	Ladder Peak
12	125.10	0	0.00	0.0	Ladder Peak
13	129.35	0	0.00	0.0	Ladder Peak
14	135.85	0	0.00	0.0	Ladder Peak

Assay Class: High Sensitivity DNA Assay
 Data Path: C:\...ents and Settings\Bioanalyzer\2013-11-21\2013-11-21_002.xad

Created: 11/21/2013 2:03:32 PM
 Modified: 11/21/2013 2:44:53 PM

Electropherogram Summary Continued ...



Overall Results for sample 1 : sample 1

Number of peaks found: 0 Noise: 0.2

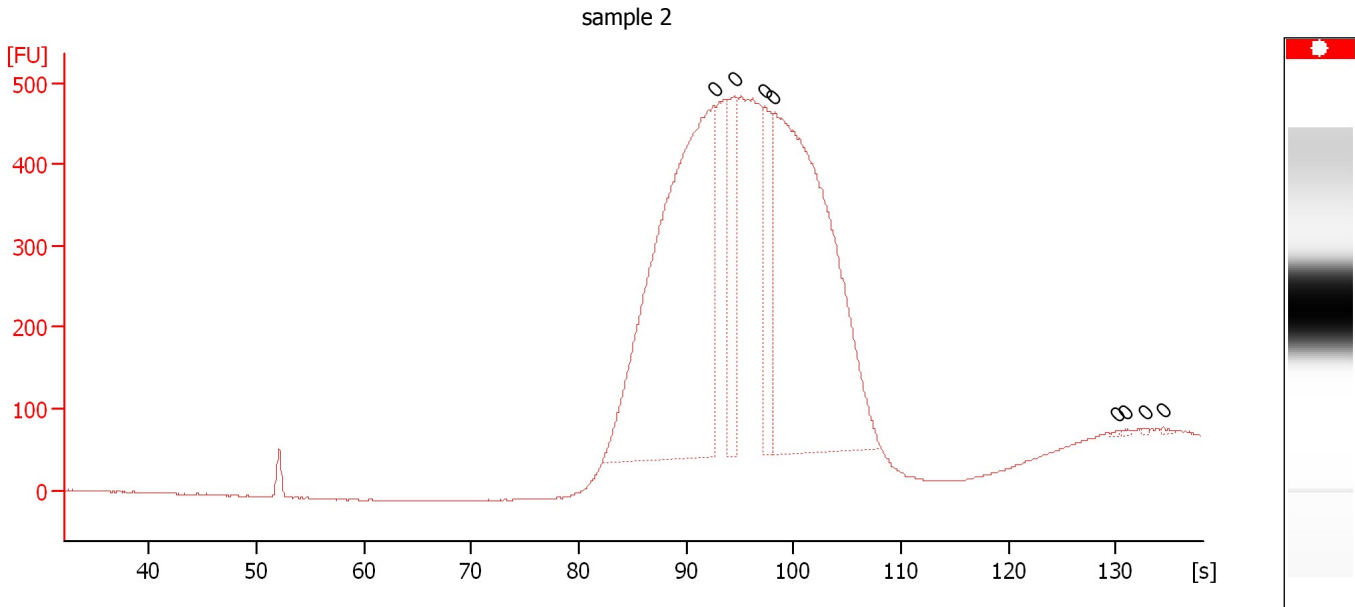
Peak table for sample 1 : sample 1

Peak	Aligned Migration Time [s]	Size [bp]	Conc. [pg/μl]	Molarity [pmol/l]	Observations
1	51.00	0	0.00	0.0	
2	87.75	0	0.00	0.0	
3	88.85	0	0.00	0.0	
4	89.60	0	0.00	0.0	
5	90.25	0	0.00	0.0	
6	92.20	0	0.00	0.0	
7	94.60	0	0.00	0.0	
8	121.15	0	0.00	0.0	
9	122.20	0	0.00	0.0	
10	123.50	0	0.00	0.0	
11	124.20	0	0.00	0.0	
12	124.80	0	0.00	0.0	
13	125.70	0	0.00	0.0	
14	127.75	0	0.00	0.0	
15	129.00	0	0.00	0.0	
16	130.40	0	0.00	0.0	
17	131.50	0	0.00	0.0	
18	132.30	0	0.00	0.0	
19	132.85	0	0.00	0.0	
20	133.90	0	0.00	0.0	

Assay Class: High Sensitivity DNA Assay
Data Path: C:\...ents and Settings\Bioanalyzer\2013-11-21\2013-11-21_002.xad

Created: 11/21/2013 2:03:32 PM
Modified: 11/21/2013 2:44:53 PM

Electropherogram Summary Continued ...



Overall Results for sample 2 : sample 2

Number of peaks found: 0 Noise: 0.9

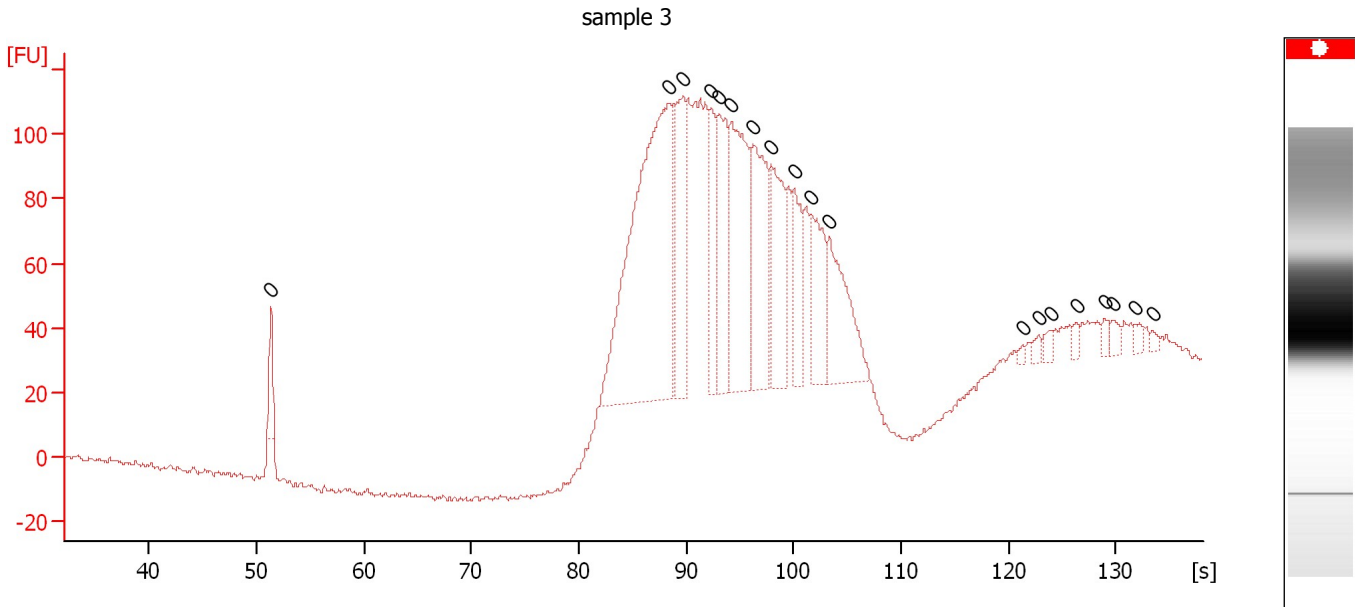
Peak table for sample 2 : sample 2

Peak	Aligned Migration Time [s]	Size [bp]	Conc. [pg/μl]	Molarity [pmol/l]	Observations
1	92.60	0	0.00	0.0	
2	94.45	0	0.00	0.0	
3	97.30	0	0.00	0.0	
4	98.15	0	0.00	0.0	
5	130.10	0	0.00	0.0	
6	130.85	0	0.00	0.0	
7	132.80	0	0.00	0.0	
8	134.40	0	0.00	0.0	

Assay Class: High Sensitivity DNA Assay
 Data Path: C:\...ents and Settings\Bioanalyzer\2013-11-21\2013-11-21_002.xad

Created: 11/21/2013 2:03:32 PM
 Modified: 11/21/2013 2:44:53 PM

Electropherogram Summary Continued ...



Overall Results for sample 3 : sample 3

Number of peaks found: 0 Noise: 0.8

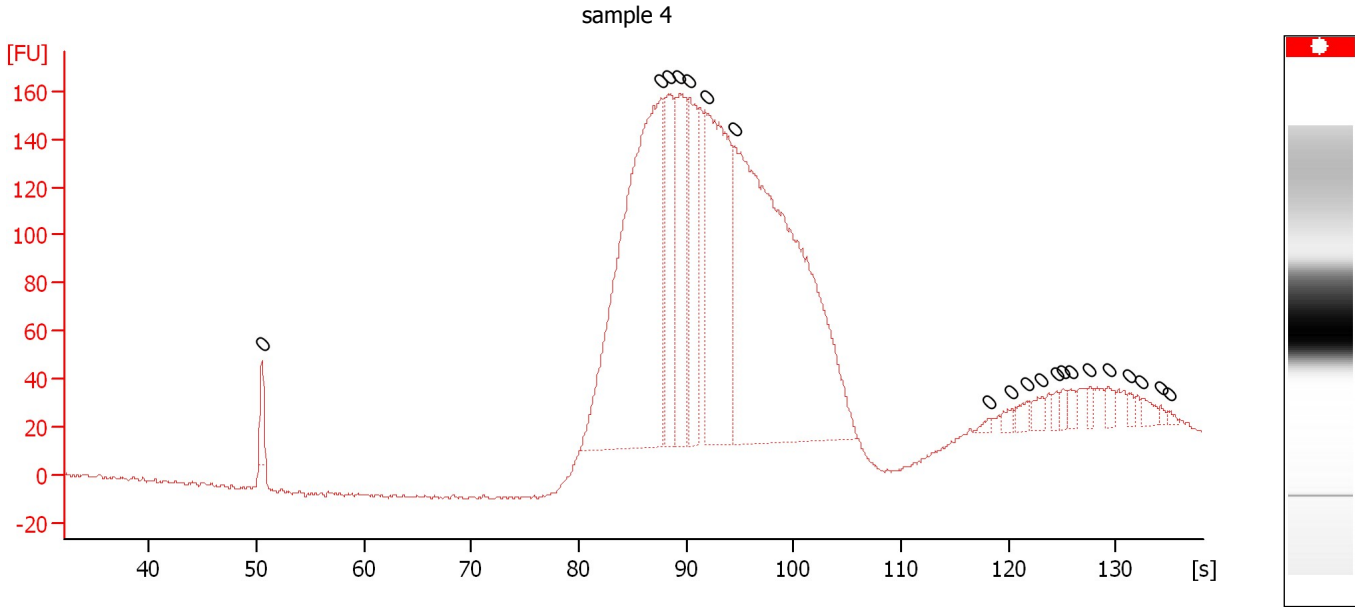
Peak table for sample 3 : sample 3

Peak	Aligned Migration Time [s]	Size [bp]	Conc. [pg/μl]	Molarity [pmol/l]	Observations
1	51.35	0	0.00	0.0	
2	88.40	0	0.00	0.0	
3	89.70	0	0.00	0.0	
4	92.35	0	0.00	0.0	
5	93.05	0	0.00	0.0	
6	94.20	0	0.00	0.0	
7	96.25	0	0.00	0.0	
8	97.90	0	0.00	0.0	
9	100.05	0	0.00	0.0	
10	101.65	0	0.00	0.0	
11	103.30	0	0.00	0.0	
12	121.35	0	0.00	0.0	
13	122.85	0	0.00	0.0	
14	123.90	0	0.00	0.0	
15	126.35	0	0.00	0.0	
16	129.00	0	0.00	0.0	
17	129.75	0	0.00	0.0	
18	131.80	0	0.00	0.0	
19	133.45	0	0.00	0.0	

Assay Class: High Sensitivity DNA Assay
 Data Path: C:\...ents and Settings\Bioanalyzer\2013-11-21\2013-11-21_002.xad

Created: 11/21/2013 2:03:32 PM
 Modified: 11/21/2013 2:44:53 PM

Electropherogram Summary Continued ...



Overall Results for sample 4 : sample 4

Number of peaks found: 0 Noise: 0.8

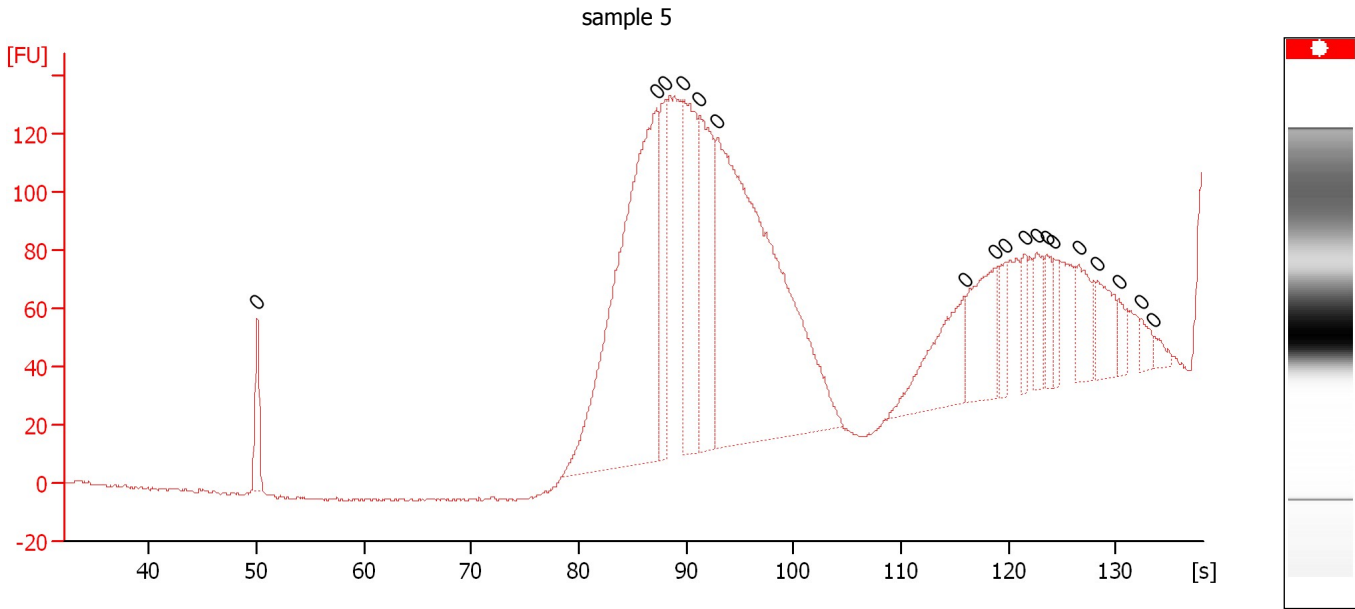
Peak table for sample 4 : sample 4

Peak	Aligned Migration Time [s]	Size [bp]	Conc. [pg/μl]	Molarity [pmol/l]	Observations
1	50.50	0	0.00	0.0	
2	87.70	0	0.00	0.0	
3	88.35	0	0.00	0.0	
4	89.40	0	0.00	0.0	
5	90.30	0	0.00	0.0	
6	91.85	0	0.00	0.0	
7	94.50	0	0.00	0.0	
8	118.15	0	0.00	0.0	
9	120.30	0	0.00	0.0	
10	121.65	0	0.00	0.0	
11	123.10	0	0.00	0.0	
12	124.45	0	0.00	0.0	
13	125.10	0	0.00	0.0	
14	125.75	0	0.00	0.0	
15	127.55	0	0.00	0.0	
16	129.30	0	0.00	0.0	
17	131.20	0	0.00	0.0	
18	132.45	0	0.00	0.0	
19	134.15	0	0.00	0.0	
20	134.95	0	0.00	0.0	

Assay Class: High Sensitivity DNA Assay
 Data Path: C:\...ents and Settings\Bioanalyzer\2013-11-21\2013-11-21_002.xad

Created: 11/21/2013 2:03:32 PM
 Modified: 11/21/2013 2:44:53 PM

Electropherogram Summary Continued ...



Overall Results for sample 5 : sample 5

Number of peaks found: 0 Noise: 0.5

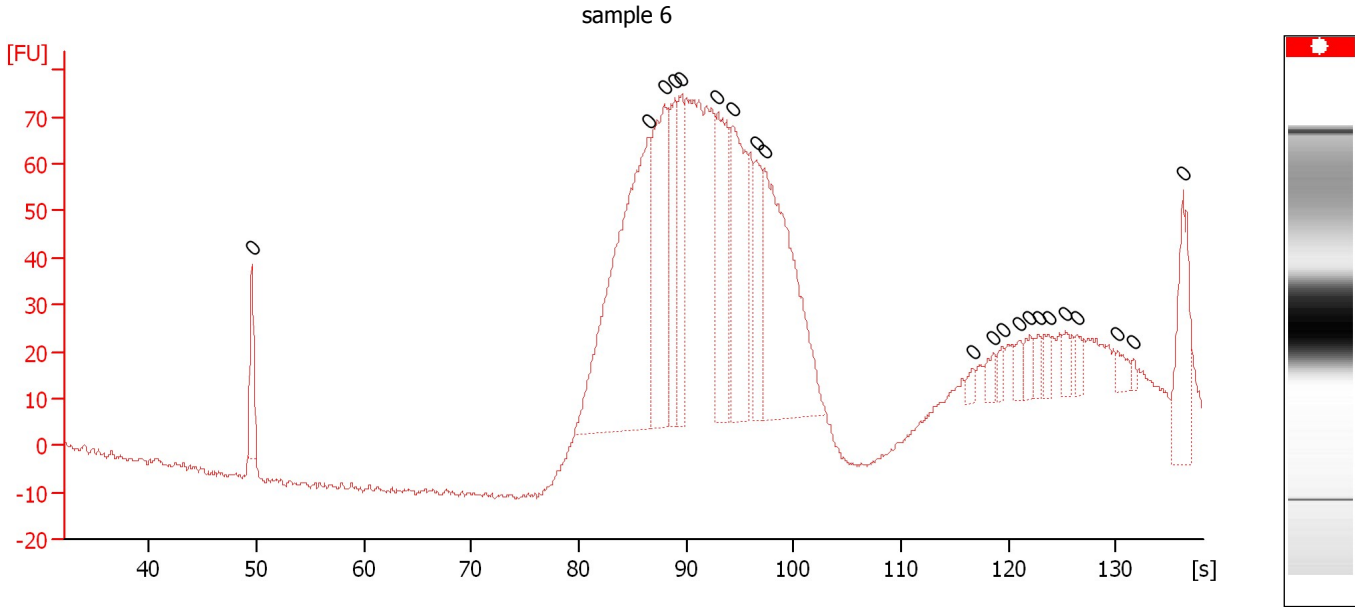
Peak table for sample 5 : sample 5

Peak	Aligned Migration Time [s]	Size [bp]	Conc. [pg/μl]	Molarity [pmol/l]	Observations
1	50.05	0	0.00	0.0	
2	87.25	0	0.00	0.0	
3	88.05	0	0.00	0.0	
4	89.65	0	0.00	0.0	
5	91.25	0	0.00	0.0	
6	92.90	0	0.00	0.0	
7	115.90	0	0.00	0.0	
8	118.75	0	0.00	0.0	
9	119.70	0	0.00	0.0	
10	121.50	0	0.00	0.0	
11	122.60	0	0.00	0.0	
12	123.55	0	0.00	0.0	
13	124.25	0	0.00	0.0	
14	126.55	0	0.00	0.0	
15	128.30	0	0.00	0.0	
16	130.25	0	0.00	0.0	
17	132.30	0	0.00	0.0	
18	133.55	0	0.00	0.0	

Assay Class: High Sensitivity DNA Assay
 Data Path: C:\...ents and Settings\Bioanalyzer\2013-11-21\2013-11-21_002.xad

Created: 11/21/2013 2:03:32 PM
 Modified: 11/21/2013 2:44:53 PM

Electropherogram Summary Continued ...



Overall Results for sample 6 : sample 6

Number of peaks found: 0 Noise: 0.7

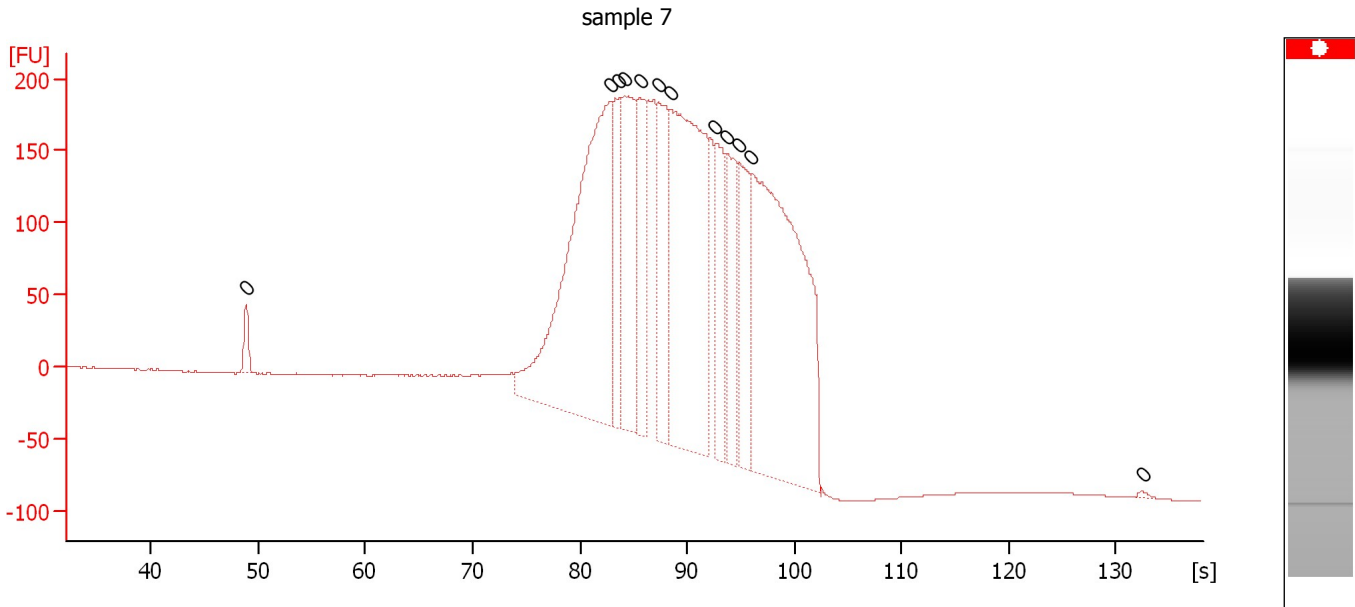
Peak table for sample 6 : sample 6

Peak	Aligned Migration Time [s]	Size [bp]	Conc. [pg/μl]	Molarity [pmol/l]	Observations
1	49.55	0	0.00	0.0	
2	86.45	0	0.00	0.0	
3	87.95	0	0.00	0.0	
4	88.95	0	0.00	0.0	
5	89.55	0	0.00	0.0	
6	92.90	0	0.00	0.0	
7	94.40	0	0.00	0.0	
8	96.50	0	0.00	0.0	
9	97.30	0	0.00	0.0	
10	116.70	0	0.00	0.0	
11	118.55	0	0.00	0.0	
12	119.45	0	0.00	0.0	
13	121.00	0	0.00	0.0	
14	122.00	0	0.00	0.0	
15	122.80	0	0.00	0.0	
16	123.70	0	0.00	0.0	
17	125.30	0	0.00	0.0	
18	126.35	0	0.00	0.0	
19	130.15	0	0.00	0.0	
20	131.65	0	0.00	0.0	
21	136.25	0	0.00	0.0	

Assay Class: High Sensitivity DNA Assay
 Data Path: C:\...ents and Settings\Bioanalyzer\2013-11-21\2013-11-21_002.xad

Created: 11/21/2013 2:03:32 PM
 Modified: 11/21/2013 2:44:53 PM

Electropherogram Summary Continued ...



Overall Results for sample 7 : sample 7

Number of peaks found: 0 Noise: 0.1

Peak table for sample 7 : sample 7

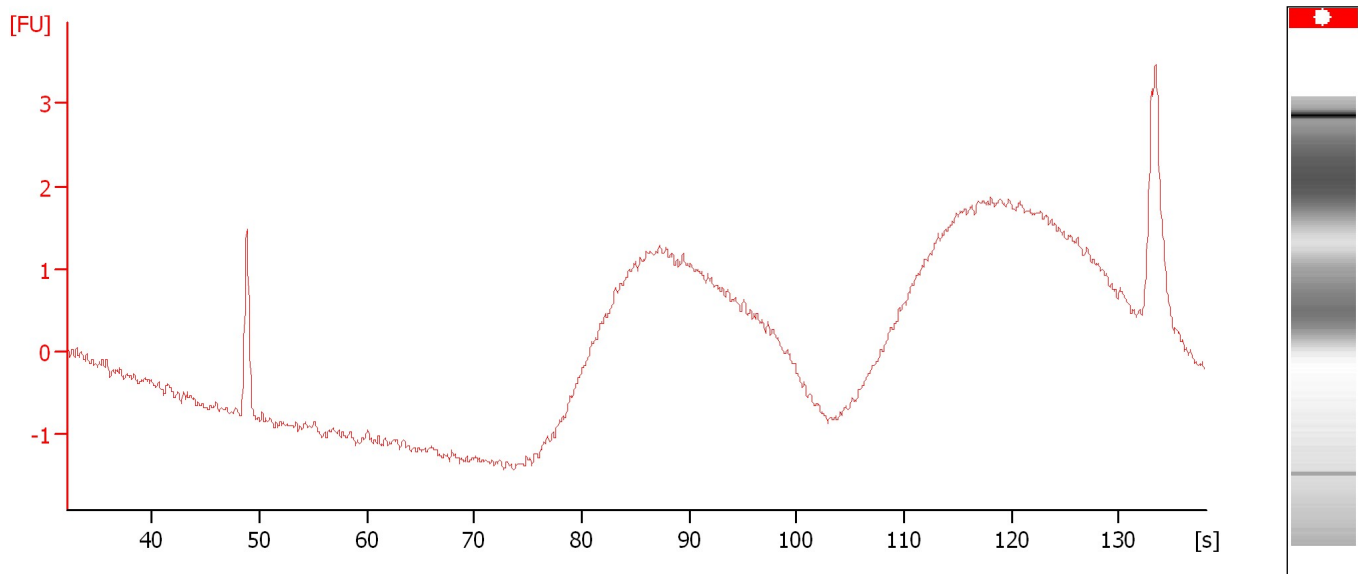
Peak	Aligned Migration Time [s]	Size [bp]	Conc. [pg/μl]	Molarity [pmol/l]	Observations
1	48.90	0	0.00	0.0	
2	82.80	0	0.00	0.0	
3	83.65	0	0.00	0.0	
4	84.20	0	0.00	0.0	
5	85.60	0	0.00	0.0	
6	87.30	0	0.00	0.0	
7	88.40	0	0.00	0.0	
8	92.65	0	0.00	0.0	
9	93.70	0	0.00	0.0	
10	94.80	0	0.00	0.0	
11	96.00	0	0.00	0.0	
12	132.45	0	0.00	0.0	

Assay Class: High Sensitivity DNA Assay
Data Path: C:\...ents and Settings\Bioanalyzer\2013-11-21\2013-11-21_002.xad

Created: 11/21/2013 2:03:32 PM
Modified: 11/21/2013 2:44:53 PM

Electropherogram Summary Continued ...

sample 8



Overall Results for sample 8 : sample 8

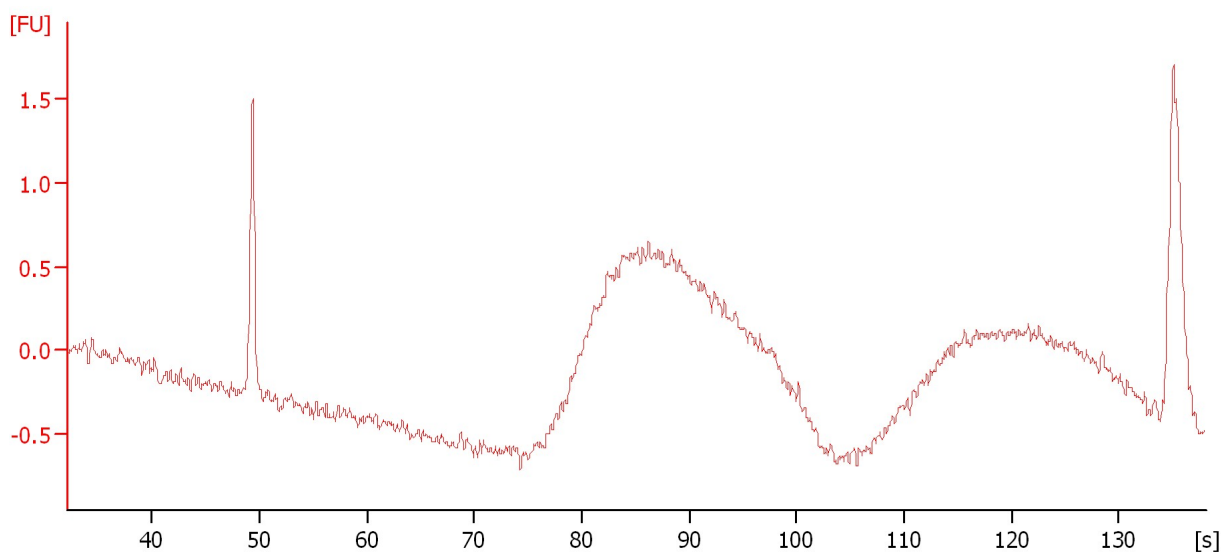
Noise: 0.1

Assay Class: High Sensitivity DNA Assay
Data Path: C:\...ents and Settings\Bioanalyzer\2013-11-21\2013-11-21_002.xad

Created: 11/21/2013 2:03:32 PM
Modified: 11/21/2013 2:44:53 PM

Electropherogram Summary Continued ...

sample 9



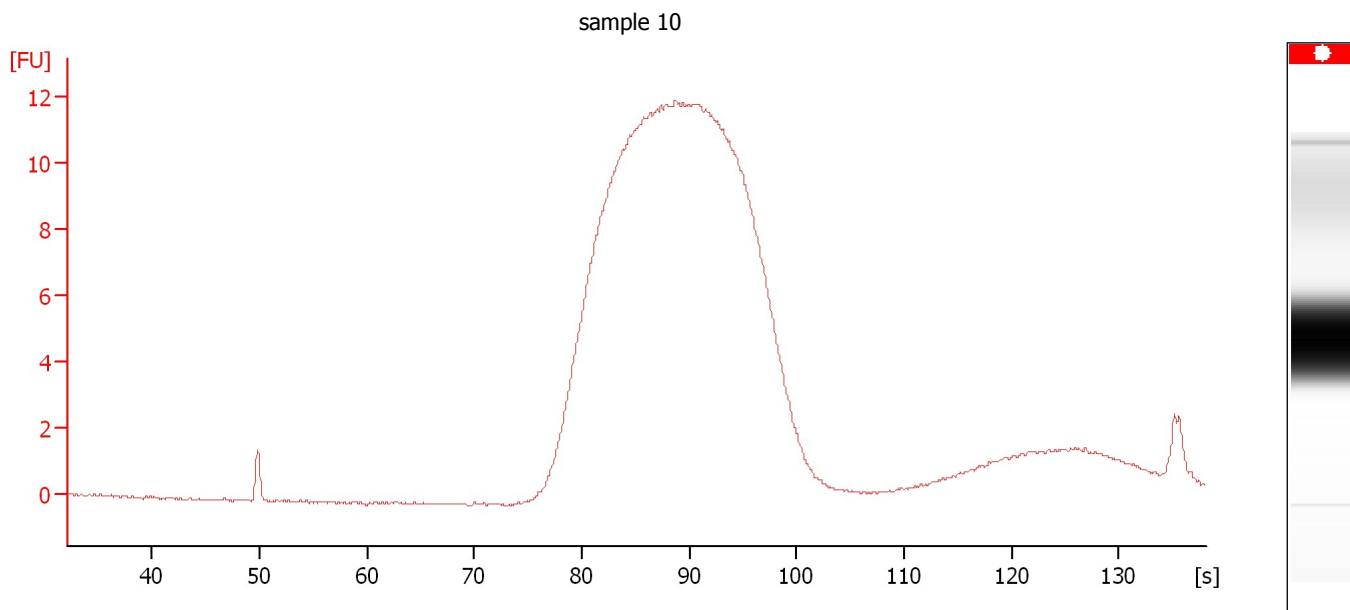
Overall Results for sample 9 : sample 9

Noise: 0.1

Assay Class: High Sensitivity DNA Assay
Data Path: C:\...ents and Settings\Bioanalyzer\2013-11-21\2013-11-21_002.xad

Created: 11/21/2013 2:03:32 PM
Modified: 11/21/2013 2:44:53 PM

Electropherogram Summary Continued ...



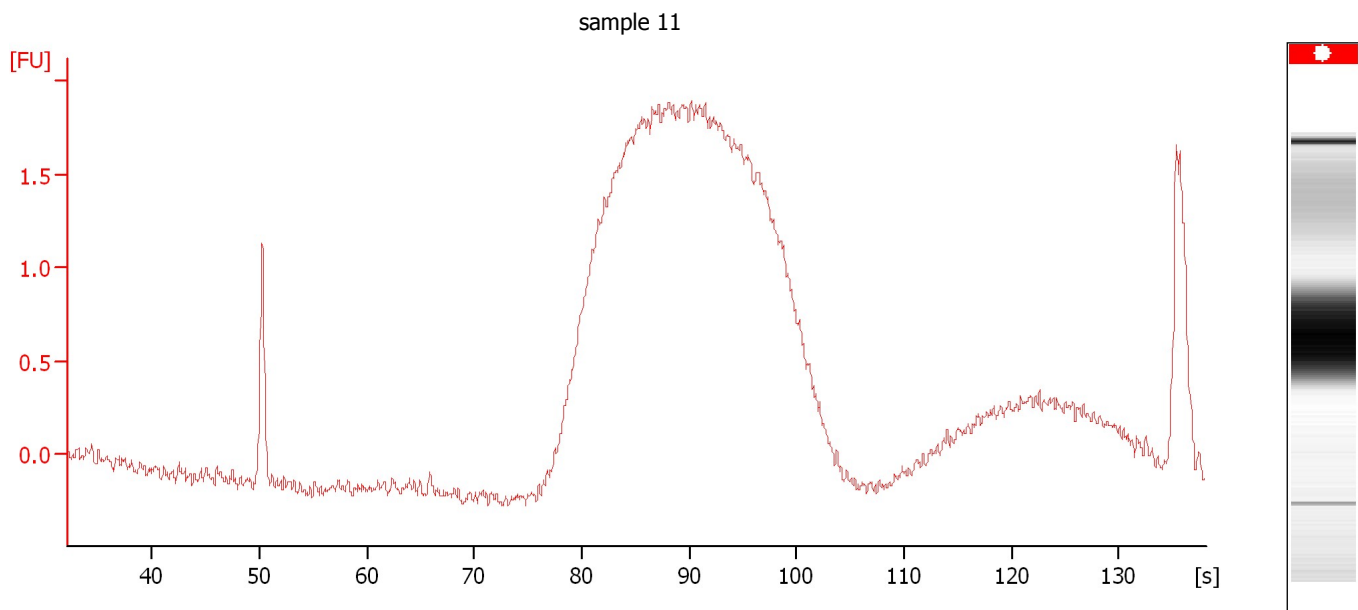
Overall Results for sample 10 : sample 10

Noise: 0.0

Assay Class: High Sensitivity DNA Assay
Data Path: C:\...ents and Settings\Bioanalyzer\2013-11-21\2013-11-21_002.xad

Created: 11/21/2013 2:03:32 PM
Modified: 11/21/2013 2:44:53 PM

Electropherogram Summary Continued ...



Overall Results for sample 11 : sample 11

Noise: 0.0

Assay Class: High Sensitivity DNA Assay
Data Path: C:\...ents and Settings\Bioanalyzer\2013-11-21\2013-11-21_002.xad

Created: 11/21/2013 2:03:32 PM
Modified: 11/21/2013 2:44:53 PM

Gel Image

