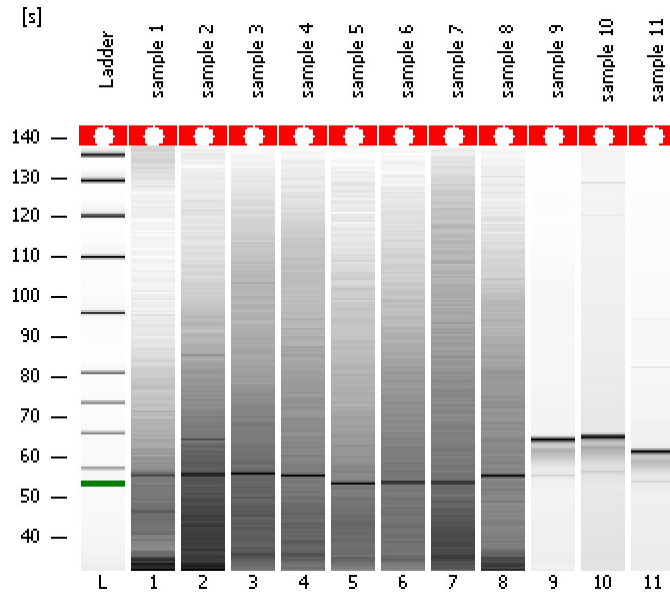


Assay Class: High Sensitivity DNA Assay
Data Path: C:\...ents and Settings\Bioanalyzer\2013-11-26\2013-11-26_003.xad

Created: 11/26/2013 12:22:36 PM
Modified: 11/26/2013 1:03:55 PM

Electrophoresis File Run Summary



Instrument Information:

Instrument Name: DE13701086 Firmware: C.01.069
Serial#: DE13701086 Type: G2938B

Assay Information:

Assay Origin Path: C:\Program Files\Agilent\2100 bioanalyzer\2100 expert\assays\dsDNA\High Sensitivity DNA.xsy
Assay Class: High Sensitivity DNA Assay
Version: 1.03
Assay Comments: Copyright © 2003-2010 Agilent Technologies

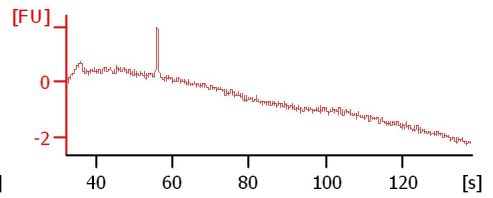
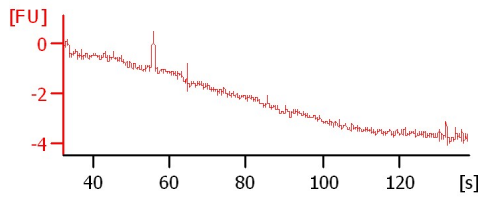
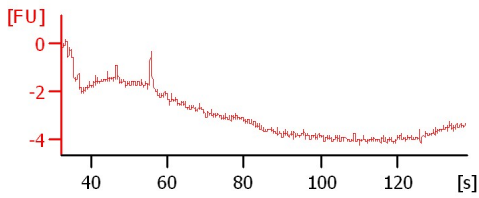
Chip Information:

Chip Lot #: Reagent Kit Lot #: Chip Comments:

sample 1

sample 2

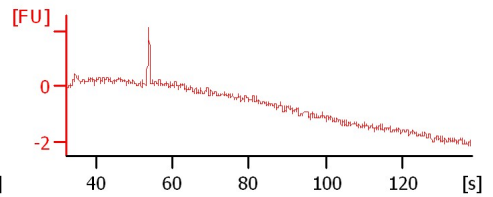
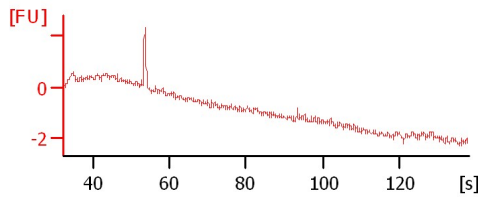
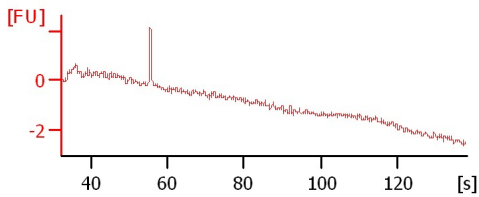
sample 3



sample 4

sample 5

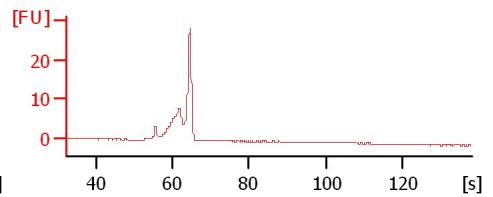
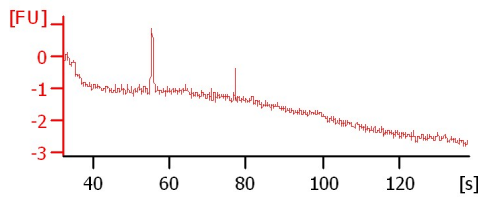
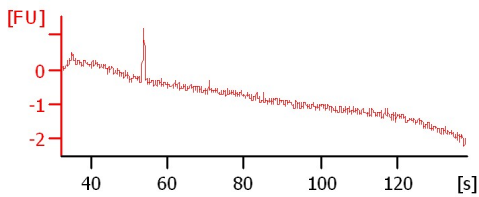
sample 6



sample 7

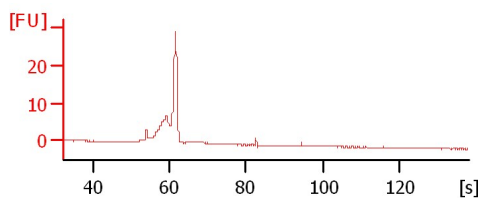
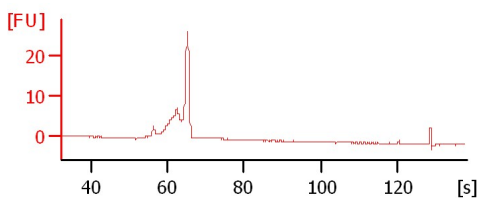
sample 8

sample 9



sample 10

sample 11



Assay Class: High Sensitivity DNA Assay
 Data Path: C:\...ents and Settings\Bioanalyzer\2013-11-26\2013-11-26_003.xad

Created: 11/26/2013 12:22:36 PM
 Modified: 11/26/2013 1:03:55 PM

Electrophoresis File Run Summary (Chip Summary)

Sample Name	Sample Comment	Rest. Digest	Status	Observation	Result Label	Result Color
sample 1		<input type="checkbox"/>	✓			
sample 2		<input type="checkbox"/>	✓			
sample 3		<input type="checkbox"/>	✓			
sample 4		<input type="checkbox"/>	✓			
sample 5		<input type="checkbox"/>	✓			
sample 6		<input type="checkbox"/>	✓			
sample 7		<input type="checkbox"/>	✓			
sample 8		<input type="checkbox"/>	✓			
sample 9		<input type="checkbox"/>	✓			
sample 10		<input type="checkbox"/>	✓			
sample 11		<input type="checkbox"/>	✓			
Ladder		<input type="checkbox"/>	✓			

Chip Lot #

Reagent Kit Lot #

Chip Comments :

Assay Class: High Sensitivity DNA Assay
 Data Path: C:\...ents and Settings\Bioanalyzer\2013-11-26\2013-11-26_003.xad

Created: 11/26/2013 12:22:36 PM
 Modified: 11/26/2013 1:03:55 PM

Electrophoresis Assay Details

General Analysis Settings

Number of Available Sample and Ladder Wells (Max.) : 12
 Minimum Visible Range [s] : 32
 Maximum Visible Range [s] : 138
 Start Analysis Time Range [s] : 33
 End Analysis Time Range [s] : 137.5
 Ladder Concentration [pg/μl] : 1950
 Uses Standard Area for Ladder Fragments
 Lower Marker Concentration [pg/μl] : 125
 Upper Marker Concentration [pg/μl] : 75
 Used Upper Marker for Quantitation
 Standard Curve Fit is Point to Point
 Show Data Aligned to Lower and Upper Marker

Integrator Settings

Integration Start Time [s] : 33.05
 Integration End Time [s] : 137
 Slope Threshold : 0.8
 Height Threshold [FU] : 5
 Area Threshold : 0.1
 Width Threshold [s] : 0.6
 Baseline Plateau [s] : 0.5

Filter Settings

Filter Width [s] : 0.5
 Polynomial Order : 4

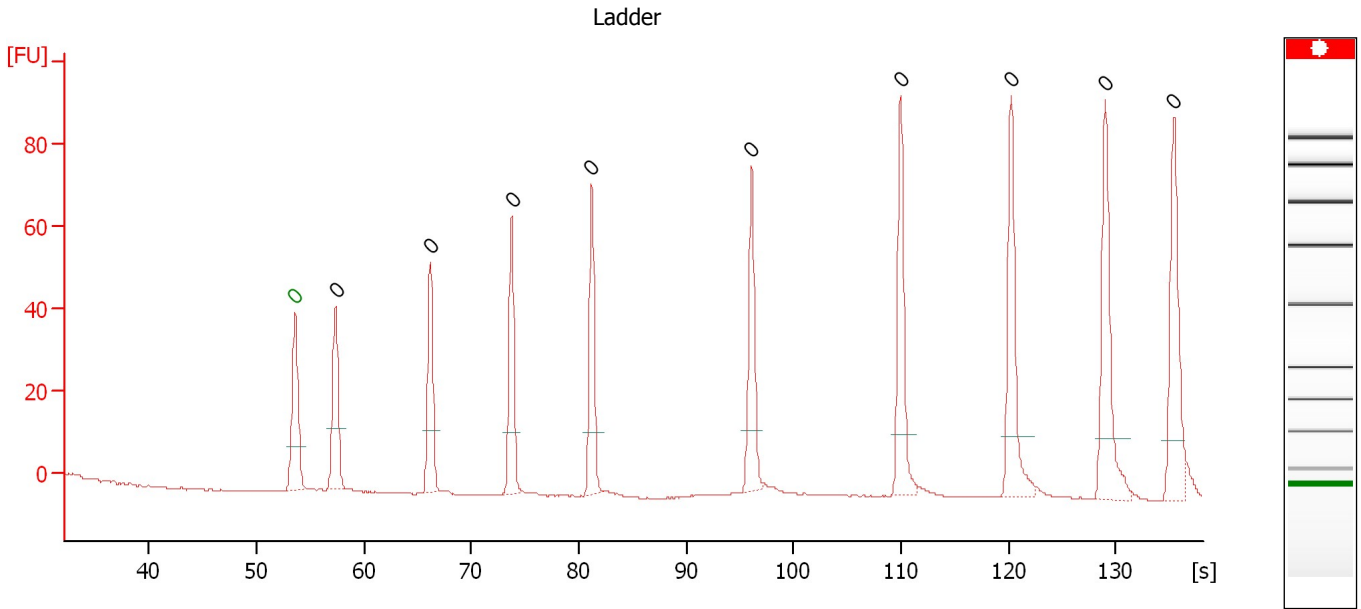
Ladder

Ladder Peak	Size	Area
1	35	160
2	50	210
3	100	208
4	150	221
5	200	242
6	300	270
7	400	305
8	500	306
9	600	336
10	700	321
11	1000	366
12	2000	413
13	3000	411
14	7000	400
15	10380	214

Assay Class: High Sensitivity DNA Assay
 Data Path: C:\...ents and Settings\Bioanalyzer\2013-11-26\2013-11-26_003.xad

Created: 11/26/2013 12:22:36 PM
 Modified: 11/26/2013 1:03:55 PM

Electropherogram Summary



Overall Results for Ladder

Noise: 0.2

Peak table for Ladder

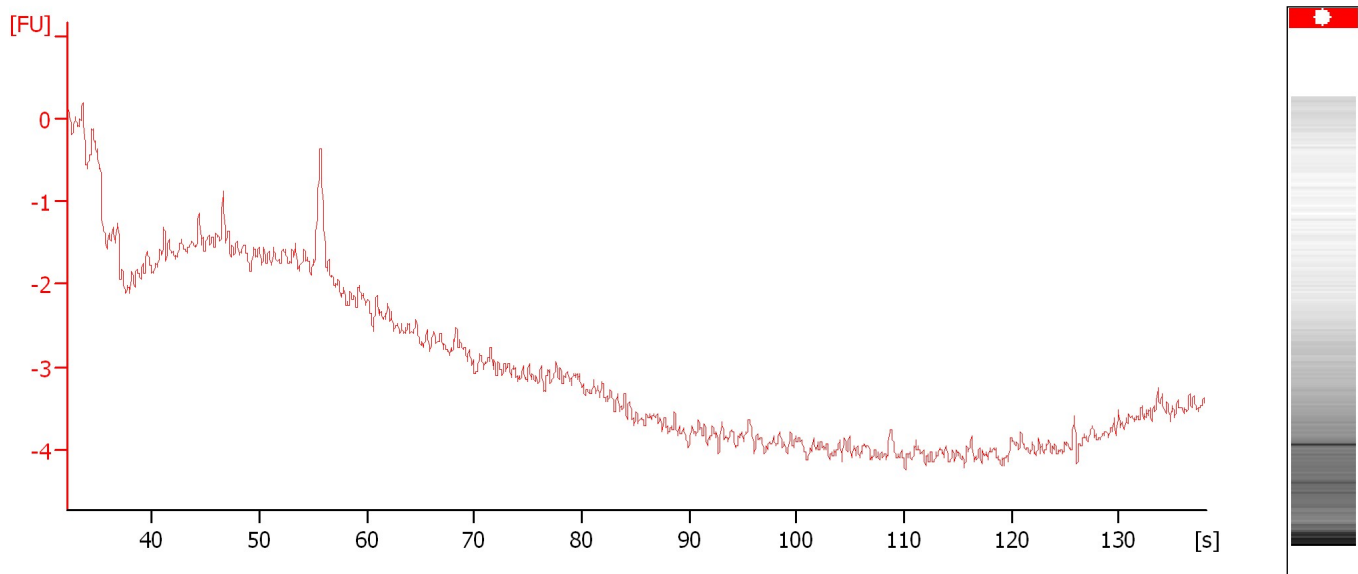
Peak	Aligned Migration Time [s]	Size [bp]	Conc. [pg/μl]	Molarity [pmol/l]	Observations
1	53.60	0	0.00	0.0	Lower Marker
2	57.35	0	0.00	0.0	Ladder Peak
3	66.20	0	0.00	0.0	Ladder Peak
4	73.75	0	0.00	0.0	Ladder Peak
5	81.20	0	0.00	0.0	Ladder Peak
6	96.10	0	0.00	0.0	Ladder Peak
7	109.95	0	0.00	0.0	Ladder Peak
8	120.25	0	0.00	0.0	Ladder Peak
9	129.05	0	0.00	0.0	Ladder Peak
10	135.40	0	0.00	0.0	Ladder Peak

Assay Class: High Sensitivity DNA Assay
Data Path: C:\...ents and Settings\Bioanalyzer\2013-11-26\2013-11-26_003.xad

Created: 11/26/2013 12:22:36 PM
Modified: 11/26/2013 1:03:55 PM

Electropherogram Summary Continued ...

sample 1



Overall Results for sample 1 : sample 1

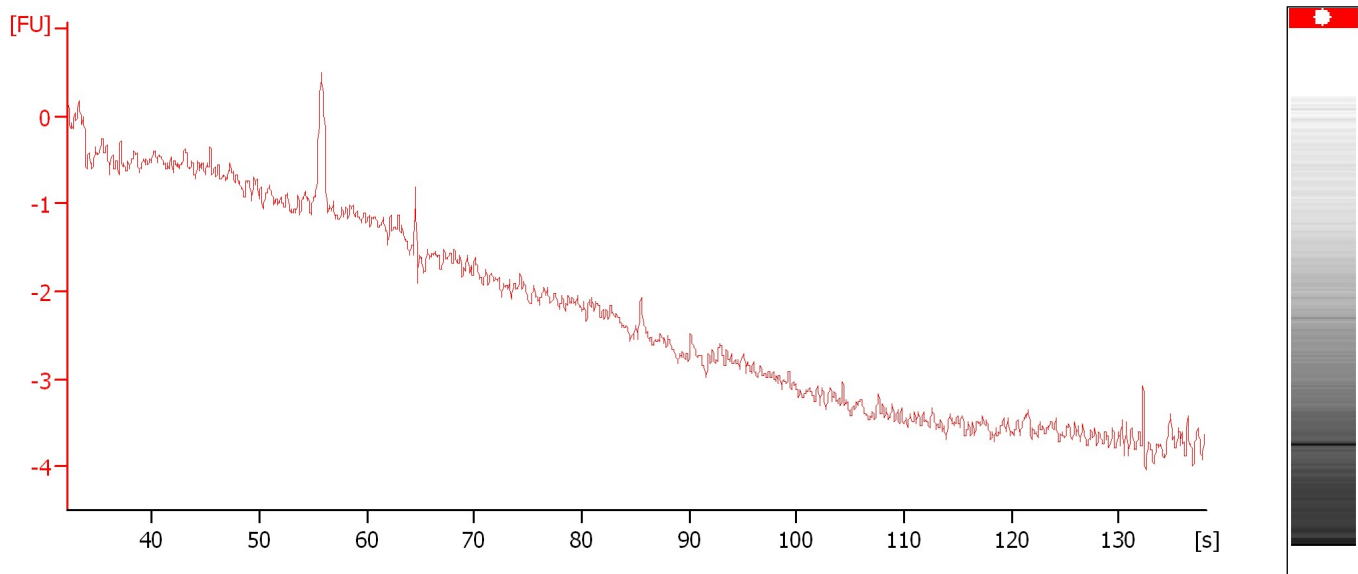
Noise: 0.1

Assay Class: High Sensitivity DNA Assay
Data Path: C:\...ents and Settings\Bioanalyzer\2013-11-26\2013-11-26_003.xad

Created: 11/26/2013 12:22:36 PM
Modified: 11/26/2013 1:03:55 PM

Electropherogram Summary Continued ...

sample 2



Overall Results for sample 2 : sample 2

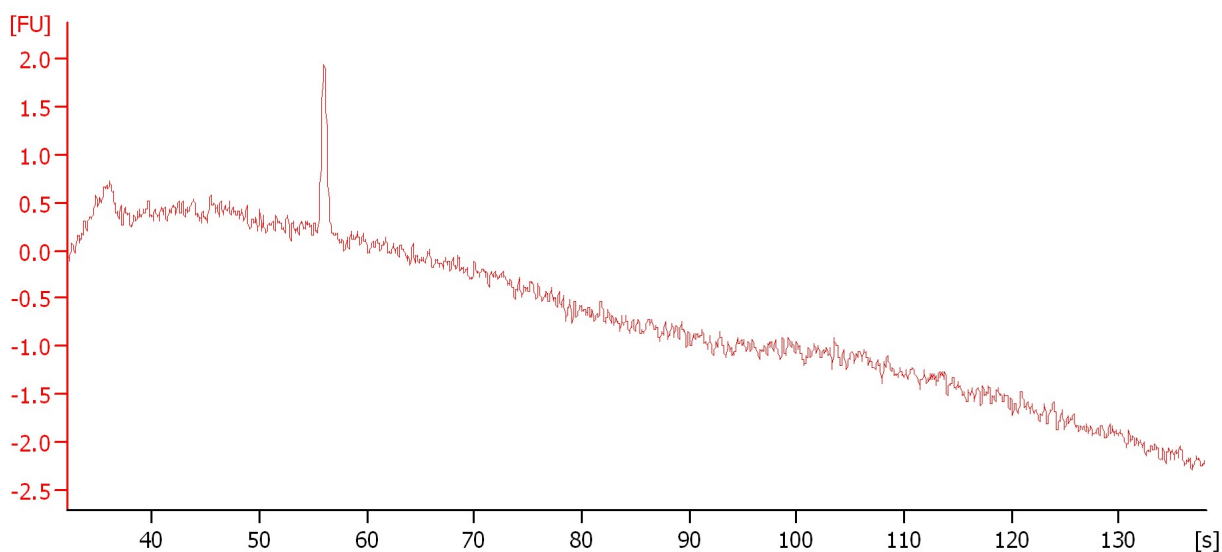
Noise: 0.1

Assay Class: High Sensitivity DNA Assay
Data Path: C:\...ents and Settings\Bioanalyzer\2013-11-26\2013-11-26_003.xad

Created: 11/26/2013 12:22:36 PM
Modified: 11/26/2013 1:03:55 PM

Electropherogram Summary Continued ...

sample 3



Overall Results for sample 3 : sample 3

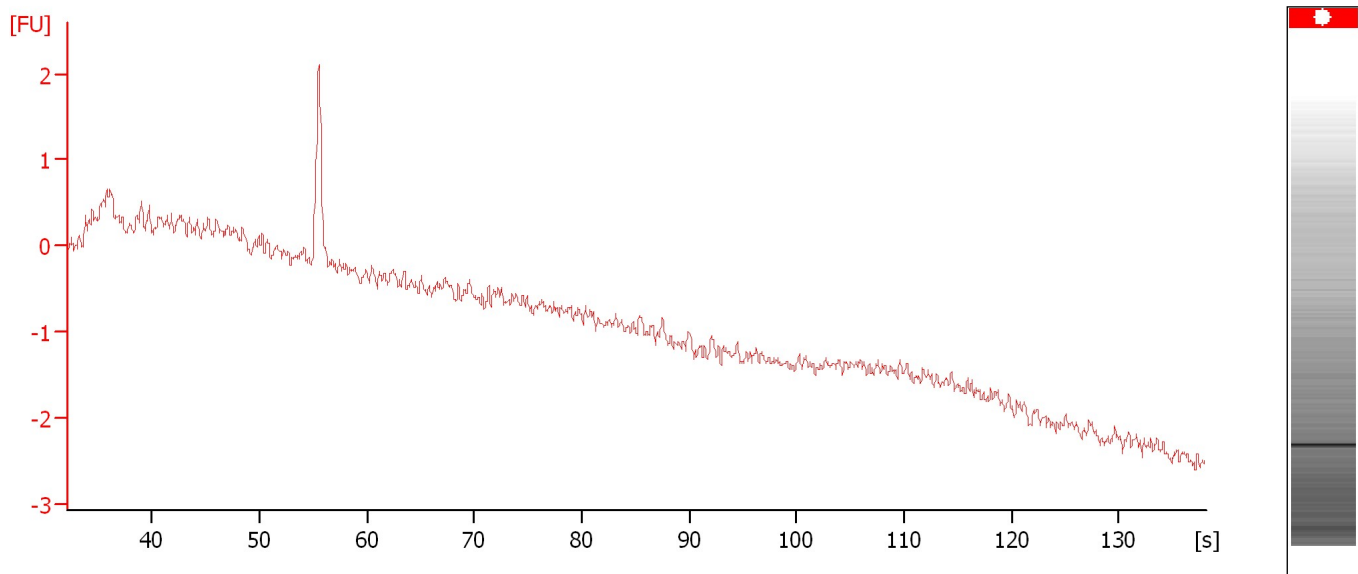
Noise: 0.1

Assay Class: High Sensitivity DNA Assay
Data Path: C:\...ents and Settings\Bioanalyzer\2013-11-26\2013-11-26_003.xad

Created: 11/26/2013 12:22:36 PM
Modified: 11/26/2013 1:03:55 PM

Electropherogram Summary Continued ...

sample 4



Overall Results for sample 4 : sample 4

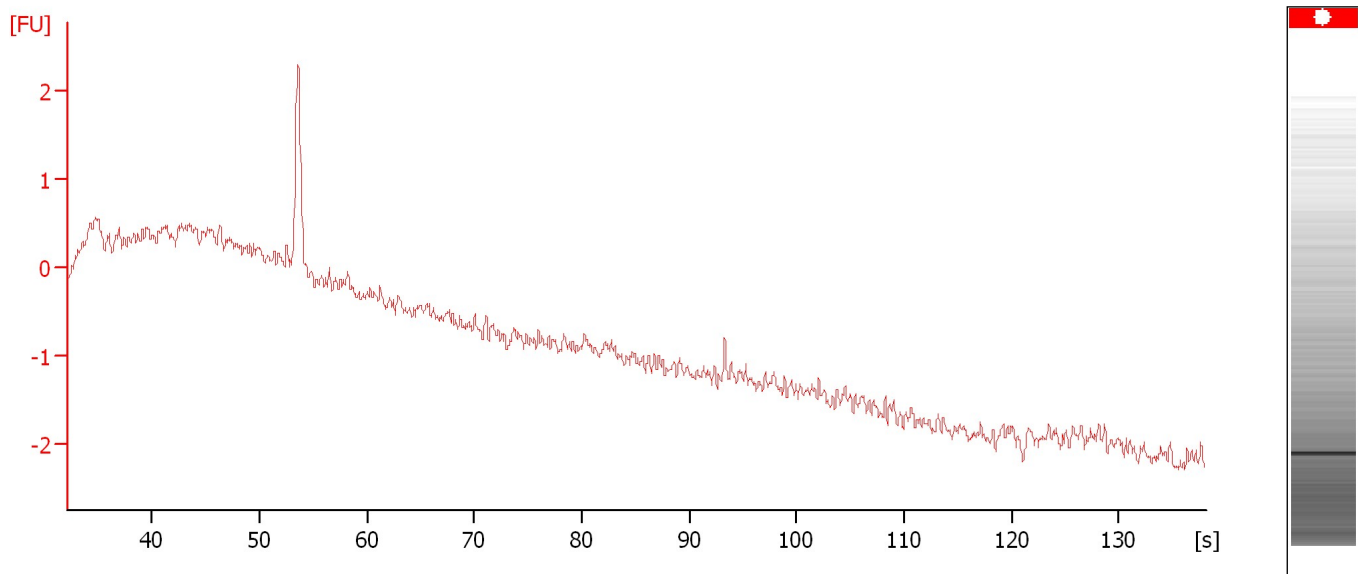
Noise: 0.1

Assay Class: High Sensitivity DNA Assay
Data Path: C:\...ents and Settings\Bioanalyzer\2013-11-26\2013-11-26_003.xad

Created: 11/26/2013 12:22:36 PM
Modified: 11/26/2013 1:03:55 PM

Electropherogram Summary Continued ...

sample 5



Overall Results for sample 5 : sample 5

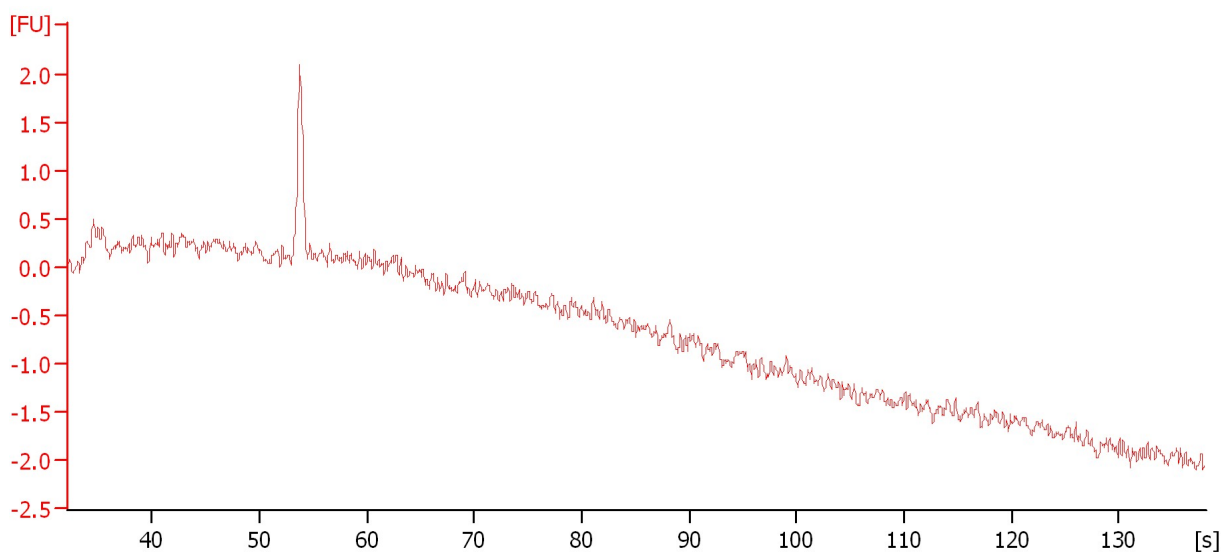
Noise: 0.1

Assay Class: High Sensitivity DNA Assay
Data Path: C:\...ents and Settings\Bioanalyzer\2013-11-26\2013-11-26_003.xad

Created: 11/26/2013 12:22:36 PM
Modified: 11/26/2013 1:03:55 PM

Electropherogram Summary Continued ...

sample 6



Overall Results for sample 6 : sample 6

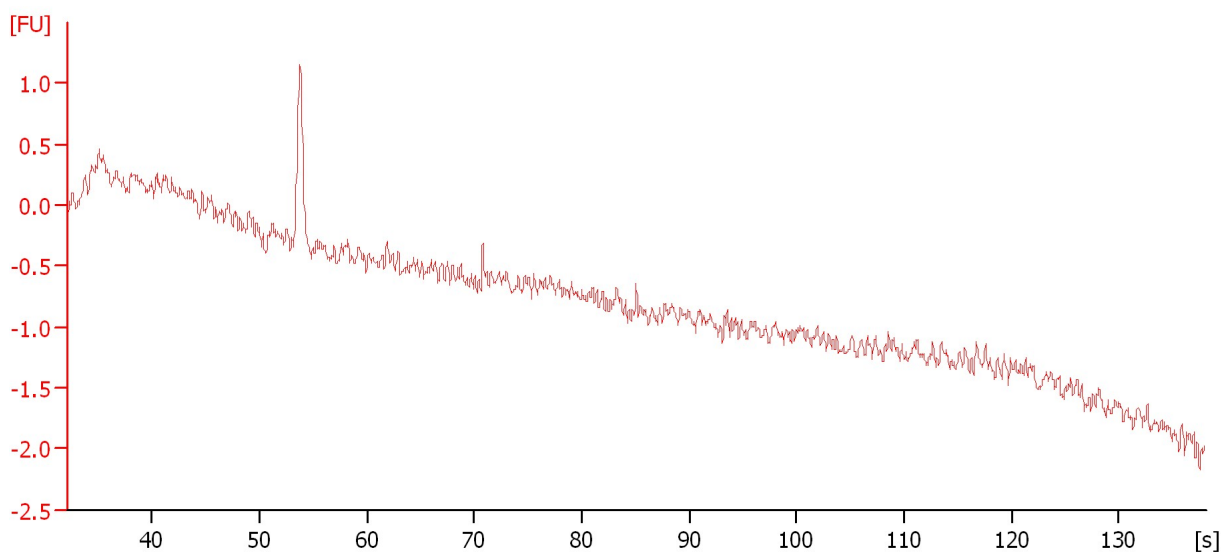
Noise: 0.1

Assay Class: High Sensitivity DNA Assay
Data Path: C:\...ents and Settings\Bioanalyzer\2013-11-26\2013-11-26_003.xad

Created: 11/26/2013 12:22:36 PM
Modified: 11/26/2013 1:03:55 PM

Electropherogram Summary Continued ...

sample 7



Overall Results for sample 7 : sample 7

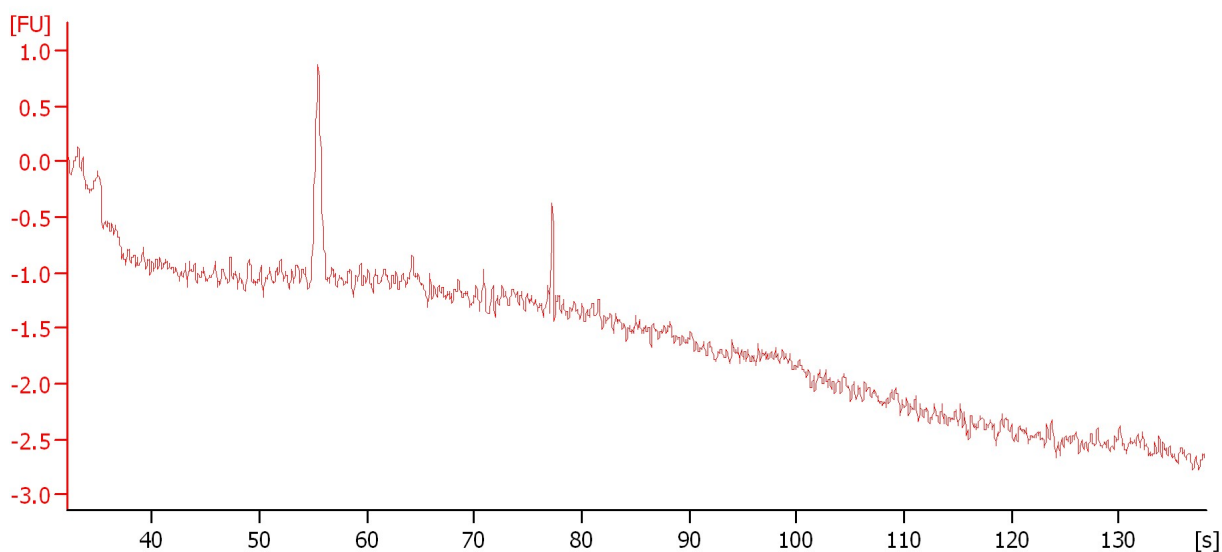
Noise: 0.1

Assay Class: High Sensitivity DNA Assay
Data Path: C:\...ents and Settings\Bioanalyzer\2013-11-26\2013-11-26_003.xad

Created: 11/26/2013 12:22:36 PM
Modified: 11/26/2013 1:03:55 PM

Electropherogram Summary Continued ...

sample 8



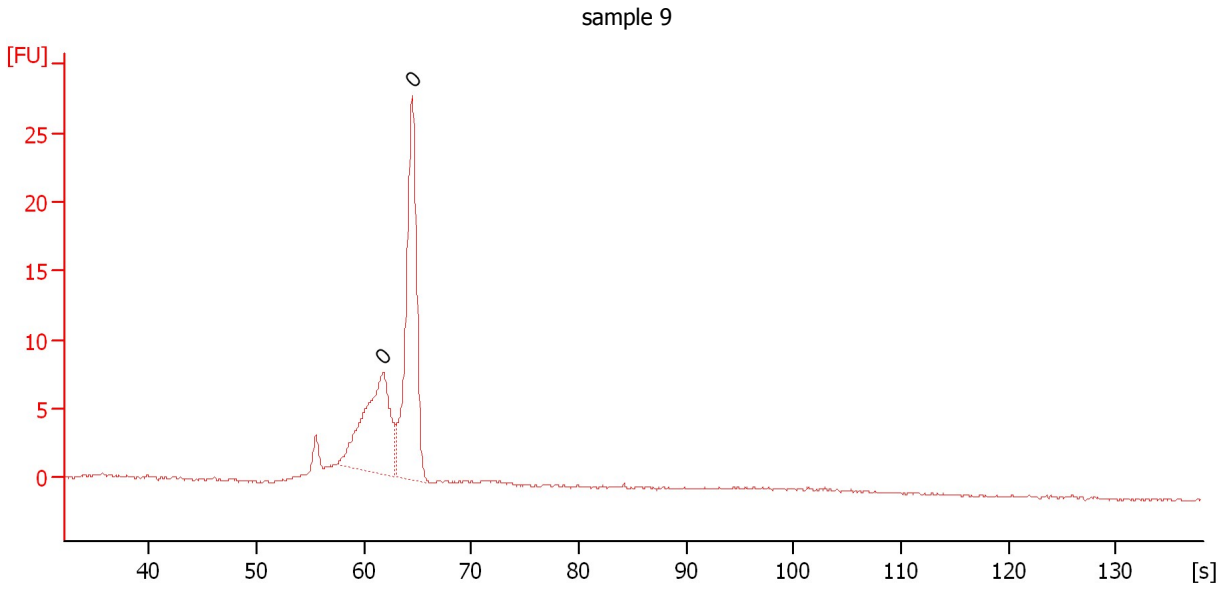
Overall Results for sample 8 : sample 8

Noise: 0.1

Assay Class: High Sensitivity DNA Assay
Data Path: C:\...ents and Settings\Bioanalyzer\2013-11-26\2013-11-26_003.xad

Created: 11/26/2013 12:22:36 PM
Modified: 11/26/2013 1:03:55 PM

Electropherogram Summary Continued ...



Overall Results for sample 9 : sample 9

Number of peaks found: 0 Noise: 0.1

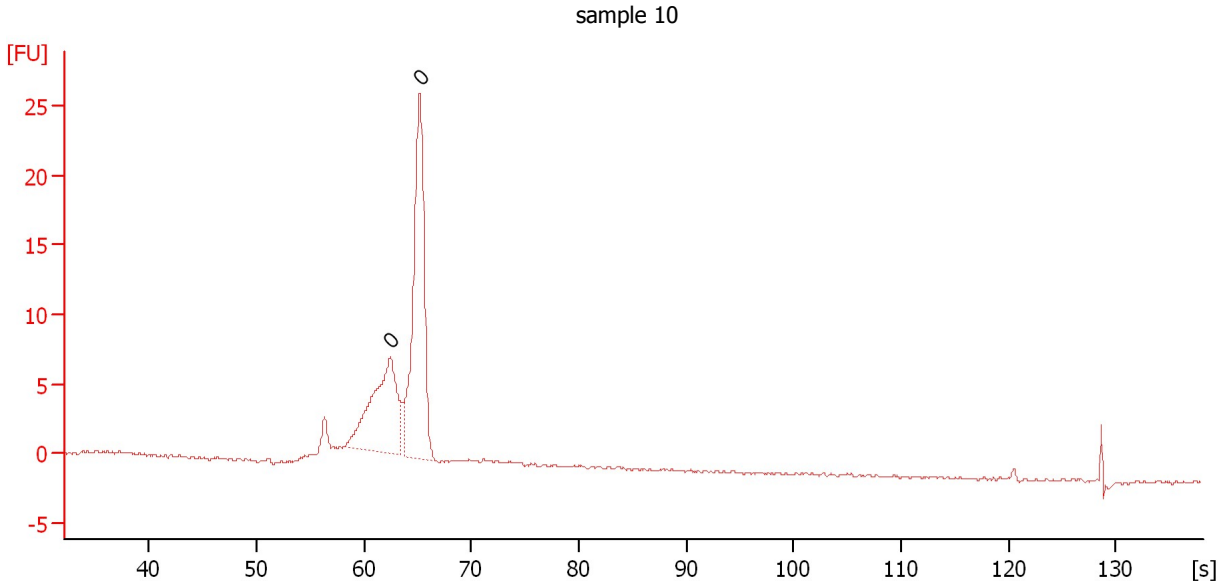
Peak table for sample 9 : sample 9

Peak	Aligned Migration Time [s]	Size [bp]	Conc. [pg/ μ l]	Molarity [pmol/l]	Observations
1	61.75	0	0.00	0.0	
2	64.50	0	0.00	0.0	

Assay Class: High Sensitivity DNA Assay
Data Path: C:\...ents and Settings\Bioanalyzer\2013-11-26\2013-11-26_003.xad

Created: 11/26/2013 12:22:36 PM
Modified: 11/26/2013 1:03:55 PM

Electropherogram Summary Continued ...



Overall Results for sample 10 : sample 10

Number of peaks found: 0 Noise: 0.1

Peak table for sample 10 : sample 10

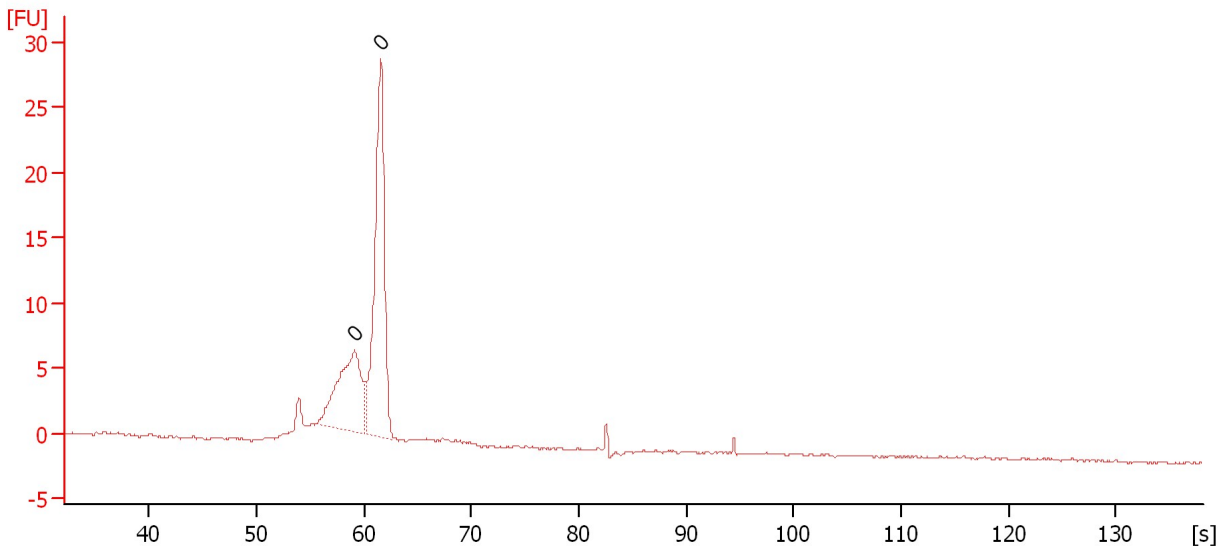
Peak	Aligned Migration Time [s]	Size [bp]	Conc. [pg/μl]	Molarity [pmol/l]	Observations
1	62.45	0	0.00	0.0	
2	65.20	0	0.00	0.0	

Assay Class: High Sensitivity DNA Assay
Data Path: C:\...ents and Settings\Bioanalyzer\2013-11-26\2013-11-26_003.xad

Created: 11/26/2013 12:22:36 PM
Modified: 11/26/2013 1:03:55 PM

Electropherogram Summary Continued ...

sample 11



Overall Results for sample 11 : sample 11

Number of peaks found: 0 Noise: 0.1

Peak table for sample 11 : sample 11

Peak	Aligned Migration Time [s]	Size [bp]	Conc. [pg/μl]	Molarity [pmol/l]	Observations
1	59.15	0	0.00	0.0	
2	61.55	0	0.00	0.0	

Assay Class: High Sensitivity DNA Assay
Data Path: C:\...ents and Settings\Bioanalyzer\2013-11-26\2013-11-26_003.xad

Created: 11/26/2013 12:22:36 PM
Modified: 11/26/2013 1:03:55 PM

Gel Image

