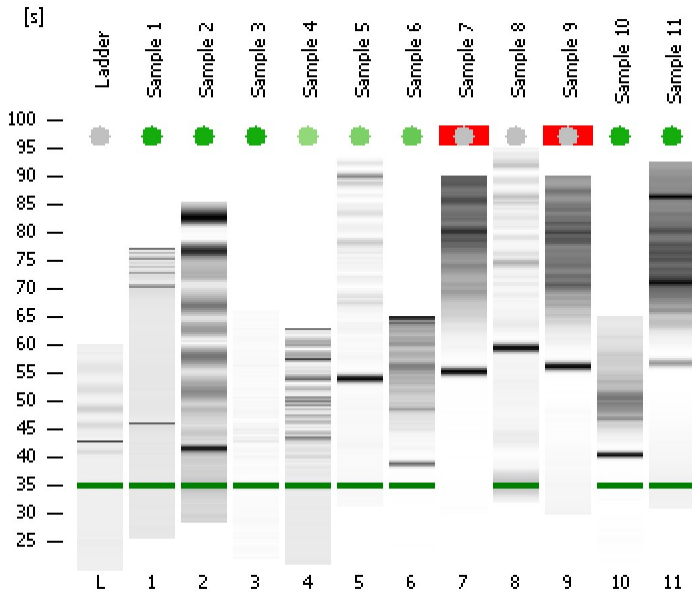


Assay Class: Small RNA  
Data Path: C:\...ents and Settings\Bioanalyzer\2013-11-26\2013-11-26\_004.xad

Created: 11/26/2013 2:28:12 PM  
Modified: 11/26/2013 4:10:22 PM

Electrophoresis File Run Summary



Instrument Information:

Instrument Name: DE13701086      Firmware: C.01.069  
Serial#: DE13701086      Type: G2938B

Assay Information:

Assay Origin Path: C:\Program Files\Agilent\2100 bioanalyzer\2100 expert\assays\RNA\Small RNA Series II.xsy

Assay Class: Small RNA

Version: 1.2

Assay Comments: Small RNA Analysis 6 - 150 nucleotides

© Copyright 2007 - 2009 Agilent Technologies, Inc.

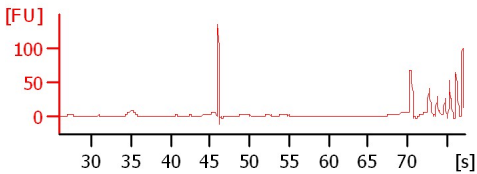
Chip Information:

Chip Lot #:

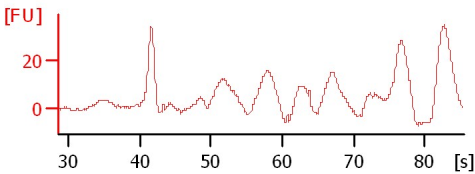
Reagent Kit Lot #:

Chip Comments:

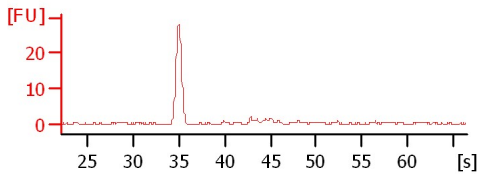
**Sample 1**  
100 % miRNA; Concentration: -5392 pg/µl



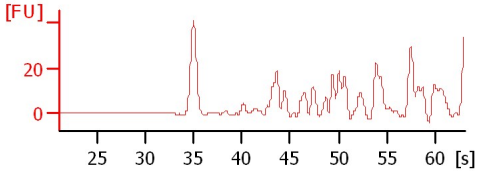
**Sample 2**  
100 % miRNA; Concentration: 5261.30 p...



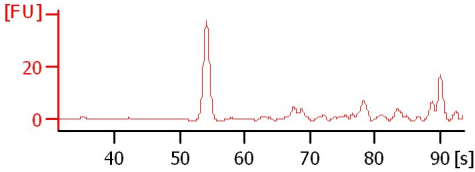
**Sample 3**  
17 % miRNA; Concentration: 84.10 pg/µl



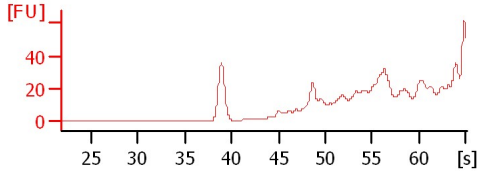
**Sample 4**  
6 % miRNA; Concentration: 237.80 pg/µl



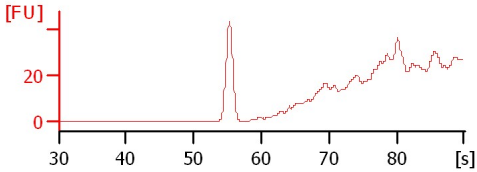
**Sample 5**  
7 % miRNA; Concentration: 1753.40 pg/µl



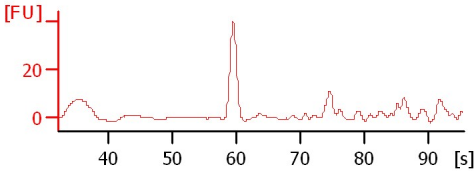
**Sample 6**  
8 % miRNA; Concentration: 174512.20 p...



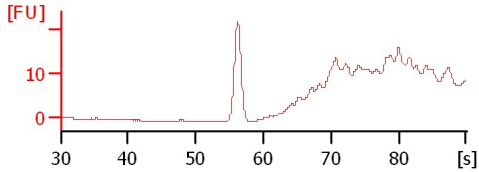
**Sample 7**  
Number of Peaks: 19



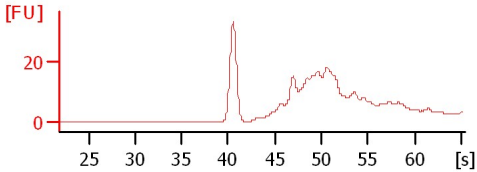
**Sample 8**  
Number of Peaks: 29



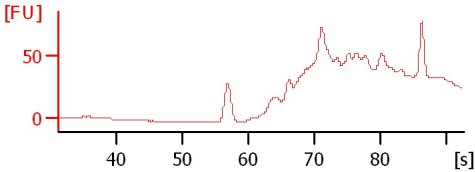
**Sample 9**  
Number of Peaks: 17



**Sample 10**  
28 % miRNA; Concentration: 112516 pg/µl















**Sample 11**  
100 % miRNA; Concentration: -1354014,....



Assay Class: Small RNA  
 Data Path: C:\...ents and Settings\Bioanalyzer\2013-11-26\2013-11-26\_004.xad

Created: 11/26/2013 2:28:12 PM  
 Modified: 11/26/2013 4:10:22 PM

**Electrophoresis File Run Summary (Chip Summary)**

Sample Name	Sample Comment	Status	Result Label	Result Color
Sample 1		✓	100 % miRNA; Concentration: -5392 pg/μl	
Sample 2		✓	100 % miRNA; Concentration: 5261.30 pg/μl	
Sample 3		✓	17 % miRNA; Concentration: 84.10 pg/μl	
Sample 4		✓	6 % miRNA; Concentration: 237.80 pg/μl	
Sample 5		✓	7 % miRNA; Concentration: 1753.40 pg/μl	
Sample 6		✓	8 % miRNA; Concentration: 174512.20 pg/μl	
Sample 7		✓	Number of Peaks: 19	
Sample 8		✓	Number of Peaks: 29	
Sample 9		✓	Number of Peaks: 17	
Sample 10		✓	28 % miRNA; Concentration: 112516 pg/μl	
Sample 11		✓	100 % miRNA; Concentration: -1354014.10 pg/μl	
Ladder		✓	Number of Peaks: 6	
<b>Chip Lot #</b>			<b>Reagent Kit Lot #</b>	

**Chip Comments :**

Assay Class: Small RNA  
Data Path: C:\...ents and Settings\Bioanalyzer\2013-11-26\2013-11-26\_004.xad

Created: 11/26/2013 2:28:12 PM  
Modified: 11/26/2013 4:10:22 PM

**Electrophoresis Assay Details**

**General Analysis Settings**

Number of Available Sample and Ladder Wells (Max.) : 12  
Minimum Visible Range [s] : 30  
Maximum Visible Range [s] : 90  
Start Analysis Time Range [s] : 31  
End Analysis Time Range [s] : 89  
Ladder Concentration [pg/ $\mu$ l] : 2500  
Lower Marker Concentration [pg/ $\mu$ l] : 500  
Upper Marker Concentration [pg/ $\mu$ l] : 0  
Used Lower Marker for Quantitation  
Standard Curve Fit is Logarithmic  
Show Data Aligned to Lower Marker

**Integrator Settings**

Integration Start Time [s] : 30  
Integration End Time [s] : 89  
Slope Threshold : 0.6  
Height Threshold [FU] : 3  
Area Threshold : 0.2  
Width Threshold [s] : 0.5  
Baseline Plateau [s] : 60

**Filter Settings**

Filter Width [s] : 0.5  
Polynomial Order : 4

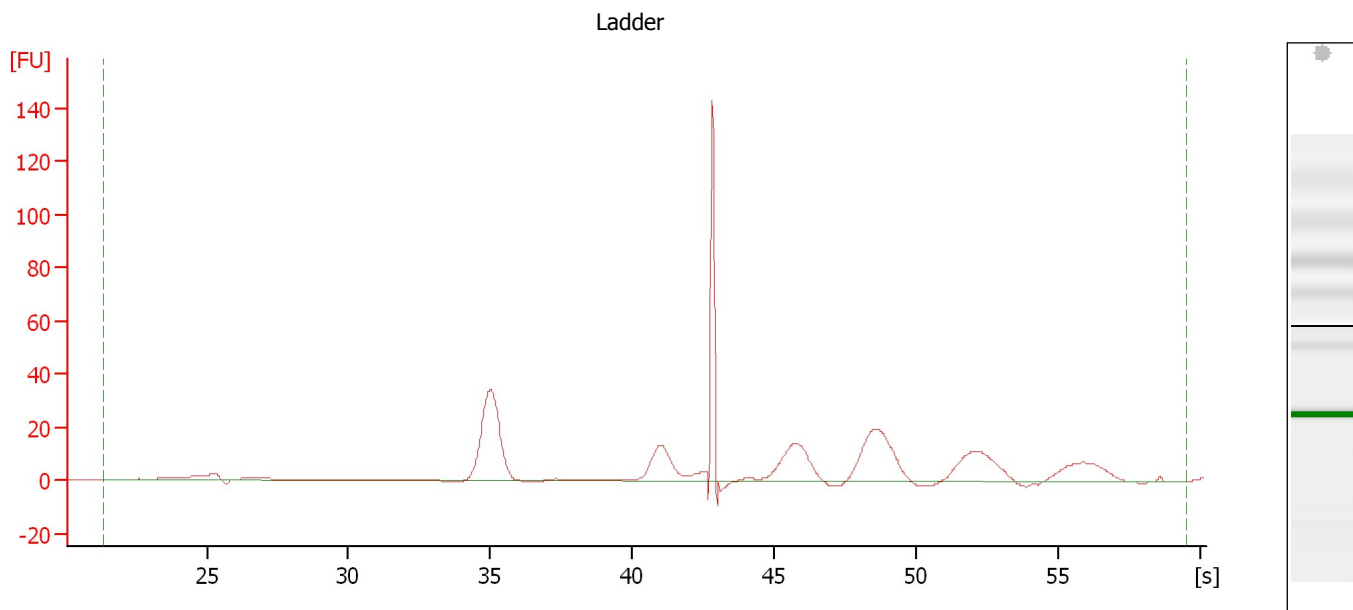
**Ladder**

Ladder Peak	Size
1	4
2	20
3	40
4	60
5	80
6	100
7	150


Assay Class: Small RNA  
Data Path: C:\...ents and Settings\Bioanalyzer\2013-11-26\2013-11-26\_004.xad

Created: 11/26/2013 2:28:12 PM  
Modified: 11/26/2013 4:10:22 PM

**Electropherogram Summary**



**Overall Results for Ladder**

Result Flagging Color: 

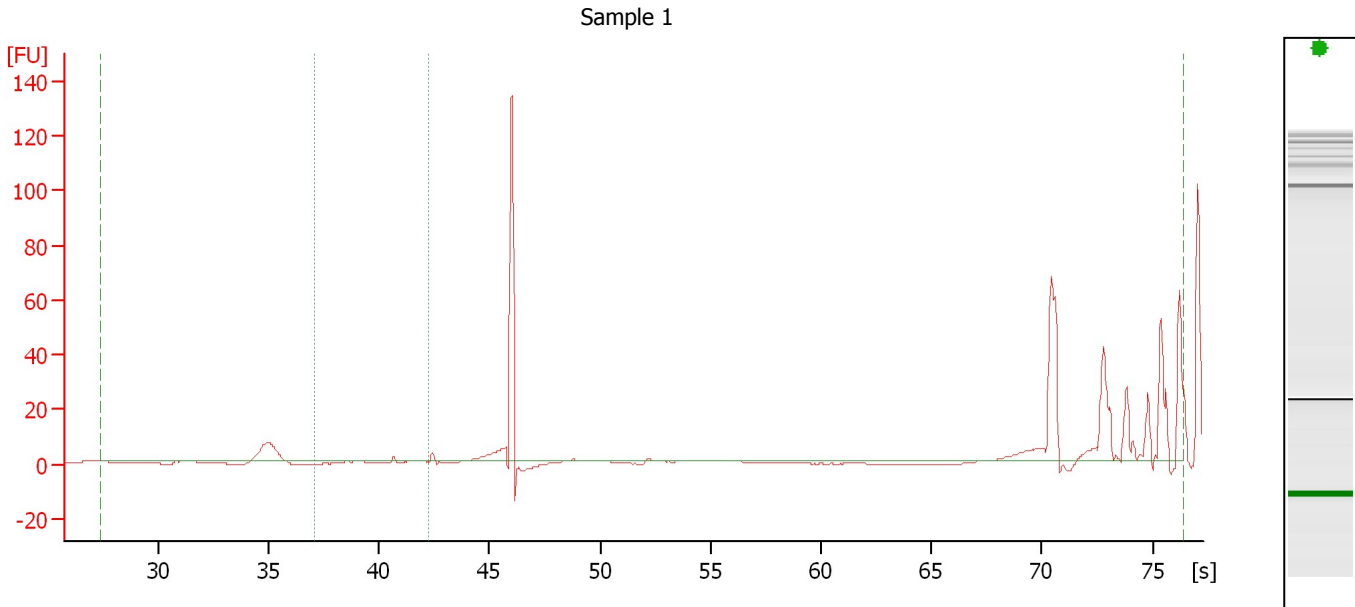
Result Flagging Label:

Number of Peaks: 6

Assay Class: Small RNA  
 Data Path: C:\...ents and Settings\Bioanalyzer\2013-11-26\2013-11-26\_004.xad

Created: 11/26/2013 2:28:12 PM  
 Modified: 11/26/2013 4:10:22 PM

**Electropherogram Summary Continued ...**



**Overall Results for sample 1 : Sample 1**

Small RNA Concentration [pg/μl]:	-5,392.0	Result Flagging Color:	<span style="background-color: green; width: 20px; height: 10px; display: inline-block;"></span>
miRNA Concentration [pg/μl]:	-5,392.0	Result Flagging Label:	100 % miRNA; Concentration: -5392 pg/μl
miRNA / Small RNA Ratio [%]:	100		

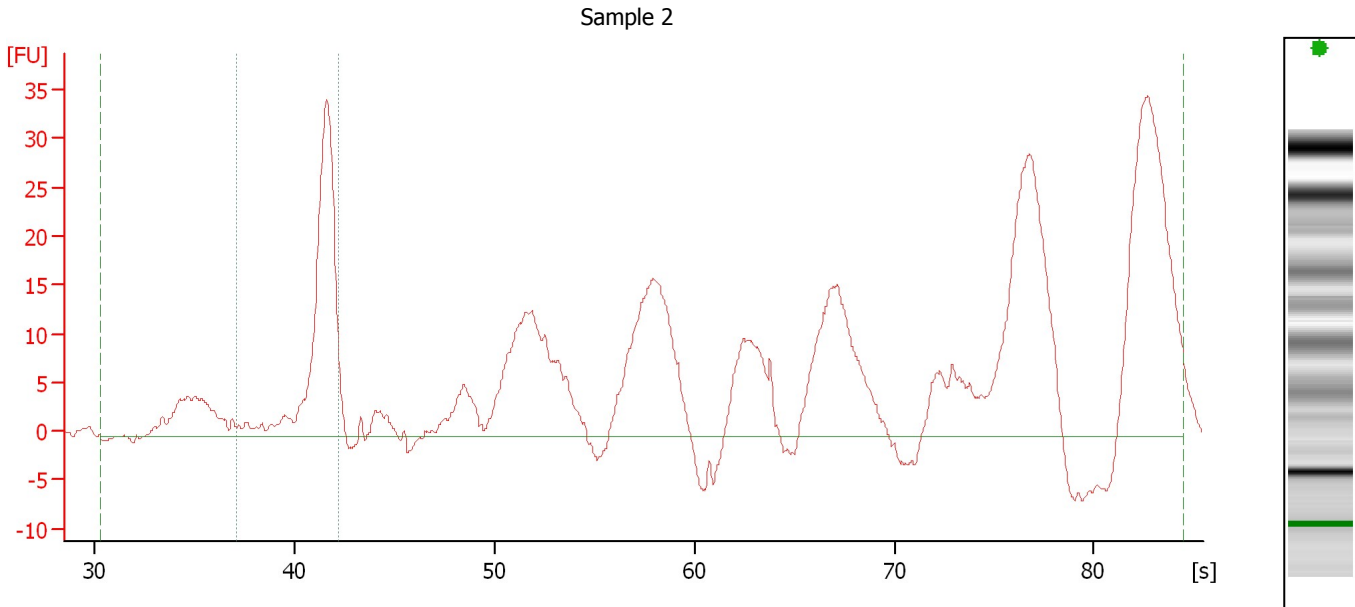
**Region table for sample 1 : Sample 1**

Name	From [nt]	To [nt]	Average Size [nt]	Size distribution in CV [%]	Conc. [pg/μl]	% of Total	Color
Small RNA	0	416	285	50.9	-5,392.0	100	<span style="background-color: purple; width: 15px; height: 10px; display: inline-block;"></span>
miRNA	10	40	19	0.6	-5,392.0	100	<span style="background-color: green; width: 15px; height: 10px; display: inline-block;"></span>

Assay Class: Small RNA  
 Data Path: C:\...ents and Settings\Bioanalyzer\2013-11-26\2013-11-26\_004.xad

Created: 11/26/2013 2:28:12 PM  
 Modified: 11/26/2013 4:10:22 PM

**Electropherogram Summary Continued ...**



**Overall Results for sample 2 : Sample 2**

Small RNA Concentration [pg/μl]:	5,261.3	Result Flagging Color:	<span style="background-color: green; width: 20px; height: 10px; display: inline-block;"></span>
miRNA Concentration [pg/μl]:	5,261.3	Result Flagging Label:	100 % miRNA; Concentration: 5261.30 pg/μl
miRNA / Small RNA Ratio [%]:	100		

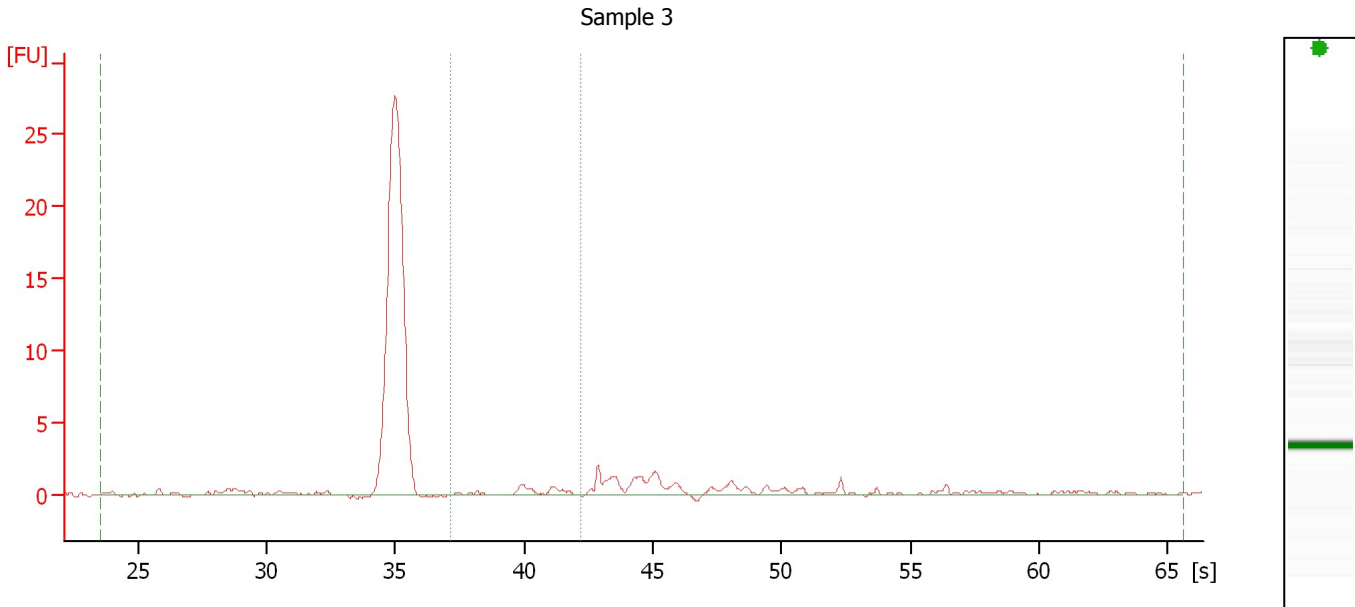
**Region table for sample 2 : Sample 2**

Name	From [nt]	To [nt]	Average Size [nt]	Size distribution in CV [%]	Conc. [pg/μl]	% of Total	Color
Small RNA	0	521	280	62.1	5,261.3	100	<span style="background-color: maroon; width: 15px; height: 10px; display: inline-block;"></span>
miRNA	10	40	27	26.4	5,261.3	100	<span style="background-color: green; width: 15px; height: 10px; display: inline-block;"></span>

Assay Class: Small RNA  
 Data Path: C:\...ents and Settings\Bioanalyzer\2013-11-26\2013-11-26\_004.xad

Created: 11/26/2013 2:28:12 PM  
 Modified: 11/26/2013 4:10:22 PM

**Electropherogram Summary Continued ...**



**Overall Results for sample 3 : Sample 3**

Small RNA Concentration [pg/μl]:	487.2	Result Flagging Color:	<span style="background-color: green; width: 20px; height: 10px; display: inline-block;"></span>
miRNA Concentration [pg/μl]:	84.1	Result Flagging Label:	17 % miRNA; Concentration: 84.10 pg/μl
miRNA / Small RNA Ratio [%]:	17		

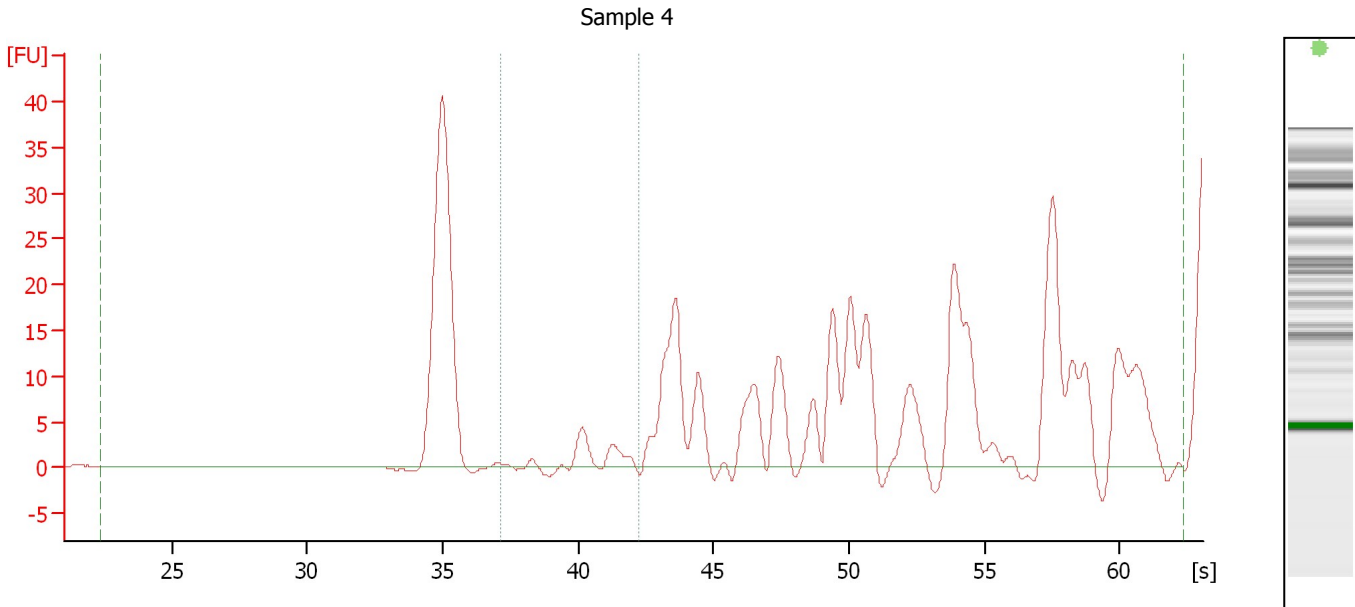
**Region table for sample 3 : Sample 3**

Name	From [nt]	To [nt]	Average Size [nt]	Size distribution in CV [%]	Conc. [pg/μl]	% of Total	Color
Small RNA	0	276	29	100.0	487.2	100	<span style="background-color: purple; width: 15px; height: 10px; display: inline-block;"></span>
miRNA	10	40	20	30.9	84.1	17	<span style="background-color: green; width: 15px; height: 10px; display: inline-block;"></span>

Assay Class: Small RNA  
 Data Path: C:\...ents and Settings\Bioanalyzer\2013-11-26\2013-11-26\_004.xad

Created: 11/26/2013 2:28:12 PM  
 Modified: 11/26/2013 4:10:22 PM

**Electropherogram Summary Continued ...**



**Overall Results for sample 4 : Sample 4**

Small RNA Concentration [pg/μl]:	3,765.3	Result Flagging Color:	<span style="background-color: #90EE90; border: 1px solid black; display: inline-block; width: 20px; height: 10px;"></span>
miRNA Concentration [pg/μl]:	237.8	Result Flagging Label:	6 % miRNA; Concentration: 237.80 pg/μl
miRNA / Small RNA Ratio [%]:	6		

**Region table for sample 4 : Sample 4**

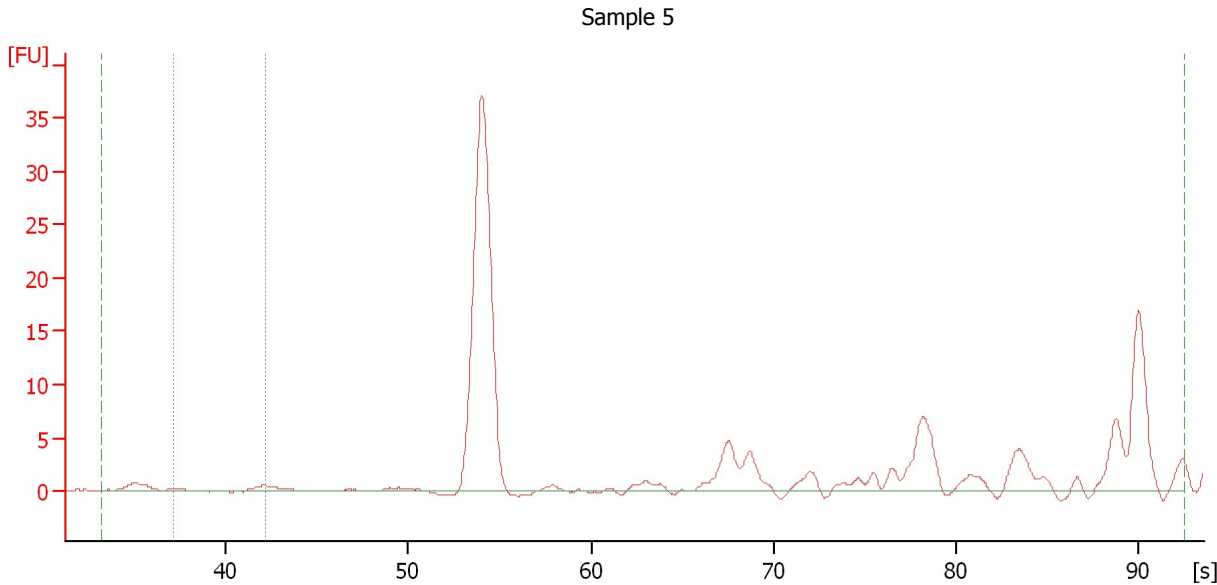
Name	From [nt]	To [nt]	Average Size [nt]	Size distribution in CV [%]	Conc. [pg/μl]	% of Total	Color
Small RNA	0	233	97	69.0	3,765.3	100	<span style="background-color: #800000; border: 1px solid black; display: inline-block; width: 15px; height: 10px;"></span>
miRNA	10	40	21	29.1	237.8	6	<span style="background-color: #008000; border: 1px solid black; display: inline-block; width: 15px; height: 10px;"></span>



Assay Class: Small RNA  
 Data Path: C:\...ents and Settings\Bioanalyzer\2013-11-26\2013-11-26\_004.xad

Created: 11/26/2013 2:28:12 PM  
 Modified: 11/26/2013 4:10:22 PM

**Electropherogram Summary Continued ...**



**Setpoint Deviations for sample 5 : Sample 5**

Height Threshold [FU] : 0.5

**Overall Results for sample 5 : Sample 5**

Small RNA Concentration [pg/μl]:	25,668.1	Result Flagging Color:	<span style="background-color: #90EE90; border: 1px solid black; display: inline-block; width: 20px; height: 10px;"></span>
miRNA Concentration [pg/μl]:	1,753.4	Result Flagging Label:	7 % miRNA; Concentration: 1753.40 pg/μl
miRNA / Small RNA Ratio [%]:	7		

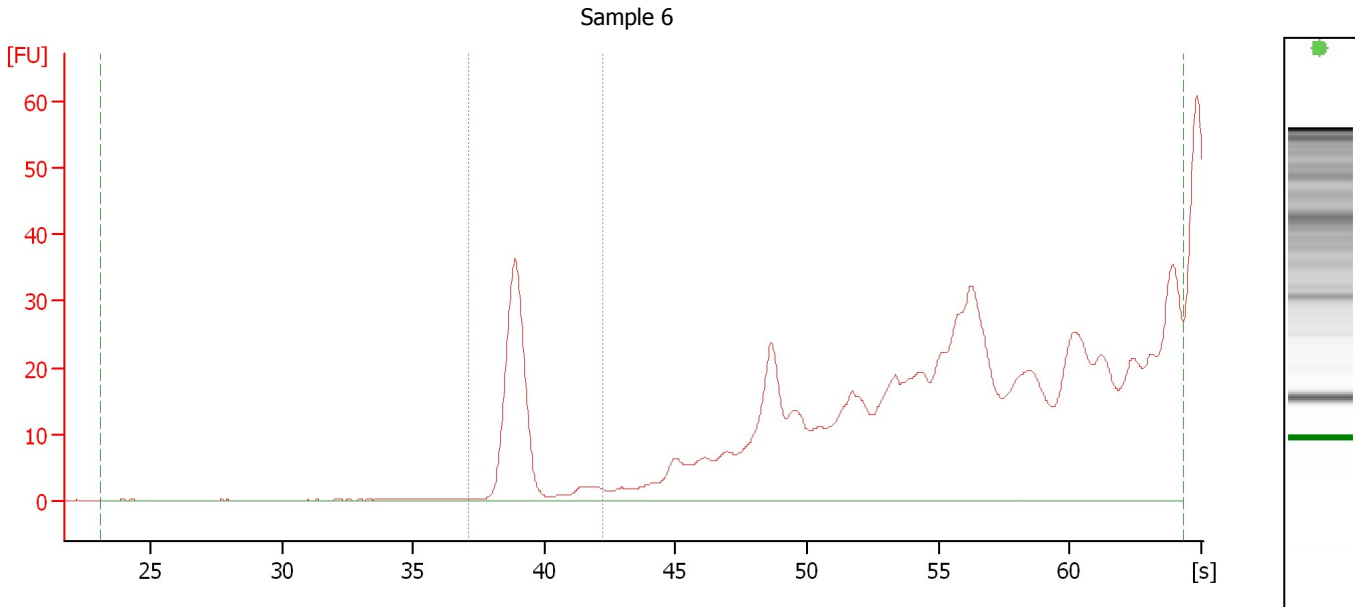
**Region table for sample 5 : Sample 5**

Name	From [nt]	To [nt]	Average Size [nt]	Size distribution in CV [%]	Conc. [pg/μl]	% of Total	Color
Small RNA	0	625	318	62.1	25,668.1	100	<span style="background-color: #800000; border: 1px solid black; display: inline-block; width: 10px; height: 10px;"></span>
miRNA	10	40	29	34.3	1,753.4	7	<span style="background-color: #008000; border: 1px solid black; display: inline-block; width: 10px; height: 10px;"></span>

Assay Class: Small RNA  
 Data Path: C:\...ents and Settings\Bioanalyzer\2013-11-26\2013-11-26\_004.xad

Created: 11/26/2013 2:28:12 PM  
 Modified: 11/26/2013 4:10:22 PM

**Electropherogram Summary Continued ...**



**Setpoint Deviations for sample 6 : Sample 6**

Height Threshold [FU] : 0.1

**Overall Results for sample 6 : Sample 6**

Small RNA Concentration [pg/μl]:	2,078,223.0	Result Flagging Color:	<span style="background-color: #00FF00; display: inline-block; width: 20px; height: 10px;"></span>
miRNA Concentration [pg/μl]:	174,512.2	Result Flagging Label:	8 % miRNA; Concentration: 174512.20 pg/μl
miRNA / Small RNA Ratio [%]:	8		

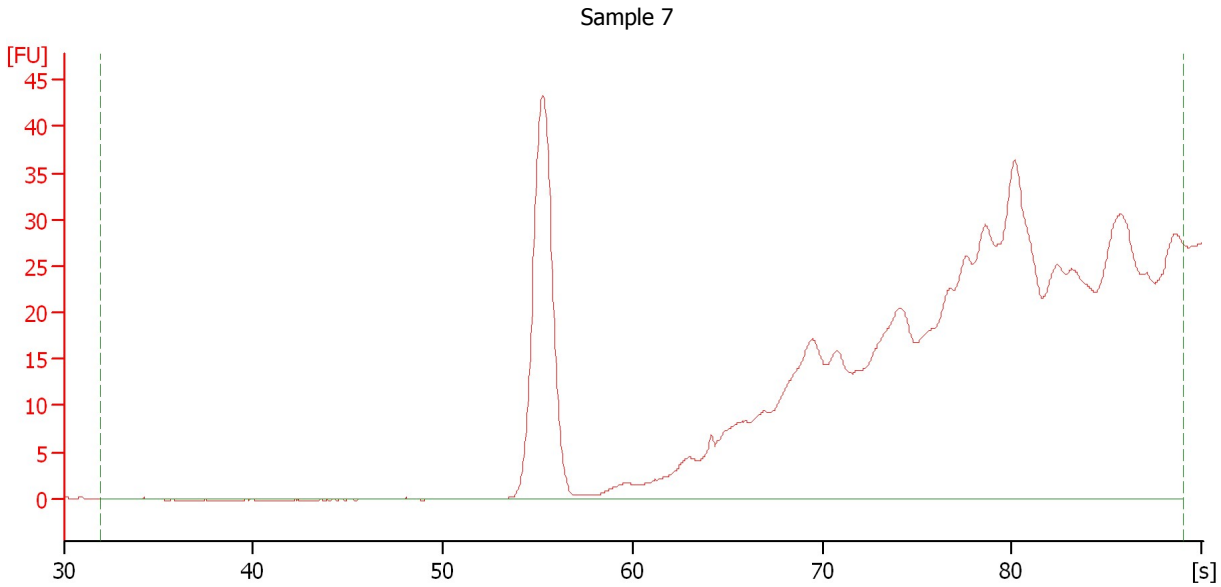
**Region table for sample 6 : Sample 6**

Name	From [nt]	To [nt]	Average Size [nt]	Size distribution in CV [%]	Conc. [pg/μl]	% of Total	Color
Small RNA	0	259	143	49.7	2,078,223.3	100	<span style="background-color: #800000; display: inline-block; width: 10px; height: 10px;"></span>
miRNA	10	40	16	28.4	174,512.2	8	<span style="background-color: #008000; display: inline-block; width: 10px; height: 10px;"></span>

Assay Class: Small RNA  
Data Path: C:\...ents and Settings\Bioanalyzer\2013-11-26\2013-11-26\_004.xad

Created: 11/26/2013 2:28:12 PM  
Modified: 11/26/2013 4:10:22 PM

**Electropherogram Summary Continued ...**



**Setpoint Deviations for sample 7 : Sample 7**

Height Threshold [FU] : 0.05

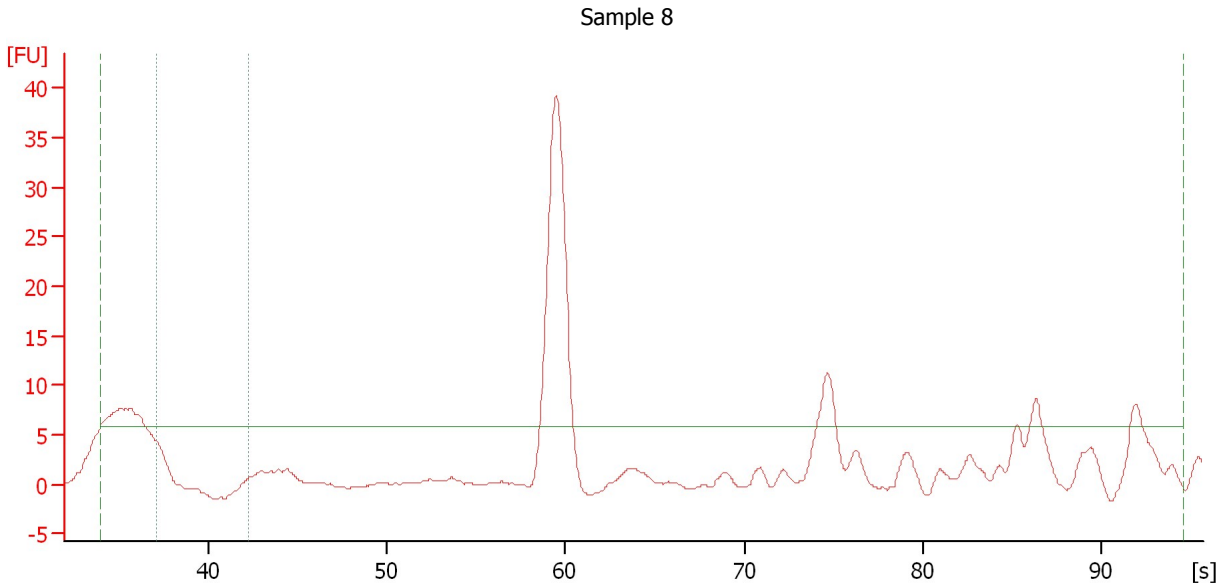
**Overall Results for sample 7 : Sample 7**

Result Flagging Color:  Result Flagging Label: Number of Peaks: 19

Assay Class: Small RNA  
 Data Path: C:\...ents and Settings\Bioanalyzer\2013-11-26\2013-11-26\_004.xad

Created: 11/26/2013 2:28:12 PM  
 Modified: 11/26/2013 4:10:22 PM

**Electropherogram Summary Continued ...**



**Setpoint Deviations for sample 8 : Sample 8**

Height Threshold [FU] : 0.5

**Overall Results for sample 8 : Sample 8**

Small RNA Concentration [pg/μl]:	9,772.2	Result Flagging Color:	<span style="background-color: #cccccc; border: 1px solid black; display: inline-block; width: 20px; height: 10px;"></span>
miRNA Concentration [pg/μl]:	0.0	Result Flagging Label:	Number of Peaks: 29
miRNA / Small RNA Ratio [%]:	0		

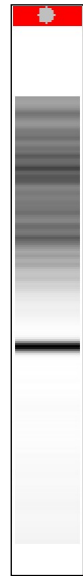
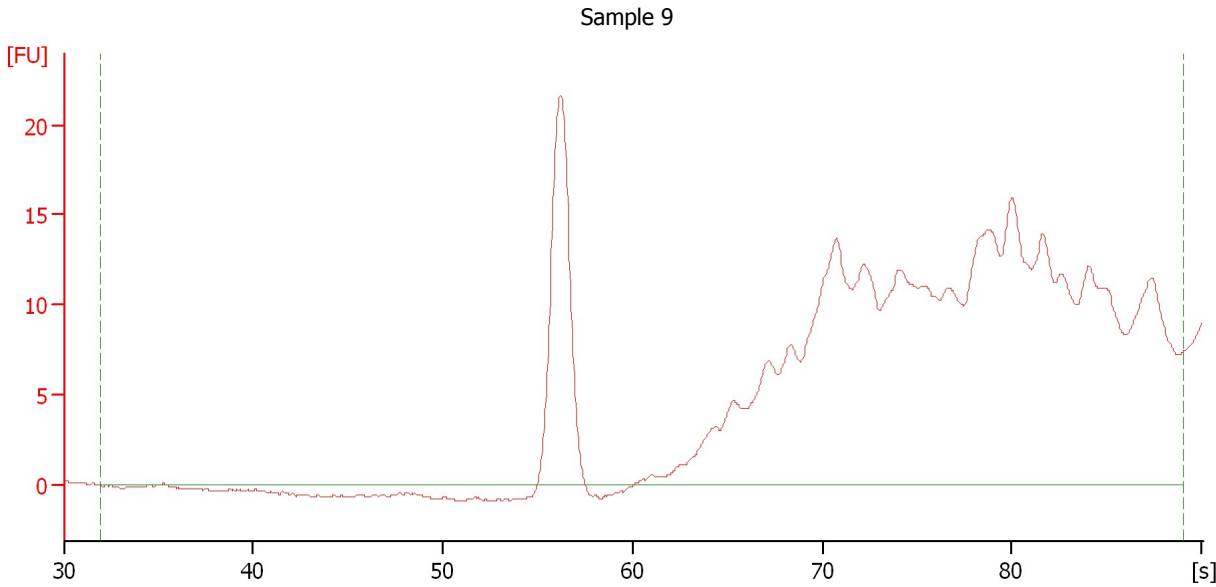
**Region table for sample 8 : Sample 8**

Name	From [nt]	To [nt]	Average Size [nt]	Size distribution in CV [%]	Conc. [pg/μl]	% of Total	Color
Small RNA	1	652	217	51.1	9,772.2	100	<span style="background-color: #800040; display: inline-block; width: 10px; height: 10px;"></span>
miRNA	10	40	0	0.0	0.0	0	<span style="background-color: #008080; display: inline-block; width: 10px; height: 10px;"></span>

Assay Class: Small RNA  
Data Path: C:\...ents and Settings\Bioanalyzer\2013-11-26\2013-11-26\_004.xad

Created: 11/26/2013 2:28:12 PM  
Modified: 11/26/2013 4:10:22 PM

**Electropherogram Summary Continued ...**



**Setpoint Deviations for sample 9 : Sample 9**

Height Threshold [FU] : 1

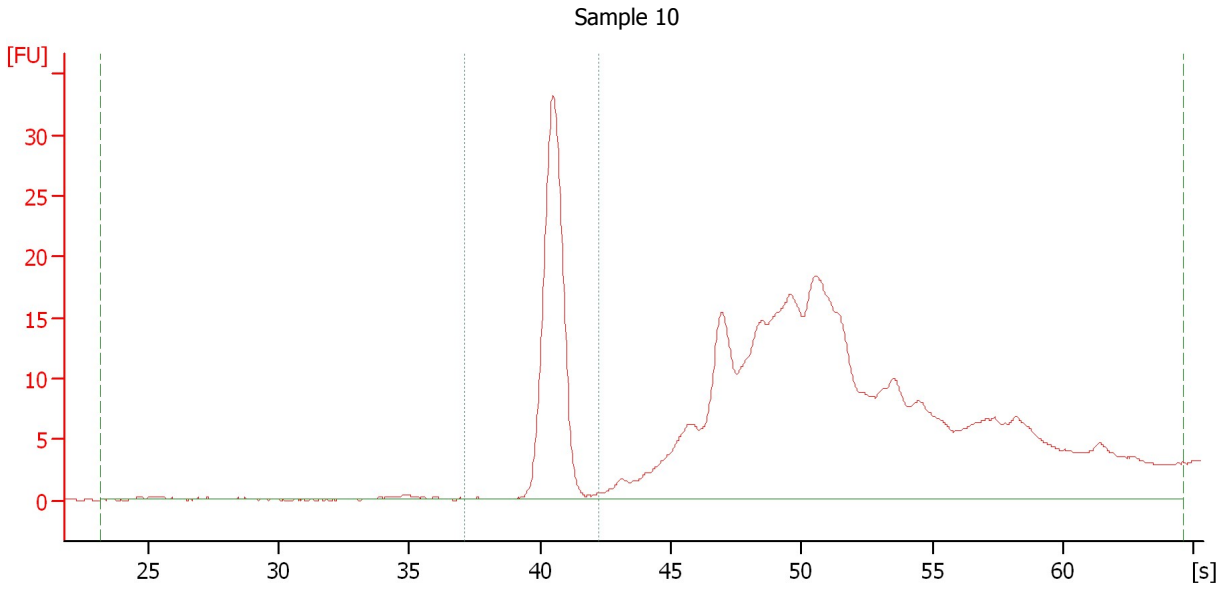
**Overall Results for sample 9 : Sample 9**

Result Flagging Color:  Result Flagging Label: Number of Peaks: 17

Assay Class: Small RNA  
 Data Path: C:\...ents and Settings\Bioanalyzer\2013-11-26\2013-11-26\_004.xad

Created: 11/26/2013 2:28:12 PM  
 Modified: 11/26/2013 4:10:22 PM

**Electropherogram Summary Continued ...**



**Setpoint Deviations for sample 10 : Sample 10**

Height Threshold [FU] : 0.1

**Overall Results for sample 10 : Sample 10**

Small RNA Concentration [pg/μl]:	404,793.7	Result Flagging Color:	<span style="background-color: green; color: black;"> </span>
miRNA Concentration [pg/μl]:	112,516.0	Result Flagging Label:	28 % miRNA; Concentration: 112516 pg/μl
miRNA / Small RNA Ratio [%]:	28		

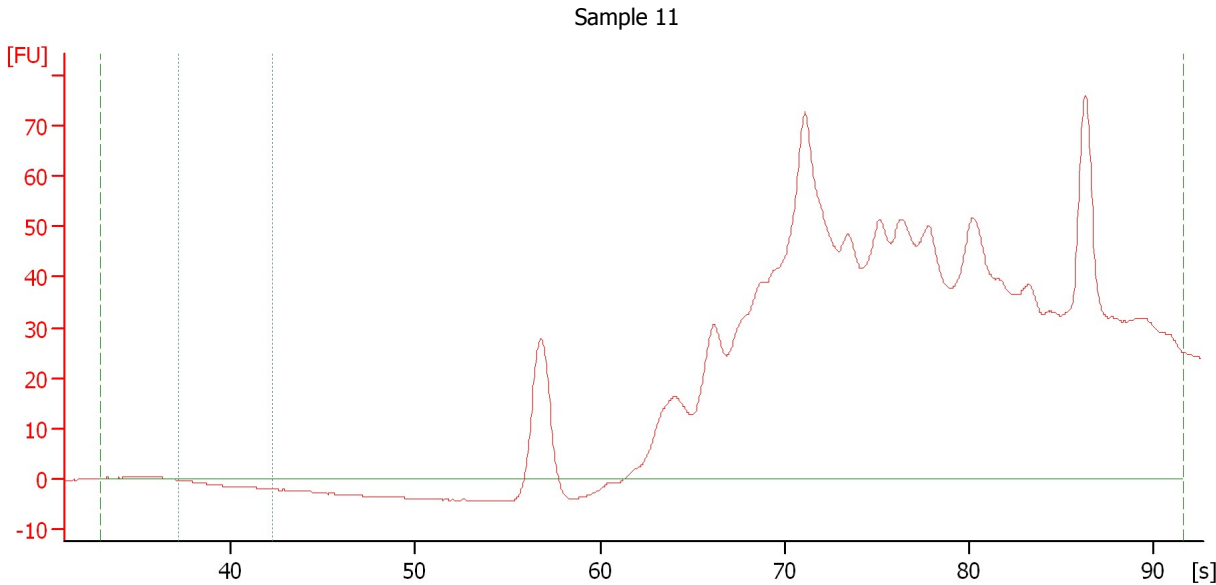
**Region table for sample 10 : Sample 10**

Name	From [nt]	To [nt]	Average Size [nt]	Size distribution in CV [%]	Conc. [pg/μl]	% of Total	Color
Small RNA	0	262	101	58.9	404,793.7	100	<span style="background-color: maroon; color: black;"> </span>
miRNA	10	40	19	10.8	112,516.0	28	<span style="background-color: green; color: black;"> </span>

Assay Class: Small RNA  
 Data Path: C:\...ents and Settings\Bioanalyzer\2013-11-26\2013-11-26\_004.xad

Created: 11/26/2013 2:28:12 PM  
 Modified: 11/26/2013 4:10:22 PM

**Electropherogram Summary Continued ...**



**Setpoint Deviations for sample 11 : Sample 11**

Height Threshold [FU] : 0.2

**Overall Results for sample 11 : Sample 11**

Small RNA Concentration [pg/μl]:	-1,354,014.0	Result Flagging Color:	<span style="background-color: green; color: green;"> </span>
miRNA Concentration [pg/μl]:	-1,354,014.0	Result Flagging Label:	100 % miRNA; Concentration: -1354014.10 pg/μl
miRNA / Small RNA Ratio [%]:	100		

**Region table for sample 11 : Sample 11**

Name	From [nt]	To [nt]	Average Size [nt]	Size distribution in CV [%]	Conc. [pg/μl]	% of Total	Col or
Small RNA	0	614	426	24.5	-1,354,014.1	100	<span style="background-color: maroon; color: maroon;"> </span>
miRNA	10	40	0	0.0	-1,354,014.1	100	<span style="background-color: teal; color: teal;"> </span>

Assay Class: Small RNA  
Data Path: C:\...ents and Settings\Bioanalyzer\2013-11-26\2013-11-26\_004.xad

Created: 11/26/2013 2:28:12 PM  
Modified: 11/26/2013 4:10:22 PM

Gel Image

