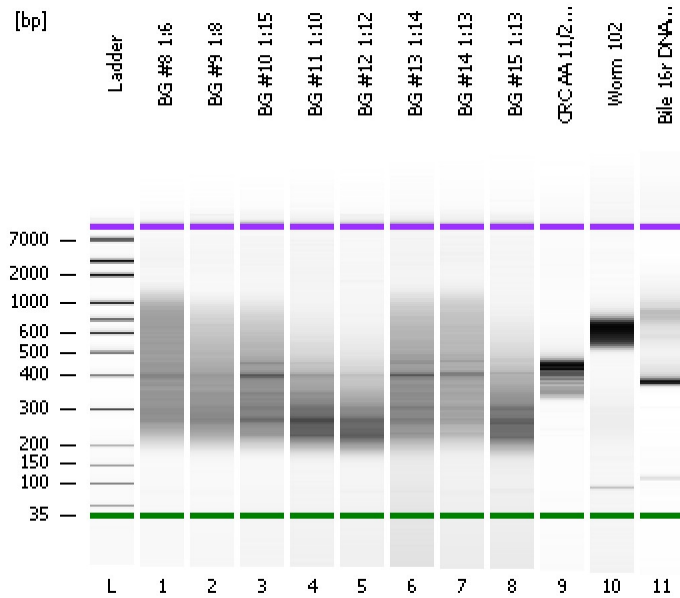


Assay Class: High Sensitivity DNA Assay  
Data Path: C:\...ents and Settings\Bioanalyzer\2013-11-27\2013-11-27\_001.xad

Created: 11/27/2013 12:16:51 PM  
Modified: 11/27/2013 1:04:09 PM

Electrophoresis File Run Summary



Instrument Information:

Instrument Name: DE13701086      Firmware: C.01.069  
Serial#: DE13701086      Type: G2938B

Assay Information:

Assay Origin Path: C:\Program Files\Agilent\2100 bioanalyzer\2100 expert\assays\dsDNA\High Sensitivity DNA.xsy  
Assay Class: High Sensitivity DNA Assay  
Version: 1.03  
Assay Comments: Copyright © 2003-2010 Agilent Technologies

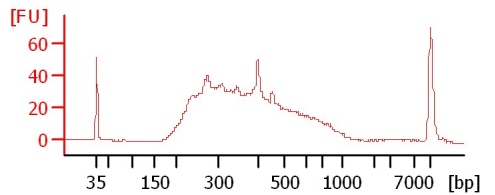
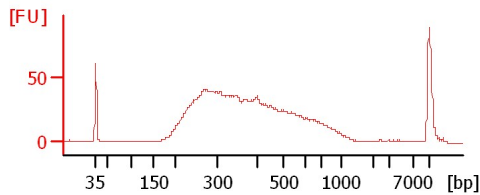
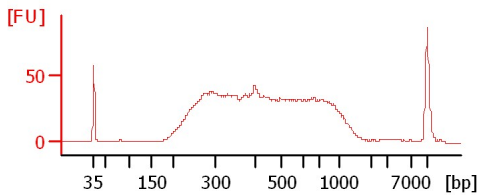
Chip Information:

Chip Lot #:   
Reagent Kit Lot #:   
Chip Comments:

BG #8 1:6

BG #9 1:8

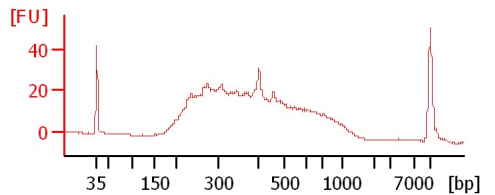
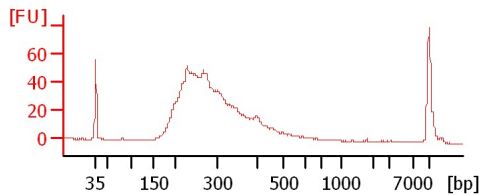
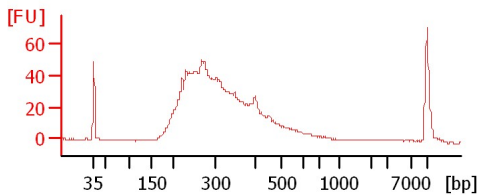
BG #10 1:15



BG #11 1:10

BG #12 1:12

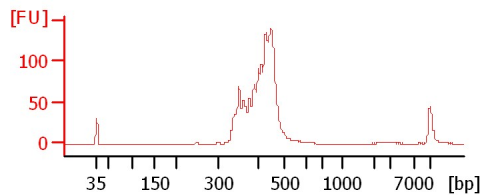
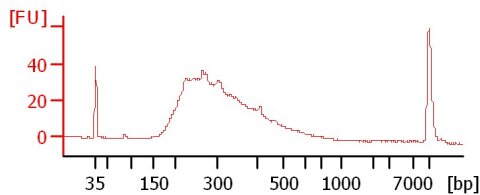
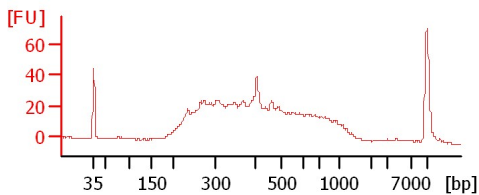
BG #13 1:14



BG #14 1:13

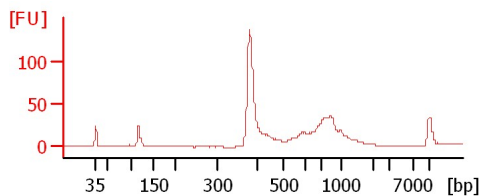
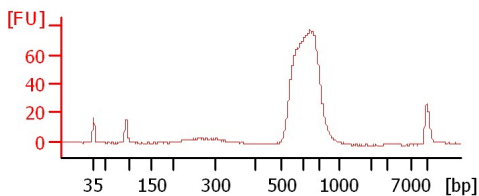
BG #15 1:13

CRC AA 11/22/13 1:2



Worm 102

Bile 16r DNA Pool 1:14



Assay Class: High Sensitivity DNA Assay  
Data Path: C:\...ents and Settings\Bioanalyzer\2013-11-27\2013-11-27\_001.xad

Created: 11/27/2013 12:16:51 PM  
Modified: 11/27/2013 1:04:09 PM

**Electrophoresis File Run Summary (Chip Summary)**

Sample Name	Sample Comment	Rest. Digest	Status	Observation	Result Label	Result Color
BG #8 1:6		<input type="checkbox"/>	✓			
BG #9 1:8		<input type="checkbox"/>	✓			
BG #10 1:15		<input type="checkbox"/>	✓			
BG #11 1:10		<input type="checkbox"/>	✓			
BG #12 1:12		<input type="checkbox"/>	✓			
BG #13 1:14		<input type="checkbox"/>	✓			
BG #14 1:13		<input type="checkbox"/>	✓			
BG #15 1:13		<input type="checkbox"/>	✓			
CRC AA 11/22/13 1:2		<input type="checkbox"/>	✓			
Worm 102		<input type="checkbox"/>	✓			
Bile 16r DNA Pool 1:14		<input type="checkbox"/>	✓			
Ladder		<input type="checkbox"/>	✓			

**Chip Lot #**

**Reagent Kit Lot #**

**Chip Comments :**

Assay Class: High Sensitivity DNA Assay  
Data Path: C:\...ents and Settings\Bioanalyzer\2013-11-27\2013-11-27\_001.xad

Created: 11/27/2013 12:16:51 PM  
Modified: 11/27/2013 1:04:09 PM

**Electrophoresis Assay Details**

**General Analysis Settings**

Number of Available Sample and Ladder Wells (Max.) : 12  
Minimum Visible Range [s] : 32  
Maximum Visible Range [s] : 138  
Start Analysis Time Range [s] : 33  
End Analysis Time Range [s] : 137.5  
Ladder Concentration [pg/μl] : 1950  
Uses Standard Area for Ladder Fragments  
Lower Marker Concentration [pg/μl] : 125  
Upper Marker Concentration [pg/μl] : 75  
Used Upper Marker for Quantitation  
Standard Curve Fit is Point to Point  
Show Data Aligned to Lower and Upper Marker

**Integrator Settings**

Integration Start Time [s] : 33.05  
Integration End Time [s] : 137  
Slope Threshold : 0.8  
Height Threshold [FU] : 5  
Area Threshold : 0.1  
Width Threshold [s] : 0.6  
Baseline Plateau [s] : 0.5

**Filter Settings**

Filter Width [s] : 0.5  
Polynomial Order : 4

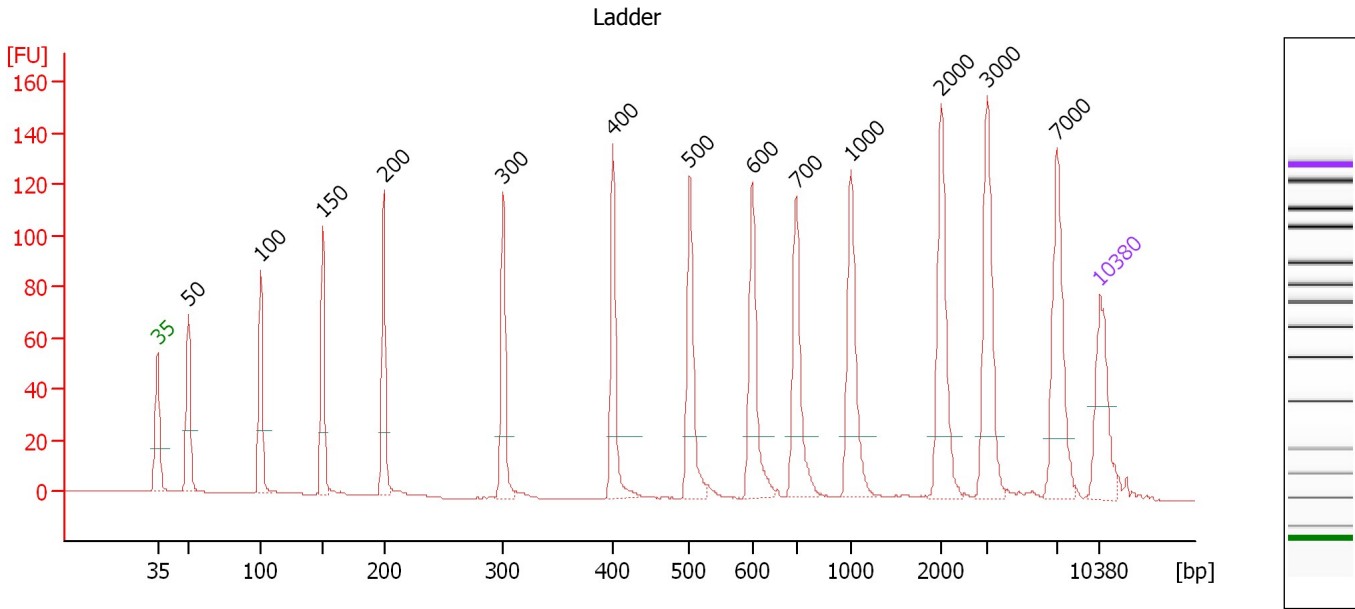
**Ladder**

Ladder Peak	Size	Area
1	35	160
2	50	210
3	100	208
4	150	221
5	200	242
6	300	270
7	400	305
8	500	306
9	600	336
10	700	321
11	1000	366
12	2000	413
13	3000	411
14	7000	400
15	10380	214

Assay Class: High Sensitivity DNA Assay  
 Data Path: C:\...ents and Settings\Bioanalyzer\2013-11-27\2013-11-27\_001.xad

Created: 11/27/2013 12:16:51 PM  
 Modified: 11/27/2013 1:04:09 PM

**Electropherogram Summary**



**Overall Results for Ladder**

Noise: 0.2

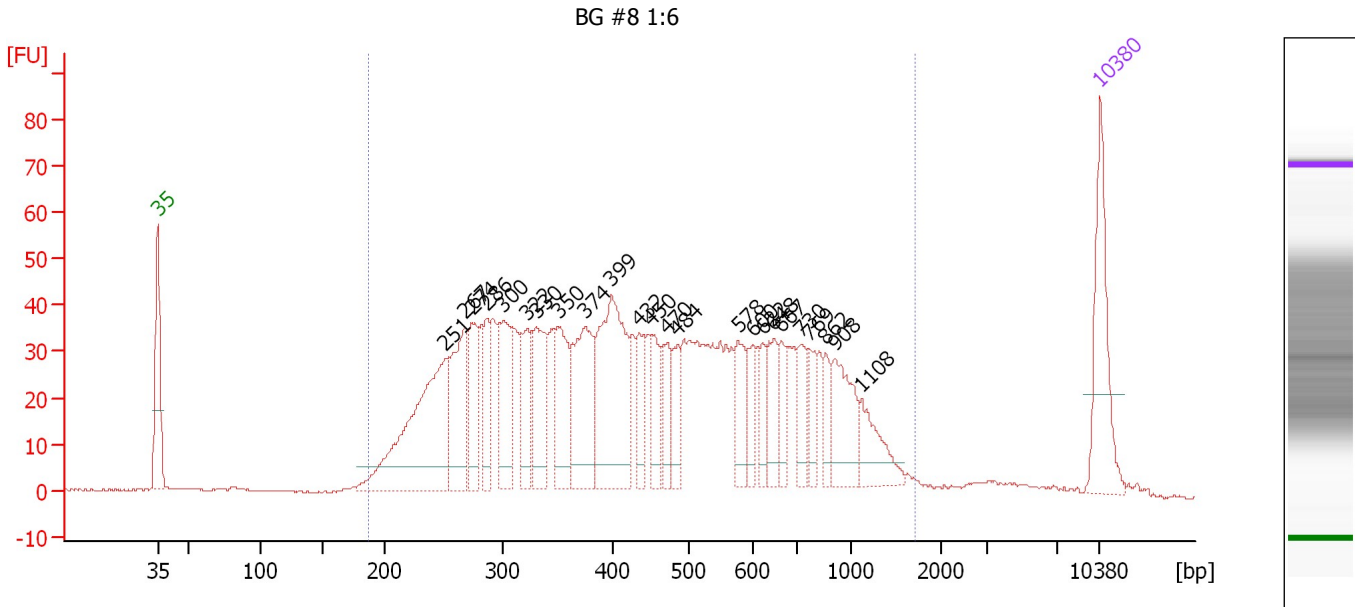
**Peak table for Ladder**

Peak	Aligned Migration Time [s]	Size [bp]	Conc. [pg/μl]	Molarity [pmol/l]	Observations
1	43.00	35	125.00	5,411.3	Lower Marker
2	45.28	50	150.00	4,545.5	Ladder Peak
3	50.64	100	150.00	2,272.7	Ladder Peak
4	55.28	150	150.00	1,515.2	Ladder Peak
5	59.80	200	150.00	1,136.4	Ladder Peak
6	68.69	300	150.00	757.6	Ladder Peak
7	76.82	400	150.00	568.2	Ladder Peak
8	82.53	500	150.00	454.5	Ladder Peak
9	87.18	600	150.00	378.8	Ladder Peak
10	90.44	700	150.00	324.7	Ladder Peak
11	94.51	1,000	150.00	227.3	Ladder Peak
12	101.21	2,000	150.00	113.6	Ladder Peak
13	104.60	3,000	150.00	75.8	Ladder Peak
14	109.78	7,000	150.00	32.5	Ladder Peak
15	113.00	10,380	75.00	10.9	Upper Marker

Assay Class: High Sensitivity DNA Assay  
 Data Path: C:\...ents and Settings\Bioanalyzer\2013-11-27\2013-11-27\_001.xad

Created: 11/27/2013 12:16:51 PM  
 Modified: 11/27/2013 1:04:09 PM

**Electropherogram Summary Continued ...**



**Overall Results for sample 1 : BG #8 1:6**

Number of peaks found: 24                      Corr. Area 1: 1,544.8  
 Noise: 0.2

**Peak table for sample 1 : BG #8 1:6**

Peak	Aligned Migration Time [s]	Size [bp]	Conc. [pg/μl]	Molarity [pmol/l]	Observations
1	43.00	35	125.00	5,411.3	Lower Marker
2	64.35	251	240.47	1,450.4	
3	65.78	267	109.51	620.7	
4	66.36	274	70.55	390.3	
5	67.48	286	50.39	266.5	
6	68.69	300	81.56	411.8	
7	70.44	322	57.00	268.6	
8	71.11	330	82.38	378.5	
9	72.76	350	76.48	331.0	
10	74.73	374	114.79	464.6	
11	76.70	399	173.17	658.3	
12	78.67	432	36.85	129.1	
13	79.70	450	37.78	127.1	
14	80.82	470	38.01	122.5	
15	81.63	484	32.51	101.8	
16	86.15	578	41.19	108.0	
17	87.18	600	25.60	64.6	
18	87.89	622	25.88	63.1	
19	88.74	648	40.79	95.4	
20	89.37	667	28.30	64.3	
21	90.85	730	27.40	56.9	
22	91.38	769	23.93	47.1	
23	92.64	862	21.42	37.7	
24	93.26	908	63.33	105.7	
25	95.23	1,108	41.36	56.5	

Assay Class: High Sensitivity DNA Assay  
 Data Path: C:\...ents and Settings\Bioanalyzer\2013-11-27\2013-11-27\_001.xad


Created: 11/27/2013 12:16:51 PM  
 Modified: 11/27/2013 1:04:09 PM

### Electropherogram Summary Continued ...

#### ... Peak table for sample 1 : BG #8 1:6

Peak	Aligned Migration Time [s]	Size [bp]	Conc. [pg/ $\mu$ l]	Molarity [pmol/l]	Observations
26	113.00	10,380	75.00	10.9	Upper Marker

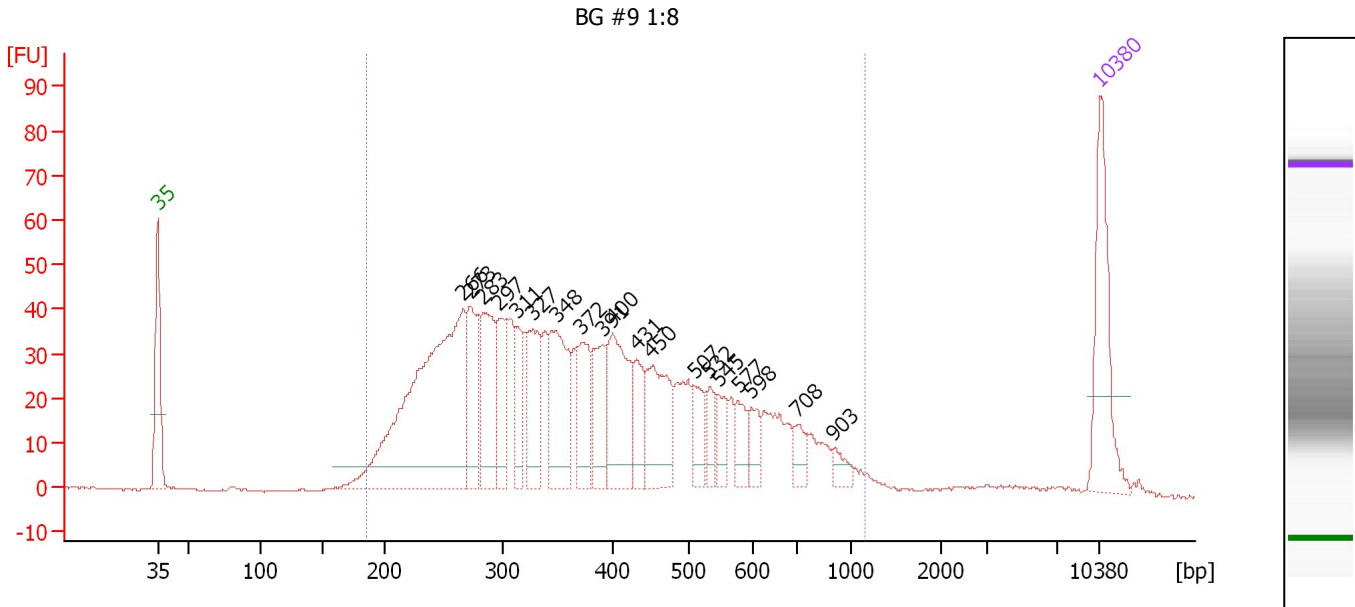
#### Region table for sample 1 : BG #8 1:6

From [bp]	To [bp]	Average Size [bp]	Molarity [pmol/l]	Conc. [pg/ $\mu$ l]	Corr. Area	% of Total	Size distribution in CV [%]	Color
188	1,700	499	8,720.4	2,177.06	1,544.8	96	51.0	

Assay Class: High Sensitivity DNA Assay  
 Data Path: C:\...ents and Settings\Bioanalyzer\2013-11-27\2013-11-27\_001.xad

Created: 11/27/2013 12:16:51 PM  
 Modified: 11/27/2013 1:04:09 PM

**Electropherogram Summary Continued ...**



**Overall Results for sample 2 : BG #9 1:8**

Number of peaks found: 19                      Corr. Area 1: 1,314.0  
 Noise: 0.2

**Peak table for sample 2 : BG #9 1:8**

Peak	Aligned Migration Time [s]	Size [bp]	Conc. [pg/μl]	Molarity [pmol/l]	Observations
1	43.00	35	125.00	5,411.3	Lower Marker
2	65.68	266	396.73	2,258.6	
3	66.26	273	81.77	454.3	
4	67.20	283	88.74	474.6	
5	68.41	297	59.71	304.7	
6	69.62	311	41.46	201.7	
7	70.92	327	75.34	348.6	
8	72.58	348	101.17	440.7	
9	74.50	372	59.39	242.2	
10	76.12	391	53.74	208.0	
11	76.83	400	97.63	369.5	
12	78.58	431	37.30	131.2	
13	79.66	450	81.61	275.0	
14	82.84	507	27.98	83.7	
15	84.01	532	20.85	59.4	
16	84.63	545	21.49	59.7	
17	86.11	577	24.26	63.7	
18	87.10	598	21.00	53.2	
19	90.55	708	17.52	37.5	
20	93.19	903	11.43	19.2	
21	113.00	10,380	75.00	10.9	Upper Marker

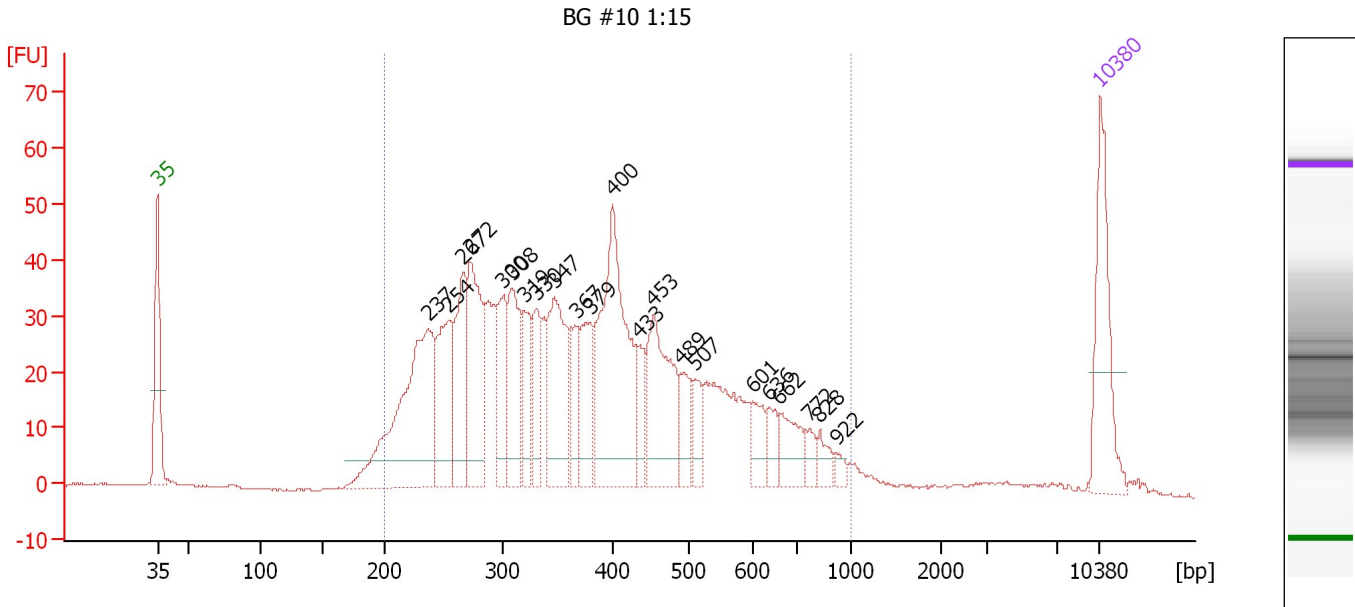
**Region table for sample 2 : BG #9 1:8**

From [bp]	To [bp]	Average Size [bp]	Molarity [pmol/l]	Conc. [pg/μl]	Corr. Area	% of Total	Size distribution in CV [%]	Color
186	1,149	405	7,688.5	1,701.87	1,314.0	96	40.4	Blue

Assay Class: High Sensitivity DNA Assay  
 Data Path: C:\...ents and Settings\Bioanalyzer\2013-11-27\2013-11-27\_001.xad

Created: 11/27/2013 12:16:51 PM  
 Modified: 11/27/2013 1:04:09 PM

**Electropherogram Summary Continued ...**



**Overall Results for sample 3 : BG #10 1:15**

Number of peaks found: 22                      Corr. Area 1: 1,157.9  
 Noise: 0.2

**Peak table for sample 3 : BG #10 1:15**


Peak	Aligned Migration Time [s]	Size [bp]	Conc. [pg/μl]	Molarity [pmol/l]	Observations
1	43.00	35	125.00	5,411.3	Lower Marker
2	63.10	237	255.74	1,634.1	
3	64.63	254	98.36	585.8	
4	65.72	267	93.16	529.5	
5	66.21	272	129.19	719.2	
6	68.65	300	61.19	309.4	
7	69.33	308	83.17	409.3	
8	70.23	319	50.85	241.5	
9	71.14	330	49.53	227.3	
10	72.49	347	114.27	499.3	
11	74.16	367	38.95	160.7	
12	75.11	379	63.07	252.1	
13	76.83	400	210.81	798.2	
14	78.68	433	28.54	100.0	
15	79.85	453	115.69	386.9	
16	81.88	489	33.55	104.0	
17	82.88	507	24.91	74.4	
18	87.21	601	27.30	68.8	
19	88.34	636	18.78	44.8	
20	89.20	662	35.18	80.5	
21	91.41	772	12.14	23.8	
22	92.18	828	14.46	26.5	
23	93.45	922	6.44	10.6	
24	113.00	10,380	75.00	10.9	Upper Marker



Assay Class: High Sensitivity DNA Assay  
Data Path: C:\...ents and Settings\Bioanalyzer\2013-11-27\2013-11-27\_001.xad

Created: 11/27/2013 12:16:51 PM  
Modified: 11/27/2013 1:04:09 PM

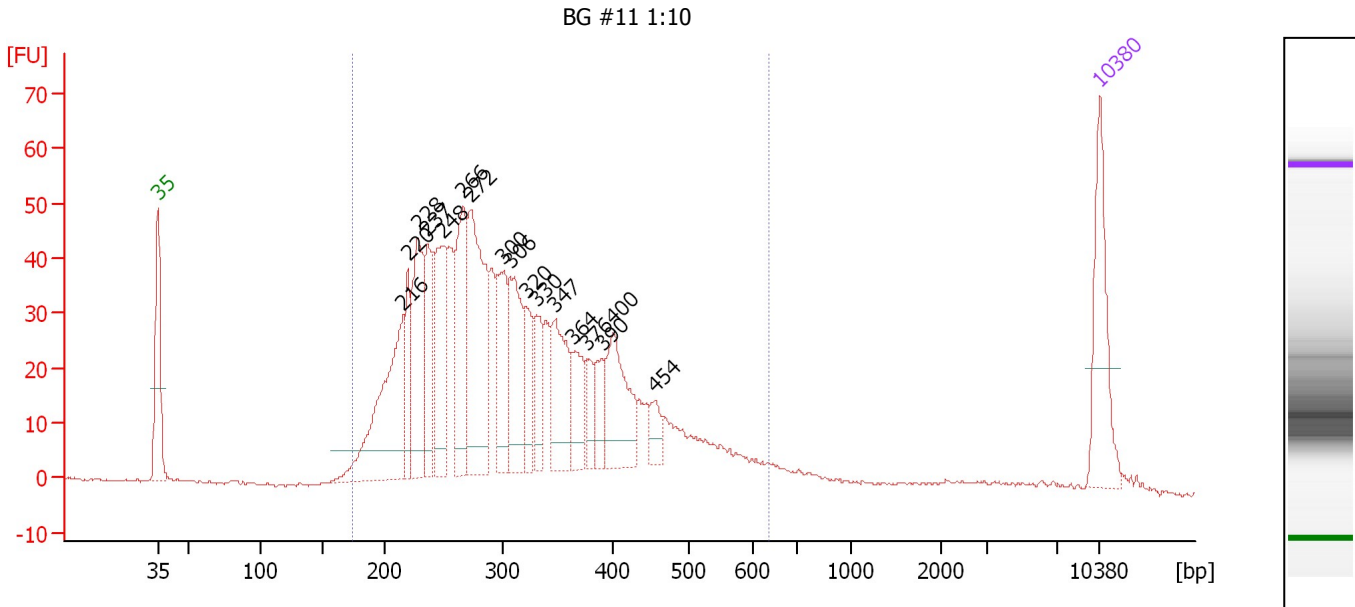
**Electropherogram Summary Continued ...****... Region table for sample 3 : BG #10 1:15**

<b>From [bp]</b>	<b>To [bp]</b>	<b>Average Size [bp]</b>	<b>Molarity [pmol/l]</b>	<b>Conc. [pg/μl]</b>	<b>Corr. Area</b>	<b>% of Total</b>	<b>Size distribution in CV [%]</b>	<b>Co lor</b>
200	1,000	399	8,299.0	1,855.70	1,157.9	94	37.2	

Assay Class: High Sensitivity DNA Assay  
 Data Path: C:\...ents and Settings\Bioanalyzer\2013-11-27\2013-11-27\_001.xad

Created: 11/27/2013 12:16:51 PM  
 Modified: 11/27/2013 1:04:09 PM

**Electropherogram Summary Continued ...**



**Overall Results for sample 4 : BG #11 1:10**

Number of peaks found: 17      Corr. Area 1: 1,080.4  
 Noise: 0.3

**Peak table for sample 4 : BG #11 1:10**

Peak	Aligned Migration Time [s]	Size [bp]	Conc. [pg/μl]	Molarity [pmol/l]	Observations
1	43.00	35	125.00	5,411.3	Lower Marker
2	61.18	216	192.13	1,350.2	
3	61.59	220	64.53	444.0	
4	62.32	228	118.44	785.6	
5	63.05	237	89.07	570.3	
6	64.10	248	121.84	743.1	
7	65.70	266	122.56	697.2	
8	66.20	272	199.90	1,113.5	
9	68.70	300	80.01	403.8	
10	69.20	306	104.82	518.4	
11	70.34	320	44.46	210.2	
12	71.16	330	44.60	204.5	
13	72.49	347	86.89	379.7	
14	73.85	364	50.80	211.7	
15	74.86	376	28.29	114.0	
16	75.99	390	33.15	128.8	
17	76.82	400	93.06	352.5	
18	79.91	454	21.12	70.5	
19	113.00	10,380	75.00	10.9	Upper Marker

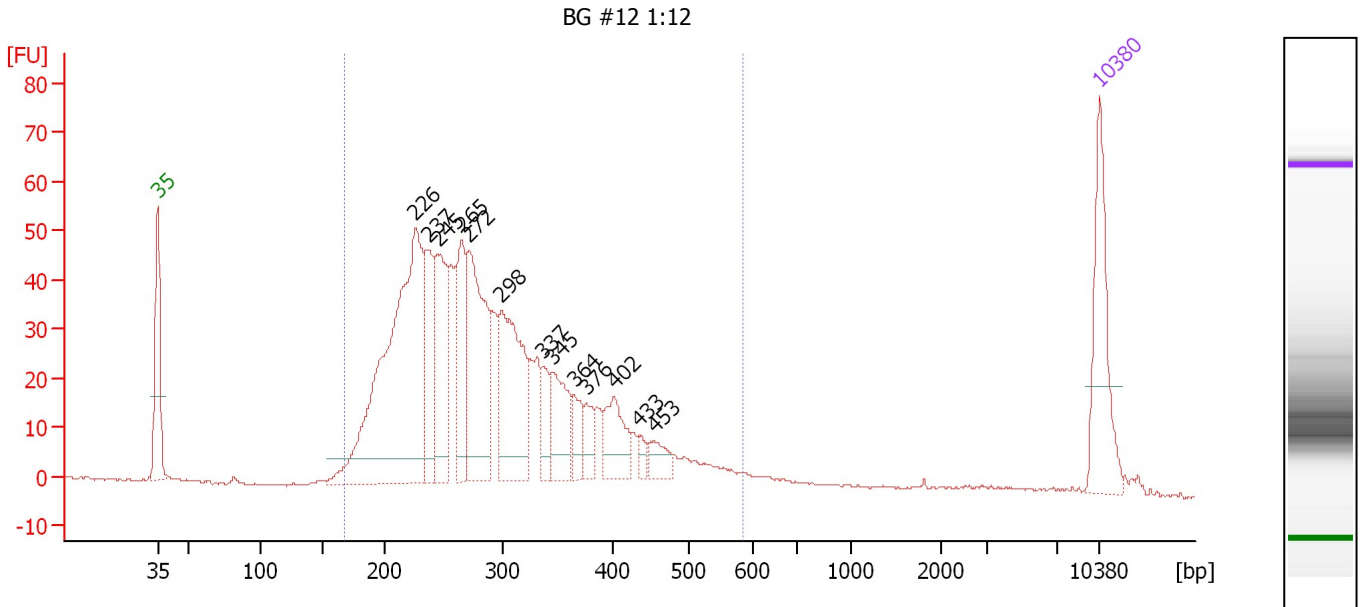
**Region table for sample 4 : BG #11 1:10**

From [bp]	To [bp]	Average Size [bp]	Molarity [pmol/l]	Conc. [pg/μl]	Corr. Area	% of Total	Size distribution in CV [%]	Color
175	640	321	10,215.2	1,950.56	1,080.4	95	28.8	Blue

Assay Class: High Sensitivity DNA Assay  
 Data Path: C:\...ents and Settings\Bioanalyzer\2013-11-27\2013-11-27\_001.xad

Created: 11/27/2013 12:16:51 PM  
 Modified: 11/27/2013 1:04:09 PM

**Electropherogram Summary Continued ...**



**Overall Results for sample 5 : BG #12 1:12**

Number of peaks found: 13                      Corr. Area 1: 1,009.3  
 Noise: 0.3

**Peak table for sample 5 : BG #12 1:12**

Peak	Aligned Migration Time [s]	Size [bp]	Conc. [pg/μl]	Molarity [pmol/l]	Observations
1	43.00	35	125.00	5,411.3	Lower Marker
2	62.15	226	443.73	2,968.6	
3	63.07	237	80.15	512.7	
4	63.81	245	119.80	740.4	
5	65.61	265	90.33	515.7	
6	66.16	272	180.96	1,009.4	
7	68.52	298	154.16	783.6	
8	71.66	337	30.32	136.5	
9	72.35	345	61.65	270.7	
10	73.92	364	24.91	103.6	
11	74.89	376	22.26	89.6	
12	76.92	402	48.72	183.8	
13	78.72	433	9.29	32.5	
14	79.87	453	19.95	66.7	
15	113.00	10,380	75.00	10.9	Upper Marker

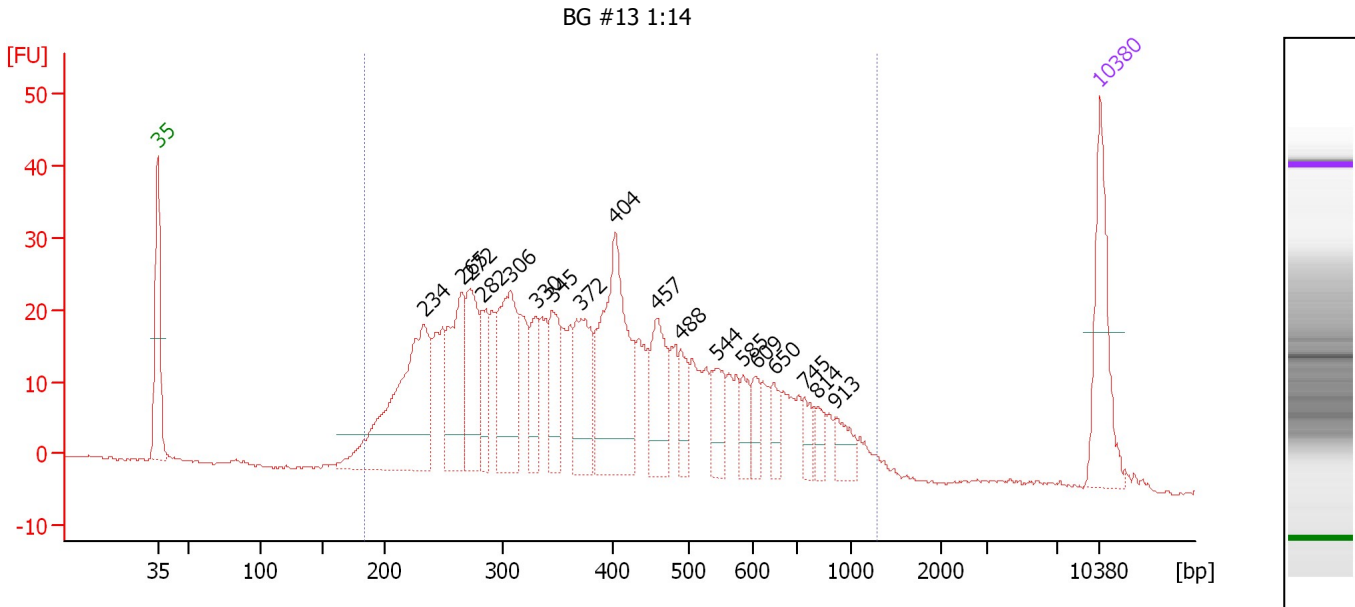
**Region table for sample 5 : BG #12 1:12**

From [bp]	To [bp]	Average Size [bp]	Molarity [pmol/l]	Conc. [pg/μl]	Corr. Area	% of Total	Size distribution in CV [%]	Color
167	586	296	8,842.3	1,580.44	1,009.3	95	27.5	Blue

Assay Class: High Sensitivity DNA Assay  
 Data Path: C:\...ents and Settings\Bioanalyzer\2013-11-27\2013-11-27\_001.xad

Created: 11/27/2013 12:16:51 PM  
 Modified: 11/27/2013 1:04:09 PM

**Electropherogram Summary Continued ...**



**Overall Results for sample 6 : BG #13 1:14**

Number of peaks found: 18                      Corr. Area 1: 851.3  
 Noise: 0.2

**Peak table for sample 6 : BG #13 1:14**

Peak	Aligned Migration Time [s]	Size [bp]	Conc. [pg/μl]	Molarity [pmol/l]	Observations
1	43.00	35	125.00	5,411.3	Lower Marker
2	62.81	234	249.63	1,617.3	
3	65.60	265	113.85	650.2	
4	66.21	272	92.07	512.6	
5	67.09	282	50.66	272.1	
6	69.19	306	126.22	624.5	
7	71.10	330	45.96	211.2	
8	72.31	345	63.73	280.2	
9	74.50	372	90.34	368.4	
10	77.02	404	187.15	702.6	
11	80.10	457	73.75	244.3	
12	81.87	488	30.77	95.5	
13	84.57	544	36.38	101.3	
14	86.48	585	23.31	60.4	
15	87.46	609	20.26	50.4	
16	88.81	650	17.63	41.1	
17	91.05	745	18.56	37.8	
18	91.98	814	15.36	28.6	
19	93.33	913	24.61	40.8	
20	113.00	10,380	75.00	10.9	Upper Marker

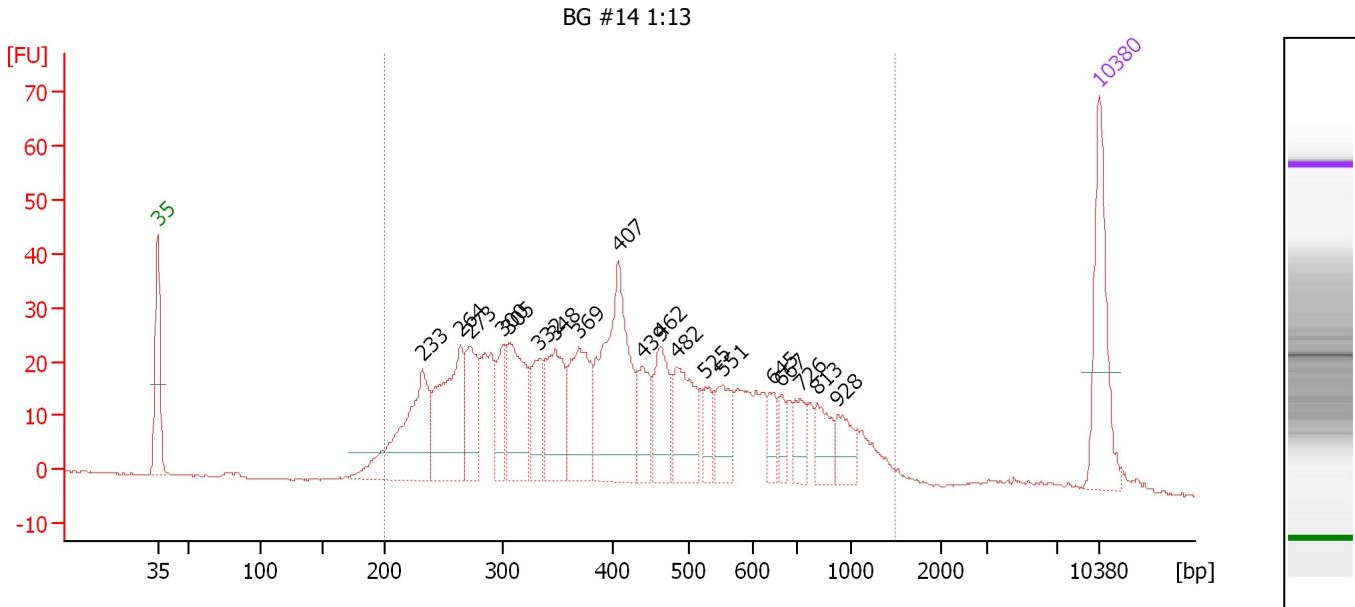
**Region table for sample 6 : BG #13 1:14**

From [bp]	To [bp]	Average Size [bp]	Molarity [pmol/l]	Conc. [pg/μl]	Corr. Area	% of Total	Size distribution in CV [%]	Color
184	1,291	426	8,022.5	1,815.43	851.3	97	44.2	Blue

Assay Class: High Sensitivity DNA Assay  
 Data Path: C:\...ents and Settings\Bioanalyzer\2013-11-27\2013-11-27\_001.xad

Created: 11/27/2013 12:16:51 PM  
 Modified: 11/27/2013 1:04:09 PM

**Electropherogram Summary Continued ...**



**Overall Results for sample 7 : BG #14 1:13**

Number of peaks found: 19                      Corr. Area 1: 932.0  
 Noise: 0.1

**Peak table for sample 7 : BG #14 1:13**

Peak	Aligned Migration Time [s]	Size [bp]	Conc. [pg/μl]	Molarity [pmol/l]	Observations
1	43.00	35	125.00	5,411.3	Lower Marker
2	62.70	233	149.34	972.4	
3	65.50	264	136.57	783.4	
4	66.25	273	70.62	392.5	
5	68.67	300	43.19	218.2	
6	69.10	305	97.99	486.7	
7	71.32	332	49.77	226.8	
8	72.55	348	84.07	366.5	
9	74.26	369	95.28	391.7	
10	77.24	407	175.87	654.0	
11	79.04	439	45.99	158.8	
12	80.37	462	59.69	195.7	
13	81.50	482	75.73	238.1	
14	83.68	525	23.81	68.7	
15	84.91	551	40.60	111.6	
16	88.66	645	19.05	44.7	
17	89.37	667	15.98	36.3	
18	90.79	726	25.69	53.6	
19	91.97	813	30.00	55.9	
20	93.53	928	28.28	46.2	
21	113.00	10,380	75.00	10.9	Upper Marker

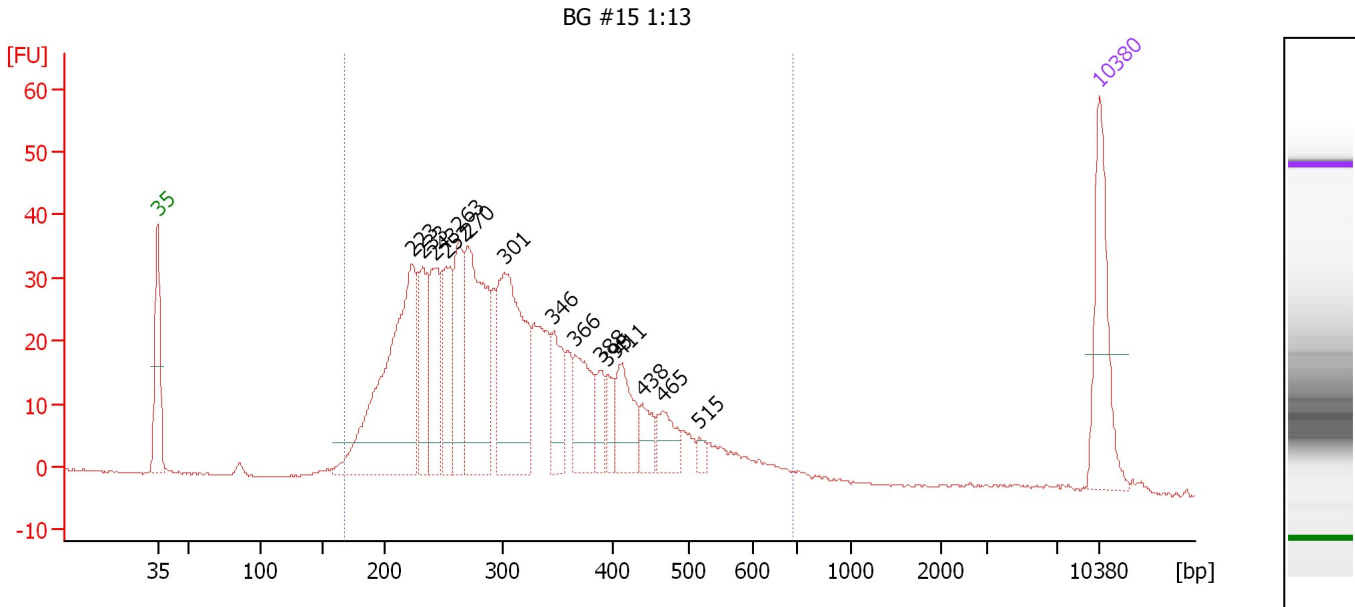
**Region table for sample 7 : BG #14 1:13**

From [bp]	To [bp]	Average Size [bp]	Molarity [pmol/l]	Conc. [pg/μl]	Corr. Area	% of Total	Size distribution in CV [%]	Color
200	1,488	467	6,255.3	1,515.56	932.0	95	48.0	Blue

Assay Class: High Sensitivity DNA Assay  
 Data Path: C:\...ents and Settings\Bioanalyzer\2013-11-27\2013-11-27\_001.xad

Created: 11/27/2013 12:16:51 PM  
 Modified: 11/27/2013 1:04:09 PM

**Electropherogram Summary Continued ...**



**Overall Results for sample 8 : BG #15 1:13**

Number of peaks found: 15                      Corr. Area 1: 846.8  
 Noise: 0.2

**Peak table for sample 8 : BG #15 1:13**

Peak	Aligned Migration Time [s]	Size [bp]	Conc. [pg/μl]	Molarity [pmol/l]	Observations
1	43.00	35	125.00	5,411.3	Lower Marker
2	61.88	223	304.52	2,065.2	
3	62.69	233	71.03	462.7	
4	63.60	243	94.09	587.1	
5	64.42	252	73.45	441.7	
6	65.42	263	92.25	530.9	
7	66.05	270	183.61	1,029.2	
8	68.73	301	201.17	1,014.2	
9	72.42	346	54.87	240.4	
10	74.05	366	65.34	270.5	
11	75.87	388	24.34	95.0	
12	76.39	395	21.29	81.7	
13	77.45	411	54.61	201.3	
14	78.98	438	24.49	84.7	
15	80.52	465	33.01	107.6	
16	83.25	515	7.28	21.4	
17	113.00	10,380	75.00	10.9	Upper Marker

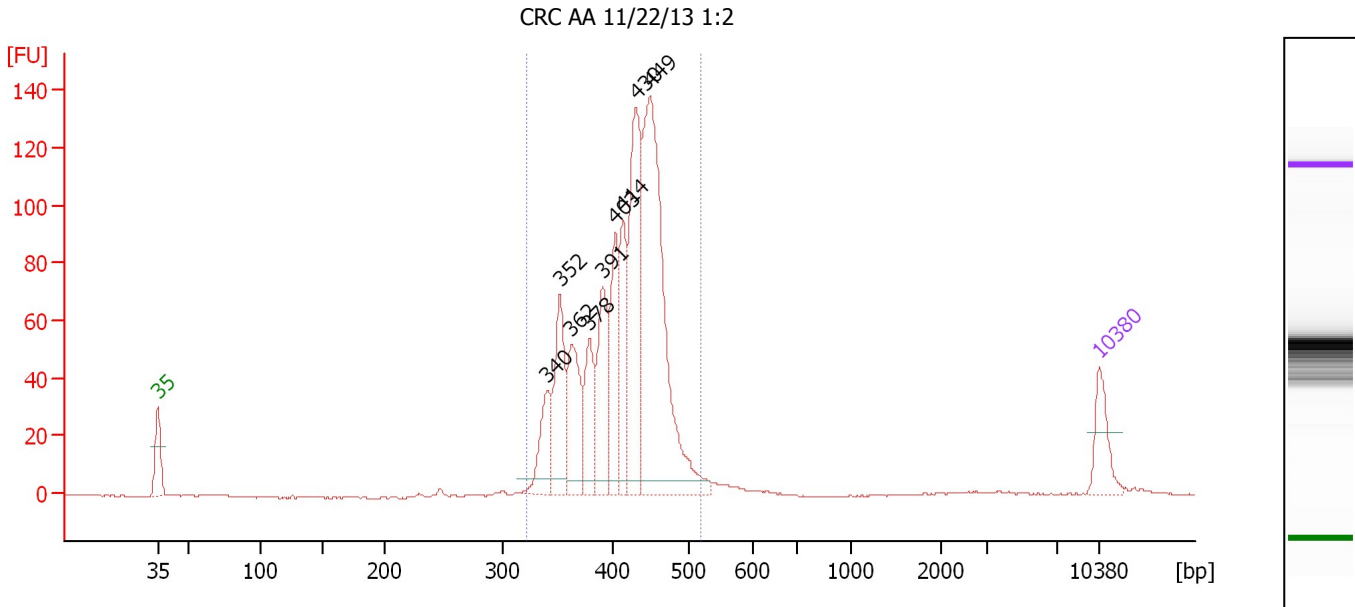
**Region table for sample 8 : BG #15 1:13**

From [bp]	To [bp]	Average Size [bp]	Molarity [pmol/l]	Conc. [pg/μl]	Corr. Area	% of Total	Size distribution in CV [%]	Color
168	690	320	8,653.0	1,630.42	846.8	96	30.7	Blue

Assay Class: High Sensitivity DNA Assay  
 Data Path: C:\...ents and Settings\Bioanalyzer\2013-11-27\2013-11-27\_001.xad

Created: 11/27/2013 12:16:51 PM  
 Modified: 11/27/2013 1:04:09 PM

**Electropherogram Summary Continued ...**



**Overall Results for sample 9 : CRC AA 11/22/13 1:2**

Number of peaks found: 9                      Corr. Area 1: 971.2  
 Noise: 0.2

**Peak table for sample 9 : CRC AA 11/22/13 1:2**

Peak	Aligned Migration Time [s]	Size [bp]	Conc. [pg/μl]	Molarity [pmol/l]	Observations
1	43.00	35	125.00	5,411.3	Lower Marker
2	71.97	340	131.59	585.8	
3	72.88	352	219.03	943.8	
4	73.75	362	192.33	804.3	
5	75.06	378	157.83	632.1	
6	76.07	391	202.93	786.8	
7	76.99	403	204.92	770.5	
8	77.61	414	184.77	676.3	
9	78.53	430	412.15	1,452.3	
10	79.59	449	825.36	2,787.9	
11	113.00	10,380	75.00	10.9	Upper Marker

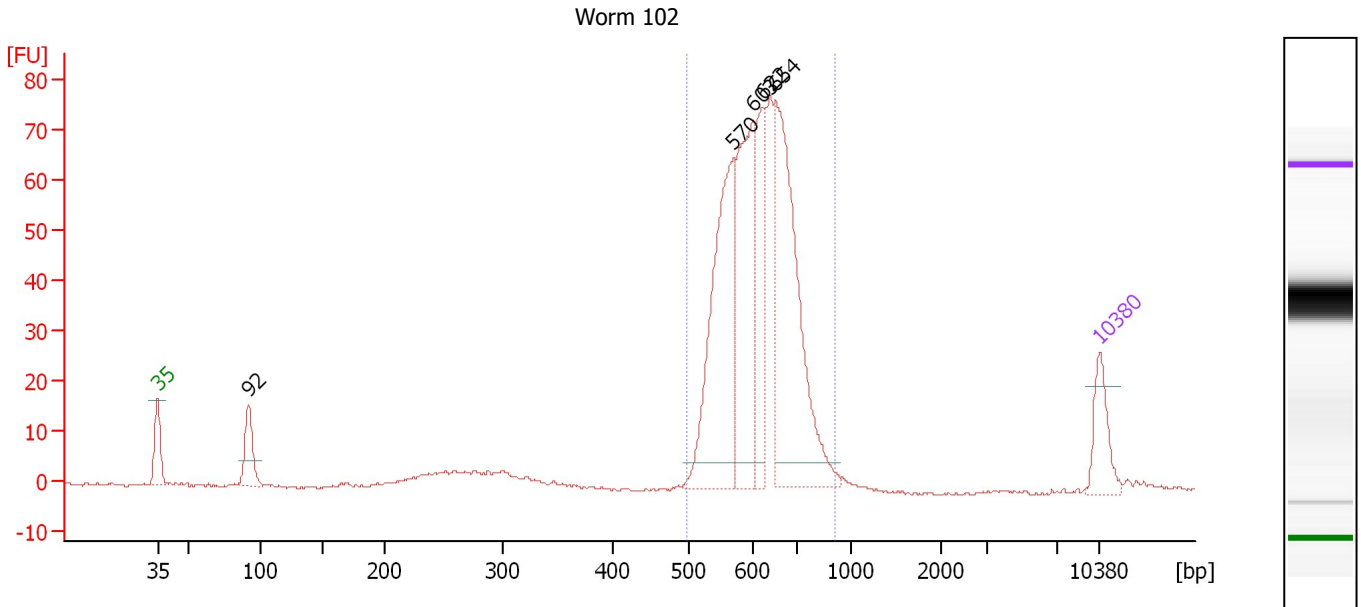
**Region table for sample 9 : CRC AA 11/22/13 1:2**

From [bp]	To [bp]	Average Size [bp]	Molarity [pmol/l]	Conc. [pg/μl]	Corr. Area	% of Total	Size distribution in CV [%]	Color
322	517	414	9,389.0	2,537.04	971.2	93	9.9	Blue

Assay Class: High Sensitivity DNA Assay  
 Data Path: C:\...ents and Settings\Bioanalyzer\2013-11-27\2013-11-27\_001.xad

Created: 11/27/2013 12:16:51 PM  
 Modified: 11/27/2013 1:04:09 PM

**Electropherogram Summary Continued ...**



**Overall Results for sample 10 : Worm 102**

Number of peaks found: 5                      Corr. Area 1: 560.7  
 Noise: 0.3

**Peak table for sample 10 : Worm 102**

Peak	Aligned Migration Time [s]	Size [bp]	Conc. [pg/μl]	Molarity [pmol/l]	Observations
1	43.00	35	125.00	5,411.3	Lower Marker
2	49.77	92	111.75	1,842.8	
3	85.78	570	471.16	1,252.6	
4	87.28	603	382.09	959.9	
5	87.91	622	172.20	419.2	
6	88.93	654	567.95	1,316.8	
7	113.00	10,380	75.00	10.9	Upper Marker

**Region table for sample 10 : Worm 102**

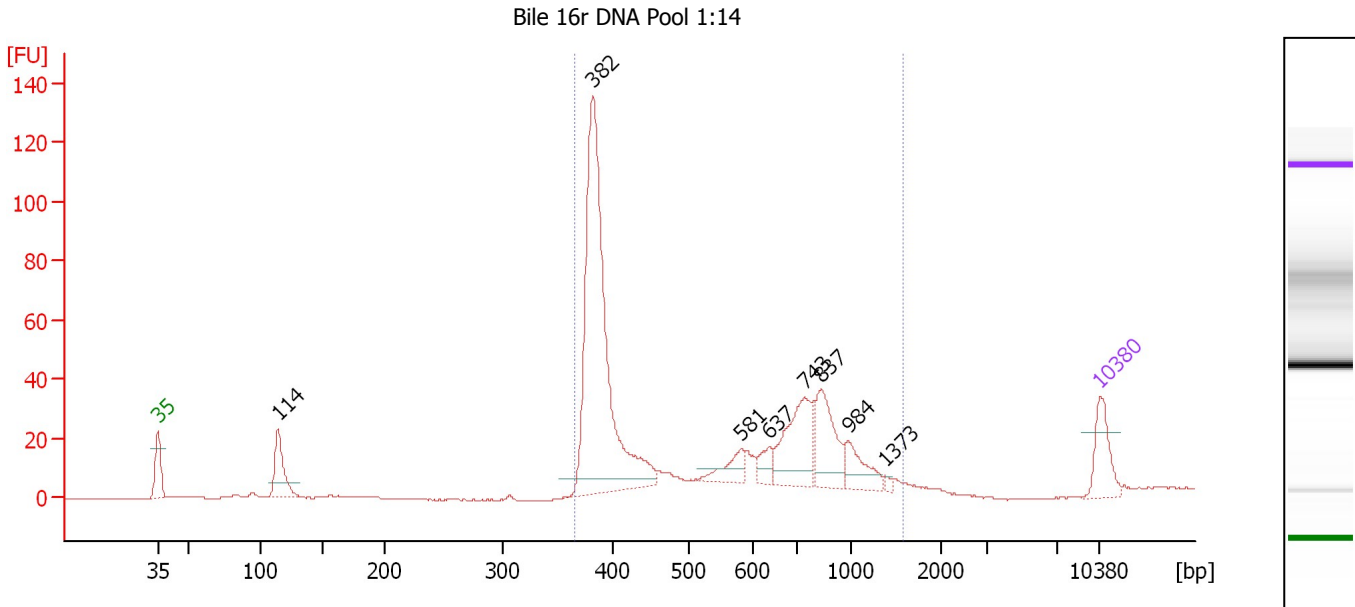
From [bp]	To [bp]	Average Size [bp]	Molarity [pmol/l]	Conc. [pg/μl]	Corr. Area	% of Total	Size distribution in CV [%]	Color
496	910	623	4,619.5	1,876.04	560.7	86	11.0	Blue



Assay Class: High Sensitivity DNA Assay  
 Data Path: C:\...ents and Settings\Bioanalyzer\2013-11-27\2013-11-27\_001.xad

Created: 11/27/2013 12:16:51 PM  
 Modified: 11/27/2013 1:04:09 PM

**Electropherogram Summary Continued ...**



**Overall Results for sample 11 : Bile 16r DNA Pool 1:14**

Number of peaks found: 8                      Corr. Area 1: 605.4  
 Noise: 0.1

**Peak table for sample 11 : Bile 16r DNA Pool 1:14**

Peak	Aligned Migration Time [s]	Size [bp]	Conc. [pg/μl]	Molarity [pmol/l]	Observations
1	43.00	35	125.00	5,411.3	Lower Marker
2	51.94	114	134.52	1,787.1	
3	75.33	382	903.98	3,588.6	
4	86.31	581	54.62	142.4	
5	88.40	637	38.19	90.8	
6	91.03	743	192.04	391.5	
7	92.29	837	153.16	277.4	
8	94.28	984	75.24	115.9	
9	97.01	1,373	7.40	8.2	
10	113.00	10,380	75.00	10.9	Upper Marker

**Region table for sample 11 : Bile 16r DNA Pool 1:14**

From [bp]	To [bp]	Average Size [bp]	Molarity [pmol/l]	Conc. [pg/μl]	Corr. Area	% of Total	Size distribution in CV [%]	Color
364	1,566	592	5,281.1	1,712.15	605.4	91	42.3	Blue

Assay Class: High Sensitivity DNA Assay  
Data Path: C:\...ents and Settings\Bioanalyzer\2013-11-27\2013-11-27\_001.xad

Created: 11/27/2013 12:16:51 PM  
Modified: 11/27/2013 1:04:09 PM

**Gel Image**

