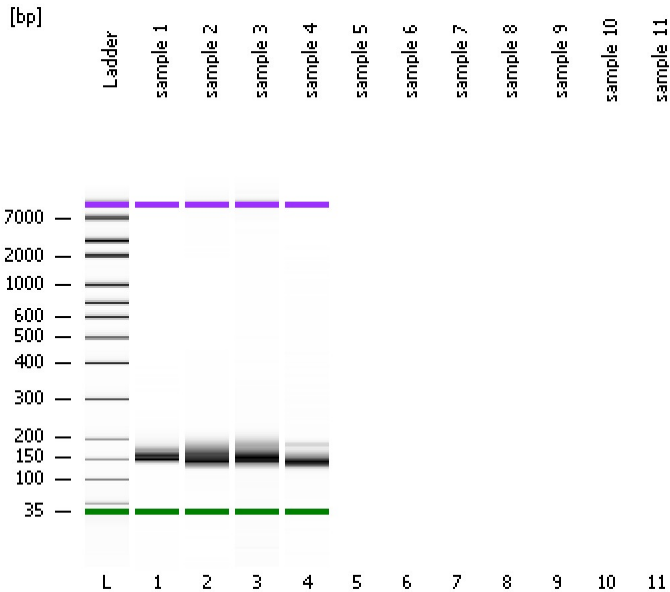


Assay Class: High Sensitivity DNA Assay
Data Path: C:\...ents and Settings\Bioanalyzer\2013-12-02\2013-12-02_002.xad

Created: 12/2/2013 11:12:08 AM
Modified: 12/2/2013 11:41:02 AM

Electrophoresis File Run Summary



Instrument Information:

Instrument Name: DE13701086 Firmware: C.01.069
Serial#: DE13701086 Type: G2938B

Assay Information:

Assay Origin Path: C:\Program Files\Agilent\2100 bioanalyzer\2100 expert\assays\dsDNA\High Sensitivity DNA.xsy
Assay Class: High Sensitivity DNA Assay
Version: 1.03
Assay Comments: Copyright © 2003-2010 Agilent Technologies

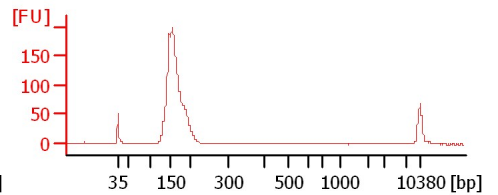
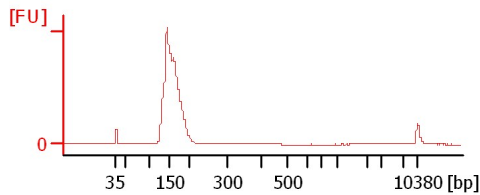
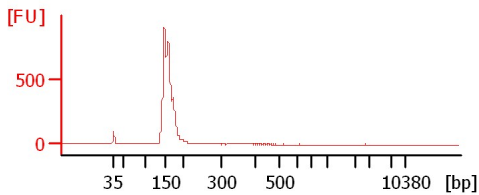
Chip Information:

Chip Lot #:
Reagent Kit Lot #:
Chip Comments:

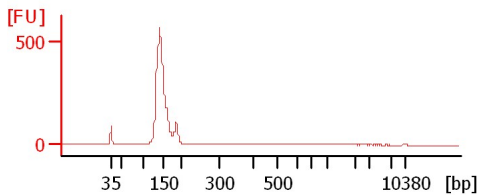
sample 1

sample 2

sample 3



sample 4



Assay Class: High Sensitivity DNA Assay
 Data Path: C:\...ents and Settings\Bioanalyzer\2013-12-02\2013-12-02_002.xad

Created: 12/2/2013 11:12:08 AM
 Modified: 12/2/2013 11:41:02 AM

Electrophoresis File Run Summary (Chip Summary)

Sample Name	Sample Comment	Rest. Digest	Status	Observation	Result Label	Result Color
sample 1		<input type="checkbox"/>	✓			
sample 2		<input type="checkbox"/>	✓			
sample 3		<input type="checkbox"/>	✓			
sample 4		<input type="checkbox"/>	✓			
sample 5		<input type="checkbox"/>				
sample 6		<input type="checkbox"/>				
sample 7		<input type="checkbox"/>				
sample 8		<input type="checkbox"/>				
sample 9		<input type="checkbox"/>				
sample 10		<input type="checkbox"/>				
sample 11		<input type="checkbox"/>				
Ladder		<input type="checkbox"/>	✓			

Chip Lot #

Reagent Kit Lot #

Chip Comments :

Assay Class: High Sensitivity DNA Assay
 Data Path: C:\...ents and Settings\Bioanalyzer\2013-12-02\2013-12-02_002.xad

Created: 12/2/2013 11:12:08 AM
 Modified: 12/2/2013 11:41:02 AM

Electrophoresis Assay Details

General Analysis Settings

Number of Available Sample and Ladder Wells (Max.) : 12
 Minimum Visible Range [s] : 32
 Maximum Visible Range [s] : 138
 Start Analysis Time Range [s] : 33
 End Analysis Time Range [s] : 137.5
 Ladder Concentration [pg/μl] : 1950
 Uses Standard Area for Ladder Fragments
 Lower Marker Concentration [pg/μl] : 125
 Upper Marker Concentration [pg/μl] : 75
 Used Upper Marker for Quantitation
 Standard Curve Fit is Point to Point
 Show Data Aligned to Lower and Upper Marker

Integrator Settings

Integration Start Time [s] : 33.05
 Integration End Time [s] : 137
 Slope Threshold : 0.8
 Height Threshold [FU] : 5
 Area Threshold : 0.1
 Width Threshold [s] : 0.6
 Baseline Plateau [s] : 0.5

Filter Settings

Filter Width [s] : 0.5
 Polynomial Order : 4

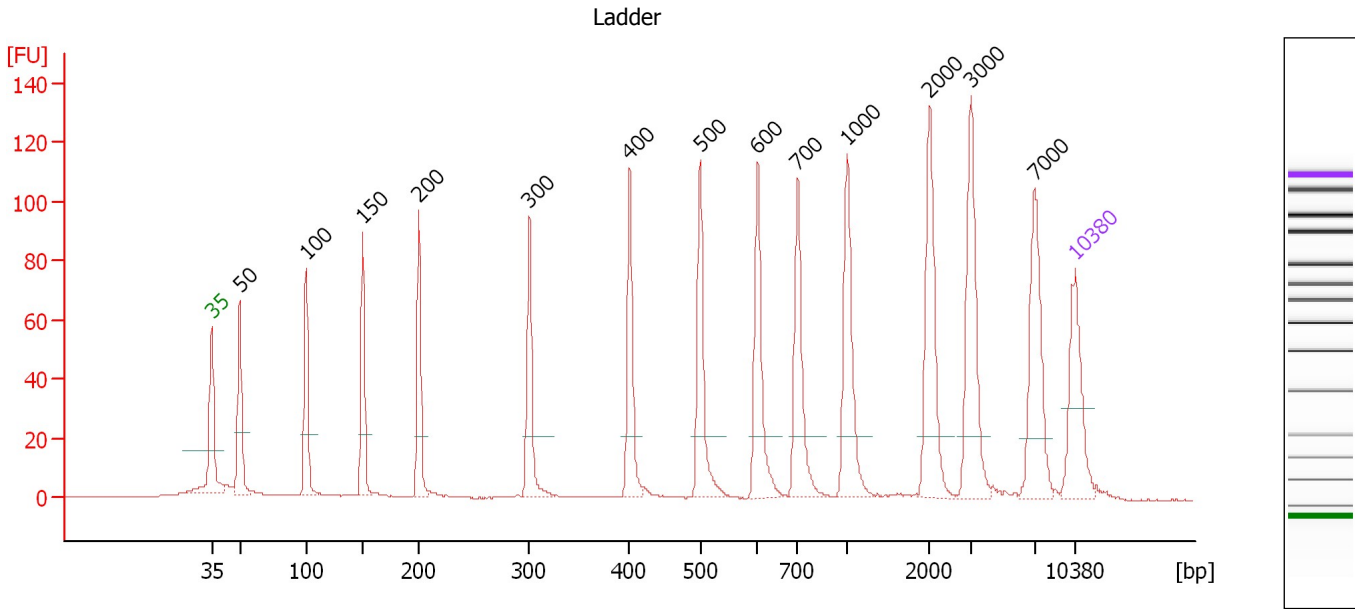
Ladder

Ladder Peak	Size	Area
1	35	160
2	50	210
3	100	208
4	150	221
5	200	242
6	300	270
7	400	305
8	500	306
9	600	336
10	700	321
11	1000	366
12	2000	413
13	3000	411
14	7000	400
15	10380	214

Assay Class: High Sensitivity DNA Assay
 Data Path: C:\...ents and Settings\Bioanalyzer\2013-12-02\2013-12-02_002.xad

Created: 12/2/2013 11:12:08 AM
 Modified: 12/2/2013 11:41:02 AM

Electropherogram Summary



Overall Results for Ladder

Noise: 0.1

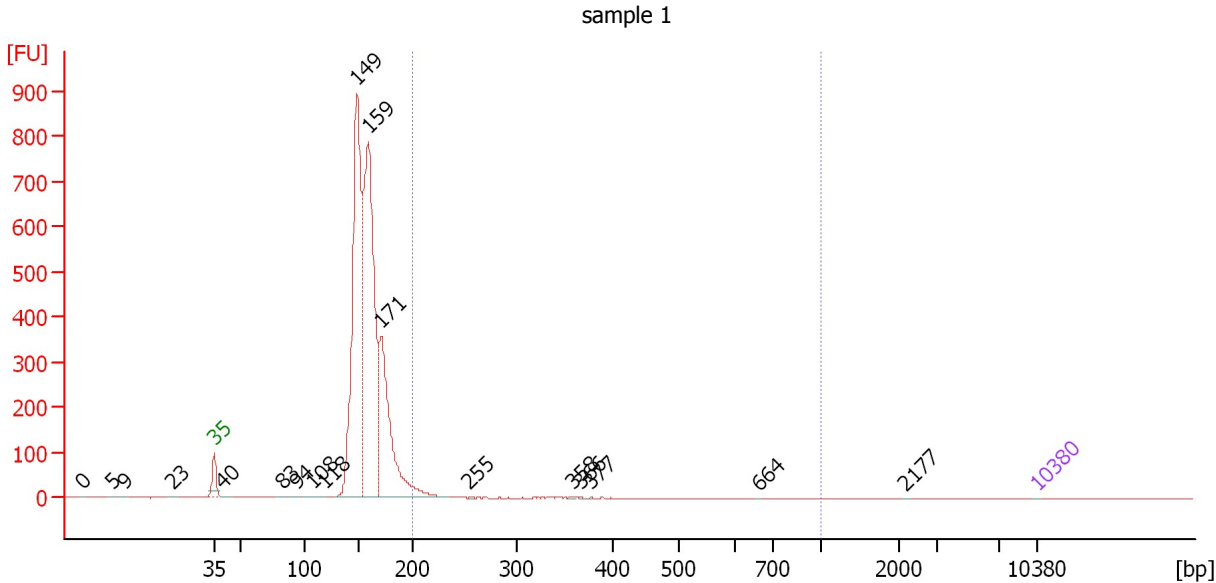
Peak table for Ladder

Peak	Aligned Migration Time [s]	Size [bp]	Conc. [pg/μl]	Molarity [pmol/l]	Observations
1	43.00	35	125.00	5,411.3	Lower Marker
2	45.29	50	150.00	4,545.5	Ladder Peak
3	50.65	100	150.00	2,272.7	Ladder Peak
4	55.27	150	150.00	1,515.2	Ladder Peak
5	59.81	200	150.00	1,136.4	Ladder Peak
6	68.75	300	150.00	757.6	Ladder Peak
7	76.88	400	150.00	568.2	Ladder Peak
8	82.58	500	150.00	454.5	Ladder Peak
9	87.25	600	150.00	378.8	Ladder Peak
10	90.49	700	150.00	324.7	Ladder Peak
11	94.51	1,000	150.00	227.3	Ladder Peak
12	101.16	2,000	150.00	113.6	Ladder Peak
13	104.53	3,000	150.00	75.8	Ladder Peak
14	109.67	7,000	150.00	32.5	Ladder Peak
15	113.00	10,380	75.00	10.9	Upper Marker

Assay Class: High Sensitivity DNA Assay
 Data Path: C:\...ents and Settings\Bioanalyzer\2013-12-02\2013-12-02_002.xad

Created: 12/2/2013 11:12:08 AM
 Modified: 12/2/2013 11:41:02 AM

Electropherogram Summary Continued ...



Setpoint Deviations for sample 1 : sample 1

Height Threshold [FU] : 0.01

Overall Results for sample 1 : sample 1

Number of peaks found: 18 Corr. Area 1: 67.5
 Noise: 0.2

Peak table for sample 1 : sample 1

Peak	Aligned Migration Time [s]	Size [bp]	Conc. [pg/μl]	Molarity [pmol/l]	Observations
1	31.85	0	0.00	0.0	
2	34.30	5	0.00	0.0	
3	35.43	9	0.00	0.0	
4	39.51	23	0.00	0.0	
5	43.00	35	125.00	5,411.3	Lower Marker
6	43.73	40	7,023.88	267,721.2	
7	48.80	83	2,124.17	38,878.3	
8	50.03	94	2,231.99	35,898.0	
9	51.34	108	9,167.78	129,210.6	
10	52.34	118	4,738.98	60,700.7	
11	55.15	149	2,635,576.00	26,856,918.0	
12	56.10	159	2,586,389.00	24,622,340.0	
13	57.19	171	1,252,748.88	11,090,541.0	
14	64.72	255	428.44	2,547.0	
15	73.47	358	1,297.60	5,491.5	
16	74.15	366	666.31	2,755.4	
17	75.01	377	436.56	1,754.5	
18	89.33	664	162.75	371.1	
19	101.76	2,177	233.46	162.5	
20	113.00	10,380	75.00	10.9	Upper Marker

Assay Class: High Sensitivity DNA Assay
Data Path: C:\...ents and Settings\Bioanalyzer\2013-12-02\2013-12-02_002.xad

Created: 12/2/2013 11:12:08 AM
Modified: 12/2/2013 11:41:02 AM

Electropherogram Summary Continued ...

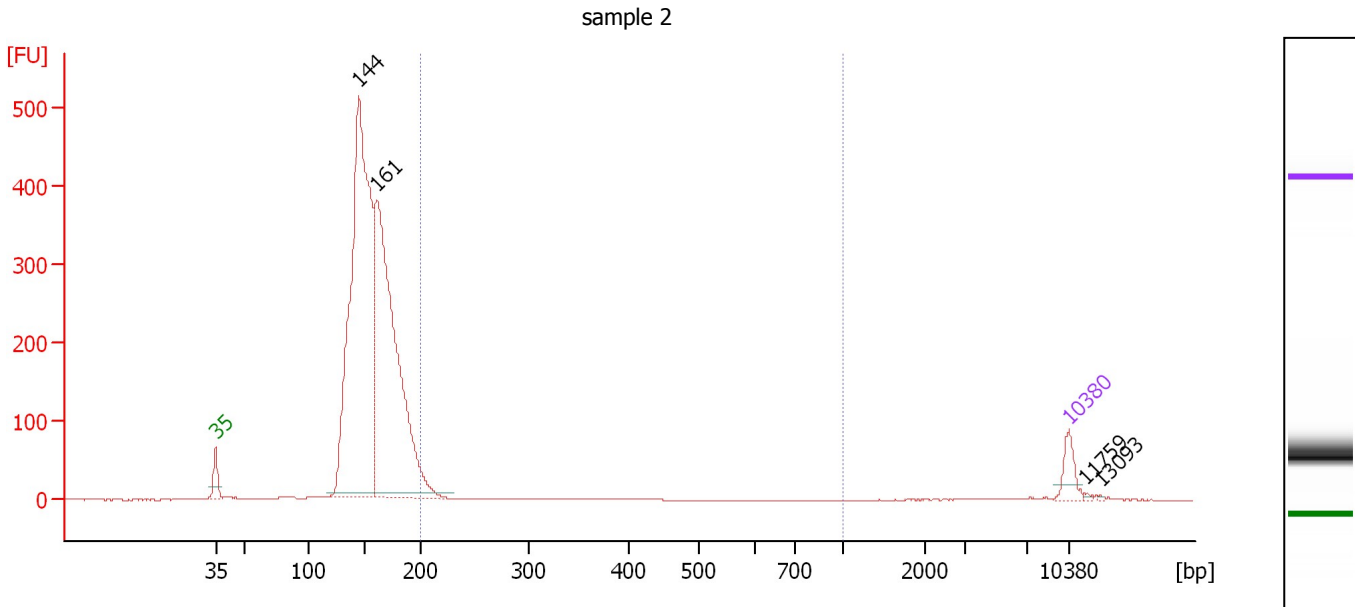
... Region table for sample 1 : sample 1

From [bp]	To [bp]	Average Size [bp]	Molarity [pmol/l]	Conc. [pg/μl]	Corr. Area	% of Total	Size distribution in CV [%]	Color
200	1,000	243	705,533.7	104,850.32	67.5	2	30.9	■

Assay Class: High Sensitivity DNA Assay
 Data Path: C:\...ents and Settings\Bioanalyzer\2013-12-02\2013-12-02_002.xad

Created: 12/2/2013 11:12:08 AM
 Modified: 12/2/2013 11:41:02 AM

Electropherogram Summary Continued ...



Overall Results for sample 2 : sample 2

Number of peaks found: 4 Corr. Area 1: 100.9
 Noise: 0.2

Peak table for sample 2 : sample 2

Peak	Aligned Migration Time [s]	Size [bp]	Conc. [pg/μl]	Molarity [pmol/l]	Observations
1	43.00	35	125.00	5,411.3	Lower Marker
2	54.73	144	3,292.42	34,602.1	
3	56.26	161	2,546.34	23,971.8	
4	113.00	10,380	75.00	10.9	Upper Marker
5	114.36	11,759	0.00	0.0	
6	115.67	13,093	0.00	0.0	

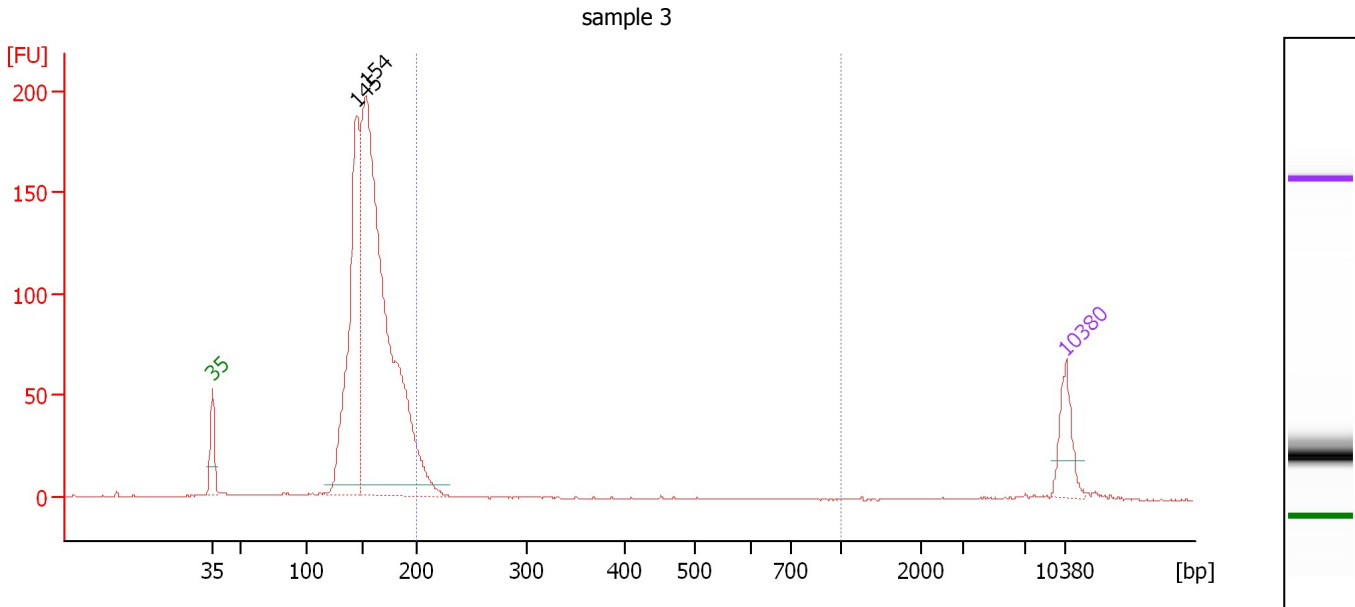
Region table for sample 2 : sample 2

From [bp]	To [bp]	Average Size [bp]	Molarity [pmol/l]	Conc. [pg/μl]	Corr. Area	% of Total	Size distribution in CV [%]	Color
200	1,000	283	948.9	152.99	100.9	3	43.8	Blue

Assay Class: High Sensitivity DNA Assay
 Data Path: C:\...ents and Settings\Bioanalyzer\2013-12-02\2013-12-02_002.xad

Created: 12/2/2013 11:12:08 AM
 Modified: 12/2/2013 11:41:02 AM

Electropherogram Summary Continued ...



Overall Results for sample 3 : sample 3

Number of peaks found: 2 Corr. Area 1: 37.3
 Noise: 0.2

Peak table for sample 3 : sample 3

Peak	Aligned Migration Time [s]	Size [bp]	Conc. [pg/μl]	Molarity [pmol/l]	Observations
1	43.00	35	125.00	5,411.3	Lower Marker
2	54.81	145	798.02	8,336.7	
3	55.60	154	1,903.51	18,774.3	
4	113.00	10,380	75.00	10.9	Upper Marker

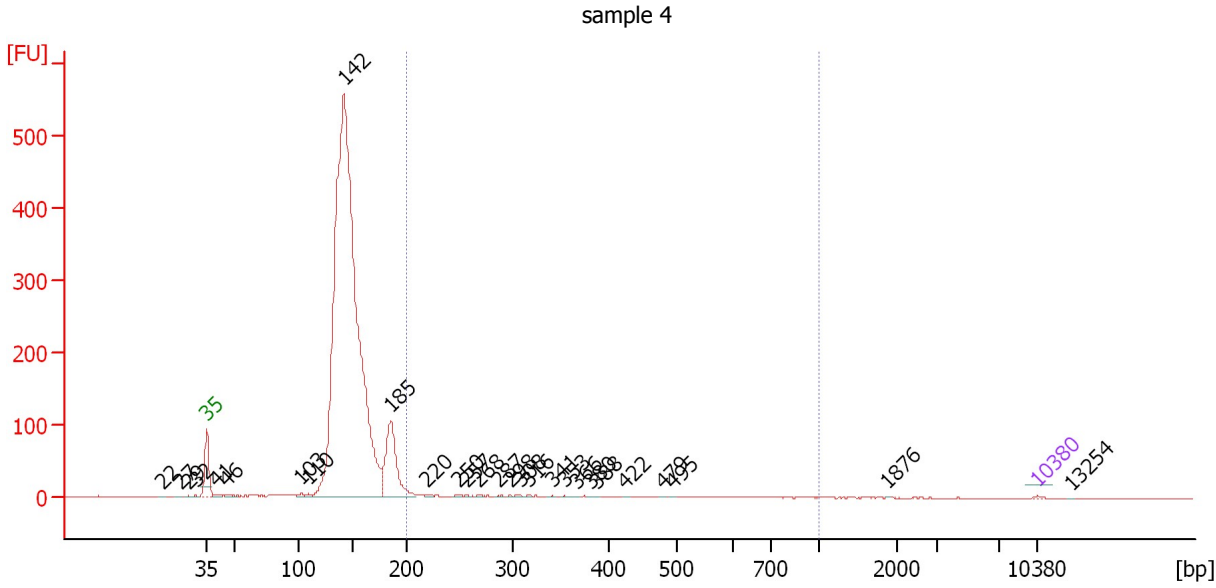
Region table for sample 3 : sample 3

From [bp]	To [bp]	Average Size [bp]	Molarity [pmol/l]	Conc. [pg/μl]	Corr. Area	% of Total	Size distribution in CV [%]	Color
200	1,000	209	514.3	70.48	37.3	3	10.3	Blue

Assay Class: High Sensitivity DNA Assay
 Data Path: C:\...ents and Settings\Bioanalyzer\2013-12-02\2013-12-02_002.xad

Created: 12/2/2013 11:12:08 AM
 Modified: 12/2/2013 11:41:02 AM

Electropherogram Summary Continued ...



Setpoint Deviations for sample 4 : sample 4

Height Threshold [FU] : 0.1

Overall Results for sample 4 : sample 4

Number of peaks found: 28 Corr. Area 1: 96.1
 Noise: 0.2

Peak table for sample 4 : sample 4


Peak	Aligned Migration Time [s]	Size [bp]	Conc. [pg/μl]	Molarity [pmol/l]	Observations
1	39.27	22	0.00	0.0	
2	40.84	27	0.00	0.0	
3	41.38	29	0.00	0.0	
4	42.06	32	0.00	0.0	
5	43.00	35	125.00	5,411.3	Lower Marker
6	43.90	41	335.76	12,443.7	
7	44.71	46	275.54	9,041.3	
8	50.90	103	261.10	3,850.2	
9	51.53	110	239.00	3,305.6	
10	54.54	142	109,886.12	1,171,814.8	
11	58.49	185	9,111.26	74,429.8	
12	61.59	220	115.51	795.9	
13	64.28	250	110.14	667.4	
14	64.91	257	76.73	452.3	
15	65.90	268	105.43	595.8	
16	67.61	287	94.71	499.7	
17	68.55	298	61.32	312.1	
18	69.40	308	109.18	537.1	
19	70.03	316	70.87	340.1	
20	72.10	341	60.71	269.6	
21	73.08	353	40.92	175.5	
22	74.12	366	55.64	230.3	

Assay Class: High Sensitivity DNA Assay
 Data Path: C:\...ents and Settings\Bioanalyzer\2013-12-02\2013-12-02_002.xad


Created: 12/2/2013 11:12:08 AM
 Modified: 12/2/2013 11:41:02 AM

Electropherogram Summary Continued ...

... Peak table for sample 4 : sample 4

Peak	Aligned Migration Time [s]	Size [bp]	Conc. [pg/ μ l]	Molarity [pmol/l]	Observations
23	75.28	380	33.63	134.0	
24	75.91	388	28.54	111.4	
25	78.16	422	25.43	91.2	
26	81.39	479	8.73	27.6	
27	82.29	495	6.39	19.5	
28	100.34	1,876	10.92	8.8	
29	 113.00	10,380	75.00	10.9	Upper Marker
30	115.83	13,254	0.00	0.0	

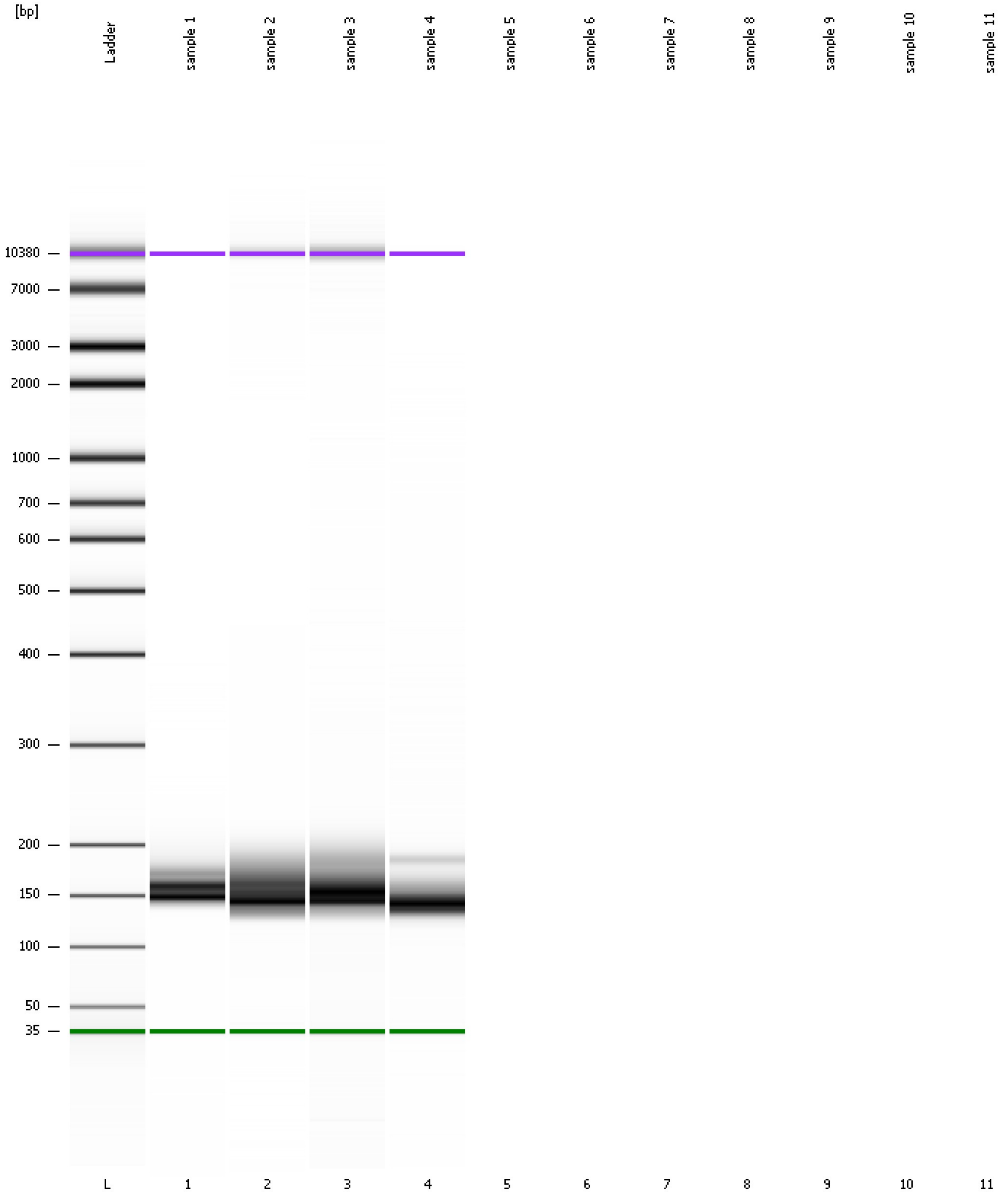
Region table for sample 4 : sample 4

From [bp]	To [bp]	Average Size [bp]	Molarity [pmol/l]	Conc. [pg/ μ l]	Corr. Area	% of Total	Size distribution in CV [%]	Color
200	1,000	399	17,251.8	3,597.14	96.1	4	45.2	

Assay Class: High Sensitivity DNA Assay
Data Path: C:\...ents and Settings\Bioanalyzer\2013-12-02\2013-12-02_002.xad

Created: 12/2/2013 11:12:08 AM
Modified: 12/2/2013 11:41:02 AM

Gel Image



Assay Class: High Sensitivity DNA Assay
Data Path: C:\...ents and Settings\Bioanalyzer\2013-12-02\2013-12-02_002.xad

Created: 12/2/2013 11:12:08 AM
Modified: 12/2/2013 11:41:02 AM

Invalid Samples

Sample 5 has not been run, no results available.

Sample 6 has not been run, no results available.

Sample 7 has not been run, no results available.

Sample 8 has not been run, no results available.

Sample 9 has not been run, no results available.

Sample 10 has not been run, no results available.

Sample 11 has not been run, no results available.