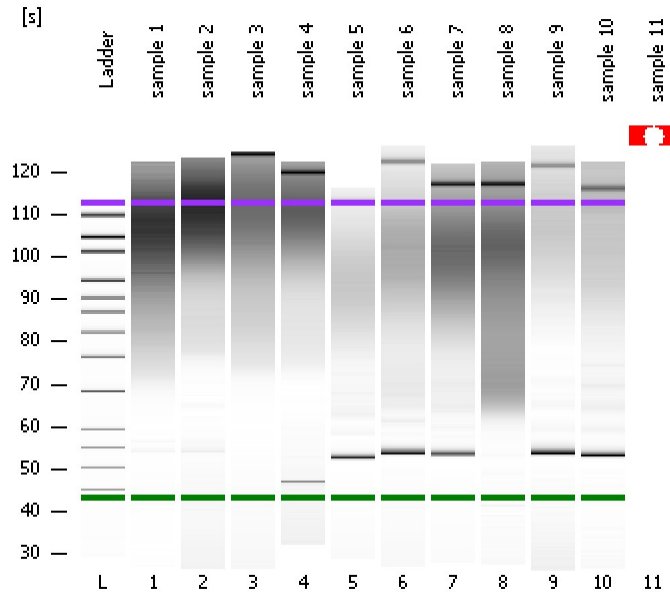


Assay Class: High Sensitivity DNA Assay
Data Path: C:\...ents and Settings\Bioanalyzer\2013-12-04\2013-12-04_002.xad

Created: 12/4/2013 11:29:13 AM
Modified: 12/4/2013 12:20:41 PM

Electrophoresis File Run Summary



Instrument Information:

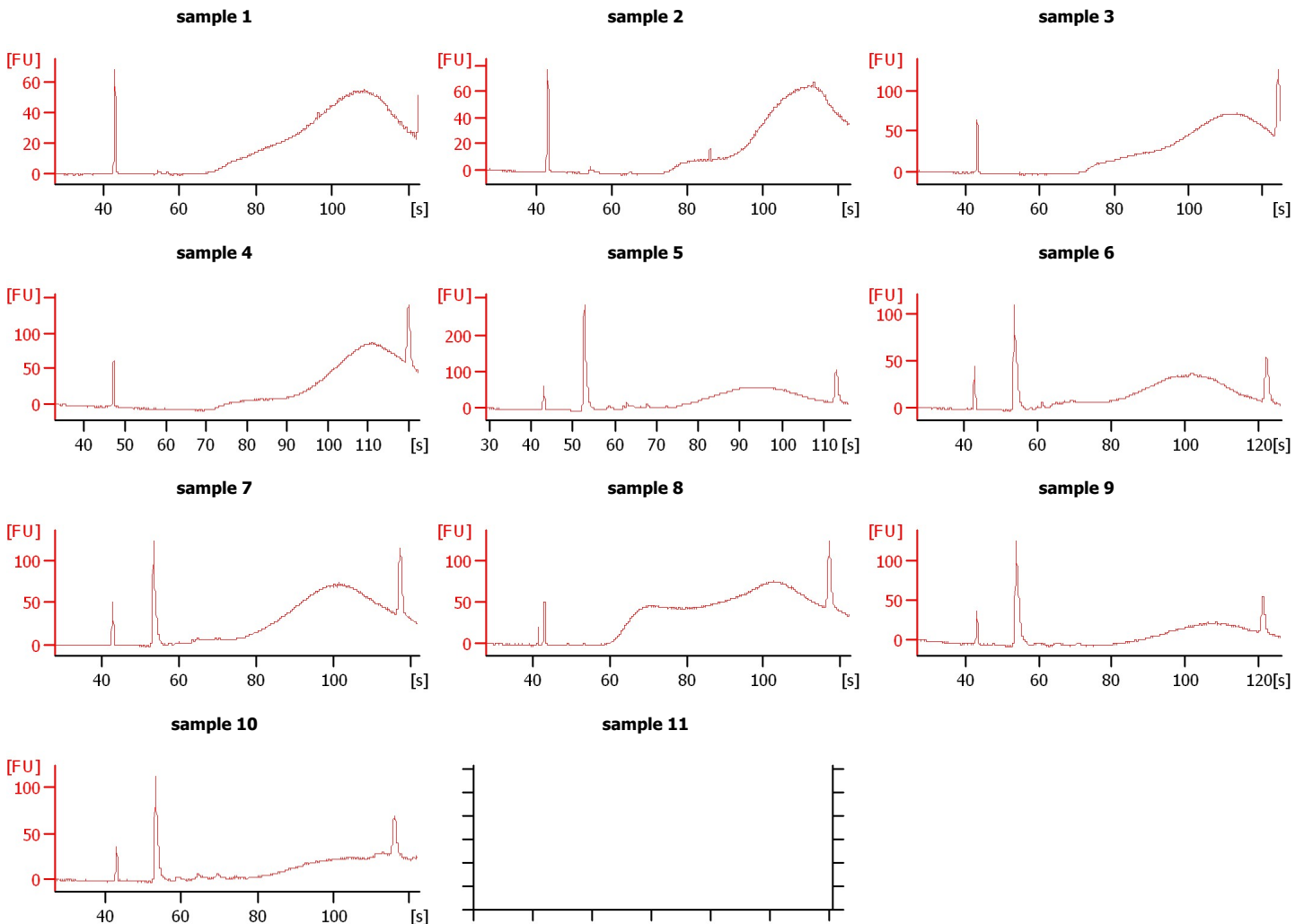
Instrument Name: DE13701086 Firmware: C.01.069
Serial#: DE13701086 Type: G2938B

Assay Information:

Assay Origin Path: C:\Program Files\Agilent\2100 bioanalyzer\2100 expert\assays\dsDNA\High Sensitivity DNA.xsy
Assay Class: High Sensitivity DNA Assay
Version: 1.03
Assay Comments: Copyright © 2003-2010 Agilent Technologies

Chip Information:

Chip Lot #:
Reagent Kit Lot #:
Chip Comments:



Assay Class: High Sensitivity DNA Assay
Data Path: C:\...ents and Settings\Bioanalyzer\2013-12-04\2013-12-04_002.xad

Created: 12/4/2013 11:29:13 AM
Modified: 12/4/2013 12:20:41 PM

Electrophoresis File Run Summary (Chip Summary)

Sample Name	Sample Comment	Rest. Digest	Status	Observation	Result Label	Result Color
sample 1		<input type="checkbox"/>	✓			
sample 2		<input type="checkbox"/>	✓			
sample 3		<input type="checkbox"/>	✓			
sample 4		<input type="checkbox"/>	✓			
sample 5		<input type="checkbox"/>	✓			
sample 6		<input type="checkbox"/>	✓			
sample 7		<input type="checkbox"/>	✓			
sample 8		<input type="checkbox"/>	✓			
sample 9		<input type="checkbox"/>	✓			
sample 10		<input type="checkbox"/>	✓			
sample 11		<input type="checkbox"/>	✗			
Ladder		<input type="checkbox"/>	✓			

Chip Lot #

Reagent Kit Lot #

Chip Comments :

Assay Class: High Sensitivity DNA Assay
Data Path: C:\...ents and Settings\Bioanalyzer\2013-12-04\2013-12-04_002.xad

Created: 12/4/2013 11:29:13 AM
Modified: 12/4/2013 12:20:41 PM

Electrophoresis Assay Details

General Analysis Settings

Number of Available Sample and Ladder Wells (Max.) : 12
Minimum Visible Range [s] : 32
Maximum Visible Range [s] : 138
Start Analysis Time Range [s] : 33
End Analysis Time Range [s] : 137.5
Ladder Concentration [pg/μl] : 1950
Uses Standard Area for Ladder Fragments
Lower Marker Concentration [pg/μl] : 125
Upper Marker Concentration [pg/μl] : 75
Used Upper Marker for Quantitation
Standard Curve Fit is Point to Point
Show Data Aligned to Lower and Upper Marker

Integrator Settings

Integration Start Time [s] : 33.05
Integration End Time [s] : 137
Slope Threshold : 0.8
Height Threshold [FU] : 5
Area Threshold : 0.1
Width Threshold [s] : 0.6
Baseline Plateau [s] : 0.5

Filter Settings

Filter Width [s] : 0.5
Polynomial Order : 4

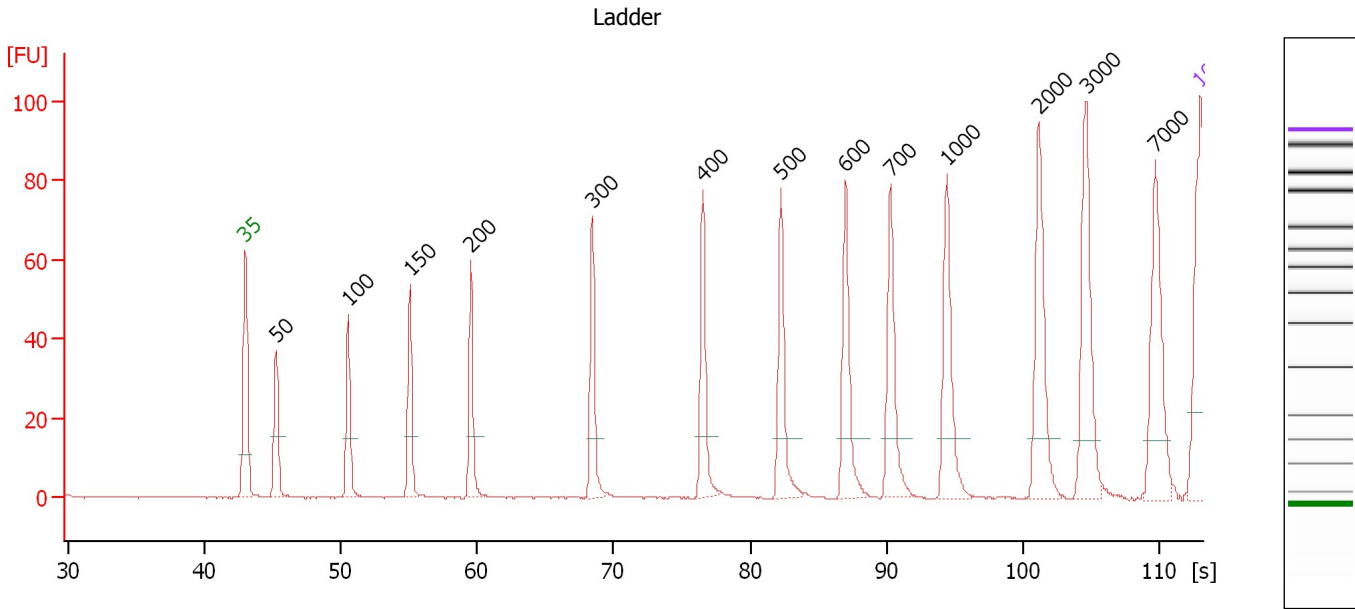
Ladder

Ladder Peak	Size	Area
1	35	160
2	50	210
3	100	208
4	150	221
5	200	242
6	300	270
7	400	305
8	500	306
9	600	336
10	700	321
11	1000	366
12	2000	413
13	3000	411
14	7000	400
15	10380	214

Assay Class: High Sensitivity DNA Assay
 Data Path: C:\...ents and Settings\Bioanalyzer\2013-12-04\2013-12-04_002.xad

Created: 12/4/2013 11:29:13 AM
 Modified: 12/4/2013 12:20:41 PM

Electropherogram Summary



Overall Results for Ladder

Noise: 0.1

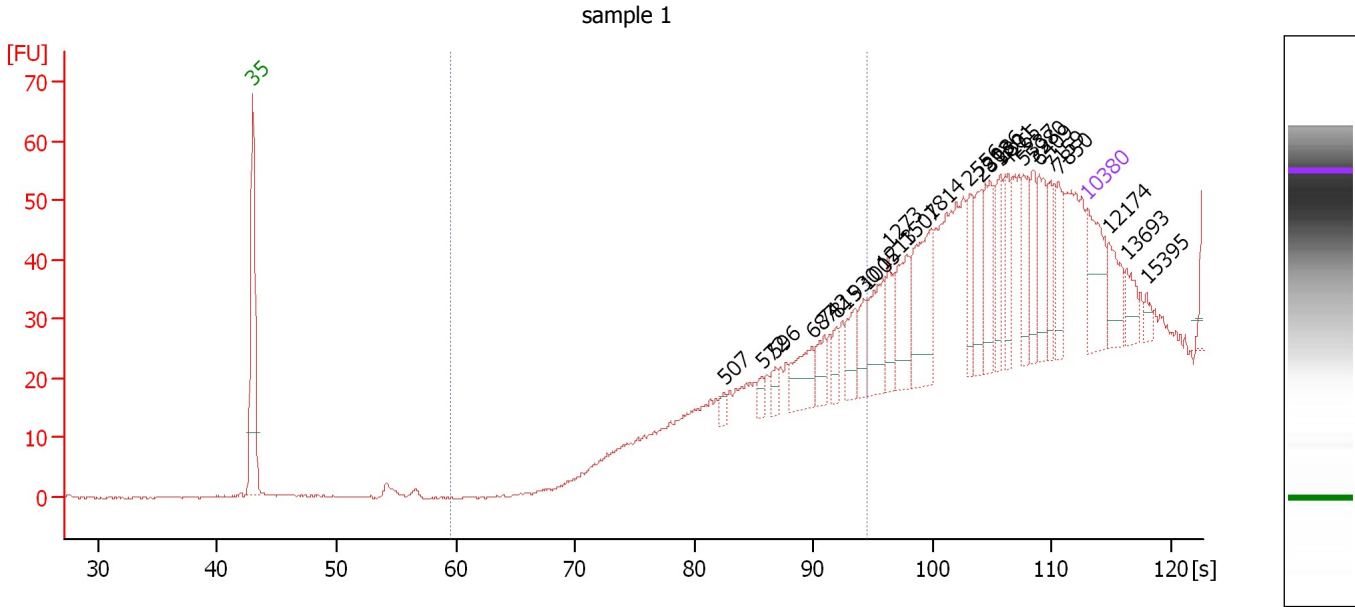
Peak table for Ladder

Peak	Aligned Migration Time [s]	Size [bp]	Conc. [pg/μl]	Molarity [pmol/l]	Observations
1	43.00	35	125.00	5,411.3	Lower Marker
2	45.24	50	150.00	4,545.5	Ladder Peak
3	50.56	100	150.00	2,272.7	Ladder Peak
4	55.09	150	150.00	1,515.2	Ladder Peak
5	59.54	200	150.00	1,136.4	Ladder Peak
6	68.43	300	150.00	757.6	Ladder Peak
7	76.54	400	150.00	568.2	Ladder Peak
8	82.25	500	150.00	454.5	Ladder Peak
9	87.02	600	150.00	378.8	Ladder Peak
10	90.32	700	150.00	324.7	Ladder Peak
11	94.42	1,000	150.00	227.3	Ladder Peak
12	101.15	2,000	150.00	113.6	Ladder Peak
13	104.65	3,000	150.00	75.8	Ladder Peak
14	109.69	7,000	150.00	32.5	Ladder Peak
15	113.00	10,380	75.00	10.9	Upper Marker

Assay Class: High Sensitivity DNA Assay
 Data Path: C:\...ents and Settings\Bioanalyzer\2013-12-04\2013-12-04_002.xad

Created: 12/4/2013 11:29:13 AM
 Modified: 12/4/2013 12:20:41 PM

Electropherogram Summary Continued ...



Overall Results for sample 1 : sample 1

Number of peaks found: 27 Corr. Area 1: 93.1
 Noise: 0.2

Peak table for sample 1 : sample 1

Peak	Aligned Migration Time [s]	Size [bp]	Conc. [pg/μl]	Molarity [pmol/l]	Observations
1	43.00	35	125.00	5,411.3	Lower Marker
2	82.57	507	11.32	33.8	
3	85.68	572	14.38	38.1	
4	86.85	596	16.92	43.0	
5	89.91	687	62.85	138.5	
6	90.90	742	36.43	74.4	
7	91.89	815	24.24	45.1	
8	93.46	930	45.24	73.7	
9	94.45	1,005	36.03	54.3	
10	95.85	1,213	70.74	88.4	
11	96.25	1,273	43.92	52.3	
12	97.83	1,507	71.03	71.4	
13	99.90	1,814	107.71	89.9	
14	103.10	2,556	40.48	24.0	
15	104.00	2,813	46.96	25.3	
16	104.76	3,086	60.82	29.9	
17	105.66	3,801	42.17	16.8	
18	106.25	4,265	45.68	16.2	
19	107.60	5,337	41.36	11.7	
20	108.41	5,980	44.44	11.3	
21	108.95	6,409	58.36	13.8	
22	109.85	7,159	38.44	8.1	
23	110.52	7,850	42.09	8.1	
24	113.00	10,380	75.00	10.9	Upper Marker
25	114.76	12,174	0.00	0.0	


Assay Class: High Sensitivity DNA Assay
Data Path: C:\...ents and Settings\Bioanalyzer\2013-12-04\2013-12-04_002.xad

Created: 12/4/2013 11:29:13 AM
Modified: 12/4/2013 12:20:41 PM

Electropherogram Summary Continued ...**... Peak table for sample 1 : sample 1**

Peak	Aligned Migration Time [s]	Size [bp]	Conc. [pg/ μ l]	Molarity [pmol/l]	Observations
26	116.24	13,693	0.00	0.0	
27	117.91	15,395	0.00	0.0	
28	123.13	20,732	0.00	0.0	
29	123.26	20,870	0.00	0.0	

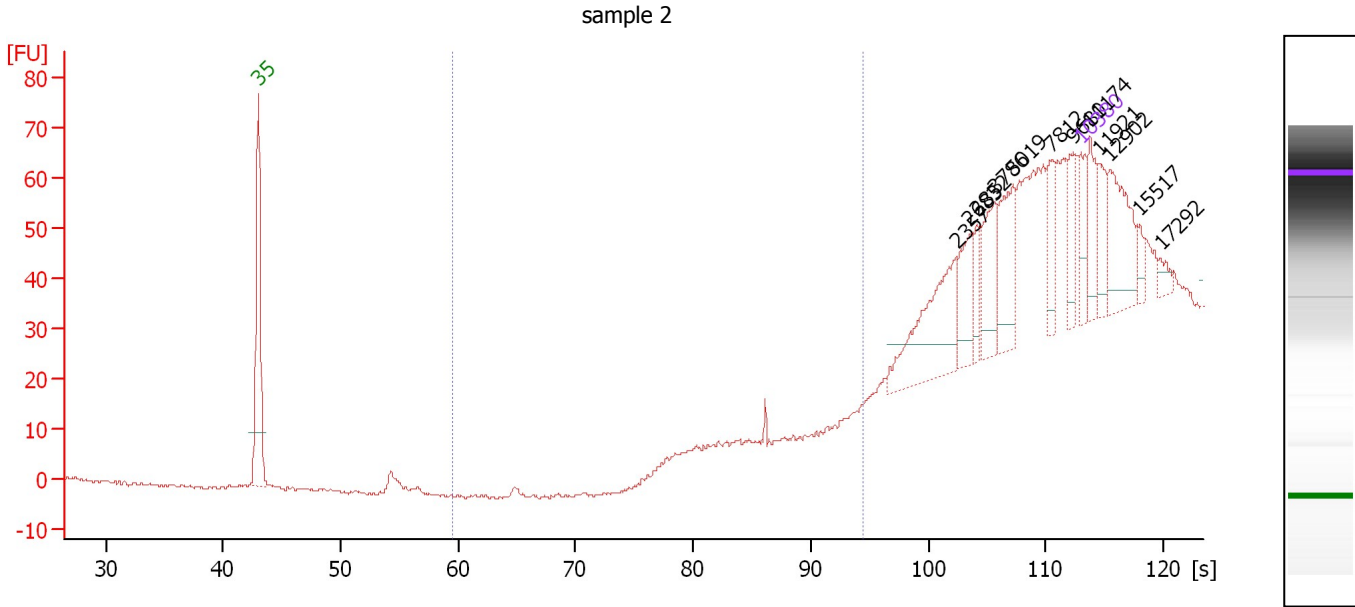
Region table for sample 1 : sample 1

From [bp]	To [bp]	Average Size [bp]	Molarity [pmol/l]	Conc. [pg/ μ l]	Corr. Area	% of Total	Size distribution in CV [%]	Color
200	1,000	746	580.3	272.01	93.1	15	19.8	

Assay Class: High Sensitivity DNA Assay
 Data Path: C:\...ents and Settings\Bioanalyzer\2013-12-04\2013-12-04_002.xad

Created: 12/4/2013 11:29:13 AM
 Modified: 12/4/2013 12:20:41 PM

Electropherogram Summary Continued ...



Overall Results for sample 2 : sample 2

Number of peaks found: 13 Corr. Area 1: 0.0
 Noise: 0.4

Peak table for sample 2 : sample 2

Peak	Aligned Migration Time [s]	Size [bp]	Conc. [pg/μl]	Molarity [pmol/l]	Observations
1	43.00	35	125.00	5,411.3	Lower Marker
2	102.40	2,357	277.21	178.2	
3	103.54	2,683	111.70	63.1	
4	104.14	2,852	54.47	28.9	
5	105.64	3,786	139.67	55.9	
6	107.20	5,019	164.69	49.7	
7	110.49	7,812	77.84	15.1	
8	112.31	9,680	88.00	13.8	
9	113.00	10,380	75.00	10.9	Upper Marker
10	113.78	11,174	0.00	0.0	
11	114.51	11,921	0.00	0.0	
12	115.47	12,902	0.00	0.0	
13	118.03	15,517	0.00	0.0	
14	119.76	17,292	0.00	0.0	
15	124.70	22,335	0.00	0.0	

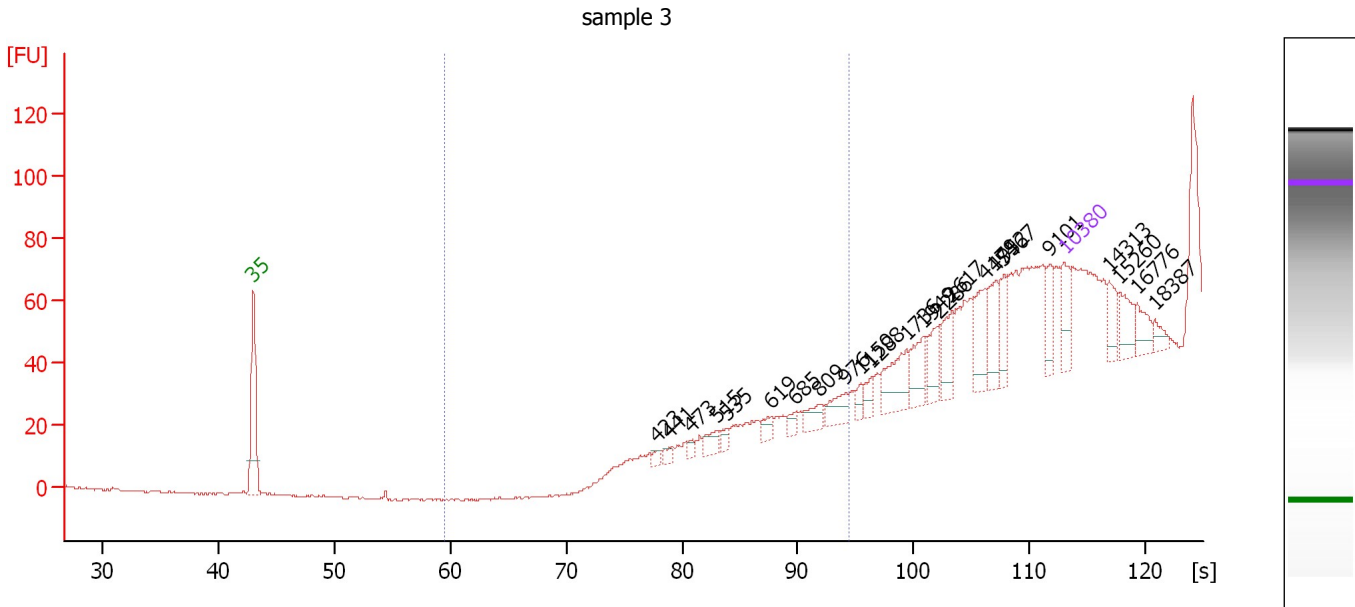
Region table for sample 2 : sample 2

From [bp]	To [bp]	Average Size [bp]	Molarity [pmol/l]	Conc. [pg/μl]	Corr. Area	% of Total	Size distribution in CV [%]	Color
200	1,000	0	0.0	0.00	0.0	0	0.0	Blue

Assay Class: High Sensitivity DNA Assay
 Data Path: C:\...ents and Settings\Bioanalyzer\2013-12-04\2013-12-04_002.xad

Created: 12/4/2013 11:29:13 AM
 Modified: 12/4/2013 12:20:41 PM

Electropherogram Summary Continued ...



Overall Results for sample 3 : sample 3

Number of peaks found: 23 Corr. Area 1: 0.0
 Noise: 0.3

Peak table for sample 3 : sample 3


Peak	Aligned Migration Time [s]	Size [bp]	Conc. [pg/μl]	Molarity [pmol/l]	Observations
1	43.00	35	125.00	5,411.3	Lower Marker
2	77.86	423	21.29	76.2	
3	78.88	441	23.67	81.3	
4	80.74	473	17.60	56.3	
5	82.96	515	41.34	121.6	
6	83.93	535	25.18	71.3	
7	87.64	619	34.18	83.7	
8	89.82	685	27.72	61.3	
9	91.81	809	45.43	85.0	
10	94.09	976	60.06	93.3	
11	95.43	1,150	21.66	28.5	
12	96.36	1,288	28.49	33.5	
13	99.37	1,736	124.36	108.6	
14	100.81	1,949	81.90	63.7	
15	102.15	2,286	76.51	50.7	
16	103.31	2,617	82.70	47.9	
17	106.14	4,179	106.93	38.8	
18	107.11	4,952	86.33	26.4	
19	107.76	5,467	66.95	18.6	
20	111.75	9,101	63.44	10.6	
21	113.00	10,380	75.00	10.9	Upper Marker
22	116.85	14,313	0.00	0.0	
23	117.77	15,260	0.00	0.0	
24	119.26	16,776	0.00	0.0	
25	120.83	18,387	0.00	0.0	

Assay Class: High Sensitivity DNA Assay
Data Path: C:\...ents and Settings\Bioanalyzer\2013-12-04\2013-12-04_002.xad

Created: 12/4/2013 11:29:13 AM
Modified: 12/4/2013 12:20:41 PM

Electropherogram Summary Continued ...

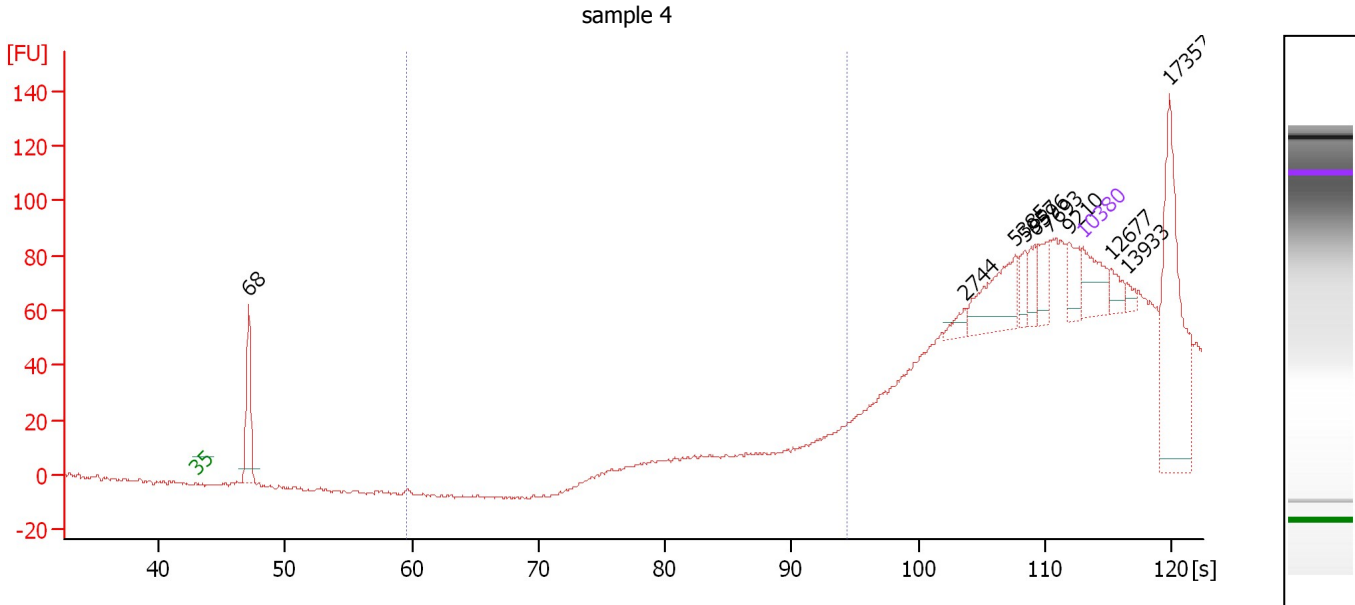
... Region table for sample 3 : sample 3

From [bp]	To [bp]	Average Size [bp]	Molarity [pmol/l]	Conc. [pg/ μ l]	Corr. Area	% of Total	Size distribution in CV [%]	Color
200	1,000	0	0.0	0.00	0.0	0	0.0	

Assay Class: High Sensitivity DNA Assay
 Data Path: C:\...ents and Settings\Bioanalyzer\2013-12-04\2013-12-04_002.xad

Created: 12/4/2013 11:29:13 AM
 Modified: 12/4/2013 12:20:41 PM

Electropherogram Summary Continued ...



Overall Results for sample 4 : sample 4

Number of peaks found: 10 Corr. Area 1: 0.0
 Noise: 0.7

Peak table for sample 4 : sample 4

Peak	Aligned Migration Time [s]	Size [bp]	Conc. [pg/μl]	Molarity [pmol/l]	Observations
1	43.00	35	125.00	5,411.3	Lower Marker
2	47.11	68	223.48	5,010.6	
3	103.76	2,744	22.46	12.4	
4	107.66	5,385	139.01	39.1	
5	108.38	5,957	35.05	8.9	
6	109.18	6,596	39.12	9.0	
7	110.37	7,693	48.56	9.6	
8	111.86	9,210	49.87	8.2	
9	113.00	10,380	75.00	10.9	Upper Marker
10	115.25	12,677	0.00	0.0	
11	116.48	13,933	0.00	0.0	
12	119.83	17,357	0.00	0.0	

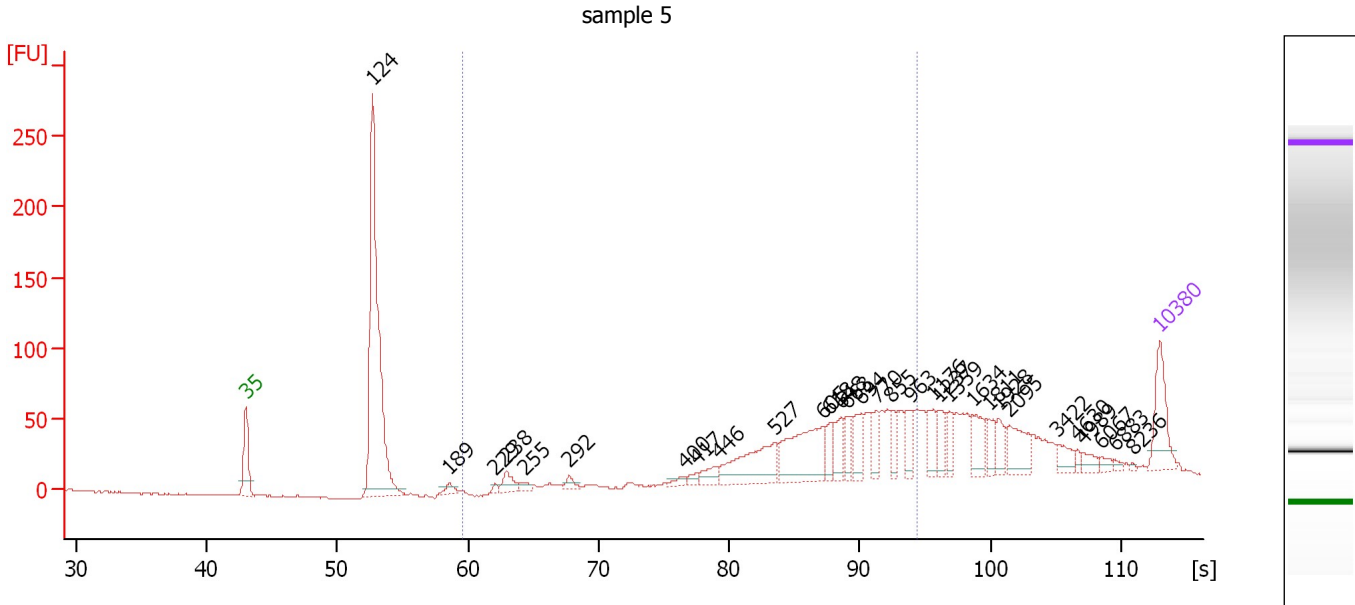
Region table for sample 4 : sample 4

From [bp]	To [bp]	Average Size [bp]	Molarity [pmol/l]	Conc. [pg/μl]	Corr. Area	% of Total	Size distribution in CV [%]	Color
200	1,000	0	0.0	0.00	0.0	0	0.0	Blue

Assay Class: High Sensitivity DNA Assay
 Data Path: C:\...ents and Settings\Bioanalyzer\2013-12-04\2013-12-04_002.xad

Created: 12/4/2013 11:29:13 AM
 Modified: 12/4/2013 12:20:41 PM

Electropherogram Summary Continued ...



Overall Results for sample 5 : sample 5

Number of peaks found: 31 Corr. Area 1: 642.6
 Noise: 0.6

Peak table for sample 5 : sample 5


Peak	Aligned Migration Time [s]	Size [bp]	Conc. [pg/μl]	Molarity [pmol/l]	Observations
1	43.00	35	125.00	5,411.3	Lower Marker
2	52.71	124	768.81	9,415.9	
3	58.55	189	17.83	143.0	
4	62.08	229	7.07	46.9	
5	62.95	238	34.47	219.1	
6	64.39	255	14.42	85.8	
7	67.76	292	16.07	83.3	
8	76.56	400	12.92	48.9	
9	77.51	417	11.84	43.0	
10	79.15	446	29.37	99.8	
11	83.55	527	143.56	412.5	
12	87.17	605	171.04	428.5	
13	87.62	618	30.37	74.4	
14	88.61	648	52.15	121.9	
15	89.10	663	36.73	83.9	
16	90.13	694	56.61	123.5	
17	91.28	770	37.54	73.8	
18	92.44	855	33.32	59.1	
19	93.92	963	43.21	68.0	
20	95.60	1,176	38.33	49.4	
21	96.01	1,237	32.78	40.1	
22	96.84	1,359	27.21	30.3	
23	98.69	1,634	47.11	43.7	
24	99.88	1,811	28.00	23.4	
25	100.66	1,928	26.14	20.6	

Assay Class: High Sensitivity DNA Assay
 Data Path: C:\...ents and Settings\Bioanalyzer\2013-12-04\2013-12-04_002.xad


Created: 12/4/2013 11:29:13 AM
 Modified: 12/4/2013 12:20:41 PM

Electropherogram Summary Continued ...

... Peak table for sample 5 : sample 5

Peak	Aligned Migration Time [s]	Size [bp]	Conc. [pg/ μ l]	Molarity [pmol/l]	Observations
26	101.48	2,095	56.82	41.1	
27	105.19	3,422	22.79	10.1	
28	106.71	4,630	7.75	2.5	
29	107.16	4,989	15.62	4.7	
30	108.52	6,067	9.43	2.4	
31	109.55	6,883	5.24	1.2	
32	110.90	8,236	2.37	0.4	
33	 113.00	10,380	75.00	10.9	Upper Marker

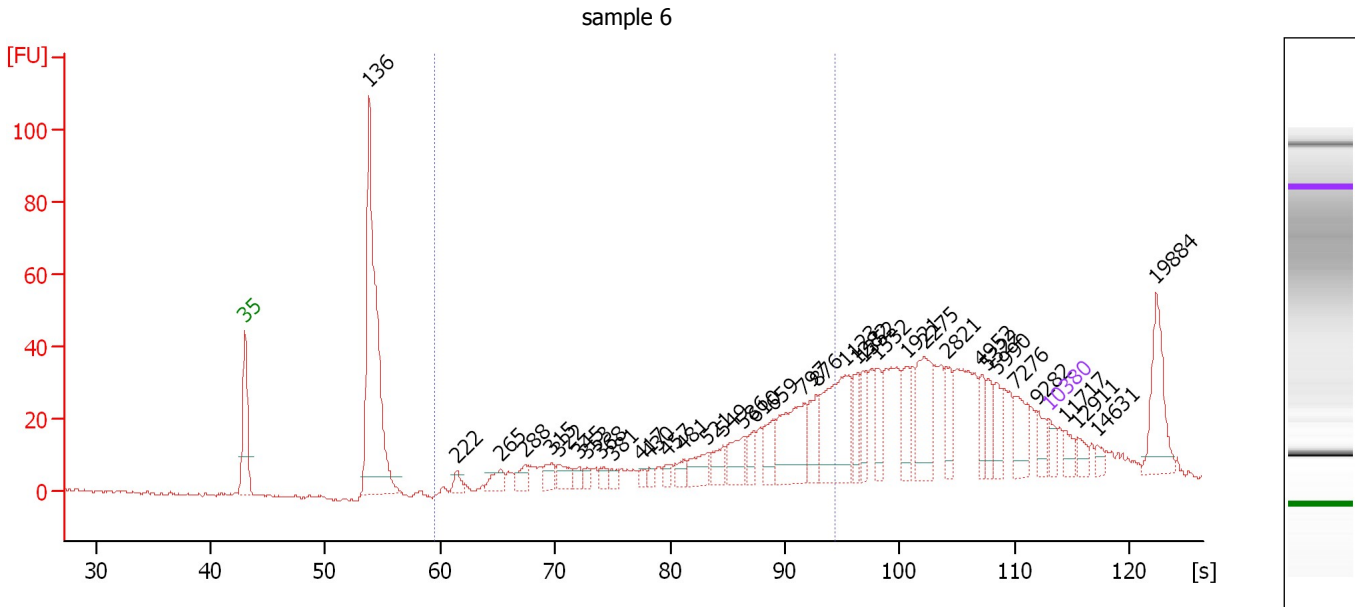
Region table for sample 5 : sample 5

From [bp]	To [bp]	Average Size [bp]	Molarity [pmol/l]	Conc. [pg/ μ l]	Corr. Area	% of Total	Size distribution in CV [%]	Color
200	1,000	668	1,962.3	788.07	642.6	42	24.0	

Assay Class: High Sensitivity DNA Assay
 Data Path: C:\...ents and Settings\Bioanalyzer\2013-12-04\2013-12-04_002.xad

Created: 12/4/2013 11:29:13 AM
 Modified: 12/4/2013 12:20:41 PM

Electropherogram Summary Continued ...



Overall Results for sample 6 : sample 6

Number of peaks found: 37 Corr. Area 1: 320.5
 Noise: 0.4

Peak table for sample 6 : sample 6

Peak	Aligned Migration Time [s]	Size [bp]	Conc. [pg/μl]	Molarity [pmol/l]	Observations
1	43.00	35	125.00	5,411.3	Lower Marker
2	53.84	136	2,732.96	30,392.5	
3	61.46	222	90.45	618.4	
4	65.29	265	140.65	805.2	
5	67.39	288	118.62	623.4	
6	69.64	315	113.81	547.7	
7	70.24	322	140.00	658.1	
8	72.07	345	64.53	283.6	
9	72.77	353	54.68	234.4	
10	73.93	368	73.03	300.8	
11	74.96	381	51.46	204.9	
12	77.49	417	44.72	162.7	
13	78.23	430	46.65	164.5	
14	79.78	457	59.49	197.4	
15	81.18	481	93.67	295.0	
16	83.23	521	187.18	544.8	
17	84.59	549	146.89	405.4	
18	86.36	586	227.02	586.7	
19	87.35	610	112.54	279.5	
20	88.98	659	199.88	459.3	
21	91.64	797	540.94	1,028.5	
22	92.72	876	229.07	396.4	
23	95.24	1,123	669.81	904.0	
24	96.32	1,282	164.97	194.9	
25	96.79	1,352	155.23	174.0	

Assay Class: High Sensitivity DNA Assay
 Data Path: C:\...ents and Settings\Bioanalyzer\2013-12-04\2013-12-04_002.xad


Created: 12/4/2013 11:29:13 AM
 Modified: 12/4/2013 12:20:41 PM

Electropherogram Summary Continued ...

... Peak table for sample 6 : sample 6

Peak	Aligned Migration Time [s]	Size [bp]	Conc. [pg/ μ l]	Molarity [pmol/l]	Observations
26	98.00	1,532	164.30	162.5	
27	100.62	1,921	176.86	139.5	
28	102.11	2,275	375.86	250.4	
29	104.03	2,821	166.84	89.6	
30	107.11	4,952	131.38	40.2	
31	107.58	5,322	125.75	35.8	
32	108.42	5,990	145.95	36.9	
33	109.96	7,276	210.50	43.8	
34	111.93	9,282	99.76	16.3	
35	113.00	10,380	75.00	10.9	Upper Marker
36	114.31	11,717	0.00	0.0	
37	115.48	12,911	0.00	0.0	
38	117.16	14,631	0.00	0.0	
39	122.30	19,884	0.00	0.0	

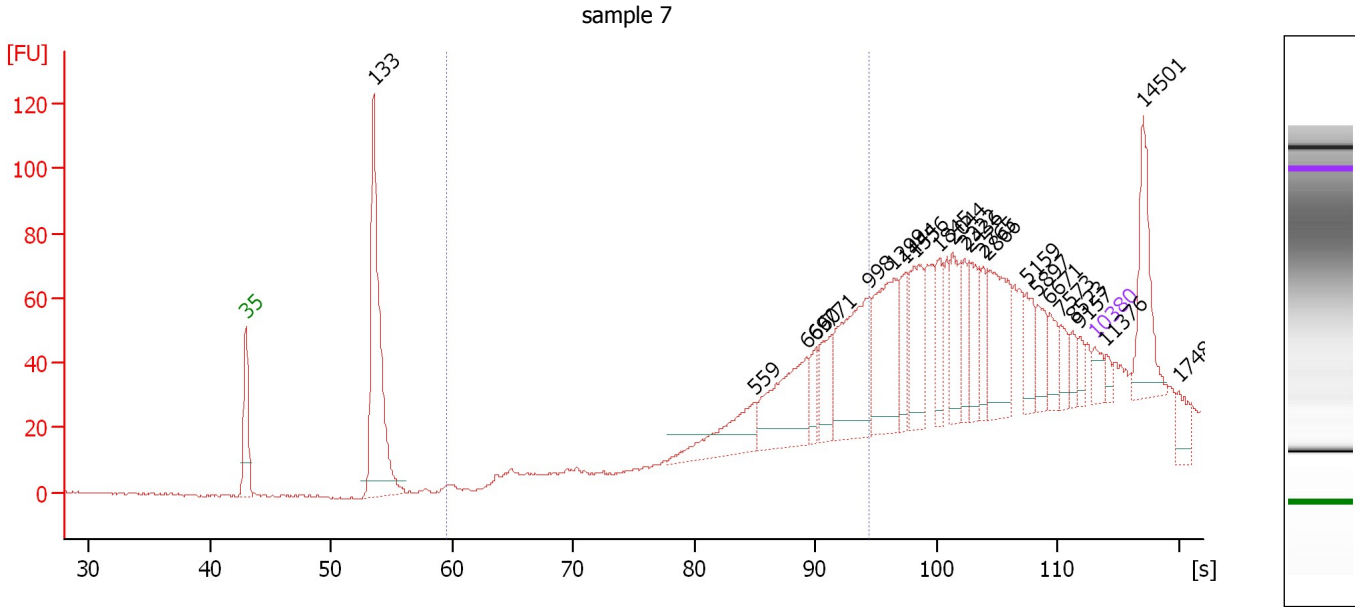
Region table for sample 6 : sample 6

From [bp]	To [bp]	Average Size [bp]	Molarity [pmol/l]	Conc. [pg/ μ l]	Corr. Area	% of Total	Size distribution in CV [%]	Color
200	1,000	618	9,795.9	3,238.05	320.5	29	33.7	

Assay Class: High Sensitivity DNA Assay
 Data Path: C:\...ents and Settings\Bioanalyzer\2013-12-04\2013-12-04_002.xad

Created: 12/4/2013 11:29:13 AM
 Modified: 12/4/2013 12:20:41 PM

Electropherogram Summary Continued ...



Overall Results for sample 7 : sample 7

Number of peaks found: 24 Corr. Area 1: 308.4
 Noise: 0.4

Peak table for sample 7 : sample 7

Peak	Aligned Migration Time [s]	Size [bp]	Conc. [pg/μl]	Molarity [pmol/l]	Observations
1	43.00	35	125.00	5,411.3	Lower Marker
2	53.54	133	1,819.08	20,728.2	
3	85.04	559	429.67	1,165.4	
4	89.21	666	643.76	1,463.9	
5	90.01	690	144.37	316.8	
6	91.29	771	249.70	490.7	
7	94.39	998	730.18	1,108.4	
8	96.43	1,299	587.19	684.9	
9	97.41	1,444	178.81	187.6	
10	98.16	1,556	348.74	339.7	
11	100.11	1,845	185.32	152.2	
12	101.30	2,044	246.07	182.4	
13	102.28	2,322	141.92	92.6	
14	102.68	2,436	211.80	131.7	
15	103.83	2,765	131.27	71.9	
16	104.18	2,866	445.07	235.3	
17	107.37	5,159	159.02	46.7	
18	108.30	5,897	149.50	38.4	
19	109.28	6,671	125.73	28.6	
20	110.25	7,573	82.61	16.5	
21	111.18	8,523	73.45	13.1	
22	111.80	9,157	53.78	8.9	
23	113.00	10,380	75.00	10.9	Upper Marker
24	113.97	11,376	0.00	0.0	
25	117.03	14,501	0.00	0.0	


Assay Class: High Sensitivity DNA Assay
Data Path: C:\...ents and Settings\Bioanalyzer\2013-12-04\2013-12-04_002.xad

Created: 12/4/2013 11:29:13 AM
Modified: 12/4/2013 12:20:41 PM

Electropherogram Summary Continued ...**... Peak table for sample 7 : sample 7**

Peak	Aligned Migration Time [s]	Size [bp]	Conc. [pg/ μ l]	Molarity [pmol/l]	Observations
26	119.96	17,489	0.00	0.0	

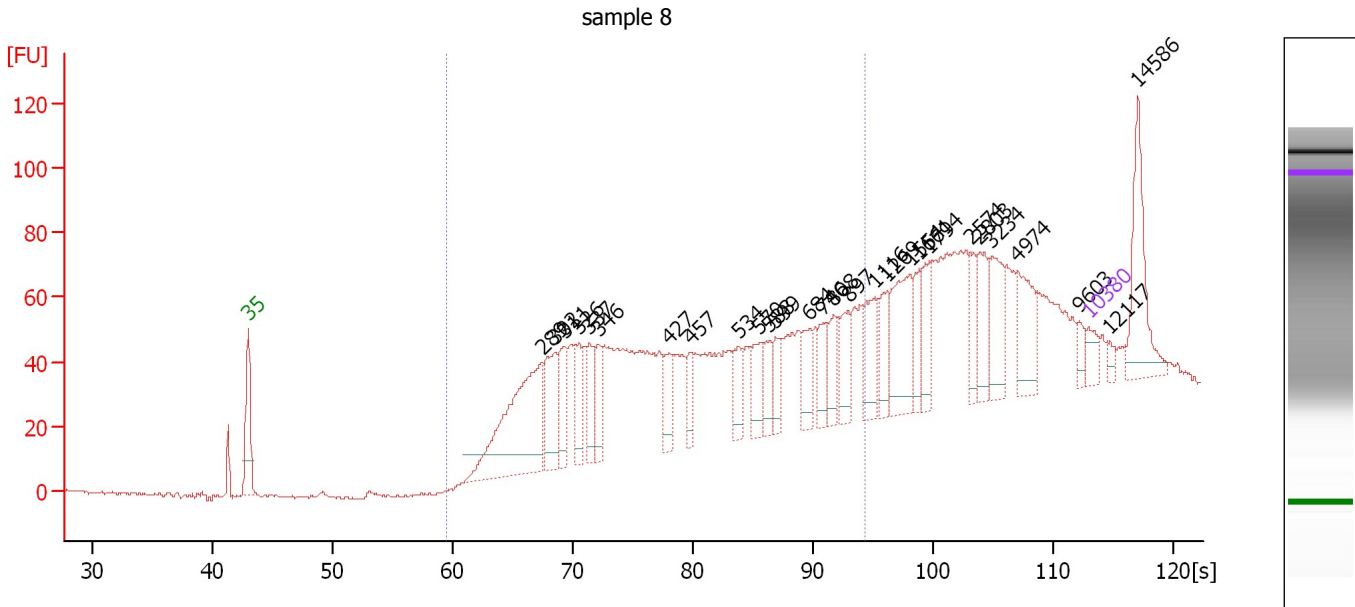
Region table for sample 7 : sample 7

From [bp]	To [bp]	Average Size [bp]	Molarity [pmol/l]	Conc. [pg/ μ l]	Corr. Area	% of Total	Size distribution in CV [%]	Color
200	1,000	739	4,163.4	1,935.96	308.4	23	19.7	

Assay Class: High Sensitivity DNA Assay
 Data Path: C:\...ents and Settings\Bioanalyzer\2013-12-04\2013-12-04_002.xad

Created: 12/4/2013 11:29:13 AM
 Modified: 12/4/2013 12:20:41 PM

Electropherogram Summary Continued ...



Overall Results for sample 8 : sample 8

Number of peaks found: 28 Corr. Area 1: 972.4
 Noise: 0.4

Peak table for sample 8 : sample 8

Peak	Aligned Migration Time [s]	Size [bp]	Conc. [pg/μl]	Molarity [pmol/l]	Observations
1	43.00	35	125.00	5,411.3	Lower Marker
2	67.47	289	1,217.09	6,377.9	
3	68.58	302	408.74	2,051.6	
4	69.35	311	289.84	1,411.0	
5	70.55	326	251.97	1,170.6	
6	71.45	337	210.14	944.3	
7	72.16	346	203.05	889.2	
8	78.07	427	189.10	671.5	
9	79.81	457	138.84	460.1	
10	83.88	534	169.68	481.3	
11	85.58	570	197.64	525.5	
12	86.43	588	143.84	370.8	
13	86.97	599	143.53	363.1	
14	89.79	684	185.85	411.8	
15	90.95	746	161.64	328.4	
16	91.80	808	169.57	317.9	
17	93.01	897	192.20	324.8	
18	95.20	1,116	235.37	319.6	
19	96.23	1,269	158.32	189.1	
20	98.15	1,554	386.37	376.6	
21	98.87	1,661	148.19	135.2	
22	99.76	1,794	170.84	144.3	
23	103.16	2,574	118.82	69.9	
24	103.96	2,803	197.01	106.5	
25	104.95	3,234	244.34	114.5	

Assay Class: High Sensitivity DNA Assay
 Data Path: C:\...ents and Settings\Bioanalyzer\2013-12-04\2013-12-04_002.xad

Created: 12/4/2013 11:29:13 AM
 Modified: 12/4/2013 12:20:41 PM

Electropherogram Summary Continued ...

... Peak table for sample 8 : sample 8

Peak	Aligned Migration Time [s]	Size [bp]	Conc. [pg/μl]	Molarity [pmol/l]	Observations
26	107.14	4,974	253.46	77.2	
27	112.24	9,603	58.74	9.3	
28	113.00	10,380	75.00	10.9	Upper Marker
29	114.70	12,117	0.00	0.0	
30	117.12	14,586	0.00	0.0	

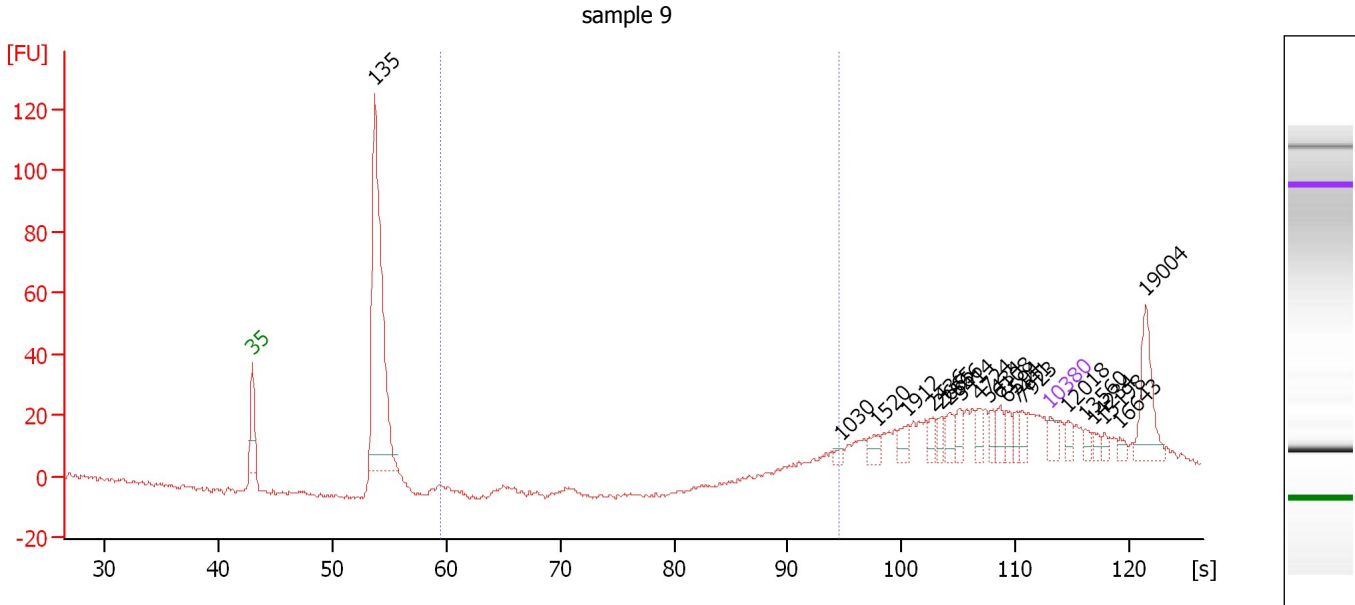
Region table for sample 8 : sample 8

From [bp]	To [bp]	Average Size [bp]	Molarity [pmol/l]	Conc. [pg/μl]	Corr. Area	% of Total	Size distribution in CV [%]	Color
200	1,000	503	22,325.8	6,099.53	972.4	55	38.7	

Assay Class: High Sensitivity DNA Assay
 Data Path: C:\...ents and Settings\Bioanalyzer\2013-12-04\2013-12-04_002.xad

Created: 12/4/2013 11:29:13 AM
 Modified: 12/4/2013 12:20:41 PM

Electropherogram Summary Continued ...



Overall Results for sample 9 : sample 9

Number of peaks found: 20 Corr. Area 1: 12.0
 Noise: 0.8

Peak table for sample 9 : sample 9


Peak	Aligned Migration Time [s]	Size [bp]	Conc. [pg/μl]	Molarity [pmol/l]	Observations
1	43.00	35	125.00	5,411.3	Lower Marker
2	53.75	135	2,614.07	29,292.7	
3	94.62	1,030	30.53	44.9	
4	97.92	1,520	72.23	72.0	
5	100.56	1,912	80.02	63.4	
6	102.68	2,436	64.16	39.9	
7	103.48	2,665	57.35	32.6	
8	104.19	2,866	84.11	44.5	
9	105.18	3,414	79.21	35.2	
10	106.82	4,724	66.32	21.3	
11	107.72	5,434	67.82	18.9	
12	108.57	6,108	75.04	18.6	
13	109.18	6,594	74.69	17.2	
14	110.12	7,441	60.18	12.3	
15	110.60	7,923	59.13	11.3	
16	113.00	10,380	75.00	10.9	Upper Marker
17	114.60	12,018	0.00	0.0	
18	116.11	13,560	0.00	0.0	
19	116.77	14,234	0.00	0.0	
20	117.71	15,198	0.00	0.0	
21	119.13	16,643	0.00	0.0	
22	121.44	19,004	0.00	0.0	

Assay Class: High Sensitivity DNA Assay
Data Path: C:\...ents and Settings\Bioanalyzer\2013-12-04\2013-12-04_002.xad

Created: 12/4/2013 11:29:13 AM
Modified: 12/4/2013 12:20:41 PM

Electropherogram Summary Continued ...

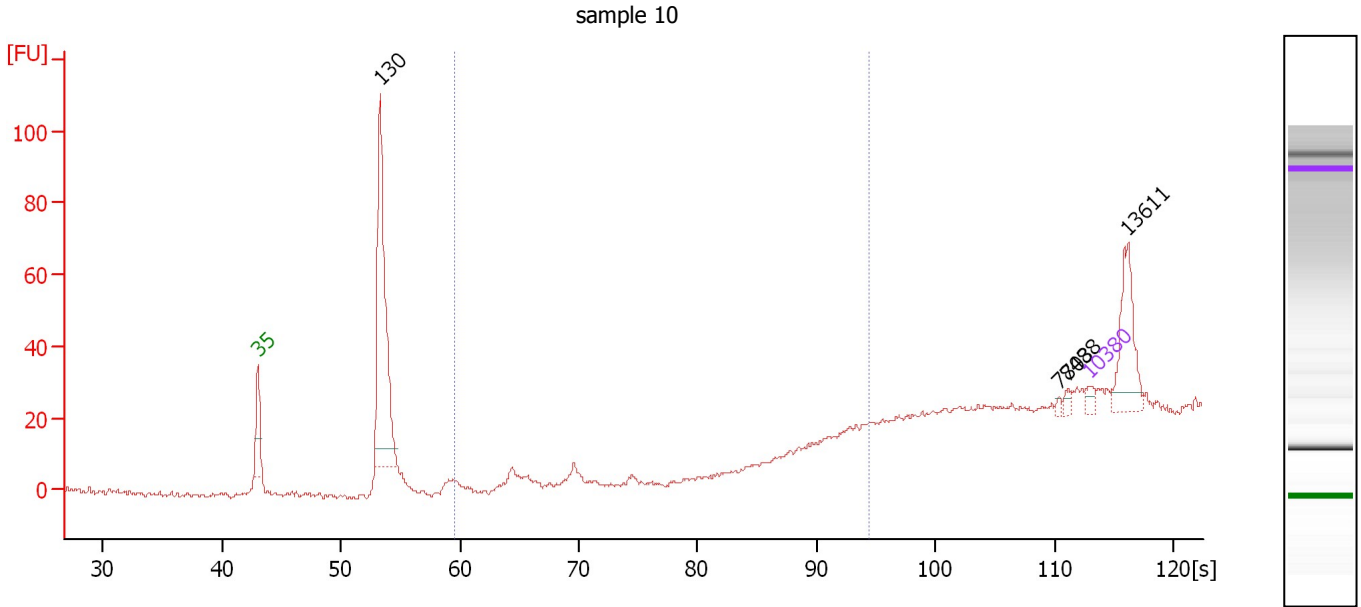
... Region table for sample 9 : sample 9

From [bp]	To [bp]	Average Size [bp]	Molarity [pmol/l]	Conc. [pg/ μ l]	Corr. Area	% of Total	Size distribution in CV [%]	Color
200	1,000	888	162.8	95.11	12.0	2	9.5	

Assay Class: High Sensitivity DNA Assay
 Data Path: C:\...ents and Settings\Bioanalyzer\2013-12-04\2013-12-04_002.xad

Created: 12/4/2013 11:29:13 AM
 Modified: 12/4/2013 12:20:41 PM

Electropherogram Summary Continued ...



Overall Results for sample 10 : sample 10

Number of peaks found: 4 Corr. Area 1: 0.0
 Noise: 0.7

Peak table for sample 10 : sample 10

Peak	Aligned Migration Time [s]	Size [bp]	Conc. [pg/μl]	Molarity [pmol/l]	Observations
1	43.00	35	125.00	5,411.3	Lower Marker
2	53.30	130	3,778.95	43,964.5	
3	110.38	7,703	37.64	7.4	
4	111.15	8,488	54.81	9.8	
5	113.00	10,380	75.00	10.9	Upper Marker
6	116.16	13,611	0.00	0.0	

Region table for sample 10 : sample 10

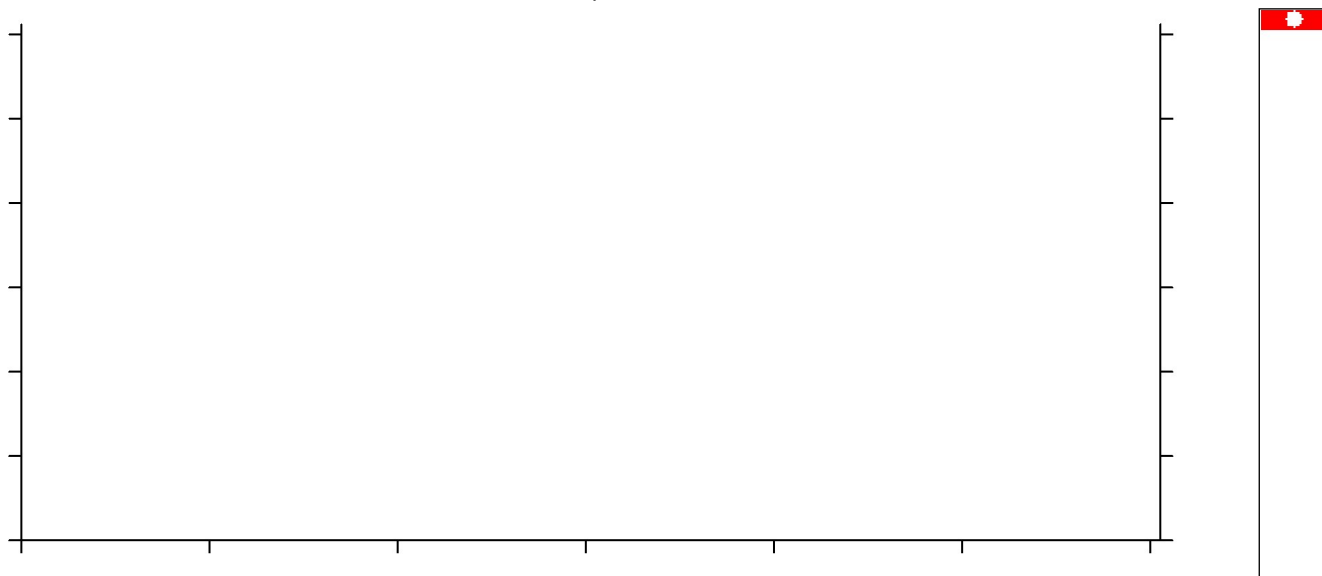
From [bp]	To [bp]	Average Size [bp]	Molarity [pmol/l]	Conc. [pg/μl]	Corr. Area	% of Total	Size distribution in CV [%]	Color
200	1,000	990	0.4	0.23	0.0	0	2.3	Blue

Assay Class: High Sensitivity DNA Assay
Data Path: C:\...ents and Settings\Bioanalyzer\2013-12-04\2013-12-04_002.xad

Created: 12/4/2013 11:29:13 AM
Modified: 12/4/2013 12:20:41 PM

Electropherogram Summary Continued ...

sample 11



Setpoint Deviations for sample 11 : sample 11

End Analysis Time Range [s] : 14.9

Assay Class: High Sensitivity DNA Assay
Data Path: C:\...ents and Settings\Bioanalyzer\2013-12-04\2013-12-04_002.xad

Created: 12/4/2013 11:29:13 AM
Modified: 12/4/2013 12:20:41 PM

Gel Image

