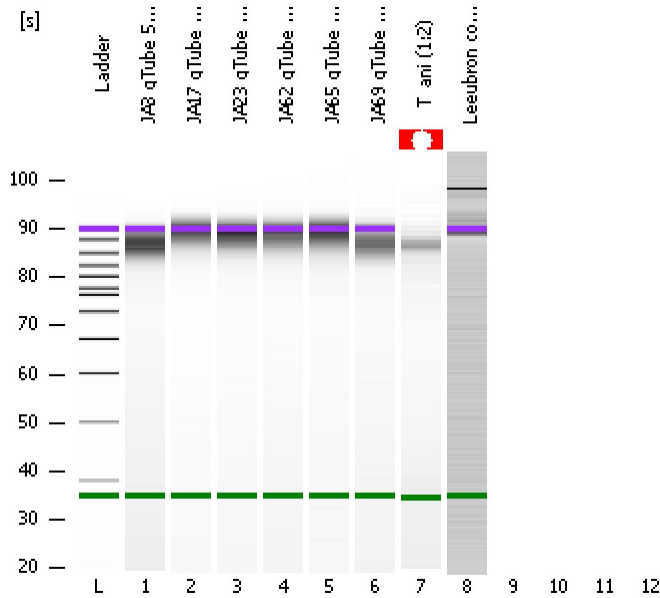


Assay Class: DNA 12000
Data Path: C:\...ents and Settings\Bioanalyzer\2013-12-04\2013-12-04_004.xad

Created: 12/4/2013 3:24:40 PM
Modified: 12/4/2013 3:54:02 PM

Electrophoresis File Run Summary



Instrument Information:

Instrument Name: DE13701086 Firmware: C.01.069
Serial#: DE13701086 Type: G2938B

Assay Information:

Assay Origin Path: C:\Program Files\Agilent\2100 bioanalyzer\2100 expert\assays\dsDNA\DNA 12000 Series II.xsy

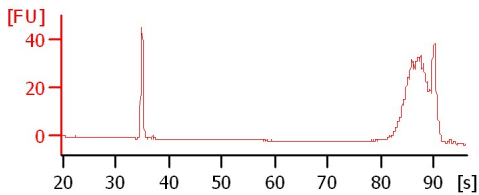
Assay Class: DNA 12000
Version: 2.4
Assay Comments: DNA Analysis 100 -12000 bp

© Copyright 2003-2009 Agilent Technologies, Inc.

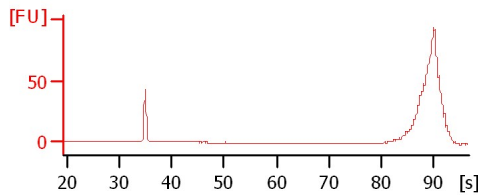
Chip Information:

Chip Lot #:
Reagent Kit Lot #:
Chip Comments:

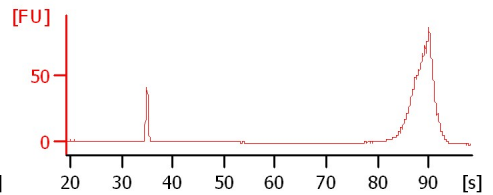
JA3 gTube 5150 rpm 1:2



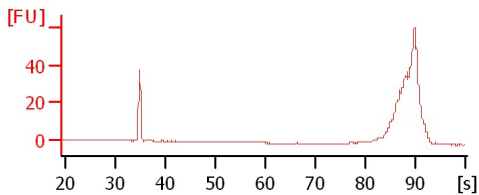
JA17 gTube 5150 rpm 1:3



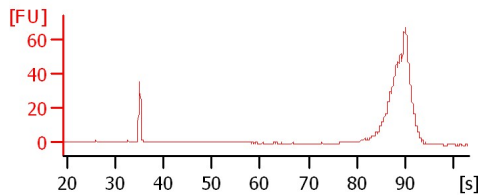
JA23 gTube 5150 rpm 1:3



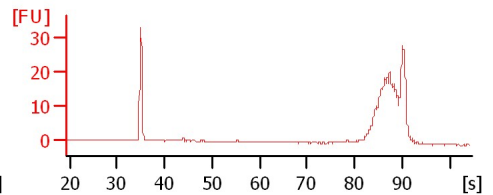
JA62 gTube 5150 rpm 1:3



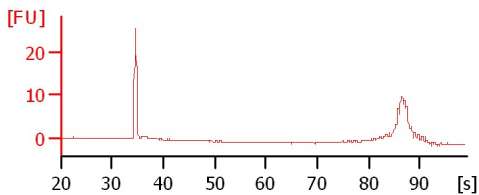
JA65 gTube 5150 rpm 1:3



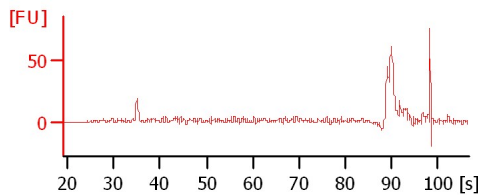
JA69 gTube 5150 rpm 1:2



T_ani (1:2)



Leeubron conc.2



Assay Class: DNA 12000
Data Path: C:\...ents and Settings\Bioanalyzer\2013-12-04\2013-12-04_004.xad

Created: 12/4/2013 3:24:40 PM
Modified: 12/4/2013 3:54:02 PM

Electrophoresis File Run Summary (Chip Summary)

Sample Name	Sample Comment	Rest. Digest	Status	Observation	Result Label	Result Color
JA3 gTube 5150 rpm 1:2		<input type="checkbox"/>	✓			
JA17 gTube 5150 rpm 1:3		<input type="checkbox"/>	✓			
JA23 gTube 5150 rpm 1:3		<input type="checkbox"/>	✓			
JA62 gTube 5150 rpm 1:3		<input type="checkbox"/>	✓			
JA65 gTube 5150 rpm 1:3		<input type="checkbox"/>	✓			
JA69 gTube 5150 rpm 1:2		<input type="checkbox"/>	✓			
T_ani (1:2)		<input type="checkbox"/>	✓			
Leeubron conc.2		<input type="checkbox"/>	✓			
		<input type="checkbox"/>				
		<input type="checkbox"/>				
		<input type="checkbox"/>				
		<input type="checkbox"/>				
Ladder		<input type="checkbox"/>	✓			
Chip Lot #				Reagent Kit Lot #		

Chip Comments :

Assay Class: DNA 12000
Data Path: C:\...ents and Settings\Bioanalyzer\2013-12-04\2013-12-04_004.xad

Created: 12/4/2013 3:24:40 PM
Modified: 12/4/2013 3:54:02 PM

Electrophoresis Assay Details

General Analysis Settings

Number of Available Sample and Ladder Wells (Max.) : 13
Minimum Visible Range [s] : 20
Maximum Visible Range [s] : 99
Start Analysis Time Range [s] : 20
End Analysis Time Range [s] : 98.95
Ladder Concentration [ng/μl] : 44
Uses Standard Area for Ladder Fragments
Lower Marker Concentration [ng/μl] : 8.3
Upper Marker Concentration [ng/μl] : 4.2
Used Upper Marker for Quantitation
This is a Qualitative Assay Only
Standard Curve Fit is Point to Point
Show Data Aligned to Lower and Upper Marker

Integrator Settings

Integration Start Time [s] : 20
Integration End Time [s] : 98.95
Slope Threshold : 0.8
Height Threshold [FU] : 20
Area Threshold : 0.1
Width Threshold [s] : 0.5
Baseline Plateau [s] : 0.5

Filter Settings

Filter Width [s] : 0.5
Polynomial Order : 4

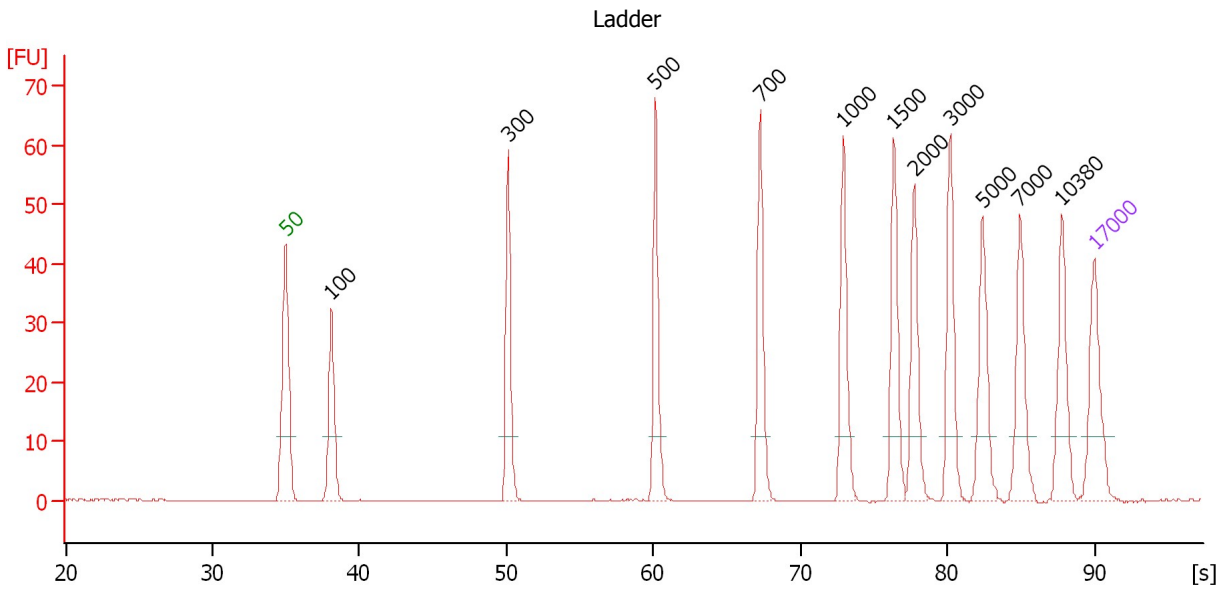
Ladder

Ladder Peak	Size	Area
1	50	120
2	100	48
3	300	61
4	500	77
5	700	81
6	1000	86
7	1500	92
8	2000	92
9	3000	96
10	5000	100
11	7000	98
12	10380	102
13	17000	110

Assay Class: DNA 12000
 Data Path: C:\...ents and Settings\Bioanalyzer\2013-12-04\2013-12-04_004.xad

Created: 12/4/2013 3:24:40 PM
 Modified: 12/4/2013 3:54:02 PM

Electropherogram Summary



Peak table for Ladder

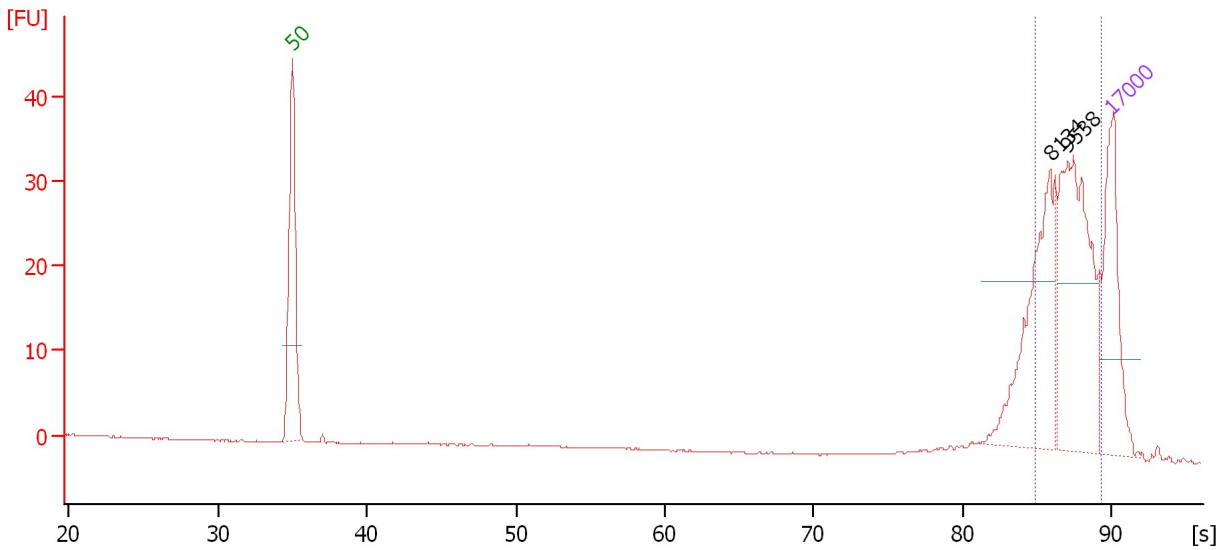
Peak	Size [bp]	Conc. [ng/μl]	Molarity [nmol/l]	Observations
1	50	8.30	251.5	Lower Marker
2	100	4.00	60.6	Ladder Peak
3	300	4.00	20.2	Ladder Peak
4	500	4.00	12.1	Ladder Peak
5	700	4.00	8.7	Ladder Peak
6	1,000	4.00	6.1	Ladder Peak
7	1,500	4.00	4.0	Ladder Peak
8	2,000	4.00	3.0	Ladder Peak
9	3,000	4.00	2.0	Ladder Peak
10	5,000	4.00	1.2	Ladder Peak
11	7,000	4.00	0.9	Ladder Peak
12	10,380	4.00	0.6	Ladder Peak
13	17,000	4.20	0.4	Upper Marker

Assay Class: DNA 12000
 Data Path: C:\...ents and Settings\Bioanalyzer\2013-12-04\2013-12-04_004.xad

Created: 12/4/2013 3:24:40 PM
 Modified: 12/4/2013 3:54:02 PM

Electropherogram Summary Continued ...

JA3 gTube 5150 rpm 1:2



Overall Results for sample 1 : JA3 gTube 5150 rpm 1:2

Number of peaks found: 2 Area: 134.2

Peak table for sample 1 : JA3 gTube 5150 rpm 1:2

Peak	Size [bp]	Conc. [ng/μl]	Molarity [nmol/l]	Observations
1	50	8.30	251.5	Lower Marker
2	8,134	6.13	1.1	
3	9,538	7.48	1.2	
4	17,000	4.20	0.4	Upper Marker

Region table for sample 1 : JA3 gTube 5150 rpm 1:2

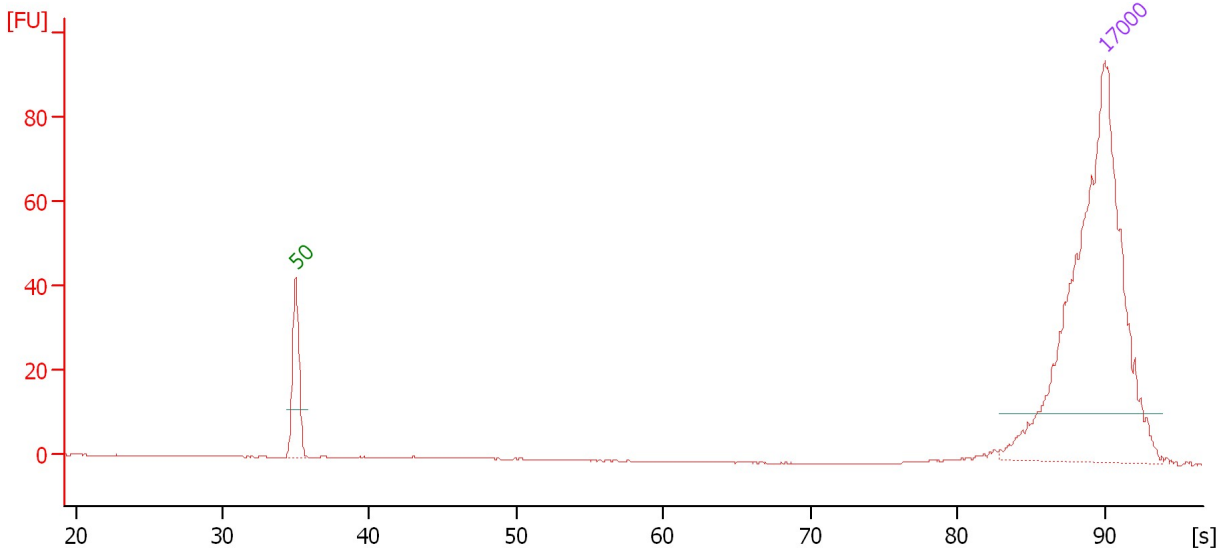
From [bp]	To [bp]	Average Size [bp]	Conc. [ng/μl]	Area	Col Size distribution in CV or [%]	% of Total
6,919	15,083	9,872	11.68	134.2	21.4	77

Assay Class: DNA 12000
Data Path: C:\...ents and Settings\Bioanalyzer\2013-12-04\2013-12-04_004.xad

Created: 12/4/2013 3:24:40 PM
Modified: 12/4/2013 3:54:02 PM

Electropherogram Summary Continued ...

JA17 gTube 5150 rpm 1:3



Overall Results for sample 2 : JA17 gTube 5150 rpm 1:3

Number of peaks found: 0

Peak table for sample 2 : JA17 gTube 5150 rpm 1:3

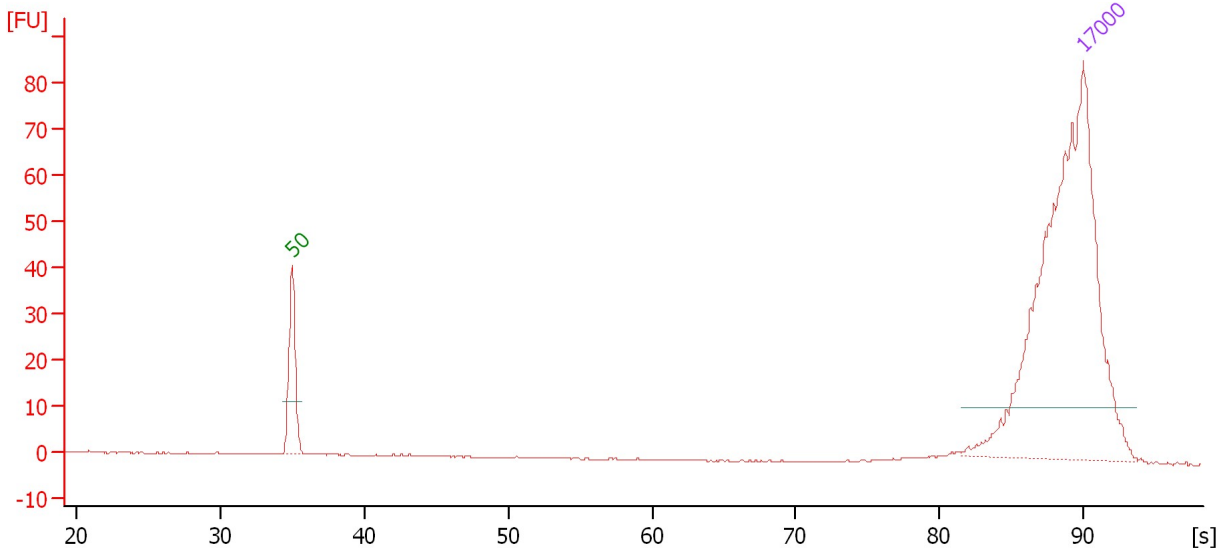
Peak	Size [bp]	Conc. [ng/μl]	Molarity [nmol/l]	Observations
1	50	8.30	251.5	Lower Marker
2	17,000	4.20	0.4	Upper Marker

Assay Class: DNA 12000
Data Path: C:\...ents and Settings\Bioanalyzer\2013-12-04\2013-12-04_004.xad

Created: 12/4/2013 3:24:40 PM
Modified: 12/4/2013 3:54:02 PM

Electropherogram Summary Continued ...

JA23 gTube 5150 rpm 1:3



Overall Results for sample 3 : JA23 gTube 5150 rpm 1:3

Number of peaks found: 0

Peak table for sample 3 : JA23 gTube 5150 rpm 1:3

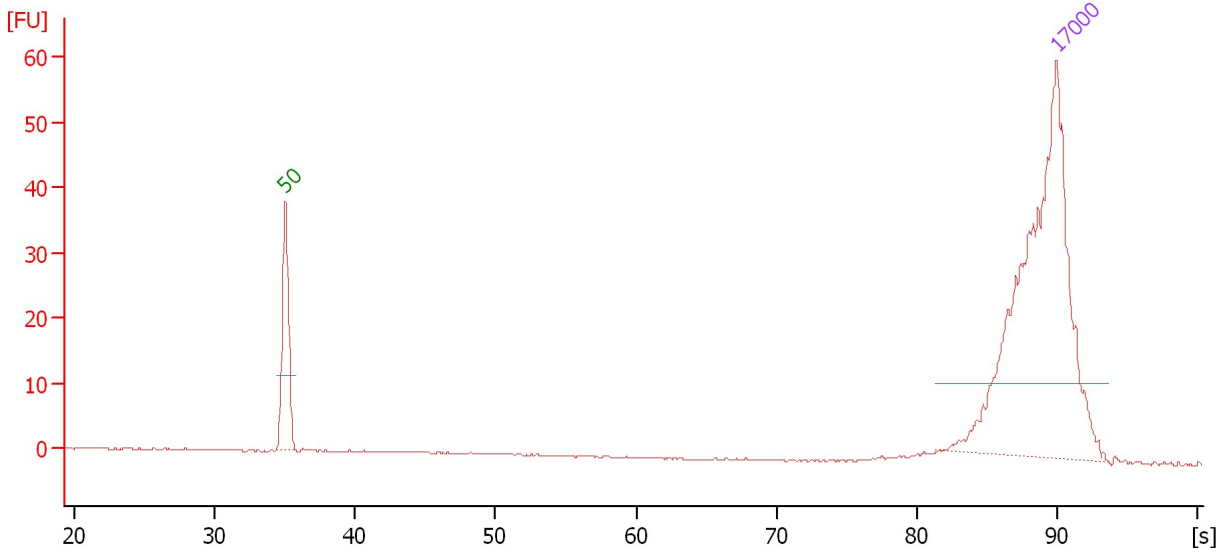
Peak	Size [bp]	Conc. [ng/μl]	Molarity [nmol/l]	Observations
1	50	8.30	251.5	Lower Marker
2	17,000	4.20	0.4	Upper Marker

Assay Class: DNA 12000
Data Path: C:\...ents and Settings\Bioanalyzer\2013-12-04\2013-12-04_004.xad

Created: 12/4/2013 3:24:40 PM
Modified: 12/4/2013 3:54:02 PM

Electropherogram Summary Continued ...

JA62 gTube 5150 rpm 1:3



Overall Results for sample 4 : JA62 gTube 5150 rpm 1:3

Number of peaks found: 0

Peak table for sample 4 : JA62 gTube 5150 rpm 1:3

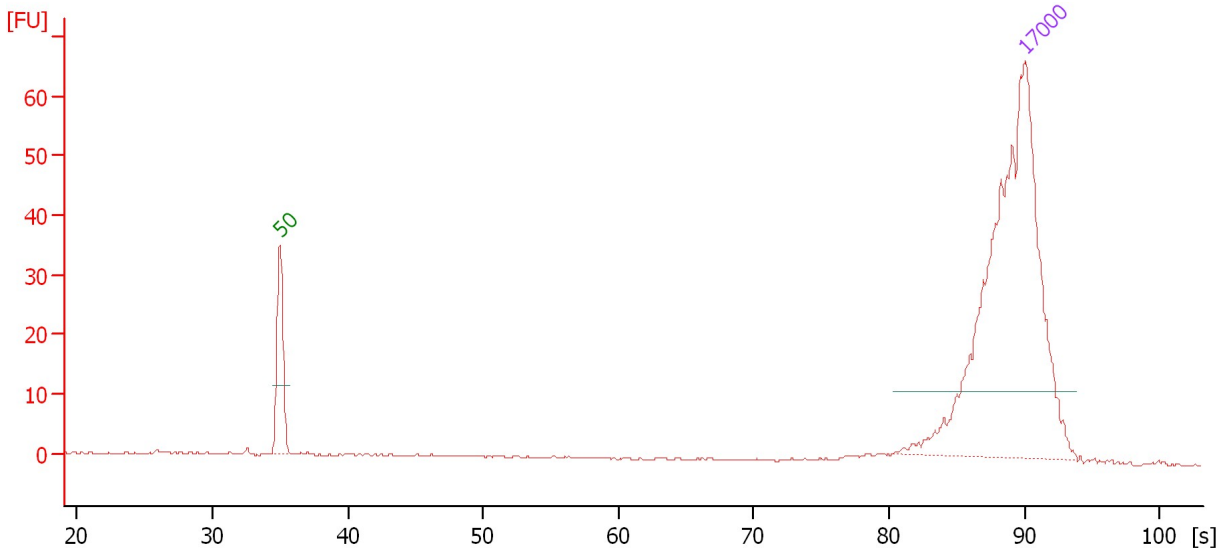
Peak	Size [bp]	Conc. [ng/μl]	Molarity [nmol/l]	Observations
1	50	8.30	251.5	Lower Marker
2	17,000	4.20	0.4	Upper Marker

Assay Class: DNA 12000
Data Path: C:\...ents and Settings\Bioanalyzer\2013-12-04\2013-12-04_004.xad

Created: 12/4/2013 3:24:40 PM
Modified: 12/4/2013 3:54:02 PM

Electropherogram Summary Continued ...

JA65 gTube 5150 rpm 1:3



Overall Results for sample 5 : JA65 gTube 5150 rpm 1:3

Number of peaks found: 0

Peak table for sample 5 : JA65 gTube 5150 rpm 1:3

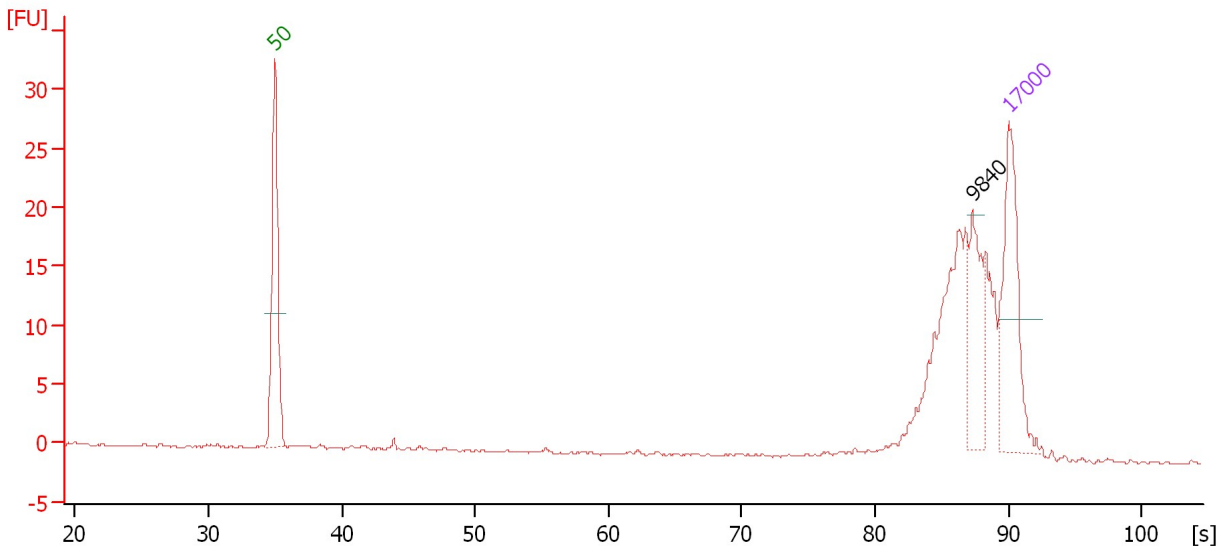
Peak	Size [bp]	Conc. [ng/μl]	Molarity [nmol/l]	Observations
1	50	8.30	251.5	Lower Marker
2	17,000	4.20	0.4	Upper Marker

Assay Class: DNA 12000
 Data Path: C:\...ents and Settings\Bioanalyzer\2013-12-04\2013-12-04_004.xad

Created: 12/4/2013 3:24:40 PM
 Modified: 12/4/2013 3:54:02 PM

Electropherogram Summary Continued ...

JA69 gTube 5150 rpm 1:2



Overall Results for sample 6 : JA69 gTube 5150 rpm 1:2

Number of peaks found: 1

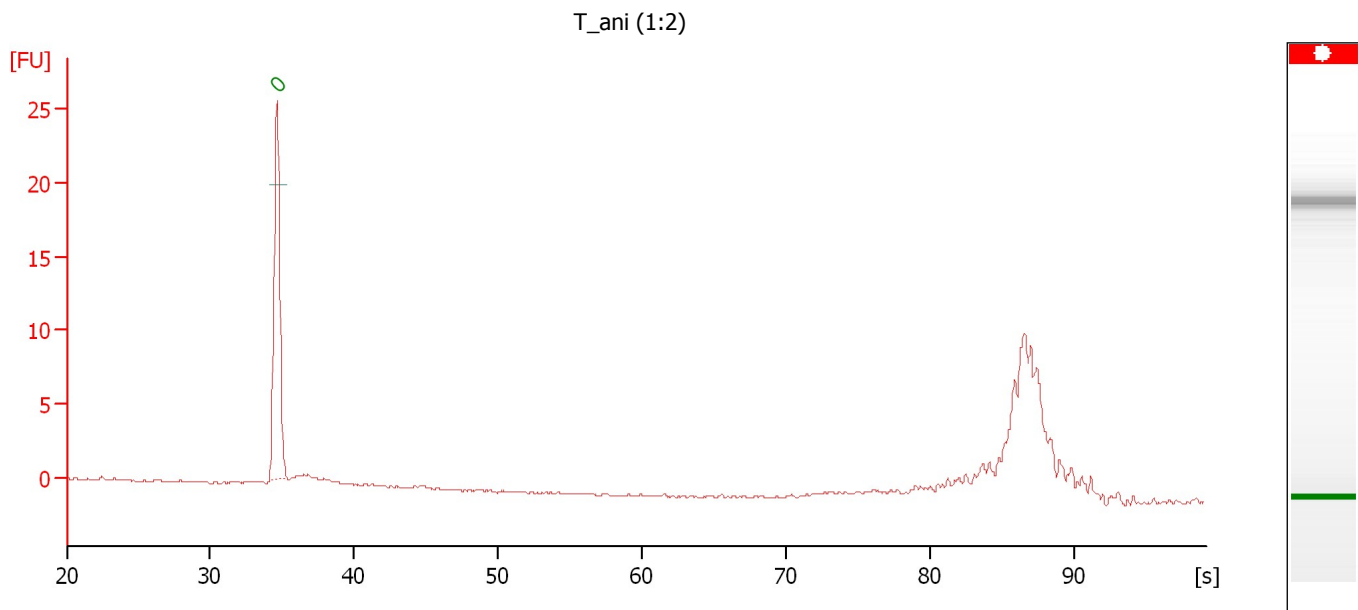
Peak table for sample 6 : JA69 gTube 5150 rpm 1:2

Peak	Size [bp]	Conc. [ng/μl]	Molarity [nmol/l]	Observations
1	50	8.30	251.5	Lower Marker
2	9,840	2.84	0.4	
3	17,000	4.20	0.4	Upper Marker

Assay Class: DNA 12000
 Data Path: C:\...ents and Settings\Bioanalyzer\2013-12-04\2013-12-04_004.xad

Created: 12/4/2013 3:24:40 PM
 Modified: 12/4/2013 3:54:02 PM

Electropherogram Summary Continued ...



Overall Results for sample 7 : T_ani (1:2)

Number of peaks found: 0

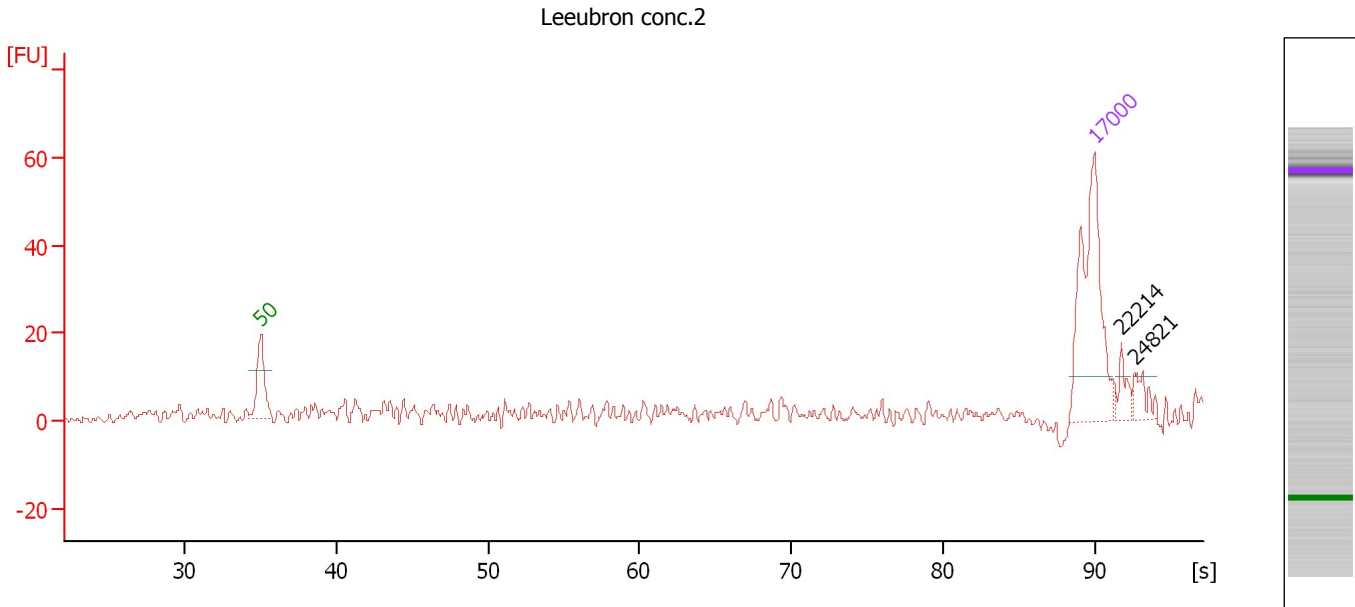
Peak table for sample 7 : T_ani (1:2)

Peak	Size [bp]	Conc. [ng/μl]	Molarity [nmol/l]	Observations
1	0	0.00	0.0	Lower Marker

Assay Class: DNA 12000
 Data Path: C:\...ents and Settings\Bioanalyzer\2013-12-04\2013-12-04_004.xad

Created: 12/4/2013 3:24:40 PM
 Modified: 12/4/2013 3:54:02 PM

Electropherogram Summary Continued ...



Setpoint Deviations for sample 8 : Leeubron conc.2

Height Threshold [FU] : 10

Overall Results for sample 8 : Leeubron conc.2

Number of peaks found: 0

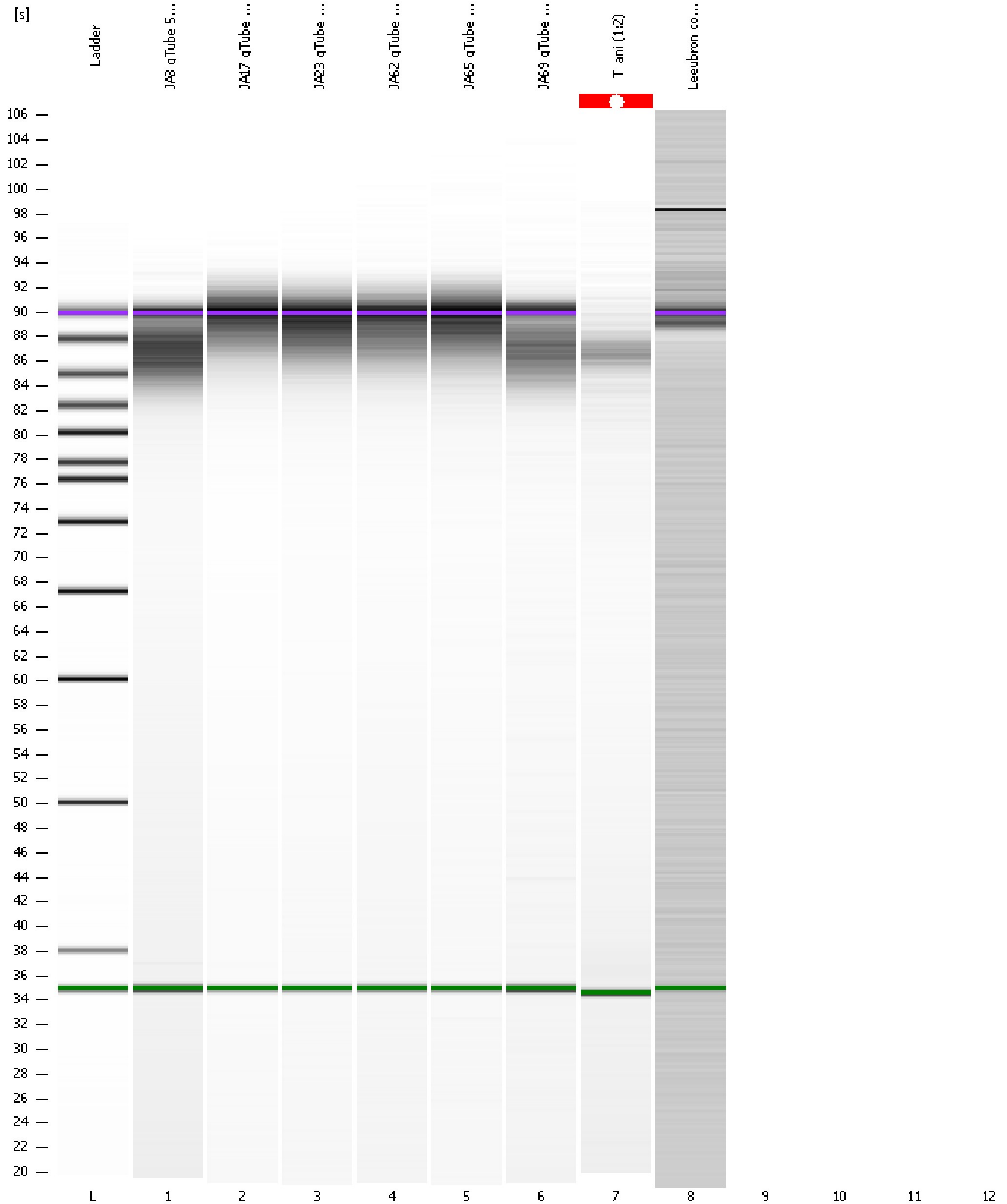
Peak table for sample 8 : Leeubron conc.2

Peak	Size [bp]	Conc. [ng/μl]	Molarity [nmol/l]	Observations
1	50	8.30	251.5	Lower Marker
2	17,000	4.20	0.4	Upper Marker
3	22,214	0.00	0.0	
4	24,821	0.00	0.0	
5	41,278	0.00	0.0	

Assay Class: DNA 12000
Data Path: C:\...ents and Settings\Bioanalyzer\2013-12-04\2013-12-04_004.xad

Created: 12/4/2013 3:24:40 PM
Modified: 12/4/2013 3:54:02 PM

Gel Image



Assay Class: DNA 12000
Data Path: C:\...ents and Settings\Bioanalyzer\2013-12-04\2013-12-04_004.xad

Created: 12/4/2013 3:24:40 PM
Modified: 12/4/2013 3:54:02 PM

Invalid Samples

Sample 9 has not been run, no results available.

Sample 10 has not been run, no results available.

Sample 11 has not been run, no results available.

Sample 12 has not been run, no results available.