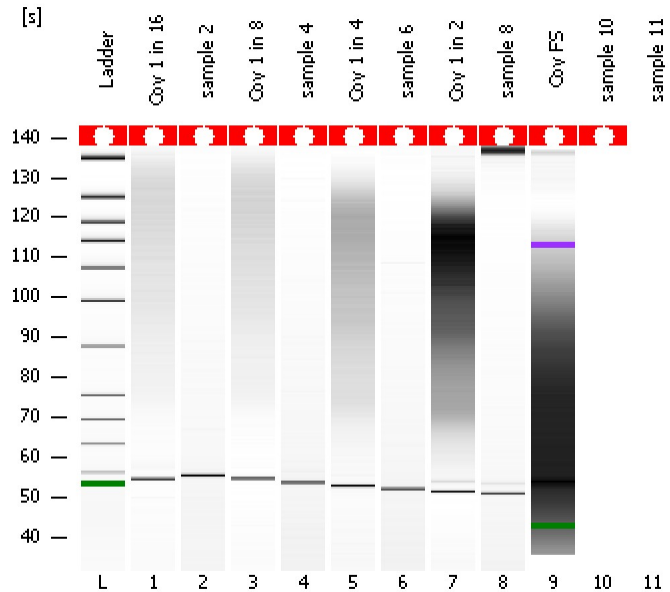


Assay Class: High Sensitivity DNA Assay
Data Path: C:\...ents and Settings\Bioanalyzer\2013-12-05\2013-12-05_001.xad

Created: 12/5/2013 9:53:50 AM
Modified: 12/5/2013 10:29:57 AM

Electrophoresis File Run Summary



Instrument Information:

Instrument Name: DE13701086 Firmware: C.01.069
Serial#: DE13701086 Type: G2938B

Assay Information:

Assay Origin Path: C:\Program Files\Agilent\2100 bioanalyzer\2100 expert\assays\dsDNA\High Sensitivity DNA.xsy
Assay Class: High Sensitivity DNA Assay
Version: 1.03
Assay Comments: Copyright © 2003-2010 Agilent Technologies

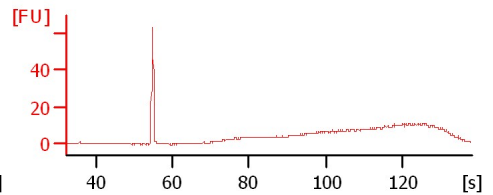
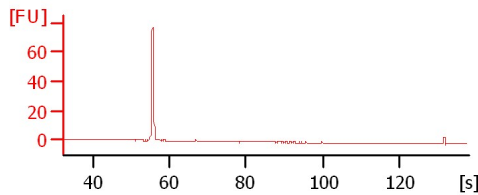
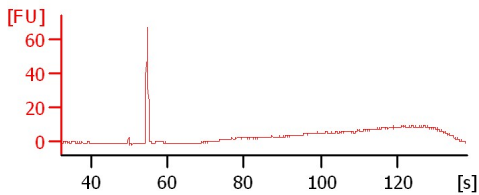
Chip Information:

Chip Lot #:
Reagent Kit Lot #:
Chip Comments:

Coy 1 in 16

sample 2

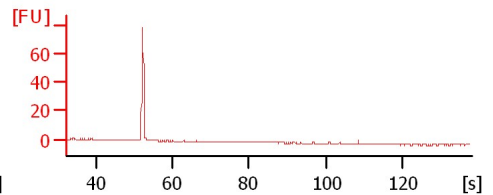
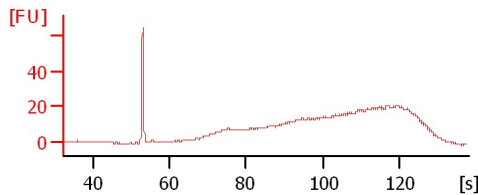
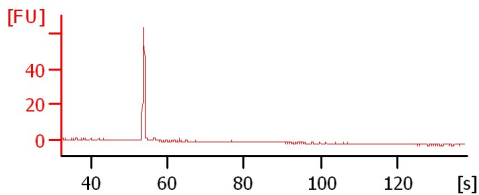
Coy 1 in 8



sample 4

Coy 1 in 4

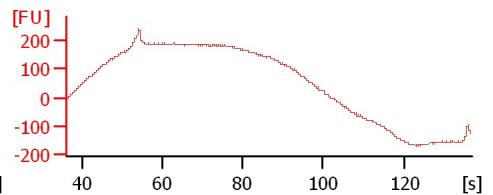
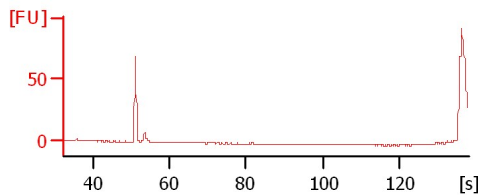
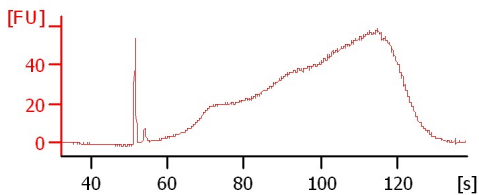
sample 6



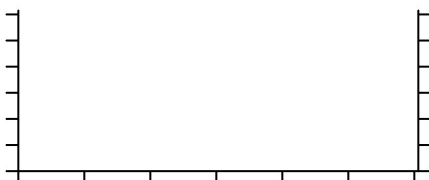
Coy 1 in 2

sample 8

Coy FS



sample 10



Assay Class: High Sensitivity DNA Assay
Data Path: C:\...ents and Settings\Bioanalyzer\2013-12-05\2013-12-05_001.xad

Created: 12/5/2013 9:53:50 AM
Modified: 12/5/2013 10:29:57 AM

Electrophoresis File Run Summary (Chip Summary)

Sample Name	Sample Comment	Rest. Digest	Status	Observation	Result Label	Result Color
Coy 1 in 16		<input type="checkbox"/>	✓			
sample 2		<input type="checkbox"/>	✓			
Coy 1 in 8		<input type="checkbox"/>	✓			
sample 4		<input type="checkbox"/>	✓			
Coy 1 in 4		<input type="checkbox"/>	✓			
sample 6		<input type="checkbox"/>	✓			
Coy 1 in 2		<input type="checkbox"/>	✓			
sample 8		<input type="checkbox"/>	✓			
Coy FS		<input type="checkbox"/>	✓			
sample 10		<input type="checkbox"/>	✗			
sample 11		<input type="checkbox"/>	✗			
Ladder		<input type="checkbox"/>	✓			

Chip Lot #

Reagent Kit Lot #

Chip Comments :

Assay Class: High Sensitivity DNA Assay
Data Path: C:\...ents and Settings\Bioanalyzer\2013-12-05\2013-12-05_001.xad

Created: 12/5/2013 9:53:50 AM
Modified: 12/5/2013 10:29:57 AM

Electrophoresis Assay Details

General Analysis Settings

Number of Available Sample and Ladder Wells (Max.) : 12
Minimum Visible Range [s] : 32
Maximum Visible Range [s] : 138
Start Analysis Time Range [s] : 33
End Analysis Time Range [s] : 137.5
Ladder Concentration [pg/μl] : 1950
Uses Standard Area for Ladder Fragments
Lower Marker Concentration [pg/μl] : 125
Upper Marker Concentration [pg/μl] : 75
Used Upper Marker for Quantitation
Standard Curve Fit is Point to Point
Show Data Aligned to Lower and Upper Marker

Integrator Settings

Integration Start Time [s] : 33.05
Integration End Time [s] : 137
Slope Threshold : 0.8
Height Threshold [FU] : 5
Area Threshold : 0.1
Width Threshold [s] : 0.6
Baseline Plateau [s] : 0.5

Filter Settings

Filter Width [s] : 0.5
Polynomial Order : 4

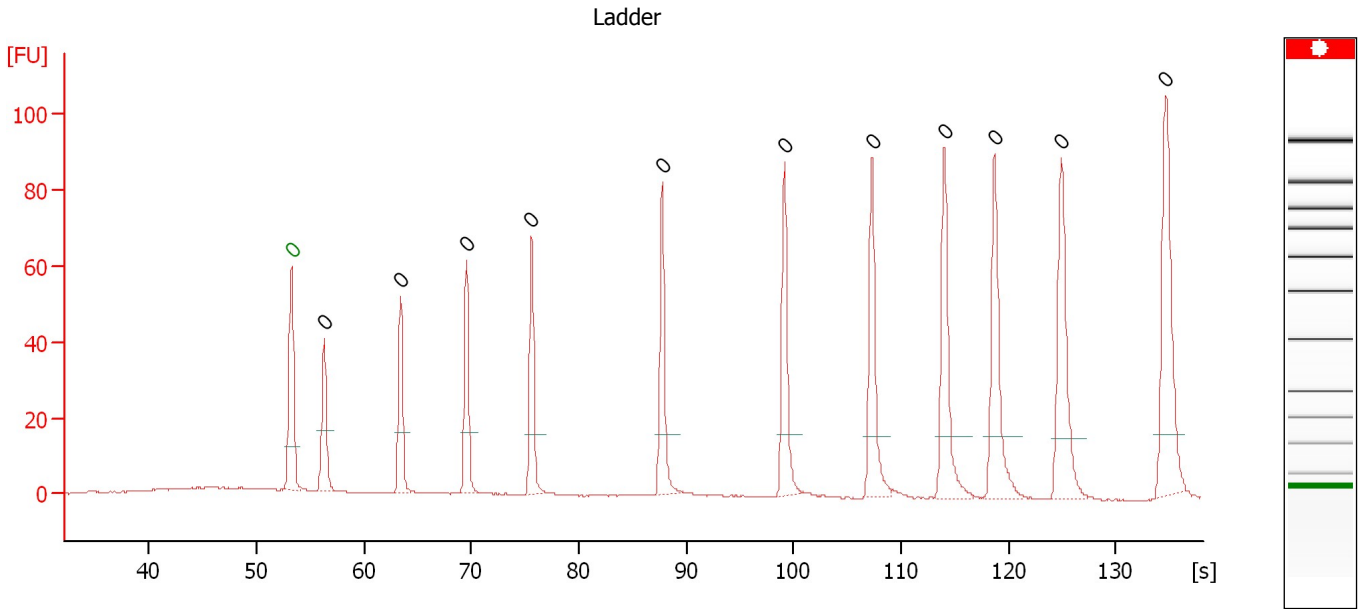
Ladder

Ladder Peak	Size	Area
1	35	160
2	50	210
3	100	208
4	150	221
5	200	242
6	300	270
7	400	305
8	500	306
9	600	336
10	700	321
11	1000	366
12	2000	413
13	3000	411
14	7000	400
15	10380	214

Assay Class: High Sensitivity DNA Assay
 Data Path: C:\...ents and Settings\Bioanalyzer\2013-12-05\2013-12-05_001.xad

Created: 12/5/2013 9:53:50 AM
 Modified: 12/5/2013 10:29:57 AM

Electropherogram Summary



Overall Results for Ladder

Noise: 0.1

Peak table for Ladder

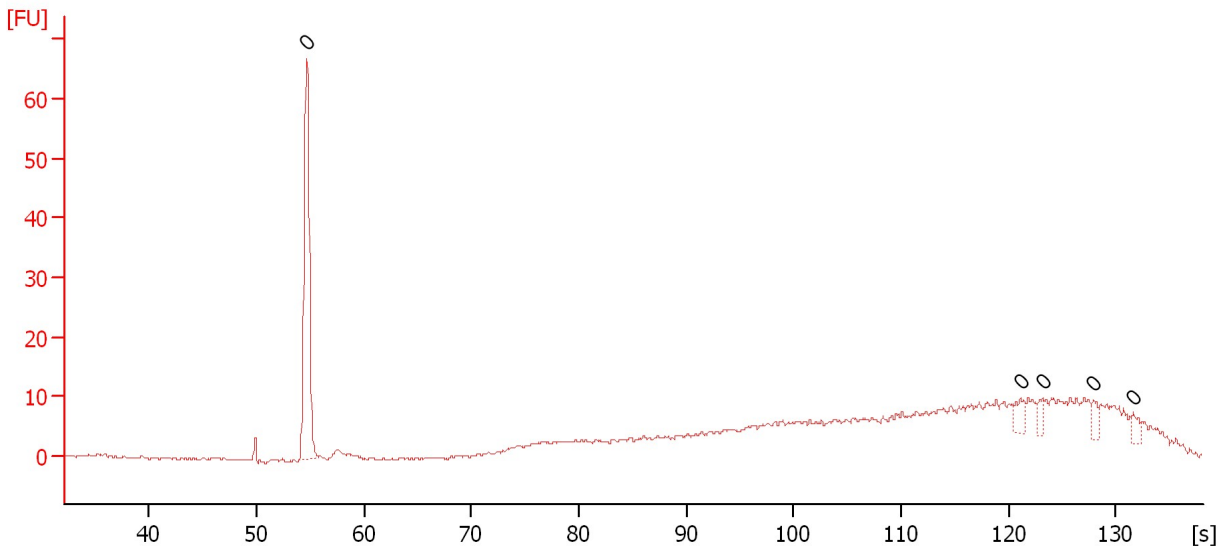
Peak	Aligned Migration Time [s]	Size [bp]	Conc. [pg/μl]	Molarity [pmol/l]	Observations
1	53.25	0	0.00	0.0	Lower Marker
2	56.30	0	0.00	0.0	Ladder Peak
3	63.40	0	0.00	0.0	Ladder Peak
4	69.55	0	0.00	0.0	Ladder Peak
5	75.60	0	0.00	0.0	Ladder Peak
6	87.75	0	0.00	0.0	Ladder Peak
7	99.15	0	0.00	0.0	Ladder Peak
8	107.30	0	0.00	0.0	Ladder Peak
9	114.05	0	0.00	0.0	Ladder Peak
10	118.70	0	0.00	0.0	Ladder Peak
11	124.95	0	0.00	0.0	Ladder Peak
12	134.65	0	0.00	0.0	Ladder Peak

Assay Class: High Sensitivity DNA Assay
Data Path: C:\...ents and Settings\Bioanalyzer\2013-12-05\2013-12-05_001.xad

Created: 12/5/2013 9:53:50 AM
Modified: 12/5/2013 10:29:57 AM

Electropherogram Summary Continued ...

Coy 1 in 16



Overall Results for sample 1 : Coy 1 in 16

Number of peaks found: 0 Noise: 0.2

Peak table for sample 1 : Coy 1 in 16

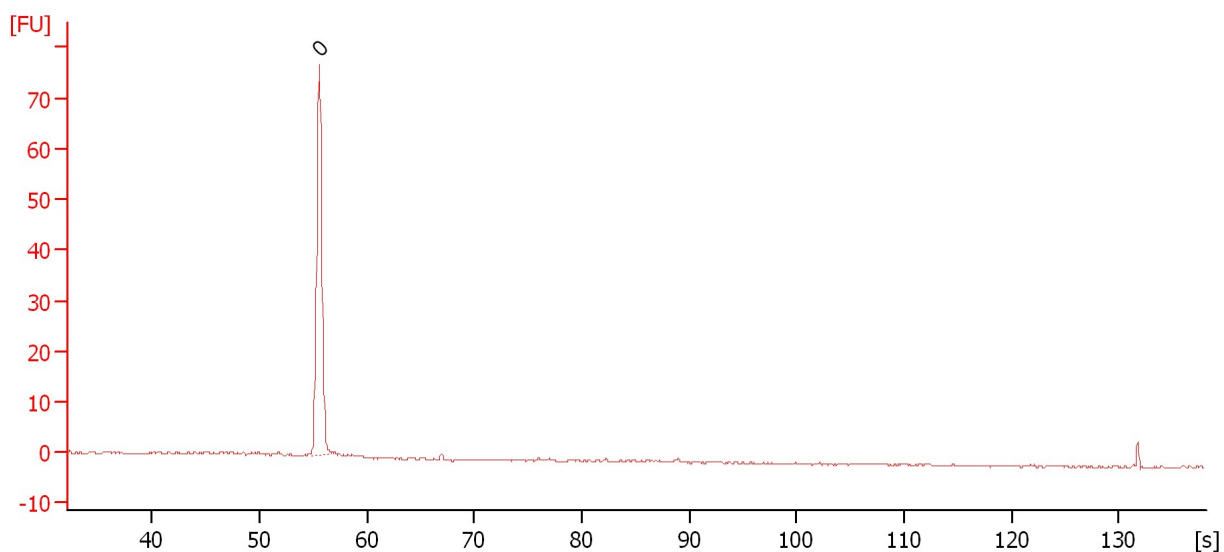
Peak	Aligned Migration Time [s]	Size [bp]	Conc. [pg/μl]	Molarity [pmol/l]	Observations
1	54.70	0	0.00	0.0	
2	121.15	0	0.00	0.0	
3	123.15	0	0.00	0.0	
4	127.90	0	0.00	0.0	
5	131.60	0	0.00	0.0	

Assay Class: High Sensitivity DNA Assay
 Data Path: C:\...ents and Settings\Bioanalyzer\2013-12-05\2013-12-05_001.xad

Created: 12/5/2013 9:53:50 AM
 Modified: 12/5/2013 10:29:57 AM

Electropherogram Summary Continued ...

sample 2



Overall Results for sample 2 : sample 2

Number of peaks found: 0 Noise: 0.2

Peak table for sample 2 : sample 2

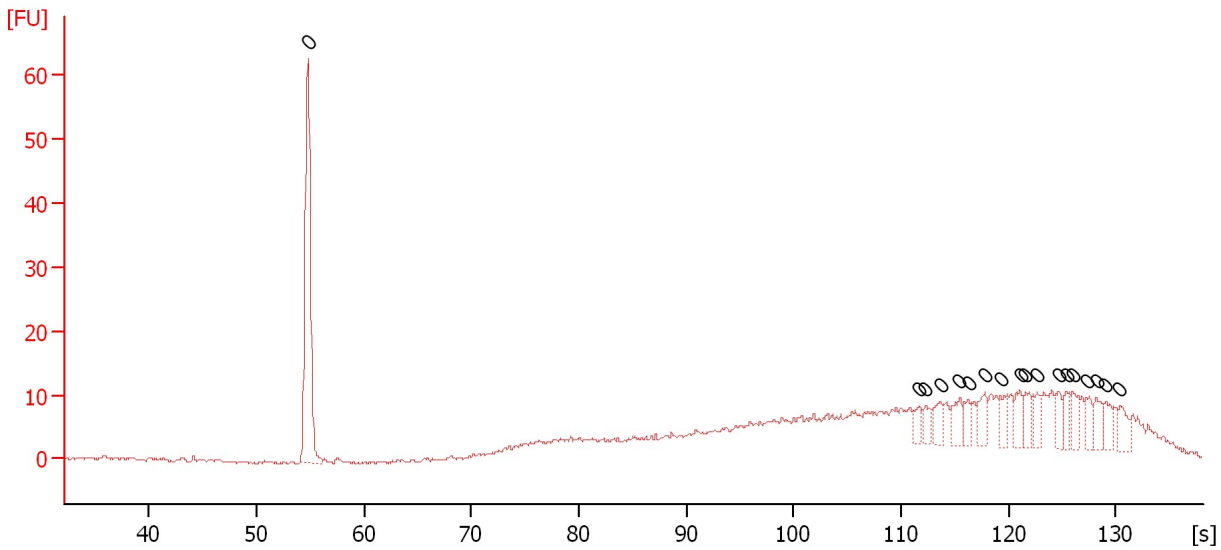
Peak	Aligned Migration Time [s]	Size [bp]	Conc. [pg/μl]	Molarity [pmol/l]	Observations
1	55.55	0	0.00	0.0	

Assay Class: High Sensitivity DNA Assay
 Data Path: C:\...ents and Settings\Bioanalyzer\2013-12-05\2013-12-05_001.xad

Created: 12/5/2013 9:53:50 AM
 Modified: 12/5/2013 10:29:57 AM

Electropherogram Summary Continued ...

Coy 1 in 8



Overall Results for sample 3 : Coy 1 in 8

Number of peaks found: 0 Noise: 0.3

Peak table for sample 3 : Coy 1 in 8

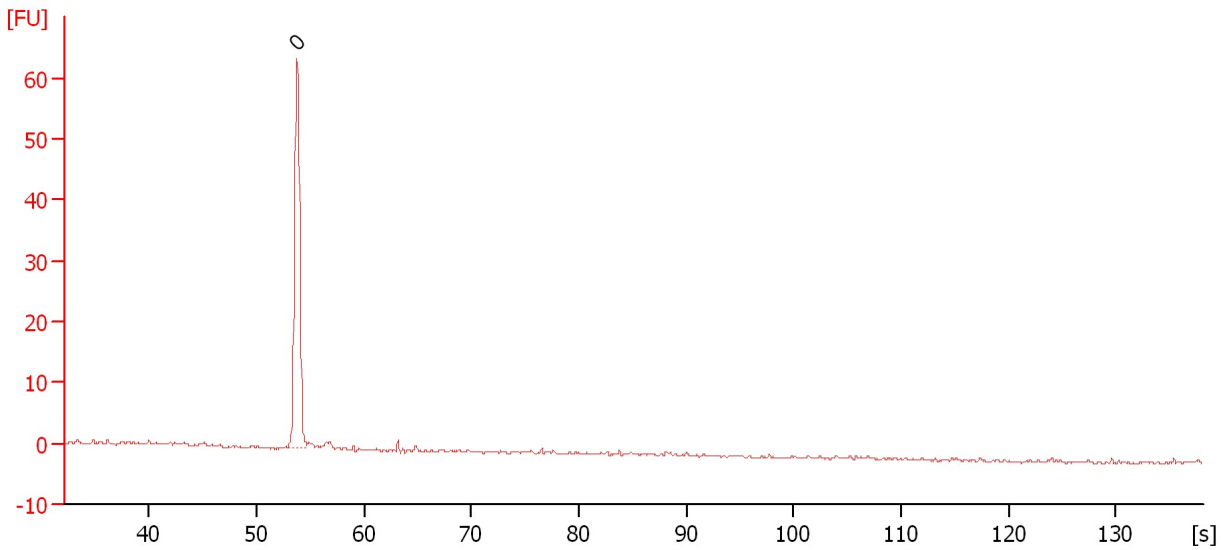
Peak	Aligned Migration Time [s]	Size [bp]	Conc. [pg/μl]	Molarity [pmol/l]	Observations
1	54.80	0	0.00	0.0	
2	111.75	0	0.00	0.0	
3	112.25	0	0.00	0.0	
4	113.65	0	0.00	0.0	
5	115.45	0	0.00	0.0	
6	116.25	0	0.00	0.0	
7	117.80	0	0.00	0.0	
8	119.25	0	0.00	0.0	
9	121.10	0	0.00	0.0	
10	121.60	0	0.00	0.0	
11	122.70	0	0.00	0.0	
12	124.70	0	0.00	0.0	
13	125.45	0	0.00	0.0	
14	125.95	0	0.00	0.0	
15	127.25	0	0.00	0.0	
16	128.20	0	0.00	0.0	
17	129.05	0	0.00	0.0	
18	130.40	0	0.00	0.0	

Assay Class: High Sensitivity DNA Assay
Data Path: C:\...ents and Settings\Bioanalyzer\2013-12-05\2013-12-05_001.xad

Created: 12/5/2013 9:53:50 AM
Modified: 12/5/2013 10:29:57 AM

Electropherogram Summary Continued ...

sample 4



Overall Results for sample 4 : sample 4

Number of peaks found: 0 Noise: 0.3

Peak table for sample 4 : sample 4

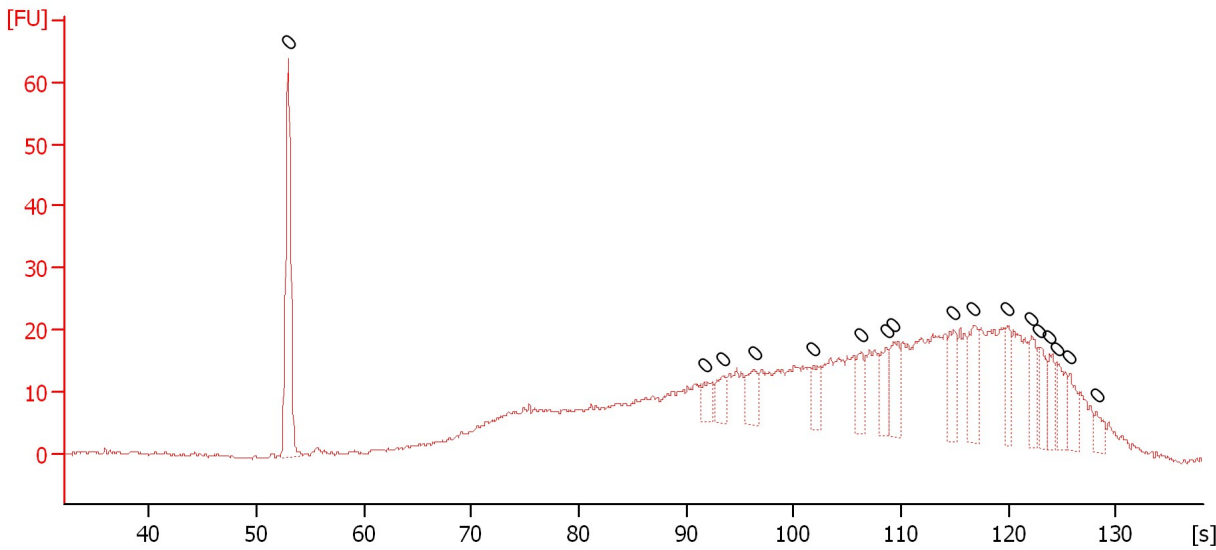
Peak	Aligned Migration Time [s]	Size [bp]	Conc. [pg/μl]	Molarity [pmol/l]	Observations
1	53.80	0	0.00	0.0	

Assay Class: High Sensitivity DNA Assay
 Data Path: C:\...ents and Settings\Bioanalyzer\2013-12-05\2013-12-05_001.xad

Created: 12/5/2013 9:53:50 AM
 Modified: 12/5/2013 10:29:57 AM

Electropherogram Summary Continued ...

Coy 1 in 4



Overall Results for sample 5 : Coy 1 in 4

Number of peaks found: 0 Noise: 0.2

Peak table for sample 5 : Coy 1 in 4

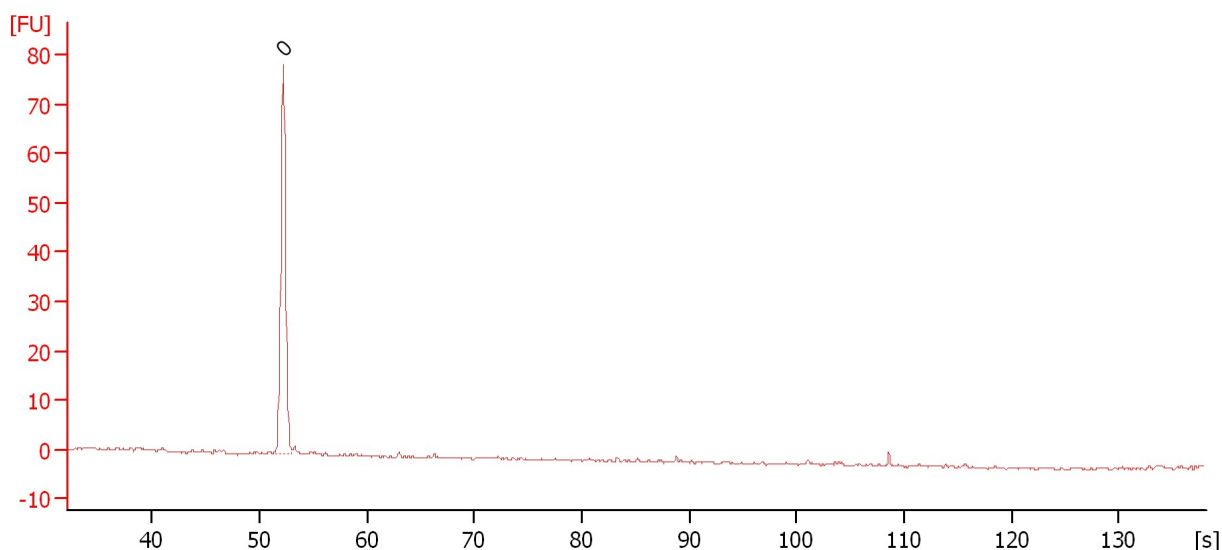
Peak	Aligned Migration Time [s]	Size [bp]	Conc. [pg/μl]	Molarity [pmol/l]	Observations
1	52.95	0	0.00	0.0	
2	91.65	0	0.00	0.0	
3	93.40	0	0.00	0.0	
4	96.35	0	0.00	0.0	
5	101.85	0	0.00	0.0	
6	106.30	0	0.00	0.0	
7	108.65	0	0.00	0.0	
8	109.30	0	0.00	0.0	
9	114.90	0	0.00	0.0	
10	116.70	0	0.00	0.0	
11	119.95	0	0.00	0.0	
12	122.20	0	0.00	0.0	
13	122.95	0	0.00	0.0	
14	123.85	0	0.00	0.0	
15	124.60	0	0.00	0.0	
16	125.70	0	0.00	0.0	
17	128.25	0	0.00	0.0	

Assay Class: High Sensitivity DNA Assay
 Data Path: C:\...ents and Settings\Bioanalyzer\2013-12-05\2013-12-05_001.xad

Created: 12/5/2013 9:53:50 AM
 Modified: 12/5/2013 10:29:57 AM

Electropherogram Summary Continued ...

sample 6



Overall Results for sample 6 : sample 6

Number of peaks found: 0 Noise: 0.3

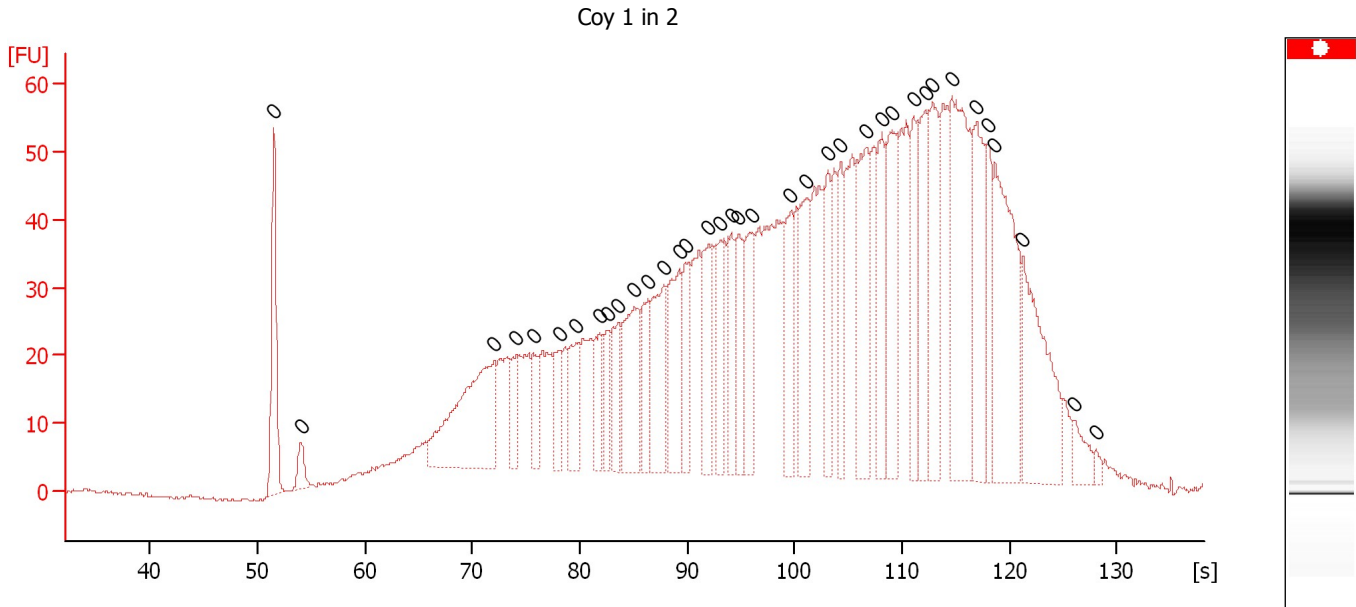
Peak table for sample 6 : sample 6

Peak	Aligned Migration Time [s]	Size [bp]	Conc. [pg/μl]	Molarity [pmol/l]	Observations
1	52.20	0	0.00	0.0	

Assay Class: High Sensitivity DNA Assay
 Data Path: C:\...ents and Settings\Bioanalyzer\2013-12-05\2013-12-05_001.xad

Created: 12/5/2013 9:53:50 AM
 Modified: 12/5/2013 10:29:57 AM

Electropherogram Summary Continued ...



Overall Results for sample 7 : Coy 1 in 2

Number of peaks found: 0 Noise: 0.2

Peak table for sample 7 : Coy 1 in 2

Peak	Aligned Migration Time [s]	Size [bp]	Conc. [pg/μl]	Molarity [pmol/l]	Observations
1	51.50	0	0.00	0.0	
2	54.05	0	0.00	0.0	
3	72.00	0	0.00	0.0	
4	74.05	0	0.00	0.0	
5	75.65	0	0.00	0.0	
6	78.05	0	0.00	0.0	
7	79.70	0	0.00	0.0	
8	81.85	0	0.00	0.0	
9	82.65	0	0.00	0.0	
10	83.60	0	0.00	0.0	
11	85.10	0	0.00	0.0	
12	86.30	0	0.00	0.0	
13	87.85	0	0.00	0.0	
14	89.25	0	0.00	0.0	
15	89.85	0	0.00	0.0	
16	92.00	0	0.00	0.0	
17	93.05	0	0.00	0.0	
18	94.10	0	0.00	0.0	
19	94.80	0	0.00	0.0	
20	96.05	0	0.00	0.0	
21	99.65	0	0.00	0.0	
22	101.05	0	0.00	0.0	
23	103.10	0	0.00	0.0	
24	104.30	0	0.00	0.0	
25	106.70	0	0.00	0.0	
26	108.10	0	0.00	0.0	
27	109.10	0	0.00	0.0	

Assay Class: High Sensitivity DNA Assay
Data Path: C:\...ents and Settings\Bioanalyzer\2013-12-05\2013-12-05_001.xad

Created: 12/5/2013 9:53:50 AM
Modified: 12/5/2013 10:29:57 AM

Electropherogram Summary Continued ...**... Peak table for sample 7 : Coy 1 in 2**

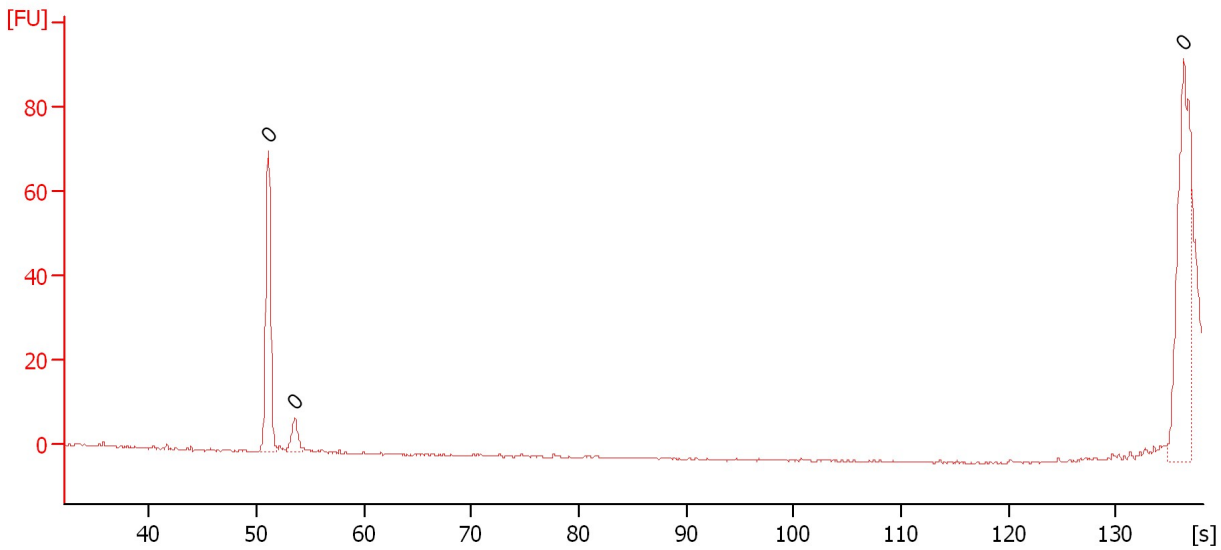
Peak	Aligned Migration Time [s]	Size [bp]	Conc. [pg/μl]	Molarity [pmol/l]	Observations
28	111.05	0	0.00	0.0	
29	112.15	0	0.00	0.0	
30	112.85	0	0.00	0.0	
31	114.65	0	0.00	0.0	
32	116.90	0	0.00	0.0	
33	118.00	0	0.00	0.0	
34	118.65	0	0.00	0.0	
35	121.25	0	0.00	0.0	
36	126.05	0	0.00	0.0	
37	128.05	0	0.00	0.0	

Assay Class: High Sensitivity DNA Assay
Data Path: C:\...ents and Settings\Bioanalyzer\2013-12-05\2013-12-05_001.xad

Created: 12/5/2013 9:53:50 AM
Modified: 12/5/2013 10:29:57 AM

Electropherogram Summary Continued ...

sample 8



Overall Results for sample 8 : sample 8

Number of peaks found: 0 Noise: 0.2

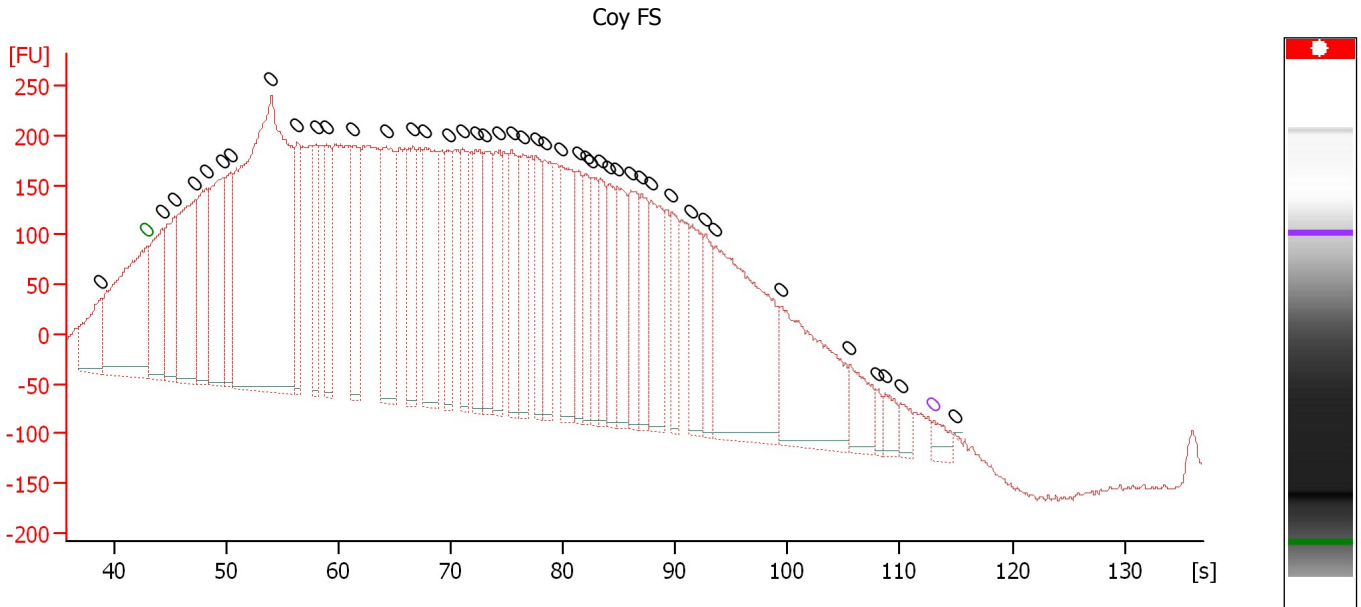
Peak table for sample 8 : sample 8

Peak	Aligned Migration Time [s]	Size [bp]	Conc. [pg/μl]	Molarity [pmol/l]	Observations
1	51.10	0	0.00	0.0	
2	53.55	0	0.00	0.0	
3	136.30	0	0.00	0.0	

Assay Class: High Sensitivity DNA Assay
 Data Path: C:\...ents and Settings\Bioanalyzer\2013-12-05\2013-12-05_001.xad

Created: 12/5/2013 9:53:50 AM
 Modified: 12/5/2013 10:29:57 AM

Electropherogram Summary Continued ...



Overall Results for sample 9 : Coy FS

Number of peaks found: 44 Noise: 2.5

Peak table for sample 9 : Coy FS

Peak	Aligned Migration Time [s]	Size [bp]	Conc. [pg/μl]	Molarity [pmol/l]	Observations
1	38.90	0	0.00	0.0	
2	43.00	0	0.00	0.0	Lower Marker
3	44.29	0	0.00	0.0	
4	45.43	0	0.00	0.0	
5	47.20	0	0.00	0.0	
6	48.25	0	0.00	0.0	
7	49.73	0	0.00	0.0	
8	50.44	0	0.00	0.0	
9	54.02	0	0.00	0.0	
10	56.36	0	0.00	0.0	
11	57.98	0	0.00	0.0	
12	58.99	0	0.00	0.0	
13	61.32	0	0.00	0.0	
14	64.23	0	0.00	0.0	
15	66.67	0	0.00	0.0	
16	67.72	0	0.00	0.0	
17	69.77	0	0.00	0.0	
18	71.10	0	0.00	0.0	
19	72.25	0	0.00	0.0	
20	73.11	0	0.00	0.0	
21	74.30	0	0.00	0.0	
22	75.45	0	0.00	0.0	
23	76.45	0	0.00	0.0	
24	77.59	0	0.00	0.0	
25	78.41	0	0.00	0.0	
26	79.79	0	0.00	0.0	
27	81.36	0	0.00	0.0	

Assay Class: High Sensitivity DNA Assay
Data Path: C:\...ents and Settings\Bioanalyzer\2013-12-05\2013-12-05_001.xad

Created: 12/5/2013 9:53:50 AM
Modified: 12/5/2013 10:29:57 AM

Electropherogram Summary Continued ...

... Peak table for sample 9 :

Coy FS

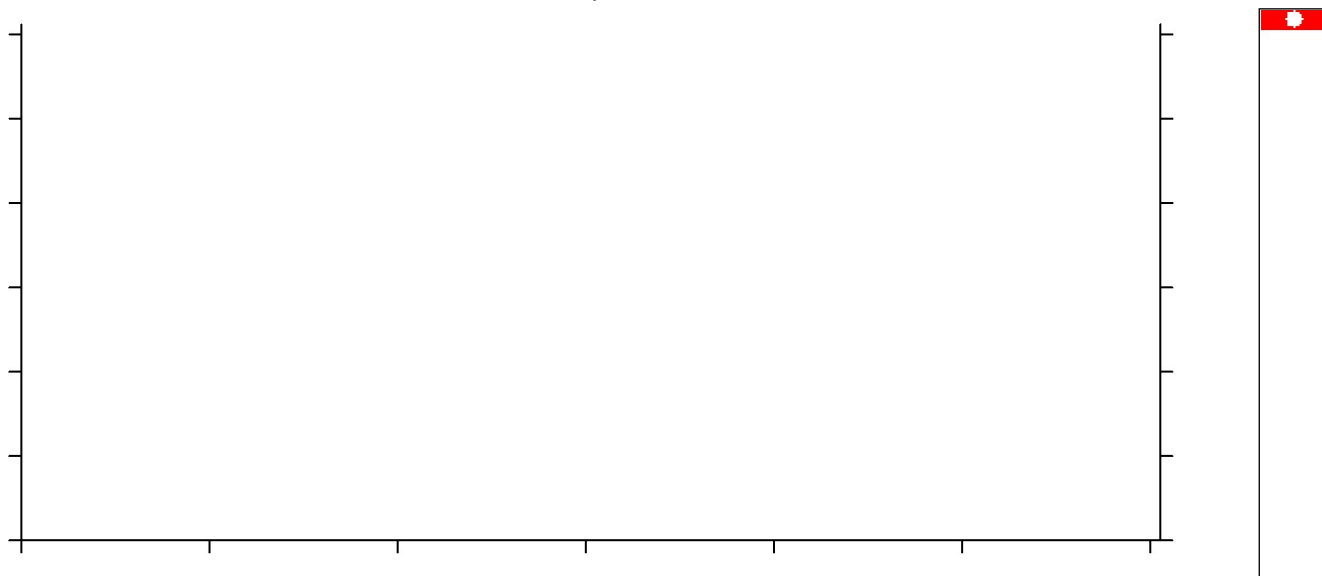
Peak	Aligned Migration Time [s]	Size [bp]	Conc. [pg/ μ l]	Molarity [pmol/l]	Observations
28	82.08	0	0.00	0.0	
29	82.56	0	0.00	0.0	
30	83.32	0	0.00	0.0	
31	84.08	0	0.00	0.0	
32	84.85	0	0.00	0.0	
33	86.04	0	0.00	0.0	
34	86.99	0	0.00	0.0	
35	87.85	0	0.00	0.0	
36	89.67	0	0.00	0.0	
37	91.34	0	0.00	0.0	
38	92.63	0	0.00	0.0	
39	93.58	0	0.00	0.0	
40	99.40	0	0.00	0.0	
41	105.51	0	0.00	0.0	
42	107.89	0	0.00	0.0	
43	108.71	0	0.00	0.0	
44	110.09	0	0.00	0.0	
45	113.00	0	0.00	0.0	Upper Marker
46	114.91	0	0.00	0.0	

Assay Class: High Sensitivity DNA Assay
Data Path: C:\...ents and Settings\Bioanalyzer\2013-12-05\2013-12-05_001.xad

Created: 12/5/2013 9:53:50 AM
Modified: 12/5/2013 10:29:57 AM

Electropherogram Summary Continued ...

sample 10



Setpoint Deviations for sample 10 : sample 10

End Analysis Time Range [s] : 5.35

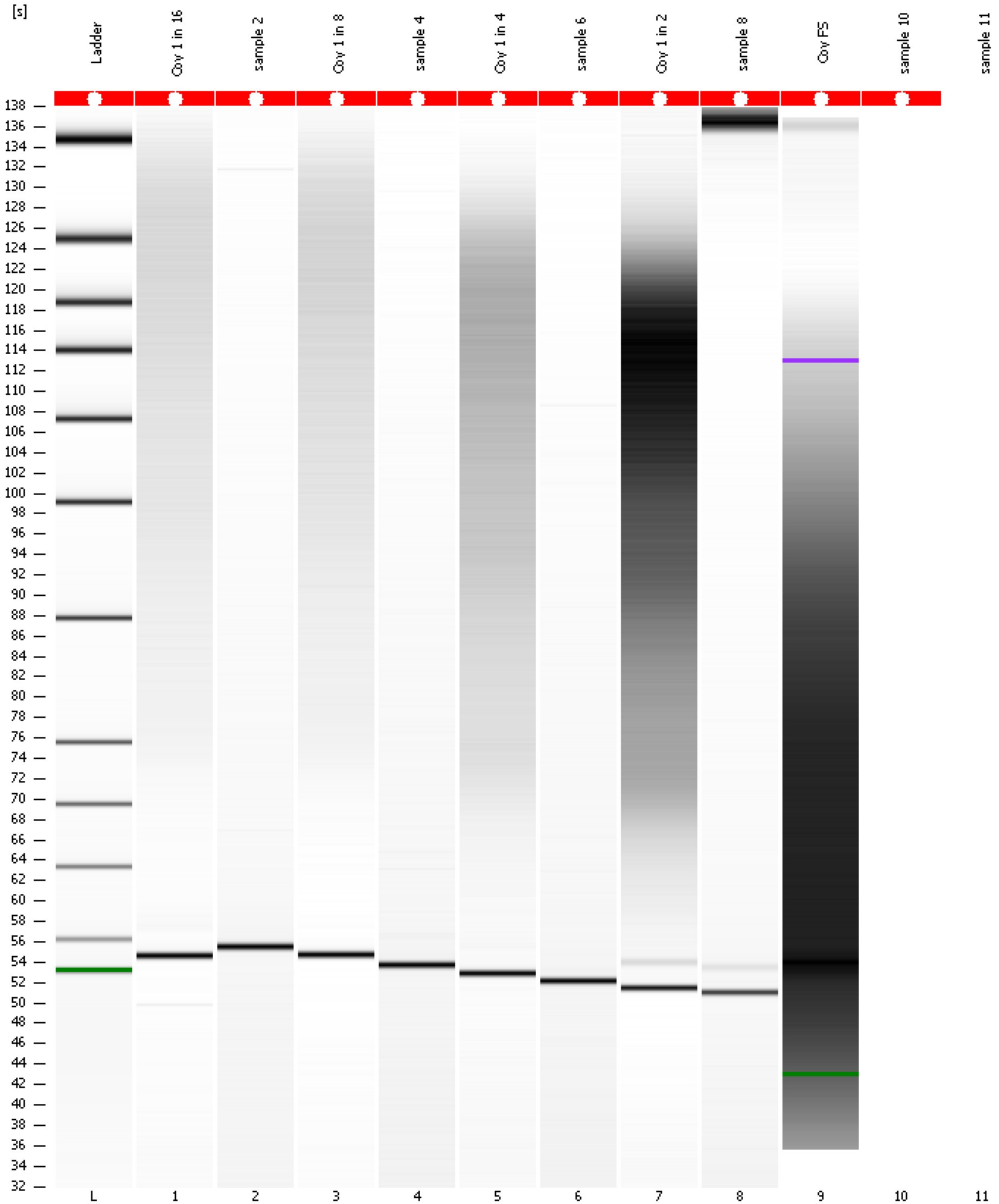
Overall Results for sample 10 : sample 10

Noise: 5.0

Assay Class: High Sensitivity DNA Assay
Data Path: C:\...ents and Settings\Bioanalyzer\2013-12-05\2013-12-05_001.xad

Created: 12/5/2013 9:53:50 AM
Modified: 12/5/2013 10:29:57 AM

Gel Image



Assay Class: High Sensitivity DNA Assay
Data Path: C:\...ents and Settings\Bioanalyzer\2013-12-05\2013-12-05_001.xad

Created: 12/5/2013 9:53:50 AM
Modified: 12/5/2013 10:29:57 AM

Invalid Samples

Sample 11 has not been run, no results available.