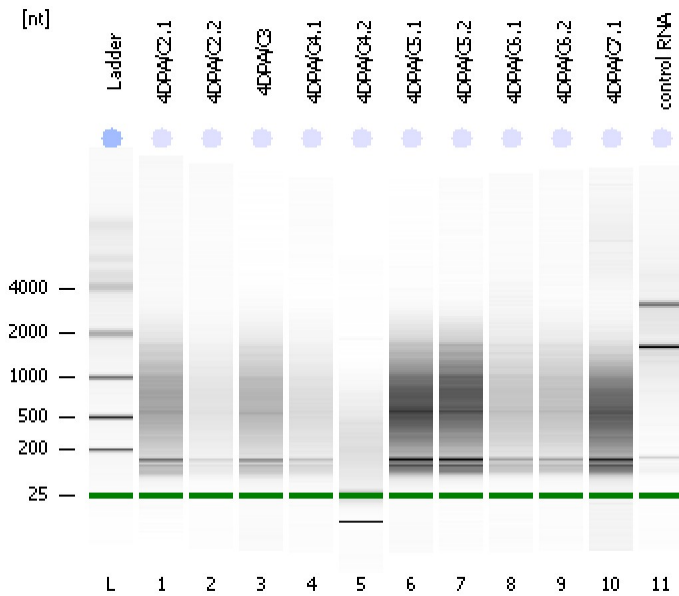


Assay Class: Eukaryote Total RNA Pico
Data Path: C:\...ents and Settings\Bioanalyzer\2013-12-05\2013-12-05_002.xad

Created: 12/5/2013 10:55:30 AM
Modified: 12/5/2013 11:18:24 AM

Electrophoresis File Run Summary



Instrument Information:

Instrument Name: DE13701086 Firmware: C.01.069
Serial#: DE13701086 Type: G2938B

Assay Information:

Assay Origin Path: C:\Program Files\Agilent\2100 bioanalyzer\2100 expert\assays\RNA\Eukaryote Total RNA Pico Series II.xsy

Assay Class: Eukaryote Total RNA Pico

Version: 2.6

Assay Comments: Total RNA Analysis pg sensitivity (Eukaryote)

© Copyright 2003 - 2009 Agilent Technologies, Inc.

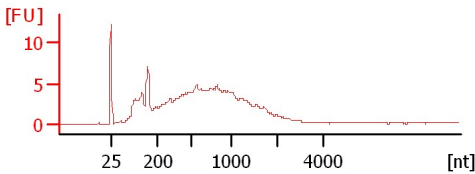
Chip Information:

Chip Lot #:

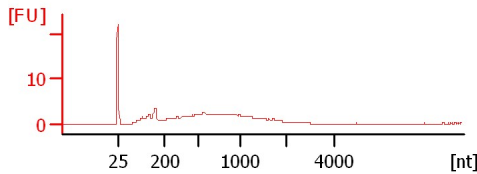
Reagent Kit Lot #:

Chip Comments:

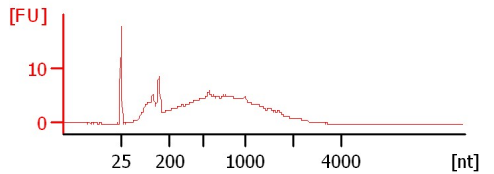
4DPA/C2.1
RIN: 2.20



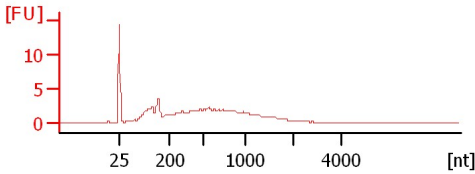
4DPA/C2.2
RIN: 1.60



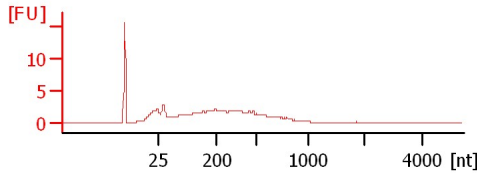
4DPA/C3
RIN: 2.40



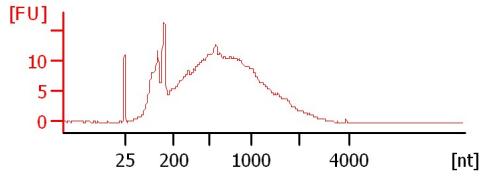
4DPA/C4.1
RIN: 2.10



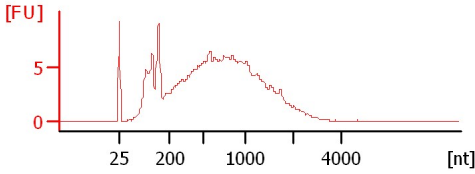
4DPA/C4.2
RIN: 2.40



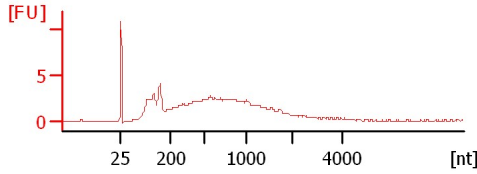
4DPA/C5.1
RIN: 2



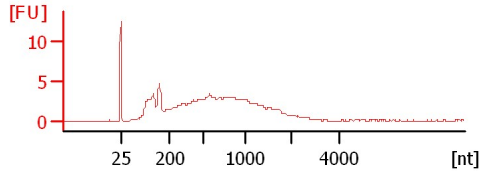
4DPA/C5.2
RIN: 2.20



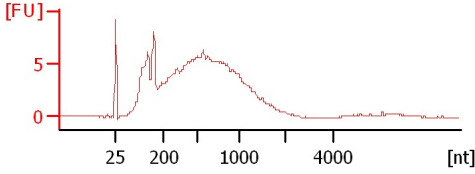
4DPA/C6.1
RIN: 2.30



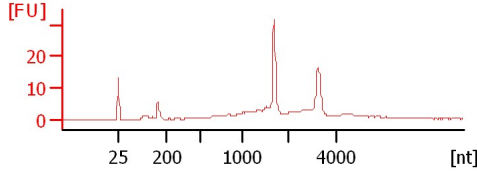
4DPA/C6.2
RIN: 2.30



4DPA/C7.1
RIN: 2.20



control RNA
RIN: 7.50



Assay Class: Eukaryote Total RNA Pico
 Data Path: C:\...ents and Settings\Bioanalyzer\2013-12-05\2013-12-05_002.xad

Created: 12/5/2013 10:55:30 AM
 Modified: 12/5/2013 11:18:24 AM

Electrophoresis File Run Summary (Chip Summary)

Sample Name	Sample Comment	Status	Result Label	Result Color
4DPA/C2.1		✓	RIN: 2.20	
4DPA/C2.2		✓	RIN: 1.60	
4DPA/C3		✓	RIN: 2.40	
4DPA/C4.1		✓	RIN: 2.10	
4DPA/C4.2		✓	RIN: 2.40	
4DPA/C5.1		✓	RIN:2	
4DPA/C5.2		✓	RIN: 2.20	
4DPA/C6.1		✓	RIN: 2.30	
4DPA/C6.2		✓	RIN: 2.30	
4DPA/C7.1		✓	RIN: 2.20	
control RNA		✓	RIN: 7.50	
Ladder		✓	All Other Samples	

Chip Lot #

Reagent Kit Lot #

Chip Comments :

Assay Class: Eukaryote Total RNA Pico
Data Path: C:\...ents and Settings\Bioanalyzer\2013-12-05\2013-12-05_002.xad

Created: 12/5/2013 10:55:30 AM
Modified: 12/5/2013 11:18:24 AM

Electrophoresis Assay Details

General Analysis Settings

Number of Available Sample and Ladder Wells (Max.) : 12
Minimum Visible Range [s] : 17
Maximum Visible Range [s] : 70
Start Analysis Time Range [s] : 18
End Analysis Time Range [s] : 69
Ladder Concentration [pg/ μ l] : 1000
Lower Marker Concentration [pg/ μ l] : 0
Upper Marker Concentration [pg/ μ l] : 0
Used Lower Marker for Quantitation
Standard Curve Fit is Logarithmic
Show Data Aligned to Lower Marker

Integrator Settings

Integration Start Time [s] : 18
Integration End Time [s] : 69
Slope Threshold : 0.6
Height Threshold [FU] : 0.5
Area Threshold : 0.2
Width Threshold [s] : 0.3
Baseline Plateau [s] : 6

Filter Settings

Filter Width [s] : 0.5
Polynomial Order : 4

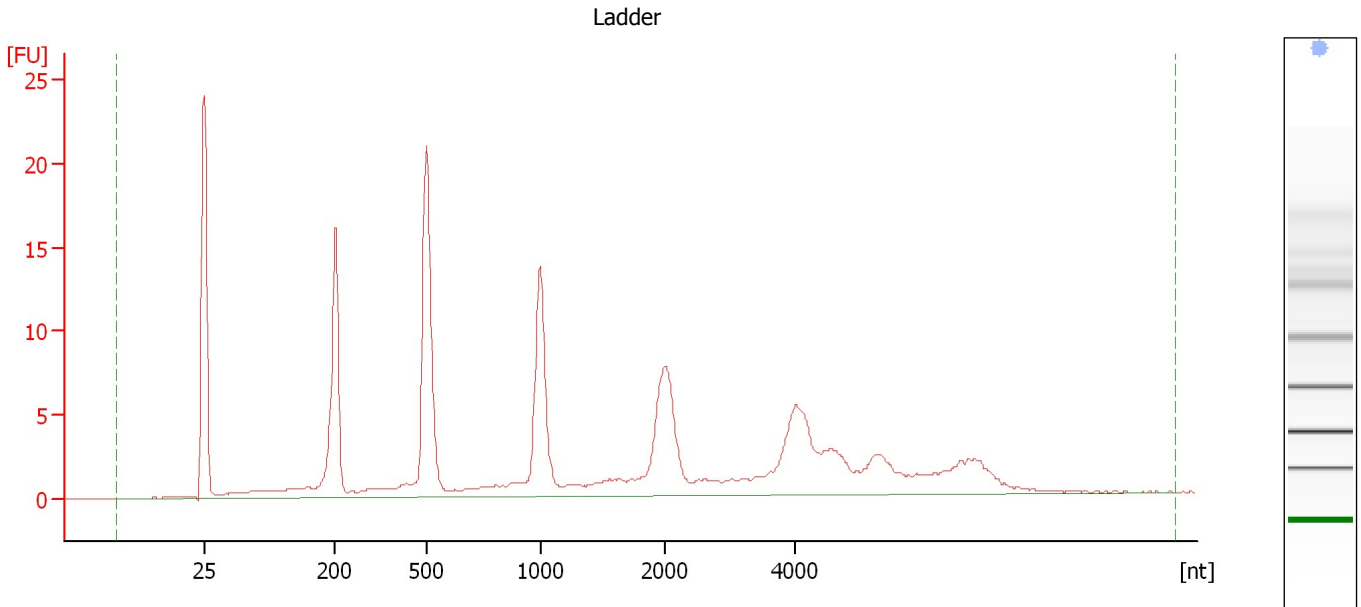
Ladder

Ladder Peak	Size
1	25
2	200
3	500
4	1000
5	2000
6	4000

Assay Class: Eukaryote Total RNA Pico
Data Path: C:\...ents and Settings\Bioanalyzer\2013-12-05\2013-12-05_002.xad

Created: 12/5/2013 10:55:30 AM
Modified: 12/5/2013 11:18:24 AM

Electropherogram Summary



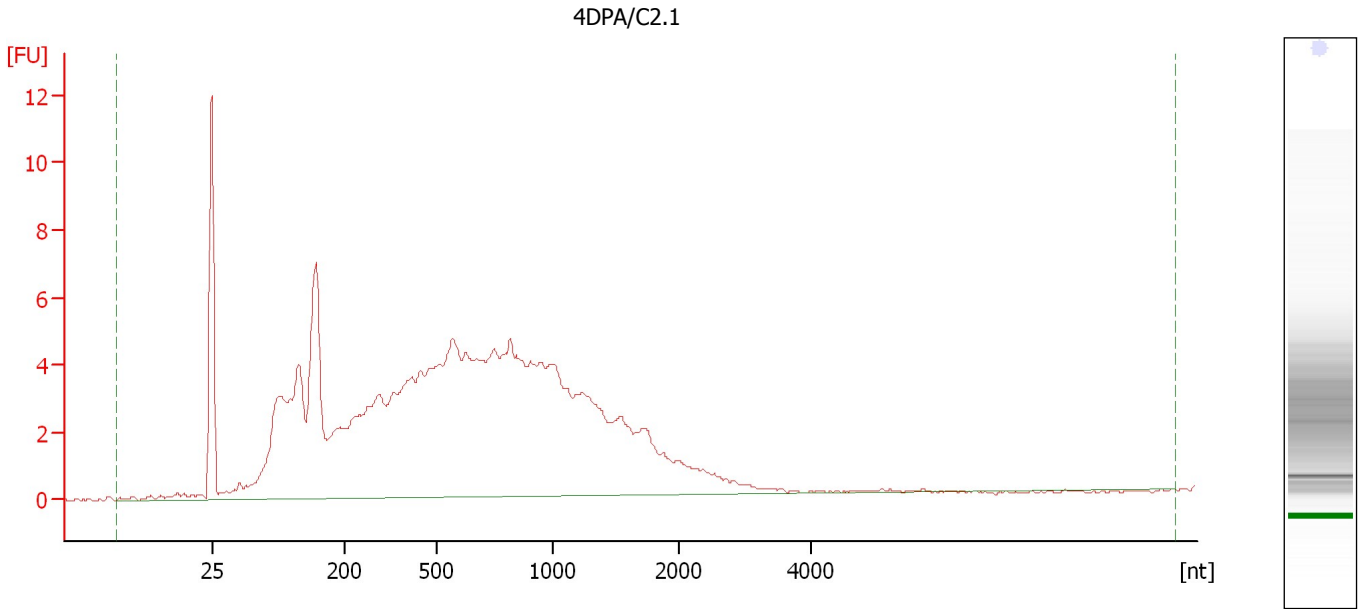
Overall Results for Ladder

RNA Area:	166.6	Result Flagging Color:	
RNA Concentration:	1,000 pg/μl	Result Flagging Label:	All Other Samples

Assay Class: Eukaryote Total RNA Pico
Data Path: C:\...ents and Settings\Bioanalyzer\2013-12-05\2013-12-05_002.xad

Created: 12/5/2013 10:55:30 AM
Modified: 12/5/2013 11:18:24 AM

Electropherogram Summary Continued ...



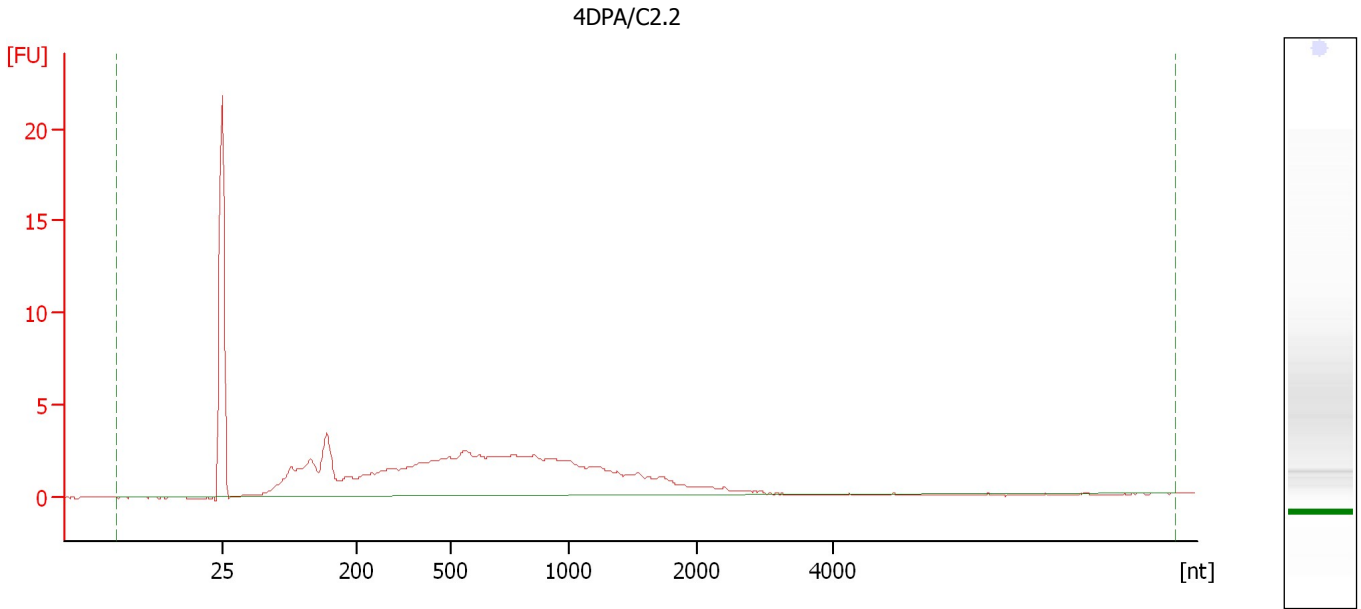
Overall Results for sample 1 : 4DPA/C2.1

RNA Area:	181.8	RNA Integrity Number (RIN):	2.2 (B.02.08)
RNA Concentration:	1,092 pg/μl	Result Flagging Color:	
rRNA Ratio [28s / 18s]:	0.0	Result Flagging Label:	RIN: 2.20

Assay Class: Eukaryote Total RNA Pico
Data Path: C:\...ents and Settings\Bioanalyzer\2013-12-05\2013-12-05_002.xad

Created: 12/5/2013 10:55:30 AM
Modified: 12/5/2013 11:18:24 AM

Electropherogram Summary Continued ...



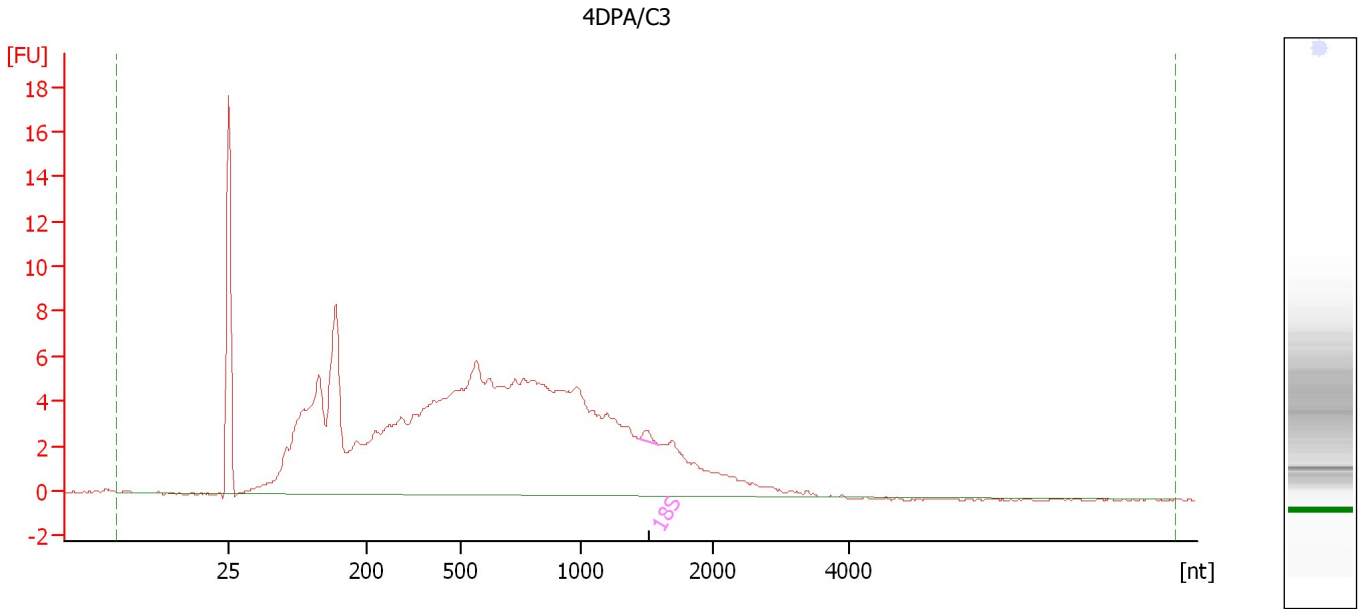
Overall Results for sample 2 : 4DPA/C2.2

RNA Area:	88.7	RNA Integrity Number (RIN):	1.6 (B.02.08)
RNA Concentration:	532 pg/μl	Result Flagging Color:	
rRNA Ratio [28s / 18s]:	0.0	Result Flagging Label:	RIN: 1.60

Assay Class: Eukaryote Total RNA Pico
Data Path: C:\...ents and Settings\Bioanalyzer\2013-12-05\2013-12-05_002.xad

Created: 12/5/2013 10:55:30 AM
Modified: 12/5/2013 11:18:24 AM

Electropherogram Summary Continued ...



Overall Results for sample 3 : 4DPA/C3

RNA Area:	211.1	RNA Integrity Number (RIN):	2.4 (B.02.08)
RNA Concentration:	1,267 pg/μl	Result Flagging Color:	
rRNA Ratio [28s / 18s]:	0.0	Result Flagging Label:	RIN: 2.40

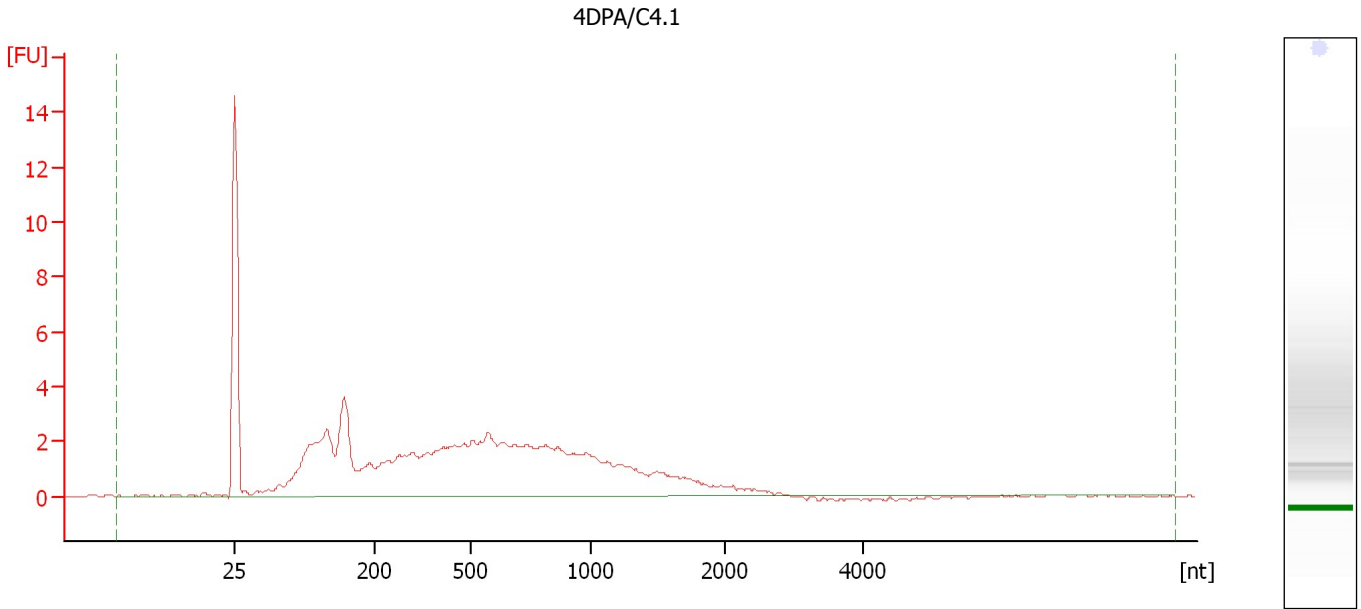
Fragment table for sample 3 : 4DPA/C3

Name	Start Size [nt]	End Size [nt]	Area	% of total Area
18S	1,445	1,600	0.5	0.2

Assay Class: Eukaryote Total RNA Pico
Data Path: C:\...ents and Settings\Bioanalyzer\2013-12-05\2013-12-05_002.xad

Created: 12/5/2013 10:55:30 AM
Modified: 12/5/2013 11:18:24 AM

Electropherogram Summary Continued ...



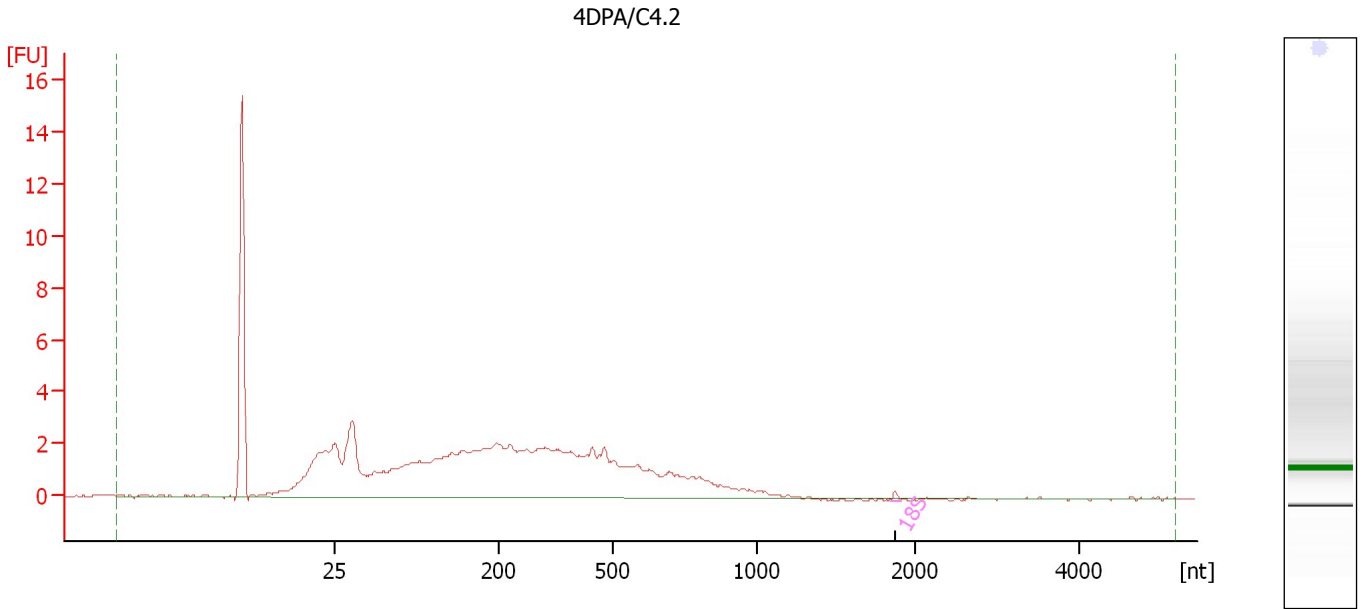
Overall Results for sample 4 : 4DPA/C4.1

RNA Area:	85.8	RNA Integrity Number (RIN):	2.1 (B.02.08)
RNA Concentration:	515 µg/µl	Result Flagging Color:	
rRNA Ratio [28s / 18s]:	0.0	Result Flagging Label:	RIN: 2.10

Assay Class: Eukaryote Total RNA Pico
Data Path: C:\...ents and Settings\Bioanalyzer\2013-12-05\2013-12-05_002.xad

Created: 12/5/2013 10:55:30 AM
Modified: 12/5/2013 11:18:24 AM

Electropherogram Summary Continued ...



Overall Results for sample 5 : 4DPA/C4.2

RNA Area:	84.3	RNA Integrity Number (RIN):	2.4 (B.02.08)
RNA Concentration:	506 µg/µl	Result Flagging Color:	
rRNA Ratio [28s / 18s]:	0.0	Result Flagging Label:	RIN: 2.40

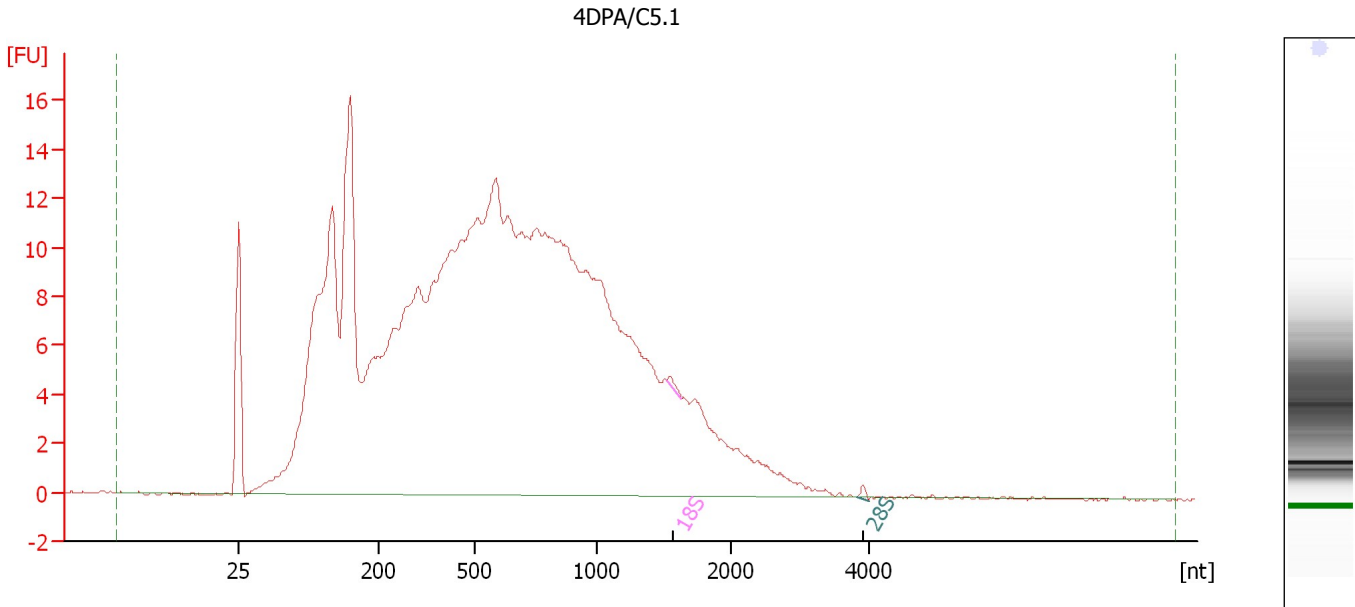
Fragment table for sample 5 : 4DPA/C4.2

Name	Start Size [nt]	End Size [nt]	Area	% of total Area
18S	1,854	1,908	0.1	0.2

Assay Class: Eukaryote Total RNA Pico
Data Path: C:\...ents and Settings\Bioanalyzer\2013-12-05\2013-12-05_002.xad

Created: 12/5/2013 10:55:30 AM
Modified: 12/5/2013 11:18:24 AM

Electropherogram Summary Continued ...



Overall Results for sample 6 : 4DPA/C5.1

RNA Area:	448.6	RNA Integrity Number (RIN):	2 (B.02.08)
RNA Concentration:	2,693 pg/μl	Result Flagging Color:	
rRNA Ratio [28s / 18s]:	0.8	Result Flagging Label:	RIN:2

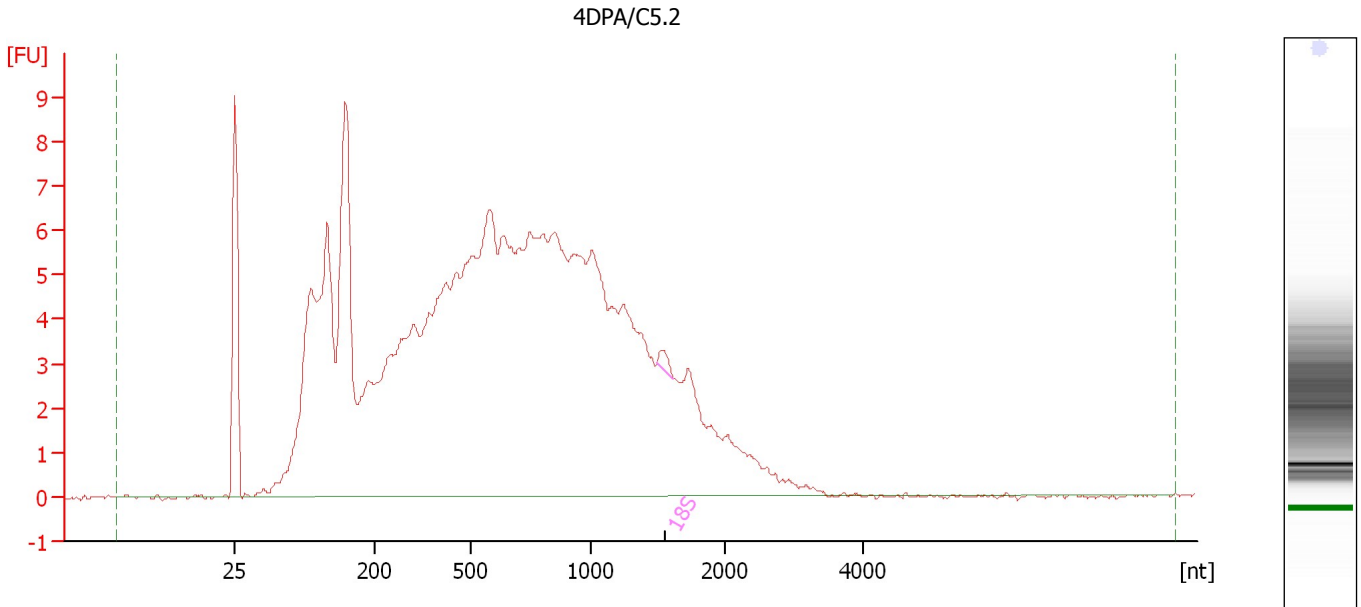
Fragment table for sample 6 : 4DPA/C5.1

Name	Start Size [nt]	End Size [nt]	Area	% of total Area
18S	1,517	1,630	0.3	0.1
28S	3,823	3,977	0.3	0.1

Assay Class: Eukaryote Total RNA Pico
Data Path: C:\...ents and Settings\Bioanalyzer\2013-12-05\2013-12-05_002.xad

Created: 12/5/2013 10:55:30 AM
Modified: 12/5/2013 11:18:24 AM

Electropherogram Summary Continued ...



Overall Results for sample 7 : 4DPA/C5.2

RNA Area:	237.4	RNA Integrity Number (RIN):	2.2 (B.02.08)
RNA Concentration:	1,425 pg/μl	Result Flagging Color:	
rRNA Ratio [28s / 18s]:	0.0	Result Flagging Label:	RIN: 2.20

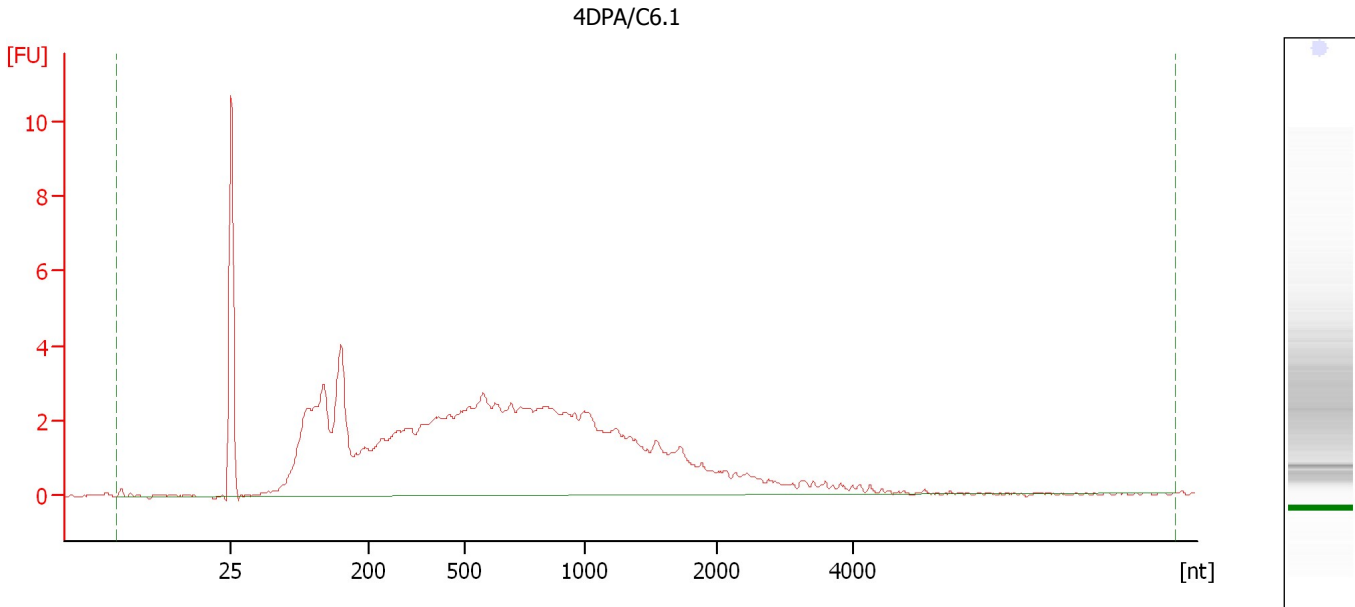
Fragment table for sample 7 : 4DPA/C5.2

Name	Start Size [nt]	End Size [nt]	Area	% of total Area
18S	1,496	1,617	0.4	0.2

Assay Class: Eukaryote Total RNA Pico
Data Path: C:\...ents and Settings\Bioanalyzer\2013-12-05\2013-12-05_002.xad

Created: 12/5/2013 10:55:30 AM
Modified: 12/5/2013 11:18:24 AM

Electropherogram Summary Continued ...



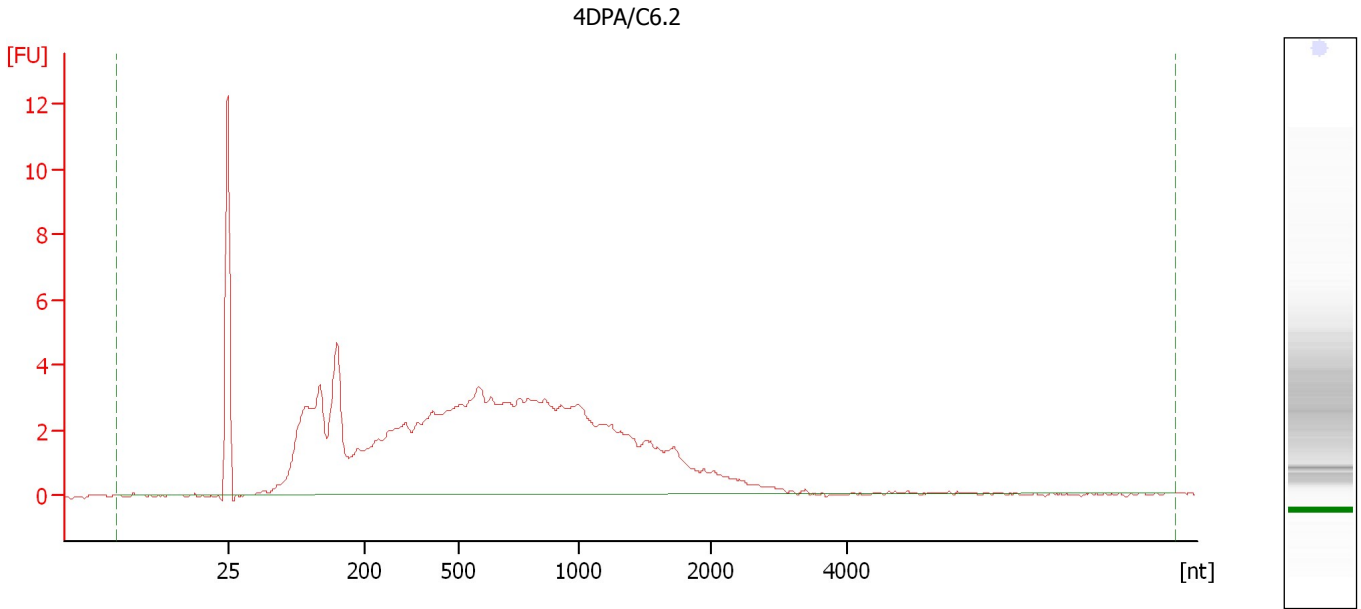
Overall Results for sample 8 : 4DPA/C6.1

RNA Area:	107.4	RNA Integrity Number (RIN):	2.3 (B.02.08)
RNA Concentration:	645 pg/μl	Result Flagging Color:	
rRNA Ratio [28s / 18s]:	0.0	Result Flagging Label:	RIN: 2.30

Assay Class: Eukaryote Total RNA Pico
Data Path: C:\...ents and Settings\Bioanalyzer\2013-12-05\2013-12-05_002.xad

Created: 12/5/2013 10:55:30 AM
Modified: 12/5/2013 11:18:24 AM

Electropherogram Summary Continued ...



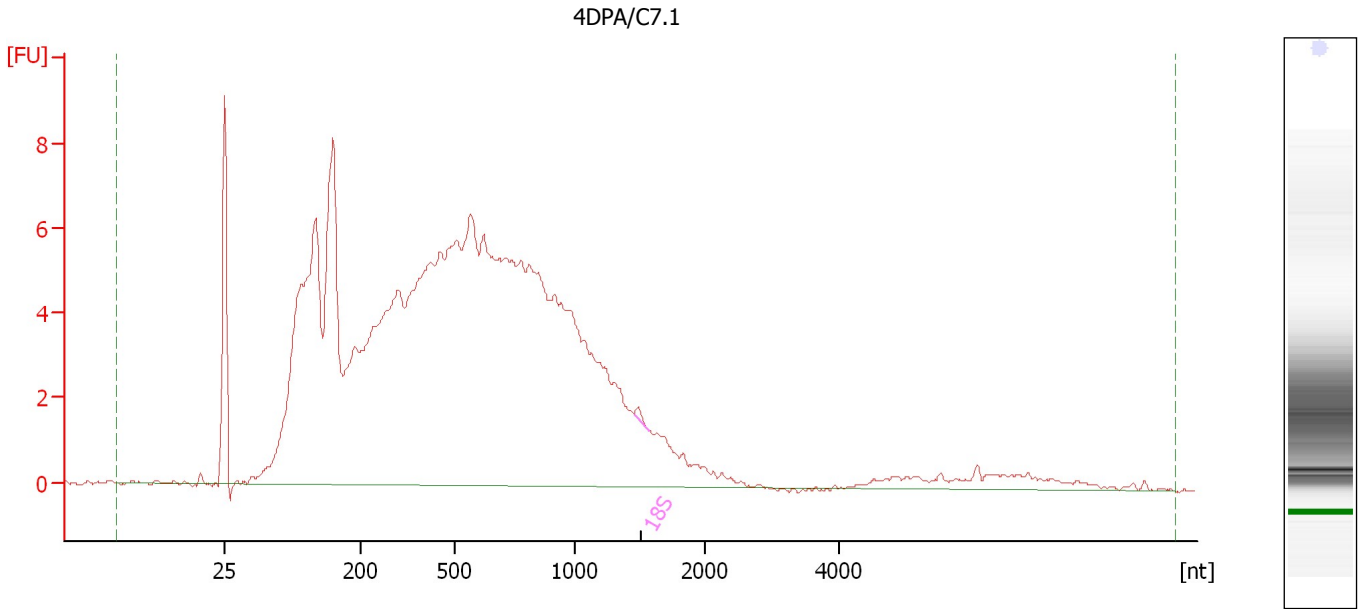
Overall Results for sample 9 : 4DPA/C6.2

RNA Area:	123.7	RNA Integrity Number (RIN):	2.3 (B.02.08)
RNA Concentration:	743 pg/μl	Result Flagging Color:	
rRNA Ratio [28s / 18s]:	0.0	Result Flagging Label:	RIN: 2.30

Assay Class: Eukaryote Total RNA Pico
Data Path: C:\...ents and Settings\Bioanalyzer\2013-12-05\2013-12-05_002.xad

Created: 12/5/2013 10:55:30 AM
Modified: 12/5/2013 11:18:24 AM

Electropherogram Summary Continued ...



Overall Results for sample 10 : 4DPA/C7.1

RNA Area:	221.6	RNA Integrity Number (RIN):	2.2 (B.02.08)
RNA Concentration:	1,330 pg/μl	Result Flagging Color:	
rRNA Ratio [28s / 18s]:	0.0	Result Flagging Label:	RIN: 2.20

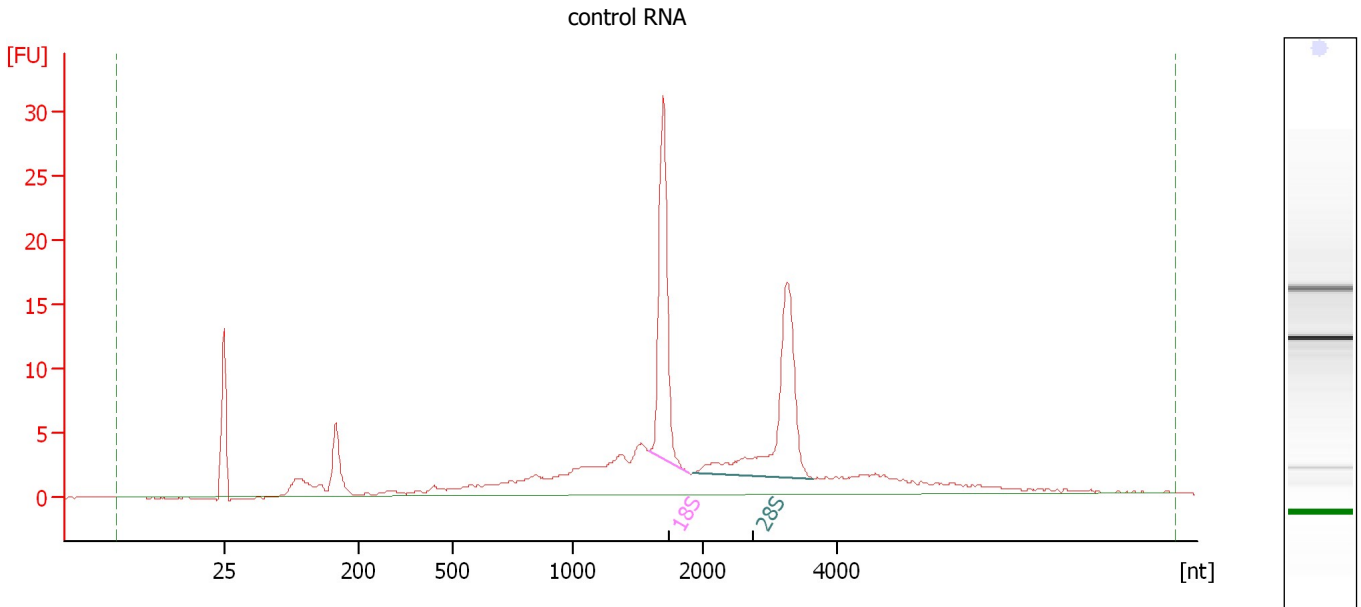
Fragment table for sample 10 : 4DPA/C7.1

Name	Start Size [nt]	End Size [nt]	Area	% of total Area
18S	1,463	1,569	0.2	0.1

Assay Class: Eukaryote Total RNA Pico
 Data Path: C:\...ents and Settings\Bioanalyzer\2013-12-05\2013-12-05_002.xad

Created: 12/5/2013 10:55:30 AM
 Modified: 12/5/2013 11:18:24 AM

Electropherogram Summary Continued ...



Overall Results for sample 11 : control RNA

RNA Area:	160.2	RNA Integrity Number (RIN):	7.5 (B.02.08)
RNA Concentration:	962 pg/μl	Result Flagging Color:	
rRNA Ratio [28s / 18s]:	1.1	Result Flagging Label:	RIN: 7.50

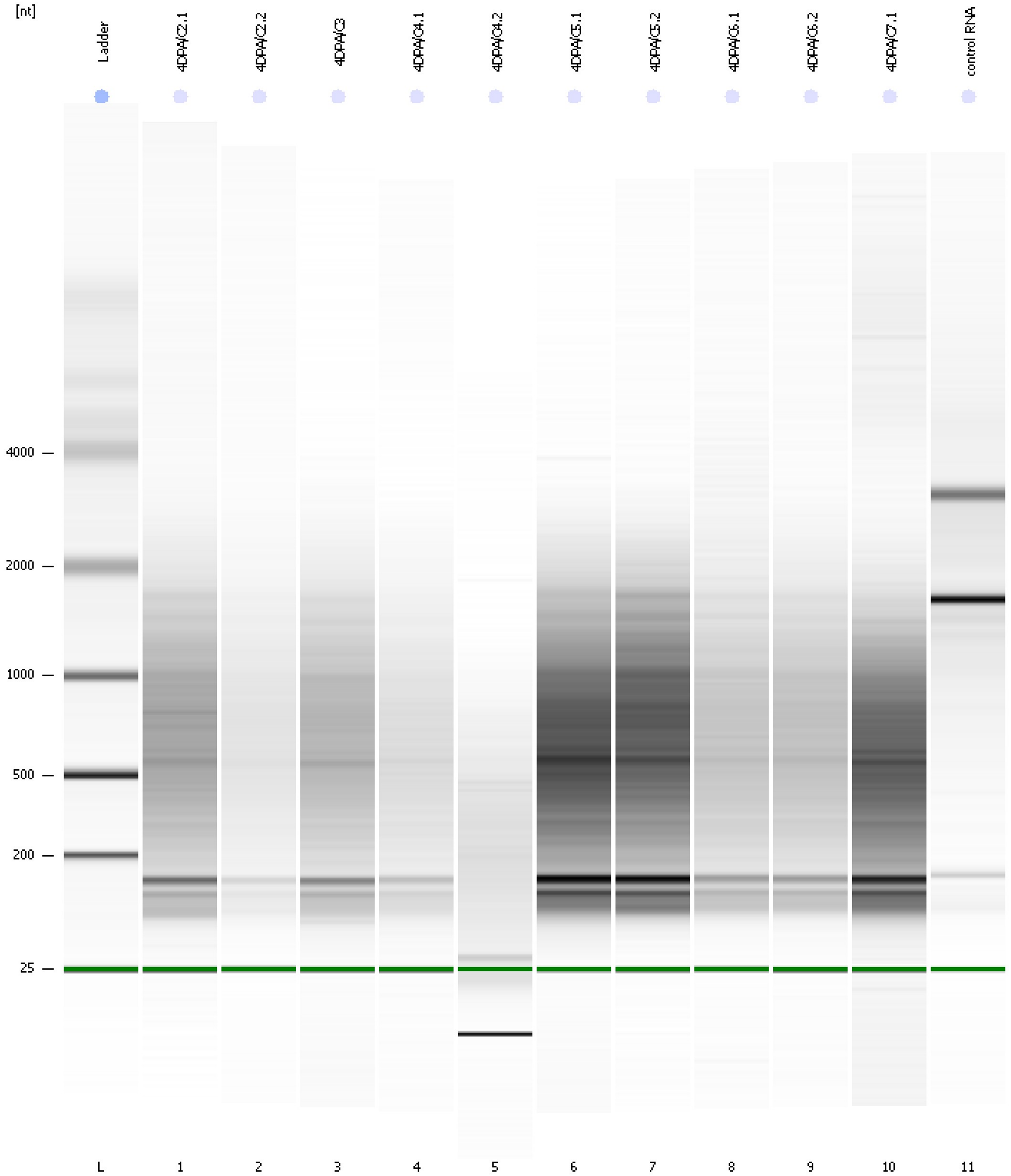
Fragment table for sample 11 : control RNA

Name	Start Size [nt]	End Size [nt]	Area	% of total Area
18S	1,584	1,897	27.6	17.2
28S	1,930	3,651	29.8	18.6

Assay Class: Eukaryote Total RNA Pico
Data Path: C:\...ents and Settings\Bioanalyzer\2013-12-05\2013-12-05_002.xad

Created: 12/5/2013 10:55:30 AM
Modified: 12/5/2013 11:18:24 AM

Gel Image



Assay Class: Eukaryote Total RNA Pico
Data Path: C:\...ents and Settings\Bioanalyzer\2013-12-05\2013-12-05_002.xad

Created: 12/5/2013 10:55:30 AM
Modified: 12/5/2013 11:18:24 AM

Curves

Standard Curve

