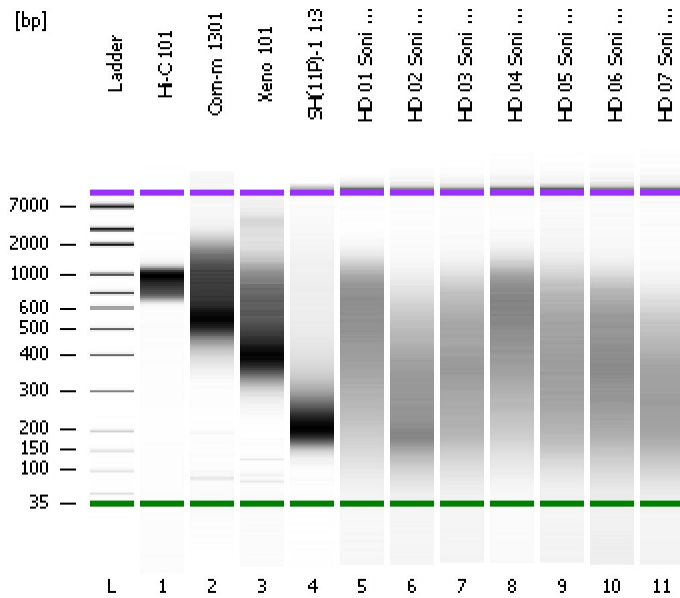


Assay Class: High Sensitivity DNA Assay
Data Path: C:\...ents and Settings\Bioanalyzer\2013-12-05\2013-12-05_003.xad

Created: 12/5/2013 12:26:55 PM
Modified: 12/5/2013 1:19:33 PM

Electrophoresis File Run Summary



Instrument Information:

Instrument Name: DE13701086 Firmware: C.01.069
Serial#: DE13701086 Type: G2938B

Assay Information:

Assay Origin Path: C:\Program Files\Agilent\2100 bioanalyzer\2100 expert\assays\dsDNA\High Sensitivity DNA.xsy
Assay Class: High Sensitivity DNA Assay
Version: 1.03
Assay Comments: Copyright © 2003-2010 Agilent Technologies

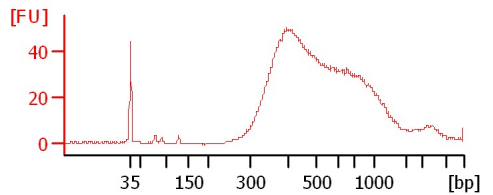
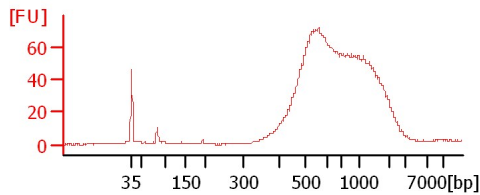
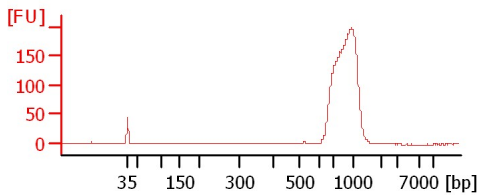
Chip Information:

Chip Lot #: Reagent Kit Lot #: Chip Comments:

Hi-C 101

Corn-m 1301

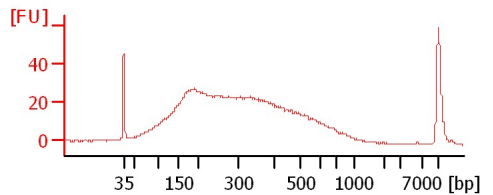
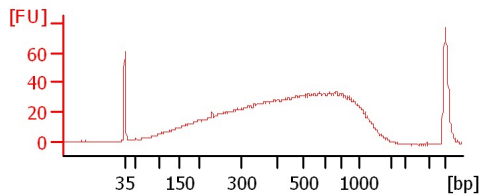
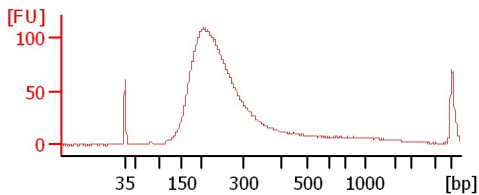
Xeno 101



SH(11P)-1 1:3

HD 01 Soni 1:8

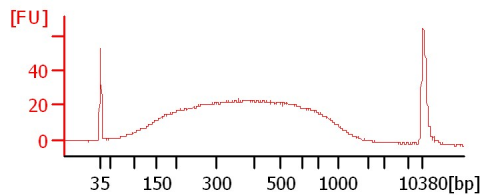
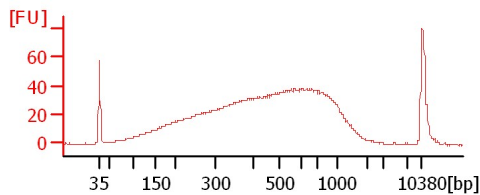
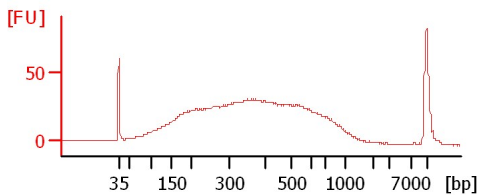
HD 02 Soni 1:8



HD 03 Soni 1:8

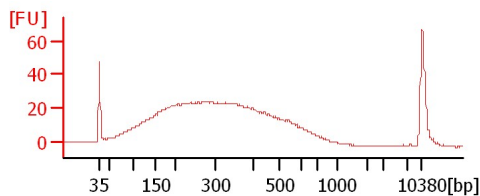
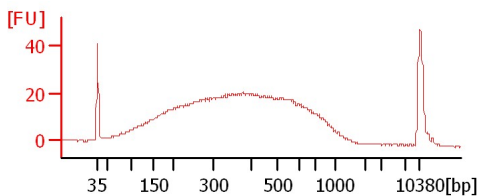
HD 04 Soni 1:8

HD 05 Soni 1:8



HD 06 Soni 1:8

HD 07 Soni 1:8



Assay Class: High Sensitivity DNA Assay
 Data Path: C:\...ents and Settings\Bioanalyzer\2013-12-05\2013-12-05_003.xad

Created: 12/5/2013 12:26:55 PM
 Modified: 12/5/2013 1:19:33 PM

Electrophoresis File Run Summary (Chip Summary)

Sample Name	Sample Comment	Rest. Digest	Status	Observation	Result Label	Result Color
Hi-C 101		<input type="checkbox"/>	✓			
Corn-m 1301		<input type="checkbox"/>	✓			
Xeno 101		<input type="checkbox"/>	✓			
SH(11P)-1 1:3		<input type="checkbox"/>	✓			
HD 01 Soni 1:8		<input type="checkbox"/>	✓			
HD 02 Soni 1:8		<input type="checkbox"/>	✓			
HD 03 Soni 1:8		<input type="checkbox"/>	✓			
HD 04 Soni 1:8		<input type="checkbox"/>	✓			
HD 05 Soni 1:8		<input type="checkbox"/>	✓			
HD 06 Soni 1:8		<input type="checkbox"/>	✓			
HD 07 Soni 1:8		<input type="checkbox"/>	✓			
Ladder		<input type="checkbox"/>	✓			

Chip Lot #

Reagent Kit Lot #

Chip Comments :

Assay Class: High Sensitivity DNA Assay
Data Path: C:\...ents and Settings\Bioanalyzer\2013-12-05\2013-12-05_003.xad

Created: 12/5/2013 12:26:55 PM
Modified: 12/5/2013 1:19:33 PM

Electrophoresis Assay Details

General Analysis Settings

Number of Available Sample and Ladder Wells (Max.) : 12
Minimum Visible Range [s] : 32
Maximum Visible Range [s] : 138
Start Analysis Time Range [s] : 33
End Analysis Time Range [s] : 137.5
Ladder Concentration [pg/μl] : 1950
Uses Standard Area for Ladder Fragments
Lower Marker Concentration [pg/μl] : 125
Upper Marker Concentration [pg/μl] : 75
Used Upper Marker for Quantitation
Standard Curve Fit is Point to Point
Show Data Aligned to Lower and Upper Marker

Integrator Settings

Integration Start Time [s] : 33.05
Integration End Time [s] : 137
Slope Threshold : 0.8
Height Threshold [FU] : 5
Area Threshold : 0.1
Width Threshold [s] : 0.6
Baseline Plateau [s] : 0.5

Filter Settings

Filter Width [s] : 0.5
Polynomial Order : 4

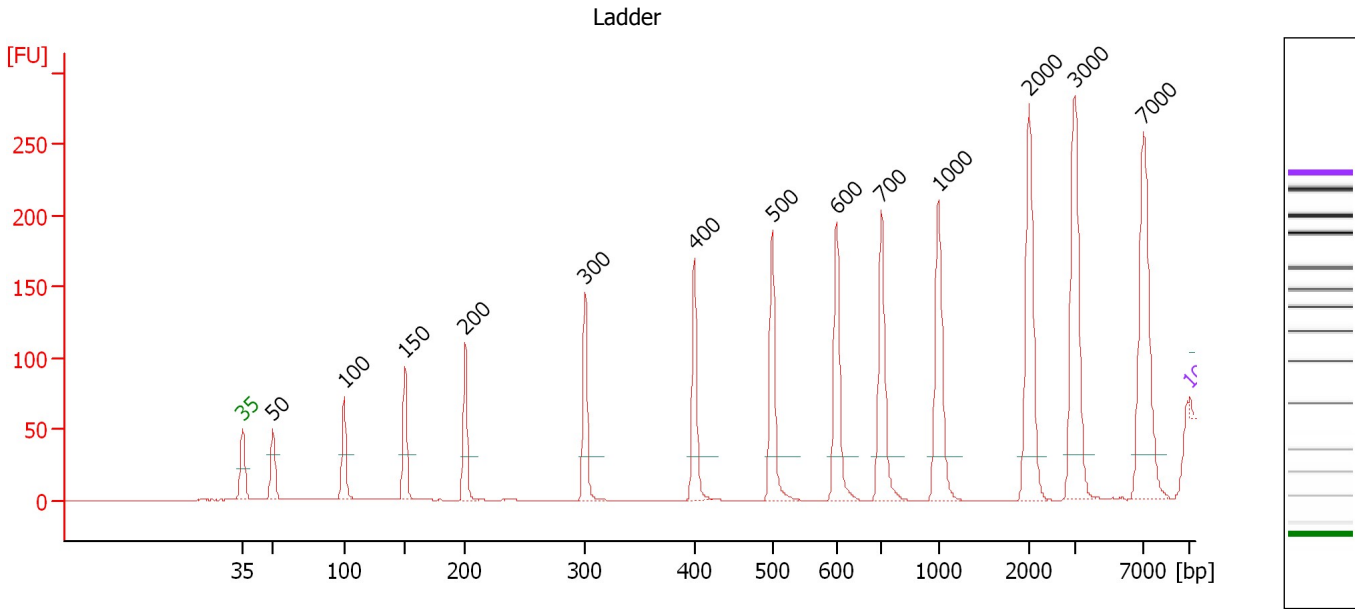
Ladder

Ladder Peak	Size	Area
1	35	160
2	50	210
3	100	208
4	150	221
5	200	242
6	300	270
7	400	305
8	500	306
9	600	336
10	700	321
11	1000	366
12	2000	413
13	3000	411
14	7000	400
15	10380	214

Assay Class: High Sensitivity DNA Assay
 Data Path: C:\...ents and Settings\Bioanalyzer\2013-12-05\2013-12-05_003.xad

Created: 12/5/2013 12:26:55 PM
 Modified: 12/5/2013 1:19:33 PM

Electropherogram Summary



Overall Results for Ladder

Noise: 0.1

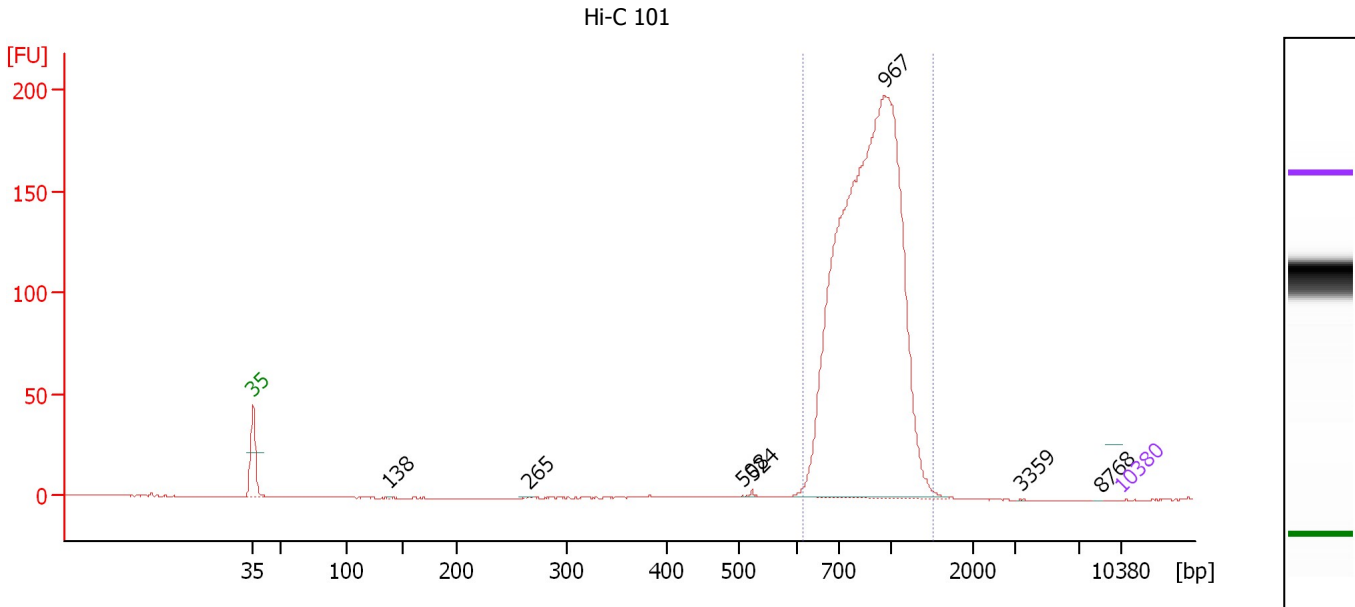
Peak table for Ladder

Peak	Aligned Migration Time [s]	Size [bp]	Conc. [pg/μl]	Molarity [pmol/l]	Observations
1	43.00	35	125.00	5,411.3	Lower Marker
2	45.25	50	150.00	4,545.5	Ladder Peak
3	50.52	100	150.00	2,272.7	Ladder Peak
4	55.01	150	150.00	1,515.2	Ladder Peak
5	59.47	200	150.00	1,136.4	Ladder Peak
6	68.33	300	150.00	757.6	Ladder Peak
7	76.37	400	150.00	568.2	Ladder Peak
8	82.12	500	150.00	454.5	Ladder Peak
9	86.88	600	150.00	378.8	Ladder Peak
10	90.19	700	150.00	324.7	Ladder Peak
11	94.41	1,000	150.00	227.3	Ladder Peak
12	101.10	2,000	150.00	113.6	Ladder Peak
13	104.45	3,000	150.00	75.8	Ladder Peak
14	109.57	7,000	150.00	32.5	Ladder Peak
15	113.00	10,380	75.00	10.9	Upper Marker

Assay Class: High Sensitivity DNA Assay
 Data Path: C:\...ents and Settings\Bioanalyzer\2013-12-05\2013-12-05_003.xad

Created: 12/5/2013 12:26:55 PM
 Modified: 12/5/2013 1:19:33 PM

Electropherogram Summary Continued ...



Setpoint Deviations for sample 1 : Hi-C 101

Height Threshold [FU] : 0.1

Overall Results for sample 1 : Hi-C 101

Number of peaks found: 7 Corr. Area 1: 1,259.2
 Noise: 0.2

Peak table for sample 1 : Hi-C 101

Peak	Aligned Migration Time [s]	Size [bp]	Conc. [pg/μl]	Molarity [pmol/l]	Observations
1	43.00	35	125.00	5,411.3	Lower Marker
2	53.97	138	299.87	3,283.3	
3	65.20	265	358.18	2,050.3	
4	82.50	508	154.34	460.4	
5	83.27	524	726.80	2,100.7	
6	93.94	967	760,576.38	1,191,962.9	
7	104.91	3,359	75.34	34.0	
8	111.37	8,768	62.39	10.8	
9	113.00	10,380	75.00	10.9	Upper Marker

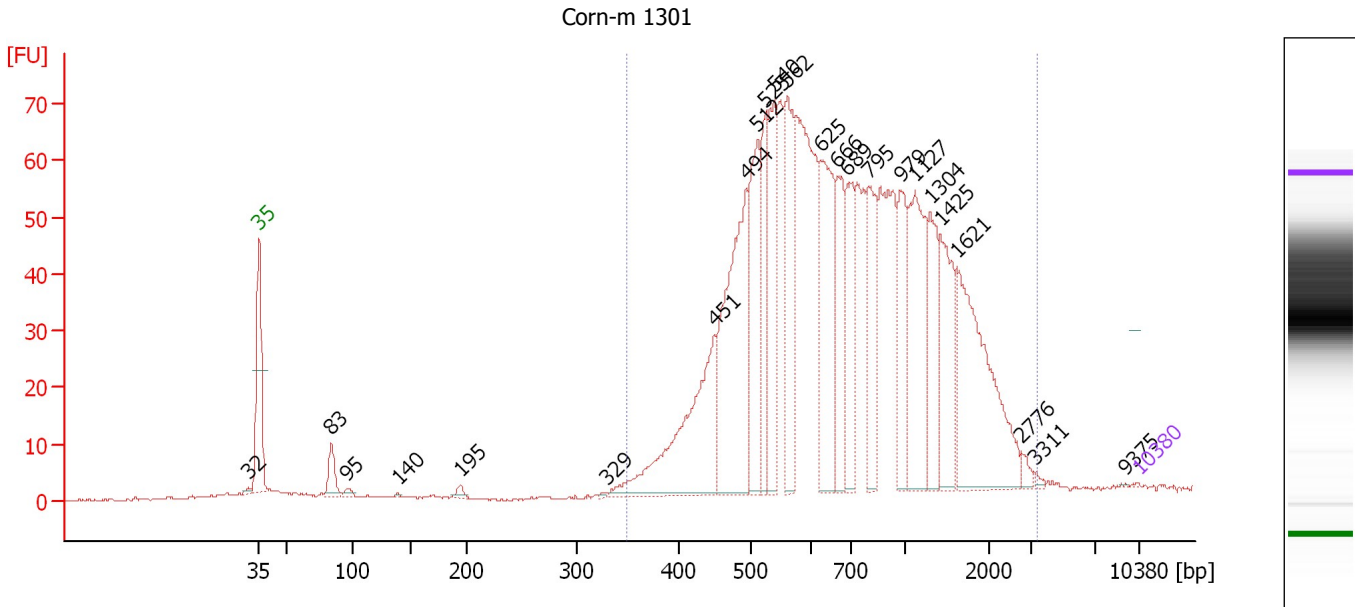
Region table for sample 1 : Hi-C 101

From [bp]	To [bp]	Average Size [bp]	Molarity [pmol/l]	Conc. [pg/μl]	Corr. Area	% of Total	Size distribution in CV [%]	Color
613	1,515	893	1,404,791.4	798,848.75	1,259.2	99	18.9	Blue

Assay Class: High Sensitivity DNA Assay
 Data Path: C:\...ents and Settings\Bioanalyzer\2013-12-05\2013-12-05_003.xad

Created: 12/5/2013 12:26:55 PM
 Modified: 12/5/2013 1:19:33 PM

Electropherogram Summary Continued ...



Setpoint Deviations for sample 2 : Corn-m 1301

Height Threshold [FU] : 0.5

Overall Results for sample 2 : Corn-m 1301

Number of peaks found: 24 Corr. Area 1: 1,386.0
 Noise: 0.2

Peak table for sample 2 : Corn-m 1301


Peak	Aligned Migration Time [s]	Size [bp]	Conc. [pg/μl]	Molarity [pmol/l]	Observations
1	42.19	32	0.00	0.0	
2	43.00	35	125.00	5,411.3	Lower Marker
3	48.77	83	3,282.27	59,618.0	
4	50.05	95	629.09	9,982.9	
5	54.08	140	140.32	1,523.1	
6	59.05	195	645.39	5,007.4	
7	70.63	329	197.62	910.9	
8	79.29	451	21,861.12	73,453.5	
9	81.80	494	26,060.96	79,853.4	
10	82.69	512	14,210.31	42,048.4	
11	83.33	525	8,701.55	25,093.2	
12	84.01	540	12,256.86	34,412.6	
13	85.07	562	12,565.50	33,881.3	
14	87.70	625	15,247.34	36,981.7	
15	89.06	666	8,624.29	19,627.9	
16	89.82	689	9,003.24	19,803.5	
17	91.52	795	9,226.19	17,593.7	
18	94.11	979	8,121.19	12,570.6	
19	95.26	1,127	13,619.84	18,314.1	
20	96.44	1,304	7,551.91	8,772.9	
21	97.25	1,425	9,233.35	9,819.4	
22	98.57	1,621	18,618.48	17,400.3	

Assay Class: High Sensitivity DNA Assay
 Data Path: C:\...ents and Settings\Bioanalyzer\2013-12-05\2013-12-05_003.xad


Created: 12/5/2013 12:26:55 PM
 Modified: 12/5/2013 1:19:33 PM

Electropherogram Summary Continued ...

... Peak table for sample 2 : Corn-m 1301

Peak	Aligned Migration Time [s]	Size [bp]	Conc. [pg/ μ l]	Molarity [pmol/l]	Observations
23	103.70	2,776	706.05	385.3	
24	104.85	3,311	256.92	117.6	
25	111.98	9,375	39.40	6.4	
26	 113.00	10,380	75.00	10.9	Upper Marker

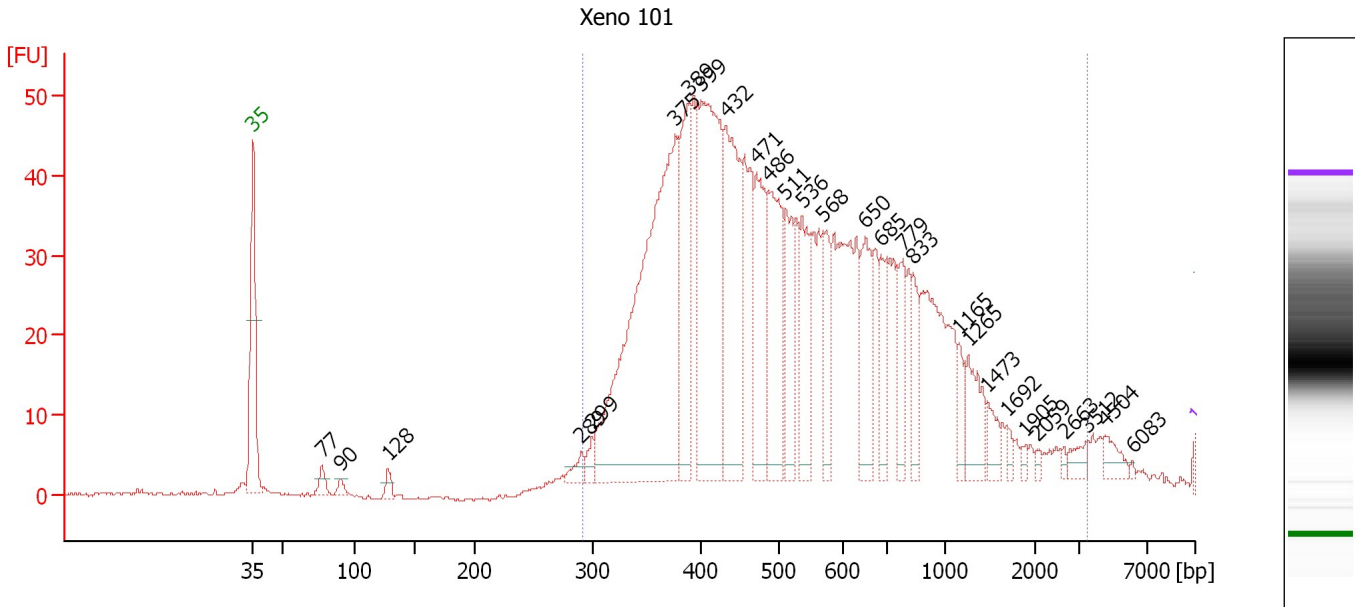
Region table for sample 2 : Corn-m 1301

From [bp]	To [bp]	Average Size [bp]	Molarity [pmol/l]	Conc. [pg/ μ l]	Corr. Area	% of Total	Size distribution in CV [%]	Color
349	3,325	863	593,055.7	259,019.09	1,386.0	97	55.7	

Assay Class: High Sensitivity DNA Assay
 Data Path: C:\...ents and Settings\Bioanalyzer\2013-12-05\2013-12-05_003.xad

Created: 12/5/2013 12:26:55 PM
 Modified: 12/5/2013 1:19:33 PM

Electropherogram Summary Continued ...



Setpoint Deviations for sample 3 : Xeno 101

Height Threshold [FU] : 2

Overall Results for sample 3 : Xeno 101

Number of peaks found: 28 Corr. Area 1: 1,187.7
 Noise: 0.2

Peak table for sample 3 : Xeno 101

Peak	Aligned Migration Time [s]	Size [bp]	Conc. [pg/μl]	Molarity [pmol/l]	Observations
1	43.00	35	125.00	5,411.3	Lower Marker
2	48.12	77	977.08	19,178.2	
3	49.50	90	509.10	8,538.3	
4	53.07	128	824.04	9,724.7	
5	67.39	289	860.73	4,506.1	
6	68.22	299	807.99	4,097.0	
7	74.37	375	34,389.48	138,878.7	
8	75.44	389	7,953.69	31,018.5	
9	76.31	399	18,927.44	71,808.2	
10	78.22	432	12,217.54	42,828.9	
11	80.44	471	6,879.52	22,138.4	
12	81.31	486	8,673.99	27,041.7	
13	82.62	511	4,578.01	13,585.5	
14	83.85	536	4,907.65	13,863.4	
15	85.36	568	3,695.24	9,857.4	
16	88.53	650	4,538.07	10,582.0	
17	89.68	685	2,451.42	5,426.0	
18	91.31	779	2,777.04	5,399.3	
19	92.06	833	2,448.20	4,453.5	
20	95.51	1,165	1,130.65	1,470.8	
21	96.18	1,265	2,700.95	3,234.0	
22	97.57	1,473	1,126.96	1,159.5	

Assay Class: High Sensitivity DNA Assay
 Data Path: C:\...ents and Settings\Bioanalyzer\2013-12-05\2013-12-05_003.xad

Created: 12/5/2013 12:26:55 PM
 Modified: 12/5/2013 1:19:33 PM

Electropherogram Summary Continued ...

... Peak table for sample 3 : Xeno 101

Peak	Aligned Migration Time [s]	Size [bp]	Conc. [pg/μl]	Molarity [pmol/l]	Observations
23	99.04	1,692	386.97	346.6	
24	100.47	1,905	278.81	221.8	
25	101.30	2,059	217.35	160.0	
26	103.32	2,663	218.66	124.4	
27	105.11	3,512	707.19	305.1	
28	106.38	4,504	874.26	294.1	
29	108.40	6,083	102.96	25.6	
30	113.00	10,380	75.00	10.9	Upper Marker

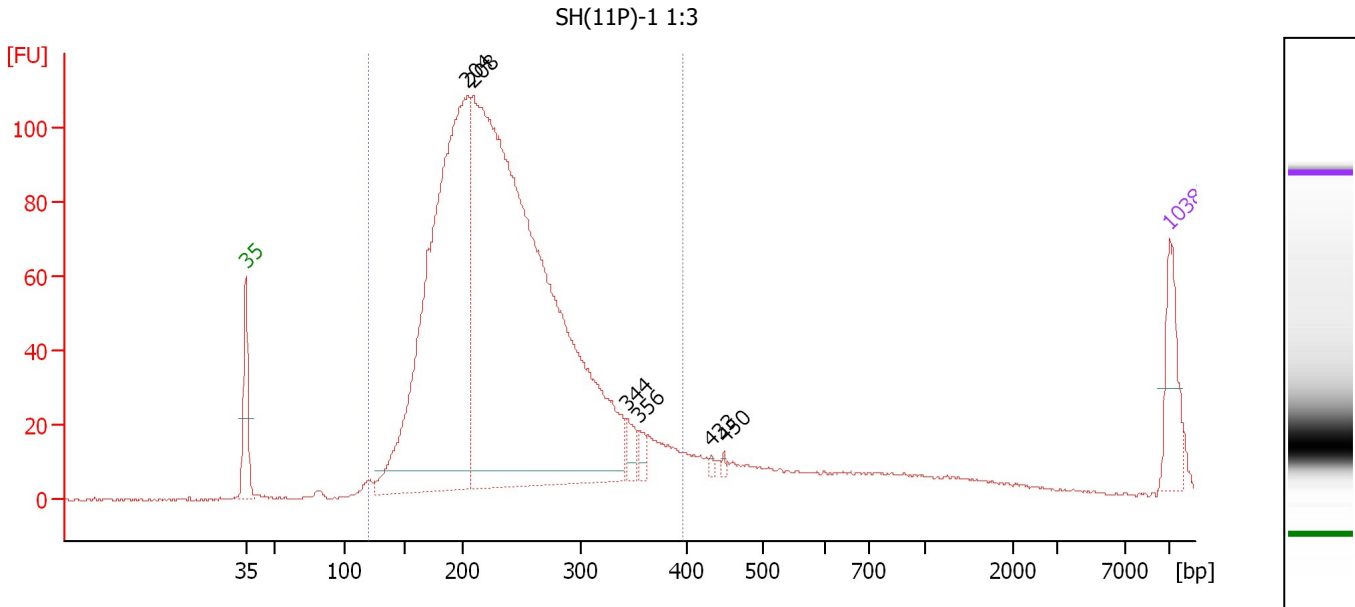
Region table for sample 3 : Xeno 101

From [bp]	To [bp]	Average Size [bp]	Molarity [pmol/l]	Conc. [pg/μl]	Corr. Area	% of Total	Size distribution in CV [%]	Color
291	3,476	620	563,642.9	179,388.66	1,187.7	97	64.2	

Assay Class: High Sensitivity DNA Assay
 Data Path: C:\...ents and Settings\Bioanalyzer\2013-12-05\2013-12-05_003.xad

Created: 12/5/2013 12:26:55 PM
 Modified: 12/5/2013 1:19:33 PM

Electropherogram Summary Continued ...



Overall Results for sample 4 : SH(11P)-1 1:3

Number of peaks found: 6 Corr. Area 1: 1,912.4
 Noise: 0.3

Peak table for sample 4 : SH(11P)-1 1:3

Peak	Aligned Migration Time [s]	Size [bp]	Conc. [pg/μl]	Molarity [pmol/l]	Observations
1	43.00	35	125.00	5,411.3	Lower Marker
2	59.80	204	1,419.69	10,554.4	
3	60.21	208	2,525.32	18,363.4	
4	71.88	344	35.51	156.3	
5	72.85	356	21.32	90.7	
6	78.26	433	6.10	21.3	
7	79.23	450	5.36	18.1	
8	113.00	10,380	75.00	10.9	Upper Marker

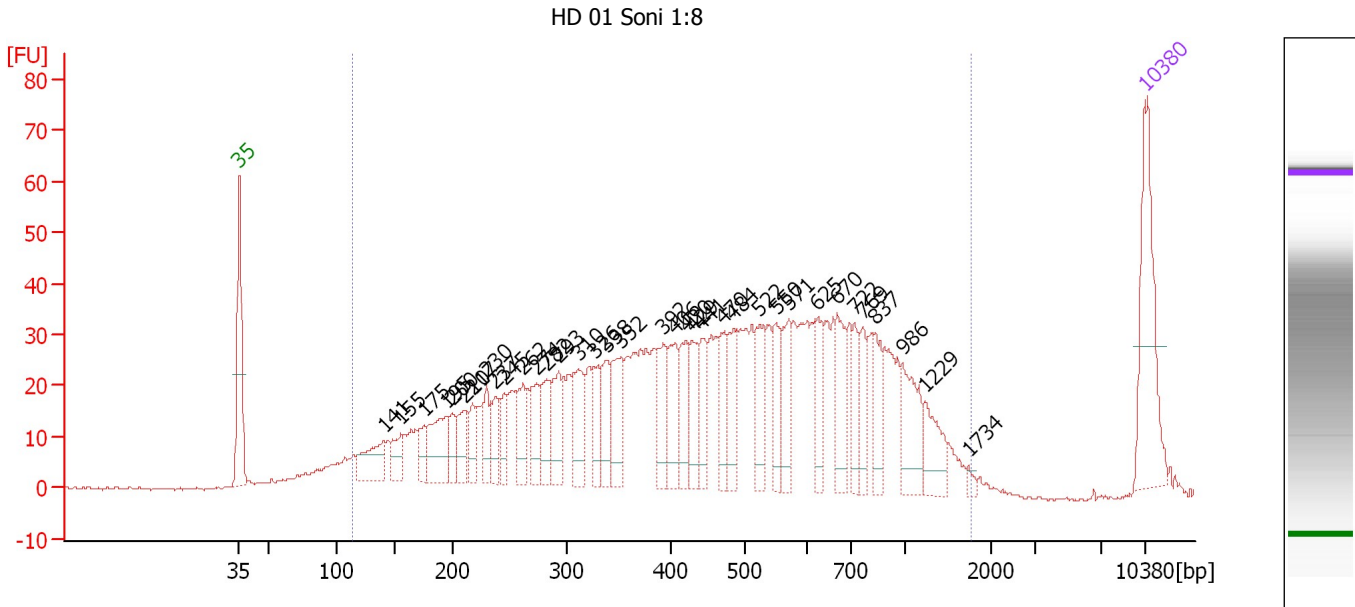
Region table for sample 4 : SH(11P)-1 1:3

From [bp]	To [bp]	Average Size [bp]	Molarity [pmol/l]	Conc. [pg/μl]	Corr. Area	% of Total	Size distribution in CV [%]	Color
120	396	235	27,057.8	3,936.30	1,912.4	96	22.7	Blue

Assay Class: High Sensitivity DNA Assay
 Data Path: C:\...ents and Settings\Bioanalyzer\2013-12-05\2013-12-05_003.xad

Created: 12/5/2013 12:26:55 PM
 Modified: 12/5/2013 1:19:33 PM

Electropherogram Summary Continued ...



Overall Results for sample 5 : HD 01 Soni 1:8

Number of peaks found: 36 Corr. Area 1: 1,487.0
 Noise: 0.3

Peak table for sample 5 : HD 01 Soni 1:8


Peak	Aligned Migration Time [s]	Size [bp]	Conc. [pg/μl]	Molarity [pmol/l]	Observations
1	43.00	35	125.00	5,411.3	Lower Marker
2	54.21	141	47.51	510.5	
3	55.48	155	26.82	261.7	
4	57.26	175	19.46	168.3	
5	58.99	195	59.82	465.8	
6	59.48	200	20.63	156.1	
7	60.35	210	30.31	218.8	
8	61.00	217	22.11	154.1	
9	62.12	230	25.94	171.0	
10	62.78	237	30.40	194.1	
11	63.44	245	25.83	159.9	
12	64.92	262	34.51	199.9	
13	65.99	274	36.45	201.8	
14	66.77	282	37.11	199.1	
15	67.68	293	39.90	206.5	
16	69.16	310	48.41	236.3	
17	70.40	326	30.53	142.0	
18	71.39	338	36.99	165.8	
19	72.50	352	49.14	211.6	
20	75.75	392	39.16	151.2	
21	76.70	406	42.80	159.8	
22	77.53	420	38.94	140.4	
23	78.02	429	34.86	123.2	
24	78.72	441	35.03	120.4	
25	80.41	470	31.65	102.0	

Assay Class: High Sensitivity DNA Assay
 Data Path: C:\...ents and Settings\Bioanalyzer\2013-12-05\2013-12-05_003.xad


Created: 12/5/2013 12:26:55 PM
 Modified: 12/5/2013 1:19:33 PM

Electropherogram Summary Continued ...

... Peak table for sample 5 : HD 01 Soni 1:8

Peak	Aligned Migration Time [s]	Size [bp]	Conc. [pg/μl]	Molarity [pmol/l]	Observations
26	81.19	484	36.11	113.0	
27	83.17	522	33.65	97.7	
28	84.49	550	34.37	94.7	
29	85.48	571	37.65	100.0	
30	87.70	625	31.19	75.6	
31	89.19	670	38.98	88.2	
32	90.50	722	26.05	54.6	
33	91.16	769	24.75	48.8	
34	92.11	837	27.44	49.7	
35	94.21	986	45.02	69.2	
36	95.94	1,229	31.17	38.4	
37	99.32	1,734	3.95	3.4	
38	 113.00	10,380	75.00	10.9	Upper Marker

Region table for sample 5 : HD 01 Soni 1:8

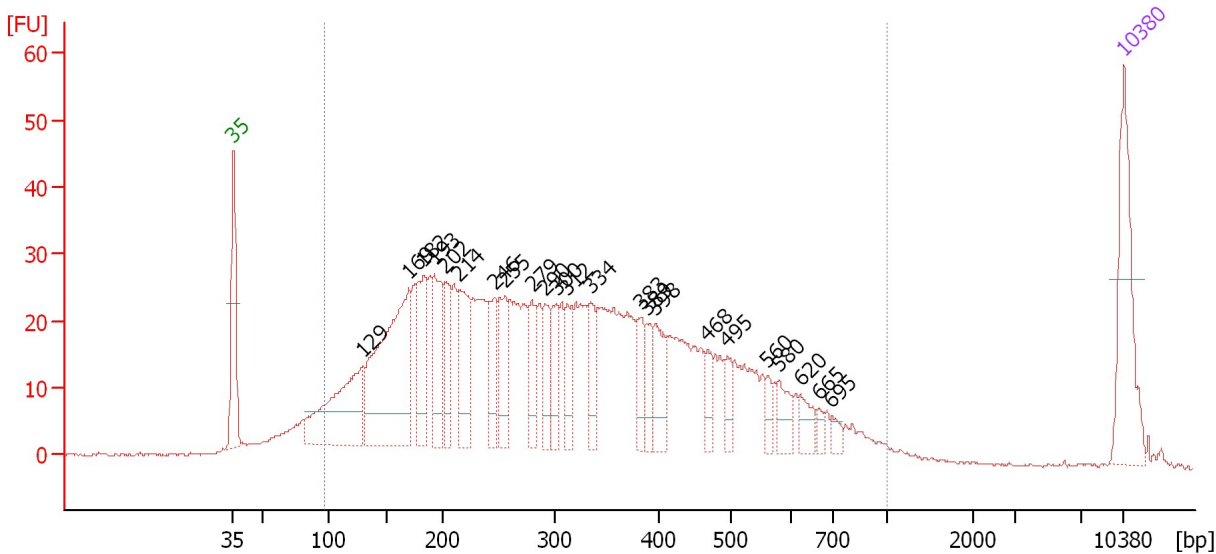
From [bp]	To [bp]	Average Size [bp]	Molarity [pmol/l]	Conc. [pg/μl]	Corr. Area	% of Total	Size distribution in CV [%]	Color
113	1,764	512	9,249.7	2,025.34	1,487.0	96	55.7	

Assay Class: High Sensitivity DNA Assay
 Data Path: C:\...ents and Settings\Bioanalyzer\2013-12-05\2013-12-05_003.xad

Created: 12/5/2013 12:26:55 PM
 Modified: 12/5/2013 1:19:33 PM

Electropherogram Summary Continued ...

HD 02 Soni 1:8



Overall Results for sample 6 : HD 02 Soni 1:8

Number of peaks found: 23 Corr. Area 1: 1,185.0
 Noise: 0.2

Peak table for sample 6 : HD 02 Soni 1:8

Peak	Aligned Migration Time [s]	Size [bp]	Conc. [pg/μl]	Molarity [pmol/l]	Observations
1	43.00	35	125.00	5,411.3	Lower Marker
2	53.14	129	165.21	1,938.0	
3	56.75	169	264.41	2,363.9	
4	57.88	182	84.05	699.0	
5	58.80	193	85.21	670.5	
6	59.64	202	53.82	403.8	
7	60.73	214	77.35	546.9	
8	63.54	246	52.64	324.3	
9	64.34	255	58.36	346.8	
10	66.47	279	36.31	197.2	
11	67.48	290	40.31	210.3	
12	68.36	300	42.14	212.5	
13	69.28	312	33.10	160.8	
14	71.08	334	36.60	165.9	
15	75.02	383	35.35	139.7	
16	75.49	389	26.25	102.2	
17	76.20	398	43.74	166.6	
18	80.26	468	21.75	70.4	
19	81.86	495	20.03	61.3	
20	85.00	560	11.83	32.0	
21	85.92	580	22.61	59.1	
22	87.56	620	18.01	44.0	
23	89.02	665	7.62	17.4	
24	90.03	695	8.49	18.5	
25	113.00	10,380	75.00	10.9	Upper Marker

Assay Class: High Sensitivity DNA Assay
Data Path: C:\...ents and Settings\Bioanalyzer\2013-12-05\2013-12-05_003.xad

Created: 12/5/2013 12:26:55 PM
Modified: 12/5/2013 1:19:33 PM

Electropherogram Summary Continued ...

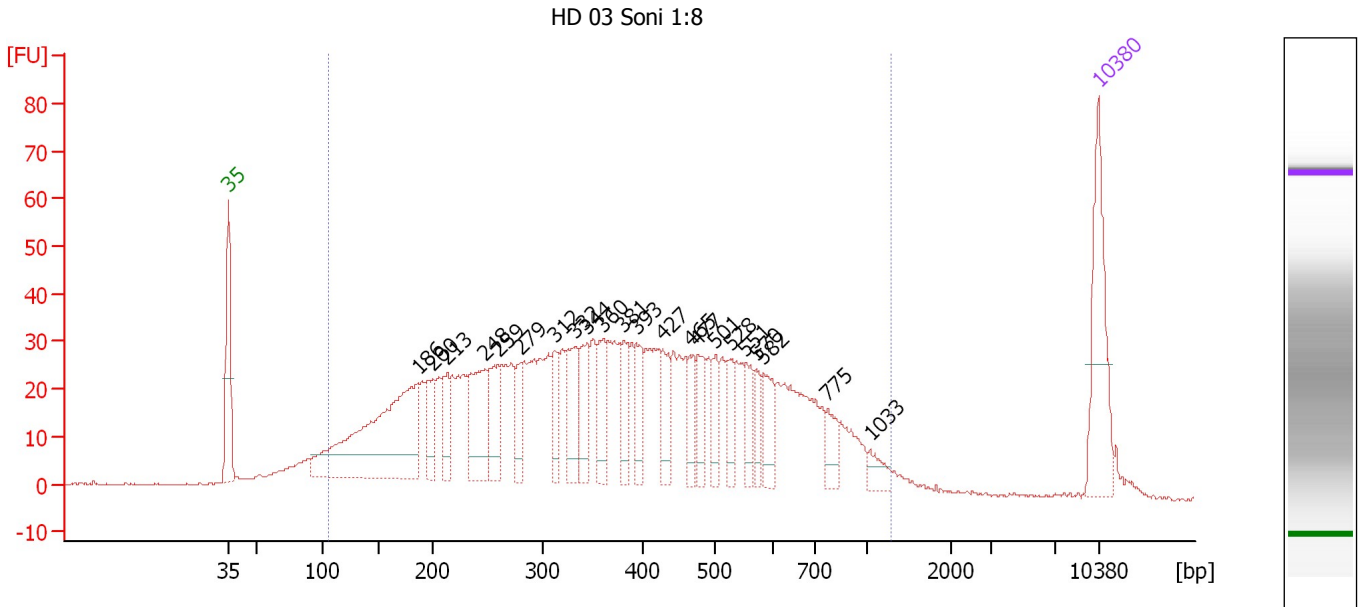
... Region table for sample 6 : HD 02 Soni 1:8

From [bp]	To [bp]	Average Size [bp]	Molarity [pmol/l]	Conc. [pg/μl]	Corr. Area	% of Total	Size distribution in CV [%]	Color
97	1,000	329	14,967.4	2,335.48	1,185.0	94	47.6	■

Assay Class: High Sensitivity DNA Assay
 Data Path: C:\...ents and Settings\Bioanalyzer\2013-12-05\2013-12-05_003.xad

Created: 12/5/2013 12:26:55 PM
 Modified: 12/5/2013 1:19:33 PM

Electropherogram Summary Continued ...



Overall Results for sample 7 : HD 03 Soni 1:8

Number of peaks found: 22 Corr. Area 1: 1,497.1
 Noise: 0.2

Peak table for sample 7 : HD 03 Soni 1:8

Peak	Aligned Migration Time [s]	Size [bp]	Conc. [pg/μl]	Molarity [pmol/l]	Observations
1	43.00	35	125.00	5,411.3	Lower Marker
2	58.24	186	284.42	2,314.6	
3	59.44	200	44.69	339.1	
4	60.60	213	40.23	286.5	
5	63.69	248	88.97	544.4	
6	64.72	259	58.76	343.4	
7	66.48	279	31.22	169.5	
8	69.27	312	34.39	167.2	
9	70.94	332	55.34	252.2	
10	71.84	344	48.12	212.1	
11	73.13	360	40.79	171.8	
12	74.80	381	31.78	126.5	
13	75.79	393	34.52	133.1	
14	77.94	427	35.55	126.0	
15	80.12	465	29.88	97.3	
16	80.77	477	33.57	106.7	
17	82.14	501	25.29	76.5	
18	83.43	528	25.81	74.1	
19	84.55	551	26.97	74.2	
20	85.45	570	19.08	50.7	
21	86.05	582	32.98	85.8	
22	91.24	775	21.50	42.1	
23	94.63	1,033	13.64	20.0	
24	113.00	10,380	75.00	10.9	Upper Marker

Assay Class: High Sensitivity DNA Assay
Data Path: C:\...ents and Settings\Bioanalyzer\2013-12-05\2013-12-05_003.xad

Created: 12/5/2013 12:26:55 PM
Modified: 12/5/2013 1:19:33 PM

Electropherogram Summary Continued ...

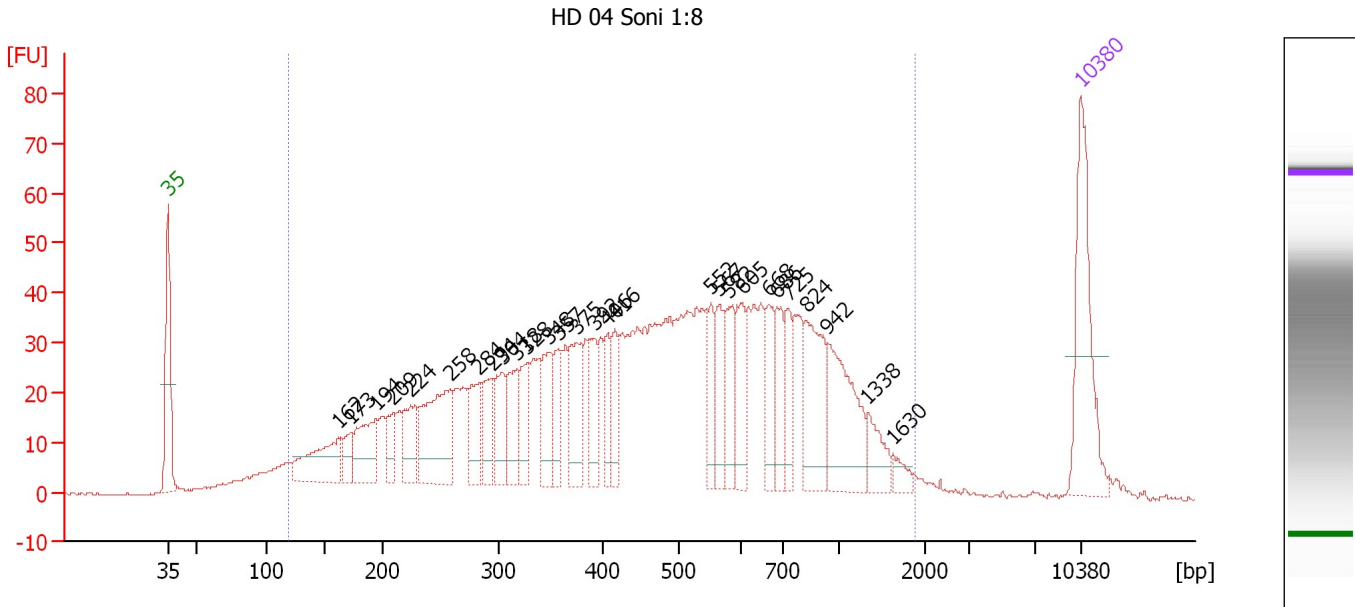
... Region table for sample 7 : HD 03 Soni 1:8

From [bp]	To [bp]	Average Size [bp]	Molarity [pmol/l]	Conc. [pg/μl]	Corr. Area	% of Total	Size distribution in CV [%]	Color
105	1,294	405	11,197.3	2,077.55	1,497.1	94	49.3	■

Assay Class: High Sensitivity DNA Assay
 Data Path: C:\...ents and Settings\Bioanalyzer\2013-12-05\2013-12-05_003.xad

Created: 12/5/2013 12:26:55 PM
 Modified: 12/5/2013 1:19:33 PM

Electropherogram Summary Continued ...



Overall Results for sample 8 : HD 04 Soni 1:8

Number of peaks found: 28 Corr. Area 1: 1,594.4
 Noise: 0.2

Peak table for sample 8 : HD 04 Soni 1:8

Peak	Aligned Migration Time [s]	Size [bp]	Conc. [pg/μl]	Molarity [pmol/l]	Observations
1	43.00	35	125.00	5,411.3	Lower Marker
2	56.07	162	67.39	630.8	
3	57.03	173	20.84	183.0	
4	58.94	194	56.57	441.7	
5	60.28	209	22.44	162.5	
6	61.63	224	41.25	278.5	
7	64.63	258	98.96	580.7	
8	66.88	284	41.56	222.0	
9	67.84	294	31.57	162.5	
10	68.66	304	37.98	189.2	
11	69.79	318	37.81	180.0	
12	70.57	328	35.10	162.2	
13	72.22	348	40.73	177.1	
14	72.92	357	28.74	122.0	
15	74.35	375	49.66	200.7	
16	75.70	392	33.02	127.7	
17	76.70	406	26.90	100.4	
18	77.26	416	27.15	99.0	
19	84.60	552	29.70	81.5	
20	85.30	567	33.30	89.0	
21	86.03	582	30.50	79.4	
22	87.03	605	38.10	95.5	
23	89.12	668	32.17	73.0	
24	89.72	686	31.58	69.8	
25	90.55	725	26.93	56.3	

Assay Class: High Sensitivity DNA Assay
 Data Path: C:\...ents and Settings\Bioanalyzer\2013-12-05\2013-12-05_003.xad

Created: 12/5/2013 12:26:55 PM
 Modified: 12/5/2013 1:19:33 PM

Electropherogram Summary Continued ...

... Peak table for sample 8 : HD 04 Soni 1:8

Peak	Aligned Migration Time [s]	Size [bp]	Conc. [pg/ μ l]	Molarity [pmol/l]	Observations
26	91.94	824	67.07	123.3	
27	93.59	942	75.85	122.0	
28	96.67	1,338	22.72	25.7	
29	98.63	1,630	8.35	7.8	
30	113.00	10,380	75.00	10.9	Upper Marker

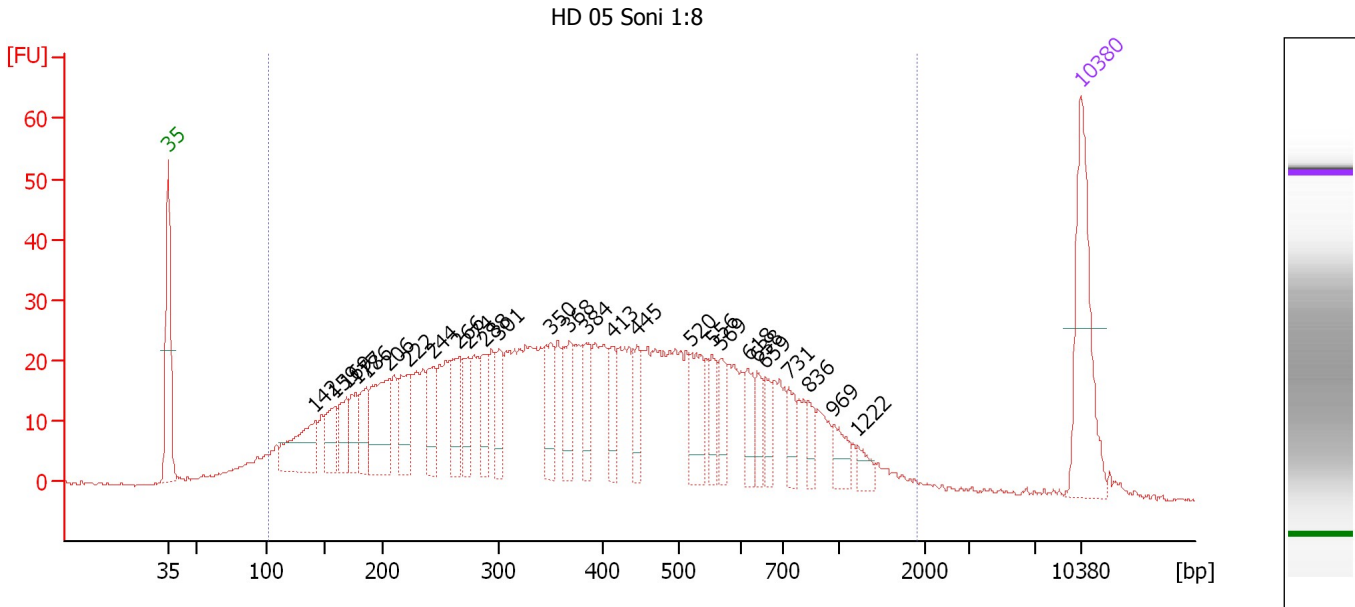
Region table for sample 8 : HD 04 Soni 1:8

From [bp]	To [bp]	Average Size [bp]	Molarity [pmol/l]	Conc. [pg/ μ l]	Corr. Area	% of Total	Size distribution in CV [%]	Color
119	1,887	527	8,515.6	1,943.20	1,594.4	96	56.2	

Assay Class: High Sensitivity DNA Assay
 Data Path: C:\...ents and Settings\Bioanalyzer\2013-12-05\2013-12-05_003.xad

Created: 12/5/2013 12:26:55 PM
 Modified: 12/5/2013 1:19:33 PM

Electropherogram Summary Continued ...



Overall Results for sample 9 : HD 05 Soni 1:8

Number of peaks found: 27 Corr. Area 1: 1,229.2
 Noise: 0.2

Peak table for sample 9 : HD 05 Soni 1:8

Peak	Aligned Migration Time [s]	Size [bp]	Conc. [pg/μl]	Molarity [pmol/l]	Observations
1	43.00	35	125.00	5,411.3	Lower Marker
2	54.27	142	66.51	710.9	
3	55.80	159	34.68	330.9	
4	56.67	169	30.99	278.5	
5	57.41	177	31.23	267.5	
6	58.19	186	32.45	264.8	
7	59.98	206	74.45	548.2	
8	61.46	222	47.02	320.2	
9	63.33	244	35.67	221.8	
10	65.33	266	41.31	235.2	
11	66.03	274	27.99	154.8	
12	67.29	288	27.94	146.8	
13	68.42	301	30.10	151.4	
14	72.34	350	38.47	166.6	
15	73.78	368	39.03	160.8	
16	75.04	384	28.59	112.9	
17	77.09	413	25.06	92.0	
18	78.96	445	22.63	77.0	
19	83.09	520	40.36	117.5	
20	84.79	556	20.23	55.1	
21	85.40	569	20.92	55.7	
22	87.49	618	20.71	50.7	
23	88.14	638	16.70	39.6	
24	88.84	659	16.10	37.0	
25	90.62	731	19.00	39.4	

Assay Class: High Sensitivity DNA Assay
 Data Path: C:\...ents and Settings\Bioanalyzer\2013-12-05\2013-12-05_003.xad


Created: 12/5/2013 12:26:55 PM
 Modified: 12/5/2013 1:19:33 PM

Electropherogram Summary Continued ...

... Peak table for sample 9 : HD 05 Soni 1:8

Peak	Aligned Migration Time [s]	Size [bp]	Conc. [pg/ μ l]	Molarity [pmol/l]	Observations
26	92.10	836	11.59	21.0	
27	93.98	969	16.56	25.9	
28	95.89	1,222	9.49	11.8	
29	▶ 113.00	10,380	75.00	10.9	Upper Marker

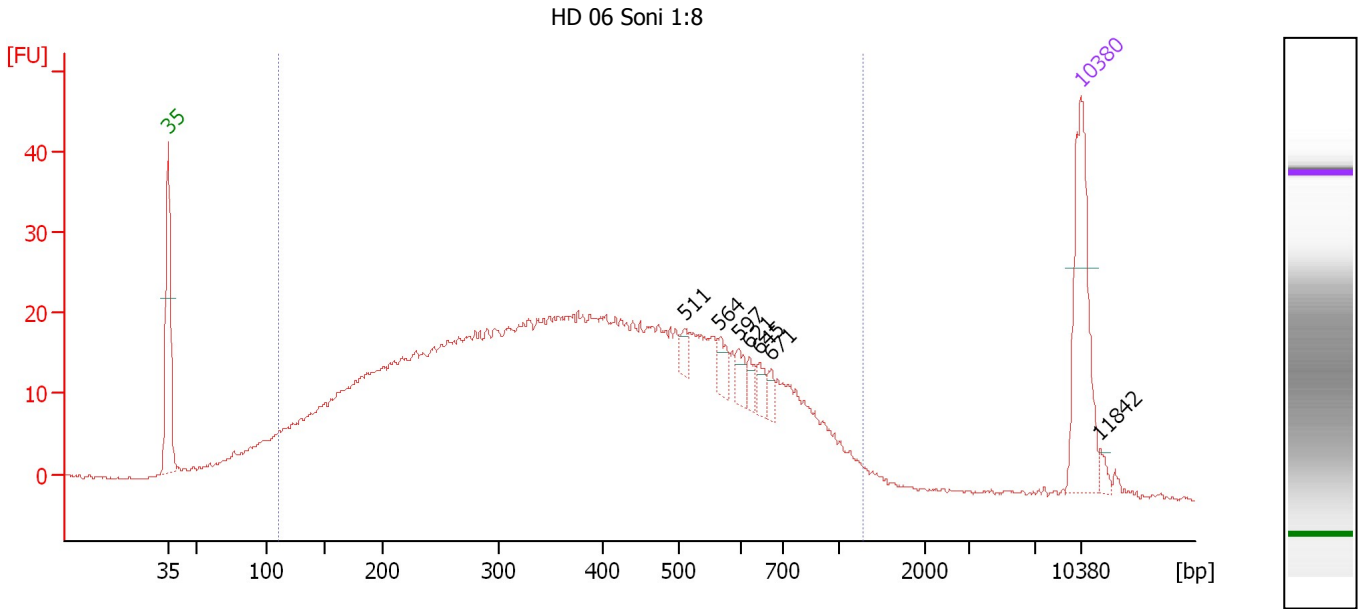
Region table for sample 9 : HD 05 Soni 1:8

From [bp]	To [bp]	Average Size [bp]	Molarity [pmol/l]	Conc. [pg/ μ l]	Corr. Area	% of Total	Size distribution in CV [%]	Color
103	1,902	441	9,827.3	1,867.27	1,229.2	96	59.6	

Assay Class: High Sensitivity DNA Assay
 Data Path: C:\...ents and Settings\Bioanalyzer\2013-12-05\2013-12-05_003.xad

Created: 12/5/2013 12:26:55 PM
 Modified: 12/5/2013 1:19:33 PM

Electropherogram Summary Continued ...



Overall Results for sample 10 : HD 06 Soni 1:8

Number of peaks found: 7 Corr. Area 1: 998.6
 Noise: 0.2

Peak table for sample 10 : HD 06 Soni 1:8

Peak	Aligned Migration Time [s]	Size [bp]	Conc. [pg/μl]	Molarity [pmol/l]	Observations
1	43.00	35	125.00	5,411.3	Lower Marker
2	82.64	511	9.68	28.7	
3	85.17	564	12.29	33.0	
4	86.74	597	10.91	27.7	
5	87.57	621	7.87	19.2	
6	88.36	645	9.35	22.0	
7	89.23	671	7.18	16.2	
8	113.00	10,380	75.00	10.9	Upper Marker
9	114.48	11,842	0.00	0.0	

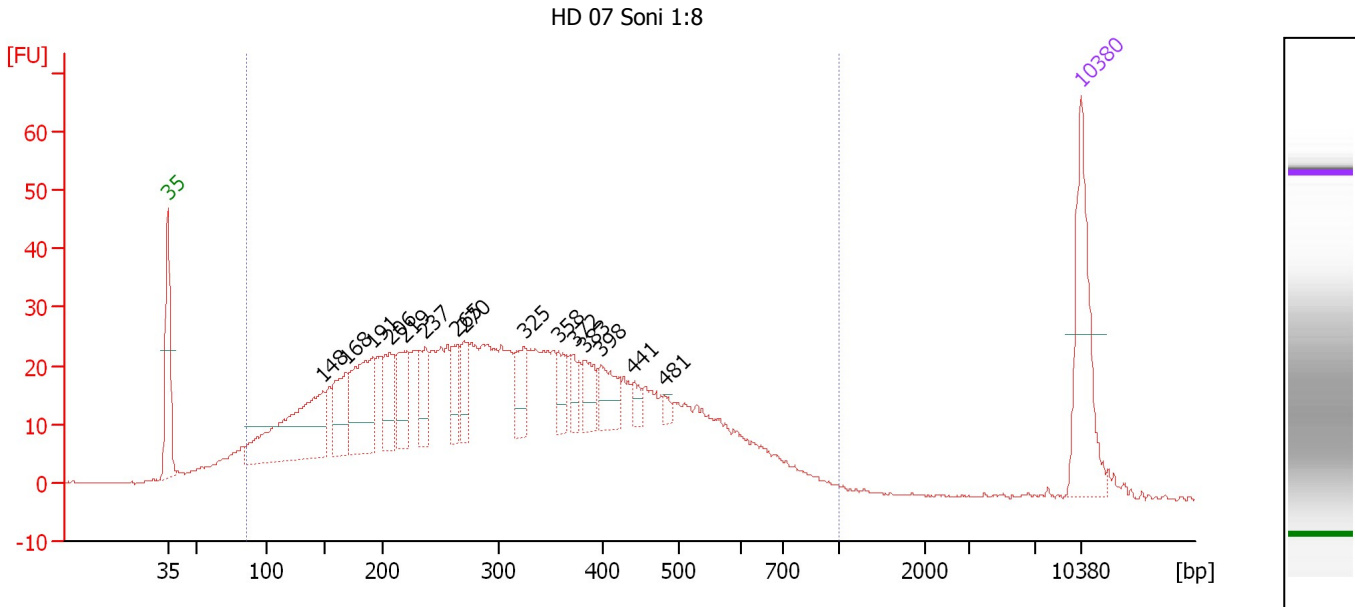
Region table for sample 10 : HD 06 Soni 1:8

From [bp]	To [bp]	Average Size [bp]	Molarity [pmol/l]	Conc. [pg/μl]	Corr. Area	% of Total	Size distribution in CV [%]	Color
110	1,275	409	10,698.5	2,030.21	998.6	93	48.0	Blue

Assay Class: High Sensitivity DNA Assay
 Data Path: C:\...ents and Settings\Bioanalyzer\2013-12-05\2013-12-05_003.xad

Created: 12/5/2013 12:26:55 PM
 Modified: 12/5/2013 1:19:33 PM

Electropherogram Summary Continued ...



Overall Results for sample 11 : HD 07 Soni 1:8

Number of peaks found: 15 Corr. Area 1: 1,138.4
 Noise: 0.2

Peak table for sample 11 : HD 07 Soni 1:8

Peak	Aligned Migration Time [s]	Size [bp]	Conc. [pg/μl]	Molarity [pmol/l]	Observations
1	43.00	35	125.00	5,411.3	Lower Marker
2	54.83	148	160.69	1,645.9	
3	56.63	168	57.58	518.8	
4	58.65	191	93.53	742.4	
5	60.02	206	45.95	337.6	
6	61.16	219	48.97	338.6	
7	62.74	237	38.84	248.3	
8	65.20	265	27.08	155.0	
9	65.69	270	27.24	152.8	
10	70.31	325	34.35	160.3	
11	72.99	358	22.62	95.7	
12	74.13	372	14.87	60.5	
13	75.01	383	24.88	98.4	
14	76.24	398	31.79	120.9	
15	78.70	441	10.21	35.1	
16	81.03	481	5.37	16.9	
17	113.00	10,380	75.00	10.9	Upper Marker

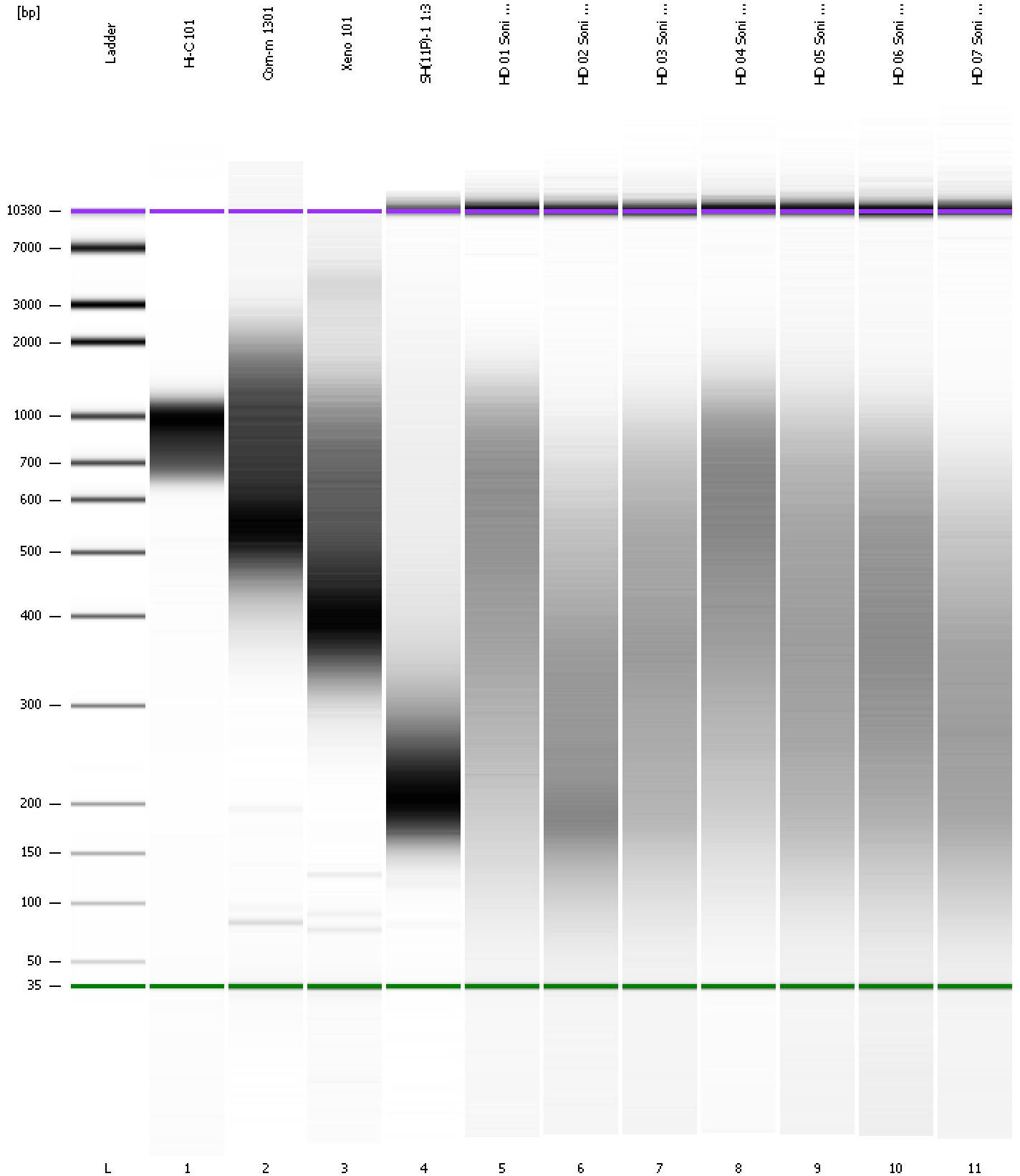
Region table for sample 11 : HD 07 Soni 1:8

From [bp]	To [bp]	Average Size [bp]	Molarity [pmol/l]	Conc. [pg/μl]	Corr. Area	% of Total	Size distribution in CV [%]	Color
86	1,000	328	12,206.4	1,879.21	1,138.4	95	45.8	Blue

Assay Class: High Sensitivity DNA Assay
Data Path: C:\...ents and Settings\Bioanalyzer\2013-12-05\2013-12-05_003.xad

Created: 12/5/2013 12:26:55 PM
Modified: 12/5/2013 1:19:33 PM

Gel Image



Assay Class: High Sensitivity DNA Assay
Data Path: C:\...ents and Settings\Bioanalyzer\2013-12-05\2013-12-05_003.xad

Created: 12/5/2013 12:26:55 PM
Modified: 12/5/2013 1:19:33 PM

Curves

Standard Curve

