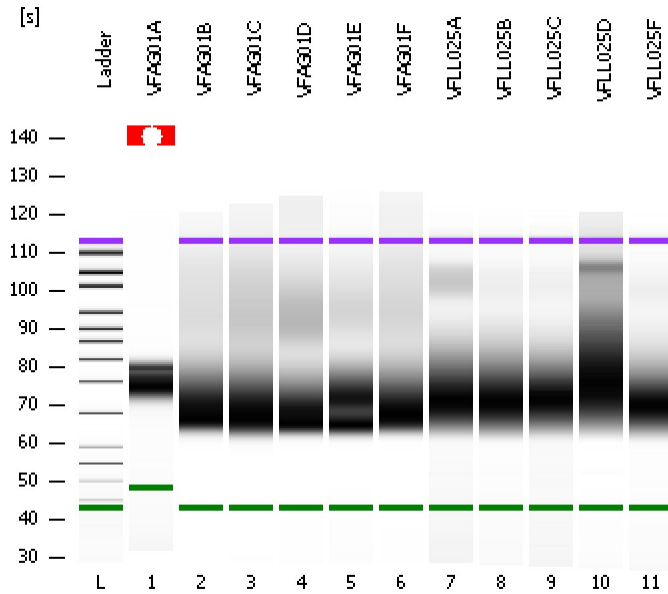


Assay Class: High Sensitivity DNA Assay
Data Path: C:\...ents and Settings\Bioanalyzer\2013-12-05\2013-12-05_005.xad

Created: 12/5/2013 1:28:07 PM
Modified: 12/5/2013 2:22:54 PM

Electrophoresis File Run Summary



Instrument Information:

Instrument Name: DE13701086 Firmware: C.01.069
Serial#: DE13701086 Type: G2938B

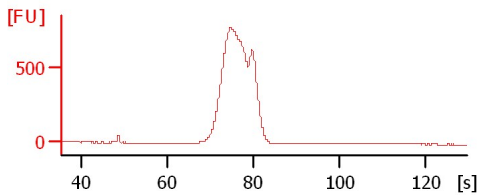
Assay Information:

Assay Origin Path: C:\Program Files\Agilent\2100 bioanalyzer\2100 expert\assays\dsDNA\High Sensitivity DNA.xsy
Assay Class: High Sensitivity DNA Assay
Version: 1.03
Assay Comments: Copyright © 2003-2010 Agilent Technologies

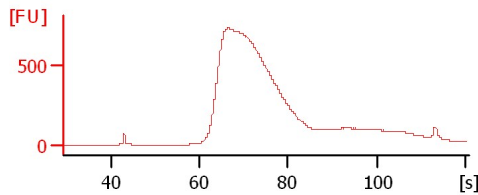
Chip Information:

Chip Lot #:
Reagent Kit Lot #:
Chip Comments:

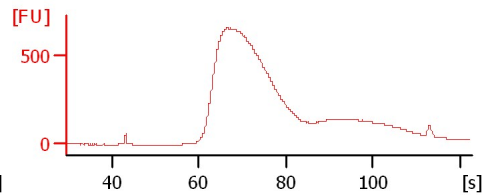
VFAG01A



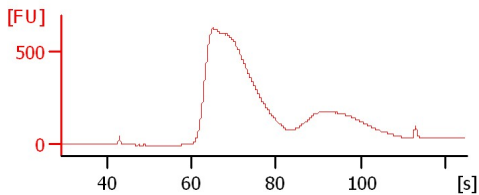
VFAG01B



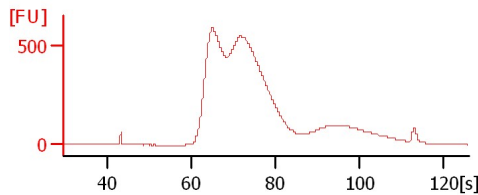
VFAG01C



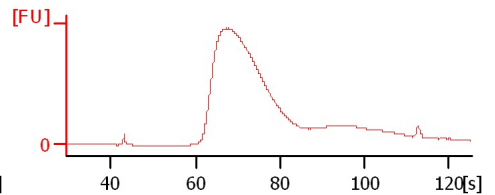
VFAG01D



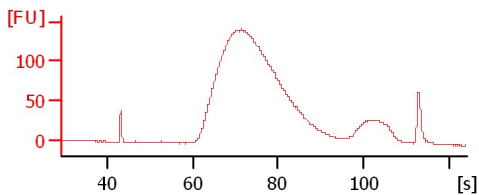
VFAG01E



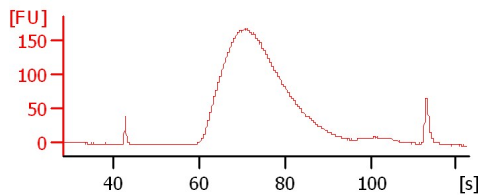
VFAG01F



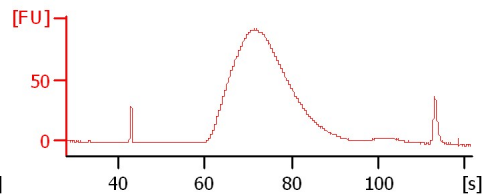
VFLL025A



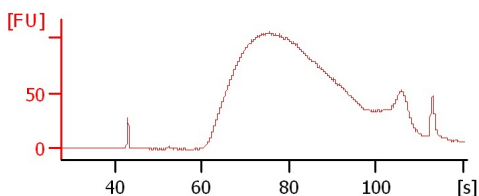
VFLL025B



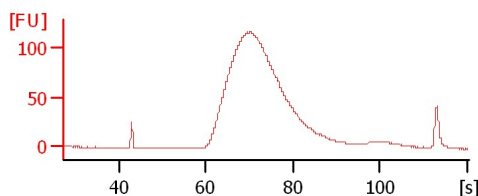
VFLL025C



VFLL025D



VFLL025F



Assay Class: High Sensitivity DNA Assay
Data Path: C:\...ents and Settings\Bioanalyzer\2013-12-05\2013-12-05_005.xad

Created: 12/5/2013 1:28:07 PM
Modified: 12/5/2013 2:22:54 PM

Electrophoresis File Run Summary (Chip Summary)

Sample Name	Sample Comment	Rest. Digest	Status	Observation	Result Label	Result Color
VFAG01A		<input type="checkbox"/>	✓			
VFAG01B		<input type="checkbox"/>	✓			
VFAG01C		<input type="checkbox"/>	✓			
VFAG01D		<input type="checkbox"/>	✓			
VFAG01E		<input type="checkbox"/>	✓			
VFAG01F		<input type="checkbox"/>	✓			
VFLL025A		<input type="checkbox"/>	✓			
VFLL025B		<input type="checkbox"/>	✓			
VFLL025C		<input type="checkbox"/>	✓			
VFLL025D		<input type="checkbox"/>	✓			
VFLL025F		<input type="checkbox"/>	✓			
Ladder		<input type="checkbox"/>	✓			

Chip Lot #

Reagent Kit Lot #

Chip Comments :

Assay Class: High Sensitivity DNA Assay
Data Path: C:\...ents and Settings\Bioanalyzer\2013-12-05\2013-12-05_005.xad

Created: 12/5/2013 1:28:07 PM
Modified: 12/5/2013 2:22:54 PM

Electrophoresis Assay Details

General Analysis Settings

Number of Available Sample and Ladder Wells (Max.) : 12
Minimum Visible Range [s] : 32
Maximum Visible Range [s] : 138
Start Analysis Time Range [s] : 33
End Analysis Time Range [s] : 137.5
Ladder Concentration [pg/ μ l] : 1950
Uses Standard Area for Ladder Fragments
Lower Marker Concentration [pg/ μ l] : 125
Upper Marker Concentration [pg/ μ l] : 75
Used Upper Marker for Quantitation
Standard Curve Fit is Point to Point
Show Data Aligned to Lower and Upper Marker

Integrator Settings

Integration Start Time [s] : 33.05
Integration End Time [s] : 137
Slope Threshold : 0.8
Height Threshold [FU] : 5
Area Threshold : 0.1
Width Threshold [s] : 0.6
Baseline Plateau [s] : 0.5

Filter Settings

Filter Width [s] : 0.5
Polynomial Order : 4

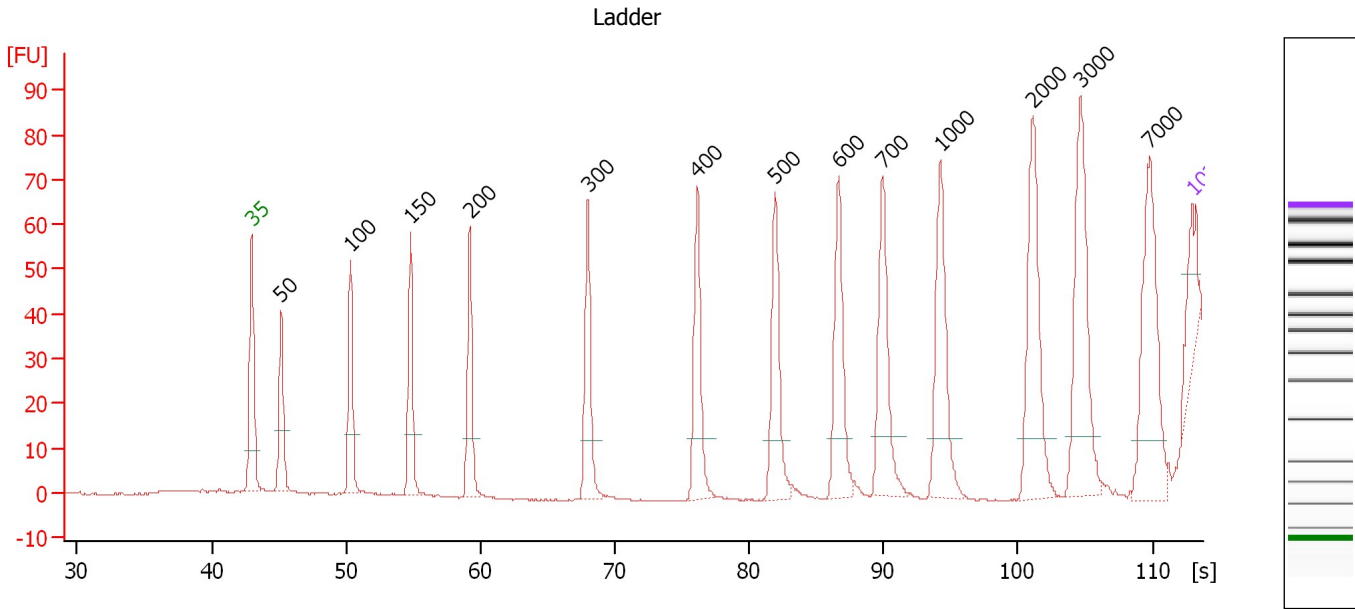
Ladder

Ladder Peak	Size	Area
1	35	160
2	50	210
3	100	208
4	150	221
5	200	242
6	300	270
7	400	305
8	500	306
9	600	336
10	700	321
11	1000	366
12	2000	413
13	3000	411
14	7000	400
15	10380	214

Assay Class: High Sensitivity DNA Assay
 Data Path: C:\...ents and Settings\Bioanalyzer\2013-12-05\2013-12-05_005.xad

Created: 12/5/2013 1:28:07 PM
 Modified: 12/5/2013 2:22:54 PM

Electropherogram Summary



Overall Results for Ladder

Noise: 0.2

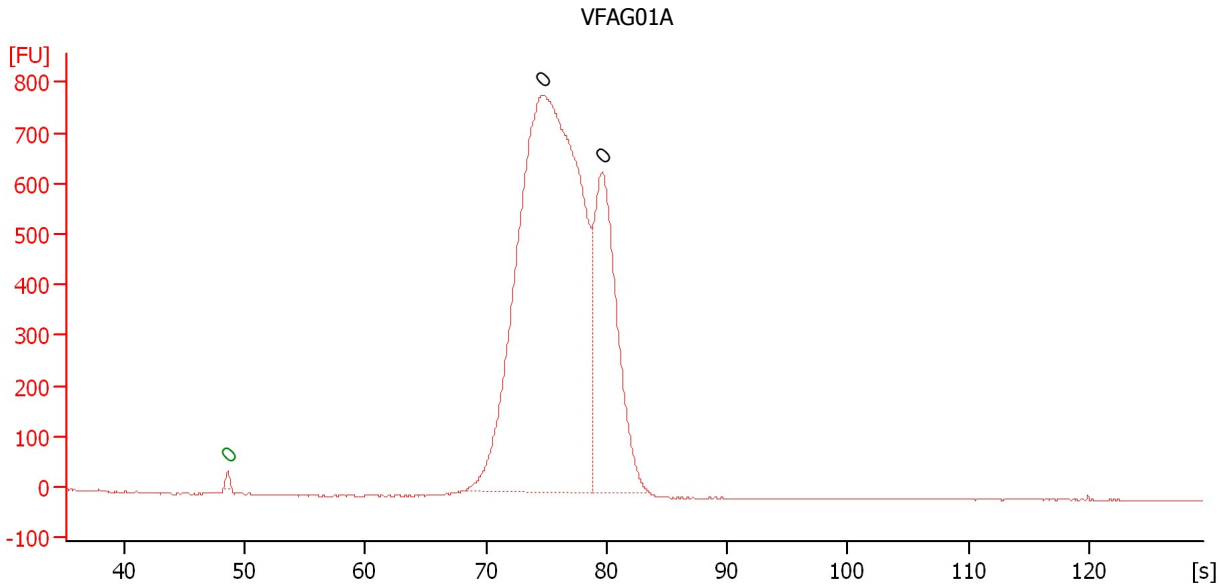
Peak table for Ladder

Peak	Aligned Migration Time [s]	Size [bp]	Conc. [pg/μl]	Molarity [pmol/l]	Observations
1	43.00	35	125.00	5,411.3	Lower Marker
2	45.20	50	150.00	4,545.5	Ladder Peak
3	50.35	100	150.00	2,272.7	Ladder Peak
4	54.83	150	150.00	1,515.2	Ladder Peak
5	59.22	200	150.00	1,136.4	Ladder Peak
6	68.01	300	150.00	757.6	Ladder Peak
7	76.16	400	150.00	568.2	Ladder Peak
8	81.96	500	150.00	454.5	Ladder Peak
9	86.67	600	150.00	378.8	Ladder Peak
10	89.91	700	150.00	324.7	Ladder Peak
11	94.22	1,000	150.00	227.3	Ladder Peak
12	101.13	2,000	150.00	113.6	Ladder Peak
13	104.65	3,000	150.00	75.8	Ladder Peak
14	109.84	7,000	150.00	32.5	Ladder Peak
15	113.00	10,380	75.00	10.9	Upper Marker

Assay Class: High Sensitivity DNA Assay
 Data Path: C:\...ents and Settings\Bioanalyzer\2013-12-05\2013-12-05_005.xad

Created: 12/5/2013 1:28:07 PM
 Modified: 12/5/2013 2:22:54 PM

Electropherogram Summary Continued ...



Setpoint Deviations for sample 1 : VFAG01A

Height Threshold [FU] : 0.01

Overall Results for sample 1 : VFAG01A

Number of peaks found: 2 Noise: 0.4

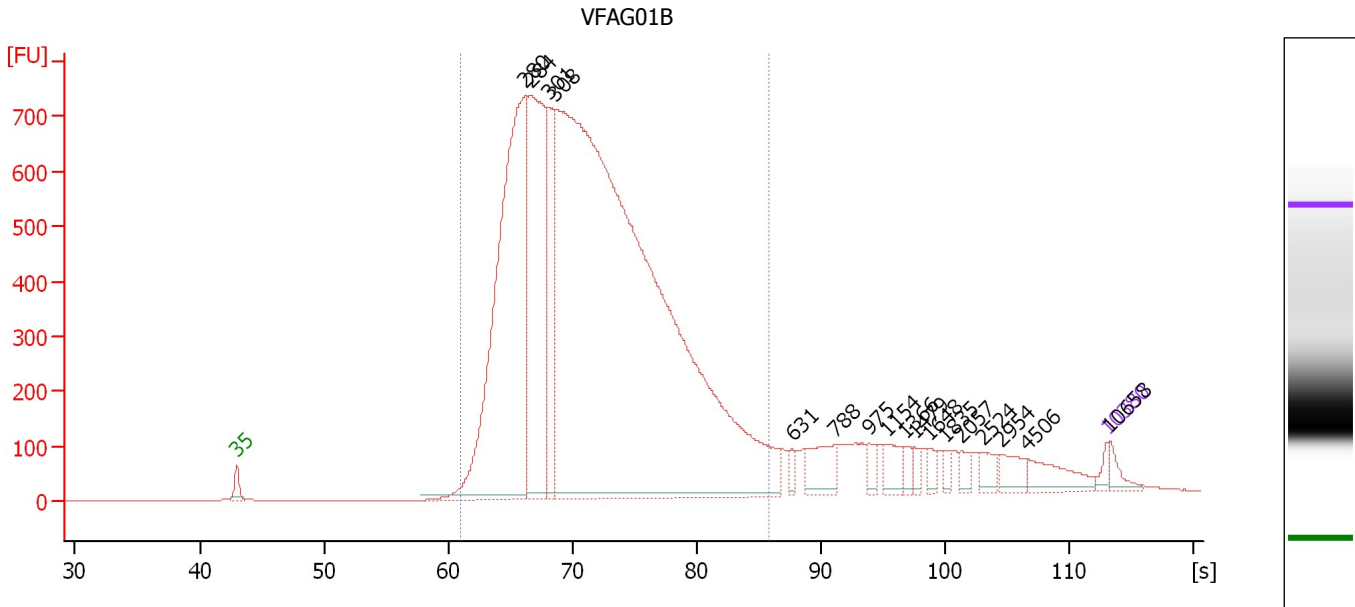
Peak table for sample 1 : VFAG01A

Peak	Aligned Migration Time [s]	Size [bp]	Conc. [pg/μl]	Molarity [pmol/l]	Observations
1	48.60	0	0.00	0.0	Lower Marker
2	74.80	0	0.00	0.0	
3	79.65	0	0.00	0.0	

Assay Class: High Sensitivity DNA Assay
 Data Path: C:\...ents and Settings\Bioanalyzer\2013-12-05\2013-12-05_005.xad

Created: 12/5/2013 1:28:07 PM
 Modified: 12/5/2013 2:22:54 PM

Electropherogram Summary Continued ...



Setpoint Deviations for sample 2 : VFAG01B

Height Threshold [FU] : 10

Overall Results for sample 2 : VFAG01B

Number of peaks found: 17 Corr. Area 1: 14,580.5
 Noise: 0.2

Peak table for sample 2 : VFAG01B

Pea k	Aligned Migration Time [s]	Size [bp]	Conc. [pg/μl]	Molarity [pmol/l]	Observations
1	43.00	35	125.00	5,411.3	Lower Marker
2	66.25	280	7,617.67	41,232.0	
3	66.59	284	4,324.13	23,080.9	
4	68.10	301	1,694.47	8,525.3	
5	68.62	308	24,362.65	120,039.0	
6	87.68	631	108.01	259.3	
7	91.18	788	492.20	945.8	
8	93.86	975	150.03	233.2	
9	95.28	1,154	254.85	334.7	
10	96.75	1,366	127.46	141.3	
11	97.53	1,479	89.79	92.0	
12	98.70	1,648	102.28	94.1	
13	99.99	1,835	89.12	73.6	
14	101.33	2,057	125.28	92.3	
15	102.98	2,524	172.63	103.6	
16	104.49	2,954	220.46	113.1	
17	106.60	4,506	366.15	123.1	
18	113.00	10,380	75.00	10.9	Upper Marker
19	113.26	10,658	0.00	0.0	

Assay Class: High Sensitivity DNA Assay
Data Path: C:\...ents and Settings\Bioanalyzer\2013-12-05\2013-12-05_005.xad

Created: 12/5/2013 1:28:07 PM
Modified: 12/5/2013 2:22:54 PM

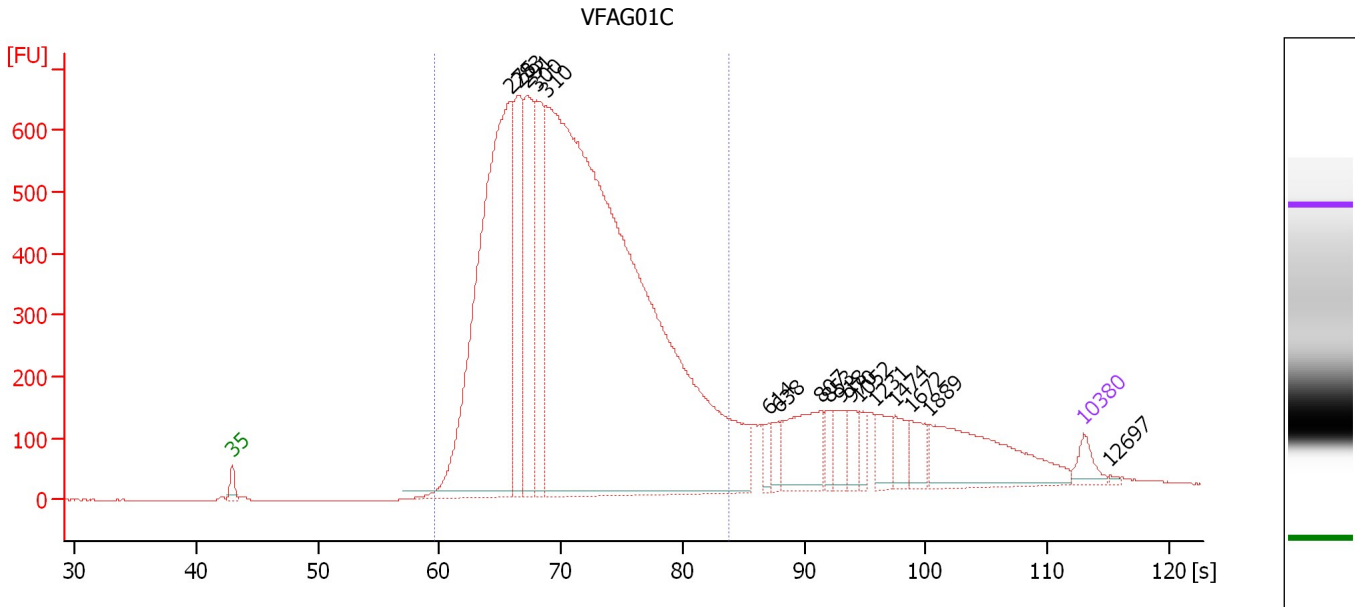
Electropherogram Summary Continued ...**... Region table for sample 2 : VFAG01B**

From [s]	To [s]	Average Size [bp]	Molarity [pmol/l]	Conc. [pg/μl]	Corr. Area % of Total	Size distribution in CV [%]	Color
61.07	85.80	347	158,911.6	34,389.39	14,580.5 87	21.2	

Assay Class: High Sensitivity DNA Assay
 Data Path: C:\...ents and Settings\Bioanalyzer\2013-12-05\2013-12-05_005.xad

Created: 12/5/2013 1:28:07 PM
 Modified: 12/5/2013 2:22:54 PM

Electropherogram Summary Continued ...



Setpoint Deviations for sample 3 : VFAG01C

Height Threshold [FU] : 10

Overall Results for sample 3 : VFAG01C

Number of peaks found: 17 Corr. Area 1: 13,308.4
 Noise: 0.4


Peak table for sample 3 : VFAG01C

Pea k	Aligned Migration Time [s]	Size [bp]	Conc. [pg/μl]	Molarity [pmol/l]	Observations
1	43.00	35	125.00	5,411.3	Lower Marker
2	65.83	275	3,328.24	18,323.1	
3	66.54	283	1,012.03	5,413.4	
4	67.20	291	947.61	4,937.5	
5	68.04	300	871.76	4,397.5	
6	68.84	310	8,692.60	42,469.9	
7	87.12	614	85.27	210.5	
8	87.91	638	87.38	207.4	
9	91.45	807	388.67	729.6	
10	92.11	853	76.69	136.2	
11	93.04	918	118.80	196.1	
12	93.79	970	99.65	155.7	
13	94.58	1,052	72.63	104.6	
14	95.82	1,231	141.42	174.0	
15	97.50	1,474	116.84	120.1	
16	98.87	1,672	116.49	105.6	
17	100.37	1,889	558.01	447.5	
18	113.00	10,380	75.00	10.9	Upper Marker
19	115.16	12,697	0.00	0.0	

Assay Class: High Sensitivity DNA Assay
Data Path: C:\...ents and Settings\Bioanalyzer\2013-12-05\2013-12-05_005.xad

Created: 12/5/2013 1:28:07 PM
Modified: 12/5/2013 2:22:54 PM

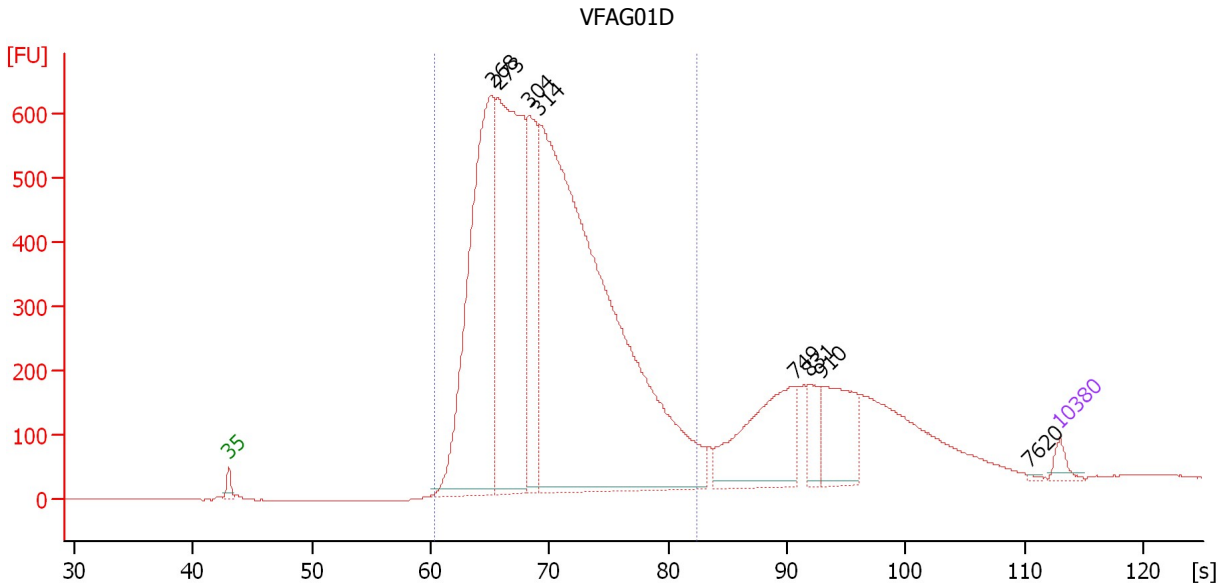
Electropherogram Summary Continued ...**... Region table for sample 3 : VFAG01C**

From [s]	To [s]	Average Size [bp]	Molarity [pmol/l]	Conc. [pg/μl]	Corr. Area % of Total	Size distribution in CV [%]	Co lor
59.56	83.87	338	63,506.3	13,371.51	13,308.4 82	20.8	

Assay Class: High Sensitivity DNA Assay
 Data Path: C:\...ents and Settings\Bioanalyzer\2013-12-05\2013-12-05_005.xad

Created: 12/5/2013 1:28:07 PM
 Modified: 12/5/2013 2:22:54 PM

Electropherogram Summary Continued ...



Setpoint Deviations for sample 4 : VFAG01D

Height Threshold [FU] : 10

Overall Results for sample 4 : VFAG01D

Number of peaks found: 8 Corr. Area 1: 10,792.9
 Noise: 0.7

Peak table for sample 4 : VFAG01D

Peak	Aligned Migration Time [s]	Size [bp]	Conc. [pg/μl]	Molarity [pmol/l]	Observations
1	43.00	35	125.00	5,411.3	Lower Marker
2	65.16	268	4,365.97	24,726.2	
3	65.66	273	4,222.41	23,417.9	
4	68.32	304	1,541.02	7,685.0	
5	69.18	314	9,756.98	47,026.1	
6	90.62	749	1,251.25	2,530.0	
7	91.79	831	257.48	469.4	
8	92.92	910	693.97	1,155.9	
9	110.42	7,620	10.16	2.0	
10	113.00	10,380	75.00	10.9	Upper Marker

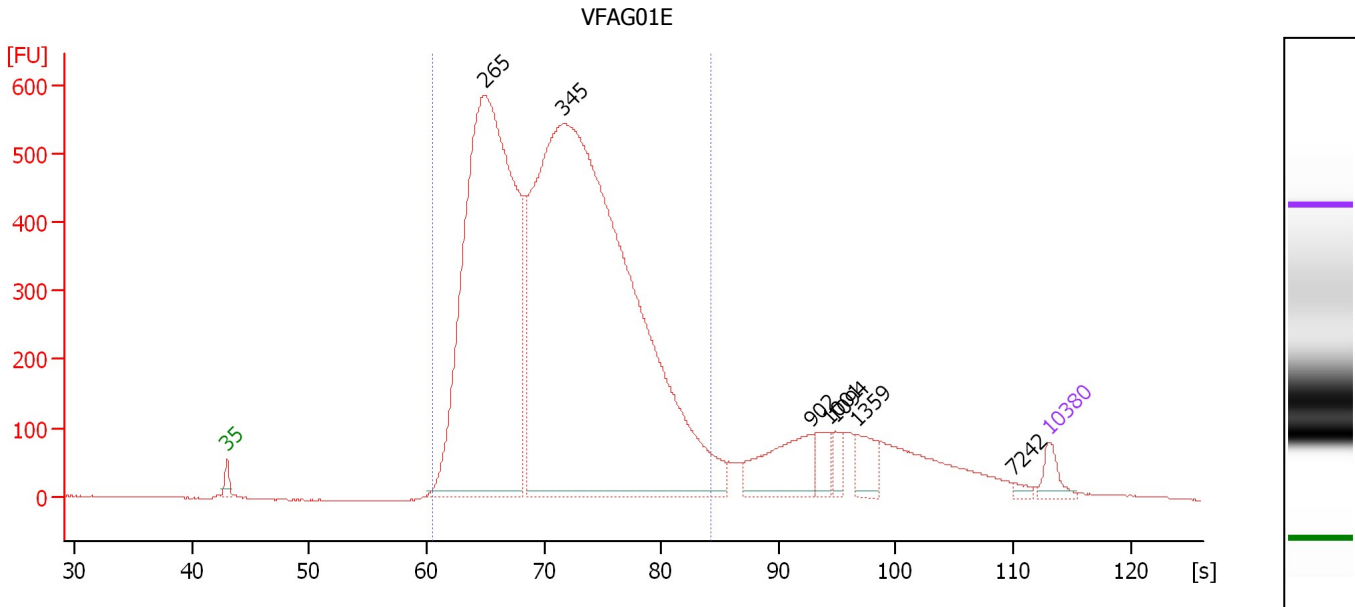
Region table for sample 4 : VFAG01D

From [s]	To [s]	Average Size [bp]	Molarity [pmol/l]	Conc. [pg/μl]	Corr. Area	% of Total	Size distribution in CV [%]	Color
60.41	82.48	325	89,514.7	18,373.78	10,792.9	79	18.5	Blue

Assay Class: High Sensitivity DNA Assay
 Data Path: C:\...ents and Settings\Bioanalyzer\2013-12-05\2013-12-05_005.xad

Created: 12/5/2013 1:28:07 PM
 Modified: 12/5/2013 2:22:54 PM

Electropherogram Summary Continued ...



Setpoint Deviations for sample 5 : VFAG01E

Height Threshold [FU] : 10

Overall Results for sample 5 : VFAG01E

Number of peaks found: 7 Corr. Area 1: 11,922.4
 Noise: 0.7

Peak table for sample 5 : VFAG01E

Peak	Aligned Migration Time [s]	Size [bp]	Conc. [pg/μl]	Molarity [pmol/l]	Observations
1	43.00	35	125.00	5,411.3	Lower Marker
2	64.98	265	5,176.75	29,547.3	
3	71.66	345	7,734.93	33,993.9	
4	92.81	902	401.60	674.7	
5	94.23	1,001	118.92	180.0	
6	94.87	1,094	70.11	97.1	
7	96.70	1,359	141.29	157.5	
8	110.07	7,242	23.43	4.9	
9	113.00	10,380	75.00	10.9	Upper Marker

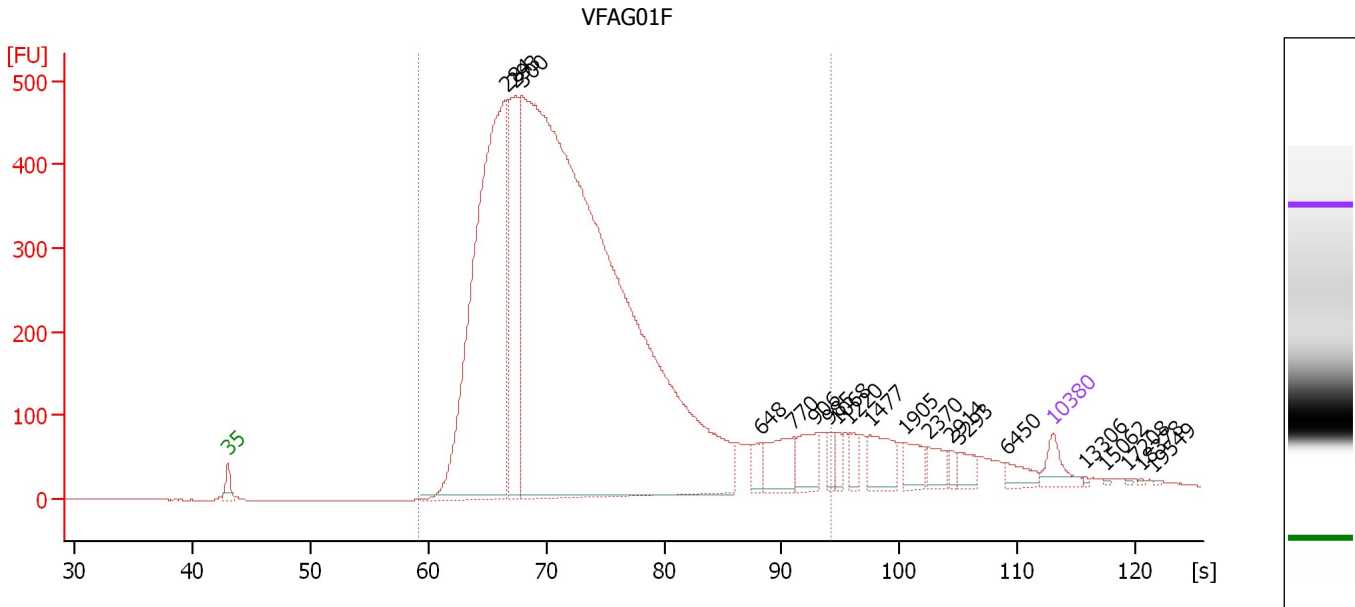
Region table for sample 5 : VFAG01E

From [s]	To [s]	Average Size [bp]	Molarity [pmol/l]	Conc. [pg/μl]	Corr. Area % of Total	Size distribution in CV [%]	Color
60.48	84.21	341	59,223.1	12,569.42	11,922.4 86	20.5	Blue

Assay Class: High Sensitivity DNA Assay
 Data Path: C:\...ents and Settings\Bioanalyzer\2013-12-05\2013-12-05_005.xad

Created: 12/5/2013 1:28:07 PM
 Modified: 12/5/2013 2:22:54 PM

Electropherogram Summary Continued ...



Overall Results for sample 6 : VFAG01F

Number of peaks found: 20 Corr. Area 1: 9,664.6
 Noise: 0.3

Peak table for sample 6 : VFAG01F

Peak	Aligned Migration Time [s]	Size [bp]	Conc. [pg/μl]	Molarity [pmol/l]	Observations
1	43.00	35	125.00	5,411.3	Lower Marker
2	66.64	284	2,978.91	15,872.3	
3	67.41	293	881.07	4,553.5	
4	68.00	300	8,667.24	43,787.4	
5	88.22	648	70.96	165.9	
6	90.91	770	197.79	389.3	
7	92.87	906	142.36	238.1	
8	94.01	985	48.99	75.3	
9	94.69	1,068	47.53	67.4	
10	95.74	1,220	51.35	63.8	
11	97.52	1,477	137.97	141.6	
12	100.48	1,905	86.99	69.2	
13	102.43	2,370	72.20	46.2	
14	104.35	2,914	26.47	13.8	
15	105.03	3,293	57.55	26.5	
16	109.13	6,450	53.13	12.5	
17	113.00	10,380	75.00	10.9	Upper Marker
18	115.73	13,306	0.00	0.0	
19	117.37	15,062	0.00	0.0	
20	119.38	17,208	0.00	0.0	
21	120.47	18,378	0.00	0.0	
22	121.56	19,549	0.00	0.0	

Assay Class: High Sensitivity DNA Assay
Data Path: C:\...ents and Settings\Bioanalyzer\2013-12-05\2013-12-05_005.xad

Created: 12/5/2013 1:28:07 PM
Modified: 12/5/2013 2:22:54 PM

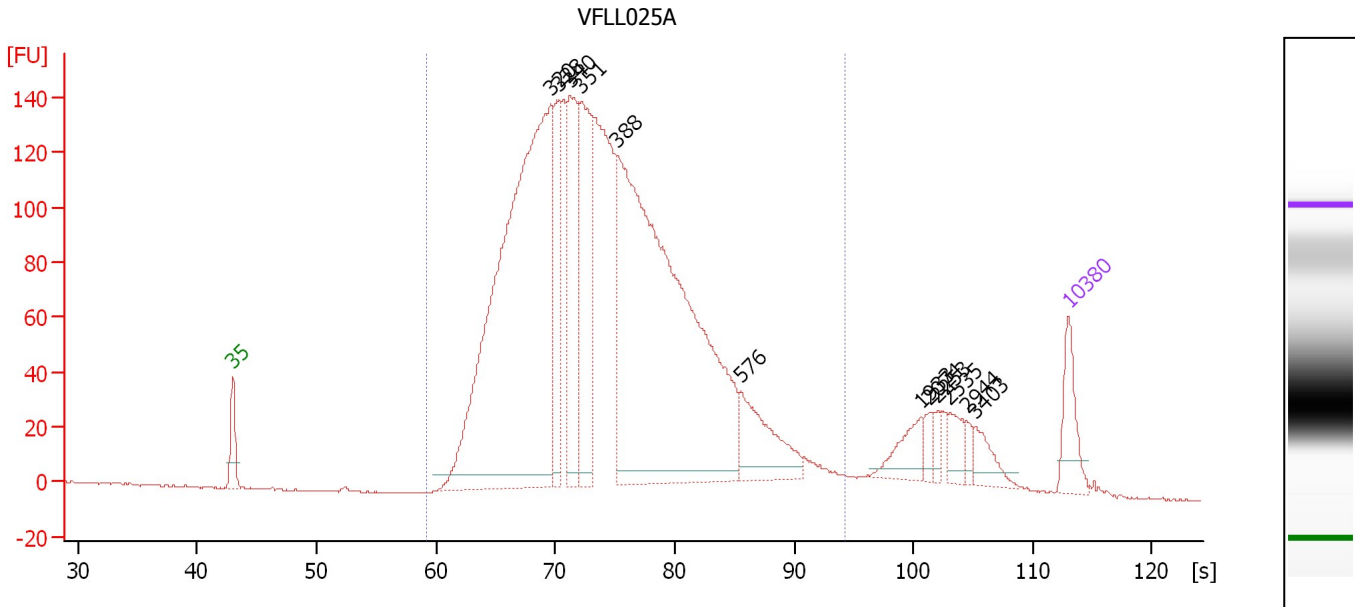
Electropherogram Summary Continued ...**... Region table for sample 6 : VFAG01F**

From [s]	To [s]	Average Size [bp]	Molarity [pmol/l]	Conc. [pg/μl]	Corr. Area % of Total	Size distribution in CV [%]	Co lor
59.22	94.22	375	53,632.2	11,856.13	9,664.6	92	35.4

Assay Class: High Sensitivity DNA Assay
 Data Path: C:\...ents and Settings\Bioanalyzer\2013-12-05\2013-12-05_005.xad

Created: 12/5/2013 1:28:07 PM
 Modified: 12/5/2013 2:22:54 PM

Electropherogram Summary Continued ...



Overall Results for sample 7 : VFL025A

Number of peaks found: 12 Corr. Area 1: 3,253.1
 Noise: 0.3

Peak table for sample 7 : VFL025A

Peak	Aligned Migration Time [s]	Size [bp]	Conc. [pg/μl]	Molarity [pmol/l]	Observations
1	43.00	35	125.00	5,411.3	Lower Marker
2	69.63	320	1,765.70	8,363.3	
3	70.26	328	204.23	944.5	
4	71.25	340	322.02	1,436.0	
5	72.20	351	407.97	1,759.3	
6	75.17	388	1,659.43	6,483.8	
7	85.56	576	174.73	459.3	
8	100.67	1,933	61.90	48.5	
9	101.39	2,074	22.11	16.2	
10	102.02	2,253	17.53	11.8	
11	103.01	2,535	39.67	23.7	
12	104.45	2,944	14.93	7.7	
13	105.17	3,403	46.01	20.5	
14	113.00	10,380	75.00	10.9	Upper Marker

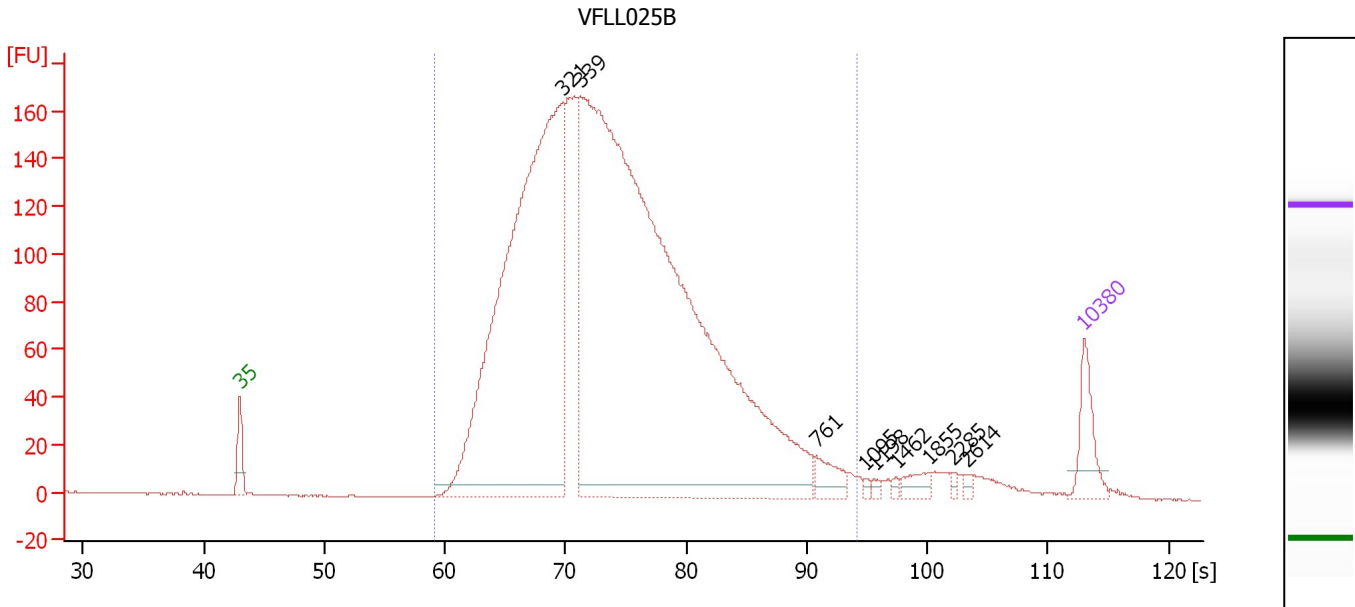
Region table for sample 7 : VFL025A

From [s]	To [s]	Average Size [bp]	Molarity [pmol/l]	Conc. [pg/μl]	Corr. Area % of Total	Size distribution in CV [%]	Color
59.22	94.22	391	23,468.7	5,506.80	3,253.1 92	28.9	Blue

Assay Class: High Sensitivity DNA Assay
 Data Path: C:\...ents and Settings\Bioanalyzer\2013-12-05\2013-12-05_005.xad

Created: 12/5/2013 1:28:07 PM
 Modified: 12/5/2013 2:22:54 PM

Electropherogram Summary Continued ...



Overall Results for sample 8 : VFLLO25B

Number of peaks found: 9 Corr. Area 1: 3,796.8
 Noise: 0.2

Peak table for sample 8 : VFLLO25B

Peak	Aligned Migration Time [s]	Size [bp]	Conc. [pg/μl]	Molarity [pmol/l]	Observations
1	43.00	35	125.00	5,411.3	Lower Marker
2	69.72	321	2,027.20	9,570.6	
3	71.19	339	3,606.56	16,121.3	
4	90.78	761	56.08	111.7	
5	94.88	1,095	6.59	9.1	
6	95.59	1,198	6.64	8.4	
7	97.41	1,462	6.96	7.2	
8	100.13	1,855	26.84	21.9	
9	102.13	2,285	6.92	4.6	
10	103.29	2,614	7.39	4.3	
11	113.00	10,380	75.00	10.9	Upper Marker

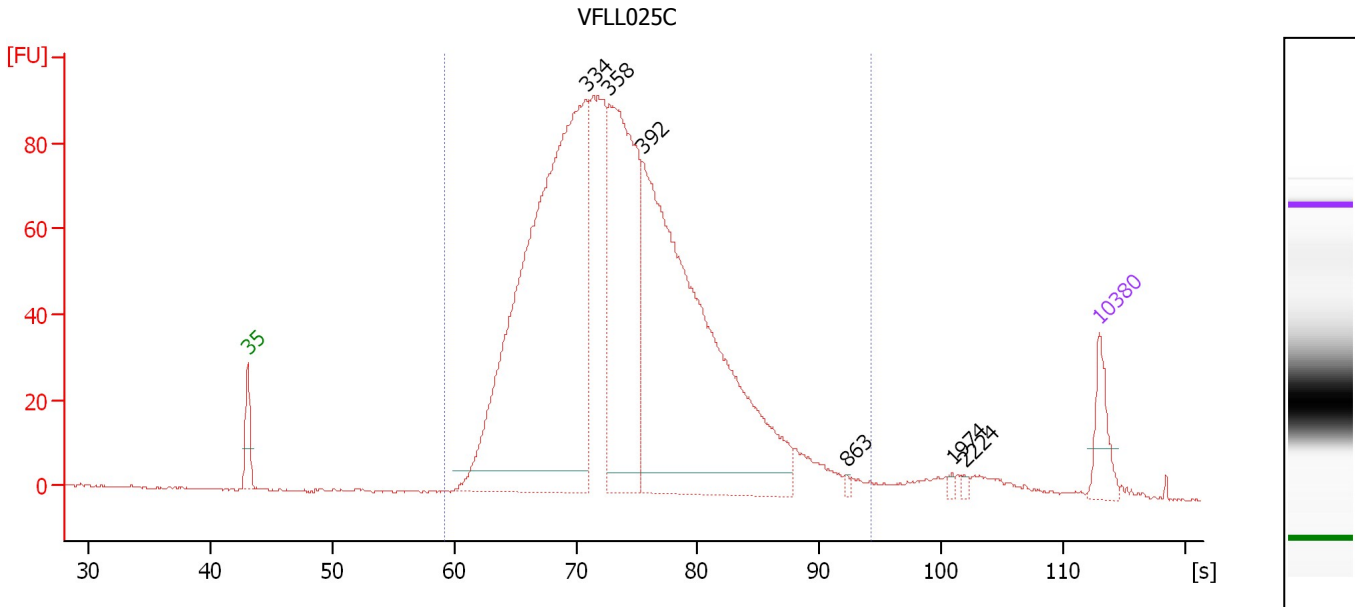
Region table for sample 8 : VFLLO25B

From [s]	To [s]	Average Size [bp]	Molarity [pmol/l]	Conc. [pg/μl]	Corr. Area % of Total	Size distribution in CV [%]	Color
59.22	94.22	387	24,970.7	5,774.87	3,796.8 97	29.8	Blue

Assay Class: High Sensitivity DNA Assay
 Data Path: C:\...ents and Settings\Bioanalyzer\2013-12-05\2013-12-05_005.xad

Created: 12/5/2013 1:28:07 PM
 Modified: 12/5/2013 2:22:54 PM

Electropherogram Summary Continued ...



Overall Results for sample 9 : VFL025C

Number of peaks found: 6 Corr. Area 1: 1,952.2
 Noise: 0.2

Peak table for sample 9 : VFL025C

Peak	Aligned Migration Time [s]	Size [bp]	Conc. [pg/μl]	Molarity [pmol/l]	Observations
1	43.00	35	125.00	5,411.3	Lower Marker
2	70.81	334	2,203.90	9,989.2	
3	72.75	358	931.56	3,941.4	
4	75.48	392	1,734.32	6,708.9	
5	92.26	863	7.07	12.4	
6	100.95	1,974	6.41	4.9	
7	101.92	2,224	5.87	4.0	
8	113.00	10,380	75.00	10.9	Upper Marker

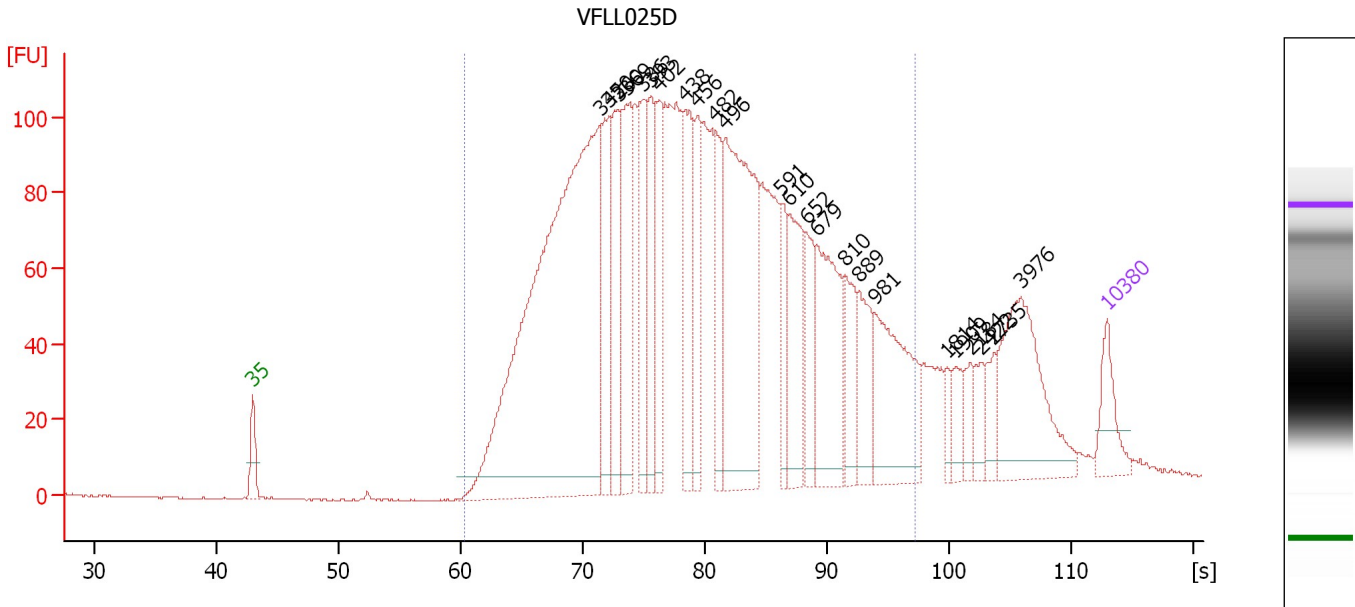
Region table for sample 9 : VFL025C

From [s]	To [s]	Average Size [bp]	Molarity [pmol/l]	Conc. [pg/μl]	Corr. Area % of Total	Size distribution in CV [%]	Color
59.22	94.22	382	24,186.4	5,614.33	1,952.2 97	27.1	Blue

Assay Class: High Sensitivity DNA Assay
 Data Path: C:\...ents and Settings\Bioanalyzer\2013-12-05\2013-12-05_005.xad

Created: 12/5/2013 1:28:07 PM
 Modified: 12/5/2013 2:22:54 PM

Electropherogram Summary Continued ...



Overall Results for sample 10 : VFL025D

Number of peaks found: 24 Corr. Area 1: 3,183.6
 Noise: 0.2


Peak table for sample 10 : VFL025D

Peak	Aligned Migration Time [s]	Size [bp]	Conc. [pg/μl]	Molarity [pmol/l]	Observations
1	43.00	35	125.00	5,411.3	Lower Marker
2	71.47	342	1,942.83	8,597.5	
3	72.13	350	252.90	1,093.3	
4	72.92	360	237.77	1,000.2	
5	73.62	369	305.79	1,256.2	
6	75.03	386	244.02	957.5	
7	75.60	393	173.87	670.1	
8	76.31	402	182.79	688.1	
9	78.37	438	233.51	807.4	
10	79.39	456	179.25	596.1	
11	80.93	482	155.66	489.1	
12	81.72	496	704.97	2,153.9	
13	86.25	591	106.32	272.5	
14	87.00	610	213.01	529.0	
15	88.36	652	133.82	310.9	
16	89.24	679	314.62	701.6	
17	91.49	810	122.75	229.7	
18	92.63	889	136.79	233.1	
19	93.95	981	286.28	442.1	
20	99.84	1,814	28.41	23.7	
21	100.50	1,909	45.03	35.7	
22	101.78	2,184	40.57	28.1	
23	102.62	2,422	45.33	28.4	
24	103.72	2,735	46.76	25.9	
25	105.92	3,976	292.44	111.5	


Assay Class: High Sensitivity DNA Assay
Data Path: C:\...ents and Settings\Bioanalyzer\2013-12-05\2013-12-05_005.xad

Created: 12/5/2013 1:28:07 PM
Modified: 12/5/2013 2:22:54 PM

Electropherogram Summary Continued ...**... Peak table for sample 10 : VFLL025D**

Peak	Aligned Migration Time [s]	Size [bp]	Conc. [pg/ μ l]	Molarity [pmol/l]	Observations
26	 113.00	10,380	75.00	10.9	Upper Marker

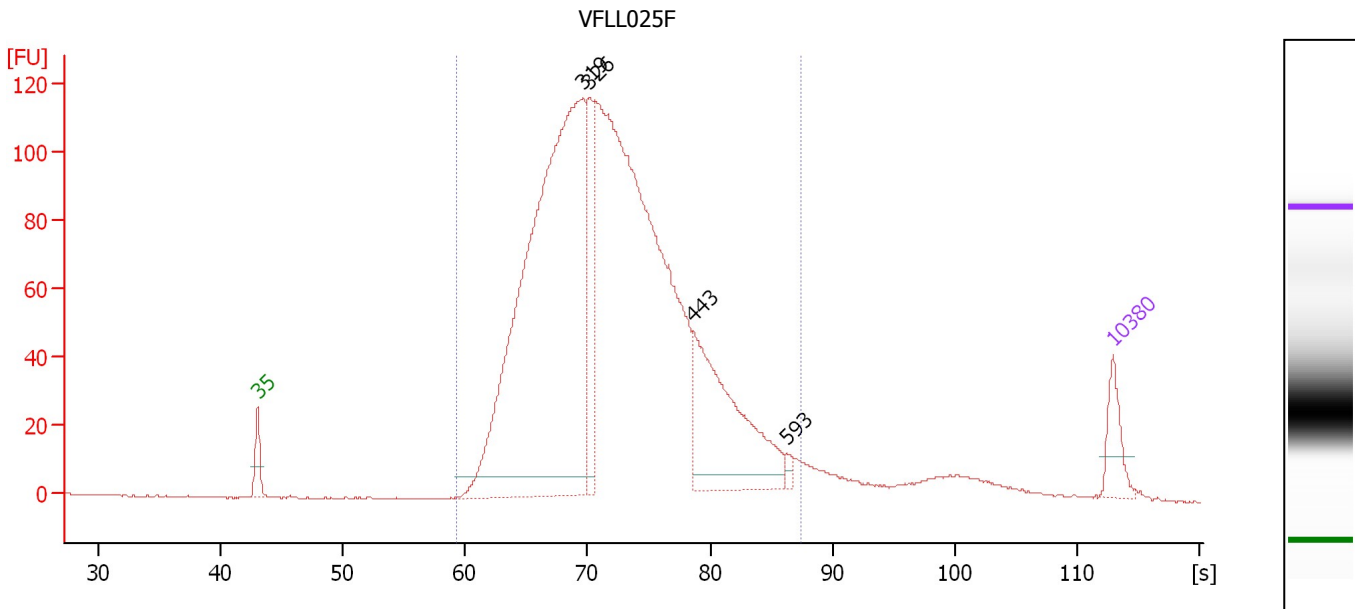
Region table for sample 10 : VFLL025D

From [s]	To [s]	Average Size [bp]	Molarity [pmol/l]	Conc. [pg/ μ l]	Corr. Area % of Total	Size distribution in CV [%]	Color
60.40	97.22	502	26,159.9	7,115.05	3,183.6	89	44.1 

Assay Class: High Sensitivity DNA Assay
 Data Path: C:\...ents and Settings\Bioanalyzer\2013-12-05\2013-12-05_005.xad

Created: 12/5/2013 1:28:07 PM
 Modified: 12/5/2013 2:22:54 PM

Electropherogram Summary Continued ...



Overall Results for sample 11 : VFL025F

Number of peaks found: 4 Corr. Area 1: 2,248.5
 Noise: 0.2

Peak table for sample 11 : VFL025F

Peak	Aligned Migration Time [s]	Size [bp]	Conc. [pg/μl]	Molarity [pmol/l]	Observations
1	43.00	35	125.00	5,411.3	Lower Marker
2	69.59	319	2,463.41	11,689.2	
3	70.16	326	268.46	1,246.5	
4	78.64	443	592.31	2,027.1	
5	86.33	593	15.13	38.7	
6	113.00	10,380	75.00	10.9	Upper Marker

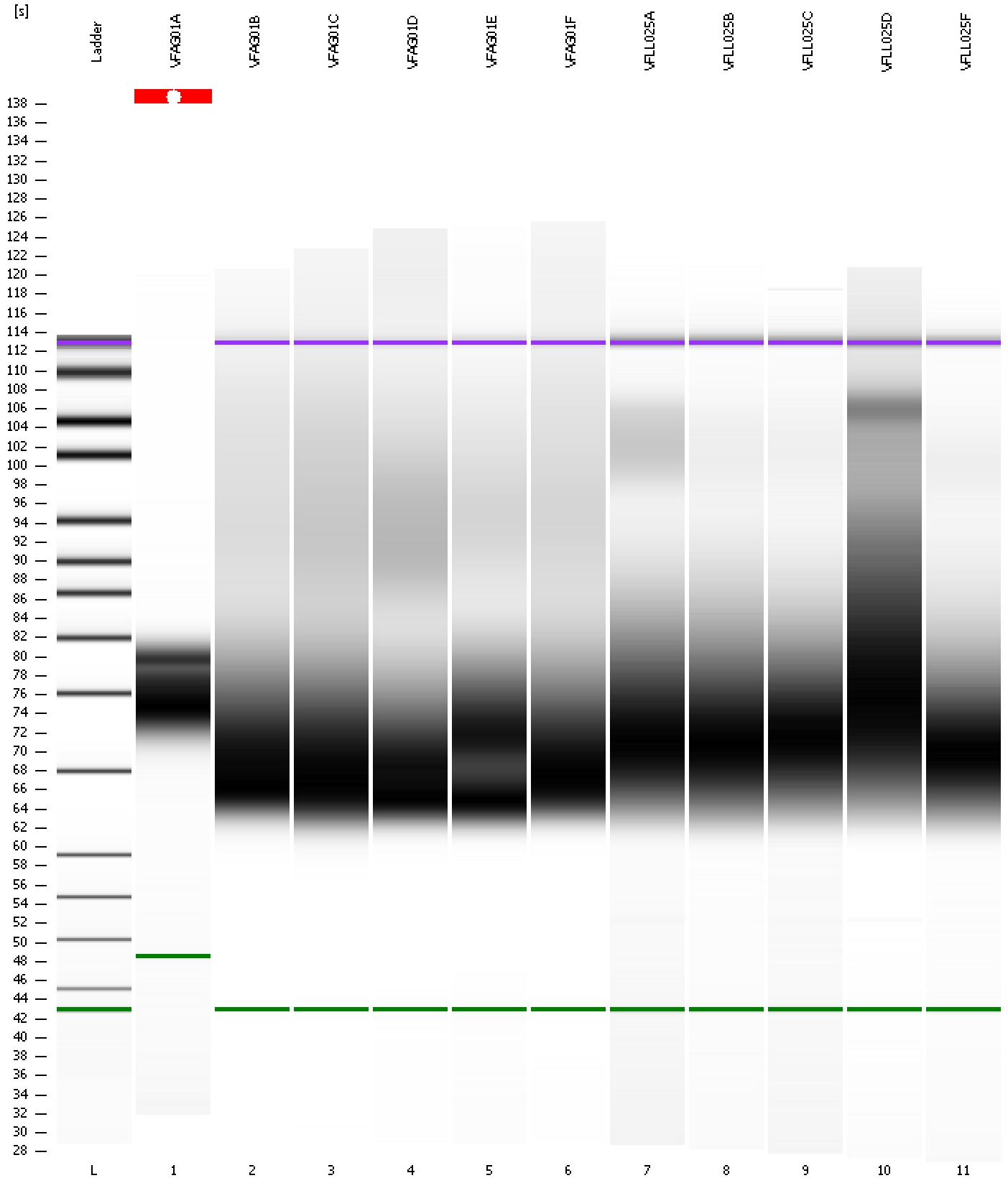
Region table for sample 11 : VFL025F

From [s]	To [s]	Average Size [bp]	Molarity [pmol/l]	Conc. [pg/μl]	Corr. Area % of Total	Size distribution in CV [%]	Color
59.22	87.40	355	27,035.4	5,952.21	2,248.5 95	22.0	Blue

Assay Class: High Sensitivity DNA Assay
Data Path: C:\...ents and Settings\Bioanalyzer\2013-12-05\2013-12-05_005.xad

Created: 12/5/2013 1:28:07 PM
Modified: 12/5/2013 2:22:54 PM

Gel Image



Assay Class: High Sensitivity DNA Assay
Data Path: C:\...ents and Settings\Bioanalyzer\2013-12-05\2013-12-05_005.xad

Created: 12/5/2013 1:28:07 PM
Modified: 12/5/2013 2:22:54 PM

Curves

Standard Curve

