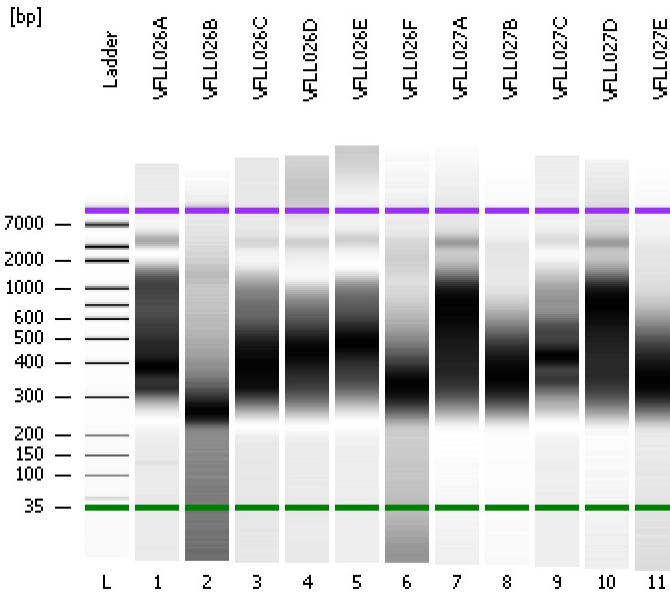


Assay Class: High Sensitivity DNA Assay
Data Path: C:\...ents and Settings\Bioanalyzer\2013-12-05\2013-12-05_006.xad

Created: 12/5/2013 2:11:22 PM
Modified: 12/5/2013 3:03:12 PM

Electrophoresis File Run Summary



Instrument Information:

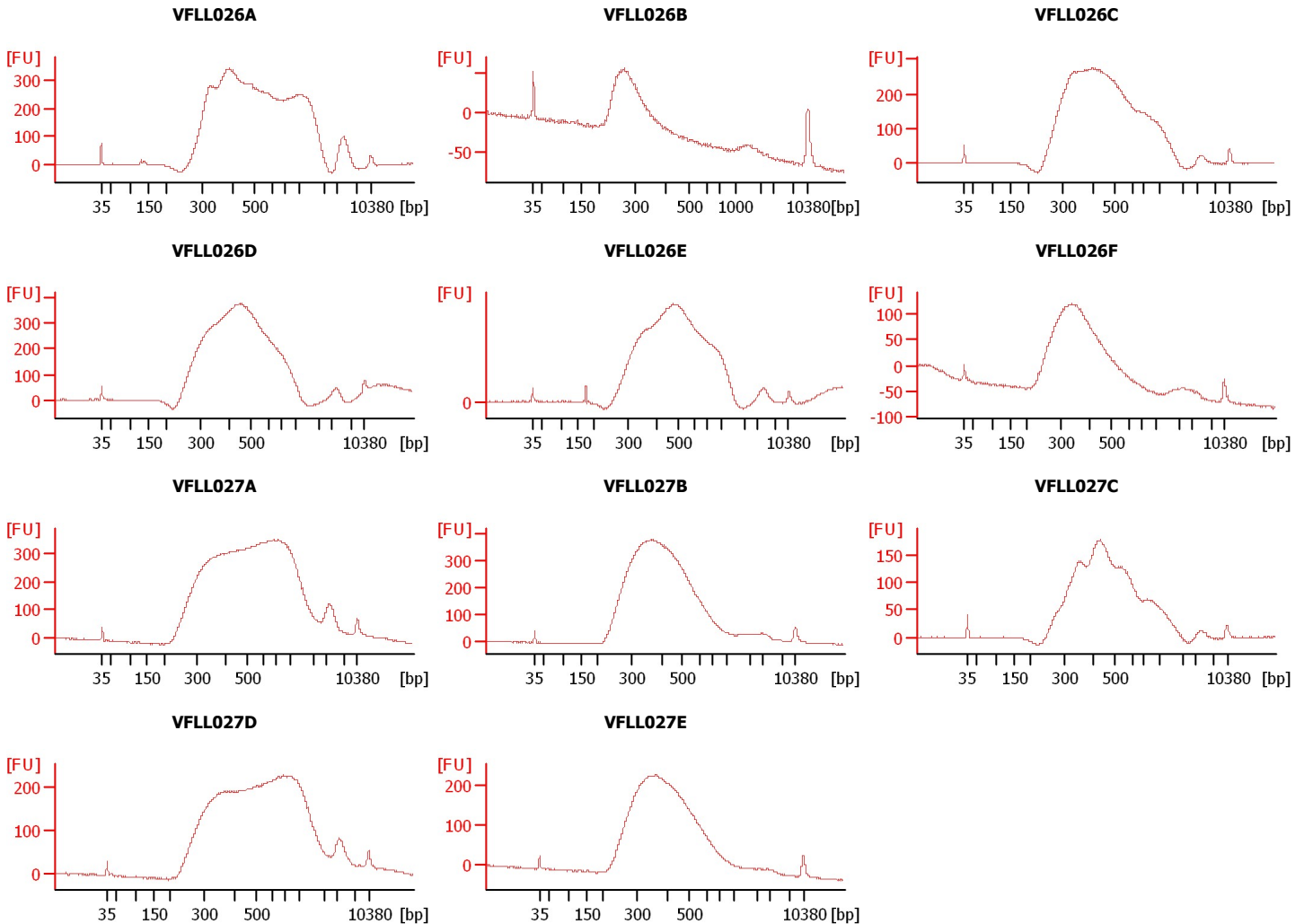
Instrument Name: DE13701086 Firmware: C.01.069
Serial#: DE13701086 Type: G2938B

Assay Information:

Assay Origin Path: C:\Program Files\Agilent\2100 bioanalyzer\2100 expert\assays\dsDNA\High Sensitivity DNA.xsy
Assay Class: High Sensitivity DNA Assay
Version: 1.03
Assay Comments: Copyright © 2003-2010 Agilent Technologies

Chip Information:

Chip Lot #: Reagent Kit Lot #: Chip Comments:



Assay Class: High Sensitivity DNA Assay
Data Path: C:\...ents and Settings\Bioanalyzer\2013-12-05\2013-12-05_006.xad

Created: 12/5/2013 2:11:22 PM
Modified: 12/5/2013 3:03:12 PM

Electrophoresis File Run Summary (Chip Summary)

Sample Name	Sample Comment	Rest. Digest	Status	Observation	Result Label	Result Color
VFLL026A		<input type="checkbox"/>	✓			
VFLL026B		<input type="checkbox"/>	✓			
VFLL026C		<input type="checkbox"/>	✓			
VFLL026D		<input type="checkbox"/>	✓			
VFLL026E		<input type="checkbox"/>	✓			
VFLL026F		<input type="checkbox"/>	✓			
VFLL027A		<input type="checkbox"/>	✓			
VFLL027B		<input type="checkbox"/>	✓			
VFLL027C		<input type="checkbox"/>	✓			
VFLL027D		<input type="checkbox"/>	✓			
VFLL027E		<input type="checkbox"/>	✓			
Ladder		<input type="checkbox"/>	✓			

Chip Lot #

Reagent Kit Lot #

Chip Comments :

Assay Class: High Sensitivity DNA Assay
 Data Path: C:\...ents and Settings\Bioanalyzer\2013-12-05\2013-12-05_006.xad

Created: 12/5/2013 2:11:22 PM
 Modified: 12/5/2013 3:03:12 PM

Electrophoresis Assay Details

General Analysis Settings

Number of Available Sample and Ladder Wells (Max.) : 12
 Minimum Visible Range [s] : 32
 Maximum Visible Range [s] : 138
 Start Analysis Time Range [s] : 33
 End Analysis Time Range [s] : 137.5
 Ladder Concentration [pg/μl] : 1950
 Uses Standard Area for Ladder Fragments
 Lower Marker Concentration [pg/μl] : 125
 Upper Marker Concentration [pg/μl] : 75
 Used Upper Marker for Quantitation
 Standard Curve Fit is Point to Point
 Show Data Aligned to Lower and Upper Marker

Integrator Settings

Integration Start Time [s] : 33.05
 Integration End Time [s] : 137
 Slope Threshold : 0.8
 Height Threshold [FU] : 5
 Area Threshold : 0.1
 Width Threshold [s] : 0.6
 Baseline Plateau [s] : 0.5

Filter Settings

Filter Width [s] : 0.5
 Polynomial Order : 4

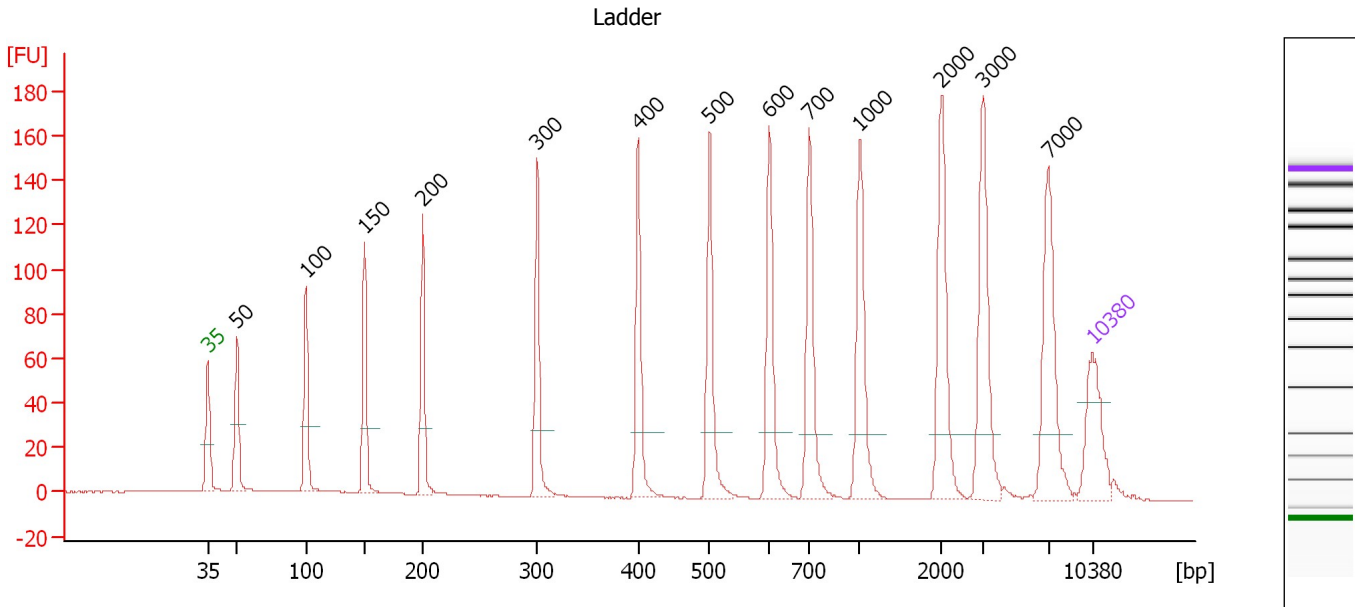
Ladder

Ladder Peak	Size	Area
1	35	160
2	50	210
3	100	208
4	150	221
5	200	242
6	300	270
7	400	305
8	500	306
9	600	336
10	700	321
11	1000	366
12	2000	413
13	3000	411
14	7000	400
15	10380	214

Assay Class: High Sensitivity DNA Assay
 Data Path: C:\...ents and Settings\Bioanalyzer\2013-12-05\2013-12-05_006.xad

Created: 12/5/2013 2:11:22 PM
 Modified: 12/5/2013 3:03:12 PM

Electropherogram Summary



Overall Results for Ladder

Noise: 0.2

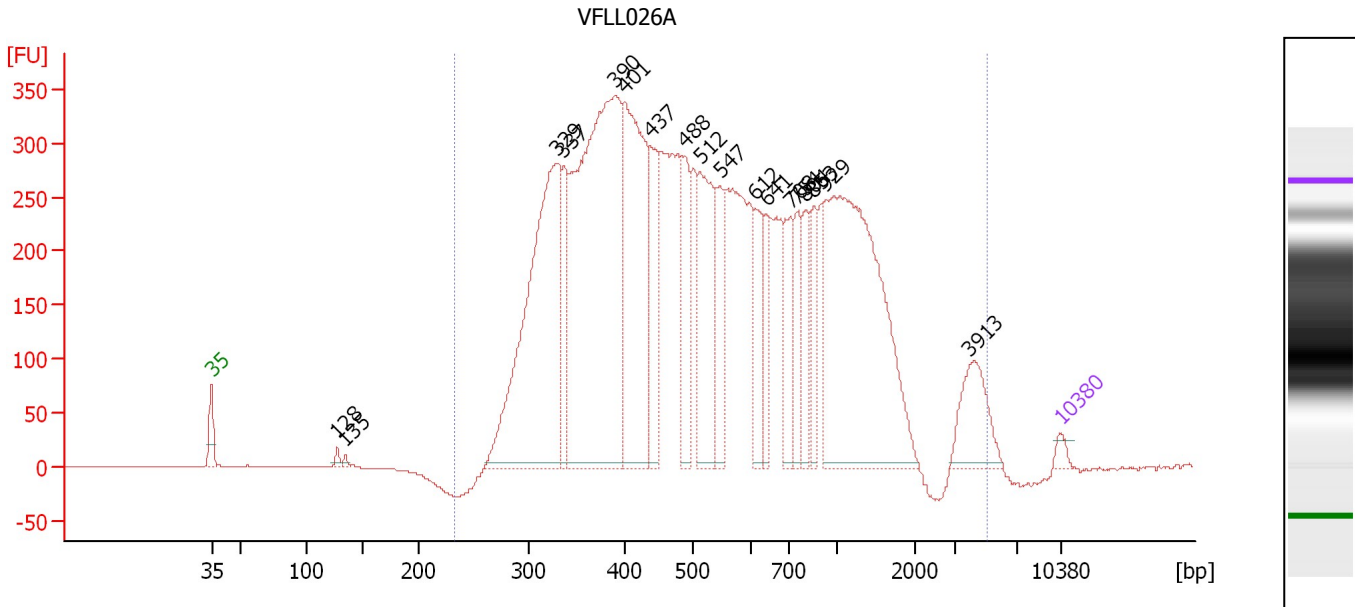
Peak table for Ladder

Peak	Aligned Migration Time [s]	Size [bp]	Conc. [pg/μl]	Molarity [pmol/l]	Observations
1	43.00	35	125.00	5,411.3	Lower Marker
2	45.32	50	150.00	4,545.5	Ladder Peak
3	50.76	100	150.00	2,272.7	Ladder Peak
4	55.41	150	150.00	1,515.2	Ladder Peak
5	60.00	200	150.00	1,136.4	Ladder Peak
6	69.08	300	150.00	757.6	Ladder Peak
7	77.05	400	150.00	568.2	Ladder Peak
8	82.70	500	150.00	454.5	Ladder Peak
9	87.43	600	150.00	378.8	Ladder Peak
10	90.59	700	150.00	324.7	Ladder Peak
11	94.60	1,000	150.00	227.3	Ladder Peak
12	101.02	2,000	150.00	113.6	Ladder Peak
13	104.35	3,000	150.00	75.8	Ladder Peak
14	109.50	7,000	150.00	32.5	Ladder Peak
15	113.00	10,380	75.00	10.9	Upper Marker

Assay Class: High Sensitivity DNA Assay
 Data Path: C:\...ents and Settings\Bioanalyzer\2013-12-05\2013-12-05_006.xad

Created: 12/5/2013 2:11:22 PM
 Modified: 12/5/2013 3:03:12 PM

Electropherogram Summary Continued ...



Overall Results for sample 1 : VFL026A

Number of peaks found: 18 Corr. Area 1: 10,514.0
 Noise: 0.2

Peak table for sample 1 : VFL026A

Peak	Aligned Migration Time [s]	Size [bp]	Conc. [pg/μl]	Molarity [pmol/l]	Observations
1	43.00	35	125.00	5,411.3	Lower Marker
2	53.38	128	73.37	867.4	
3	54.04	135	50.65	567.4	
4	71.40	329	5,176.47	23,824.8	
5	72.02	337	900.47	4,049.5	
6	76.29	390	7,015.23	27,226.1	
7	77.12	401	3,508.89	13,250.2	
8	79.14	437	1,114.95	3,865.6	
9	82.00	488	976.34	3,034.1	
10	83.28	512	1,831.43	5,418.7	
11	84.95	547	771.26	2,134.6	
12	87.81	612	695.61	1,722.6	
13	88.73	641	523.96	1,238.5	
14	90.71	708	755.13	1,615.1	
15	91.32	754	590.08	1,185.0	
16	91.98	804	617.38	1,163.7	
17	92.64	853	531.53	943.9	
18	93.65	929	4,721.35	7,701.2	
19	105.53	3,913	683.41	264.6	
20	113.00	10,380	75.00	10.9	Upper Marker

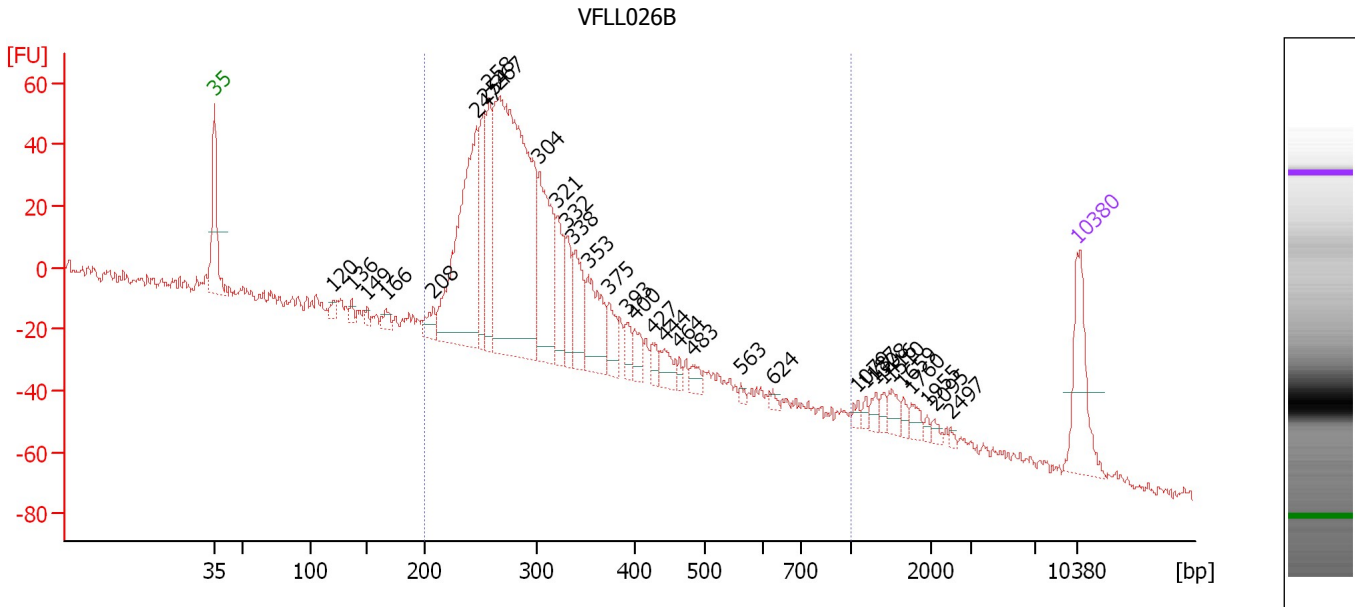
Region table for sample 1 : VFL026A

From [bp]	To [bp]	Average Size [bp]	Molarity [pmol/l]	Conc. [pg/μl]	Corr. Area	% of Total	Size distribution in CV [%]	Color
233	5,080	708	118,370.9	37,099.38	10,514.0	99	91.4	Blue

Assay Class: High Sensitivity DNA Assay
 Data Path: C:\...ents and Settings\Bioanalyzer\2013-12-05\2013-12-05_006.xad

Created: 12/5/2013 2:11:22 PM
 Modified: 12/5/2013 3:03:12 PM

Electropherogram Summary Continued ...



Overall Results for sample 2 : VFL026B

Number of peaks found: 33 Corr. Area 1: 1,340.9
 Noise: 2.5

Peak table for sample 2 : VFL026B

Peak	Aligned Migration Time [s]	Size [bp]	Conc. [pg/μl]	Molarity [pmol/l]	Observations
1	43.00	35	125.00	5,411.3	Lower Marker
2	52.64	120	10.53	132.8	
3	54.15	136	10.23	113.6	
4	55.36	149	8.17	82.8	
5	56.91	166	15.33	139.6	
6	60.76	208	25.47	185.2	
7	64.26	247	346.44	2,126.0	
8	64.91	254	107.89	643.5	
9	65.25	258	121.31	712.8	
10	66.07	267	657.13	3,730.3	
11	69.36	304	175.06	873.8	
12	70.74	321	79.69	376.3	
13	71.65	332	47.03	214.5	
14	72.08	338	74.17	332.8	
15	73.29	353	91.36	392.3	
16	75.02	375	38.37	155.2	
17	76.49	393	20.82	80.3	
18	77.05	400	24.95	94.5	
19	78.56	427	16.18	57.5	
20	79.56	444	24.94	85.0	
21	80.68	464	8.59	28.0	
22	81.76	483	15.03	47.1	
23	85.69	563	4.66	12.5	
24	88.20	624	5.00	12.1	
25	95.11	1,079	6.43	9.0	

Assay Class: High Sensitivity DNA Assay
 Data Path: C:\...ents and Settings\Bioanalyzer\2013-12-05\2013-12-05_006.xad


Created: 12/5/2013 2:11:22 PM
 Modified: 12/5/2013 3:03:12 PM

Electropherogram Summary Continued ...

... Peak table for sample 2 : VFLLO26B

Peak	Aligned Migration Time [s]	Size [bp]	Conc. [pg/μl]	Molarity [pmol/l]	Observations
26	95.80	1,187	6.34	8.1	
27	96.58	1,308	9.44	10.9	
28	97.27	1,416	8.14	8.7	
29	97.88	1,510	15.29	15.3	
30	98.83	1,659	7.90	7.2	
31	99.48	1,760	11.77	10.1	
32	100.73	1,955	3.91	3.0	
33	101.33	2,095	5.40	3.9	
34	102.67	2,497	2.99	1.8	
35	113.00	10,380	75.00	10.9	Upper Marker

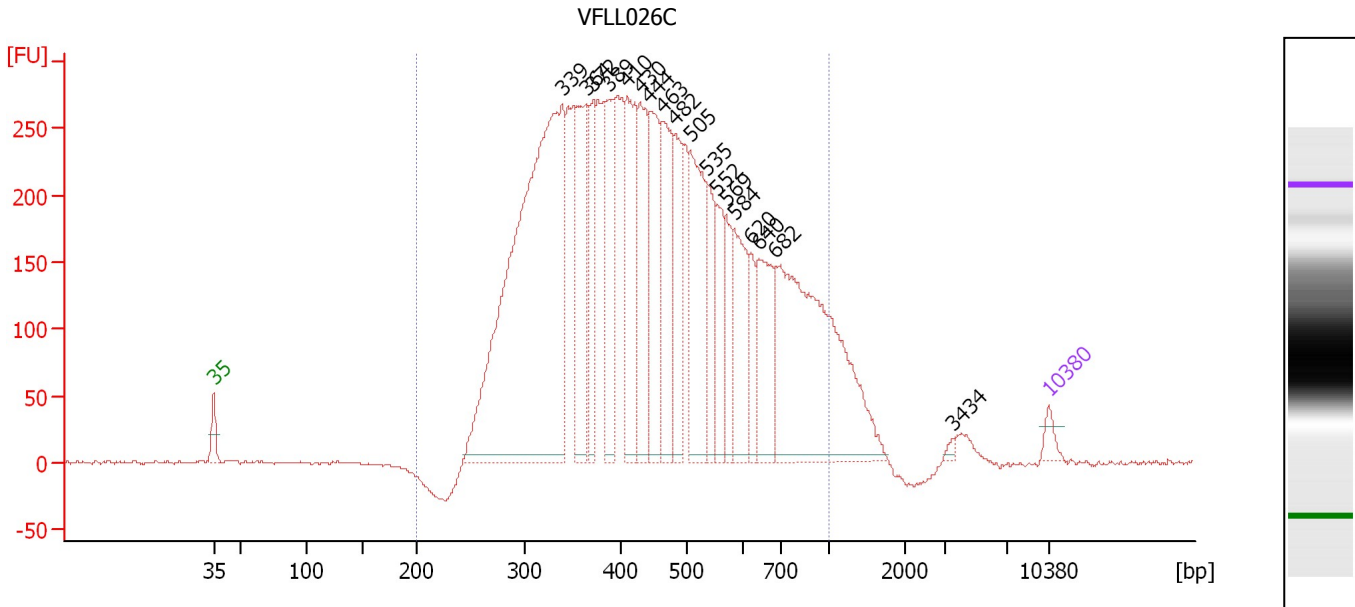
Region table for sample 2 : VFLLO26B

From [bp]	To [bp]	Average Size [bp]	Molarity [pmol/l]	Conc. [pg/μl]	Corr. Area	% of Total	Size distribution in CV [%]	Color
200	1,000	321	10,328.6	2,002.79	1,340.9	82	32.4	

Assay Class: High Sensitivity DNA Assay
 Data Path: C:\...ents and Settings\Bioanalyzer\2013-12-05\2013-12-05_006.xad

Created: 12/5/2013 2:11:22 PM
 Modified: 12/5/2013 3:03:12 PM

Electropherogram Summary Continued ...



Overall Results for sample 3 : VFL026C

Number of peaks found: 18 Corr. Area 1: 7,744.3
 Noise: 1.1

Peak table for sample 3 : VFL026C

Peak	Aligned Migration Time [s]	Size [bp]	Conc. [pg/μl]	Molarity [pmol/l]	Observations
1	43.00	35	125.00	5,411.3	Lower Marker
2	72.19	339	6,052.41	27,048.1	
3	74.20	364	1,135.36	4,722.5	
4	74.83	372	663.90	2,703.3	
5	76.17	389	794.82	3,096.4	
6	77.64	410	1,145.59	4,228.7	
7	78.76	430	969.77	3,415.3	
8	79.52	444	942.90	3,220.0	
9	80.59	463	1,027.51	3,365.1	
10	81.71	482	732.16	2,299.6	
11	82.96	505	1,236.19	3,705.7	
12	84.35	535	539.96	1,529.9	
13	85.15	552	493.27	1,354.5	
14	85.96	569	374.52	997.6	
15	86.67	584	726.43	1,884.8	
16	88.06	620	283.74	693.6	
17	88.68	640	724.00	1,715.1	
18	90.02	682	2,825.89	6,278.4	
19	104.91	3,434	27.07	11.9	
20	113.00	10,380	75.00	10.9	Upper Marker

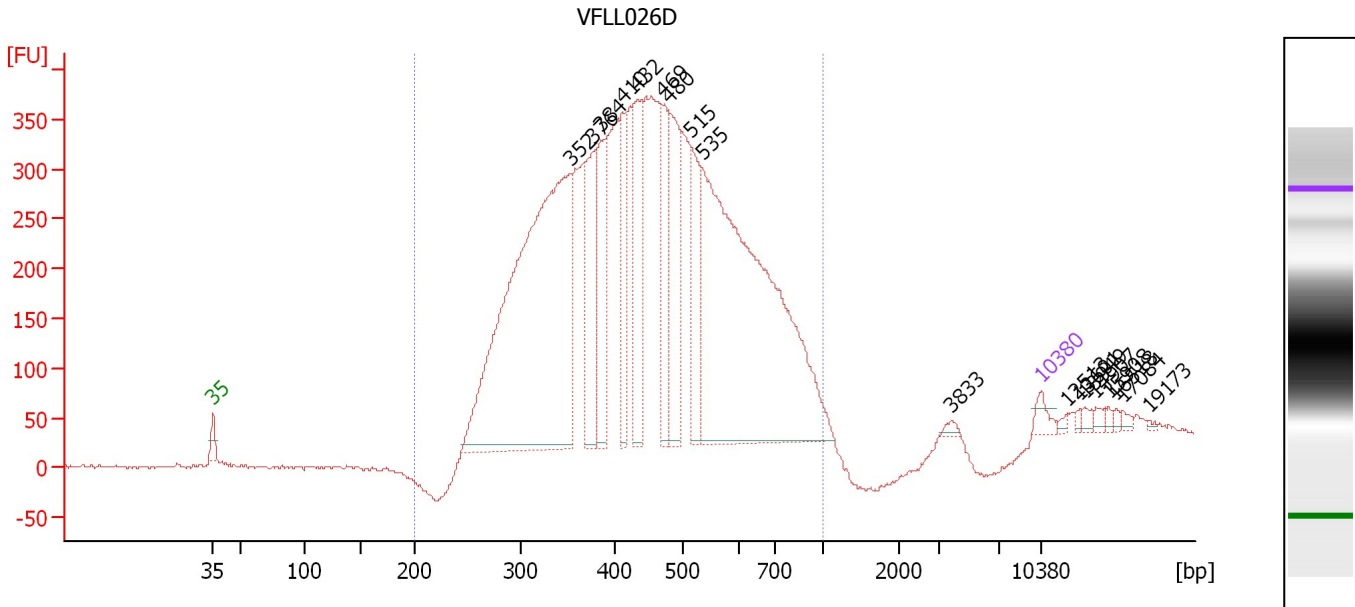
Region table for sample 3 : VFL026C

From [bp]	To [bp]	Average Size [bp]	Molarity [pmol/l]	Conc. [pg/μl]	Corr. Area	% of Total	Size distribution in CV [%]	Color
200	1,000	466	88,207.2	23,759.38	7,744.3	95	33.7	Blue

Assay Class: High Sensitivity DNA Assay
 Data Path: C:\...ents and Settings\Bioanalyzer\2013-12-05\2013-12-05_006.xad

Created: 12/5/2013 2:11:22 PM
 Modified: 12/5/2013 3:03:12 PM

Electropherogram Summary Continued ...



Overall Results for sample 4 : VFL026D

Number of peaks found: 18 Corr. Area 1: 8,963.3
 Noise: 2.1

Peak table for sample 4 : VFL026D

Peak	Aligned Migration Time [s]	Size [bp]	Conc. [pg/μl]	Molarity [pmol/l]	Observations
1	43.00	35	125.00	5,411.3	Lower Marker
2	73.22	352	5,351.52	23,038.2	
3	75.16	376	926.02	3,728.8	
4	75.79	384	777.71	3,067.1	
5	77.64	410	631.91	2,332.9	
6	78.86	432	872.42	3,060.2	
7	80.98	469	568.87	1,836.1	
8	81.56	480	919.73	2,904.3	
9	83.41	515	642.40	1,890.0	
10	84.36	535	4,759.53	13,478.8	
11	105.42	3,833	31.77	12.6	
12	113.00	10,380	75.00	10.9	Upper Marker
13	115.21	12,513	0.00	0.0	
14	116.34	13,601	0.00	0.0	
15	116.70	13,949	0.00	0.0	
16	117.69	14,907	0.00	0.0	
17	118.73	15,908	0.00	0.0	
18	119.36	16,518	0.00	0.0	
19	119.95	17,084	0.00	0.0	
20	122.11	19,173	0.00	0.0	

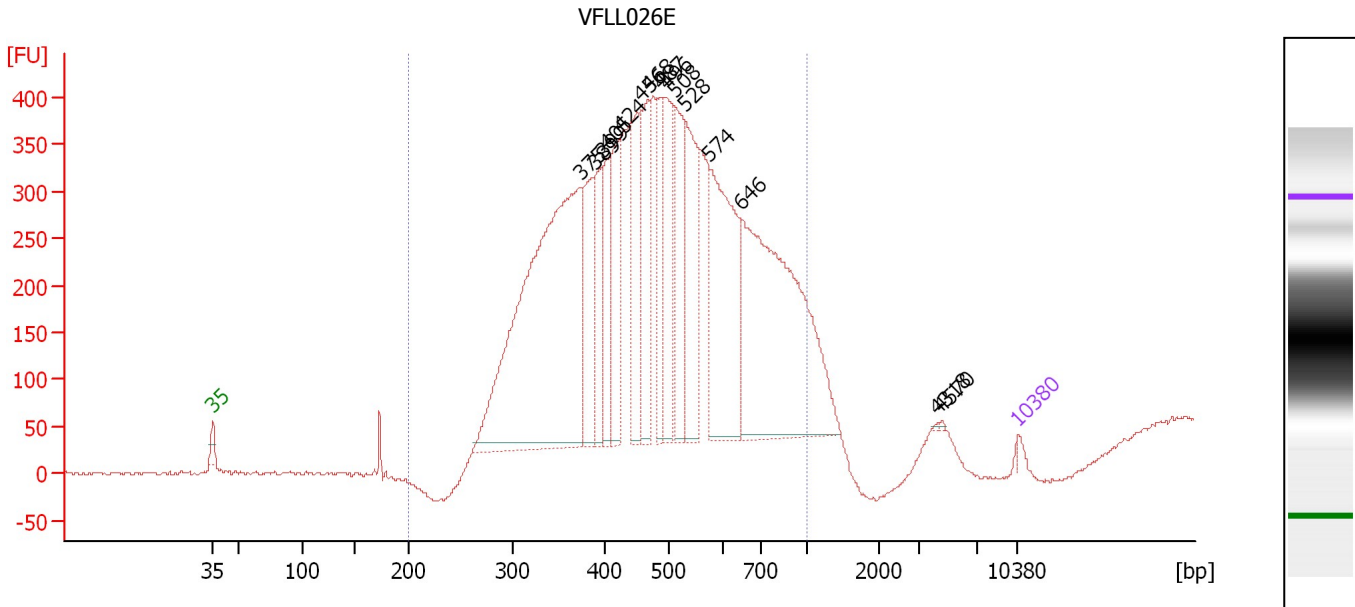
Region table for sample 4 : VFL026D

From [bp]	To [bp]	Average Size [bp]	Molarity [pmol/l]	Conc. [pg/μl]	Corr. Area	% of Total	Size distribution in CV [%]	Color
200	1,000	463	75,732.0	20,612.12	8,963.3	98	30.1	Blue

Assay Class: High Sensitivity DNA Assay
 Data Path: C:\...ents and Settings\Bioanalyzer\2013-12-05\2013-12-05_006.xad

Created: 12/5/2013 2:11:22 PM
 Modified: 12/5/2013 3:03:12 PM

Electropherogram Summary Continued ...



Overall Results for sample 5 : VFLLO26E

Number of peaks found: 15 Corr. Area 1: 8,875.4
 Noise: 2.0

Peak table for sample 5 : VFLLO26E

Peak	Aligned Migration Time [s]	Size [bp]	Conc. [pg/μl]	Molarity [pmol/l]	Observations
1	43.00	35	125.00	5,411.3	Lower Marker
2	75.08	375	47,946.84	193,578.8	
3	76.15	389	8,399.63	32,745.7	
4	76.93	399	6,599.80	25,091.1	
5	77.35	405	5,183.64	19,377.6	
6	78.42	424	7,422.72	26,514.2	
7	80.23	456	7,539.45	25,043.3	
8	80.87	468	8,156.69	26,428.4	
9	81.99	487	5,911.86	18,381.5	
10	82.50	496	8,062.26	24,612.1	
11	83.10	508	8,078.99	24,079.5	
12	84.03	528	10,393.58	29,827.1	
13	86.21	574	16,594.55	43,797.7	
14	88.89	646	30,802.53	72,217.1	
15	106.05	4,318	58.19	20.4	
16	106.37	4,570	68.63	22.8	
17	113.00	10,380	75.00	10.9	Upper Marker

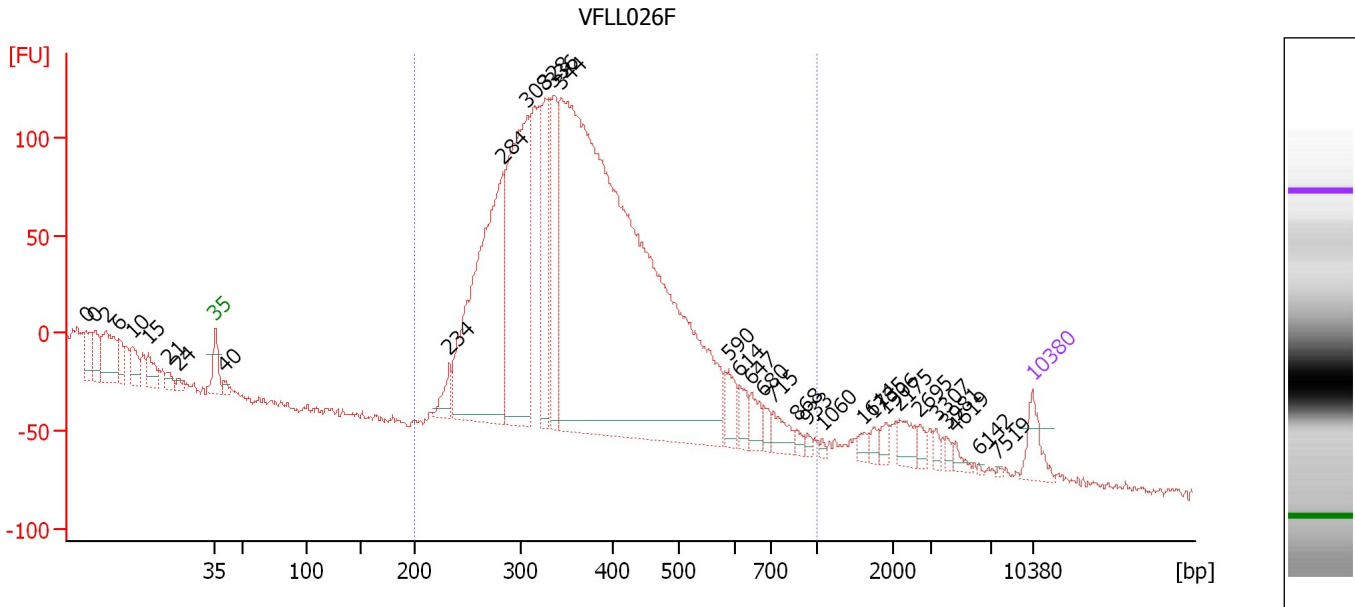
Region table for sample 5 : VFLLO26E

From [bp]	To [bp]	Average Size [bp]	Molarity [pmol/l]	Conc. [pg/μl]	Corr. Area	% of Total	Size distribution in CV [%]	Color
200	1,000	501	656,754.7	193,043.61	8,875.4	97	31.0	Blue

Assay Class: High Sensitivity DNA Assay
 Data Path: C:\...ents and Settings\Bioanalyzer\2013-12-05\2013-12-05_006.xad

Created: 12/5/2013 2:11:22 PM
 Modified: 12/5/2013 3:03:12 PM

Electropherogram Summary Continued ...



Overall Results for sample 6 : VFLLO26F

Number of peaks found: 33 Corr. Area 1: 3,173.9
 Noise: 2.8

Peak table for sample 6 : VFLLO26F

Peak	Aligned Migration Time [s]	Size [bp]	Conc. [pg/μl]	Molarity [pmol/l]	Observations
1	31.87	0	0.00	0.0	
2	32.69	0	0.00	0.0	
3	33.61	2	0.00	0.0	
4	34.65	6	0.00	0.0	
5	35.89	10	0.00	0.0	
6	37.25	15	0.00	0.0	
7	38.90	21	0.00	0.0	
8	39.76	24	0.00	0.0	
9	43.00	35	125.00	5,411.3	Lower Marker
10	43.78	40	26.79	1,014.6	
11	63.07	234	81.45	528.0	
12	67.63	284	1,341.15	7,154.8	
13	69.72	308	1,073.34	5,278.1	
14	71.27	328	374.45	1,732.1	
15	71.96	336	395.48	1,782.7	
16	72.60	344	4,556.66	20,061.6	
17	86.96	590	88.97	228.5	
18	87.87	614	61.63	152.1	
19	88.92	647	65.52	153.4	
20	89.97	680	38.24	85.2	
21	90.79	715	69.40	147.1	
22	92.84	868	21.32	37.2	
23	93.71	933	12.89	20.9	
24	94.99	1,060	8.55	12.2	
25	98.54	1,614	23.77	22.3	

Assay Class: High Sensitivity DNA Assay
 Data Path: C:\...ents and Settings\Bioanalyzer\2013-12-05\2013-12-05_006.xad

Created: 12/5/2013 2:11:22 PM
 Modified: 12/5/2013 3:03:12 PM

Electropherogram Summary Continued ...

... Peak table for sample 6 : VFLLO26F

Peak	Aligned Migration Time [s]	Size [bp]	Conc. [pg/μl]	Molarity [pmol/l]	Observations
26	99.32	1,735	21.75	19.0	
27	100.41	1,906	28.00	22.3	
28	101.60	2,175	60.97	42.5	
29	103.33	2,695	24.31	13.7	
30	104.75	3,307	17.88	8.2	
31	105.61	3,981	15.17	5.8	
32	106.43	4,619	20.31	6.7	
33	108.39	6,142	3.74	0.9	
34	110.04	7,519	3.56	0.7	
35	113.00	10,380	75.00	10.9	Upper Marker

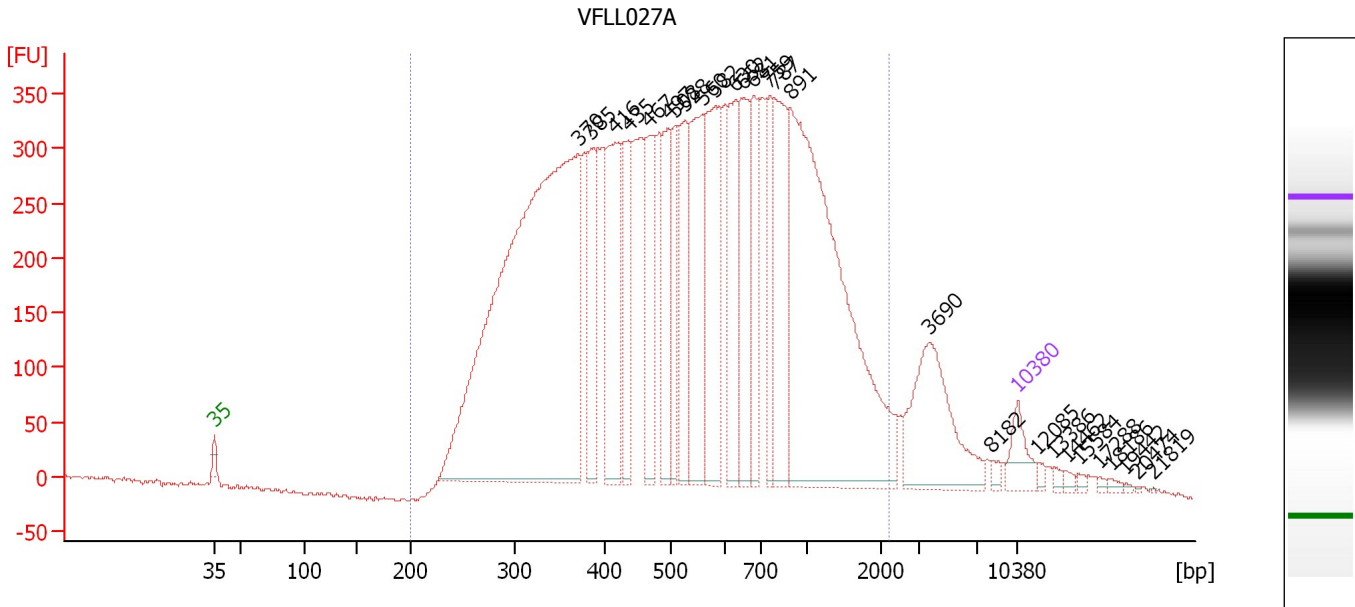
Region table for sample 6 : VFLLO26F

From [bp]	To [bp]	Average Size [bp]	Molarity [pmol/l]	Conc. [pg/μl]	Corr. Area	% of Total	Size distribution in CV [%]	Color
200	1,000	379	30,537.5	7,087.62	3,173.9	97	25.2	■

Assay Class: High Sensitivity DNA Assay
 Data Path: C:\...ents and Settings\Bioanalyzer\2013-12-05\2013-12-05_006.xad

Created: 12/5/2013 2:11:22 PM
 Modified: 12/5/2013 3:03:12 PM

Electropherogram Summary Continued ...



Overall Results for sample 7 : VFLLO27A

Number of peaks found: 27 Corr. Area 1: 12,509.7
 Noise: 2.1

Peak table for sample 7 : VFLLO27A

Peak	Aligned Migration Time [s]	Size [bp]	Conc. [pg/μl]	Molarity [pmol/l]	Observations
1	43.00	35	125.00	5,411.3	Lower Marker
2	74.65	370	3,031.35	12,415.4	
3	75.86	385	301.51	1,186.3	
4	77.95	416	517.36	1,884.5	
5	79.02	435	274.46	956.2	
6	80.84	467	374.74	1,216.0	
7	82.51	497	287.82	878.3	
8	83.07	508	219.52	655.2	
9	84.04	528	314.32	901.4	
10	85.53	560	512.43	1,387.0	
11	86.60	582	492.22	1,280.5	
12	88.37	630	316.20	761.0	
13	89.06	652	351.99	818.5	
14	89.99	681	225.50	501.7	
15	91.39	759	202.45	404.0	
16	91.76	787	423.95	816.1	
17	93.15	891	1,640.15	2,787.7	
18	105.24	3,690	365.24	150.0	
19	110.72	8,182	14.11	2.6	
20	113.00	10,380	75.00	10.9	Upper Marker
21	114.77	12,085	0.00	0.0	
22	116.11	13,386	0.00	0.0	
23	117.23	14,462	0.00	0.0	
24	118.39	15,584	0.00	0.0	
25	120.16	17,288	0.00	0.0	


Assay Class: High Sensitivity DNA Assay
Data Path: C:\...ents and Settings\Bioanalyzer\2013-12-05\2013-12-05_006.xad

Created: 12/5/2013 2:11:22 PM
Modified: 12/5/2013 3:03:12 PM

Electropherogram Summary Continued ...**... Peak table for sample 7 : VFLLO27A**

Peak	Aligned Migration Time [s]	Size [bp]	Conc. [pg/ μ l]	Molarity [pmol/l]	Observations
26	121.09	18,186	0.00	0.0	
27	122.39	19,442	0.00	0.0	
28	123.46	20,474	0.00	0.0	
29	124.85	21,819	0.00	0.0	

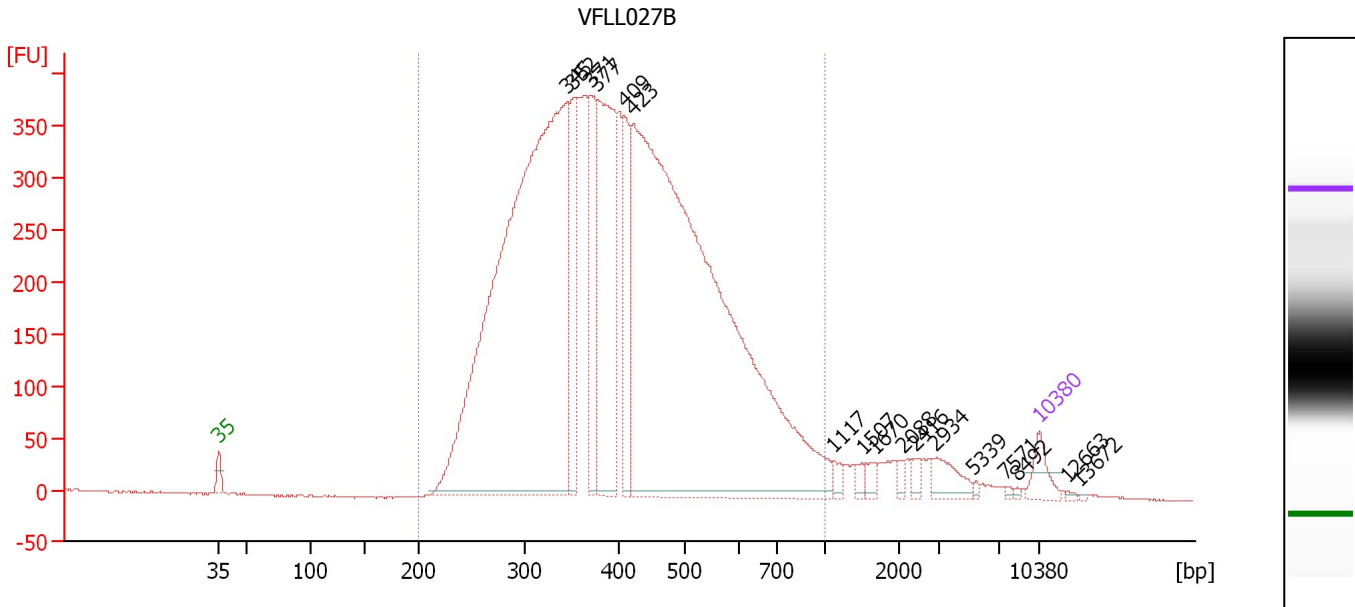
Region table for sample 7 : VFLLO27A

From [bp]	To [bp]	Average Size [bp]	Molarity [pmol/l]	Conc. [pg/ μ l]	Corr. Area	% of Total	Size distribution in CV [%]	Color
200	2,207	631	37,416.6	11,396.44	12,509.6	94	57.6	

Assay Class: High Sensitivity DNA Assay
 Data Path: C:\...ents and Settings\Bioanalyzer\2013-12-05\2013-12-05_006.xad

Created: 12/5/2013 2:11:22 PM
 Modified: 12/5/2013 3:03:12 PM

Electropherogram Summary Continued ...



Overall Results for sample 8 : VFL027B

Number of peaks found: 17 Corr. Area 1: 9,988.2
 Noise: 0.9

Peak table for sample 8 : VFL027B

Peak	Aligned Migration Time [s]	Size [bp]	Conc. [pg/μl]	Molarity [pmol/l]	Observations
1	43.00	35	125.00	5,411.3	Lower Marker
2	72.70	345	4,771.71	20,928.3	
3	73.25	352	491.71	2,114.7	
4	74.75	371	504.67	2,060.4	
5	75.25	377	1,156.75	4,644.0	
6	77.57	409	387.18	1,433.8	
7	78.34	423	5,208.86	18,665.4	
8	95.35	1,117	36.32	49.3	
9	97.85	1,507	26.18	26.3	
10	98.90	1,670	35.69	32.4	
11	101.31	2,088	20.46	14.8	
12	102.40	2,416	30.92	19.4	
13	104.13	2,934	97.99	50.6	
14	107.36	5,339	8.45	2.4	
15	110.09	7,571	7.60	1.5	
16	111.04	8,492	5.47	1.0	
17	113.00	10,380	75.00	10.9	Upper Marker
18	115.37	12,663	0.00	0.0	
19	116.41	13,672	0.00	0.0	

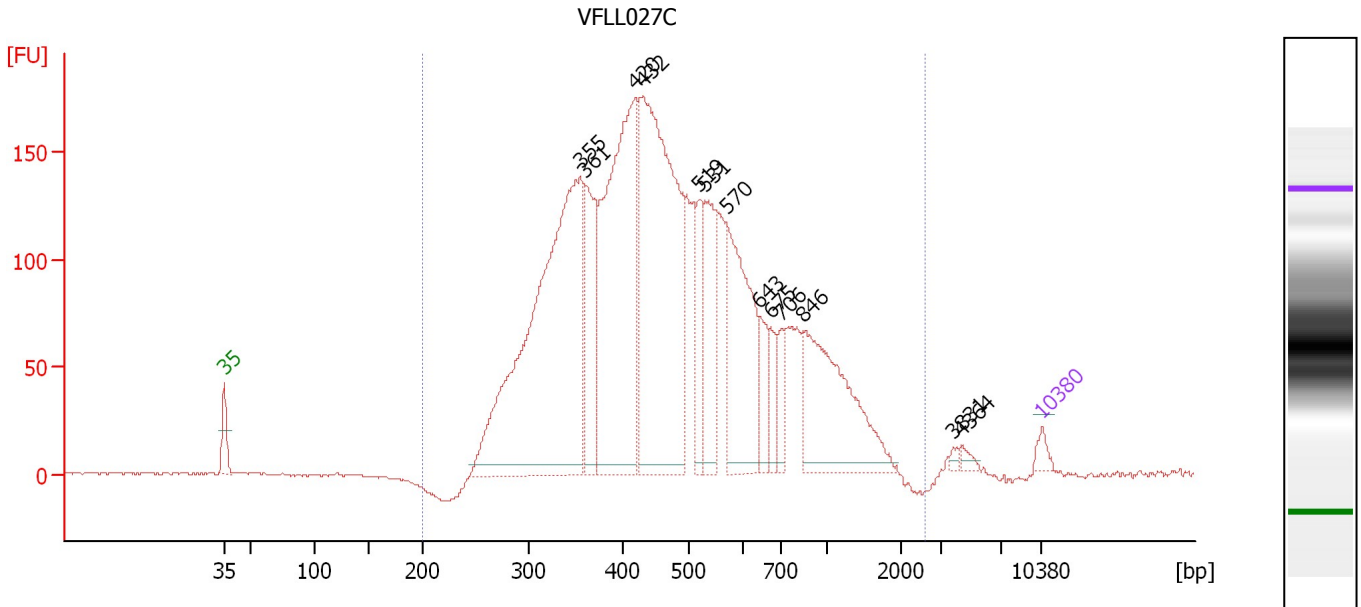
Region table for sample 8 : VFL027B

From [bp]	To [bp]	Average Size [bp]	Molarity [pmol/l]	Conc. [pg/μl]	Corr. Area	% of Total	Size distribution in CV [%]	Color
200	1,019	420	54,412.3	13,469.17	9,988.2	95	30.5	Blue

Assay Class: High Sensitivity DNA Assay
 Data Path: C:\...ents and Settings\Bioanalyzer\2013-12-05\2013-12-05_006.xad

Created: 12/5/2013 2:11:22 PM
 Modified: 12/5/2013 3:03:12 PM

Electropherogram Summary Continued ...



Overall Results for sample 9 : VFL027C

Number of peaks found: 13 Corr. Area 1: 4,060.8
 Noise: 0.4

Peak table for sample 9 : VFL027C

Peak	Aligned Migration Time [s]	Size [bp]	Conc. [pg/μl]	Molarity [pmol/l]	Observations
1	43.00	35	125.00	5,411.3	Lower Marker
2	73.46	355	5,930.30	25,315.5	
3	73.91	361	1,210.39	5,084.9	
4	78.21	420	3,874.10	13,961.7	
5	78.84	432	4,603.64	16,156.3	
6	83.59	519	524.04	1,530.4	
7	84.19	531	940.35	2,681.3	
8	86.01	570	1,721.43	4,575.6	
9	88.80	643	360.51	849.2	
10	89.80	675	283.21	635.7	
11	90.67	706	264.23	567.3	
12	92.54	846	1,733.90	3,106.0	
13	105.42	3,831	36.31	14.4	
14	106.11	4,364	54.94	19.1	
15	113.00	10,380	75.00	10.9	Upper Marker

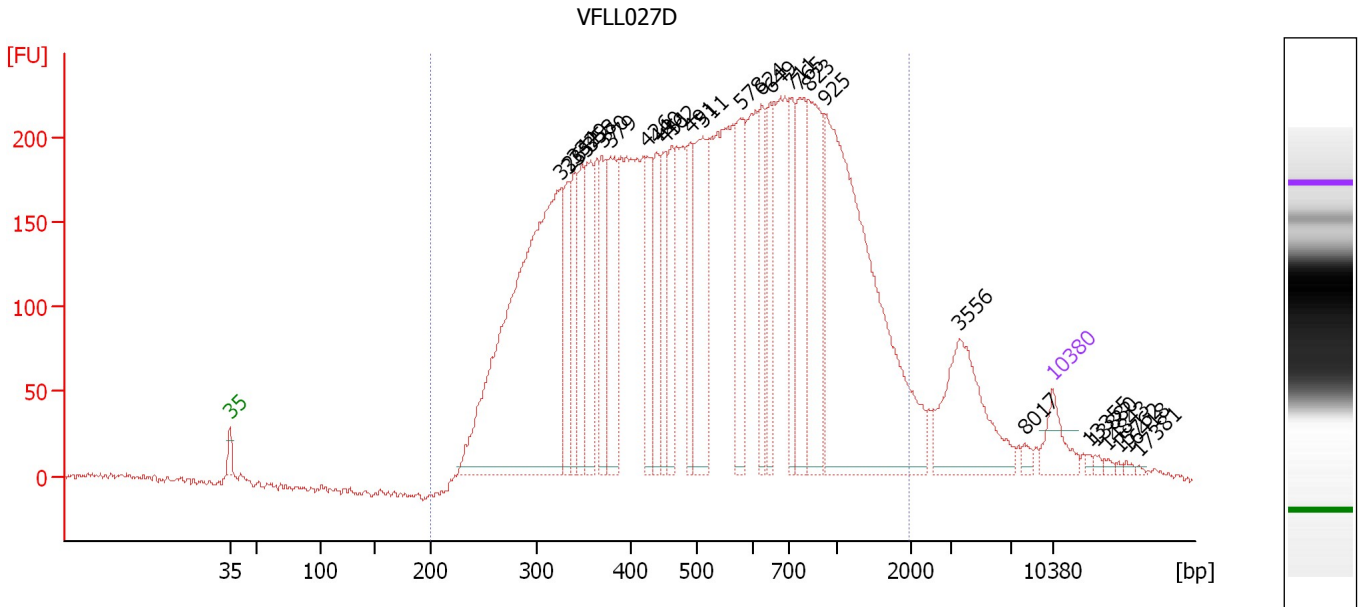
Region table for sample 9 : VFL027C

From [bp]	To [bp]	Average Size [bp]	Molarity [pmol/l]	Conc. [pg/μl]	Corr. Area	% of Total	Size distribution in CV [%]	Color
200	2,587	522	84,148.7	24,068.55	4,060.8	99	47.4	Blue

Assay Class: High Sensitivity DNA Assay
 Data Path: C:\...ents and Settings\Bioanalyzer\2013-12-05\2013-12-05_006.xad

Created: 12/5/2013 2:11:22 PM
 Modified: 12/5/2013 3:03:12 PM

Electropherogram Summary Continued ...



Overall Results for sample 10 : VFL027D

Number of peaks found: 28 Corr. Area 1: 7,676.4
 Noise: 2.2

Peak table for sample 10 : VFL027D

Peak	Aligned Migration Time [s]	Size [bp]	Conc. [pg/μl]	Molarity [pmol/l]	Observations
1	43.00	35	125.00	5,411.3	Lower Marker
2	71.15	326	1,798.22	8,356.0	
3	71.88	335	257.57	1,164.4	
4	72.42	342	212.09	939.7	
5	72.97	349	230.56	1,001.5	
6	73.74	358	278.52	1,177.2	
7	74.65	370	226.24	926.8	
8	75.37	379	301.54	1,205.7	
9	78.50	426	209.14	744.5	
10	79.31	440	193.60	666.6	
11	79.95	451	192.58	646.6	
12	80.58	462	193.35	633.4	
13	82.17	491	207.23	640.1	
14	83.21	511	439.11	1,302.6	
15	86.39	578	266.47	698.6	
16	88.20	624	182.89	443.8	
17	88.97	649	184.70	431.4	
18	90.74	711	202.10	430.8	
19	91.47	765	293.27	580.7	
20	92.24	823	424.67	782.0	
21	93.60	925	1,312.67	2,151.1	
22	105.07	3,556	316.04	134.6	
23	110.55	8,017	15.57	2.9	
24	113.00	10,380	75.00	10.9	Upper Marker
25	116.08	13,355	0.00	0.0	

Assay Class: High Sensitivity DNA Assay
 Data Path: C:\...ents and Settings\Bioanalyzer\2013-12-05\2013-12-05_006.xad

Created: 12/5/2013 2:11:22 PM
 Modified: 12/5/2013 3:03:12 PM

Electropherogram Summary Continued ...

... Peak table for sample 10 : VFLL027D

Peak	Aligned Migration Time [s]	Size [bp]	Conc. [pg/ μ l]	Molarity [pmol/l]	Observations
26	116.63	13,880	0.00	0.0	
27	117.62	14,843	0.00	0.0	
28	118.58	15,762	0.00	0.0	
29	119.26	16,418	0.00	0.0	
30	120.25	17,381	0.00	0.0	

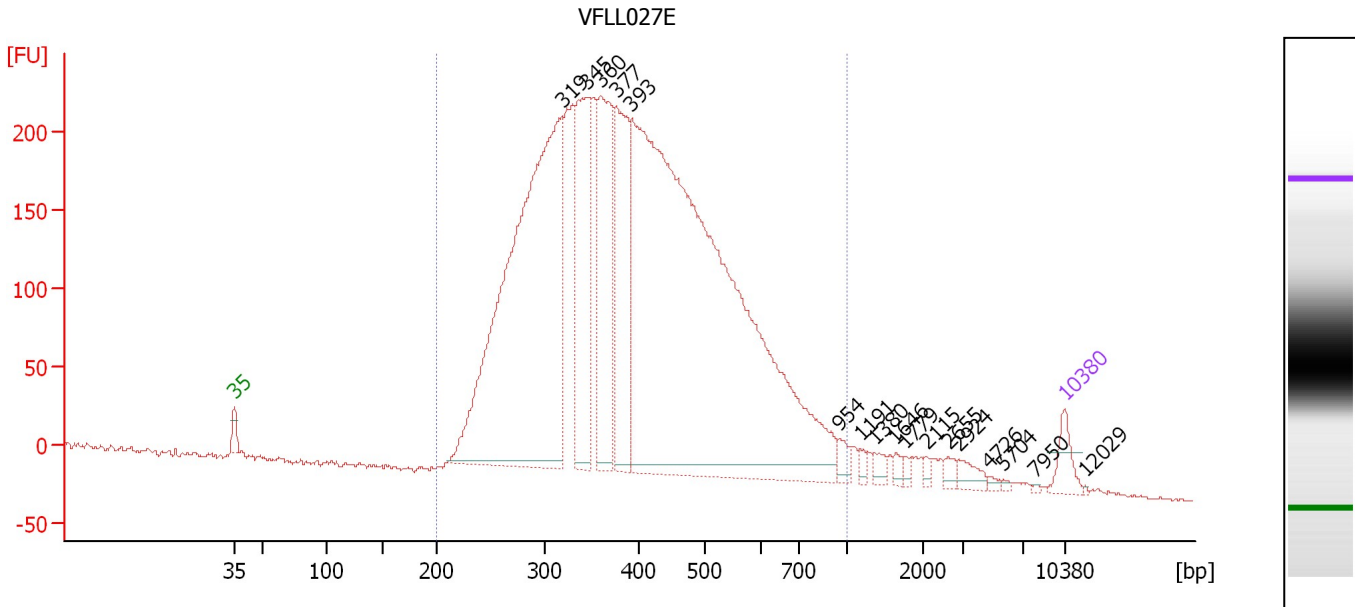
Region table for sample 10 : VFLL027D

From [bp]	To [bp]	Average Size [bp]	Molarity [pmol/l]	Conc. [pg/ μ l]	Corr. Area	% of Total	Size distribution in CV [%]	Color
200	1,953	618	34,405.3	10,363.94	7,676.4	94	55.3	

Assay Class: High Sensitivity DNA Assay
 Data Path: C:\...ents and Settings\Bioanalyzer\2013-12-05\2013-12-05_006.xad

Created: 12/5/2013 2:11:22 PM
 Modified: 12/5/2013 3:03:12 PM

Electropherogram Summary Continued ...



Overall Results for sample 11 : VFL027E

Number of peaks found: 17 Corr. Area 1: 6,127.1
 Noise: 1.1

Peak table for sample 11 : VFL027E

Peak	Aligned Migration Time [s]	Size [bp]	Conc. [pg/μl]	Molarity [pmol/l]	Observations
1	43.00	35	125.00	5,411.3	Lower Marker
2	70.60	319	3,029.58	14,382.1	
3	72.63	345	820.44	3,608.0	
4	73.84	360	791.56	3,333.7	
5	75.19	377	714.47	2,873.9	
6	76.49	393	4,856.20	18,721.4	
7	93.98	954	44.85	71.3	
8	95.83	1,191	19.47	24.8	
9	97.04	1,380	31.87	35.0	
10	98.75	1,646	22.01	20.3	
11	99.60	1,779	17.33	14.8	
12	101.40	2,115	15.68	11.2	
13	103.20	2,655	27.14	15.5	
14	104.10	2,924	46.77	24.2	
15	106.57	4,726	10.06	3.2	
16	107.83	5,704	7.31	1.9	
17	110.48	7,950	4.46	0.9	
18	113.00	10,380	75.00	10.9	Upper Marker
19	114.71	12,029	0.00	0.0	

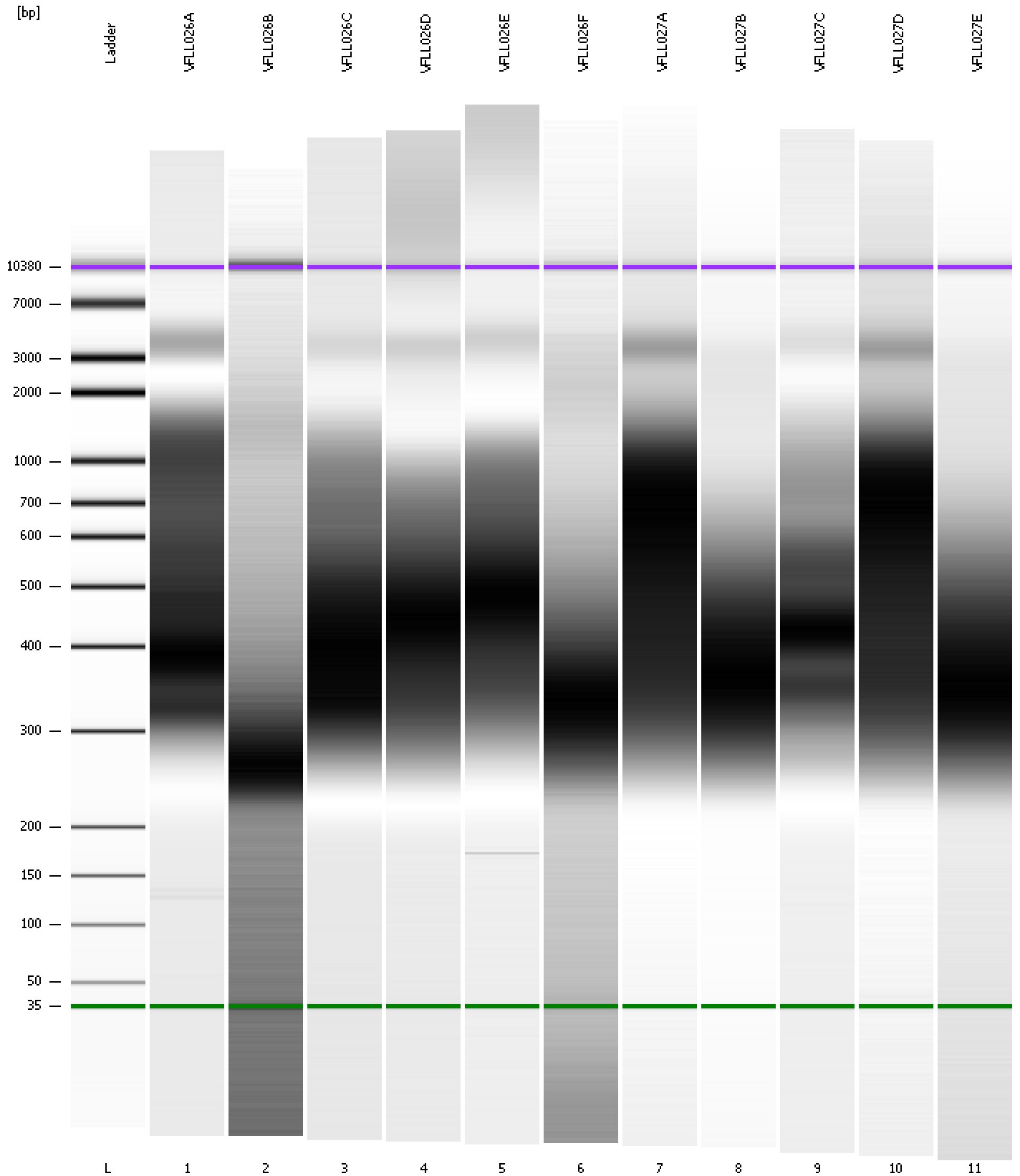
Region table for sample 11 : VFL027E

From [bp]	To [bp]	Average Size [bp]	Molarity [pmol/l]	Conc. [pg/μl]	Corr. Area	% of Total	Size distribution in CV [%]	Color
200	1,000	413	44,693.8	10,871.63	6,127.1	96	31.0	Blue

Assay Class: High Sensitivity DNA Assay
Data Path: C:\...ents and Settings\Bioanalyzer\2013-12-05\2013-12-05_006.xad

Created: 12/5/2013 2:11:22 PM
Modified: 12/5/2013 3:03:12 PM

Gel Image



Assay Class: High Sensitivity DNA Assay
Data Path: C:\...ents and Settings\Bioanalyzer\2013-12-05\2013-12-05_006.xad

Created: 12/5/2013 2:11:22 PM
Modified: 12/5/2013 3:03:12 PM

Curves

Standard Curve

