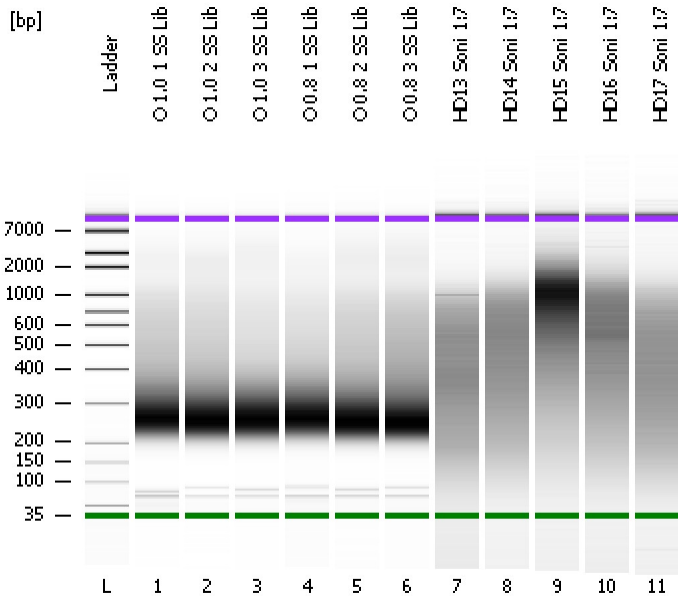


Assay Class: High Sensitivity DNA Assay
Data Path: C:\...ents and Settings\Bioanalyzer\2013-12-06\2013-12-06_004.xad

Created: 12/6/2013 1:21:55 PM
Modified: 12/6/2013 2:07:50 PM

Electrophoresis File Run Summary



Instrument Information:

Instrument Name: DE13701086 Firmware: C.01.069
Serial#: DE13701086 Type: G2938B

Assay Information:

Assay Origin Path: C:\Program Files\Agilent\2100 bioanalyzer\2100 expert\assays\dsDNA\High Sensitivity DNA.xsy
Assay Class: High Sensitivity DNA Assay
Version: 1.03
Assay Comments: Copyright © 2003-2010 Agilent Technologies

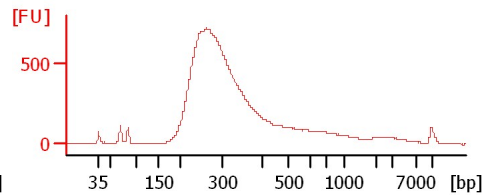
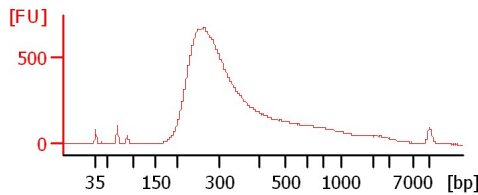
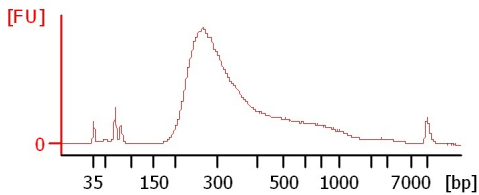
Chip Information:

Chip Lot #: Reagent Kit Lot #: Chip Comments:

O 1.0 1 SS Lib

O 1.0 2 SS Lib

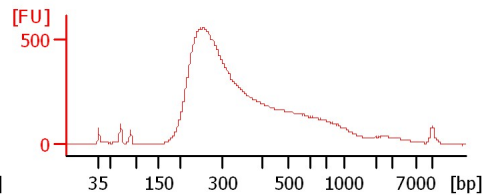
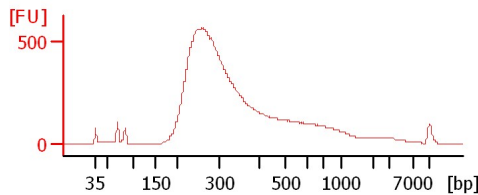
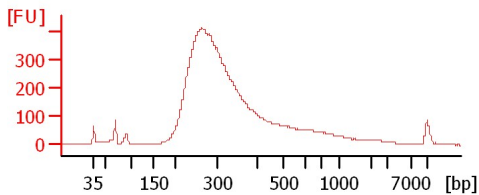
O 1.0 3 SS Lib



O 0.8 1 SS Lib

O 0.8 2 SS Lib

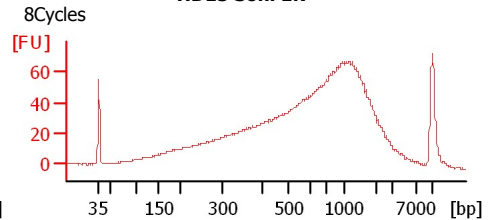
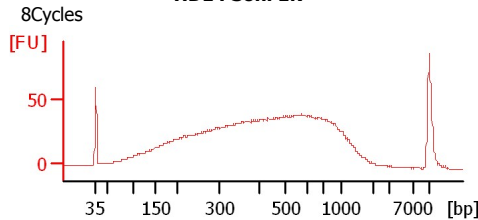
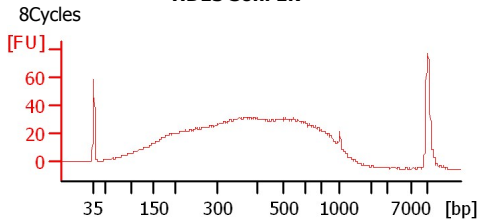
O 0.8 3 SS Lib



HD13 Soni 1:7

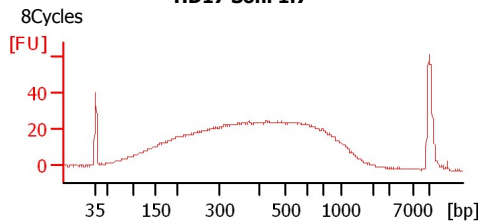
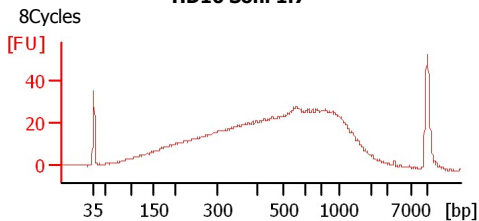
HD14 Soni 1:7

HD15 Soni 1:7



HD16 Soni 1:7

HD17 Soni 1:7



Assay Class: High Sensitivity DNA Assay
Data Path: C:\...ents and Settings\Bioanalyzer\2013-12-06\2013-12-06_004.xad

Created: 12/6/2013 1:21:55 PM
Modified: 12/6/2013 2:07:50 PM

Electrophoresis File Run Summary (Chip Summary)

Sample Name	Sample Comment	Rest. Digest	Status	Observation	Result Label	Result Color
O 1.0 1 SS Lib		<input type="checkbox"/>	✓			
O 1.0 2 SS Lib		<input type="checkbox"/>	✓			
O 1.0 3 SS Lib		<input type="checkbox"/>	✓			
O 0.8 1 SS Lib		<input type="checkbox"/>	✓			
O 0.8 2 SS Lib		<input type="checkbox"/>	✓			
O 0.8 3 SS Lib		<input type="checkbox"/>	✓			
HD13 Soni 1:7	8Cycles	<input type="checkbox"/>	✓			
HD14 Soni 1:7	8Cycles	<input type="checkbox"/>	✓			
HD15 Soni 1:7	8Cycles	<input type="checkbox"/>	✓			
HD16 Soni 1:7	8Cycles	<input type="checkbox"/>	✓			
HD17 Soni 1:7	8Cycles	<input type="checkbox"/>	✓			
Ladder		<input type="checkbox"/>	✓			

Chip Lot #

Reagent Kit Lot #

Chip Comments :

Assay Class: High Sensitivity DNA Assay
Data Path: C:\...ents and Settings\Bioanalyzer\2013-12-06\2013-12-06_004.xad

Created: 12/6/2013 1:21:55 PM
Modified: 12/6/2013 2:07:50 PM

Electrophoresis Assay Details

General Analysis Settings

Number of Available Sample and Ladder Wells (Max.) : 12
Minimum Visible Range [s] : 32
Maximum Visible Range [s] : 138
Start Analysis Time Range [s] : 33
End Analysis Time Range [s] : 137.5
Ladder Concentration [pg/μl] : 1950
Uses Standard Area for Ladder Fragments
Lower Marker Concentration [pg/μl] : 125
Upper Marker Concentration [pg/μl] : 75
Used Upper Marker for Quantitation
Standard Curve Fit is Point to Point
Show Data Aligned to Lower and Upper Marker

Integrator Settings

Integration Start Time [s] : 33.05
Integration End Time [s] : 137
Slope Threshold : 0.8
Height Threshold [FU] : 5
Area Threshold : 0.1
Width Threshold [s] : 0.6
Baseline Plateau [s] : 0.5

Filter Settings

Filter Width [s] : 0.5
Polynomial Order : 4

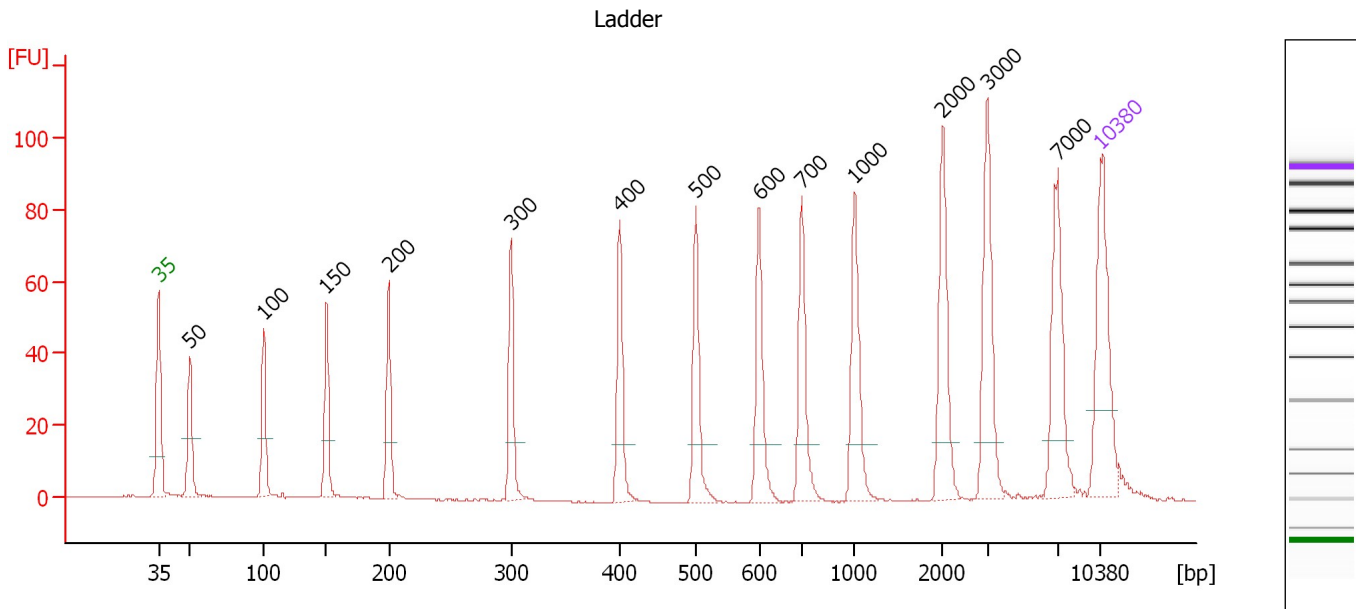
Ladder

Ladder Peak	Size	Area
1	35	160
2	50	210
3	100	208
4	150	221
5	200	242
6	300	270
7	400	305
8	500	306
9	600	336
10	700	321
11	1000	366
12	2000	413
13	3000	411
14	7000	400
15	10380	214

Assay Class: High Sensitivity DNA Assay
 Data Path: C:\...ents and Settings\Bioanalyzer\2013-12-06\2013-12-06_004.xad

Created: 12/6/2013 1:21:55 PM
 Modified: 12/6/2013 2:07:50 PM

Electropherogram Summary



Overall Results for Ladder

Noise: 0.2

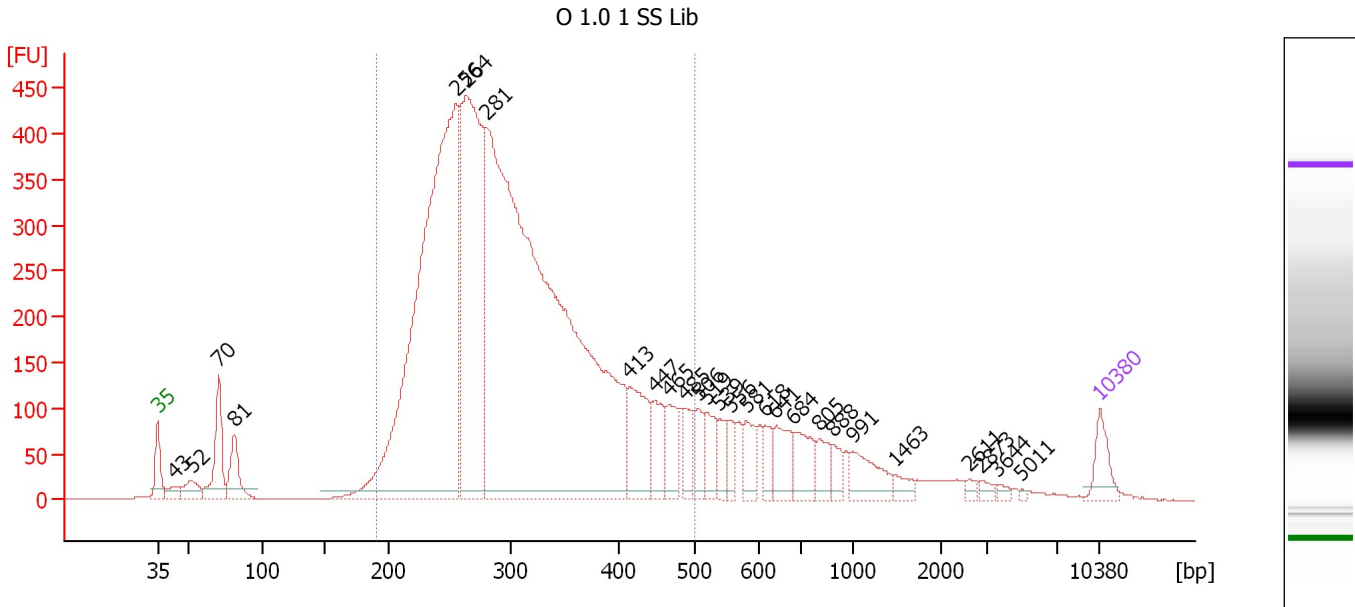
Peak table for Ladder

Peak	Aligned Migration Time [s]	Size [bp]	Conc. [pg/μl]	Molarity [pmol/l]	Observations
1	43.00	35	125.00	5,411.3	Lower Marker
2	45.34	50	150.00	4,545.5	Ladder Peak
3	50.79	100	150.00	2,272.7	Ladder Peak
4	55.46	150	150.00	1,515.2	Ladder Peak
5	60.09	200	150.00	1,136.4	Ladder Peak
6	69.17	300	150.00	757.6	Ladder Peak
7	77.26	400	150.00	568.2	Ladder Peak
8	82.93	500	150.00	454.5	Ladder Peak
9	87.60	600	150.00	378.8	Ladder Peak
10	90.76	700	150.00	324.7	Ladder Peak
11	94.70	1,000	150.00	227.3	Ladder Peak
12	101.23	2,000	150.00	113.6	Ladder Peak
13	104.56	3,000	150.00	75.8	Ladder Peak
14	109.80	7,000	150.00	32.5	Ladder Peak
15	113.00	10,380	75.00	10.9	Upper Marker

Assay Class: High Sensitivity DNA Assay
 Data Path: C:\...ents and Settings\Bioanalyzer\2013-12-06\2013-12-06_004.xad

Created: 12/6/2013 1:21:55 PM
 Modified: 12/6/2013 2:07:50 PM

Electropherogram Summary Continued ...



Setpoint Deviations for sample 1 : O 1.0 1 SS Lib

Height Threshold [FU] : 10

Overall Results for sample 1 : O 1.0 1 SS Lib

Number of peaks found: 27 Corr. Area 1: 8,019.4
 Noise: 0.3

Peak table for sample 1 : O 1.0 1 SS Lib

Pea k	Aligned Migration Time [s]	Size [bp]	Conc. [pg/μl]	Molarity [pmol/l]	Observations
1	43.00	35	125.00	5,411.3	Lower Marker
2	44.27	43	52.48	1,843.8	
3	45.53	52	88.64	2,593.2	
4	47.54	70	277.18	5,982.3	
5	48.72	81	178.28	3,334.4	
6	65.17	256	2,902.10	17,181.5	
7	65.91	264	1,548.63	8,885.0	
8	67.48	281	4,577.82	24,650.3	
9	78.00	413	294.59	1,080.8	
10	79.92	447	142.98	484.8	
11	80.97	465	136.25	443.6	
12	82.10	485	95.98	299.6	
13	83.19	506	92.72	277.9	
14	83.80	519	116.02	338.9	
15	84.76	539	79.26	222.7	
16	85.55	556	58.08	158.3	
17	86.73	581	95.43	248.8	
18	88.17	618	62.36	152.9	
19	88.91	641	128.00	302.4	
20	90.26	684	131.15	290.4	
21	92.14	805	76.39	143.8	
22	93.23	888	55.26	94.3	

Assay Class: High Sensitivity DNA Assay
 Data Path: C:\...ents and Settings\Bioanalyzer\2013-12-06\2013-12-06_004.xad


Created: 12/6/2013 1:21:55 PM
 Modified: 12/6/2013 2:07:50 PM

Electropherogram Summary Continued ...

... Peak table for sample 1 : O 1.0 1 SS Lib

Peak	Aligned Migration Time [s]	Size [bp]	Conc. [pg/μl]	Molarity [pmol/l]	Observations
23	94.58	991	123.71	189.1	
24	97.73	1,463	32.89	34.1	
25	103.27	2,611	15.53	9.0	
26	104.14	2,873	17.57	9.3	
27	105.41	3,644	12.77	5.3	
28	107.20	5,011	4.78	1.4	
29	113.00	10,380	75.00	10.9	Upper Marker

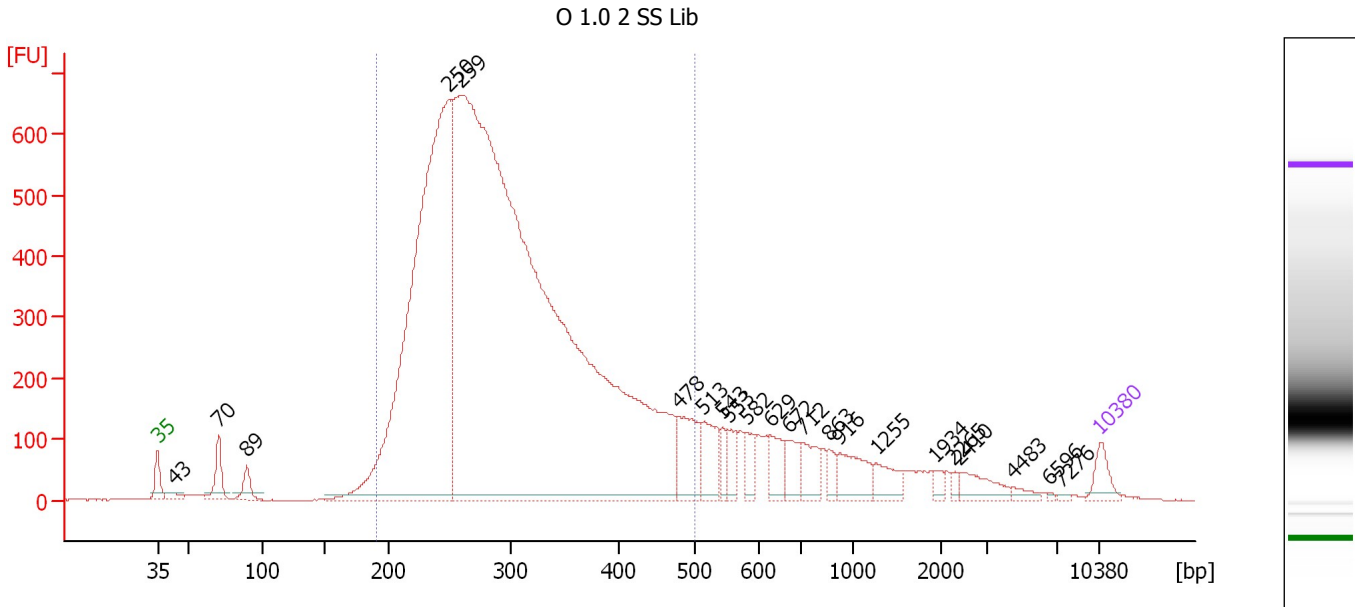
Region table for sample 1 : O 1.0 1 SS Lib

From [bp]	To [bp]	Average Size [bp]	Molarity [pmol/l]	Conc. [pg/μl]	Corr. Area	% of Total	Size distribution in CV [%]	Color
191	499	307	49,434.2	9,424.76	8,019.4	80	22.4	

Assay Class: High Sensitivity DNA Assay
 Data Path: C:\...ents and Settings\Bioanalyzer\2013-12-06\2013-12-06_004.xad

Created: 12/6/2013 1:21:55 PM
 Modified: 12/6/2013 2:07:50 PM

Electropherogram Summary Continued ...



Setpoint Deviations for sample 2 : O 1.0 2 SS Lib

Height Threshold [FU] : 10

Overall Results for sample 2 : O 1.0 2 SS Lib

Number of peaks found: 22 Corr. Area 1: 12,169.5
 Noise: 0.2

Peak table for sample 2 : O 1.0 2 SS Lib

Peak	Aligned Migration Time [s]	Size [bp]	Conc. [pg/μl]	Molarity [pmol/l]	Observations
1	43.00	35	125.00	5,411.3	Lower Marker
2	44.18	43	51.35	1,826.1	
3	47.52	70	190.30	4,117.1	
4	49.63	89	107.56	1,823.8	
5	64.59	250	4,180.72	25,381.4	
6	65.47	259	10,658.59	62,297.4	
7	81.71	478	300.76	952.5	
8	83.55	513	202.74	598.5	
9	84.96	543	77.52	216.2	
10	85.39	553	97.07	266.1	
11	86.76	582	99.58	259.3	
12	88.51	629	143.46	345.7	
13	89.87	672	117.61	265.3	
14	90.92	712	133.36	283.7	
15	92.90	863	55.14	96.8	
16	93.60	916	175.34	289.9	
17	96.37	1,255	101.01	121.9	
18	100.80	1,934	30.14	23.6	
19	102.12	2,265	21.28	14.2	
20	102.60	2,410	98.44	61.9	
21	106.50	4,483	26.42	8.9	
22	109.27	6,596	4.68	1.1	

Assay Class: High Sensitivity DNA Assay
 Data Path: C:\...ents and Settings\Bioanalyzer\2013-12-06\2013-12-06_004.xad

Created: 12/6/2013 1:21:55 PM
 Modified: 12/6/2013 2:07:50 PM

Electropherogram Summary Continued ...

... Peak table for sample 2 : O 1.0 2 SS Lib

Peak	Aligned Migration Time [s]	Size [bp]	Conc. [pg/μl]	Molarity [pmol/l]	Observations
23	110.06	7,276	6.21	1.3	
24	113.00	10,380	75.00	10.9	Upper Marker

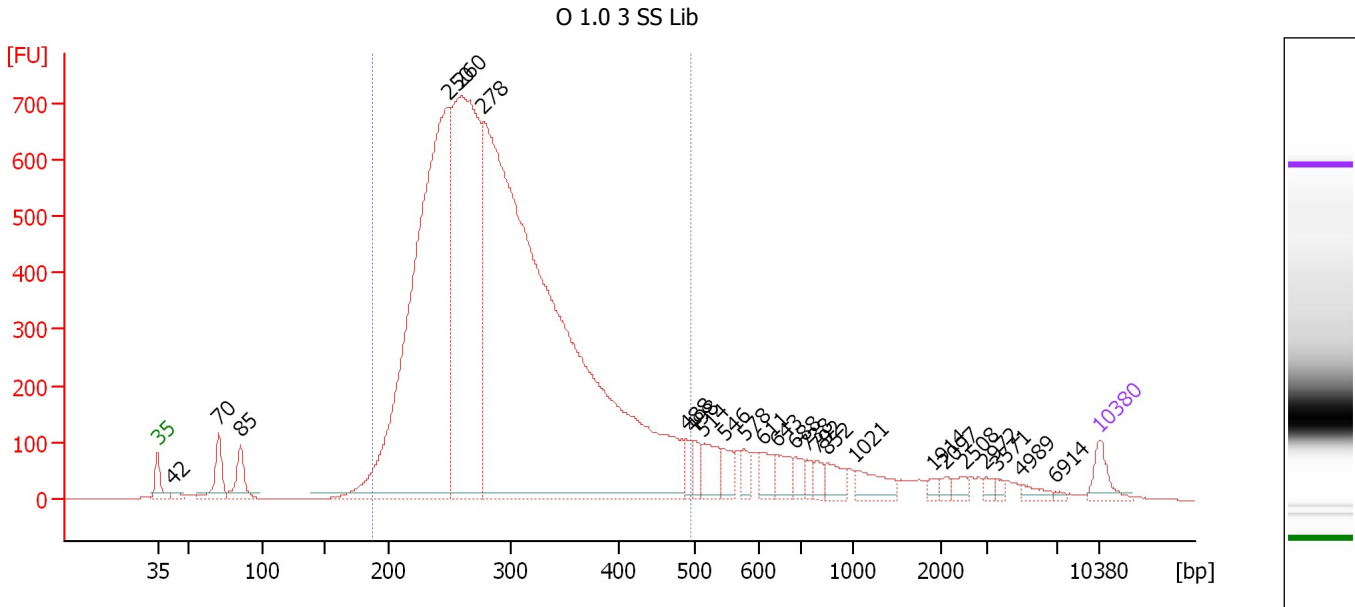
Region table for sample 2 : O 1.0 2 SS Lib

From [bp]	To [bp]	Average Size [bp]	Molarity [pmol/l]	Conc. [pg/μl]	Corr. Area	% of Total	Size distribution in CV [%]	Color
191	499	302	73,333.4	13,749.78	12,169.5	83	22.8	

Assay Class: High Sensitivity DNA Assay
 Data Path: C:\...ents and Settings\Bioanalyzer\2013-12-06\2013-12-06_004.xad

Created: 12/6/2013 1:21:55 PM
 Modified: 12/6/2013 2:07:50 PM

Electropherogram Summary Continued ...



Setpoint Deviations for sample 3 : O 1.0 3 SS Lib

Height Threshold [FU] : 10

Overall Results for sample 3 : O 1.0 3 SS Lib

Number of peaks found: 25 Corr. Area 1: 12,742.4
 Noise: 0.3

Peak table for sample 3 : O 1.0 3 SS Lib

Peak	Aligned Migration Time [s]	Size [bp]	Conc. [pg/μl]	Molarity [pmol/l]	Observations
1	43.00	35	125.00	5,411.3	Lower Marker
2	44.15	42	31.27	1,117.9	
3	47.55	70	211.38	4,554.4	
4	49.14	85	193.34	3,449.9	
5	64.61	250	3,735.97	22,664.0	
6	65.58	260	2,712.41	15,778.6	
7	67.17	278	7,006.98	38,193.1	
8	82.24	488	65.70	204.1	
9	82.82	498	68.33	207.9	
10	83.57	514	151.13	445.8	
11	85.07	546	82.59	229.3	
12	86.57	578	66.00	173.0	
13	87.94	611	80.52	199.8	
14	88.96	643	105.35	248.3	
15	90.37	688	58.25	128.3	
16	91.26	738	42.34	87.0	
17	91.96	792	49.74	95.2	
18	92.76	852	82.77	147.2	
19	94.84	1,021	108.08	160.4	
20	100.67	1,914	19.52	15.5	
21	101.55	2,097	23.41	16.9	
22	102.92	2,508	31.35	18.9	

Assay Class: High Sensitivity DNA Assay
 Data Path: C:\...ents and Settings\Bioanalyzer\2013-12-06\2013-12-06_004.xad


Created: 12/6/2013 1:21:55 PM
 Modified: 12/6/2013 2:07:50 PM

Electropherogram Summary Continued ...

... Peak table for sample 3 : O 1.0 3 SS Lib

Peak	Aligned Migration Time [s]	Size [bp]	Conc. [pg/ μ l]	Molarity [pmol/l]	Observations
23	104.47	2,972	22.44	11.4	
24	105.31	3,571	14.98	6.4	
25	107.17	4,989	30.61	9.3	
26	109.69	6,914	9.11	2.0	
27	113.00	10,380	75.00	10.9	Upper Marker

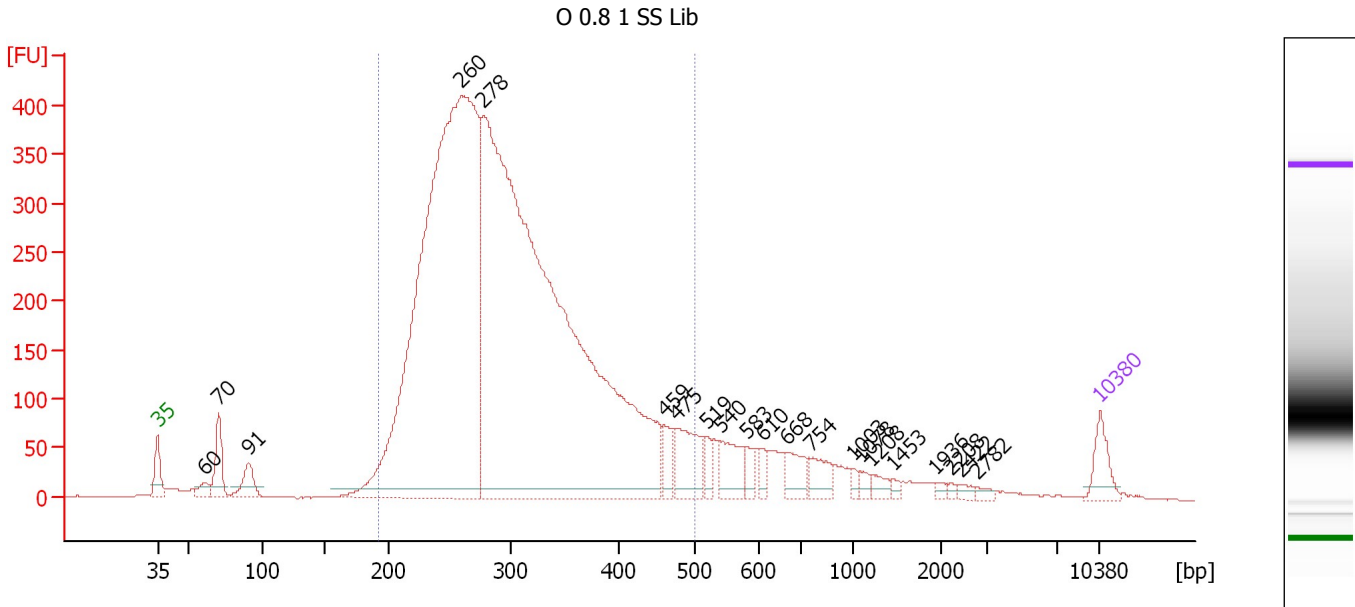
Region table for sample 3 : O 1.0 3 SS Lib

From [bp]	To [bp]	Average Size [bp]	Molarity [pmol/l]	Conc. [pg/ μ l]	Corr. Area	% of Total	Size distribution in CV [%]	Color
187	493	297	68,369.4	12,704.23	12,742.4	85	21.4	

Assay Class: High Sensitivity DNA Assay
 Data Path: C:\...ents and Settings\Bioanalyzer\2013-12-06\2013-12-06_004.xad

Created: 12/6/2013 1:21:55 PM
 Modified: 12/6/2013 2:07:50 PM

Electropherogram Summary Continued ...



Setpoint Deviations for sample 4 : O 0.8 1 SS Lib

Height Threshold [FU] : 10

Overall Results for sample 4 : O 0.8 1 SS Lib

Number of peaks found: 21 Corr. Area 1: 7,282.4
 Noise: 0.4

Peak table for sample 4 : O 0.8 1 SS Lib

Pea k	Aligned Migration Time [s]	Size [bp]	Conc. [pg/μl]	Molarity [pmol/l]	Observations
1	43.00	35	125.00	5,411.3	Lower Marker
2	46.47	60	48.52	1,217.3	
3	47.54	70	168.29	3,633.4	
4	49.76	91	115.94	1,939.4	
5	65.55	260	4,231.52	24,651.4	
6	67.19	278	5,253.58	28,613.0	
7	80.62	459	83.42	275.2	
8	81.51	475	198.26	632.4	
9	83.83	519	48.49	141.5	
10	84.80	540	134.47	377.3	
11	86.81	583	45.35	117.9	
12	87.92	610	40.48	100.6	
13	89.74	668	88.36	200.5	
14	91.48	754	79.28	159.3	
15	94.72	1,003	17.79	26.9	
16	95.21	1,078	20.44	28.7	
17	96.06	1,208	32.59	40.9	
18	97.66	1,453	14.62	15.2	
19	100.81	1,936	13.85	10.8	
20	101.93	2,208	9.53	6.5	
21	102.64	2,422	15.09	9.4	
22	103.84	2,782	13.87	7.6	

Assay Class: High Sensitivity DNA Assay
 Data Path: C:\...ents and Settings\Bioanalyzer\2013-12-06\2013-12-06_004.xad


Created: 12/6/2013 1:21:55 PM
 Modified: 12/6/2013 2:07:50 PM

Electropherogram Summary Continued ...

... Peak table for sample 4 : O 0.8 1 SS Lib

Peak	Aligned Migration Time [s]	Size [bp]	Conc. [pg/μl]	Molarity [pmol/l]	Observations
23	113.00	10,380	75.00	10.9	Upper Marker

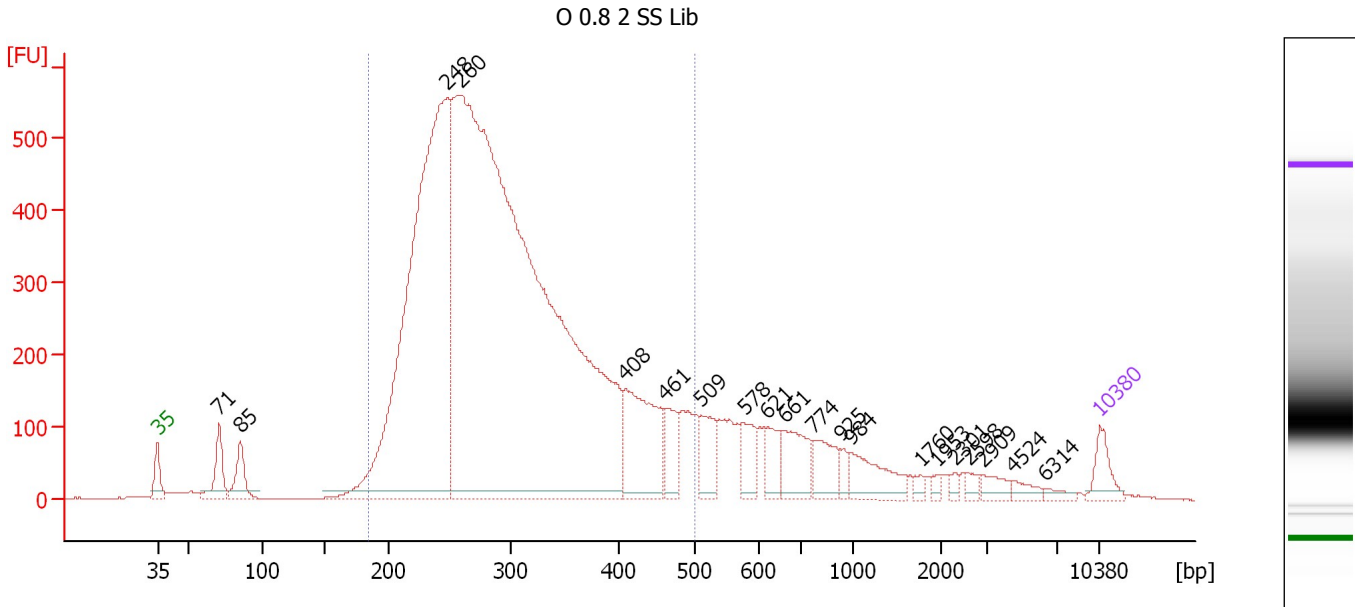
Region table for sample 4 : O 0.8 1 SS Lib

From [bp]	To [bp]	Average Size [bp]	Molarity [pmol/l]	Conc. [pg/μl]	Corr. Area	% of Total	Size distribution in CV [%]	Color
192	500	303	48,543.2	9,187.50	7,282.4	85	21.6	

Assay Class: High Sensitivity DNA Assay
 Data Path: C:\...ents and Settings\Bioanalyzer\2013-12-06\2013-12-06_004.xad

Created: 12/6/2013 1:21:55 PM
 Modified: 12/6/2013 2:07:50 PM

Electropherogram Summary Continued ...



Setpoint Deviations for sample 5 : O 0.8 2 SS Lib

Height Threshold [FU] : 10

Overall Results for sample 5 : O 0.8 2 SS Lib

Number of peaks found: 20 Corr. Area 1: 10,425.5
 Noise: 0.4

Peak table for sample 5 : O 0.8 2 SS Lib


Peak	Aligned Migration Time [s]	Size [bp]	Conc. [pg/μl]	Molarity [pmol/l]	Observations
1	43.00	35	125.00	5,411.3	Lower Marker
2	47.59	71	184.63	3,955.9	
3	49.17	85	159.99	2,846.1	
4	64.49	248	3,237.72	19,748.8	
5	65.57	260	7,030.13	40,920.6	
6	77.73	408	477.43	1,772.1	
7	80.70	461	150.23	494.1	
8	83.36	509	153.35	456.3	
9	86.56	578	125.73	329.8	
10	88.27	621	115.16	280.9	
11	89.53	661	187.28	429.3	
12	91.74	774	145.01	283.7	
13	93.72	925	35.74	58.5	
14	94.49	984	164.14	252.8	
15	99.67	1,760	18.51	15.9	
16	100.93	1,953	14.32	11.1	
17	102.23	2,301	18.94	12.5	
18	103.23	2,598	22.31	13.0	
19	104.26	2,909	43.77	22.8	
20	106.56	4,524	30.59	10.2	
21	108.90	6,314	20.94	5.0	
22	113.00	10,380	75.00	10.9	Upper Marker

Assay Class: High Sensitivity DNA Assay
Data Path: C:\...ents and Settings\Bioanalyzer\2013-12-06\2013-12-06_004.xad

Created: 12/6/2013 1:21:55 PM
Modified: 12/6/2013 2:07:50 PM

Electropherogram Summary Continued ...

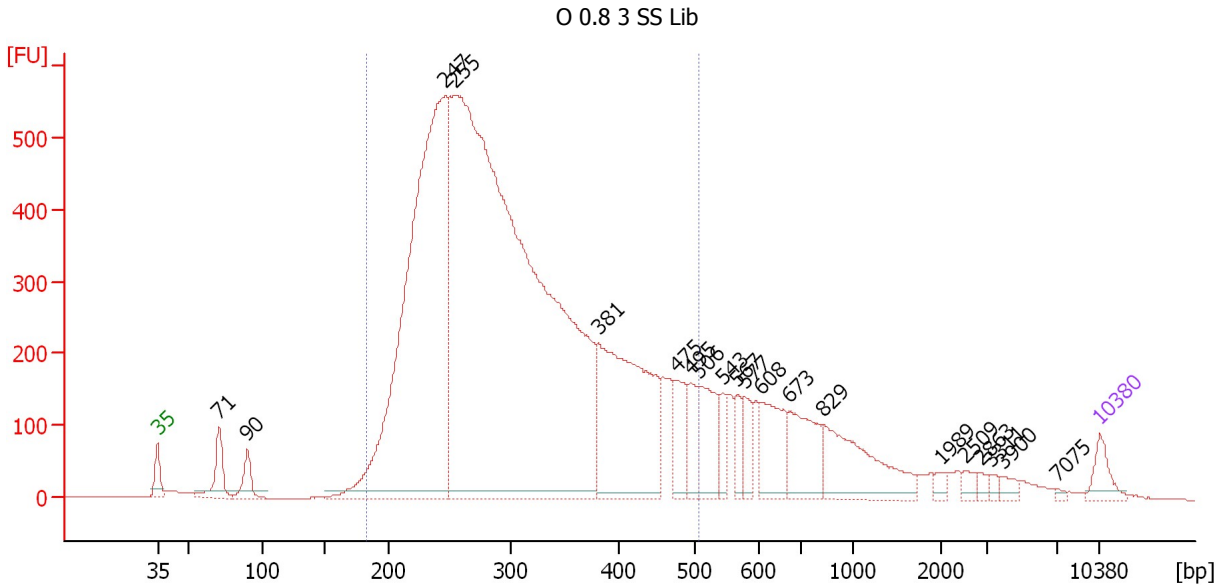
... Region table for sample 5 : O 0.8 2 SS Lib

From [bp]	To [bp]	Average Size [bp]	Molarity [pmol/l]	Conc. [pg/ μ l]	Corr. Area	% of Total	Size distribution in CV [%]	Color
184	500	301	56,138.5	10,447.10	10,425.5	82	23.3	

Assay Class: High Sensitivity DNA Assay
 Data Path: C:\...ents and Settings\Bioanalyzer\2013-12-06\2013-12-06_004.xad

Created: 12/6/2013 1:21:55 PM
 Modified: 12/6/2013 2:07:50 PM

Electropherogram Summary Continued ...



Setpoint Deviations for sample 6 : O 0.8 3 SS Lib

Height Threshold [FU] : 10

Overall Results for sample 6 : O 0.8 3 SS Lib

Number of peaks found: 20 Corr. Area 1: 10,990.8
 Noise: 0.4

Peak table for sample 6 : O 0.8 3 SS Lib

Pea k	Aligned Migration Time [s]	Size [bp]	Conc. [pg/μl]	Molarity [pmol/l]	Observations
1	43.00	35	125.00	5,411.3	Lower Marker
2	47.58	71	211.42	4,537.3	
3	49.67	90	132.28	2,233.4	
4	64.37	247	3,671.64	22,514.2	
5	65.09	255	7,352.03	43,670.1	
6	75.75	381	1,229.81	4,886.4	
7	81.52	475	206.84	659.8	
8	82.65	495	146.76	449.2	
9	83.19	506	277.50	831.6	
10	84.96	543	96.15	268.0	
11	86.05	567	90.87	242.9	
12	86.55	577	120.37	315.8	
13	87.87	608	269.76	671.9	
14	89.91	673	295.41	665.1	
15	92.45	829	434.77	795.1	
16	101.16	1,989	25.92	19.7	
17	102.93	2,509	33.01	19.9	
18	104.11	2,863	22.05	11.7	
19	104.97	3,311	17.20	7.9	
20	105.74	3,900	31.31	12.2	
21	109.87	7,075	8.50	1.8	
22	113.00	10,380	75.00	10.9	Upper Marker

Assay Class: High Sensitivity DNA Assay
Data Path: C:\...ents and Settings\Bioanalyzer\2013-12-06\2013-12-06_004.xad

Created: 12/6/2013 1:21:55 PM
Modified: 12/6/2013 2:07:50 PM

Electropherogram Summary Continued ...

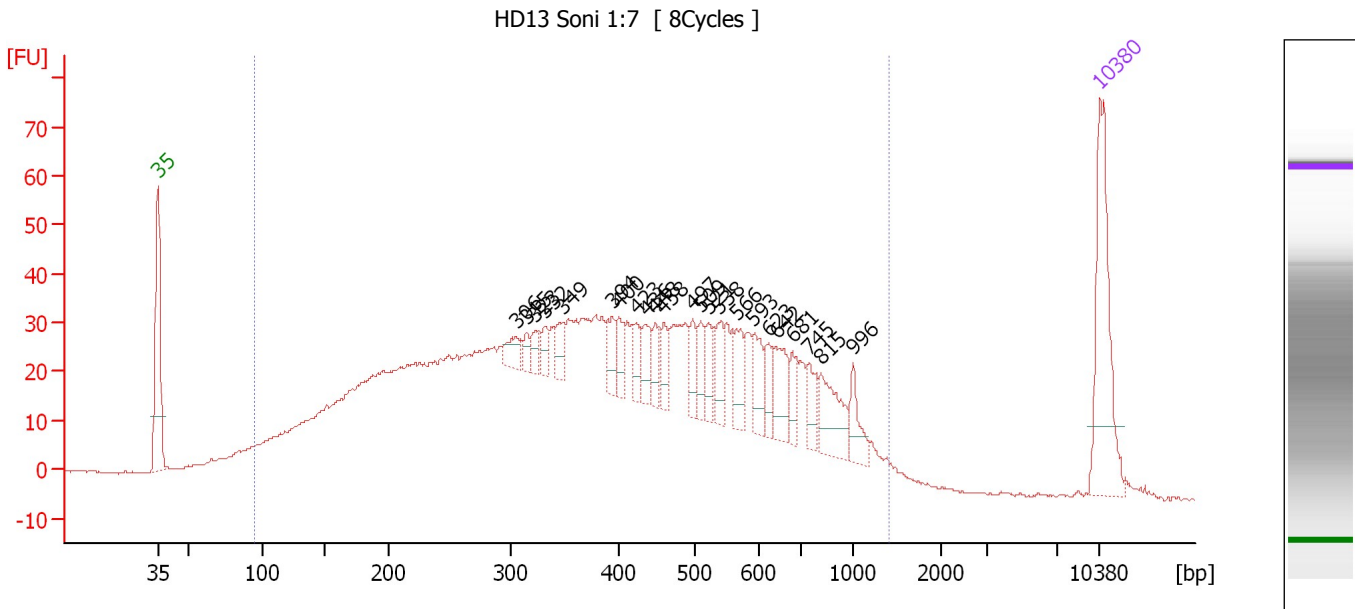
... Region table for sample 6 : O 0.8 3 SS Lib

From [bp]	To [bp]	Average Size [bp]	Molarity [pmol/l]	Conc. [pg/μl]	Corr. Area	% of Total	Size distribution in CV [%]	Color
183	507	307	64,237.3	12,081.66	10,990.8	81	24.7	■

Assay Class: High Sensitivity DNA Assay
 Data Path: C:\...ents and Settings\Bioanalyzer\2013-12-06\2013-12-06_004.xad

Created: 12/6/2013 1:21:55 PM
 Modified: 12/6/2013 2:07:50 PM

Electropherogram Summary Continued ...



Overall Results for sample 7 : HD13 Soni 1:7

Number of peaks found: 23 Corr. Area 1: 1,589.6
 Noise: 0.3

Peak table for sample 7 : HD13 Soni 1:7

Peak	Aligned Migration Time [s]	Size [bp]	Conc. [pg/μl]	Molarity [pmol/l]	Observations
1	43.00	35	125.00	5,411.3	Lower Marker
2	69.63	306	15.55	77.1	
3	70.36	315	8.57	41.3	
4	71.05	323	9.98	46.8	
5	71.73	332	11.48	52.4	
6	73.10	349	13.97	60.7	
7	76.76	394	19.10	73.5	
8	77.27	400	15.66	59.3	
9	78.55	423	16.54	59.3	
10	79.28	436	19.19	66.8	
11	79.97	448	15.76	53.4	
12	80.56	458	16.17	53.5	
13	82.76	497	17.68	53.9	
14	83.35	509	17.79	53.0	
15	83.90	521	19.04	55.4	
16	84.73	538	22.06	62.1	
17	86.01	566	24.76	66.3	
18	87.29	593	23.24	59.4	
19	88.34	623	15.27	37.1	
20	88.93	642	28.75	67.8	
21	90.17	681	15.67	34.8	
22	91.36	745	17.90	36.4	
23	92.27	815	36.34	67.5	
24	94.65	996	17.62	26.8	
25	113.00	10,380	75.00	10.9	Upper Marker

Assay Class: High Sensitivity DNA Assay
Data Path: C:\...ents and Settings\Bioanalyzer\2013-12-06\2013-12-06_004.xad

Created: 12/6/2013 1:21:55 PM
Modified: 12/6/2013 2:07:50 PM

Electropherogram Summary Continued ...

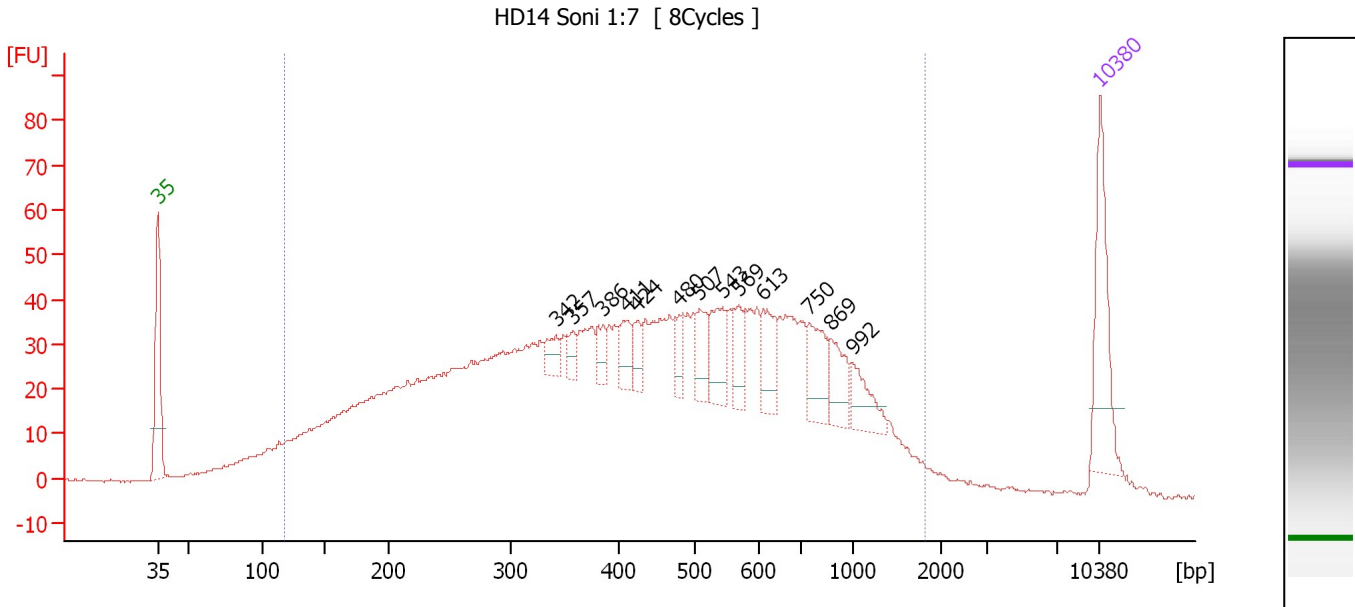
... Region table for sample 7 : HD13 Soni 1:7

From [bp]	To [bp]	Average Size [bp]	Molarity [pmol/l]	Conc. [pg/μl]	Corr. Area	% of Total	Size distribution in CV [%]	Color
95	1,400	429	11,702.9	2,223.85	1,589.6	97	51.1	■

Assay Class: High Sensitivity DNA Assay
 Data Path: C:\...ents and Settings\Bioanalyzer\2013-12-06\2013-12-06_004.xad

Created: 12/6/2013 1:21:55 PM
 Modified: 12/6/2013 2:07:50 PM

Electropherogram Summary Continued ...



Overall Results for sample 8 : HD14 Soni 1:7

Number of peaks found: 13 Corr. Area 1: 1,817.5
 Noise: 0.2

Peak table for sample 8 : HD14 Soni 1:7

Peak	Aligned Migration Time [s]	Size [bp]	Conc. [pg/μl]	Molarity [pmol/l]	Observations
1	43.00	35	125.00	5,411.3	Lower Marker
2	72.60	342	20.38	90.2	
3	73.80	357	14.65	62.2	
4	76.11	386	19.39	76.2	
5	77.91	411	26.88	99.0	
6	78.65	424	19.49	69.6	
7	81.78	480	19.71	62.2	
8	83.26	507	32.35	96.7	
9	84.96	543	45.02	125.5	
10	86.16	569	29.53	78.6	
11	88.01	613	40.61	100.4	
12	91.42	750	48.06	97.1	
13	92.99	869	34.72	60.5	
14	94.60	992	32.06	48.9	
15	113.00	10,380	75.00	10.9	Upper Marker

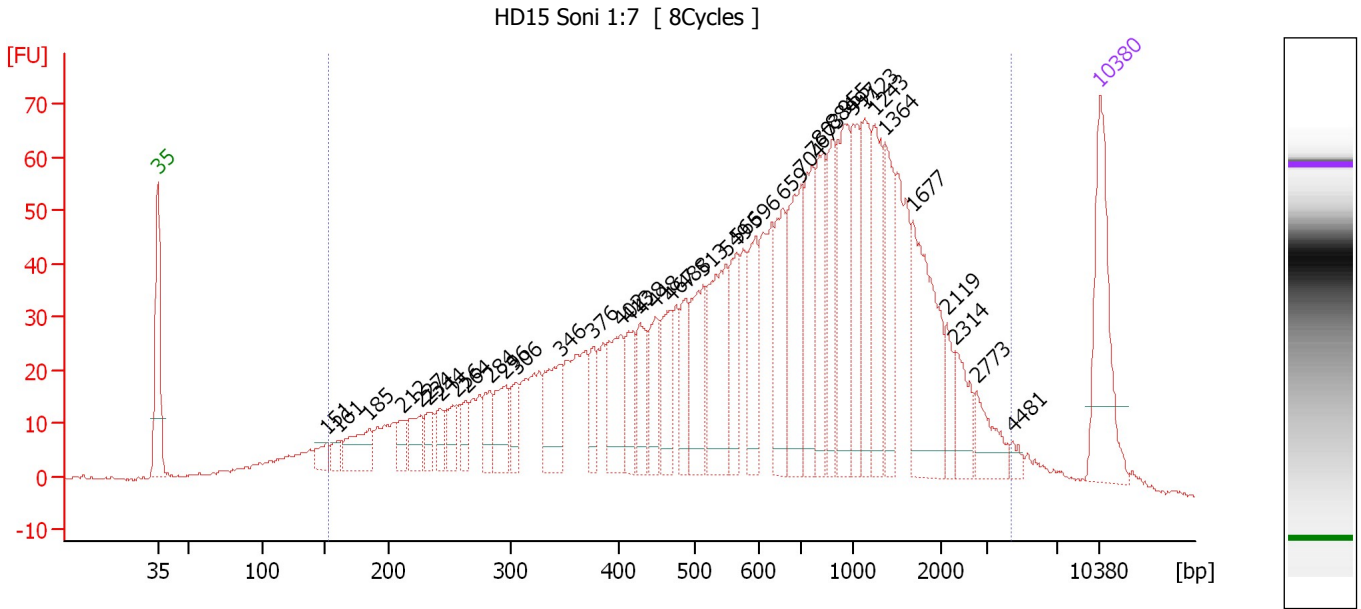
Region table for sample 8 : HD14 Soni 1:7

From [bp]	To [bp]	Average Size [bp]	Molarity [pmol/l]	Conc. [pg/μl]	Corr. Area	% of Total	Size distribution in CV [%]	Color
117	1,815	496	13,144.4	2,788.26	1,817.5	95	58.3	Blue

Assay Class: High Sensitivity DNA Assay
 Data Path: C:\...ents and Settings\Bioanalyzer\2013-12-06\2013-12-06_004.xad

Created: 12/6/2013 1:21:55 PM
 Modified: 12/6/2013 2:07:50 PM

Electropherogram Summary Continued ...



Overall Results for sample 9 : HD15 Soni 1:7

Number of peaks found: 39 Corr. Area 1: 1,924.2
 Noise: 0.4

Peak table for sample 9 : HD15 Soni 1:7

Peak	Aligned Migration Time [s]	Size [bp]	Conc. [pg/μl]	Molarity [pmol/l]	Observations
1	43.00	35	125.00	5,411.3	Lower Marker
2	55.53	151	16.60	166.8	
3	56.51	161	12.38	116.3	
4	58.74	185	42.35	346.1	
5	61.20	212	16.41	117.2	
6	62.54	227	28.92	193.0	
7	63.15	234	19.28	125.1	
8	64.07	244	17.27	107.3	
9	65.19	256	24.44	144.6	
10	65.88	264	18.59	106.8	
11	67.69	284	26.28	140.3	
12	68.81	296	41.41	212.0	
13	69.64	306	23.06	114.3	
14	72.89	346	54.85	240.2	
15	75.35	376	25.50	102.7	
16	77.40	402	58.55	220.5	
17	78.00	413	35.66	130.8	
18	78.84	428	38.75	137.3	
19	80.00	448	39.54	133.7	
20	81.06	467	43.43	140.9	
21	82.22	488	36.31	112.9	
22	83.52	513	64.46	190.5	
23	85.24	549	89.99	248.2	
24	86.03	566	46.60	124.7	
25	87.42	596	50.48	128.3	

Assay Class: High Sensitivity DNA Assay
 Data Path: C:\...ents and Settings\Bioanalyzer\2013-12-06\2013-12-06_004.xad


Created: 12/6/2013 1:21:55 PM
 Modified: 12/6/2013 2:07:50 PM

Electropherogram Summary Continued ...

... Peak table for sample 9 : HD15 Soni 1:7

Peak	Aligned Migration Time [s]	Size [bp]	Conc. [pg/μl]	Molarity [pmol/l]	Observations
26	89.47	659	62.73	144.2	
27	90.81	704	91.04	196.0	
28	91.65	767	67.02	132.3	
29	92.11	803	61.67	116.4	
30	93.18	884	53.94	92.4	
31	94.11	955	75.99	120.6	
32	94.66	997	57.32	87.1	
33	95.50	1,123	59.84	80.8	
34	96.29	1,243	59.95	73.1	
35	97.08	1,364	51.22	56.9	
36	99.12	1,677	97.49	88.1	
37	101.63	2,119	17.60	12.6	
38	102.28	2,314	26.79	17.5	
39	103.81	2,773	25.58	14.0	
40	106.50	4,481	5.48	1.9	
41	113.00	10,380	75.00	10.9	Upper Marker

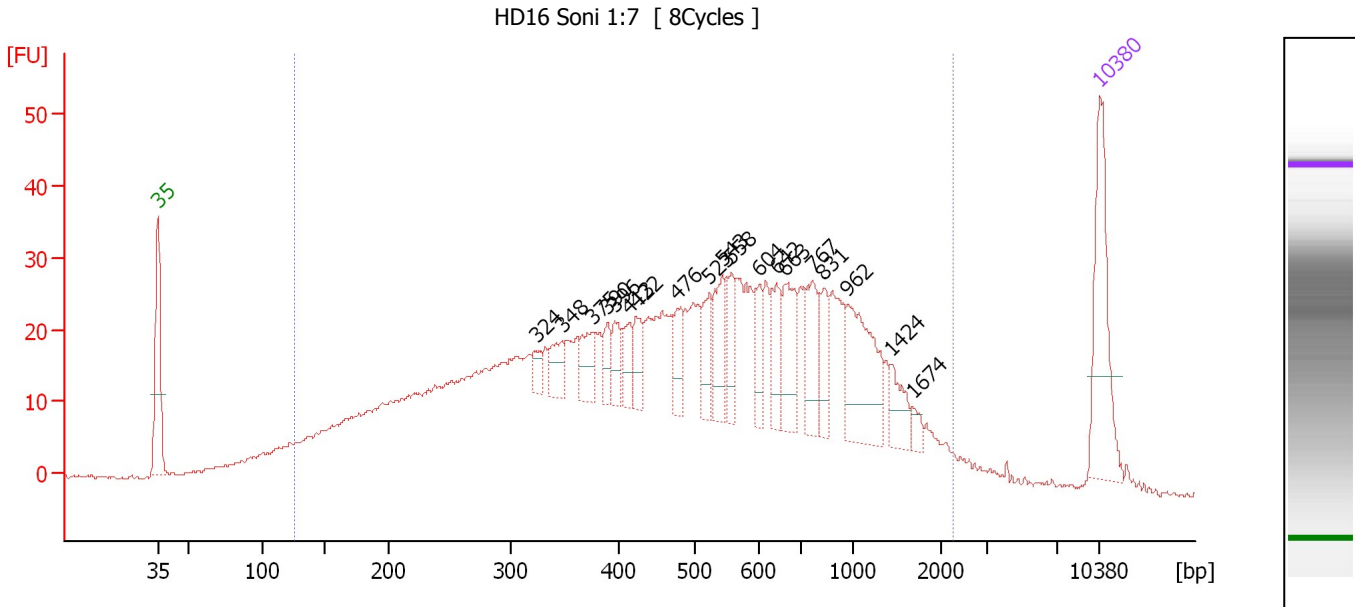
Region table for sample 9 : HD15 Soni 1:7

From [bp]	To [bp]	Average Size [bp]	Molarity [pmol/l]	Conc. [pg/μl]	Corr. Area	% of Total	Size distribution in CV [%]	Color
153	4,430	875	7,856.5	2,429.27	1,924.2	94	75.0	

Assay Class: High Sensitivity DNA Assay
 Data Path: C:\...ents and Settings\Bioanalyzer\2013-12-06\2013-12-06_004.xad

Created: 12/6/2013 1:21:55 PM
 Modified: 12/6/2013 2:07:50 PM

Electropherogram Summary Continued ...



Overall Results for sample 10 : HD16 Soni 1:7

Number of peaks found: 19 Corr. Area 1: 1,149.1
 Noise: 0.3

Peak table for sample 10 : HD16 Soni 1:7

Peak	Aligned Migration Time [s]	Size [bp]	Conc. [pg/μl]	Molarity [pmol/l]	Observations
1	43.00	35	125.00	5,411.3	Lower Marker
2	71.12	324	12.68	59.3	
3	73.03	348	23.08	100.6	
4	75.27	375	29.91	120.7	
5	76.44	390	18.52	72.0	
6	76.95	396	22.05	84.3	
7	78.02	413	20.68	75.8	
8	78.54	422	26.60	95.4	
9	81.57	476	23.45	74.6	
10	83.99	523	27.27	79.0	
11	84.93	543	44.15	123.3	
12	85.62	558	31.71	86.1	
13	87.72	604	24.61	61.8	
14	88.94	642	31.01	73.2	
15	89.59	663	47.11	107.7	
16	91.64	767	41.08	81.2	
17	92.48	831	27.61	50.4	
18	94.21	962	81.73	128.7	
19	97.47	1,424	22.71	24.2	
20	99.10	1,674	7.56	6.8	
21	113.00	10,380	75.00	10.9	Upper Marker

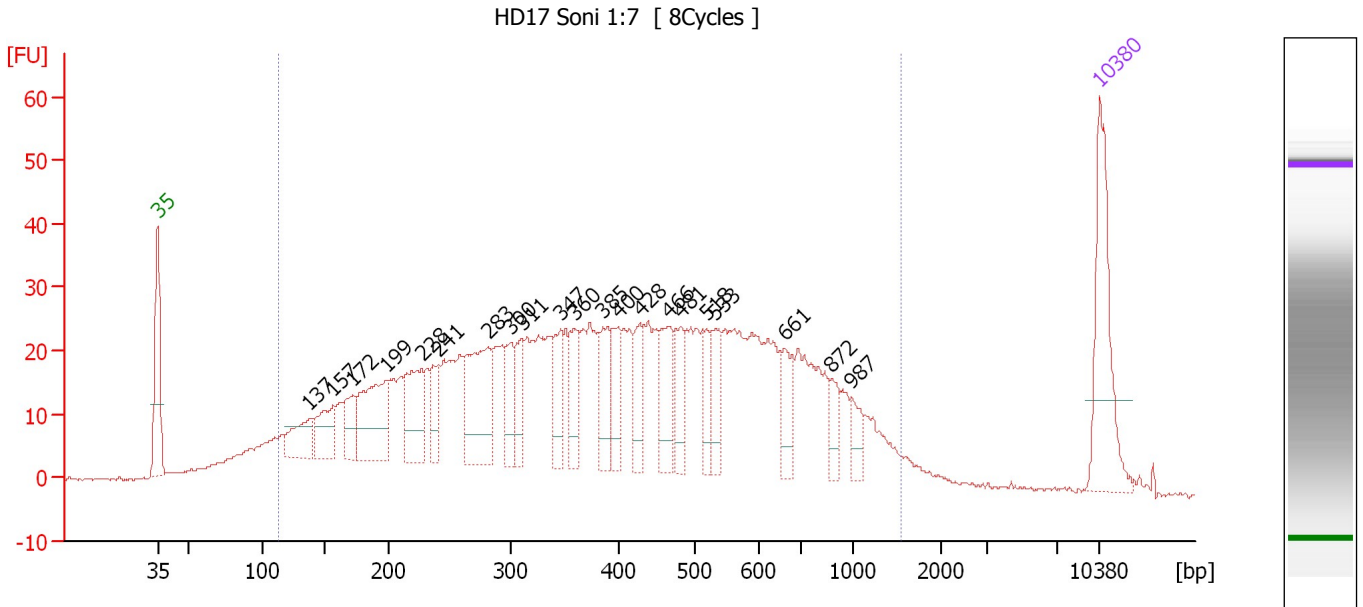
Region table for sample 10 : HD16 Soni 1:7

From [bp]	To [bp]	Average Size [bp]	Molarity [pmol/l]	Conc. [pg/μl]	Corr. Area	% of Total	Size distribution in CV [%]	Color
125	2,241	583	10,117.6	2,385.16	1,149.1	94	64.7	Blue

Assay Class: High Sensitivity DNA Assay
 Data Path: C:\...ents and Settings\Bioanalyzer\2013-12-06\2013-12-06_004.xad

Created: 12/6/2013 1:21:55 PM
 Modified: 12/6/2013 2:07:50 PM

Electropherogram Summary Continued ...



Overall Results for sample 11 : HD17 Soni 1:7

Number of peaks found: 21 Corr. Area 1: 1,208.8
 Noise: 0.3

Peak table for sample 11 : HD17 Soni 1:7

Peak	Aligned Migration Time [s]	Size [bp]	Conc. [pg/μl]	Molarity [pmol/l]	Observations
1	43.00	35	125.00	5,411.3	Lower Marker
2	54.28	137	41.68	459.6	
3	56.07	157	44.21	427.8	
4	57.53	172	31.83	279.9	
5	59.97	199	94.77	722.6	
6	62.65	228	66.32	440.3	
7	63.83	241	30.30	190.4	
8	67.59	283	99.98	536.2	
9	69.19	300	30.65	154.7	
10	70.08	311	30.64	149.2	
11	72.95	347	32.68	142.8	
12	74.03	360	34.92	147.0	
13	76.05	385	40.36	158.8	
14	77.27	400	35.03	132.6	
15	78.87	428	32.62	115.4	
16	81.03	466	46.55	151.2	
17	81.83	481	33.56	105.8	
18	83.76	518	26.00	76.1	
19	84.46	533	31.43	89.4	
20	89.54	661	32.63	74.7	
21	93.02	872	17.42	30.3	
22	94.52	987	16.58	25.5	
23	113.00	10,380	75.00	10.9	Upper Marker

Assay Class: High Sensitivity DNA Assay
Data Path: C:\...ents and Settings\Bioanalyzer\2013-12-06\2013-12-06_004.xad

Created: 12/6/2013 1:21:55 PM
Modified: 12/6/2013 2:07:50 PM

Electropherogram Summary Continued ...

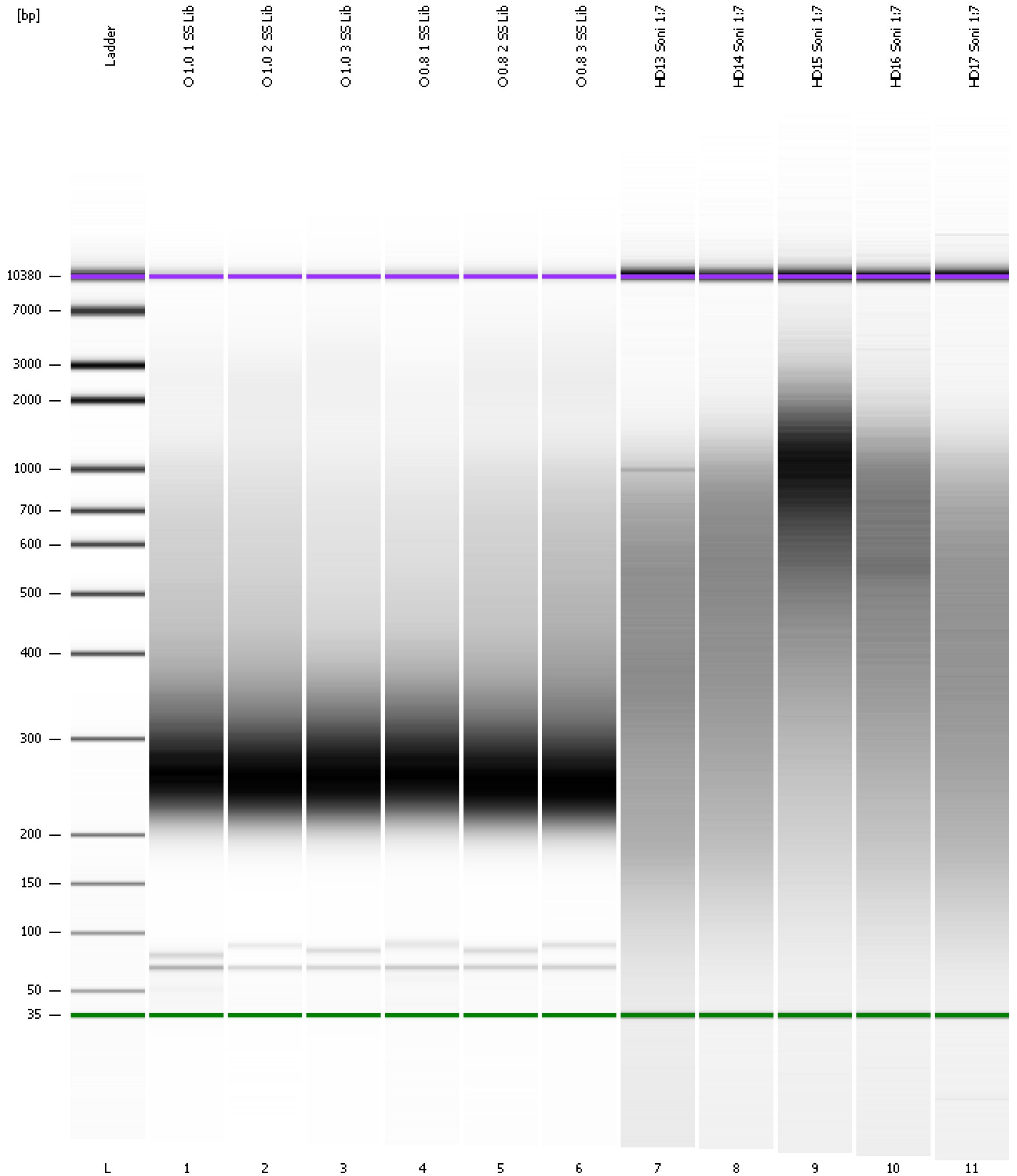
... Region table for sample 11 : HD17 Soni 1:7

From [bp]	To [bp]	Average Size [bp]	Molarity [pmol/l]	Conc. [pg/μl]	Corr. Area	% of Total	Size distribution in CV [%]	Color
113	1,529	448	10,694.4	2,110.56	1,208.8	92	54.8	■

Assay Class: High Sensitivity DNA Assay
Data Path: C:\...ents and Settings\Bioanalyzer\2013-12-06\2013-12-06_004.xad

Created: 12/6/2013 1:21:55 PM
Modified: 12/6/2013 2:07:50 PM

Gel Image



Assay Class: High Sensitivity DNA Assay
Data Path: C:\...ents and Settings\Bioanalyzer\2013-12-06\2013-12-06_004.xad

Created: 12/6/2013 1:21:55 PM
Modified: 12/6/2013 2:07:50 PM

Curves

Standard Curve

