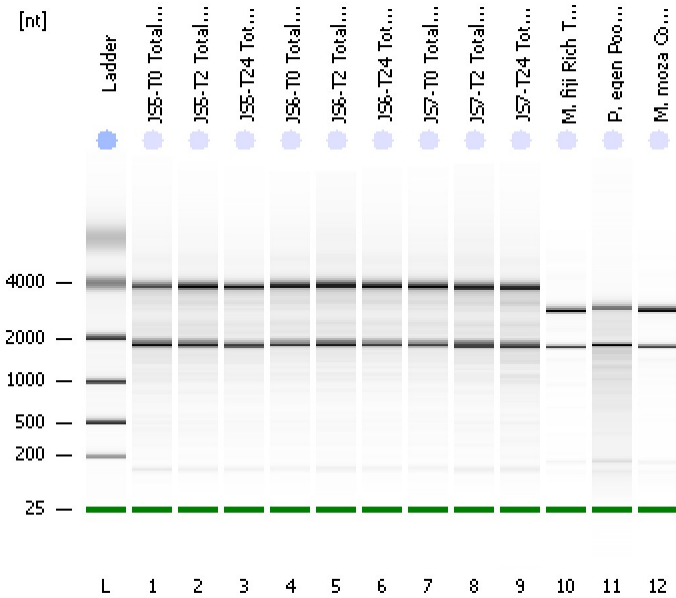


Assay Class: Eukaryote Total RNA Nano
 Data Path: C:\...ents and Settings\Bioanalyzer\2013-12-09\2013-12-09_005.xad

Created: 12/9/2013 1:48:43 PM
 Modified: 12/9/2013 2:19:32 PM

Electrophoresis File Run Summary



Instrument Information:

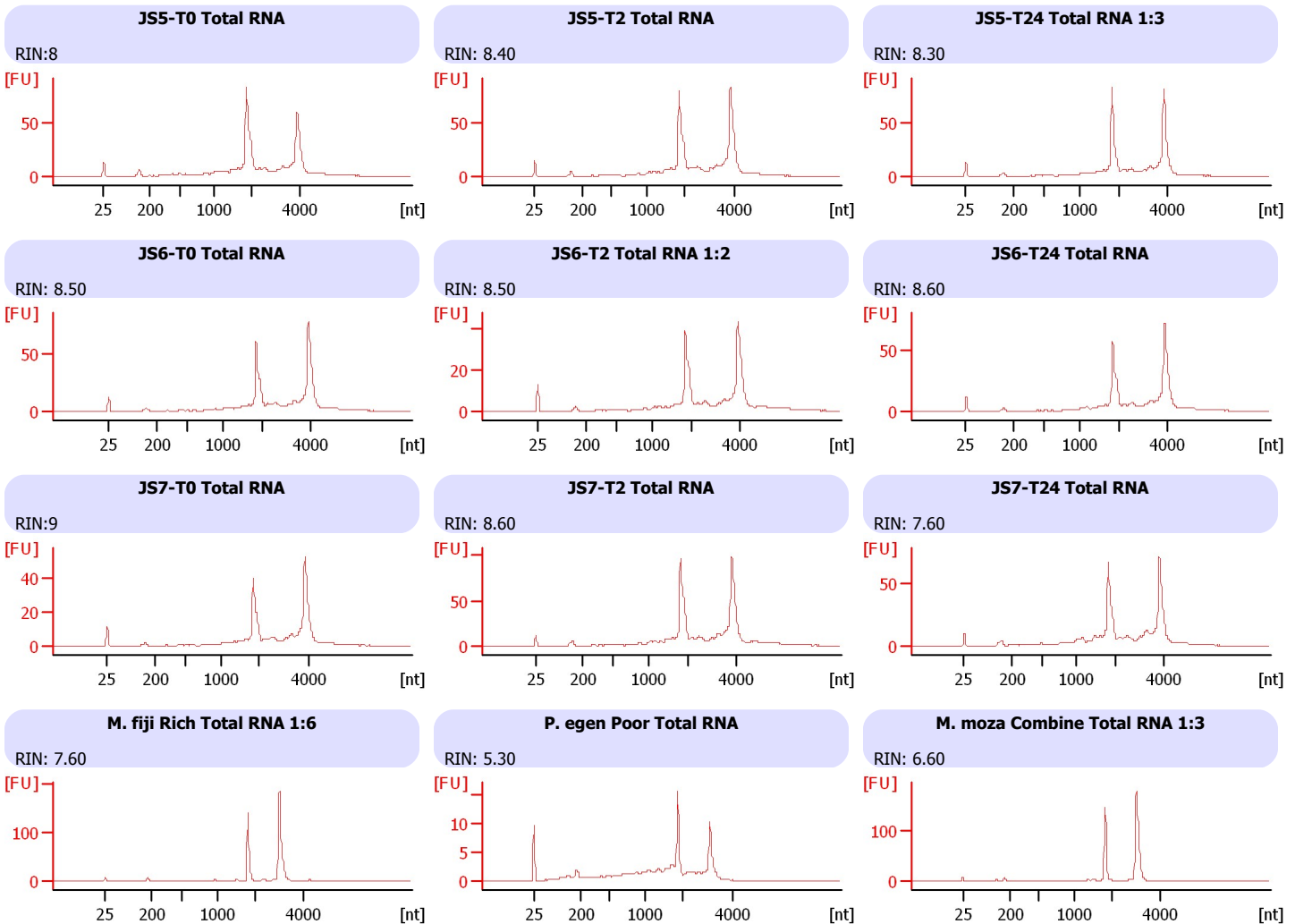
Instrument Name: DE13701086 Firmware: C.01.069
 Serial#: DE13701086 Type: G2938B

Assay Information:

Assay Origin Path: C:\Program Files\Agilent\2100 bioanalyzer\2100 expert\assays\RNA\Eukaryote Total RNA Nano Series II.xsy
 Assay Class: Eukaryote Total RNA Nano
 Version: 2.6
 Assay Comments: Total RNA Analysis ng sensitivity (Eukaryote)
 © Copyright 2003 - 2009 Agilent Technologies, Inc.

Chip Information:

Chip Lot #:
 Reagent Kit Lot #:
 Chip Comments:



Assay Class: Eukaryote Total RNA Nano
 Data Path: C:\...ents and Settings\Bioanalyzer\2013-12-09\2013-12-09_005.xad

Created: 12/9/2013 1:48:43 PM
 Modified: 12/9/2013 2:19:32 PM

Electrophoresis File Run Summary (Chip Summary)

Sample Name	Sample Comment	Status	Result Label	Result Color
JS5-T0 Total RNA		✓	RIN:8	
JS5-T2 Total RNA		✓	RIN: 8.40	
JS5-T24 Total RNA 1:3		✓	RIN: 8.30	
JS6-T0 Total RNA		✓	RIN: 8.50	
JS6-T2 Total RNA 1:2		✓	RIN: 8.50	
JS6-T24 Total RNA		✓	RIN: 8.60	
JS7-T0 Total RNA		✓	RIN:9	
JS7-T2 Total RNA		✓	RIN: 8.60	
JS7-T24 Total RNA		✓	RIN: 7.60	
M. fiji Rich Total RNA 1:6		✓	RIN: 7.60	
P. egen Poor Total RNA		✓	RIN: 5.30	
M. moza Combine Total RNA 1:3		✓	RIN: 6.60	
Ladder		✓	All Other Samples	

Chip Lot #

Reagent Kit Lot #

Chip Comments :

Assay Class: Eukaryote Total RNA Nano
Data Path: C:\...ents and Settings\Bioanalyzer\2013-12-09\2013-12-09_005.xad

Created: 12/9/2013 1:48:43 PM
Modified: 12/9/2013 2:19:32 PM

Electrophoresis Assay Details

General Analysis Settings

Number of Available Sample and Ladder Wells (Max.) : 13
Minimum Visible Range [s] : 17
Maximum Visible Range [s] : 70
Start Analysis Time Range [s] : 19
End Analysis Time Range [s] : 69
Ladder Concentration [ng/ μ l] : 150
Lower Marker Concentration [ng/ μ l] : 0
Upper Marker Concentration [ng/ μ l] : 0
Used Lower Marker for Quantitation
Standard Curve Fit is Logarithmic
Show Data Aligned to Lower Marker

Integrator Settings

Integration Start Time [s] : 19
Integration End Time [s] : 69
Slope Threshold : 0.6
Height Threshold [FU] : 0.5
Area Threshold : 0.2
Width Threshold [s] : 0.5
Baseline Plateau [s] : 6

Filter Settings

Filter Width [s] : 0.5
Polynomial Order : 4

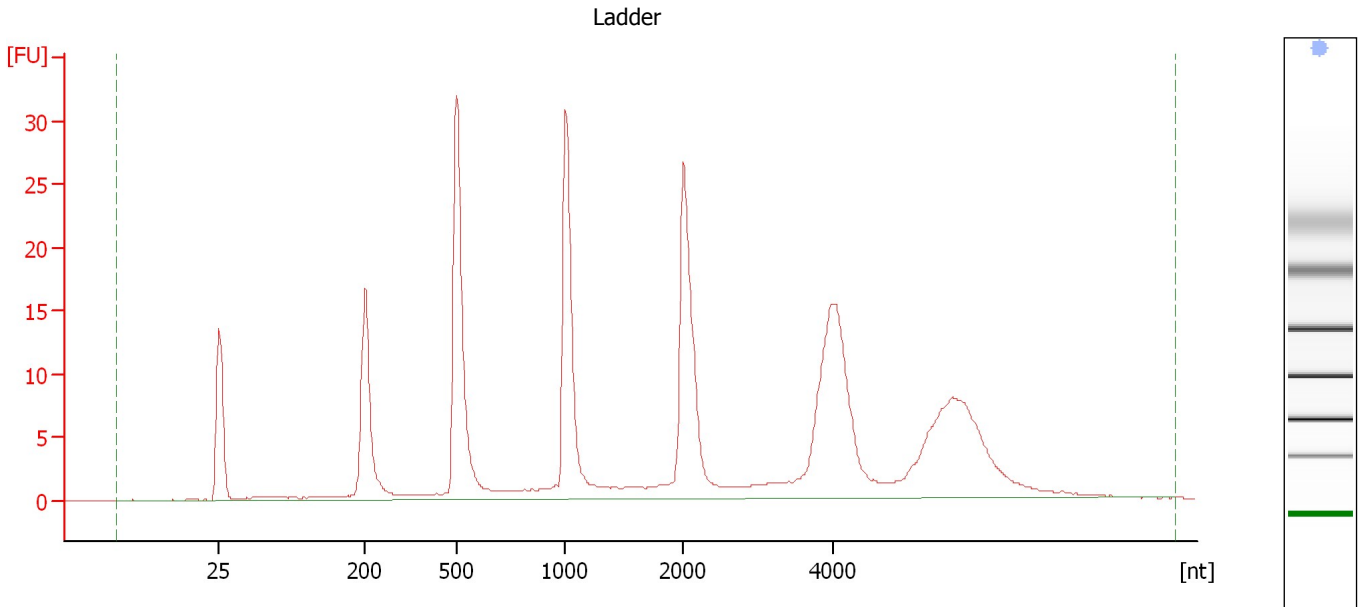
Ladder

Ladder Peak	Size
1	25
2	200
3	500
4	1000
5	2000
6	4000

Assay Class: Eukaryote Total RNA Nano
Data Path: C:\...ents and Settings\Bioanalyzer\2013-12-09\2013-12-09_005.xad

Created: 12/9/2013 1:48:43 PM
Modified: 12/9/2013 2:19:32 PM

Electropherogram Summary



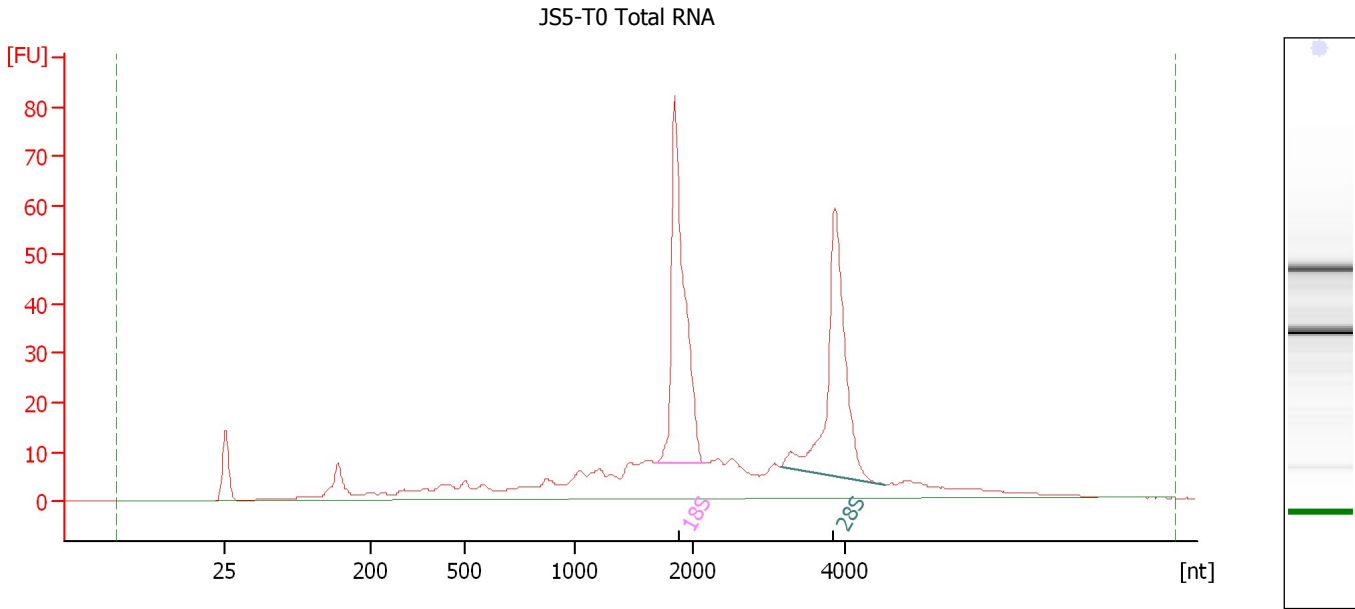
Overall Results for Ladder

RNA Area:	275.5	Result Flagging Color:	
RNA Concentration:	150 ng/ μ l	Result Flagging Label:	All Other Samples

Assay Class: Eukaryote Total RNA Nano
 Data Path: C:\...ents and Settings\Bioanalyzer\2013-12-09\2013-12-09_005.xad

Created: 12/9/2013 1:48:43 PM
 Modified: 12/9/2013 2:19:32 PM

Electropherogram Summary Continued ...



Overall Results for sample 1 : JS5-T0 Total RNA

RNA Area:	501.4	RNA Integrity Number (RIN):	8 (B.02.08)
RNA Concentration:	273 ng/μl	Result Flagging Color:	
rRNA Ratio [28s / 18s]:	0.9	Result Flagging Label:	RIN:8

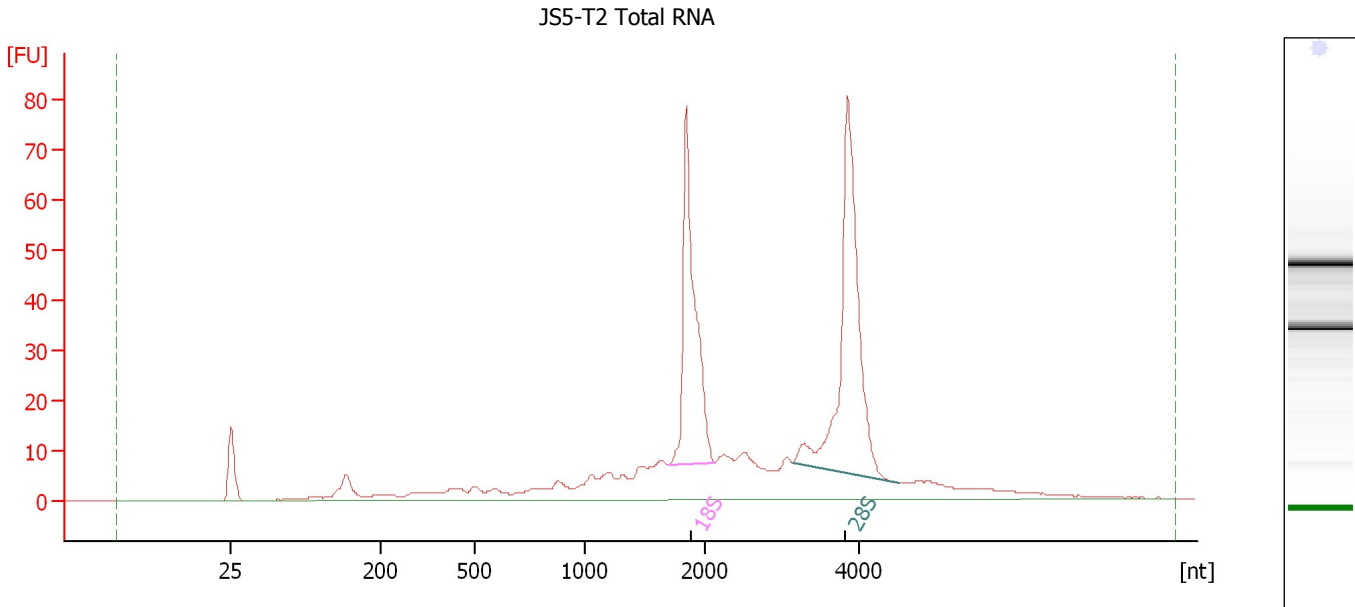
Fragment table for sample 1 : JS5-T0 Total RNA

Name	Start Size [nt]	End Size [nt]	Area	% of total Area
18S	1,680	2,147	107.4	21.4
28S	3,144	4,520	96.9	19.3

Assay Class: Eukaryote Total RNA Nano
Data Path: C:\...ents and Settings\Bioanalyzer\2013-12-09\2013-12-09_005.xad

Created: 12/9/2013 1:48:43 PM
Modified: 12/9/2013 2:19:32 PM

Electropherogram Summary Continued ...



Overall Results for sample 2 : JS5-T2 Total RNA

RNA Area: 506.5 RNA Integrity Number (RIN): 8.4 (B.02.08)
RNA Concentration: 276 ng/μl Result Flagging Color:
rRNA Ratio [28s / 18s]: 1.4 Result Flagging Label: RIN: 8.40

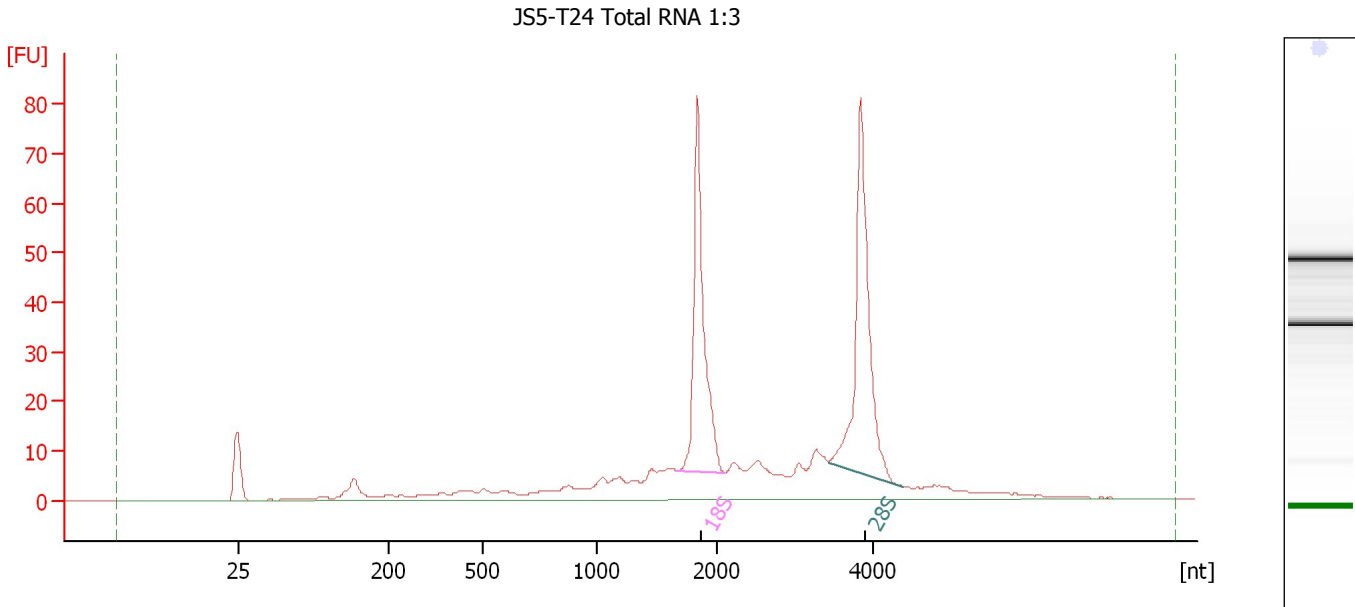
Fragment table for sample 2 : JS5-T2 Total RNA

Name	Start Size [nt]	End Size [nt]	Area	% of total Area
18S	1,690	2,113	96.3	19.0
28S	3,125	4,499	130.2	25.7

Assay Class: Eukaryote Total RNA Nano
 Data Path: C:\...ents and Settings\Bioanalyzer\2013-12-09\2013-12-09_005.xad

Created: 12/9/2013 1:48:43 PM
 Modified: 12/9/2013 2:19:32 PM

Electropherogram Summary Continued ...



Overall Results for sample 3 : JS5-T24 Total RNA 1:3

RNA Area:	421.7	RNA Integrity Number (RIN):	8.3 (B.02.08)
RNA Concentration:	230 ng/μl	Result Flagging Color:	
rRNA Ratio [28s / 18s]:	1.1	Result Flagging Label:	RIN: 8.30

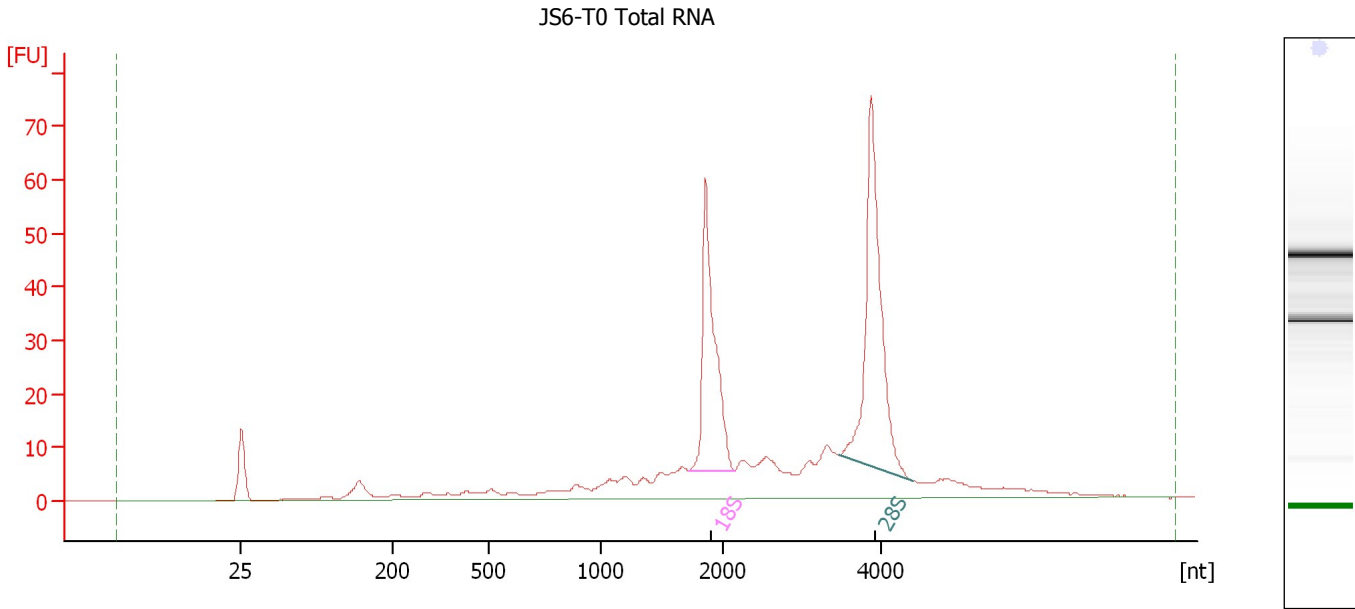
Fragment table for sample 3 : JS5-T24 Total RNA 1:3

Name	Start Size [nt]	End Size [nt]	Area	% of total Area
18S	1,664	2,093	84.2	20.0
28S	3,422	4,382	95.2	22.6

Assay Class: Eukaryote Total RNA Nano
Data Path: C:\...ents and Settings\Bioanalyzer\2013-12-09\2013-12-09_005.xad

Created: 12/9/2013 1:48:43 PM
Modified: 12/9/2013 2:19:32 PM

Electropherogram Summary Continued ...



Overall Results for sample 4 : JS6-T0 Total RNA

RNA Area: 408.4 RNA Integrity Number (RIN): 8.5 (B.02.08)
RNA Concentration: 222 ng/μl Result Flagging Color:
rRNA Ratio [28s / 18s]: 1.4 Result Flagging Label: RIN: 8.50

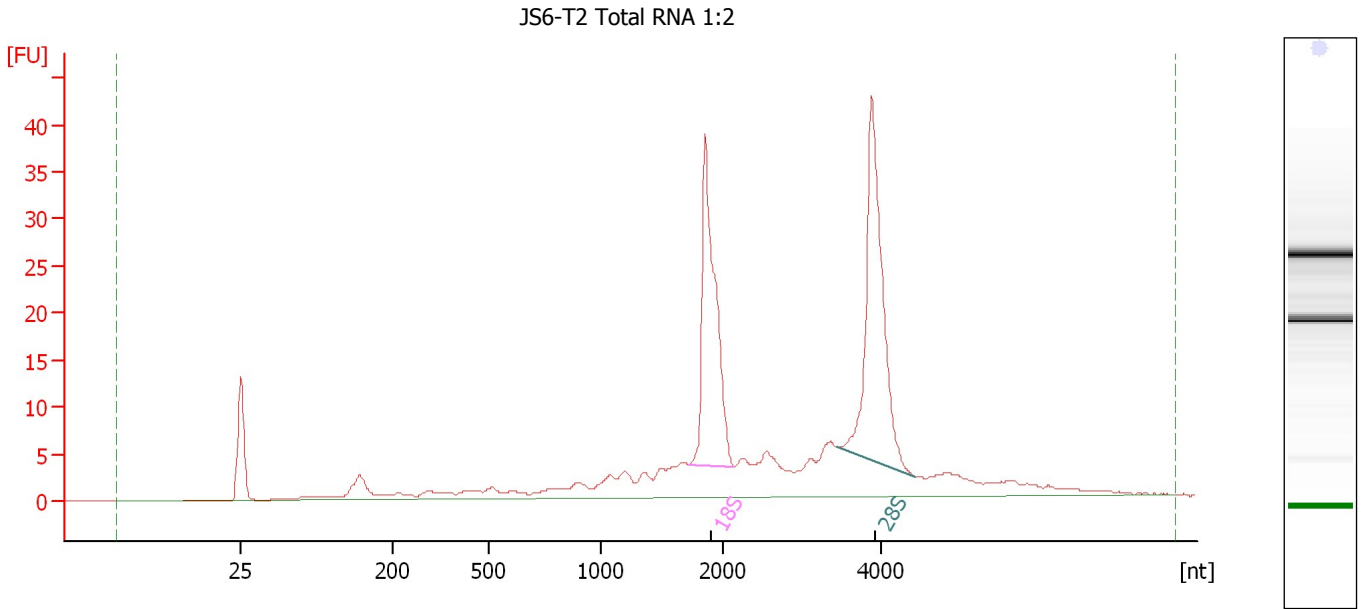
Fragment table for sample 4 : JS6-T0 Total RNA

Name	Start Size [nt]	End Size [nt]	Area	% of total Area
18S	1,721	2,138	72.2	17.7
28S	3,473	4,413	100.3	24.6

Assay Class: Eukaryote Total RNA Nano
Data Path: C:\...ents and Settings\Bioanalyzer\2013-12-09\2013-12-09_005.xad

Created: 12/9/2013 1:48:43 PM
Modified: 12/9/2013 2:19:32 PM

Electropherogram Summary Continued ...



Overall Results for sample 5 : JS6-T2 Total RNA 1:2

RNA Area: 268.3 RNA Integrity Number (RIN): 8.5 (B.02.08)
RNA Concentration: 146 ng/μl Result Flagging Color:
rRNA Ratio [28s / 18s]: 1.2 Result Flagging Label: RIN: 8.50

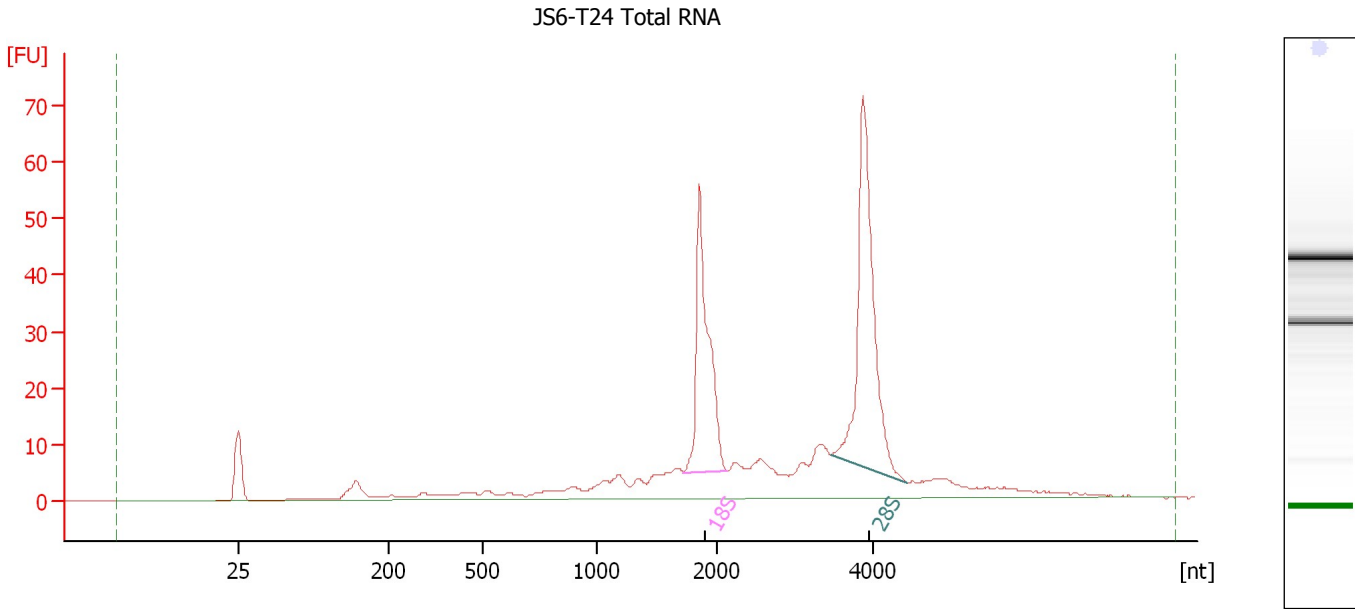
Fragment table for sample 5 : JS6-T2 Total RNA 1:2

Name	Start Size [nt]	End Size [nt]	Area	% of total Area
18S	1,713	2,124	52.2	19.5
28S	3,446	4,440	61.6	23.0

Assay Class: Eukaryote Total RNA Nano
 Data Path: C:\...ents and Settings\Bioanalyzer\2013-12-09\2013-12-09_005.xad

Created: 12/9/2013 1:48:43 PM
 Modified: 12/9/2013 2:19:32 PM

Electropherogram Summary Continued ...



Overall Results for sample 6 : JS6-T24 Total RNA

RNA Area:	389.5	RNA Integrity Number (RIN):	8.6 (B.02.08)
RNA Concentration:	212 ng/μl	Result Flagging Color:	
rRNA Ratio [28s / 18s]:	1.4	Result Flagging Label:	RIN: 8.60

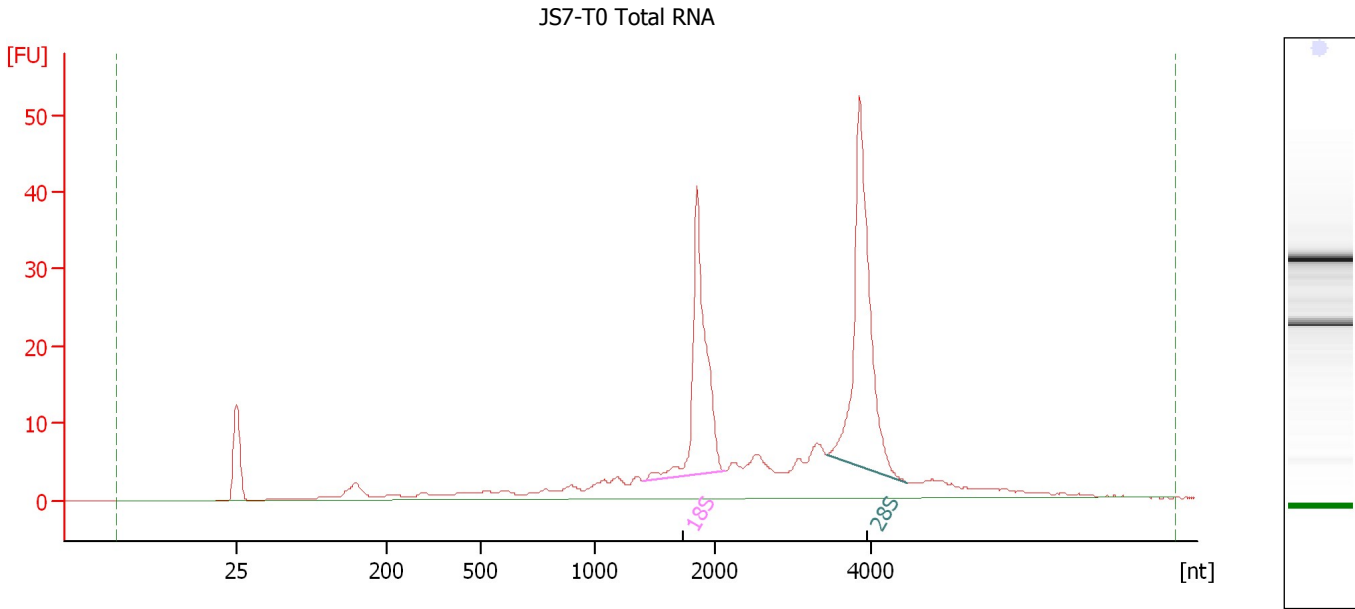
Fragment table for sample 6 : JS6-T24 Total RNA

Name	Start Size [nt]	End Size [nt]	Area	% of total Area
18S	1,717	2,120	69.5	17.9
28S	3,463	4,437	97.1	24.9

Assay Class: Eukaryote Total RNA Nano
Data Path: C:\...ents and Settings\Bioanalyzer\2013-12-09\2013-12-09_005.xad

Created: 12/9/2013 1:48:43 PM
Modified: 12/9/2013 2:19:32 PM

Electropherogram Summary Continued ...



Overall Results for sample 7 : JS7-T0 Total RNA

RNA Area: 284.1 RNA Integrity Number (RIN): 9 (B.02.08)
RNA Concentration: 155 ng/μl Result Flagging Color:
rRNA Ratio [28s / 18s]: 1.3 Result Flagging Label: RIN:9

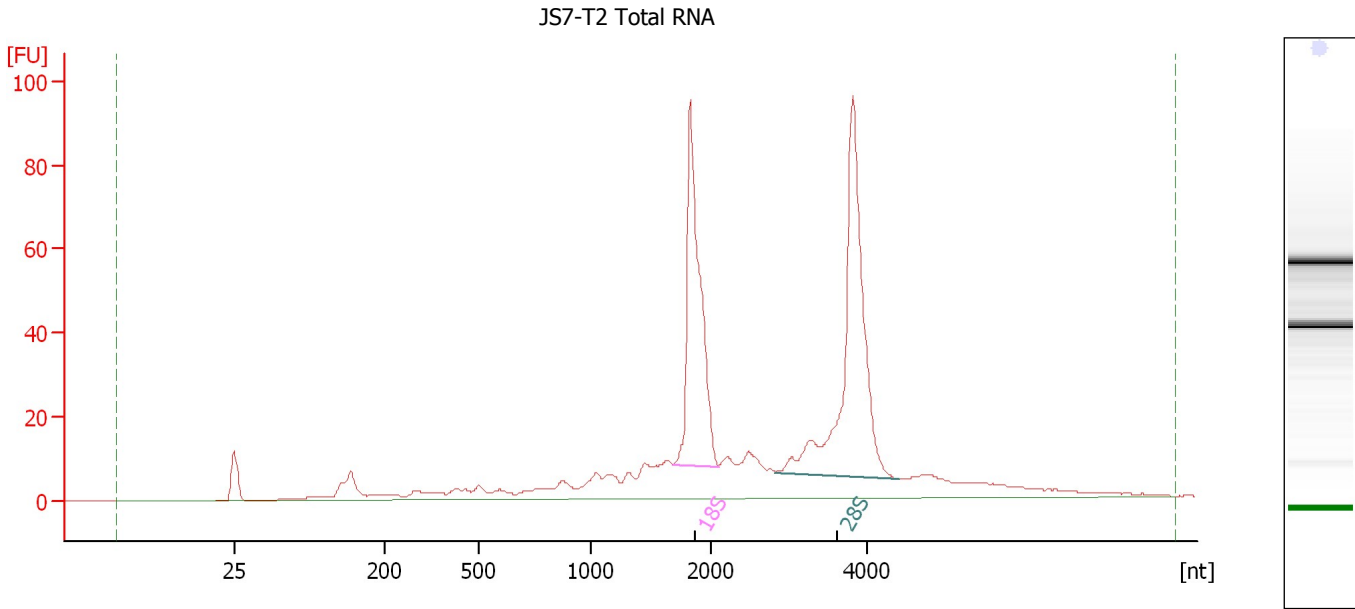
Fragment table for sample 7 : JS7-T0 Total RNA

Name	Start Size [nt]	End Size [nt]	Area	% of total Area
18S	1,407	2,119	54.3	19.1
28S	3,424	4,454	72.2	25.4

Assay Class: Eukaryote Total RNA Nano
Data Path: C:\...ents and Settings\Bioanalyzer\2013-12-09\2013-12-09_005.xad

Created: 12/9/2013 1:48:43 PM
Modified: 12/9/2013 2:19:32 PM

Electropherogram Summary Continued ...



Overall Results for sample 8 : JS7-T2 Total RNA

RNA Area: 620.1 RNA Integrity Number (RIN): 8.6 (B.02.08)
RNA Concentration: 338 ng/μl Result Flagging Color:
rRNA Ratio [28s / 18s]: 1.4 Result Flagging Label: RIN: 8.60

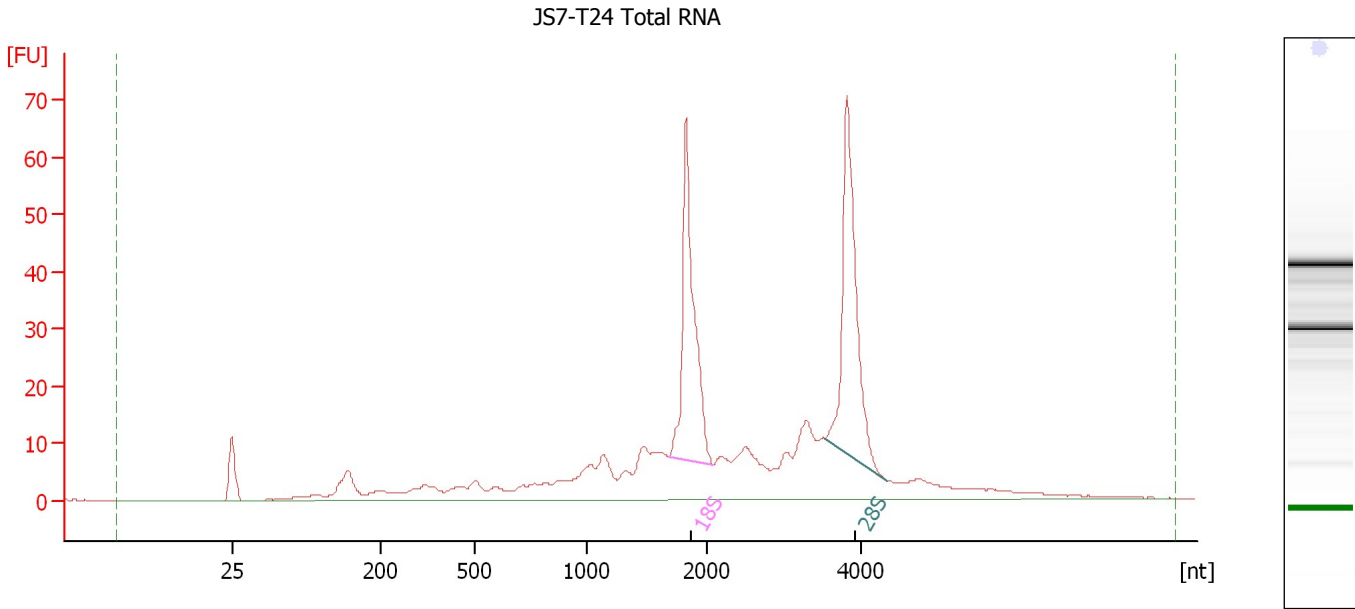
Fragment table for sample 8 : JS7-T2 Total RNA

Name	Start Size [nt]	End Size [nt]	Area	% of total Area
18S	1,686	2,089	125.2	20.2
28S	2,820	4,419	170.2	27.4

Assay Class: Eukaryote Total RNA Nano
 Data Path: C:\...ents and Settings\Bioanalyzer\2013-12-09\2013-12-09_005.xad

Created: 12/9/2013 1:48:43 PM
 Modified: 12/9/2013 2:19:32 PM

Electropherogram Summary Continued ...



Overall Results for sample 9 : JS7-T24 Total RNA

RNA Area:	476.7	RNA Integrity Number (RIN):	7.6 (B.02.08)
RNA Concentration:	260 ng/μl	Result Flagging Color:	
rRNA Ratio [28s / 18s]:	1.1	Result Flagging Label:	RIN: 7.60

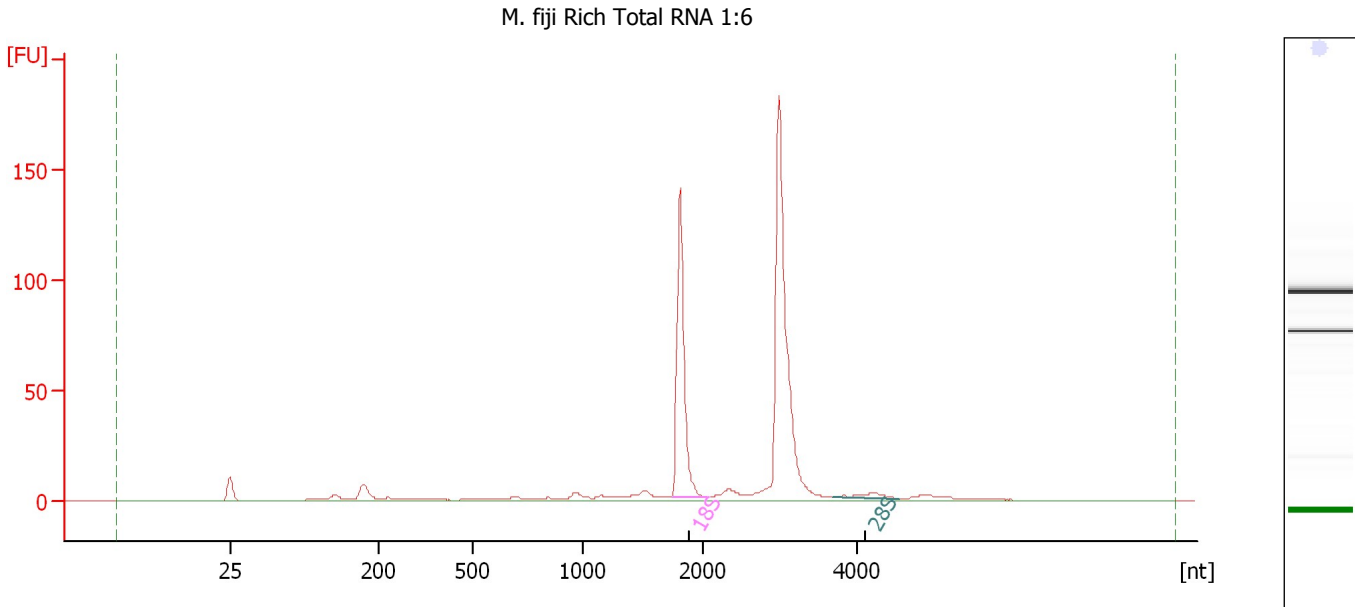
Fragment table for sample 9 : JS7-T24 Total RNA

Name	Start Size [nt]	End Size [nt]	Area	% of total Area
18S	1,674	2,073	78.5	16.5
28S	3,526	4,315	83.1	17.4

Assay Class: Eukaryote Total RNA Nano
 Data Path: C:\...ents and Settings\Bioanalyzer\2013-12-09\2013-12-09_005.xad

Created: 12/9/2013 1:48:43 PM
 Modified: 12/9/2013 2:19:32 PM

Electropherogram Summary Continued ...



Overall Results for sample 10 : M. fiji Rich Total RNA 1:6

RNA Area:	454.5	RNA Integrity Number (RIN):	7.6 (B.02.08, Anomaly Threshold(s) manually adapted)
RNA Concentration:	247 ng/μl	Result Flagging Color:	
rRNA Ratio [28s / 18s]:	0.0	Result Flagging Label:	RIN: 7.60

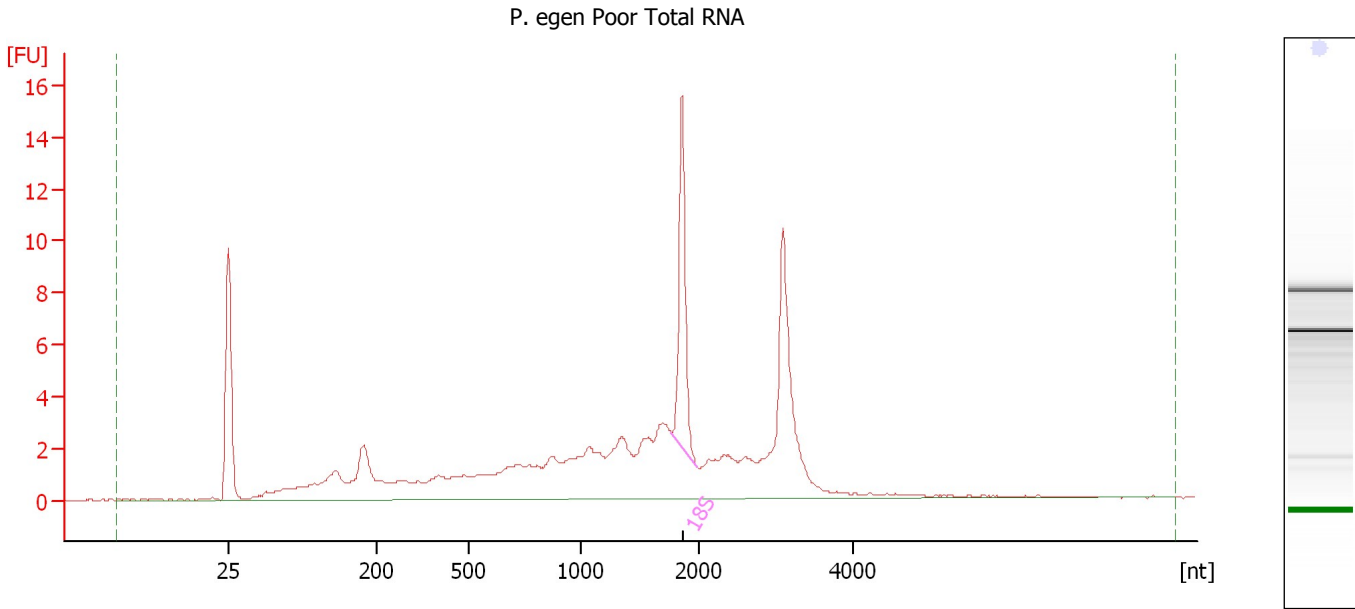
Fragment table for sample 10 : M. fiji Rich Total RNA 1:6

Name	Start Size [nt]	End Size [nt]	Area	% of total Area
18S	1,742	2,042	114.1	25.1
28S	3,682	4,544	5.3	1.2

Assay Class: Eukaryote Total RNA Nano
Data Path: C:\...ents and Settings\Bioanalyzer\2013-12-09\2013-12-09_005.xad

Created: 12/9/2013 1:48:43 PM
Modified: 12/9/2013 2:19:32 PM

Electropherogram Summary Continued ...



Overall Results for sample 11 : P. egen Poor Total RNA

RNA Area: 102.4 RNA Integrity Number (RIN): 5.3 (B.02.08)
RNA Concentration: 56 ng/μl Result Flagging Color:
rRNA Ratio [28s / 18s]: 0.0 Result Flagging Label: RIN: 5.30

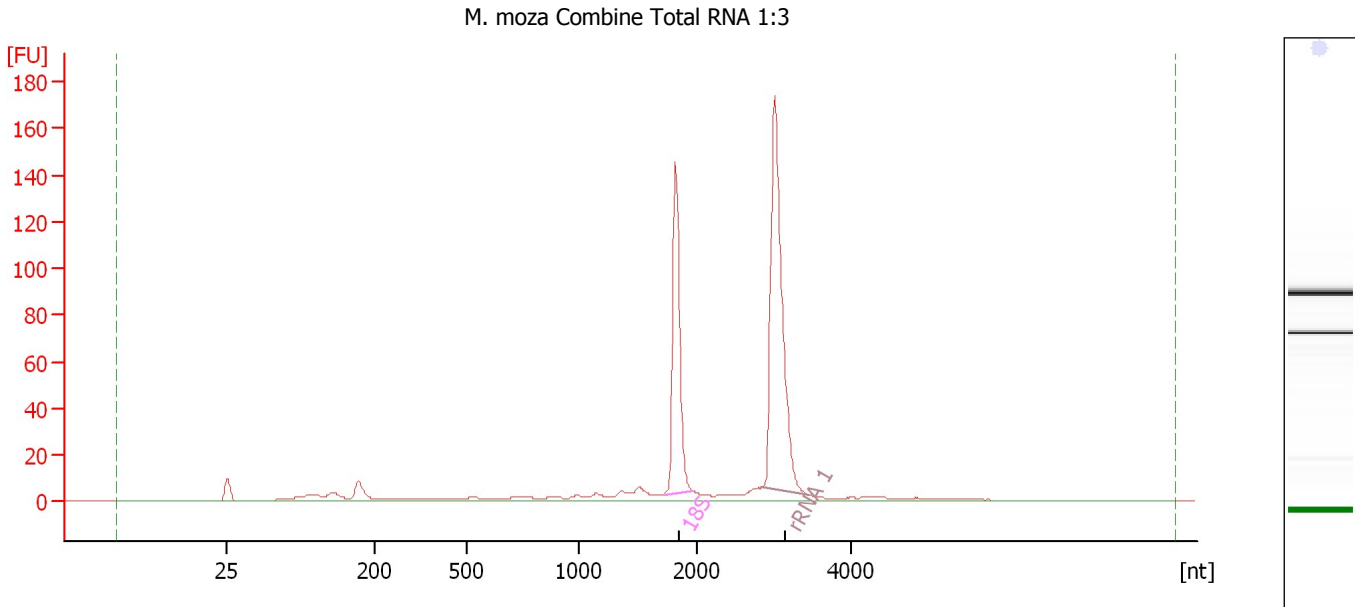
Fragment table for sample 11 : P. egen Poor Total RNA

Name	Start Size [nt]	End Size [nt]	Area	% of total Area
18S	1,766	1,980	10.4	10.1

Assay Class: Eukaryote Total RNA Nano
 Data Path: C:\...ents and Settings\Bioanalyzer\2013-12-09\2013-12-09_005.xad

Created: 12/9/2013 1:48:43 PM
 Modified: 12/9/2013 2:19:32 PM

Electropherogram Summary Continued ...



Overall Results for sample 12 : M. moza Combine Total RNA 1:3

RNA Area:	480.1	RNA Integrity Number (RIN):	6.6 (B.02.08, Anomaly Threshold(s) manually adapted)
RNA Concentration:	261 ng/μl	Result Flagging Color:	
rRNA Ratio [28s / 18s]:	0.0	Result Flagging Label:	RIN: 6.60

Fragment table for sample 12 : M. moza Combine Total RNA 1:3

Name	Start Size [nt]	End Size [nt]	Area	% of total Area
18S	1,719	1,967	111.6	23.2
rRNA 1	2,841	3,466	202.0	42.1

Assay Class: Eukaryote Total RNA Nano
Data Path: C:\...ents and Settings\Bioanalyzer\2013-12-09\2013-12-09_005.xad

Created: 12/9/2013 1:48:43 PM
Modified: 12/9/2013 2:19:32 PM

Gel Image

