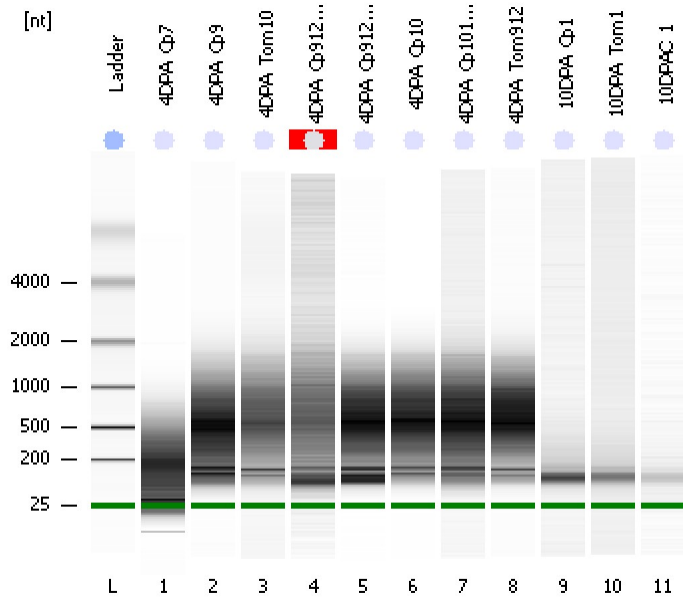


Assay Class: Eukaryote Total RNA Pico
Data Path: C:\...ents and Settings\Bioanalyzer\2013-12-10\2013-12-10_006.xad

Created: 12/10/2013 2:32:01 PM
Modified: 12/10/2013 2:54:57 PM

Electrophoresis File Run Summary



Instrument Information:

Instrument Name: DE13701086 Firmware: C.01.069
Serial#: DE13701086 Type: G2938B

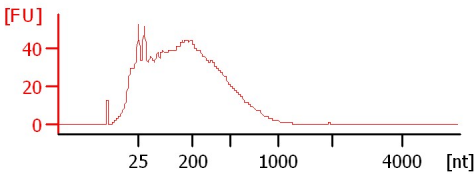
Assay Information:

Assay Origin Path: C:\Program Files\Agilent\2100 bioanalyzer\2100 expert\assays\RNA\Eukaryote Total RNA Pico Series II.xsy
Assay Class: Eukaryote Total RNA Pico
Version: 2.6
Assay Comments: Total RNA Analysis pg sensitivity (Eukaryote)
© Copyright 2003 - 2009 Agilent Technologies, Inc.

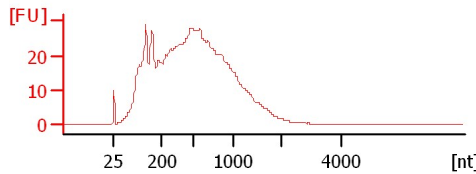
Chip Information:

Chip Lot #: Reagent Kit Lot #: Chip Comments:

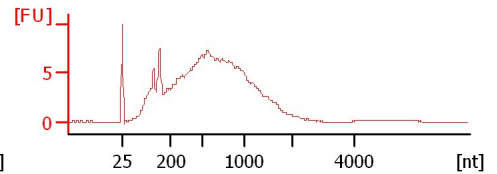
4DPA_Cp7
RIN: 2.40



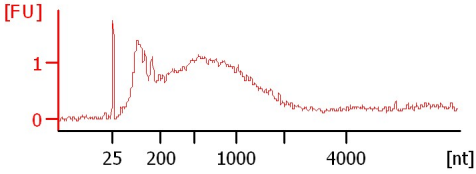
4DPA_Cp9
RIN: 1.80



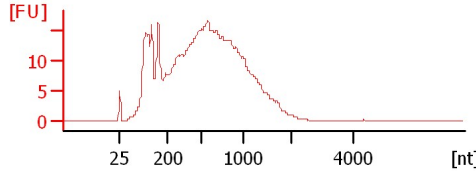
4DPA_Tom10
RIN: 2.10



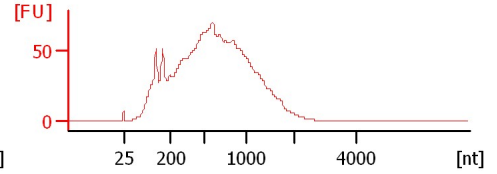
4DPA_Cp912early
RIN N/A



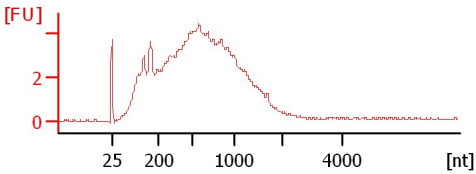
4DPA_Cp912late
RIN: 1.70



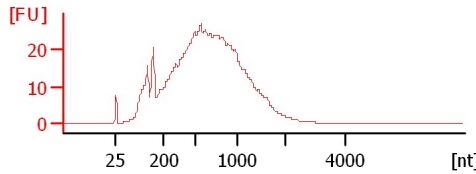
4DPA_Cp10
RIN: 1.50



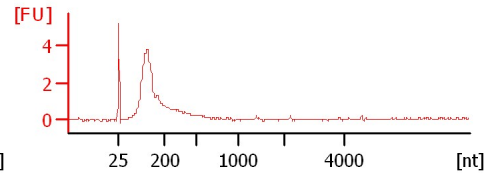
4DPA_Cp101early
RIN: 1.90



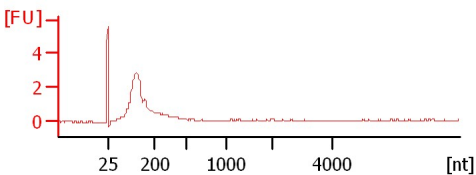
4DPA_Tom912
RIN: 1.70



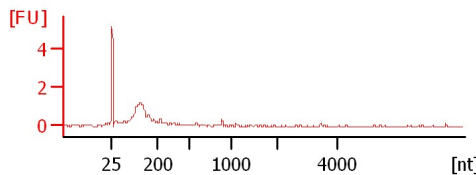
10DPA_Cp1
RIN: 2.50



10DPA_Tom1
RIN: 2.50



10DPAC_1
RIN: 2.10



Assay Class: Eukaryote Total RNA Pico
 Data Path: C:\...ents and Settings\Bioanalyzer\2013-12-10\2013-12-10_006.xad

Created: 12/10/2013 2:32:01 PM
 Modified: 12/10/2013 2:54:57 PM

Electrophoresis File Run Summary (Chip Summary)

Sample Name	Sample Comment	Status	Result Label	Result Color
4DPA_Cp7		✓	RIN: 2.40	
4DPA_Cp9		✓	RIN: 1.80	
4DPA_Tom10		✓	RIN: 2.10	
4DPA_Cp912early		✓	RIN N/A	
4DPA_Cp912late		✓	RIN: 1.70	
4DPA_Cp10		✓	RIN: 1.50	
4DPA_Cp101early		✓	RIN: 1.90	
4DPA_Tom912		✓	RIN: 1.70	
10DPA_Cp1		✓	RIN: 2.50	
10DPA_Tom1		✓	RIN: 2.50	
10DPAC_1		✓	RIN: 2.10	
Ladder		✓	All Other Samples	

Chip Lot #

Reagent Kit Lot #

Chip Comments :

Assay Class: Eukaryote Total RNA Pico
Data Path: C:\...ents and Settings\Bioanalyzer\2013-12-10\2013-12-10_006.xad

Created: 12/10/2013 2:32:01 PM
Modified: 12/10/2013 2:54:57 PM

Electrophoresis Assay Details

General Analysis Settings

Number of Available Sample and Ladder Wells (Max.) : 12
Minimum Visible Range [s] : 17
Maximum Visible Range [s] : 70
Start Analysis Time Range [s] : 18
End Analysis Time Range [s] : 69
Ladder Concentration [pg/ μ l] : 1000
Lower Marker Concentration [pg/ μ l] : 0
Upper Marker Concentration [pg/ μ l] : 0
Used Lower Marker for Quantitation
Standard Curve Fit is Logarithmic
Show Data Aligned to Lower Marker

Integrator Settings

Integration Start Time [s] : 18
Integration End Time [s] : 69
Slope Threshold : 0.6
Height Threshold [FU] : 0.5
Area Threshold : 0.2
Width Threshold [s] : 0.3
Baseline Plateau [s] : 6

Filter Settings

Filter Width [s] : 0.5
Polynomial Order : 4

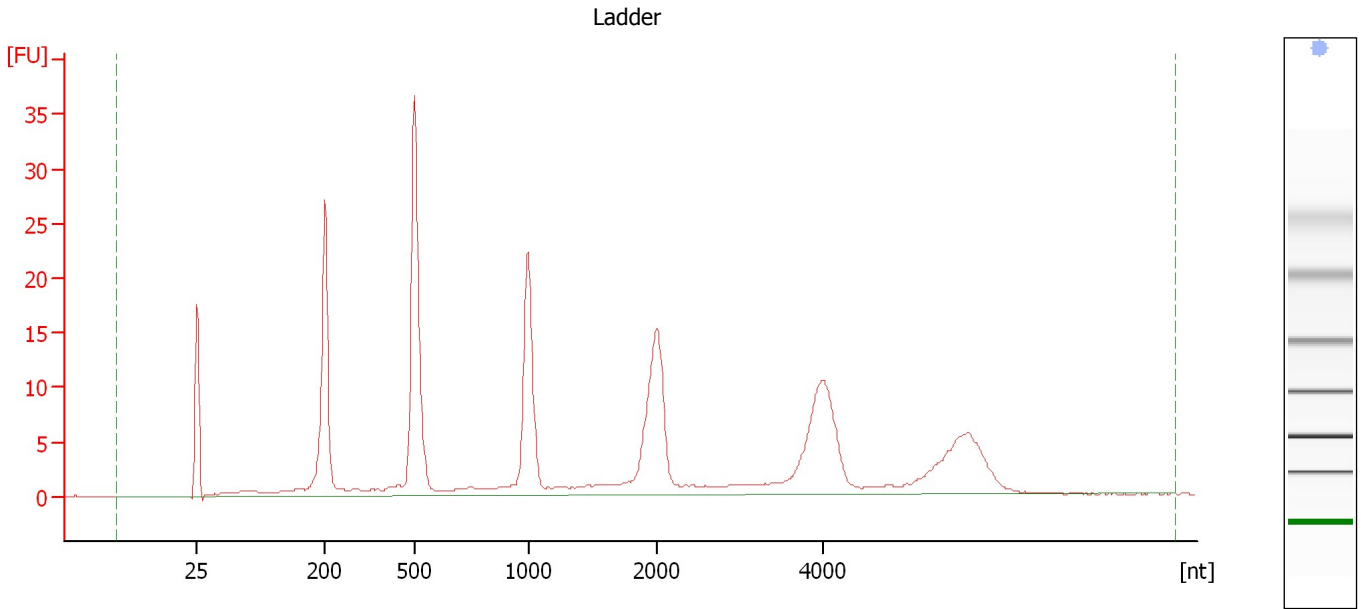
Ladder

Ladder Peak	Size
1	25
2	200
3	500
4	1000
5	2000
6	4000

Assay Class: Eukaryote Total RNA Pico
Data Path: C:\...ents and Settings\Bioanalyzer\2013-12-10\2013-12-10_006.xad

Created: 12/10/2013 2:32:01 PM
Modified: 12/10/2013 2:54:57 PM

Electropherogram Summary



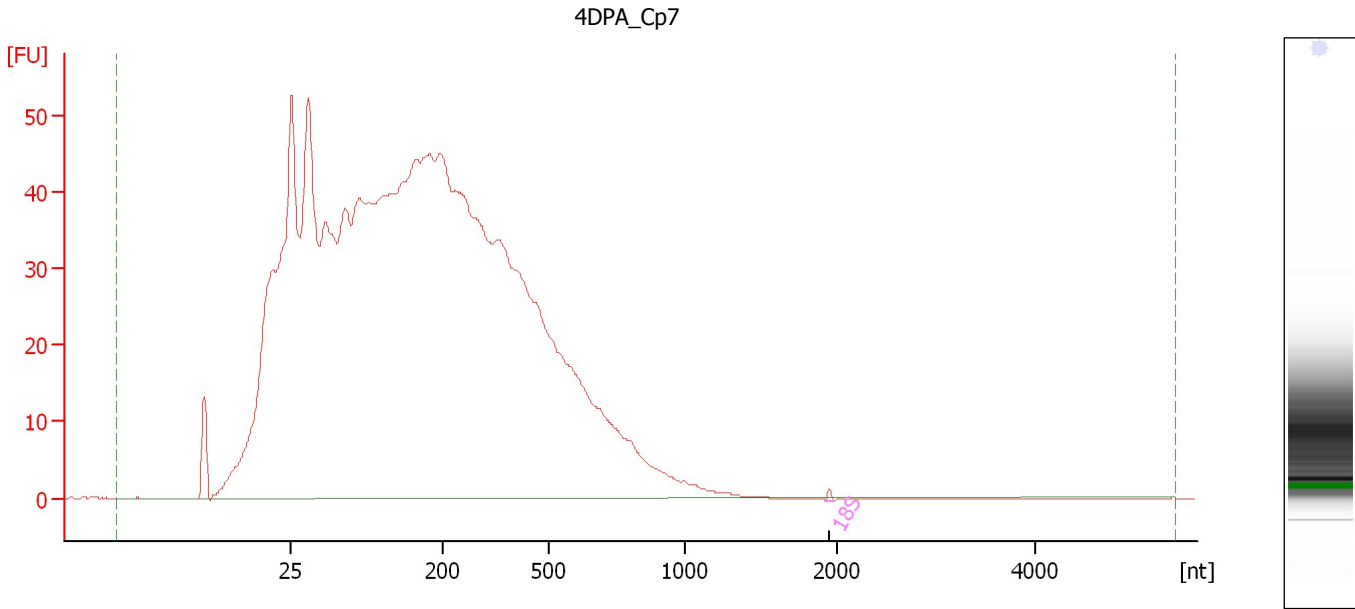
Overall Results for Ladder

RNA Area:	235.2	Result Flagging Color:	
RNA Concentration:	1,000 pg/μl	Result Flagging Label:	All Other Samples

Assay Class: Eukaryote Total RNA Pico
Data Path: C:\...ents and Settings\Bioanalyzer\2013-12-10\2013-12-10_006.xad

Created: 12/10/2013 2:32:01 PM
Modified: 12/10/2013 2:54:57 PM

Electropherogram Summary Continued ...



Overall Results for sample 1 : 4DPA_Cp7

RNA Area:	1,461.8	RNA Integrity Number (RIN):	2.4 (B.02.08)
RNA Concentration:	6,216 pg/μl	Result Flagging Color:	
rRNA Ratio [28s / 18s]:	0.0	Result Flagging Label:	RIN: 2.40

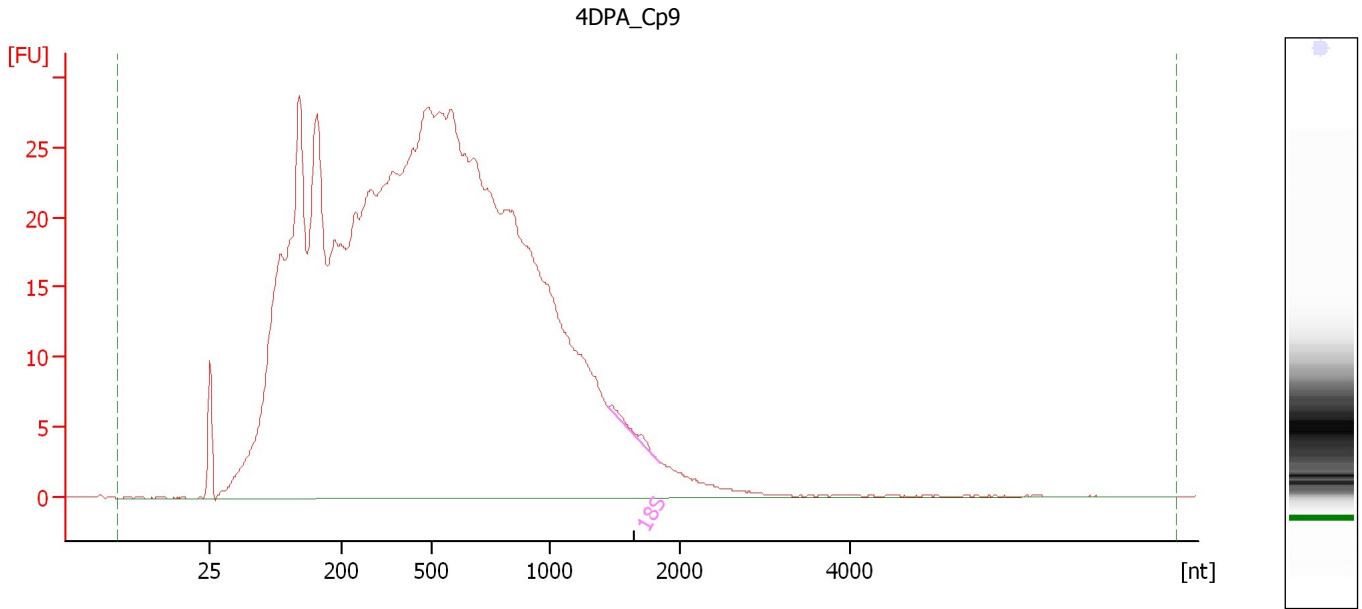
Fragment table for sample 1 : 4DPA_Cp7

Name	Start Size [nt]	End Size [nt]	Area	% of total Area
18S	1,920	1,976	0.7	0.0

Assay Class: Eukaryote Total RNA Pico
Data Path: C:\...ents and Settings\Bioanalyzer\2013-12-10\2013-12-10_006.xad

Created: 12/10/2013 2:32:01 PM
Modified: 12/10/2013 2:54:57 PM

Electropherogram Summary Continued ...



Overall Results for sample 2 : 4DPA_Cp9

RNA Area:	995.5	RNA Integrity Number (RIN):	1.8 (B.02.08)
RNA Concentration:	4,233 pg/μl	Result Flagging Color:	
rRNA Ratio [28s / 18s]:	0.0	Result Flagging Label:	RIN: 1.80

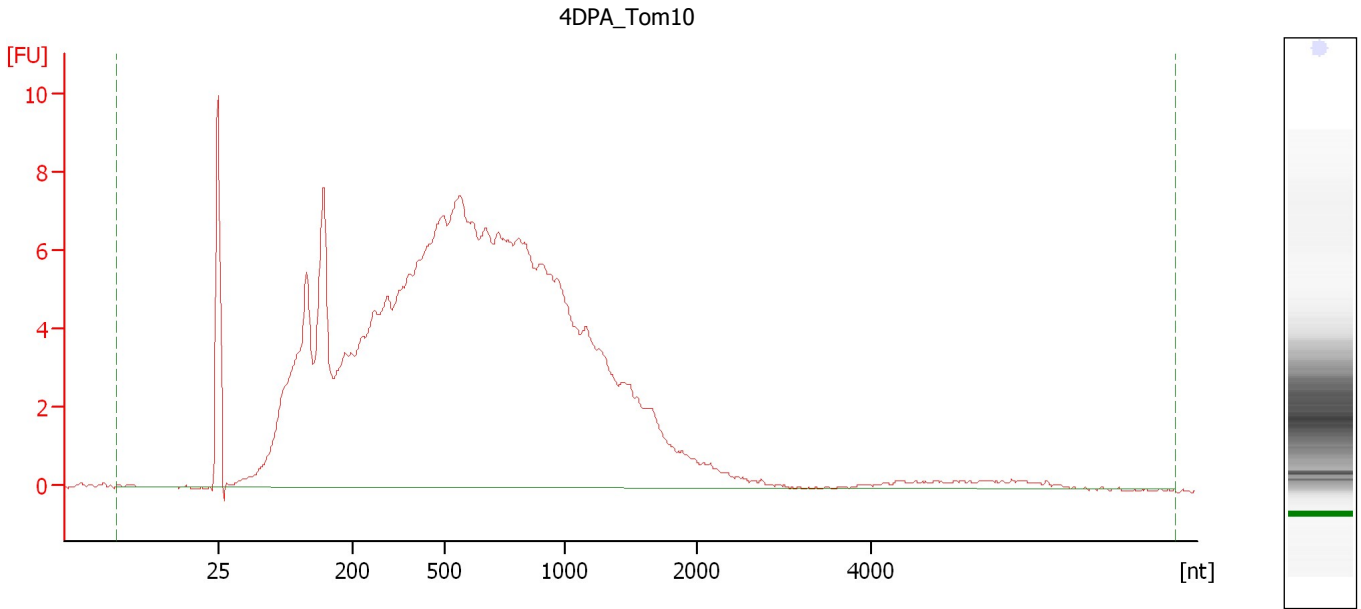
Fragment table for sample 2 : 4DPA_Cp9

Name	Start Size [nt]	End Size [nt]	Area	% of total Area
18S	1,453	1,843	1.5	0.2

Assay Class: Eukaryote Total RNA Pico
Data Path: C:\...ents and Settings\Bioanalyzer\2013-12-10\2013-12-10_006.xad

Created: 12/10/2013 2:32:01 PM
Modified: 12/10/2013 2:54:57 PM

Electropherogram Summary Continued ...



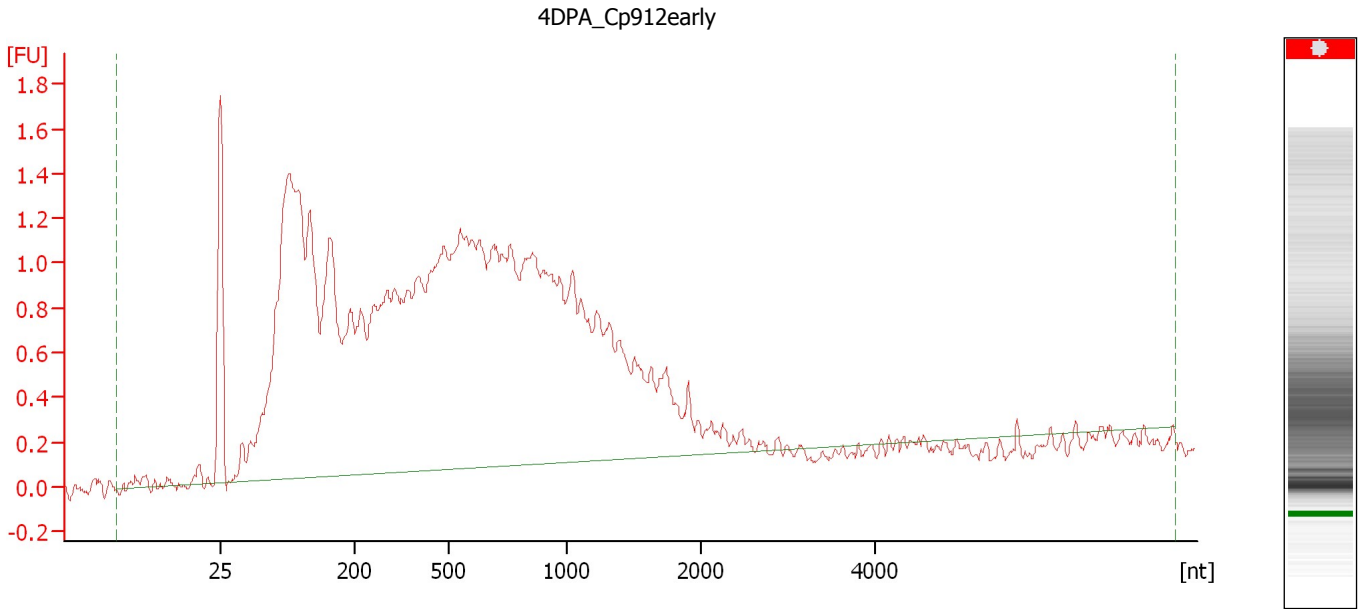
Overall Results for sample 3 : 4DPA Tom10

RNA Area:	251.9	RNA Integrity Number (RIN):	2.1 (B.02.08)
RNA Concentration:	1,071 pg/ μ l	Result Flagging Color:	
rRNA Ratio [28s / 18s]:	0.0	Result Flagging Label:	RIN: 2.10

Assay Class: Eukaryote Total RNA Pico
Data Path: C:\...ents and Settings\Bioanalyzer\2013-12-10\2013-12-10_006.xad

Created: 12/10/2013 2:32:01 PM
Modified: 12/10/2013 2:54:57 PM

Electropherogram Summary Continued ...



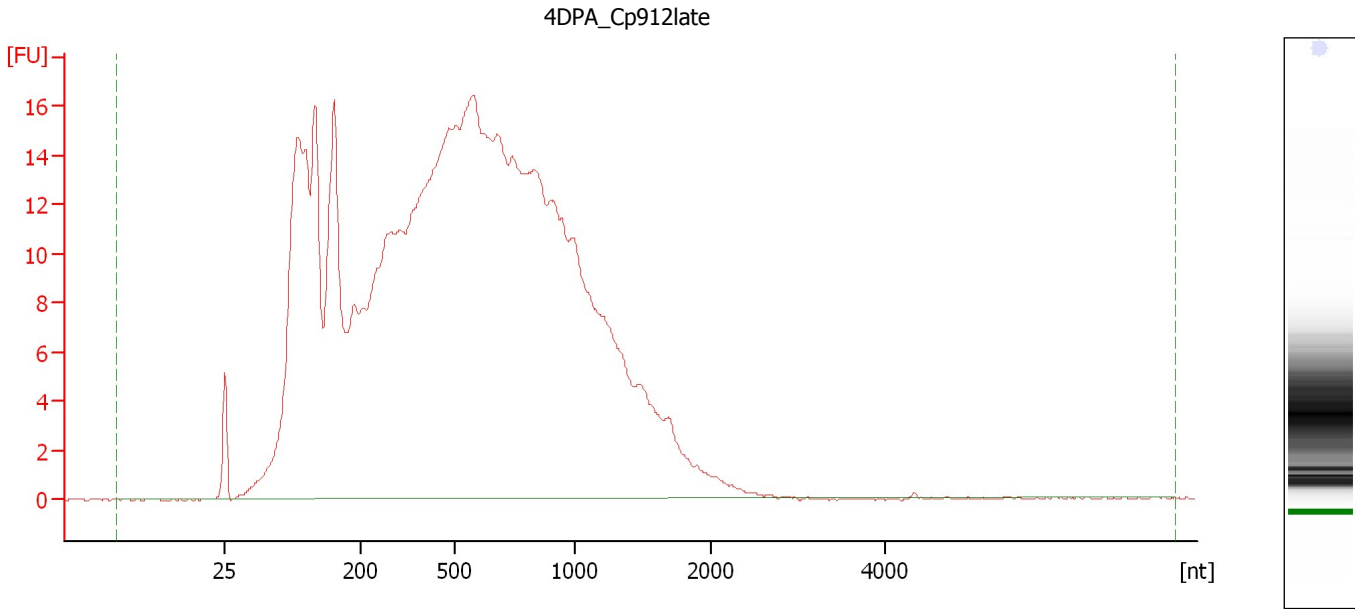
Overall Results for sample 4 : 4DPA_Cp912early

RNA Area:	46.1	RNA Integrity Number (RIN):	N/A (B.02.08)
RNA Concentration:	196 µg/µl	Result Flagging Color:	
rRNA Ratio [28s / 18s]:	0.0	Result Flagging Label:	RIN N/A

Assay Class: Eukaryote Total RNA Pico
Data Path: C:\...ents and Settings\Bioanalyzer\2013-12-10\2013-12-10_006.xad

Created: 12/10/2013 2:32:01 PM
Modified: 12/10/2013 2:54:57 PM

Electropherogram Summary Continued ...



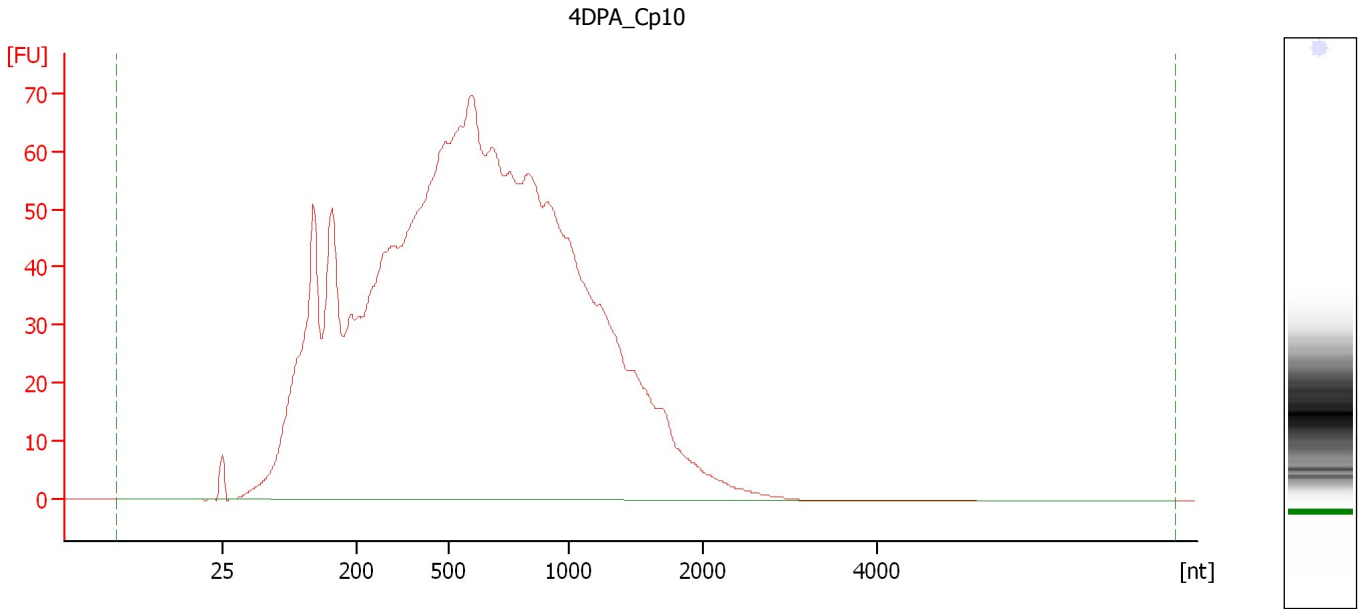
Overall Results for sample 5 : 4DPA_Cp912late

RNA Area:	568.7	RNA Integrity Number (RIN):	1.7 (B.02.08)
RNA Concentration:	2,419 pg/μl	Result Flagging Color:	
rRNA Ratio [28s / 18s]:	0.0	Result Flagging Label:	RIN: 1.70

Assay Class: Eukaryote Total RNA Pico
Data Path: C:\...ents and Settings\Bioanalyzer\2013-12-10\2013-12-10_006.xad

Created: 12/10/2013 2:32:01 PM
Modified: 12/10/2013 2:54:57 PM

Electropherogram Summary Continued ...



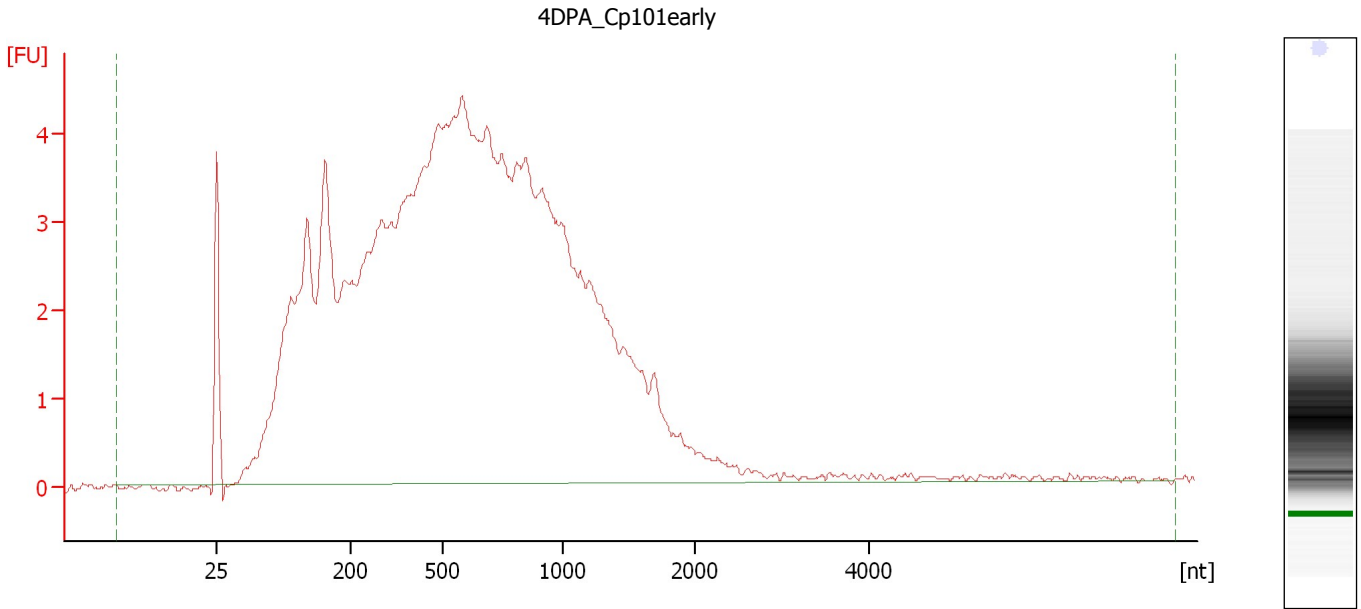
Overall Results for sample 6 : 4DPA_Cp10

RNA Area:	2,188.6	RNA Integrity Number (RIN):	1.5 (B.02.08)
RNA Concentration:	9,307 pg/μl	Result Flagging Color:	
rRNA Ratio [28s / 18s]:	0.0	Result Flagging Label:	RIN: 1.50

Assay Class: Eukaryote Total RNA Pico
Data Path: C:\...ents and Settings\Bioanalyzer\2013-12-10\2013-12-10_006.xad

Created: 12/10/2013 2:32:01 PM
Modified: 12/10/2013 2:54:57 PM

Electropherogram Summary Continued ...



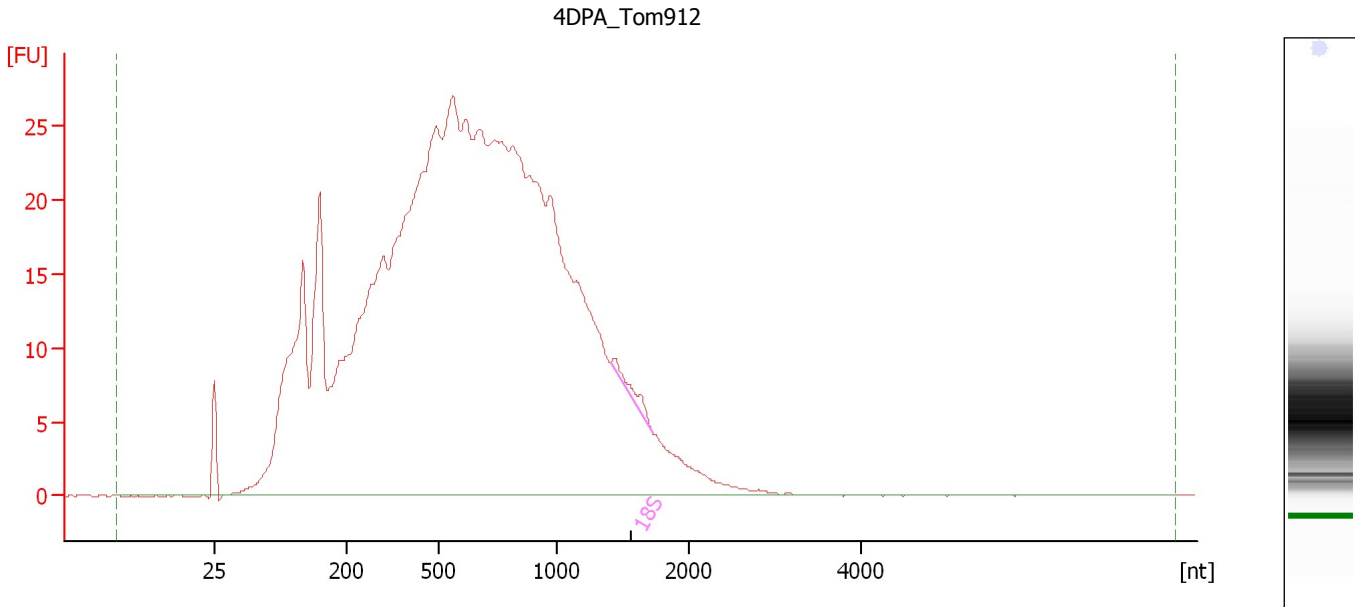
Overall Results for sample 7 : 4DPA_Cp101early

RNA Area:	151.1	RNA Integrity Number (RIN):	1.9 (B.02.08)
RNA Concentration:	642 pg/μl	Result Flagging Color:	
rRNA Ratio [28s / 18s]:	0.0	Result Flagging Label:	RIN: 1.90

Assay Class: Eukaryote Total RNA Pico
Data Path: C:\...ents and Settings\Bioanalyzer\2013-12-10\2013-12-10_006.xad

Created: 12/10/2013 2:32:01 PM
Modified: 12/10/2013 2:54:57 PM

Electropherogram Summary Continued ...



Overall Results for sample 8 : 4DPA Tom912

RNA Area:	827.4	RNA Integrity Number (RIN):	1.7 (B.02.08)
RNA Concentration:	3,519 µg/µl	Result Flagging Color:	
rRNA Ratio [28s / 18s]:	0.0	Result Flagging Label:	RIN: 1.70

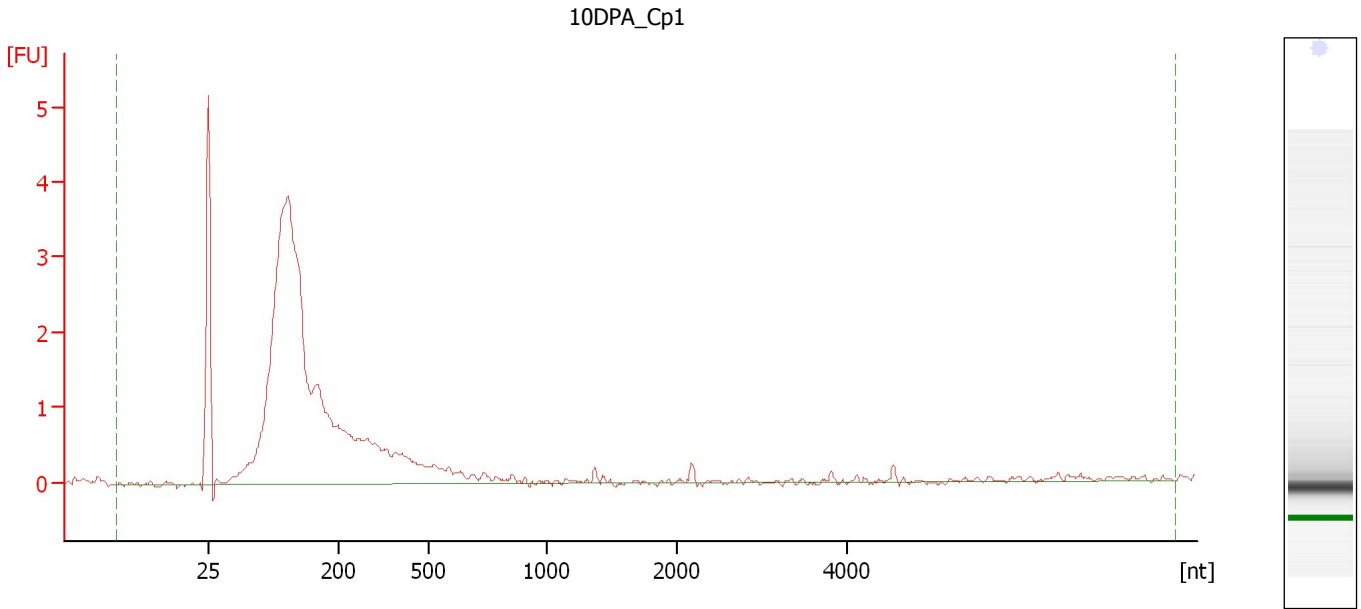
Fragment table for sample 8 : 4DPA Tom912

Name	Start Size [nt]	End Size [nt]	Area	% of total Area
18S	1,405	1,719	2.9	0.4

Assay Class: Eukaryote Total RNA Pico
Data Path: C:\...ents and Settings\Bioanalyzer\2013-12-10\2013-12-10_006.xad

Created: 12/10/2013 2:32:01 PM
Modified: 12/10/2013 2:54:57 PM

Electropherogram Summary Continued ...



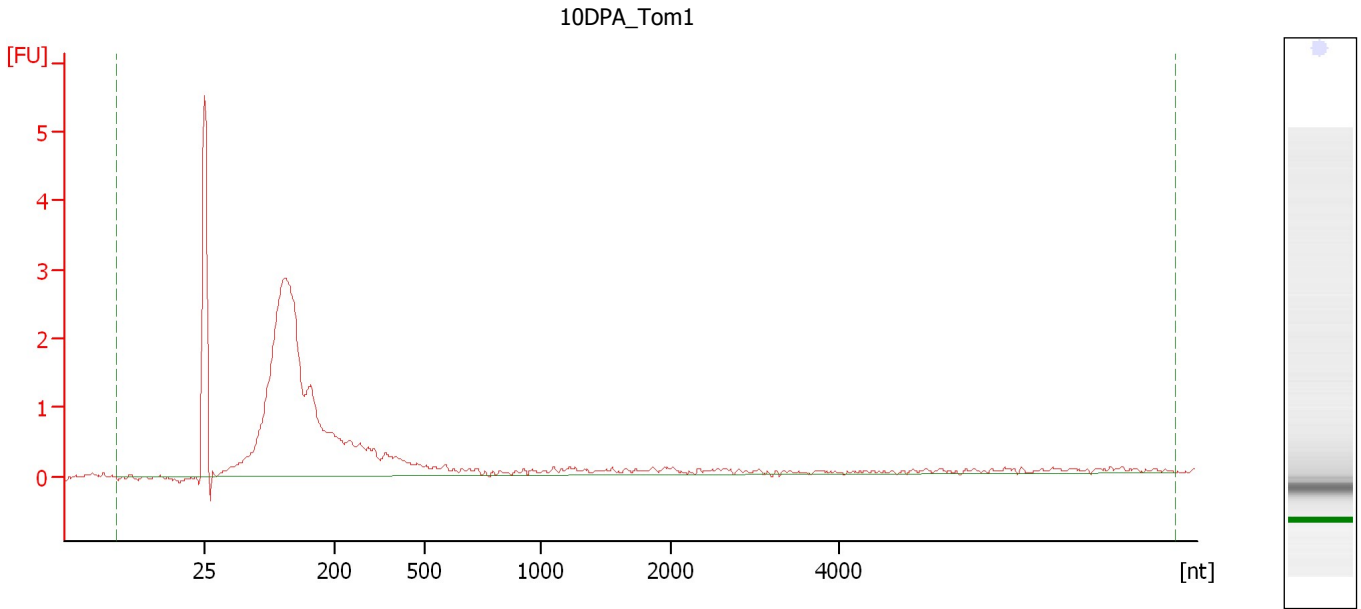
Overall Results for sample 9 : 10DPA_Cp1

RNA Area:	36.3	RNA Integrity Number (RIN):	2.5 (B.02.08)
RNA Concentration:	154 pg/μl	Result Flagging Color:	
rRNA Ratio [28s / 18s]:	0.0	Result Flagging Label:	RIN: 2.50

Assay Class: Eukaryote Total RNA Pico
Data Path: C:\...ents and Settings\Bioanalyzer\2013-12-10\2013-12-10_006.xad

Created: 12/10/2013 2:32:01 PM
Modified: 12/10/2013 2:54:57 PM

Electropherogram Summary Continued ...



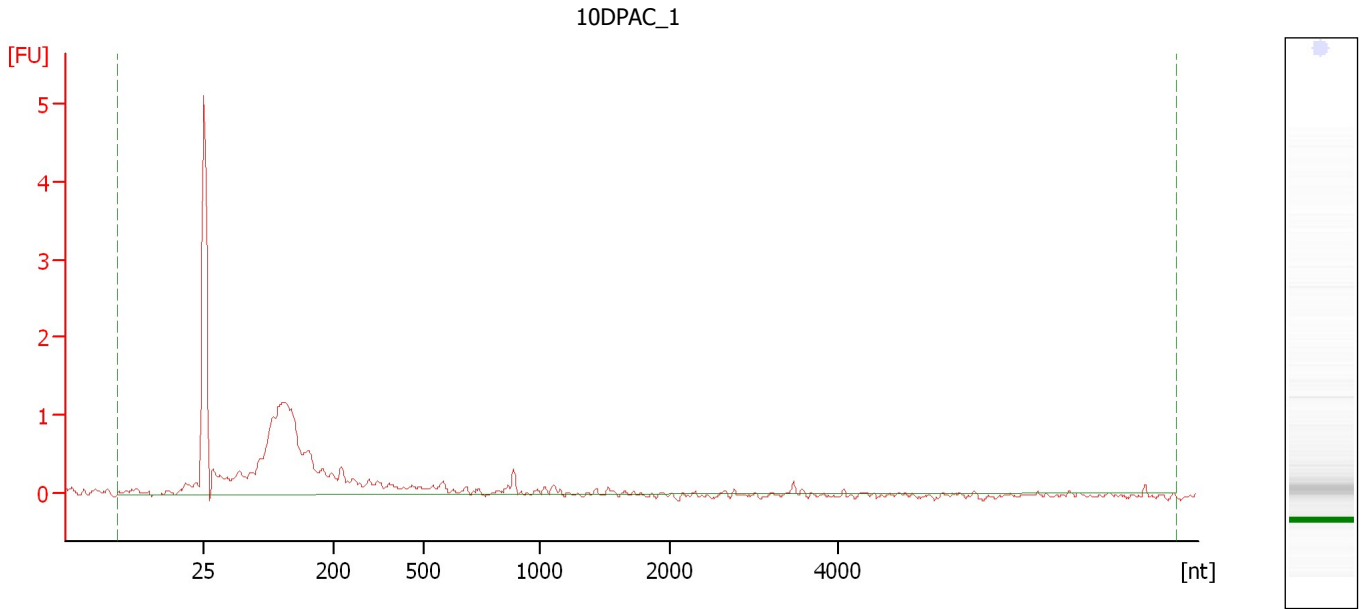
Overall Results for sample 10 : 10DPA Tom1

RNA Area:	28.8	RNA Integrity Number (RIN):	2.5 (B.02.08)
RNA Concentration:	123 pg/μl	Result Flagging Color:	
rRNA Ratio [28s / 18s]:	0.0	Result Flagging Label:	RIN: 2.50

Assay Class: Eukaryote Total RNA Pico
Data Path: C:\...ents and Settings\Bioanalyzer\2013-12-10\2013-12-10_006.xad

Created: 12/10/2013 2:32:01 PM
Modified: 12/10/2013 2:54:57 PM

Electropherogram Summary Continued ...



Overall Results for sample 11 : 10DPAC_1

RNA Area:	15.0	RNA Integrity Number (RIN):	2.1 (B.02.08)
RNA Concentration:	64 pg/μl	Result Flagging Color:	
rRNA Ratio [28s / 18s]:	0.0	Result Flagging Label:	RIN: 2.10

Assay Class: Eukaryote Total RNA Pico
Data Path: C:\...ents and Settings\Bioanalyzer\2013-12-10\2013-12-10_006.xad

Created: 12/10/2013 2:32:01 PM
Modified: 12/10/2013 2:54:57 PM

Gel Image

