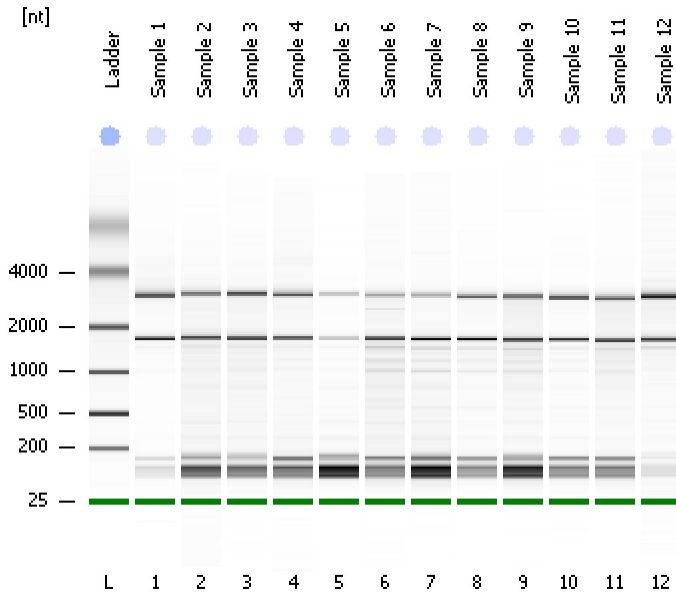


Assay Class: Eukaryote Total RNA Nano  
Data Path: C:\...ents and Settings\Bioanalyzer\2013-12-11\2013-12-11\_004.xad

Created: 12/11/2013 12:18:31 PM  
Modified: 12/11/2013 12:42:54 PM

Electrophoresis File Run Summary



Instrument Information:

Instrument Name: DE13701086      Firmware: C.01.069  
Serial#: DE13701086      Type: G2938B

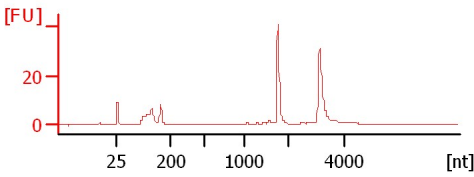
Assay Information:

Assay Origin Path: C:\Program Files\Agilent\2100 bioanalyzer\2100 expert\assays\RNA\Eukaryote Total RNA Nano Series II.xsy  
Assay Class: Eukaryote Total RNA Nano  
Version: 2.6  
Assay Comments: Total RNA Analysis ng sensitivity (Eukaryote)  
© Copyright 2003 - 2009 Agilent Technologies, Inc.

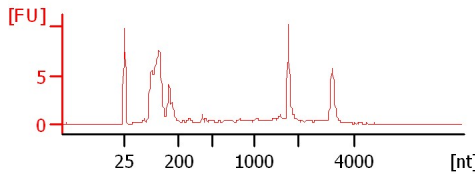
Chip Information:

Chip Lot #:   
Reagent Kit Lot #:   
Chip Comments:

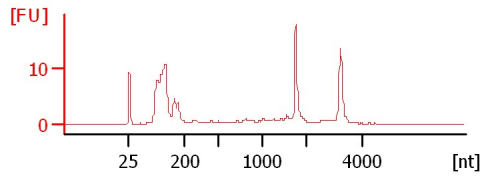
Sample 1  
RIN: 9.30



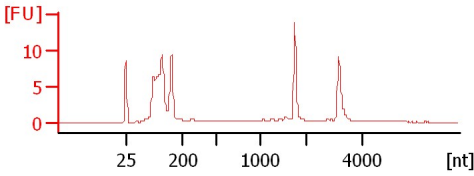
Sample 2  
RIN: 7.50



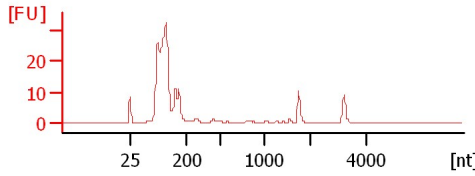
Sample 3  
RIN: 7.60



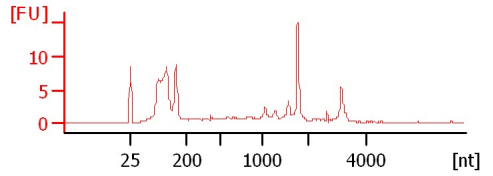
Sample 4  
RIN: 7.90



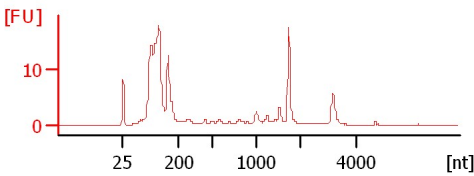
Sample 5  
RIN: 3.90



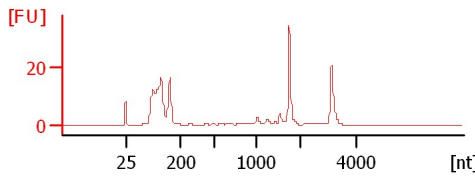
Sample 6  
RIN: 6.40



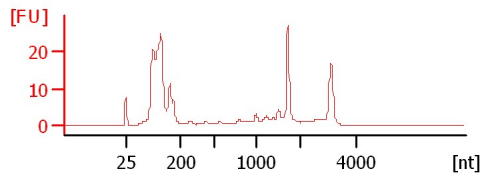
Sample 7  
RIN: 6.50



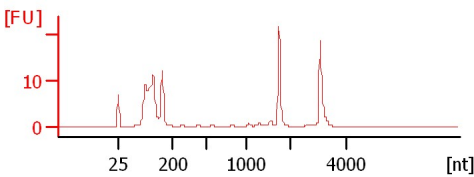
Sample 8  
RIN: 7.80



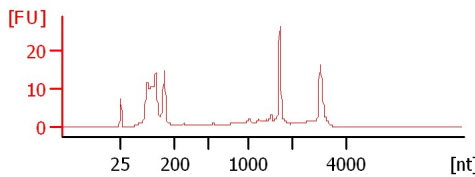
Sample 9  
RIN: 6.90



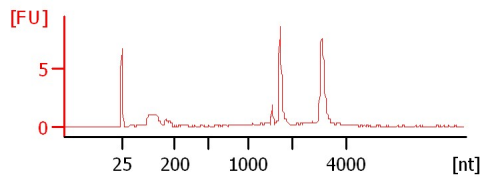
Sample 10  
RIN: 8.30



Sample 11  
RIN: 7.20



Sample 12  
RIN: 9



Assay Class: Eukaryote Total RNA Nano  
 Data Path: C:\...ents and Settings\Bioanalyzer\2013-12-11\2013-12-11\_004.xad

Created: 12/11/2013 12:18:31 PM  
 Modified: 12/11/2013 12:42:54 PM

**Electrophoresis File Run Summary (Chip Summary)**

Sample Name	Sample Comment	Status	Result Label	Result Color
Sample 1		✓	RIN: 9.30	
Sample 2		✓	RIN: 7.50	
Sample 3		✓	RIN: 7.60	
Sample 4		✓	RIN: 7.90	
Sample 5		✓	RIN: 3.90	
Sample 6		✓	RIN: 6.40	
Sample 7		✓	RIN: 6.50	
Sample 8		✓	RIN: 7.80	
Sample 9		✓	RIN: 6.90	
Sample 10		✓	RIN: 8.30	
Sample 11		✓	RIN: 7.20	
Sample 12		✓	RIN:9	
Ladder		✓	All Other Samples	

**Chip Lot #**

**Reagent Kit Lot #**

**Chip Comments :**

Assay Class: Eukaryote Total RNA Nano  
Data Path: C:\...ents and Settings\Bioanalyzer\2013-12-11\2013-12-11\_004.xad

Created: 12/11/2013 12:18:31 PM  
Modified: 12/11/2013 12:42:54 PM

## Electrophoresis Assay Details

### General Analysis Settings

Number of Available Sample and Ladder Wells (Max.) : 13  
Minimum Visible Range [s] : 17  
Maximum Visible Range [s] : 70  
Start Analysis Time Range [s] : 19  
End Analysis Time Range [s] : 69  
Ladder Concentration [ng/μl] : 150  
Lower Marker Concentration [ng/μl] : 0  
Upper Marker Concentration [ng/μl] : 0  
Used Lower Marker for Quantitation  
Standard Curve Fit is Logarithmic  
Show Data Aligned to Lower Marker

### Integrator Settings

Integration Start Time [s] : 19  
Integration End Time [s] : 69  
Slope Threshold : 0.6  
Height Threshold [FU] : 0.5  
Area Threshold : 0.2  
Width Threshold [s] : 0.5  
Baseline Plateau [s] : 6

### Filter Settings

Filter Width [s] : 0.5  
Polynomial Order : 4

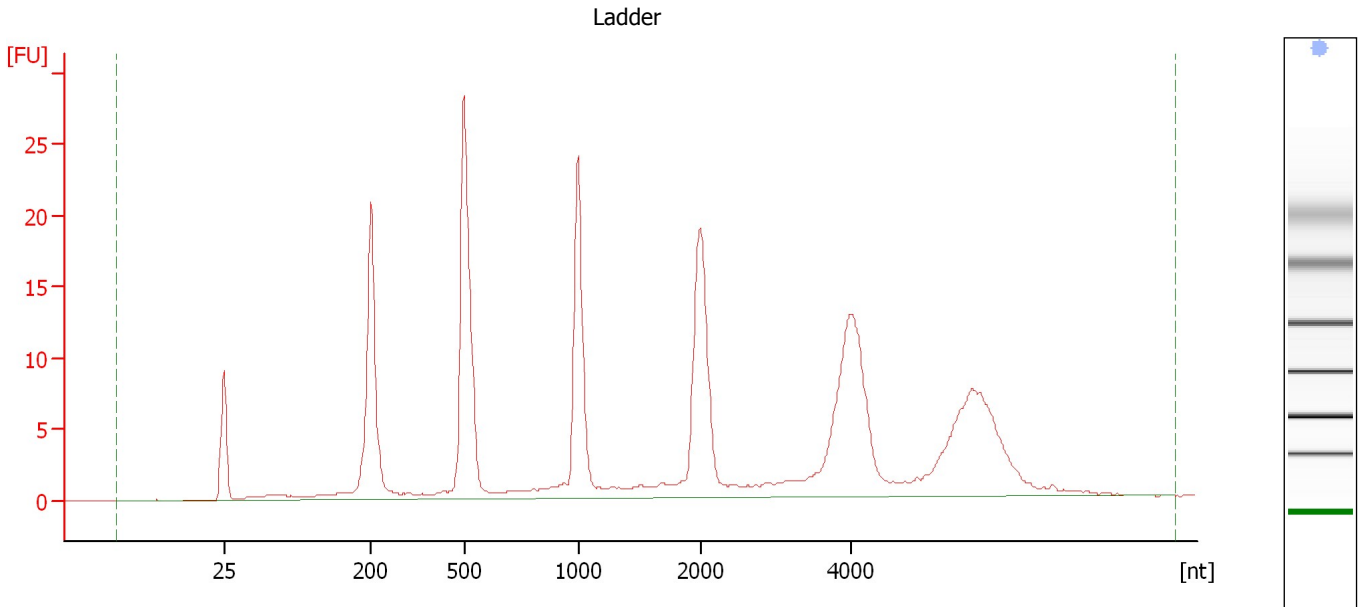
### Ladder

Ladder Peak	Size
1	25
2	200
3	500
4	1000
5	2000
6	4000

Assay Class: Eukaryote Total RNA Nano  
Data Path: C:\...ents and Settings\Bioanalyzer\2013-12-11\2013-12-11\_004.xad

Created: 12/11/2013 12:18:31 PM  
Modified: 12/11/2013 12:42:54 PM

**Electropherogram Summary**



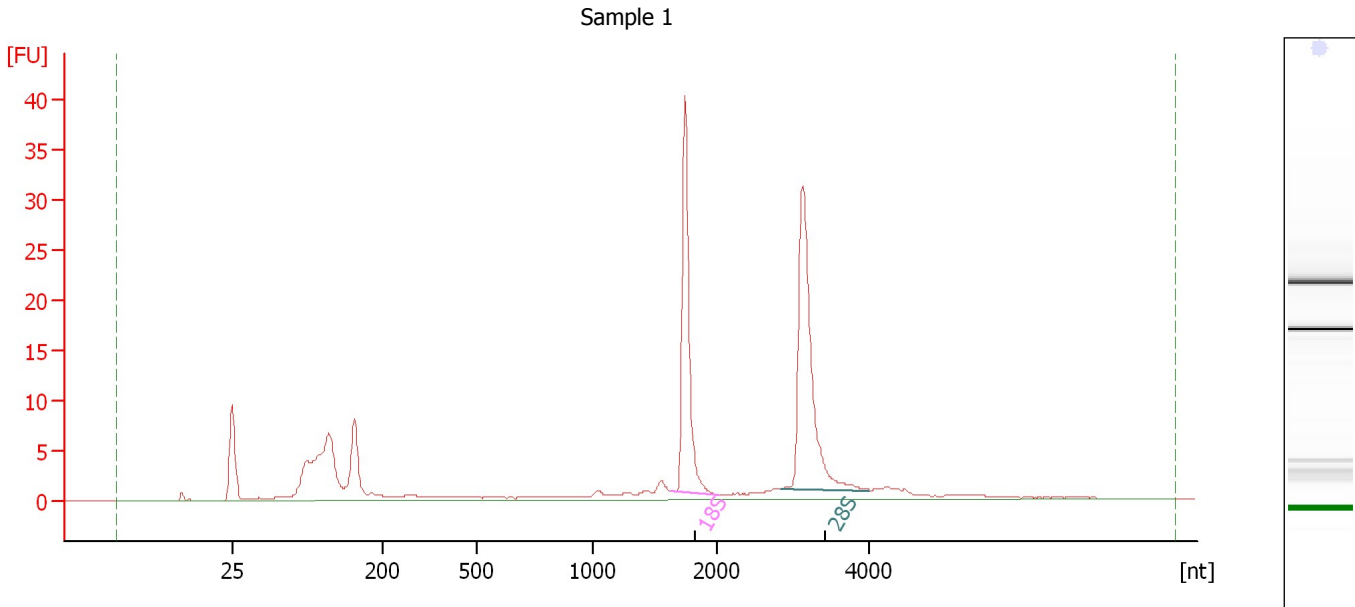
**Overall Results for Ladder**

RNA Area:	241.4	Result Flagging Color:	<span style="background-color: blue; border: 1px solid black; display: inline-block; width: 20px; height: 10px;"></span>
RNA Concentration:	150 ng/ $\mu$ l	Result Flagging Label:	All Other Samples

Assay Class: Eukaryote Total RNA Nano  
 Data Path: C:\...ents and Settings\Bioanalyzer\2013-12-11\2013-12-11\_004.xad

Created: 12/11/2013 12:18:31 PM  
 Modified: 12/11/2013 12:42:54 PM

**Electropherogram Summary Continued ...**



**Overall Results for sample 1 : Sample 1**

RNA Area:	155.8	RNA Integrity Number (RIN):	9.3 (B.02.08, Anomaly Threshold(s) manually adapted)
RNA Concentration:	97 ng/μl	Result Flagging Color:	<span style="background-color: #ccccff; border: 1px solid black; display: inline-block; width: 20px; height: 10px;"></span>
rRNA Ratio [28s / 18s]:	1.2	Result Flagging Label:	RIN: 9.30

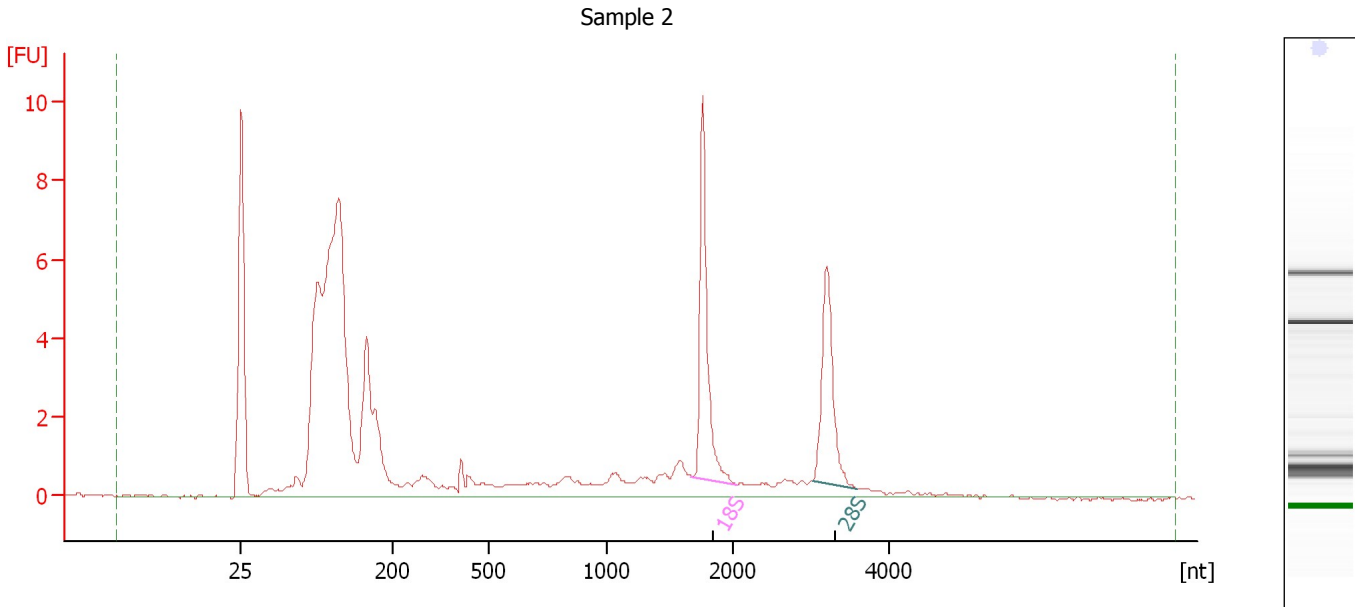
**Fragment table for sample 1 : Sample 1**

Name	Start Size [nt]	End Size [nt]	Area	% of total Area
18S	1,635	2,037	32.9	21.1
28S	2,833	3,991	39.5	25.4

Assay Class: Eukaryote Total RNA Nano  
 Data Path: C:\...ents and Settings\Bioanalyzer\2013-12-11\2013-12-11\_004.xad

Created: 12/11/2013 12:18:31 PM  
 Modified: 12/11/2013 12:42:54 PM

**Electropherogram Summary Continued ...**



**Overall Results for sample 2 : Sample 2**

RNA Area:	82.0	RNA Integrity Number (RIN):	7.5 (B.02.08, Anomaly Threshold(s) manually adapted)
RNA Concentration:	51 ng/μl	Result Flagging Color:	<span style="background-color: #ccccff; border: 1px solid black; display: inline-block; width: 20px; height: 10px;"></span>
rRNA Ratio [28s / 18s]:	0.8	Result Flagging Label:	RIN: 7.50

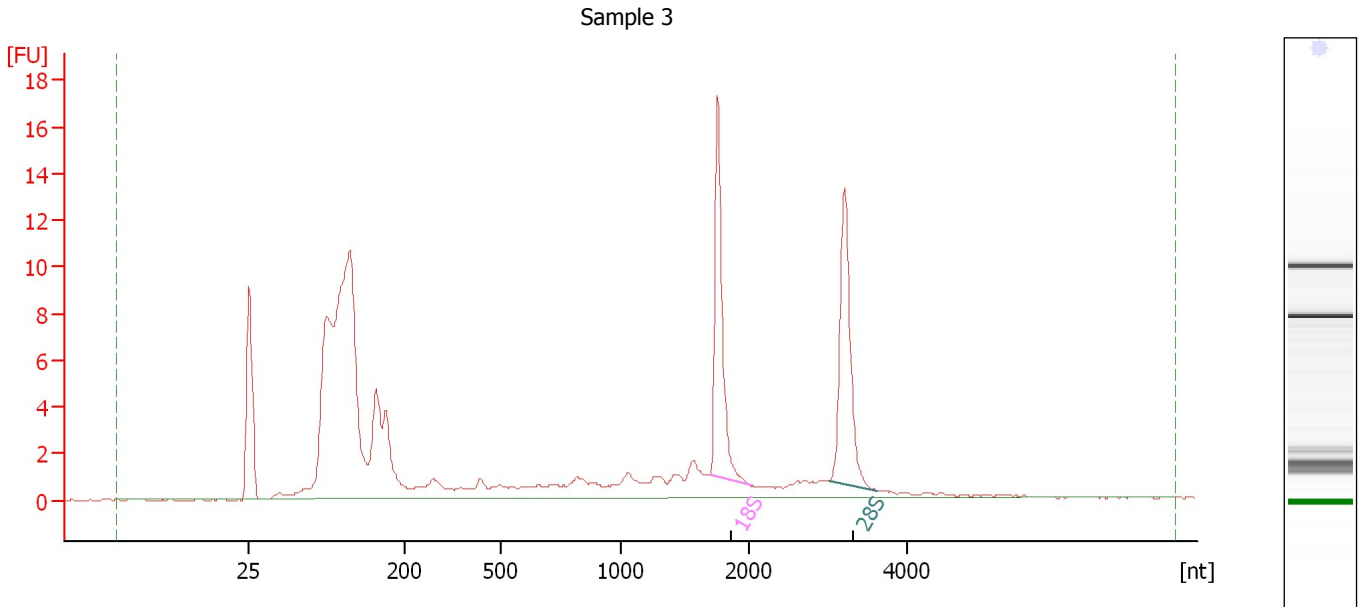
**Fragment table for sample 2 : Sample 2**

Name	Start Size [nt]	End Size [nt]	Area	% of total Area
18S	1,672	2,060	8.2	10.0
28S	3,022	3,599	6.5	7.9

Assay Class: Eukaryote Total RNA Nano  
 Data Path: C:\...ents and Settings\Bioanalyzer\2013-12-11\2013-12-11\_004.xad

Created: 12/11/2013 12:18:31 PM  
 Modified: 12/11/2013 12:42:54 PM

**Electropherogram Summary Continued ...**



**Overall Results for sample 3 : Sample 3**

RNA Area:	128.5	RNA Integrity Number (RIN):	7.6 (B.02.08, Anomaly Threshold(s) manually adapted)
RNA Concentration:	80 ng/μl	Result Flagging Color:	<span style="background-color: #ccccff; border: 1px solid black; display: inline-block; width: 20px; height: 10px;"></span>
rRNA Ratio [28s / 18s]:	1.0	Result Flagging Label:	RIN: 7.60

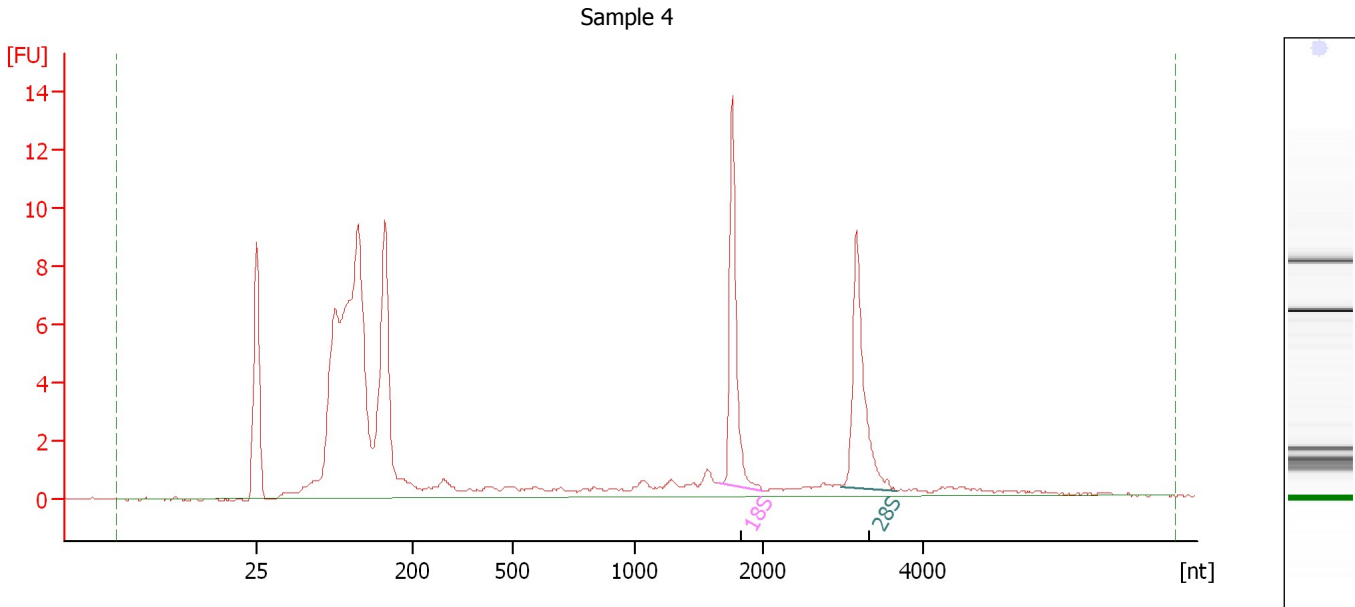
**Fragment table for sample 3 : Sample 3**

Name	Start Size [nt]	End Size [nt]	Area	% of total Area
18S	1,691	2,015	14.0	10.9
28S	3,002	3,624	13.8	10.7

Assay Class: Eukaryote Total RNA Nano  
 Data Path: C:\...ents and Settings\Bioanalyzer\2013-12-11\2013-12-11\_004.xad

Created: 12/11/2013 12:18:31 PM  
 Modified: 12/11/2013 12:42:54 PM

**Electropherogram Summary Continued ...**



**Overall Results for sample 4 : Sample 4**

RNA Area:	101.8	RNA Integrity Number (RIN):	7.9 (B.02.08, Anomaly Threshold(s) manually adapted)
RNA Concentration:	63 ng/μl	Result Flagging Color:	<span style="background-color: #ccccff; border: 1px solid black; display: inline-block; width: 20px; height: 10px;"></span>
rRNA Ratio [28s / 18s]:	0.9	Result Flagging Label:	RIN: 7.90

**Fragment table for sample 4 : Sample 4**

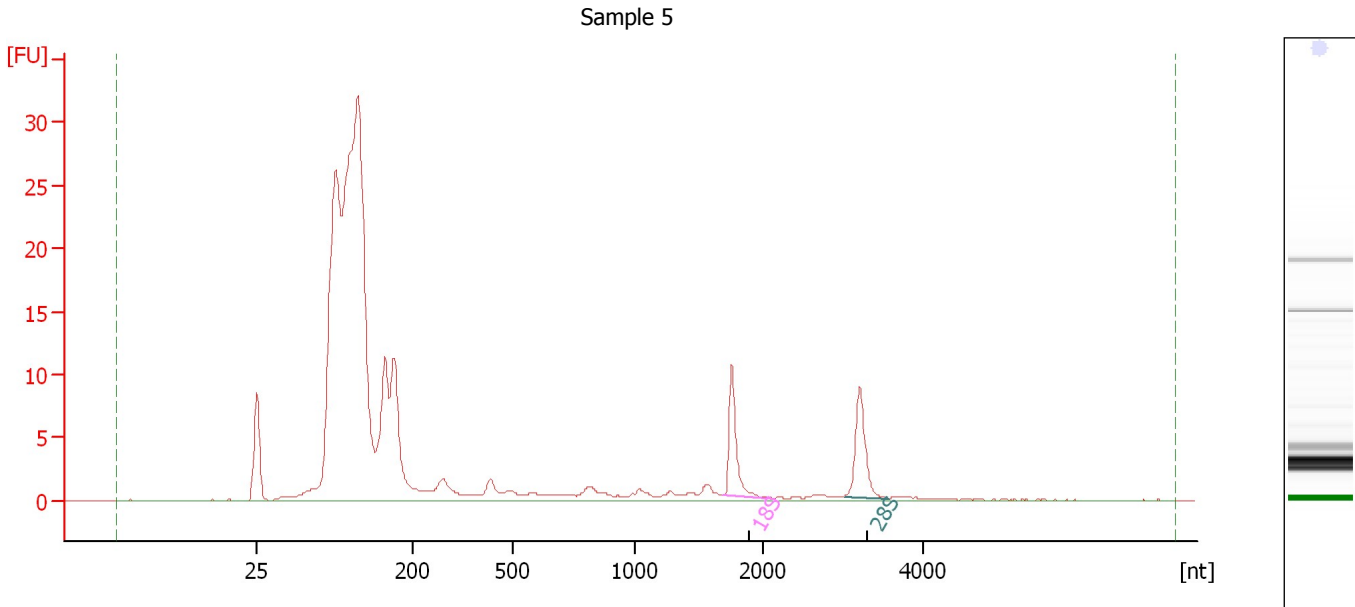
Name	Start Size [nt]	End Size [nt]	Area	% of total Area
18S	1,659	1,998	10.3	10.1
28S	2,970	3,664	9.7	9.5



Assay Class: Eukaryote Total RNA Nano  
 Data Path: C:\...ents and Settings\Bioanalyzer\2013-12-11\2013-12-11\_004.xad

Created: 12/11/2013 12:18:31 PM  
 Modified: 12/11/2013 12:42:54 PM

**Electropherogram Summary Continued ...**



**Overall Results for sample 5 : Sample 5**

RNA Area:	246.4	RNA Integrity Number (RIN):	3.9 (B.02.08, Anomaly Threshold(s) manually adapted)
RNA Concentration:	153 ng/μl	Result Flagging Color:	<span style="background-color: #ccccff; border: 1px solid black; display: inline-block; width: 20px; height: 10px;"></span>
rRNA Ratio [28s / 18s]:	1.0	Result Flagging Label:	RIN: 3.90

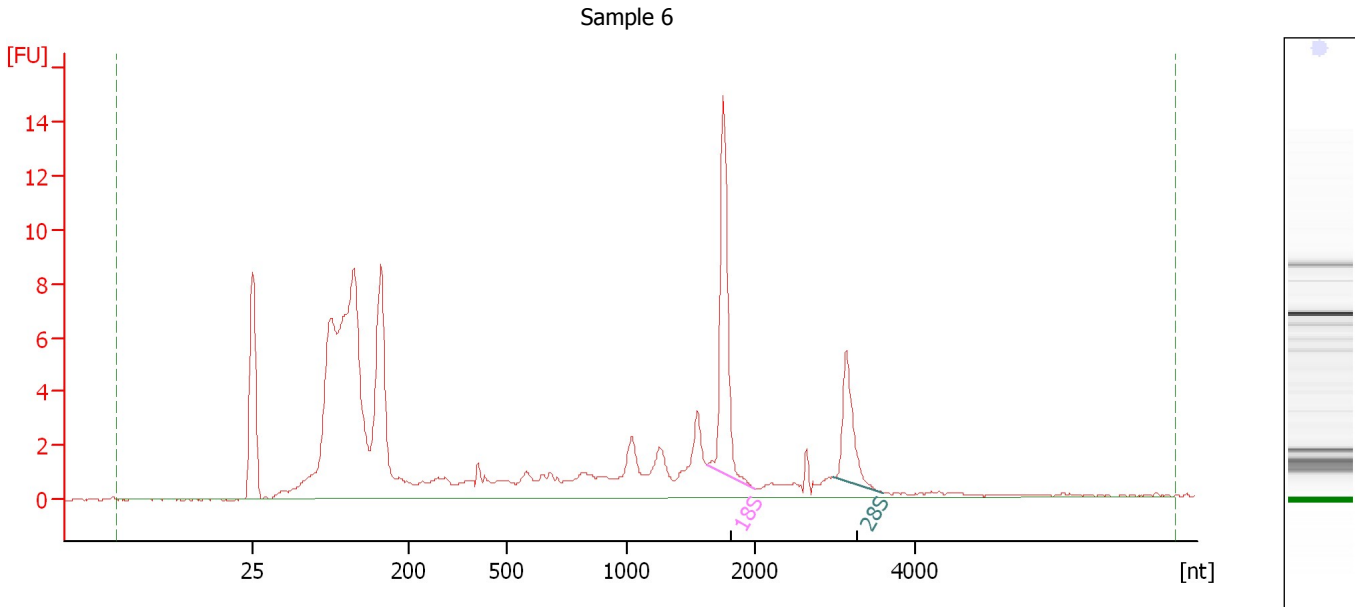
**Fragment table for sample 5 : Sample 5**

Name	Start Size [nt]	End Size [nt]	Area	% of total Area
18S	1,684	2,130	8.6	3.5
28S	3,010	3,557	8.4	3.4

Assay Class: Eukaryote Total RNA Nano  
 Data Path: C:\...ents and Settings\Bioanalyzer\2013-12-11\2013-12-11\_004.xad

Created: 12/11/2013 12:18:31 PM  
 Modified: 12/11/2013 12:42:54 PM

**Electropherogram Summary Continued ...**



**Overall Results for sample 6 : Sample 6**

RNA Area:	118.7	RNA Integrity Number (RIN):	6.4 (B.02.08, Anomaly Threshold(s) manually adapted)
RNA Concentration:	74 ng/μl	Result Flagging Color:	<span style="background-color: #ccccff; border: 1px solid black; display: inline-block; width: 20px; height: 10px;"></span>
rRNA Ratio [28s / 18s]:	0.4	Result Flagging Label:	RIN: 6.40

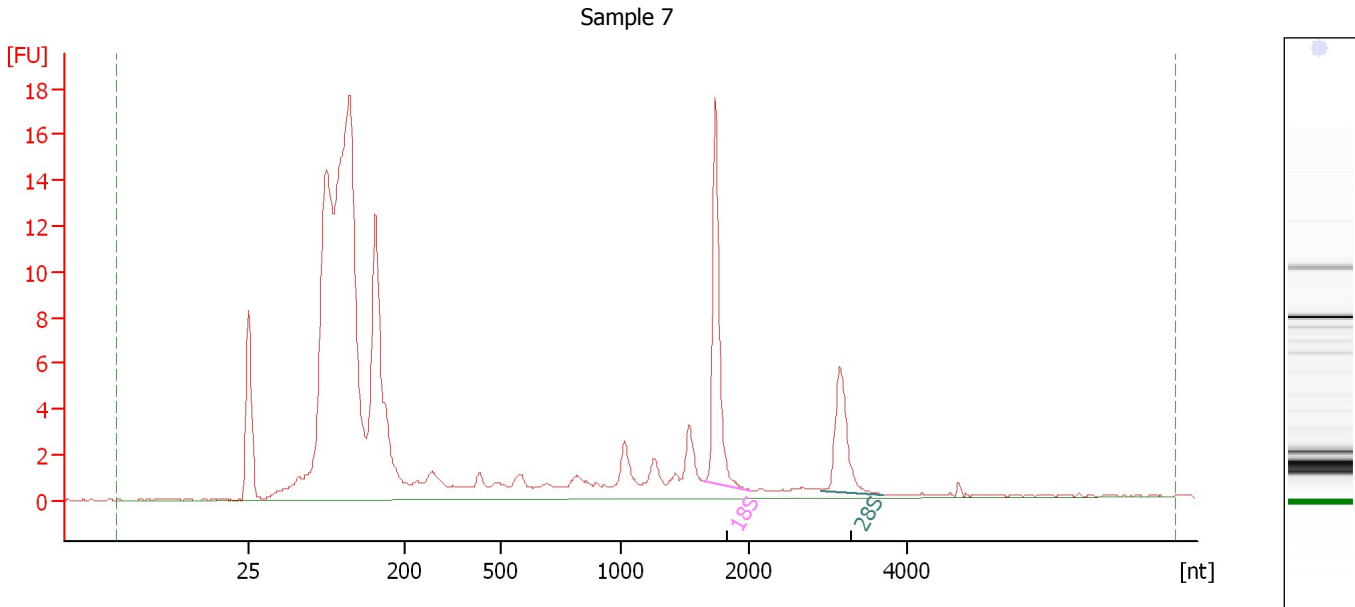
**Fragment table for sample 6 : Sample 6**

Name	Start Size [nt]	End Size [nt]	Area	% of total Area
18S	1,629	1,995	11.2	9.4
28S	2,987	3,605	5.0	4.2

Assay Class: Eukaryote Total RNA Nano  
 Data Path: C:\...ents and Settings\Bioanalyzer\2013-12-11\2013-12-11\_004.xad

Created: 12/11/2013 12:18:31 PM  
 Modified: 12/11/2013 12:42:54 PM

**Electropherogram Summary Continued ...**



**Overall Results for sample 7 : Sample 7**

RNA Area:	175.5	RNA Integrity Number (RIN):	6.5 (B.02.08, Anomaly Threshold(s) manually adapted)
RNA Concentration:	109 ng/μl	Result Flagging Color:	<span style="background-color: #ccccff; border: 1px solid black; display: inline-block; width: 20px; height: 10px;"></span>
rRNA Ratio [28s / 18s]:	0.5	Result Flagging Label:	RIN: 6.50

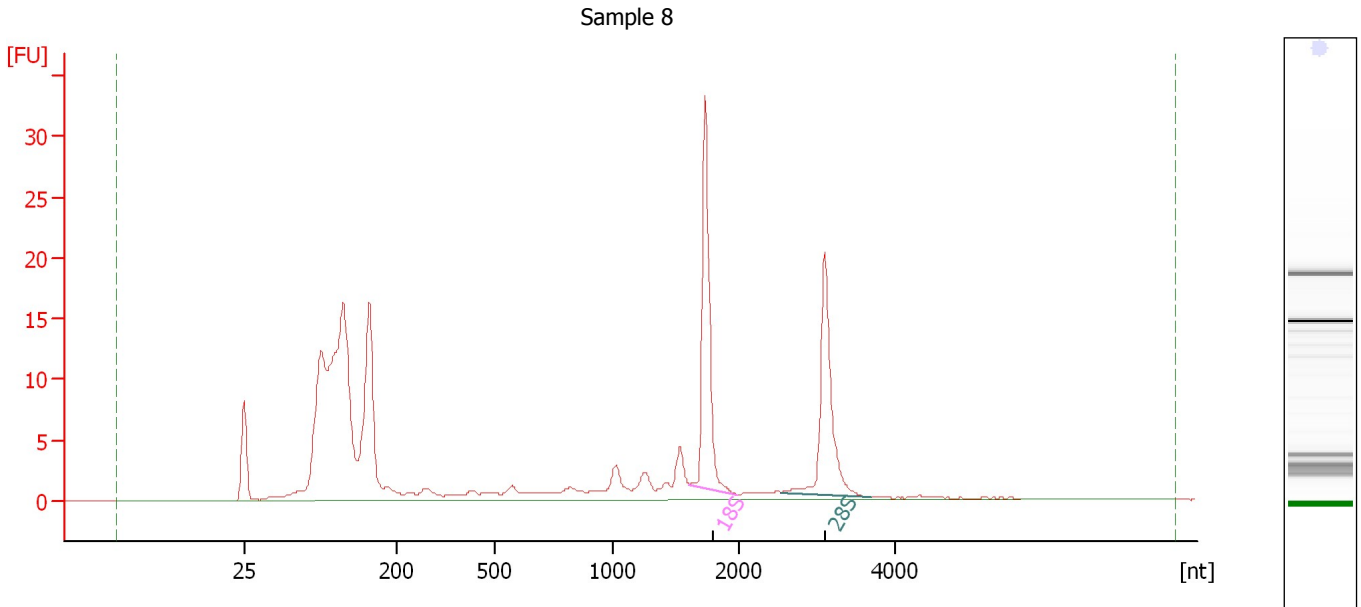
**Fragment table for sample 7 : Sample 7**

Name	Start Size [nt]	End Size [nt]	Area	% of total Area
18S	1,641	2,029	13.3	7.6
28S	2,908	3,678	6.6	3.8

Assay Class: Eukaryote Total RNA Nano  
 Data Path: C:\...ents and Settings\Bioanalyzer\2013-12-11\2013-12-11\_004.xad

Created: 12/11/2013 12:18:31 PM  
 Modified: 12/11/2013 12:42:54 PM

**Electropherogram Summary Continued ...**



**Overall Results for sample 8 : Sample 8**

RNA Area:	200.6	RNA Integrity Number (RIN):	7.8 (B.02.08, Anomaly Threshold(s) manually adapted)
RNA Concentration:	125 ng/μl	Result Flagging Color:	<span style="background-color: #ccccff; border: 1px solid black; display: inline-block; width: 20px; height: 10px;"></span>
rRNA Ratio [28s / 18s]:	0.9	Result Flagging Label:	RIN: 7.80

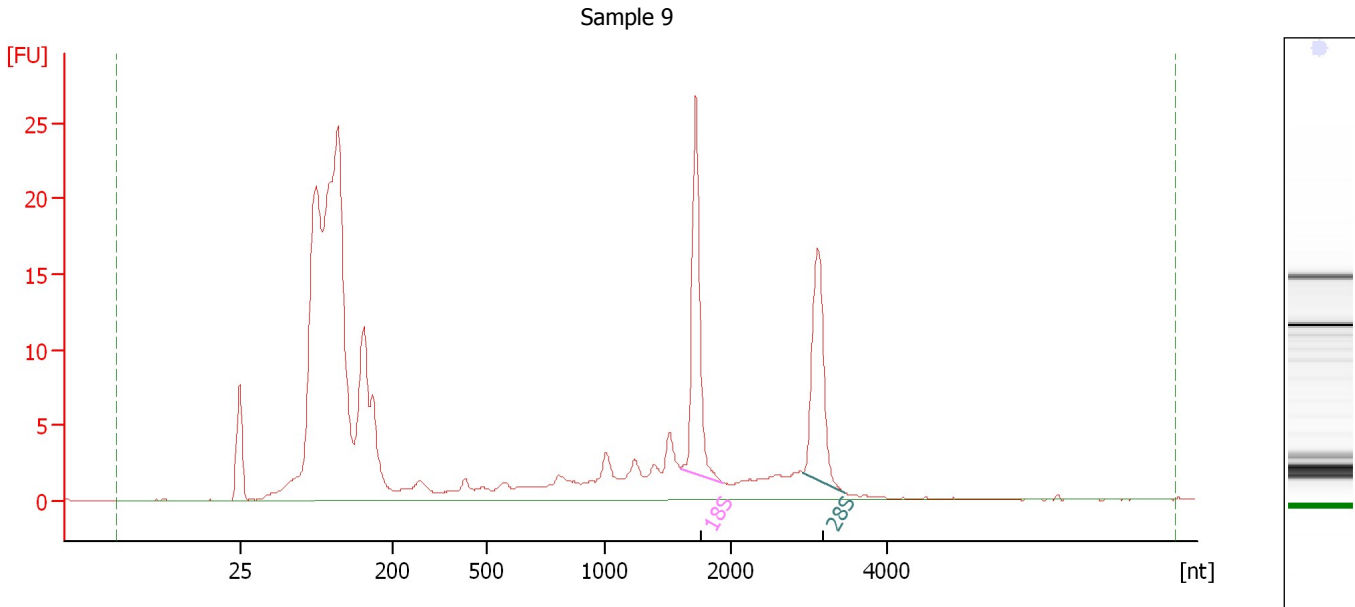
**Fragment table for sample 8 : Sample 8**

Name	Start Size [nt]	End Size [nt]	Area	% of total Area
18S	1,609	1,989	25.8	12.8
28S	2,542	3,675	22.2	11.0

Assay Class: Eukaryote Total RNA Nano  
 Data Path: C:\...ents and Settings\Bioanalyzer\2013-12-11\2013-12-11\_004.xad

Created: 12/11/2013 12:18:31 PM  
 Modified: 12/11/2013 12:42:54 PM

**Electropherogram Summary Continued ...**



**Overall Results for sample 9 : Sample 9**

RNA Area:	271.1	RNA Integrity Number (RIN):	6.9 (B.02.08, Anomaly Threshold(s) manually adapted)
RNA Concentration:	168 ng/μl	Result Flagging Color:	<span style="background-color: #ccccff; border: 1px solid black; display: inline-block; width: 20px; height: 10px;"></span>
rRNA Ratio [28s / 18s]:	0.8	Result Flagging Label:	RIN: 6.90

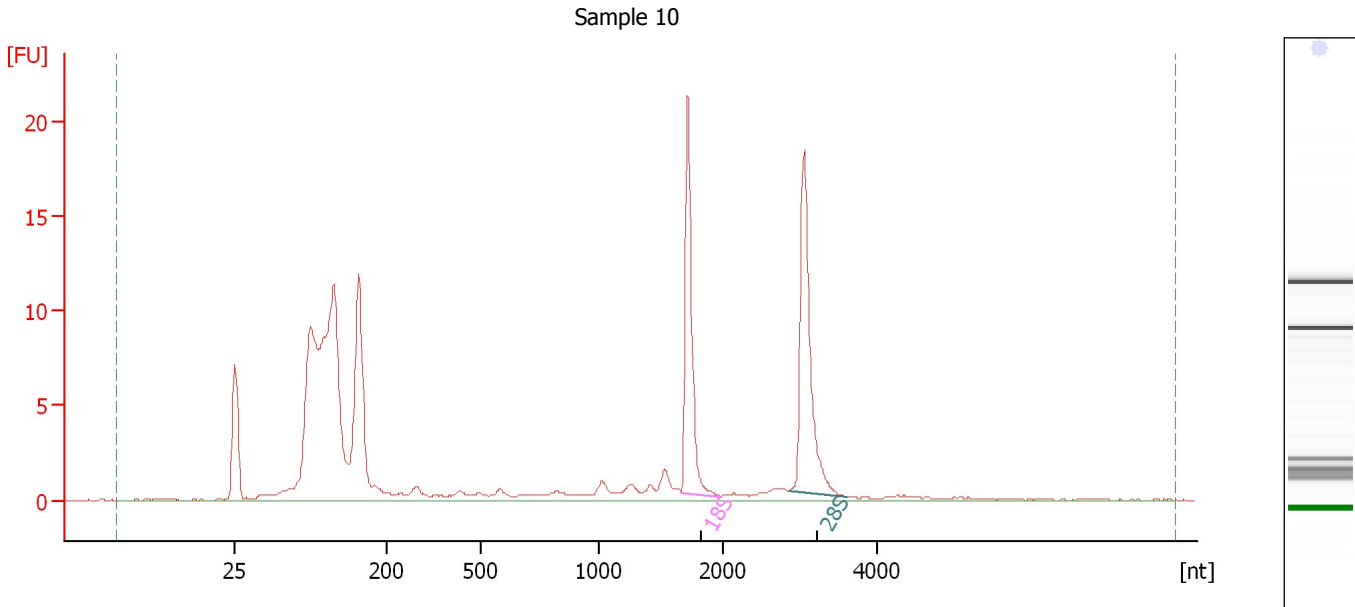
**Fragment table for sample 9 : Sample 9**

Name	Start Size [nt]	End Size [nt]	Area	% of total Area
18S	1,594	1,943	21.6	8.0
28S	2,926	3,463	17.9	6.6

Assay Class: Eukaryote Total RNA Nano  
Data Path: C:\...ents and Settings\Bioanalyzer\2013-12-11\2013-12-11\_004.xad

Created: 12/11/2013 12:18:31 PM  
Modified: 12/11/2013 12:42:54 PM

**Electropherogram Summary Continued ...**



**Overall Results for sample 10 : Sample 10**

RNA Area:	138.0	RNA Integrity Number (RIN):	8.3 (B.02.08, Anomaly Threshold(s) manually adapted)
RNA Concentration:	86 ng/μl	Result Flagging Color:	<span style="background-color: #ccccff; border: 1px solid black; display: inline-block; width: 20px; height: 10px;"></span>
rRNA Ratio [28s / 18s]:	1.1	Result Flagging Label:	RIN: 8.30

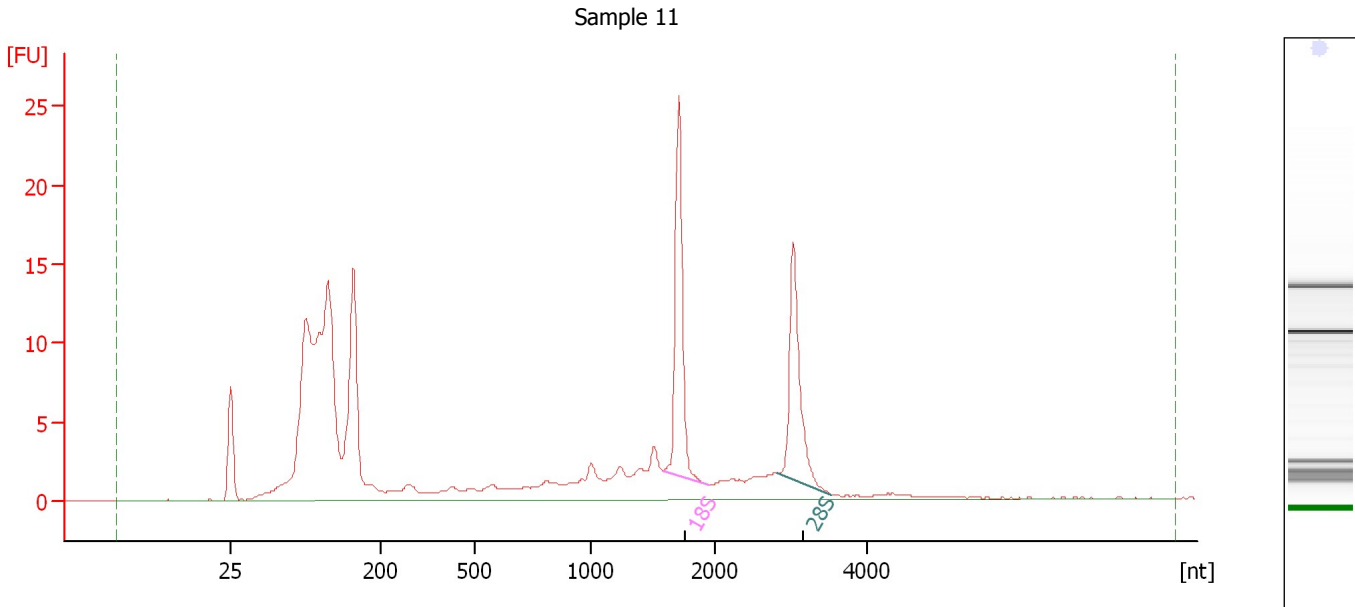
**Fragment table for sample 10 : Sample 10**

Name	Start Size [nt]	End Size [nt]	Area	% of total Area
18S	1,665	1,982	16.1	11.6
28S	2,846	3,609	18.0	13.1

Assay Class: Eukaryote Total RNA Nano  
 Data Path: C:\...ents and Settings\Bioanalyzer\2013-12-11\2013-12-11\_004.xad

Created: 12/11/2013 12:18:31 PM  
 Modified: 12/11/2013 12:42:54 PM

**Electropherogram Summary Continued ...**



**Overall Results for sample 11 : Sample 11**

RNA Area:	192.5	RNA Integrity Number (RIN):	7.2 (B.02.08, Anomaly Threshold(s) manually adapted)
RNA Concentration:	120 ng/μl	Result Flagging Color:	<span style="background-color: #ccccff; border: 1px solid black; display: inline-block; width: 20px; height: 10px;"></span>
rRNA Ratio [28s / 18s]:	0.8	Result Flagging Label:	RIN: 7.20

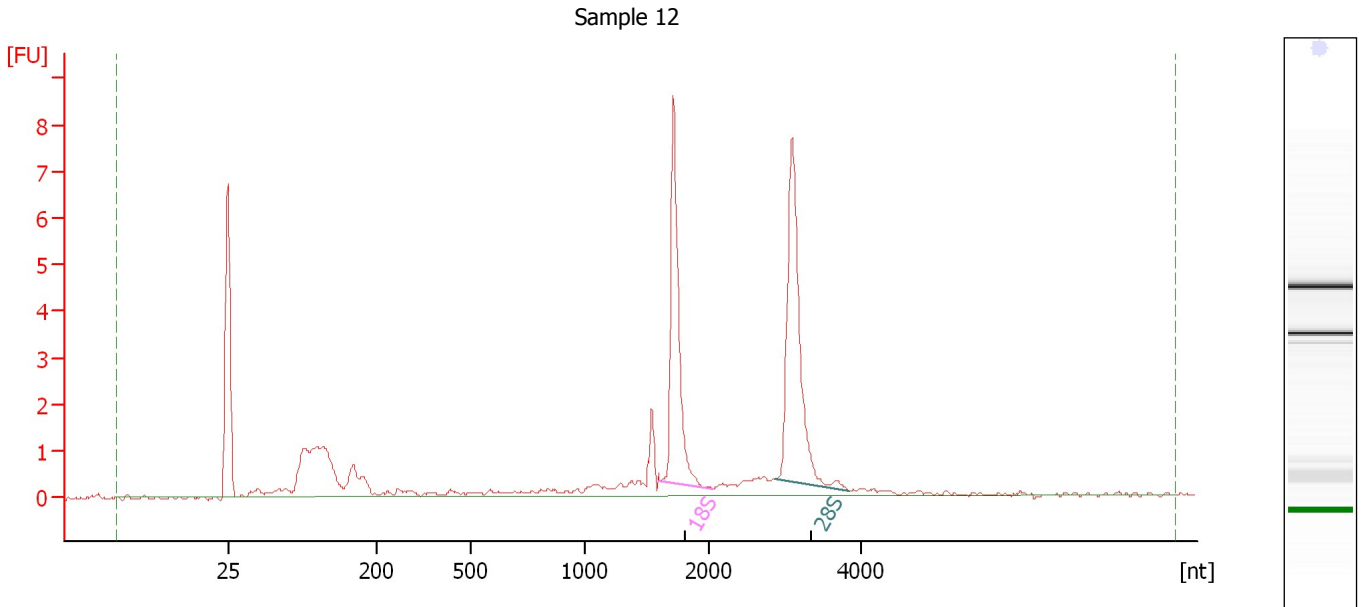
**Fragment table for sample 11 : Sample 11**

Name	Start Size [nt]	End Size [nt]	Area	% of total Area
18S	1,581	1,953	19.6	10.2
28S	2,805	3,519	16.5	8.6

Assay Class: Eukaryote Total RNA Nano  
 Data Path: C:\...ents and Settings\Bioanalyzer\2013-12-11\2013-12-11\_004.xad

Created: 12/11/2013 12:18:31 PM  
 Modified: 12/11/2013 12:42:54 PM

**Electropherogram Summary Continued ...**



**Overall Results for sample 12 : Sample 12**

RNA Area:	36.1	RNA Integrity Number (RIN):	9 (B.02.08, Anomaly Threshold(s) manually adapted)
RNA Concentration:	22 ng/μl	Result Flagging Color:	<span style="background-color: #ccccff; border: 1px solid black; display: inline-block; width: 20px; height: 10px;"></span>
rRNA Ratio [28s / 18s]:	1.3	Result Flagging Label:	RIN:9

**Fragment table for sample 12 : Sample 12**

Name	Start Size [nt]	End Size [nt]	Area	% of total Area
18S	1,602	2,061	7.4	20.6
28S	2,877	3,862	9.6	26.6



Assay Class: Eukaryote Total RNA Nano  
Data Path: C:\...ents and Settings\Bioanalyzer\2013-12-11\2013-12-11\_004.xad

Created: 12/11/2013 12:18:31 PM  
Modified: 12/11/2013 12:42:54 PM

**Gel Image**

