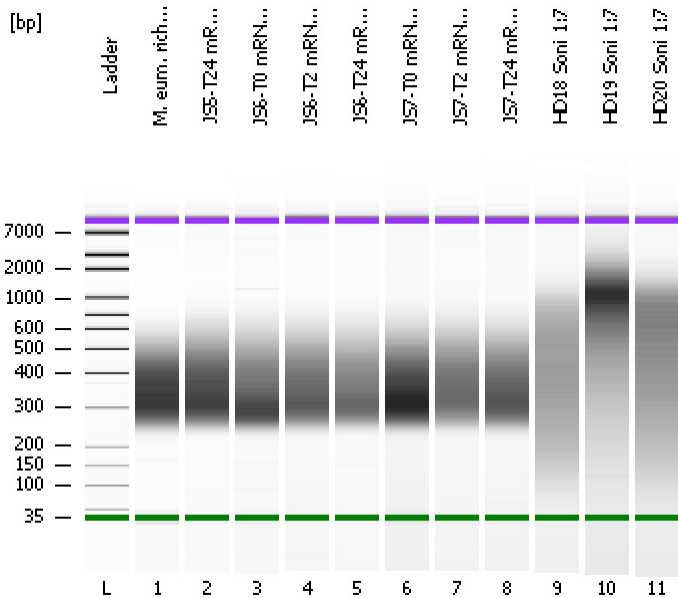


Assay Class: High Sensitivity DNA Assay
Data Path: C:\...ents and Settings\Bioanalyzer\2013-12-11\2013-12-11_006.xad

Created: 12/11/2013 4:46:26 PM
Modified: 12/11/2013 5:28:05 PM

Electrophoresis File Run Summary



Instrument Information:
 Instrument Name: DE13701086 Firmware: C.01.069
 Serial#: DE13701086 Type: G2938B

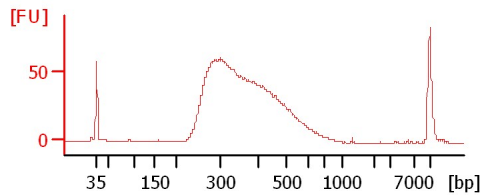
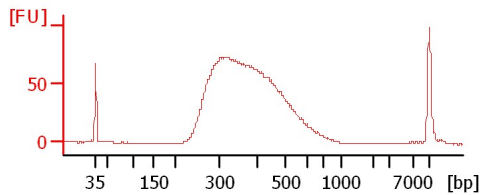
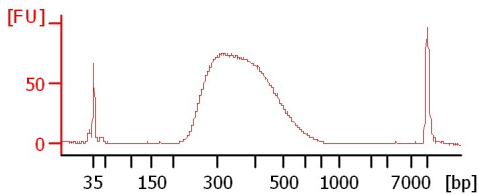
Assay Information:
 Assay Origin Path: C:\Program Files\Agilent\2100 bioanalyzer\2100 expert\assays\dsDNA\High Sensitivity DNA.xsy
 Assay Class: High Sensitivity DNA Assay
 Version: 1.03
 Assay Comments: Copyright © 2003-2010 Agilent Technologies

Chip Information:
 Chip Lot #: Reagent Kit Lot #: Chip Comments:

M. eum. rich mRNA Lib 1:2

JS5-T24 mRNA Lib 1:7

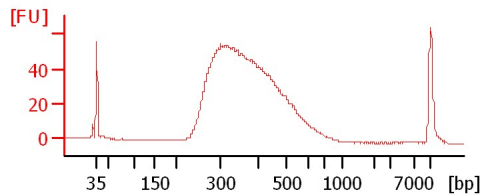
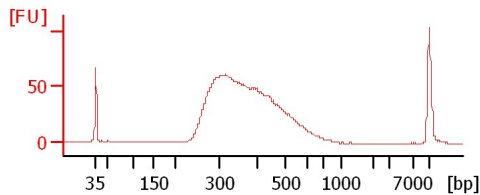
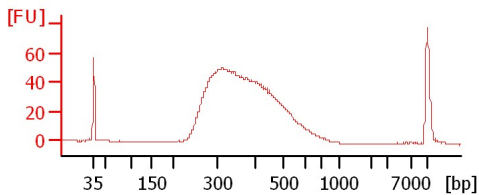
JS6-T0 mRNA Lib 1:6



JS6-T2 mRNA Lib 1:6

JS6-T24 mRNA Lib 1:7

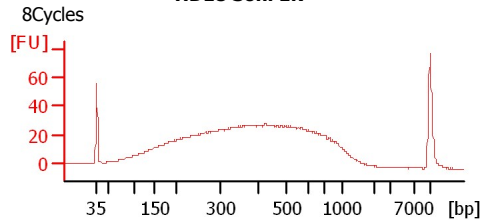
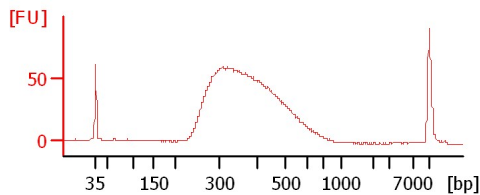
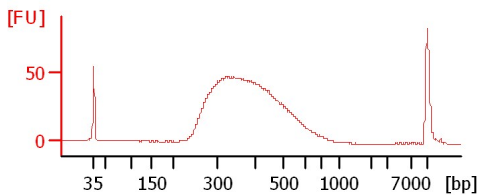
JS7-T0 mRNA Lib 1:5



JS7-T2 mRNA Lib 1:7

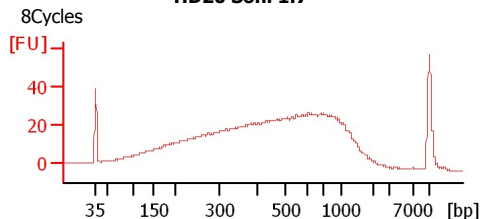
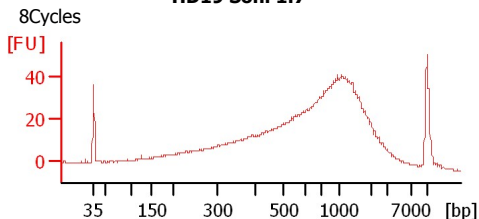
JS7-T24 mRNA Lib 1:6

HD18 Soni 1:7



HD19 Soni 1:7

HD20 Soni 1:7



Assay Class: High Sensitivity DNA Assay
Data Path: C:\...ents and Settings\Bioanalyzer\2013-12-11\2013-12-11_006.xad

Created: 12/11/2013 4:46:26 PM
Modified: 12/11/2013 5:28:05 PM

Electrophoresis File Run Summary (Chip Summary)

Sample Name	Sample Comment	Rest. Digest	Status	Observation	Result Label	Result Color
M. eum. rich mRNA Lib 1:2		<input type="checkbox"/>	✓			
JS5-T24 mRNA Lib 1:7		<input type="checkbox"/>	✓			
JS6-T0 mRNA Lib 1:6		<input type="checkbox"/>	✓			
JS6-T2 mRNA Lib 1:6		<input type="checkbox"/>	✓			
JS6-T24 mRNA Lib 1:7		<input type="checkbox"/>	✓			
JS7-T0 mRNA Lib 1:5		<input type="checkbox"/>	✓			
JS7-T2 mRNA Lib 1:7		<input type="checkbox"/>	✓			
JS7-T24 mRNA Lib 1:6		<input type="checkbox"/>	✓			
HD18 Soni 1:7	8Cycles	<input type="checkbox"/>	✓			
HD19 Soni 1:7	8Cycles	<input type="checkbox"/>	✓			
HD20 Soni 1:7	8Cycles	<input type="checkbox"/>	✓			
Ladder		<input type="checkbox"/>	✓			

Chip Lot #

Reagent Kit Lot #

Chip Comments :

Assay Class: High Sensitivity DNA Assay
Data Path: C:\...ents and Settings\Bioanalyzer\2013-12-11\2013-12-11_006.xad

Created: 12/11/2013 4:46:26 PM
Modified: 12/11/2013 5:28:05 PM

Electrophoresis Assay Details

General Analysis Settings

Number of Available Sample and Ladder Wells (Max.) : 12
Minimum Visible Range [s] : 32
Maximum Visible Range [s] : 138
Start Analysis Time Range [s] : 33
End Analysis Time Range [s] : 137.5
Ladder Concentration [pg/μl] : 1950
Uses Standard Area for Ladder Fragments
Lower Marker Concentration [pg/μl] : 125
Upper Marker Concentration [pg/μl] : 75
Used Upper Marker for Quantitation
Standard Curve Fit is Point to Point
Show Data Aligned to Lower and Upper Marker

Integrator Settings

Integration Start Time [s] : 33.05
Integration End Time [s] : 137
Slope Threshold : 0.8
Height Threshold [FU] : 5
Area Threshold : 0.1
Width Threshold [s] : 0.6
Baseline Plateau [s] : 0.5

Filter Settings

Filter Width [s] : 0.5
Polynomial Order : 4

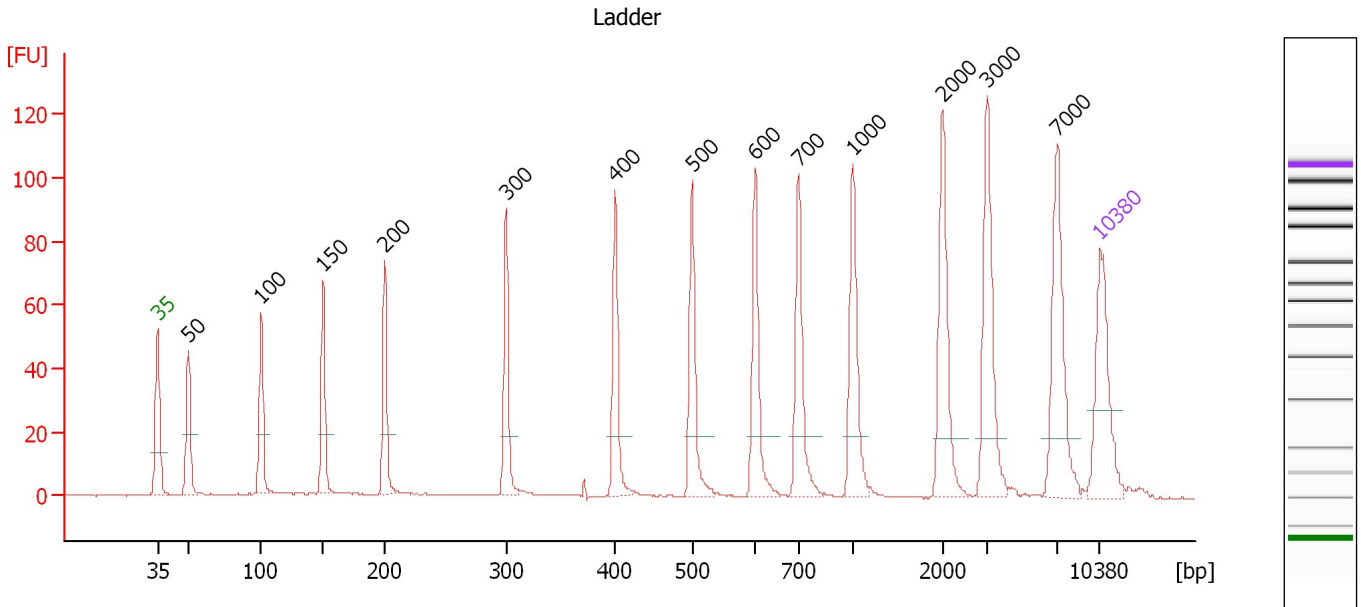
Ladder

Ladder Peak	Size	Area
1	35	160
2	50	210
3	100	208
4	150	221
5	200	242
6	300	270
7	400	305
8	500	306
9	600	336
10	700	321
11	1000	366
12	2000	413
13	3000	411
14	7000	400
15	10380	214

Assay Class: High Sensitivity DNA Assay
 Data Path: C:\...ents and Settings\Bioanalyzer\2013-12-11\2013-12-11_006.xad

Created: 12/11/2013 4:46:26 PM
 Modified: 12/11/2013 5:28:05 PM

Electropherogram Summary



Overall Results for Ladder

Noise: 0.2

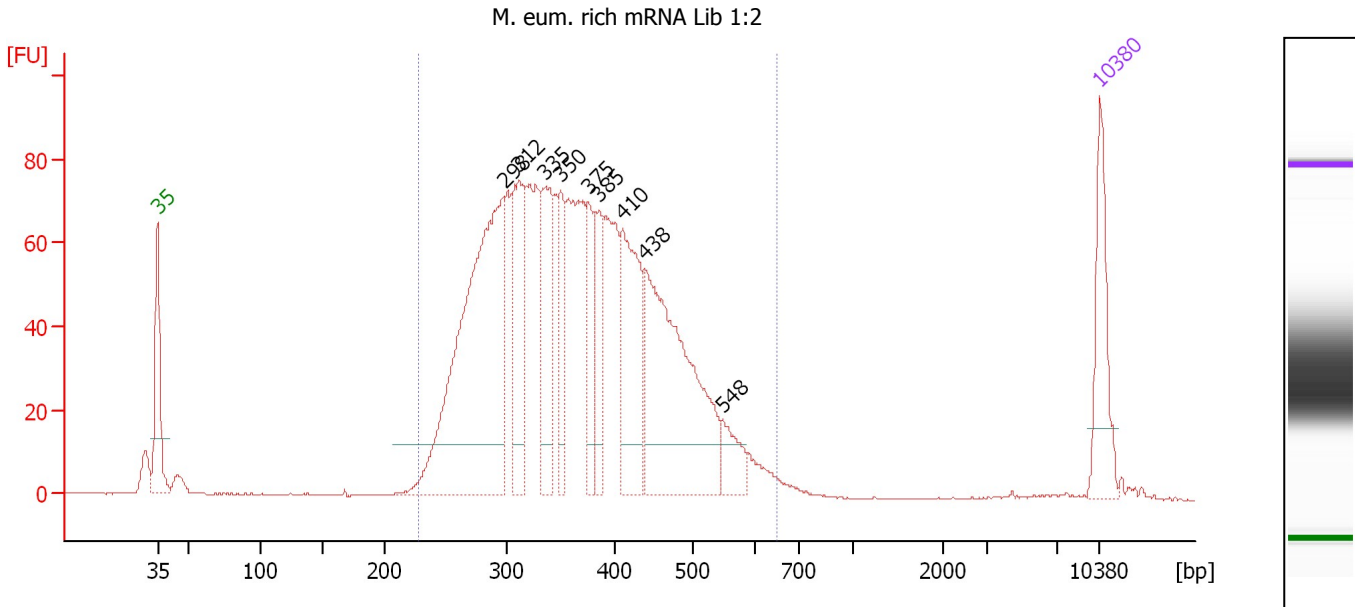
Peak table for Ladder

Peak	Aligned Migration Time [s]	Size [bp]	Conc. [pg/μl]	Molarity [pmol/l]	Observations
1	43.00	35	125.00	5,411.3	Lower Marker
2	45.30	50	150.00	4,545.5	Ladder Peak
3	50.71	100	150.00	2,272.7	Ladder Peak
4	55.31	150	150.00	1,515.2	Ladder Peak
5	59.86	200	150.00	1,136.4	Ladder Peak
6	68.89	300	150.00	757.6	Ladder Peak
7	76.98	400	150.00	568.2	Ladder Peak
8	82.68	500	150.00	454.5	Ladder Peak
9	87.41	600	150.00	378.8	Ladder Peak
10	90.60	700	150.00	324.7	Ladder Peak
11	94.65	1,000	150.00	227.3	Ladder Peak
12	101.29	2,000	150.00	113.6	Ladder Peak
13	104.61	3,000	150.00	75.8	Ladder Peak
14	109.85	7,000	150.00	32.5	Ladder Peak
15	113.00	10,380	75.00	10.9	Upper Marker

Assay Class: High Sensitivity DNA Assay
 Data Path: C:\...ents and Settings\Bioanalyzer\2013-12-11\2013-12-11_006.xad

Created: 12/11/2013 4:46:26 PM
 Modified: 12/11/2013 5:28:05 PM

Electropherogram Summary Continued ...



Setpoint Deviations for sample 1 : M. eum. rich mRNA Lib 1:2

Height Threshold [FU] : 12

Overall Results for sample 1 : M. eum. rich mRNA Lib 1:2

Number of peaks found: 9 Corr. Area 1: 1,732.7
 Noise: 0.2

Peak table for sample 1 : M. eum. rich mRNA Lib 1:2

Pea k	Aligned Migration Time [s]	Size [bp]	Conc. [pg/μl]	Molarity [pmol/l]	Observations
1	43.00	35	125.00	5,411.3	Lower Marker
2	68.72	298	569.50	2,894.0	
3	69.87	312	163.24	792.3	
4	71.75	335	133.69	604.0	
5	72.95	350	78.23	338.5	
6	74.99	375	87.11	351.5	
7	75.80	385	73.09	287.3	
8	77.55	410	175.02	646.7	
9	79.17	438	346.87	1,198.6	
10	84.93	548	40.38	111.7	
11	113.00	10,380	75.00	10.9	Upper Marker

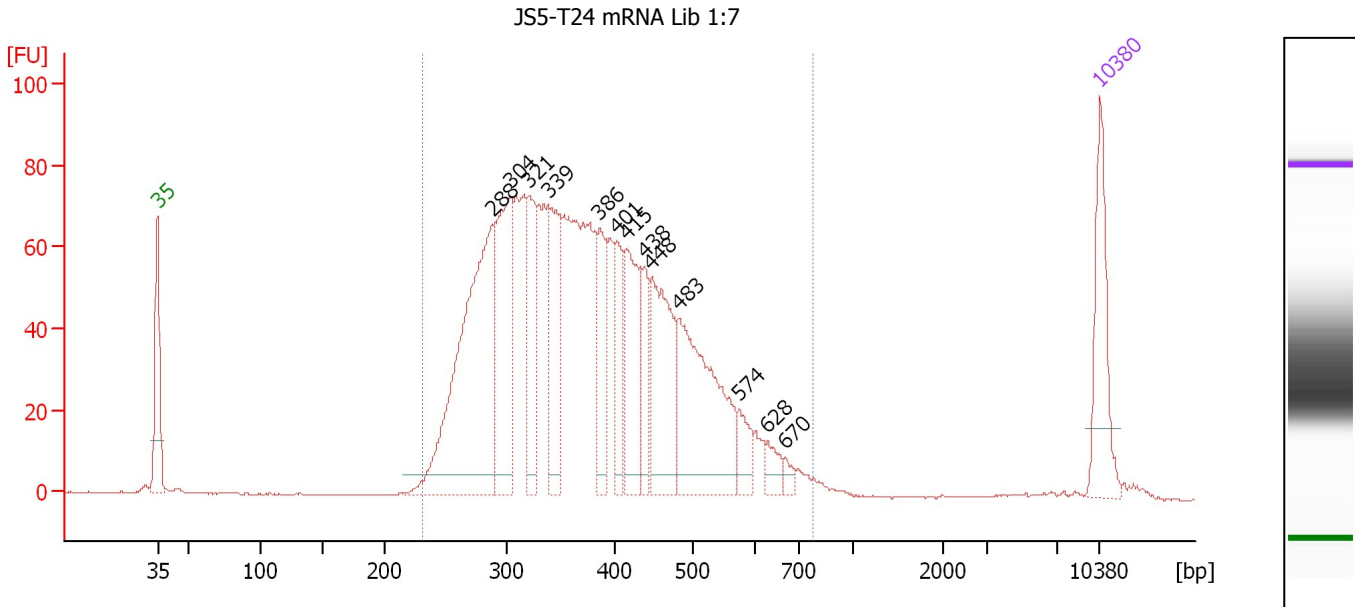
Region table for sample 1 : M. eum. rich mRNA Lib 1:2

From [bp]	To [bp]	Average Size [bp]	Molarity [pmol/l]	Conc. [pg/μl]	Corr. Area	% of Total	Size distribution in CV [%]	Color
228	650	371	10,414.3	2,390.55	1,732.7	97	22.1	Blue

Assay Class: High Sensitivity DNA Assay
 Data Path: C:\...ents and Settings\Bioanalyzer\2013-12-11\2013-12-11_006.xad

Created: 12/11/2013 4:46:26 PM
 Modified: 12/11/2013 5:28:05 PM

Electropherogram Summary Continued ...



Overall Results for sample 2 : JS5-T24 mRNA Lib 1:7

Number of peaks found: 13 Corr. Area 1: 1,766.7
 Noise: 0.2

Peak table for sample 2 : JS5-T24 mRNA Lib 1:7

Peak	Aligned Migration Time [s]	Size [bp]	Conc. [pg/μl]	Molarity [pmol/l]	Observations
1	43.00	35	125.00	5,411.3	Lower Marker
2	67.82	288	408.22	2,146.4	
3	69.19	304	203.51	1,015.1	
4	70.56	321	109.83	518.9	
5	72.06	339	129.12	576.7	
6	75.84	386	74.21	291.4	
7	77.04	401	68.71	259.6	
8	77.81	415	116.51	425.8	
9	79.14	438	52.27	180.9	
10	79.69	448	153.01	518.0	
11	81.71	483	213.23	669.0	
12	86.17	574	30.85	81.5	
13	88.31	628	18.62	44.9	
14	89.64	670	8.73	19.7	
15	113.00	10,380	75.00	10.9	Upper Marker

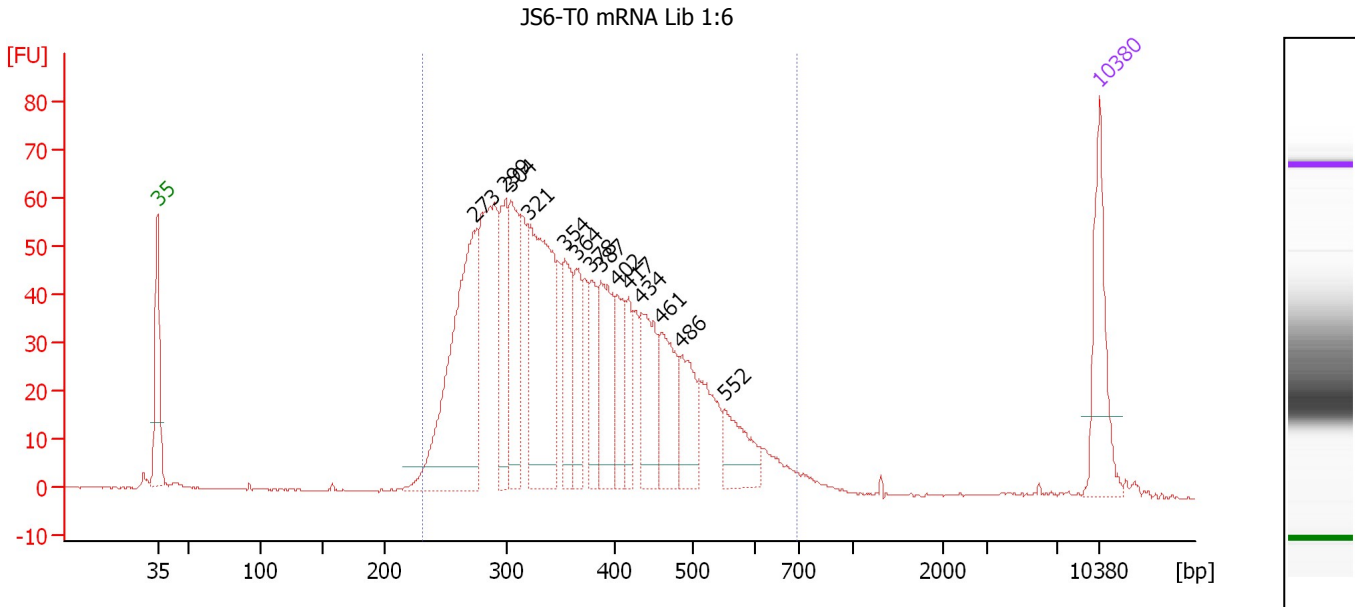
Region table for sample 2 : JS5-T24 mRNA Lib 1:7

From [bp]	To [bp]	Average Size [bp]	Molarity [pmol/l]	Conc. [pg/μl]	Corr. Area	% of Total	Size distribution in CV [%]	Color
232	776	386	9,619.9	2,260.84	1,766.7	98	25.0	Blue

Assay Class: High Sensitivity DNA Assay
 Data Path: C:\...ents and Settings\Bioanalyzer\2013-12-11\2013-12-11_006.xad

Created: 12/11/2013 4:46:26 PM
 Modified: 12/11/2013 5:28:05 PM

Electropherogram Summary Continued ...



Overall Results for sample 3 : JS6-T0 mRNA Lib 1:6

Number of peaks found: 14 Corr. Area 1: 1,342.6
 Noise: 0.2

Peak table for sample 3 : JS6-T0 mRNA Lib 1:6

Peak	Aligned Migration Time [s]	Size [bp]	Conc. [pg/μl]	Molarity [pmol/l]	Observations
1	43.00	35	125.00	5,411.3	Lower Marker
2	66.48	273	328.32	1,820.2	
3	68.83	299	108.38	548.6	
4	69.22	304	112.62	561.2	
5	70.61	321	252.76	1,192.0	
6	73.26	354	79.42	339.9	
7	74.09	364	66.49	276.6	
8	75.22	378	57.45	230.1	
9	75.91	387	109.52	429.0	
10	77.09	402	57.37	216.3	
11	77.96	417	42.07	152.8	
12	78.91	434	92.38	322.6	
13	80.43	461	85.40	280.9	
14	81.91	486	63.03	196.3	
15	85.13	552	58.83	161.5	
16	113.00	10,380	75.00	10.9	Upper Marker

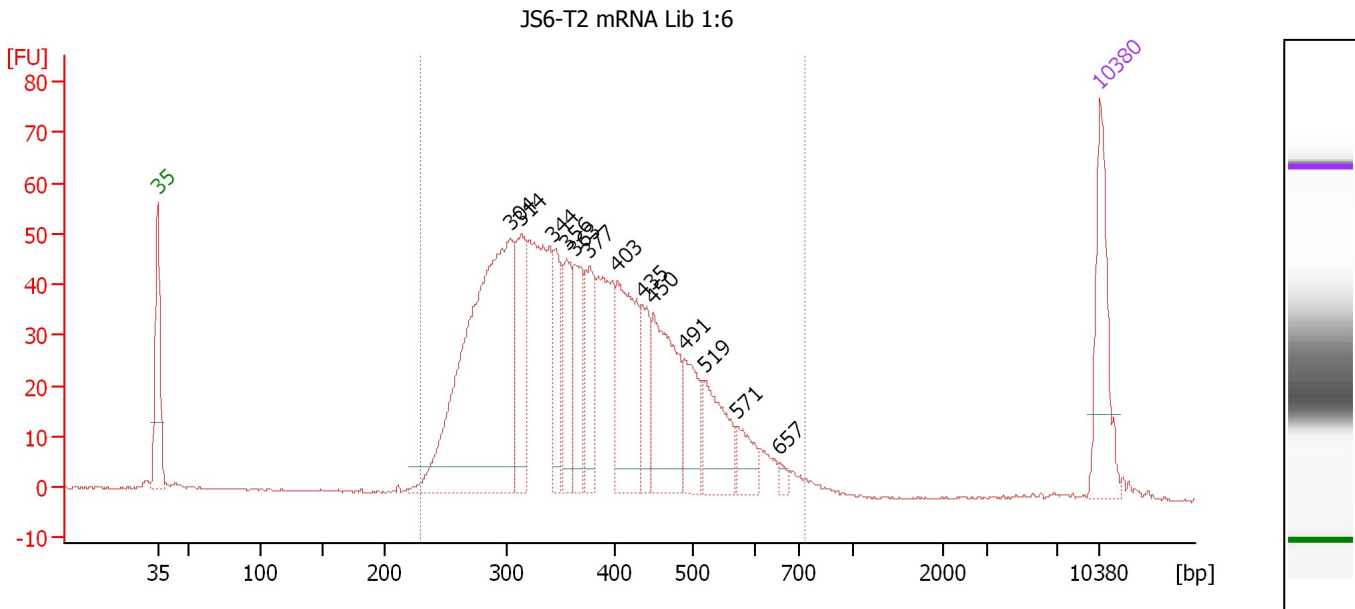
Region table for sample 3 : JS6-T0 mRNA Lib 1:6

From [bp]	To [bp]	Average Size [bp]	Molarity [pmol/l]	Conc. [pg/μl]	Corr. Area	% of Total	Size distribution in CV [%]	Color
231	699	373	9,195.3	2,086.42	1,342.6	97	25.3	Blue

Assay Class: High Sensitivity DNA Assay
 Data Path: C:\...ents and Settings\Bioanalyzer\2013-12-11\2013-12-11_006.xad

Created: 12/11/2013 4:46:26 PM
 Modified: 12/11/2013 5:28:05 PM

Electropherogram Summary Continued ...



Overall Results for sample 4 : JS6-T2 mRNA Lib 1:6

Number of peaks found: 13 Corr. Area 1: 1,181.8
 Noise: 0.2

Peak table for sample 4 : JS6-T2 mRNA Lib 1:6

Peak	Aligned Migration Time [s]	Size [bp]	Conc. [pg/μl]	Molarity [pmol/l]	Observations
1	43.00	35	125.00	5,411.3	Lower Marker
2	69.18	304	499.17	2,491.3	
3	70.02	314	106.84	515.5	
4	72.42	344	65.16	287.2	
5	73.40	356	65.71	279.8	
6	73.98	363	71.73	299.5	
7	75.09	377	68.22	274.4	
8	77.13	403	139.97	526.6	
9	79.00	435	52.30	182.0	
10	79.84	450	139.10	468.1	
11	82.16	491	61.93	191.2	
12	83.58	519	73.49	214.6	
13	86.02	571	30.27	80.4	
14	89.22	657	6.42	14.8	
15	113.00	10,380	75.00	10.9	Upper Marker

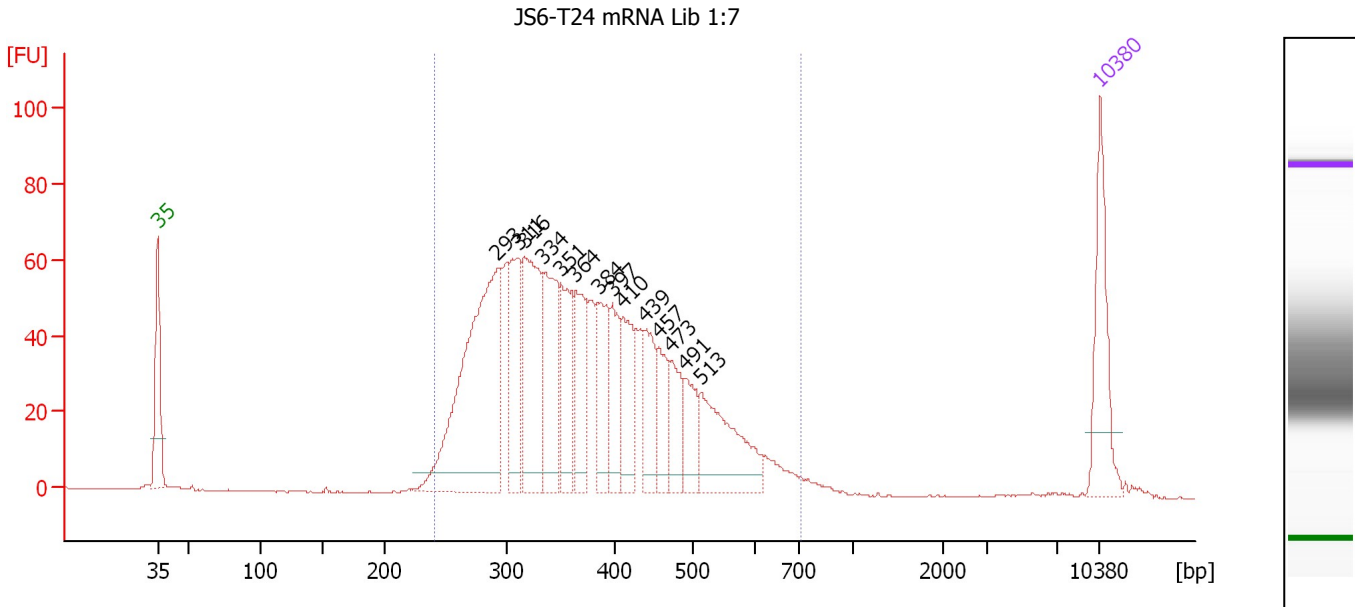
Region table for sample 4 : JS6-T2 mRNA Lib 1:6

From [bp]	To [bp]	Average Size [bp]	Molarity [pmol/l]	Conc. [pg/μl]	Corr. Area	% of Total	Size distribution in CV [%]	Color
230	737	383	7,829.3	1,829.03	1,181.8	97	24.6	Blue

Assay Class: High Sensitivity DNA Assay
 Data Path: C:\...ents and Settings\Bioanalyzer\2013-12-11\2013-12-11_006.xad

Created: 12/11/2013 4:46:26 PM
 Modified: 12/11/2013 5:28:05 PM

Electropherogram Summary Continued ...



Overall Results for sample 5 : JS6-T24 mRNA Lib 1:7

Number of peaks found: 14 Corr. Area 1: 1,379.3
 Noise: 0.2

Peak table for sample 5 : JS6-T24 mRNA Lib 1:7

Peak	Aligned Migration Time [s]	Size [bp]	Conc. [pg/μl]	Molarity [pmol/l]	Observations
1	43.00	35	125.00	5,411.3	Lower Marker
2	68.23	293	371.79	1,924.6	
3	69.76	311	101.86	496.5	
4	70.21	316	170.95	818.6	
5	71.66	334	130.79	592.9	
6	73.01	351	80.65	348.1	
7	74.05	364	80.32	334.5	
8	75.72	384	76.50	301.5	
9	76.76	397	64.52	246.1	
10	77.57	410	78.85	291.1	
11	79.20	439	59.45	205.2	
12	80.23	457	49.72	164.8	
13	81.14	473	52.41	167.9	
14	82.17	491	46.78	144.3	
15	83.30	513	120.03	354.4	
16	113.00	10,380	75.00	10.9	Upper Marker

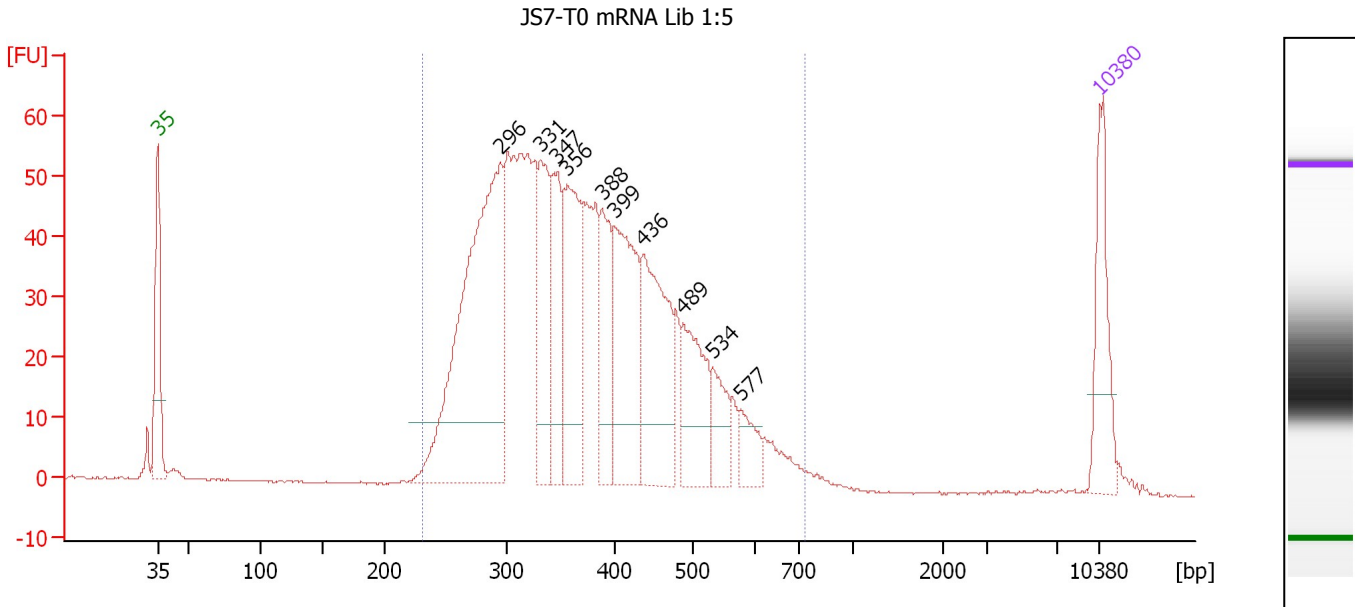
Region table for sample 5 : JS6-T24 mRNA Lib 1:7

From [bp]	To [bp]	Average Size [bp]	Molarity [pmol/l]	Conc. [pg/μl]	Corr. Area	% of Total	Size distribution in CV [%]	Color
240	711	382	7,379.4	1,723.04	1,379.3	97	24.4	Blue

Assay Class: High Sensitivity DNA Assay
 Data Path: C:\...ents and Settings\Bioanalyzer\2013-12-11\2013-12-11_006.xad

Created: 12/11/2013 4:46:26 PM
 Modified: 12/11/2013 5:28:05 PM

Electropherogram Summary Continued ...



Setpoint Deviations for sample 6 : JS7-T0 mRNA Lib 1:5

Height Threshold [FU] : 10

Overall Results for sample 6 : JS7-T0 mRNA Lib 1:5

Number of peaks found: 10 Corr. Area 1: 1,252.7
 Noise: 0.1

Peak table for sample 6 : JS7-T0 mRNA Lib 1:5

Peak	Aligned Migration Time [s]	Size [bp]	Conc. [pg/μl]	Molarity [pmol/l]	Observations
1	43.00	35	125.00	5,411.3	Lower Marker
2	68.49	296	534.26	2,738.3	
3	71.41	331	137.60	629.5	
4	72.69	347	115.71	505.3	
5	73.42	356	187.41	797.7	
6	76.02	388	101.12	394.8	
7	76.93	399	194.37	737.4	
8	79.03	436	187.89	653.1	
9	82.04	489	114.72	355.7	
10	84.27	534	50.09	142.2	
11	86.32	577	35.34	92.8	
12	113.00	10,380	75.00	10.9	Upper Marker

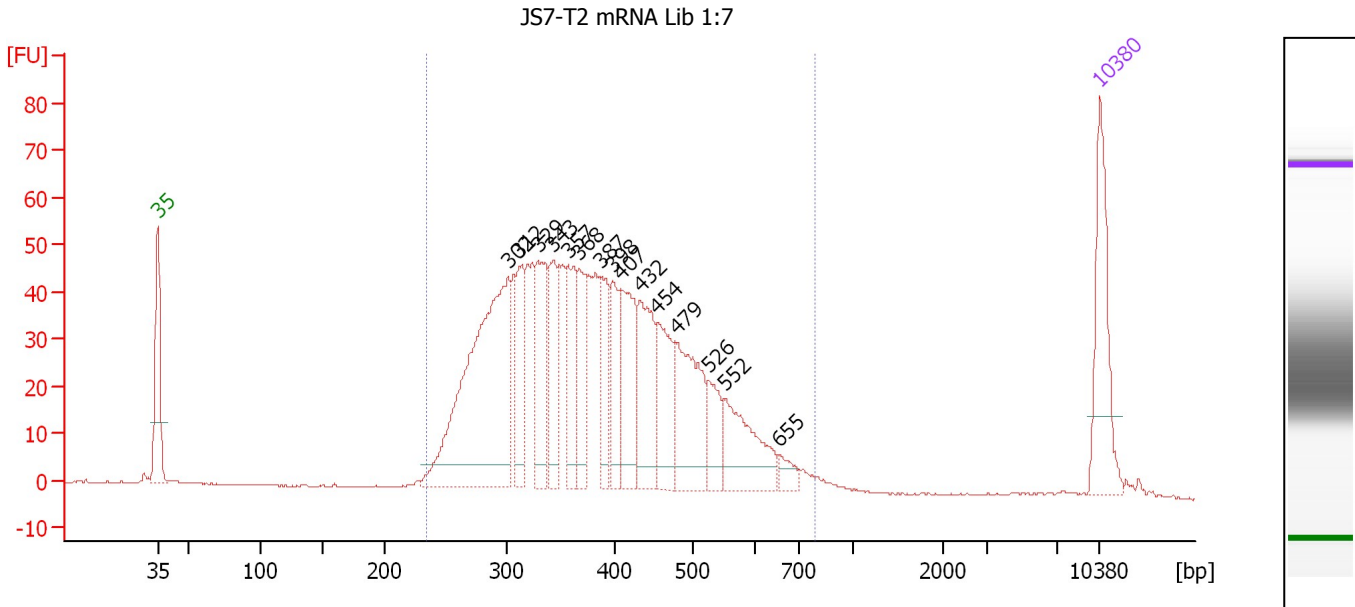
Region table for sample 6 : JS7-T0 mRNA Lib 1:5

From [bp]	To [bp]	Average Size [bp]	Molarity [pmol/l]	Conc. [pg/μl]	Corr. Area	% of Total	Size distribution in CV [%]	Color
231	737	380	9,986.0	2,318.29	1,252.7	97	24.5	Blue

Assay Class: High Sensitivity DNA Assay
 Data Path: C:\...ents and Settings\Bioanalyzer\2013-12-11\2013-12-11_006.xad

Created: 12/11/2013 4:46:26 PM
 Modified: 12/11/2013 5:28:05 PM

Electropherogram Summary Continued ...



Overall Results for sample 7 : JS7-T2 mRNA Lib 1:7

Number of peaks found: 15 Corr. Area 1: 1,154.9
 Noise: 0.1

Peak table for sample 7 : JS7-T2 mRNA Lib 1:7

Peak	Aligned Migration Time [s]	Size [bp]	Conc. [pg/μl]	Molarity [pmol/l]	Observations
1	43.00	35	125.00	5,411.3	Lower Marker
2	69.04	302	361.26	1,813.0	
3	69.87	312	66.78	324.1	
4	71.26	329	89.46	411.6	
5	72.37	343	68.36	302.0	
6	73.47	357	78.08	331.7	
7	74.35	368	62.40	257.2	
8	75.92	387	57.51	225.2	
9	76.80	398	58.17	221.6	
10	77.40	407	92.90	345.5	
11	78.83	432	93.64	328.1	
12	80.08	454	78.14	260.6	
13	81.51	479	109.22	345.2	
14	83.91	526	40.46	116.5	
15	85.16	552	84.45	231.7	
16	89.17	655	13.83	32.0	
17	113.00	10,380	75.00	10.9	Upper Marker

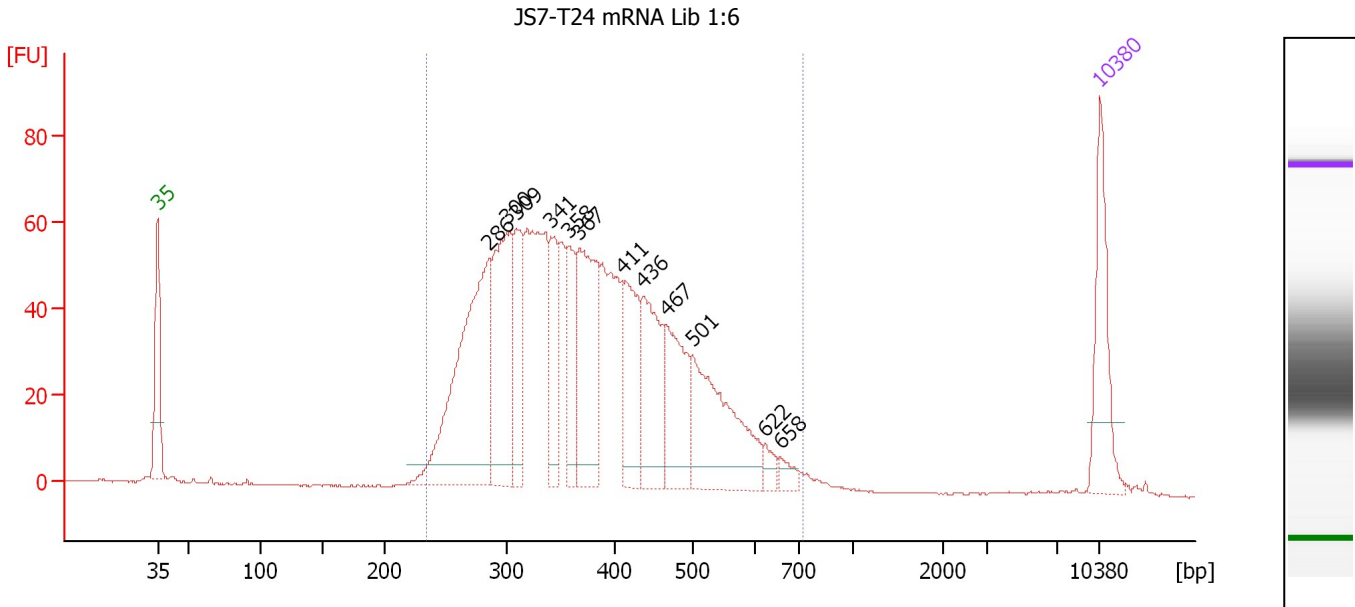
Region table for sample 7 : JS7-T2 mRNA Lib 1:7

From [bp]	To [bp]	Average Size [bp]	Molarity [pmol/l]	Conc. [pg/μl]	Corr. Area	% of Total	Size distribution in CV [%]	Color
235	791	394	6,973.0	1,671.40	1,154.9	98	25.0	Blue

Assay Class: High Sensitivity DNA Assay
 Data Path: C:\...ents and Settings\Bioanalyzer\2013-12-11\2013-12-11_006.xad

Created: 12/11/2013 4:46:26 PM
 Modified: 12/11/2013 5:28:05 PM

Electropherogram Summary Continued ...



Overall Results for sample 8 : JS7-T24 mRNA Lib 1:6

Number of peaks found: 12 Corr. Area 1: 1,399.6
 Noise: 0.2

Peak table for sample 8 : JS7-T24 mRNA Lib 1:6

Peak	Aligned Migration Time [s]	Size [bp]	Conc. [pg/μl]	Molarity [pmol/l]	Observations
1	43.00	35	125.00	5,411.3	Lower Marker
2	67.66	286	324.98	1,719.1	
3	68.91	300	194.41	980.8	
4	69.66	309	93.91	459.7	
5	72.21	341	73.99	328.8	
6	73.55	358	78.14	331.0	
7	74.34	367	171.40	706.9	
8	77.58	411	106.58	393.3	
9	79.02	436	125.42	436.1	
10	80.83	467	104.58	339.0	
11	82.73	501	172.35	521.3	
12	88.11	622	12.73	31.0	
13	89.26	658	12.08	27.8	
14	113.00	10,380	75.00	10.9	Upper Marker

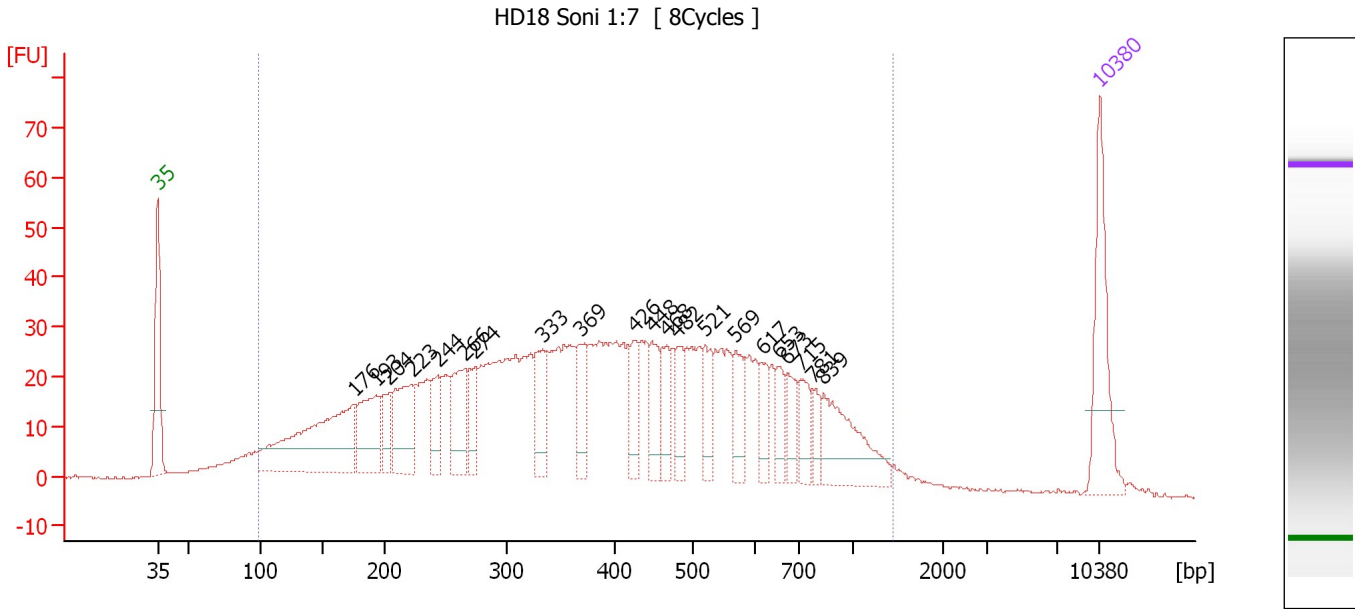
Region table for sample 8 : JS7-T24 mRNA Lib 1:6

From [bp]	To [bp]	Average Size [bp]	Molarity [pmol/l]	Conc. [pg/μl]	Corr. Area	% of Total	Size distribution in CV [%]	Color
235	727	383	8,310.4	1,944.45	1,399.6	98	24.5	Blue

Assay Class: High Sensitivity DNA Assay
 Data Path: C:\...ents and Settings\Bioanalyzer\2013-12-11\2013-12-11_006.xad

Created: 12/11/2013 4:46:26 PM
 Modified: 12/11/2013 5:28:05 PM

Electropherogram Summary Continued ...



Overall Results for sample 9 : HD18 Soni 1:7

Number of peaks found: 21 Corr. Area 1: 1,378.4
 Noise: 0.1

Peak table for sample 9 : HD18 Soni 1:7

Peak	Aligned Migration Time [s]	Size [bp]	Conc. [pg/μl]	Molarity [pmol/l]	Observations
1	43.00	35	125.00	5,411.3	Lower Marker
2	57.64	176	214.11	1,847.2	
3	59.21	193	81.34	638.9	
4	60.23	204	35.69	264.9	
5	61.90	223	87.97	598.8	
6	63.85	244	44.18	274.2	
7	65.79	266	65.75	374.9	
8	66.53	274	37.42	207.0	
9	71.58	333	57.02	259.2	
10	74.50	369	39.91	163.7	
11	78.49	426	42.34	150.4	
12	79.74	448	40.89	138.2	
13	80.85	468	37.37	121.0	
14	81.64	482	32.45	102.1	
15	83.68	521	37.42	108.8	
16	85.95	569	37.42	99.6	
17	87.94	617	28.08	69.0	
18	89.10	653	25.38	58.9	
19	89.74	673	26.96	60.7	
20	90.81	715	28.26	59.9	
21	91.69	781	17.00	33.0	
22	92.48	839	84.80	153.1	
23	113.00	10,380	75.00	10.9	Upper Marker

Assay Class: High Sensitivity DNA Assay
Data Path: C:\...ents and Settings\Bioanalyzer\2013-12-11\2013-12-11_006.xad

Created: 12/11/2013 4:46:26 PM
Modified: 12/11/2013 5:28:05 PM

Electropherogram Summary Continued ...

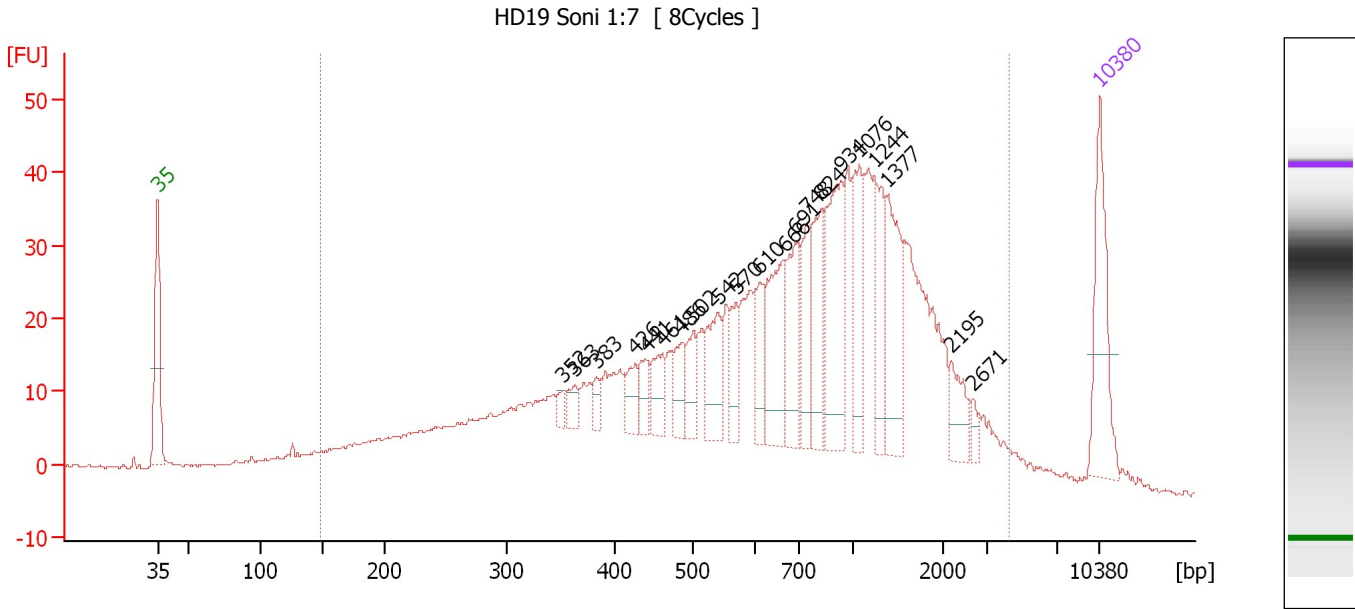
... Region table for sample 9 : HD18 Soni 1:7

From [bp]	To [bp]	Average Size [bp]	Molarity [pmol/l]	Conc. [pg/μl]	Corr. Area	% of Total	Size distribution in CV [%]	Color
97	1,452	432	11,914.6	2,273.32	1,378.4	95	52.0	■

Assay Class: High Sensitivity DNA Assay
 Data Path: C:\...ents and Settings\Bioanalyzer\2013-12-11\2013-12-11_006.xad

Created: 12/11/2013 4:46:26 PM
 Modified: 12/11/2013 5:28:05 PM

Electropherogram Summary Continued ...



Overall Results for sample 10 : HD19 Soni 1:7

Number of peaks found: 21 Corr. Area 1: 1,082.9
 Noise: 0.2

Peak table for sample 10 : HD19 Soni 1:7

Peak	Aligned Migration Time [s]	Size [bp]	Conc. [pg/μl]	Molarity [pmol/l]	Observations
1	43.00	35	125.00	5,411.3	Lower Marker
2	73.12	352	11.25	48.4	
3	74.00	363	14.97	62.4	
4	75.63	383	13.19	52.2	
5	78.46	426	24.47	87.0	
6	79.30	441	24.36	83.8	
7	80.46	461	34.35	112.9	
8	81.90	486	31.09	96.8	
9	82.79	502	32.15	97.0	
10	84.65	542	53.47	149.6	
11	85.99	570	32.65	86.8	
12	87.71	610	36.46	90.6	
13	89.53	666	90.57	206.0	
14	90.32	691	66.76	146.4	
15	91.25	748	55.08	111.6	
16	92.27	824	63.26	116.4	
17	93.76	934	110.65	179.5	
18	95.15	1,076	64.59	91.0	
19	96.27	1,244	59.57	72.6	
20	97.15	1,377	80.59	88.7	
21	101.94	2,195	27.14	18.7	
22	103.52	2,671	7.66	4.3	
23	113.00	10,380	75.00	10.9	Upper Marker

Assay Class: High Sensitivity DNA Assay
Data Path: C:\...ents and Settings\Bioanalyzer\2013-12-11\2013-12-11_006.xad

Created: 12/11/2013 4:46:26 PM
Modified: 12/11/2013 5:28:05 PM

Electropherogram Summary Continued ...

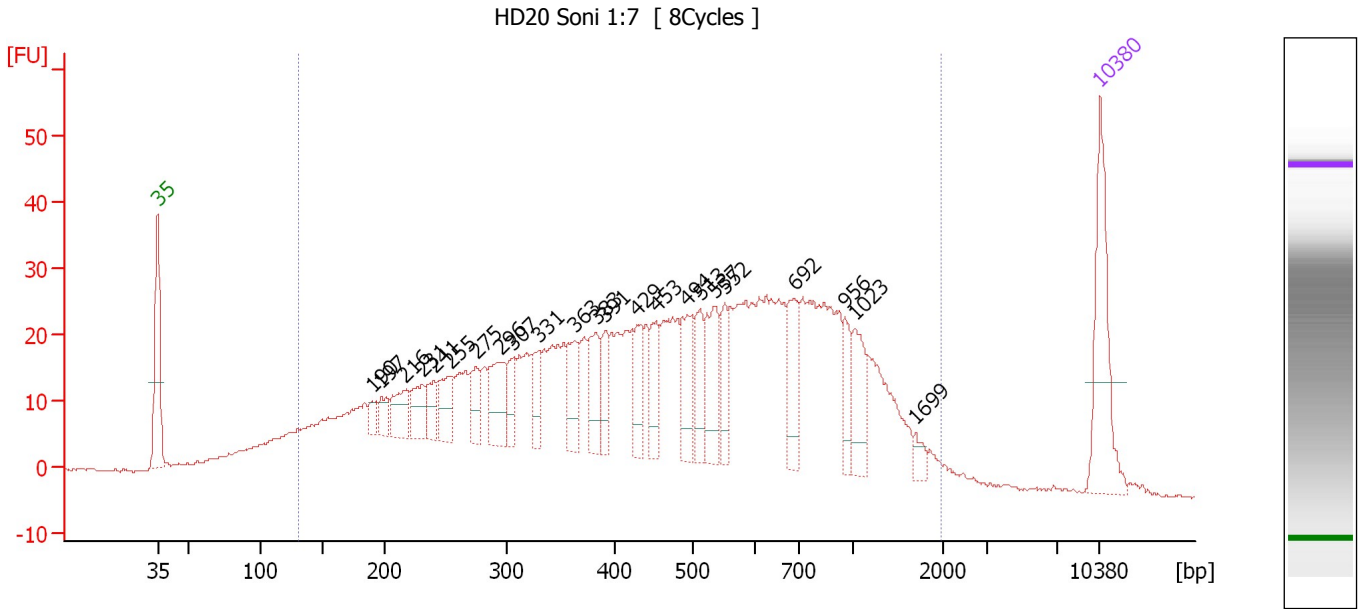
... Region table for sample 10 : **HD19 Soni 1:7**

From [bp]	To [bp]	Average Size [bp]	Molarity [pmol/l]	Conc. [pg/μl]	Corr. Area	% of Total	Size distribution in CV [%]	Color
148	4,266	911	7,181.3	2,355.69	1,082.9	95	71.3	■

Assay Class: High Sensitivity DNA Assay
 Data Path: C:\...ents and Settings\Bioanalyzer\2013-12-11\2013-12-11_006.xad

Created: 12/11/2013 4:46:26 PM
 Modified: 12/11/2013 5:28:05 PM

Electropherogram Summary Continued ...



Overall Results for sample 11 : HD20 Soni 1:7

Number of peaks found: 23 Corr. Area 1: 1,166.0
 Noise: 0.2

Peak table for sample 11 : HD20 Soni 1:7


Peak	Aligned Migration Time [s]	Size [bp]	Conc. [pg/μl]	Molarity [pmol/l]	Observations
1	43.00	35	125.00	5,411.3	Lower Marker
2	58.91	190	13.83	110.5	
3	59.61	197	19.32	148.4	
4	61.30	216	33.80	237.2	
5	62.70	231	34.07	223.0	
6	63.59	241	25.10	157.6	
7	64.80	255	36.40	216.5	
8	66.63	275	28.38	156.4	
9	68.55	296	52.05	266.2	
10	69.44	307	25.19	124.4	
11	71.36	331	26.26	120.4	
12	73.98	363	40.34	168.4	
13	75.57	383	43.65	172.9	
14	76.27	391	28.54	110.5	
15	78.61	429	36.50	129.0	
16	80.01	453	37.01	123.7	
17	82.35	494	47.99	147.1	
18	83.29	513	36.28	107.2	
19	84.41	537	54.50	153.9	
20	85.16	552	31.20	85.6	
21	90.35	692	46.48	101.7	
22	94.05	956	24.26	38.5	
23	94.80	1,023	41.37	61.3	
24	99.29	1,699	9.48	8.5	
25	113.00	10,380	75.00	10.9	Upper Marker

Assay Class: High Sensitivity DNA Assay
Data Path: C:\...ents and Settings\Bioanalyzer\2013-12-11\2013-12-11_006.xad

Created: 12/11/2013 4:46:26 PM
Modified: 12/11/2013 5:28:05 PM

Electropherogram Summary Continued ...

... Region table for sample 11 : **HD20 Soni 1:7**

From [bp]	To [bp]	Average Size [bp]	Molarity [pmol/l]	Conc. [pg/μl]	Corr. Area	% of Total	Size distribution in CV [%]	Color
130	1,996	553	10,213.2	2,356.46	1,166.0	93	61.0	

Assay Class: High Sensitivity DNA Assay
Data Path: C:\...ents and Settings\Bioanalyzer\2013-12-11\2013-12-11_006.xad

Created: 12/11/2013 4:46:26 PM
Modified: 12/11/2013 5:28:05 PM

Gel Image

