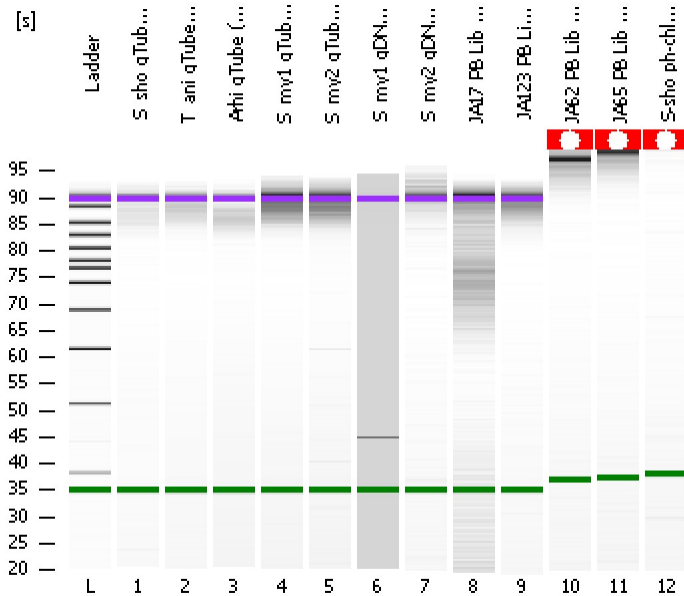


Assay Class: DNA 12000
Data Path: C:\...ents and Settings\Bioanalyzer\2013-12-12\2013-12-12_001.xad

Created: 12/12/2013 9:17:25 AM
Modified: 12/12/2013 10:00:55 AM

Electrophoresis File Run Summary



Instrument Information:

Instrument Name: DE13701086 Firmware: C.01.069
Serial#: DE13701086 Type: G2938B

Assay Information:

Assay Origin Path: C:\Program Files\Agilent\2100 bioanalyzer\2100 expert\assays\dsDNA\DNA 12000 Series II.xsy

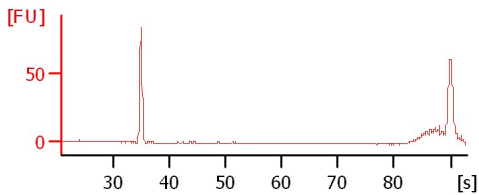
Assay Class: DNA 12000
Version: 2.4
Assay Comments: DNA Analysis 100 -12000 bp

© Copyright 2003-2009 Agilent Technologies, Inc.

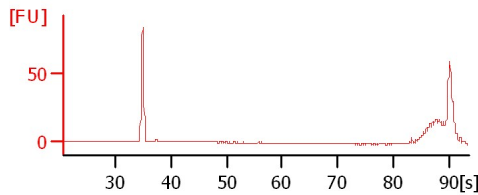
Chip Information:

Chip Lot #:
Reagent Kit Lot #:
Chip Comments:

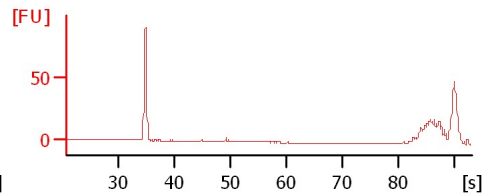
S_sho gTube (1:2)



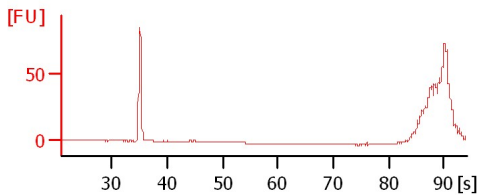
T_ani gTube (1:2)



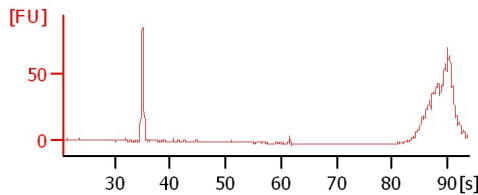
Arhi gTube (1:2)



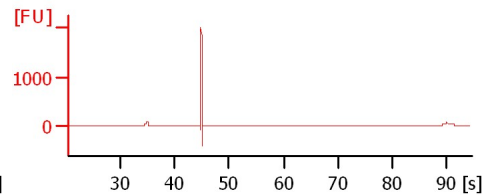
S_my1 gTube (1:2)



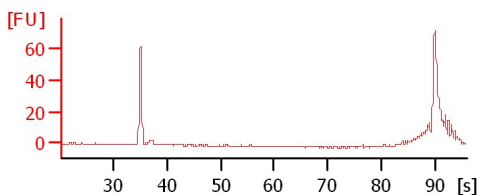
S_my2 gTube (1:2)



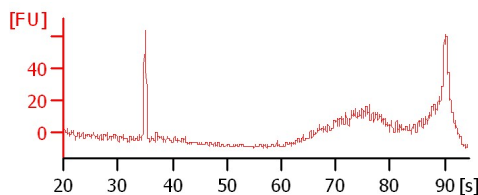
S_my1 gDNA (1:3)



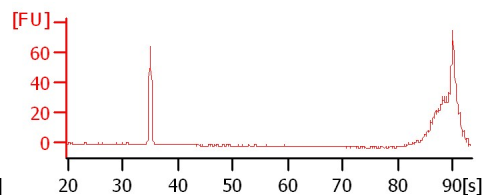
S_my2 gDNA (1:3)



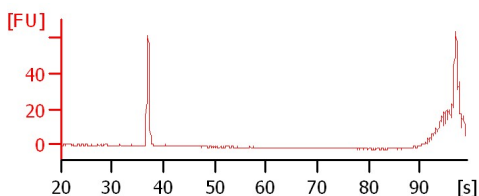
JA17 PB Lib (1:3)



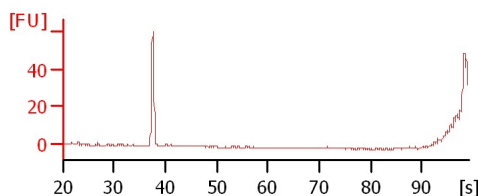
JA123 PB Lib (1:3)



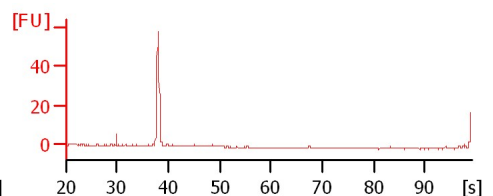
JA62 PB Lib (1:3)



JA65 PB Lib (1:3)



S-sho ph-chl (1:3)



Assay Class: DNA 12000
Data Path: C:\...ents and Settings\Bioanalyzer\2013-12-12\2013-12-12_001.xad

Created: 12/12/2013 9:17:25 AM
Modified: 12/12/2013 10:00:55 AM

Electrophoresis File Run Summary (Chip Summary)

Sample Name	Sample Comment	Rest. Digest	Status	Observation	Result Label	Result Color
S_sho gTube (1:2)		<input type="checkbox"/>	✓			
T_ani gTube (1:2)		<input type="checkbox"/>	✓			
Arhi gTube (1:2)		<input type="checkbox"/>	✓			
S_my1 gTube (1:2)		<input type="checkbox"/>	✓			
S_my2 gTube (1:2)		<input type="checkbox"/>	✓			
S_my1 gDNA (1:3)		<input type="checkbox"/>	✓			
S_my2 gDNA (1:3)		<input type="checkbox"/>	✓			
JA17 PB Lib (1:3)		<input type="checkbox"/>	✓			
JA123 PB Lib (1:3)		<input type="checkbox"/>	✓			
JA62 PB Lib (1:3)		<input type="checkbox"/>	✓			
JA65 PB Lib (1:3)		<input type="checkbox"/>	✓			
S-sho ph-chl (1:3)		<input type="checkbox"/>	✓			
Ladder		<input type="checkbox"/>	✓			

Chip Lot # **Reagent Kit Lot #**

Chip Comments :

Assay Class: DNA 12000
Data Path: C:\...ents and Settings\Bioanalyzer\2013-12-12\2013-12-12_001.xad

Created: 12/12/2013 9:17:25 AM
Modified: 12/12/2013 10:00:55 AM

Electrophoresis Assay Details

General Analysis Settings

Number of Available Sample and Ladder Wells (Max.) : 13
Minimum Visible Range [s] : 20
Maximum Visible Range [s] : 99
Start Analysis Time Range [s] : 20
End Analysis Time Range [s] : 98.95
Ladder Concentration [ng/μl] : 44
Uses Standard Area for Ladder Fragments
Lower Marker Concentration [ng/μl] : 8.3
Upper Marker Concentration [ng/μl] : 4.2
Used Upper Marker for Quantitation
This is a Qualitative Assay Only
Standard Curve Fit is Point to Point
Show Data Aligned to Lower and Upper Marker

Integrator Settings

Integration Start Time [s] : 20
Integration End Time [s] : 98.95
Slope Threshold : 0.8
Height Threshold [FU] : 20
Area Threshold : 0.1
Width Threshold [s] : 0.5
Baseline Plateau [s] : 0.5

Filter Settings

Filter Width [s] : 0.5
Polynomial Order : 4

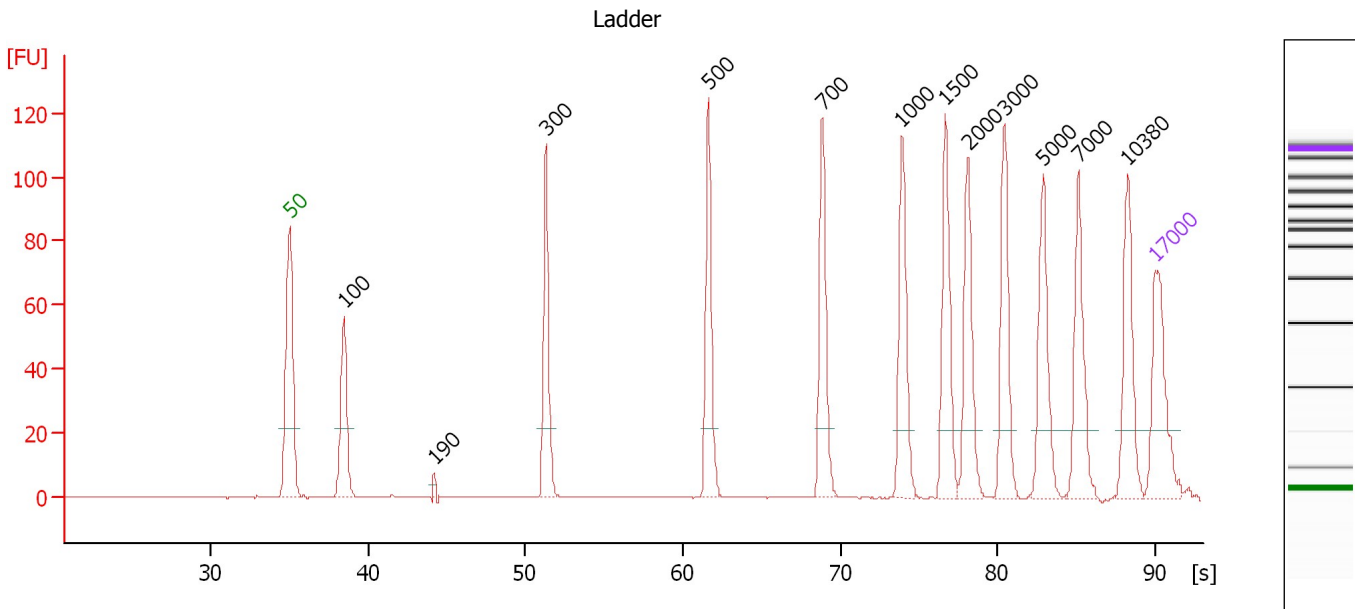
Ladder

Ladder Peak	Size	Area
1	50	120
2	100	48
3	300	61
4	500	77
5	700	81
6	1000	86
7	1500	92
8	2000	92
9	3000	96
10	5000	100
11	7000	98
12	10380	102
13	17000	110

Assay Class: DNA 12000
 Data Path: C:\...ents and Settings\Bioanalyzer\2013-12-12\2013-12-12_001.xad

Created: 12/12/2013 9:17:25 AM
 Modified: 12/12/2013 10:00:55 AM

Electropherogram Summary



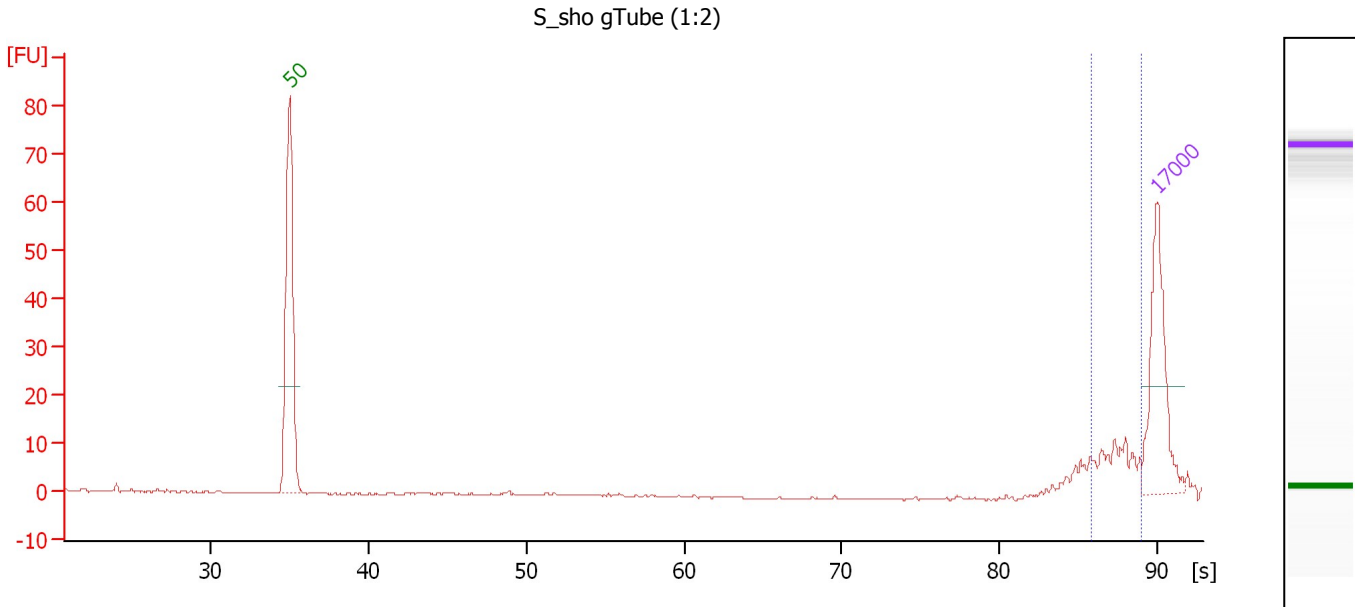
Peak table for Ladder

Peak	Size [bp]	Conc. [ng/μl]	Molarity [nmol/l]	Observations
1	50	8.30	251.5	Lower Marker
2	100	4.00	60.6	Ladder Peak
3	190	0.00	0.0	
4	300	4.00	20.2	Ladder Peak
5	500	4.00	12.1	Ladder Peak
6	700	4.00	8.7	Ladder Peak
7	1,000	4.00	6.1	Ladder Peak
8	1,500	4.00	4.0	Ladder Peak
9	2,000	4.00	3.0	Ladder Peak
10	3,000	4.00	2.0	Ladder Peak
11	5,000	4.00	1.2	Ladder Peak
12	7,000	4.00	0.9	Ladder Peak
13	10,380	4.00	0.6	Ladder Peak
14	17,000	4.20	0.4	Upper Marker

Assay Class: DNA 12000
 Data Path: C:\...ents and Settings\Bioanalyzer\2013-12-12\2013-12-12_001.xad

Created: 12/12/2013 9:17:25 AM
 Modified: 12/12/2013 10:00:55 AM

Electropherogram Summary Continued ...



Overall Results for sample 1 : S_sho gTube (1:2)

Number of peaks found: 0 Area 1: 26.2

Peak table for sample 1 : S_sho gTube (1:2)

Peak	Size [bp]	Conc. [ng/μl]	Molarity [nmol/l]	Observations
1	50	8.30	251.5	Lower Marker
2	17,000	4.20	0.4	Upper Marker

Region table for sample 1 : S_sho gTube (1:2)

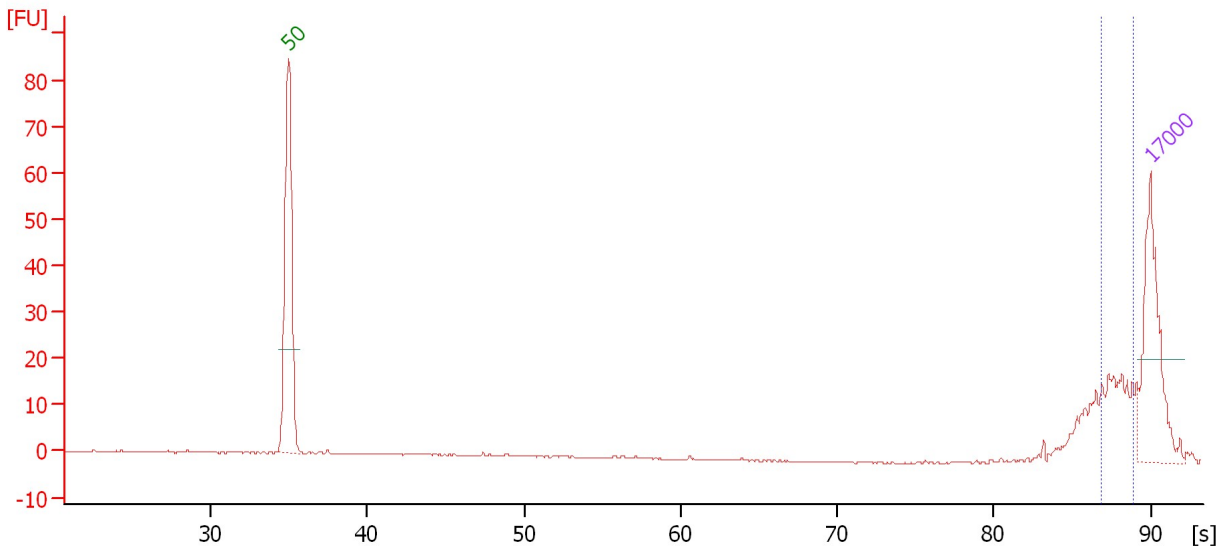
From [bp]	To [bp]	Average Size [bp]	Conc. [ng/μl]	Area	Col Size distribution in CV or [%]	% of Total
7,750	12,728	9,481	1.65	26.2	11.9	65

Assay Class: DNA 12000
 Data Path: C:\...ents and Settings\Bioanalyzer\2013-12-12\2013-12-12_001.xad

Created: 12/12/2013 9:17:25 AM
 Modified: 12/12/2013 10:00:55 AM

Electropherogram Summary Continued ...

T_ani gTube (1:2)



Overall Results for sample 2 : T_ani gTube (1:2)

Number of peaks found: 0 Area 1: 36.5

Peak table for sample 2 : T_ani gTube (1:2)

Peak	Size [bp]	Conc. [ng/μl]	Molarity [nmol/l]	Observations
1	50	8.30	251.5	Lower Marker
2	17,000	4.20	0.4	Upper Marker

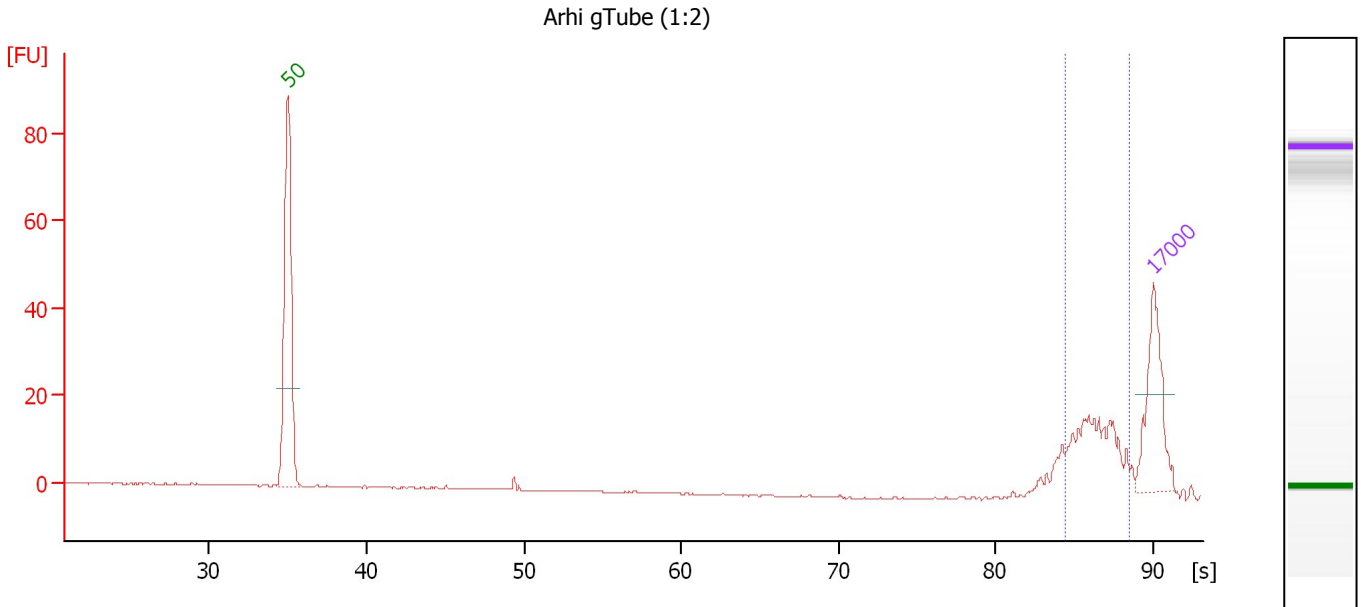
Region table for sample 2 : T_ani gTube (1:2)

From [bp]	To [bp]	Average Size [bp]	Conc. [ng/μl]	Area	Col Size distribution in CV or [%]	% of Total
8,766	12,628	10,044	2.09	36.5	9.9	55

Assay Class: DNA 12000
 Data Path: C:\...ents and Settings\Bioanalyzer\2013-12-12\2013-12-12_001.xad

Created: 12/12/2013 9:17:25 AM
 Modified: 12/12/2013 10:00:55 AM

Electropherogram Summary Continued ...



Overall Results for sample 3 : Arhi gTube (1:2)

Number of peaks found: 0 Area 1: 61.3

Peak table for sample 3 : Arhi gTube (1:2)

Peak	Size [bp]	Conc. [ng/μl]	Molarity [nmol/l]	Observations
1	50	8.30	251.5	Lower Marker
2	17,000	4.20	0.4	Upper Marker

Region table for sample 3 : Arhi gTube (1:2)

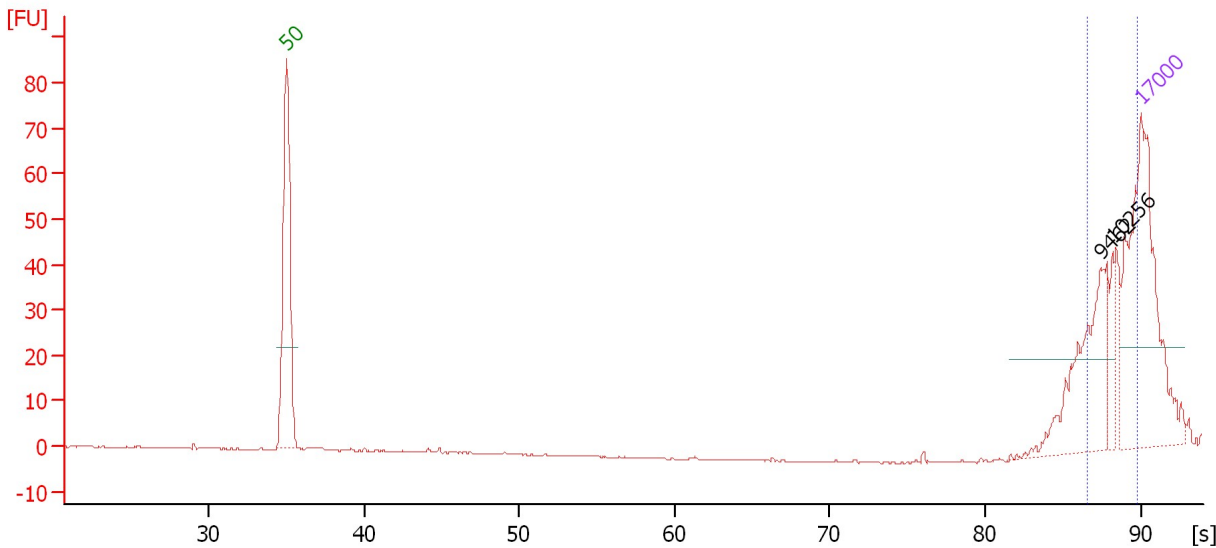
From [bp]	To [bp]	Average Size [bp]	Conc. [ng/μl]	Area	Col Size distribution in CV or [%]	% of Total
6,354	10,917	8,270	4.76	61.3	13.8	78

Assay Class: DNA 12000
 Data Path: C:\...ents and Settings\Bioanalyzer\2013-12-12\2013-12-12_001.xad

Created: 12/12/2013 9:17:25 AM
 Modified: 12/12/2013 10:00:55 AM

Electropherogram Summary Continued ...

S_my1 gTube (1:2)



Overall Results for sample 4 : S_my1 gTube (1:2)

Number of peaks found: 2 Area: 76.3

Peak table for sample 4 : S_my1 gTube (1:2)

Peak	Size [bp]	Conc. [ng/μl]	Molarity [nmol/l]	Observations
1	50	8.30	251.5	Lower Marker
2	9,462	2.58	0.4	
3	10,256	0.59	0.1	
4	17,000	4.20	0.4	Upper Marker

Region table for sample 4 : S_my1 gTube (1:2)

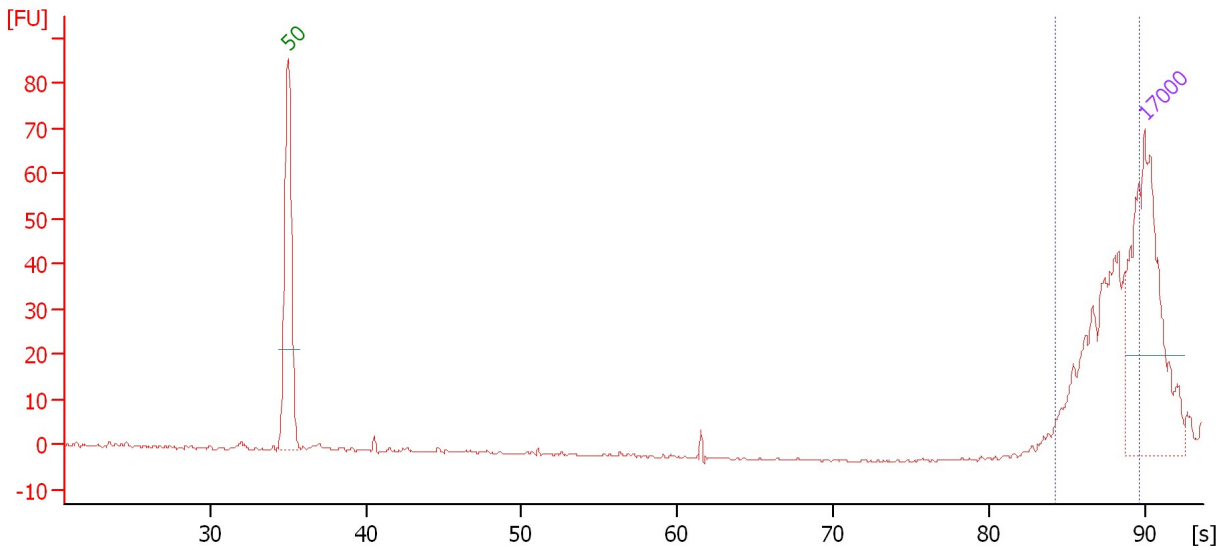
From [bp]	To [bp]	Average Size [bp]	Conc. [ng/μl]	Area	Col Size distribution in CV or [%]	% of Total
8,585	16,154	11,507	2.04	76.3	19.9	69

Assay Class: DNA 12000
 Data Path: C:\...ents and Settings\Bioanalyzer\2013-12-12\2013-12-12_001.xad

Created: 12/12/2013 9:17:25 AM
 Modified: 12/12/2013 10:00:55 AM

Electropherogram Summary Continued ...

S_my2 gTube (1:2)



Overall Results for sample 5 : S_my2 gTube (1:2)

Number of peaks found: 0 Area 1: 102.2

Peak table for sample 5 : S_my2 gTube (1:2)

Peak	Size [bp]	Conc. [ng/μl]	Molarity [nmol/l]	Observations
1	50	8.30	251.5	Lower Marker
2	17,000	4.20	0.4	Upper Marker

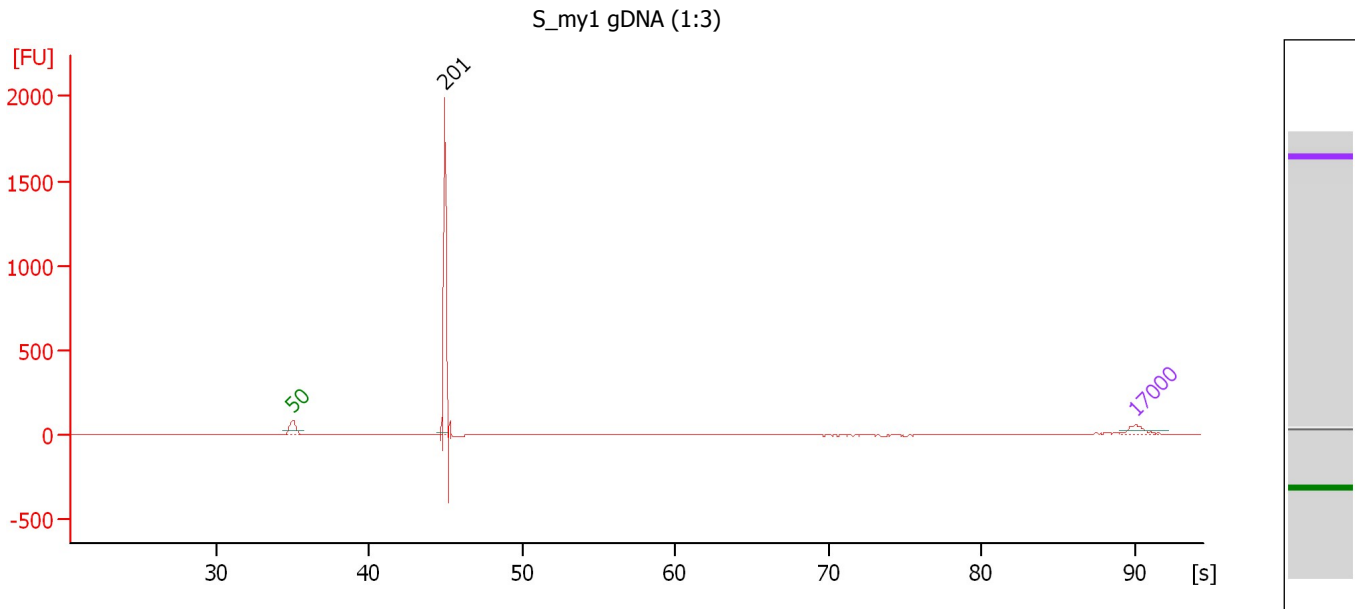
Region table for sample 5 : S_my2 gTube (1:2)

From [bp]	To [bp]	Average Size [bp]	Conc. [ng/μl]	Area	Col Size distribution in CV or [%]	% of Total
6,214	15,584	10,549	2.76	102.2	22.8	98

Assay Class: DNA 12000
 Data Path: C:\...ents and Settings\Bioanalyzer\2013-12-12\2013-12-12_001.xad

Created: 12/12/2013 9:17:25 AM
 Modified: 12/12/2013 10:00:55 AM

Electropherogram Summary Continued ...



Overall Results for sample 6 : S_my1 gDNA (1:3)

Number of peaks found: 1

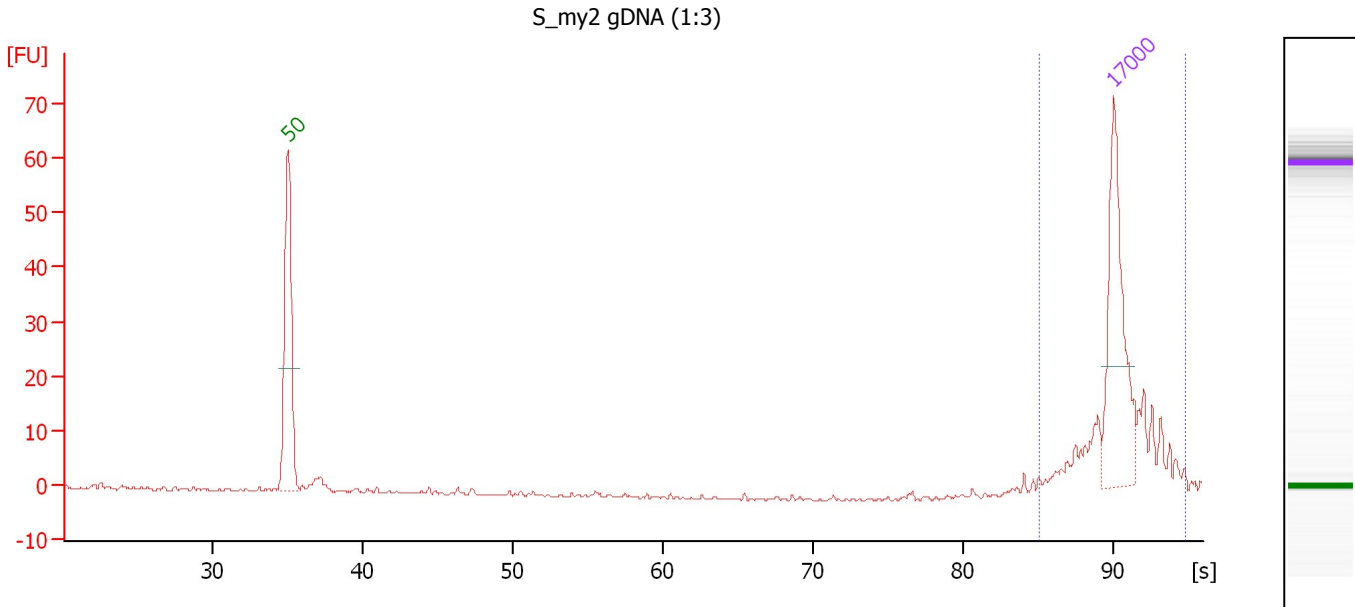
Peak table for sample 6 : S_my1 gDNA (1:3)

Peak	Size [bp]	Conc. [ng/μl]	Molarity [nmol/l]	Observations
1	50	8.30	251.5	Lower Marker
2	201	37.62	283.8	
3	17,000	4.20	0.4	Upper Marker

Assay Class: DNA 12000
 Data Path: C:\...ents and Settings\Bioanalyzer\2013-12-12\2013-12-12_001.xad

Created: 12/12/2013 9:17:25 AM
 Modified: 12/12/2013 10:00:55 AM

Electropherogram Summary Continued ...



Overall Results for sample 7 : S_my2 gDNA (1:3)

Number of peaks found: 0 Area 1: 42.0

Peak table for sample 7 : S_my2 gDNA (1:3)

Peak	Size [bp]	Conc. [ng/μl]	Molarity [nmol/l]	Observations
1	50	8.30	251.5	Lower Marker
2	17,000	4.20	0.4	Upper Marker

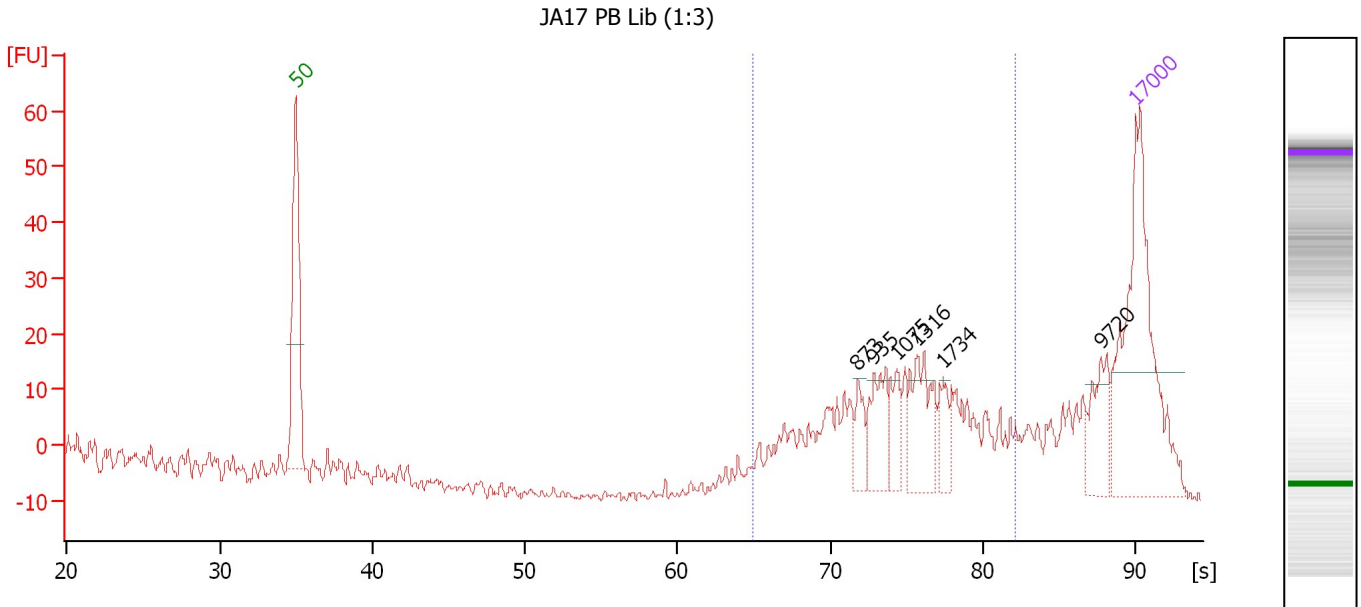
Region table for sample 7 : S_my2 gDNA (1:3)

From [bp]	To [bp]	Average Size [bp]	Conc. [ng/μl]	Area	Col Size distribution in CV or [%]	% of Total
6,892	35,813	18,691	2.14	42.0	28.7	96

Assay Class: DNA 12000
 Data Path: C:\...ents and Settings\Bioanalyzer\2013-12-12\2013-12-12_001.xad

Created: 12/12/2013 9:17:25 AM
 Modified: 12/12/2013 10:00:55 AM

Electropherogram Summary Continued ...



Overall Results for sample 8 : JA17 PB Lib (1:3)

Number of peaks found: 6 Area 1: 236.7

Peak table for sample 8 : JA17 PB Lib (1:3)

Peak	Size [bp]	Conc. [ng/μl]	Molarity [nmol/l]	Observations
1	50	8.30	251.5	Lower Marker
2	873	0.56	1.0	
3	935	1.04	1.7	
4	1,075	0.55	0.8	
5	1,316	1.35	1.6	
6	1,734	0.45	0.4	
7	9,720	1.03	0.2	
8	17,000	4.20	0.4	Upper Marker

Region table for sample 8 : JA17 PB Lib (1:3)

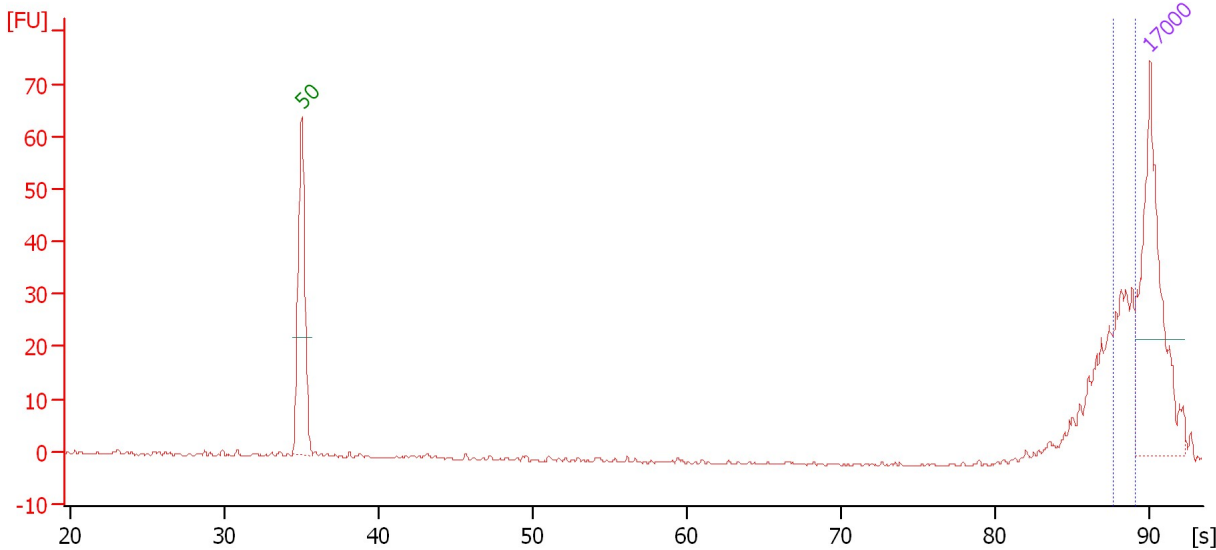
From [bp]	To [bp]	Average Size [bp]	Conc. [ng/μl]	Area	Col Size distribution in CV or [%]	% of Total
589	4,331	1,447	8.18	236.7	59.0	70

Assay Class: DNA 12000
 Data Path: C:\...ents and Settings\Bioanalyzer\2013-12-12\2013-12-12_001.xad

Created: 12/12/2013 9:17:25 AM
 Modified: 12/12/2013 10:00:55 AM

Electropherogram Summary Continued ...

JA123 PB Lib (1:3)



Overall Results for sample 9 : JA123 PB Lib (1:3)

Number of peaks found: 0 Area 1: 45.2

Peak table for sample 9 : JA123 PB Lib (1:3)

Peak	Size [bp]	Conc. [ng/μl]	Molarity [nmol/l]	Observations
1	50	8.30	251.5	Lower Marker
2	17,000	4.20	0.4	Upper Marker

Region table for sample 9 : JA123 PB Lib (1:3)

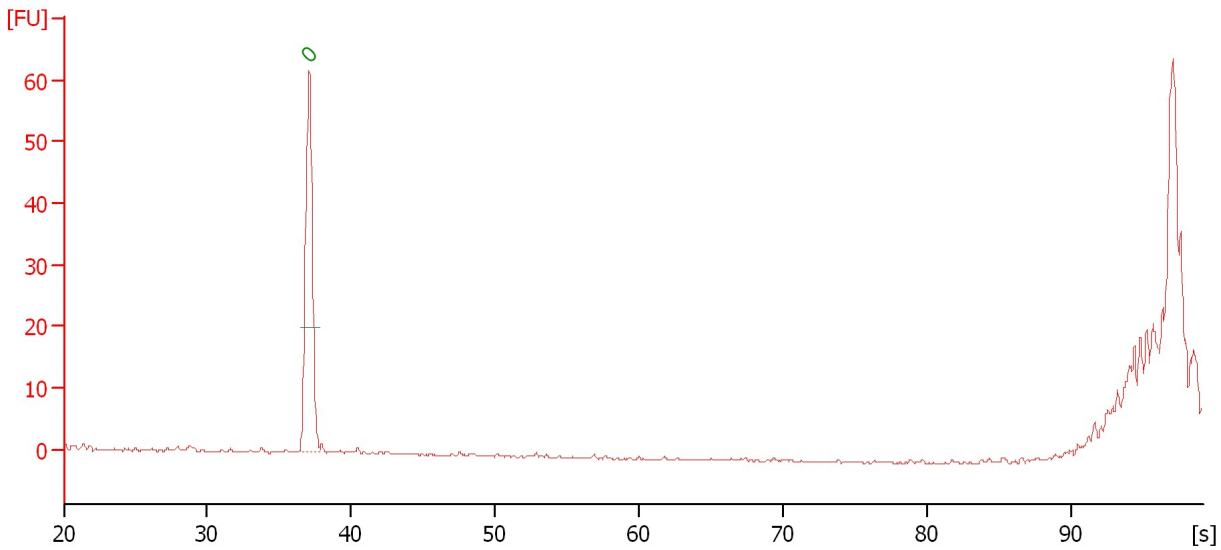
From [bp]	To [bp]	Average Size [bp]	Conc. [ng/μl]	Area	Col Size distribution in CV or [%]	% of Total
9,610	13,257	10,900	1.76	45.2	10.1	44

Assay Class: DNA 12000
Data Path: C:\...ents and Settings\Bioanalyzer\2013-12-12\2013-12-12_001.xad

Created: 12/12/2013 9:17:25 AM
Modified: 12/12/2013 10:00:55 AM

Electropherogram Summary Continued ...

JA62 PB Lib (1:3)



Overall Results for sample 10 : JA62 PB Lib (1:3)

Number of peaks found: 0

Peak table for sample 10 : JA62 PB Lib (1:3)

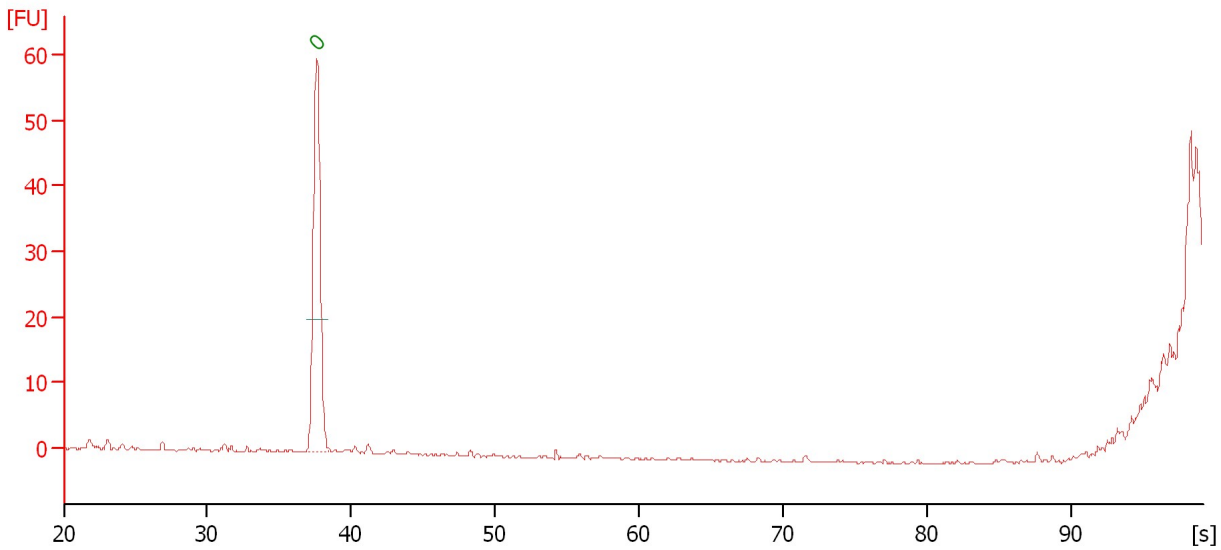
Peak	Size [bp]	Conc. [ng/μl]	Molarity [nmol/l]	Observations
1	0	0.00	0.0	Lower Marker

Assay Class: DNA 12000
Data Path: C:\...ents and Settings\Bioanalyzer\2013-12-12\2013-12-12_001.xad

Created: 12/12/2013 9:17:25 AM
Modified: 12/12/2013 10:00:55 AM

Electropherogram Summary Continued ...

JA65 PB Lib (1:3)



Overall Results for sample 11 : JA65 PB Lib (1:3)

Number of peaks found: 0

Peak table for sample 11 : JA65 PB Lib (1:3)

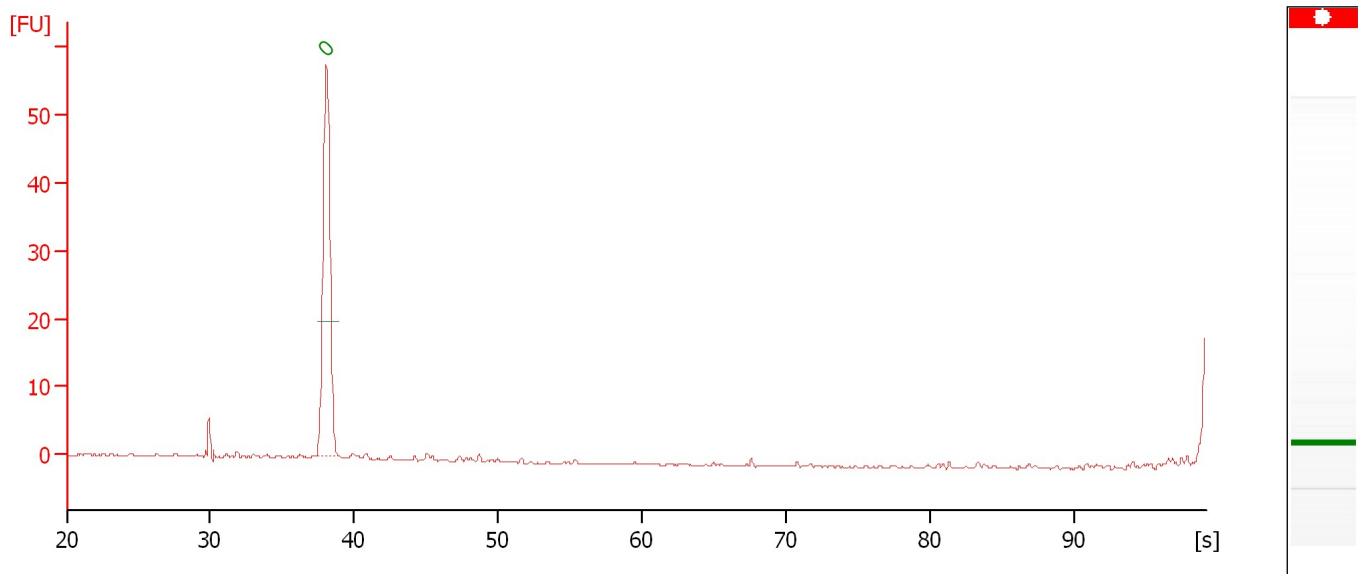
Peak	Size [bp]	Conc. [ng/μl]	Molarity [nmol/l]	Observations
1	0	0.00	0.0	Lower Marker

Assay Class: DNA 12000
 Data Path: C:\...ents and Settings\Bioanalyzer\2013-12-12\2013-12-12_001.xad

Created: 12/12/2013 9:17:25 AM
 Modified: 12/12/2013 10:00:55 AM

Electropherogram Summary Continued ...

S-sho ph-chl (1:3)



Overall Results for sample 12 : S-sho ph-chl (1:3)

Number of peaks found: 0

Peak table for sample 12 : S-sho ph-chl (1:3)

Peak	Size [bp]	Conc. [ng/μl]	Molarity [nmol/l]	Observations
1	0	0.00	0.0	Lower Marker

Assay Class: DNA 12000
Data Path: C:\...ents and Settings\Bioanalyzer\2013-12-12\2013-12-12_001.xad

Created: 12/12/2013 9:17:25 AM
Modified: 12/12/2013 10:00:55 AM

Gel Image

