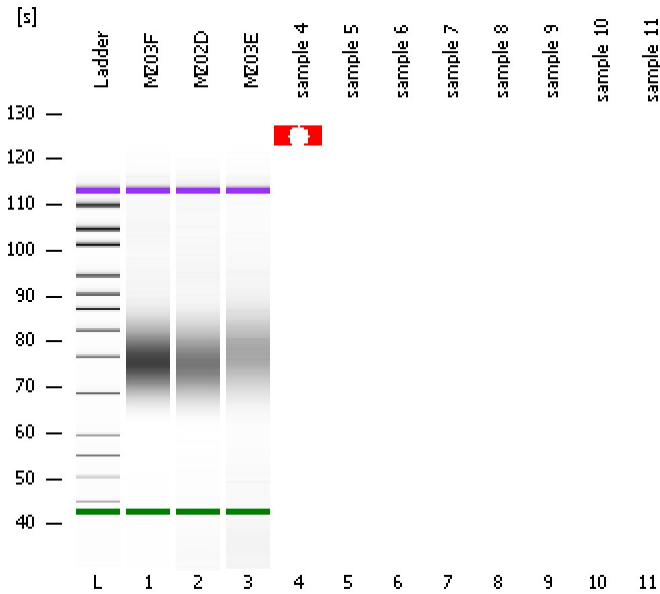


Assay Class: High Sensitivity DNA Assay
Data Path: C:\...ents and Settings\Bioanalyzer\2013-12-12\2013-12-12_003.xad

Created: 12/12/2013 1:03:25 PM
Modified: 12/12/2013 1:22:15 PM

Electrophoresis File Run Summary



Instrument Information:

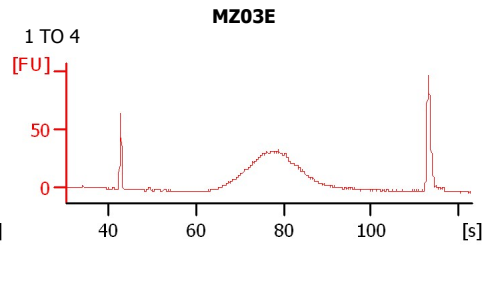
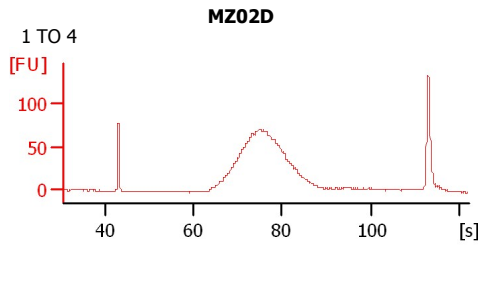
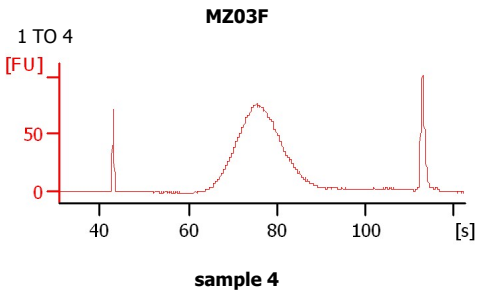
Instrument Name: DE13701086 Firmware: C.01.069
Serial#: DE13701086 Type: G2938B

Assay Information:

Assay Origin Path: C:\Program Files\Agilent\2100 bioanalyzer\2100 expert\assays\dsDNA\High Sensitivity DNA.xsy
Assay Class: High Sensitivity DNA Assay
Version: 1.03
Assay Comments: Copyright © 2003-2010 Agilent Technologies

Chip Information:

Chip Lot #:
Reagent Kit Lot #:
Chip Comments:



Assay Class: High Sensitivity DNA Assay
 Data Path: C:\...ents and Settings\Bioanalyzer\2013-12-12\2013-12-12_003.xad

Created: 12/12/2013 1:03:25 PM
 Modified: 12/12/2013 1:22:15 PM

Electrophoresis File Run Summary (Chip Summary)

Sample Name	Sample Comment	Rest. Digest	Status	Observation	Result Label	Result Color
MZ03F	1 TO 4	<input type="checkbox"/>	✓			
MZ02D	1 TO 4	<input type="checkbox"/>	✓			
MZ03E	1 TO 4	<input type="checkbox"/>	✓			
sample 4		<input type="checkbox"/>	✗			
sample 5		<input type="checkbox"/>	✗			
sample 6		<input type="checkbox"/>	✗			
sample 7		<input type="checkbox"/>	✗			
sample 8		<input type="checkbox"/>	✗			
sample 9		<input type="checkbox"/>	✗			
sample 10		<input type="checkbox"/>	✗			
sample 11		<input type="checkbox"/>	✗			
Ladder		<input type="checkbox"/>	✓			

Chip Lot #

Reagent Kit Lot #

Chip Comments :

Assay Class: High Sensitivity DNA Assay
Data Path: C:\...ents and Settings\Bioanalyzer\2013-12-12\2013-12-12_003.xad

Created: 12/12/2013 1:03:25 PM
Modified: 12/12/2013 1:22:15 PM

Electrophoresis Assay Details

General Analysis Settings

Number of Available Sample and Ladder Wells (Max.) : 12
Minimum Visible Range [s] : 32
Maximum Visible Range [s] : 138
Start Analysis Time Range [s] : 33
End Analysis Time Range [s] : 137.5
Ladder Concentration [pg/μl] : 1950
Uses Standard Area for Ladder Fragments
Lower Marker Concentration [pg/μl] : 125
Upper Marker Concentration [pg/μl] : 75
Used Upper Marker for Quantitation
Standard Curve Fit is Point to Point
Show Data Aligned to Lower and Upper Marker

Integrator Settings

Integration Start Time [s] : 33.05
Integration End Time [s] : 137
Slope Threshold : 0.8
Height Threshold [FU] : 5
Area Threshold : 0.1
Width Threshold [s] : 0.6
Baseline Plateau [s] : 0.5

Filter Settings

Filter Width [s] : 0.5
Polynomial Order : 4

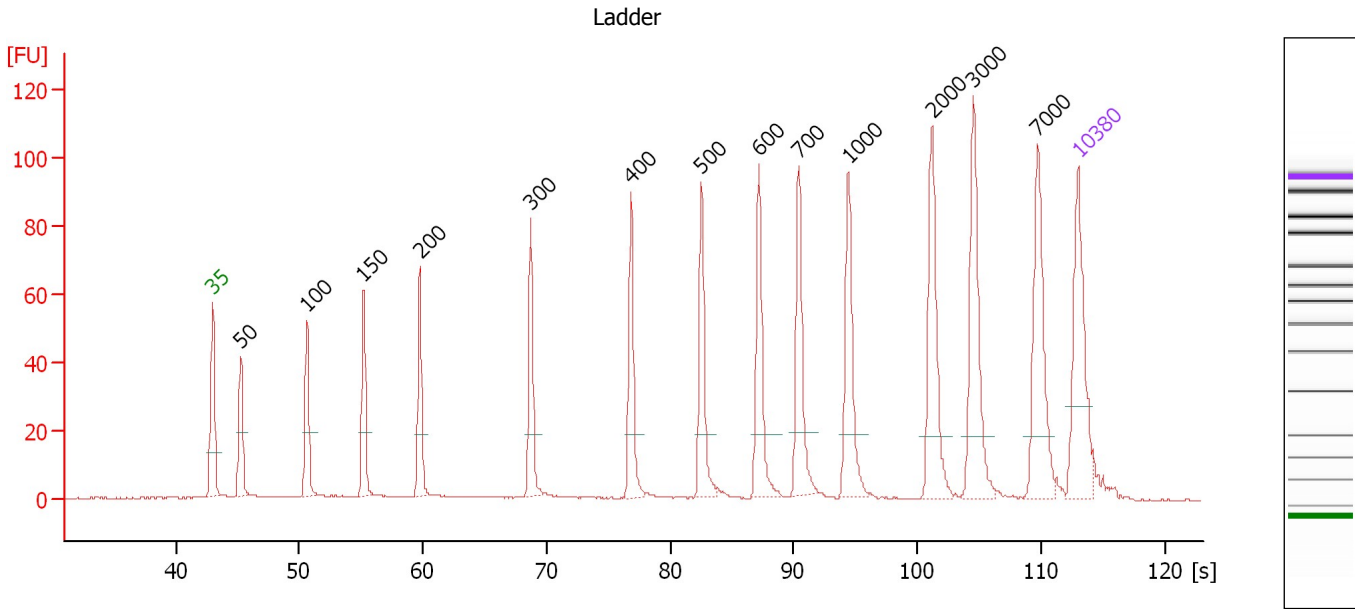
Ladder

Ladder Peak	Size	Area
1	35	160
2	50	210
3	100	208
4	150	221
5	200	242
6	300	270
7	400	305
8	500	306
9	600	336
10	700	321
11	1000	366
12	2000	413
13	3000	411
14	7000	400
15	10380	214

Assay Class: High Sensitivity DNA Assay
 Data Path: C:\...ents and Settings\Bioanalyzer\2013-12-12\2013-12-12_003.xad

Created: 12/12/2013 1:03:25 PM
 Modified: 12/12/2013 1:22:15 PM

Electropherogram Summary



Overall Results for Ladder

Noise: 0.1

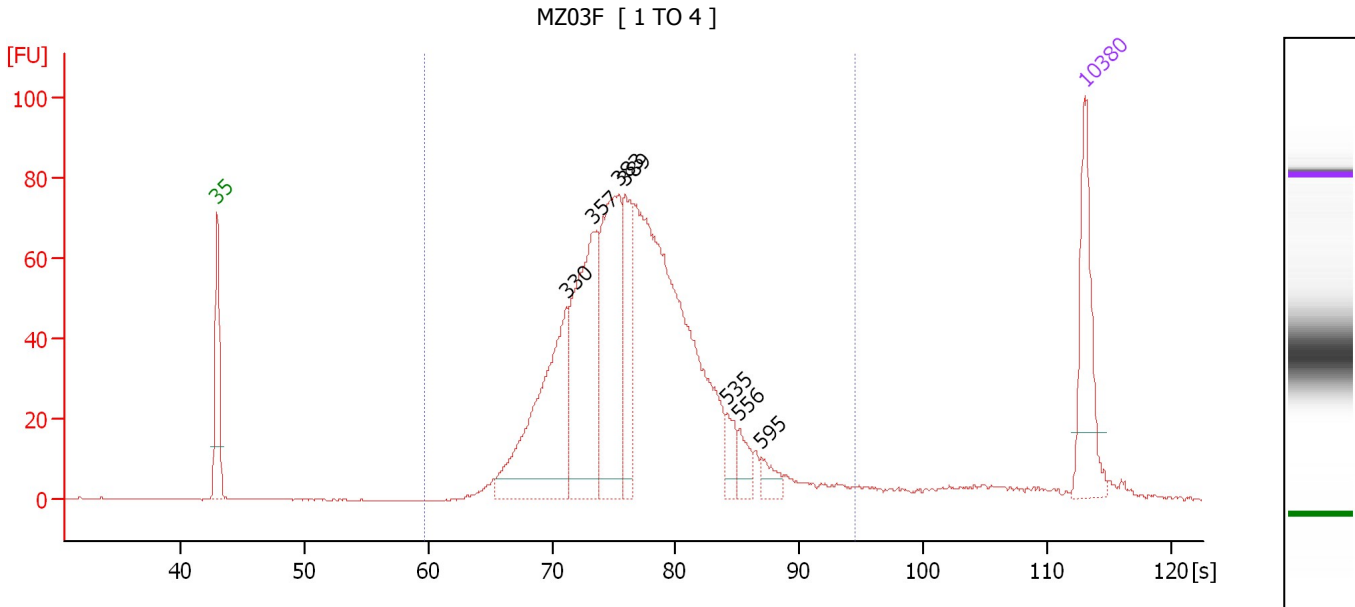
Peak table for Ladder

Peak	Aligned Migration Time [s]	Size [bp]	Conc. [pg/μl]	Molarity [pmol/l]	Observations
1	43.00	35	125.00	5,411.3	Lower Marker
2	45.30	50	150.00	4,545.5	Ladder Peak
3	50.64	100	150.00	2,272.7	Ladder Peak
4	55.20	150	150.00	1,515.2	Ladder Peak
5	59.76	200	150.00	1,136.4	Ladder Peak
6	68.71	300	150.00	757.6	Ladder Peak
7	76.83	400	150.00	568.2	Ladder Peak
8	82.52	500	150.00	454.5	Ladder Peak
9	87.16	600	150.00	378.8	Ladder Peak
10	90.42	700	150.00	324.7	Ladder Peak
11	94.41	1,000	150.00	227.3	Ladder Peak
12	101.19	2,000	150.00	113.6	Ladder Peak
13	104.53	3,000	150.00	75.8	Ladder Peak
14	109.70	7,000	150.00	32.5	Ladder Peak
15	113.00	10,380	75.00	10.9	Upper Marker

Assay Class: High Sensitivity DNA Assay
 Data Path: C:\...ents and Settings\Bioanalyzer\2013-12-12\2013-12-12_003.xad

Created: 12/12/2013 1:03:25 PM
 Modified: 12/12/2013 1:22:15 PM

Electropherogram Summary Continued ...



Overall Results for sample 1 : MZ03F

Number of peaks found: 7 Corr. Area 1: 1,259.9
 Noise: 0.1

Peak table for sample 1 : MZ03F

Peak	Aligned Migration Time [s]	Size [bp]	Conc. [pg/μl]	Molarity [pmol/l]	Observations
1	43.00	35	125.00	5,411.3	Lower Marker
2	71.13	330	237.52	1,091.1	
3	73.34	357	228.54	969.8	
4	75.42	383	206.59	818.0	
5	75.94	389	91.78	357.4	
6	84.13	535	23.93	67.8	
7	85.13	556	22.14	60.3	
8	86.91	595	16.56	42.2	
9	113.00	10,380	75.00	10.9	Upper Marker

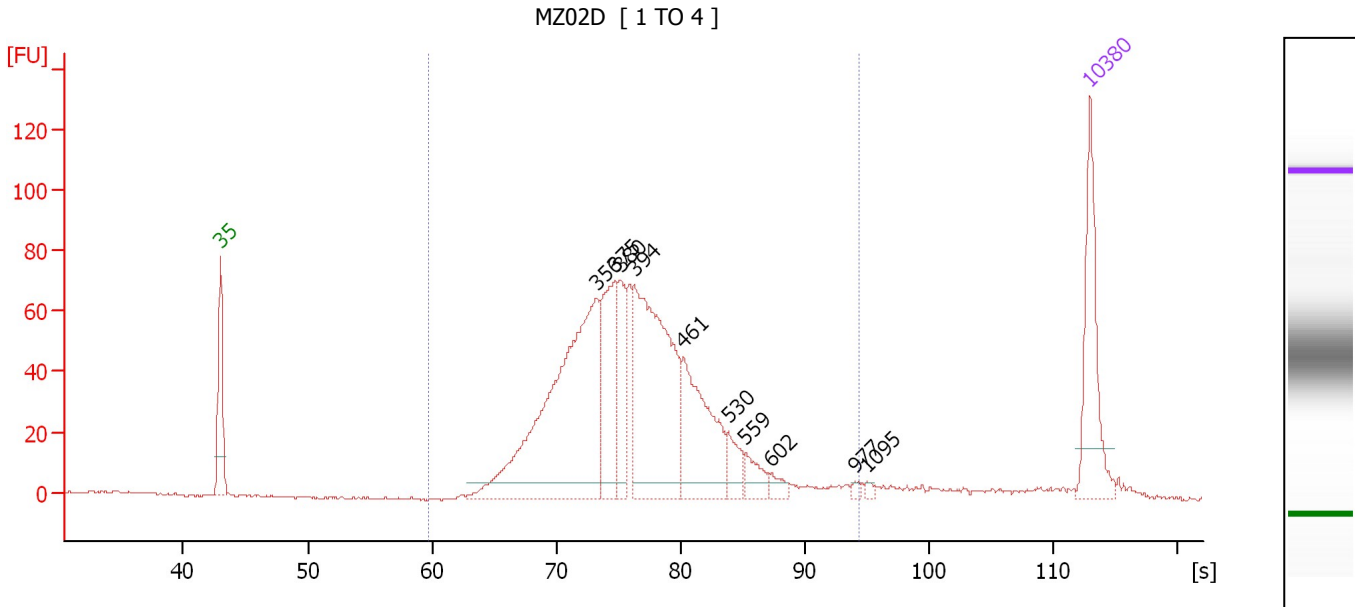
Region table for sample 1 : MZ03F

From [bp]	To [bp]	Average Size [bp]	Molarity [pmol/l]	Conc. [pg/μl]	Corr. Area	% of Total	Size distribution in CV [%]	Color
200	1,000	411	5,453.3	1,399.98	1,259.9	96	22.5	Blue

Assay Class: High Sensitivity DNA Assay
 Data Path: C:\...ents and Settings\Bioanalyzer\2013-12-12\2013-12-12_003.xad

Created: 12/12/2013 1:03:25 PM
 Modified: 12/12/2013 1:22:15 PM

Electropherogram Summary Continued ...



Overall Results for sample 2 : MZ02D

Number of peaks found: 10 Corr. Area 1: 1,219.2
 Noise: 0.5

Peak table for sample 2 : MZ02D

Peak	Aligned Migration Time [s]	Size [bp]	Conc. [pg/μl]	Molarity [pmol/l]	Observations
1	43.00	35	125.00	5,411.3	Lower Marker
2	73.22	356	392.34	1,671.7	
3	74.78	375	114.86	464.4	
4	75.17	380	63.98	255.4	
5	76.34	394	275.48	1,059.5	
6	80.27	461	131.49	432.6	
7	83.90	530	27.03	77.3	
8	85.24	559	22.15	60.1	
9	87.23	602	9.35	23.5	
10	94.11	977	3.77	5.9	
11	95.06	1,095	2.89	4.0	
12	113.00	10,380	75.00	10.9	Upper Marker

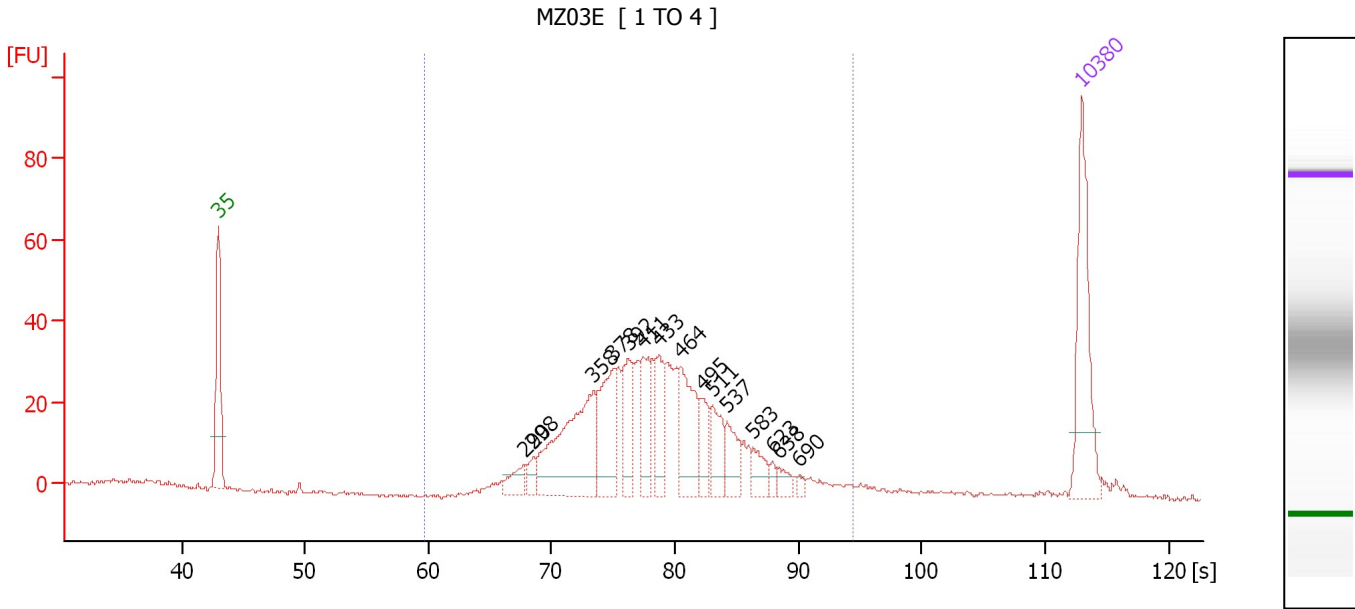
Region table for sample 2 : MZ02D

From [bp]	To [bp]	Average Size [bp]	Molarity [pmol/l]	Conc. [pg/μl]	Corr. Area	% of Total	Size distribution in CV [%]	Color
200	1,000	406	4,320.5	1,091.52	1,219.2	95	23.6	Blue

Assay Class: High Sensitivity DNA Assay
 Data Path: C:\...ents and Settings\Bioanalyzer\2013-12-12\2013-12-12_003.xad

Created: 12/12/2013 1:03:25 PM
 Modified: 12/12/2013 1:22:15 PM

Electropherogram Summary Continued ...



Overall Results for sample 3 : MZ03E

Number of peaks found: 15 Corr. Area 1: 600.4
 Noise: 0.4

Peak table for sample 3 : MZ03E

Peak	Aligned Migration Time [s]	Size [bp]	Conc. [pg/μl]	Molarity [pmol/l]	Observations
1	43.00	35	125.00	5,411.3	Lower Marker
2	67.81	290	20.48	107.0	
3	68.51	298	12.00	61.1	
4	73.39	358	143.00	605.8	
5	75.04	378	73.08	293.0	
6	76.22	392	47.15	182.0	
7	77.43	411	42.92	158.4	
8	78.70	433	42.01	147.1	
9	80.48	464	64.17	209.4	
10	82.22	495	29.26	89.6	
11	83.05	511	33.51	99.3	
12	84.23	537	29.17	82.3	
13	86.36	583	18.09	47.0	
14	87.93	623	5.66	13.8	
15	88.40	638	9.57	22.7	
16	90.10	690	4.27	9.4	
17	113.00	10,380	75.00	10.9	Upper Marker

Region table for sample 3 : MZ03E

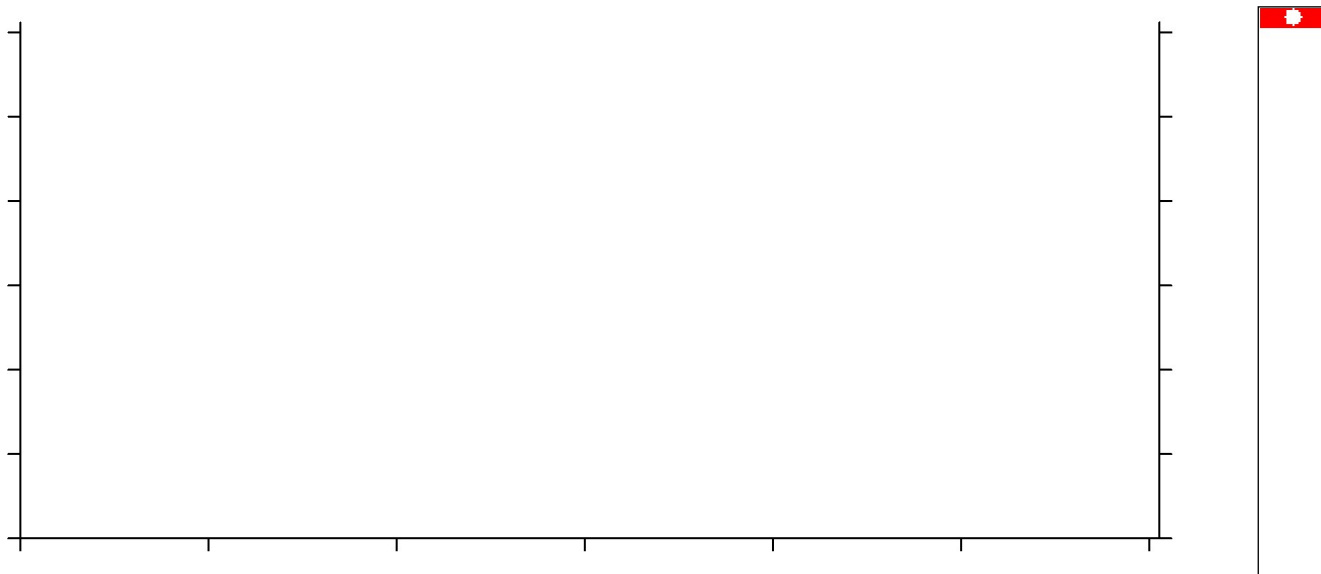
From [bp]	To [bp]	Average Size [bp]	Molarity [pmol/l]	Conc. [pg/μl]	Corr. Area	% of Total	Size distribution in CV [%]	Color
200	1,000	440	2,558.1	696.91	600.4	95	23.8	Blue

Assay Class: High Sensitivity DNA Assay
Data Path: C:\...ents and Settings\Bioanalyzer\2013-12-12\2013-12-12_003.xad

Created: 12/12/2013 1:03:25 PM
Modified: 12/12/2013 1:22:15 PM

Electropherogram Summary Continued ...

sample 4



Setpoint Deviations for sample 4 : sample 4

End Analysis Time Range [s] : 25.55

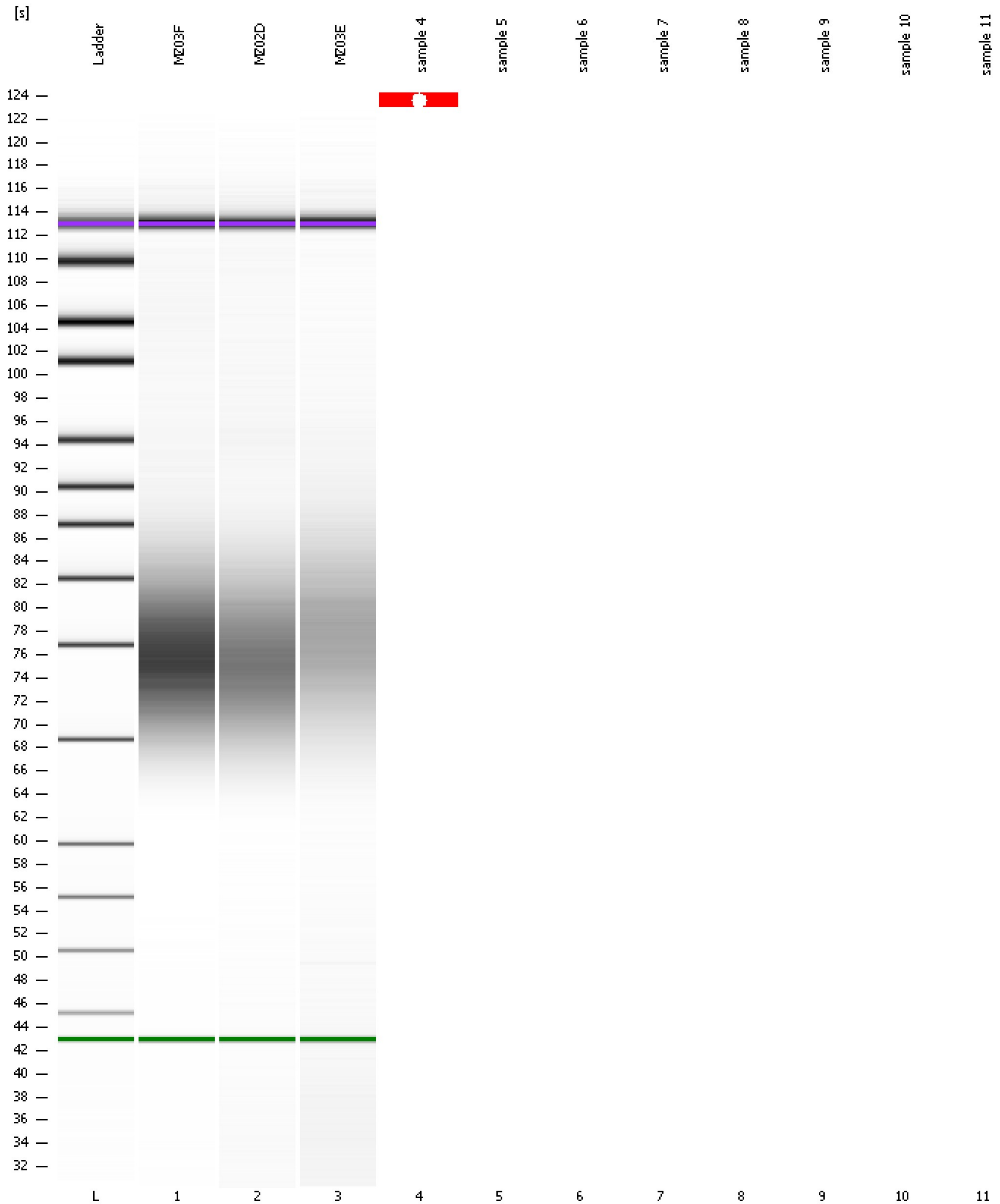
Overall Results for sample 4 : sample 4

Noise: 0.5

Assay Class: High Sensitivity DNA Assay
Data Path: C:\...ents and Settings\Bioanalyzer\2013-12-12\2013-12-12_003.xad

Created: 12/12/2013 1:03:25 PM
Modified: 12/12/2013 1:22:15 PM

Gel Image



Assay Class: High Sensitivity DNA Assay
Data Path: C:\...ents and Settings\Bioanalyzer\2013-12-12\2013-12-12_003.xad

Created: 12/12/2013 1:03:25 PM
Modified: 12/12/2013 1:22:15 PM

Invalid Samples

Sample 5 has not been run, no results available.

Sample 6 has not been run, no results available.

Sample 7 has not been run, no results available.

Sample 8 has not been run, no results available.

Sample 9 has not been run, no results available.

Sample 10 has not been run, no results available.

Sample 11 has not been run, no results available.