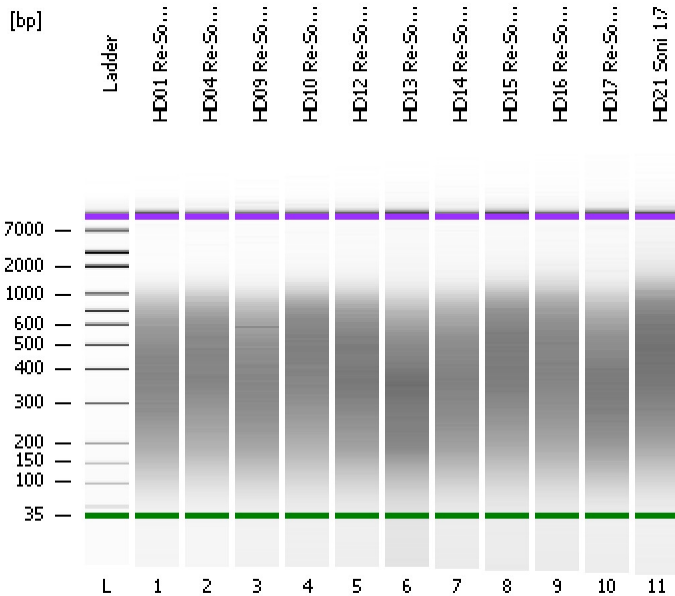


Assay Class: High Sensitivity DNA Assay  
Data Path: C:\...ents and Settings\Bioanalyzer\2013-12-12\2013-12-12\_004.xad

Created: 12/12/2013 1:59:00 PM  
Modified: 12/12/2013 2:45:00 PM

Electrophoresis File Run Summary



Instrument Information:

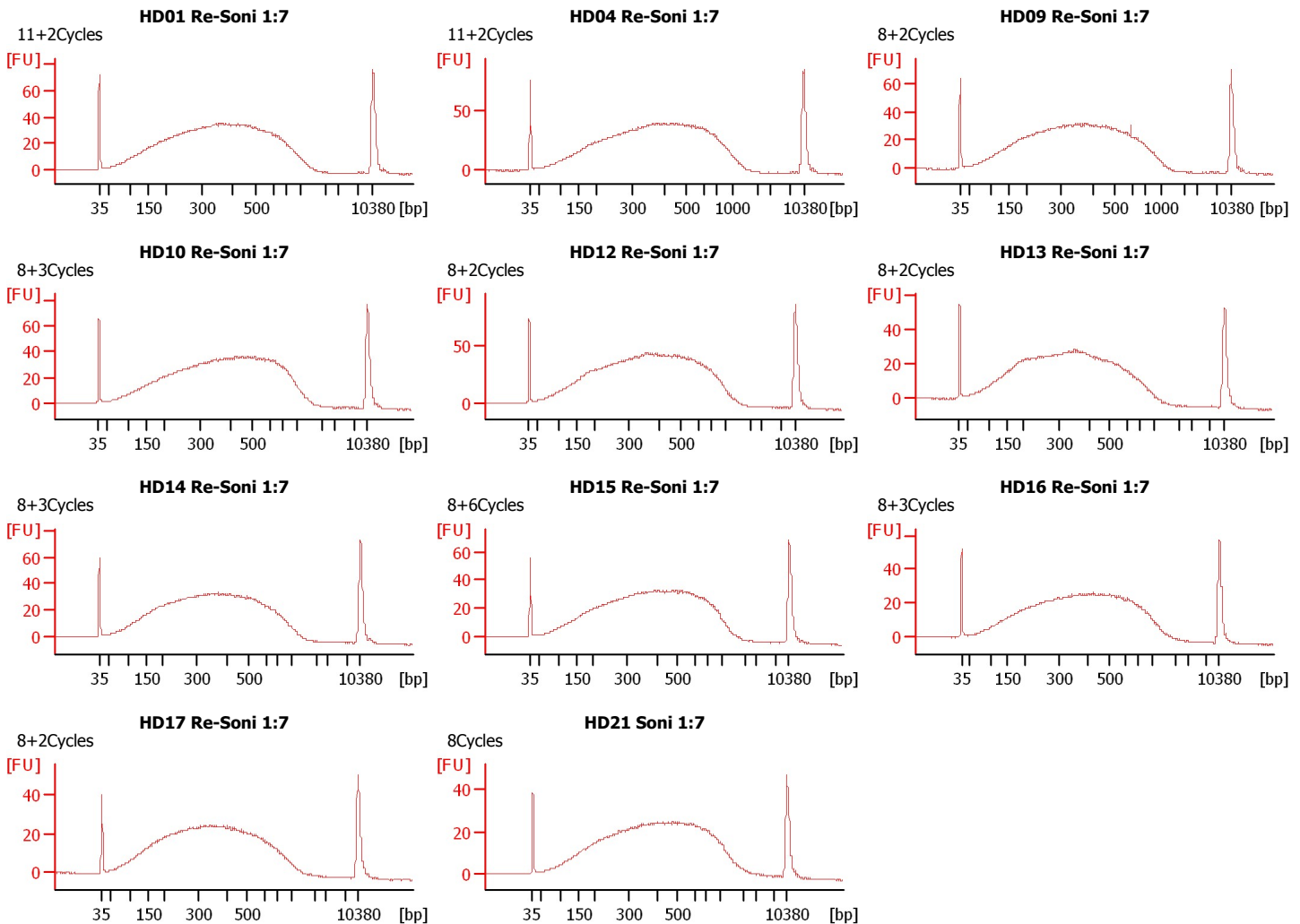
Instrument Name: DE13701086      Firmware: C.01.069  
Serial#: DE13701086      Type: G2938B

Assay Information:

Assay Origin Path: C:\Program Files\Agilent\2100 bioanalyzer\2100 expert\assays\dsDNA\High Sensitivity DNA.xsy  
Assay Class: High Sensitivity DNA Assay  
Version: 1.03  
Assay Comments: Copyright © 2003-2010 Agilent Technologies

Chip Information:

Chip Lot #:   
Reagent Kit Lot #:   
Chip Comments:



Assay Class: High Sensitivity DNA Assay  
 Data Path: C:\...ents and Settings\Bioanalyzer\2013-12-12\2013-12-12\_004.xad

Created: 12/12/2013 1:59:00 PM  
 Modified: 12/12/2013 2:45:00 PM

**Electrophoresis File Run Summary (Chip Summary)**

Sample Name	Sample Comment	Rest. Digest	Status	Observation	Result Label	Result Color
HD01 Re-Soni 1:7	11+2Cycles	<input type="checkbox"/>	✓			
HD04 Re-Soni 1:7	11+2Cycles	<input type="checkbox"/>	✓			
HD09 Re-Soni 1:7	8+2Cycles	<input type="checkbox"/>	✓			
HD10 Re-Soni 1:7	8+3Cycles	<input type="checkbox"/>	✓			
HD12 Re-Soni 1:7	8+2Cycles	<input type="checkbox"/>	✓			
HD13 Re-Soni 1:7	8+2Cycles	<input type="checkbox"/>	✓			
HD14 Re-Soni 1:7	8+3Cycles	<input type="checkbox"/>	✓			
HD15 Re-Soni 1:7	8+6Cycles	<input type="checkbox"/>	✓			
HD16 Re-Soni 1:7	8+3Cycles	<input type="checkbox"/>	✓			
HD17 Re-Soni 1:7	8+2Cycles	<input type="checkbox"/>	✓			
HD21 Soni 1:7	8Cycles	<input type="checkbox"/>	✓			
Ladder		<input type="checkbox"/>	✓			

**Chip Lot #**

**Reagent Kit Lot #**

**Chip Comments :**

Assay Class: High Sensitivity DNA Assay  
Data Path: C:\...ents and Settings\Bioanalyzer\2013-12-12\2013-12-12\_004.xad

Created: 12/12/2013 1:59:00 PM  
Modified: 12/12/2013 2:45:00 PM

**Electrophoresis Assay Details**

**General Analysis Settings**

Number of Available Sample and Ladder Wells (Max.) : 12  
Minimum Visible Range [s] : 32  
Maximum Visible Range [s] : 138  
Start Analysis Time Range [s] : 33  
End Analysis Time Range [s] : 137.5  
Ladder Concentration [pg/ $\mu$ l] : 1950  
Uses Standard Area for Ladder Fragments  
Lower Marker Concentration [pg/ $\mu$ l] : 125  
Upper Marker Concentration [pg/ $\mu$ l] : 75  
Used Upper Marker for Quantitation  
Standard Curve Fit is Point to Point  
Show Data Aligned to Lower and Upper Marker

**Integrator Settings**

Integration Start Time [s] : 33.05  
Integration End Time [s] : 137  
Slope Threshold : 0.8  
Height Threshold [FU] : 5  
Area Threshold : 0.1  
Width Threshold [s] : 0.6  
Baseline Plateau [s] : 0.5

**Filter Settings**

Filter Width [s] : 0.5  
Polynomial Order : 4

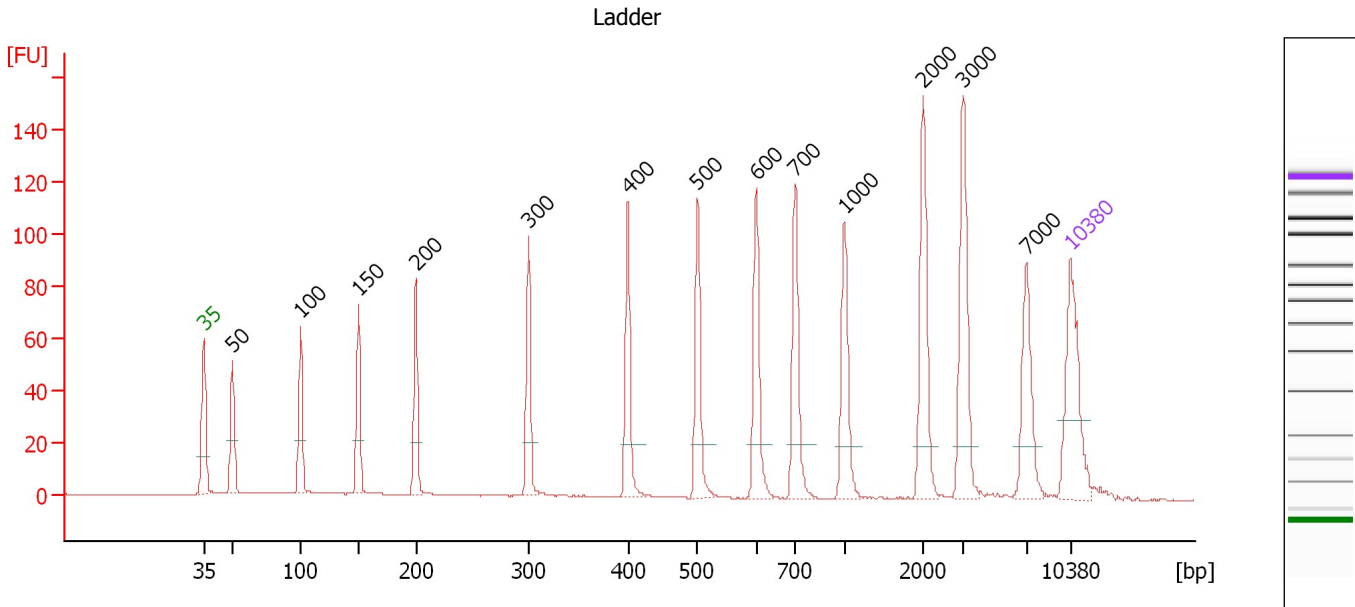
**Ladder**

Ladder Peak	Size	Area
1	35	160
2	50	210
3	100	208
4	150	221
5	200	242
6	300	270
7	400	305
8	500	306
9	600	336
10	700	321
11	1000	366
12	2000	413
13	3000	411
14	7000	400
15	10380	214

Assay Class: High Sensitivity DNA Assay  
 Data Path: C:\...ents and Settings\Bioanalyzer\2013-12-12\2013-12-12\_004.xad

Created: 12/12/2013 1:59:00 PM  
 Modified: 12/12/2013 2:45:00 PM

**Electropherogram Summary**



**Overall Results for Ladder**

Noise: 0.1

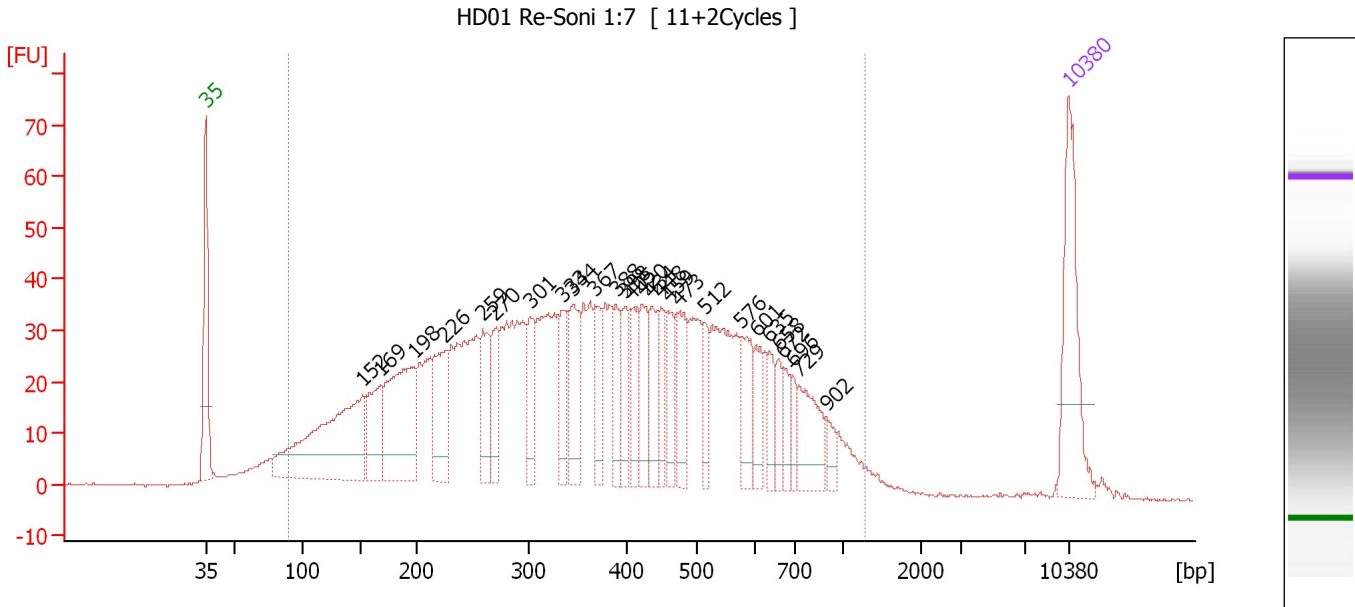
**Peak table for Ladder**

Peak	Aligned Migration Time [s]	Size [bp]	Conc. [pg/μl]	Molarity [pmol/l]	Observations
1	43.00	35	125.00	5,411.3	Lower Marker
2	45.28	50	150.00	4,545.5	Ladder Peak
3	50.80	100	150.00	2,272.7	Ladder Peak
4	55.49	150	150.00	1,515.2	Ladder Peak
5	60.10	200	150.00	1,136.4	Ladder Peak
6	69.23	300	150.00	757.6	Ladder Peak
7	77.25	400	150.00	568.2	Ladder Peak
8	82.89	500	150.00	454.5	Ladder Peak
9	87.63	600	150.00	378.8	Ladder Peak
10	90.77	700	150.00	324.7	Ladder Peak
11	94.74	1,000	150.00	227.3	Ladder Peak
12	101.11	2,000	150.00	113.6	Ladder Peak
13	104.30	3,000	150.00	75.8	Ladder Peak
14	109.42	7,000	150.00	32.5	Ladder Peak
15	113.00	10,380	75.00	10.9	Upper Marker

Assay Class: High Sensitivity DNA Assay  
 Data Path: C:\...ents and Settings\Bioanalyzer\2013-12-12\2013-12-12\_004.xad

Created: 12/12/2013 1:59:00 PM  
 Modified: 12/12/2013 2:45:00 PM

**Electropherogram Summary Continued ...**



**Overall Results for sample 1 : HD01 Re-Soni 1:7**

Number of peaks found: 27                      Corr. Area 1: 1,785.4  
 Noise: 0.2

**Peak table for sample 1 : HD01 Re-Soni 1:7**

Peak	Aligned Migration Time [s]	Size [bp]	Conc. [pg/μl]	Molarity [pmol/l]	Observations
1	43.00	35	125.00	5,411.3	Lower Marker
2	55.72	152	229.50	2,280.8	
3	57.23	169	62.28	558.7	
4	59.92	198	149.04	1,140.6	
5	62.47	226	82.45	553.0	
6	65.50	259	53.91	315.3	
7	66.49	270	42.57	238.9	
8	69.30	301	42.52	214.1	
9	71.90	333	46.64	212.0	
10	72.77	344	62.78	276.4	
11	74.58	367	39.37	162.7	
12	76.31	388	34.82	135.8	
13	77.05	398	31.60	120.5	
14	77.52	405	38.46	143.9	
15	78.39	420	38.35	138.3	
16	79.17	434	40.04	139.8	
17	79.95	448	30.26	102.4	
18	80.55	459	36.32	120.0	
19	81.37	473	39.94	127.9	
20	83.45	512	26.16	77.4	
21	86.48	576	43.46	114.4	
22	87.65	601	25.72	64.9	
23	88.73	635	20.24	48.3	
24	89.46	658	19.19	44.2	
25	89.90	672	16.81	37.9	

Assay Class: High Sensitivity DNA Assay  
 Data Path: C:\...ents and Settings\Bioanalyzer\2013-12-12\2013-12-12\_004.xad


Created: 12/12/2013 1:59:00 PM  
 Modified: 12/12/2013 2:45:00 PM

### Electropherogram Summary Continued ...

#### ... Peak table for sample 1 : HD01 Re-Soni 1:7

Peak	Aligned Migration Time [s]	Size [bp]	Conc. [pg/ $\mu$ l]	Molarity [pmol/l]	Observations
26	90.63	696	15.63	34.0	
27	91.15	729	50.13	104.2	
28	93.44	902	12.15	20.4	
29	▶ 113.00	10,380	75.00	10.9	Upper Marker

#### Region table for sample 1 : HD01 Re-Soni 1:7

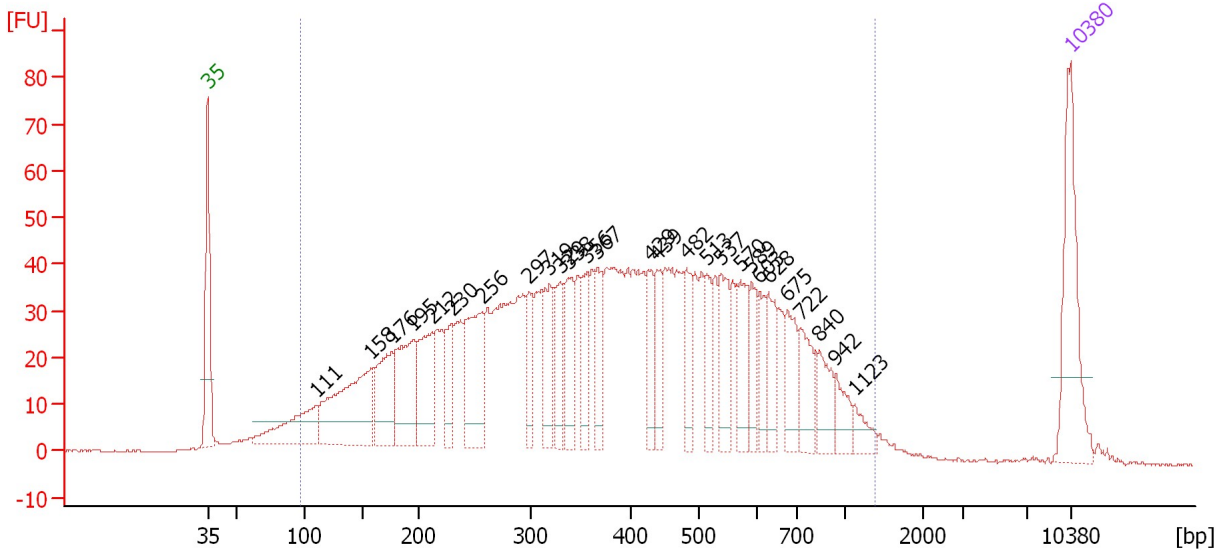
From [bp]	To [bp]	Average Size [bp]	Molarity [pmol/l]	Conc. [pg/ $\mu$ l]	Corr. Area	% of Total	Size distribution in CV [%]	Color
90	1,288	396	13,280.5	2,345.63	1,785.4	96	49.1	

Assay Class: High Sensitivity DNA Assay  
 Data Path: C:\...ents and Settings\Bioanalyzer\2013-12-12\2013-12-12\_004.xad

Created: 12/12/2013 1:59:00 PM  
 Modified: 12/12/2013 2:45:00 PM

**Electropherogram Summary Continued ...**

HD04 Re-Soni 1:7 [ 11+2Cycles ]



**Overall Results for sample 2 : HD04 Re-Soni 1:7**

Number of peaks found: 27                      Corr. Area 1: 1,947.9  
 Noise: 0.1

**Peak table for sample 2 : HD04 Re-Soni 1:7**

Peak	Aligned Migration Time [s]	Size [bp]	Conc. [pg/μl]	Molarity [pmol/l]	Observations
1	43.00	35	125.00	5,411.3	Lower Marker
2	51.83	111	81.08	1,107.2	
3	56.20	158	154.22	1,482.4	
4	57.93	176	78.57	674.9	
5	59.61	195	94.64	736.5	
6	61.21	212	74.18	529.7	
7	62.81	230	40.15	264.9	
8	65.24	256	96.41	570.1	
9	69.00	297	35.07	178.6	
10	70.73	319	53.07	252.3	
11	71.60	329	37.18	171.0	
12	72.29	338	53.53	239.9	
13	73.76	356	42.39	180.2	
14	74.63	367	34.45	142.1	
15	78.91	429	31.12	109.8	
16	79.47	439	38.04	131.2	
17	81.85	482	36.68	115.4	
18	83.49	513	30.32	89.6	
19	84.66	537	49.50	139.6	
20	86.22	570	40.01	106.3	
21	87.13	589	27.19	69.9	
22	87.73	603	25.67	64.5	
23	88.51	628	36.48	88.0	
24	89.98	675	36.78	82.6	
25	91.07	722	40.77	85.5	

Assay Class: High Sensitivity DNA Assay  
 Data Path: C:\...ents and Settings\Bioanalyzer\2013-12-12\2013-12-12\_004.xad


Created: 12/12/2013 1:59:00 PM  
 Modified: 12/12/2013 2:45:00 PM

### Electropherogram Summary Continued ...

#### ... Peak table for sample 2 : HD04 Re-Soni 1:7

Peak	Aligned Migration Time [s]	Size [bp]	Conc. [pg/μl]	Molarity [pmol/l]	Observations
26	92.62	840	29.09	52.5	
27	93.96	942	20.22	32.5	
28	95.52	1,123	13.63	18.4	
29	▶ 113.00	10,380	75.00	10.9	Upper Marker

#### Region table for sample 2 : HD04 Re-Soni 1:7

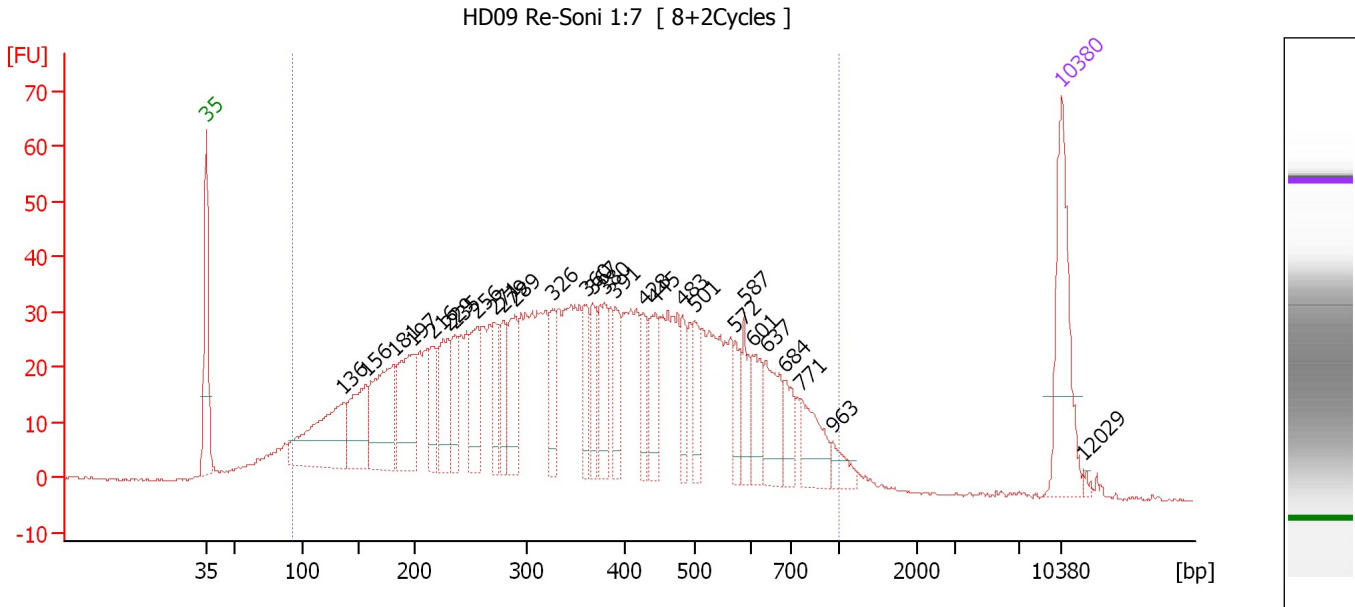
From [bp]	To [bp]	Average Size [bp]	Molarity [pmol/l]	Conc. [pg/μl]	Corr. Area	% of Total	Size distribution in CV [%]	Color
97	1,386	419	12,350.0	2,321.34	1,947.9	96	49.6	



Assay Class: High Sensitivity DNA Assay  
 Data Path: C:\...ents and Settings\Bioanalyzer\2013-12-12\2013-12-12\_004.xad

Created: 12/12/2013 1:59:00 PM  
 Modified: 12/12/2013 2:45:00 PM

**Electropherogram Summary Continued ...**



**Overall Results for sample 3 : HD09 Re-Soni 1:7**

Number of peaks found: 28                      Corr. Area 1: 1,610.3  
 Noise: 0.2

**Peak table for sample 3 : HD09 Re-Soni 1:7**

Peak	Aligned Migration Time [s]	Size [bp]	Conc. [pg/μl]	Molarity [pmol/l]	Observations
1	43.00	35	125.00	5,411.3	Lower Marker
2	54.21	136	137.11	1,523.8	
3	56.04	156	81.62	793.0	
4	58.35	181	118.24	989.7	
5	59.83	197	94.34	725.2	
6	61.54	216	38.74	272.1	
7	62.76	229	61.42	406.3	
8	63.32	235	37.11	238.9	
9	65.20	256	54.44	322.4	
10	66.55	271	40.72	228.0	
11	67.29	279	37.18	202.1	
12	68.25	289	57.25	299.9	
13	71.31	326	39.07	181.7	
14	74.05	360	34.46	145.0	
15	74.58	367	36.41	150.5	
16	75.62	380	48.59	193.9	
17	76.50	391	31.70	122.9	
18	78.81	428	31.89	113.0	
19	79.77	445	40.47	137.9	
20	81.95	483	27.63	86.6	
21	82.95	501	28.99	87.6	
22	86.31	572	22.63	59.9	
23	87.01	587	30.10	77.7	
24	87.66	601	29.80	75.1	
25	88.79	637	46.29	110.1	

Assay Class: High Sensitivity DNA Assay  
 Data Path: C:\...ents and Settings\Bioanalyzer\2013-12-12\2013-12-12\_004.xad


Created: 12/12/2013 1:59:00 PM  
 Modified: 12/12/2013 2:45:00 PM

**Electropherogram Summary Continued ...**

**... Peak table for sample 3 : HD09 Re-Soni 1:7**

Peak	Aligned Migration Time [s]	Size [bp]	Conc. [pg/μl]	Molarity [pmol/l]	Observations
26	90.28	684	24.66	54.6	
27	91.72	771	42.46	83.4	
28	94.25	963	15.20	23.9	
29	113.00	10,380	75.00	10.9	Upper Marker
30	114.74	12,029	0.00	0.0	

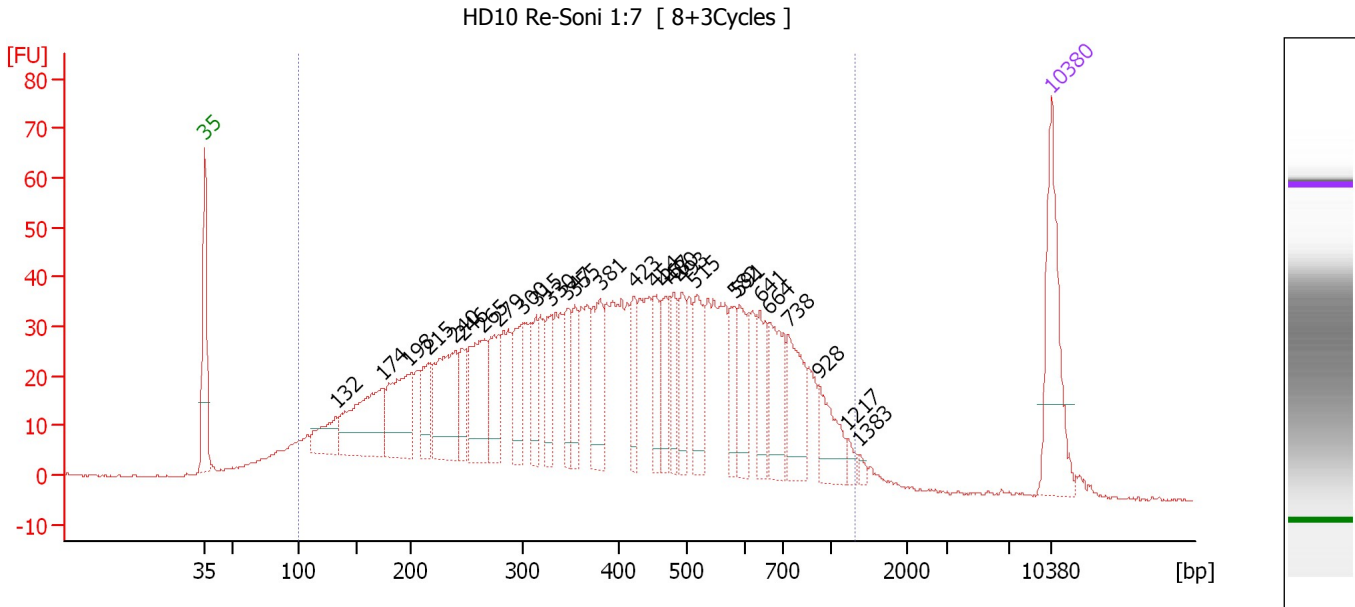
**Region table for sample 3 : HD09 Re-Soni 1:7**

From [bp]	To [bp]	Average Size [bp]	Molarity [pmol/l]	Conc. [pg/μl]	Corr. Area	% of Total	Size distribution in CV [%]	Color
93	1,000	381	13,640.8	2,381.73	1,610.3	95	46.1	

Assay Class: High Sensitivity DNA Assay  
 Data Path: C:\...ents and Settings\Bioanalyzer\2013-12-12\2013-12-12\_004.xad

Created: 12/12/2013 1:59:00 PM  
 Modified: 12/12/2013 2:45:00 PM

**Electropherogram Summary Continued ...**



**Overall Results for sample 4 : HD10 Re-Soni 1:7**

Number of peaks found: 28                      Corr. Area 1: 1,832.1  
 Noise: 0.2

**Peak table for sample 4 : HD10 Re-Soni 1:7**

Peak	Aligned Migration Time [s]	Size [bp]	Conc. [pg/μl]	Molarity [pmol/l]	Observations
1	43.00	35	125.00	5,411.3	Lower Marker
2	53.84	132	43.61	498.9	
3	57.68	174	122.66	1,069.9	
4	59.88	198	94.62	725.4	
5	61.47	215	43.25	304.9	
6	63.72	240	110.12	696.3	
7	64.34	246	31.02	190.8	
8	66.01	265	90.06	515.5	
9	67.33	279	57.15	310.2	
10	69.27	300	53.70	270.8	
11	70.42	315	41.87	201.5	
12	71.61	330	44.06	202.5	
13	72.97	347	36.75	160.6	
14	73.64	355	33.92	144.8	
15	75.71	381	63.13	251.2	
16	78.53	423	32.34	115.9	
17	80.29	454	37.10	123.8	
18	81.04	467	34.32	111.3	
19	81.75	480	32.01	101.1	
20	82.50	493	34.34	105.5	
21	83.60	515	51.34	151.1	
22	86.77	582	32.71	85.2	
23	87.21	591	41.95	107.5	
24	88.93	641	37.77	89.2	
25	89.64	664	58.44	133.4	

Assay Class: High Sensitivity DNA Assay  
 Data Path: C:\...ents and Settings\Bioanalyzer\2013-12-12\2013-12-12\_004.xad


Created: 12/12/2013 1:59:00 PM  
 Modified: 12/12/2013 2:45:00 PM

### Electropherogram Summary Continued ...

#### ... Peak table for sample 4 : HD10 Re-Soni 1:7

Peak	Aligned Migration Time [s]	Size [bp]	Conc. [pg/ $\mu$ l]	Molarity [pmol/l]	Observations
26	91.27	738	58.74	120.7	
27	93.78	928	37.70	61.6	
28	96.12	1,217	7.49	9.3	
29	97.18	1,383	4.04	4.4	
30	113.00	10,380	75.00	10.9	Upper Marker

#### Region table for sample 4 : HD10 Re-Soni 1:7

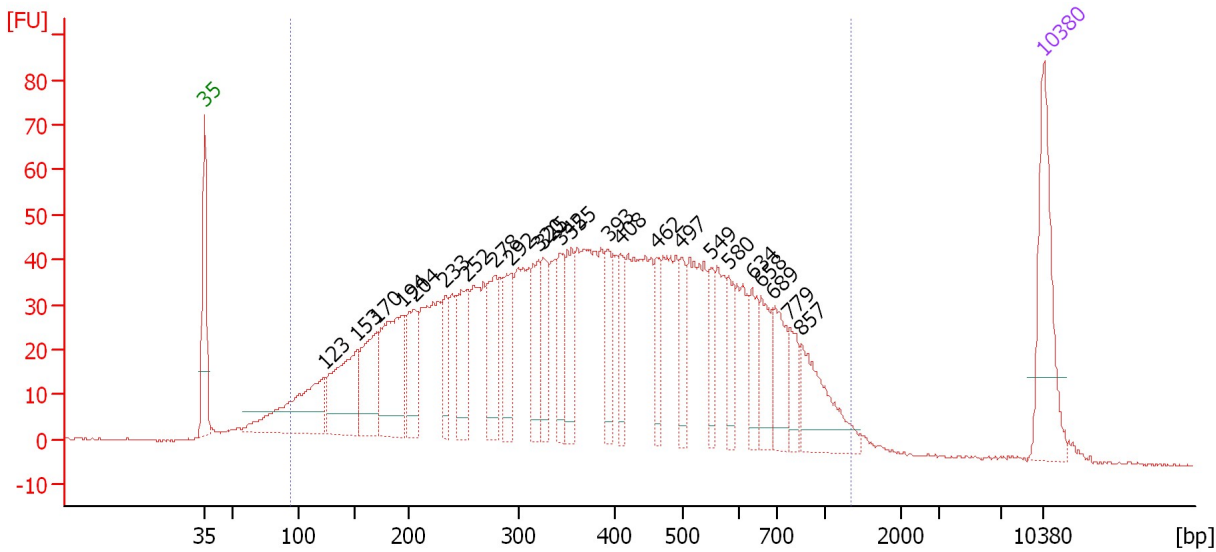
From [bp]	To [bp]	Average Size [bp]	Molarity [pmol/l]	Conc. [pg/ $\mu$ l]	Corr. Area	% of Total	Size distribution in CV [%]	Color
100	1,329	432	12,678.9	2,445.86	1,832.1	95	49.3	

Assay Class: High Sensitivity DNA Assay  
 Data Path: C:\...ents and Settings\Bioanalyzer\2013-12-12\2013-12-12\_004.xad

Created: 12/12/2013 1:59:00 PM  
 Modified: 12/12/2013 2:45:00 PM

**Electropherogram Summary Continued ...**

HD12 Re-Soni 1:7 [ 8+2Cycles ]



**Overall Results for sample 5 : HD12 Re-Soni 1:7**

Number of peaks found: 24                      Corr. Area 1: 2,185.7  
 Noise: 0.2

**Peak table for sample 5 : HD12 Re-Soni 1:7**

Peak	Aligned Migration Time [s]	Size [bp]	Conc. [pg/μl]	Molarity [pmol/l]	Observations
1	43.00	35	125.00	5,411.3	Lower Marker
2	52.97	123	126.84	1,560.9	
3	55.73	153	114.91	1,141.3	
4	57.37	170	83.06	738.5	
5	59.51	194	131.92	1,032.5	
6	60.49	204	59.03	437.9	
7	63.11	233	40.61	264.1	
8	64.89	252	75.13	450.8	
9	67.21	278	62.16	339.0	
10	68.54	292	55.95	289.9	
11	70.86	320	53.21	251.8	
12	71.26	325	47.58	221.6	
13	72.64	342	50.07	221.5	
14	73.62	355	52.53	224.4	
15	76.69	393	37.72	145.4	
16	77.71	408	33.66	124.9	
17	80.74	462	31.97	104.9	
18	82.74	497	31.01	94.5	
19	85.23	549	27.45	75.7	
20	86.70	580	28.40	74.1	
21	88.70	634	30.57	73.0	
22	89.46	658	36.71	84.5	
23	90.44	689	45.78	100.6	
24	91.82	779	24.55	47.7	
25	92.84	857	66.05	116.8	

Assay Class: High Sensitivity DNA Assay  
 Data Path: C:\...ents and Settings\Bioanalyzer\2013-12-12\2013-12-12\_004.xad


Created: 12/12/2013 1:59:00 PM  
 Modified: 12/12/2013 2:45:00 PM

### Electropherogram Summary Continued ...

#### ... Peak table for sample 5 : HD12 Re-Soni 1:7

Peak	Aligned Migration Time [s]	Size [bp]	Conc. [pg/ $\mu$ l]	Molarity [pmol/l]	Observations
26	113.00	10,380	75.00	10.9	Upper Marker

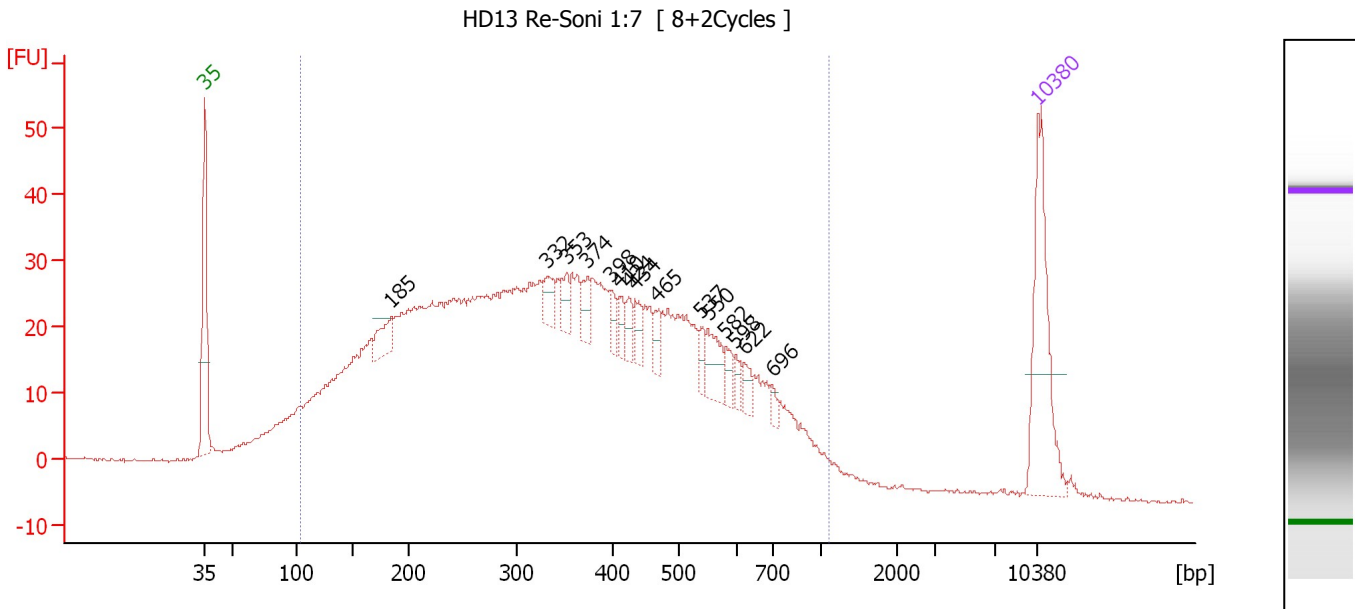
#### Region table for sample 5 : HD12 Re-Soni 1:7

From [bp]	To [bp]	Average Size [bp]	Molarity [pmol/l]	Conc. [pg/ $\mu$ l]	Corr. Area	% of Total	Size distribution in CV [%]	Color
94	1,356	410	13,655.5	2,489.90	2,185.7	96	50.2	

Assay Class: High Sensitivity DNA Assay  
 Data Path: C:\...ents and Settings\Bioanalyzer\2013-12-12\2013-12-12\_004.xad

Created: 12/12/2013 1:59:00 PM  
 Modified: 12/12/2013 2:45:00 PM

**Electropherogram Summary Continued ...**



**Overall Results for sample 6 : HD13 Re-Soni 1:7**

Number of peaks found: 15                      Corr. Area 1: 1,437.5  
 Noise: 0.2

**Peak table for sample 6 : HD13 Re-Soni 1:7**

Peak	Aligned Migration Time [s]	Size [bp]	Conc. [pg/μl]	Molarity [pmol/l]	Observations
1	43.00	35	125.00	5,411.3	Lower Marker
2	58.67	185	25.86	212.3	
3	71.80	332	16.97	77.5	
4	73.45	353	14.88	63.9	
5	75.16	374	15.06	61.0	
6	77.08	398	11.50	43.8	
7	77.80	410	10.21	37.8	
8	78.60	424	12.02	42.9	
9	79.14	434	12.12	42.3	
10	80.93	465	12.82	41.7	
11	84.65	537	10.64	30.0	
12	85.28	550	24.45	67.3	
13	86.76	582	9.19	23.9	
14	87.52	598	7.61	19.3	
15	88.32	622	10.40	25.3	
16	90.65	696	5.67	12.3	
17	113.00	10,380	75.00	10.9	Upper Marker

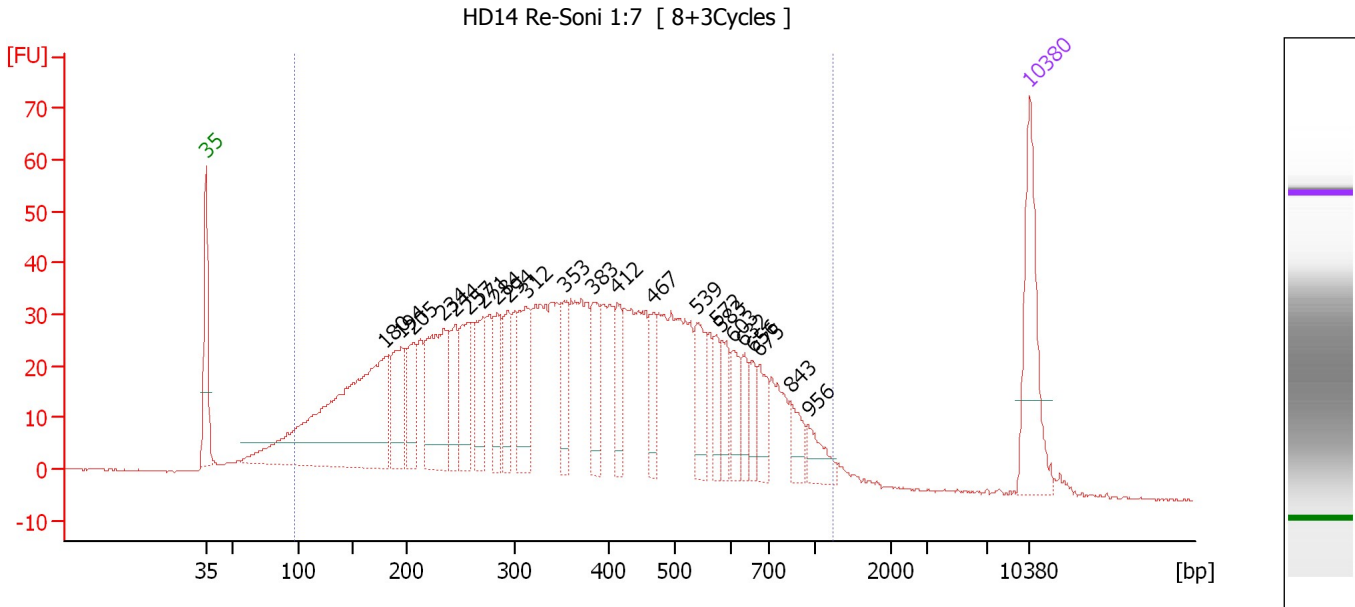
**Region table for sample 6 : HD13 Re-Soni 1:7**

From [bp]	To [bp]	Average Size [bp]	Molarity [pmol/l]	Conc. [pg/μl]	Corr. Area	% of Total	Size distribution in CV [%]	Color
103	1,109	369	13,870.9	2,400.28	1,437.5	94	46.8	Blue

Assay Class: High Sensitivity DNA Assay  
 Data Path: C:\...ents and Settings\Bioanalyzer\2013-12-12\2013-12-12\_004.xad

Created: 12/12/2013 1:59:00 PM  
 Modified: 12/12/2013 2:45:00 PM

**Electropherogram Summary Continued ...**



**Overall Results for sample 7 : HD14 Re-Soni 1:7**

Number of peaks found: 23                      Corr. Area 1: 1,712.6  
 Noise: 0.2

**Peak table for sample 7 : HD14 Re-Soni 1:7**

Peak	Aligned Migration Time [s]	Size [bp]	Conc. [pg/μl]	Molarity [pmol/l]	Observations
1	43.00	35	125.00	5,411.3	Lower Marker
2	58.22	180	376.51	3,175.9	
3	59.58	194	74.13	577.9	
4	60.53	205	49.64	367.3	
5	63.16	234	129.09	837.6	
6	64.16	244	60.20	373.2	
7	65.29	257	63.08	372.1	
8	66.56	271	63.13	353.3	
9	67.74	284	48.19	257.4	
10	68.69	294	50.63	260.9	
11	70.18	312	73.22	355.7	
12	73.45	353	39.35	169.1	
13	75.89	383	47.01	185.9	
14	77.93	412	44.32	162.9	
15	81.01	467	32.02	103.9	
16	84.73	539	46.55	130.9	
17	86.31	572	24.18	64.0	
18	86.81	583	26.03	67.7	
19	87.72	603	26.89	67.6	
20	88.62	632	21.67	52.0	
21	89.39	656	18.06	41.7	
22	89.98	675	29.60	66.4	
23	92.66	843	21.85	39.3	
24	94.15	956	21.14	33.5	
25	113.00	10,380	75.00	10.9	Upper Marker



Assay Class: High Sensitivity DNA Assay  
Data Path: C:\...ents and Settings\Bioanalyzer\2013-12-12\2013-12-12\_004.xad

Created: 12/12/2013 1:59:00 PM  
Modified: 12/12/2013 2:45:00 PM

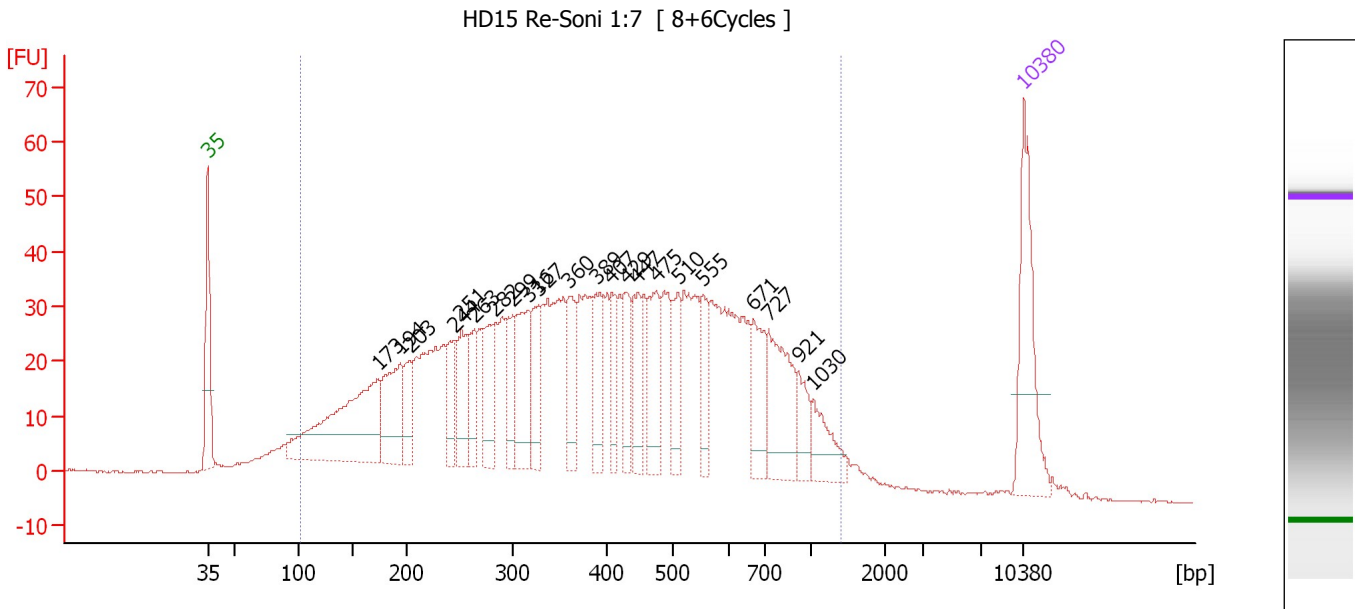
**Electropherogram Summary Continued ...****... Region table for sample 7 : HD14 Re-Soni 1:7**

<b>From [bp]</b>	<b>To [bp]</b>	<b>Average Size [bp]</b>	<b>Molarity [pmol/l]</b>	<b>Conc. [pg/μl]</b>	<b>Corr. Area</b>	<b>% of Total</b>	<b>Size distribution in CV [%]</b>	<b>Color</b>
97	1,245	392	13,430.1	2,387.36	1,712.6	95	49.0	■

Assay Class: High Sensitivity DNA Assay  
 Data Path: C:\...ents and Settings\Bioanalyzer\2013-12-12\2013-12-12\_004.xad

Created: 12/12/2013 1:59:00 PM  
 Modified: 12/12/2013 2:45:00 PM

**Electropherogram Summary Continued ...**



**Overall Results for sample 8 : HD15 Re-Soni 1:7**

Number of peaks found: 22                      Corr. Area 1: 1,678.8  
 Noise: 0.2

**Peak table for sample 8 : HD15 Re-Soni 1:7**

Peak	Aligned Migration Time [s]	Size [bp]	Conc. [pg/μl]	Molarity [pmol/l]	Observations
1	43.00	35	125.00	5,411.3	Lower Marker
2	57.64	173	214.38	1,874.3	
3	59.52	194	89.35	699.1	
4	60.34	203	37.71	282.0	
5	64.14	244	41.28	256.1	
6	64.78	251	58.74	354.3	
7	65.83	263	45.29	261.2	
8	67.61	282	66.89	359.1	
9	69.17	299	41.07	207.9	
10	70.54	316	73.41	351.6	
11	71.37	327	44.05	204.4	
12	74.02	360	51.47	216.8	
13	76.35	389	49.49	192.8	
14	77.63	407	33.07	123.1	
15	78.87	429	42.69	150.9	
16	79.88	447	44.33	150.4	
17	81.48	475	60.74	193.7	
18	83.35	510	41.90	124.5	
19	85.50	555	34.76	94.9	
20	89.85	671	52.22	118.0	
21	91.13	727	82.27	171.4	
22	93.69	921	26.38	43.4	
23	94.93	1,030	32.77	48.2	
24	113.00	10,380	75.00	10.9	Upper Marker

Assay Class: High Sensitivity DNA Assay  
Data Path: C:\...ents and Settings\Bioanalyzer\2013-12-12\2013-12-12\_004.xad

Created: 12/12/2013 1:59:00 PM  
Modified: 12/12/2013 2:45:00 PM

**Electropherogram Summary Continued ...**

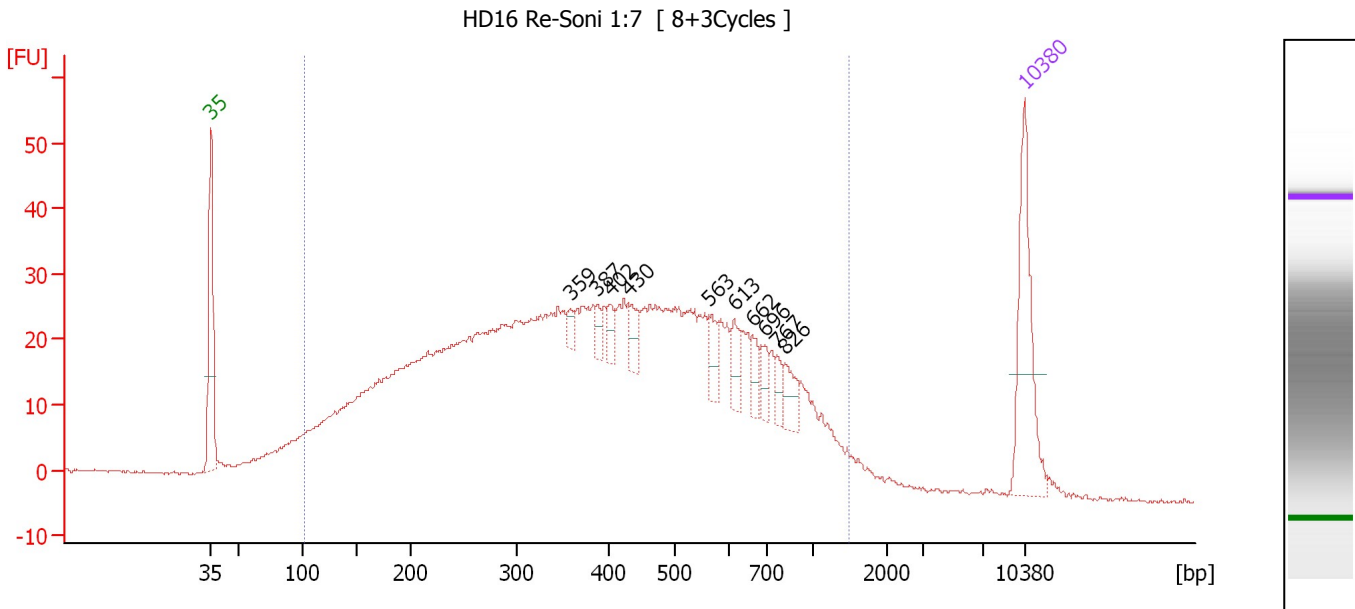
... Region table for sample 8 : HD15 Re-Soni 1:7

From [bp]	To [bp]	Average Size [bp]	Molarity [pmol/l]	Conc. [pg/μl]	Corr. Area	% of Total	Size distribution in CV [%]	Color
101	1,408	436	12,263.1	2,375.03	1,678.8	95	51.4	■

Assay Class: High Sensitivity DNA Assay  
 Data Path: C:\...ents and Settings\Bioanalyzer\2013-12-12\2013-12-12\_004.xad

Created: 12/12/2013 1:59:00 PM  
 Modified: 12/12/2013 2:45:00 PM

**Electropherogram Summary Continued ...**



**Overall Results for sample 9 : HD16 Re-Soni 1:7**

Number of peaks found: 10                      Corr. Area 1: 1,326.8  
 Noise: 0.2

**Peak table for sample 9 : HD16 Re-Soni 1:7**

Peak	Aligned Migration Time [s]	Size [bp]	Conc. [pg/μl]	Molarity [pmol/l]	Observations
1	43.00	35	125.00	5,411.3	Lower Marker
2	73.94	359	8.08	34.1	
3	76.23	387	10.59	41.4	
4	77.38	402	11.14	42.0	
5	78.94	430	20.80	73.3	
6	85.87	563	18.81	50.6	
7	88.03	613	19.19	47.5	
8	89.59	662	13.05	29.8	
9	90.65	696	15.04	32.8	
10	91.66	767	10.06	19.9	
11	92.44	826	18.25	33.5	
12	113.00	10,380	75.00	10.9	Upper Marker

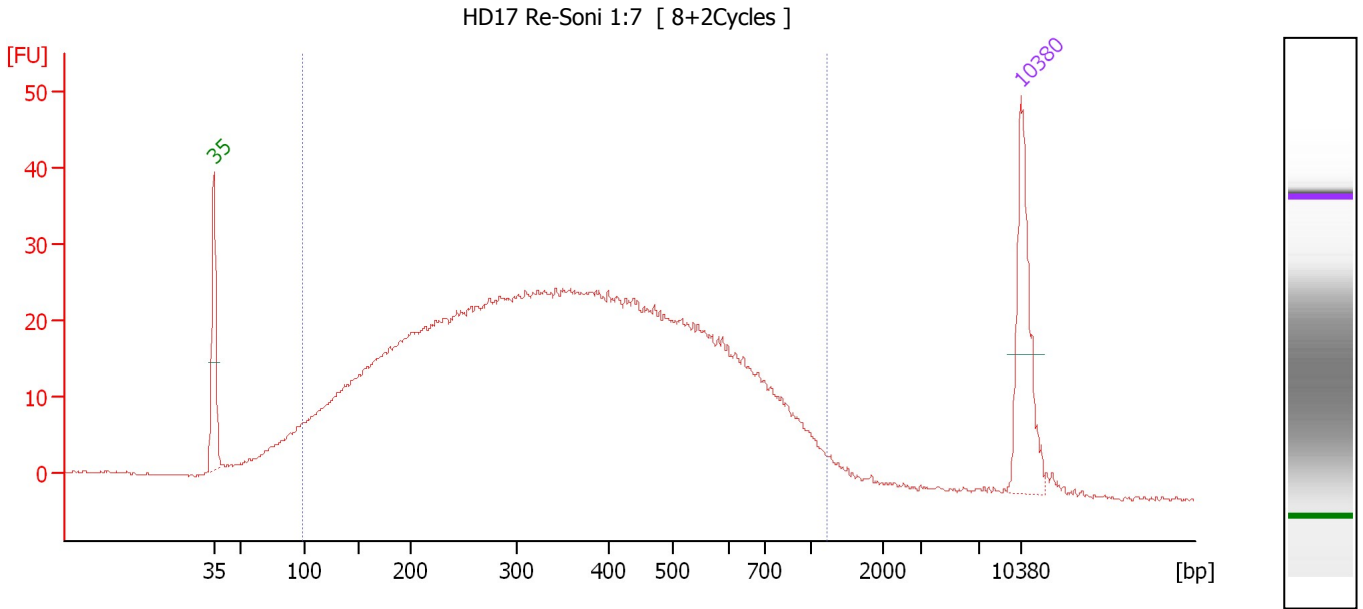
**Region table for sample 9 : HD16 Re-Soni 1:7**

From [bp]	To [bp]	Average Size [bp]	Molarity [pmol/l]	Conc. [pg/μl]	Corr. Area	% of Total	Size distribution in CV [%]	Color
102	1,503	436	12,388.9	2,369.07	1,326.8	95	53.8	Blue

Assay Class: High Sensitivity DNA Assay  
 Data Path: C:\...ents and Settings\Bioanalyzer\2013-12-12\2013-12-12\_004.xad

Created: 12/12/2013 1:59:00 PM  
 Modified: 12/12/2013 2:45:00 PM

**Electropherogram Summary Continued ...**



**Overall Results for sample 10 : HD17 Re-Soni 1:7**

Number of peaks found: 0                      Corr. Area 1: 1,200.1  
 Noise: 0.2

**Peak table for sample 10 : HD17 Re-Soni 1:7**

Peak	Aligned Migration Time [s]	Size [bp]	Conc. [pg/µl]	Molarity [pmol/l]	Observations
1	43.00	35	125.00	5,411.3	Lower Marker
2	113.00	10,380	75.00	10.9	Upper Marker

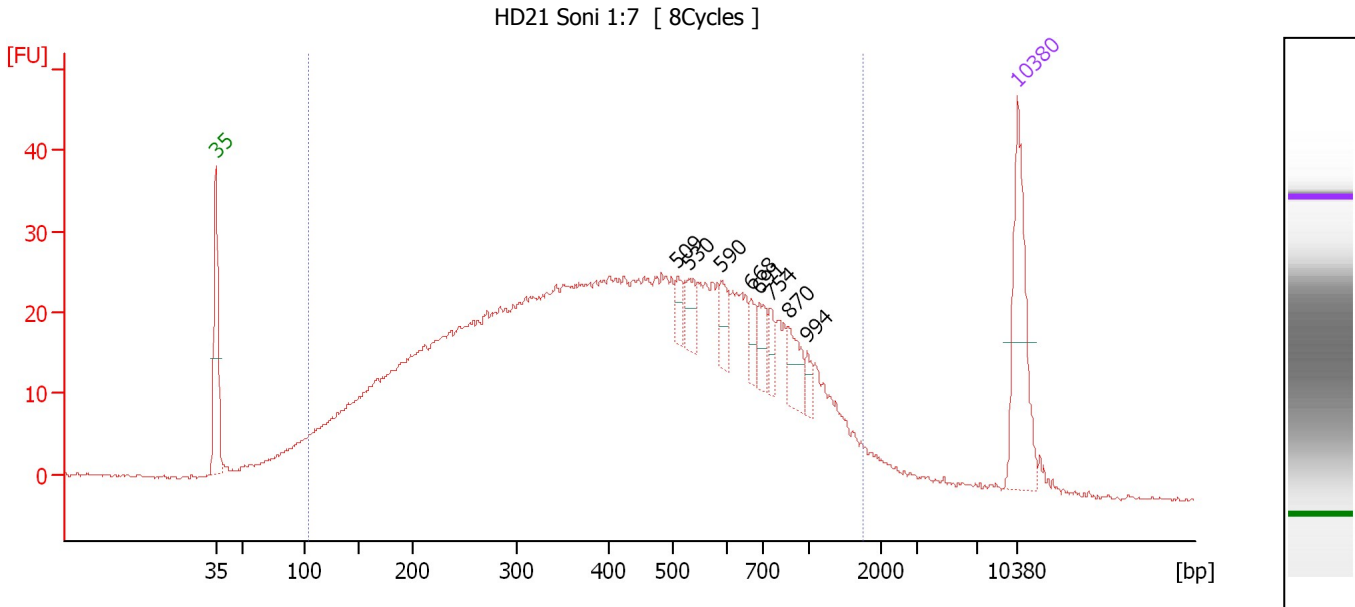
**Region table for sample 10 : HD17 Re-Soni 1:7**

From [bp]	To [bp]	Average Size [bp]	Molarity [pmol/l]	Conc. [pg/µl]	Corr. Area	% of Total	Size distribution in CV [%]	Color
99	1,224	385	13,816.6	2,435.28	1,200.1	95	49.2	Blue

Assay Class: High Sensitivity DNA Assay  
 Data Path: C:\...ents and Settings\Bioanalyzer\2013-12-12\2013-12-12\_004.xad

Created: 12/12/2013 1:59:00 PM  
 Modified: 12/12/2013 2:45:00 PM

**Electropherogram Summary Continued ...**



**Overall Results for sample 11 : HD21 Soni 1:7**

Number of peaks found: 8                      Corr. Area 1: 1,240.6  
 Noise: 0.2

**Peak table for sample 11 : HD21 Soni 1:7**

Peak	Aligned Migration Time [s]	Size [bp]	Conc. [pg/μl]	Molarity [pmol/l]	Observations
1	43.00	35	125.00	5,411.3	Lower Marker
2	83.33	509	12.14	36.1	
3	84.31	530	18.18	52.0	
4	87.15	590	22.01	56.5	
5	89.76	668	12.89	29.3	
6	90.50	691	19.07	41.8	
7	91.48	754	12.37	24.9	
8	93.02	870	23.72	41.3	
9	94.65	994	7.73	11.8	
10	113.00	10,380	75.00	10.9	Upper Marker

**Region table for sample 11 : HD21 Soni 1:7**

From [bp]	To [bp]	Average Size [bp]	Molarity [pmol/l]	Conc. [pg/μl]	Corr. Area	% of Total	Size distribution in CV [%]	Color
103	1,759	473	13,417.7	2,672.99	1,240.6	95	59.8	Blue

Assay Class: High Sensitivity DNA Assay  
Data Path: C:\...ents and Settings\Bioanalyzer\2013-12-12\2013-12-12\_004.xad

Created: 12/12/2013 1:59:00 PM  
Modified: 12/12/2013 2:45:00 PM

**Gel Image**

