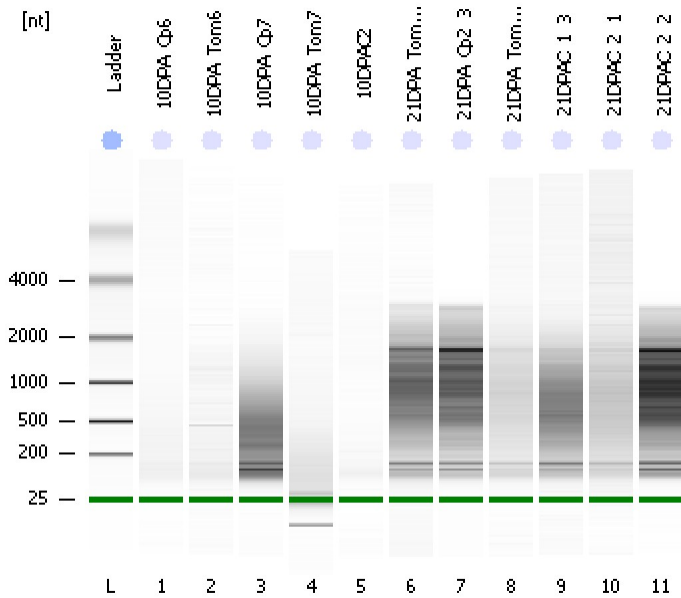


Assay Class: Eukaryote Total RNA Pico
Data Path: C:\...ents and Settings\Bioanalyzer\2013-12-12\2013-12-12_005.xad

Created: 12/12/2013 4:05:50 PM
Modified: 12/12/2013 4:28:49 PM

Electrophoresis File Run Summary



Instrument Information:

Instrument Name: DE13701086 Firmware: C.01.069
Serial#: DE13701086 Type: G2938B

Assay Information:

Assay Origin Path: C:\Program Files\Agilent\2100 bioanalyzer\2100 expert\assays\RNA\Eukaryote Total RNA Pico Series II.xsy

Assay Class: Eukaryote Total RNA Pico

Version: 2.6

Assay Comments: Total RNA Analysis pg sensitivity (Eukaryote)

© Copyright 2003 - 2009 Agilent Technologies, Inc.

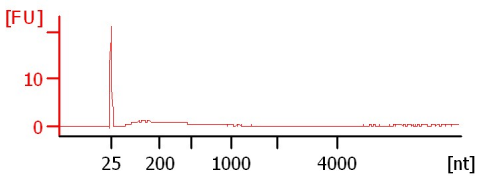
Chip Information:

Chip Lot #:

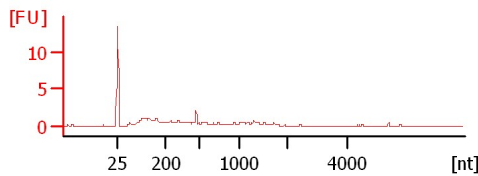
Reagent Kit Lot #:

Chip Comments:

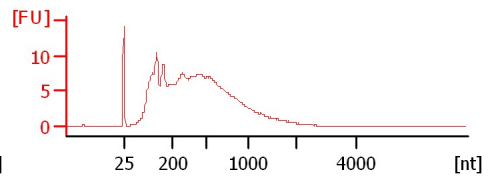
10DPA_Cp6
RIN:1



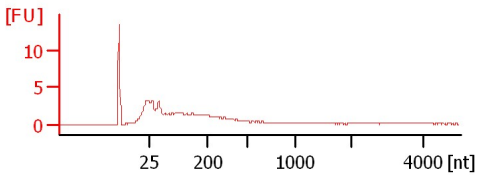
10DPA_Tom6
RIN: 1.60



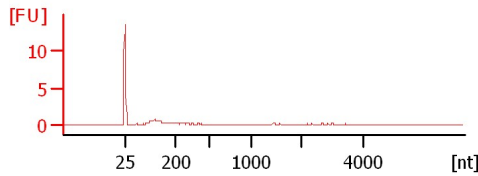
10DPA_Cp7
RIN: 2.20



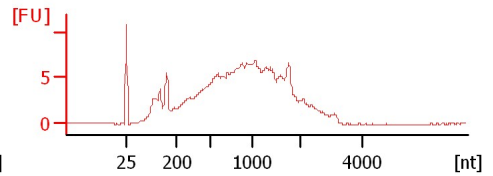
10DPA_Tom7
RIN: 2.50



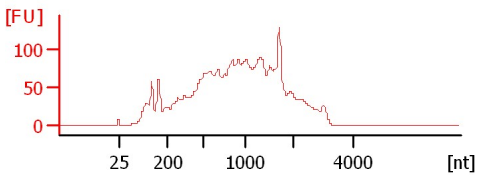
10DPAC2
RIN:1



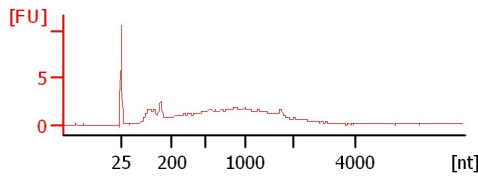
21DPA_Tom2_2
RIN:3



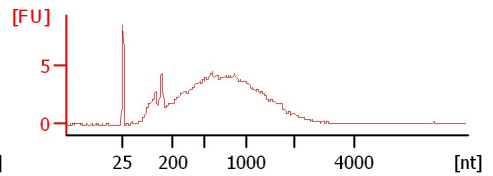
21DPA_Cp2_3
RIN: 2.90



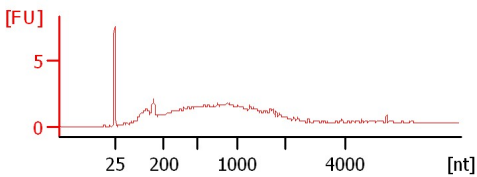
21DPA_Tom2_3
RIN: 2.10



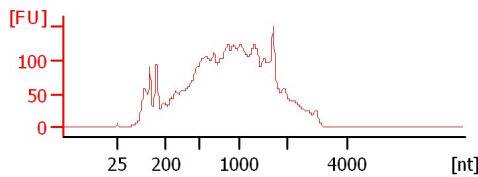
21DPAC_1_3
RIN: 2.20



21DPAC_2_1
RIN: 2.60



21DPAC_2_2
RIN: 2.60



Assay Class: Eukaryote Total RNA Pico
Data Path: C:\...ents and Settings\Bioanalyzer\2013-12-12\2013-12-12_005.xad

Created: 12/12/2013 4:05:50 PM
Modified: 12/12/2013 4:28:49 PM

Electrophoresis File Run Summary (Chip Summary)

Sample Name	Sample Comment	Status	Result Label	Result Color
10DPA_Cp6		✓	RIN:1	
10DPA_Tom6		✓	RIN: 1.60	
10DPA_Cp7		✓	RIN: 2.20	
10DPA_Tom7		✓	RIN: 2.50	
10DPAC2		✓	RIN:1	
21DPA_Tom2_2		✓	RIN:3	
21DPA_Cp2_3		✓	RIN: 2.90	
21DPA_Tom2_3		✓	RIN: 2.10	
21DPAC_1_3		✓	RIN: 2.20	
21DPAC_2_1		✓	RIN: 2.60	
21DPAC_2_2		✓	RIN: 2.60	
Ladder		✓	All Other Samples	

Chip Lot #

Reagent Kit Lot #

Chip Comments :

Assay Class: Eukaryote Total RNA Pico
Data Path: C:\...ents and Settings\Bioanalyzer\2013-12-12\2013-12-12_005.xad

Created: 12/12/2013 4:05:50 PM
Modified: 12/12/2013 4:28:49 PM

Electrophoresis Assay Details

General Analysis Settings

Number of Available Sample and Ladder Wells (Max.) : 12
Minimum Visible Range [s] : 17
Maximum Visible Range [s] : 70
Start Analysis Time Range [s] : 18
End Analysis Time Range [s] : 69
Ladder Concentration [pg/ μ l] : 1000
Lower Marker Concentration [pg/ μ l] : 0
Upper Marker Concentration [pg/ μ l] : 0
Used Lower Marker for Quantitation
Standard Curve Fit is Logarithmic
Show Data Aligned to Lower Marker

Integrator Settings

Integration Start Time [s] : 18
Integration End Time [s] : 69
Slope Threshold : 0.6
Height Threshold [FU] : 0.5
Area Threshold : 0.2
Width Threshold [s] : 0.3
Baseline Plateau [s] : 6

Filter Settings

Filter Width [s] : 0.5
Polynomial Order : 4

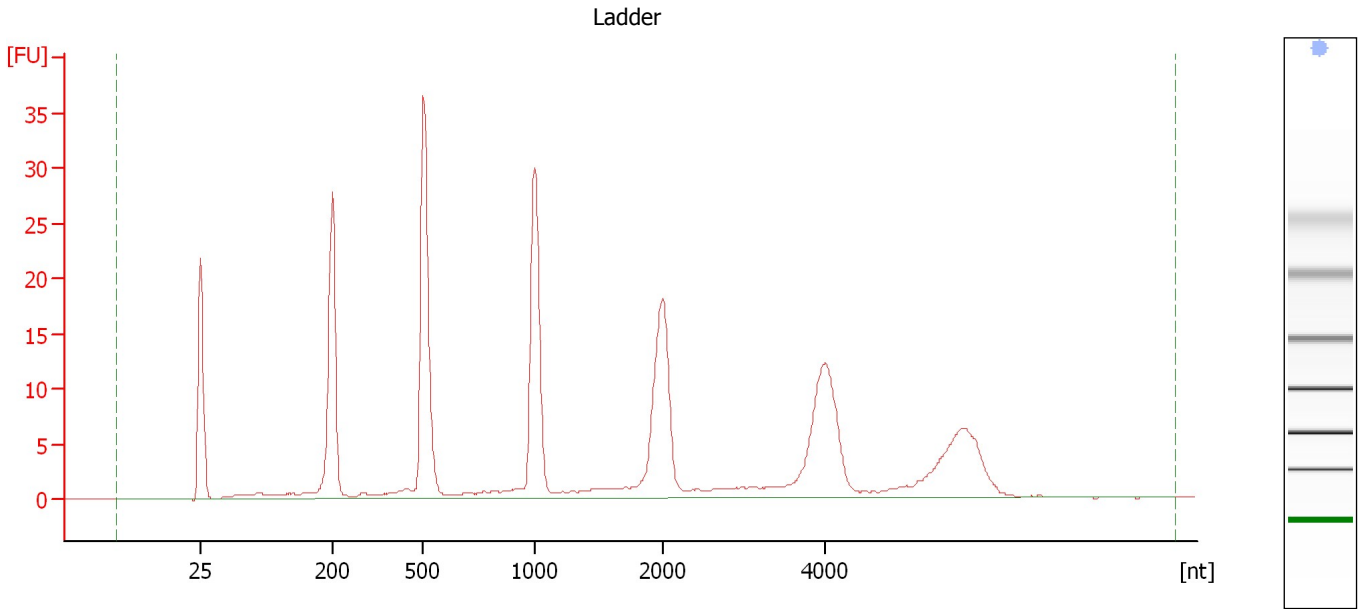
Ladder

Ladder Peak	Size
1	25
2	200
3	500
4	1000
5	2000
6	4000

Assay Class: Eukaryote Total RNA Pico
Data Path: C:\...ents and Settings\Bioanalyzer\2013-12-12\2013-12-12_005.xad

Created: 12/12/2013 4:05:50 PM
Modified: 12/12/2013 4:28:49 PM

Electropherogram Summary



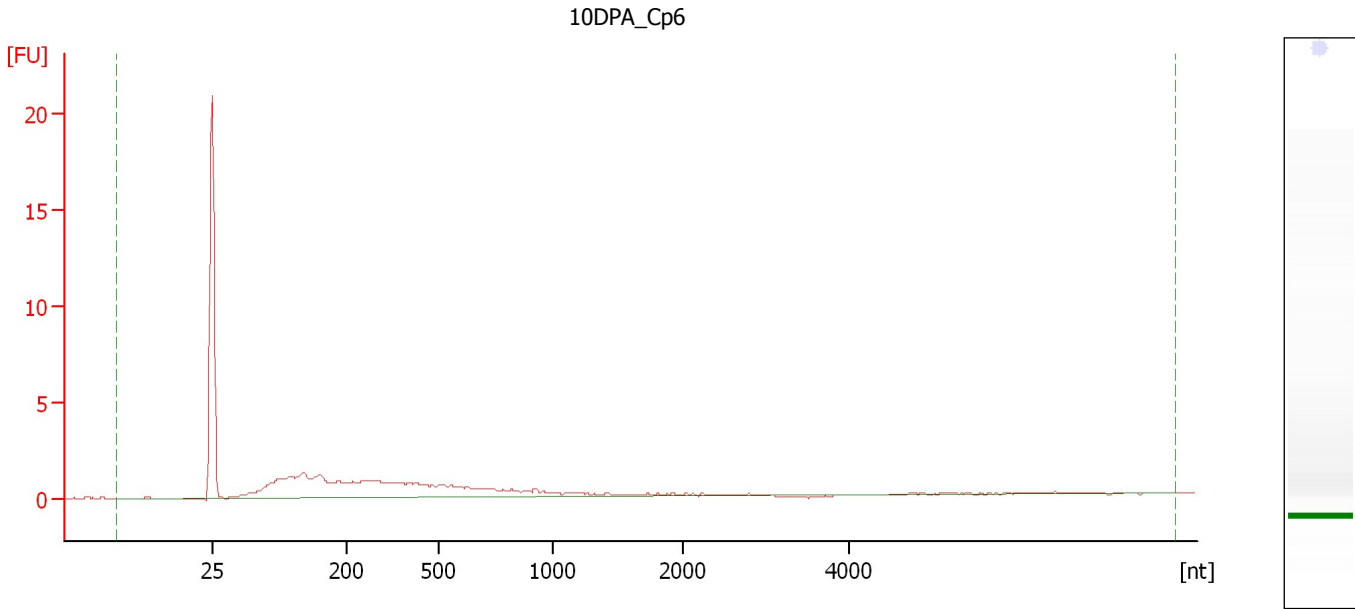
Overall Results for Ladder

RNA Area:	246.1	Result Flagging Color:	
RNA Concentration:	1,000 pg/μl	Result Flagging Label:	All Other Samples

Assay Class: Eukaryote Total RNA Pico
Data Path: C:\...ents and Settings\Bioanalyzer\2013-12-12\2013-12-12_005.xad

Created: 12/12/2013 4:05:50 PM
Modified: 12/12/2013 4:28:49 PM

Electropherogram Summary Continued ...



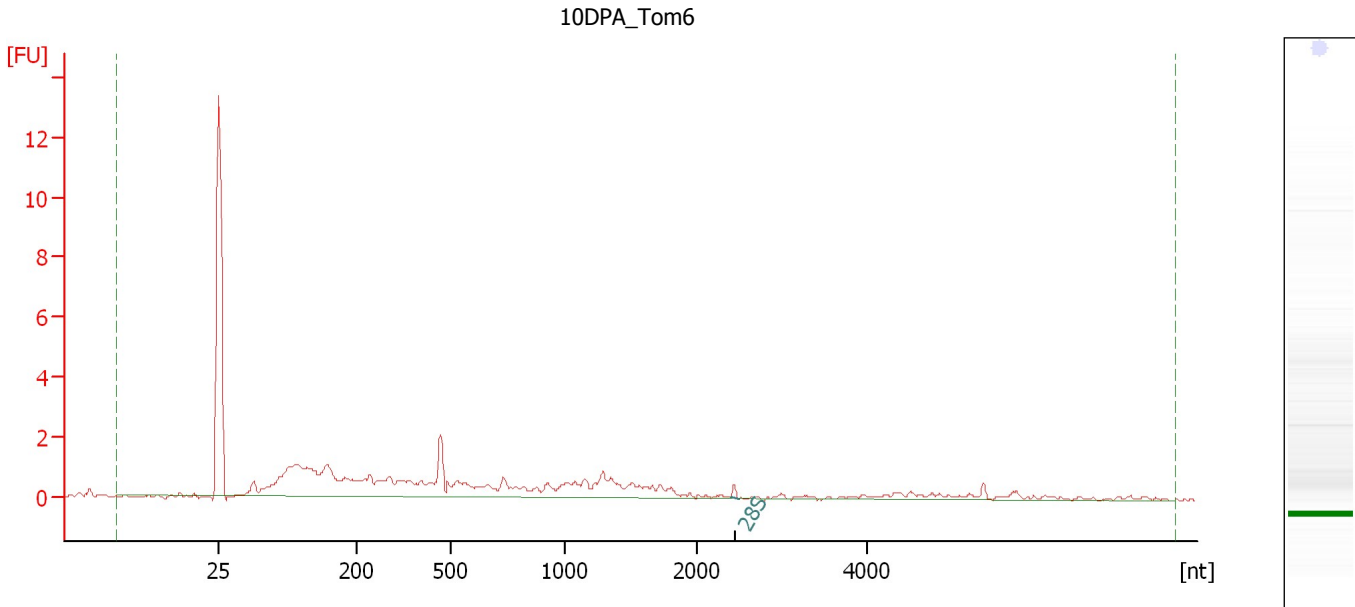
Overall Results for sample 1 : 10DPA Cp6

RNA Area:	31.9	RNA Integrity Number (RIN):	1 (B.02.08)
RNA Concentration:	130 µg/µl	Result Flagging Color:	
rRNA Ratio [28s / 18s]:	0.0	Result Flagging Label:	RIN:1

Assay Class: Eukaryote Total RNA Pico
 Data Path: C:\...ents and Settings\Bioanalyzer\2013-12-12\2013-12-12_005.xad

Created: 12/12/2013 4:05:50 PM
 Modified: 12/12/2013 4:28:49 PM

Electropherogram Summary Continued ...



Overall Results for sample 2 : 10DPA Tom6

RNA Area:	34.0	RNA Integrity Number (RIN):	1.6 (B.02.08)
RNA Concentration:	138 pg/μl	Result Flagging Color:	
rRNA Ratio [28s / 18s]:	0.0	Result Flagging Label:	RIN: 1.60

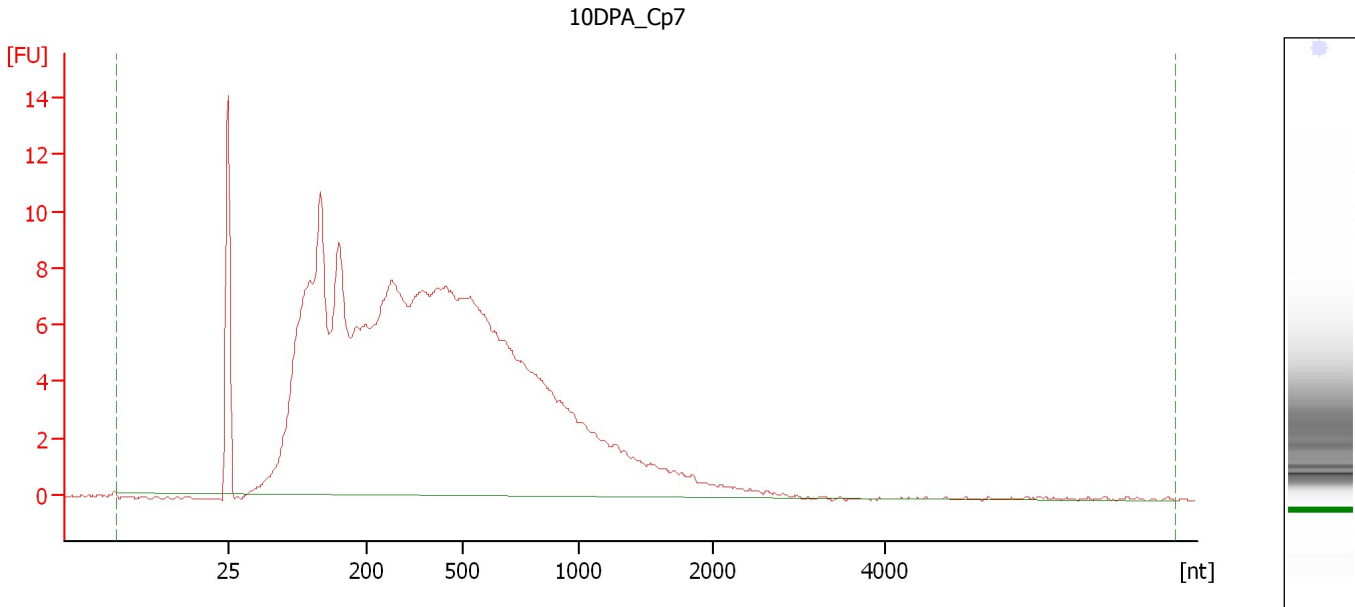
Fragment table for sample 2 : 10DPA Tom6

Name	Start Size [nt]	End Size [nt]	Area	% of total Area
28S	2,395	2,496	0.2	0.6

Assay Class: Eukaryote Total RNA Pico
Data Path: C:\...ents and Settings\Bioanalyzer\2013-12-12\2013-12-12_005.xad

Created: 12/12/2013 4:05:50 PM
Modified: 12/12/2013 4:28:49 PM

Electropherogram Summary Continued ...



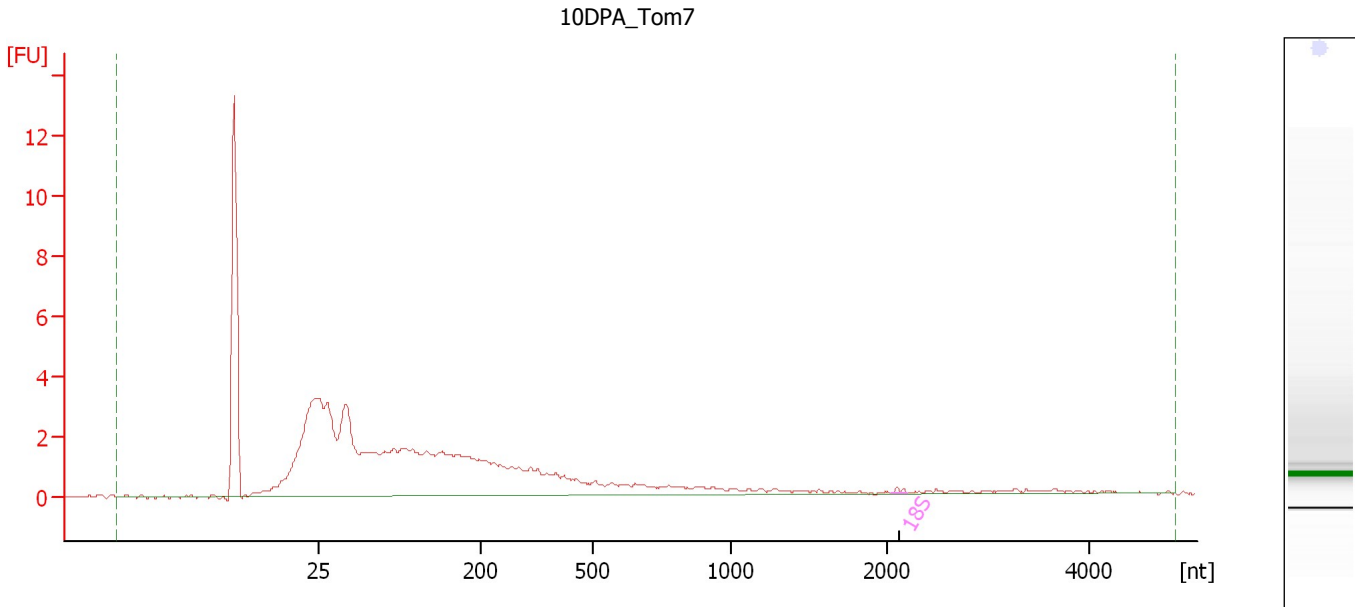
Overall Results for sample 3 : 10DPA_Cp7

RNA Area:	272.9	RNA Integrity Number (RIN):	2.2 (B.02.08)
RNA Concentration:	1,109 pg/μl	Result Flagging Color:	
rRNA Ratio [28s / 18s]:	0.0	Result Flagging Label:	RIN: 2.20

Assay Class: Eukaryote Total RNA Pico
Data Path: C:\...ents and Settings\Bioanalyzer\2013-12-12\2013-12-12_005.xad

Created: 12/12/2013 4:05:50 PM
Modified: 12/12/2013 4:28:49 PM

Electropherogram Summary Continued ...



Overall Results for sample 4 : 10DPA Tom7

RNA Area:	71.7	RNA Integrity Number (RIN):	2.5 (B.02.08)
RNA Concentration:	291 pg/μl	Result Flagging Color:	
rRNA Ratio [28s / 18s]:	0.0	Result Flagging Label:	RIN: 2.50

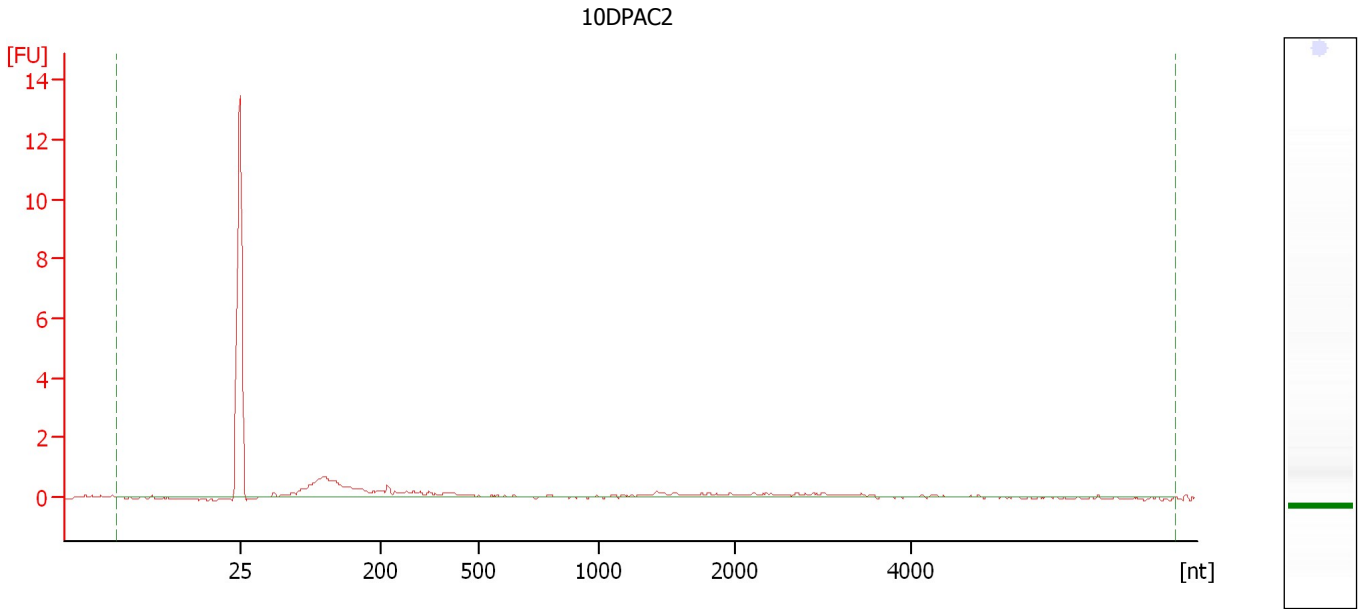
Fragment table for sample 4 : 10DPA Tom7

Name	Start Size [nt]	End Size [nt]	Area	% of total Area
18S	2,041	2,200	0.1	0.2

Assay Class: Eukaryote Total RNA Pico
Data Path: C:\...ents and Settings\Bioanalyzer\2013-12-12\2013-12-12_005.xad

Created: 12/12/2013 4:05:50 PM
Modified: 12/12/2013 4:28:49 PM

Electropherogram Summary Continued ...



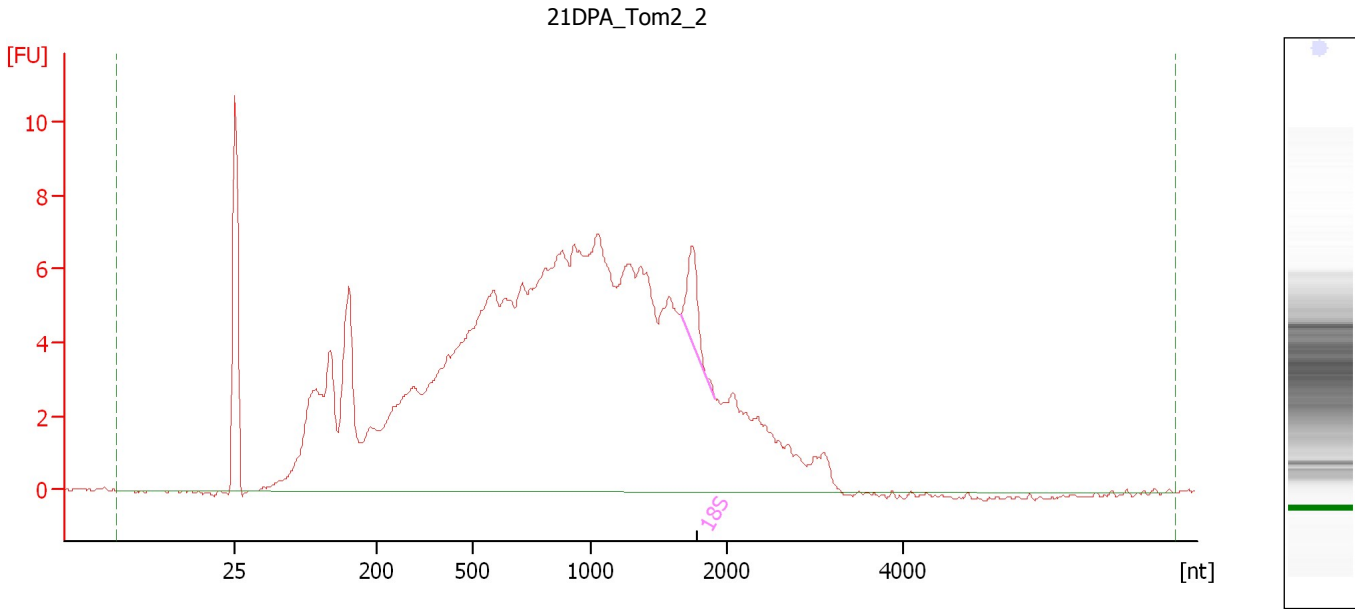
Overall Results for sample 5 : 10DPAC2

RNA Area:	10.4	RNA Integrity Number (RIN):	1 (B.02.08)
RNA Concentration:	42 pg/ μ l	Result Flagging Color:	
rRNA Ratio [28s / 18s]:	0.0	Result Flagging Label:	RIN:1

Assay Class: Eukaryote Total RNA Pico
Data Path: C:\...ents and Settings\Bioanalyzer\2013-12-12\2013-12-12_005.xad

Created: 12/12/2013 4:05:50 PM
Modified: 12/12/2013 4:28:49 PM

Electropherogram Summary Continued ...



Overall Results for sample 6 : 21DPA Tom2_2

RNA Area:	241.8	RNA Integrity Number (RIN):	3 (B.02.08)
RNA Concentration:	982 pg/μl	Result Flagging Color:	
rRNA Ratio [28s / 18s]:	0.0	Result Flagging Label:	RIN:3

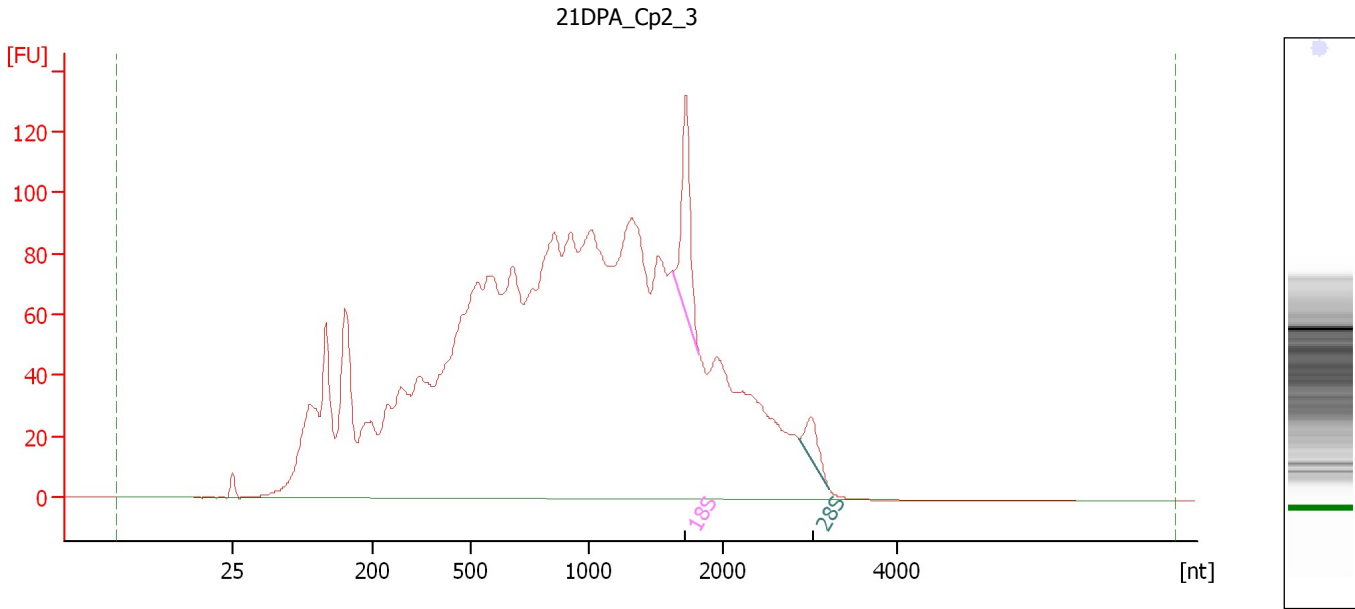
Fragment table for sample 6 : 21DPA Tom2_2

Name	Start Size [nt]	End Size [nt]	Area	% of total Area
18S	1,650	1,910	3.2	1.3

Assay Class: Eukaryote Total RNA Pico
 Data Path: C:\...ents and Settings\Bioanalyzer\2013-12-12\2013-12-12_005.xad

Created: 12/12/2013 4:05:50 PM
 Modified: 12/12/2013 4:28:49 PM

Electropherogram Summary Continued ...



Overall Results for sample 7 : 21DPA Cp2 3

RNA Area:	3,315.9	RNA Integrity Number (RIN):	2.9 (B.02.08)
RNA Concentration:	13,474 pg/μl	Result Flagging Color:	
rRNA Ratio [28s / 18s]:	0.3	Result Flagging Label:	RIN: 2.90

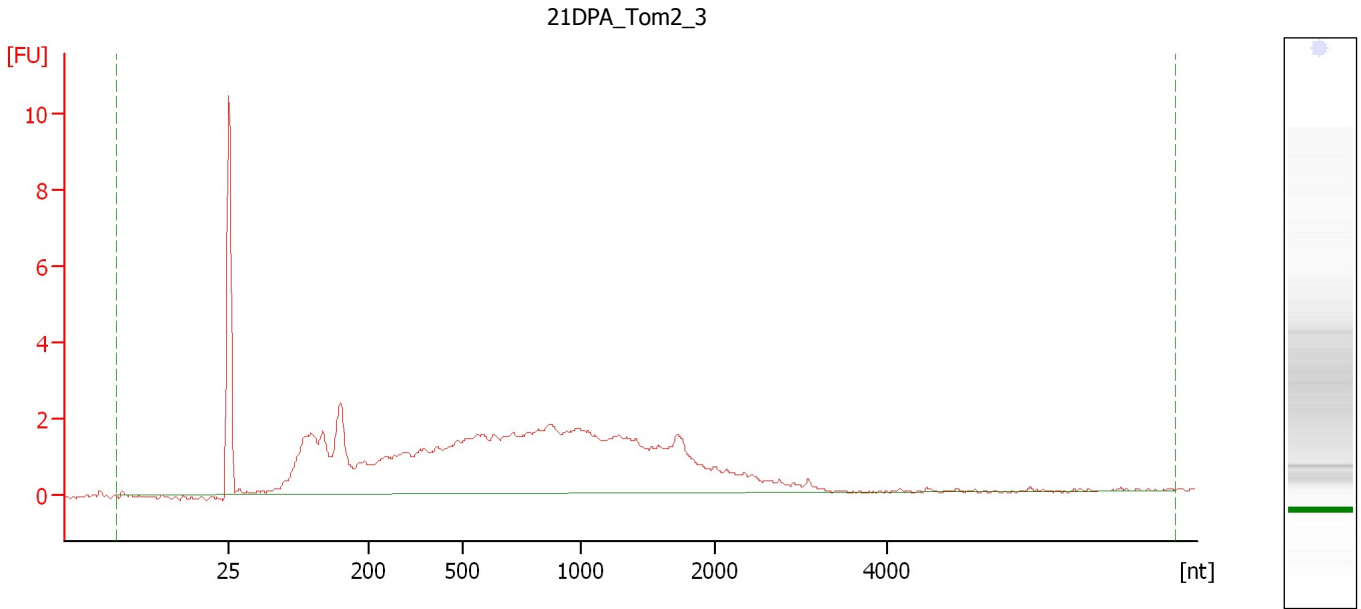
Fragment table for sample 7 : 21DPA Cp2 3

Name	Start Size [nt]	End Size [nt]	Area	% of total Area
18S	1,632	1,821	69.9	2.1
28S	2,877	3,221	17.5	0.5

Assay Class: Eukaryote Total RNA Pico
Data Path: C:\...ents and Settings\Bioanalyzer\2013-12-12\2013-12-12_005.xad

Created: 12/12/2013 4:05:50 PM
Modified: 12/12/2013 4:28:49 PM

Electropherogram Summary Continued ...



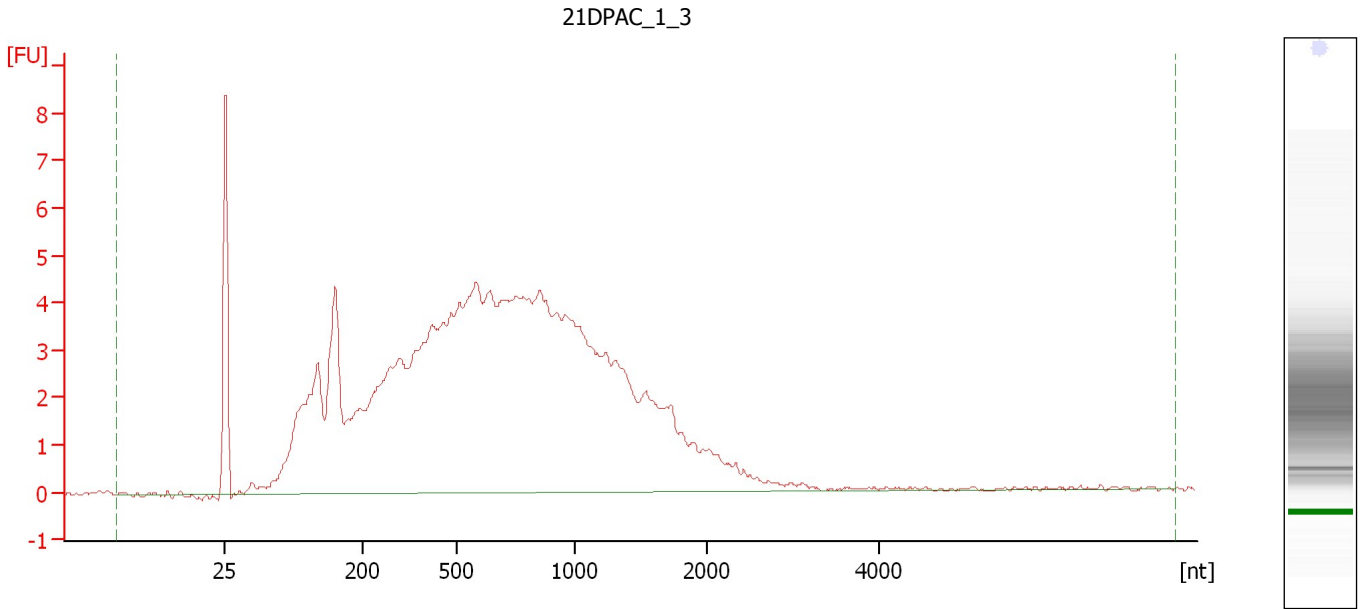
Overall Results for sample 8 : 21DPA Tom2_3

RNA Area:	75.0	RNA Integrity Number (RIN):	2.1 (B.02.08)
RNA Concentration:	305 pg/μl	Result Flagging Color:	
rRNA Ratio [28s / 18s]:	0.0	Result Flagging Label:	RIN: 2.10

Assay Class: Eukaryote Total RNA Pico
Data Path: C:\...ents and Settings\Bioanalyzer\2013-12-12\2013-12-12_005.xad

Created: 12/12/2013 4:05:50 PM
Modified: 12/12/2013 4:28:49 PM

Electropherogram Summary Continued ...



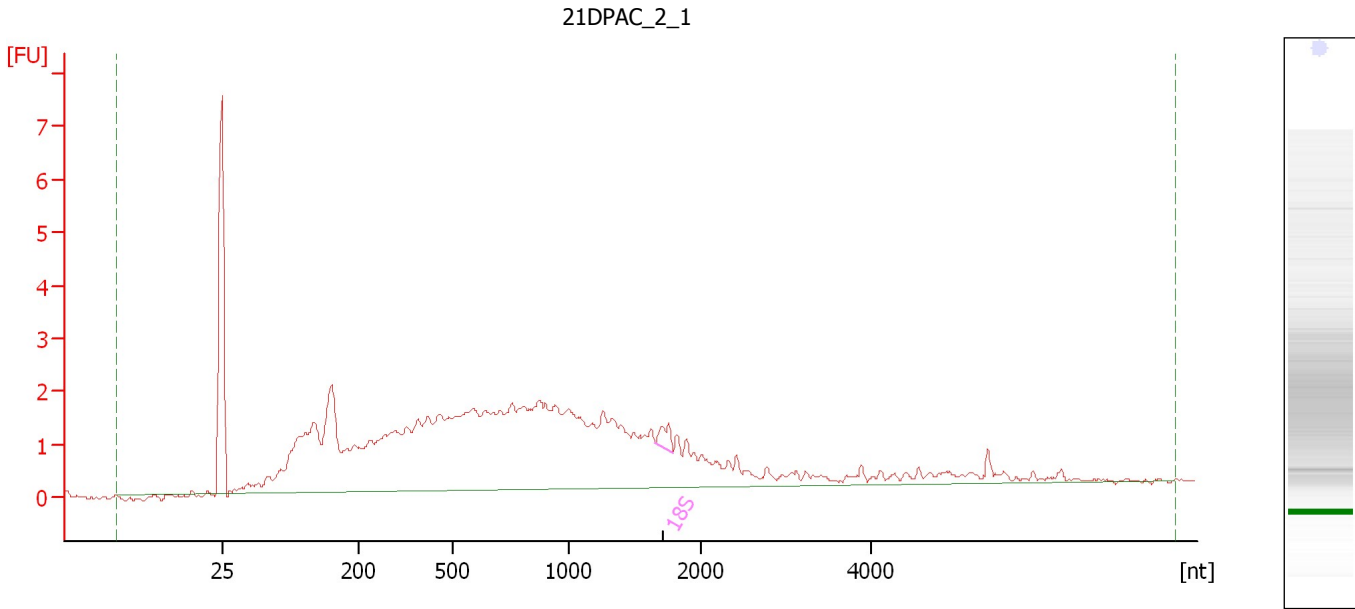
Overall Results for sample 9 : 21DPAC 1 3

RNA Area:	158.4	RNA Integrity Number (RIN):	2.2 (B.02.08)
RNA Concentration:	644 µg/µl	Result Flagging Color:	
rRNA Ratio [28s / 18s]:	0.0	Result Flagging Label:	RIN: 2.20

Assay Class: Eukaryote Total RNA Pico
Data Path: C:\...ents and Settings\Bioanalyzer\2013-12-12\2013-12-12_005.xad

Created: 12/12/2013 4:05:50 PM
Modified: 12/12/2013 4:28:49 PM

Electropherogram Summary Continued ...



Overall Results for sample 10 : 21DPAC 2 1

RNA Area:	72.2	RNA Integrity Number (RIN):	2.6 (B.02.08)
RNA Concentration:	293 pg/μl	Result Flagging Color:	
rRNA Ratio [28s / 18s]:	0.0	Result Flagging Label:	RIN: 2.60

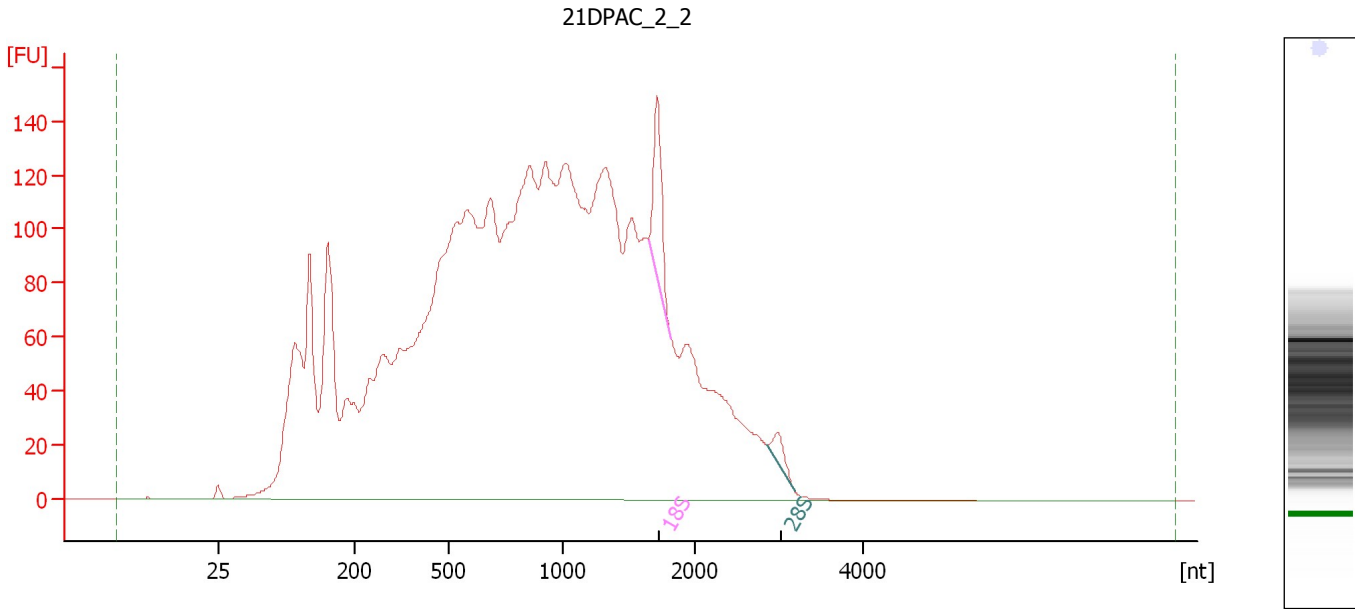
Fragment table for sample 10 : 21DPAC 2 1

Name	Start Size [nt]	End Size [nt]	Area	% of total Area
18S	1,657	1,794	0.5	0.8

Assay Class: Eukaryote Total RNA Pico
 Data Path: C:\...ents and Settings\Bioanalyzer\2013-12-12\2013-12-12_005.xad

Created: 12/12/2013 4:05:50 PM
 Modified: 12/12/2013 4:28:49 PM

Electropherogram Summary Continued ...



Overall Results for sample 11 : 21DPAC 2 2

RNA Area:	4,637.7	RNA Integrity Number (RIN):	2.6 (B.02.08)
RNA Concentration:	18,845 pg/µl	Result Flagging Color:	
rRNA Ratio [28s / 18s]:	0.2	Result Flagging Label:	RIN: 2.60

Fragment table for sample 11 : 21DPAC 2 2

Name	Start Size [nt]	End Size [nt]	Area	% of total Area
18S	1,644	1,823	64.2	1.4
28S	2,863	3,179	13.4	0.3

Assay Class: Eukaryote Total RNA Pico
Data Path: C:\...ents and Settings\Bioanalyzer\2013-12-12\2013-12-12_005.xad

Created: 12/12/2013 4:05:50 PM
Modified: 12/12/2013 4:28:49 PM

Gel Image

