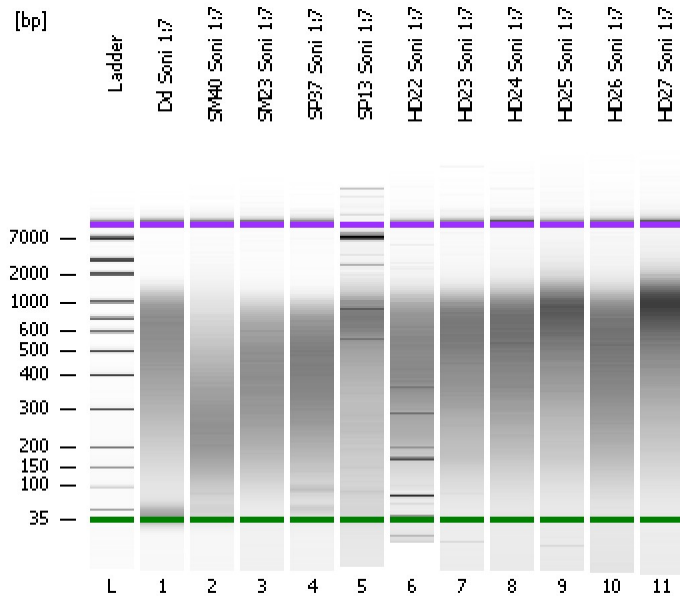


Assay Class: High Sensitivity DNA Assay
Data Path: C:\...ents and Settings\Bioanalyzer\2013-12-13\2013-12-13_001.xad

Created: 12/13/2013 9:50:31 AM
Modified: 12/13/2013 10:33:08 AM

Electrophoresis File Run Summary



Instrument Information:

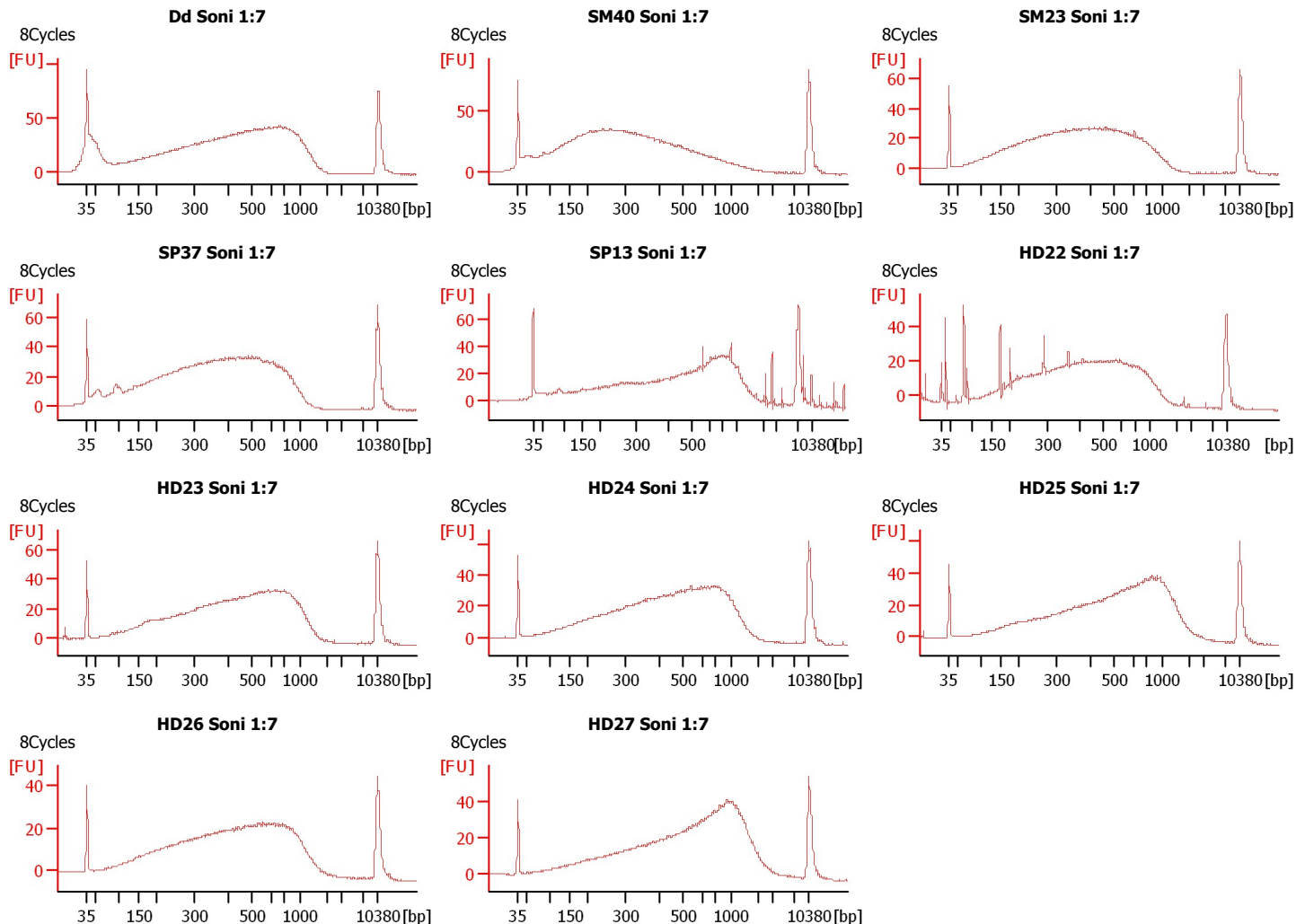
Instrument Name: DE13701086 Firmware: C.01.069
Serial#: DE13701086 Type: G2938B

Assay Information:

Assay Origin Path: C:\Program Files\Agilent\2100 bioanalyzer\2100 expert\assays\dsDNA\High Sensitivity DNA.xsy
Assay Class: High Sensitivity DNA Assay
Version: 1.03
Assay Comments: Copyright © 2003-2010 Agilent Technologies

Chip Information:

Chip Lot #: Reagent Kit Lot #: Chip Comments:



Assay Class: High Sensitivity DNA Assay
Data Path: C:\...ents and Settings\Bioanalyzer\2013-12-13\2013-12-13_001.xad

Created: 12/13/2013 9:50:31 AM
Modified: 12/13/2013 10:33:08 AM

Electrophoresis File Run Summary (Chip Summary)

Sample Name	Sample Comment	Rest. Digest	Status	Observation	Result Label	Result Color
Dd Soni 1:7	8Cycles	<input type="checkbox"/>	✓			
SM40 Soni 1:7	8Cycles	<input type="checkbox"/>	✓			
SM23 Soni 1:7	8Cycles	<input type="checkbox"/>	✓			
SP37 Soni 1:7	8Cycles	<input type="checkbox"/>	✓			
SP13 Soni 1:7	8Cycles	<input type="checkbox"/>	✓			
HD22 Soni 1:7	8Cycles	<input type="checkbox"/>	✓			
HD23 Soni 1:7	8Cycles	<input type="checkbox"/>	✓			
HD24 Soni 1:7	8Cycles	<input type="checkbox"/>	✓			
HD25 Soni 1:7	8Cycles	<input type="checkbox"/>	✓			
HD26 Soni 1:7	8Cycles	<input type="checkbox"/>	✓			
HD27 Soni 1:7	8Cycles	<input type="checkbox"/>	✓			
Ladder		<input type="checkbox"/>	✓			

Chip Lot #

Reagent Kit Lot #

Chip Comments :

Assay Class: High Sensitivity DNA Assay
Data Path: C:\...ents and Settings\Bioanalyzer\2013-12-13\2013-12-13_001.xad

Created: 12/13/2013 9:50:31 AM
Modified: 12/13/2013 10:33:08 AM

Electrophoresis Assay Details

General Analysis Settings

Number of Available Sample and Ladder Wells (Max.) : 12
Minimum Visible Range [s] : 32
Maximum Visible Range [s] : 138
Start Analysis Time Range [s] : 33
End Analysis Time Range [s] : 137.5
Ladder Concentration [pg/μl] : 1950
Uses Standard Area for Ladder Fragments
Lower Marker Concentration [pg/μl] : 125
Upper Marker Concentration [pg/μl] : 75
Used Upper Marker for Quantitation
Standard Curve Fit is Point to Point
Show Data Aligned to Lower and Upper Marker

Integrator Settings

Integration Start Time [s] : 33.05
Integration End Time [s] : 137
Slope Threshold : 0.8
Height Threshold [FU] : 5
Area Threshold : 0.1
Width Threshold [s] : 0.6
Baseline Plateau [s] : 0.5

Filter Settings

Filter Width [s] : 0.5
Polynomial Order : 4

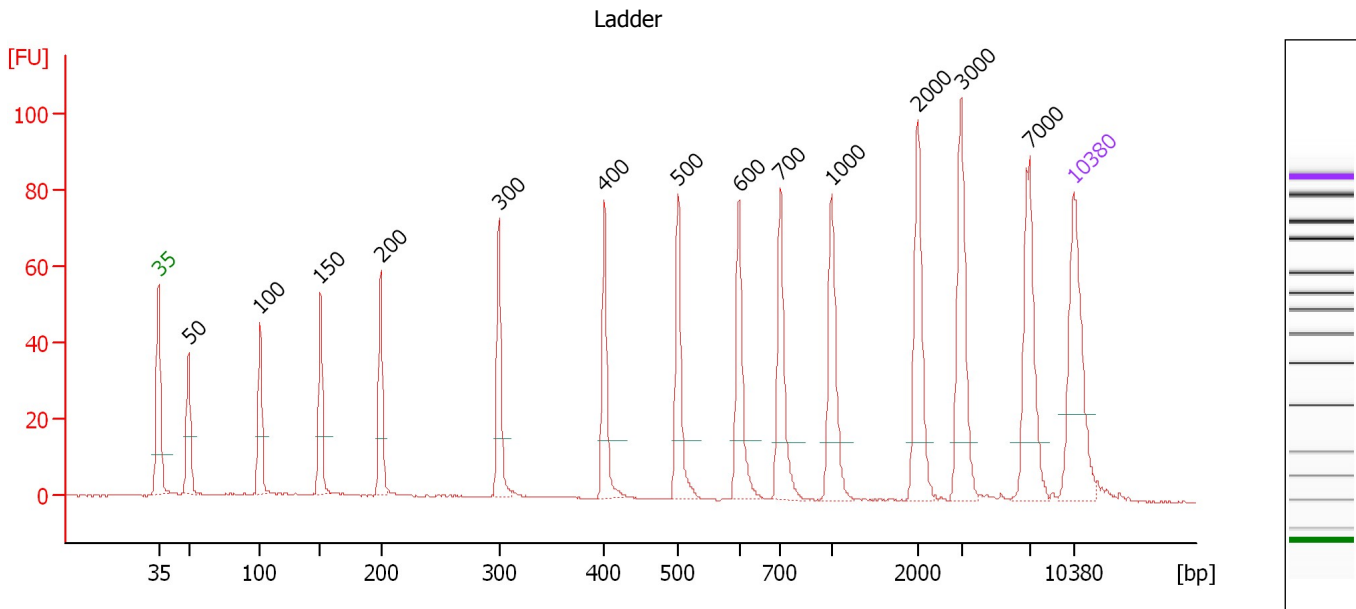
Ladder

Ladder Peak	Size	Area
1	35	160
2	50	210
3	100	208
4	150	221
5	200	242
6	300	270
7	400	305
8	500	306
9	600	336
10	700	321
11	1000	366
12	2000	413
13	3000	411
14	7000	400
15	10380	214

Assay Class: High Sensitivity DNA Assay
 Data Path: C:\...ents and Settings\Bioanalyzer\2013-12-13\2013-12-13_001.xad

Created: 12/13/2013 9:50:31 AM
 Modified: 12/13/2013 10:33:08 AM

Electropherogram Summary



Overall Results for Ladder

Noise: 0.2

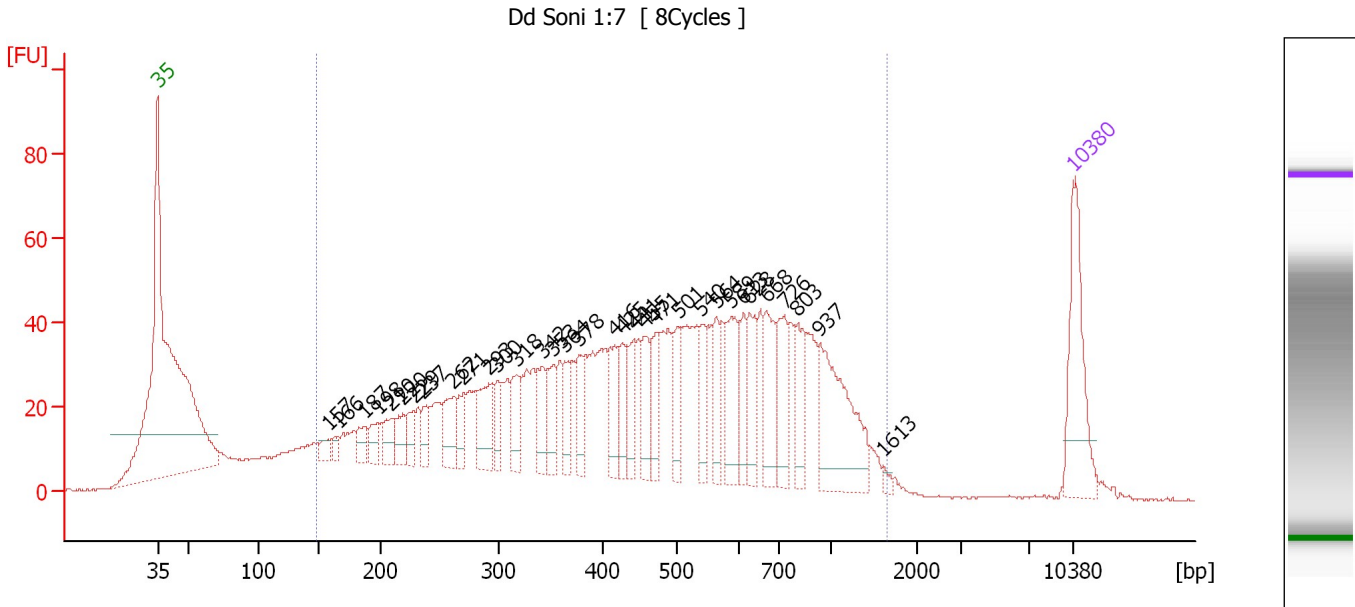
Peak table for Ladder

Peak	Aligned Migration Time [s]	Size [bp]	Conc. [pg/μl]	Molarity [pmol/l]	Observations
1	43.00	35	125.00	5,411.3	Lower Marker
2	45.30	50	150.00	4,545.5	Ladder Peak
3	50.73	100	150.00	2,272.7	Ladder Peak
4	55.38	150	150.00	1,515.2	Ladder Peak
5	59.98	200	150.00	1,136.4	Ladder Peak
6	69.01	300	150.00	757.6	Ladder Peak
7	77.09	400	150.00	568.2	Ladder Peak
8	82.73	500	150.00	454.5	Ladder Peak
9	87.38	600	150.00	378.8	Ladder Peak
10	90.55	700	150.00	324.7	Ladder Peak
11	94.46	1,000	150.00	227.3	Ladder Peak
12	101.01	2,000	150.00	113.6	Ladder Peak
13	104.36	3,000	150.00	75.8	Ladder Peak
14	109.57	7,000	150.00	32.5	Ladder Peak
15	113.00	10,380	75.00	10.9	Upper Marker

Assay Class: High Sensitivity DNA Assay
 Data Path: C:\...ents and Settings\Bioanalyzer\2013-12-13\2013-12-13_001.xad

Created: 12/13/2013 9:50:31 AM
 Modified: 12/13/2013 10:33:08 AM

Electropherogram Summary Continued ...



Overall Results for sample 1 : Dd Soni 1:7

Number of peaks found: 33 Corr. Area 1: 1,712.1
 Noise: 0.2

Peak table for sample 1 : Dd Soni 1:7

Peak	Aligned Migration Time [s]	Size [bp]	Conc. [pg/μl]	Molarity [pmol/l]	Observations
1	43.00	35	125.00	5,411.3	Lower Marker
2	56.00	157	14.12	136.5	
3	56.83	166	10.18	93.1	
4	58.79	187	21.39	173.3	
5	59.83	198	21.70	165.7	
6	60.84	210	27.65	199.9	
7	61.75	220	24.35	168.0	
8	62.58	229	21.58	142.9	
9	63.28	237	22.13	141.7	
10	65.55	262	41.12	238.1	
11	66.38	271	28.51	159.5	
12	68.34	293	57.32	296.9	
13	68.99	300	26.08	131.8	
14	70.48	318	34.93	166.3	
15	72.40	342	36.19	160.4	
16	73.27	353	34.01	146.1	
17	74.14	364	28.54	119.0	
18	75.27	378	37.92	152.2	
19	77.98	416	41.31	150.5	
20	78.50	425	34.99	124.7	
21	79.42	441	32.88	112.9	
22	80.20	455	38.62	128.6	
23	81.07	471	36.64	118.0	
24	82.78	501	35.05	106.0	
25	84.61	540	34.15	95.8	

Assay Class: High Sensitivity DNA Assay
 Data Path: C:\...ents and Settings\Bioanalyzer\2013-12-13\2013-12-13_001.xad

Created: 12/13/2013 9:50:31 AM
 Modified: 12/13/2013 10:33:08 AM

Electropherogram Summary Continued ...

... Peak table for sample 1 : Dd Soni 1:7

Peak	Aligned Migration Time [s]	Size [bp]	Conc. [pg/μl]	Molarity [pmol/l]	Observations
26	85.70	564	31.58	84.9	
27	86.88	589	54.54	140.3	
28	87.79	613	30.90	76.4	
29	88.27	628	43.31	104.5	
30	89.54	668	53.28	120.8	
31	90.89	726	49.77	103.9	
32	91.89	803	40.98	77.3	
33	93.64	937	113.51	183.6	
34	98.48	1,613	4.26	4.0	
35	▶ 113.00	10,380	75.00	10.9	Upper Marker

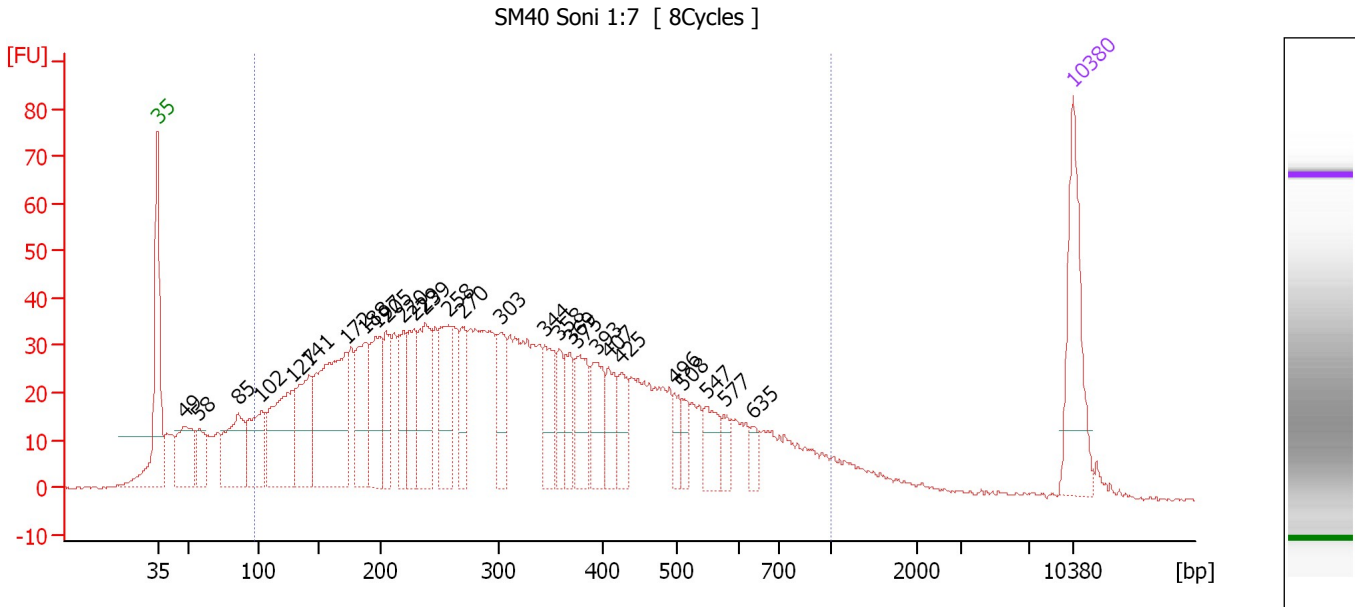
Region table for sample 1 : Dd Soni 1:7

From [bp]	To [bp]	Average Size [bp]	Molarity [pmol/l]	Conc. [pg/μl]	Corr. Area	% of Total	Size distribution in CV [%]	Color
148	1,655	519	9,552.7	2,254.34	1,712.1	91	52.5	■

Assay Class: High Sensitivity DNA Assay
 Data Path: C:\...ents and Settings\Bioanalyzer\2013-12-13\2013-12-13_001.xad

Created: 12/13/2013 9:50:31 AM
 Modified: 12/13/2013 10:33:08 AM

Electropherogram Summary Continued ...



Setpoint Deviations for sample 2 : SM40 Soni 1:7

Height Threshold [FU] : 12

Overall Results for sample 2 : SM40 Soni 1:7

Number of peaks found: 28 Corr. Area 1: 1,677.3
 Noise: 0.2

Peak table for sample 2 : SM40 Soni 1:7

Peak	Aligned Migration Time [s]	Size [bp]	Conc. [pg/μl]	Molarity [pmol/l]	Observations
1	43.00	35	125.00	5,411.3	Lower Marker
2	45.09	49	75.52	2,351.9	
3	46.14	58	37.12	974.1	
4	49.15	85	95.10	1,685.6	
5	50.94	102	81.89	1,213.0	
6	53.26	127	134.94	1,607.6	
7	54.56	141	98.82	1,059.9	
8	57.40	172	205.12	1,806.8	
9	58.84	188	88.26	712.6	
10	59.67	197	89.25	687.7	
11	60.46	205	48.58	358.5	
12	61.77	220	54.45	375.3	
13	62.59	229	64.85	429.1	
14	63.47	239	93.15	591.5	
15	65.26	258	82.50	483.7	
16	66.30	270	42.81	240.2	
17	69.27	303	55.57	277.7	
18	72.59	344	53.00	233.2	
19	73.68	358	29.69	125.7	
20	74.55	369	36.86	151.5	
21	75.08	375	56.20	227.0	
22	76.56	393	51.11	196.8	

Assay Class: High Sensitivity DNA Assay
 Data Path: C:\...ents and Settings\Bioanalyzer\2013-12-13\2013-12-13_001.xad


Created: 12/13/2013 9:50:31 AM
 Modified: 12/13/2013 10:33:08 AM

Electropherogram Summary Continued ...

... Peak table for sample 2 : SM40 Soni 1:7

Peak	Aligned Migration Time [s]	Size [bp]	Conc. [pg/ μ l]	Molarity [pmol/l]	Observations
23	77.48	407	35.26	131.3	
24	78.48	425	32.09	114.5	
25	82.50	496	18.31	56.0	
26	83.11	508	16.03	47.8	
27	84.94	547	32.75	90.6	
28	86.29	577	13.61	35.8	
29	88.47	635	12.72	30.4	
30	113.00	10,380	75.00	10.9	Upper Marker

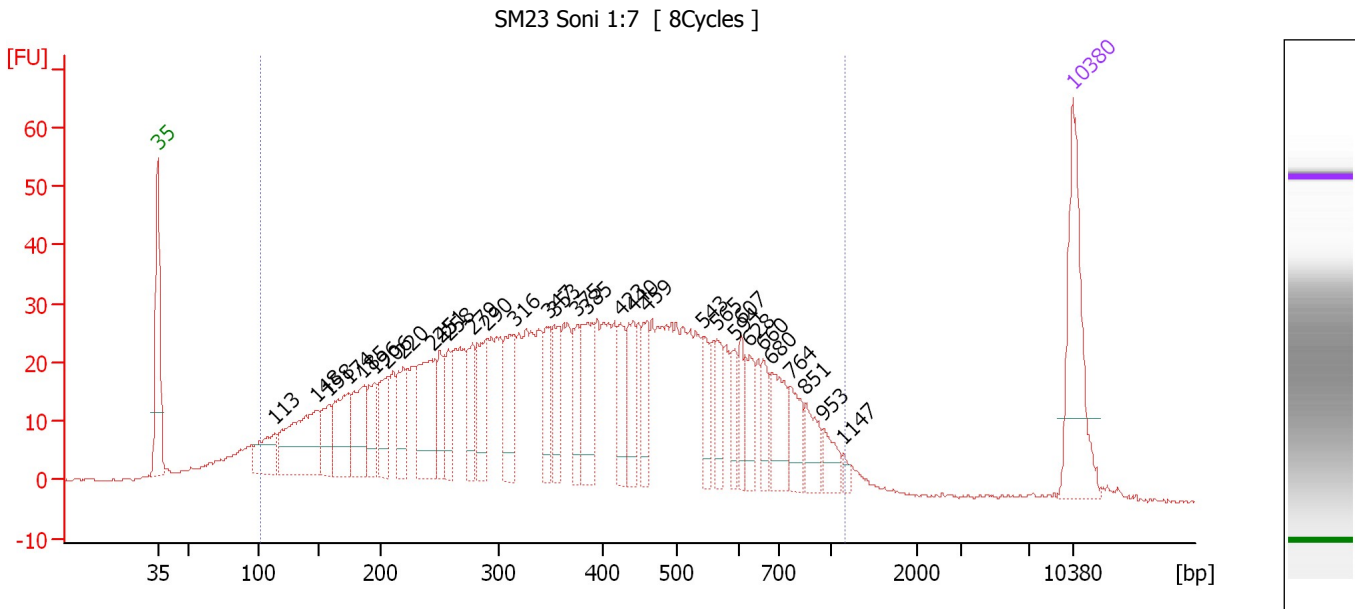
Region table for sample 2 : SM40 Soni 1:7

From [bp]	To [bp]	Average Size [bp]	Molarity [pmol/l]	Conc. [pg/ μ l]	Corr. Area	% of Total	Size distribution in CV [%]	Color
96	1,000	336	15,321.9	2,362.51	1,677.3	86	50.2	

Assay Class: High Sensitivity DNA Assay
 Data Path: C:\...ents and Settings\Bioanalyzer\2013-12-13\2013-12-13_001.xad

Created: 12/13/2013 9:50:31 AM
 Modified: 12/13/2013 10:33:08 AM

Electropherogram Summary Continued ...



Overall Results for sample 3 : SM23 Soni 1:7

Number of peaks found: 32 Corr. Area 1: 1,355.6
 Noise: 0.2

Peak table for sample 3 : SM23 Soni 1:7

Peak	Aligned Migration Time [s]	Size [bp]	Conc. [pg/μl]	Molarity [pmol/l]	Observations
1	43.00	35	125.00	5,411.3	Lower Marker
2	51.96	113	45.50	608.6	
3	55.22	148	108.11	1,104.7	
4	56.14	158	35.11	336.1	
5	57.59	174	63.71	554.6	
6	58.64	185	59.92	489.4	
7	59.61	196	32.71	252.8	
8	60.53	206	42.83	314.8	
9	61.81	220	42.78	294.3	
10	64.00	245	80.11	496.3	
11	64.58	251	35.62	215.1	
12	65.19	258	33.24	195.4	
13	67.08	279	33.11	180.1	
14	68.13	290	51.18	267.1	
15	70.29	316	50.76	243.5	
16	72.84	347	34.94	152.4	
17	73.32	353	34.82	149.3	
18	75.08	375	30.85	124.6	
19	75.87	385	54.67	215.2	
20	78.37	423	33.69	120.7	
21	79.34	440	35.82	123.4	
22	80.39	459	31.17	103.0	
23	84.75	543	23.99	66.9	
24	85.76	565	26.29	70.5	
25	87.12	594	20.65	52.6	

Assay Class: High Sensitivity DNA Assay
 Data Path: C:\...ents and Settings\Bioanalyzer\2013-12-13\2013-12-13_001.xad

Created: 12/13/2013 9:50:31 AM
 Modified: 12/13/2013 10:33:08 AM

Electropherogram Summary Continued ...

... Peak table for sample 3 : SM23 Soni 1:7

Peak	Aligned Migration Time [s]	Size [bp]	Conc. [pg/μl]	Molarity [pmol/l]	Observations
26	87.60	607	20.84	52.0	
27	88.26	628	25.45	61.4	
28	89.27	660	19.96	45.8	
29	89.93	680	39.85	88.7	
30	91.38	764	27.64	54.8	
31	92.52	851	23.96	42.6	
32	93.84	953	17.44	27.7	
33	95.42	1,147	4.11	5.4	
34	113.00	10,380	75.00	10.9	Upper Marker

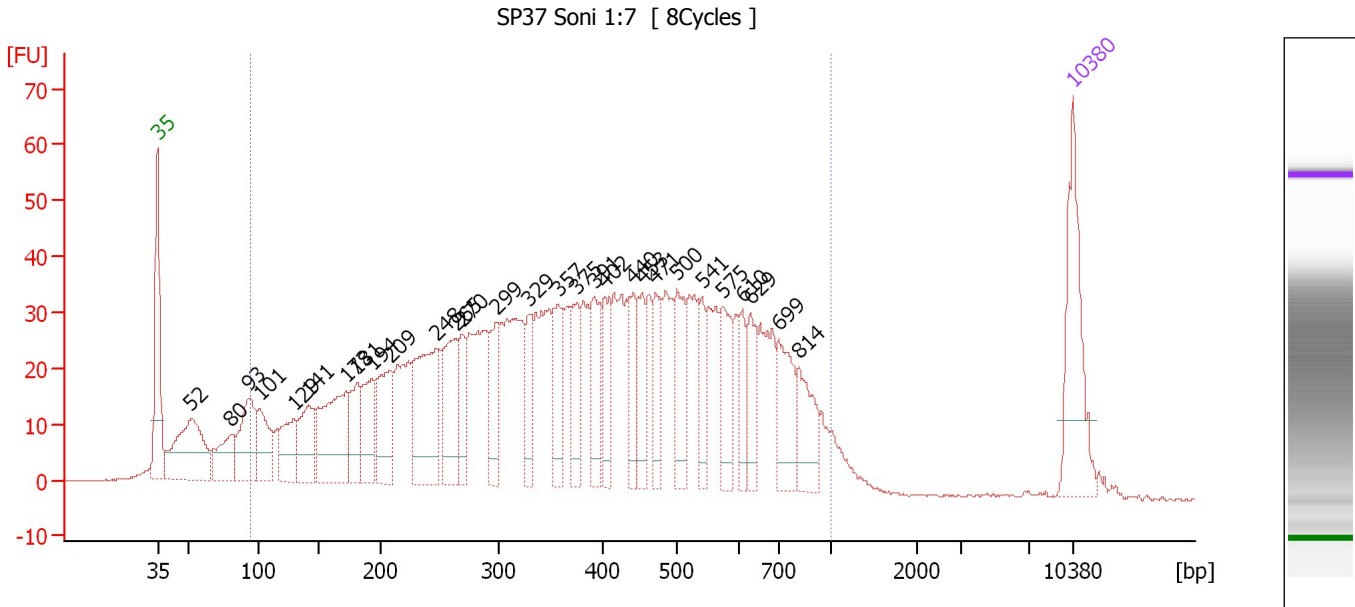
Region table for sample 3 : SM23 Soni 1:7

From [bp]	To [bp]	Average Size [bp]	Molarity [pmol/l]	Conc. [pg/μl]	Corr. Area	% of Total	Size distribution in CV [%]	Color
101	1,156	406	11,322.8	2,106.11	1,355.6	95	46.9	■

Assay Class: High Sensitivity DNA Assay
 Data Path: C:\...ents and Settings\Bioanalyzer\2013-12-13\2013-12-13_001.xad

Created: 12/13/2013 9:50:31 AM
 Modified: 12/13/2013 10:33:08 AM

Electropherogram Summary Continued ...



Overall Results for sample 4 : SP37 Soni 1:7

Number of peaks found: 29 Corr. Area 1: 1,629.2
 Noise: 0.2

Peak table for sample 4 : SP37 Soni 1:7

Peak	Aligned Migration Time [s]	Size [bp]	Conc. [pg/μl]	Molarity [pmol/l]	Observations
1	43.00	35	125.00	5,411.3	Lower Marker
2	45.57	52	128.92	3,721.8	
3	48.54	80	52.96	1,004.9	
4	50.00	93	81.87	1,329.2	
5	50.80	101	57.67	866.9	
6	53.42	129	51.38	603.8	
7	54.57	141	58.21	624.0	
8	57.45	173	123.50	1,084.4	
9	58.25	181	46.59	389.5	
10	59.40	194	57.07	446.3	
11	60.78	209	79.84	579.2	
12	64.28	248	126.34	773.1	
13	65.83	265	81.15	464.4	
14	66.27	270	38.79	217.9	
15	68.93	299	53.46	270.8	
16	71.37	329	38.38	176.6	
17	73.63	357	52.42	222.3	
18	75.05	375	48.24	195.0	
19	76.38	391	53.23	206.1	
20	77.18	402	41.36	156.0	
21	79.35	440	38.38	132.1	
22	80.06	453	37.80	126.5	
23	81.08	471	37.48	120.6	
24	82.72	500	52.43	159.0	
25	84.63	541	31.09	87.1	

Assay Class: High Sensitivity DNA Assay
 Data Path: C:\...ents and Settings\Bioanalyzer\2013-12-13\2013-12-13_001.xad


Created: 12/13/2013 9:50:31 AM
 Modified: 12/13/2013 10:33:08 AM

Electropherogram Summary Continued ...

... Peak table for sample 4 : SP37 Soni 1:7

Peak	Aligned Migration Time [s]	Size [bp]	Conc. [pg/μl]	Molarity [pmol/l]	Observations
26	86.22	575	47.44	125.0	
27	87.69	610	26.52	65.9	
28	88.31	629	37.40	90.0	
29	90.52	699	55.52	120.3	
30	92.03	814	44.32	82.5	
31	113.00	10,380	75.00	10.9	Upper Marker

Region table for sample 4 : SP37 Soni 1:7

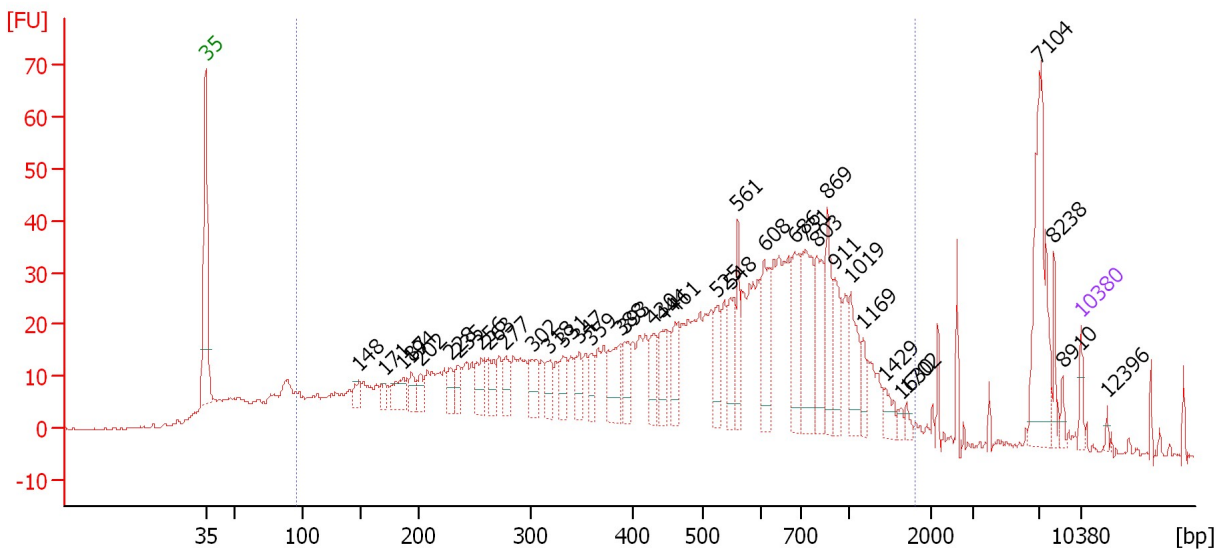
From [bp]	To [bp]	Average Size [bp]	Molarity [pmol/l]	Conc. [pg/μl]	Corr. Area	% of Total	Size distribution in CV [%]	Color
94	1,000	407	13,639.6	2,474.68	1,629.2	91	45.6	

Assay Class: High Sensitivity DNA Assay
 Data Path: C:\...ents and Settings\Bioanalyzer\2013-12-13\2013-12-13_001.xad

Created: 12/13/2013 9:50:31 AM
 Modified: 12/13/2013 10:33:08 AM

Electropherogram Summary Continued ...

SP13 Soni 1:7 [8Cycles]



Overall Results for sample 5 : SP13 Soni 1:7

Number of peaks found: 38 Corr. Area 1: 1,246.3
 Noise: 0.3

Peak table for sample 5 : SP13 Soni 1:7

Peak	Aligned Migration Time [s]	Size [bp]	Conc. [pg/μl]	Molarity [pmol/l]	Observations
1	43.00	35	125.00	5,411.3	Lower Marker
2	55.24	148	140.11	1,429.7	
3	57.28	171	106.75	947.6	
4	58.77	187	279.36	2,264.6	
5	59.46	194	154.44	1,204.2	
6	60.18	202	130.68	979.1	
7	62.52	228	159.33	1,057.9	
8	63.16	235	165.26	1,064.3	
9	65.00	256	247.11	1,465.1	
10	65.64	263	208.40	1,202.2	
11	66.96	277	199.00	1,087.4	
12	69.18	302	240.53	1,206.6	
13	70.50	318	189.70	902.7	
14	71.52	331	211.86	969.6	
15	72.84	347	174.94	762.9	
16	73.74	359	175.96	743.7	
17	76.12	388	366.66	1,431.6	
18	76.51	393	226.13	872.2	
19	78.77	430	241.31	850.8	
20	79.58	444	249.69	851.9	
21	80.56	461	298.12	978.8	
22	83.88	525	255.40	737.4	
23	84.95	548	265.47	734.4	
24	85.55	561	304.01	821.8	
25	87.63	608	452.00	1,126.3	

Assay Class: High Sensitivity DNA Assay
 Data Path: C:\...ents and Settings\Bioanalyzer\2013-12-13\2013-12-13_001.xad


Created: 12/13/2013 9:50:31 AM
 Modified: 12/13/2013 10:33:08 AM

Electropherogram Summary Continued ...

... Peak table for sample 5 : SP13 Soni 1:7

Peak	Aligned Migration Time [s]	Size [bp]	Conc. [pg/μl]	Molarity [pmol/l]	Observations
26	90.11	686	472.81	1,044.2	
27	90.96	731	594.66	1,231.7	
28	91.90	803	458.51	864.6	
29	92.75	869	415.04	723.7	
30	93.30	911	308.34	512.6	
31	94.58	1,019	347.31	516.3	
32	95.56	1,169	137.11	177.8	
33	97.27	1,429	120.89	128.2	
34	98.59	1,630	39.77	37.0	
35	99.06	1,702	43.29	38.5	
36	109.67	7,104	867.51	185.0	
37	110.83	8,238	106.69	19.6	
38	111.51	8,910	53.31	9.1	
39	113.00	10,380	75.00	10.9	Upper Marker
40	115.05	12,396	0.00	0.0	

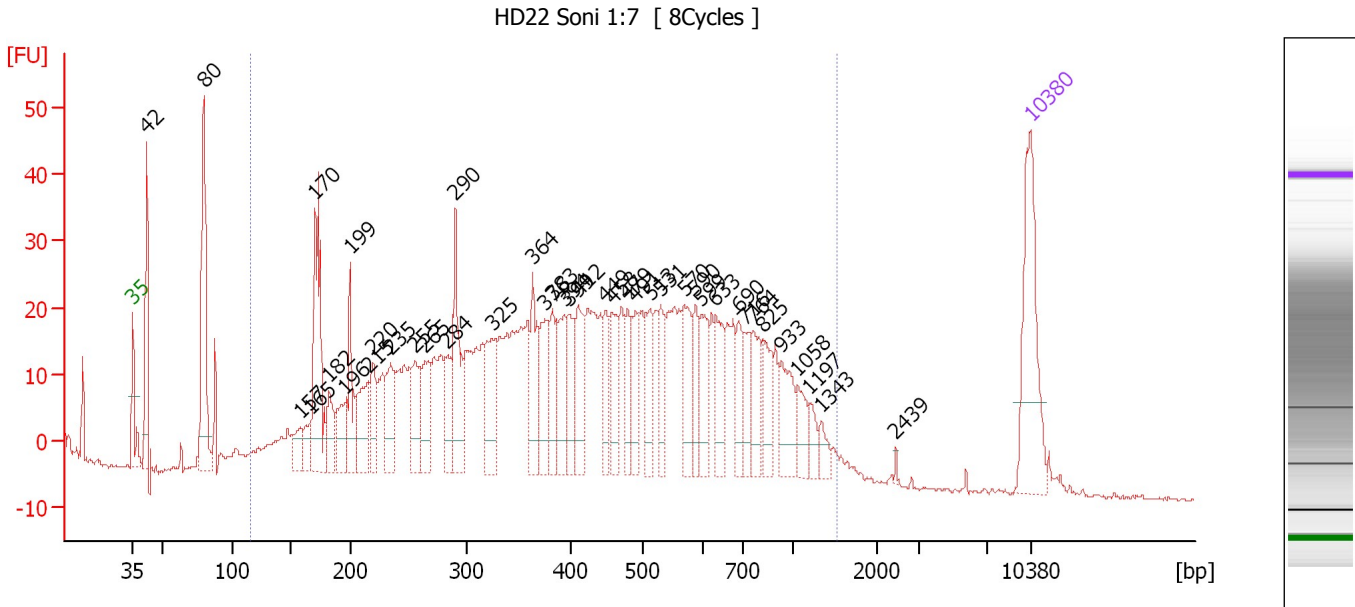
Region table for sample 5 : SP13 Soni 1:7

From [bp]	To [bp]	Average Size [bp]	Molarity [pmol/l]	Conc. [pg/μl]	Corr. Area	% of Total	Size distribution in CV [%]	Color
95	1,790	540	103,868.1	21,442.04	1,246.3	83	56.7	

Assay Class: High Sensitivity DNA Assay
 Data Path: C:\...ents and Settings\Bioanalyzer\2013-12-13\2013-12-13_001.xad

Created: 12/13/2013 9:50:31 AM
 Modified: 12/13/2013 10:33:08 AM

Electropherogram Summary Continued ...



Overall Results for sample 6 : HD22 Soni 1:7

Number of peaks found: 41 Corr. Area 1: 1,246.5
 Noise: 0.4

Peak table for sample 6 : HD22 Soni 1:7

Peak	Aligned Migration Time [s]	Size [bp]	Conc. [pg/μl]	Molarity [pmol/l]	Observations
1	43.00	35	125.00	5,411.3	Lower Marker
2	44.08	42	93.01	3,351.7	
3	48.53	80	148.16	2,815.7	
4	56.05	157	26.42	254.4	
5	56.80	165	21.12	193.4	
6	57.17	170	123.38	1,102.6	
7	58.34	182	27.55	229.1	
8	59.59	196	35.72	276.5	
9	59.92	199	49.60	377.0	
10	61.37	215	54.04	380.0	
11	61.75	220	34.70	239.5	
12	63.12	235	45.06	290.8	
13	64.95	255	44.47	264.2	
14	65.82	265	43.91	251.4	
15	67.52	284	34.61	184.9	
16	68.15	290	74.15	386.8	
17	71.02	325	53.15	247.9	
18	74.18	364	49.64	206.6	
19	75.13	376	48.41	195.2	
20	75.71	383	33.52	132.6	
21	76.63	394	47.55	182.7	
22	77.04	399	35.02	132.8	
23	77.75	412	45.77	168.4	
24	79.83	449	31.71	107.1	
25	80.37	458	36.25	119.9	

Assay Class: High Sensitivity DNA Assay
 Data Path: C:\...ents and Settings\Bioanalyzer\2013-12-13\2013-12-13_001.xad


Created: 12/13/2013 9:50:31 AM
 Modified: 12/13/2013 10:33:08 AM

Electropherogram Summary Continued ...

... Peak table for sample 6 : HD22 Soni 1:7

Peak	Aligned Migration Time [s]	Size [bp]	Conc. [pg/μl]	Molarity [pmol/l]	Observations
26	81.57	479	30.89	97.6	
27	82.20	491	30.80	95.1	
28	83.32	513	32.43	95.9	
29	84.15	531	29.51	84.3	
30	85.98	570	43.28	115.1	
31	86.90	590	26.86	69.0	
32	87.35	599	33.59	84.9	
33	88.43	633	36.50	87.3	
34	90.22	690	24.27	53.3	
35	90.76	716	23.22	49.1	
36	91.38	764	32.07	63.6	
37	92.17	825	27.10	49.8	
38	93.59	933	35.13	57.0	
39	94.83	1,058	17.81	25.5	
40	95.75	1,197	11.61	14.7	
41	96.71	1,343	9.69	10.9	
42	102.48	2,439	1.68	1.0	
43	113.00	10,380	75.00	10.9	Upper Marker

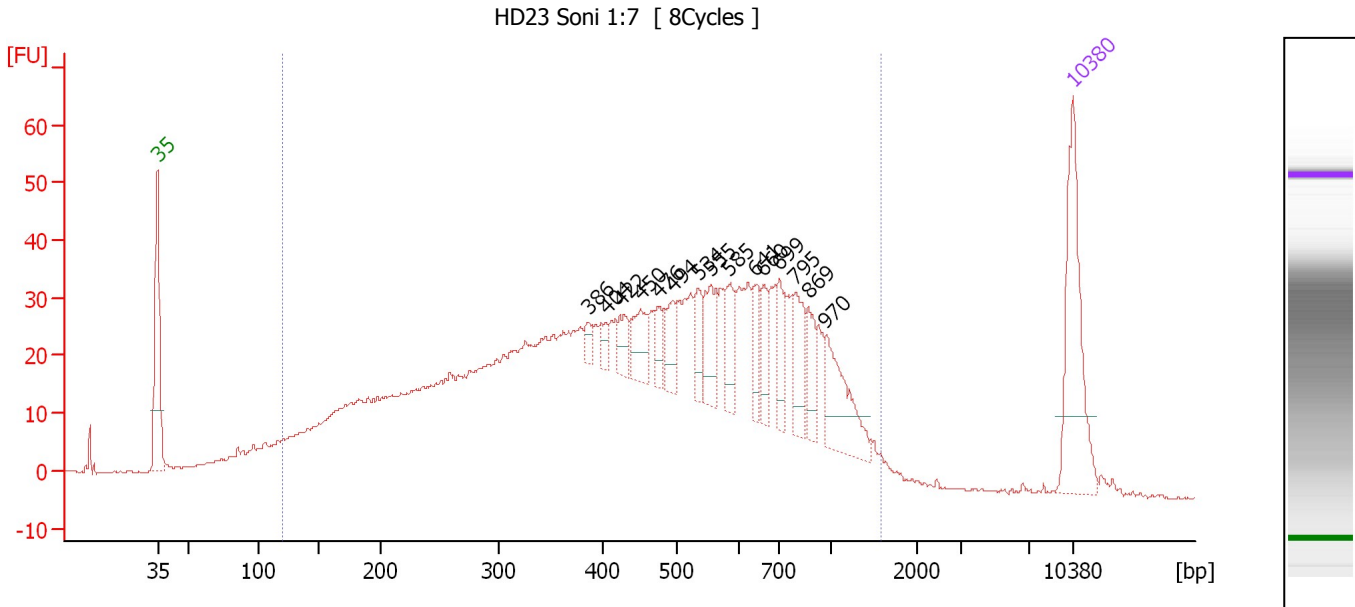
Region table for sample 6 : HD22 Soni 1:7

From [bp]	To [bp]	Average Size [bp]	Molarity [pmol/l]	Conc. [pg/μl]	Corr. Area	% of Total	Size distribution in CV [%]	Color
115	1,531	479	10,142.4	2,209.60	1,246.5	90	51.4	

Assay Class: High Sensitivity DNA Assay
 Data Path: C:\...ents and Settings\Bioanalyzer\2013-12-13\2013-12-13_001.xad

Created: 12/13/2013 9:50:31 AM
 Modified: 12/13/2013 10:33:08 AM

Electropherogram Summary Continued ...



Overall Results for sample 7 : HD23 Soni 1:7

Number of peaks found: 15 Corr. Area 1: 1,399.5
 Noise: 0.1

Peak table for sample 7 : HD23 Soni 1:7

Peak	Aligned Migration Time [s]	Size [bp]	Conc. [pg/μl]	Molarity [pmol/l]	Observations
1	43.00	35	125.00	5,411.3	Lower Marker
2	75.92	386	8.18	32.1	
3	77.29	404	9.29	34.9	
4	78.34	422	17.38	62.4	
5	79.90	450	27.25	91.8	
6	81.36	476	14.30	45.5	
7	82.37	494	23.80	73.1	
8	84.33	534	19.88	56.4	
9	85.29	555	31.65	86.4	
10	86.66	585	25.50	66.1	
11	88.68	641	20.72	49.0	
12	89.27	660	20.97	48.2	
13	90.50	699	26.96	58.5	
14	91.79	795	33.69	64.2	
15	92.75	869	22.72	39.6	
16	94.07	970	50.23	78.4	
17	113.00	10,380	75.00	10.9	Upper Marker

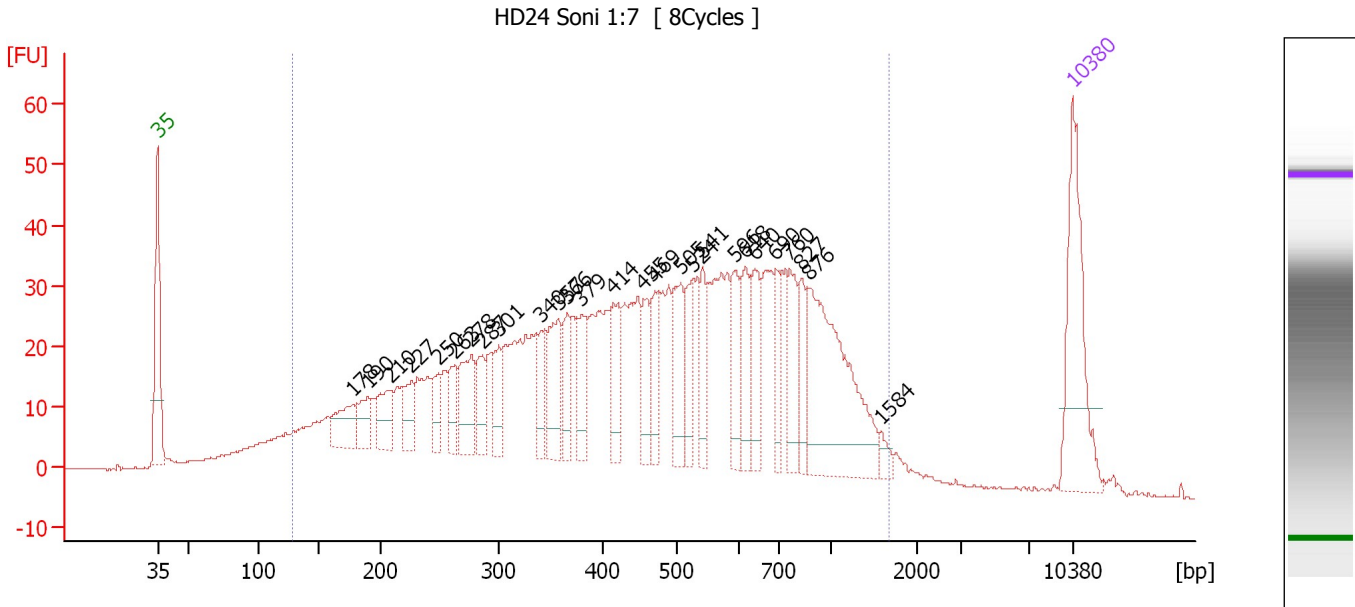
Region table for sample 7 : HD23 Soni 1:7

From [bp]	To [bp]	Average Size [bp]	Molarity [pmol/l]	Conc. [pg/μl]	Corr. Area	% of Total	Size distribution in CV [%]	Color
119	1,576	503	9,221.3	2,039.92	1,399.5	94	52.1	Blue

Assay Class: High Sensitivity DNA Assay
 Data Path: C:\...ents and Settings\Bioanalyzer\2013-12-13\2013-12-13_001.xad

Created: 12/13/2013 9:50:31 AM
 Modified: 12/13/2013 10:33:08 AM

Electropherogram Summary Continued ...



Overall Results for sample 8 : HD24 Soni 1:7

Number of peaks found: 27 Corr. Area 1: 1,406.5
 Noise: 0.2

Peak table for sample 8 : HD24 Soni 1:7

Peak	Aligned Migration Time [s]	Size [bp]	Conc. [pg/μl]	Molarity [pmol/l]	Observations
1	43.00	35	125.00	5,411.3	Lower Marker
2	57.94	178	37.30	317.7	
3	59.09	190	24.29	193.3	
4	60.85	210	33.11	239.3	
5	62.41	227	27.62	184.4	
6	64.49	250	21.12	128.1	
7	65.64	263	22.90	132.1	
8	66.98	278	49.39	269.7	
9	67.81	287	27.83	147.1	
10	69.10	301	29.30	147.4	
11	72.28	340	25.85	115.0	
12	73.62	357	52.54	222.9	
13	74.31	366	27.37	113.4	
14	75.37	379	33.21	132.8	
15	77.86	414	38.20	139.9	
16	80.17	455	32.13	107.1	
17	81.00	469	31.02	100.2	
18	82.98	505	45.16	135.4	
19	83.86	524	31.39	90.7	
20	84.64	541	29.59	82.9	
21	87.18	596	34.39	87.5	
22	87.96	618	34.57	84.7	
23	88.65	640	38.93	92.1	
24	90.22	690	28.78	63.2	
25	91.33	760	37.75	75.3	

Assay Class: High Sensitivity DNA Assay
 Data Path: C:\...ents and Settings\Bioanalyzer\2013-12-13\2013-12-13_001.xad


Created: 12/13/2013 9:50:31 AM
 Modified: 12/13/2013 10:33:08 AM

Electropherogram Summary Continued ...

... Peak table for sample 8 : HD24 Soni 1:7

Peak	Aligned Migration Time [s]	Size [bp]	Conc. [pg/μl]	Molarity [pmol/l]	Observations
26	92.20	827	27.30	50.0	
27	92.85	876	142.26	245.9	
28	98.29	1,584	6.97	6.7	
29	▶ 113.00	10,380	75.00	10.9	Upper Marker

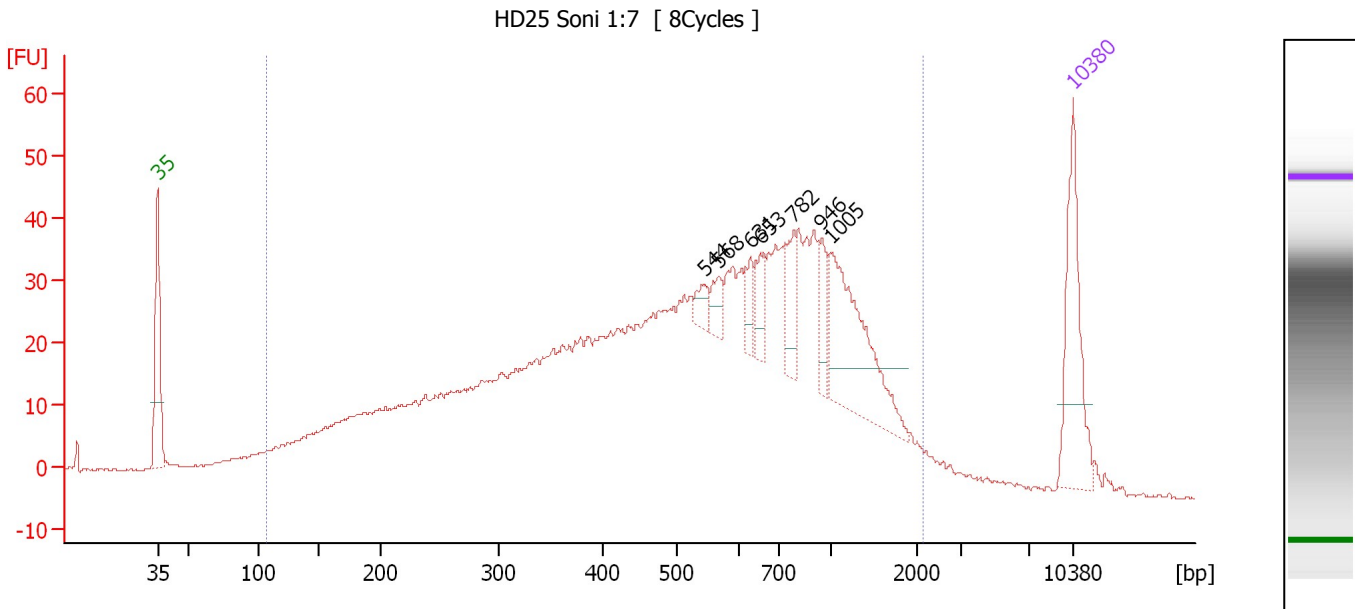
Region table for sample 8 : HD24 Soni 1:7

From [bp]	To [bp]	Average Size [bp]	Molarity [pmol/l]	Conc. [pg/μl]	Corr. Area	% of Total	Size distribution in CV [%]	Color
128	1,676	522	8,642.4	1,984.08	1,406.5	93	54.2	

Assay Class: High Sensitivity DNA Assay
 Data Path: C:\...ents and Settings\Bioanalyzer\2013-12-13\2013-12-13_001.xad

Created: 12/13/2013 9:50:31 AM
 Modified: 12/13/2013 10:33:08 AM

Electropherogram Summary Continued ...



Overall Results for sample 9 : HD25 Soni 1:7

Number of peaks found: 7 Corr. Area 1: 1,359.0
 Noise: 0.2

Peak table for sample 9 : HD25 Soni 1:7

Peak	Aligned Migration Time [s]	Size [bp]	Conc. [pg/μl]	Molarity [pmol/l]	Observations
1	43.00	35	125.00	5,411.3	Lower Marker
2	84.80	544	14.13	39.3	
3	85.91	568	16.38	43.7	
4	88.37	631	16.69	40.1	
5	89.06	653	20.36	47.2	
6	91.61	782	29.72	57.6	
7	93.75	946	26.01	41.7	
8	94.49	1,005	117.10	176.5	
9	113.00	10,380	75.00	10.9	Upper Marker

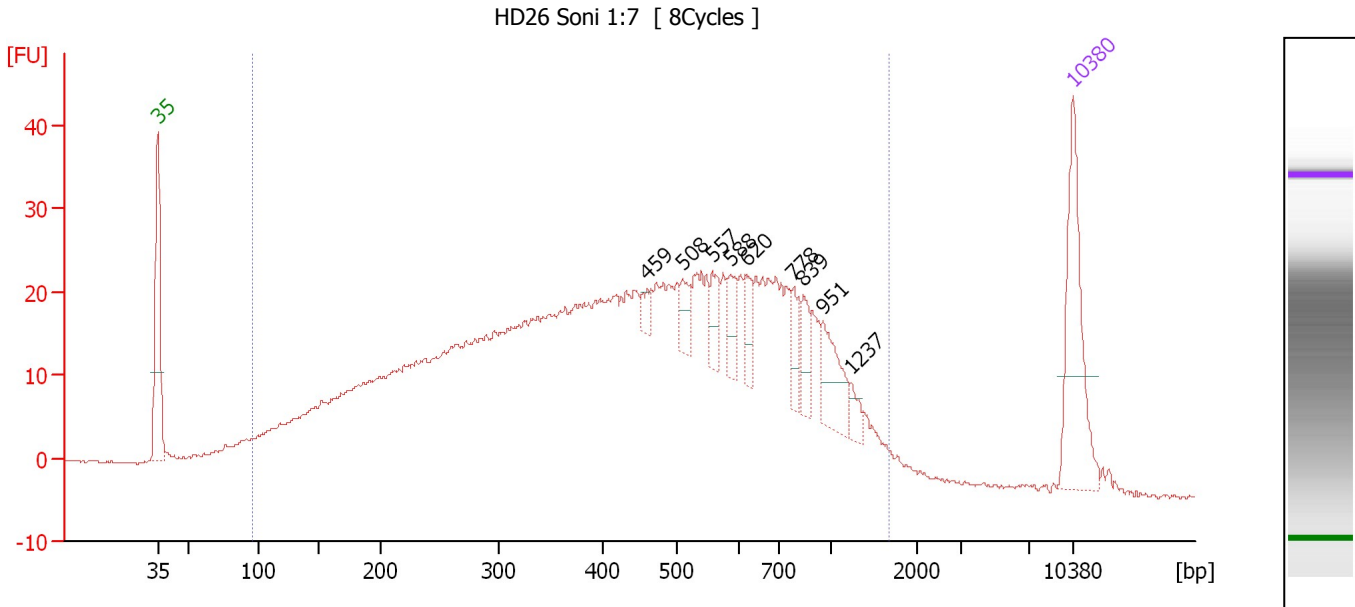
Region table for sample 9 : HD25 Soni 1:7

From [bp]	To [bp]	Average Size [bp]	Molarity [pmol/l]	Conc. [pg/μl]	Corr. Area	% of Total	Size distribution in CV [%]	Color
106	2,131	622	9,604.3	2,318.96	1,359.0	95	61.8	Blue

Assay Class: High Sensitivity DNA Assay
 Data Path: C:\...ents and Settings\Bioanalyzer\2013-12-13\2013-12-13_001.xad

Created: 12/13/2013 9:50:31 AM
 Modified: 12/13/2013 10:33:08 AM

Electropherogram Summary Continued ...



Overall Results for sample 10 : HD26 Soni 1:7

Number of peaks found: 9 Corr. Area 1: 1,055.2
 Noise: 0.2

Peak table for sample 10 : HD26 Soni 1:7

Peak	Aligned Migration Time [s]	Size [bp]	Conc. [pg/μl]	Molarity [pmol/l]	Observations
1	43.00	35	125.00	5,411.3	Lower Marker
2	80.43	459	9.10	30.0	
3	83.10	508	17.18	51.2	
4	85.39	557	18.40	50.0	
5	86.84	588	18.09	46.6	
6	88.01	620	17.92	43.8	
7	91.57	778	19.80	38.5	
8	92.36	839	18.58	33.5	
9	93.82	951	37.92	60.4	
10	96.01	1,237	9.40	11.5	
11	113.00	10,380	75.00	10.9	Upper Marker

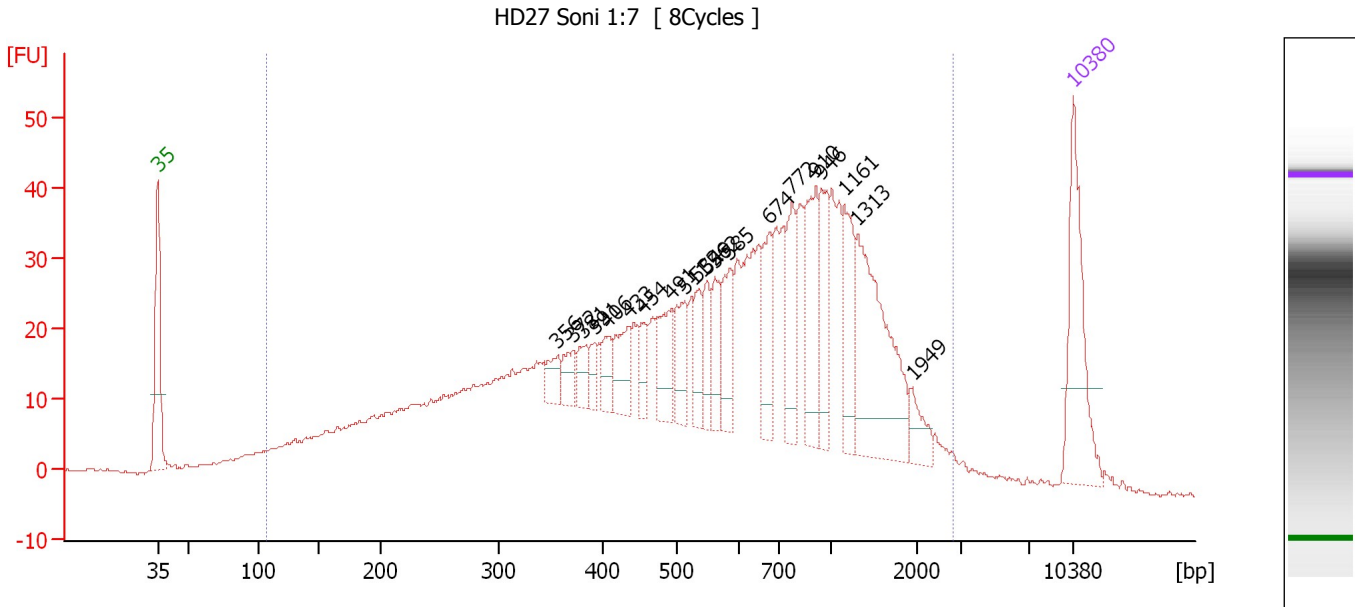
Region table for sample 10 : HD26 Soni 1:7

From [bp]	To [bp]	Average Size [bp]	Molarity [pmol/l]	Conc. [pg/μl]	Corr. Area	% of Total	Size distribution in CV [%]	Color
96	1,682	493	10,805.4	2,242.44	1,055.2	96	55.7	Blue

Assay Class: High Sensitivity DNA Assay
 Data Path: C:\...ents and Settings\Bioanalyzer\2013-12-13\2013-12-13_001.xad

Created: 12/13/2013 9:50:31 AM
 Modified: 12/13/2013 10:33:08 AM

Electropherogram Summary Continued ...



Overall Results for sample 11 : HD27 Soni 1:7

Number of peaks found: 20 Corr. Area 1: 1,271.5
 Noise: 0.2


Peak table for sample 11 : HD27 Soni 1:7

Peak	Aligned Migration Time [s]	Size [bp]	Conc. [pg/μl]	Molarity [pmol/l]	Observations
1	43.00	35	125.00	5,411.3	Lower Marker
2	73.57	356	18.49	78.6	
3	74.80	372	20.29	82.7	
4	75.56	381	19.12	76.0	
5	76.36	391	15.04	58.3	
6	77.41	406	22.20	82.9	
7	78.97	433	37.29	130.4	
8	80.16	454	18.83	62.8	
9	82.24	491	43.64	134.6	
10	83.24	511	38.50	114.2	
11	84.23	532	26.82	76.4	
12	84.99	549	27.54	76.1	
13	85.61	562	28.05	75.7	
14	86.70	585	39.41	102.0	
15	89.73	674	43.95	98.8	
16	91.48	772	48.59	95.4	
17	93.28	910	68.54	114.1	
18	93.76	946	43.36	69.4	
19	95.51	1,161	47.29	61.7	
20	96.51	1,313	131.57	151.9	
21	100.68	1,949	18.17	14.1	
22	113.00	10,380	75.00	10.9	Upper Marker

Assay Class: High Sensitivity DNA Assay
Data Path: C:\...ents and Settings\Bioanalyzer\2013-12-13\2013-12-13_001.xad

Created: 12/13/2013 9:50:31 AM
Modified: 12/13/2013 10:33:08 AM

Electropherogram Summary Continued ...**... Region table for sample 11 : HD27 Soni 1:7**

From [bp]	To [bp]	Average Size [bp]	Molarity [pmol/l]	Conc. [pg/μl]	Corr. Area	% of Total	Size distribution in CV [%]	Color
107	2,814	712	9,032.9	2,319.69	1,271.5	96	67.5	

Assay Class: High Sensitivity DNA Assay
Data Path: C:\...ents and Settings\Bioanalyzer\2013-12-13\2013-12-13_001.xad

Created: 12/13/2013 9:50:31 AM
Modified: 12/13/2013 10:33:08 AM

Gel Image

