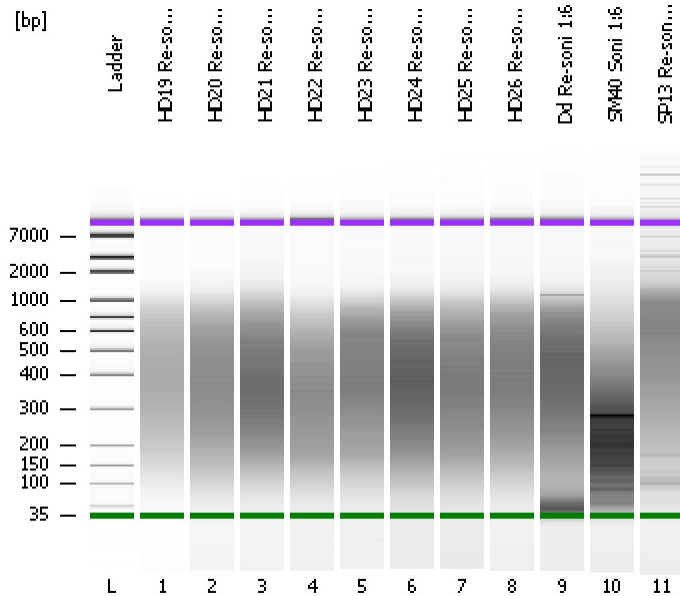


Assay Class: High Sensitivity DNA Assay
Data Path: C:\...ents and Settings\Bioanalyzer\2013-12-13\2013-12-13_004.xad

Created: 12/13/2013 2:18:15 PM
Modified: 12/13/2013 3:05:47 PM

Electrophoresis File Run Summary



Instrument Information:

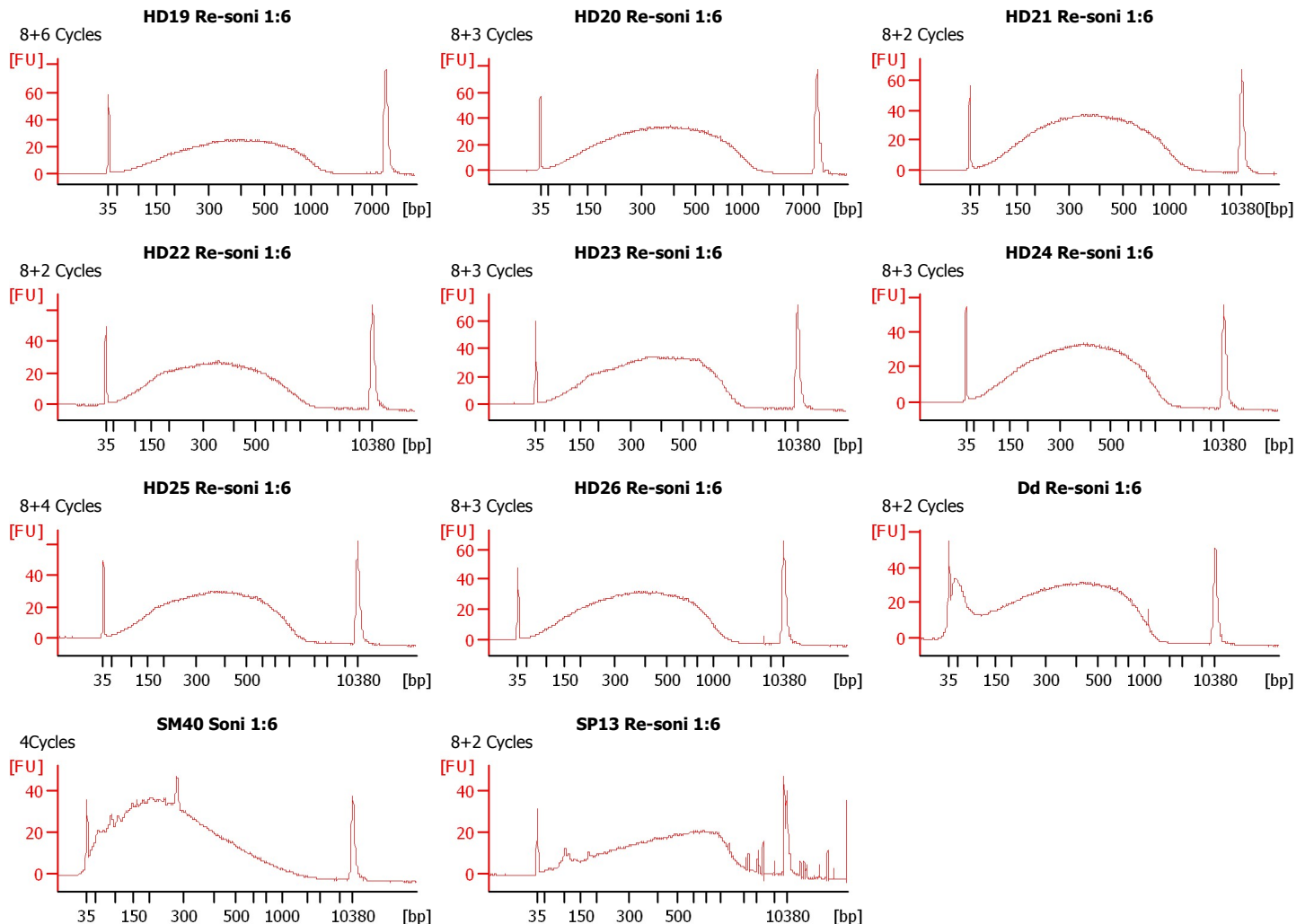
Instrument Name: DE13701086 Firmware: C.01.069
Serial#: DE13701086 Type: G2938B

Assay Information:

Assay Origin Path: C:\Program Files\Agilent\2100 bioanalyzer\2100 expert\assays\dsDNA\High Sensitivity DNA.xsy
Assay Class: High Sensitivity DNA Assay
Version: 1.03
Assay Comments: Copyright © 2003-2010 Agilent Technologies

Chip Information:

Chip Lot #:
Reagent Kit Lot #:
Chip Comments:



Assay Class: High Sensitivity DNA Assay
 Data Path: C:\...ents and Settings\Bioanalyzer\2013-12-13\2013-12-13_004.xad

Created: 12/13/2013 2:18:15 PM
 Modified: 12/13/2013 3:05:47 PM

Electrophoresis File Run Summary (Chip Summary)

Sample Name	Sample Comment	Rest. Digest	Status	Observation	Result Label	Result Color
HD19 Re-soni 1:6	8+6 Cycles	<input type="checkbox"/>	✓			
HD20 Re-soni 1:6	8+3 Cycles	<input type="checkbox"/>	✓			
HD21 Re-soni 1:6	8+2 Cycles	<input type="checkbox"/>	✓			
HD22 Re-soni 1:6	8+2 Cycles	<input type="checkbox"/>	✓			
HD23 Re-soni 1:6	8+3 Cycles	<input type="checkbox"/>	✓			
HD24 Re-soni 1:6	8+3 Cycles	<input type="checkbox"/>	✓			
HD25 Re-soni 1:6	8+4 Cycles	<input type="checkbox"/>	✓			
HD26 Re-soni 1:6	8+3 Cycles	<input type="checkbox"/>	✓			
Dd Re-soni 1:6	8+2 Cycles	<input type="checkbox"/>	✓			
SM40 Soni 1:6	4Cycles	<input type="checkbox"/>	✓			
SP13 Re-soni 1:6	8+2 Cycles	<input type="checkbox"/>	✓			
Ladder		<input type="checkbox"/>	✓			

Chip Lot #

Reagent Kit Lot #

Chip Comments :

Assay Class: High Sensitivity DNA Assay
Data Path: C:\...ents and Settings\Bioanalyzer\2013-12-13\2013-12-13_004.xad

Created: 12/13/2013 2:18:15 PM
Modified: 12/13/2013 3:05:47 PM

Electrophoresis Assay Details

General Analysis Settings

Number of Available Sample and Ladder Wells (Max.) : 12
Minimum Visible Range [s] : 32
Maximum Visible Range [s] : 138
Start Analysis Time Range [s] : 33
End Analysis Time Range [s] : 137.5
Ladder Concentration [pg/ μ l] : 1950
Uses Standard Area for Ladder Fragments
Lower Marker Concentration [pg/ μ l] : 125
Upper Marker Concentration [pg/ μ l] : 75
Used Upper Marker for Quantitation
Standard Curve Fit is Point to Point
Show Data Aligned to Lower and Upper Marker

Integrator Settings

Integration Start Time [s] : 33.05
Integration End Time [s] : 137
Slope Threshold : 0.8
Height Threshold [FU] : 5
Area Threshold : 0.1
Width Threshold [s] : 0.6
Baseline Plateau [s] : 0.5

Filter Settings

Filter Width [s] : 0.5
Polynomial Order : 4

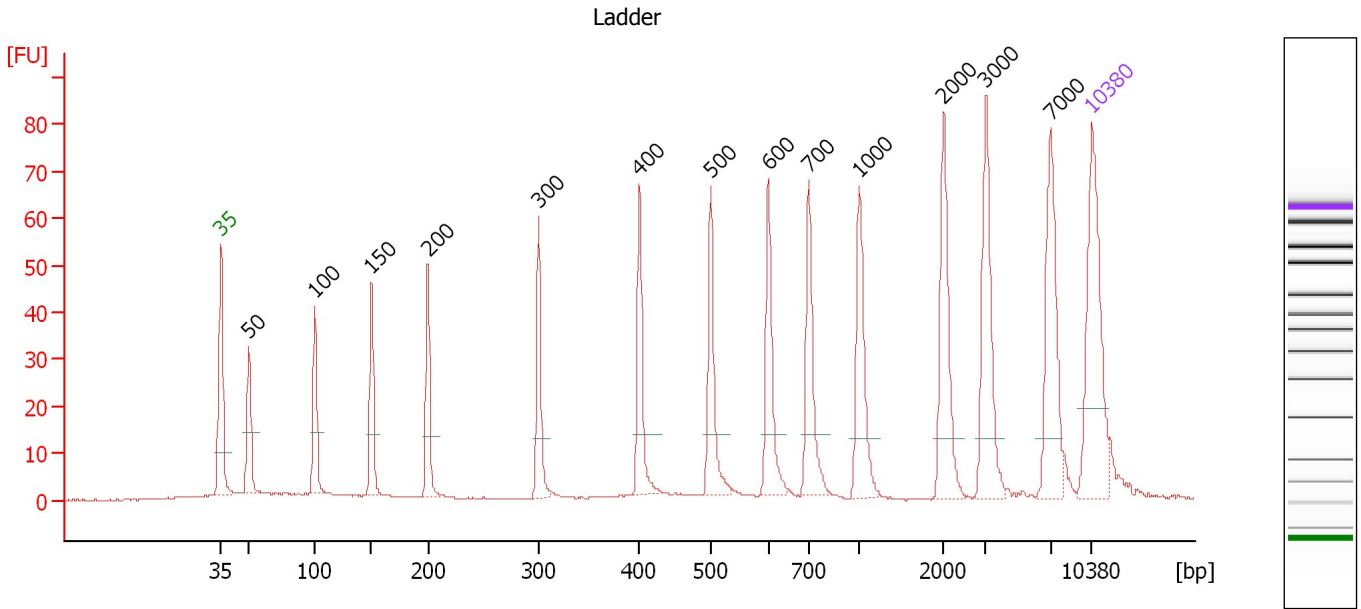
Ladder

Ladder Peak	Size	Area
1	35	160
2	50	210
3	100	208
4	150	221
5	200	242
6	300	270
7	400	305
8	500	306
9	600	336
10	700	321
11	1000	366
12	2000	413
13	3000	411
14	7000	400
15	10380	214

Assay Class: High Sensitivity DNA Assay
 Data Path: C:\...ents and Settings\Bioanalyzer\2013-12-13\2013-12-13_004.xad

Created: 12/13/2013 2:18:15 PM
 Modified: 12/13/2013 3:05:47 PM

Electropherogram Summary



Overall Results for Ladder

Noise: 0.1

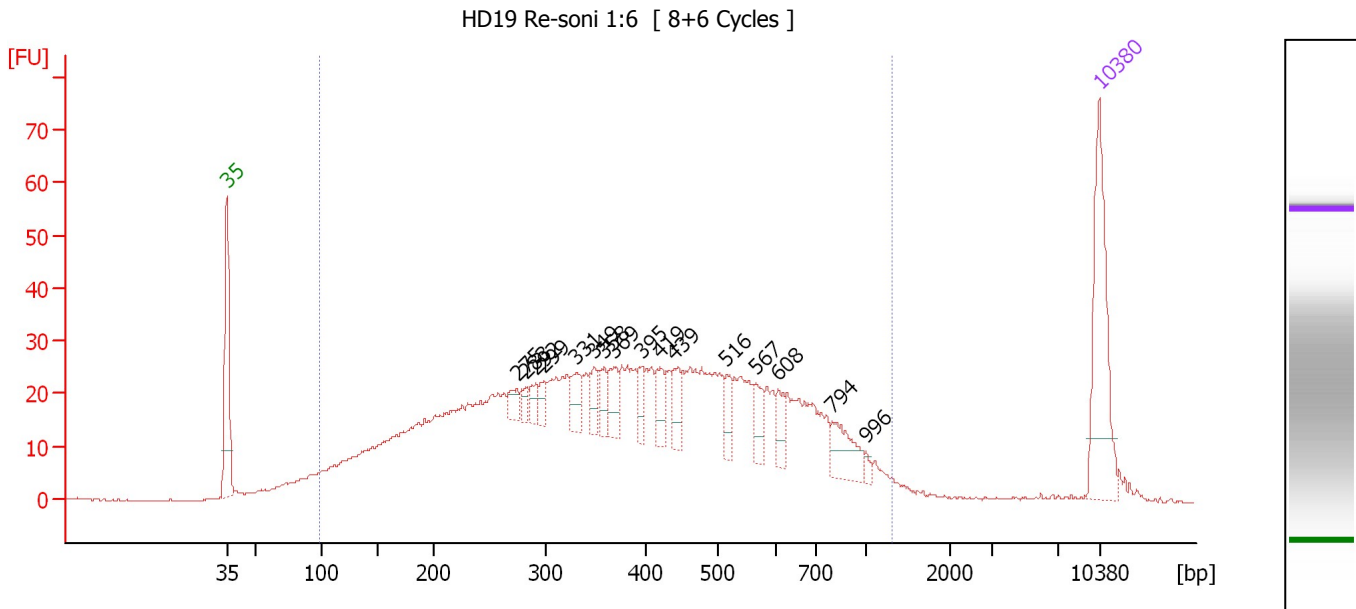
Peak table for Ladder

Peak	Aligned Migration Time [s]	Size [bp]	Conc. [pg/μl]	Molarity [pmol/l]	Observations
1	43.00	35	125.00	5,411.3	Lower Marker
2	45.23	50	150.00	4,545.5	Ladder Peak
3	50.54	100	150.00	2,272.7	Ladder Peak
4	55.09	150	150.00	1,515.2	Ladder Peak
5	59.63	200	150.00	1,136.4	Ladder Peak
6	68.51	300	150.00	757.6	Ladder Peak
7	76.65	400	150.00	568.2	Ladder Peak
8	82.35	500	150.00	454.5	Ladder Peak
9	86.98	600	150.00	378.8	Ladder Peak
10	90.24	700	150.00	324.7	Ladder Peak
11	94.31	1,000	150.00	227.3	Ladder Peak
12	101.08	2,000	150.00	113.6	Ladder Peak
13	104.47	3,000	150.00	75.8	Ladder Peak
14	109.66	7,000	150.00	32.5	Ladder Peak
15	113.00	10,380	75.00	10.9	Upper Marker

Assay Class: High Sensitivity DNA Assay
 Data Path: C:\...ents and Settings\Bioanalyzer\2013-12-13\2013-12-13_004.xad

Created: 12/13/2013 2:18:15 PM
 Modified: 12/13/2013 3:05:47 PM

Electropherogram Summary Continued ...



Overall Results for sample 1 : HD19 Re-soni 1:6

Number of peaks found: 16 Corr. Area 1: 1,190.7
 Noise: 0.2

Peak table for sample 1 : HD19 Re-soni 1:6

Peak	Aligned Migration Time [s]	Size [bp]	Conc. [pg/μl]	Molarity [pmol/l]	Observations
1	43.00	35	125.00	5,411.3	Lower Marker
2	66.28	275	13.12	72.3	
3	66.96	283	9.02	48.3	
4	67.77	292	11.51	59.7	
5	68.46	299	11.83	59.9	
6	71.07	331	22.30	101.9	
7	72.48	349	14.70	63.9	
8	73.25	358	17.10	72.3	
9	74.11	369	21.62	88.8	
10	76.25	395	15.41	59.1	
11	77.74	419	20.91	75.6	
12	78.90	439	21.38	73.7	
13	83.09	516	16.24	47.7	
14	85.44	567	17.99	48.1	
15	87.24	608	15.68	39.1	
16	91.52	794	30.30	57.8	
17	94.26	996	4.43	6.7	
18	113.00	10,380	75.00	10.9	Upper Marker

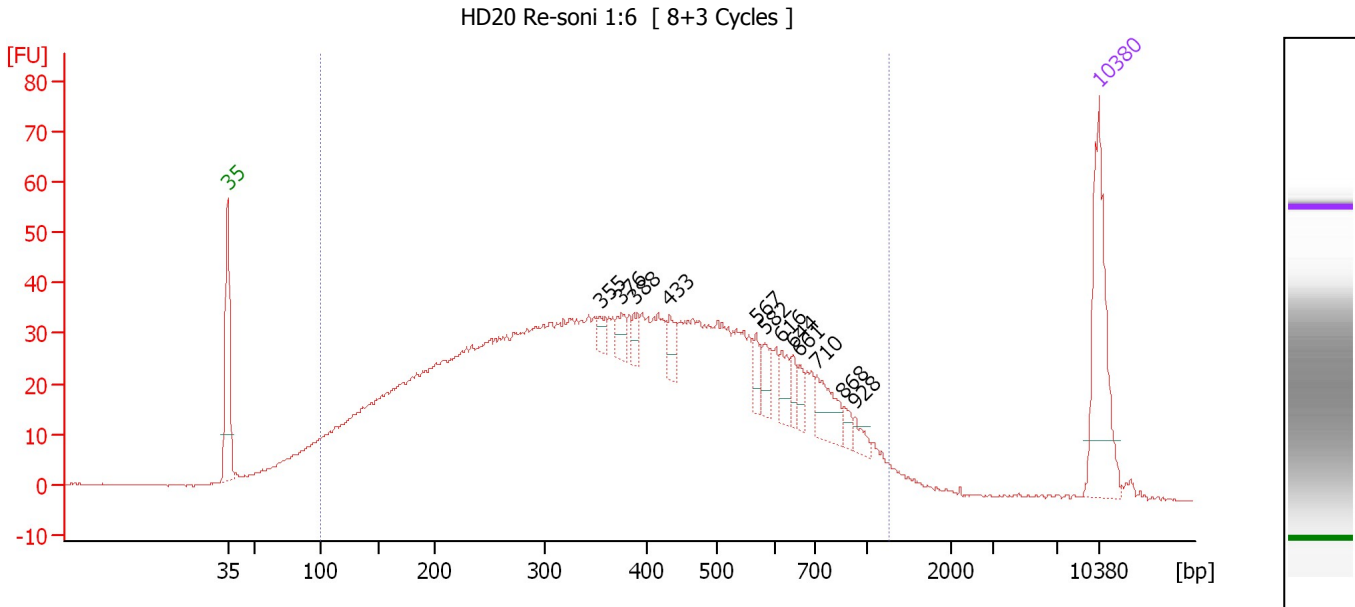
Region table for sample 1 : HD19 Re-soni 1:6

From [bp]	To [bp]	Average Size [bp]	Molarity [pmol/l]	Conc. [pg/μl]	Corr. Area	% of Total	Size distribution in CV [%]	Color
99	1,293	416	9,102.5	1,726.43	1,190.7	95	48.5	Blue

Assay Class: High Sensitivity DNA Assay
 Data Path: C:\...ents and Settings\Bioanalyzer\2013-12-13\2013-12-13_004.xad

Created: 12/13/2013 2:18:15 PM
 Modified: 12/13/2013 3:05:47 PM

Electropherogram Summary Continued ...



Overall Results for sample 2 : HD20 Re-soni 1:6

Number of peaks found: 12 Corr. Area 1: 1,746.5
 Noise: 0.2

Peak table for sample 2 : HD20 Re-soni 1:6

Peak	Aligned Migration Time [s]	Size [bp]	Conc. [pg/μl]	Molarity [pmol/l]	Observations
1	43.00	35	125.00	5,411.3	Lower Marker
2	72.94	355	9.01	38.5	
3	74.66	376	14.06	56.7	
4	75.64	388	10.74	42.0	
5	78.51	433	15.52	54.3	
6	85.45	567	12.10	32.3	
7	86.14	582	14.68	38.2	
8	87.51	616	15.45	38.0	
9	88.41	644	10.77	25.4	
10	88.97	661	9.21	21.1	
11	90.38	710	29.33	62.6	
12	92.52	868	7.49	13.1	
13	93.34	928	7.92	12.9	
14	113.00	10,380	75.00	10.9	Upper Marker

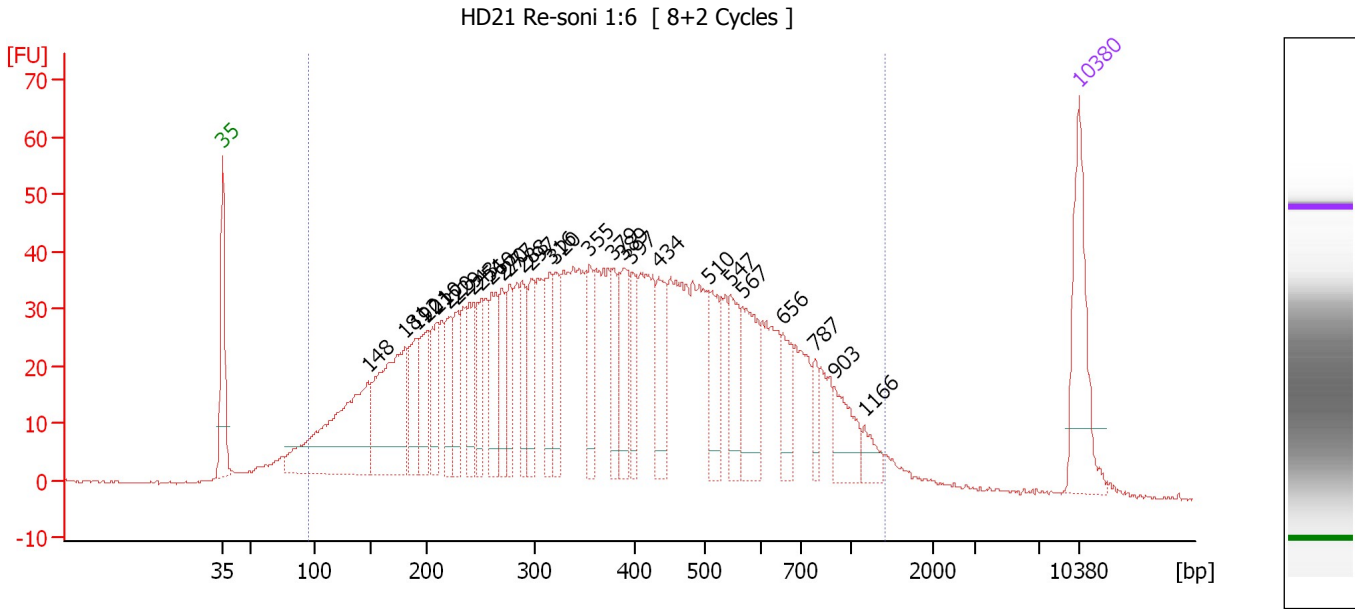
Region table for sample 2 : HD20 Re-soni 1:6

From [bp]	To [bp]	Average Size [bp]	Molarity [pmol/l]	Conc. [pg/μl]	Corr. Area	% of Total	Size distribution in CV [%]	Color
99	1,261	404	13,072.1	2,375.32	1,746.5	94	49.5	Blue

Assay Class: High Sensitivity DNA Assay
 Data Path: C:\...ents and Settings\Bioanalyzer\2013-12-13\2013-12-13_004.xad

Created: 12/13/2013 2:18:15 PM
 Modified: 12/13/2013 3:05:47 PM

Electropherogram Summary Continued ...



Overall Results for sample 3 : HD21 Re-soni 1:6

Number of peaks found: 28 Corr. Area 1: 1,894.9
 Noise: 0.2

Peak table for sample 3 : HD21 Re-soni 1:6

Peak	Aligned Migration Time [s]	Size [bp]	Conc. [pg/μl]	Molarity [pmol/l]	Observations
1	43.00	35	125.00	5,411.3	Lower Marker
2	54.90	148	235.84	2,415.7	
3	57.91	181	183.17	1,533.2	
4	58.87	192	57.60	455.5	
5	59.74	201	58.79	442.7	
6	60.52	210	57.12	412.1	
7	61.44	220	51.79	356.1	
8	62.18	229	45.37	300.6	
9	63.49	243	53.05	330.2	
10	64.14	251	46.32	279.8	
11	64.97	260	68.10	396.7	
12	65.84	270	46.56	261.3	
13	66.45	277	46.67	255.4	
14	67.45	288	46.36	243.8	
15	68.24	297	49.50	252.5	
16	69.81	316	55.78	267.5	
17	70.11	320	45.48	215.5	
18	72.99	355	42.76	182.5	
19	74.95	379	40.23	160.8	
20	75.73	389	66.45	259.0	
21	76.43	397	38.02	145.0	
22	78.61	434	60.20	210.0	
23	82.79	510	50.23	149.4	
24	84.54	547	50.17	138.9	
25	85.45	567	71.11	190.0	

Assay Class: High Sensitivity DNA Assay
 Data Path: C:\...ents and Settings\Bioanalyzer\2013-12-13\2013-12-13_004.xad


Created: 12/13/2013 2:18:15 PM
 Modified: 12/13/2013 3:05:47 PM

Electropherogram Summary Continued ...

... Peak table for sample 3 : HD21 Re-soni 1:6

Peak	Aligned Migration Time [s]	Size [bp]	Conc. [pg/ μ l]	Molarity [pmol/l]	Observations
26	88.81	656	35.32	81.5	
27	91.42	787	16.63	32.0	
28	92.99	903	40.06	67.2	
29	95.43	1,166	16.03	20.8	
30	113.00	10,380	75.00	10.9	Upper Marker

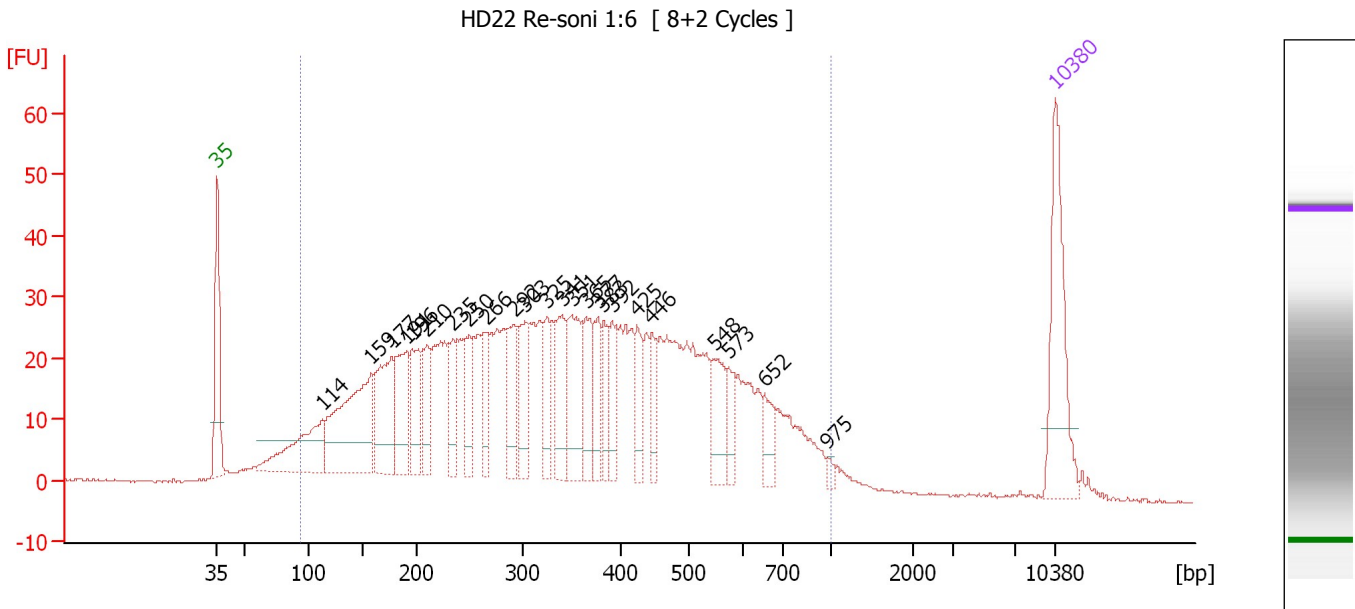
Region table for sample 3 : HD21 Re-soni 1:6

From [bp]	To [bp]	Average Size [bp]	Molarity [pmol/l]	Conc. [pg/ μ l]	Corr. Area	% of Total	Size distribution in CV [%]	Color
95	1,407	411	15,887.0	2,903.29	1,894.9	95	52.3	

Assay Class: High Sensitivity DNA Assay
 Data Path: C:\...ents and Settings\Bioanalyzer\2013-12-13\2013-12-13_004.xad

Created: 12/13/2013 2:18:15 PM
 Modified: 12/13/2013 3:05:47 PM

Electropherogram Summary Continued ...



Overall Results for sample 4 : HD22 Re-soni 1:6

Number of peaks found: 24 Corr. Area 1: 1,354.7
 Noise: 0.1

Peak table for sample 4 : HD22 Re-soni 1:6

Peak	Aligned Migration Time [s]	Size [bp]	Conc. [pg/μl]	Molarity [pmol/l]	Observations
1	43.00	35	125.00	5,411.3	Lower Marker
2	51.78	114	102.15	1,362.7	
3	55.88	159	176.35	1,683.8	
4	57.57	177	99.40	849.3	
5	58.77	191	79.24	630.0	
6	59.26	196	54.85	424.1	
7	60.51	210	51.18	369.4	
8	62.69	235	45.09	291.3	
9	64.08	250	41.97	254.3	
10	65.50	266	36.21	206.2	
11	67.77	292	52.23	271.2	
12	68.71	303	49.15	246.2	
13	70.54	325	34.72	161.9	
14	71.83	341	54.54	242.5	
15	72.63	351	76.17	329.1	
16	73.83	365	43.80	181.6	
17	74.81	377	35.42	142.2	
18	75.26	383	32.06	126.9	
19	76.02	392	31.34	121.1	
20	78.07	425	32.81	117.0	
21	79.27	446	25.72	87.4	
22	84.57	548	44.43	122.9	
23	85.73	573	22.54	59.6	
24	88.67	652	21.03	48.9	
25	93.97	975	3.70	5.7	

Assay Class: High Sensitivity DNA Assay
 Data Path: C:\...ents and Settings\Bioanalyzer\2013-12-13\2013-12-13_004.xad


Created: 12/13/2013 2:18:15 PM
 Modified: 12/13/2013 3:05:47 PM

Electropherogram Summary Continued ...

... Peak table for sample 4 : HD22 Re-soni 1:6

Peak	Aligned Migration Time [s]	Size [bp]	Conc. [pg/μl]	Molarity [pmol/l]	Observations
26	113.00	10,380	75.00	10.9	Upper Marker

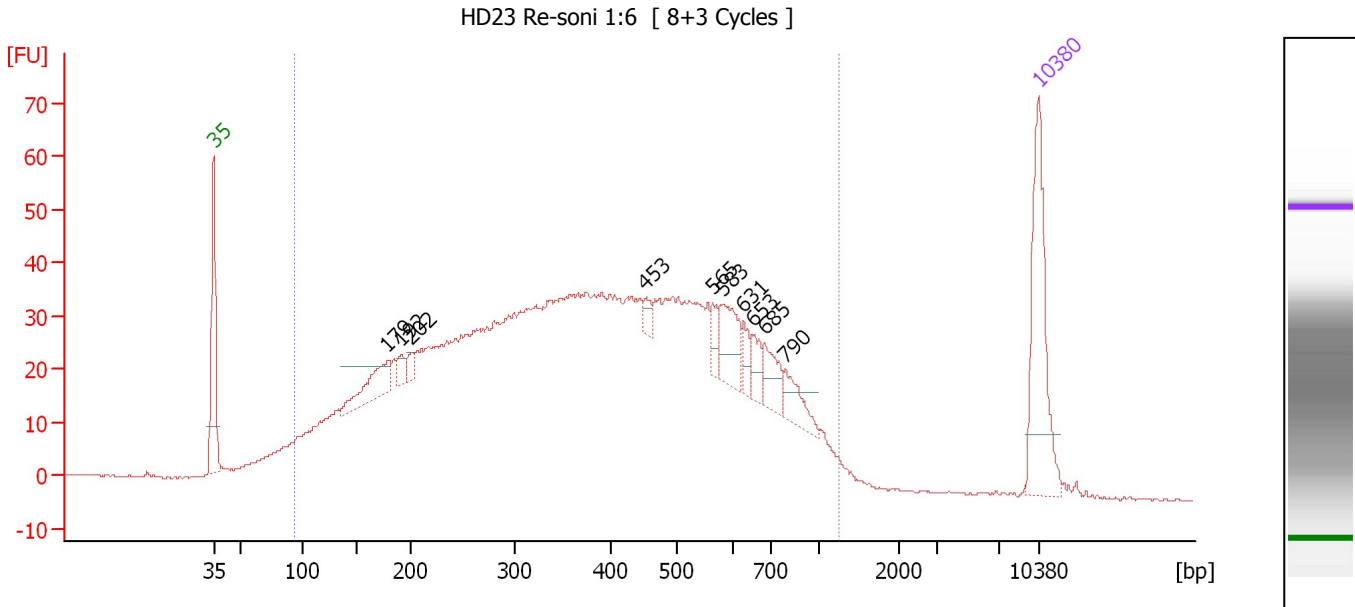
Region table for sample 4 : HD22 Re-soni 1:6

From [bp]	To [bp]	Average Size [bp]	Molarity [pmol/l]	Conc. [pg/μl]	Corr. Area	% of Total	Size distribution in CV [%]	Color
94	1,000	368	12,989.8	2,206.14	1,354.7	94	46.5	

Assay Class: High Sensitivity DNA Assay
 Data Path: C:\...ents and Settings\Bioanalyzer\2013-12-13\2013-12-13_004.xad

Created: 12/13/2013 2:18:15 PM
 Modified: 12/13/2013 3:05:47 PM

Electropherogram Summary Continued ...



Overall Results for sample 5 : HD23 Re-soni 1:6

Number of peaks found: 10 Corr. Area 1: 1,748.2
 Noise: 0.2

Peak table for sample 5 : HD23 Re-soni 1:6

Peak	Aligned Migration Time [s]	Size [bp]	Conc. [pg/μl]	Molarity [pmol/l]	Observations
1	43.00	35	125.00	5,411.3	Lower Marker
2	57.75	179	45.53	384.7	
3	58.88	192	11.11	87.7	
4	59.79	202	8.14	61.1	
5	79.65	453	7.46	25.0	
6	85.35	565	12.94	34.7	
7	86.21	583	35.27	91.6	
8	87.98	631	11.54	27.7	
9	88.70	653	13.59	31.6	
10	89.74	685	23.03	51.0	
11	91.46	790	21.38	41.0	
12	113.00	10,380	75.00	10.9	Upper Marker

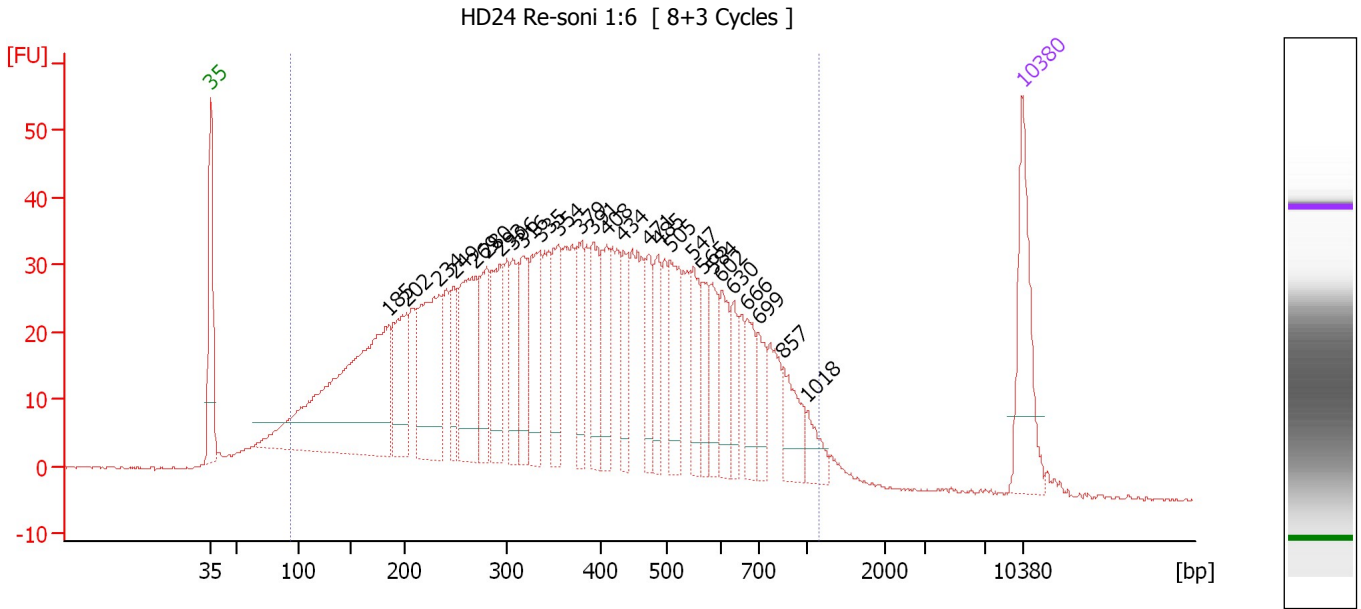
Region table for sample 5 : HD23 Re-soni 1:6

From [bp]	To [bp]	Average Size [bp]	Molarity [pmol/l]	Conc. [pg/μl]	Corr. Area	% of Total	Size distribution in CV [%]	Color
93	1,266	413	12,719.6	2,346.43	1,748.2	96	48.7	Blue

Assay Class: High Sensitivity DNA Assay
 Data Path: C:\...ents and Settings\Bioanalyzer\2013-12-13\2013-12-13_004.xad

Created: 12/13/2013 2:18:15 PM
 Modified: 12/13/2013 3:05:47 PM

Electropherogram Summary Continued ...



Overall Results for sample 6 : HD24 Re-soni 1:6

Number of peaks found: 27 Corr. Area 1: 1,673.8
 Noise: 0.1

Peak table for sample 6 : HD24 Re-soni 1:6

Peak	Aligned Migration Time [s]	Size [bp]	Conc. [pg/μl]	Molarity [pmol/l]	Observations
1	43.00	35	125.00	5,411.3	Lower Marker
2	58.31	185	409.30	3,344.9	
3	59.78	202	103.73	779.5	
4	62.63	234	168.30	1,090.9	
5	63.96	249	47.79	291.1	
6	65.80	269	139.45	784.1	
7	66.76	280	75.17	406.2	
8	67.91	293	85.74	442.9	
9	68.97	306	63.98	317.1	
10	69.80	316	67.46	323.6	
11	71.36	335	84.29	381.2	
12	72.92	354	68.82	294.4	
13	74.94	379	59.57	238.1	
14	75.95	391	64.04	247.9	
15	77.10	408	55.92	207.7	
16	78.57	434	44.36	154.9	
17	80.69	471	45.44	146.2	
18	81.52	485	44.73	139.6	
19	82.57	505	71.78	215.5	
20	84.55	547	51.66	143.0	
21	85.38	565	36.40	97.5	
22	86.25	584	41.45	107.5	
23	87.03	602	42.54	107.1	
24	87.95	630	28.53	68.6	
25	89.15	666	37.08	84.3	

Assay Class: High Sensitivity DNA Assay
 Data Path: C:\...ents and Settings\Bioanalyzer\2013-12-13\2013-12-13_004.xad


Created: 12/13/2013 2:18:15 PM
 Modified: 12/13/2013 3:05:47 PM

Electropherogram Summary Continued ...

... Peak table for sample 6 : HD24 Re-soni 1:6

Peak	Aligned Migration Time [s]	Size [bp]	Conc. [pg/ μ l]	Molarity [pmol/l]	Observations
26	90.20	699	33.84	73.4	
27	92.36	857	44.66	79.0	
28	94.43	1,018	22.13	32.9	
29	113.00	10,380	75.00	10.9	Upper Marker

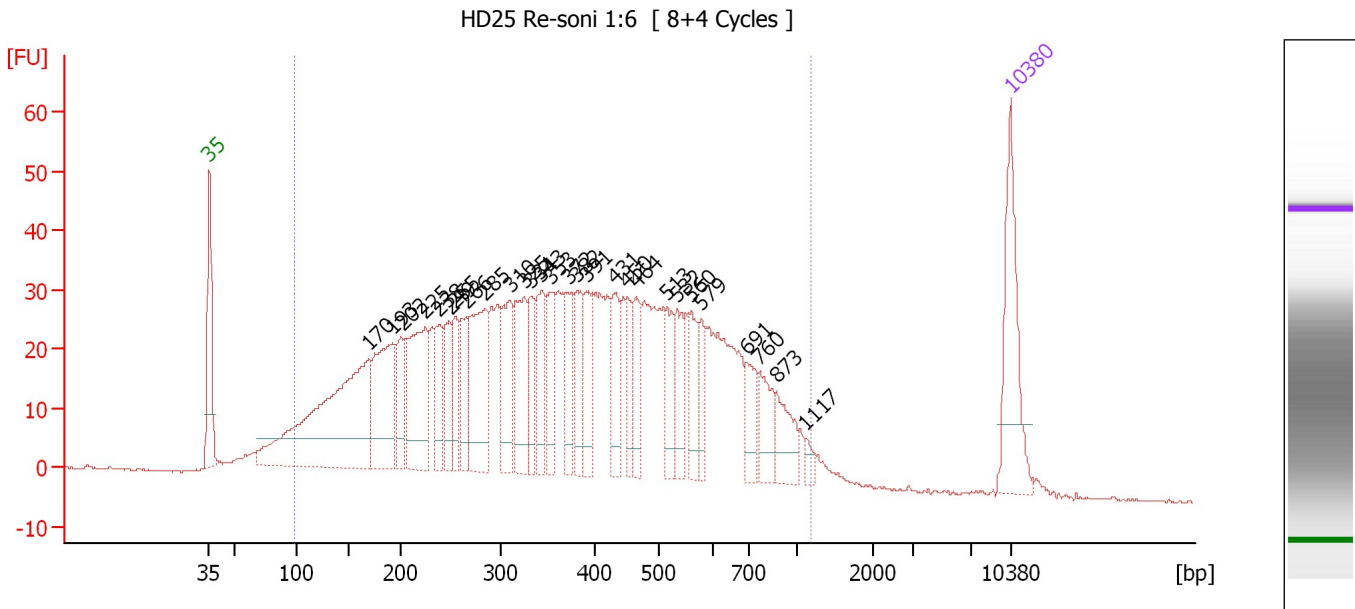
Region table for sample 6 : HD24 Re-soni 1:6

From [bp]	To [bp]	Average Size [bp]	Molarity [pmol/l]	Conc. [pg/ μ l]	Corr. Area	% of Total	Size distribution in CV [%]	Color
93	1,166	400	17,037.4	3,067.99	1,673.8	95	48.1	

Assay Class: High Sensitivity DNA Assay
 Data Path: C:\...ents and Settings\Bioanalyzer\2013-12-13\2013-12-13_004.xad

Created: 12/13/2013 2:18:15 PM
 Modified: 12/13/2013 3:05:47 PM

Electropherogram Summary Continued ...



Overall Results for sample 7 : HD25 Re-soni 1:6

Number of peaks found: 28 Corr. Area 1: 1,546.0
 Noise: 0.1

Peak table for sample 7 : HD25 Re-soni 1:6

Peak	Aligned Migration Time [s]	Size [bp]	Conc. [pg/μl]	Molarity [pmol/l]	Observations
1	43.00	35	125.00	5,411.3	Lower Marker
2	56.93	170	343.09	3,052.1	
3	59.03	193	134.96	1,057.3	
4	59.82	202	45.57	341.5	
5	61.87	225	138.70	932.9	
6	63.04	238	49.72	316.0	
7	64.02	249	49.20	298.9	
8	64.48	255	43.40	258.2	
9	65.46	266	55.77	318.0	
10	67.14	285	113.71	605.3	
11	69.28	310	71.40	349.5	
12	70.54	325	83.34	388.5	
13	71.06	331	45.12	206.3	
14	72.03	343	57.60	254.2	
15	72.83	353	53.62	230.1	
16	74.36	372	42.46	173.0	
17	75.16	382	50.70	201.3	
18	75.95	391	46.60	180.4	
19	78.42	431	46.71	164.2	
20	79.49	450	34.73	117.0	
21	80.28	464	36.87	120.5	
22	82.94	513	40.38	119.3	
23	83.83	532	40.91	116.5	
24	85.13	560	40.86	110.5	
25	86.02	579	28.27	74.0	

Assay Class: High Sensitivity DNA Assay
 Data Path: C:\...ents and Settings\Bioanalyzer\2013-12-13\2013-12-13_004.xad

Created: 12/13/2013 2:18:15 PM
 Modified: 12/13/2013 3:05:47 PM

Electropherogram Summary Continued ...

... Peak table for sample 7 : HD25 Re-soni 1:6

Peak	Aligned Migration Time [s]	Size [bp]	Conc. [pg/ μ l]	Molarity [pmol/l]	Observations
26	89.93	691	31.83	69.8	
27	91.05	760	37.67	75.1	
28	92.59	873	36.29	63.0	
29	95.10	1,117	7.15	9.7	
30	113.00	10,380	75.00	10.9	Upper Marker

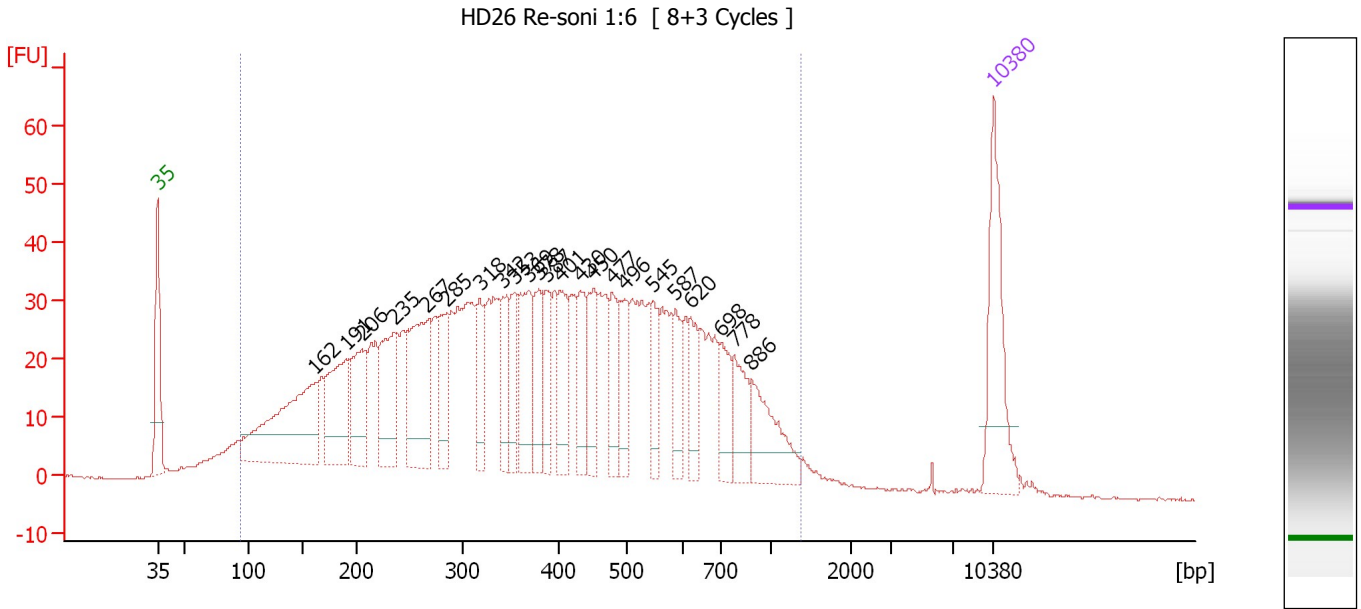
Region table for sample 7 : HD25 Re-soni 1:6

From [bp]	To [bp]	Average Size [bp]	Molarity [pmol/l]	Conc. [pg/ μ l]	Corr. Area	% of Total	Size distribution in CV [%]	Color
99	1,190	401	14,191.5	2,584.24	1,546.0	95	48.6	

Assay Class: High Sensitivity DNA Assay
 Data Path: C:\...ents and Settings\Bioanalyzer\2013-12-13\2013-12-13_004.xad

Created: 12/13/2013 2:18:15 PM
 Modified: 12/13/2013 3:05:47 PM

Electropherogram Summary Continued ...



Overall Results for sample 8 : HD26 Re-soni 1:6

Number of peaks found: 23 Corr. Area 1: 1,600.3
 Noise: 0.1

Peak table for sample 8 : HD26 Re-soni 1:6

Peak	Aligned Migration Time [s]	Size [bp]	Conc. [pg/μl]	Molarity [pmol/l]	Observations
1	43.00	35	125.00	5,411.3	Lower Marker
2	56.21	162	190.71	1,780.2	
3	58.80	191	99.41	789.2	
4	60.12	206	82.63	609.2	
5	62.76	235	93.85	604.3	
6	65.55	267	126.17	716.9	
7	67.20	285	51.27	272.3	
8	69.98	318	39.30	187.2	
9	71.92	342	47.50	210.5	
10	72.86	353	41.30	177.1	
11	74.08	369	77.63	319.2	
12	74.89	378	48.25	193.2	
13	75.59	387	39.12	153.2	
14	76.68	401	51.42	194.5	
15	78.38	430	45.09	158.8	
16	79.51	450	50.03	168.4	
17	81.07	477	38.01	120.6	
18	82.10	496	41.73	127.6	
19	84.42	545	37.88	105.4	
20	86.40	587	33.84	87.3	
21	87.62	620	31.80	77.7	
22	90.17	698	34.72	75.4	
23	91.30	778	41.45	80.7	
24	92.76	886	60.74	103.9	
25	113.00	10,380	75.00	10.9	Upper Marker

Assay Class: High Sensitivity DNA Assay
Data Path: C:\...ents and Settings\Bioanalyzer\2013-12-13\2013-12-13_004.xad

Created: 12/13/2013 2:18:15 PM
Modified: 12/13/2013 3:05:47 PM

Electropherogram Summary Continued ...

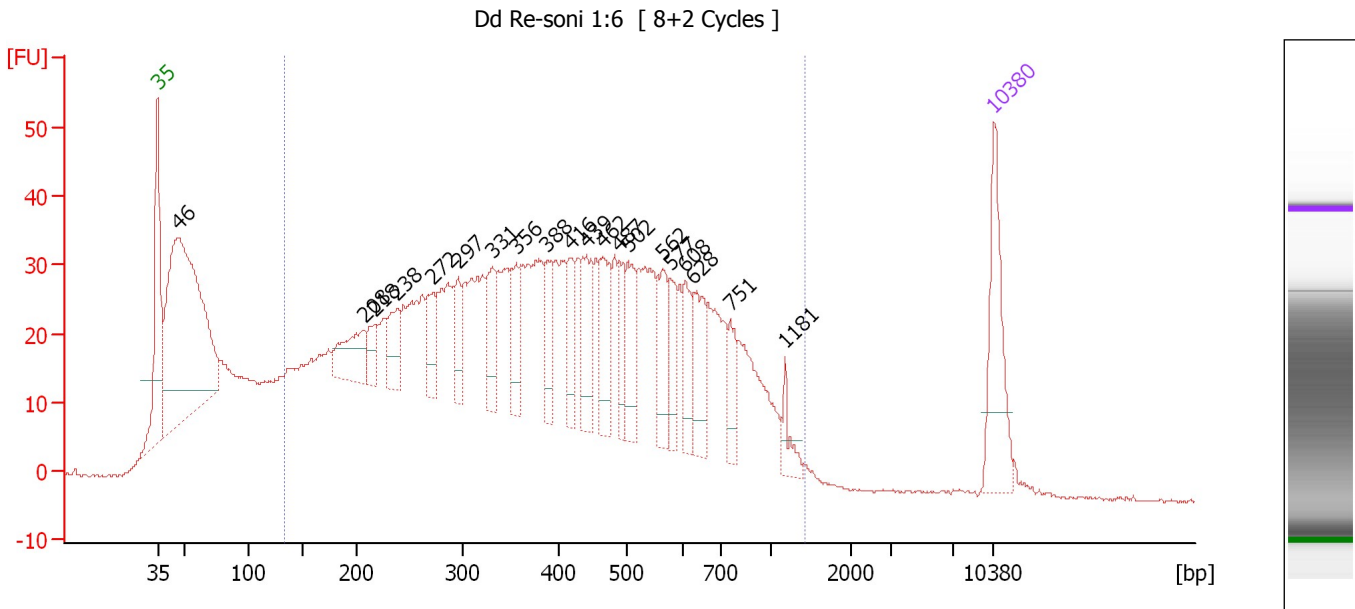
... Region table for sample 8 : HD26 Re-soni 1:6

From [bp]	To [bp]	Average Size [bp]	Molarity [pmol/l]	Conc. [pg/μl]	Corr. Area	% of Total	Size distribution in CV [%]	Color
95	1,390	421	13,230.8	2,471.60	1,600.3	96	51.1	■

Assay Class: High Sensitivity DNA Assay
 Data Path: C:\...ents and Settings\Bioanalyzer\2013-12-13\2013-12-13_004.xad

Created: 12/13/2013 2:18:15 PM
 Modified: 12/13/2013 3:05:47 PM

Electropherogram Summary Continued ...



Overall Results for sample 9 : Dd Re-soni 1:6

Number of peaks found: 20 Corr. Area 1: 1,502.6
 Noise: 0.2

Peak table for sample 9 : Dd Re-soni 1:6

Peak	Aligned Migration Time [s]	Size [bp]	Conc. [pg/μl]	Molarity [pmol/l]	Observations
1	43.00	35	125.00	5,411.3	Lower Marker
2	44.71	46	538.04	17,532.7	
3	60.32	208	64.17	468.0	
4	61.22	218	27.32	189.9	
5	63.03	238	45.63	290.1	
6	66.06	272	41.77	232.3	
7	68.20	297	33.57	171.5	
8	71.05	331	51.59	236.0	
9	73.04	356	44.10	187.9	
10	75.65	388	36.14	141.2	
11	77.55	416	41.82	152.4	
12	78.88	439	61.58	212.5	
13	80.21	462	55.67	182.4	
14	81.63	487	35.64	110.8	
15	82.44	502	48.80	147.3	
16	85.24	562	46.59	125.5	
17	85.90	577	30.35	79.7	
18	87.23	608	41.98	104.7	
19	87.89	628	49.15	118.6	
20	90.93	751	29.71	59.9	
21	95.54	1,181	16.45	21.1	
22	113.00	10,380	75.00	10.9	Upper Marker

Assay Class: High Sensitivity DNA Assay
Data Path: C:\...ents and Settings\Bioanalyzer\2013-12-13\2013-12-13_004.xad

Created: 12/13/2013 2:18:15 PM
Modified: 12/13/2013 3:05:47 PM

Electropherogram Summary Continued ...

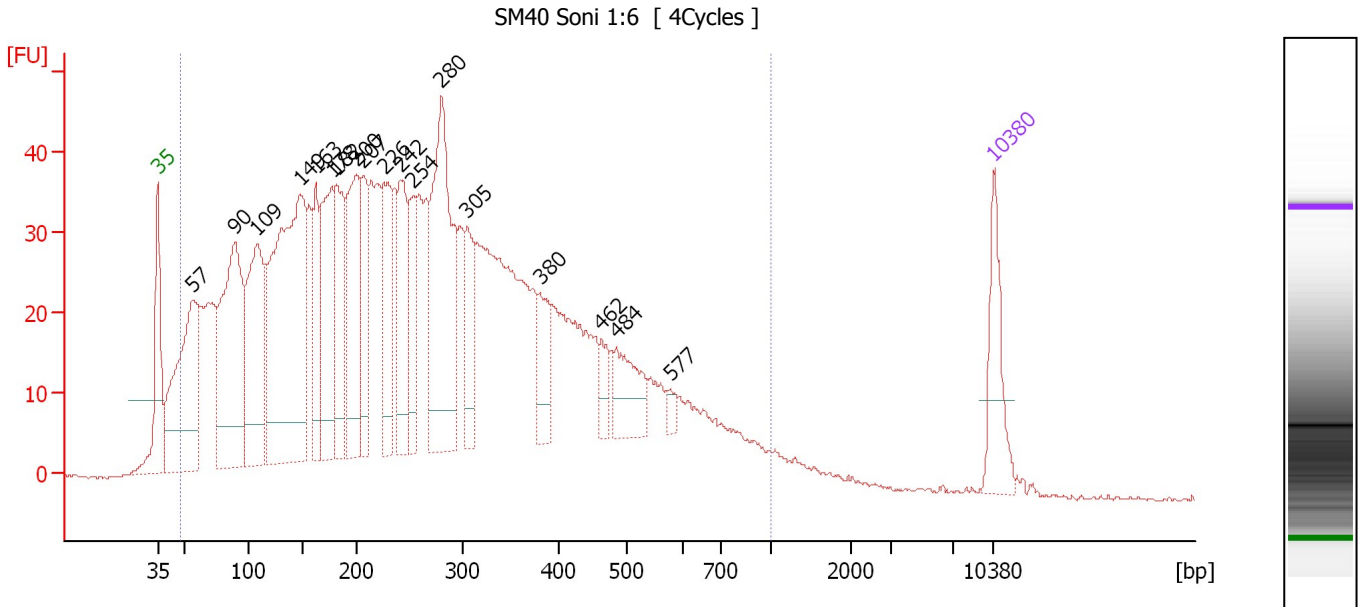
... Region table for sample 9 : Dd Re-soni 1:6

From [bp]	To [bp]	Average Size [bp]	Molarity [pmol/l]	Conc. [pg/μl]	Corr. Area	% of Total	Size distribution in CV [%]	Color
135	1,423	434	14,911.5	3,034.79	1,502.6	76	49.6	■

Assay Class: High Sensitivity DNA Assay
 Data Path: C:\...ents and Settings\Bioanalyzer\2013-12-13\2013-12-13_004.xad

Created: 12/13/2013 2:18:15 PM
 Modified: 12/13/2013 3:05:47 PM

Electropherogram Summary Continued ...



Overall Results for sample 10 : SM40 Soni 1:6

Number of peaks found: 18 Corr. Area 1: 1,852.9
 Noise: 0.2

Peak table for sample 10 : SM40 Soni 1:6

Peak	Aligned Migration Time [s]	Size [bp]	Conc. [pg/μl]	Molarity [pmol/l]	Observations
1	43.00	35	125.00	5,411.3	Lower Marker
2	45.95	57	357.77	9,543.0	
3	49.48	90	415.11	6,992.1	
4	51.33	109	298.24	4,157.8	
5	55.00	149	621.86	6,322.3	
6	56.24	163	123.34	1,149.0	
7	57.62	178	219.45	1,869.6	
8	58.00	182	174.01	1,448.3	
9	59.67	200	220.65	1,668.4	
10	60.24	207	123.07	901.5	
11	61.95	226	122.20	818.7	
12	63.33	242	154.21	966.6	
13	64.43	254	93.39	556.9	
14	66.76	280	364.57	1,970.3	
15	68.90	305	91.14	452.9	
16	75.00	380	69.78	278.4	
17	80.19	462	30.42	99.7	
18	81.43	484	81.63	255.6	
19	85.90	577	13.11	34.4	
20	113.00	10,380	75.00	10.9	Upper Marker

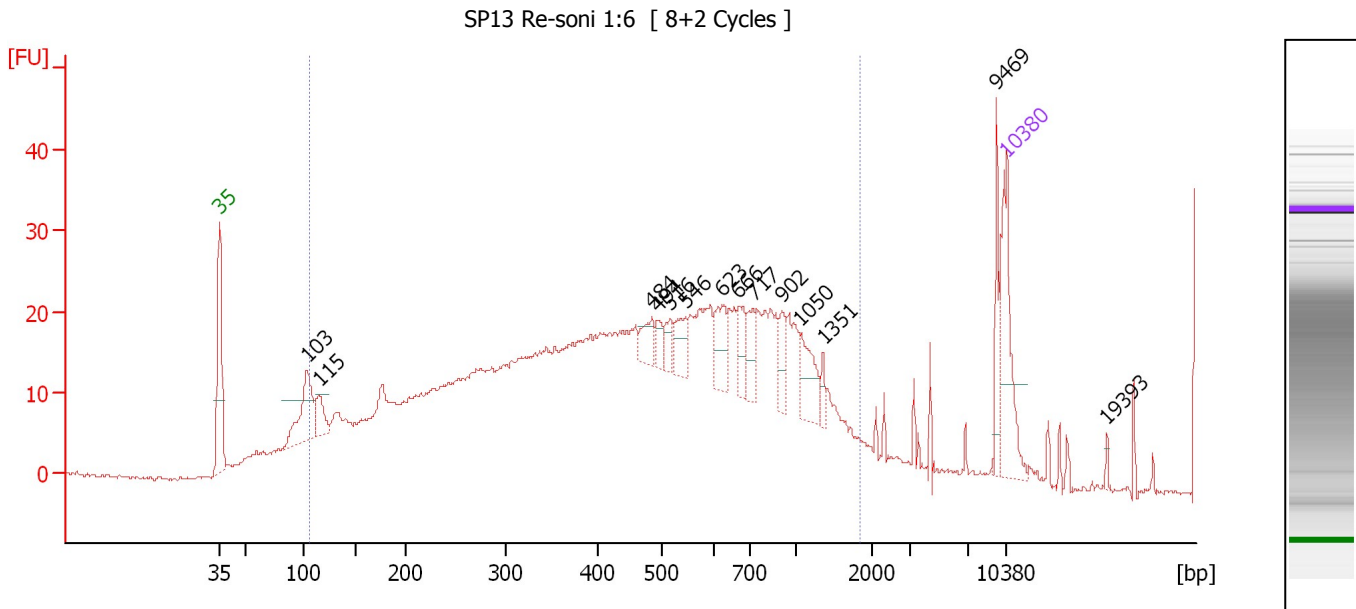
Region table for sample 10 : SM40 Soni 1:6

From [bp]	To [bp]	Average Size [bp]	Molarity [pmol/l]	Conc. [pg/μl]	Corr. Area	% of Total	Size distribution in CV [%]	Color
48	1,000	281	54,366.7	5,922.51	1,852.9	96	58.5	Blue

Assay Class: High Sensitivity DNA Assay
 Data Path: C:\...ents and Settings\Bioanalyzer\2013-12-13\2013-12-13_004.xad

Created: 12/13/2013 2:18:15 PM
 Modified: 12/13/2013 3:05:47 PM

Electropherogram Summary Continued ...



Overall Results for sample 11 : SP13 Re-soni 1:6

Number of peaks found: 14 Corr. Area 1: 965.9
 Noise: 0.2

Peak table for sample 11 : SP13 Re-soni 1:6

Peak	Aligned Migration Time [s]	Size [bp]	Conc. [pg/μl]	Molarity [pmol/l]	Observations
1	43.00	35	125.00	5,411.3	Lower Marker
2	50.78	103	99.32	1,467.2	
3	51.87	115	35.22	465.7	
4	81.46	484	26.14	81.8	
5	81.98	494	15.35	47.1	
6	83.07	516	18.19	53.4	
7	84.50	546	28.03	77.7	
8	87.72	623	37.49	91.2	
9	89.14	666	29.13	66.2	
10	90.47	717	27.50	58.1	
11	92.99	902	25.03	42.0	
12	94.65	1,050	40.94	59.1	
13	96.69	1,351	10.45	11.7	
14	112.10	9,469	31.75	5.1	
15	113.00	10,380	75.00	10.9	Upper Marker
16	121.92	19,393	0.00	0.0	

Region table for sample 11 : SP13 Re-soni 1:6

From [bp]	To [bp]	Average Size [bp]	Molarity [pmol/l]	Conc. [pg/μl]	Corr. Area	% of Total	Size distribution in CV [%]	Color
105	1,842	533	15,884.3	3,239.16	965.9	88	62.4	Blue

Assay Class: High Sensitivity DNA Assay
Data Path: C:\...ents and Settings\Bioanalyzer\2013-12-13\2013-12-13_004.xad

Created: 12/13/2013 2:18:15 PM
Modified: 12/13/2013 3:05:47 PM

Gel Image

