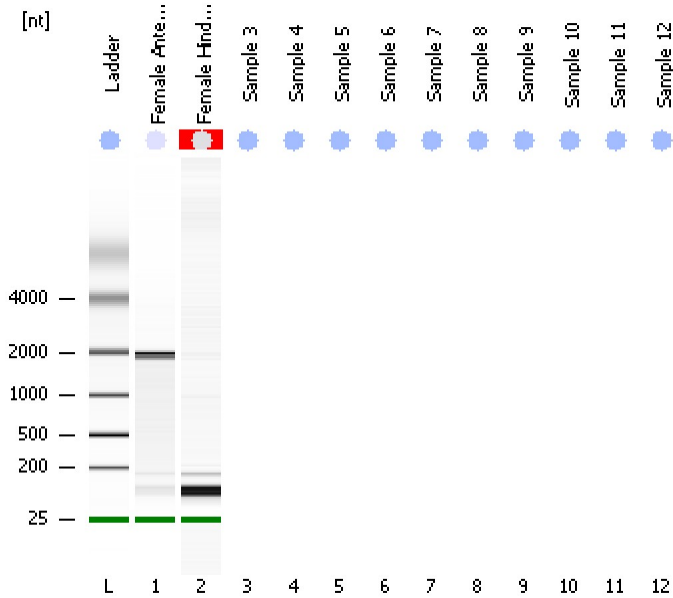


Assay Class: Eukaryote Total RNA Nano
Data Path: C:\...ents and Settings\Bioanalyzer\2013-12-13\2013-12-13_005.xad

Created: 12/13/2013 4:29:49 PM
Modified: 12/13/2013 4:42:37 PM

Electrophoresis File Run Summary



Instrument Information:

Instrument Name: DE13701086 Firmware: C.01.069
Serial#: DE13701086 Type: G2938B

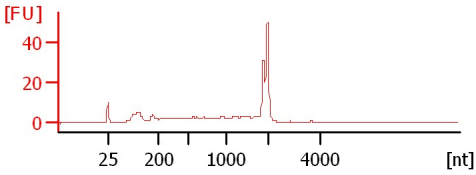
Assay Information:

Assay Origin Path: C:\Program Files\Agilent\2100 bioanalyzer\2100 expert\assays\RNA\Eukaryote Total RNA Nano Series II.xsy
Assay Class: Eukaryote Total RNA Nano
Version: 2.6
Assay Comments: Total RNA Analysis ng sensitivity (Eukaryote)
© Copyright 2003 - 2009 Agilent Technologies, Inc.

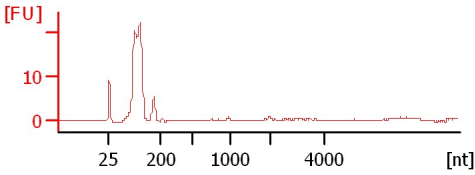
Chip Information:

Chip Lot #:
Reagent Kit Lot #:
Chip Comments:

Female Antennae Total RNA
RIN: 5.10



Female Hindlegs Total RNA
RIN N/A



Assay Class: Eukaryote Total RNA Nano
Data Path: C:\...ents and Settings\Bioanalyzer\2013-12-13\2013-12-13_005.xad

Created: 12/13/2013 4:29:49 PM
Modified: 12/13/2013 4:42:37 PM

Electrophoresis File Run Summary (Chip Summary)

Sample Name	Sample Comment	Status	Result Label	Result Color
Female Antennae Total RNA		✓	RIN: 5.10	
Female Hindlegs Total RNA		✓	RIN N/A	
Sample 3				
Sample 4				
Sample 5				
Sample 6				
Sample 7				
Sample 8				
Sample 9				
Sample 10				
Sample 11				
Sample 12				
Ladder		✓	All Other Samples	

Chip Lot #

Reagent Kit Lot #

Chip Comments :

Assay Class: Eukaryote Total RNA Nano
Data Path: C:\...ents and Settings\Bioanalyzer\2013-12-13\2013-12-13_005.xad

Created: 12/13/2013 4:29:49 PM
Modified: 12/13/2013 4:42:37 PM

Electrophoresis Assay Details

General Analysis Settings

Number of Available Sample and Ladder Wells (Max.) : 13
Minimum Visible Range [s] : 17
Maximum Visible Range [s] : 70
Start Analysis Time Range [s] : 19
End Analysis Time Range [s] : 69
Ladder Concentration [ng/μl] : 150
Lower Marker Concentration [ng/μl] : 0
Upper Marker Concentration [ng/μl] : 0
Used Lower Marker for Quantitation
Standard Curve Fit is Logarithmic
Show Data Aligned to Lower Marker

Integrator Settings

Integration Start Time [s] : 19
Integration End Time [s] : 69
Slope Threshold : 0.6
Height Threshold [FU] : 0.5
Area Threshold : 0.2
Width Threshold [s] : 0.5
Baseline Plateau [s] : 6

Filter Settings

Filter Width [s] : 0.5
Polynomial Order : 4

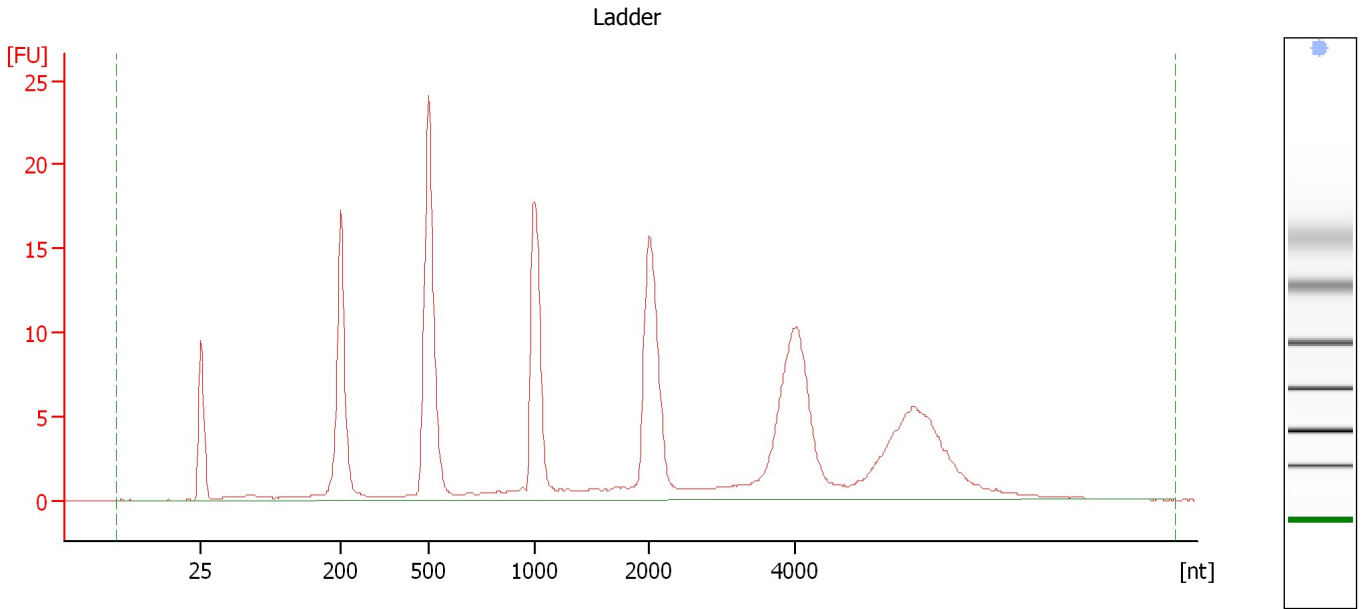
Ladder

Ladder Peak	Size
1	25
2	200
3	500
4	1000
5	2000
6	4000

Assay Class: Eukaryote Total RNA Nano
Data Path: C:\...ents and Settings\Bioanalyzer\2013-12-13\2013-12-13_005.xad

Created: 12/13/2013 4:29:49 PM
Modified: 12/13/2013 4:42:37 PM

Electropherogram Summary



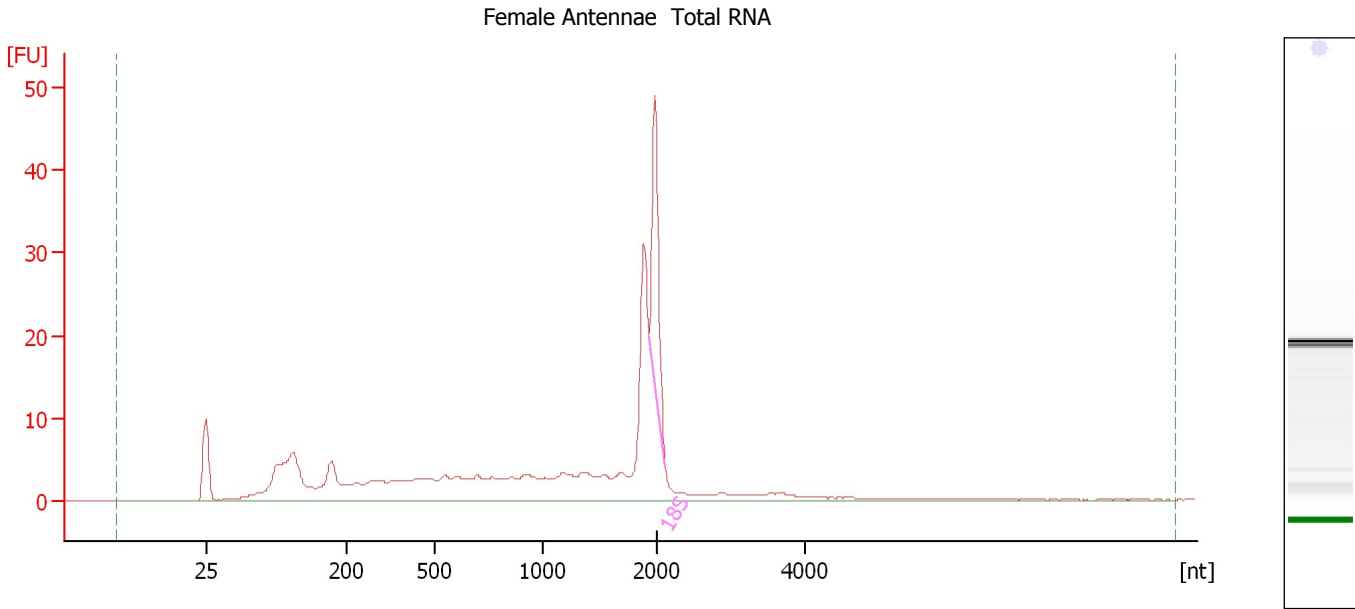
Overall Results for Ladder

RNA Area:	207.1	Result Flagging Color:	
RNA Concentration:	150 ng/ μ l	Result Flagging Label:	All Other Samples

Assay Class: Eukaryote Total RNA Nano
 Data Path: C:\...ents and Settings\Bioanalyzer\2013-12-13\2013-12-13_005.xad

Created: 12/13/2013 4:29:49 PM
 Modified: 12/13/2013 4:42:37 PM

Electropherogram Summary Continued ...



Overall Results for sample 1 : Female Antennae Total RNA

RNA Area:	238.2	RNA Integrity Number (RIN):	5.1 (B.02.08)
RNA Concentration:	172 ng/μl	Result Flagging Color:	
rRNA Ratio [28s / 18s]:	0.0	Result Flagging Label:	RIN: 5.10

Fragment table for sample 1 : Female Antennae Total RNA

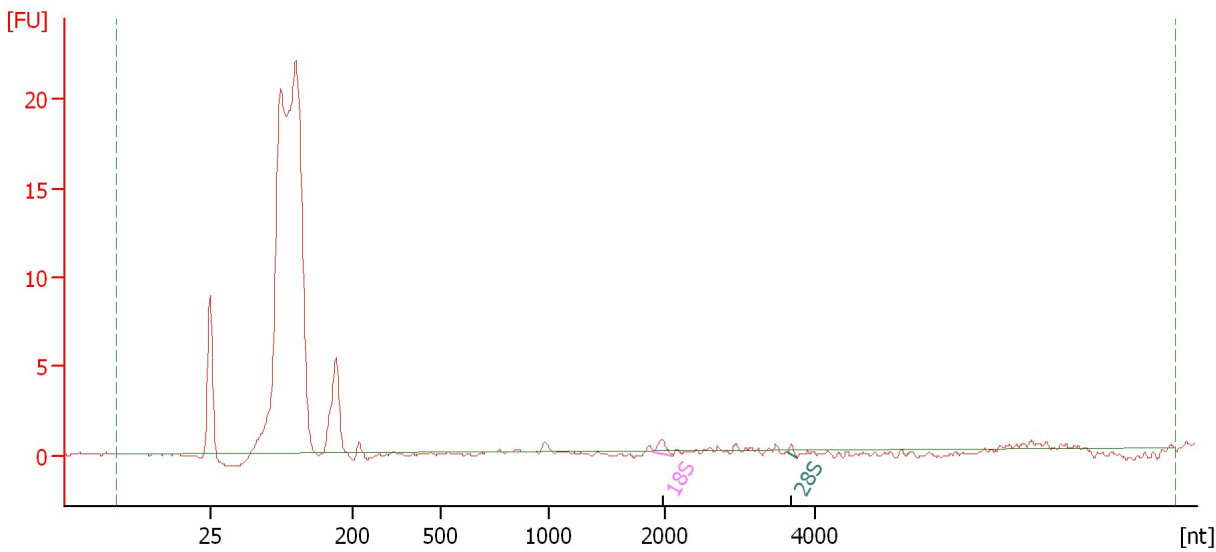
Name	Start Size [nt]	End Size [nt]	Area	% of total Area
18S	1,929	2,107	26.9	11.3

Assay Class: Eukaryote Total RNA Nano
 Data Path: C:\...ents and Settings\Bioanalyzer\2013-12-13\2013-12-13_005.xad

Created: 12/13/2013 4:29:49 PM
 Modified: 12/13/2013 4:42:37 PM

Electropherogram Summary Continued ...

Female Hindlegs Total RNA



Overall Results for sample 2 : Female Hindlegs Total RNA

RNA Area:	114.8	RNA Integrity Number (RIN):	N/A (B.02.08)
RNA Concentration:	83 ng/μl	Result Flagging Color:	
rRNA Ratio [28s / 18s]:	0.3	Result Flagging Label:	RIN N/A

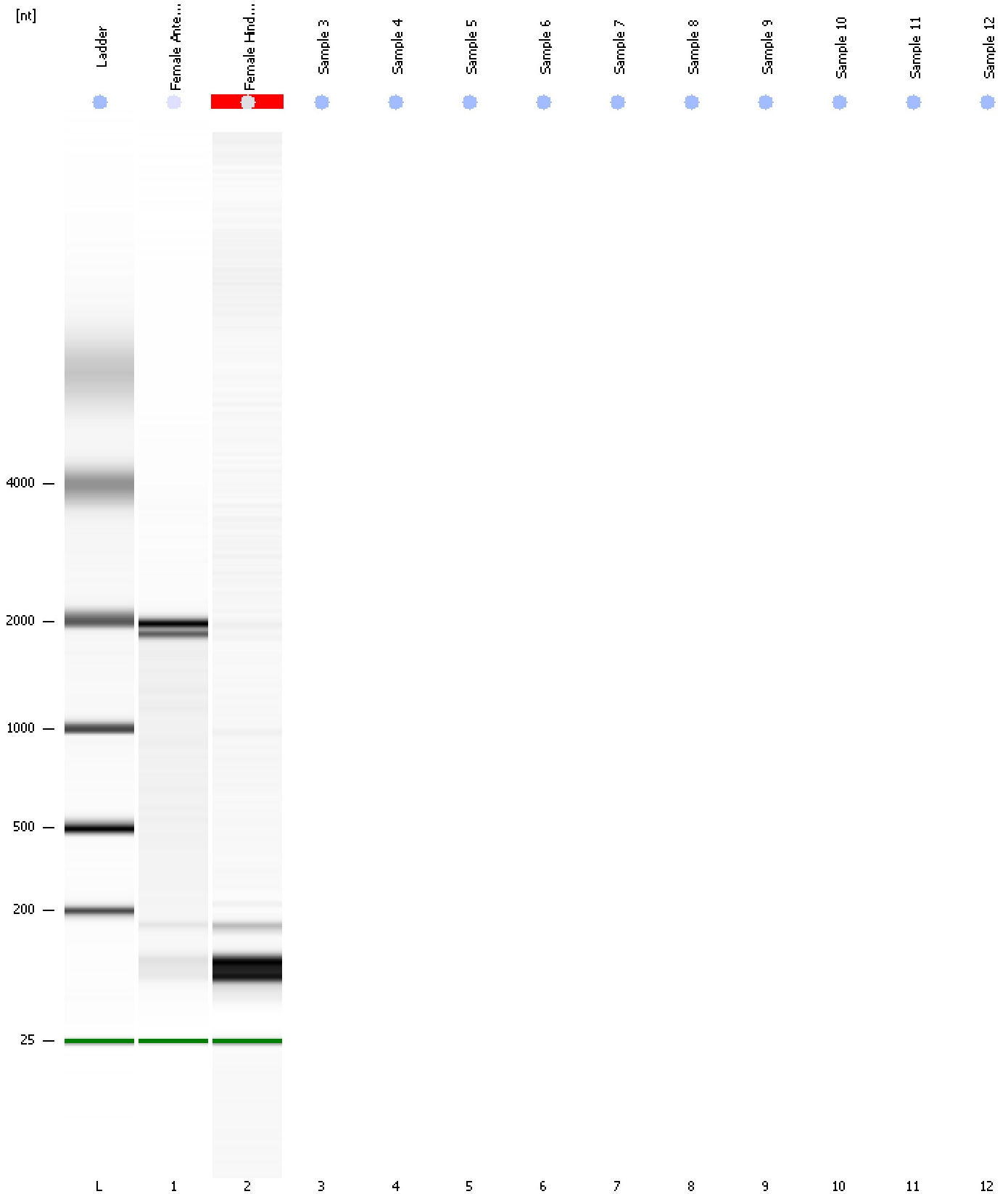
Fragment table for sample 2 : Female Hindlegs Total RNA

Name	Start Size [nt]	End Size [nt]	Area	% of total Area
18S	1,897	2,112	0.7	0.6
28S	3,634	3,777	0.2	0.2

Assay Class: Eukaryote Total RNA Nano
Data Path: C:\...ents and Settings\Bioanalyzer\2013-12-13\2013-12-13_005.xad

Created: 12/13/2013 4:29:49 PM
Modified: 12/13/2013 4:42:37 PM

Gel Image



Assay Class: Eukaryote Total RNA Nano
Data Path: C:\...ents and Settings\Bioanalyzer\2013-12-13\2013-12-13_005.xad

Created: 12/13/2013 4:29:49 PM
Modified: 12/13/2013 4:42:37 PM

Invalid Samples

- Sample 3 has not been run, no results available.
- Sample 4 has not been run, no results available.
- Sample 5 has not been run, no results available.
- Sample 6 has not been run, no results available.
- Sample 7 has not been run, no results available.
- Sample 8 has not been run, no results available.
- Sample 9 has not been run, no results available.
- Sample 10 has not been run, no results available.
- Sample 11 has not been run, no results available.
- Sample 12 has not been run, no results available.