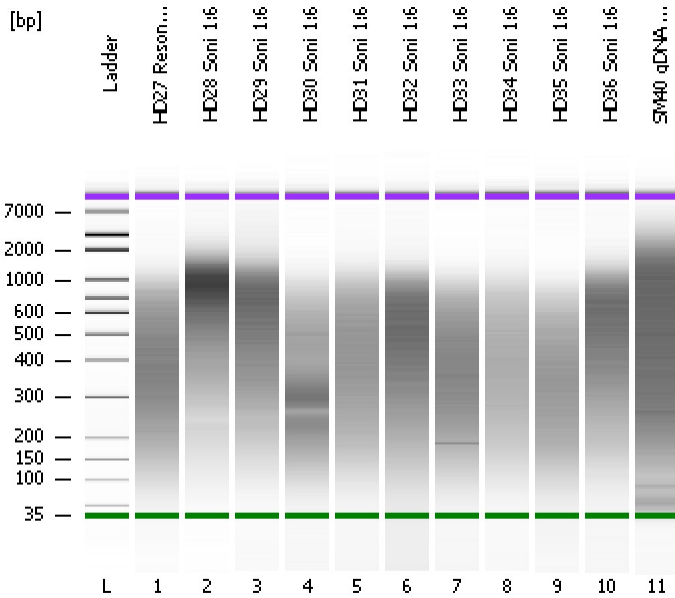


Assay Class: High Sensitivity DNA Assay
Data Path: C:\...ents and Settings\Bioanalyzer\2013-12-16\2013-12-16_001.xad

Created: 12/16/2013 9:45:21 AM
Modified: 12/16/2013 10:28:55 AM

Electrophoresis File Run Summary



Instrument Information:

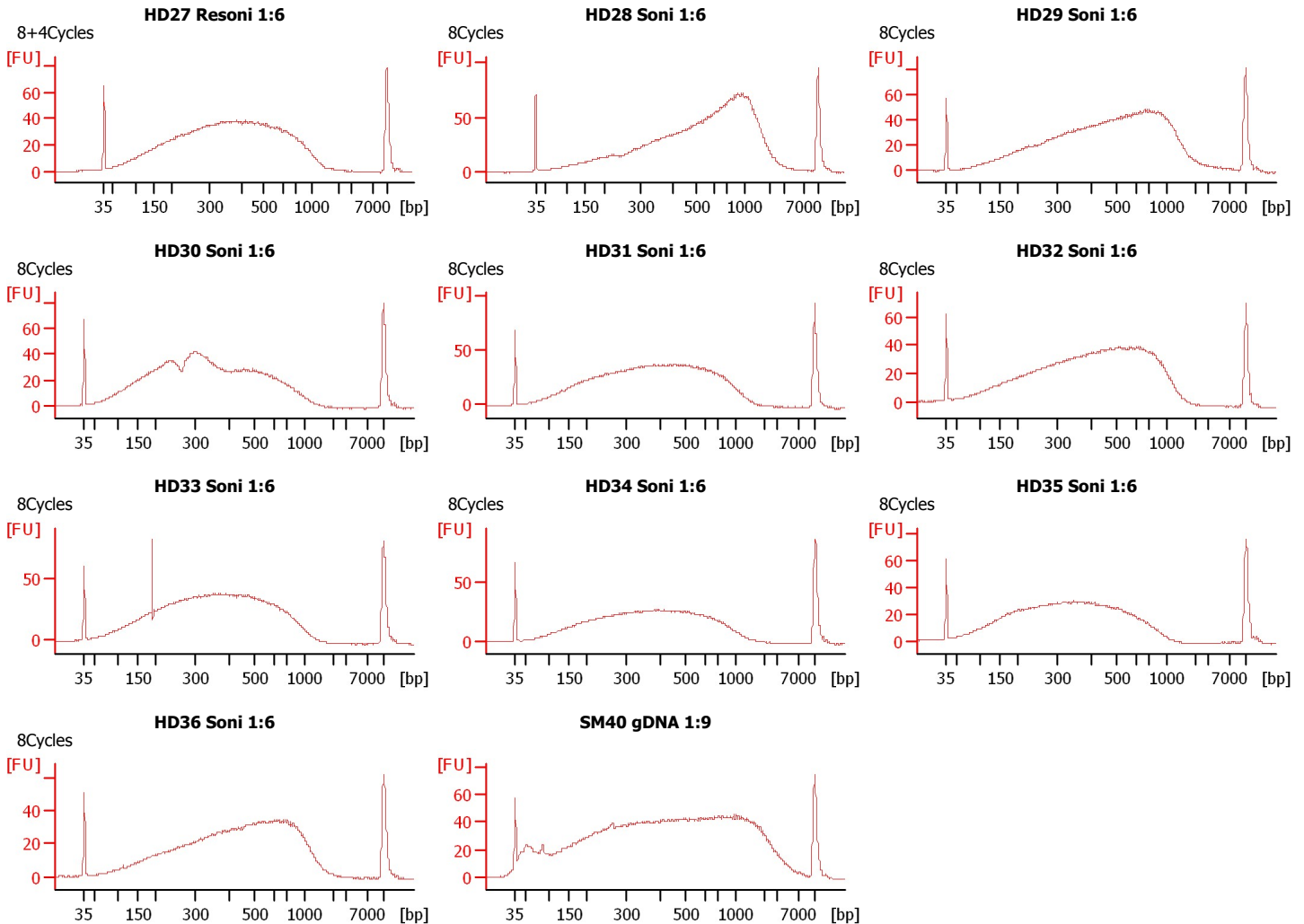
Instrument Name: DE13701086 Firmware: C.01.069
Serial#: DE13701086 Type: G2938B

Assay Information:

Assay Origin Path: C:\Program Files\Agilent\2100 bioanalyzer\2100 expert\assays\dsDNA\High Sensitivity DNA.xsy
Assay Class: High Sensitivity DNA Assay
Version: 1.03
Assay Comments: Copyright © 2003-2010 Agilent Technologies

Chip Information:

Chip Lot #:
Reagent Kit Lot #:
Chip Comments:



Assay Class: High Sensitivity DNA Assay
Data Path: C:\...ents and Settings\Bioanalyzer\2013-12-16\2013-12-16_001.xad

Created: 12/16/2013 9:45:21 AM
Modified: 12/16/2013 10:28:55 AM

Electrophoresis File Run Summary (Chip Summary)

Sample Name	Sample Comment	Rest. Digest	Status	Observation	Result Label	Result Color
HD27 Resoni 1:6	8+4Cycles	<input type="checkbox"/>	✓			
HD28 Soni 1:6	8Cycles	<input type="checkbox"/>	✓			
HD29 Soni 1:6	8Cycles	<input type="checkbox"/>	✓			
HD30 Soni 1:6	8Cycles	<input type="checkbox"/>	✓			
HD31 Soni 1:6	8Cycles	<input type="checkbox"/>	✓			
HD32 Soni 1:6	8Cycles	<input type="checkbox"/>	✓			
HD33 Soni 1:6	8Cycles	<input type="checkbox"/>	✓			
HD34 Soni 1:6	8Cycles	<input type="checkbox"/>	✓			
HD35 Soni 1:6	8Cycles	<input type="checkbox"/>	✓			
HD36 Soni 1:6	8Cycles	<input type="checkbox"/>	✓			
SM40 gDNA 1:9		<input type="checkbox"/>	✓			
Ladder		<input type="checkbox"/>	✓			

Chip Lot #

Reagent Kit Lot #

Chip Comments :

Assay Class: High Sensitivity DNA Assay
 Data Path: C:\...ents and Settings\Bioanalyzer\2013-12-16\2013-12-16_001.xad

Created: 12/16/2013 9:45:21 AM
 Modified: 12/16/2013 10:28:55 AM

Electrophoresis Assay Details

General Analysis Settings

Number of Available Sample and Ladder Wells (Max.) : 12
 Minimum Visible Range [s] : 32
 Maximum Visible Range [s] : 138
 Start Analysis Time Range [s] : 33
 End Analysis Time Range [s] : 137.5
 Ladder Concentration [pg/μl] : 1950
 Uses Standard Area for Ladder Fragments
 Lower Marker Concentration [pg/μl] : 125
 Upper Marker Concentration [pg/μl] : 75
 Used Upper Marker for Quantitation
 Standard Curve Fit is Point to Point
 Show Data Aligned to Lower and Upper Marker

Integrator Settings

Integration Start Time [s] : 33.05
 Integration End Time [s] : 137
 Slope Threshold : 0.8
 Height Threshold [FU] : 5
 Area Threshold : 0.1
 Width Threshold [s] : 0.6
 Baseline Plateau [s] : 0.5

Filter Settings

Filter Width [s] : 0.5
 Polynomial Order : 4

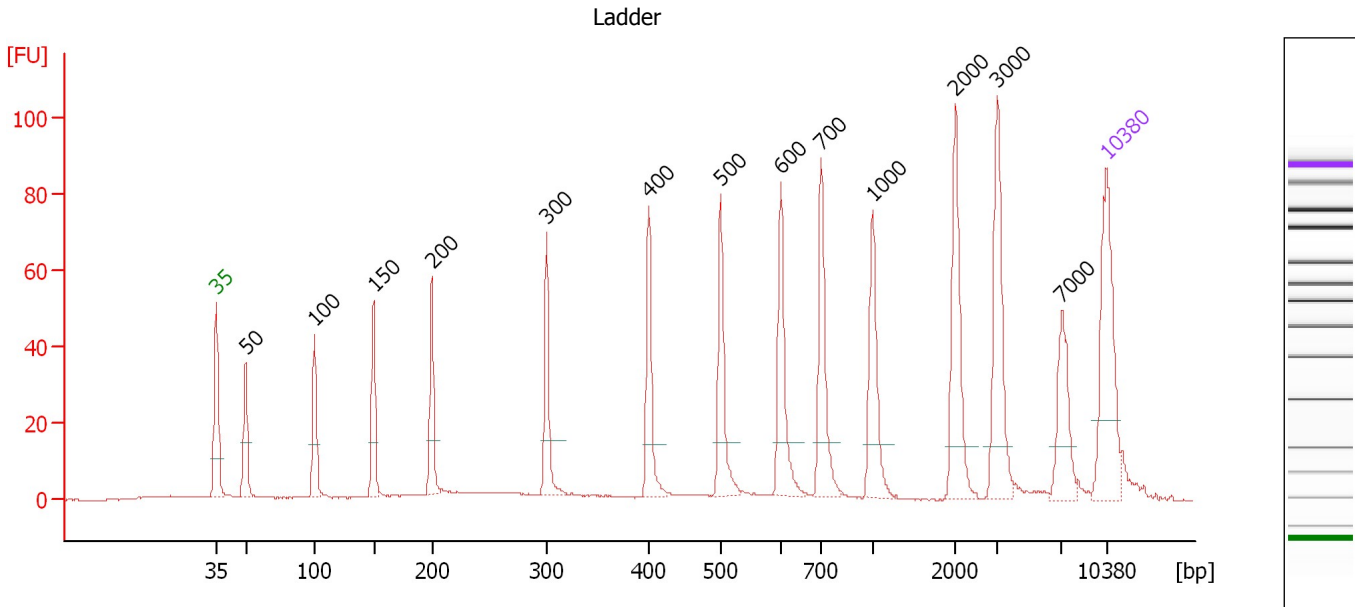
Ladder

Ladder Peak	Size	Area
1	35	160
2	50	210
3	100	208
4	150	221
5	200	242
6	300	270
7	400	305
8	500	306
9	600	336
10	700	321
11	1000	366
12	2000	413
13	3000	411
14	7000	400
15	10380	214

Assay Class: High Sensitivity DNA Assay
 Data Path: C:\...ents and Settings\Bioanalyzer\2013-12-16\2013-12-16_001.xad

Created: 12/16/2013 9:45:21 AM
 Modified: 12/16/2013 10:28:55 AM

Electropherogram Summary



Overall Results for Ladder

Noise: 0.1

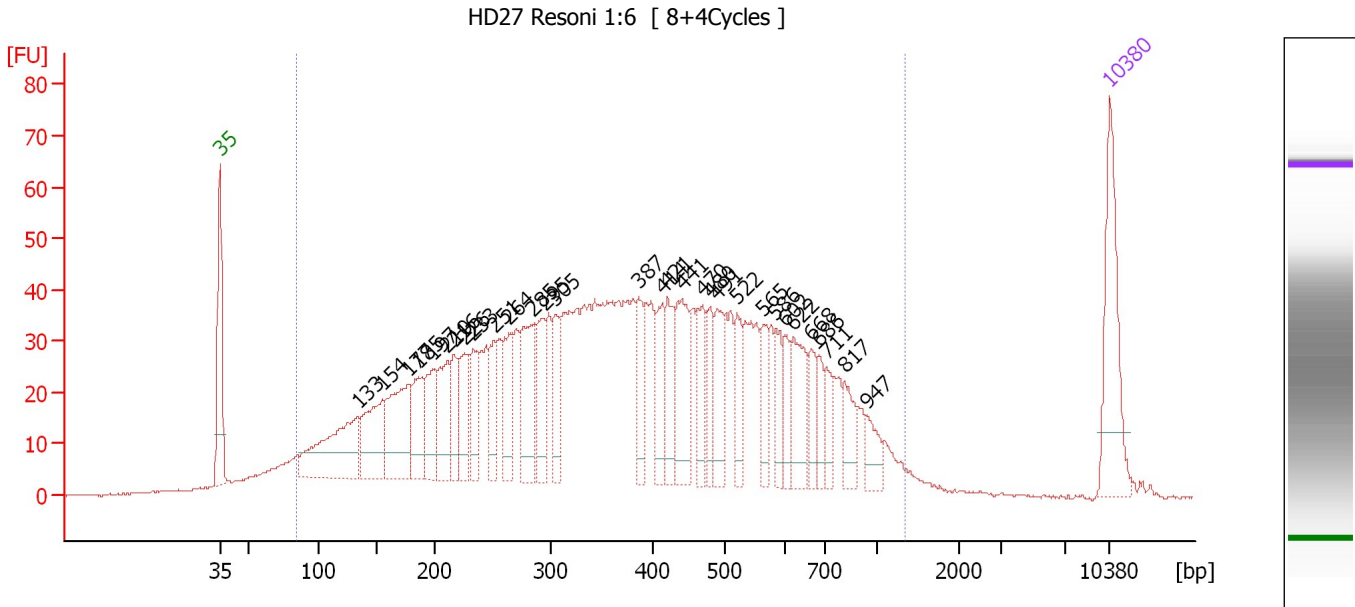
Peak table for Ladder

Peak	Aligned Migration Time [s]	Size [bp]	Conc. [pg/μl]	Molarity [pmol/l]	Observations
1	43.00	35	125.00	5,411.3	Lower Marker
2	45.31	50	150.00	4,545.5	Ladder Peak
3	50.71	100	150.00	2,272.7	Ladder Peak
4	55.37	150	150.00	1,515.2	Ladder Peak
5	59.93	200	150.00	1,136.4	Ladder Peak
6	68.95	300	150.00	757.6	Ladder Peak
7	76.99	400	150.00	568.2	Ladder Peak
8	82.65	500	150.00	454.5	Ladder Peak
9	87.39	600	150.00	378.8	Ladder Peak
10	90.53	700	150.00	324.7	Ladder Peak
11	94.60	1,000	150.00	227.3	Ladder Peak
12	101.14	2,000	150.00	113.6	Ladder Peak
13	104.41	3,000	150.00	75.8	Ladder Peak
14	109.48	7,000	150.00	32.5	Ladder Peak
15	113.00	10,380	75.00	10.9	Upper Marker

Assay Class: High Sensitivity DNA Assay
 Data Path: C:\...ents and Settings\Bioanalyzer\2013-12-16\2013-12-16_001.xad

Created: 12/16/2013 9:45:21 AM
 Modified: 12/16/2013 10:28:55 AM

Electropherogram Summary Continued ...



Overall Results for sample 1 : HD27 Resoni 1:6

Number of peaks found: 31 Corr. Area 1: 1,887.9
 Noise: 0.2

Peak table for sample 1 : HD27 Resoni 1:6

Peak	Aligned Migration Time [s]	Size [bp]	Conc. [pg/μl]	Molarity [pmol/l]	Observations
1	43.00	35	125.00	5,411.3	Lower Marker
2	53.82	133	143.82	1,633.4	
3	55.75	154	91.15	895.6	
4	57.81	177	115.12	987.1	
5	58.60	185	62.42	510.1	
6	59.69	197	56.32	432.4	
7	60.87	210	71.49	514.9	
8	61.41	216	40.59	284.2	
9	62.25	226	60.84	408.4	
10	62.92	233	49.79	323.5	
11	64.56	251	41.58	250.7	
12	65.73	264	54.40	311.8	
13	67.58	285	86.52	460.3	
14	68.46	295	59.68	307.0	
15	69.38	305	43.97	218.1	
16	75.92	387	42.87	168.0	
17	77.77	414	42.42	155.4	
18	78.19	421	50.96	183.4	
19	79.32	441	71.41	245.3	
20	80.96	470	45.50	146.7	
21	81.54	480	34.78	109.7	
22	82.13	491	46.65	144.0	
23	83.68	522	33.82	98.2	
24	85.74	565	32.50	87.1	
25	86.70	586	30.20	78.2	

Assay Class: High Sensitivity DNA Assay
 Data Path: C:\...ents and Settings\Bioanalyzer\2013-12-16\2013-12-16_001.xad

Created: 12/16/2013 9:45:21 AM
 Modified: 12/16/2013 10:28:55 AM

Electropherogram Summary Continued ...

... Peak table for sample 1 : HD27 Resoni 1:6

Peak	Aligned Migration Time [s]	Size [bp]	Conc. [pg/μl]	Molarity [pmol/l]	Observations
26	87.46	602	26.97	67.9	
27	88.09	622	55.03	134.0	
28	89.51	668	27.71	62.9	
29	90.10	686	19.98	44.1	
30	90.69	711	21.21	45.2	
31	92.11	817	30.12	55.9	
32	93.87	947	20.10	32.2	
33	113.00	10,380	75.00	10.9	Upper Marker

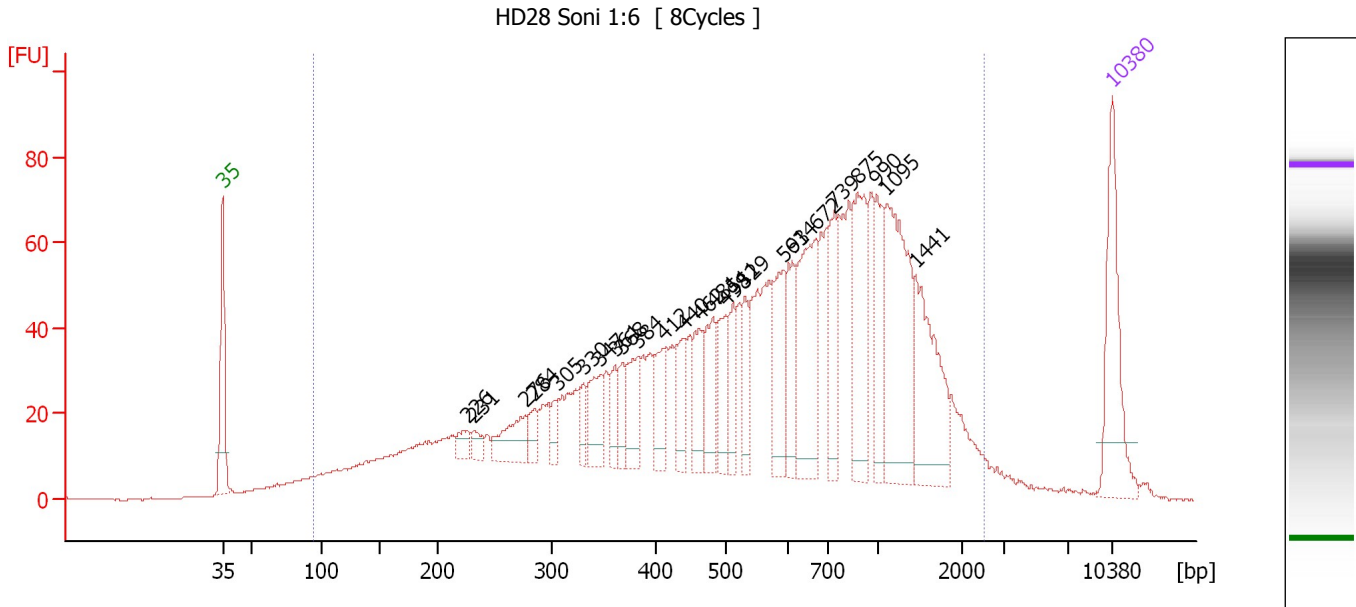
Region table for sample 1 : HD27 Resoni 1:6

From [bp]	To [bp]	Average Size [bp]	Molarity [pmol/l]	Conc. [pg/μl]	Corr. Area	% of Total	Size distribution in CV [%]	Color
84	1,340	406	16,052.6	2,824.33	1,887.9	96	50.5	■

Assay Class: High Sensitivity DNA Assay
 Data Path: C:\...ents and Settings\Bioanalyzer\2013-12-16\2013-12-16_001.xad

Created: 12/16/2013 9:45:21 AM
 Modified: 12/16/2013 10:28:55 AM

Electropherogram Summary Continued ...



Overall Results for sample 2 : HD28 Soni 1:6

Number of peaks found: 25 Corr. Area 1: 2,209.3
 Noise: 0.2

Peak table for sample 2 : HD28 Soni 1:6

Peak	Aligned Migration Time [s]	Size [bp]	Conc. [pg/μl]	Molarity [pmol/l]	Observations
1	43.00	35	125.00	5,411.3	Lower Marker
2	62.29	226	17.37	116.3	
3	62.75	231	14.36	94.1	
4	66.78	276	48.71	267.4	
5	67.54	284	17.45	93.0	
6	69.34	305	18.11	90.0	
7	71.39	330	20.05	91.9	
8	72.69	347	45.52	199.0	
9	73.87	361	25.99	109.0	
10	74.46	368	25.26	103.9	
11	75.67	384	44.83	177.1	
12	77.69	412	43.11	158.4	
13	79.24	440	36.75	126.7	
14	80.50	462	42.85	140.6	
15	81.59	481	49.01	154.3	
16	82.55	498	41.88	127.4	
17	83.18	511	38.74	114.8	
18	84.02	529	35.30	101.1	
19	87.08	593	61.91	158.0	
20	87.84	614	48.76	120.3	
21	89.64	672	114.40	258.1	
22	91.06	739	53.18	109.0	
23	92.91	875	96.64	167.3	
24	94.46	990	49.19	75.3	
25	95.22	1,095	140.12	194.0	

Assay Class: High Sensitivity DNA Assay
 Data Path: C:\...ents and Settings\Bioanalyzer\2013-12-16\2013-12-16_001.xad

Created: 12/16/2013 9:45:21 AM
 Modified: 12/16/2013 10:28:55 AM

Electropherogram Summary Continued ...

... Peak table for sample 2 : HD28 Soni 1:6

Peak	Aligned Migration Time [s]	Size [bp]	Conc. [pg/ μ l]	Molarity [pmol/l]	Observations
26	97.48	1,441	96.57	101.5	
27	113.00	10,380	75.00	10.9	Upper Marker

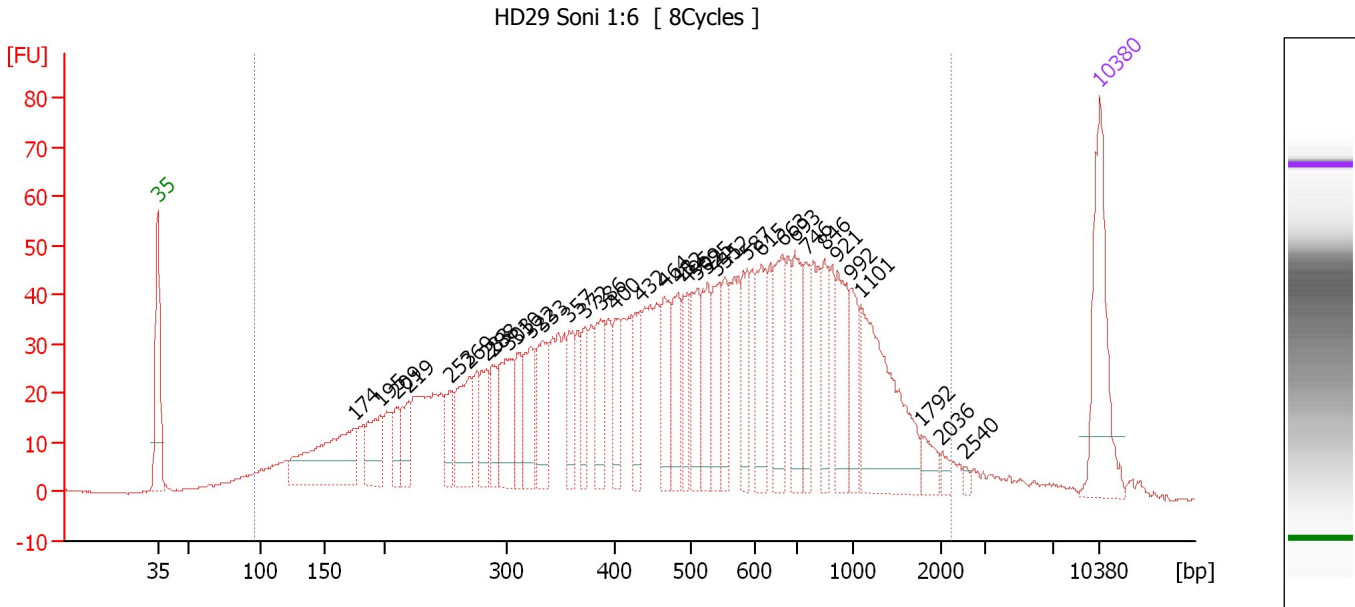
Region table for sample 2 : HD28 Soni 1:6

From [bp]	To [bp]	Average Size [bp]	Molarity [pmol/l]	Conc. [pg/ μ l]	Corr. Area	% of Total	Size distribution in CV [%]	Color
94	2,521	698	9,857.3	2,496.63	2,209.3	96	63.7	

Assay Class: High Sensitivity DNA Assay
 Data Path: C:\...ents and Settings\Bioanalyzer\2013-12-16\2013-12-16_001.xad

Created: 12/16/2013 9:45:21 AM
 Modified: 12/16/2013 10:28:55 AM

Electropherogram Summary Continued ...



Overall Results for sample 3 : HD29 Soni 1:6

Number of peaks found: 36 Corr. Area 1: 1,960.8
 Noise: 0.2

Peak table for sample 3 : HD29 Soni 1:6

Peak	Aligned Migration Time [s]	Size [bp]	Conc. [pg/μl]	Molarity [pmol/l]	Observations
1	43.00	35	125.00	5,411.3	Lower Marker
2	57.57	174	124.29	1,081.2	
3	59.52	195	48.95	379.5	
4	60.79	209	24.93	180.3	
5	61.67	219	34.71	239.8	
6	64.71	253	31.01	185.7	
7	66.15	269	63.53	357.9	
8	67.42	283	35.63	190.7	
9	67.84	288	32.03	168.7	
10	69.15	303	64.71	324.1	
11	69.74	310	33.35	163.1	
12	70.75	322	50.17	235.7	
13	71.60	333	56.28	256.1	
14	73.54	357	32.35	137.3	
15	74.77	372	31.99	130.2	
16	75.87	386	44.80	175.9	
17	77.01	400	36.83	139.4	
18	78.82	432	39.79	139.5	
19	80.64	464	49.40	161.2	
20	81.65	482	44.58	140.0	
21	82.37	495	34.19	104.7	
22	83.09	509	44.57	132.6	
23	83.85	525	46.78	134.9	
24	84.61	541	41.18	115.3	
25	85.12	552	36.35	99.8	

Assay Class: High Sensitivity DNA Assay
 Data Path: C:\...ents and Settings\Bioanalyzer\2013-12-16\2013-12-16_001.xad

Created: 12/16/2013 9:45:21 AM
 Modified: 12/16/2013 10:28:55 AM

Electropherogram Summary Continued ...

... Peak table for sample 3 : HD29 Soni 1:6

Peak	Aligned Migration Time [s]	Size [bp]	Conc. [pg/μl]	Molarity [pmol/l]	Observations
26	86.77	587	40.67	105.0	
27	87.86	615	48.66	119.8	
28	89.39	663	56.15	128.2	
29	90.31	693	48.56	106.2	
30	91.16	746	33.57	68.2	
31	92.51	846	31.54	56.5	
32	93.53	921	53.67	88.3	
33	94.50	992	31.08	47.5	
34	95.26	1,101	122.76	169.0	
35	99.78	1,792	13.56	11.5	
36	101.26	2,036	5.52	4.1	
37	102.90	2,540	2.95	1.8	
38	113.00	10,380	75.00	10.9	Upper Marker

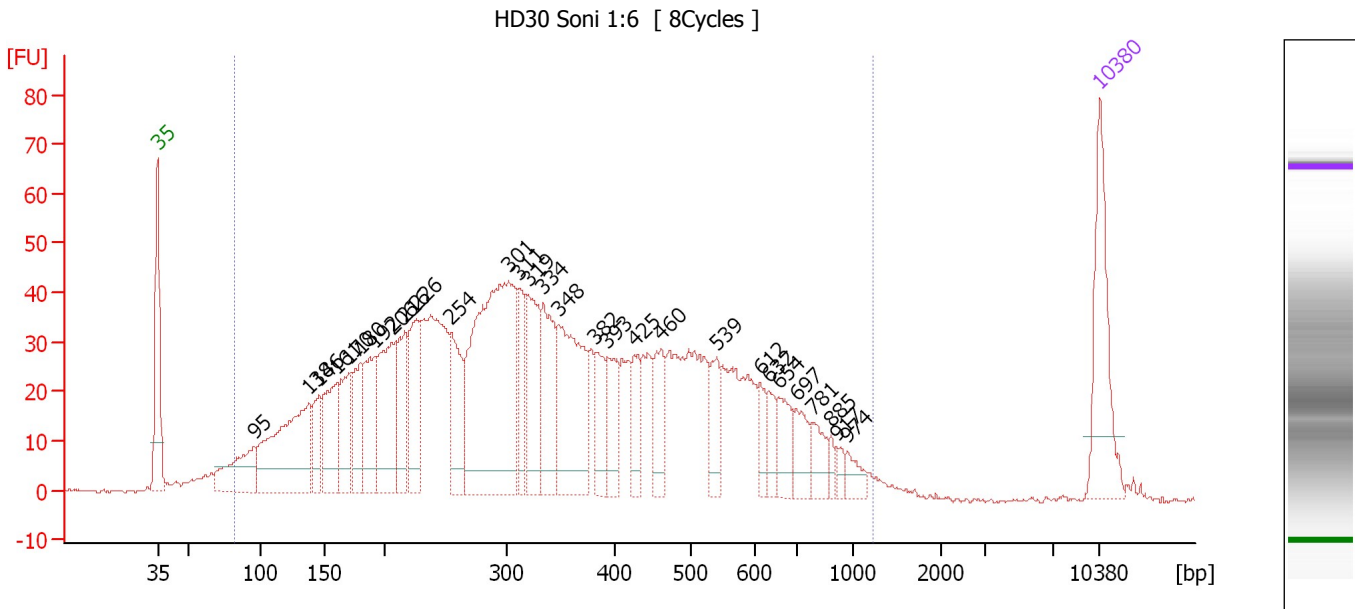
Region table for sample 3 : HD29 Soni 1:6

From [bp]	To [bp]	Average Size [bp]	Molarity [pmol/l]	Conc. [pg/μl]	Corr. Area	% of Total	Size distribution in CV [%]	Color
96	2,233	578	10,937.4	2,496.83	1,960.8	97	62.9	

Assay Class: High Sensitivity DNA Assay
 Data Path: C:\...ents and Settings\Bioanalyzer\2013-12-16\2013-12-16_001.xad

Created: 12/16/2013 9:45:21 AM
 Modified: 12/16/2013 10:28:55 AM

Electropherogram Summary Continued ...



Overall Results for sample 4 : HD30 Soni 1:6

Number of peaks found: 29 Corr. Area 1: 1,782.7
 Noise: 0.4

Peak table for sample 4 : HD30 Soni 1:6

Peak	Aligned Migration Time [s]	Size [bp]	Conc. [pg/μl]	Molarity [pmol/l]	Observations
1	43.00	35	125.00	5,411.3	Lower Marker
2	50.17	95	79.25	1,264.5	
3	54.24	138	192.70	2,116.4	
4	54.97	146	44.87	466.3	
5	56.35	161	82.47	777.3	
6	57.21	170	70.15	624.7	
7	58.06	180	60.48	510.4	
8	59.18	192	79.19	625.7	
9	60.47	206	114.05	839.2	
10	61.37	216	74.87	525.4	
11	62.27	226	79.34	532.1	
12	64.80	254	73.36	437.5	
13	69.05	301	329.44	1,656.6	
14	69.82	311	49.89	243.1	
15	70.51	319	86.05	408.1	
16	71.67	334	86.28	391.6	
17	72.83	348	145.87	634.7	
18	75.53	382	42.48	168.6	
19	76.43	393	44.40	171.2	
20	78.41	425	33.22	118.4	
21	80.38	460	43.54	143.4	
22	84.50	539	35.72	100.4	
23	87.76	612	18.70	46.3	
24	88.41	632	20.12	48.2	
25	89.09	654	33.67	78.0	

Assay Class: High Sensitivity DNA Assay
 Data Path: C:\...ents and Settings\Bioanalyzer\2013-12-16\2013-12-16_001.xad


Created: 12/16/2013 9:45:21 AM
 Modified: 12/16/2013 10:28:55 AM

Electropherogram Summary Continued ...

... Peak table for sample 4 : HD30 Soni 1:6

Peak	Aligned Migration Time [s]	Size [bp]	Conc. [pg/μl]	Molarity [pmol/l]	Observations
26	90.42	697	30.37	66.0	
27	91.63	781	22.94	44.5	
28	93.04	885	8.10	13.9	
29	93.47	917	7.84	13.0	
30	94.24	974	13.52	21.0	
31	113.00	10,380	75.00	10.9	Upper Marker

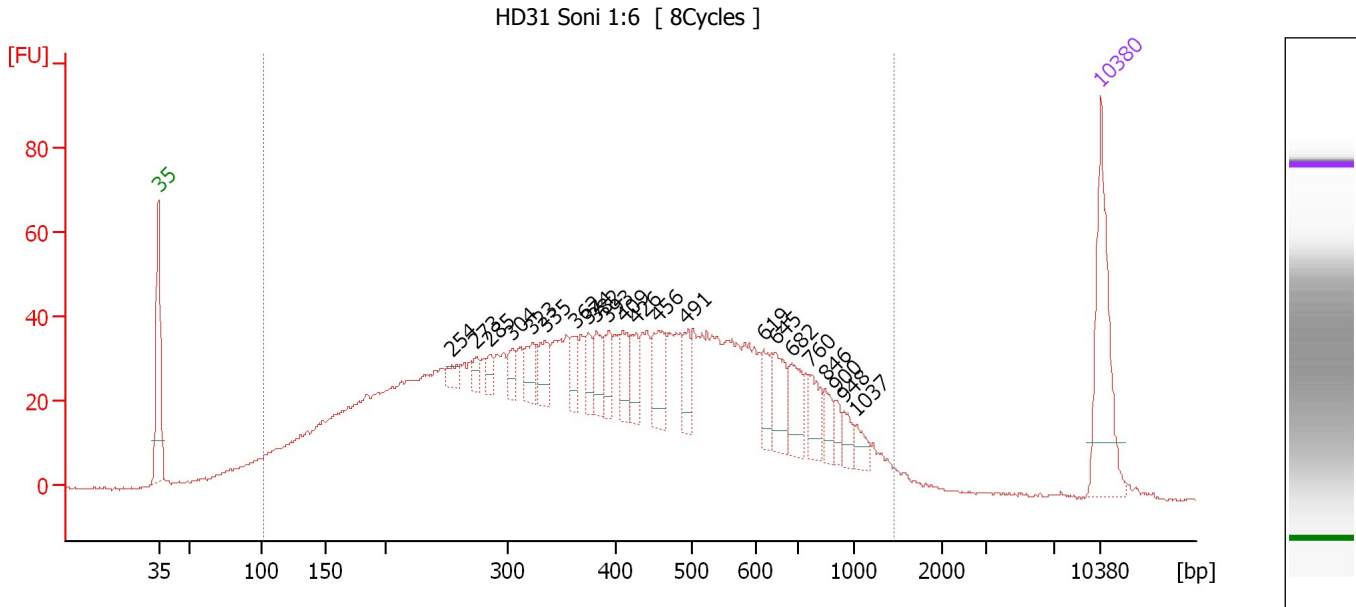
Region table for sample 4 : HD30 Soni 1:6

From [bp]	To [bp]	Average Size [bp]	Molarity [pmol/l]	Conc. [pg/μl]	Corr. Area	% of Total	Size distribution in CV [%]	Color
82	1,233	366	15,960.8	2,619.21	1,782.7	97	50.4	

Assay Class: High Sensitivity DNA Assay
 Data Path: C:\...ents and Settings\Bioanalyzer\2013-12-16\2013-12-16_001.xad

Created: 12/16/2013 9:45:21 AM
 Modified: 12/16/2013 10:28:55 AM

Electropherogram Summary Continued ...



Overall Results for sample 5 : HD31 Soni 1:6

Number of peaks found: 22 Corr. Area 1: 1,842.2
 Noise: 0.3

Peak table for sample 5 : HD31 Soni 1:6

Peak	Aligned Migration Time [s]	Size [bp]	Conc. [pg/μl]	Molarity [pmol/l]	Observations
1	43.00	35	125.00	5,411.3	Lower Marker
2	64.82	254	10.87	64.8	
3	66.55	273	9.44	52.3	
4	67.63	285	11.54	61.3	
5	69.27	304	14.92	74.4	
6	70.78	323	24.74	116.1	
7	71.72	335	23.90	108.2	
8	73.97	362	18.82	78.7	
9	74.92	374	17.99	72.8	
10	75.52	382	25.12	99.7	
11	76.43	393	19.89	76.7	
12	77.50	409	27.49	101.8	
13	78.45	426	21.43	76.2	
14	80.13	456	39.05	129.9	
15	82.12	491	23.24	71.8	
16	87.98	619	21.67	53.1	
17	88.80	645	33.51	78.7	
18	89.97	682	33.63	74.7	
19	91.35	760	21.94	43.7	
20	92.51	846	14.81	26.5	
21	93.25	900	9.18	15.4	
22	93.89	948	10.31	16.5	
23	94.84	1,037	10.71	15.6	
24	113.00	10,380	75.00	10.9	Upper Marker

Assay Class: High Sensitivity DNA Assay
Data Path: C:\...ents and Settings\Bioanalyzer\2013-12-16\2013-12-16_001.xad

Created: 12/16/2013 9:45:21 AM
Modified: 12/16/2013 10:28:55 AM

Electropherogram Summary Continued ...

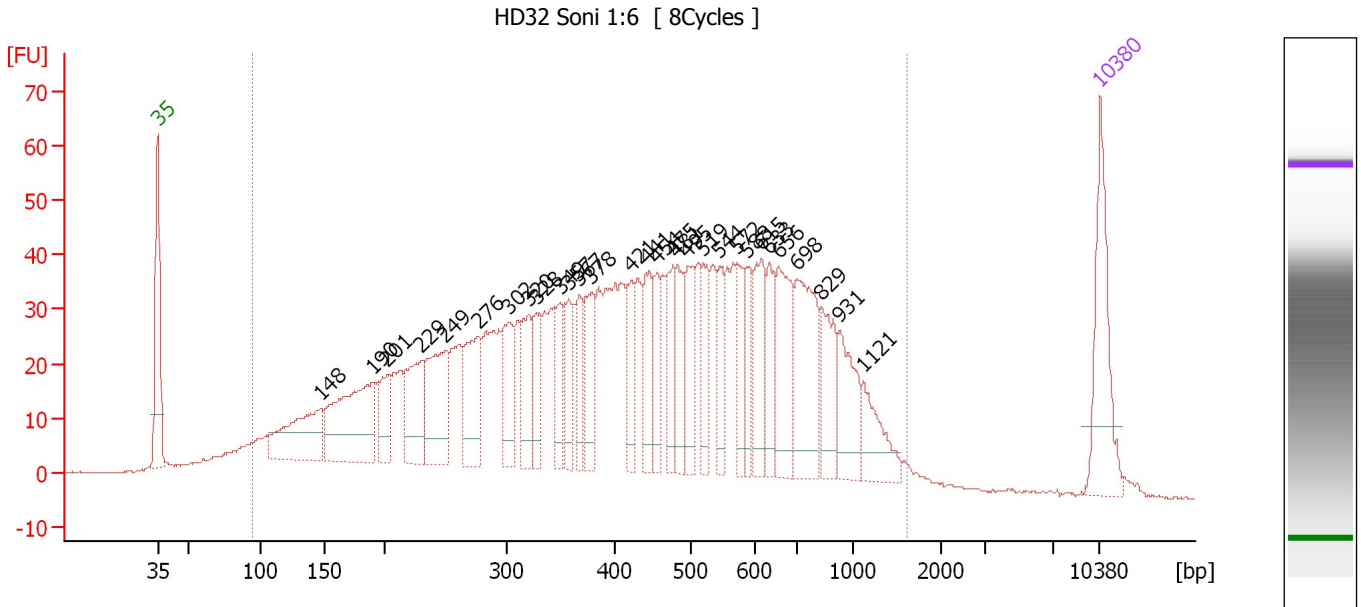
... Region table for sample 5 : HD31 Soni 1:6

From [bp]	To [bp]	Average Size [bp]	Molarity [pmol/l]	Conc. [pg/μl]	Corr. Area	% of Total	Size distribution in CV [%]	Color
102	1,459	433	12,339.9	2,378.51	1,842.2	96	51.8	■

Assay Class: High Sensitivity DNA Assay
 Data Path: C:\...ents and Settings\Bioanalyzer\2013-12-16\2013-12-16_001.xad

Created: 12/16/2013 9:45:21 AM
 Modified: 12/16/2013 10:28:55 AM

Electropherogram Summary Continued ...



Overall Results for sample 6 : HD32 Soni 1:6

Number of peaks found: 30 Corr. Area 1: 1,833.6
 Noise: 0.2

Peak table for sample 6 : HD32 Soni 1:6

Peak	Aligned Migration Time [s]	Size [bp]	Conc. [pg/μl]	Molarity [pmol/l]	Observations
1	43.00	35	125.00	5,411.3	Lower Marker
2	55.16	148	113.42	1,163.0	
3	59.01	190	160.80	1,283.3	
4	60.05	201	45.39	341.7	
5	62.56	229	82.61	546.4	
6	64.37	249	107.57	653.9	
7	66.79	276	82.16	450.8	
8	69.09	302	61.42	308.4	
9	70.56	320	53.19	251.8	
10	71.16	328	38.62	178.6	
11	72.89	349	39.17	170.0	
12	73.54	357	39.12	166.0	
13	74.32	367	39.15	161.7	
14	75.23	378	54.05	216.6	
15	78.17	421	39.33	141.6	
16	79.30	441	55.79	191.8	
17	80.08	454	40.07	133.6	
18	81.24	475	46.74	149.1	
19	81.59	481	46.73	147.1	
20	82.37	495	56.12	171.8	
21	83.54	519	45.54	133.0	
22	84.75	544	37.69	104.9	
23	86.05	572	36.80	97.5	
24	86.83	588	35.54	91.6	
25	87.86	615	60.12	148.1	

Assay Class: High Sensitivity DNA Assay
 Data Path: C:\...ents and Settings\Bioanalyzer\2013-12-16\2013-12-16_001.xad


Created: 12/16/2013 9:45:21 AM
 Modified: 12/16/2013 10:28:55 AM

Electropherogram Summary Continued ...

... Peak table for sample 6 : HD32 Soni 1:6

Peak	Aligned Migration Time [s]	Size [bp]	Conc. [pg/ μ l]	Molarity [pmol/l]	Observations
26	88.43	633	40.51	97.0	
27	89.16	656	81.43	188.0	
28	90.46	698	109.06	236.8	
29	92.28	829	57.93	105.9	
30	93.66	931	54.77	89.2	
31	95.39	1,121	42.16	57.0	
32	113.00	10,380	75.00	10.9	Upper Marker

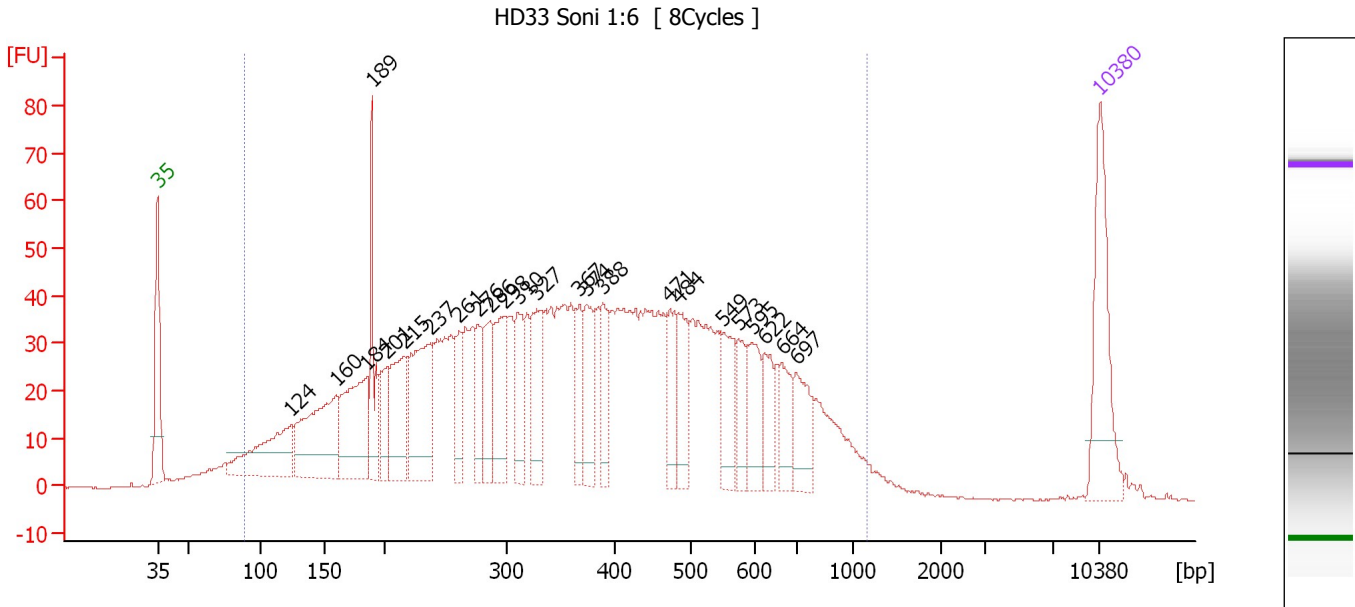
Region table for sample 6 : HD32 Soni 1:6

From [bp]	To [bp]	Average Size [bp]	Molarity [pmol/l]	Conc. [pg/ μ l]	Corr. Area	% of Total	Size distribution in CV [%]	Color
94	1,615	473	14,770.8	2,974.40	1,833.6	96	53.1	

Assay Class: High Sensitivity DNA Assay
 Data Path: C:\...ents and Settings\Bioanalyzer\2013-12-16\2013-12-16_001.xad

Created: 12/16/2013 9:45:21 AM
 Modified: 12/16/2013 10:28:55 AM

Electropherogram Summary Continued ...



Overall Results for sample 7 : HD33 Soni 1:6

Number of peaks found: 24 Corr. Area 1: 1,914.7
 Noise: 0.2

Peak table for sample 7 : HD33 Soni 1:6

Peak	Aligned Migration Time [s]	Size [bp]	Conc. [pg/μl]	Molarity [pmol/l]	Observations
1	43.00	35	125.00	5,411.3	Lower Marker
2	52.93	124	108.71	1,329.9	
3	56.29	160	142.50	1,348.8	
4	58.46	184	116.71	961.5	
5	58.90	189	73.52	590.4	
6	60.03	201	37.86	285.3	
7	61.29	215	86.68	610.6	
8	63.26	237	125.55	803.1	
9	65.43	261	43.20	250.8	
10	66.78	276	40.75	223.7	
11	67.70	286	56.08	296.9	
12	68.74	298	68.77	350.0	
13	69.79	310	49.62	242.1	
14	71.14	327	67.06	310.5	
15	74.32	367	37.18	153.6	
16	74.89	374	53.59	217.2	
17	76.06	388	38.55	150.4	
18	81.03	471	44.53	143.2	
19	81.72	484	45.63	143.0	
20	84.99	549	47.05	129.8	
21	86.12	573	29.28	77.4	
22	87.17	595	44.61	113.5	
23	88.08	622	33.26	81.0	
24	89.39	664	33.49	76.5	
25	90.44	697	44.28	96.3	

Assay Class: High Sensitivity DNA Assay
 Data Path: C:\...ents and Settings\Bioanalyzer\2013-12-16\2013-12-16_001.xad


Created: 12/16/2013 9:45:21 AM
 Modified: 12/16/2013 10:28:55 AM

Electropherogram Summary Continued ...

... Peak table for sample 7 : HD33 Soni 1:6

Peak	Aligned Migration Time [s]	Size [bp]	Conc. [pg/ μ l]	Molarity [pmol/l]	Observations
26	113.00	10,380	75.00	10.9	Upper Marker

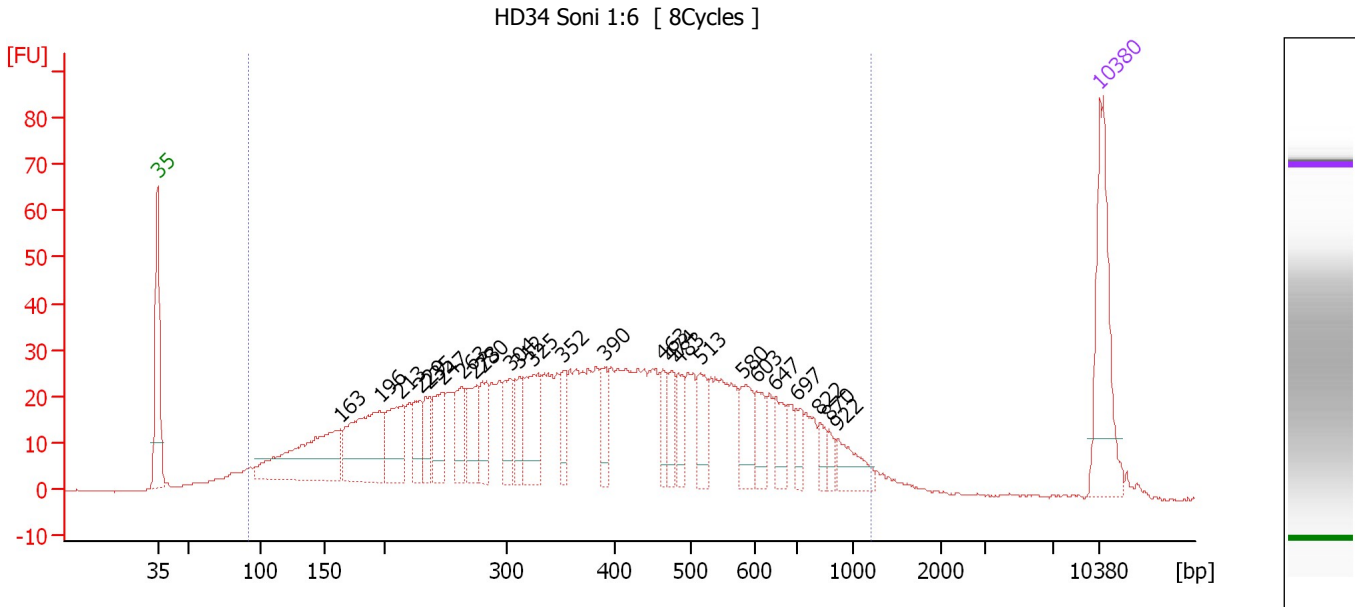
Region table for sample 7 : HD33 Soni 1:6

From [bp]	To [bp]	Average Size [bp]	Molarity [pmol/l]	Conc. [pg/ μ l]	Corr. Area	% of Total	Size distribution in CV [%]	Color
88	1,160	393	14,447.0	2,562.28	1,914.7	96	47.6	

Assay Class: High Sensitivity DNA Assay
 Data Path: C:\...ents and Settings\Bioanalyzer\2013-12-16\2013-12-16_001.xad

Created: 12/16/2013 9:45:21 AM
 Modified: 12/16/2013 10:28:55 AM

Electropherogram Summary Continued ...



Overall Results for sample 8 : HD34 Soni 1:6

Number of peaks found: 25 Corr. Area 1: 1,320.9
 Noise: 0.2

Peak table for sample 8 : HD34 Soni 1:6

Peak	Aligned Migration Time [s]	Size [bp]	Conc. [pg/μl]	Molarity [pmol/l]	Observations
1	43.00	35	125.00	5,411.3	Lower Marker
2	56.53	163	138.08	1,285.7	
3	59.54	196	113.87	881.7	
4	61.07	213	62.79	447.5	
5	62.51	229	30.22	200.4	
6	63.12	235	25.18	162.1	
7	64.17	247	35.30	216.6	
8	65.61	263	36.03	207.6	
9	66.52	273	40.08	222.3	
10	67.18	280	34.82	188.2	
11	69.23	304	32.18	160.6	
12	69.88	312	26.10	126.9	
13	70.93	325	59.82	279.2	
14	73.16	352	25.35	109.0	
15	76.17	390	25.87	100.6	
16	80.53	463	22.02	72.1	
17	81.19	474	23.33	74.6	
18	81.67	483	21.14	66.4	
19	83.28	513	29.85	88.1	
20	86.42	580	33.09	86.5	
21	87.47	603	22.21	55.9	
22	88.87	647	22.65	53.0	
23	90.44	697	14.79	32.1	
24	92.18	822	10.40	19.2	
25	92.84	870	8.17	14.2	

Assay Class: High Sensitivity DNA Assay
 Data Path: C:\...ents and Settings\Bioanalyzer\2013-12-16\2013-12-16_001.xad


Created: 12/16/2013 9:45:21 AM
 Modified: 12/16/2013 10:28:55 AM

Electropherogram Summary Continued ...

... Peak table for sample 8 : HD34 Soni 1:6

Peak	Aligned Migration Time [s]	Size [bp]	Conc. [pg/ μ l]	Molarity [pmol/l]	Observations
26	93.54	922	25.99	42.7	
27	113.00	10,380	75.00	10.9	Upper Marker

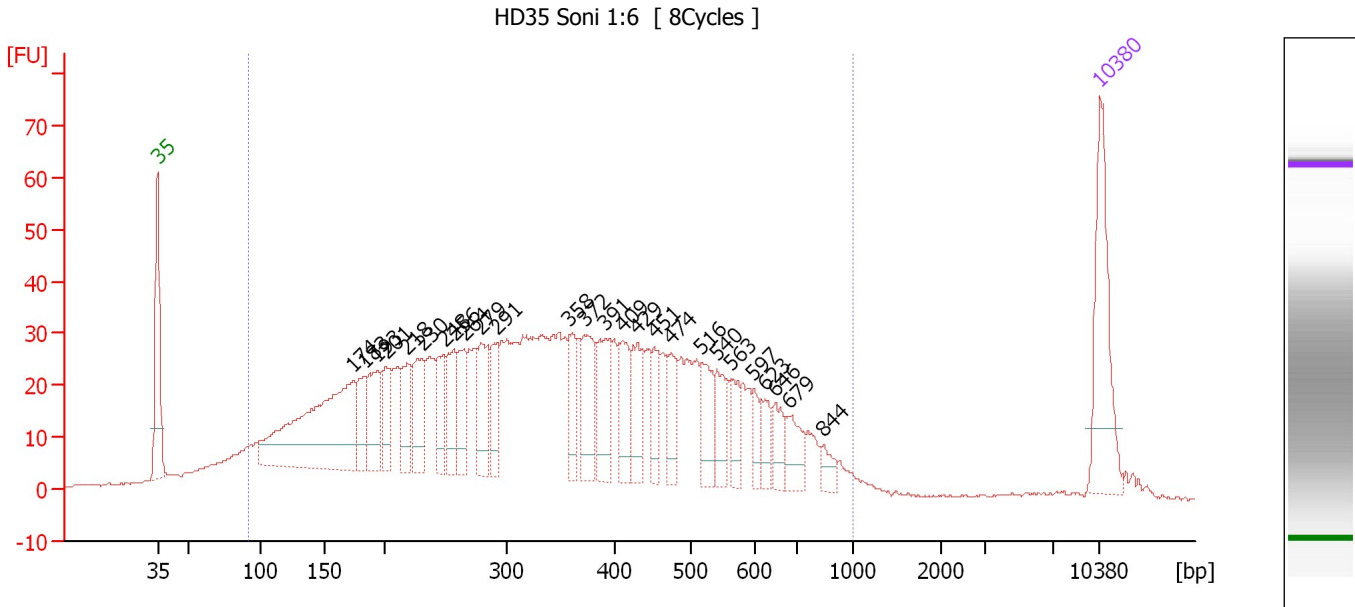
Region table for sample 8 : HD34 Soni 1:6

From [bp]	To [bp]	Average Size [bp]	Molarity [pmol/l]	Conc. [pg/ μ l]	Corr. Area	% of Total	Size distribution in CV [%]	Color
91	1,220	407	9,727.6	1,770.08	1,320.9	95	48.8	

Assay Class: High Sensitivity DNA Assay
 Data Path: C:\...ents and Settings\Bioanalyzer\2013-12-16\2013-12-16_001.xad

Created: 12/16/2013 9:45:21 AM
 Modified: 12/16/2013 10:28:55 AM

Electropherogram Summary Continued ...



Overall Results for sample 9 : HD35 Soni 1:6

Number of peaks found: 26 Corr. Area 1: 1,477.0
 Noise: 0.2

Peak table for sample 9 : HD35 Soni 1:6

Peak	Aligned Migration Time [s]	Size [bp]	Conc. [pg/μl]	Molarity [pmol/l]	Observations
1	43.00	35	125.00	5,411.3	Lower Marker
2	57.55	174	252.81	2,202.7	
3	58.38	183	36.45	301.9	
4	59.33	193	59.80	468.4	
5	59.99	201	35.78	270.3	
6	61.56	218	40.77	283.4	
7	62.65	230	51.75	340.8	
8	64.26	248	38.83	237.3	
9	65.00	256	47.16	278.9	
10	65.74	264	39.43	225.9	
11	67.04	279	52.92	287.5	
12	68.18	291	33.83	175.9	
13	73.58	358	36.35	154.0	
14	74.71	372	53.66	218.8	
15	76.24	391	55.21	214.2	
16	77.50	409	44.10	163.4	
17	78.63	429	44.46	157.1	
18	79.89	451	27.39	92.0	
19	81.16	474	31.45	100.6	
20	83.42	516	37.82	111.0	
21	84.56	540	32.67	91.6	
22	85.64	563	24.40	65.6	
23	87.26	597	17.08	43.3	
24	88.13	623	16.86	41.0	
25	88.82	646	21.46	50.4	

Assay Class: High Sensitivity DNA Assay
 Data Path: C:\...ents and Settings\Bioanalyzer\2013-12-16\2013-12-16_001.xad


Created: 12/16/2013 9:45:21 AM
 Modified: 12/16/2013 10:28:55 AM

Electropherogram Summary Continued ...

... Peak table for sample 9 : HD35 Soni 1:6

Peak	Aligned Migration Time [s]	Size [bp]	Conc. [pg/ μ l]	Molarity [pmol/l]	Observations
26	89.87	679	27.29	60.9	
27	92.48	844	11.69	21.0	
28	113.00	10,380	75.00	10.9	Upper Marker

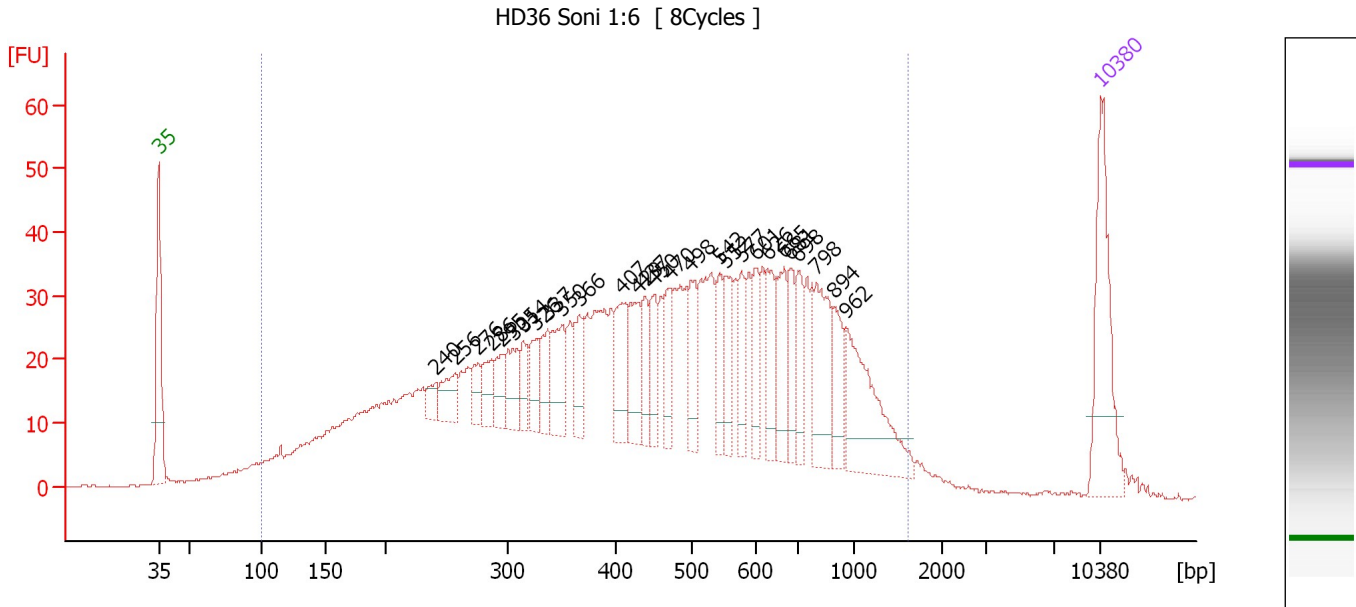
Region table for sample 9 : HD35 Soni 1:6

From [bp]	To [bp]	Average Size [bp]	Molarity [pmol/l]	Conc. [pg/ μ l]	Corr. Area	% of Total	Size distribution in CV [%]	Color
91	1,000	364	13,551.3	2,261.39	1,477.0	93	46.2	

Assay Class: High Sensitivity DNA Assay
 Data Path: C:\...ents and Settings\Bioanalyzer\2013-12-16\2013-12-16_001.xad

Created: 12/16/2013 9:45:21 AM
 Modified: 12/16/2013 10:28:55 AM

Electropherogram Summary Continued ...



Overall Results for sample 10 : HD36 Soni 1:6

Number of peaks found: 28 Corr. Area 1: 1,452.9
 Noise: 0.2

Peak table for sample 10 : HD36 Soni 1:6

Peak	Aligned Migration Time [s]	Size [bp]	Conc. [pg/μl]	Molarity [pmol/l]	Observations
1	43.00	35	125.00	5,411.3	Lower Marker
2	63.57	240	15.09	95.1	
3	65.01	256	28.80	170.2	
4	66.75	276	19.61	107.8	
5	67.71	286	25.86	136.8	
6	68.45	295	23.93	123.1	
7	69.33	305	34.08	169.5	
8	70.07	314	19.85	95.8	
9	71.07	326	26.70	124.0	
10	71.90	337	29.93	134.7	
11	72.94	350	44.71	193.7	
12	74.25	366	29.77	123.3	
13	77.39	407	41.74	155.4	
14	78.61	429	44.10	155.9	
15	79.09	437	26.55	92.0	
16	79.83	450	31.05	104.5	
17	80.96	470	28.17	90.8	
18	82.53	498	38.33	116.6	
19	84.63	542	31.26	87.4	
20	85.10	552	33.14	91.0	
21	86.28	577	28.24	74.2	
22	87.41	601	28.22	71.2	
23	88.20	626	37.06	89.7	
24	89.42	665	43.55	99.3	
25	89.94	681	28.89	64.3	

Assay Class: High Sensitivity DNA Assay
 Data Path: C:\...ents and Settings\Bioanalyzer\2013-12-16\2013-12-16_001.xad


Created: 12/16/2013 9:45:21 AM
 Modified: 12/16/2013 10:28:55 AM

Electropherogram Summary Continued ...

... Peak table for sample 10 : HD36 Soni 1:6

Peak	Aligned Migration Time [s]	Size [bp]	Conc. [pg/μl]	Molarity [pmol/l]	Observations
26	90.47	698	30.80	66.9	
27	91.86	798	64.69	122.8	
28	93.17	894	30.33	51.4	
29	94.08	962	87.45	137.7	
30	113.00	10,380	75.00	10.9	Upper Marker

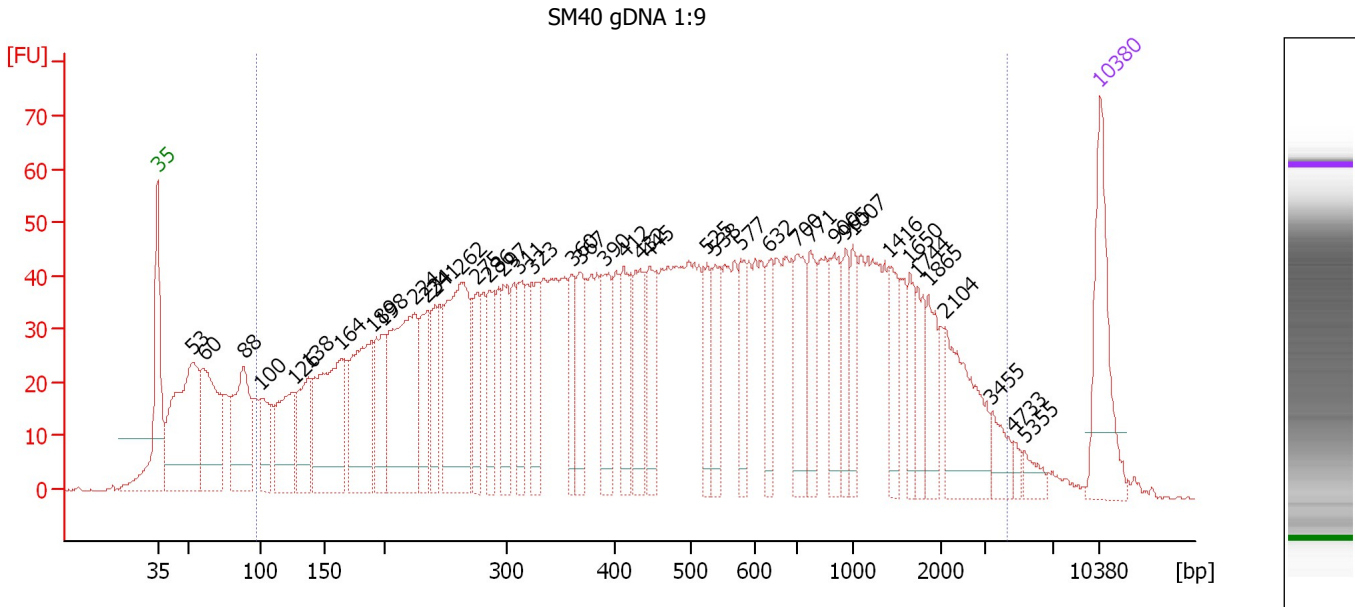
Region table for sample 10 : HD36 Soni 1:6

From [bp]	To [bp]	Average Size [bp]	Molarity [pmol/l]	Conc. [pg/μl]	Corr. Area	% of Total	Size distribution in CV [%]	Color
99	1,624	504	11,144.3	2,410.92	1,452.9	96	53.4	

Assay Class: High Sensitivity DNA Assay
 Data Path: C:\...ents and Settings\Bioanalyzer\2013-12-16\2013-12-16_001.xad

Created: 12/16/2013 9:45:21 AM
 Modified: 12/16/2013 10:28:55 AM

Electropherogram Summary Continued ...



Overall Results for sample 11 : SM40 gDNA 1:9

Number of peaks found: 41 Corr. Area 1: 2,675.1
 Noise: 0.2

Peak table for sample 11 : SM40 gDNA 1:9

Peak	Aligned Migration Time [s]	Size [bp]	Conc. [pg/μl]	Molarity [pmol/l]	Observations
1	43.00	35	125.00	5,411.3	Lower Marker
2	45.63	53	231.14	6,609.6	
3	46.42	60	142.54	3,582.9	
4	49.40	88	132.27	2,282.1	
5	50.67	100	56.71	862.9	
6	53.16	126	97.19	1,165.6	
7	54.21	138	82.15	904.4	
8	56.62	164	174.44	1,613.9	
9	58.94	189	145.28	1,163.6	
10	59.78	198	78.56	600.3	
11	62.10	224	200.94	1,359.1	
12	63.02	234	66.42	429.7	
13	63.63	241	51.58	324.2	
14	65.56	262	190.41	1,099.4	
15	66.70	275	54.61	300.8	
16	67.66	286	57.88	306.9	
17	68.67	297	57.55	293.7	
18	69.81	311	53.16	259.2	
19	70.82	323	62.57	293.3	
20	73.79	360	45.42	191.0	
21	74.36	367	58.65	241.9	
22	76.20	390	65.62	254.8	
23	77.65	412	54.87	202.0	
24	78.83	432	69.96	245.1	
25	79.53	445	63.57	216.5	

Assay Class: High Sensitivity DNA Assay
 Data Path: C:\...ents and Settings\Bioanalyzer\2013-12-16\2013-12-16_001.xad


Created: 12/16/2013 9:45:21 AM
 Modified: 12/16/2013 10:28:55 AM

Electropherogram Summary Continued ...

... Peak table for sample 11 : SM40 gDNA 1:9

Peak	Aligned Migration Time [s]	Size [bp]	Conc. [pg/μl]	Molarity [pmol/l]	Observations
26	83.83	525	38.61	111.5	
27	84.44	538	46.68	131.5	
28	86.32	577	39.40	103.4	
29	88.38	632	35.62	85.5	
30	90.53	700	61.79	133.8	
31	91.49	771	43.14	84.8	
32	93.24	900	54.75	92.2	
33	94.12	965	33.81	53.1	
34	94.65	1,007	31.00	46.6	
35	97.32	1,416	39.05	41.8	
36	98.85	1,650	26.21	24.1	
37	99.46	1,744	29.35	25.5	
38	100.25	1,865	34.27	27.8	
39	101.48	2,104	79.91	57.5	
40	104.98	3,455	20.74	9.1	
41	106.60	4,733	5.85	1.9	
42	107.39	5,355	10.57	3.0	
43	113.00	10,380	75.00	10.9	Upper Marker

Region table for sample 11 : SM40 gDNA 1:9

From [bp]	To [bp]	Average Size [bp]	Molarity [pmol/l]	Conc. [pg/μl]	Corr. Area	% of Total	Size distribution in CV [%]	Color
96	4,372	692	18,703.7	3,737.25	2,675.1	89	94.8	

Assay Class: High Sensitivity DNA Assay
Data Path: C:\...ents and Settings\Bioanalyzer\2013-12-16\2013-12-16_001.xad

Created: 12/16/2013 9:45:21 AM
Modified: 12/16/2013 10:28:55 AM

Gel Image

