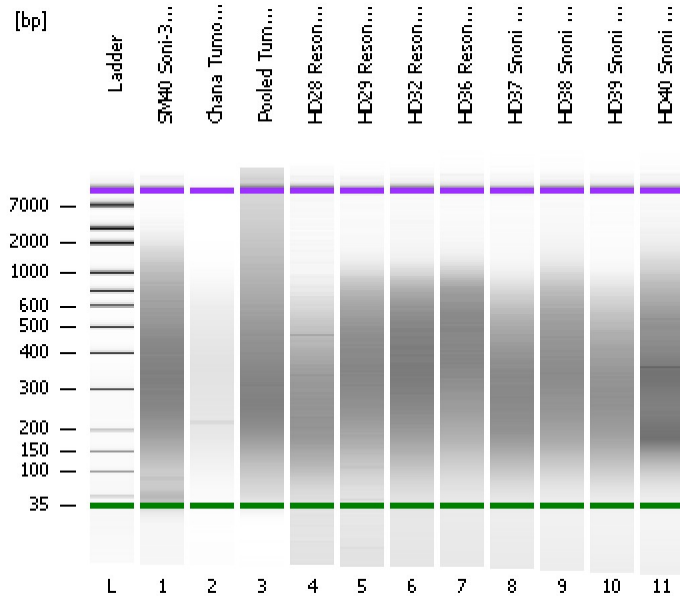


Assay Class: High Sensitivity DNA Assay  
Data Path: C:\...ents and Settings\Bioanalyzer\2013-12-16\2013-12-16\_002.xad

Created: 12/16/2013 1:18:16 PM  
Modified: 12/16/2013 2:16:56 PM

**Electrophoresis File Run Summary**



Instrument Information:

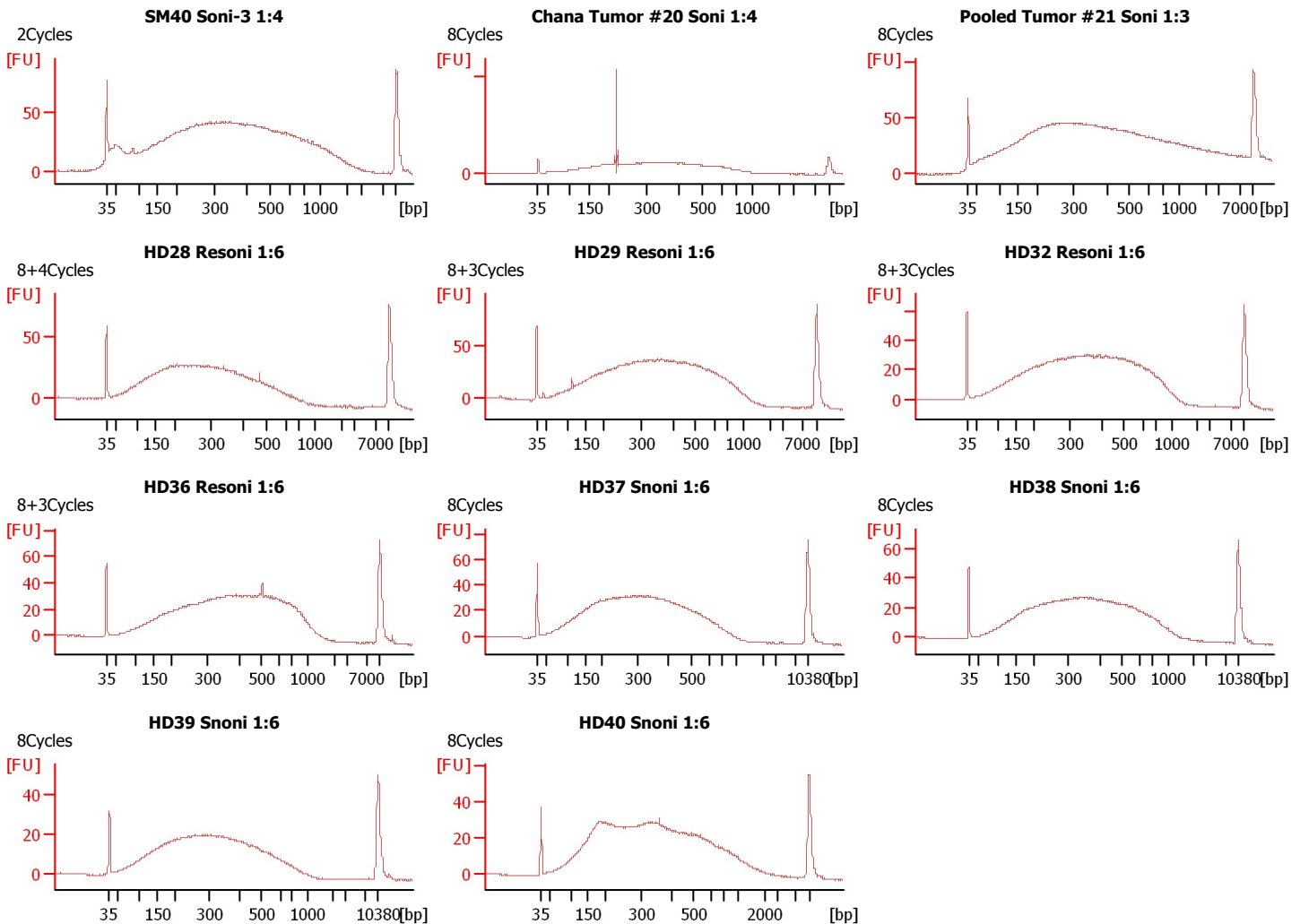
Instrument Name: DE13701086      Firmware: C.01.069  
Serial#: DE13701086      Type: G2938B

Assay Information:

Assay Origin Path: C:\Program Files\Agilent\2100 bioanalyzer\2100 expert\assays\dsDNA\High Sensitivity DNA.xsy  
Assay Class: High Sensitivity DNA Assay  
Version: 1.03  
Assay Comments: Copyright © 2003-2010 Agilent Technologies

Chip Information:

Chip Lot #:   
Reagent Kit Lot #:   
Chip Comments:



Assay Class: High Sensitivity DNA Assay  
 Data Path: C:\...ents and Settings\Bioanalyzer\2013-12-16\2013-12-16\_002.xad

Created: 12/16/2013 1:18:16 PM  
 Modified: 12/16/2013 2:16:56 PM

**Electrophoresis File Run Summary (Chip Summary)**

Sample Name	Sample Comment	Rest. Digest	Status	Observation	Result Label	Result Color
SM40 Soni-3 1:4	2Cycles	<input type="checkbox"/>	✓			
Chana Tumor #20 Soni 1:4	8Cycles	<input type="checkbox"/>	✓			
Pooled Tumor #21 Soni 1:3	8Cycles	<input type="checkbox"/>	✓			
HD28 Resoni 1:6	8+4Cycles	<input type="checkbox"/>	✓			
HD29 Resoni 1:6	8+3Cycles	<input type="checkbox"/>	✓			
HD32 Resoni 1:6	8+3Cycles	<input type="checkbox"/>	✓			
HD36 Resoni 1:6	8+3Cycles	<input type="checkbox"/>	✓			
HD37 Snoni 1:6	8Cycles	<input type="checkbox"/>	✓			
HD38 Snoni 1:6	8Cycles	<input type="checkbox"/>	✓			
HD39 Snoni 1:6	8Cycles	<input type="checkbox"/>	✓			
HD40 Snoni 1:6	8Cycles	<input type="checkbox"/>	✓			
Ladder		<input type="checkbox"/>	✓			

**Chip Lot #**

**Reagent Kit Lot #**

**Chip Comments :**

Assay Class: High Sensitivity DNA Assay  
 Data Path: C:\...ents and Settings\Bioanalyzer\2013-12-16\2013-12-16\_002.xad

Created: 12/16/2013 1:18:16 PM  
 Modified: 12/16/2013 2:16:56 PM

**Electrophoresis Assay Details**

**General Analysis Settings**

Number of Available Sample and Ladder Wells (Max.) : 12  
 Minimum Visible Range [s] : 32  
 Maximum Visible Range [s] : 138  
 Start Analysis Time Range [s] : 33  
 End Analysis Time Range [s] : 137.5  
 Ladder Concentration [pg/μl] : 1950  
 Uses Standard Area for Ladder Fragments  
 Lower Marker Concentration [pg/μl] : 125  
 Upper Marker Concentration [pg/μl] : 75  
 Used Upper Marker for Quantitation  
 Standard Curve Fit is Point to Point  
 Show Data Aligned to Lower and Upper Marker

**Integrator Settings**

Integration Start Time [s] : 33.05  
 Integration End Time [s] : 137  
 Slope Threshold : 0.8  
 Height Threshold [FU] : 5  
 Area Threshold : 0.1  
 Width Threshold [s] : 0.6  
 Baseline Plateau [s] : 0.5

**Filter Settings**

Filter Width [s] : 0.5  
 Polynomial Order : 4

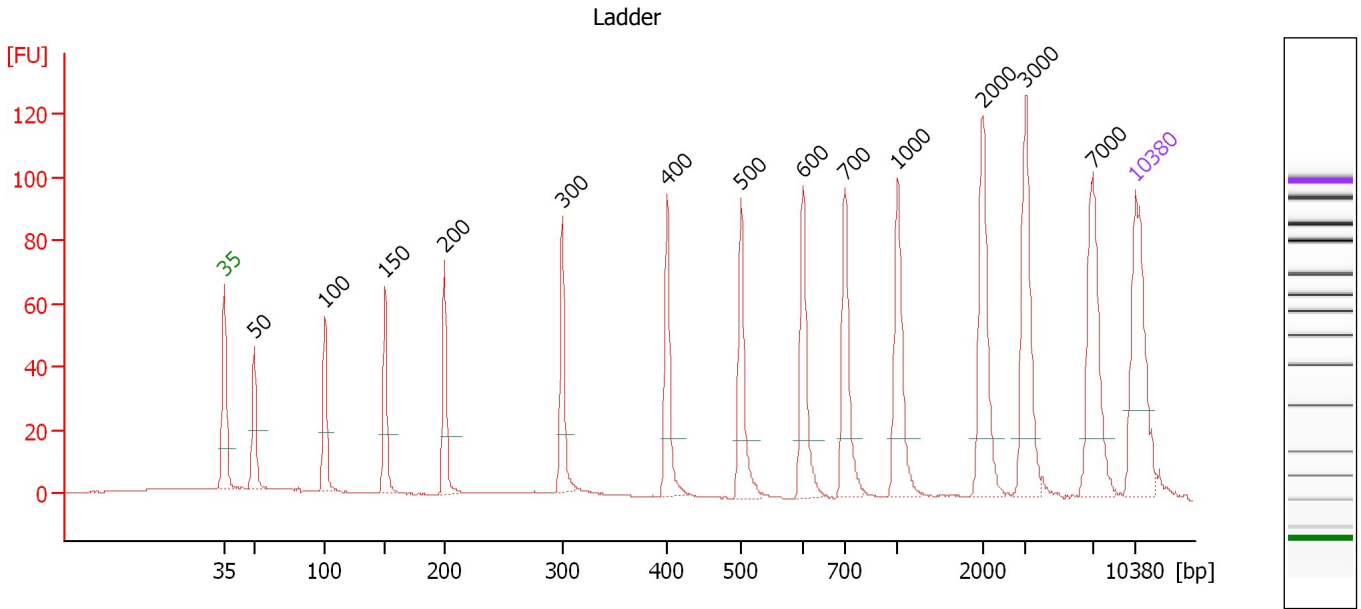
**Ladder**

Ladder Peak	Size	Area
1	35	160
2	50	210
3	100	208
4	150	221
5	200	242
6	300	270
7	400	305
8	500	306
9	600	336
10	700	321
11	1000	366
12	2000	413
13	3000	411
14	7000	400
15	10380	214

Assay Class: High Sensitivity DNA Assay  
 Data Path: C:\...ents and Settings\Bioanalyzer\2013-12-16\2013-12-16\_002.xad

Created: 12/16/2013 1:18:16 PM  
 Modified: 12/16/2013 2:16:56 PM

**Electropherogram Summary**



**Overall Results for Ladder**

Noise: 0.2

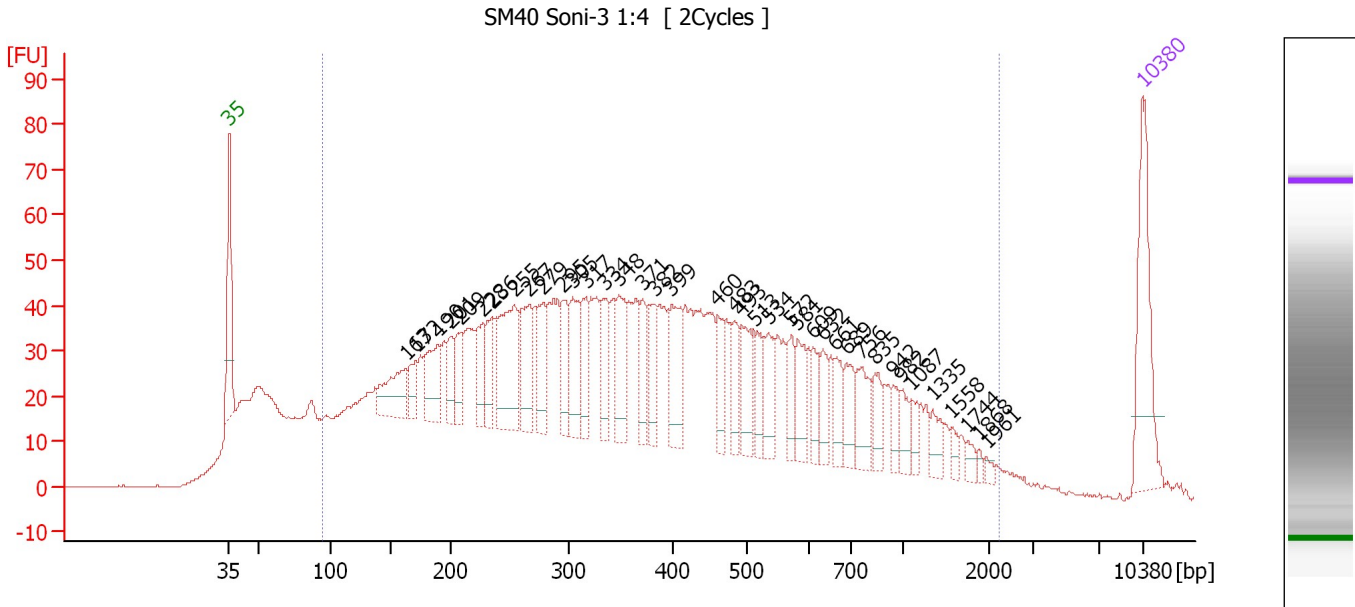
**Peak table for Ladder**

Peak	Aligned Migration Time [s]	Size [bp]	Conc. [pg/μl]	Molarity [pmol/l]	Observations
1	43.00	35	125.00	5,411.3	Lower Marker
2	45.29	50	150.00	4,545.5	Ladder Peak
3	50.74	100	150.00	2,272.7	Ladder Peak
4	55.33	150	150.00	1,515.2	Ladder Peak
5	59.92	200	150.00	1,136.4	Ladder Peak
6	68.97	300	150.00	757.6	Ladder Peak
7	77.00	400	150.00	568.2	Ladder Peak
8	82.69	500	150.00	454.5	Ladder Peak
9	87.44	600	150.00	378.8	Ladder Peak
10	90.68	700	150.00	324.7	Ladder Peak
11	94.69	1,000	150.00	227.3	Ladder Peak
12	101.29	2,000	150.00	113.6	Ladder Peak
13	104.56	3,000	150.00	75.8	Ladder Peak
14	109.68	7,000	150.00	32.5	Ladder Peak
15	113.00	10,380	75.00	10.9	Upper Marker

Assay Class: High Sensitivity DNA Assay  
 Data Path: C:\...ents and Settings\Bioanalyzer\2013-12-16\2013-12-16\_002.xad

Created: 12/16/2013 1:18:16 PM  
 Modified: 12/16/2013 2:16:56 PM

**Electropherogram Summary Continued ...**



**Overall Results for sample 1 : SM40 Soni-3 1:4**

Number of peaks found: 39                      Corr. Area 1: 2,334.3  
 Noise: 0.2

**Peak table for sample 1 : SM40 Soni-3 1:4**


Peak	Aligned Migration Time [s]	Size [bp]	Conc. [pg/µl]	Molarity [pmol/l]	Observations
1	43.00	35	125.00	5,411.3	Lower Marker
2	56.53	163	64.98	603.9	
3	57.30	172	25.47	225.0	
4	58.98	190	61.68	492.4	
5	60.00	201	28.82	217.3	
6	60.78	209	34.36	248.5	
7	62.45	228	38.76	257.5	
8	63.15	236	40.45	260.1	
9	64.86	255	114.05	678.6	
10	66.01	267	64.85	367.6	
11	67.07	279	46.22	251.0	
12	68.50	295	43.76	224.9	
13	69.36	305	54.24	269.6	
14	70.34	317	39.99	191.1	
15	71.73	334	39.02	176.8	
16	72.83	348	53.93	234.7	
17	74.67	371	36.22	147.9	
18	75.57	382	30.34	120.3	
19	76.92	399	60.32	229.0	
20	80.43	460	36.64	120.6	
21	81.70	483	29.35	92.2	
22	82.27	493	46.77	143.8	
23	83.29	513	30.07	88.9	
24	84.31	534	37.51	106.4	
25	86.11	572	25.30	67.0	

Assay Class: High Sensitivity DNA Assay  
 Data Path: C:\...ents and Settings\Bioanalyzer\2013-12-16\2013-12-16\_002.xad


Created: 12/16/2013 1:18:16 PM  
 Modified: 12/16/2013 2:16:56 PM

**Electropherogram Summary Continued ...**

**... Peak table for sample 1 : SM40 Soni-3 1:4**

Peak	Aligned Migration Time [s]	Size [bp]	Conc. [pg/μl]	Molarity [pmol/l]	Observations
26	86.56	581	33.48	87.2	
27	87.75	609	21.36	53.1	
28	88.48	632	23.79	57.0	
29	89.42	661	23.93	54.8	
30	90.32	689	26.94	59.2	
31	91.42	756	35.32	70.8	
32	92.49	835	20.68	37.5	
33	93.92	942	15.85	25.5	
34	94.45	982	15.97	24.7	
35	95.27	1,087	11.50	16.0	
36	96.90	1,335	15.40	17.5	
37	98.37	1,558	6.85	6.7	
38	99.60	1,744	6.96	6.0	
39	100.41	1,868	3.44	2.8	
40	101.03	1,961	3.95	3.1	
41	 113.00	10,380	75.00	10.9	Upper Marker

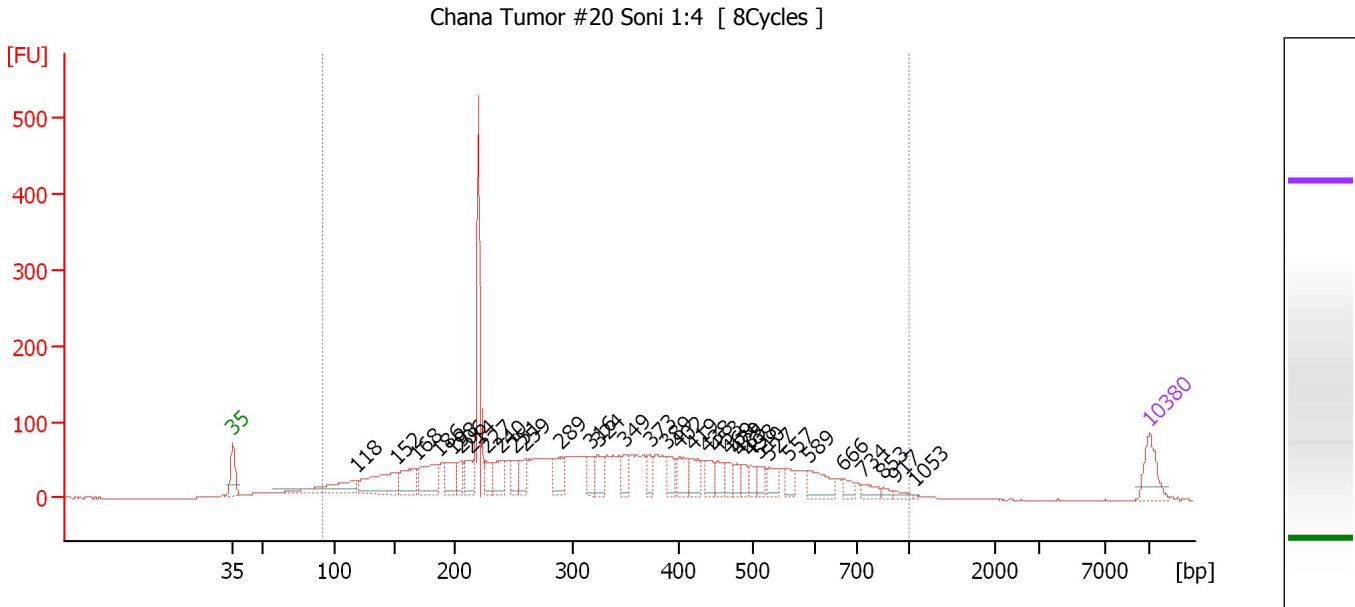
**Region table for sample 1 : SM40 Soni-3 1:4**

From [bp]	To [bp]	Average Size [bp]	Molarity [pmol/l]	Conc. [pg/μl]	Corr. Area	% of Total	Size distribution in CV [%]	Color
95	2,236	452	18,863.6	3,309.41	2,334.3	88	72.3	

Assay Class: High Sensitivity DNA Assay  
 Data Path: C:\...ents and Settings\Bioanalyzer\2013-12-16\2013-12-16\_002.xad

Created: 12/16/2013 1:18:16 PM  
 Modified: 12/16/2013 2:16:56 PM

**Electropherogram Summary Continued ...**



**Overall Results for sample 2 : Chana Tumor #20 Soni 1:4**

Number of peaks found: 34                      Corr. Area 1: 2,929.6  
 Noise: 0.2

**Peak table for sample 2 : Chana Tumor #20 Soni 1:4**

Peak	Aligned Migration Time [s]	Size [bp]	Conc. [pg/μl]	Molarity [pmol/l]	Observations
1	43.00	35	125.00	5,411.3	Lower Marker
2	52.41	118	178.25	2,285.9	
3	55.50	152	230.31	2,297.5	
4	56.97	168	136.98	1,236.4	
5	58.64	186	165.55	1,348.2	
6	59.78	198	88.52	675.7	
7	60.43	206	61.23	451.1	
8	61.16	214	104.96	744.0	
9	62.34	227	62.05	414.5	
10	63.52	240	87.59	553.3	
11	64.54	251	70.81	427.3	
12	65.27	259	65.97	385.6	
13	68.00	289	99.71	522.2	
14	70.28	316	59.71	286.0	
15	70.89	324	76.26	356.6	
16	72.93	349	52.99	229.8	
17	74.84	373	50.24	204.0	
18	76.11	389	61.01	237.7	
19	77.12	402	85.57	322.3	
20	78.10	419	71.70	259.0	
21	79.16	438	61.26	211.9	
22	80.02	453	50.25	168.1	
23	80.95	469	48.23	155.6	
24	81.48	479	35.80	113.3	
25	81.81	485	40.43	126.4	

Assay Class: High Sensitivity DNA Assay  
 Data Path: C:\...ents and Settings\Bioanalyzer\2013-12-16\2013-12-16\_002.xad

Created: 12/16/2013 1:18:16 PM  
 Modified: 12/16/2013 2:16:56 PM

**Electropherogram Summary Continued ...**

**... Peak table for sample 2 : Chana Tumor #20 Soni 1:4**

Peak	Aligned Migration Time [s]	Size [bp]	Conc. [pg/μl]	Molarity [pmol/l]	Observations
26	82.58	498	36.14	109.9	
27	83.15	510	36.78	109.3	
28	83.97	527	50.67	145.7	
29	85.39	557	37.51	102.1	
30	86.94	589	90.31	232.1	
31	89.59	666	29.64	67.4	
32	91.13	734	32.69	67.5	
33	92.72	853	12.86	22.8	
34	93.58	917	13.86	22.9	
35	95.04	1,053	3.01	4.3	
36	113.00	10,380	75.00	10.9	Upper Marker

**Region table for sample 2 : Chana Tumor #20 Soni 1:4**

From [bp]	To [bp]	Average Size [bp]	Molarity [pmol/l]	Conc. [pg/μl]	Corr. Area	% of Total	Size distribution in CV [%]	Color
92	1,000	348	24,791.7	4,049.95	2,929.6	95	46.3	

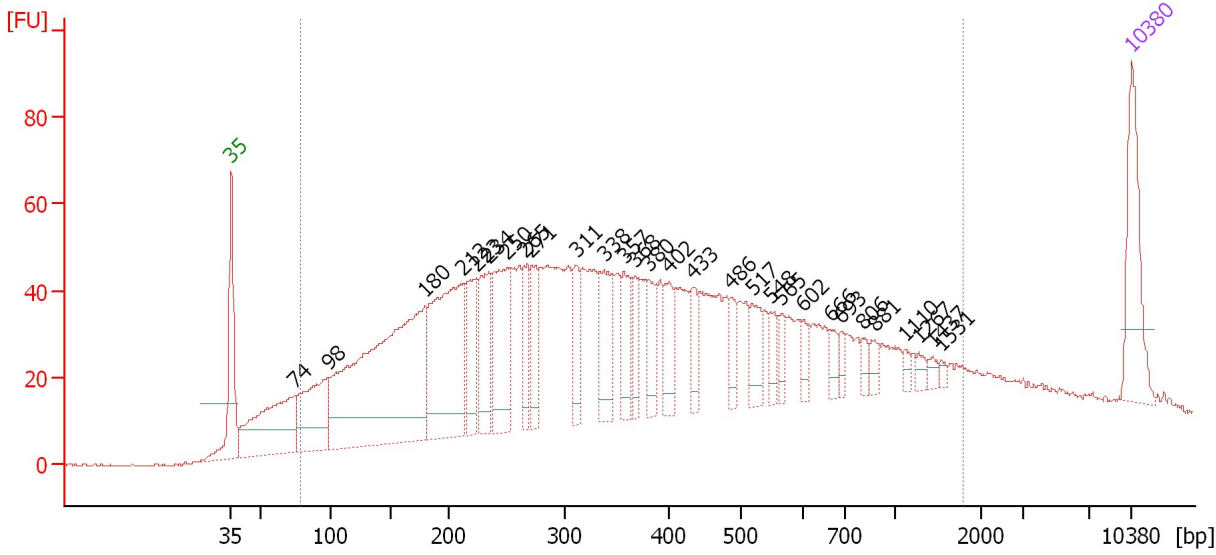


Assay Class: High Sensitivity DNA Assay  
 Data Path: C:\...ents and Settings\Bioanalyzer\2013-12-16\2013-12-16\_002.xad

Created: 12/16/2013 1:18:16 PM  
 Modified: 12/16/2013 2:16:56 PM

**Electropherogram Summary Continued ...**

Pooled Tumor #21 Soni 1:3 [ 8Cycles ]



**Overall Results for sample 3 : Pooled Tumor #21 Soni 1:3**

Number of peaks found: 29                      Corr. Area 1: 2,228.6  
 Noise: 0.3

**Peak table for sample 3 : Pooled Tumor #21 Soni 1:3**

Peak	Aligned Migration Time [s]	Size [bp]	Conc. [pg/μl]	Molarity [pmol/l]	Observations
1	43.00	35	125.00	5,411.3	Lower Marker
2	47.93	74	204.88	4,181.2	
3	50.51	98	152.07	2,355.0	
4	58.09	180	567.62	4,774.1	
5	61.04	212	277.28	1,978.0	
6	62.03	223	88.01	596.9	
7	63.03	234	91.88	594.0	
8	64.44	250	143.22	868.1	
9	65.81	265	51.57	294.8	
10	66.35	271	62.32	348.4	
11	69.83	311	51.12	249.3	
12	71.99	338	81.77	367.0	
13	73.56	357	56.04	237.7	
14	74.39	368	34.81	143.5	
15	75.43	380	44.72	178.1	
16	77.09	402	43.74	165.0	
17	78.87	433	36.04	126.1	
18	81.90	486	23.46	73.1	
19	83.52	517	38.03	111.4	
20	84.97	548	22.21	61.4	
21	85.75	565	18.38	49.3	
22	87.50	602	14.45	36.4	
23	89.57	666	15.26	34.7	
24	90.44	693	12.01	26.3	
25	92.10	806	11.11	20.9	

Assay Class: High Sensitivity DNA Assay  
 Data Path: C:\...ents and Settings\Bioanalyzer\2013-12-16\2013-12-16\_002.xad


Created: 12/16/2013 1:18:16 PM  
 Modified: 12/16/2013 2:16:56 PM

### Electropherogram Summary Continued ...

#### ... Peak table for sample 3 : Pooled Tumor #21 Soni 1:3

Peak	Aligned Migration Time [s]	Size [bp]	Conc. [pg/μl]	Molarity [pmol/l]	Observations
26	93.09	881	12.78	22.0	
27	95.42	1,110	6.57	9.0	
28	96.45	1,267	7.33	8.8	
29	97.57	1,437	7.34	7.7	
30	98.20	1,531	4.48	4.4	
31	113.00	10,380	75.00	10.9	Upper Marker

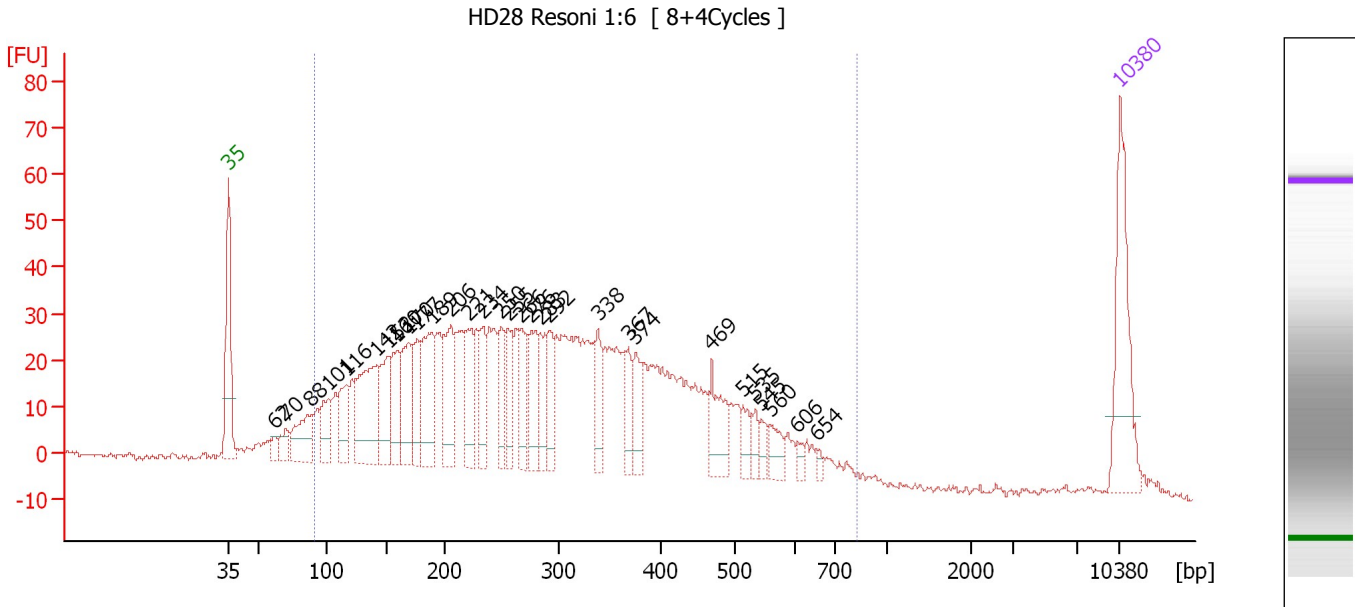
#### Region table for sample 3 : Pooled Tumor #21 Soni 1:3

From [bp]	To [bp]	Average Size [bp]	Molarity [pmol/l]	Conc. [pg/μl]	Corr. Area	% of Total	Size distribution in CV [%]	Color
78	1,797	413	22,100.2	3,443.20	2,228.6	91	71.7	

Assay Class: High Sensitivity DNA Assay  
 Data Path: C:\...ents and Settings\Bioanalyzer\2013-12-16\2013-12-16\_002.xad

Created: 12/16/2013 1:18:16 PM  
 Modified: 12/16/2013 2:16:56 PM

**Electropherogram Summary Continued ...**



**Overall Results for sample 4 : HD28 Resoni 1:6**

Number of peaks found: 30                      Corr. Area 1: 1,441.1  
 Noise: 0.5

**Peak table for sample 4 : HD28 Resoni 1:6**


Peak	Aligned Migration Time [s]	Size [bp]	Conc. [pg/μl]	Molarity [pmol/l]	Observations
1	43.00	35	125.00	5,411.3	Lower Marker
2	46.60	62	10.87	265.8	
3	47.52	70	20.34	437.6	
4	49.45	88	59.37	1,020.8	
5	50.83	101	43.30	649.9	
6	52.21	116	48.78	637.0	
7	54.64	142	123.15	1,309.6	
8	55.52	152	60.98	607.7	
9	56.23	160	57.67	546.8	
10	57.15	170	68.79	613.7	
11	57.82	177	53.20	455.0	
12	58.95	189	83.93	671.2	
13	60.46	206	69.79	513.4	
14	61.80	221	58.00	398.0	
15	62.97	234	44.24	286.8	
16	64.44	250	39.31	238.3	
17	64.94	255	41.54	246.3	
18	65.86	266	40.54	231.2	
19	66.78	276	53.25	292.5	
20	67.45	283	38.09	203.8	
21	68.20	292	37.59	195.3	
22	72.01	338	32.71	146.6	
23	74.36	367	25.53	105.4	
24	74.94	374	33.51	135.6	
25	80.93	469	44.25	142.9	

Assay Class: High Sensitivity DNA Assay  
 Data Path: C:\...ents and Settings\Bioanalyzer\2013-12-16\2013-12-16\_002.xad


Created: 12/16/2013 1:18:16 PM  
 Modified: 12/16/2013 2:16:56 PM

### Electropherogram Summary Continued ...

#### ... Peak table for sample 4 : HD28 Resoni 1:6

Peak	Aligned Migration Time [s]	Size [bp]	Conc. [pg/ $\mu$ l]	Molarity [pmol/l]	Observations
26	83.40	515	15.71	46.2	
27	84.36	535	11.77	33.3	
28	84.82	545	11.78	32.8	
29	85.54	560	19.47	52.7	
30	87.63	606	6.76	16.9	
31	89.18	654	4.86	11.3	
32	 113.00	10,380	75.00	10.9	Upper Marker

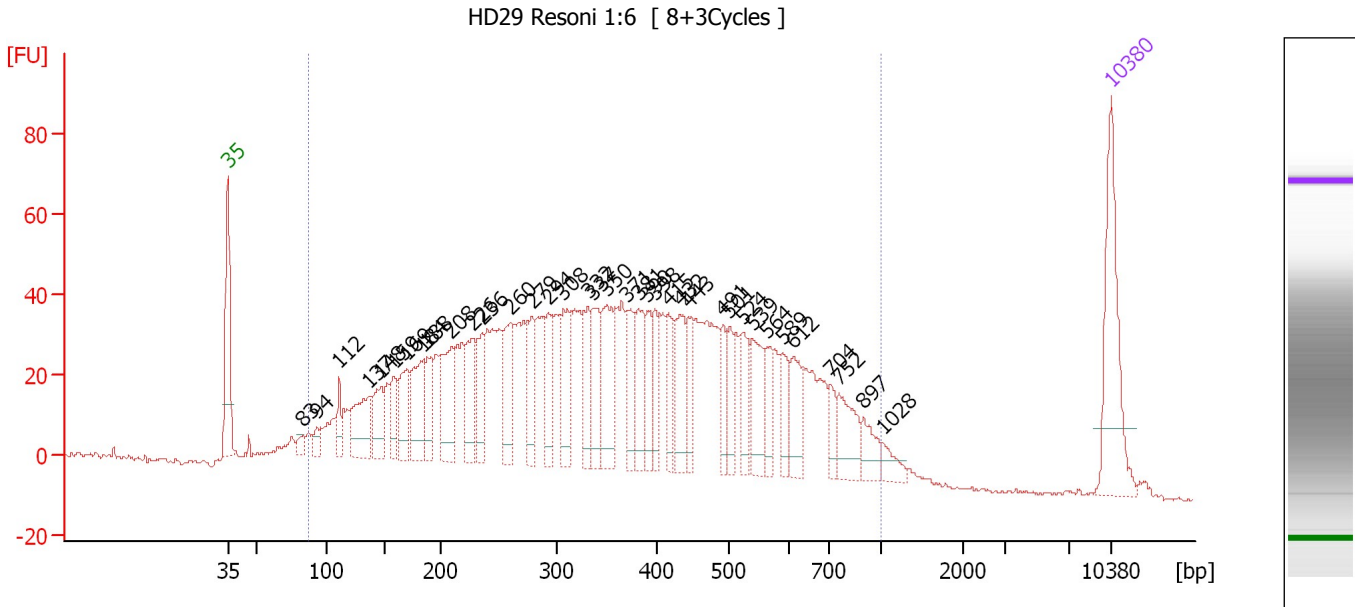
#### Region table for sample 4 : HD28 Resoni 1:6

From [bp]	To [bp]	Average Size [bp]	Molarity [pmol/l]	Conc. [pg/ $\mu$ l]	Corr. Area	% of Total	Size distribution in CV [%]	Color
91	819	307	14,232.0	2,097.38	1,441.1	93	44.2	

Assay Class: High Sensitivity DNA Assay  
 Data Path: C:\...ents and Settings\Bioanalyzer\2013-12-16\2013-12-16\_002.xad

Created: 12/16/2013 1:18:16 PM  
 Modified: 12/16/2013 2:16:56 PM

**Electropherogram Summary Continued ...**



**Overall Results for sample 5 : HD29 Resoni 1:6**

Number of peaks found: 37                      Corr. Area 1: 2,048.3  
 Noise: 0.6

**Peak table for sample 5 : HD29 Resoni 1:6**


Peak	Aligned Migration Time [s]	Size [bp]	Conc. [pg/μl]	Molarity [pmol/l]	Observations
1	43.00	35	125.00	5,411.3	Lower Marker
2	48.87	83	11.33	207.3	
3	50.05	94	12.30	198.8	
4	51.83	112	24.40	330.5	
5	54.11	137	64.03	709.6	
6	55.12	148	43.86	449.8	
7	56.14	159	29.66	283.0	
8	57.11	169	47.65	426.2	
9	58.46	184	61.69	507.6	
10	58.80	188	44.50	359.0	
11	60.66	208	74.49	542.1	
12	62.31	226	53.13	355.6	
13	63.19	236	42.69	273.8	
14	65.35	260	55.29	322.2	
15	67.08	279	41.09	223.1	
16	68.39	294	38.09	196.6	
17	69.57	308	55.16	271.8	
18	71.52	332	44.48	203.1	
19	71.94	337	49.84	224.1	
20	72.99	350	65.08	281.6	
21	74.64	371	43.56	178.0	
22	75.49	381	44.91	178.5	
23	76.16	390	31.74	123.4	
24	76.84	398	31.12	118.5	
25	77.85	415	32.42	118.4	

Assay Class: High Sensitivity DNA Assay  
 Data Path: C:\...ents and Settings\Bioanalyzer\2013-12-16\2013-12-16\_002.xad


Created: 12/16/2013 1:18:16 PM  
 Modified: 12/16/2013 2:16:56 PM

**Electropherogram Summary Continued ...**

**... Peak table for sample 5 : HD29 Resoni 1:6**

Peak	Aligned Migration Time [s]	Size [bp]	Conc. [pg/μl]	Molarity [pmol/l]	Observations
26	78.82	432	47.67	167.2	
27	79.46	443	31.39	107.3	
28	82.20	491	26.55	81.9	
29	82.75	501	26.01	78.6	
30	83.81	524	33.62	97.3	
31	84.53	539	46.63	131.2	
32	85.75	564	25.81	69.3	
33	86.93	589	26.37	67.8	
34	87.82	612	33.35	82.6	
35	90.74	704	16.23	34.9	
36	91.37	752	37.87	76.3	
37	93.31	897	19.89	33.6	
38	94.88	1,028	13.06	19.2	
39	 113.00	10,380	75.00	10.9	Upper Marker

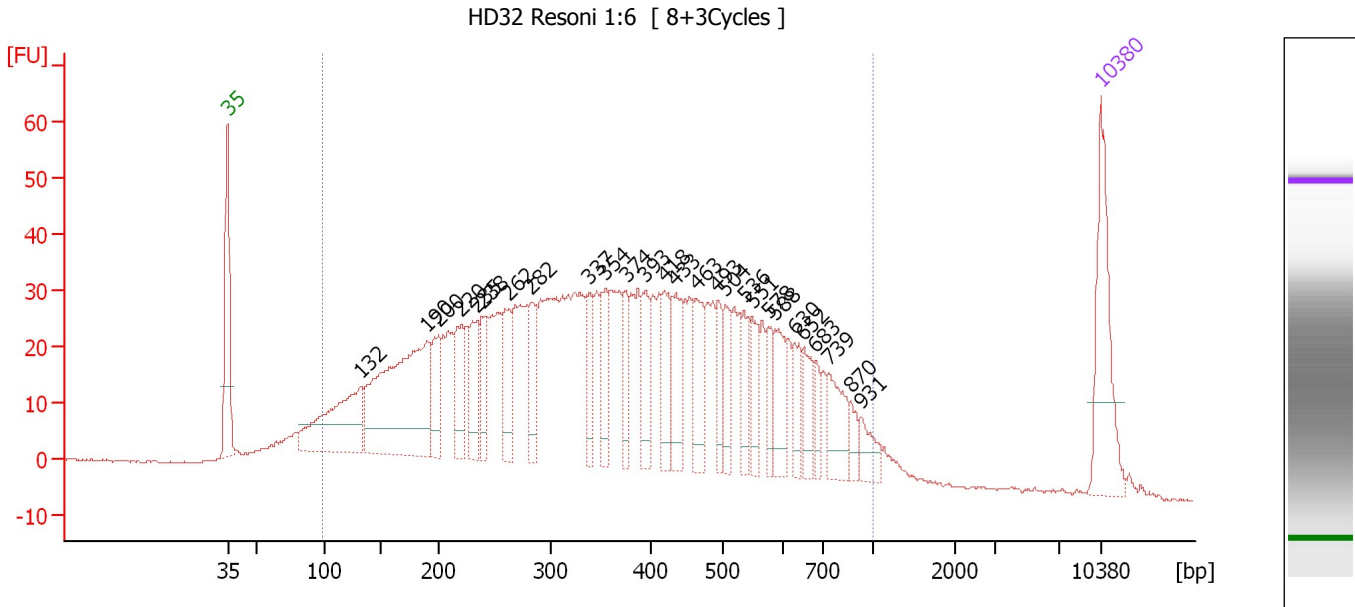
**Region table for sample 5 : HD29 Resoni 1:6**

From [bp]	To [bp]	Average Size [bp]	Molarity [pmol/l]	Conc. [pg/μl]	Corr. Area	% of Total	Size distribution in CV [%]	Color
87	1,000	383	13,924.1	2,425.29	2,048.3	95	46.4	

Assay Class: High Sensitivity DNA Assay  
 Data Path: C:\...ents and Settings\Bioanalyzer\2013-12-16\2013-12-16\_002.xad

Created: 12/16/2013 1:18:16 PM  
 Modified: 12/16/2013 2:16:56 PM

**Electropherogram Summary Continued ...**



**Overall Results for sample 6 : HD32 Resoni 1:6**

Number of peaks found: 27                      Corr. Area 1: 1,641.1  
 Noise: 0.2

**Peak table for sample 6 : HD32 Resoni 1:6**

Peak	Aligned Migration Time [s]	Size [bp]	Conc. [pg/μl]	Molarity [pmol/l]	Observations
1	43.00	35	125.00	5,411.3	Lower Marker
2	53.68	132	153.81	1,764.6	
3	59.03	190	283.00	2,253.3	
4	59.92	200	51.20	387.7	
5	61.76	220	53.34	366.7	
6	63.04	235	53.87	348.0	
7	63.38	238	40.03	254.5	
8	65.56	262	55.22	318.9	
9	67.32	282	43.22	232.4	
10	71.93	337	40.78	183.4	
11	73.30	354	42.80	183.2	
12	74.92	374	35.27	142.8	
13	76.46	393	41.77	160.9	
14	78.00	418	48.31	175.3	
15	78.90	433	49.52	173.1	
16	80.61	463	54.63	178.6	
17	82.27	493	29.97	92.2	
18	82.87	504	33.48	100.7	
19	84.41	536	30.57	86.4	
20	85.09	551	34.65	95.3	
21	86.38	578	24.81	65.1	
22	86.89	588	40.79	105.0	
23	88.43	630	24.63	59.2	
24	89.11	652	30.20	70.2	
25	90.14	683	18.64	41.3	

Assay Class: High Sensitivity DNA Assay  
 Data Path: C:\...ents and Settings\Bioanalyzer\2013-12-16\2013-12-16\_002.xad


Created: 12/16/2013 1:18:16 PM  
 Modified: 12/16/2013 2:16:56 PM

### Electropherogram Summary Continued ...

#### ... Peak table for sample 6 : HD32 Resoni 1:6

Peak	Aligned Migration Time [s]	Size [bp]	Conc. [pg/ $\mu$ l]	Molarity [pmol/l]	Observations
26	91.21	739	43.72	89.6	
27	92.96	870	13.56	23.6	
28	93.77	931	20.68	33.7	
29	113.00	10,380	75.00	10.9	Upper Marker

#### Region table for sample 6 : HD32 Resoni 1:6

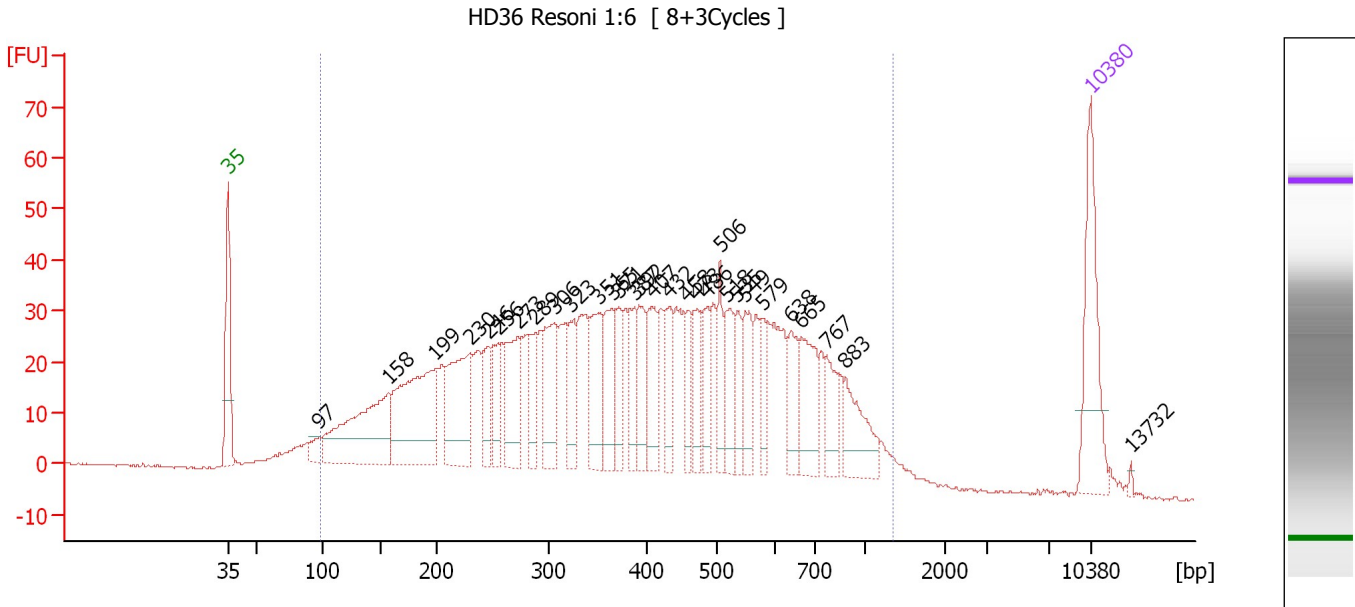
From [bp]	To [bp]	Average Size [bp]	Molarity [pmol/l]	Conc. [pg/ $\mu$ l]	Corr. Area	% of Total	Size distribution in CV [%]	Color
99	1,000	388	14,612.5	2,611.43	1,641.1	94	46.1	



Assay Class: High Sensitivity DNA Assay  
 Data Path: C:\...ents and Settings\Bioanalyzer\2013-12-16\2013-12-16\_002.xad

Created: 12/16/2013 1:18:16 PM  
 Modified: 12/16/2013 2:16:56 PM

**Electropherogram Summary Continued ...**



**Overall Results for sample 7 : HD36 Resoni 1:6**

Number of peaks found: 30                      Corr. Area 1: 1,649.6  
 Noise: 0.2

**Peak table for sample 7 : HD36 Resoni 1:6**

Peak	Aligned Migration Time [s]	Size [bp]	Conc. [pg/μl]	Molarity [pmol/l]	Observations
1	43.00	35	125.00	5,411.3	Lower Marker
2	50.40	97	18.69	292.2	
3	56.03	158	174.23	1,674.5	
4	59.84	199	184.82	1,406.0	
5	62.65	230	117.96	776.3	
6	64.13	246	39.43	242.4	
7	64.99	256	47.97	283.8	
8	66.55	273	82.03	454.8	
9	67.94	289	35.01	183.8	
10	69.45	306	73.95	366.2	
11	70.84	323	43.35	203.2	
12	73.04	351	67.00	289.4	
13	74.17	365	55.99	232.6	
14	74.69	371	34.70	141.6	
15	75.94	387	33.54	131.4	
16	76.33	392	43.53	168.4	
17	77.42	407	52.19	194.1	
18	78.84	432	34.43	120.6	
19	80.32	458	33.12	109.5	
20	81.14	473	40.21	128.9	
21	81.92	486	35.49	110.5	
22	82.96	506	35.49	106.4	
23	83.56	518	44.97	131.4	
24	84.34	535	30.19	85.5	
25	85.03	549	42.04	116.0	

Assay Class: High Sensitivity DNA Assay  
 Data Path: C:\...ents and Settings\Bioanalyzer\2013-12-16\2013-12-16\_002.xad


Created: 12/16/2013 1:18:16 PM  
 Modified: 12/16/2013 2:16:56 PM

### Electropherogram Summary Continued ...

#### ... Peak table for sample 7 : HD36 Resoni 1:6

Peak	Aligned Migration Time [s]	Size [bp]	Conc. [pg/μl]	Molarity [pmol/l]	Observations
26	86.42	579	25.55	66.9	
27	88.67	638	36.16	85.9	
28	89.54	665	58.59	133.5	
29	91.57	767	33.07	65.3	
30	93.13	883	48.36	83.0	
31	113.00	10,380	75.00	10.9	Upper Marker
32	116.29	13,732	0.00	0.0	

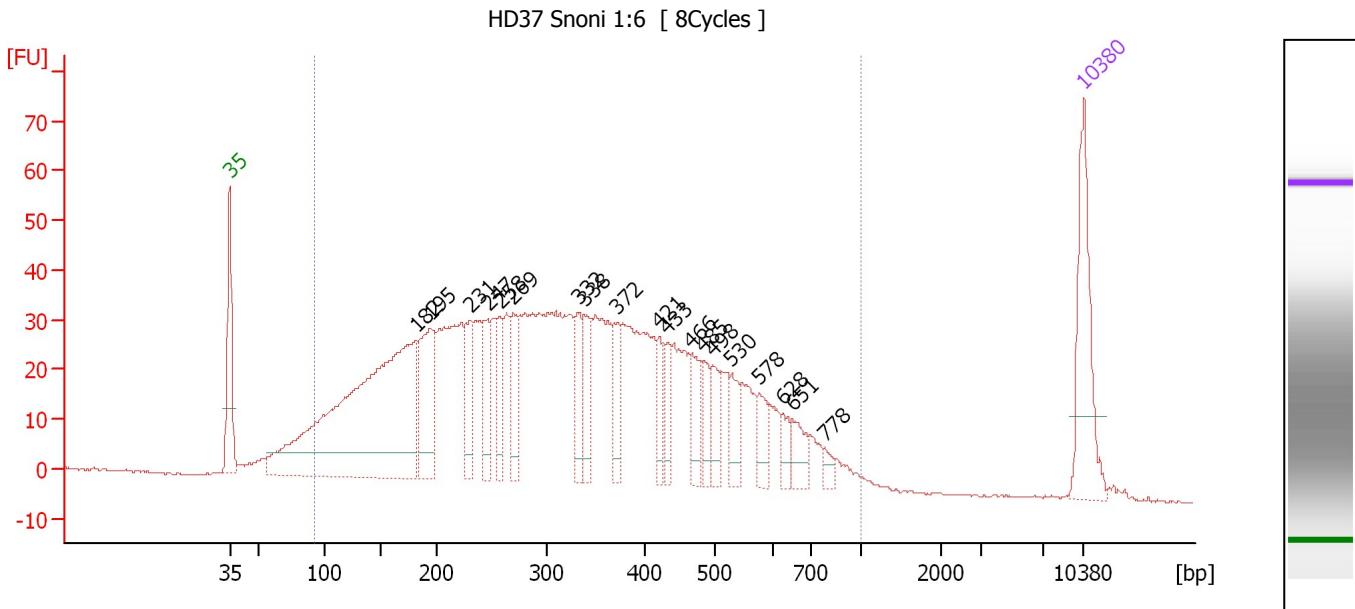
#### Region table for sample 7 : HD36 Resoni 1:6

From [bp]	To [bp]	Average Size [bp]	Molarity [pmol/l]	Conc. [pg/μl]	Corr. Area	% of Total	Size distribution in CV [%]	Color
98	1,359	428	12,780.3	2,446.54	1,649.6	96	49.7	

Assay Class: High Sensitivity DNA Assay  
 Data Path: C:\...ents and Settings\Bioanalyzer\2013-12-16\2013-12-16\_002.xad

Created: 12/16/2013 1:18:16 PM  
 Modified: 12/16/2013 2:16:56 PM

**Electropherogram Summary Continued ...**



**Overall Results for sample 8 : HD37 Snoni 1:6**

Number of peaks found: 19                      Corr. Area 1: 1,633.9  
 Noise: 0.2

**Peak table for sample 8 : HD37 Snoni 1:6**

Peak	Aligned Migration Time [s]	Size [bp]	Conc. [pg/μl]	Molarity [pmol/l]	Observations
1	43.00	35	125.00	5,411.3	Lower Marker
2	58.25	182	548.35	4,569.2	
3	59.43	195	117.65	915.6	
4	62.75	231	52.54	344.1	
5	64.19	247	54.59	334.6	
6	65.15	258	47.47	278.9	
7	66.20	269	56.96	320.3	
8	71.58	322	43.69	199.1	
9	72.06	338	48.49	217.0	
10	74.77	372	35.43	144.2	
11	78.17	421	27.53	99.1	
12	78.87	433	26.70	93.4	
13	80.75	466	39.79	129.4	
14	81.85	485	25.61	80.0	
15	82.59	498	29.39	89.4	
16	84.12	530	26.97	77.1	
17	86.39	578	23.09	60.5	
18	88.36	628	14.38	34.7	
19	89.10	651	24.28	56.5	
20	91.72	778	9.06	17.6	
21	113.00	10,380	75.00	10.9	Upper Marker

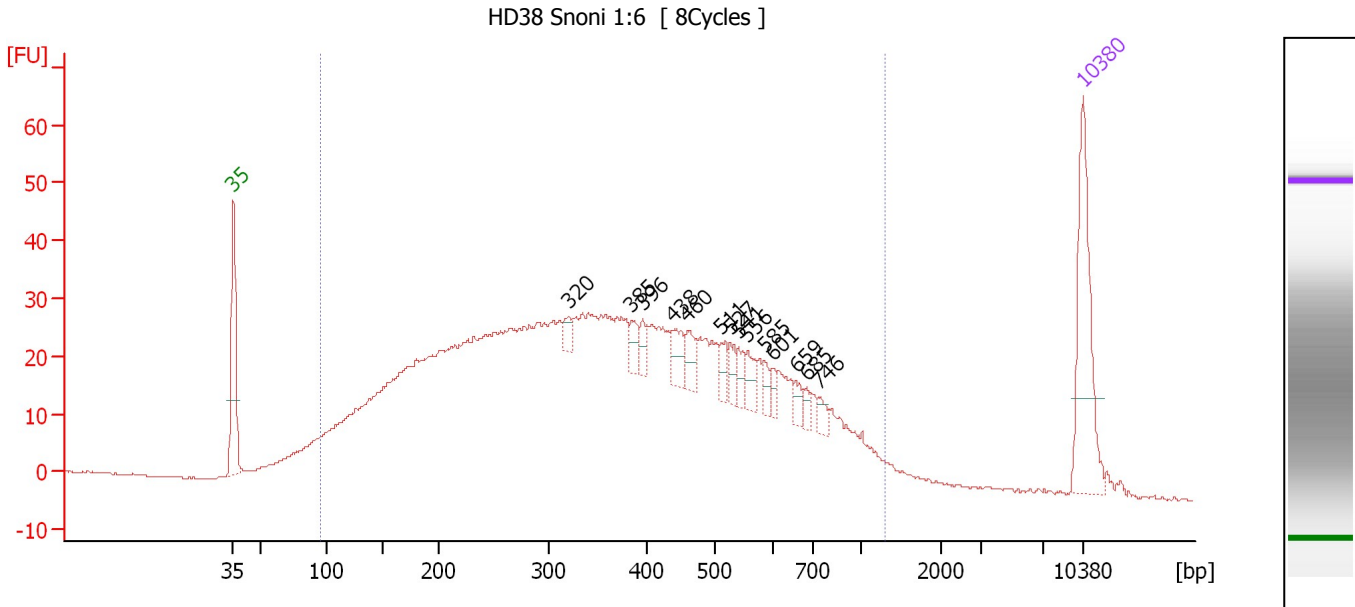
**Region table for sample 8 : HD37 Snoni 1:6**

From [bp]	To [bp]	Average Size [bp]	Molarity [pmol/l]	Conc. [pg/μl]	Corr. Area	% of Total	Size distribution in CV [%]	Color
93	1,000	342	14,945.8	2,392.32	1,633.9	95	46.2	Blue

Assay Class: High Sensitivity DNA Assay  
 Data Path: C:\...ents and Settings\Bioanalyzer\2013-12-16\2013-12-16\_002.xad

Created: 12/16/2013 1:18:16 PM  
 Modified: 12/16/2013 2:16:56 PM

**Electropherogram Summary Continued ...**



**Overall Results for sample 9 : HD38 Snoni 1:6**

Number of peaks found: 14                      Corr. Area 1: 1,419.2  
 Noise: 0.2

**Peak table for sample 9 : HD38 Snoni 1:6**

Peak	Aligned Migration Time [s]	Size [bp]	Conc. [pg/μl]	Molarity [pmol/l]	Observations
1	43.00	35	125.00	5,411.3	Lower Marker
2	70.60	320	9.76	46.2	
3	75.78	385	13.82	54.4	
4	76.70	396	10.03	38.3	
5	79.16	438	20.61	71.3	
6	80.44	460	18.27	60.1	
7	83.21	511	11.65	34.6	
8	83.95	527	12.09	34.8	
9	84.66	541	10.11	28.3	
10	85.36	556	12.90	35.1	
11	86.72	585	7.86	20.4	
12	87.47	601	7.48	18.9	
13	89.36	659	8.33	19.1	
14	90.19	685	5.95	13.2	
15	91.29	746	7.65	15.5	
16	113.00	10,380	75.00	10.9	Upper Marker

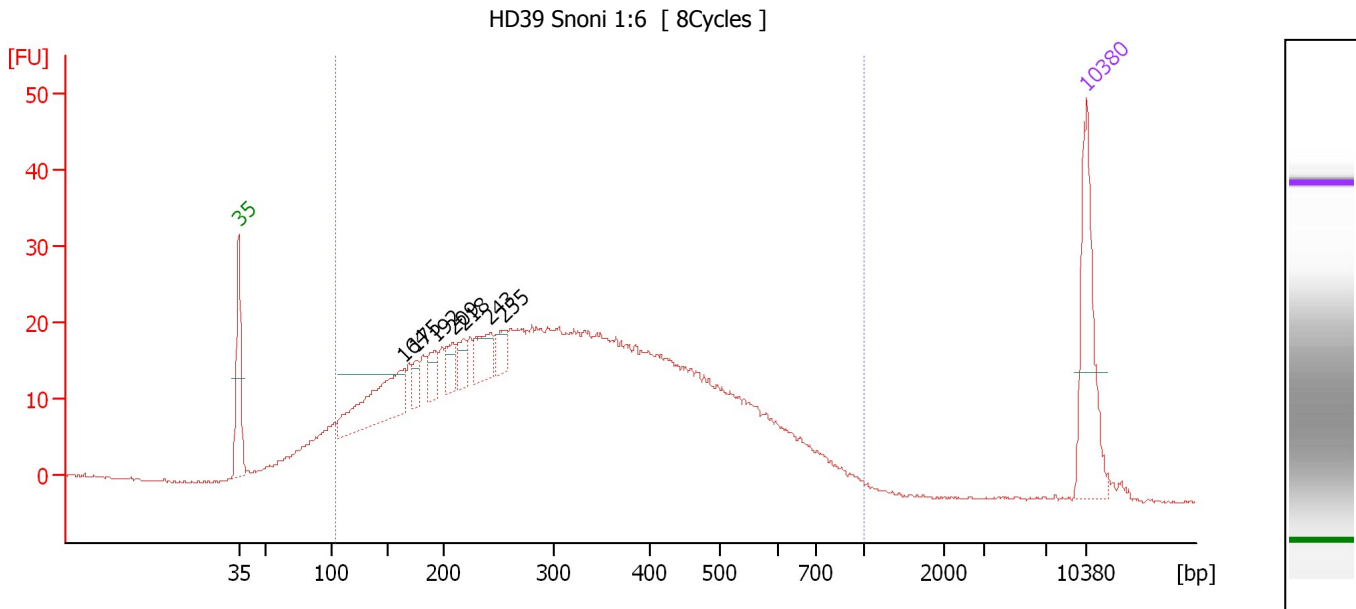
**Region table for sample 9 : HD38 Snoni 1:6**

From [bp]	To [bp]	Average Size [bp]	Molarity [pmol/l]	Conc. [pg/μl]	Corr. Area	% of Total	Size distribution in CV [%]	Color
95	1,310	391	13,361.3	2,341.37	1,419.2	95	51.2	Blue

Assay Class: High Sensitivity DNA Assay  
 Data Path: C:\...ents and Settings\Bioanalyzer\2013-12-16\2013-12-16\_002.xad

Created: 12/16/2013 1:18:16 PM  
 Modified: 12/16/2013 2:16:56 PM

**Electropherogram Summary Continued ...**



**Overall Results for sample 10 : HD39 Snoni 1:6**

Number of peaks found: 7                      Corr. Area 1: 926.0  
 Noise: 0.2

**Peak table for sample 10 : HD39 Snoni 1:6**

Peak	Aligned Migration Time [s]	Size [bp]	Conc. [pg/μl]	Molarity [pmol/l]	Observations
1	43.00	35	125.00	5,411.3	Lower Marker
2	56.65	164	110.51	1,018.6	
3	57.66	175	15.57	134.4	
4	59.20	192	23.75	187.2	
5	60.70	209	20.44	148.5	
6	61.58	218	20.63	143.1	
7	63.78	243	35.43	221.2	
8	64.92	255	19.67	116.7	
9	113.00	10,380	75.00	10.9	Upper Marker

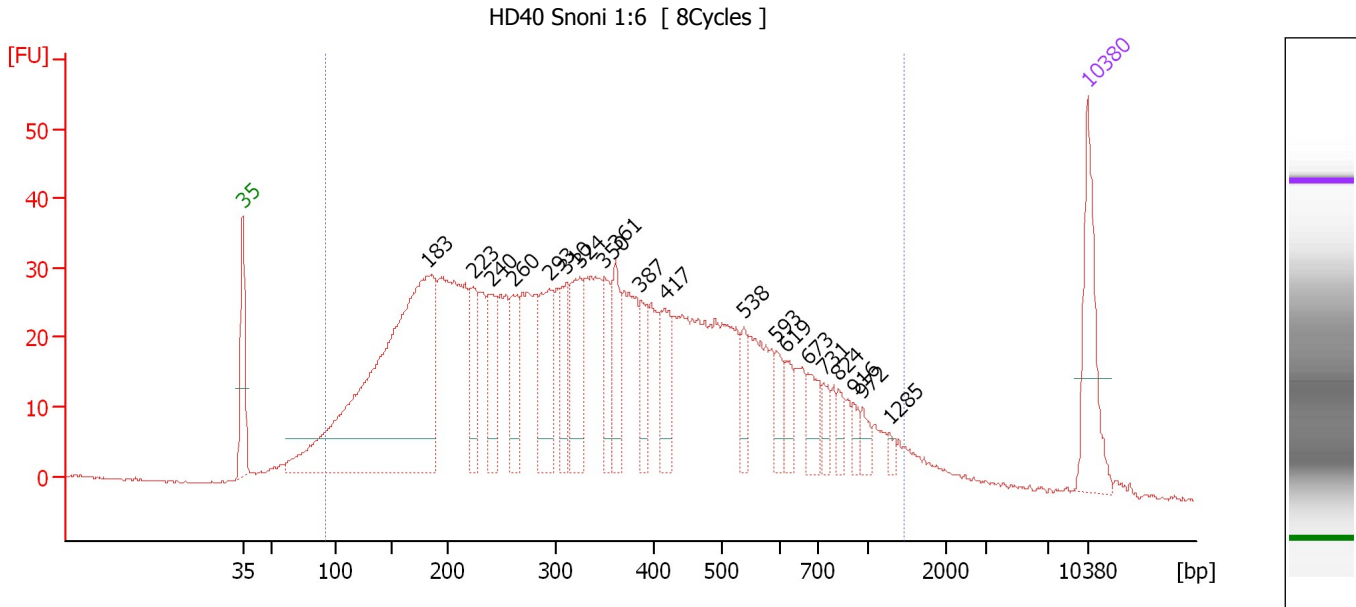
**Region table for sample 10 : HD39 Snoni 1:6**

From [bp]	To [bp]	Average Size [bp]	Molarity [pmol/l]	Conc. [pg/μl]	Corr. Area	% of Total	Size distribution in CV [%]	Color
102	1,000	337	12,857.4	2,089.62	926.0	94	45.0	Blue

Assay Class: High Sensitivity DNA Assay  
 Data Path: C:\...ents and Settings\Bioanalyzer\2013-12-16\2013-12-16\_002.xad

Created: 12/16/2013 1:18:16 PM  
 Modified: 12/16/2013 2:16:56 PM

**Electropherogram Summary Continued ...**



**Overall Results for sample 11 : HD40 Snoni 1:6**

Number of peaks found: 20                      Corr. Area 1: 1,508.4  
 Noise: 0.2

**Peak table for sample 11 : HD40 Snoni 1:6**

Peak	Aligned Migration Time [s]	Size [bp]	Conc. [pg/μl]	Molarity [pmol/l]	Observations
1	43.00	35	125.00	5,411.3	Lower Marker
2	58.32	183	720.05	5,972.9	
3	62.03	223	62.08	421.1	
4	63.54	240	78.32	494.5	
5	65.35	260	70.08	408.4	
6	68.35	293	99.41	513.8	
7	69.81	310	62.19	303.5	
8	70.87	324	87.66	410.4	
9	72.94	350	55.00	238.4	
10	73.87	361	57.78	242.4	
11	75.95	387	44.52	174.3	
12	77.98	417	58.27	211.6	
13	84.51	538	27.62	77.7	
14	87.12	593	25.80	65.9	
15	88.05	619	23.80	58.3	
16	89.81	673	33.20	74.7	
17	91.09	731	17.68	36.6	
18	92.33	824	14.29	26.3	
19	93.57	916	11.40	18.9	
20	94.32	972	12.91	20.1	
21	96.57	1,285	5.95	7.0	
22	113.00	10,380	75.00	10.9	Upper Marker

Assay Class: High Sensitivity DNA Assay  
Data Path: C:\...ents and Settings\Bioanalyzer\2013-12-16\2013-12-16\_002.xad

Created: 12/16/2013 1:18:16 PM  
Modified: 12/16/2013 2:16:56 PM

**Electropherogram Summary Continued ...**

... Region table for sample 11 : **HD40 Snoni 1:6**

From [bp]	To [bp]	Average Size [bp]	Molarity [pmol/l]	Conc. [pg/μl]	Corr. Area	% of Total	Size distribution in CV [%]	Color
92	1,458	384	19,810.7	3,284.46	1,508.4	95	58.1	■

Assay Class: High Sensitivity DNA Assay  
Data Path: C:\...ents and Settings\Bioanalyzer\2013-12-16\2013-12-16\_002.xad

Created: 12/16/2013 1:18:16 PM  
Modified: 12/16/2013 2:16:56 PM

**Gel Image**

