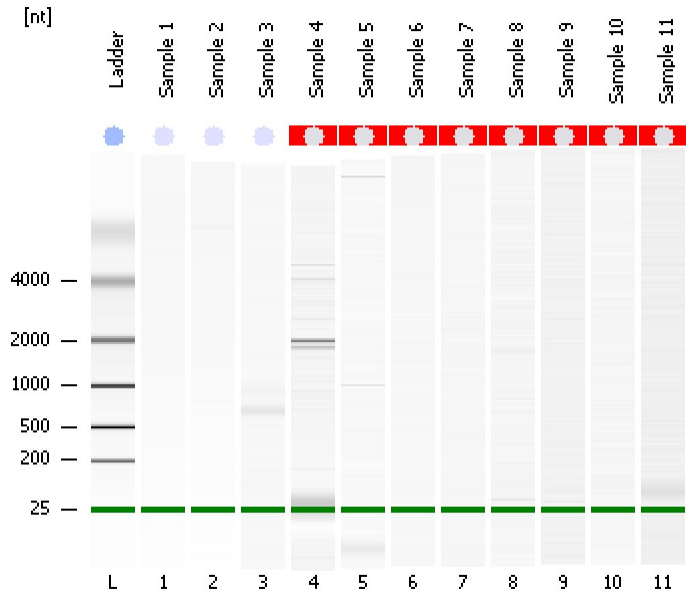


Assay Class: Eukaryote Total RNA Pico  
Data Path: C:\...ents and Settings\Bioanalyzer\2013-12-17\2013-12-17\_002.xad

Created: 12/17/2013 2:52:58 PM  
Modified: 12/17/2013 3:15:00 PM

### Electrophoresis File Run Summary



#### Instrument Information:

Instrument Name: DE13701086      Firmware: C.01.069  
Serial#: DE13701086      Type: G2938B

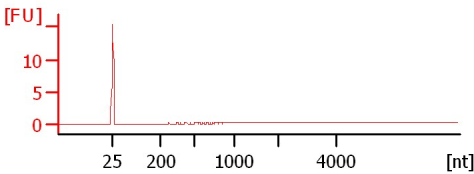
#### Assay Information:

Assay Origin Path: C:\Program Files\Agilent\2100 bioanalyzer\2100 expert\assays\RNA\Eukaryote Total RNA Pico Series II.xsy  
Assay Class: Eukaryote Total RNA Pico  
Version: 2.6  
Assay Comments: Total RNA Analysis pg sensitivity (Eukaryote)  
© Copyright 2003 - 2009 Agilent Technologies, Inc.

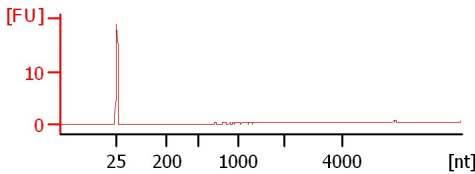
#### Chip Information:

Chip Lot #:      Reagent Kit Lot #:      Chip Comments:

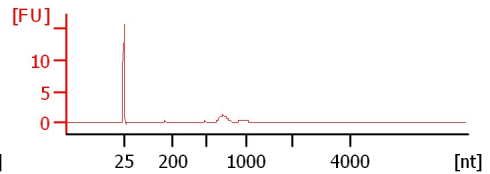
**Sample 1**  
wtxwt01  
RIN:1



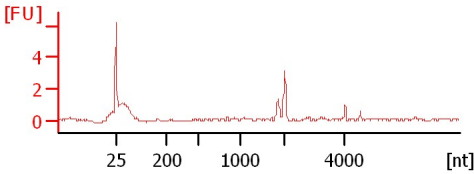
**Sample 2**  
wtxwt02  
RIN:1



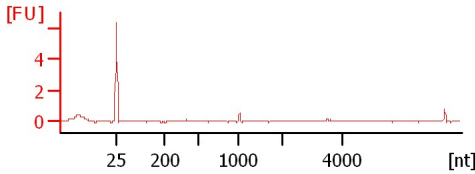
**Sample 3**  
wtxwt03  
RIN: 1.30



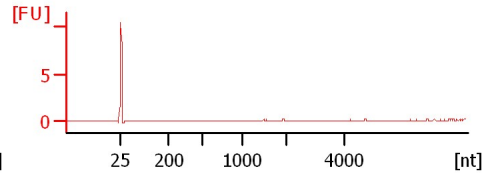
**Sample 4**  
wtxwt04(10)  
RIN N/A



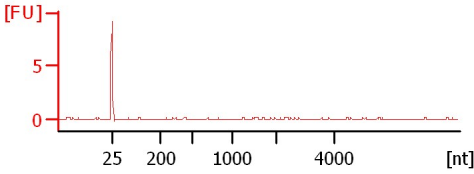
**Sample 5**  
tsxwt01  
RIN N/A



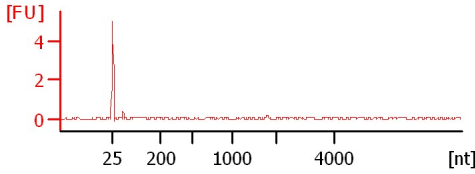
**Sample 6**  
tsxwt02  
RIN N/A



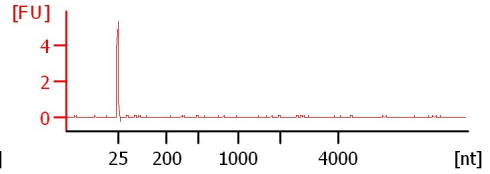
**Sample 7**  
tsxwt03  
RIN N/A



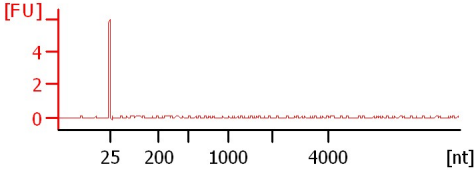
**Sample 8**  
tsxwt04(10)  
RIN N/A



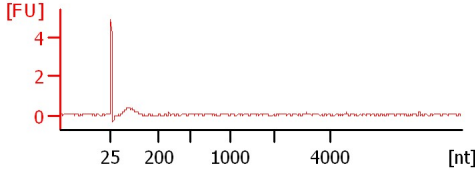
**Sample 9**  
tsxgfp01  
RIN N/A



**Sample 10**  
tsxgfp02  
RIN N/A



**Sample 11**  
tsxgfp04(10)  
RIN N/A



Assay Class: Eukaryote Total RNA Pico  
Data Path: C:\...ents and Settings\Bioanalyzer\2013-12-17\2013-12-17\_002.xad

Created: 12/17/2013 2:52:58 PM  
Modified: 12/17/2013 3:15:00 PM

**Electrophoresis File Run Summary (Chip Summary)**

Sample Name	Sample Comment	Status	Result Label	Result Color
Sample 1	wtxwt01	✓	RIN:1	
Sample 2	wtxwt02	✓	RIN:1	
Sample 3	wtxwt03	✓	RIN: 1.30	
Sample 4	wtxwt04(10)	✓	RIN N/A	
Sample 5	tsxwt01	✓	RIN N/A	
Sample 6	tsxwt02	✓	RIN N/A	
Sample 7	tsxwt03	✓	RIN N/A	
Sample 8	tsxwt04(10)	✓	RIN N/A	
Sample 9	tsxgfp01	✓	RIN N/A	
Sample 10	tsxgfp02	✓	RIN N/A	
Sample 11	tsxgfp04(10)	✓	RIN N/A	
Ladder		✓	All Other Samples	

**Chip Lot #**

**Reagent Kit Lot #**

**Chip Comments :**

Assay Class: Eukaryote Total RNA Pico  
Data Path: C:\...ents and Settings\Bioanalyzer\2013-12-17\2013-12-17\_002.xad

Created: 12/17/2013 2:52:58 PM  
Modified: 12/17/2013 3:15:00 PM

**Electrophoresis Assay Details**

**General Analysis Settings**

Number of Available Sample and Ladder Wells (Max.) : 12  
Minimum Visible Range [s] : 17  
Maximum Visible Range [s] : 70  
Start Analysis Time Range [s] : 18  
End Analysis Time Range [s] : 69  
Ladder Concentration [pg/μl] : 1000  
Lower Marker Concentration [pg/μl] : 0  
Upper Marker Concentration [pg/μl] : 0  
Used Lower Marker for Quantitation  
Standard Curve Fit is Logarithmic  
Show Data Aligned to Lower Marker

**Integrator Settings**

Integration Start Time [s] : 18  
Integration End Time [s] : 69  
Slope Threshold : 0.6  
Height Threshold [FU] : 0.5  
Area Threshold : 0.2  
Width Threshold [s] : 0.3  
Baseline Plateau [s] : 6

**Filter Settings**

Filter Width [s] : 0.5  
Polynomial Order : 4

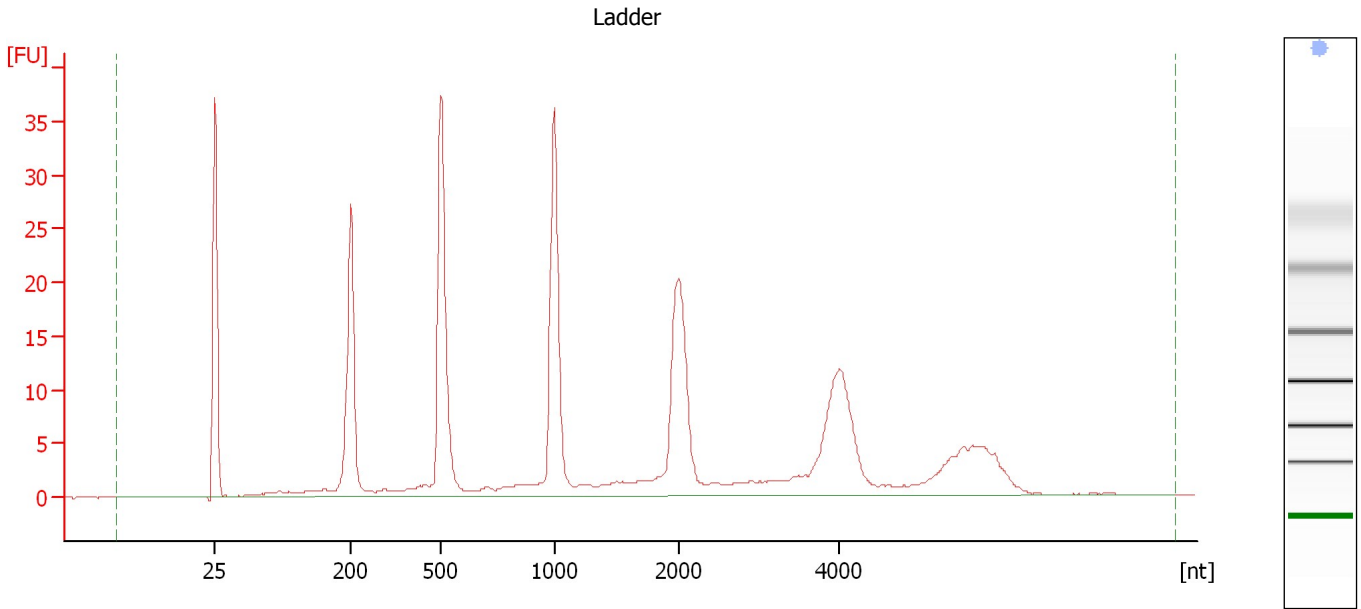
**Ladder**

Ladder Peak	Size
1	25
2	200
3	500
4	1000
5	2000
6	4000

Assay Class: Eukaryote Total RNA Pico  
Data Path: C:\...ents and Settings\Bioanalyzer\2013-12-17\2013-12-17\_002.xad

Created: 12/17/2013 2:52:58 PM  
Modified: 12/17/2013 3:15:00 PM

**Electropherogram Summary**



**Overall Results for Ladder**

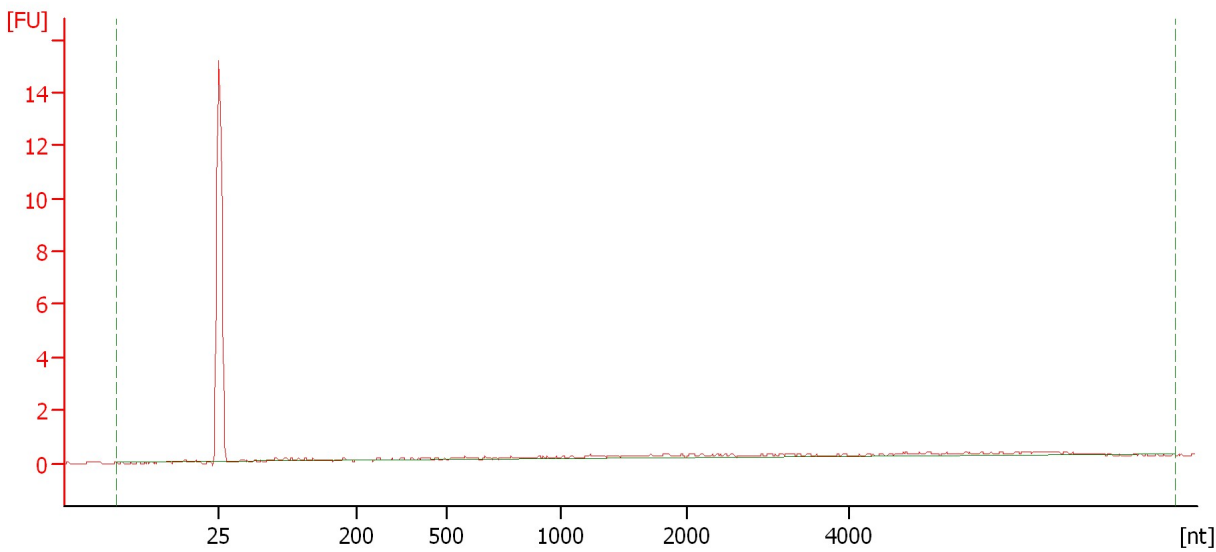
RNA Area:	267.6	Result Flagging Color:	<span style="background-color: #ADD8E6; border: 1px solid black; display: inline-block; width: 20px; height: 10px;"></span>
RNA Concentration:	1,000 pg/μl	Result Flagging Label:	All Other Samples

Assay Class: Eukaryote Total RNA Pico  
Data Path: C:\...ents and Settings\Bioanalyzer\2013-12-17\2013-12-17\_002.xad

Created: 12/17/2013 2:52:58 PM  
Modified: 12/17/2013 3:15:00 PM

**Electropherogram Summary Continued ...**

Sample 1 [ wtxwt01 ]



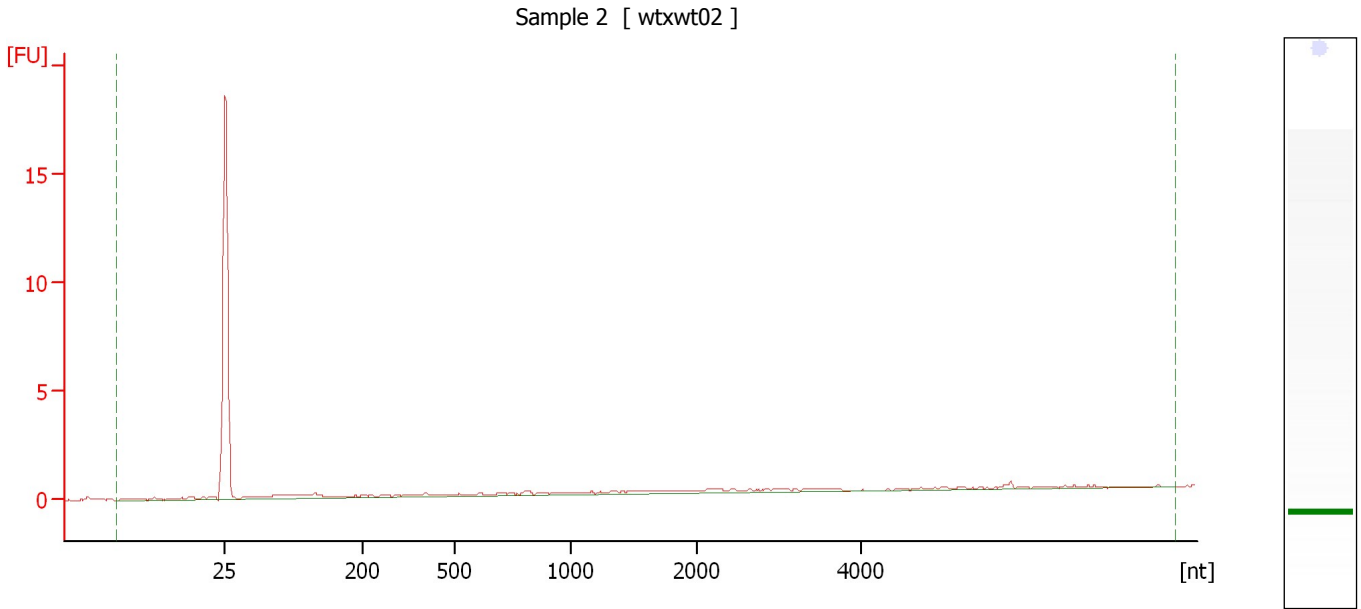
**Overall Results for sample 1 : Sample 1**

RNA Area:	7.5	RNA Integrity Number (RIN):	1 (B.02.08)
RNA Concentration:	28 pg/μl	Result Flagging Color:	<span style="background-color: #ccccff; border: 1px solid black; display: inline-block; width: 20px; height: 10px;"></span>
rRNA Ratio [28s / 18s]:	0.0	Result Flagging Label:	RIN:1

Assay Class: Eukaryote Total RNA Pico  
Data Path: C:\...ents and Settings\Bioanalyzer\2013-12-17\2013-12-17\_002.xad

Created: 12/17/2013 2:52:58 PM  
Modified: 12/17/2013 3:15:00 PM

**Electropherogram Summary Continued ...**



**Overall Results for sample 2 : Sample 2**

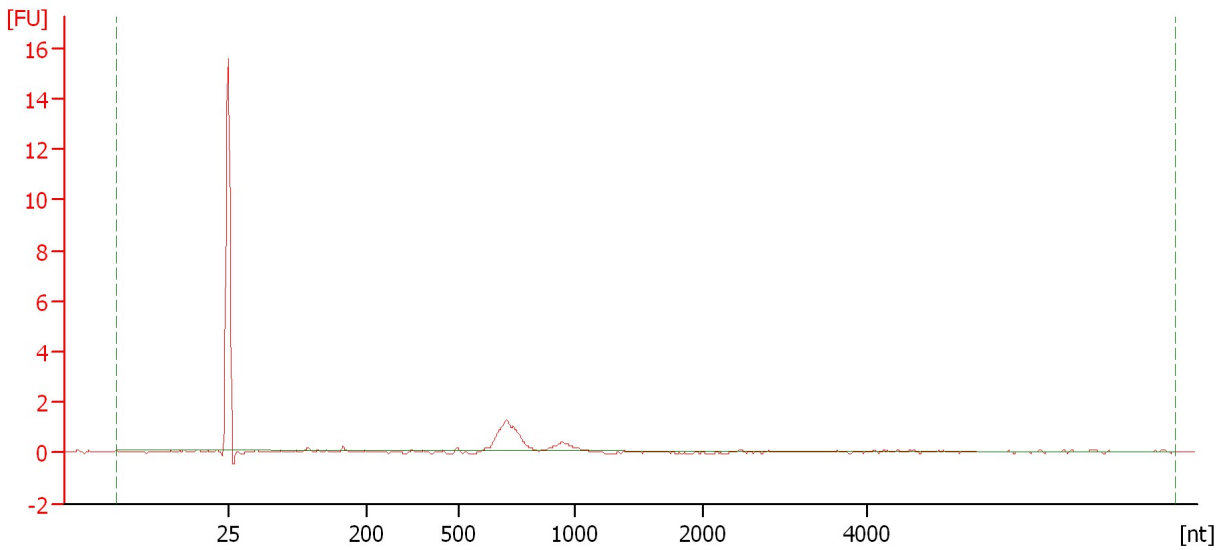
RNA Area:	8.2	RNA Integrity Number (RIN):	1 (B.02.08)
RNA Concentration:	31 pg/ $\mu$ l	Result Flagging Color:	<span style="background-color: #ccccff; border: 1px solid black; display: inline-block; width: 20px; height: 10px;"></span>
rRNA Ratio [28s / 18s]:	0.0	Result Flagging Label:	RIN:1

Assay Class: Eukaryote Total RNA Pico  
Data Path: C:\...ents and Settings\Bioanalyzer\2013-12-17\2013-12-17\_002.xad

Created: 12/17/2013 2:52:58 PM  
Modified: 12/17/2013 3:15:00 PM

**Electropherogram Summary Continued ...**

Sample 3 [ wtxwt03 ]



**Overall Results for sample 3 : Sample 3**

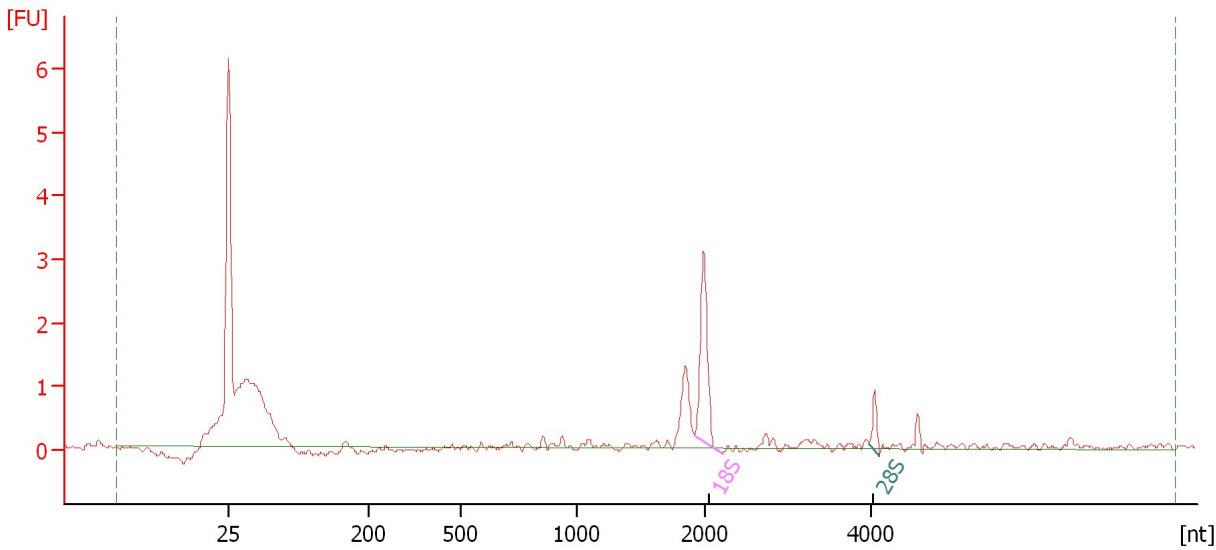
RNA Area:	4.8	RNA Integrity Number (RIN):	1.3 (B.02.08)
RNA Concentration:	18 pg/ $\mu$ l	Result Flagging Color:	<span style="background-color: #ccccff; border: 1px solid black; display: inline-block; width: 20px; height: 10px;"></span>
rRNA Ratio [28s / 18s]:	0.0	Result Flagging Label:	RIN: 1.30

Assay Class: Eukaryote Total RNA Pico  
Data Path: C:\...ents and Settings\Bioanalyzer\2013-12-17\2013-12-17\_002.xad

Created: 12/17/2013 2:52:58 PM  
Modified: 12/17/2013 3:15:00 PM

**Electropherogram Summary Continued ...**

Sample 4 [ wtxwt04(10) ]



**Overall Results for sample 4 : Sample 4**

RNA Area:	13.9	RNA Integrity Number (RIN):	N/A (B.02.08)
RNA Concentration:	52 pg/μl	Result Flagging Color:	<span style="background-color: #cccccc; border: 1px solid black; display: inline-block; width: 20px; height: 10px;"></span>
rRNA Ratio [28s / 18s]:	0.2	Result Flagging Label:	RIN N/A

**Fragment table for sample 4 : Sample 4**

Name	Start Size [nt]	End Size [nt]	Area	% of total Area
18S	1,918	2,223	2.5	17.7
28S	3,990	4,119	0.4	2.8

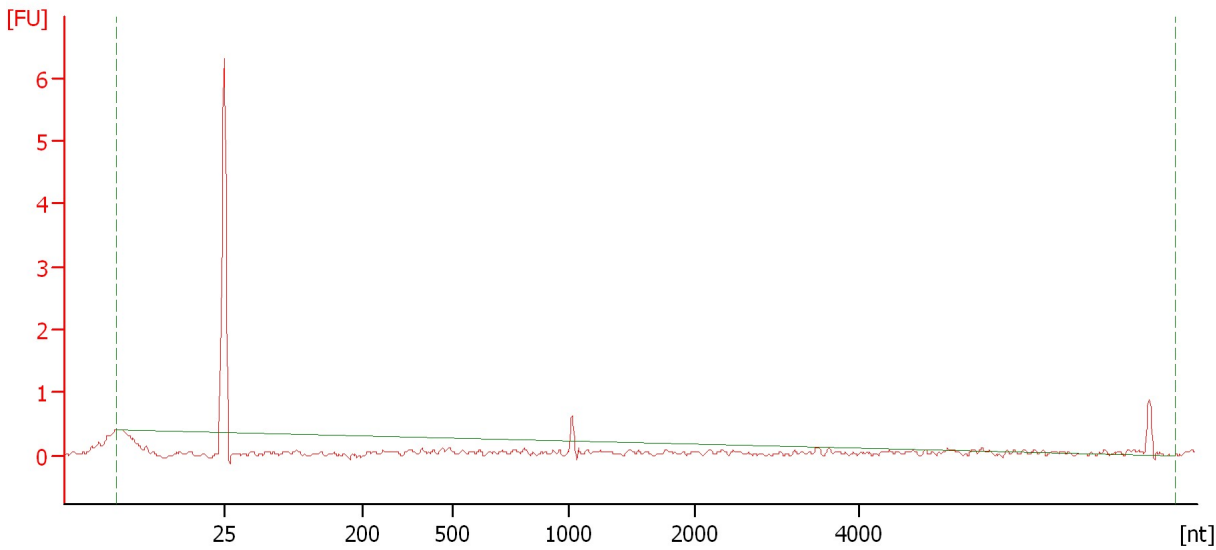


Assay Class: Eukaryote Total RNA Pico  
Data Path: C:\...ents and Settings\Bioanalyzer\2013-12-17\2013-12-17\_002.xad

Created: 12/17/2013 2:52:58 PM  
Modified: 12/17/2013 3:15:00 PM

**Electropherogram Summary Continued ...**

Sample 5 [ tsxwt01 ]



**Overall Results for sample 5 : Sample 5**

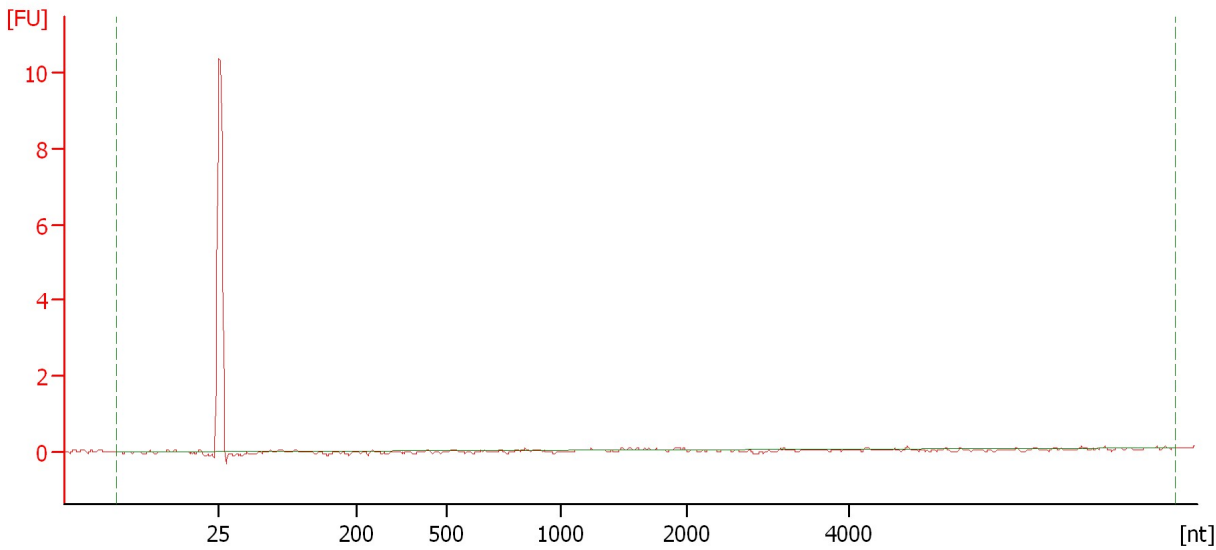
RNA Area:	0.6	RNA Integrity Number (RIN):	N/A (B.02.08)
RNA Concentration:	2 pg/ $\mu$ l	Result Flagging Color:	<span style="background-color: #cccccc; border: 1px solid black; display: inline-block; width: 20px; height: 10px;"></span>
rRNA Ratio [28s / 18s]:	0.0	Result Flagging Label:	RIN N/A

Assay Class: Eukaryote Total RNA Pico  
Data Path: C:\...ents and Settings\Bioanalyzer\2013-12-17\2013-12-17\_002.xad

Created: 12/17/2013 2:52:58 PM  
Modified: 12/17/2013 3:15:00 PM

**Electropherogram Summary Continued ...**

Sample 6 [ tsxwt02 ]



**Overall Results for sample 6 : Sample 6**

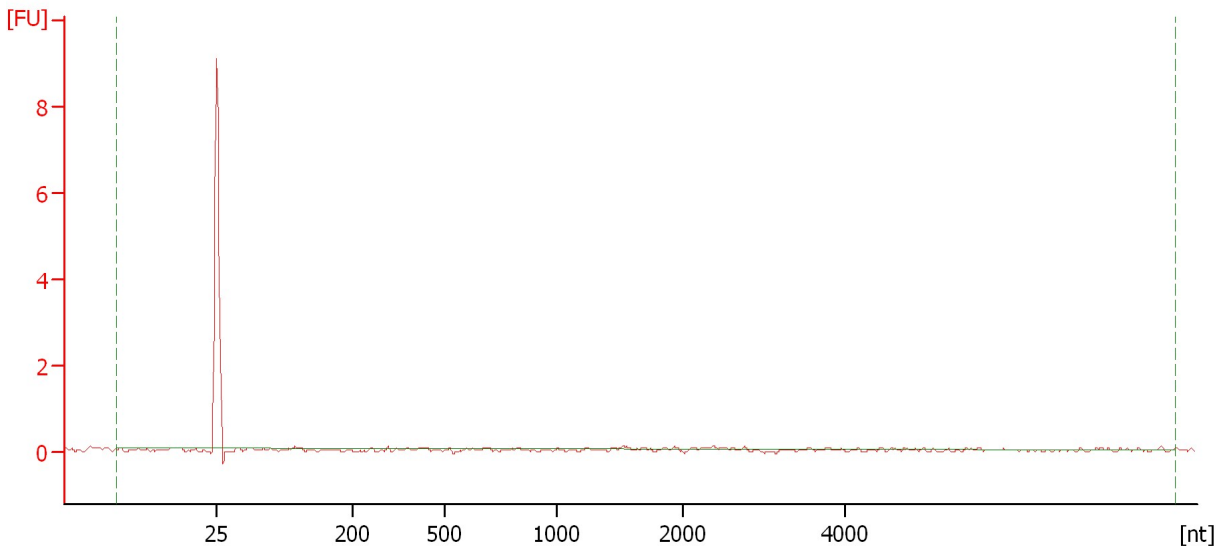
RNA Area:	0.3	RNA Integrity Number (RIN):	N/A (B.02.08)
RNA Concentration:	1 pg/ $\mu$ l	Result Flagging Color:	<span style="background-color: #cccccc; border: 1px solid black; display: inline-block; width: 20px; height: 10px;"></span>
rRNA Ratio [28s / 18s]:	0.0	Result Flagging Label:	RIN N/A

Assay Class: Eukaryote Total RNA Pico  
Data Path: C:\...ents and Settings\Bioanalyzer\2013-12-17\2013-12-17\_002.xad

Created: 12/17/2013 2:52:58 PM  
Modified: 12/17/2013 3:15:00 PM

**Electropherogram Summary Continued ...**

Sample 7 [ tsxwt03 ]



**Overall Results for sample 7 : Sample 7**

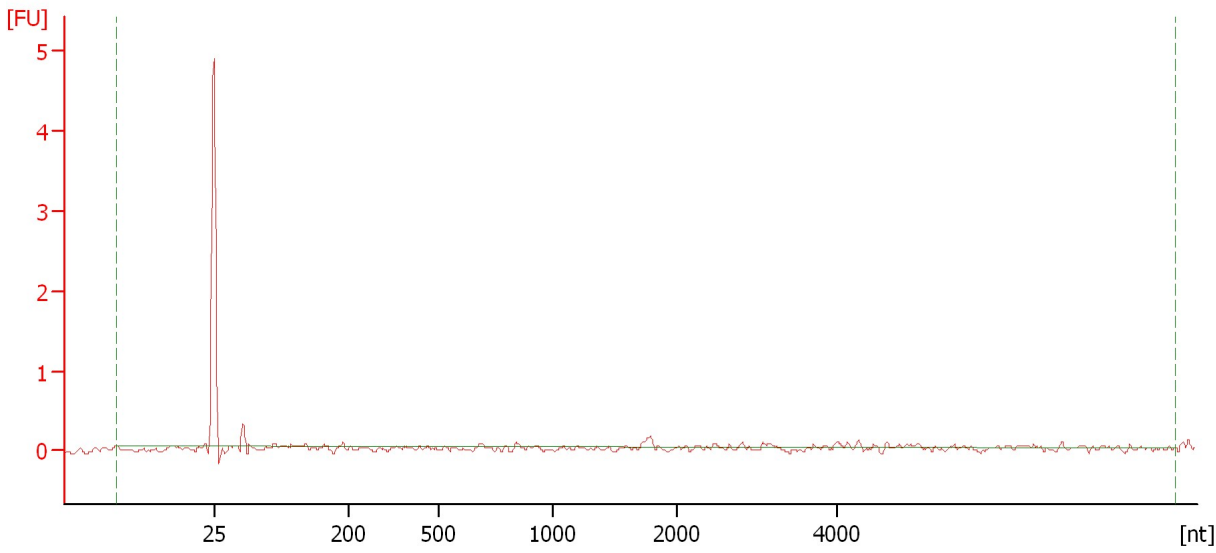
RNA Area:	0.6	RNA Integrity Number (RIN):	N/A (B.02.08)
RNA Concentration:	2 pg/μl	Result Flagging Color:	<span style="background-color: #cccccc; border: 1px solid black; display: inline-block; width: 20px; height: 10px;"></span>
rRNA Ratio [28s / 18s]:	0.0	Result Flagging Label:	RIN N/A

Assay Class: Eukaryote Total RNA Pico  
Data Path: C:\...ents and Settings\Bioanalyzer\2013-12-17\2013-12-17\_002.xad


Created: 12/17/2013 2:52:58 PM  
Modified: 12/17/2013 3:15:00 PM

**Electropherogram Summary Continued ...**

Sample 8 [ tsxwt04(10) ]



**Overall Results for sample 8 : Sample 8**

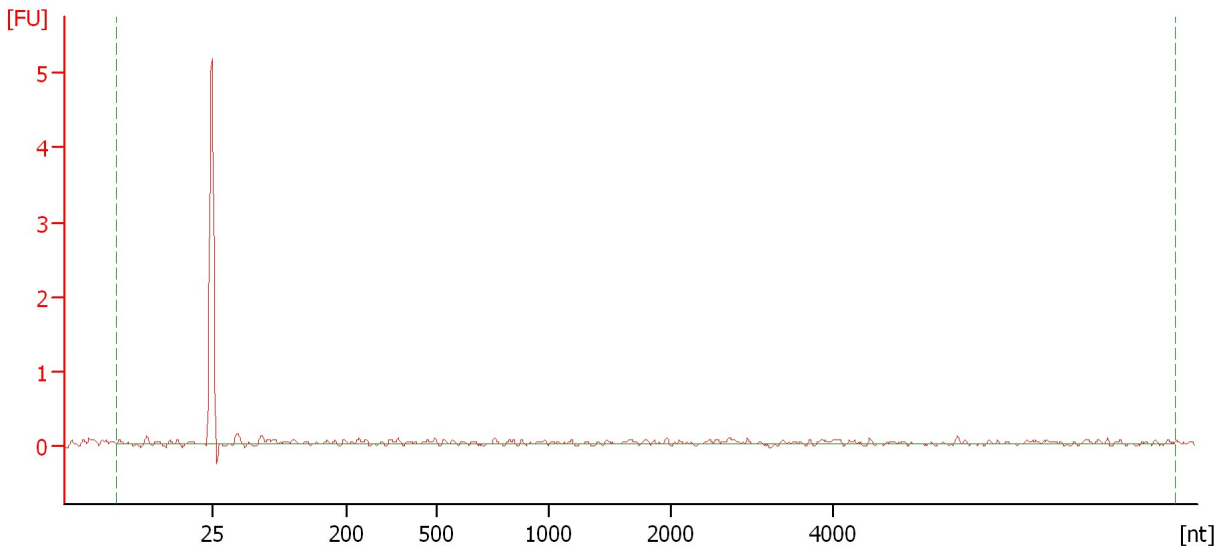
RNA Area:	1.1	RNA Integrity Number (RIN):	N/A (B.02.08)
RNA Concentration:	4 pg/μl	Result Flagging Color:	
rRNA Ratio [28s / 18s]:	0.0	Result Flagging Label:	RIN N/A

Assay Class: Eukaryote Total RNA Pico  
Data Path: C:\...ents and Settings\Bioanalyzer\2013-12-17\2013-12-17\_002.xad

Created: 12/17/2013 2:52:58 PM  
Modified: 12/17/2013 3:15:00 PM

**Electropherogram Summary Continued ...**

Sample 9 [ tsxgfp01 ]



**Overall Results for sample 9 : Sample 9**

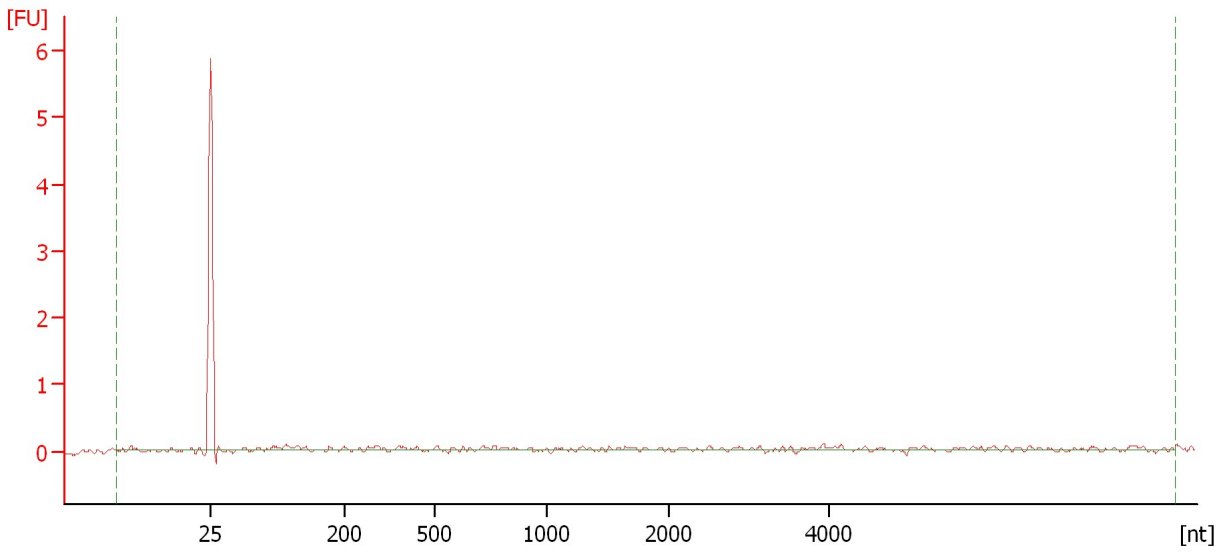
RNA Area:	1.8	RNA Integrity Number (RIN):	N/A (B.02.08)
RNA Concentration:	7 pg/μl	Result Flagging Color:	<span style="background-color: #cccccc; border: 1px solid black; display: inline-block; width: 20px; height: 10px;"></span>
rRNA Ratio [28s / 18s]:	0.0	Result Flagging Label:	RIN N/A

Assay Class: Eukaryote Total RNA Pico  
Data Path: C:\...ents and Settings\Bioanalyzer\2013-12-17\2013-12-17\_002.xad

Created: 12/17/2013 2:52:58 PM  
Modified: 12/17/2013 3:15:00 PM

**Electropherogram Summary Continued ...**

Sample 10 [ tsxgfp02 ]



**Overall Results for sample 10 : Sample 10**

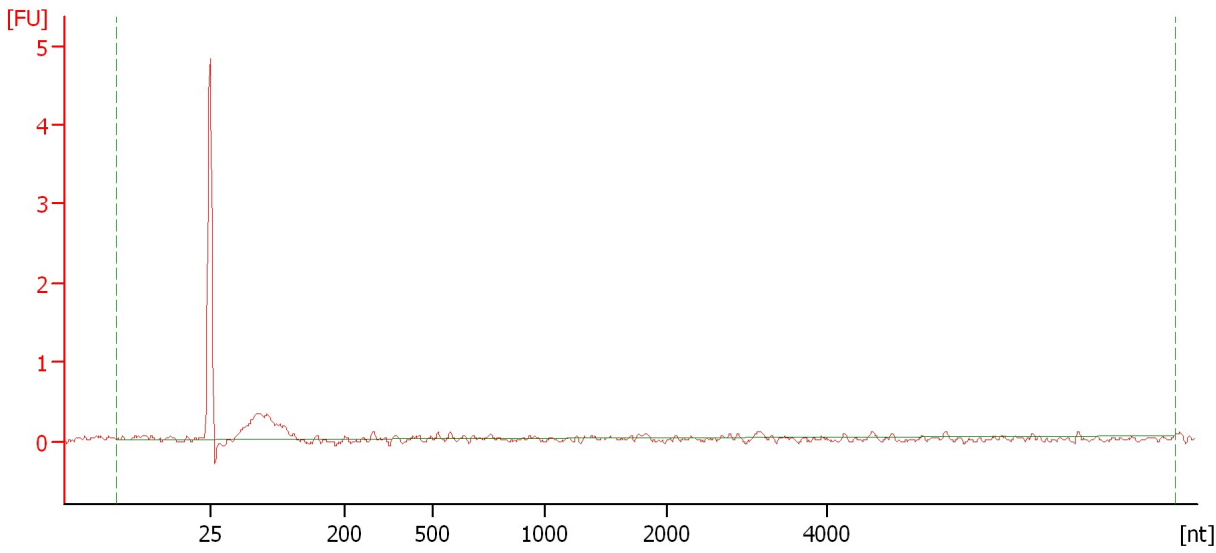
RNA Area:	1.5	RNA Integrity Number (RIN):	N/A (B.02.08)
RNA Concentration:	6 pg/μl	Result Flagging Color:	
rRNA Ratio [28s / 18s]:	0.0	Result Flagging Label:	RIN N/A

Assay Class: Eukaryote Total RNA Pico  
Data Path: C:\...ents and Settings\Bioanalyzer\2013-12-17\2013-12-17\_002.xad

Created: 12/17/2013 2:52:58 PM  
Modified: 12/17/2013 3:15:00 PM

**Electropherogram Summary Continued ...**

Sample 11 [ tsxgfp04(10) ]



**Overall Results for sample 11 : Sample 11**

RNA Area:	2.7	RNA Integrity Number (RIN):	N/A (B.02.08)
RNA Concentration:	10 pg/μl	Result Flagging Color:	
rRNA Ratio [28s / 18s]:	0.0	Result Flagging Label:	RIN N/A

Assay Class: Eukaryote Total RNA Pico  
Data Path: C:\...ents and Settings\Bioanalyzer\2013-12-17\2013-12-17\_002.xad

Created: 12/17/2013 2:52:58 PM  
Modified: 12/17/2013 3:15:00 PM

**Gel Image**

