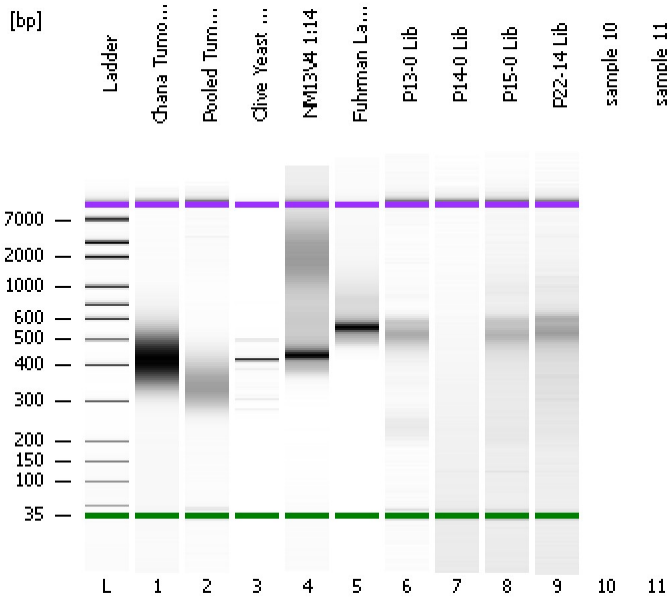


Assay Class: High Sensitivity DNA Assay
Data Path: C:\...ents and Settings\Bioanalyzer\2013-12-17\2013-12-17_003.xad

Created: 12/17/2013 4:41:51 PM
Modified: 12/17/2013 5:30:56 PM

Electrophoresis File Run Summary



Instrument Information:

Instrument Name: DE13701086 Firmware: C.01.069
Serial#: DE13701086 Type: G2938B

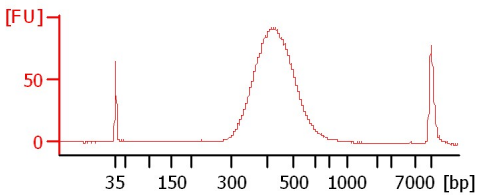
Assay Information:

Assay Origin Path: C:\Program Files\Agilent\2100 bioanalyzer\2100 expert\assays\dsDNA\High Sensitivity DNA.xsy
Assay Class: High Sensitivity DNA Assay
Version: 1.03
Assay Comments: Copyright © 2003-2010 Agilent Technologies

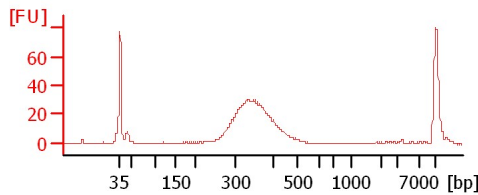
Chip Information:

Chip Lot #:
Reagent Kit Lot #:
Chip Comments:

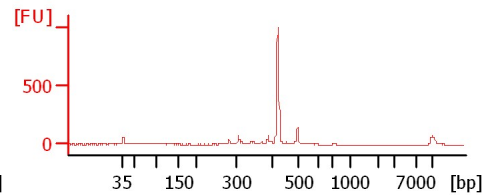
Chana Tumor #20 Lib 1:14



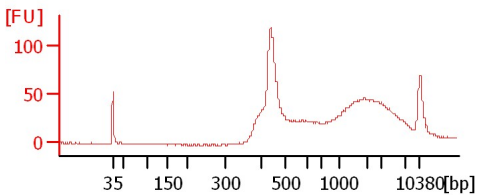
Pooled Tumor #21 Lib



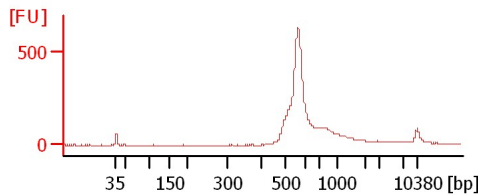
Olive Yeast Lib 1:11



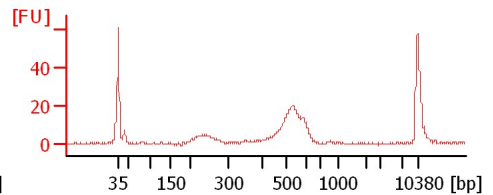
NM13V4 1:14



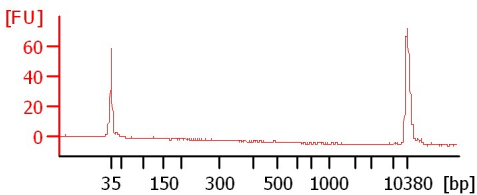
Fuhrman Lab Pool-4 1:2



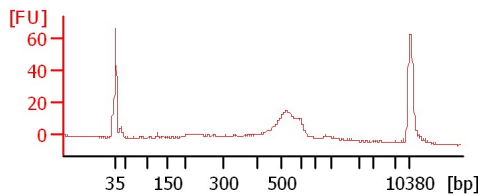
P13-0 Lib



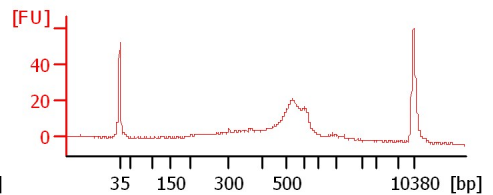
P14-0 Lib



P15-0 Lib



P22-14 Lib



Assay Class: High Sensitivity DNA Assay
Data Path: C:\...ents and Settings\Bioanalyzer\2013-12-17\2013-12-17_003.xad

Created: 12/17/2013 4:41:51 PM
Modified: 12/17/2013 5:30:56 PM

Electrophoresis File Run Summary (Chip Summary)

Sample Name	Sample Comment	Rest. Digest	Status	Observation	Result Label	Result Color
Chana Tumor #20 Lib 1:14		<input type="checkbox"/>	✓			
Pooled Tumor #21 Lib		<input type="checkbox"/>	✓			
Olive Yeast Lib 1:11		<input type="checkbox"/>	✓			
NM13V4 1:14		<input type="checkbox"/>	✓			
Fuhrman Lab Pool-4 1:2		<input type="checkbox"/>	✓			
P13-0 Lib		<input type="checkbox"/>	✓			
P14-0 Lib		<input type="checkbox"/>	✓			
P15-0 Lib		<input type="checkbox"/>	✓			
P22-14 Lib		<input type="checkbox"/>	✓			
sample 10		<input type="checkbox"/>				
sample 11		<input type="checkbox"/>				
Ladder		<input type="checkbox"/>	✓			

Chip Lot #

Reagent Kit Lot #

Chip Comments :

Assay Class: High Sensitivity DNA Assay
Data Path: C:\...ents and Settings\Bioanalyzer\2013-12-17\2013-12-17_003.xad

Created: 12/17/2013 4:41:51 PM
Modified: 12/17/2013 5:30:56 PM

Electrophoresis Assay Details

General Analysis Settings

Number of Available Sample and Ladder Wells (Max.) : 12
Minimum Visible Range [s] : 32
Maximum Visible Range [s] : 138
Start Analysis Time Range [s] : 33
End Analysis Time Range [s] : 137.5
Ladder Concentration [pg/μl] : 1950
Uses Standard Area for Ladder Fragments
Lower Marker Concentration [pg/μl] : 125
Upper Marker Concentration [pg/μl] : 75
Used Upper Marker for Quantitation
Standard Curve Fit is Point to Point
Show Data Aligned to Lower and Upper Marker

Integrator Settings

Integration Start Time [s] : 33.05
Integration End Time [s] : 137
Slope Threshold : 0.8
Height Threshold [FU] : 5
Area Threshold : 0.1
Width Threshold [s] : 0.6
Baseline Plateau [s] : 0.5

Filter Settings

Filter Width [s] : 0.5
Polynomial Order : 4

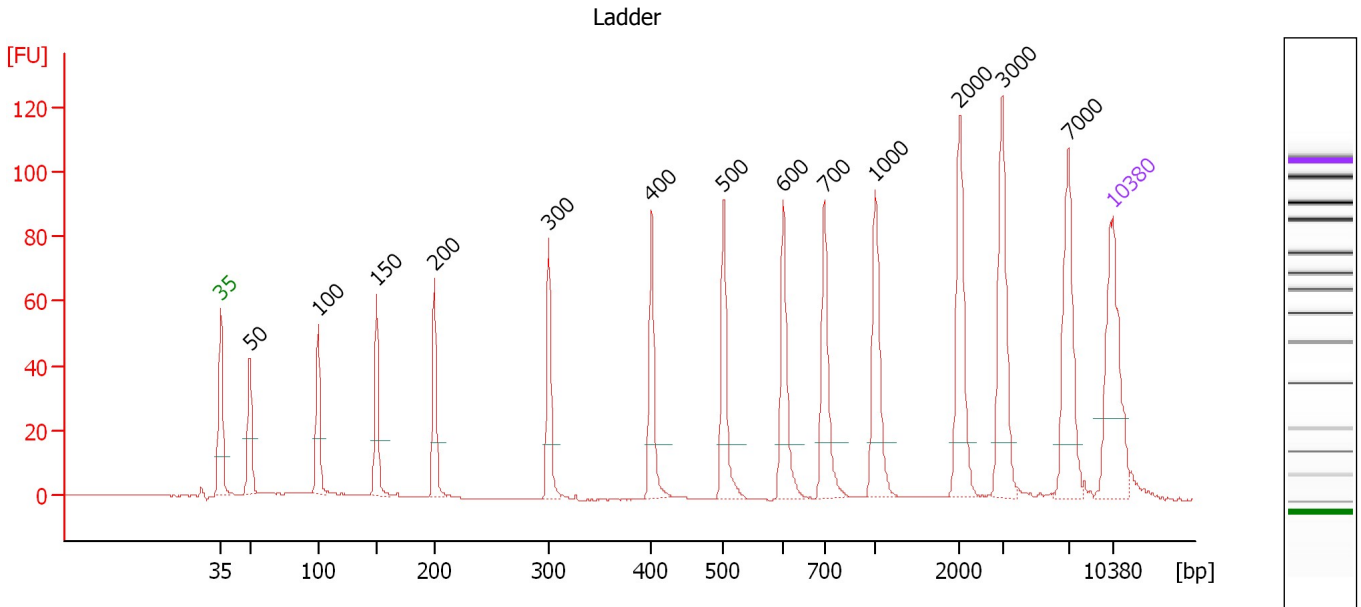
Ladder

Ladder Peak	Size	Area
1	35	160
2	50	210
3	100	208
4	150	221
5	200	242
6	300	270
7	400	305
8	500	306
9	600	336
10	700	321
11	1000	366
12	2000	413
13	3000	411
14	7000	400
15	10380	214

Assay Class: High Sensitivity DNA Assay
 Data Path: C:\...ents and Settings\Bioanalyzer\2013-12-17\2013-12-17_003.xad

Created: 12/17/2013 4:41:51 PM
 Modified: 12/17/2013 5:30:56 PM

Electropherogram Summary



Overall Results for Ladder

Noise: 0.2

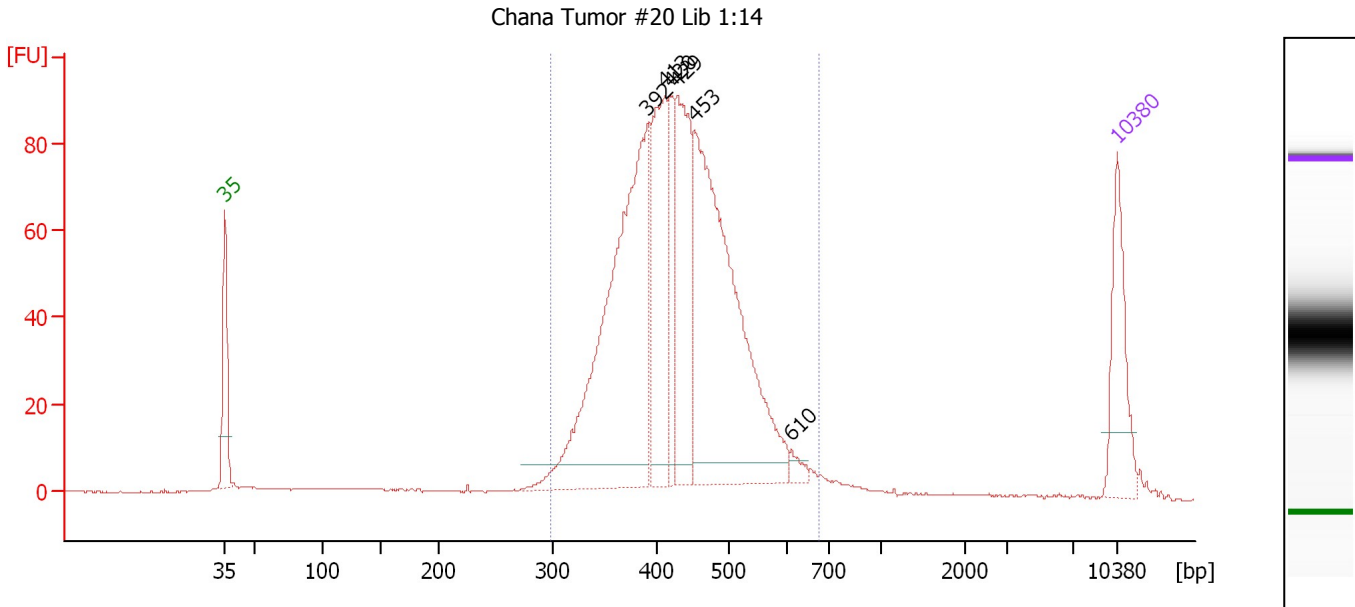
Peak table for Ladder

Peak	Aligned Migration Time [s]	Size [bp]	Conc. [pg/μl]	Molarity [pmol/l]	Observations
1	43.00	35	125.00	5,411.3	Lower Marker
2	45.30	50	150.00	4,545.5	Ladder Peak
3	50.66	100	150.00	2,272.7	Ladder Peak
4	55.26	150	150.00	1,515.2	Ladder Peak
5	59.78	200	150.00	1,136.4	Ladder Peak
6	68.73	300	150.00	757.6	Ladder Peak
7	76.81	400	150.00	568.2	Ladder Peak
8	82.46	500	150.00	454.5	Ladder Peak
9	87.14	600	150.00	378.8	Ladder Peak
10	90.36	700	150.00	324.7	Ladder Peak
11	94.38	1,000	150.00	227.3	Ladder Peak
12	100.99	2,000	150.00	113.6	Ladder Peak
13	104.34	3,000	150.00	75.8	Ladder Peak
14	109.53	7,000	150.00	32.5	Ladder Peak
15	113.00	10,380	75.00	10.9	Upper Marker

Assay Class: High Sensitivity DNA Assay
 Data Path: C:\...ents and Settings\Bioanalyzer\2013-12-17\2013-12-17_003.xad

Created: 12/17/2013 4:41:51 PM
 Modified: 12/17/2013 5:30:56 PM

Electropherogram Summary Continued ...



Overall Results for sample 1 : Chana Tumor #20 Lib 1:14

Number of peaks found: 6 Corr. Area 1: 1,304.8
 Noise: 0.2

Peak table for sample 1 : Chana Tumor #20 Lib 1:14

Peak	Aligned Migration Time [s]	Size [bp]	Conc. [pg/μl]	Molarity [pmol/l]	Observations
1	43.00	35	125.00	5,411.3	Lower Marker
2	76.16	392	523.47	2,023.4	
3	77.54	413	201.76	740.2	
4	77.92	420	80.91	292.1	
5	78.42	429	202.98	717.7	
6	79.80	453	505.37	1,690.5	
7	87.45	610	10.82	26.9	
8	113.00	10,380	75.00	10.9	Upper Marker

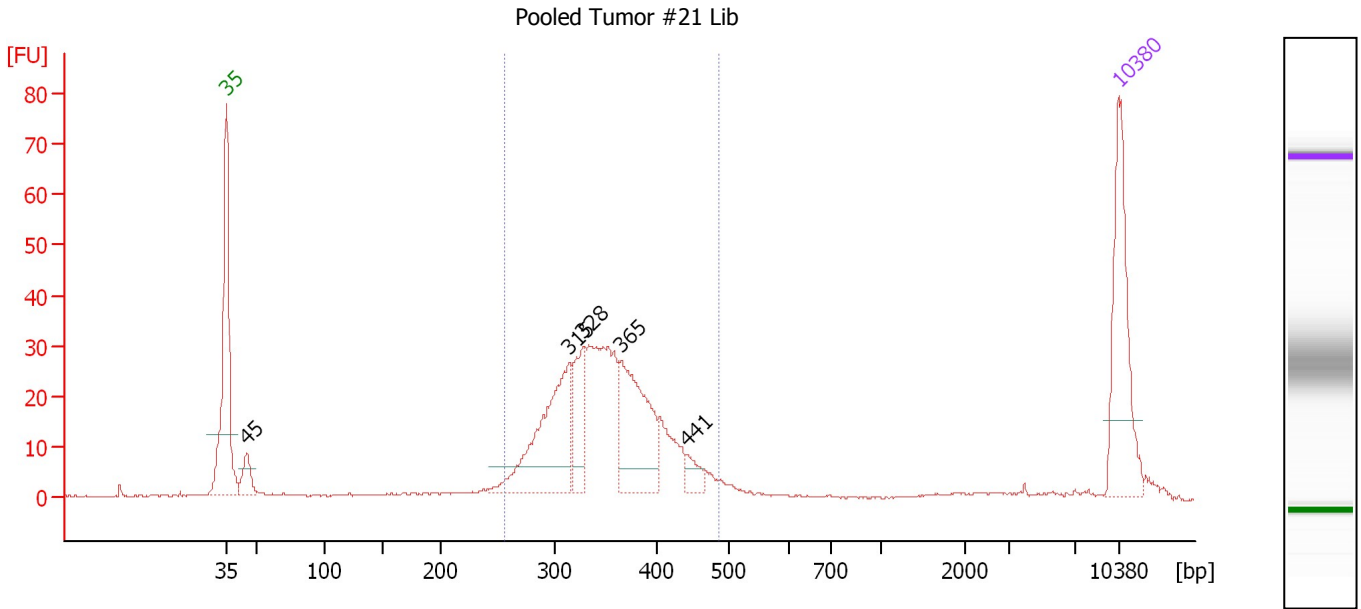
Region table for sample 1 : Chana Tumor #20 Lib 1:14

From [bp]	To [bp]	Average Size [bp]	Molarity [pmol/l]	Conc. [pg/μl]	Corr. Area	% of Total	Size distribution in CV [%]	Color
297	674	433	5,868.8	1,628.82	1,304.8	94	15.7	Blue

Assay Class: High Sensitivity DNA Assay
 Data Path: C:\...ents and Settings\Bioanalyzer\2013-12-17\2013-12-17_003.xad

Created: 12/17/2013 4:41:51 PM
 Modified: 12/17/2013 5:30:56 PM

Electropherogram Summary Continued ...



Overall Results for sample 2 : Pooled Tumor #21 Lib

Number of peaks found: 5 Corr. Area 1: 426.6
 Noise: 0.2

Peak table for sample 2 : Pooled Tumor #21 Lib

Peak	Aligned Migration Time [s]	Size [bp]	Conc. [pg/μl]	Molarity [pmol/l]	Observations
1	43.00	35	125.00	5,411.3	Lower Marker
2	44.59	45	24.76	827.0	
3	69.90	315	136.02	655.3	
4	71.03	328	51.15	235.9	
5	74.00	365	109.55	454.4	
6	79.11	441	13.91	47.8	
7	113.00	10,380	75.00	10.9	Upper Marker

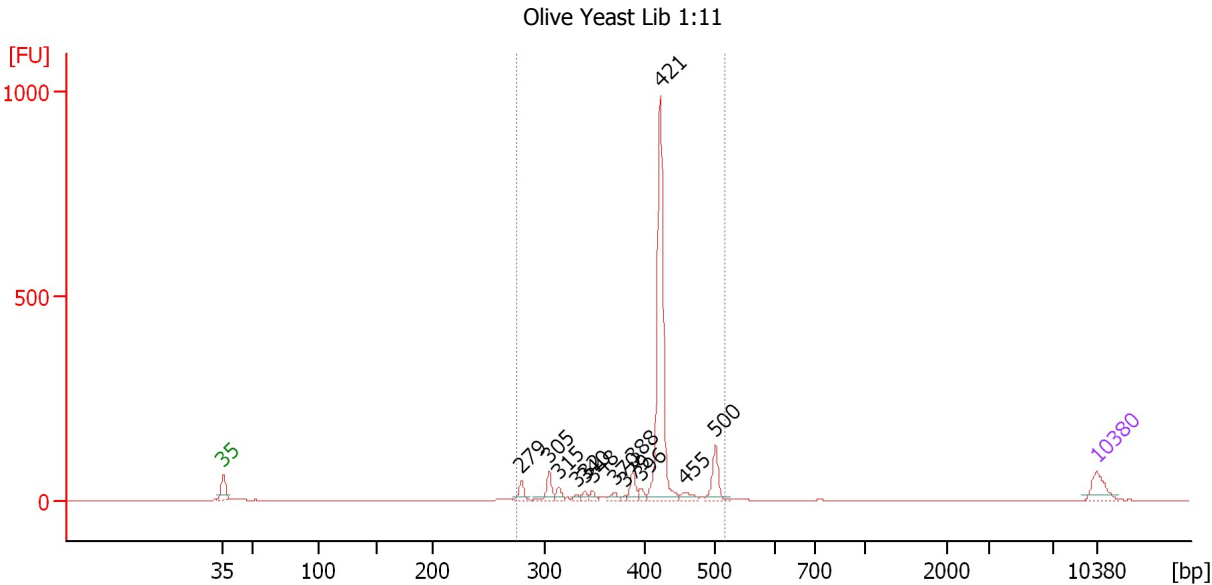
Region table for sample 2 : Pooled Tumor #21 Lib

From [bp]	To [bp]	Average Size [bp]	Molarity [pmol/l]	Conc. [pg/μl]	Corr. Area	% of Total	Size distribution in CV [%]	Color
256	486	351	2,323.5	526.40	426.6	82	13.6	Blue

Assay Class: High Sensitivity DNA Assay
 Data Path: C:\...ents and Settings\Bioanalyzer\2013-12-17\2013-12-17_003.xad

Created: 12/17/2013 4:41:51 PM
 Modified: 12/17/2013 5:30:56 PM

Electropherogram Summary Continued ...



Setpoint Deviations for sample 3 : Olive Yeast Lib 1:11

Height Threshold [FU] : 10

Overall Results for sample 3 : Olive Yeast Lib 1:11

Number of peaks found: 13 Corr. Area 1: 1,172.5
 Noise: 0.2

Peak table for sample 3 : Olive Yeast Lib 1:11

Peak	Aligned Migration Time [s]	Size [bp]	Conc. [pg/μl]	Molarity [pmol/l]	Observations
1	43.00	35	125.00	5,411.3	Lower Marker
2	66.89	279	57.10	309.6	
3	69.10	305	77.46	385.4	
4	69.90	315	33.70	162.4	
5	71.35	332	14.14	64.4	
6	71.94	340	21.93	97.8	
7	72.58	348	22.89	99.8	
8	74.37	370	24.55	100.6	
9	75.13	379	9.92	39.6	
10	75.81	388	63.99	250.1	
11	76.49	396	26.79	102.5	
12	77.98	421	974.01	3,507.6	
13	79.93	455	37.14	123.6	
14	82.44	500	128.39	389.3	
15	113.00	10,380	75.00	10.9	Upper Marker

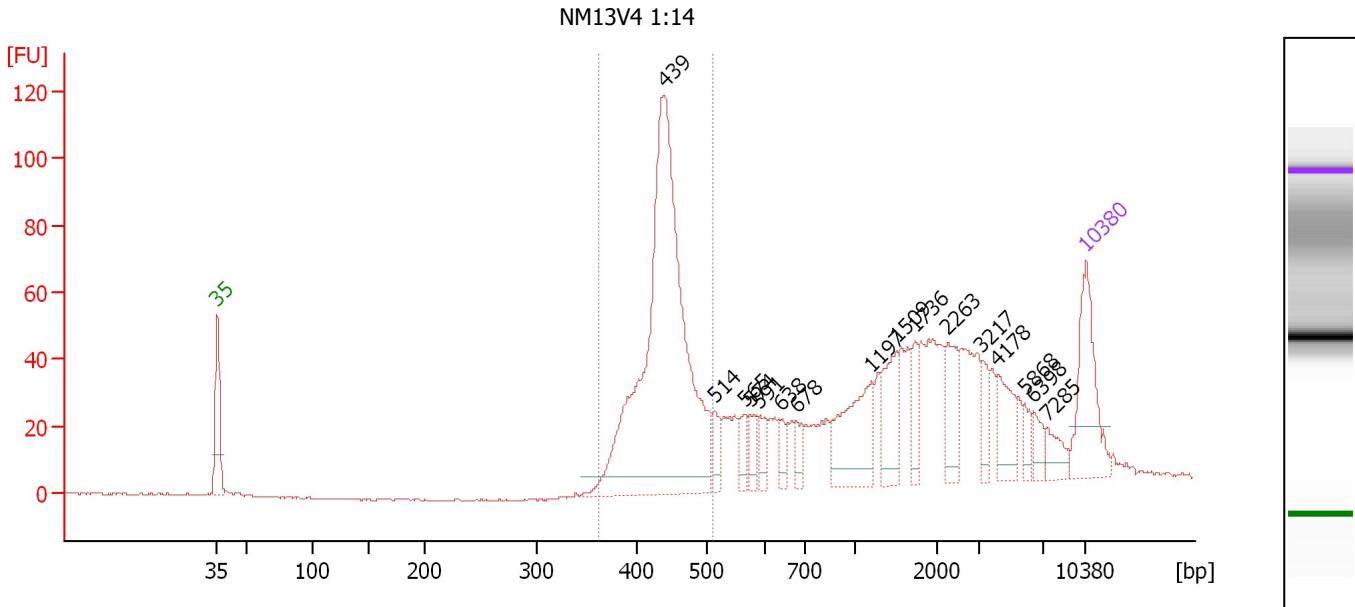
Region table for sample 3 : Olive Yeast Lib 1:11

From [bp]	To [bp]	Average Size [bp]	Molarity [pmol/l]	Conc. [pg/μl]	Corr. Area	% of Total	Size distribution in CV [%]	Color
275	516	412	5,785.1	1,540.21	1,172.4	94	11.8	Blue

Assay Class: High Sensitivity DNA Assay
 Data Path: C:\...ents and Settings\Bioanalyzer\2013-12-17\2013-12-17_003.xad

Created: 12/17/2013 4:41:51 PM
 Modified: 12/17/2013 5:30:56 PM

Electropherogram Summary Continued ...



Overall Results for sample 4 : NM13V4 1:14

Number of peaks found: 16 Corr. Area 1: 502.4
 Noise: 0.3

Peak table for sample 4 : NM13V4 1:14

Peak	Aligned Migration Time [s]	Size [bp]	Conc. [pg/μl]	Molarity [pmol/l]	Observations
1	43.00	35	125.00	5,411.3	Lower Marker
2	79.01	439	638.32	2,203.1	
3	83.09	514	24.22	71.5	
4	85.50	565	20.46	54.9	
5	85.93	574	20.26	53.5	
6	86.70	591	21.53	55.2	
7	88.38	638	17.83	42.3	
8	89.67	678	18.26	40.8	
9	95.68	1,197	89.46	113.2	
10	97.75	1,509	50.97	51.2	
11	99.25	1,736	25.16	22.0	
12	101.87	2,263	41.80	28.0	
13	104.62	3,217	20.70	9.7	
14	105.87	4,178	38.92	14.1	
15	108.06	5,868	11.68	3.0	
16	108.75	6,398	15.76	3.7	
17	109.82	7,285	19.43	4.0	
18	113.00	10,380	75.00	10.9	Upper Marker

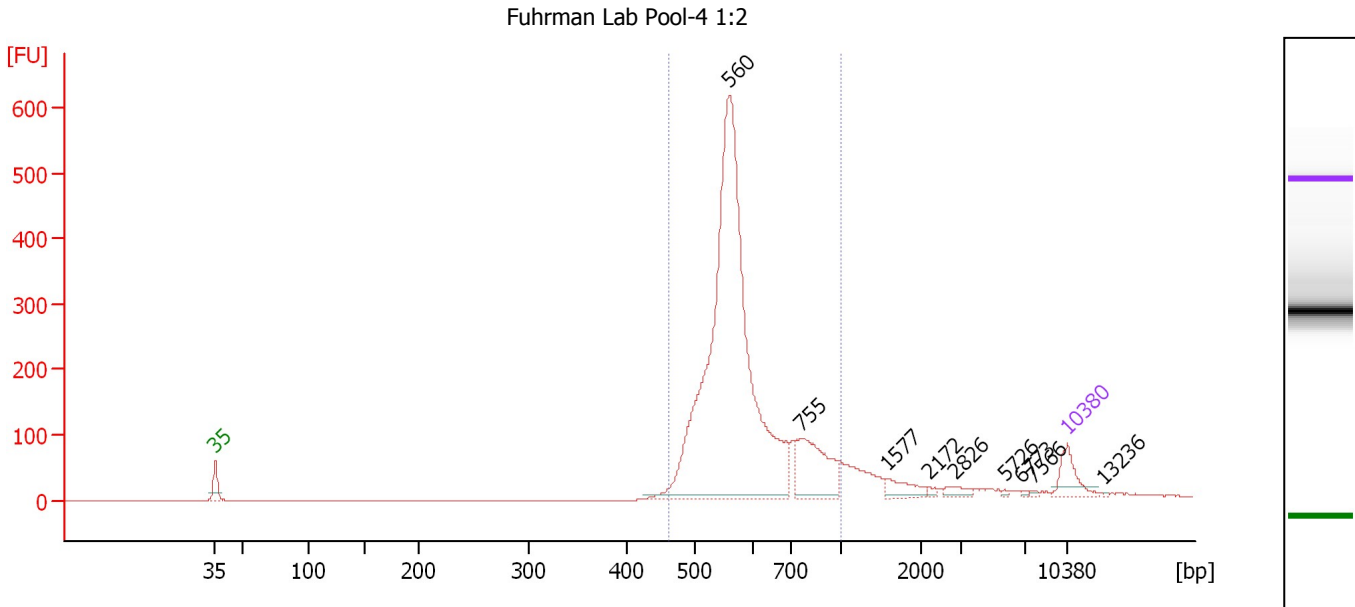
Region table for sample 4 : NM13V4 1:14

From [bp]	To [bp]	Average Size [bp]	Molarity [pmol/l]	Conc. [pg/μl]	Corr. Area	% of Total	Size distribution in CV [%]	Color
363	509	439	2,047.8	591.17	502.4	39	6.8	Blue

Assay Class: High Sensitivity DNA Assay
 Data Path: C:\...ents and Settings\Bioanalyzer\2013-12-17\2013-12-17_003.xad

Created: 12/17/2013 4:41:51 PM
 Modified: 12/17/2013 5:30:56 PM

Electropherogram Summary Continued ...



Overall Results for sample 5 : Fuhrman Lab Pool-4 1:2

Number of peaks found: 9 Corr. Area 1: 2,884.5
 Noise: 0.7

Peak table for sample 5 : Fuhrman Lab Pool-4 1:2

Peak	Aligned Migration Time [s]	Size [bp]	Conc. [pg/μl]	Molarity [pmol/l]	Observations
1	43.00	35	125.00	5,411.3	Lower Marker
2	85.27	560	2,357.30	6,377.0	
3	91.10	755	281.10	564.3	
4	98.19	1,577	60.76	58.4	
5	101.57	2,172	8.10	5.6	
6	103.76	2,826	27.33	14.7	
7	107.87	5,726	4.13	1.1	
8	109.23	6,773	4.44	1.0	
9	110.11	7,566	4.91	1.0	
10	113.00	10,380	75.00	10.9	Upper Marker
11	115.93	13,236	0.00	0.0	

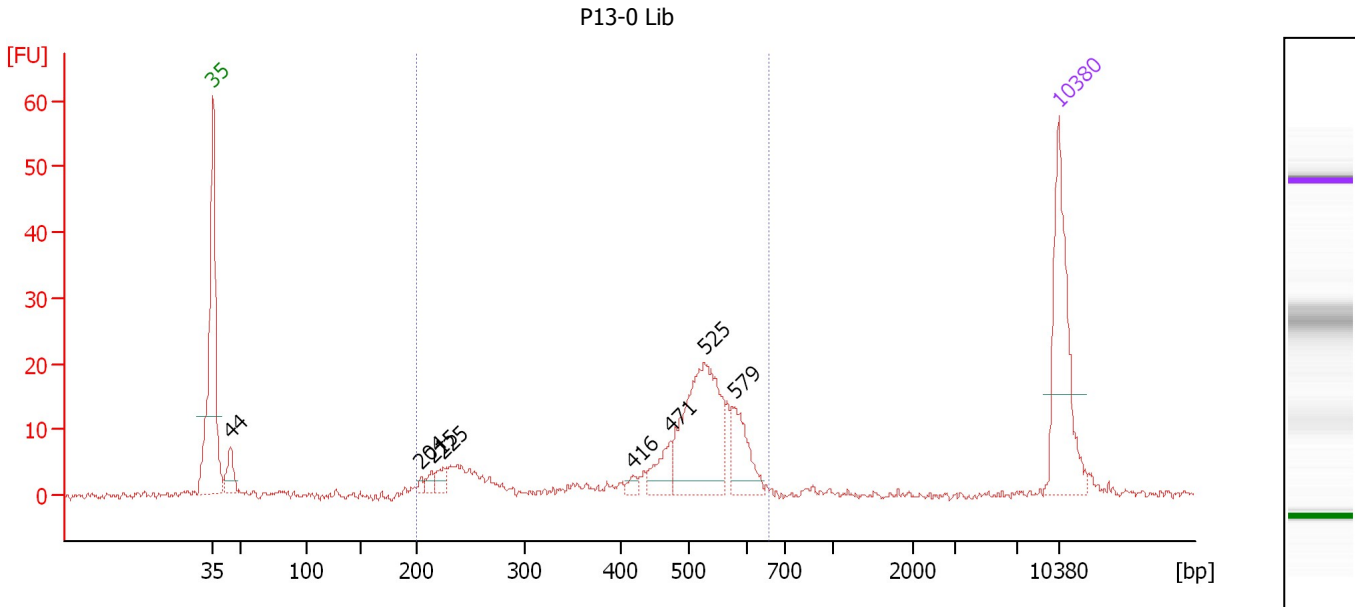
Region table for sample 5 : Fuhrman Lab Pool-4 1:2

From [bp]	To [bp]	Average Size [bp]	Molarity [pmol/l]	Conc. [pg/μl]	Corr. Area	% of Total	Size distribution in CV [%]	Color
461	1,000	598	6,933.6	2,657.77	2,884.5	88	17.4	Blue

Assay Class: High Sensitivity DNA Assay
 Data Path: C:\...ents and Settings\Bioanalyzer\2013-12-17\2013-12-17_003.xad

Created: 12/17/2013 4:41:51 PM
 Modified: 12/17/2013 5:30:56 PM

Electropherogram Summary Continued ...



Setpoint Deviations for sample 6 : P13-0 Lib

Height Threshold [FU] : 2

Overall Results for sample 6 : P13-0 Lib

Number of peaks found: 8 Corr. Area 1: 184.3
 Noise: 0.6

Peak table for sample 6 : P13-0 Lib

Peak	Aligned Migration Time [s]	Size [bp]	Conc. [pg/μl]	Molarity [pmol/l]	Observations
1	43.00	35	125.00	5,411.3	Lower Marker
2	44.41	44	25.22	864.5	
3	60.17	204	3.40	25.2	
4	61.10	215	6.70	47.3	
5	62.02	225	10.38	69.9	
6	77.74	416	4.82	17.6	
7	80.82	471	22.46	72.2	
8	83.65	525	124.60	359.3	
9	86.17	579	37.05	96.9	
10	113.00	10,380	75.00	10.9	Upper Marker

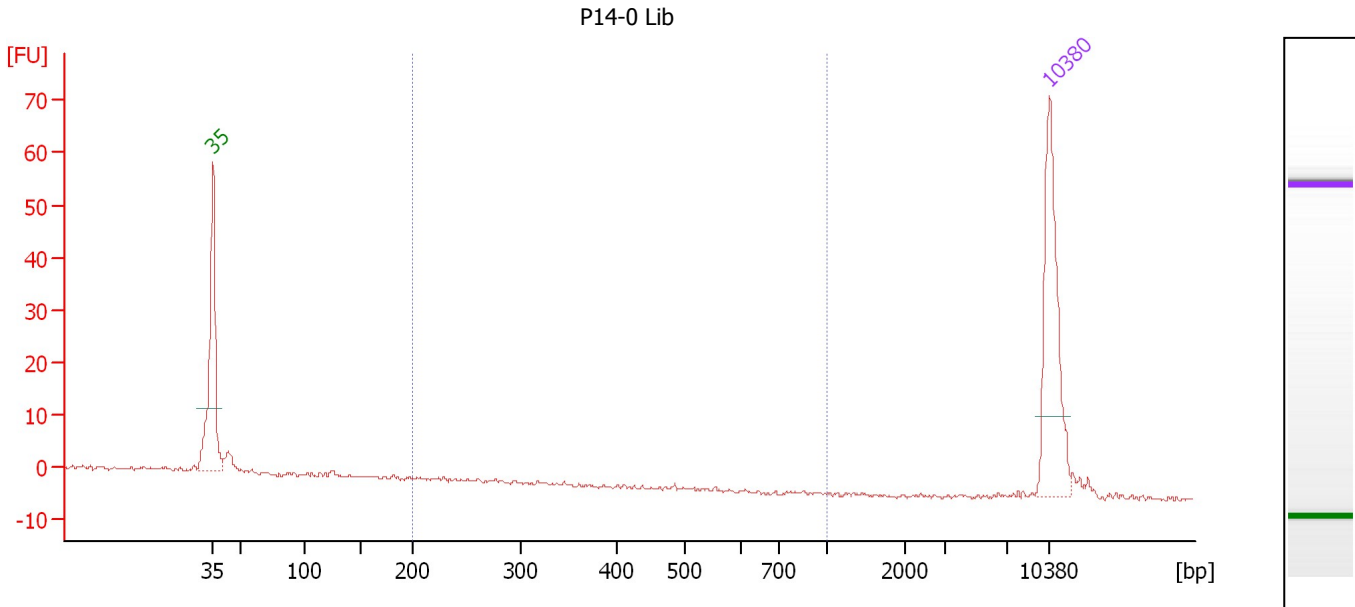
Region table for sample 6 : P13-0 Lib

From [bp]	To [bp]	Average Size [bp]	Molarity [pmol/l]	Conc. [pg/μl]	Corr. Area	% of Total	Size distribution in CV [%]	Color
200	657	473	1,087.2	287.57	184.3	88	24.6	Blue

Assay Class: High Sensitivity DNA Assay
 Data Path: C:\...ents and Settings\Bioanalyzer\2013-12-17\2013-12-17_003.xad

Created: 12/17/2013 4:41:51 PM
 Modified: 12/17/2013 5:30:56 PM

Electropherogram Summary Continued ...



Overall Results for sample 7 : P14-0 Lib

Number of peaks found: 0 Corr. Area 1: 0.1
 Noise: 0.4

Peak table for sample 7 : P14-0 Lib

Peak	Aligned Migration Time [s]	Size [bp]	Conc. [pg/μl]	Molarity [pmol/l]	Observations
1	43.00	35	125.00	5,411.3	Lower Marker
2	113.00	10,380	75.00	10.9	Upper Marker

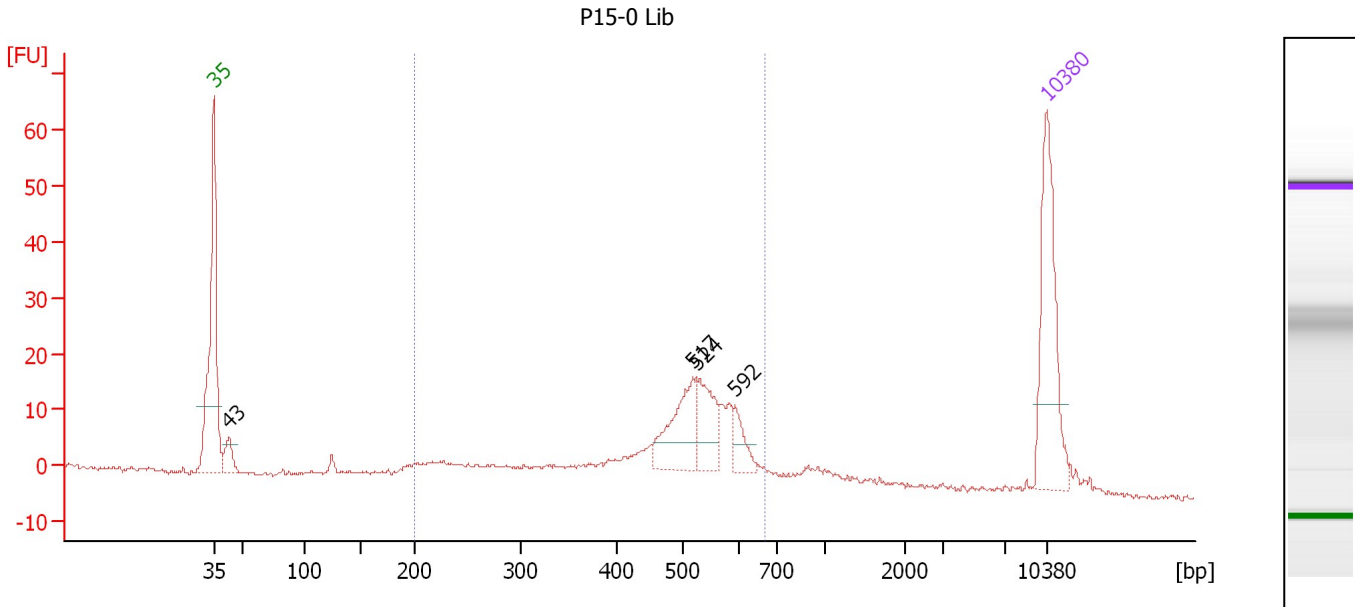
Region table for sample 7 : P14-0 Lib

From [bp]	To [bp]	Average Size [bp]	Molarity [pmol/l]	Conc. [pg/μl]	Corr. Area	% of Total	Size distribution in CV [%]	Color
200	1,000	303	1.0	0.18	0.1	1	34.1	Blue

Assay Class: High Sensitivity DNA Assay
 Data Path: C:\...ents and Settings\Bioanalyzer\2013-12-17\2013-12-17_003.xad

Created: 12/17/2013 4:41:51 PM
 Modified: 12/17/2013 5:30:56 PM

Electropherogram Summary Continued ...



Overall Results for sample 8 : P15-0 Lib

Number of peaks found: 4 Corr. Area 1: 218.4
 Noise: 0.3

Peak table for sample 8 : P15-0 Lib

Peak	Aligned Migration Time [s]	Size [bp]	Conc. [pg/μl]	Molarity [pmol/l]	Observations
1	43.00	35	125.00	5,411.3	Lower Marker
2	44.25	43	19.95	699.9	
3	83.24	517	56.87	166.7	
4	83.60	524	40.46	116.9	
5	86.78	592	17.29	44.2	
6	113.00	10,380	75.00	10.9	Upper Marker

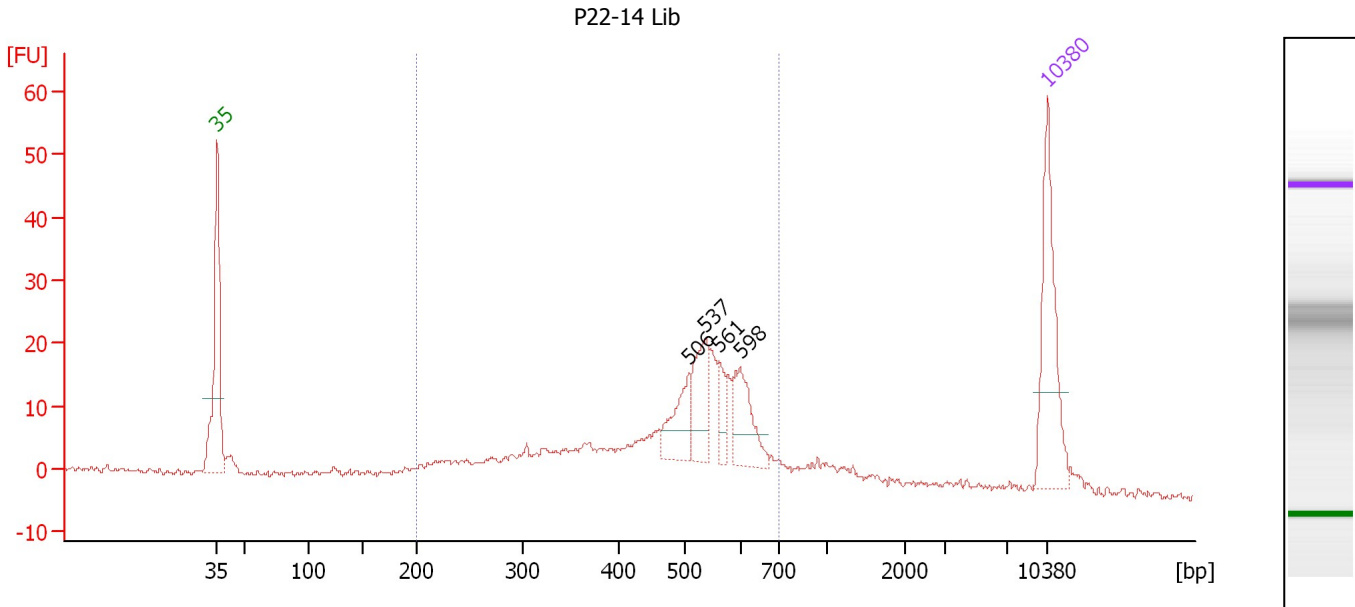
Region table for sample 8 : P15-0 Lib

From [bp]	To [bp]	Average Size [bp]	Molarity [pmol/l]	Conc. [pg/μl]	Corr. Area	% of Total	Size distribution in CV [%]	Color
201	669	473	1,004.5	275.39	218.4	79	23.6	Blue

Assay Class: High Sensitivity DNA Assay
 Data Path: C:\...ents and Settings\Bioanalyzer\2013-12-17\2013-12-17_003.xad

Created: 12/17/2013 4:41:51 PM
 Modified: 12/17/2013 5:30:56 PM

Electropherogram Summary Continued ...



Overall Results for sample 9 : P22-14 Lib

Number of peaks found: 4 Corr. Area 1: 307.8
 Noise: 0.5

Peak table for sample 9 : P22-14 Lib

Peak	Aligned Migration Time [s]	Size [bp]	Conc. [pg/μl]	Molarity [pmol/l]	Observations
1	43.00	35	125.00	5,411.3	Lower Marker
2	82.74	506	43.39	129.9	
3	84.18	537	51.03	144.0	
4	85.31	561	18.48	49.9	
5	87.06	598	47.99	121.5	
6	113.00	10,380	75.00	10.9	Upper Marker

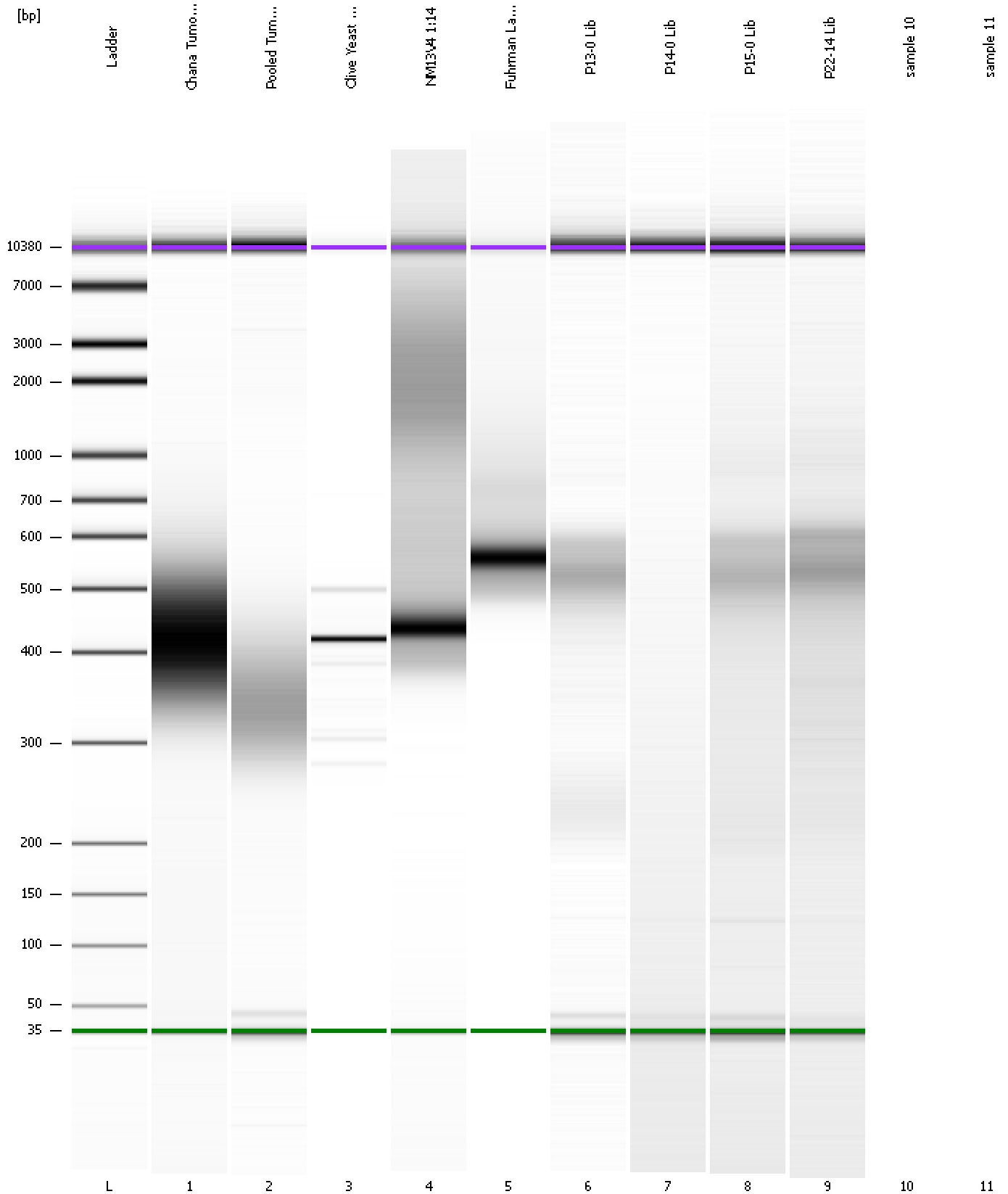
Region table for sample 9 : P22-14 Lib

From [bp]	To [bp]	Average Size [bp]	Molarity [pmol/l]	Conc. [pg/μl]	Corr. Area	% of Total	Size distribution in CV [%]	Color
200	701	473	1,817.7	495.81	307.8	79	25.3	Blue

Assay Class: High Sensitivity DNA Assay
Data Path: C:\...ents and Settings\Bioanalyzer\2013-12-17\2013-12-17_003.xad

Created: 12/17/2013 4:41:51 PM
Modified: 12/17/2013 5:30:56 PM

Gel Image



Assay Class: High Sensitivity DNA Assay
Data Path: C:\...ents and Settings\Bioanalyzer\2013-12-17\2013-12-17_003.xad

Created: 12/17/2013 4:41:51 PM
Modified: 12/17/2013 5:30:56 PM

Invalid Samples

Sample 10 has not been run, no results available.

Sample 11 has not been run, no results available.