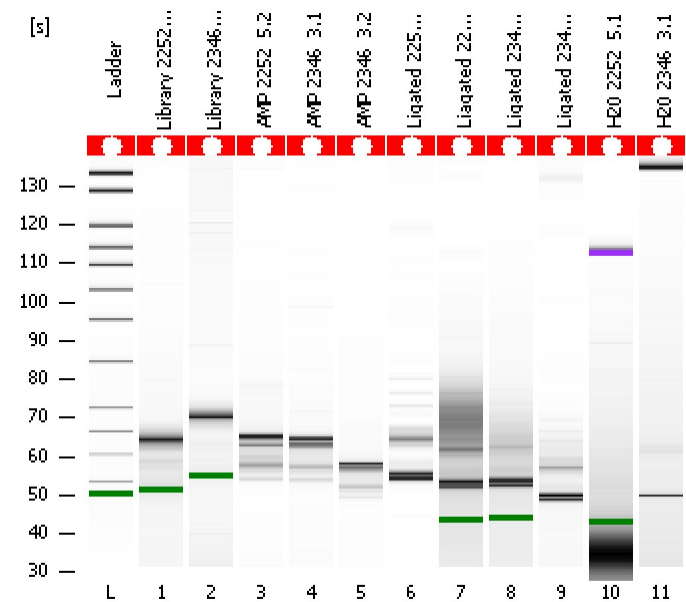


Assay Class: High Sensitivity DNA Assay
Data Path: C:\...ents and Settings\Bioanalyzer\2013-12-18\2013-12-18_005.xad

Created: 12/18/2013 3:37:30 PM
Modified: 12/18/2013 4:28:07 PM

Electrophoresis File Run Summary



Instrument Information:
 Instrument Name: DE13701086 Firmware: C.01.069
 Serial#: DE13701086 Type: G2938B

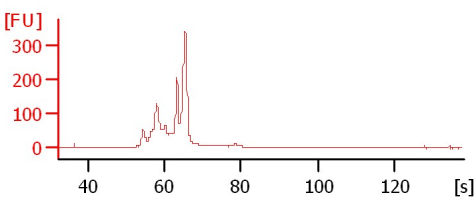
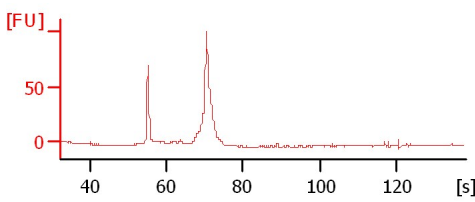
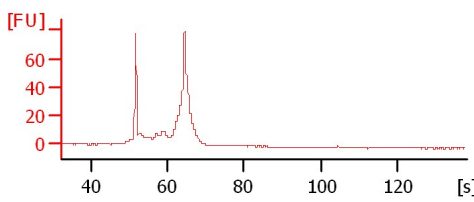
Assay Information:
 Assay Origin Path: C:\Program Files\Agilent\2100 bioanalyzer\2100 expert\assays\dsDNA\High Sensitivity DNA.xsy
 Assay Class: High Sensitivity DNA Assay
 Version: 1.03
 Assay Comments: Copyright © 2003-2010 Agilent Technologies

Chip Information:
 Chip Lot #:
 Reagent Kit Lot #:
 Chip Comments:

Library 2252_5.1

Library 2346_3.1

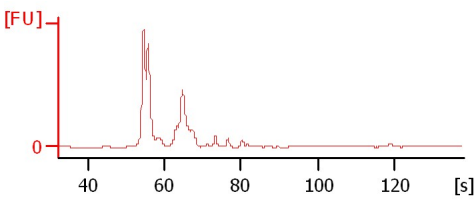
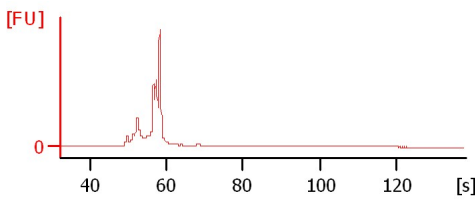
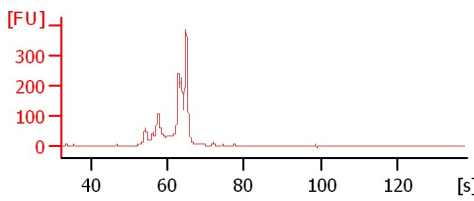
AMP 2252_5.2



AMP 2346_3.1

AMP 2346_3.2

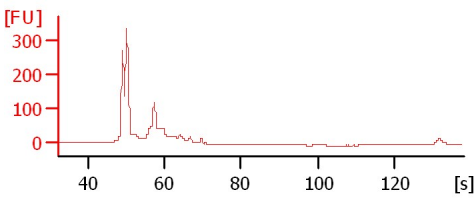
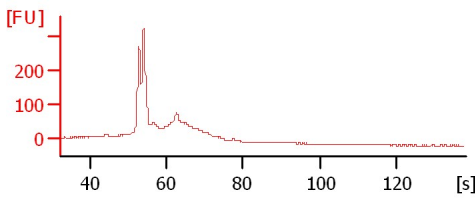
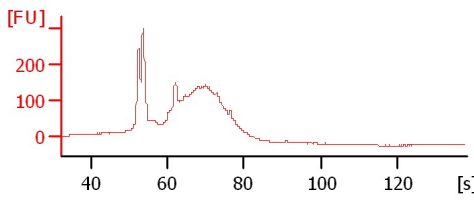
Ligated 2252_5.1



Ligated 2252_5.2

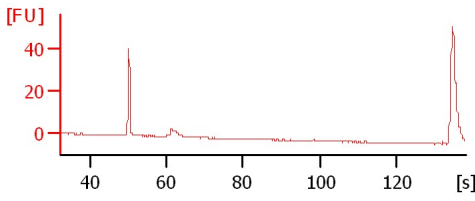
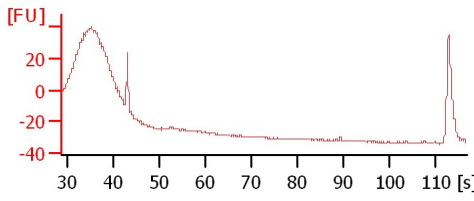
Ligated 2346_3.1

Ligated 2346_3.2



H2O 2252_5.1

H2O 2346_3.1



Assay Class: High Sensitivity DNA Assay
 Data Path: C:\...ents and Settings\Bioanalyzer\2013-12-18\2013-12-18_005.xad

Created: 12/18/2013 3:37:30 PM
 Modified: 12/18/2013 4:28:07 PM

Electrophoresis File Run Summary (Chip Summary)

Sample Name	Sample Comment	Rest. Digest	Status	Observation	Result Label	Result Color
Library 2252_5.1		<input type="checkbox"/>	✓			
Library 2346_3.1		<input type="checkbox"/>	✓			
AMP 2252_5.2		<input type="checkbox"/>	✓			
AMP 2346_3.1		<input type="checkbox"/>	✓			
AMP 2346_3.2		<input type="checkbox"/>	✓			
Ligated 2252_5.1		<input type="checkbox"/>	✓			
Liagated 2252_5.2		<input type="checkbox"/>	✓			
Ligated 2346_3.1		<input type="checkbox"/>	✓			
Ligated 2346_3.2		<input type="checkbox"/>	✓			
H2O 2252_5.1		<input type="checkbox"/>	✓			
H2O 2346_3.1		<input type="checkbox"/>	✓			
Ladder		<input type="checkbox"/>	✓			

Chip Lot #

Reagent Kit Lot #

Chip Comments :

Assay Class: High Sensitivity DNA Assay
 Data Path: C:\...ents and Settings\Bioanalyzer\2013-12-18\2013-12-18_005.xad

Created: 12/18/2013 3:37:30 PM
 Modified: 12/18/2013 4:28:07 PM

Electrophoresis Assay Details

General Analysis Settings

Number of Available Sample and Ladder Wells (Max.) : 12
 Minimum Visible Range [s] : 32
 Maximum Visible Range [s] : 138
 Start Analysis Time Range [s] : 33
 End Analysis Time Range [s] : 137.5
 Ladder Concentration [pg/μl] : 1950
 Uses Standard Area for Ladder Fragments
 Lower Marker Concentration [pg/μl] : 125
 Upper Marker Concentration [pg/μl] : 75
 Used Upper Marker for Quantitation
 Standard Curve Fit is Point to Point
 Show Data Aligned to Lower and Upper Marker

Integrator Settings

Integration Start Time [s] : 33.05
 Integration End Time [s] : 137
 Slope Threshold : 0.8
 Height Threshold [FU] : 5
 Area Threshold : 0.1
 Width Threshold [s] : 0.6
 Baseline Plateau [s] : 0.5

Filter Settings

Filter Width [s] : 0.5
 Polynomial Order : 4

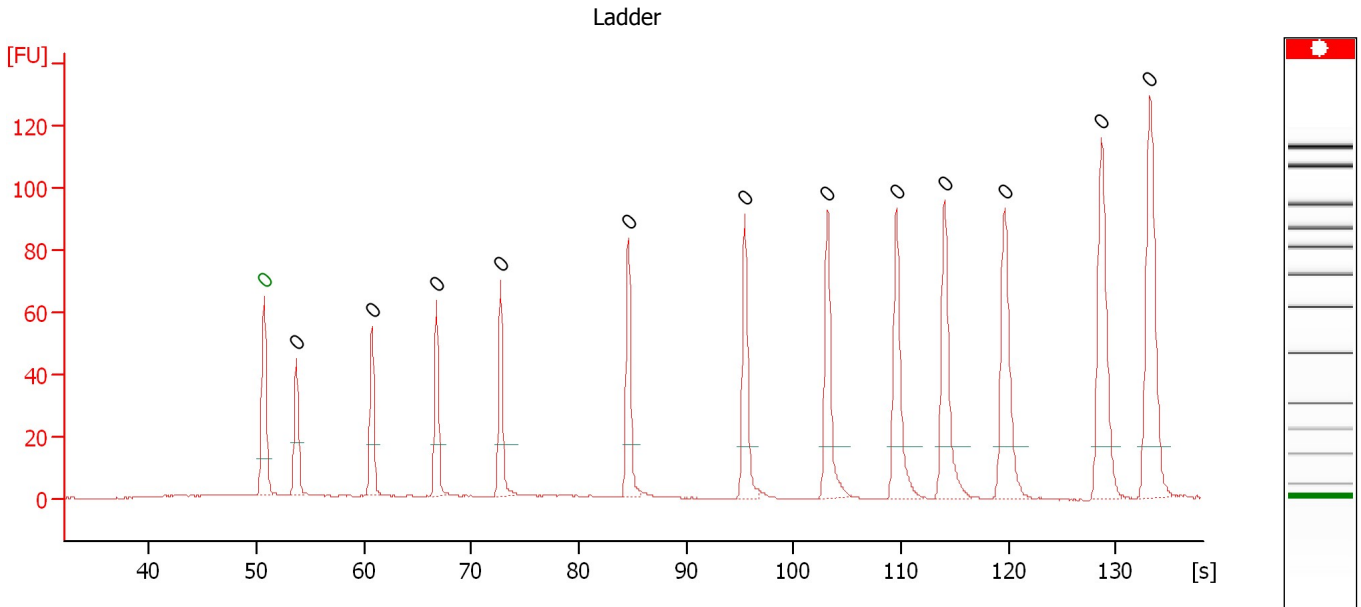
Ladder

Ladder Peak	Size	Area
1	35	160
2	50	210
3	100	208
4	150	221
5	200	242
6	300	270
7	400	305
8	500	306
9	600	336
10	700	321
11	1000	366
12	2000	413
13	3000	411
14	7000	400
15	10380	214

Assay Class: High Sensitivity DNA Assay
 Data Path: C:\...ents and Settings\Bioanalyzer\2013-12-18\2013-12-18_005.xad

Created: 12/18/2013 3:37:30 PM
 Modified: 12/18/2013 4:28:07 PM

Electropherogram Summary



Overall Results for Ladder

Noise: 0.2

Peak table for Ladder

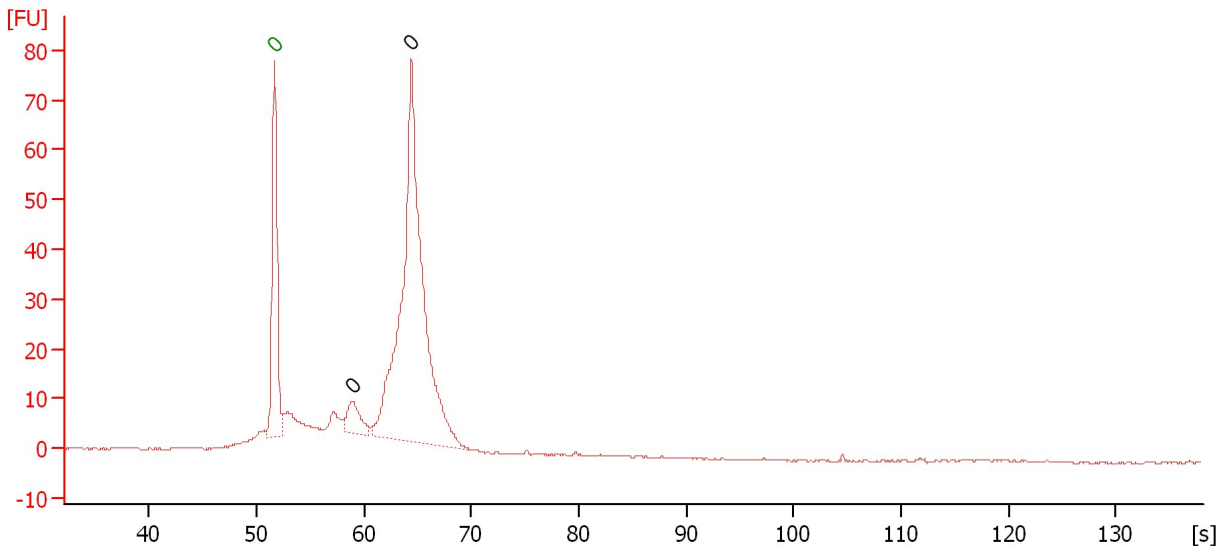
Peak	Aligned Migration Time [s]	Size [bp]	Conc. [pg/μl]	Molarity [pmol/l]	Observations
1	50.70	0	0.00	0.0	Lower Marker
2	53.70	0	0.00	0.0	Ladder Peak
3	60.75	0	0.00	0.0	Ladder Peak
4	66.75	0	0.00	0.0	Ladder Peak
5	72.70	0	0.00	0.0	Ladder Peak
6	84.60	0	0.00	0.0	Ladder Peak
7	95.45	0	0.00	0.0	Ladder Peak
8	103.15	0	0.00	0.0	Ladder Peak
9	109.55	0	0.00	0.0	Ladder Peak
10	114.05	0	0.00	0.0	Ladder Peak
11	119.65	0	0.00	0.0	Ladder Peak
12	128.65	0	0.00	0.0	Ladder Peak
13	133.20	0	0.00	0.0	Ladder Peak

Assay Class: High Sensitivity DNA Assay
 Data Path: C:\...ents and Settings\Bioanalyzer\2013-12-18\2013-12-18_005.xad

Created: 12/18/2013 3:37:30 PM
 Modified: 12/18/2013 4:28:07 PM

Electropherogram Summary Continued ...

Library 2252_5.1



Overall Results for sample 1 : Library 2252 5.1

Number of peaks found: 2 Noise: 0.2

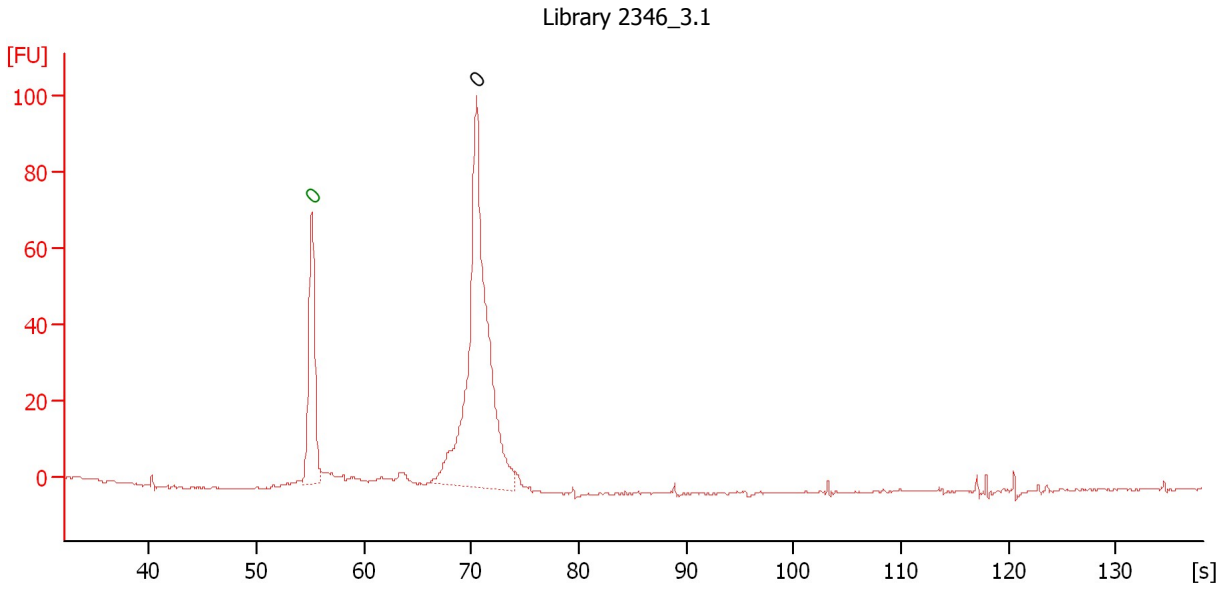
Peak table for sample 1 : Library 2252 5.1

Peak	Aligned Migration Time [s]	Size [bp]	Conc. [pg/μl]	Molarity [pmol/l]	Observations
1	51.70	0	0.00	0.0	Lower Marker
2	58.95	0	0.00	0.0	
3	64.40	0	0.00	0.0	

Assay Class: High Sensitivity DNA Assay
Data Path: C:\...ents and Settings\Bioanalyzer\2013-12-18\2013-12-18_005.xad

Created: 12/18/2013 3:37:30 PM
Modified: 12/18/2013 4:28:07 PM

Electropherogram Summary Continued ...



Overall Results for sample 2 : Library 2346 3.1

Number of peaks found: 1 Noise: 0.3

Peak table for sample 2 : Library 2346 3.1

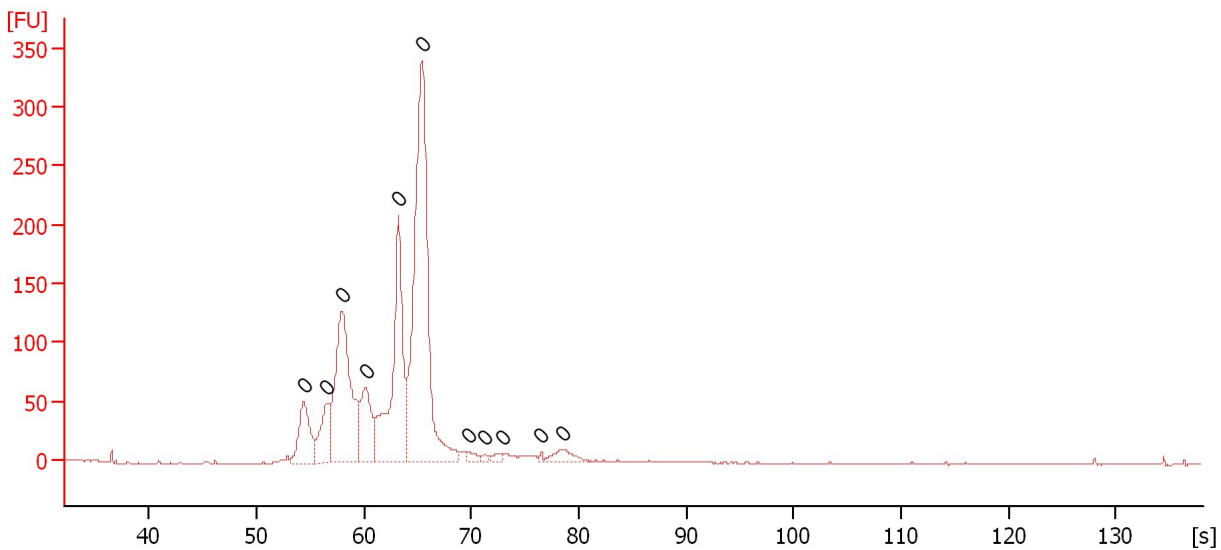
Peak	Aligned Migration Time [s]	Size [bp]	Conc. [pg/μl]	Molarity [pmol/l]	Observations
1	55.15	0	0.00	0.0	Lower Marker
2	70.50	0	0.00	0.0	

Assay Class: High Sensitivity DNA Assay
 Data Path: C:\...ents and Settings\Bioanalyzer\2013-12-18\2013-12-18_005.xad

Created: 12/18/2013 3:37:30 PM
 Modified: 12/18/2013 4:28:07 PM

Electropherogram Summary Continued ...

AMP 2252_5.2



Overall Results for sample 3 : AMP 2252_5.2

Number of peaks found: 0 Noise: 0.1

Peak table for sample 3 : AMP 2252_5.2

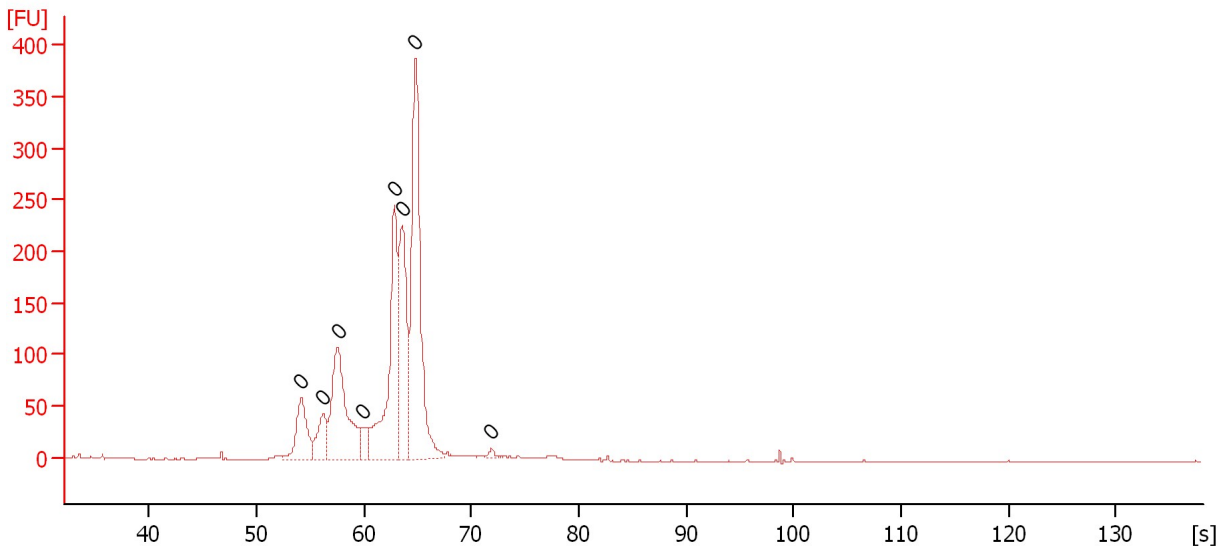
Peak	Aligned Migration Time [s]	Size [bp]	Conc. [pg/μl]	Molarity [pmol/l]	Observations
1	54.40	0	0.00	0.0	
2	56.55	0	0.00	0.0	
3	57.95	0	0.00	0.0	
4	60.15	0	0.00	0.0	
5	63.20	0	0.00	0.0	
6	65.40	0	0.00	0.0	
7	69.65	0	0.00	0.0	
8	71.20	0	0.00	0.0	
9	72.85	0	0.00	0.0	
10	76.50	0	0.00	0.0	
11	78.45	0	0.00	0.0	

Assay Class: High Sensitivity DNA Assay
Data Path: C:\...ents and Settings\Bioanalyzer\2013-12-18\2013-12-18_005.xad

Created: 12/18/2013 3:37:30 PM
Modified: 12/18/2013 4:28:07 PM

Electropherogram Summary Continued ...

AMP 2346_3.1



Overall Results for sample 4 : AMP 2346 3.1

Number of peaks found: 0 Noise: 0.2

Peak table for sample 4 : AMP 2346 3.1

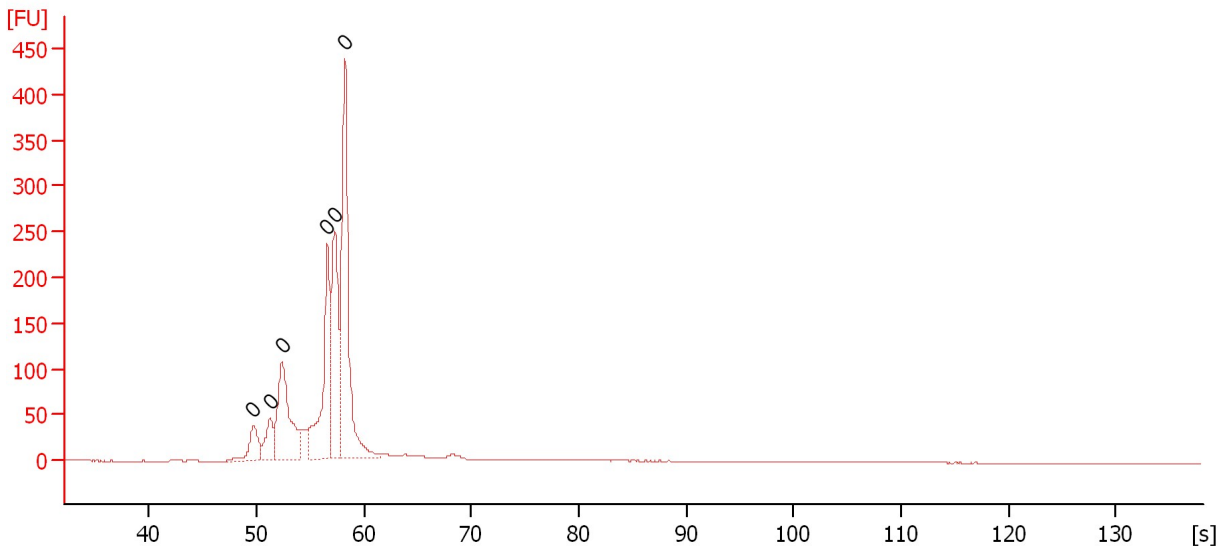
Peak	Aligned Migration Time [s]	Size [bp]	Conc. [pg/μl]	Molarity [pmol/l]	Observations
1	54.15	0	0.00	0.0	
2	56.20	0	0.00	0.0	
3	57.55	0	0.00	0.0	
4	59.95	0	0.00	0.0	
5	62.85	0	0.00	0.0	
6	63.55	0	0.00	0.0	
7	64.80	0	0.00	0.0	
8	71.85	0	0.00	0.0	

Assay Class: High Sensitivity DNA Assay
Data Path: C:\...ents and Settings\Bioanalyzer\2013-12-18\2013-12-18_005.xad

Created: 12/18/2013 3:37:30 PM
Modified: 12/18/2013 4:28:07 PM

Electropherogram Summary Continued ...

AMP 2346_3.2



Overall Results for sample 5 : AMP 2346 3.2

Number of peaks found: 0 Noise: 0.1

Peak table for sample 5 : AMP 2346 3.2

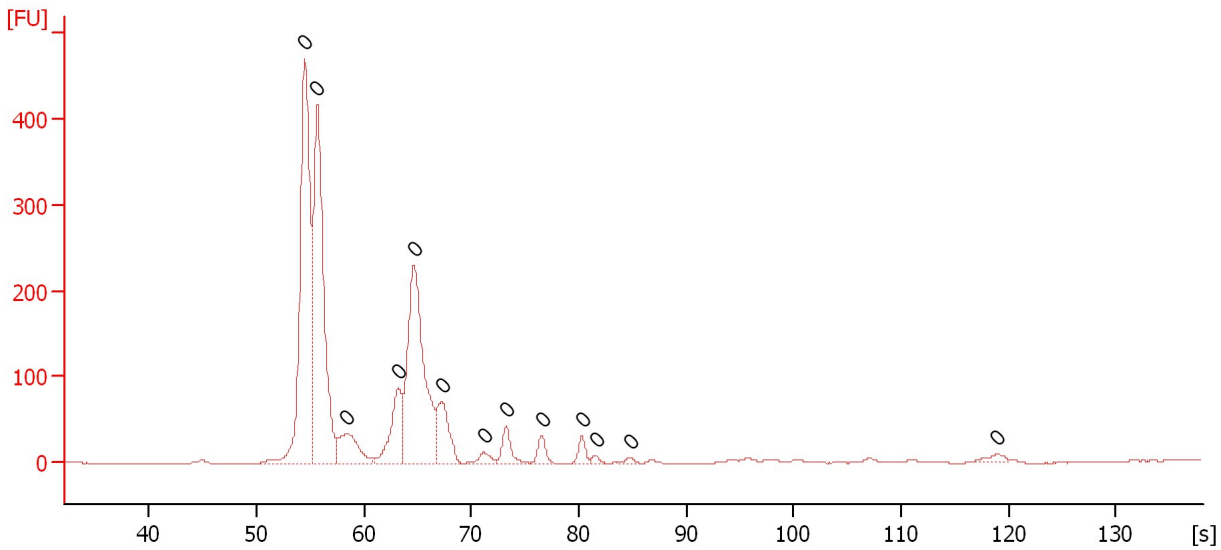
Peak	Aligned Migration Time [s]	Size [bp]	Conc. [pg/μl]	Molarity [pmol/l]	Observations
1	49.70	0	0.00	0.0	
2	51.25	0	0.00	0.0	
3	52.40	0	0.00	0.0	
4	56.60	0	0.00	0.0	
5	57.25	0	0.00	0.0	
6	58.25	0	0.00	0.0	

Assay Class: High Sensitivity DNA Assay
Data Path: C:\...ents and Settings\Bioanalyzer\2013-12-18\2013-12-18_005.xad

Created: 12/18/2013 3:37:30 PM
Modified: 12/18/2013 4:28:07 PM

Electropherogram Summary Continued ...

Ligated 2252_5.1



Overall Results for sample 6 : Ligated 2252_5.1

Number of peaks found: 0 Noise: 0.2

Peak table for sample 6 : Ligated 2252_5.1

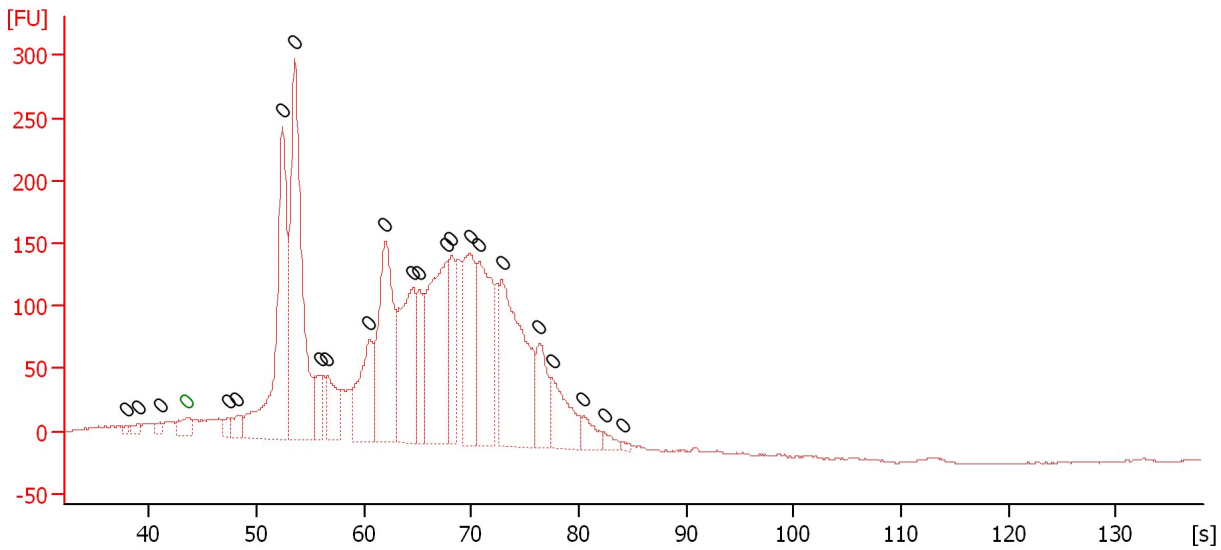
Peak	Aligned Migration Time [s]	Size [bp]	Conc. [pg/μl]	Molarity [pmol/l]	Observations
1	54.50	0	0.00	0.0	
2	55.65	0	0.00	0.0	
3	58.35	0	0.00	0.0	
4	63.20	0	0.00	0.0	
5	64.65	0	0.00	0.0	
6	67.25	0	0.00	0.0	
7	71.15	0	0.00	0.0	
8	73.25	0	0.00	0.0	
9	76.55	0	0.00	0.0	
10	80.30	0	0.00	0.0	
11	81.60	0	0.00	0.0	
12	84.80	0	0.00	0.0	
13	118.95	0	0.00	0.0	

Assay Class: High Sensitivity DNA Assay
 Data Path: C:\...ents and Settings\Bioanalyzer\2013-12-18\2013-12-18_005.xad

Created: 12/18/2013 3:37:30 PM
 Modified: 12/18/2013 4:28:07 PM

Electropherogram Summary Continued ...

Liagated 2252_5.2



Overall Results for sample 7 : Liagated 2252 5.2

Number of peaks found: 23 Noise: 0.5

Peak table for sample 7 : Liagated 2252 5.2

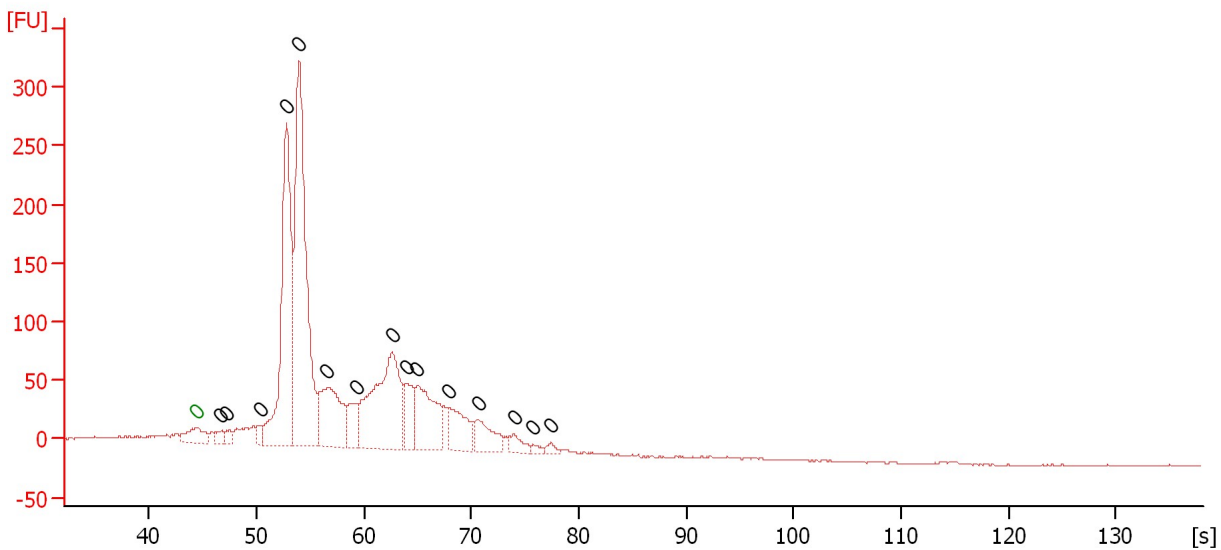
Peak	Aligned Migration Time [s]	Size [bp]	Conc. [pg/μl]	Molarity [pmol/l]	Observations
1	37.80	0	0.00	0.0	
2	38.90	0	0.00	0.0	
3	41.00	0	0.00	0.0	
4	43.50	0	0.00	0.0	Lower Marker
5	47.35	0	0.00	0.0	
6	48.10	0	0.00	0.0	
7	52.40	0	0.00	0.0	
8	53.55	0	0.00	0.0	
9	55.90	0	0.00	0.0	
10	56.60	0	0.00	0.0	
11	60.50	0	0.00	0.0	
12	62.00	0	0.00	0.0	
13	64.55	0	0.00	0.0	
14	65.15	0	0.00	0.0	
15	67.70	0	0.00	0.0	
16	68.15	0	0.00	0.0	
17	69.90	0	0.00	0.0	
18	70.70	0	0.00	0.0	
19	72.85	0	0.00	0.0	
20	76.35	0	0.00	0.0	
21	77.50	0	0.00	0.0	
22	80.45	0	0.00	0.0	
23	82.40	0	0.00	0.0	
24	84.05	0	0.00	0.0	

Assay Class: High Sensitivity DNA Assay
 Data Path: C:\...ents and Settings\Bioanalyzer\2013-12-18\2013-12-18_005.xad

Created: 12/18/2013 3:37:30 PM
 Modified: 12/18/2013 4:28:07 PM

Electropherogram Summary Continued ...

Ligated 2346_3.1



Overall Results for sample 8 : Ligated 2346 3.1

Number of peaks found: 15 Noise: 0.5

Peak table for sample 8 : Ligated 2346 3.1

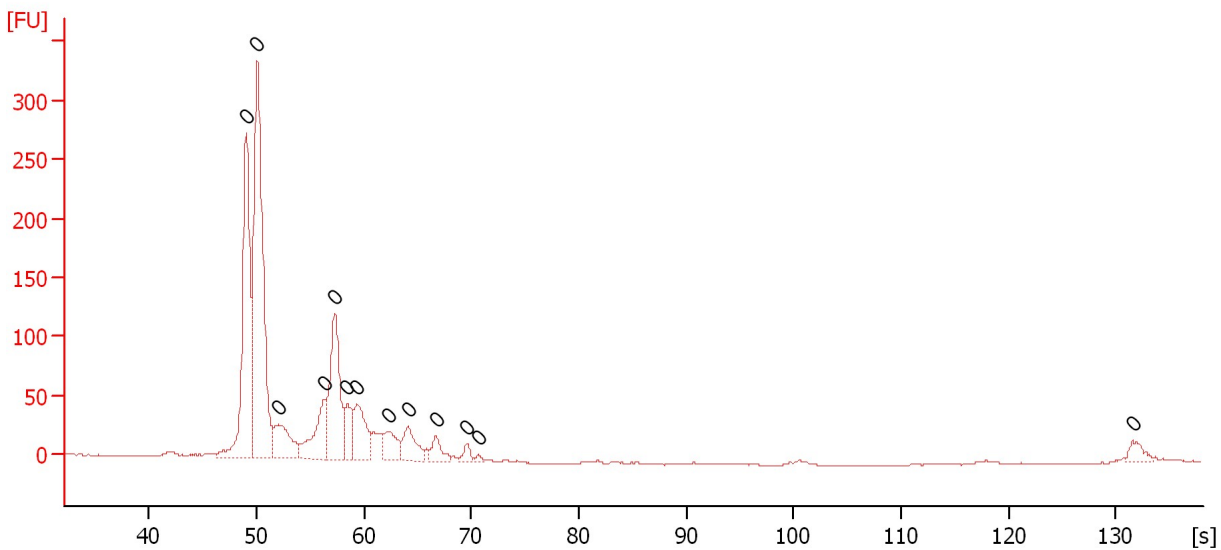
Peak	Aligned Migration Time [s]	Size [bp]	Conc. [pg/μl]	Molarity [pmol/l]	Observations
1	44.45	0	0.00	0.0	Lower Marker
2	46.70	0	0.00	0.0	
3	47.25	0	0.00	0.0	
4	50.30	0	0.00	0.0	
5	52.80	0	0.00	0.0	
6	53.95	0	0.00	0.0	
7	56.60	0	0.00	0.0	
8	59.30	0	0.00	0.0	
9	62.65	0	0.00	0.0	
10	63.95	0	0.00	0.0	
11	64.95	0	0.00	0.0	
12	67.95	0	0.00	0.0	
13	70.60	0	0.00	0.0	
14	73.95	0	0.00	0.0	
15	75.70	0	0.00	0.0	
16	77.45	0	0.00	0.0	

Assay Class: High Sensitivity DNA Assay
 Data Path: C:\...ents and Settings\Bioanalyzer\2013-12-18\2013-12-18_005.xad

Created: 12/18/2013 3:37:30 PM
 Modified: 12/18/2013 4:28:07 PM

Electropherogram Summary Continued ...

Ligated 2346_3.2



Overall Results for sample 9 : Ligated 2346 3.2

Number of peaks found: 0 Noise: 0.4

Peak table for sample 9 : Ligated 2346 3.2

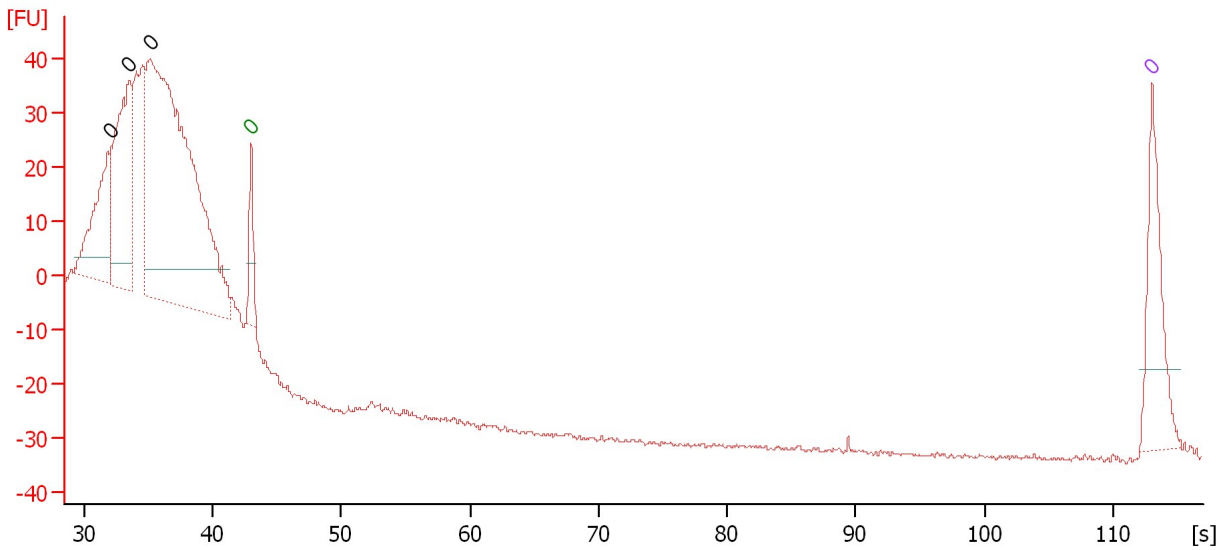
Peak	Aligned Migration Time [s]	Size [bp]	Conc. [pg/μl]	Molarity [pmol/l]	Observations
1	49.05	0	0.00	0.0	
2	50.05	0	0.00	0.0	
3	52.05	0	0.00	0.0	
4	56.25	0	0.00	0.0	
5	57.25	0	0.00	0.0	
6	58.45	0	0.00	0.0	
7	59.35	0	0.00	0.0	
8	62.35	0	0.00	0.0	
9	64.10	0	0.00	0.0	
10	66.70	0	0.00	0.0	
11	69.60	0	0.00	0.0	
12	70.60	0	0.00	0.0	
13	131.55	0	0.00	0.0	

Assay Class: High Sensitivity DNA Assay
 Data Path: C:\...ents and Settings\Bioanalyzer\2013-12-18\2013-12-18_005.xad

Created: 12/18/2013 3:37:30 PM
 Modified: 12/18/2013 4:28:07 PM

Electropherogram Summary Continued ...

H20 2252_5.1



Overall Results for sample 10 : H20 2252 5.1

Number of peaks found: 3 Noise: 0.4

Peak table for sample 10 : H20 2252 5.1

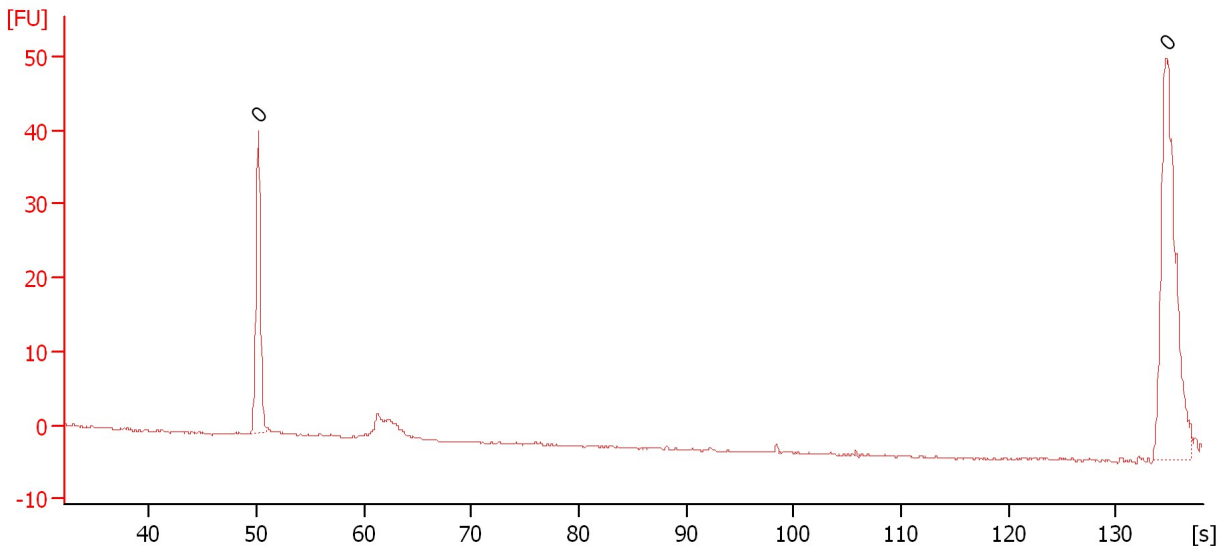
Peak	Aligned Migration Time [s]	Size [bp]	Conc. [pg/μl]	Molarity [pmol/l]	Observations
1	32.02	0	0.00	0.0	
2	33.52	0	0.00	0.0	
3	35.15	0	0.00	0.0	
4	43.00	0	0.00	0.0	Lower Marker
5	113.00	0	0.00	0.0	Upper Marker

Assay Class: High Sensitivity DNA Assay
Data Path: C:\...ents and Settings\Bioanalyzer\2013-12-18\2013-12-18_005.xad

Created: 12/18/2013 3:37:30 PM
Modified: 12/18/2013 4:28:07 PM

Electropherogram Summary Continued ...

H2O 2346_3.1



Overall Results for sample 11 : H2O 2346 3.1

Number of peaks found: 0 Noise: 0.1

Peak table for sample 11 : H2O 2346 3.1

Peak	Aligned Migration Time [s]	Size [bp]	Conc. [pg/μl]	Molarity [pmol/l]	Observations
1	50.15	0	0.00	0.0	
2	134.75	0	0.00	0.0	

Assay Class: High Sensitivity DNA Assay
Data Path: C:\...ents and Settings\Bioanalyzer\2013-12-18\2013-12-18_005.xad

Created: 12/18/2013 3:37:30 PM
Modified: 12/18/2013 4:28:07 PM

Gel Image

