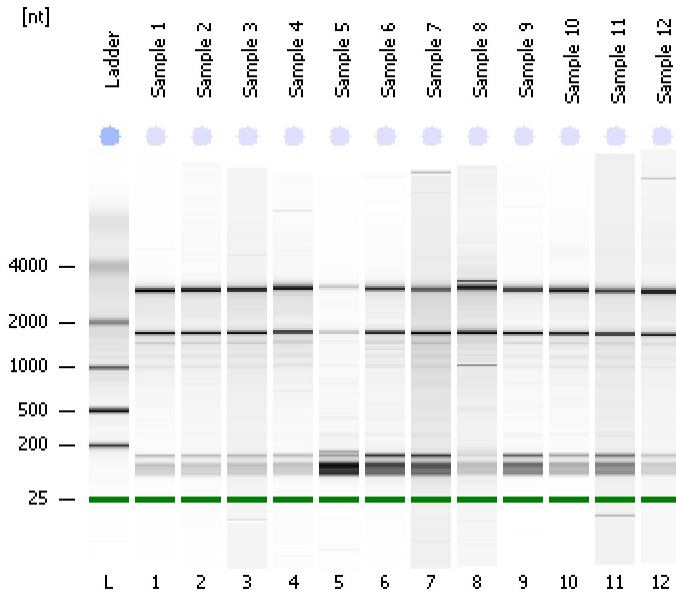


Assay Class: Eukaryote Total RNA Nano
Data Path: C:\...ents and Settings\Bioanalyzer\2013-12-18\2013-12-18_004.xad

Created: 12/18/2013 2:33:52 PM
Modified: 12/18/2013 3:07:39 PM

Electrophoresis File Run Summary



Instrument Information:

Instrument Name: DE13701086 Firmware: C.01.069
Serial#: DE13701086 Type: G2938B

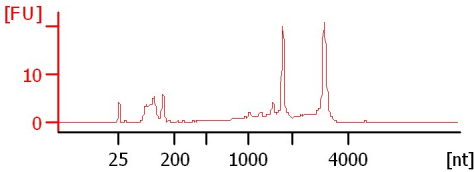
Assay Information:

Assay Origin Path: C:\Program Files\Agilent\2100 bioanalyzer\2100 expert\assays\RNA\Eukaryote Total RNA Nano Series II.xsy
Assay Class: Eukaryote Total RNA Nano
Version: 2.6
Assay Comments: Total RNA Analysis ng sensitivity (Eukaryote)
© Copyright 2003 - 2009 Agilent Technologies, Inc.

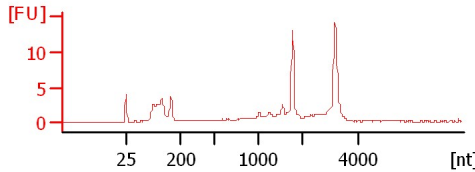
Chip Information:

Chip Lot #:
Reagent Kit Lot #:
Chip Comments:

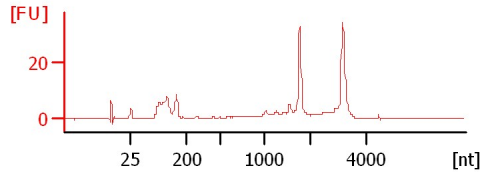
Sample 1
RIN: 7.50



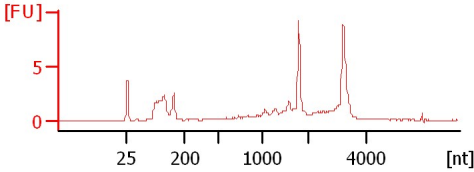
Sample 2
RIN: 7.60



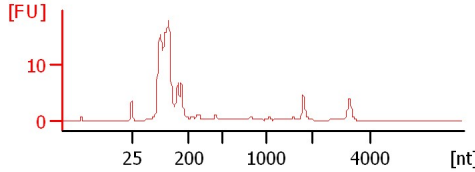
Sample 3
RIN: 8.10



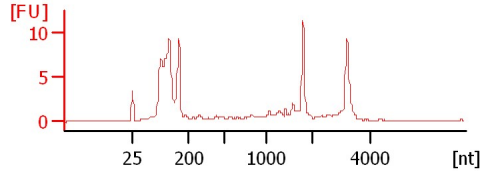
Sample 4
RIN: 7.50



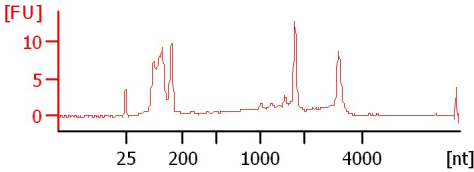
Sample 5
RIN: 3.50



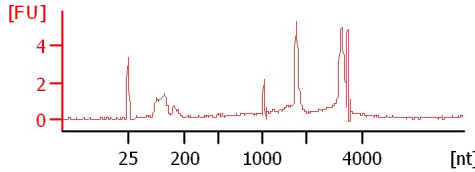
Sample 6
RIN: 7.10



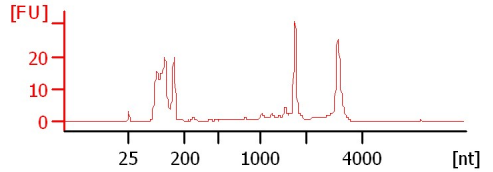
Sample 7
RIN: 6.60



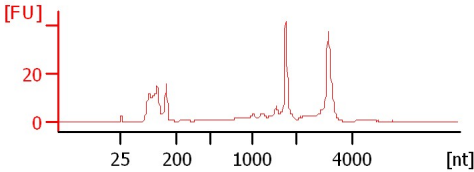
Sample 8
RIN: 6.50



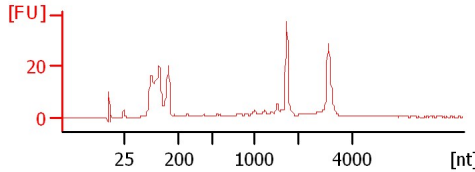
Sample 9
RIN: 8.10



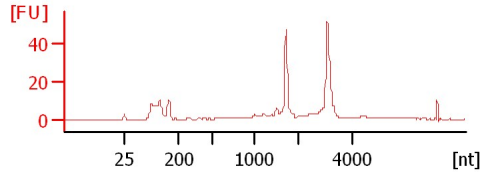
Sample 10
RIN: 7.80



Sample 11
RIN: 8



Sample 12
RIN: 8.60



Assay Class: Eukaryote Total RNA Nano
 Data Path: C:\...ents and Settings\Bioanalyzer\2013-12-18\2013-12-18_004.xad

Created: 12/18/2013 2:33:52 PM
 Modified: 12/18/2013 3:07:39 PM

Electrophoresis File Run Summary (Chip Summary)

Sample Name	Sample Comment	Status	Result Label	Result Color
Sample 1		✓	RIN: 7.50	
Sample 2		✓	RIN: 7.60	
Sample 3		✓	RIN: 8.10	
Sample 4		✓	RIN: 7.50	
Sample 5		✓	RIN: 3.50	
Sample 6		✓	RIN: 7.10	
Sample 7		✓	RIN: 6.60	
Sample 8		✓	RIN: 6.50	
Sample 9		✓	RIN: 8.10	
Sample 10		✓	RIN: 7.80	
Sample 11		✓	RIN:8	
Sample 12		✓	RIN: 8.60	
Ladder		✓	All Other Samples	

Chip Lot #

Reagent Kit Lot #

Chip Comments :

Assay Class: Eukaryote Total RNA Nano
Data Path: C:\...ents and Settings\Bioanalyzer\2013-12-18\2013-12-18_004.xad

Created: 12/18/2013 2:33:52 PM
Modified: 12/18/2013 3:07:39 PM

Electrophoresis Assay Details

General Analysis Settings

Number of Available Sample and Ladder Wells (Max.) : 13
Minimum Visible Range [s] : 17
Maximum Visible Range [s] : 70
Start Analysis Time Range [s] : 19
End Analysis Time Range [s] : 69
Ladder Concentration [ng/μl] : 150
Lower Marker Concentration [ng/μl] : 0
Upper Marker Concentration [ng/μl] : 0
Used Lower Marker for Quantitation
Standard Curve Fit is Logarithmic
Show Data Aligned to Lower Marker

Integrator Settings

Integration Start Time [s] : 19
Integration End Time [s] : 69
Slope Threshold : 0.6
Height Threshold [FU] : 0.5
Area Threshold : 0.2
Width Threshold [s] : 0.5
Baseline Plateau [s] : 6

Filter Settings

Filter Width [s] : 0.5
Polynomial Order : 4

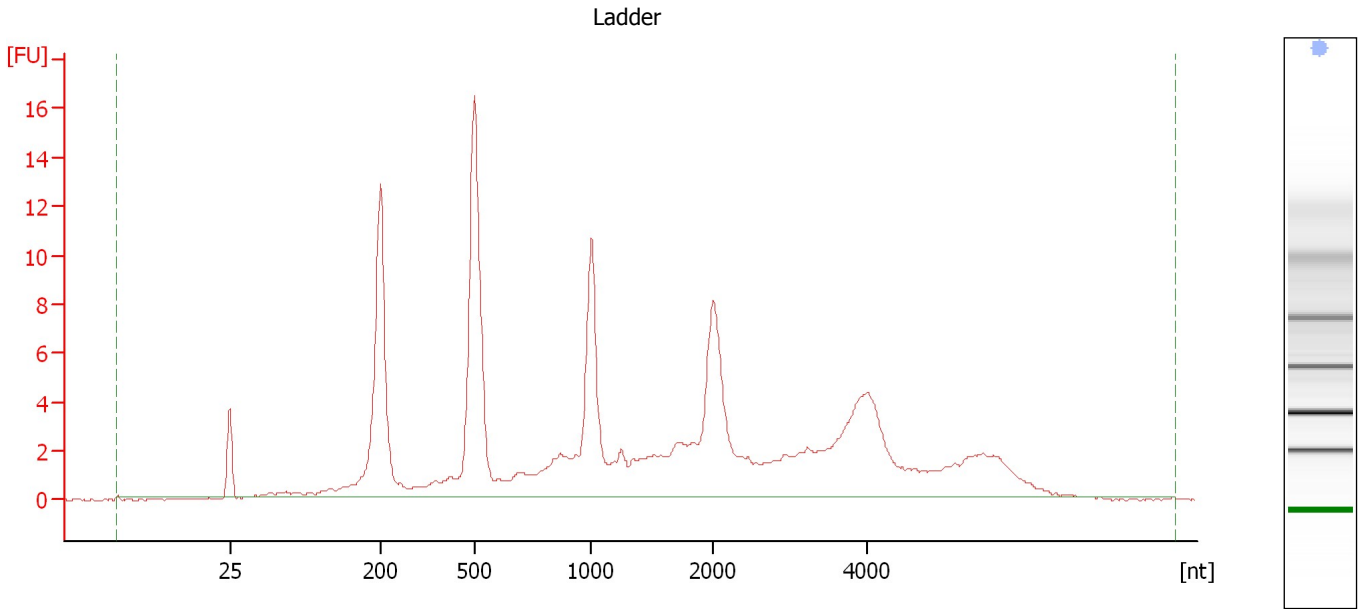
Ladder

Ladder Peak	Size
1	25
2	200
3	500
4	1000
5	2000
6	4000

Assay Class: Eukaryote Total RNA Nano
Data Path: C:\...ents and Settings\Bioanalyzer\2013-12-18\2013-12-18_004.xad

Created: 12/18/2013 2:33:52 PM
Modified: 12/18/2013 3:07:39 PM

Electropherogram Summary



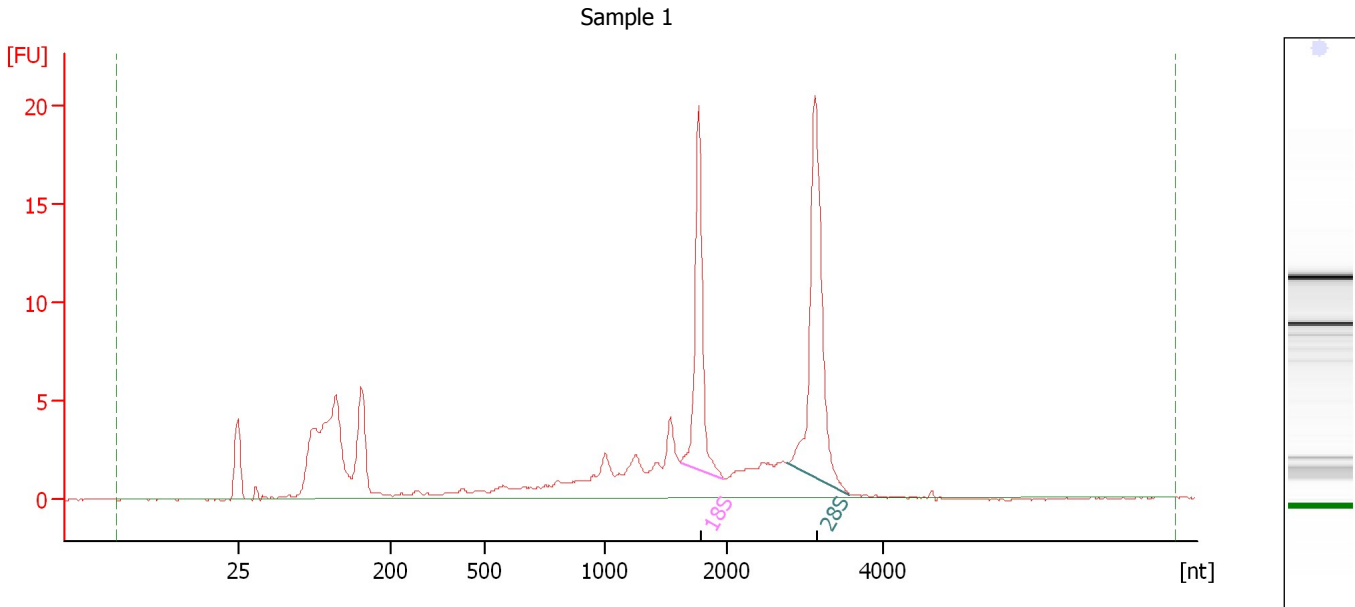
Overall Results for Ladder

RNA Area:	165.1	Result Flagging Color:	
RNA Concentration:	150 ng/μl	Result Flagging Label:	All Other Samples

Assay Class: Eukaryote Total RNA Nano
 Data Path: C:\...ents and Settings\Bioanalyzer\2013-12-18\2013-12-18_004.xad

Created: 12/18/2013 2:33:52 PM
 Modified: 12/18/2013 3:07:39 PM

Electropherogram Summary Continued ...



Overall Results for sample 1 : Sample 1

RNA Area:	126.9	RNA Integrity Number (RIN):	7.5 (B.02.08)
RNA Concentration:	115 ng/μl	Result Flagging Color:	
rRNA Ratio [28s / 18s]:	1.5	Result Flagging Label:	RIN: 7.50

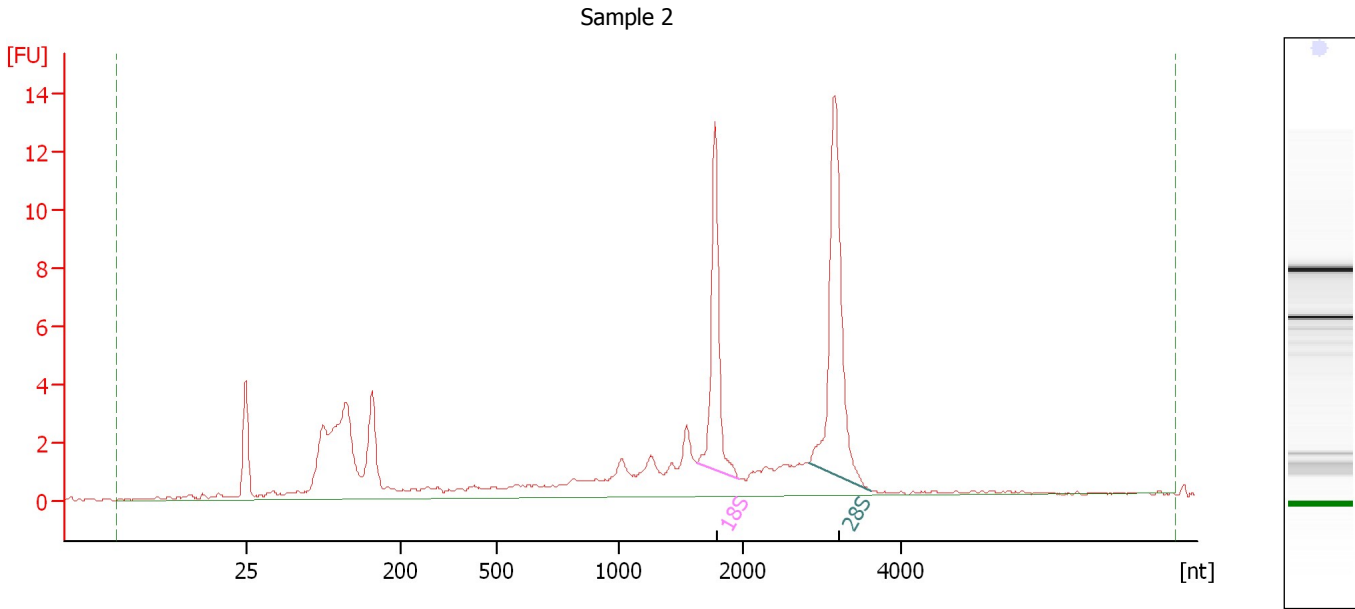
Fragment table for sample 1 : Sample 1

Name	Start Size [nt]	End Size [nt]	Area	% of total Area
18S	1,616	1,970	16.4	12.9
28S	2,767	3,580	23.8	18.7

Assay Class: Eukaryote Total RNA Nano
Data Path: C:\...ents and Settings\Bioanalyzer\2013-12-18\2013-12-18_004.xad

Created: 12/18/2013 2:33:52 PM
Modified: 12/18/2013 3:07:39 PM

Electropherogram Summary Continued ...



Overall Results for sample 2 : Sample 2

RNA Area:	88.7	RNA Integrity Number (RIN):	7.6 (B.02.08)
RNA Concentration:	81 ng/μl	Result Flagging Color:	
rRNA Ratio [28s / 18s]:	1.5	Result Flagging Label:	RIN: 7.60

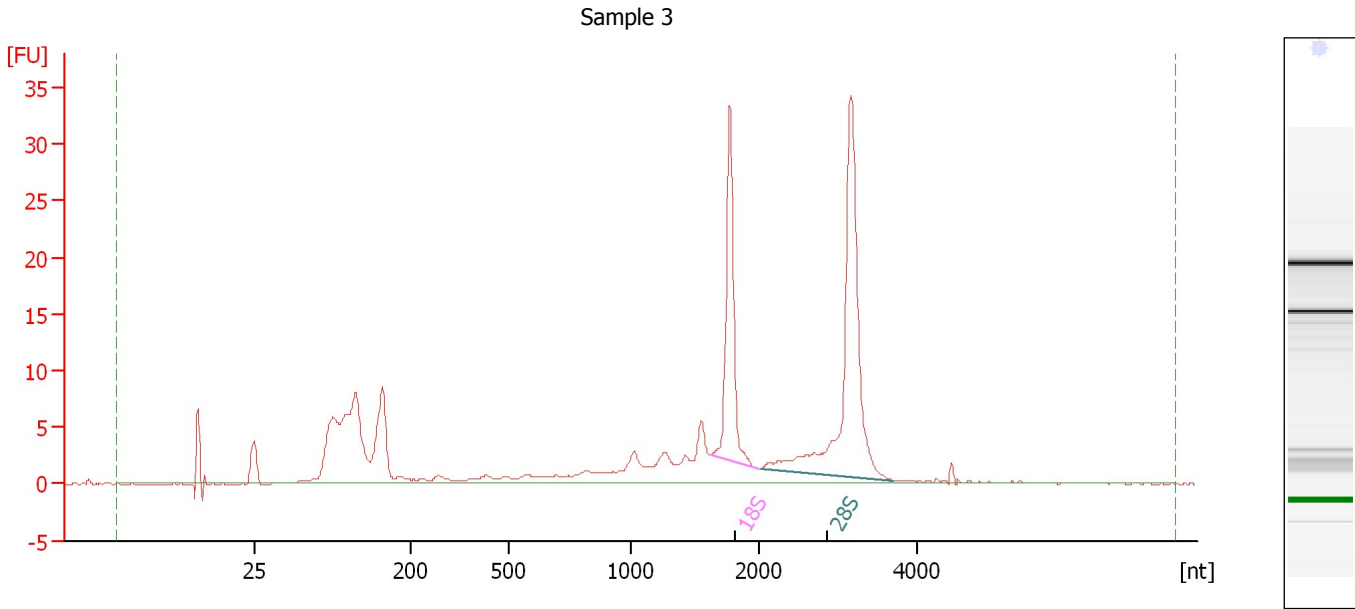
Fragment table for sample 2 : Sample 2

Name	Start Size [nt]	End Size [nt]	Area	% of total Area
18S	1,619	1,968	10.5	11.9
28S	2,819	3,619	15.8	17.8

Assay Class: Eukaryote Total RNA Nano
 Data Path: C:\...ents and Settings\Bioanalyzer\2013-12-18\2013-12-18_004.xad

Created: 12/18/2013 2:33:52 PM
 Modified: 12/18/2013 3:07:39 PM

Electropherogram Summary Continued ...



Overall Results for sample 3 : Sample 3

RNA Area:	194.7	RNA Integrity Number (RIN):	8.1 (B.02.08)
RNA Concentration:	177 ng/μl	Result Flagging Color:	
rRNA Ratio [28s / 18s]:	1.8	Result Flagging Label:	RIN: 8.10

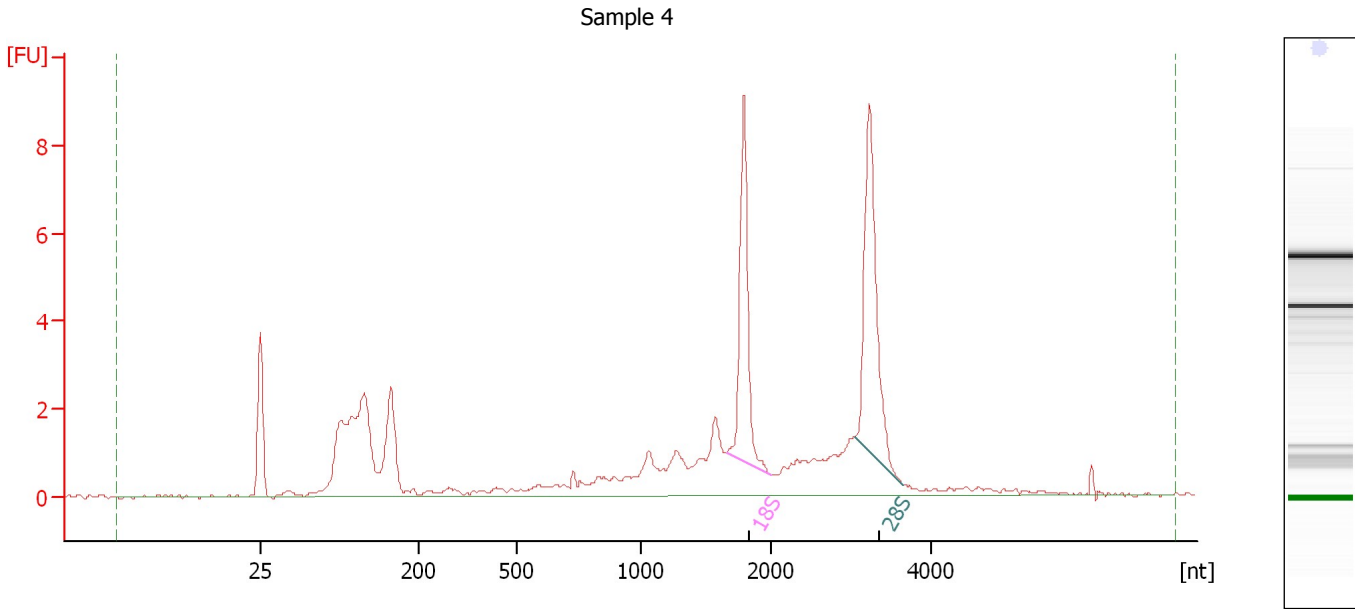
Fragment table for sample 3 : Sample 3

Name	Start Size [nt]	End Size [nt]	Area	% of total Area
18S	1,621	1,999	26.8	13.8
28S	2,026	3,700	48.8	25.1

Assay Class: Eukaryote Total RNA Nano
Data Path: C:\...ents and Settings\Bioanalyzer\2013-12-18\2013-12-18_004.xad

Created: 12/18/2013 2:33:52 PM
Modified: 12/18/2013 3:07:39 PM

Electropherogram Summary Continued ...



Overall Results for sample 4 : Sample 4

RNA Area:	59.1	RNA Integrity Number (RIN):	7.5 (B.02.08)
RNA Concentration:	54 ng/μl	Result Flagging Color:	
rRNA Ratio [28s / 18s]:	1.3	Result Flagging Label:	RIN: 7.50

Fragment table for sample 4 : Sample 4

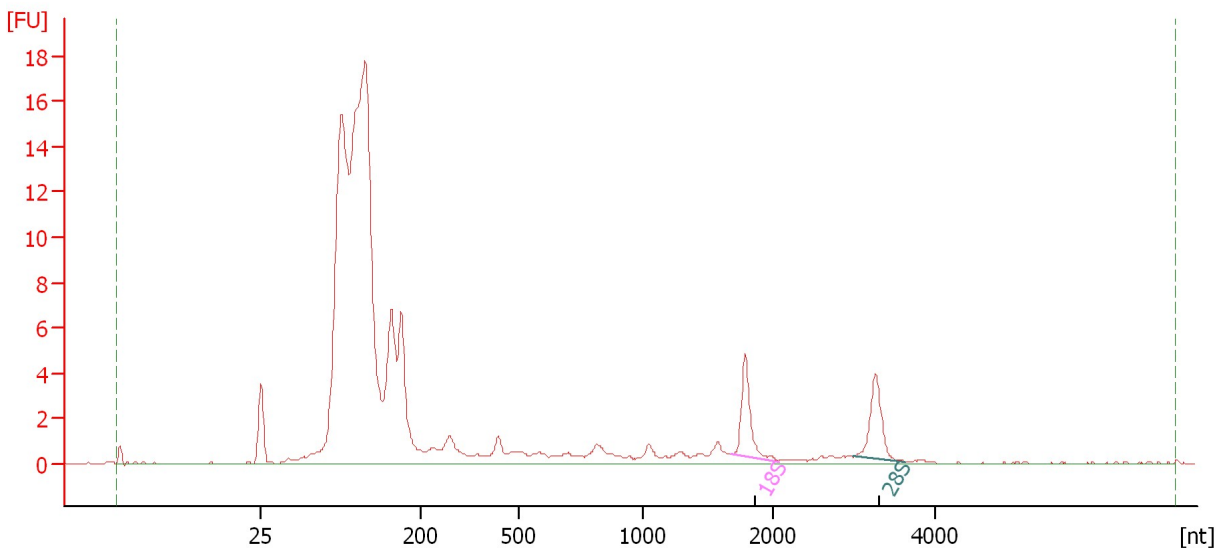
Name	Start Size [nt]	End Size [nt]	Area	% of total Area
18S	1,655	2,006	7.2	12.2
28S	3,039	3,634	9.2	15.6

Assay Class: Eukaryote Total RNA Nano
 Data Path: C:\...ents and Settings\Bioanalyzer\2013-12-18\2013-12-18_004.xad

Created: 12/18/2013 2:33:52 PM
 Modified: 12/18/2013 3:07:39 PM

Electropherogram Summary Continued ...

Sample 5



Overall Results for sample 5 : Sample 5

RNA Area:	147.4	RNA Integrity Number (RIN):	3.5 (B.02.08, Anomaly Threshold(s) manually adapted)
RNA Concentration:	134 ng/μl	Result Flagging Color:	
rRNA Ratio [28s / 18s]:	1.0	Result Flagging Label:	RIN: 3.50

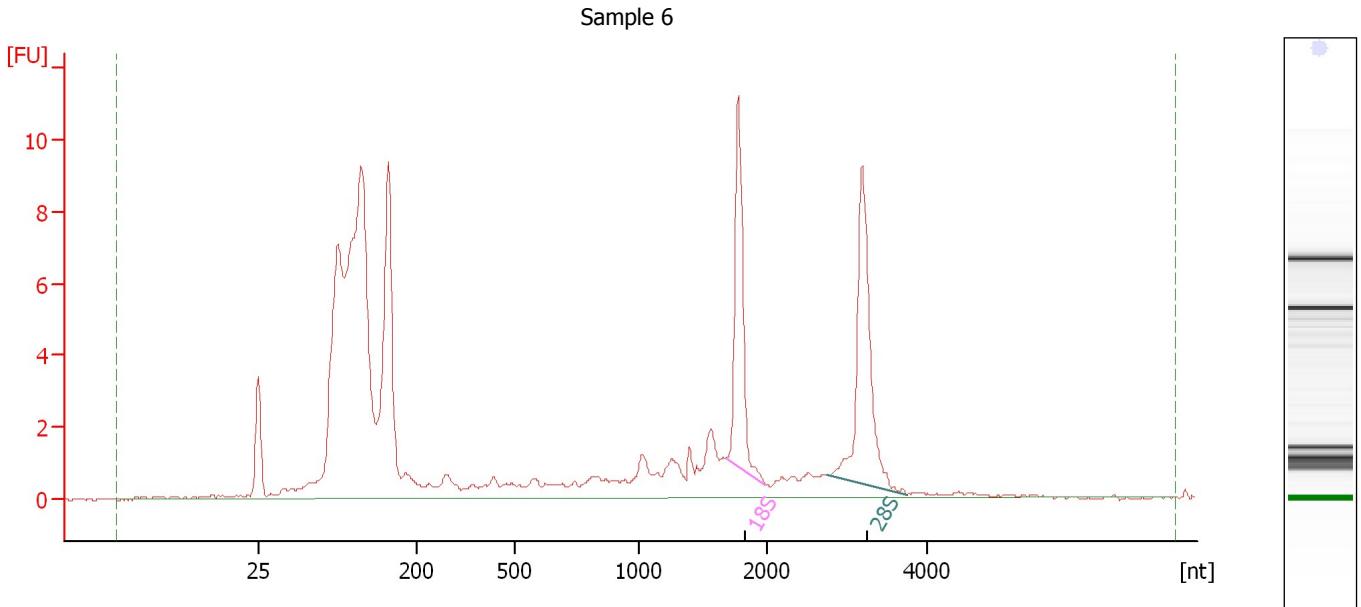
Fragment table for sample 5 : Sample 5

Name	Start Size [nt]	End Size [nt]	Area	% of total Area
18S	1,673	2,073	4.3	2.9
28S	2,985	3,632	4.3	2.9

Assay Class: Eukaryote Total RNA Nano
 Data Path: C:\...ents and Settings\Bioanalyzer\2013-12-18\2013-12-18_004.xad

Created: 12/18/2013 2:33:52 PM
 Modified: 12/18/2013 3:07:39 PM

Electropherogram Summary Continued ...



Overall Results for sample 6 : Sample 6

RNA Area:	116.0	RNA Integrity Number (RIN):	7.1 (B.02.08, Anomaly Threshold(s) manually adapted)
RNA Concentration:	105 ng/μl	Result Flagging Color:	
rRNA Ratio [28s / 18s]:	1.3	Result Flagging Label:	RIN: 7.10

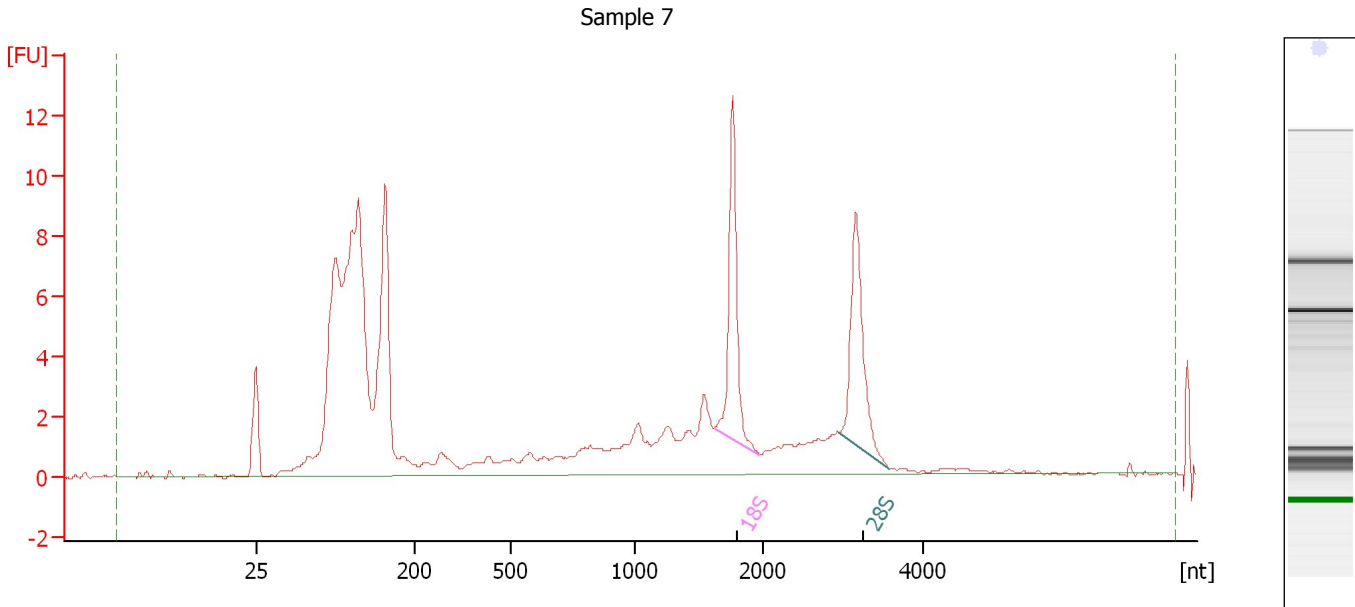
Fragment table for sample 6 : Sample 6

Name	Start Size [nt]	End Size [nt]	Area	% of total Area
18S	1,694	1,994	8.7	7.5
28S	2,748	3,758	11.3	9.7

Assay Class: Eukaryote Total RNA Nano
 Data Path: C:\...ents and Settings\Bioanalyzer\2013-12-18\2013-12-18_004.xad

Created: 12/18/2013 2:33:52 PM
 Modified: 12/18/2013 3:07:39 PM

Electropherogram Summary Continued ...



Overall Results for sample 7 : Sample 7

RNA Area:	129.7	RNA Integrity Number (RIN):	6.6 (B.02.08, Anomaly Threshold(s) manually adapted)
RNA Concentration:	118 ng/μl	Result Flagging Color:	
rRNA Ratio [28s / 18s]:	0.9	Result Flagging Label:	RIN: 6.60

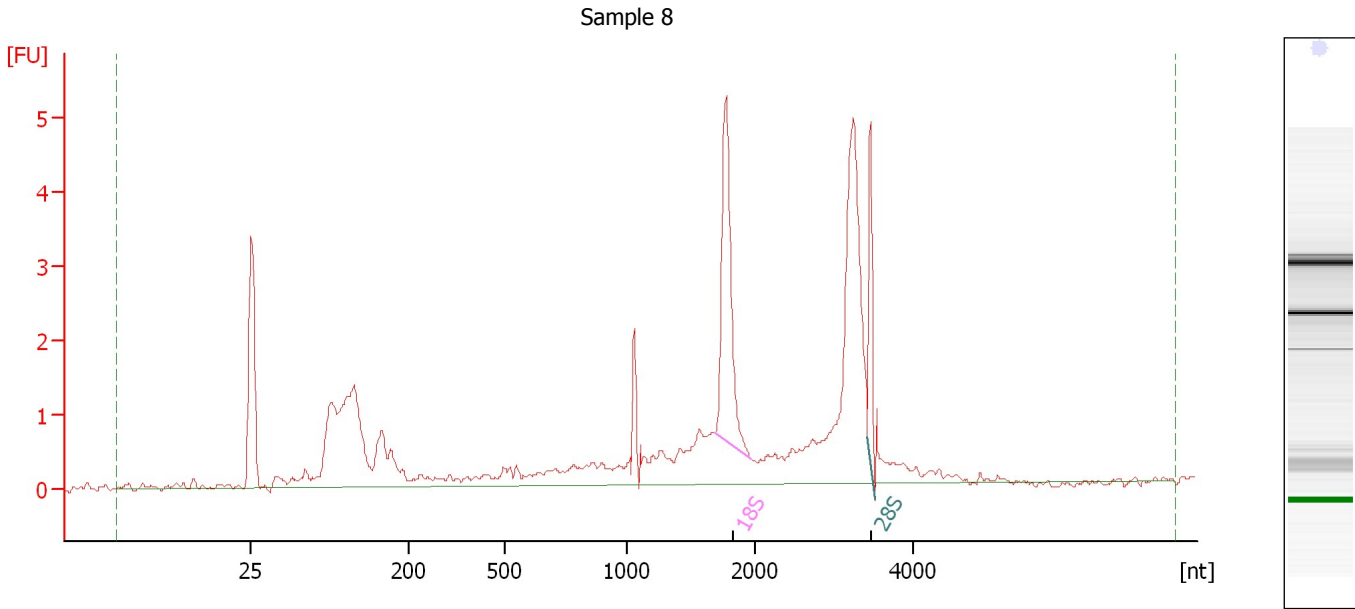
Fragment table for sample 7 : Sample 7

Name	Start Size [nt]	End Size [nt]	Area	% of total Area
18S	1,624	1,975	10.3	7.9
28S	2,948	3,575	9.3	7.2

Assay Class: Eukaryote Total RNA Nano
Data Path: C:\...ents and Settings\Bioanalyzer\2013-12-18\2013-12-18_004.xad

Created: 12/18/2013 2:33:52 PM
Modified: 12/18/2013 3:07:39 PM

Electropherogram Summary Continued ...



Overall Results for sample 8 : Sample 8

RNA Area:	41.1	RNA Integrity Number (RIN):	6.5 (B.02.08)
RNA Concentration:	37 ng/μl	Result Flagging Color:	
rRNA Ratio [28s / 18s]:	0.4	Result Flagging Label:	RIN: 6.50

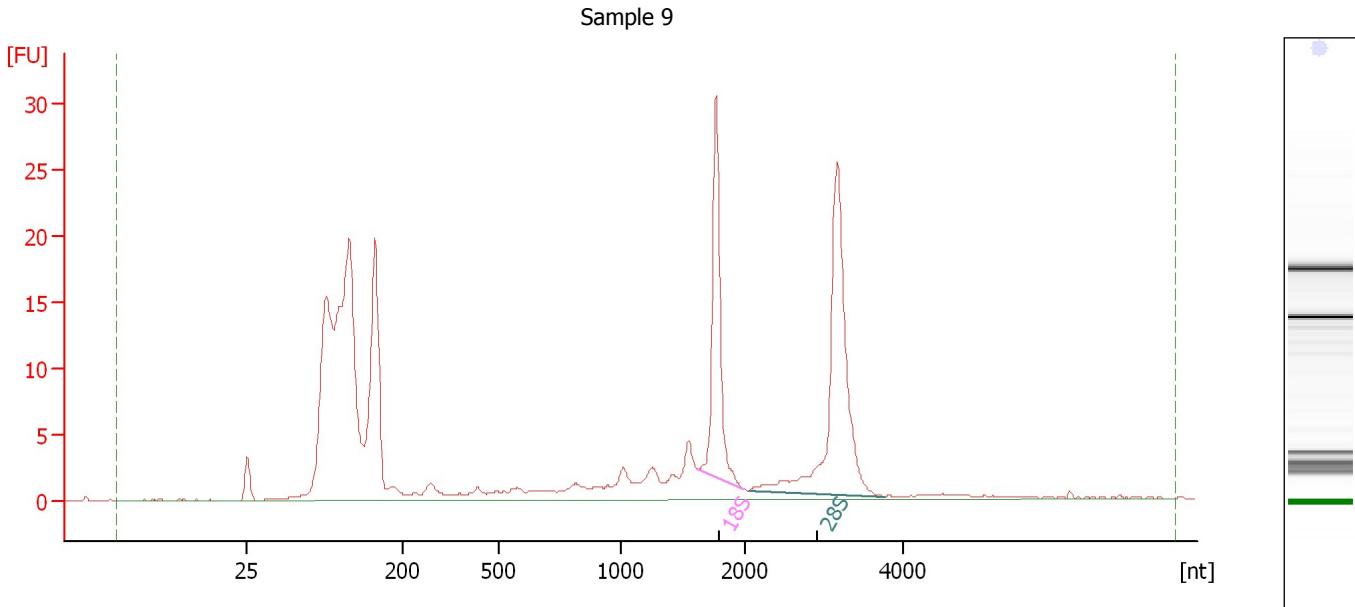
Fragment table for sample 8 : Sample 8

Name	Start Size [nt]	End Size [nt]	Area	% of total Area
18S	1,686	1,972	4.7	11.4
28S	3,422	3,516	1.8	4.3

Assay Class: Eukaryote Total RNA Nano
 Data Path: C:\...ents and Settings\Bioanalyzer\2013-12-18\2013-12-18_004.xad

Created: 12/18/2013 2:33:52 PM
 Modified: 12/18/2013 3:07:39 PM

Electropherogram Summary Continued ...



Overall Results for sample 9 : Sample 9

RNA Area:	249.2	RNA Integrity Number (RIN):	8.1 (B.02.08, Anomaly Threshold(s) manually adapted)
RNA Concentration:	226 ng/μl	Result Flagging Color:	
rRNA Ratio [28s / 18s]:	1.6	Result Flagging Label:	RIN: 8.10

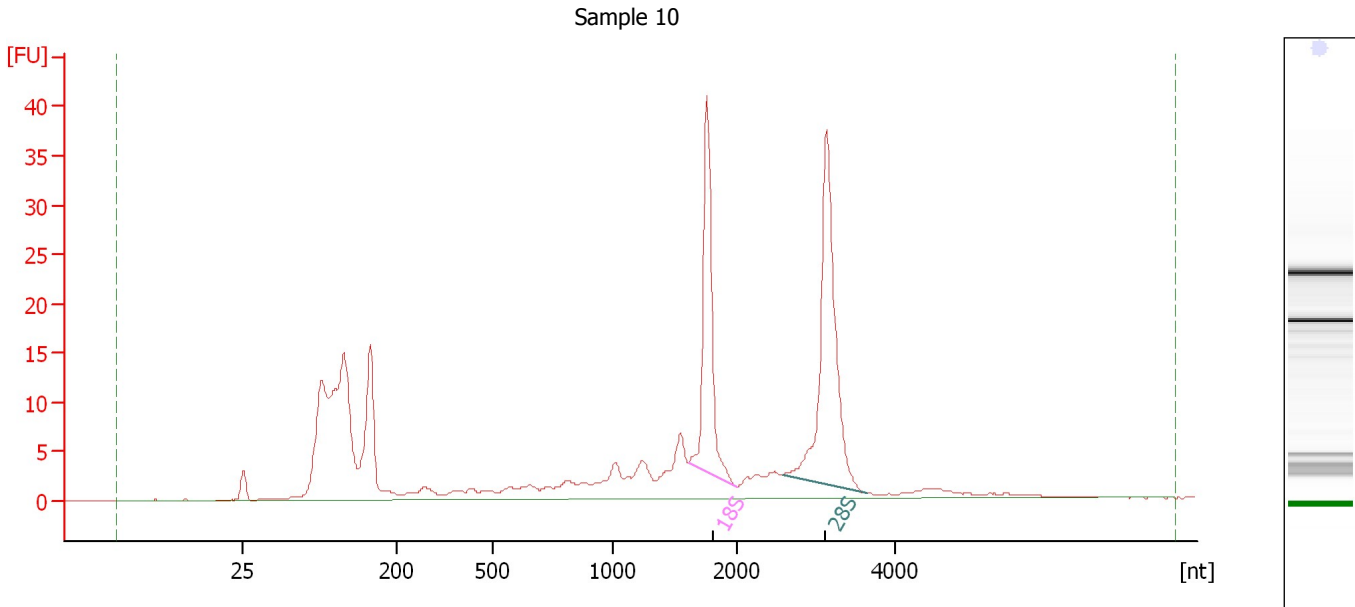
Fragment table for sample 9 : Sample 9

Name	Start Size [nt]	End Size [nt]	Area	% of total Area
18S	1,612	1,978	26.5	10.6
28S	2,032	3,753	41.3	16.6

Assay Class: Eukaryote Total RNA Nano
 Data Path: C:\...ents and Settings\Bioanalyzer\2013-12-18\2013-12-18_004.xad

Created: 12/18/2013 2:33:52 PM
 Modified: 12/18/2013 3:07:39 PM

Electropherogram Summary Continued ...



Overall Results for sample 10 : Sample 10

RNA Area:	289.8	RNA Integrity Number (RIN):	7.8 (B.02.08)
RNA Concentration:	263 ng/μl	Result Flagging Color:	
rRNA Ratio [28s / 18s]:	1.5	Result Flagging Label:	RIN: 7.80

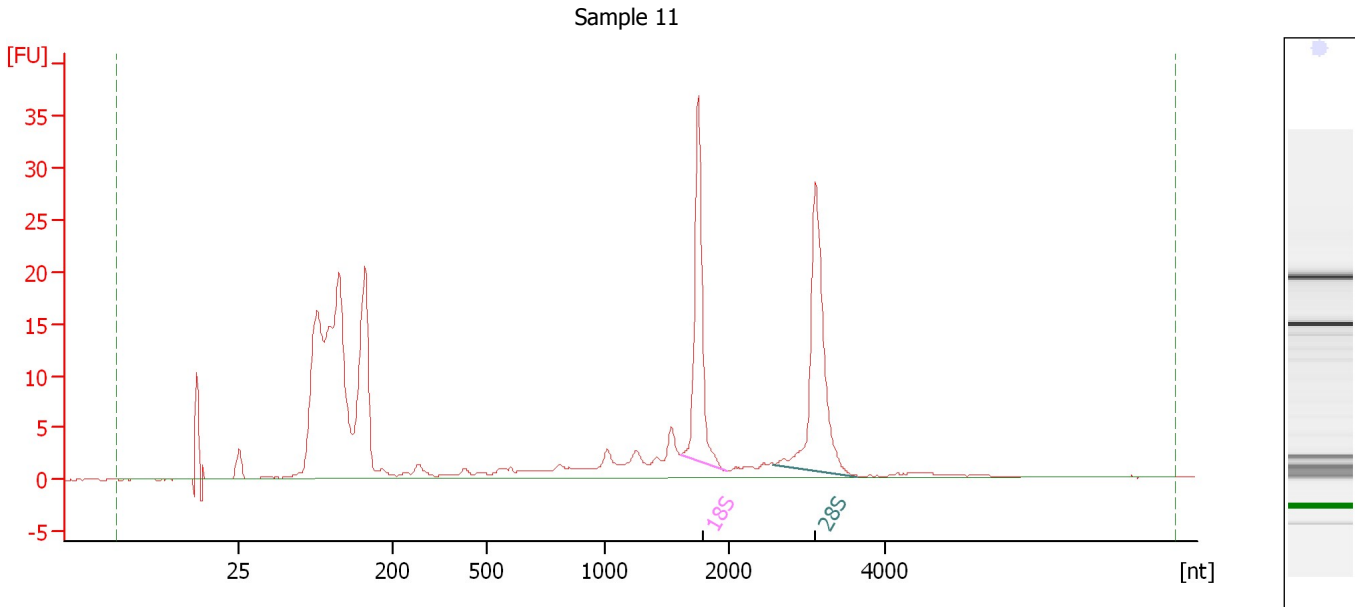
Fragment table for sample 10 : Sample 10

Name	Start Size [nt]	End Size [nt]	Area	% of total Area
18S	1,606	1,991	36.4	12.5
28S	2,588	3,639	54.3	18.7

Assay Class: Eukaryote Total RNA Nano
 Data Path: C:\...ents and Settings\Bioanalyzer\2013-12-18\2013-12-18_004.xad

Created: 12/18/2013 2:33:52 PM
 Modified: 12/18/2013 3:07:39 PM

Electropherogram Summary Continued ...



Overall Results for sample 11 : Sample 11

RNA Area:	265.2	RNA Integrity Number (RIN):	8 (B.02.08, Anomaly Threshold(s) manually adapted)
RNA Concentration:	241 ng/μl	Result Flagging Color:	
rRNA Ratio [28s / 18s]:	1.2	Result Flagging Label:	RIN:8

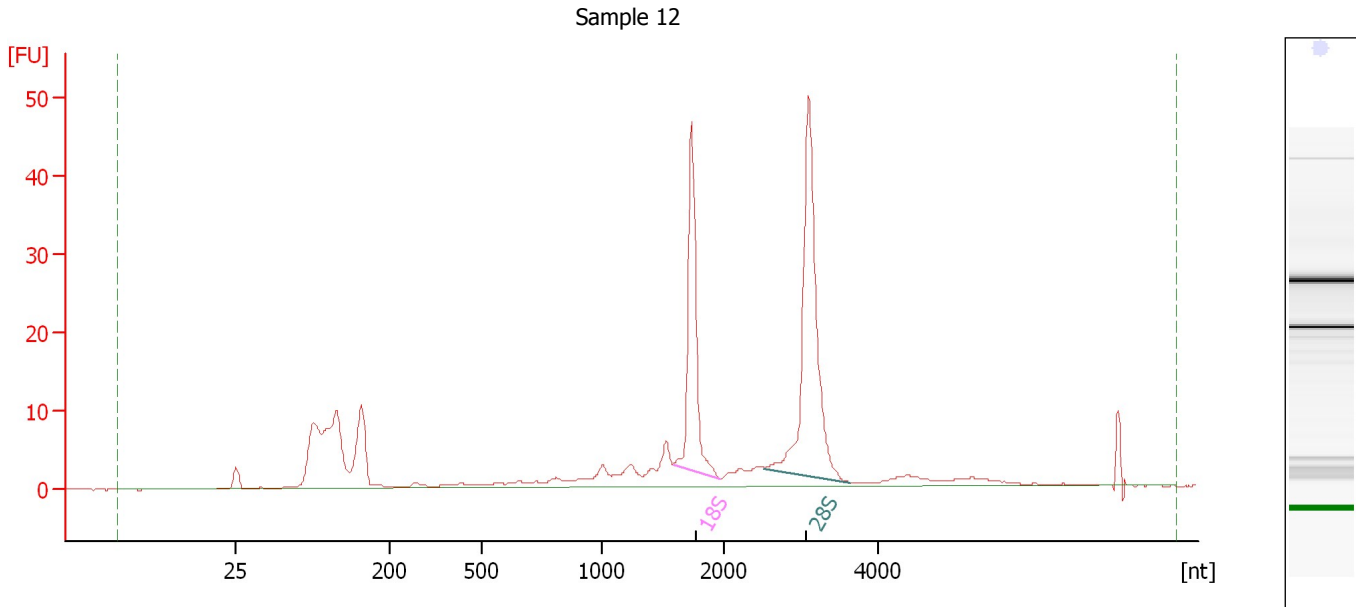
Fragment table for sample 11 : Sample 11

Name	Start Size [nt]	End Size [nt]	Area	% of total Area
18S	1,600	1,971	31.4	11.9
28S	2,560	3,647	36.9	13.9

Assay Class: Eukaryote Total RNA Nano
 Data Path: C:\...ents and Settings\Bioanalyzer\2013-12-18\2013-12-18_004.xad

Created: 12/18/2013 2:33:52 PM
 Modified: 12/18/2013 3:07:39 PM

Electropherogram Summary Continued ...



Overall Results for sample 12 : Sample 12

RNA Area:	255.0	RNA Integrity Number (RIN):	8.6 (B.02.08)
RNA Concentration:	232 ng/μl	Result Flagging Color:	
rRNA Ratio [28s / 18s]:	1.7	Result Flagging Label:	RIN: 8.60

Fragment table for sample 12 : Sample 12

Name	Start Size [nt]	End Size [nt]	Area	% of total Area
18S	1,587	1,960	39.7	15.6
28S	2,518	3,640	67.6	26.5

Assay Class: Eukaryote Total RNA Nano
Data Path: C:\...ents and Settings\Bioanalyzer\2013-12-18\2013-12-18_004.xad

Created: 12/18/2013 2:33:52 PM
Modified: 12/18/2013 3:07:39 PM

Gel Image

