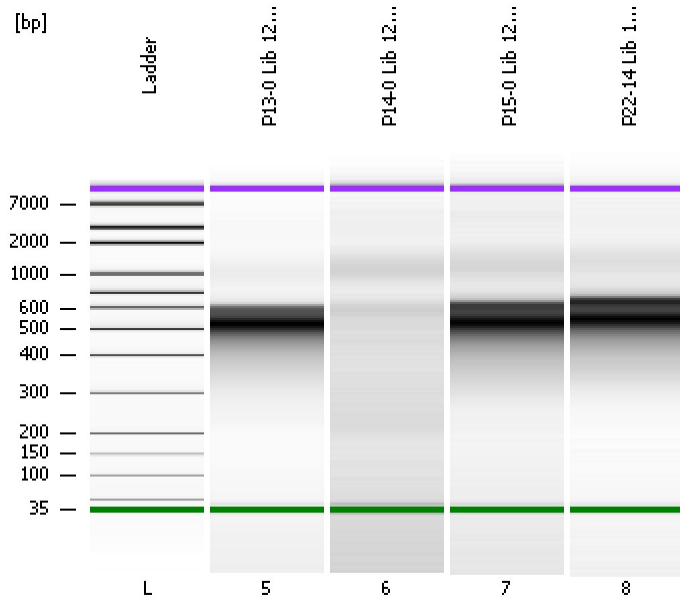


Assay Class: High Sensitivity DNA Assay
Data Path: C:\...nd Settings\Bioanalyzer\2013-12-19\2013-12-19_003_P_Lib.xad

Created: 12/19/2013 12:52:35 PM
Modified: 1/7/2014 9:41:18 AM

Electrophoresis File Run Summary



Instrument Information:

Instrument Name: DE13701086 Firmware: C.01.069
Serial#: DE13701086 Type: G2938B

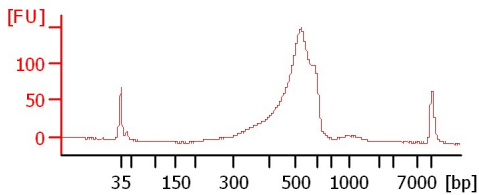
Assay Information:

Assay Origin Path: C:\Program Files\Agilent\2100 bioanalyzer\2100 expert\assays\dsDNA\High Sensitivity DNA.xsy
Assay Class: High Sensitivity DNA Assay
Version: 1.03
Assay Comments: Copyright © 2003-2010 Agilent Technologies

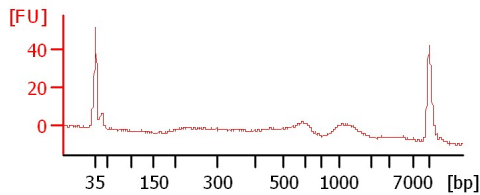
Chip Information:

Chip Lot #:
Reagent Kit Lot #:
Chip Comments:

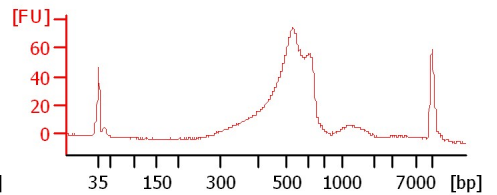
P13-0 Lib 12/19/13



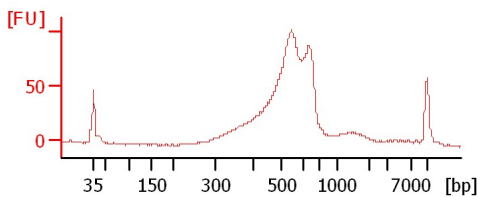
P14-0 Lib 12/19/13



P15-0 Lib 12/19/13



P22-14 Lib 12/19/13



Assay Class: High Sensitivity DNA Assay
Data Path: C:\...nd Settings\Bioanalyzer\2013-12-19\2013-12-19_003_P_Lib.xad

Created: 12/19/2013 12:52:35 PM
Modified: 1/7/2014 9:41:18 AM

Electrophoresis File Run Summary (Chip Summary)

Sample Name	Sample Comment	Rest. Digest	Status	Observation	Result Label	Result Color
P13-0 Lib 12/19/13		<input type="checkbox"/>	✓			
P14-0 Lib 12/19/13		<input type="checkbox"/>	✓			
P15-0 Lib 12/19/13		<input type="checkbox"/>	✓			
P22-14 Lib 12/19/13		<input type="checkbox"/>	✓			
Ladder		<input type="checkbox"/>	✓			

Chip Lot #

Reagent Kit Lot #

Chip Comments :

Assay Class: High Sensitivity DNA Assay
Data Path: C:\...nd Settings\Bioanalyzer\2013-12-19\2013-12-19_003_P_Lib.xad

Created: 12/19/2013 12:52:35 PM
Modified: 1/7/2014 9:41:18 AM

Electrophoresis Assay Details

General Analysis Settings

Number of Available Sample and Ladder Wells (Max.) : 12
Minimum Visible Range [s] : 32
Maximum Visible Range [s] : 138
Start Analysis Time Range [s] : 33
End Analysis Time Range [s] : 137.5
Ladder Concentration [pg/μl] : 1950
Uses Standard Area for Ladder Fragments
Lower Marker Concentration [pg/μl] : 125
Upper Marker Concentration [pg/μl] : 75
Used Upper Marker for Quantitation
Standard Curve Fit is Point to Point
Show Data Aligned to Lower and Upper Marker

Integrator Settings

Integration Start Time [s] : 33.05
Integration End Time [s] : 137
Slope Threshold : 0.8
Height Threshold [FU] : 5
Area Threshold : 0.1
Width Threshold [s] : 0.6
Baseline Plateau [s] : 0.5

Filter Settings

Filter Width [s] : 0.5
Polynomial Order : 4

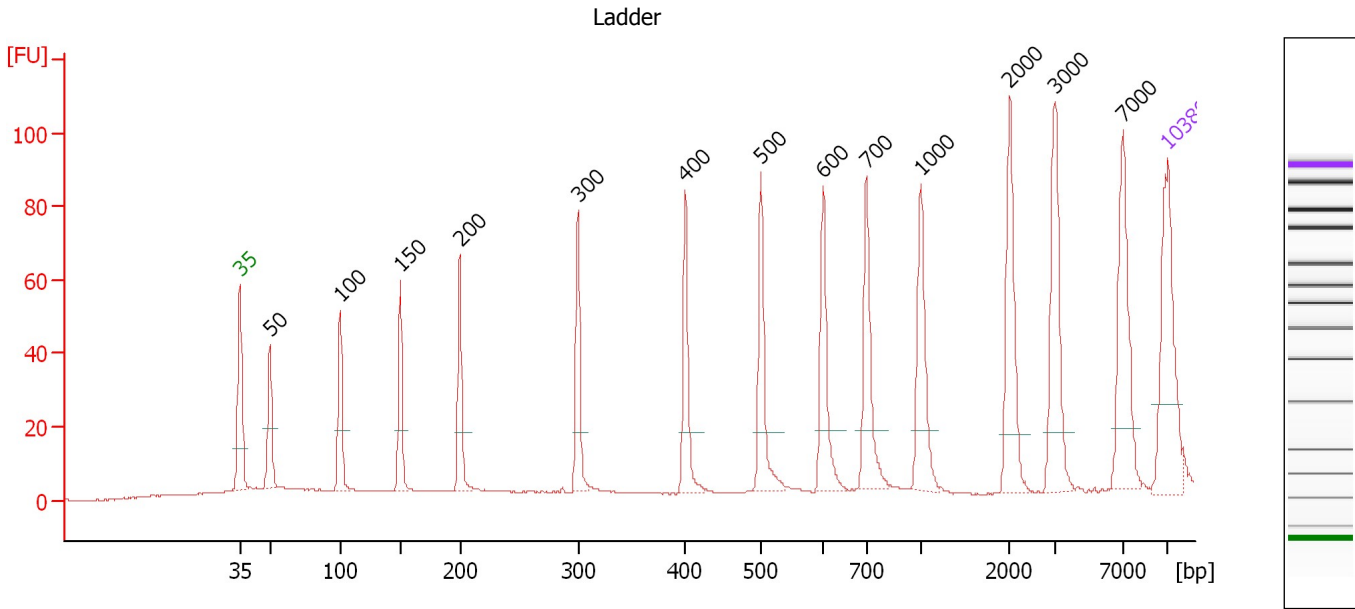
Ladder

Ladder Peak	Size	Area
1	35	160
2	50	210
3	100	208
4	150	221
5	200	242
6	300	270
7	400	305
8	500	306
9	600	336
10	700	321
11	1000	366
12	2000	413
13	3000	411
14	7000	400
15	10380	214

Assay Class: High Sensitivity DNA Assay
 Data Path: C:\...nd Settings\Bioanalyzer\2013-12-19\2013-12-19_003_P_Lib.xad

Created: 12/19/2013 12:52:35 PM
 Modified: 1/7/2014 9:41:18 AM

Electropherogram Summary



Overall Results for Ladder

Noise: 0.2

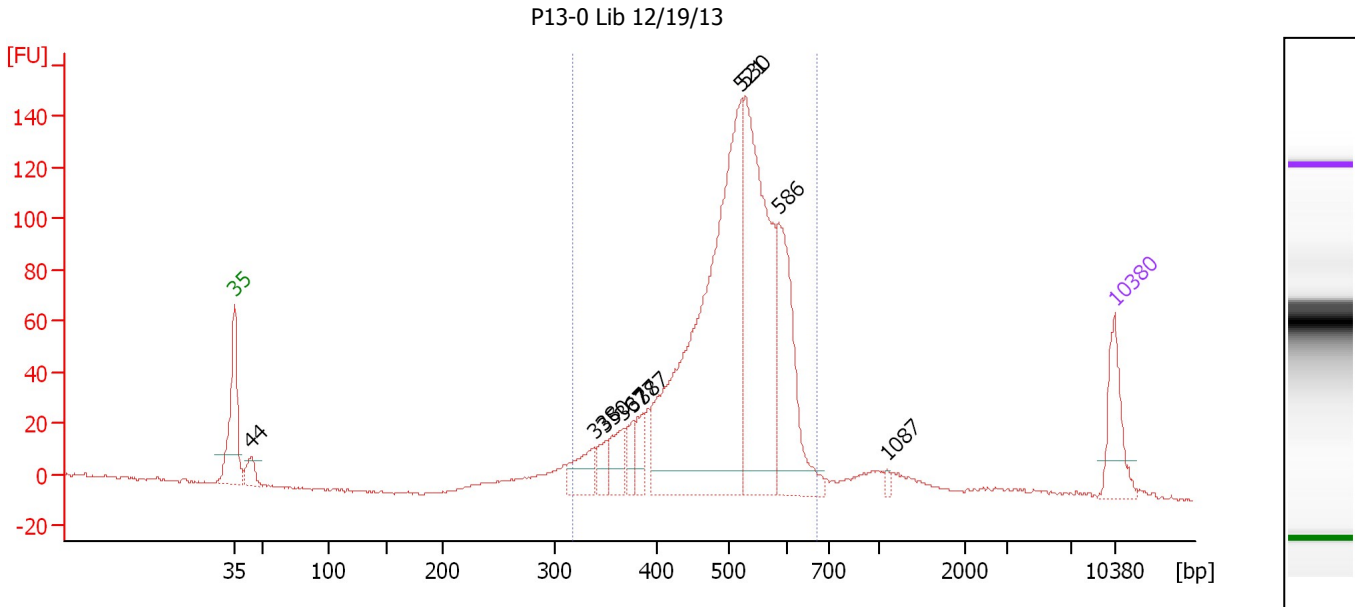
Peak table for Ladder

Peak	Aligned Migration Time [s]	Size [bp]	Conc. [pg/μl]	Molarity [pmol/l]	Observations
1	43.00	35	125.00	5,411.3	Lower Marker
2	45.25	50	150.00	4,545.5	Ladder Peak
3	50.56	100	150.00	2,272.7	Ladder Peak
4	55.10	150	150.00	1,515.2	Ladder Peak
5	59.61	200	150.00	1,136.4	Ladder Peak
6	68.49	300	150.00	757.6	Ladder Peak
7	76.57	400	150.00	568.2	Ladder Peak
8	82.28	500	150.00	454.5	Ladder Peak
9	86.99	600	150.00	378.8	Ladder Peak
10	90.24	700	150.00	324.7	Ladder Peak
11	94.34	1,000	150.00	227.3	Ladder Peak
12	101.06	2,000	150.00	113.6	Ladder Peak
13	104.48	3,000	150.00	75.8	Ladder Peak
14	109.58	7,000	150.00	32.5	Ladder Peak
15	113.00	10,380	75.00	10.9	Upper Marker

Assay Class: High Sensitivity DNA Assay
 Data Path: C:\...nd Settings\Bioanalyzer\2013-12-19\2013-12-19_003_P_Lib.xad

Created: 12/19/2013 12:52:35 PM
 Modified: 1/7/2014 9:41:18 AM

Electropherogram Summary Continued ...



Setpoint Deviations for sample 5 : P13-0 Lib 12/19/13

Height Threshold [FU] : 10

Overall Results for sample 5 : P13-0 Lib 12/19/13

Number of peaks found: 10 Corr. Area 1: 1,480.6
 Noise: 0.5

Peak table for sample 5 : P13-0 Lib 12/19/13

Peak	Aligned Migration Time [s]	Size [bp]	Conc. [pg/μl]	Molarity [pmol/l]	Observations
1	43.00	35	125.00	5,411.3	Lower Marker
2	44.32	44	45.71	1,582.5	
3	71.59	338	70.30	314.8	
4	72.53	350	38.73	167.7	
5	73.93	367	63.00	259.9	
6	74.69	377	38.90	156.4	
7	75.50	387	41.97	164.5	
8	83.26	521	965.12	2,807.8	
9	83.68	530	547.53	1,565.8	
10	86.32	586	267.05	690.8	
11	94.93	1,087	6.72	9.4	
12	113.00	10,380	75.00	10.9	Upper Marker

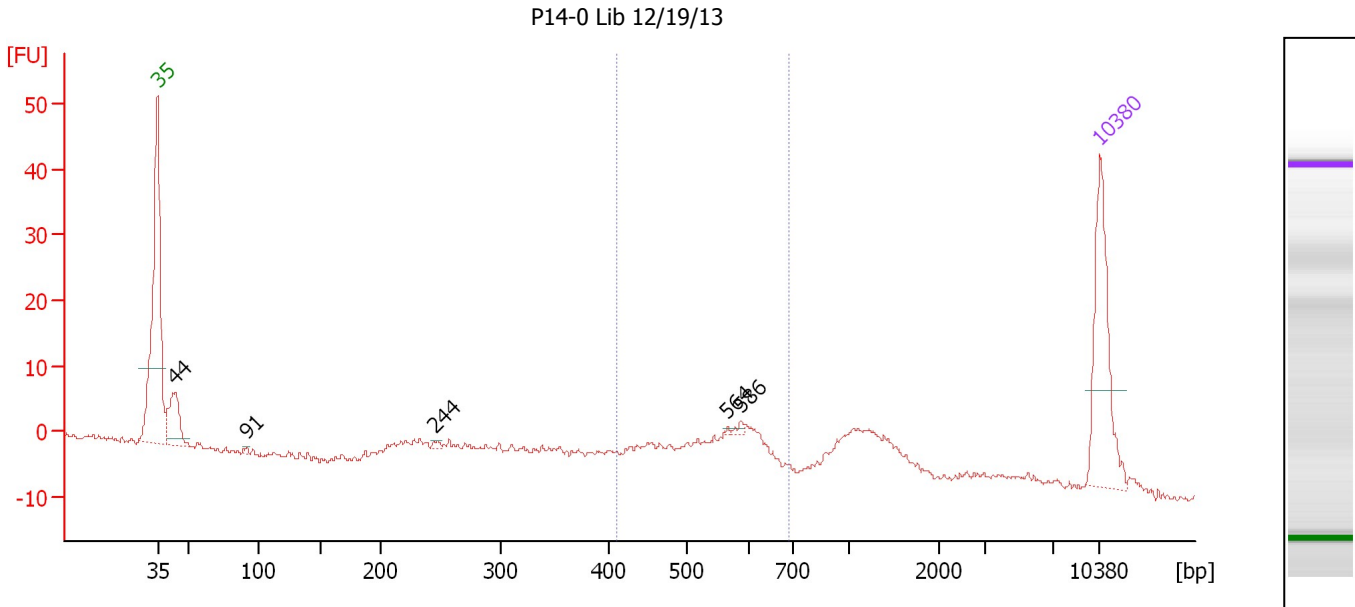
Region table for sample 5 : P13-0 Lib 12/19/13

From [bp]	To [bp]	Average Size [bp]	Molarity [pmol/l]	Conc. [pg/μl]	Corr. Area	% of Total	Size distribution in CV [%]	Color
318	671	503	6,225.7	1,999.03	1,480.6	91	14.4	Blue

Assay Class: High Sensitivity DNA Assay
 Data Path: C:\...nd Settings\Bioanalyzer\2013-12-19\2013-12-19_003_P_Lib.xad

Created: 12/19/2013 12:52:35 PM
 Modified: 1/7/2014 9:41:18 AM

Electropherogram Summary Continued ...



Setpoint Deviations for sample 6 : P14-0 Lib 12/19/13

Height Threshold [FU] : 1

Overall Results for sample 6 : P14-0 Lib 12/19/13

Number of peaks found: 5 Corr. Area 1: 70.7
 Noise: 0.4

Peak table for sample 6 : P14-0 Lib 12/19/13

Peak	Aligned Migration Time [s]	Size [bp]	Conc. [pg/μl]	Molarity [pmol/l]	Observations
1	43.00	35	125.00	5,411.3	Lower Marker
2	44.28	44	52.98	1,842.9	
3	49.59	91	2.24	37.3	
4	63.55	244	2.41	15.0	
5	85.30	564	1.03	2.8	
6	86.33	586	2.55	6.6	
7	113.00	10,380	75.00	10.9	Upper Marker

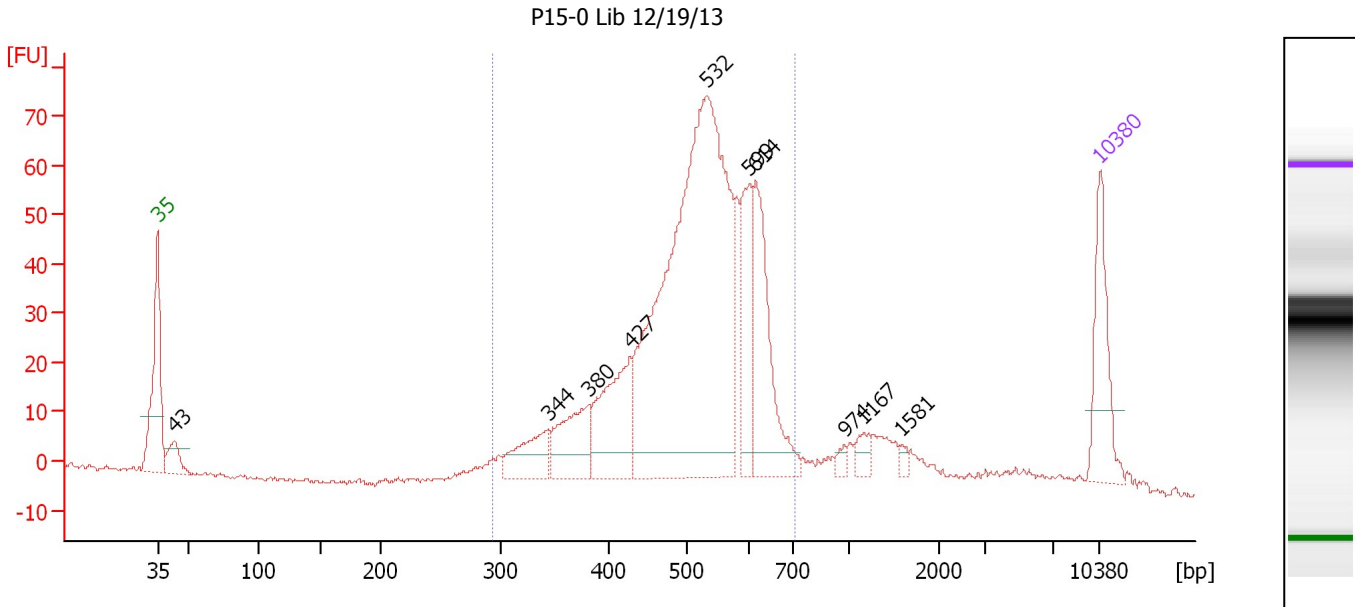
Region table for sample 6 : P14-0 Lib 12/19/13

From [bp]	To [bp]	Average Size [bp]	Molarity [pmol/l]	Conc. [pg/μl]	Corr. Area	% of Total	Size distribution in CV [%]	Color
409	690	542	381.3	133.28	70.7	31	12.9	Blue

Assay Class: High Sensitivity DNA Assay
 Data Path: C:\...nd Settings\Bioanalyzer\2013-12-19\2013-12-19_003_P_Lib.xad

Created: 12/19/2013 12:52:35 PM
 Modified: 1/7/2014 9:41:18 AM

Electropherogram Summary Continued ...



Overall Results for sample 7 : P15-0 Lib 12/19/13

Number of peaks found: 10 Corr. Area 1: 870.4
 Noise: 0.5

Peak table for sample 7 : P15-0 Lib 12/19/13

Peak	Aligned Migration Time [s]	Size [bp]	Conc. [pg/μl]	Molarity [pmol/l]	Observations
1	43.00	35	125.00	5,411.3	Lower Marker
2	44.26	43	38.72	1,352.1	
3	72.03	344	66.02	290.9	
4	74.98	380	85.06	338.9	
5	78.11	427	130.65	463.7	
6	83.79	532	799.52	2,276.5	
7	86.92	599	101.67	257.4	
8	87.44	614	158.16	390.3	
9	93.99	974	6.85	10.6	
10	95.47	1,167	14.49	18.8	
11	98.24	1,581	5.32	5.1	
12	113.00	10,380	75.00	10.9	Upper Marker

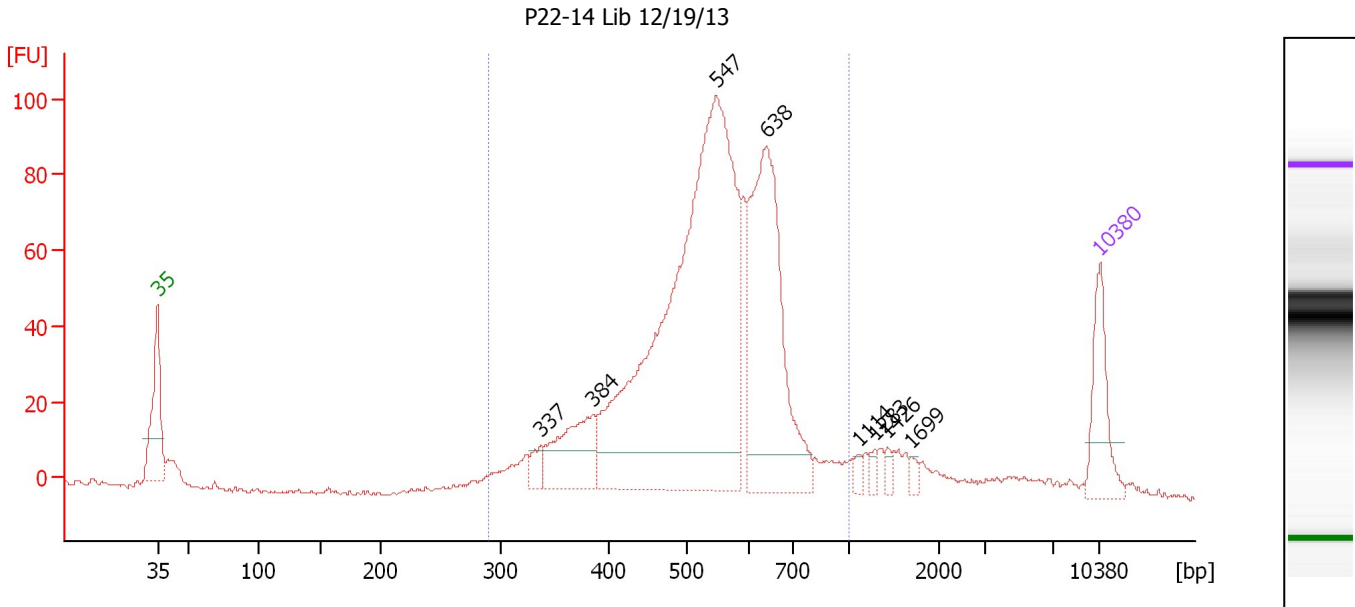
Region table for sample 7 : P15-0 Lib 12/19/13

From [bp]	To [bp]	Average Size [bp]	Molarity [pmol/l]	Conc. [pg/μl]	Corr. Area	% of Total	Size distribution in CV [%]	Color
293	703	511	4,520.7	1,458.25	870.4	86	16.6	Blue

Assay Class: High Sensitivity DNA Assay
 Data Path: C:\...nd Settings\Bioanalyzer\2013-12-19\2013-12-19_003_P_Lib.xad

Created: 12/19/2013 12:52:35 PM
 Modified: 1/7/2014 9:41:18 AM

Electropherogram Summary Continued ...



Setpoint Deviations for sample 8 : P22-14 Lib 12/19/13

Height Threshold [FU] : 10

Overall Results for sample 8 : P22-14 Lib 12/19/13

Number of peaks found: 8 Corr. Area 1: 1,202.4
 Noise: 0.6

Peak table for sample 8 : P22-14 Lib 12/19/13

Peak	Aligned Migration Time [s]	Size [bp]	Conc. [pg/μl]	Molarity [pmol/l]	Observations
1	43.00	35	125.00	5,411.3	Lower Marker
2	71.50	337	23.07	103.7	
3	75.29	384	132.06	520.8	
4	84.50	547	1,098.11	3,040.6	
5	88.21	638	429.60	1,020.8	
6	95.11	1,114	9.79	13.3	
7	96.24	1,283	9.29	11.0	
8	97.20	1,426	8.81	9.4	
9	99.03	1,699	8.73	7.8	
10	113.00	10,380	75.00	10.9	Upper Marker

Region table for sample 8 : P22-14 Lib 12/19/13

From [bp]	To [bp]	Average Size [bp]	Molarity [pmol/l]	Conc. [pg/μl]	Corr. Area	% of Total	Size distribution in CV [%]	Color
290	1,000	541	5,511.8	1,854.98	1,202.4	90	19.9	Blue

Assay Class: High Sensitivity DNA Assay
Data Path: C:\...nd Settings\Bioanalyzer\2013-12-19\2013-12-19_003_P_Lib.xad

Created: 12/19/2013 12:52:35 PM
Modified: 1/7/2014 9:41:18 AM

Gel Image

