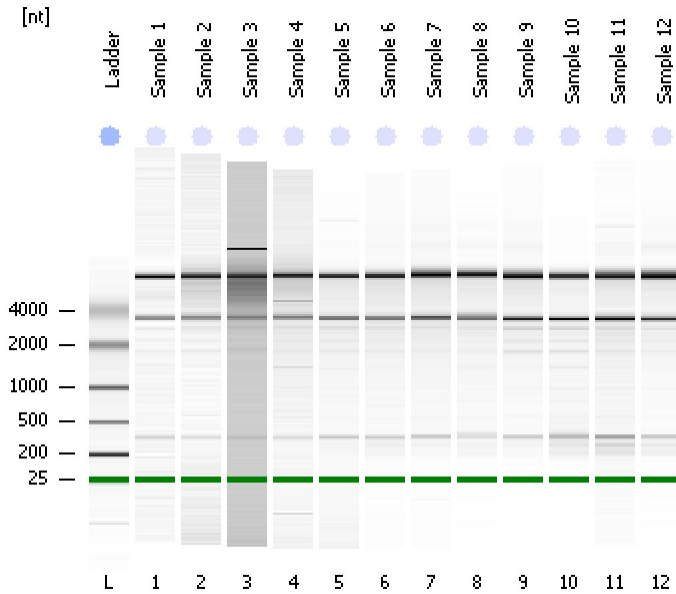


Assay Class: Eukaryote Total RNA Nano
Data Path: C:\...ents and Settings\Bioanalyzer\2013-12-20\2013-12-20_002.xad

Created: 12/20/2013 4:39:43 PM
Modified: 12/20/2013 5:09:37 PM

Electrophoresis File Run Summary



Instrument Information:

Instrument Name: DE13701086 Firmware: C.01.069
Serial#: DE13701086 Type: G2938B

Assay Information:

Assay Origin Path: C:\Program Files\Agilent\2100 bioanalyzer\2100 expert\assays\RNA\Eukaryote Total RNA Nano Series II.xsy

Assay Class: Eukaryote Total RNA Nano

Version: 2.6

Assay Comments: Total RNA Analysis ng sensitivity (Eukaryote)

© Copyright 2003 - 2009 Agilent Technologies, Inc.

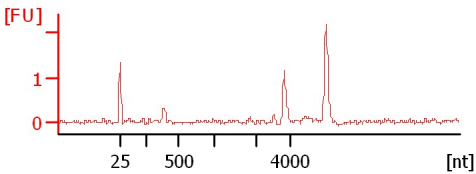
Chip Information:

Chip Lot #:

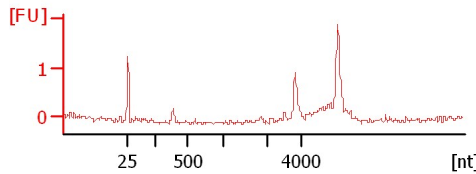
Reagent Kit Lot #:

Chip Comments:

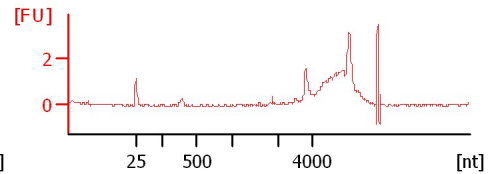
Sample 1
RIN: 9.90



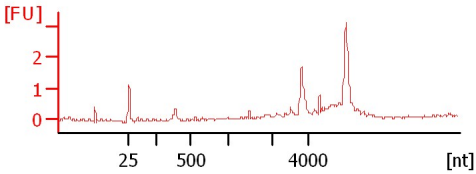
Sample 2
RIN: 9.50



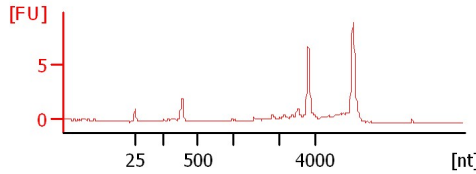
Sample 3
RIN: 5.10



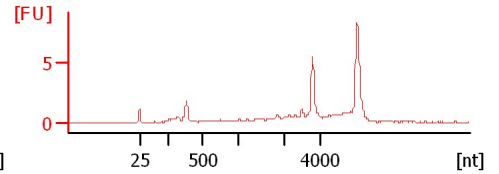
Sample 4
RIN: 4.90



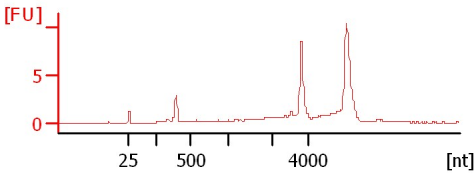
Sample 5
RIN: 5.50



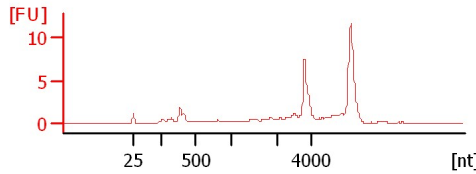
Sample 6
RIN: 5



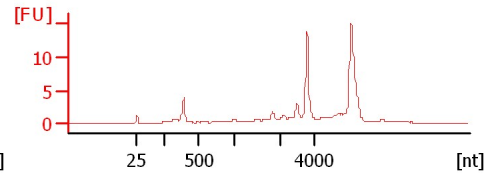
Sample 7
RIN: 8



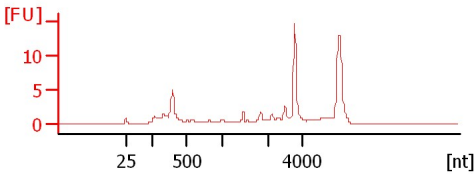
Sample 8
RIN: 8.20



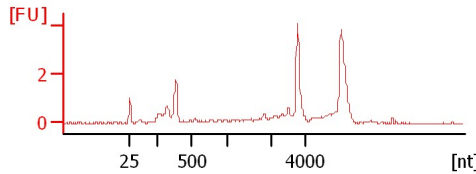
Sample 9
RIN: 7.80



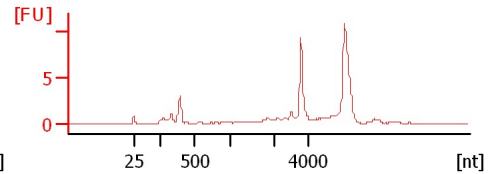
Sample 10
RIN: 7.40



Sample 11
RIN: 7.80



Sample 12
RIN: 8.30



Assay Class: Eukaryote Total RNA Nano
 Data Path: C:\...ents and Settings\Bioanalyzer\2013-12-20\2013-12-20_002.xad

Created: 12/20/2013 4:39:43 PM
 Modified: 12/20/2013 5:09:37 PM

Electrophoresis File Run Summary (Chip Summary)

Sample Name	Sample Comment	Status	Result Label	Result Color
Sample 1		✓	RIN: 9.90	
Sample 2		✓	RIN: 9.50	
Sample 3		✓	RIN: 5.10	
Sample 4		✓	RIN: 4.90	
Sample 5		✓	RIN: 5.50	
Sample 6		✓	RIN:5	
Sample 7		✓	RIN:8	
Sample 8		✓	RIN: 8.20	
Sample 9		✓	RIN: 7.80	
Sample 10		✓	RIN: 7.40	
Sample 11		✓	RIN: 7.80	
Sample 12		✓	RIN: 8.30	
Ladder		✓	All Other Samples	

Chip Lot #

Reagent Kit Lot #

Chip Comments :

Assay Class: Eukaryote Total RNA Nano
Data Path: C:\...ents and Settings\Bioanalyzer\2013-12-20\2013-12-20_002.xad

Created: 12/20/2013 4:39:43 PM
Modified: 12/20/2013 5:09:37 PM

Electrophoresis Assay Details

General Analysis Settings

Number of Available Sample and Ladder Wells (Max.) : 13
Minimum Visible Range [s] : 17
Maximum Visible Range [s] : 70
Start Analysis Time Range [s] : 19
End Analysis Time Range [s] : 69
Ladder Concentration [ng/μl] : 150
Lower Marker Concentration [ng/μl] : 0
Upper Marker Concentration [ng/μl] : 0
Used Lower Marker for Quantitation
Standard Curve Fit is Logarithmic
Show Data Aligned to Lower Marker

Integrator Settings

Integration Start Time [s] : 19
Integration End Time [s] : 69
Slope Threshold : 0.6
Height Threshold [FU] : 0.5
Area Threshold : 0.2
Width Threshold [s] : 0.5
Baseline Plateau [s] : 6

Filter Settings

Filter Width [s] : 0.5
Polynomial Order : 4

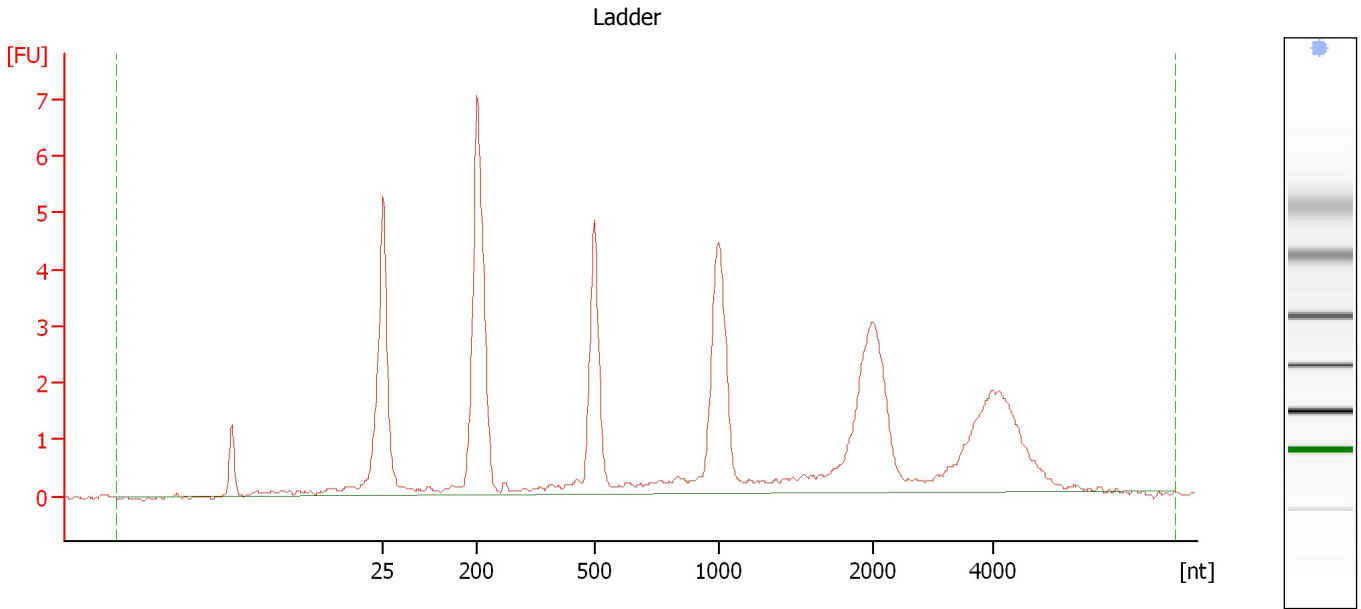
Ladder

Ladder Peak	Size
1	25
2	200
3	500
4	1000
5	2000
6	4000

Assay Class: Eukaryote Total RNA Nano
Data Path: C:\...ents and Settings\Bioanalyzer\2013-12-20\2013-12-20_002.xad

Created: 12/20/2013 4:39:43 PM
Modified: 12/20/2013 5:09:37 PM

Electropherogram Summary



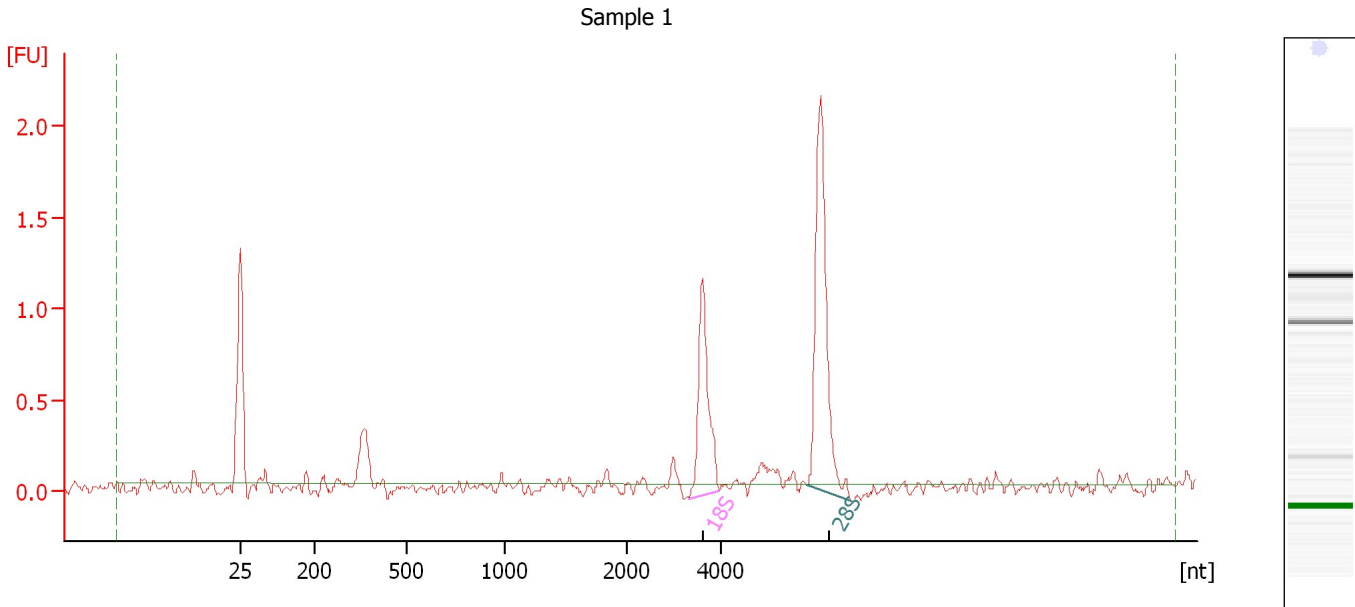
Overall Results for Ladder

RNA Area:	53.1	Result Flagging Color:	
RNA Concentration:	150 ng/μl	Result Flagging Label:	All Other Samples

Assay Class: Eukaryote Total RNA Nano
 Data Path: C:\...ents and Settings\Bioanalyzer\2013-12-20\2013-12-20_002.xad

Created: 12/20/2013 4:39:43 PM
 Modified: 12/20/2013 5:09:37 PM

Electropherogram Summary Continued ...



Overall Results for sample 1 : Sample 1

RNA Area:	4.6	RNA Integrity Number (RIN):	9.9 (B.02.08, Anomaly Threshold(s) manually adapted)
RNA Concentration:	13 ng/μl	Result Flagging Color:	
rRNA Ratio [28s / 18s]:	1.7	Result Flagging Label:	RIN: 9.90

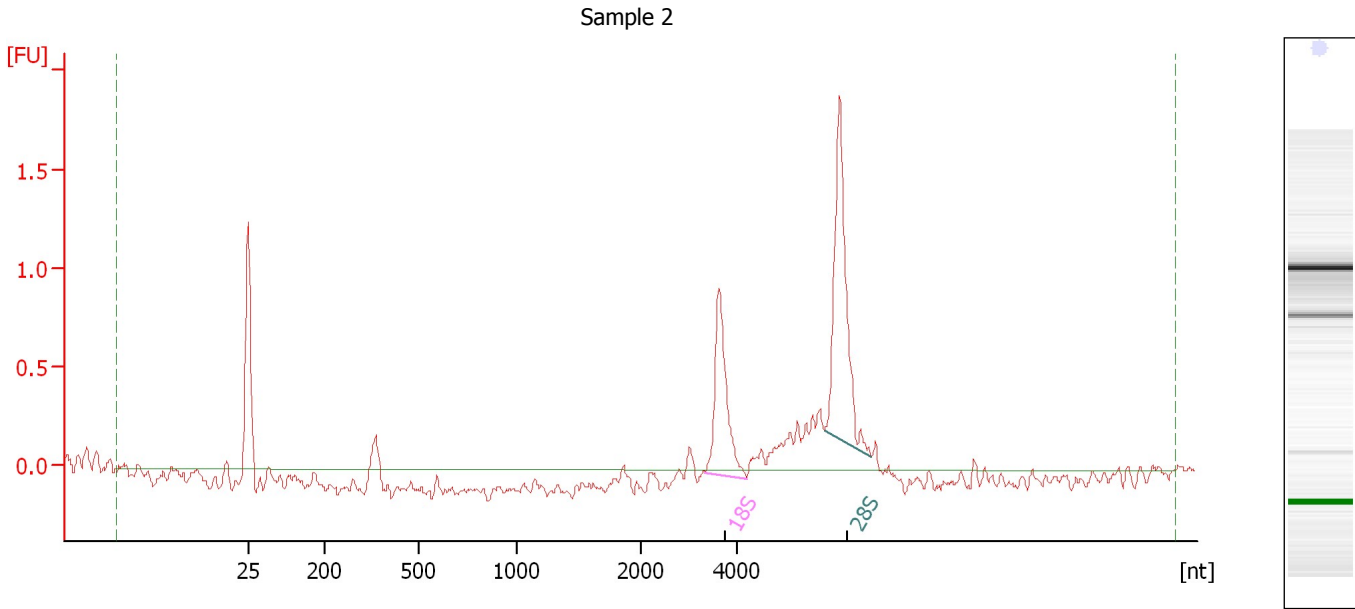
Fragment table for sample 1 : Sample 1

Name	Start Size [nt]	End Size [nt]	Area	% of total Area
18S	3,334	3,966	1.4	29.7
28S	5,797	6,746	2.4	51.5

Assay Class: Eukaryote Total RNA Nano
Data Path: C:\...ents and Settings\Bioanalyzer\2013-12-20\2013-12-20_002.xad

Created: 12/20/2013 4:39:43 PM
Modified: 12/20/2013 5:09:37 PM

Electropherogram Summary Continued ...



Overall Results for sample 2 : Sample 2

RNA Area:	5.0	RNA Integrity Number (RIN):	9.5 (B.02.08)
RNA Concentration:	14 ng/μl	Result Flagging Color:	
rRNA Ratio [28s / 18s]:	1.6	Result Flagging Label:	RIN: 9.50

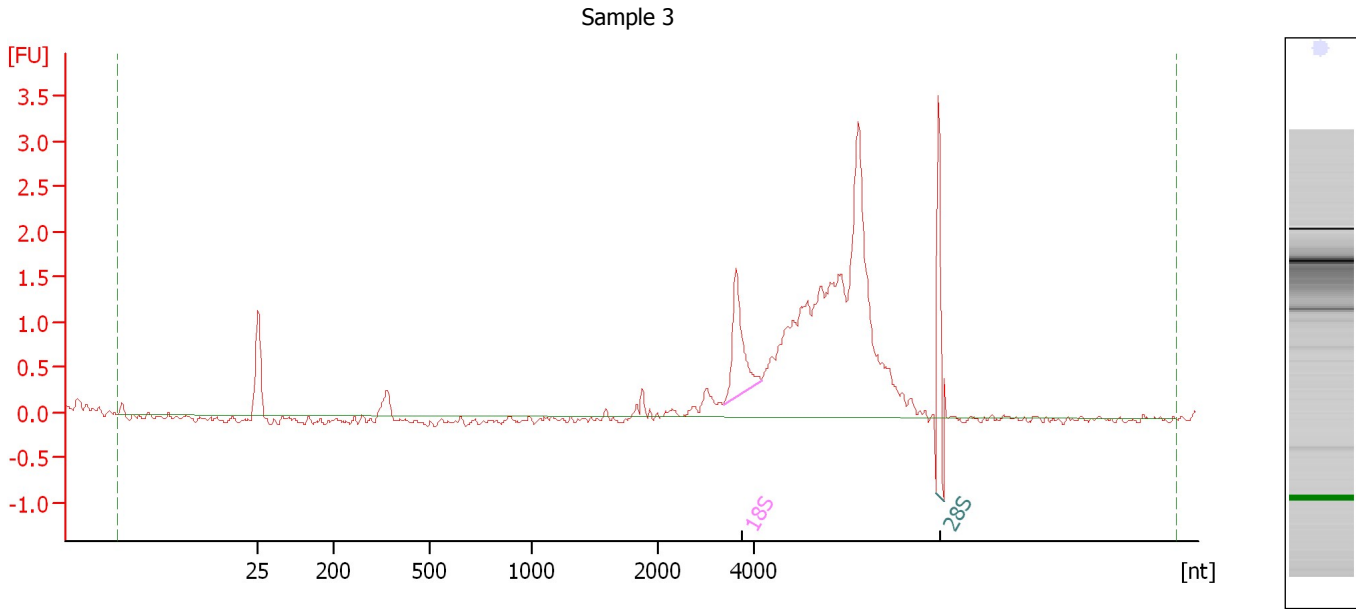
Fragment table for sample 2 : Sample 2

Name	Start Size [nt]	End Size [nt]	Area	% of total Area
18S	3,341	4,186	1.2	24.4
28S	5,810	6,789	2.0	39.7

Assay Class: Eukaryote Total RNA Nano
Data Path: C:\...ents and Settings\Bioanalyzer\2013-12-20\2013-12-20_002.xad

Created: 12/20/2013 4:39:43 PM
Modified: 12/20/2013 5:09:37 PM

Electropherogram Summary Continued ...



Overall Results for sample 3 : Sample 3

RNA Area:	19.4	RNA Integrity Number (RIN):	5.1 (B.02.08)
RNA Concentration:	55 ng/μl	Result Flagging Color:	
rRNA Ratio [28s / 18s]:	1.1	Result Flagging Label:	RIN: 5.10

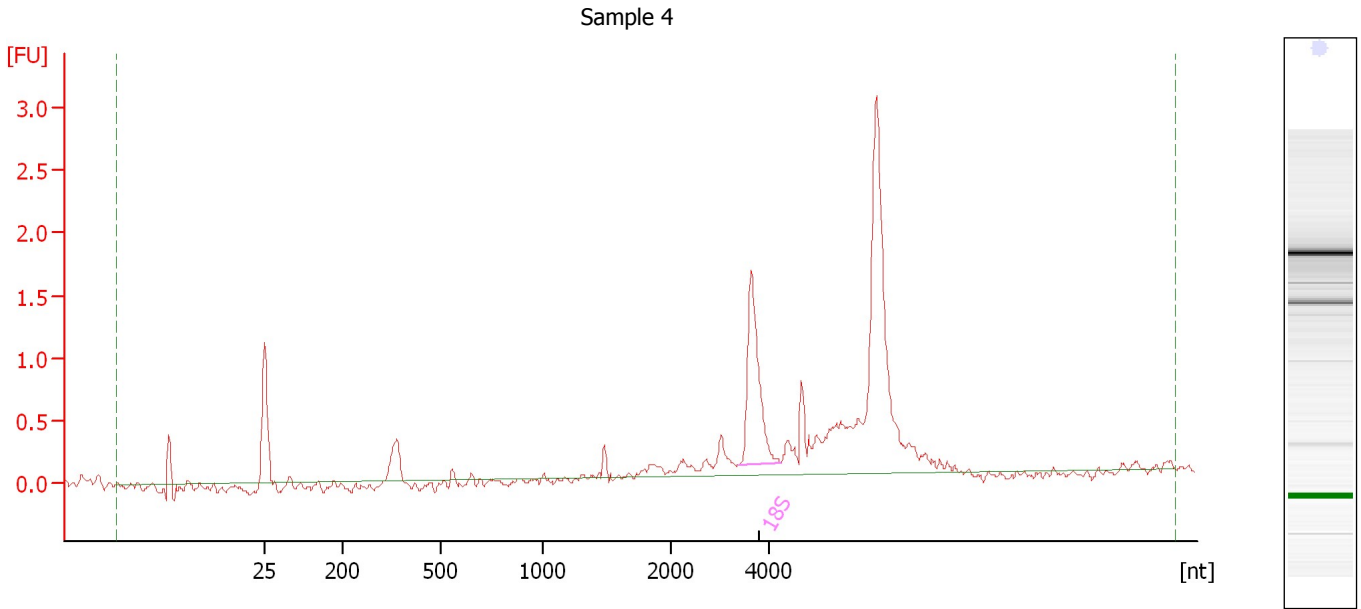
Fragment table for sample 3 : Sample 3

Name	Start Size [nt]	End Size [nt]	Area	% of total Area
18S	3,370	4,137	1.5	7.9
28S	7,707	7,882	1.6	8.5

Assay Class: Eukaryote Total RNA Nano
Data Path: C:\...ents and Settings\Bioanalyzer\2013-12-20\2013-12-20_002.xad

Created: 12/20/2013 4:39:43 PM
Modified: 12/20/2013 5:09:37 PM

Electropherogram Summary Continued ...



Overall Results for sample 4 : Sample 4

RNA Area:	11.1	RNA Integrity Number (RIN):	4.9 (B.02.08)
RNA Concentration:	31 ng/μl	Result Flagging Color:	
rRNA Ratio [28s / 18s]:	0.0	Result Flagging Label:	RIN: 4.90

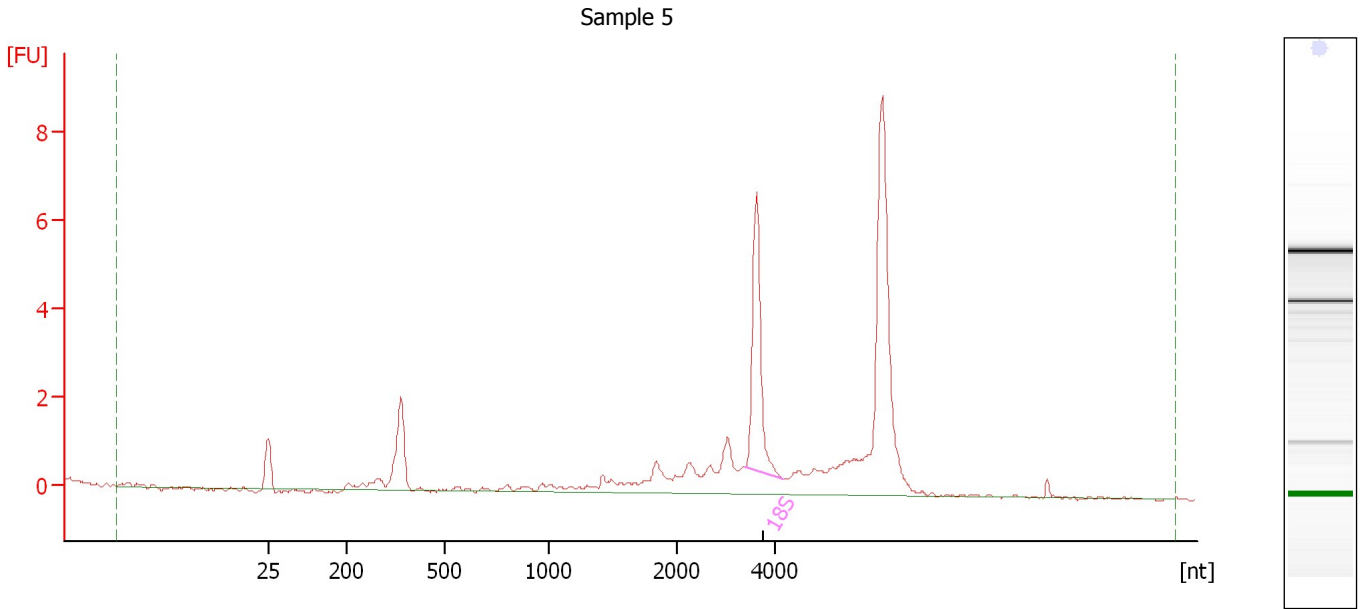
Fragment table for sample 4 : Sample 4

Name	Start Size [nt]	End Size [nt]	Area	% of total Area
18S	3,377	4,218	1.9	16.6

Assay Class: Eukaryote Total RNA Nano
Data Path: C:\...ents and Settings\Bioanalyzer\2013-12-20\2013-12-20_002.xad

Created: 12/20/2013 4:39:43 PM
Modified: 12/20/2013 5:09:37 PM

Electropherogram Summary Continued ...



Overall Results for sample 5 : Sample 5

RNA Area:	33.4	RNA Integrity Number (RIN):	5.5 (B.02.08)
RNA Concentration:	94 ng/μl	Result Flagging Color:	
rRNA Ratio [28s / 18s]:	0.0	Result Flagging Label:	RIN: 5.50

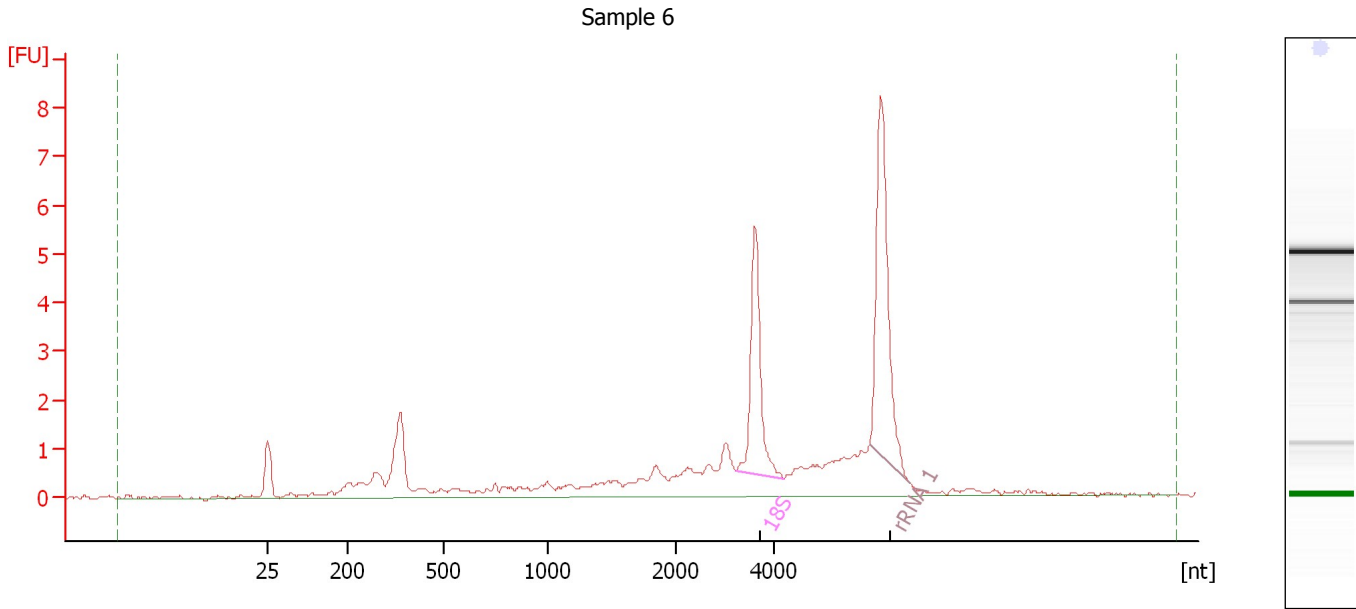
Fragment table for sample 5 : Sample 5

Name	Start Size [nt]	End Size [nt]	Area	% of total Area
18S	3,387	4,159	5.4	16.1

Assay Class: Eukaryote Total RNA Nano
 Data Path: C:\...ents and Settings\Bioanalyzer\2013-12-20\2013-12-20_002.xad

Created: 12/20/2013 4:39:43 PM
 Modified: 12/20/2013 5:09:37 PM

Electropherogram Summary Continued ...



Overall Results for sample 6 : Sample 6

RNA Area:	40.6	RNA Integrity Number (RIN):	5 (B.02.08)
RNA Concentration:	115 ng/μl	Result Flagging Color:	
rRNA Ratio [28s / 18s]:	0.0	Result Flagging Label:	RIN:5

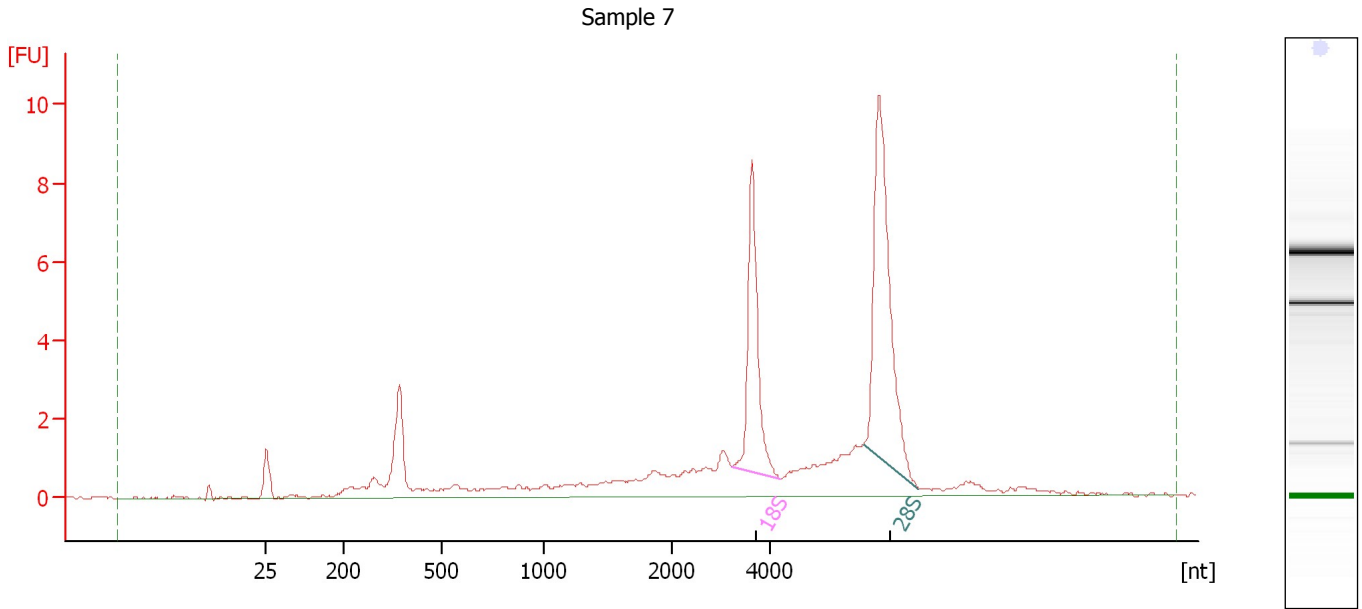
Fragment table for sample 6 : Sample 6

Name	Start Size [nt]	End Size [nt]	Area	% of total Area
18S	3,233	4,179	5.1	12.6
rRNA 1	5,898	6,700	8.3	20.4

Assay Class: Eukaryote Total RNA Nano
Data Path: C:\...ents and Settings\Bioanalyzer\2013-12-20\2013-12-20_002.xad

Created: 12/20/2013 4:39:43 PM
Modified: 12/20/2013 5:09:37 PM

Electropherogram Summary Continued ...



Overall Results for sample 7 : Sample 7

RNA Area: 58.5 RNA Integrity Number (RIN): 8 (B.02.08)
RNA Concentration: 165 ng/μl Result Flagging Color:
rRNA Ratio [28s / 18s]: 1.7 Result Flagging Label: RIN:8

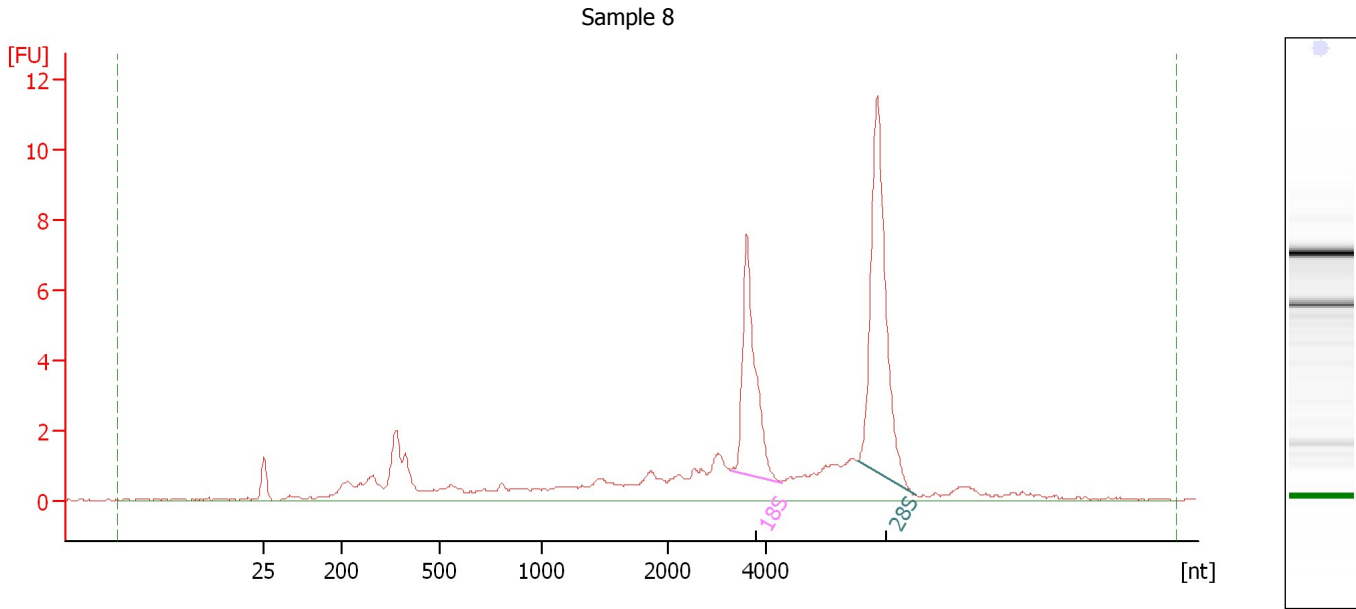
Fragment table for sample 7 : Sample 7

Name	Start Size [nt]	End Size [nt]	Area	% of total Area
18S	3,226	4,196	8.2	14.0
28S	5,879	6,979	14.1	24.0

Assay Class: Eukaryote Total RNA Nano
Data Path: C:\...ents and Settings\Bioanalyzer\2013-12-20\2013-12-20_002.xad

Created: 12/20/2013 4:39:43 PM
Modified: 12/20/2013 5:09:37 PM

Electropherogram Summary Continued ...



Overall Results for sample 8 : Sample 8

RNA Area:	65.6	RNA Integrity Number (RIN):	8.2 (B.02.08)
RNA Concentration:	185 ng/μl	Result Flagging Color:	
rRNA Ratio [28s / 18s]:	1.7	Result Flagging Label:	RIN: 8.20

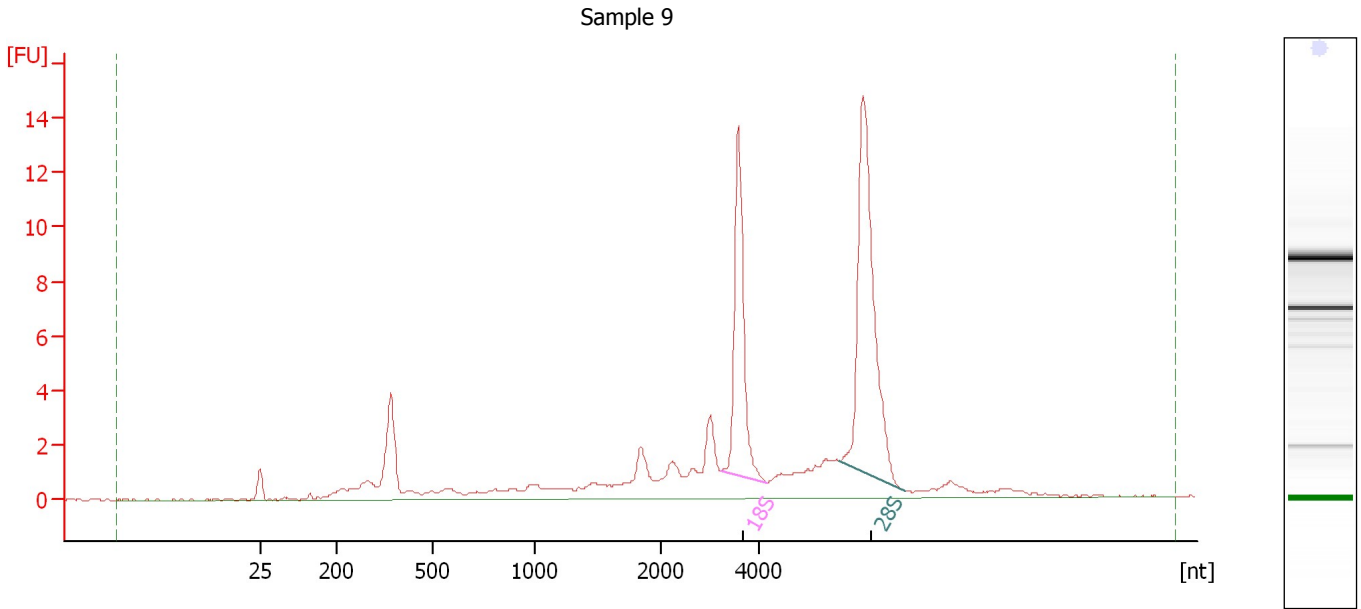
Fragment table for sample 8 : Sample 8

Name	Start Size [nt]	End Size [nt]	Area	% of total Area
18S	3,283	4,301	9.1	13.9
28S	5,838	7,007	15.6	23.8

Assay Class: Eukaryote Total RNA Nano
Data Path: C:\...ents and Settings\Bioanalyzer\2013-12-20\2013-12-20_002.xad

Created: 12/20/2013 4:39:43 PM
Modified: 12/20/2013 5:09:37 PM

Electropherogram Summary Continued ...



Overall Results for sample 9 : Sample 9

RNA Area:	81.1	RNA Integrity Number (RIN):	7.8 (B.02.08)
RNA Concentration:	229 ng/μl	Result Flagging Color:	
rRNA Ratio [28s / 18s]:	1.7	Result Flagging Label:	RIN: 7.80

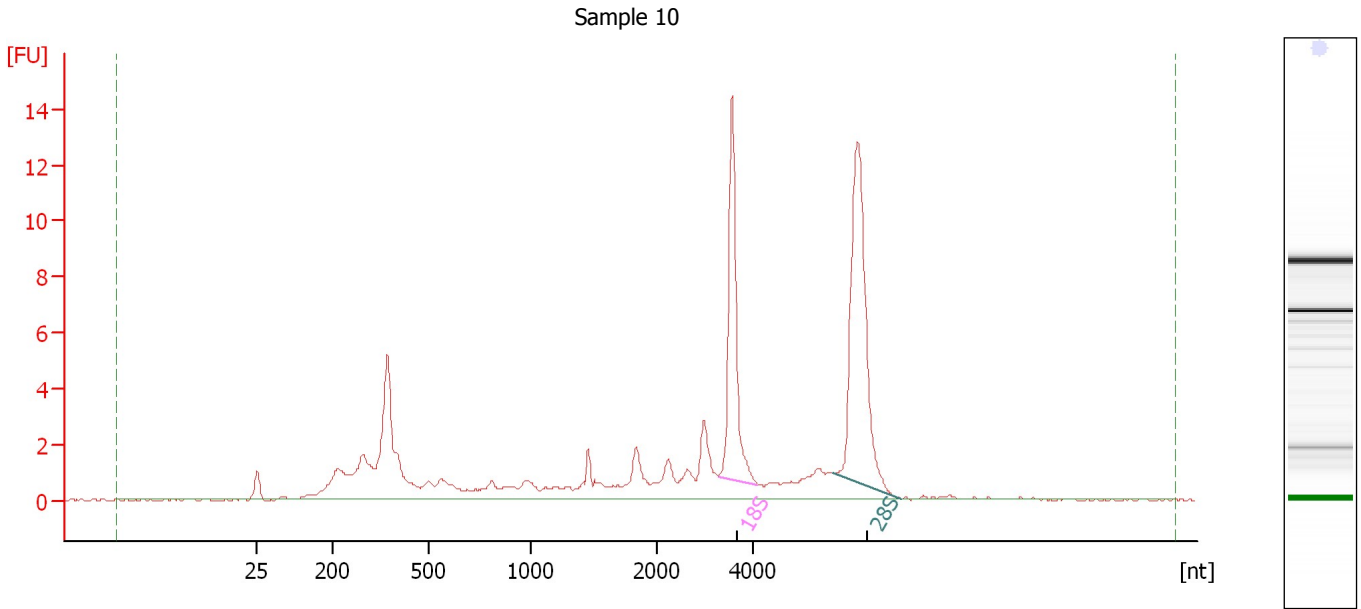
Fragment table for sample 9 : Sample 9

Name	Start Size [nt]	End Size [nt]	Area	% of total Area
18S	3,206	4,143	12.5	15.4
28S	5,624	6,952	21.2	26.2

Assay Class: Eukaryote Total RNA Nano
Data Path: C:\...ents and Settings\Bioanalyzer\2013-12-20\2013-12-20_002.xad

Created: 12/20/2013 4:39:43 PM
Modified: 12/20/2013 5:09:37 PM

Electropherogram Summary Continued ...



Overall Results for sample 10 : Sample 10

RNA Area:	83.7	RNA Integrity Number (RIN):	7.4 (B.02.08)
RNA Concentration:	237 ng/μl	Result Flagging Color:	
rRNA Ratio [28s / 18s]:	1.5	Result Flagging Label:	RIN: 7.40

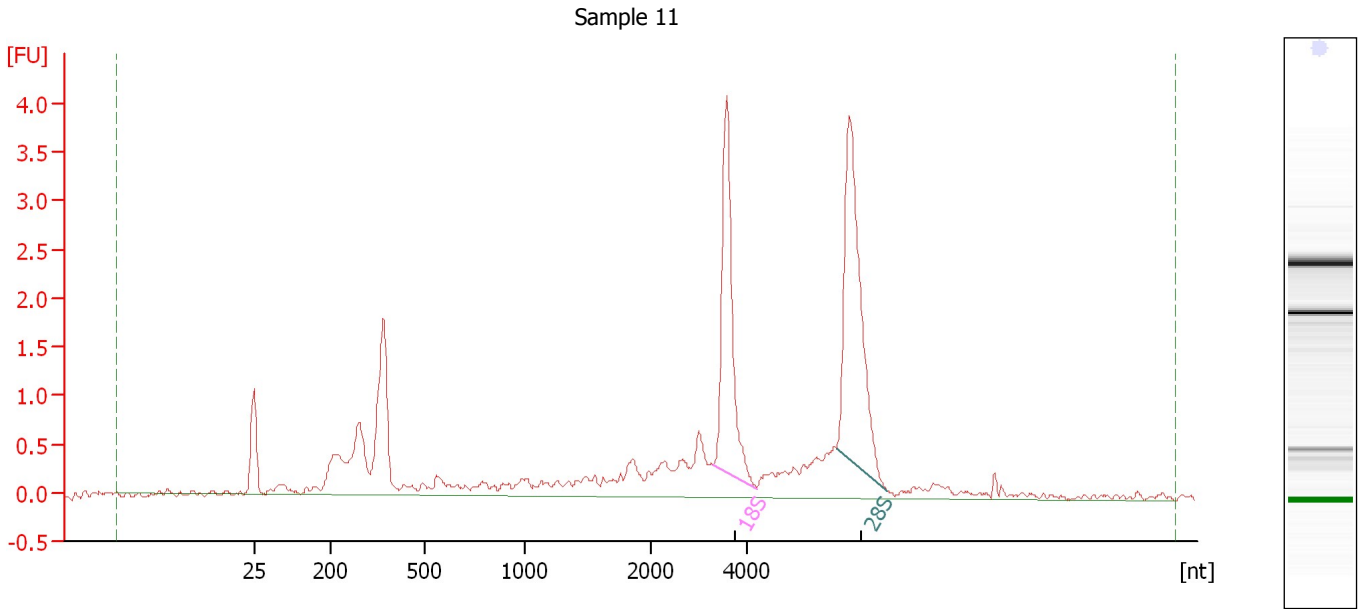
Fragment table for sample 10 : Sample 10

Name	Start Size [nt]	End Size [nt]	Area	% of total Area
18S	3,282	4,071	12.2	14.5
28S	5,626	7,006	18.0	21.5

Assay Class: Eukaryote Total RNA Nano
Data Path: C:\...ents and Settings\Bioanalyzer\2013-12-20\2013-12-20_002.xad

Created: 12/20/2013 4:39:43 PM
Modified: 12/20/2013 5:09:37 PM

Electropherogram Summary Continued ...



Overall Results for sample 11 : Sample 11

RNA Area:	27.8	RNA Integrity Number (RIN):	7.8 (B.02.08)
RNA Concentration:	79 ng/μl	Result Flagging Color:	
rRNA Ratio [28s / 18s]:	1.3	Result Flagging Label:	RIN: 7.80

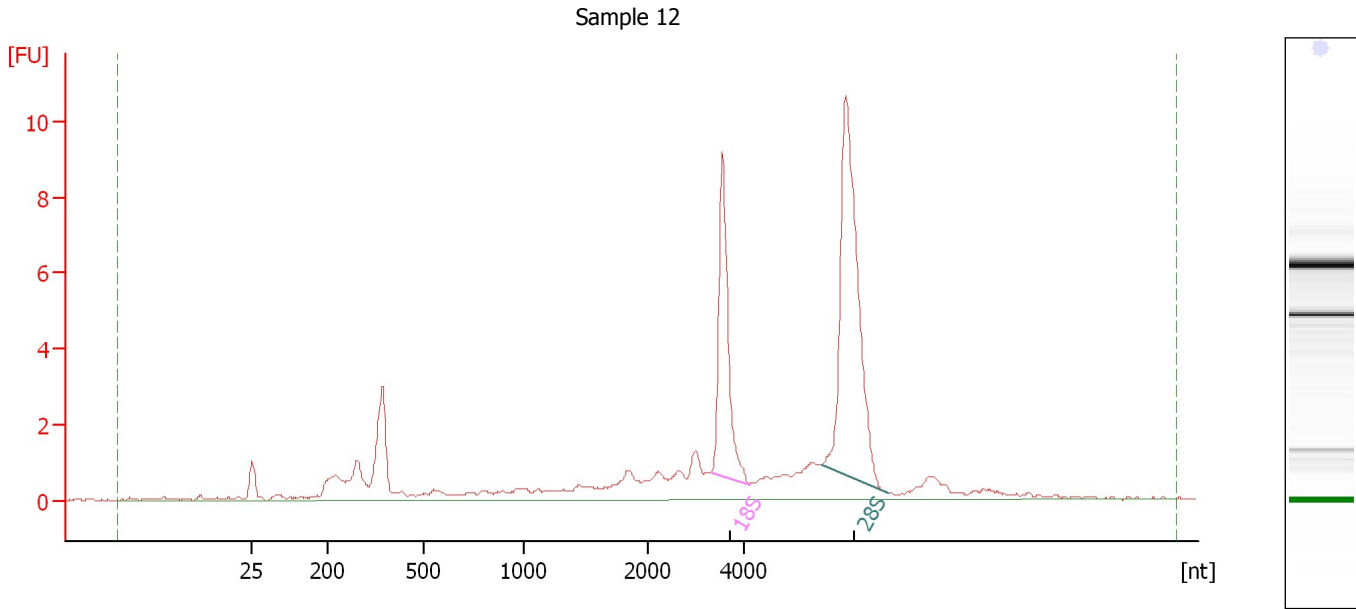
Fragment table for sample 11 : Sample 11

Name	Start Size [nt]	End Size [nt]	Area	% of total Area
18S	3,271	4,174	4.3	15.3
28S	5,826	6,862	5.6	20.2

Assay Class: Eukaryote Total RNA Nano
Data Path: C:\...ents and Settings\Bioanalyzer\2013-12-20\2013-12-20_002.xad

Created: 12/20/2013 4:39:43 PM
Modified: 12/20/2013 5:09:37 PM

Electropherogram Summary Continued ...



Overall Results for sample 12 : Sample 12

RNA Area:	62.1	RNA Integrity Number (RIN):	8.3 (B.02.08)
RNA Concentration:	175 ng/μl	Result Flagging Color:	
rRNA Ratio [28s / 18s]:	2.0	Result Flagging Label:	RIN: 8.30

Fragment table for sample 12 : Sample 12

Name	Start Size [nt]	End Size [nt]	Area	% of total Area
18S	3,308	4,104	8.8	14.2
28S	5,608	6,957	17.6	28.3

Assay Class: Eukaryote Total RNA Nano
Data Path: C:\...ents and Settings\Bioanalyzer\2013-12-20\2013-12-20_002.xad

Created: 12/20/2013 4:39:43 PM
Modified: 12/20/2013 5:09:37 PM

Gel Image

