

Assay Class: High Sensitivity DNA Assay
Data Path: C:\...ents and Settings\Bioanalyzer\2013-12-23\2013-12-23_001.xad

Created: 12/23/2013 10:55:59 AM
Modified: 12/23/2013 11:37:23 AM

Electrophoresis File Run Summary

Instrument Information:

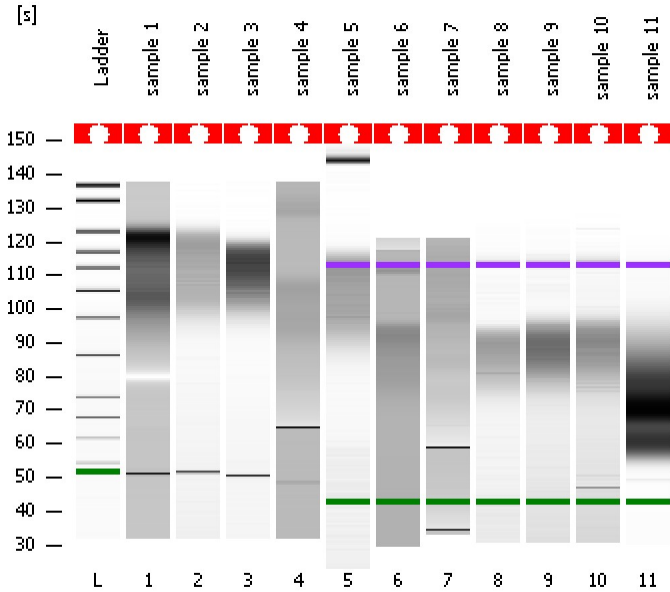
Instrument Name: DE13701086 Firmware: C.01.069
Serial#: DE13701086 Type: G2938B

Assay Information:

Assay Origin Path: C:\Program Files\Agilent\2100 bioanalyzer\2100 expert\assays\dsDNA\High Sensitivity DNA.xsy
Assay Class: High Sensitivity DNA Assay
Version: 1.03
Assay Comments: Copyright © 2003-2010 Agilent Technologies

Chip Information:

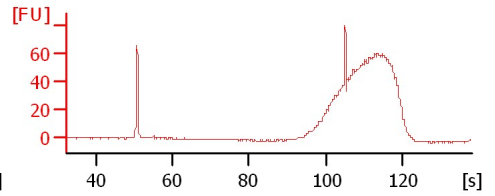
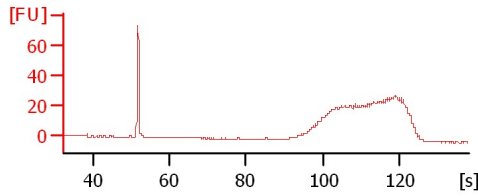
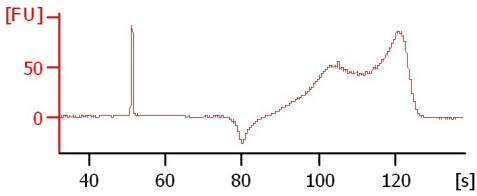
Chip Lot #: Reagent Kit Lot #: Chip Comments:



sample 1

sample 2

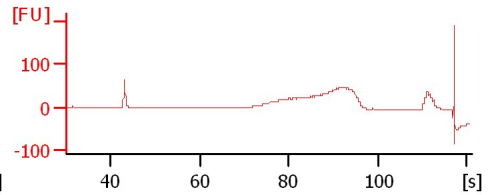
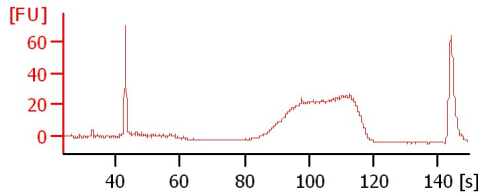
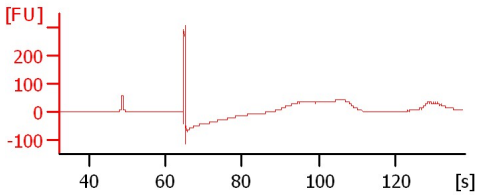
sample 3



sample 4

sample 5

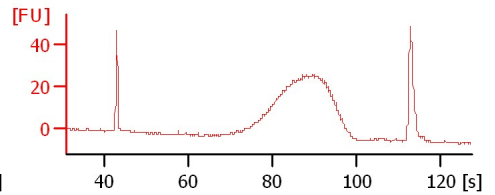
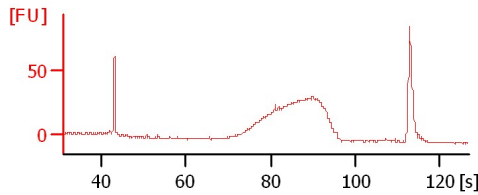
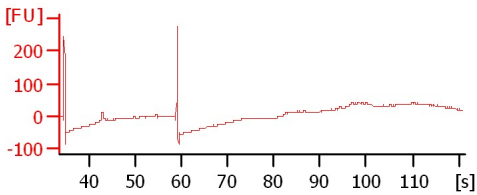
sample 6



sample 7

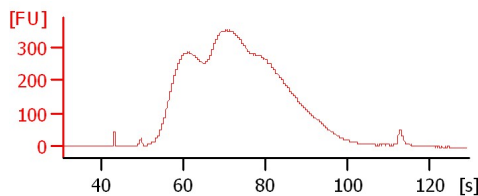
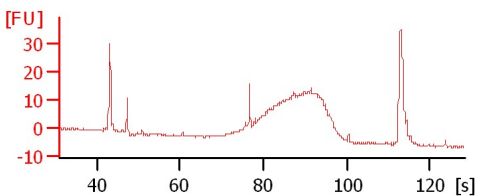
sample 8

sample 9



sample 10

sample 11



Assay Class: High Sensitivity DNA Assay
Data Path: C:\...ents and Settings\Bioanalyzer\2013-12-23\2013-12-23_001.xad

Created: 12/23/2013 10:55:59 AM
Modified: 12/23/2013 11:37:23 AM

Electrophoresis File Run Summary (Chip Summary)

Sample Name	Sample Comment	Rest. Digest	Status	Observation	Result Label	Result Color
sample 1		<input type="checkbox"/>	✓			
sample 2		<input type="checkbox"/>	✓			
sample 3		<input type="checkbox"/>	✓			
sample 4		<input type="checkbox"/>	✓			
sample 5		<input type="checkbox"/>	✓			
sample 6		<input type="checkbox"/>	✓			
sample 7		<input type="checkbox"/>	✓			
sample 8		<input type="checkbox"/>	✓			
sample 9		<input type="checkbox"/>	✓			
sample 10		<input type="checkbox"/>	✓			
sample 11		<input type="checkbox"/>	✓			
Ladder		<input type="checkbox"/>	✓			

Chip Lot #

Reagent Kit Lot #

Chip Comments :

Assay Class: High Sensitivity DNA Assay
Data Path: C:\...ents and Settings\Bioanalyzer\2013-12-23\2013-12-23_001.xad

Created: 12/23/2013 10:55:59 AM
Modified: 12/23/2013 11:37:23 AM

Electrophoresis Assay Details

General Analysis Settings

Number of Available Sample and Ladder Wells (Max.) : 12
Minimum Visible Range [s] : 32
Maximum Visible Range [s] : 138
Start Analysis Time Range [s] : 33
End Analysis Time Range [s] : 137.5
Ladder Concentration [pg/μl] : 1950
Uses Standard Area for Ladder Fragments
Lower Marker Concentration [pg/μl] : 125
Upper Marker Concentration [pg/μl] : 75
Used Upper Marker for Quantitation
Standard Curve Fit is Point to Point
Show Data Aligned to Lower and Upper Marker

Integrator Settings

Integration Start Time [s] : 33.05
Integration End Time [s] : 137
Slope Threshold : 0.8
Height Threshold [FU] : 5
Area Threshold : 0.1
Width Threshold [s] : 0.6
Baseline Plateau [s] : 0.5

Filter Settings

Filter Width [s] : 0.5
Polynomial Order : 4

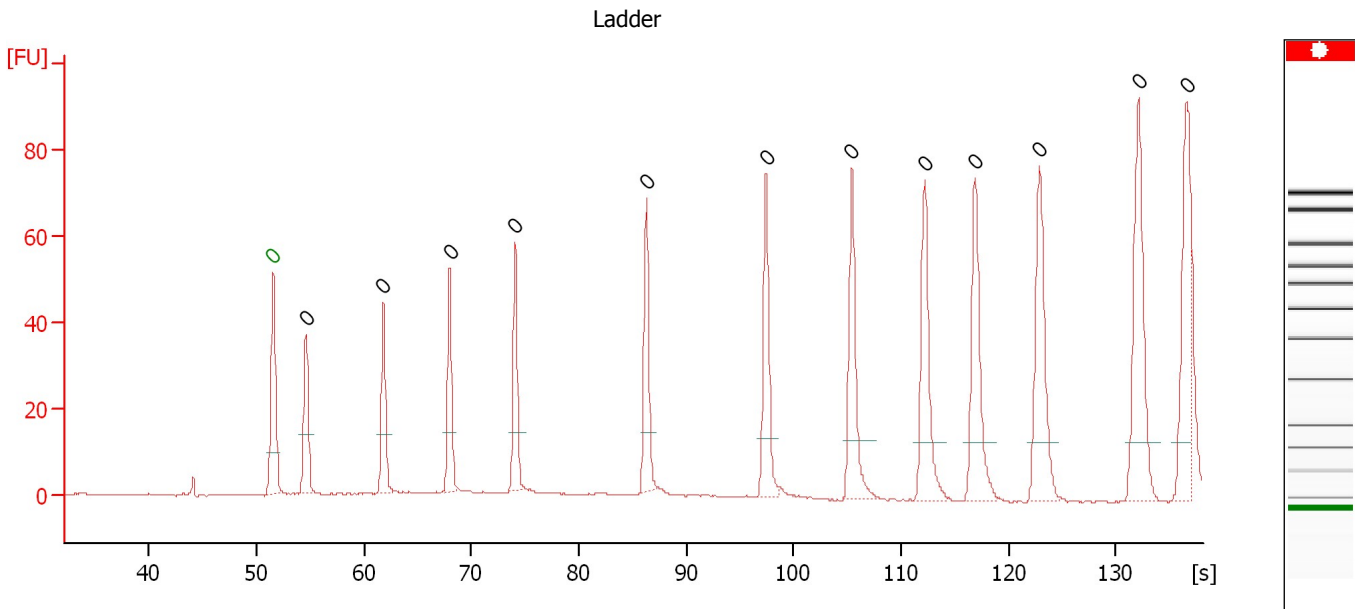
Ladder

Ladder Peak	Size	Area
1	35	160
2	50	210
3	100	208
4	150	221
5	200	242
6	300	270
7	400	305
8	500	306
9	600	336
10	700	321
11	1000	366
12	2000	413
13	3000	411
14	7000	400
15	10380	214

Assay Class: High Sensitivity DNA Assay
 Data Path: C:\...ents and Settings\Bioanalyzer\2013-12-23\2013-12-23_001.xad

Created: 12/23/2013 10:55:59 AM
 Modified: 12/23/2013 11:37:23 AM

Electropherogram Summary



Overall Results for Ladder

Noise: 0.2

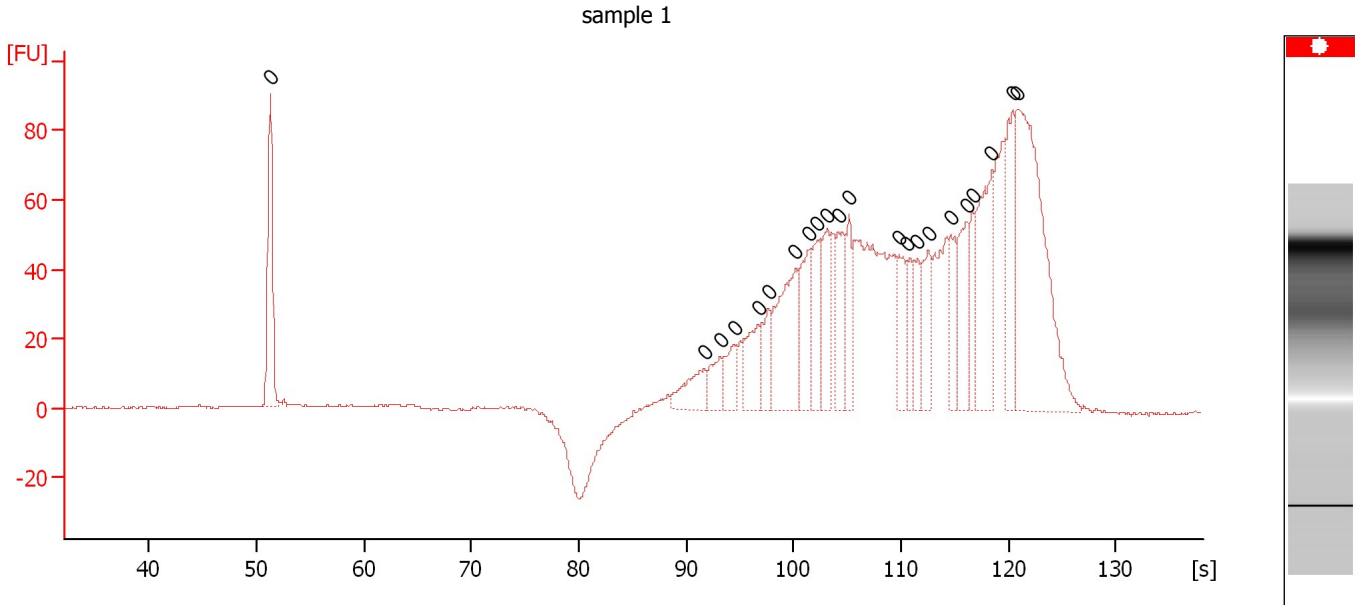
Peak table for Ladder

Peak	Aligned Migration Time [s]	Size [bp]	Conc. [pg/μl]	Molarity [pmol/l]	Observations
1	51.55	0	0.00	0.0	Lower Marker
2	54.60	0	0.00	0.0	Ladder Peak
3	61.80	0	0.00	0.0	Ladder Peak
4	68.00	0	0.00	0.0	Ladder Peak
5	74.10	0	0.00	0.0	Ladder Peak
6	86.30	0	0.00	0.0	Ladder Peak
7	97.45	0	0.00	0.0	Ladder Peak
8	105.40	0	0.00	0.0	Ladder Peak
9	112.20	0	0.00	0.0	Ladder Peak
10	116.90	0	0.00	0.0	Ladder Peak
11	122.90	0	0.00	0.0	Ladder Peak
12	132.10	0	0.00	0.0	Ladder Peak
13	136.60	0	0.00	0.0	Ladder Peak

Assay Class: High Sensitivity DNA Assay
 Data Path: C:\...ents and Settings\Bioanalyzer\2013-12-23\2013-12-23_001.xad

Created: 12/23/2013 10:55:59 AM
 Modified: 12/23/2013 11:37:23 AM

Electropherogram Summary Continued ...



Overall Results for sample 1 : sample 1

Number of peaks found: 0 Noise: 0.3

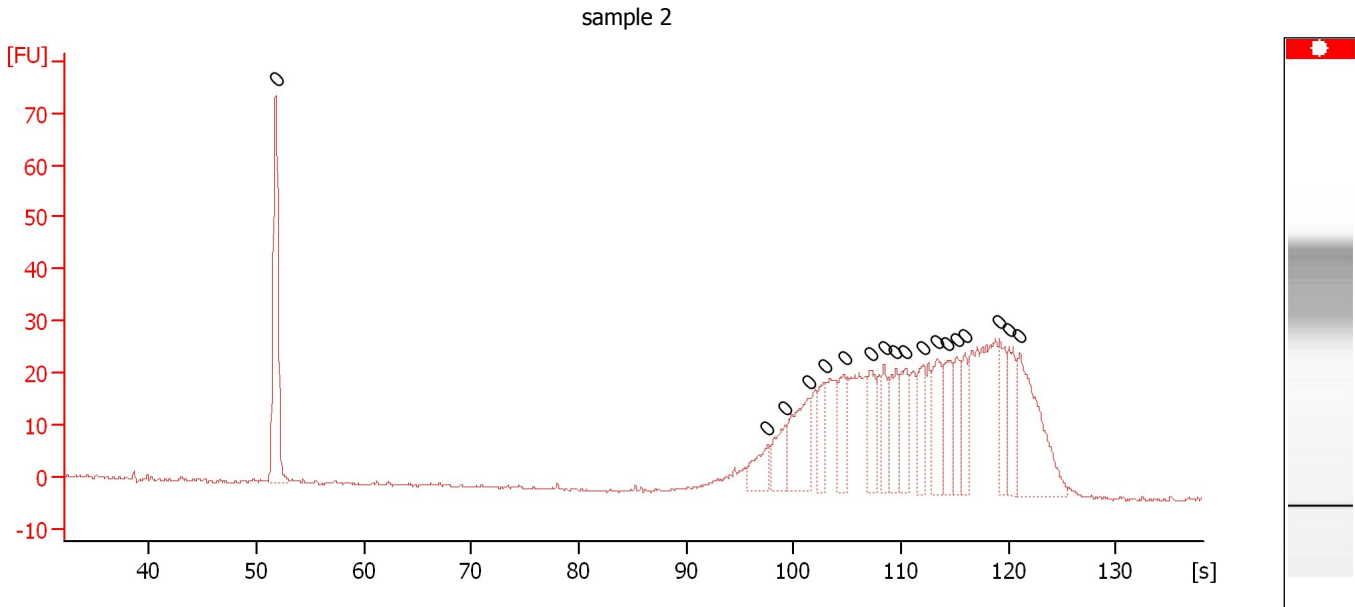
Peak table for sample 1 : sample 1

Peak	Aligned Migration Time [s]	Size [bp]	Conc. [pg/μl]	Molarity [pmol/l]	Observations
1	51.25	0	0.00	0.0	
2	91.65	0	0.00	0.0	
3	93.15	0	0.00	0.0	
4	94.50	0	0.00	0.0	
5	96.70	0	0.00	0.0	
6	97.70	0	0.00	0.0	
7	100.20	0	0.00	0.0	
8	101.40	0	0.00	0.0	
9	102.25	0	0.00	0.0	
10	103.05	0	0.00	0.0	
11	104.15	0	0.00	0.0	
12	105.15	0	0.00	0.0	
13	109.80	0	0.00	0.0	
14	110.60	0	0.00	0.0	
15	111.50	0	0.00	0.0	
16	112.55	0	0.00	0.0	
17	114.65	0	0.00	0.0	
18	116.10	0	0.00	0.0	
19	116.70	0	0.00	0.0	
20	118.45	0	0.00	0.0	
21	120.40	0	0.00	0.0	
22	120.85	0	0.00	0.0	

Assay Class: High Sensitivity DNA Assay
 Data Path: C:\...ents and Settings\Bioanalyzer\2013-12-23\2013-12-23_001.xad

Created: 12/23/2013 10:55:59 AM
 Modified: 12/23/2013 11:37:23 AM

Electropherogram Summary Continued ...



Overall Results for sample 2 : sample 2

Number of peaks found: 0 Noise: 0.3

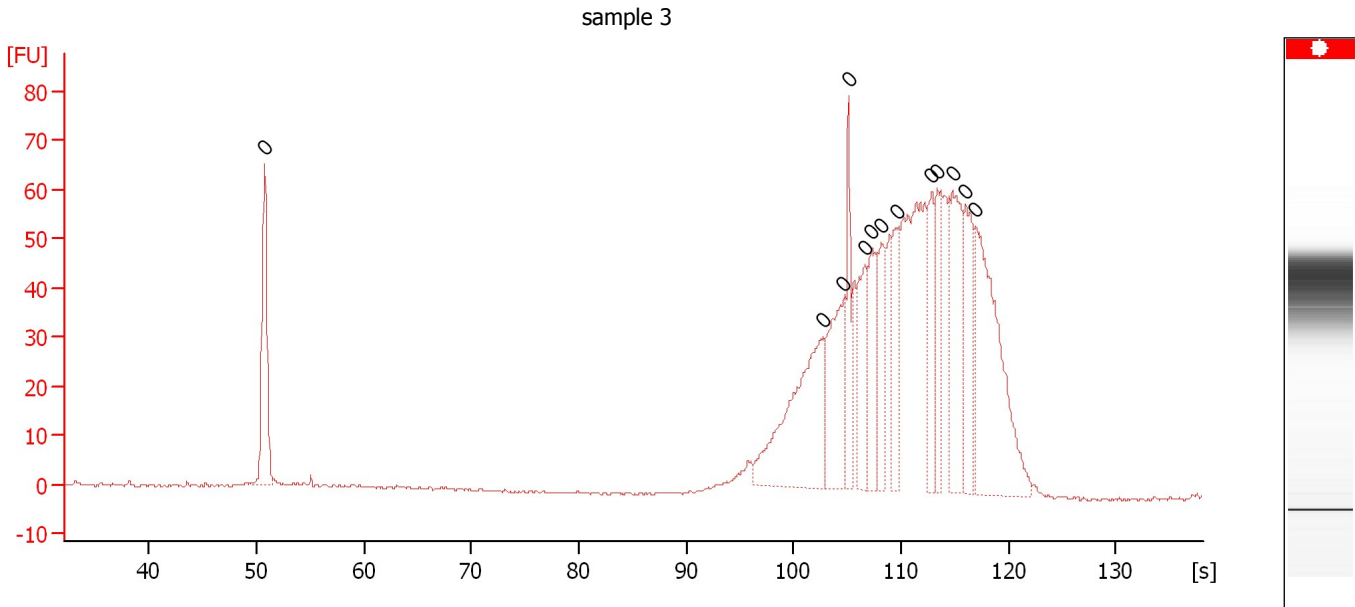
Peak table for sample 2 : sample 2

Peak	Aligned Migration Time [s]	Size [bp]	Conc. [pg/μl]	Molarity [pmol/l]	Observations
1	51.80	0	0.00	0.0	
2	97.60	0	0.00	0.0	
3	99.20	0	0.00	0.0	
4	101.40	0	0.00	0.0	
5	102.85	0	0.00	0.0	
6	104.70	0	0.00	0.0	
7	107.15	0	0.00	0.0	
8	108.45	0	0.00	0.0	
9	109.50	0	0.00	0.0	
10	110.40	0	0.00	0.0	
11	112.05	0	0.00	0.0	
12	113.35	0	0.00	0.0	
13	114.25	0	0.00	0.0	
14	115.15	0	0.00	0.0	
15	115.95	0	0.00	0.0	
16	119.15	0	0.00	0.0	
17	120.10	0	0.00	0.0	
18	121.05	0	0.00	0.0	

Assay Class: High Sensitivity DNA Assay
 Data Path: C:\...ents and Settings\Bioanalyzer\2013-12-23\2013-12-23_001.xad

Created: 12/23/2013 10:55:59 AM
 Modified: 12/23/2013 11:37:23 AM

Electropherogram Summary Continued ...



Overall Results for sample 3 : sample 3

Number of peaks found: 0 Noise: 0.2

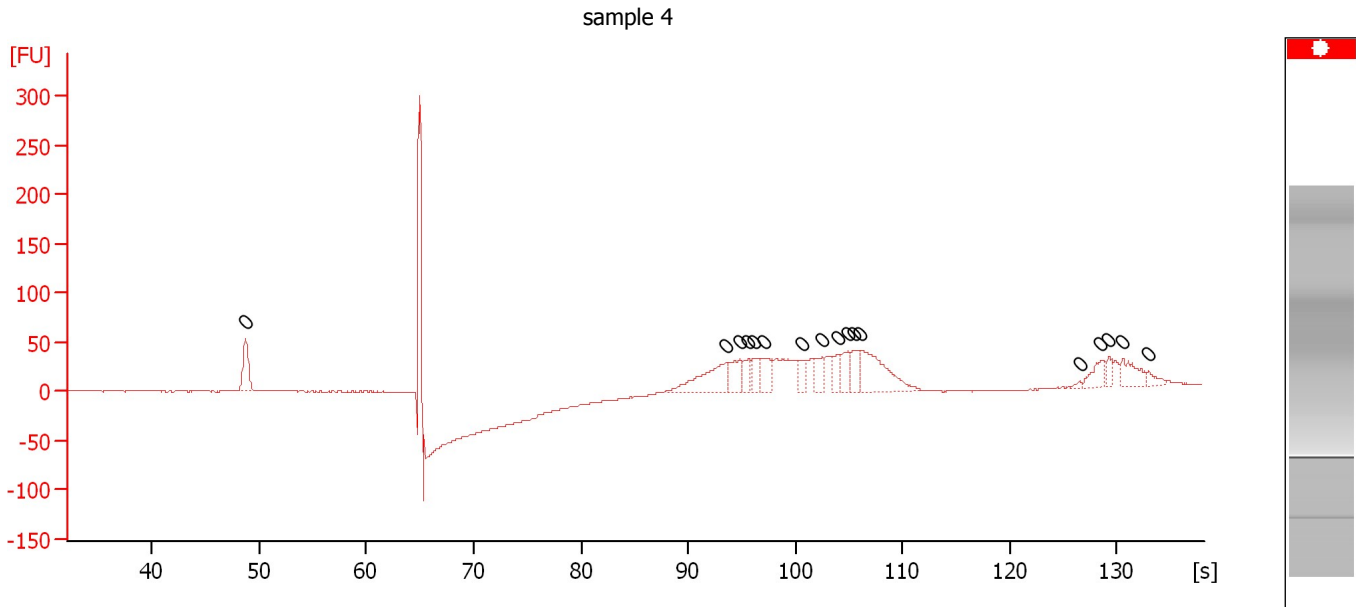
Peak table for sample 3 : sample 3

Peak	Aligned Migration Time [s]	Size [bp]	Conc. [pg/μl]	Molarity [pmol/l]	Observations
1	50.75	0	0.00	0.0	
2	102.70	0	0.00	0.0	
3	104.65	0	0.00	0.0	
4	105.10	0	0.00	0.0	
5	106.65	0	0.00	0.0	
6	107.20	0	0.00	0.0	
7	108.15	0	0.00	0.0	
8	109.65	0	0.00	0.0	
9	112.85	0	0.00	0.0	
10	113.35	0	0.00	0.0	
11	114.80	0	0.00	0.0	
12	116.00	0	0.00	0.0	
13	116.90	0	0.00	0.0	

Assay Class: High Sensitivity DNA Assay
 Data Path: C:\...ents and Settings\Bioanalyzer\2013-12-23\2013-12-23_001.xad

Created: 12/23/2013 10:55:59 AM
 Modified: 12/23/2013 11:37:23 AM

Electropherogram Summary Continued ...



Overall Results for sample 4 : sample 4

Number of peaks found: 0 Noise: 0.3

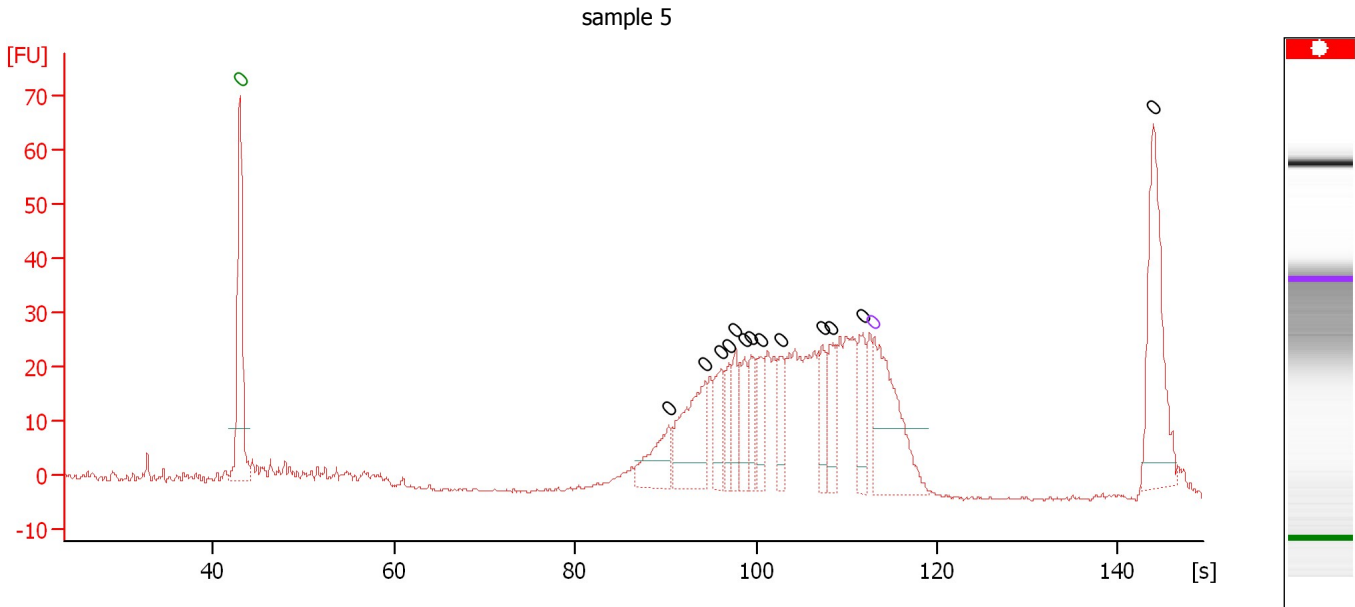
Peak table for sample 4 : sample 4

Peak	Aligned Migration Time [s]	Size [bp]	Conc. [pg/μl]	Molarity [pmol/l]	Observations
1	48.75	0	0.00	0.0	
2	93.55	0	0.00	0.0	
3	94.80	0	0.00	0.0	
4	95.65	0	0.00	0.0	
5	96.15	0	0.00	0.0	
6	97.05	0	0.00	0.0	
7	100.55	0	0.00	0.0	
8	102.45	0	0.00	0.0	
9	103.95	0	0.00	0.0	
10	104.90	0	0.00	0.0	
11	105.40	0	0.00	0.0	
12	106.10	0	0.00	0.0	
13	126.55	0	0.00	0.0	
14	128.50	0	0.00	0.0	
15	129.25	0	0.00	0.0	
16	130.55	0	0.00	0.0	
17	132.95	0	0.00	0.0	

Assay Class: High Sensitivity DNA Assay
 Data Path: C:\...ents and Settings\Bioanalyzer\2013-12-23\2013-12-23_001.xad

Created: 12/23/2013 10:55:59 AM
 Modified: 12/23/2013 11:37:23 AM

Electropherogram Summary Continued ...



Overall Results for sample 5 : sample 5

Number of peaks found: 13 Noise: 0.3

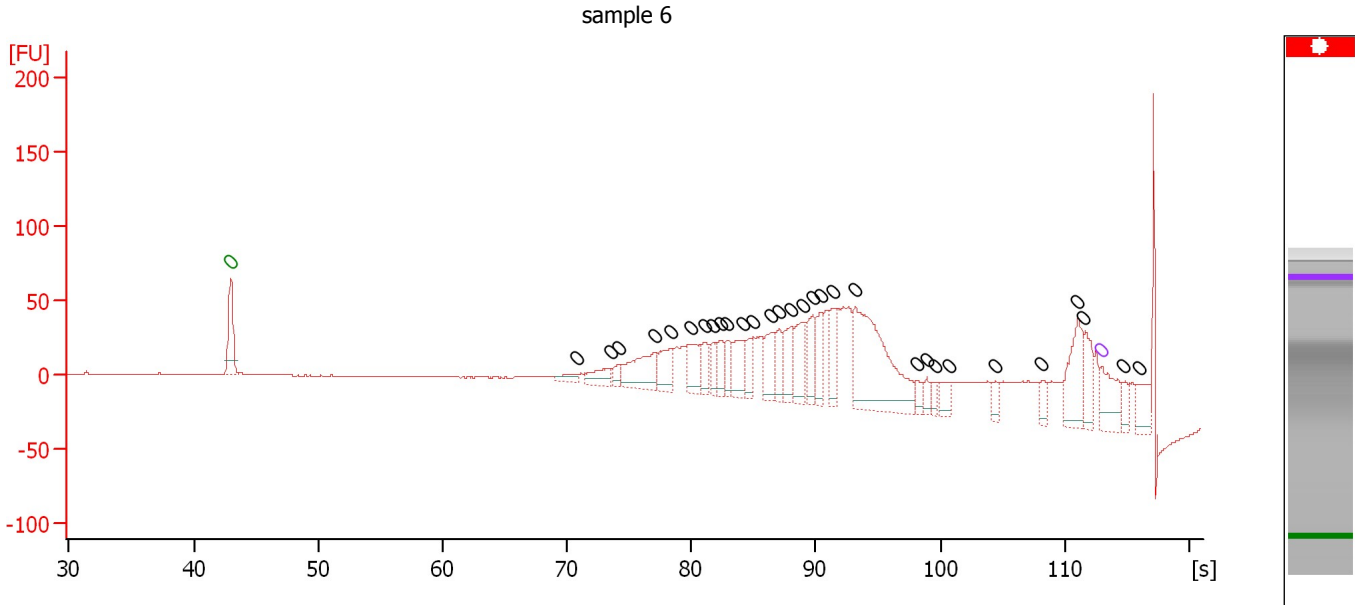
Peak table for sample 5 : sample 5

Peak	Aligned Migration Time [s]	Size [bp]	Conc. [pg/μl]	Molarity [pmol/l]	Observations
1	43.00	0	0.00	0.0	Lower Marker
2	90.34	0	0.00	0.0	
3	94.43	0	0.00	0.0	
4	96.21	0	0.00	0.0	
5	96.98	0	0.00	0.0	
6	97.69	0	0.00	0.0	
7	98.76	0	0.00	0.0	
8	99.42	0	0.00	0.0	
9	100.48	0	0.00	0.0	
10	102.68	0	0.00	0.0	
11	107.36	0	0.00	0.0	
12	108.25	0	0.00	0.0	
13	111.81	0	0.00	0.0	
14	113.00	0	0.00	0.0	Upper Marker
15	143.91	0	0.00	0.0	

Assay Class: High Sensitivity DNA Assay
 Data Path: C:\...ents and Settings\Bioanalyzer\2013-12-23\2013-12-23_001.xad

Created: 12/23/2013 10:55:59 AM
 Modified: 12/23/2013 11:37:23 AM

Electropherogram Summary Continued ...



Overall Results for sample 6 : sample 6

Number of peaks found: 30 Noise: 0.2

Peak table for sample 6 : sample 6

Peak	Aligned Migration Time [s]	Size [bp]	Conc. [pg/μl]	Molarity [pmol/l]	Observations
1	43.00	0	0.00	0.0	Lower Marker
2	70.78	0	0.00	0.0	
3	73.54	0	0.00	0.0	
4	74.14	0	0.00	0.0	
5	77.07	0	0.00	0.0	
6	78.41	0	0.00	0.0	
7	80.00	0	0.00	0.0	
8	81.08	0	0.00	0.0	
9	81.77	0	0.00	0.0	
10	82.37	0	0.00	0.0	
11	82.89	0	0.00	0.0	
12	84.10	0	0.00	0.0	
13	84.96	0	0.00	0.0	
14	86.46	0	0.00	0.0	
15	87.11	0	0.00	0.0	
16	88.02	0	0.00	0.0	
17	88.92	0	0.00	0.0	
18	89.74	0	0.00	0.0	
19	90.34	0	0.00	0.0	
20	91.42	0	0.00	0.0	
21	93.14	0	0.00	0.0	
22	98.14	0	0.00	0.0	
23	98.91	0	0.00	0.0	
24	99.52	0	0.00	0.0	
25	100.64	0	0.00	0.0	
26	104.43	0	0.00	0.0	
27	108.18	0	0.00	0.0	

Assay Class: High Sensitivity DNA Assay
Data Path: C:\...ents and Settings\Bioanalyzer\2013-12-23\2013-12-23_001.xad

Created: 12/23/2013 10:55:59 AM
Modified: 12/23/2013 11:37:23 AM

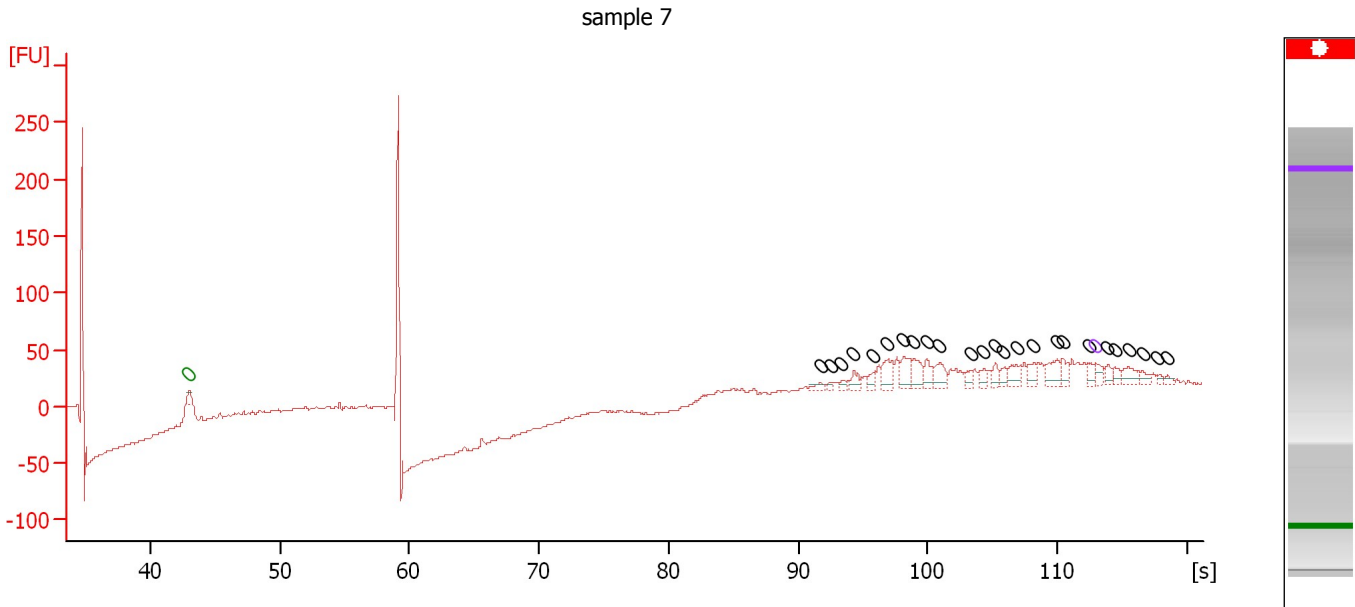
Electropherogram Summary Continued ...**... Peak table for sample 6 : sample 6**

Peak	Aligned Migration Time [s]	Size [bp]	Conc. [pg/μl]	Molarity [pmol/l]	Observations
28	111.06	0	0.00	0.0	
29	111.54	0	0.00	0.0	
30	113.00	0	0.00	0.0	Upper Marker
31	114.64	0	0.00	0.0	
32	115.93	0	0.00	0.0	

Assay Class: High Sensitivity DNA Assay
 Data Path: C:\...ents and Settings\Bioanalyzer\2013-12-23\2013-12-23_001.xad

Created: 12/23/2013 10:55:59 AM
 Modified: 12/23/2013 11:37:23 AM

Electropherogram Summary Continued ...



Overall Results for sample 7 : sample 7

Number of peaks found: 25 Noise: 0.6

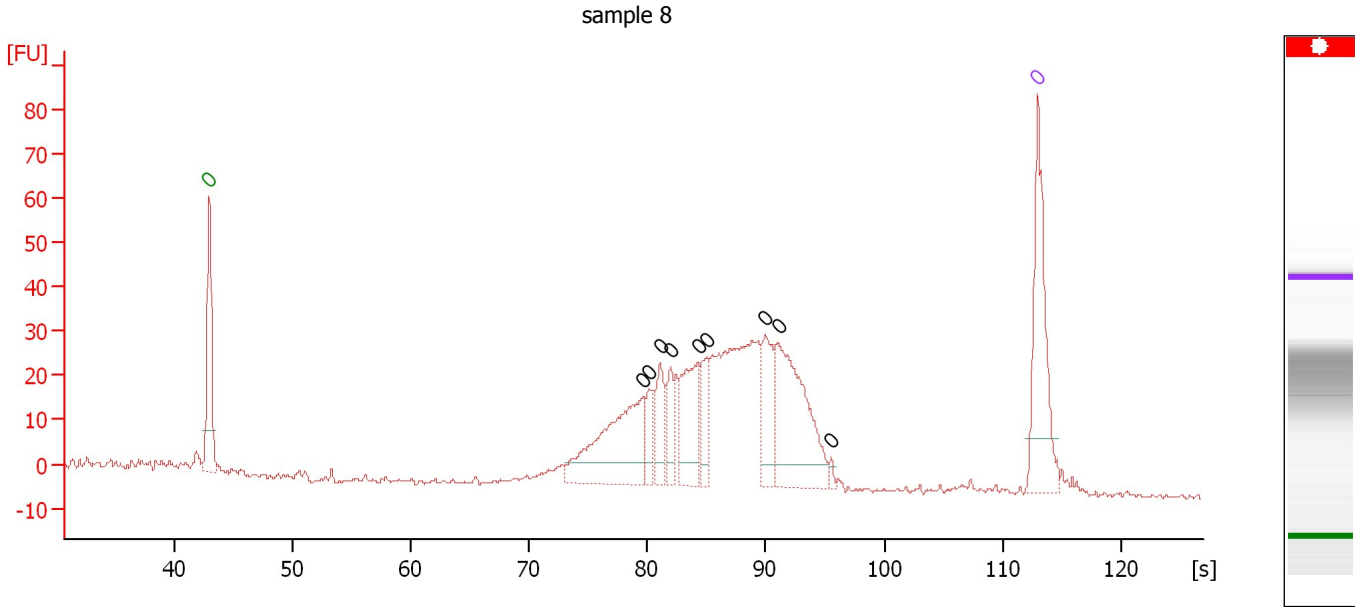
Peak table for sample 7 : sample 7

Peak	Aligned Migration Time [s]	Size [bp]	Conc. [pg/μl]	Molarity [pmol/l]	Observations
1	43.00	0	0.00	0.0	Lower Marker
2	91.69	0	0.00	0.0	
3	92.52	0	0.00	0.0	
4	93.35	0	0.00	0.0	
5	94.30	0	0.00	0.0	
6	95.83	0	0.00	0.0	
7	96.91	0	0.00	0.0	
8	98.11	0	0.00	0.0	
9	98.89	0	0.00	0.0	
10	99.89	0	0.00	0.0	
11	100.88	0	0.00	0.0	
12	103.28	0	0.00	0.0	
13	104.27	0	0.00	0.0	
14	105.22	0	0.00	0.0	
15	105.80	0	0.00	0.0	
16	106.84	0	0.00	0.0	
17	108.16	0	0.00	0.0	
18	110.02	0	0.00	0.0	
19	110.48	0	0.00	0.0	
20	112.42	0	0.00	0.0	
21	113.00	0	0.00	0.0	Upper Marker
22	113.87	0	0.00	0.0	
23	114.49	0	0.00	0.0	
24	115.48	0	0.00	0.0	
25	116.56	0	0.00	0.0	
26	117.72	0	0.00	0.0	
27	118.50	0	0.00	0.0	

Assay Class: High Sensitivity DNA Assay
 Data Path: C:\...ents and Settings\Bioanalyzer\2013-12-23\2013-12-23_001.xad

Created: 12/23/2013 10:55:59 AM
 Modified: 12/23/2013 11:37:23 AM

Electropherogram Summary Continued ...



Overall Results for sample 8 : sample 8

Number of peaks found: 9 Noise: 0.5

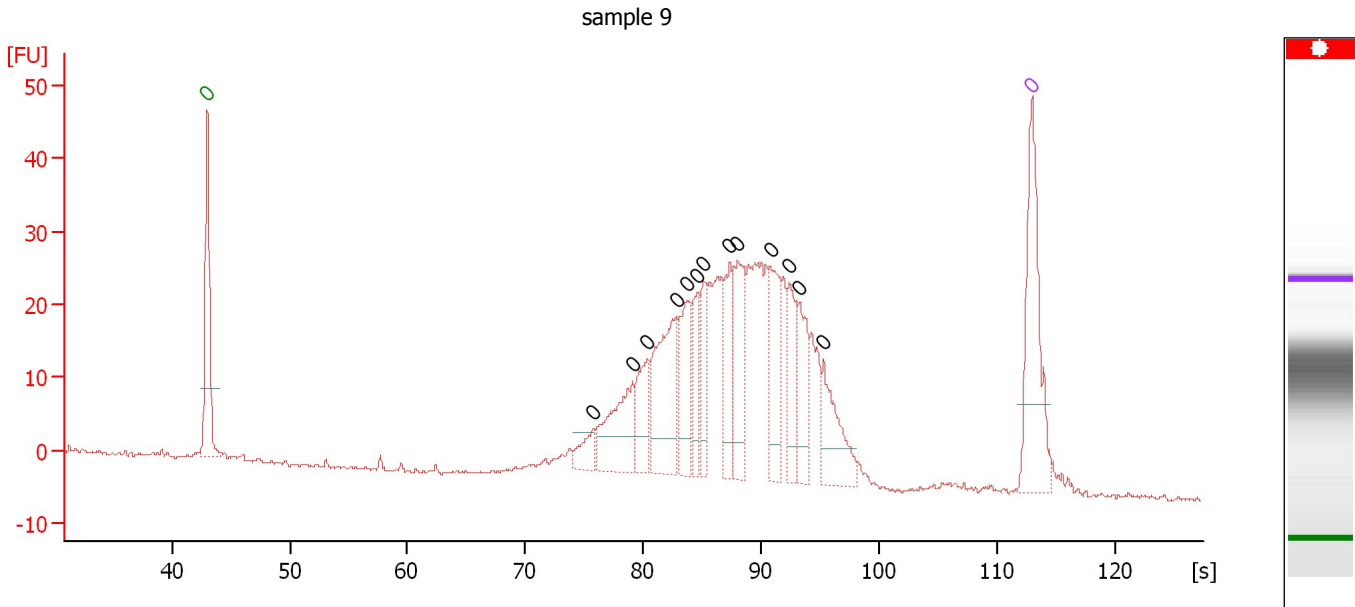
Peak table for sample 8 : sample 8

Peak	Aligned Migration Time [s]	Size [bp]	Conc. [pg/μl]	Molarity [pmol/l]	Observations
1	43.00	0	0.00	0.0	Lower Marker
2	79.66	0	0.00	0.0	
3	80.20	0	0.00	0.0	
4	81.11	0	0.00	0.0	
5	81.97	0	0.00	0.0	
6	84.28	0	0.00	0.0	
7	85.01	0	0.00	0.0	
8	90.00	0	0.00	0.0	
9	91.04	0	0.00	0.0	
10	95.53	0	0.00	0.0	
11	113.00	0	0.00	0.0	Upper Marker

Assay Class: High Sensitivity DNA Assay
 Data Path: C:\...ents and Settings\Bioanalyzer\2013-12-23\2013-12-23_001.xad

Created: 12/23/2013 10:55:59 AM
 Modified: 12/23/2013 11:37:23 AM

Electropherogram Summary Continued ...



Overall Results for sample 9 : sample 9

Number of peaks found: 13 Noise: 0.2

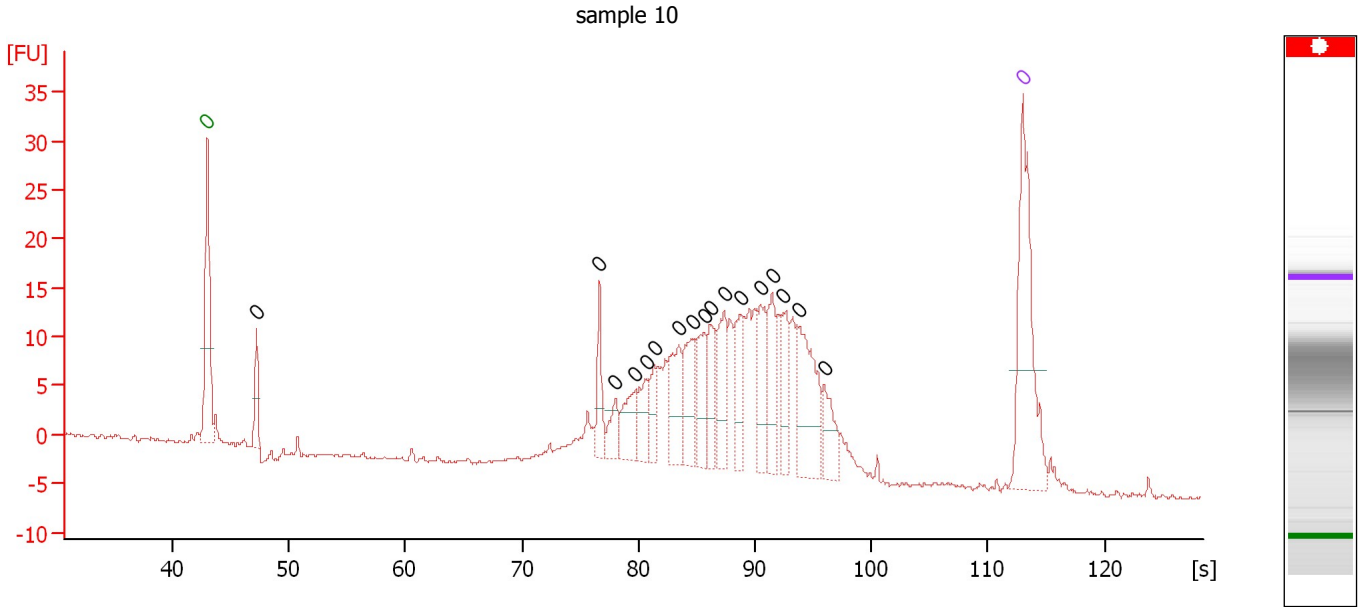
Peak table for sample 9 : sample 9

Peak	Aligned Migration Time [s]	Size [bp]	Conc. [pg/μl]	Molarity [pmol/l]	Observations
1	43.00	0	0.00	0.0	Lower Marker
2	75.72	0	0.00	0.0	
3	79.09	0	0.00	0.0	
4	80.37	0	0.00	0.0	
5	82.79	0	0.00	0.0	
6	83.79	0	0.00	0.0	
7	84.56	0	0.00	0.0	
8	85.11	0	0.00	0.0	
9	87.34	0	0.00	0.0	
10	88.03	0	0.00	0.0	
11	90.81	0	0.00	0.0	
12	92.40	0	0.00	0.0	
13	93.22	0	0.00	0.0	
14	95.27	0	0.00	0.0	
15	113.00	0	0.00	0.0	Upper Marker

Assay Class: High Sensitivity DNA Assay
 Data Path: C:\...ents and Settings\Bioanalyzer\2013-12-23\2013-12-23_001.xad

Created: 12/23/2013 10:55:59 AM
 Modified: 12/23/2013 11:37:23 AM

Electropherogram Summary Continued ...



Overall Results for sample 10 : sample 10

Number of peaks found: 17 Noise: 0.2

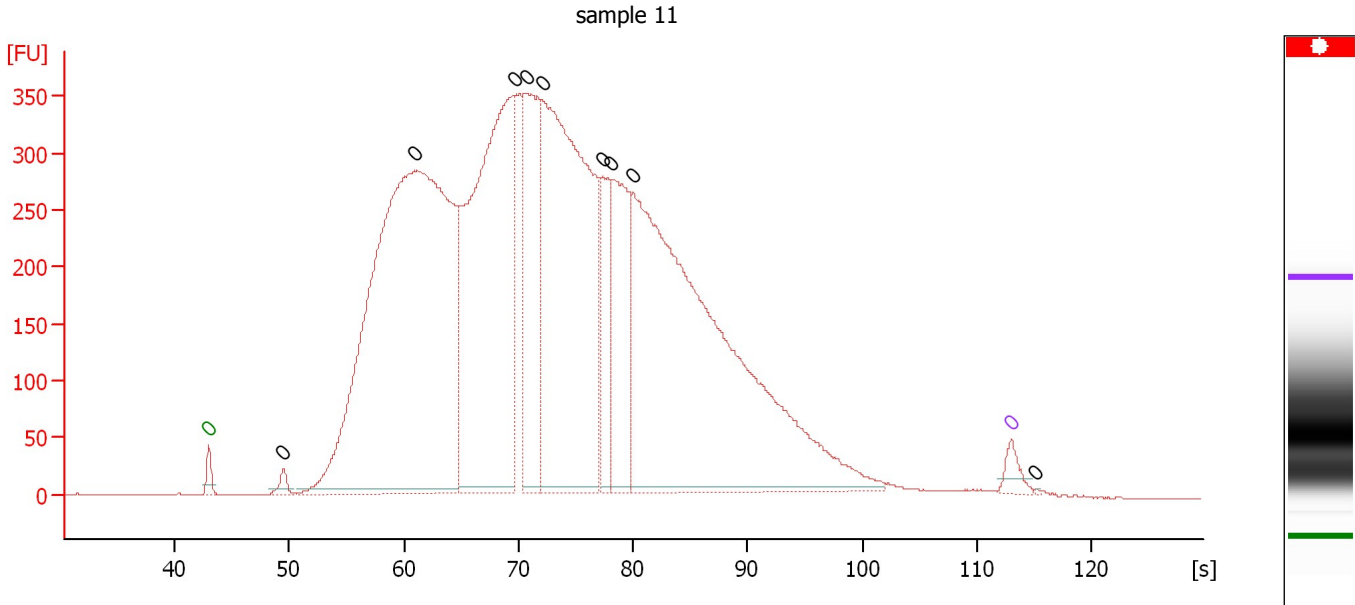
Peak table for sample 10 : sample 10

Peak	Aligned Migration Time [s]	Size [bp]	Conc. [pg/μl]	Molarity [pmol/l]	Observations
1	43.00	0	0.00	0.0	Lower Marker
2	47.24	0	0.00	0.0	
3	76.64	0	0.00	0.0	
4	78.02	0	0.00	0.0	
5	79.73	0	0.00	0.0	
6	80.74	0	0.00	0.0	
7	81.34	0	0.00	0.0	
8	83.46	0	0.00	0.0	
9	84.61	0	0.00	0.0	
10	85.63	0	0.00	0.0	
11	86.27	0	0.00	0.0	
12	87.38	0	0.00	0.0	
13	88.71	0	0.00	0.0	
14	90.51	0	0.00	0.0	
15	91.48	0	0.00	0.0	
16	92.45	0	0.00	0.0	
17	93.78	0	0.00	0.0	
18	95.95	0	0.00	0.0	
19	113.00	0	0.00	0.0	Upper Marker

Assay Class: High Sensitivity DNA Assay
 Data Path: C:\...ents and Settings\Bioanalyzer\2013-12-23\2013-12-23_001.xad

Created: 12/23/2013 10:55:59 AM
 Modified: 12/23/2013 11:37:23 AM

Electropherogram Summary Continued ...



Overall Results for sample 11 : sample 11

Number of peaks found: 9 Noise: 0.2

Peak table for sample 11 : sample 11

Peak	Aligned Migration Time [s]	Size [bp]	Conc. [pg/μl]	Molarity [pmol/l]	Observations
1	43.00	0	0.00	0.0	Lower Marker
2	49.51	0	0.00	0.0	
3	60.98	0	0.00	0.0	
4	69.60	0	0.00	0.0	
5	70.67	0	0.00	0.0	
6	72.03	0	0.00	0.0	
7	77.37	0	0.00	0.0	
8	78.12	0	0.00	0.0	
9	79.99	0	0.00	0.0	
10	113.00	0	0.00	0.0	Upper Marker
11	115.11	0	0.00	0.0	

Assay Class: High Sensitivity DNA Assay
Data Path: C:\...ents and Settings\Bioanalyzer\2013-12-23\2013-12-23_001.xad

Created: 12/23/2013 10:55:59 AM
Modified: 12/23/2013 11:37:23 AM

Gel Image

