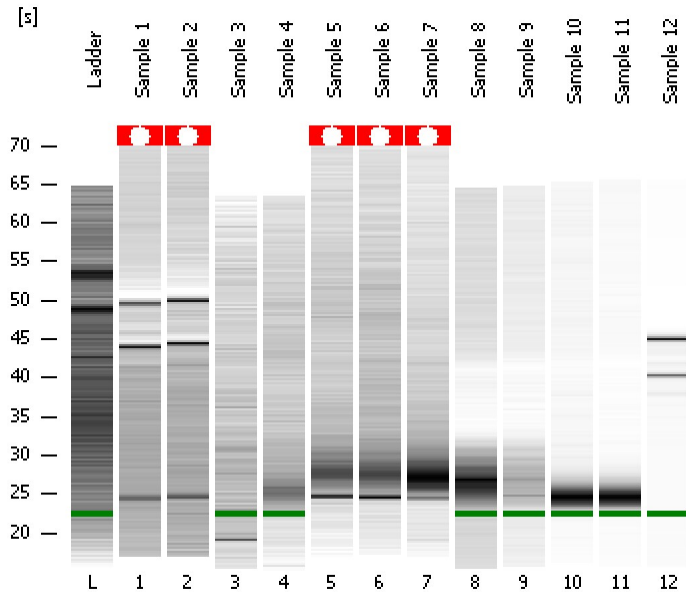


Assay Class: Prokaryote Total RNA Nano  
Data Path: C:\...ents and Settings\Bioanalyzer\2013-08-02\2013-08-02\_001.xad

Created: 8/2/2013 12:09:45 PM  
Modified: 8/2/2013 12:33:35 PM

### Electrophoresis File Run Summary



#### Instrument Information:

Instrument Name: DE13701086      Firmware: C.01.069  
Serial#: DE13701086      Type: G2938B

#### Assay Information:

Assay Origin Path: C:\Program Files\Agilent\2100 bioanalyzer\2100 expert\assays\RNA\Prokaryote Total RNA Nano Series II.xsy  
Assay Class: Prokaryote Total RNA Nano  
Version: 2.5  
Assay Comments: Total RNA Analysis ng sensitivity (Prokaryote)  
© Copyright 2003 - 2009 Agilent Technologies, Inc.

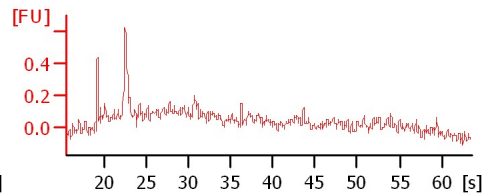
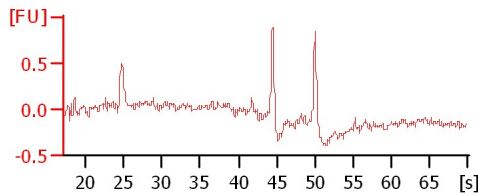
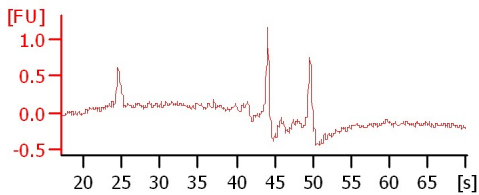
#### Chip Information:

Chip Lot #:   
Reagent Kit Lot #:   
Chip Comments:

Sample 1

Sample 2

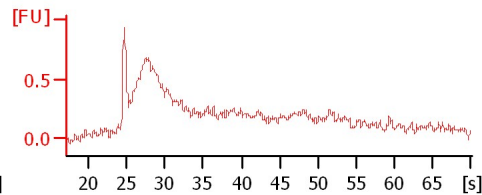
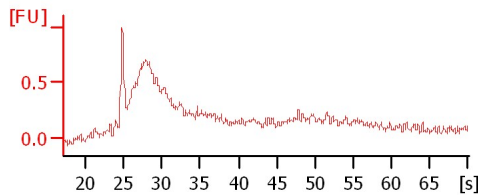
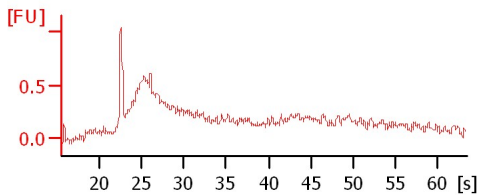
Sample 3



Sample 4

Sample 5

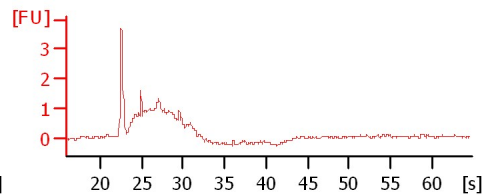
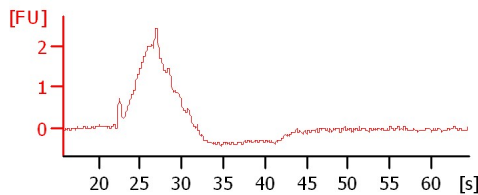
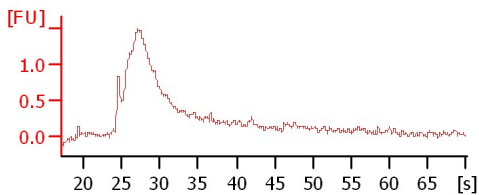
Sample 6



Sample 7

Sample 8

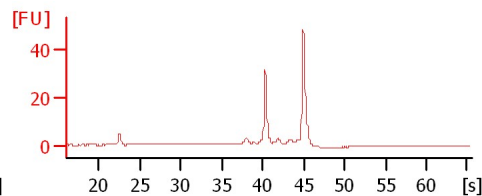
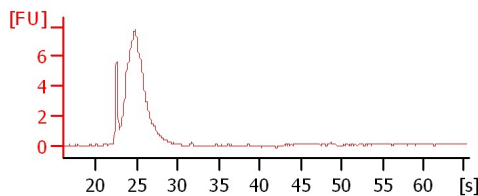
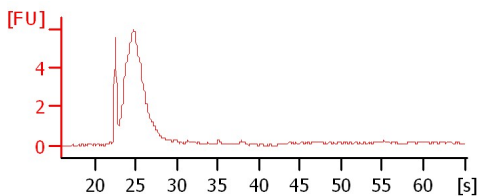
Sample 9



Sample 10

Sample 11

Sample 12



Assay Class: Prokaryote Total RNA Nano  
Data Path: C:\...ents and Settings\Bioanalyzer\2013-08-02\2013-08-02\_001.xad

Created: 8/2/2013 12:09:45 PM  
Modified: 8/2/2013 12:33:35 PM

**Electrophoresis File Run Summary (Chip Summary)**

Sample Name	Sample Comment	Status	Result Label	Result Color
Sample 1		✓		
Sample 2		✓		
Sample 3		✓		
Sample 4		✓		
Sample 5		✓		
Sample 6		✓		
Sample 7		✓		
Sample 8		✓		
Sample 9		✓		
Sample 10		✓		
Sample 11		✓		
Sample 12		✓		
Ladder		✓		

**Chip Lot #****Reagent Kit Lot #****Chip Comments :**

Assay Class: Prokaryote Total RNA Nano  
Data Path: C:\...ents and Settings\Bioanalyzer\2013-08-02\2013-08-02\_001.xad

Created: 8/2/2013 12:09:45 PM  
Modified: 8/2/2013 12:33:35 PM

## Electrophoresis Assay Details

### General Analysis Settings

Number of Available Sample and Ladder Wells (Max.) : 13  
Minimum Visible Range [s] : 17  
Maximum Visible Range [s] : 70  
Start Analysis Time Range [s] : 19  
End Analysis Time Range [s] : 69  
Ladder Concentration [ng/μl] : 150  
Lower Marker Concentration [ng/μl] : 0  
Upper Marker Concentration [ng/μl] : 0  
Used Lower Marker for Quantitation  
Standard Curve Fit is Logarithmic  
Show Data Aligned to Lower Marker

### Integrator Settings

Integration Start Time [s] : 19  
Integration End Time [s] : 69  
Slope Threshold : 0.6  
Height Threshold [FU] : 0.5  
Area Threshold : 0.2  
Width Threshold [s] : 0.5  
Baseline Plateau [s] : 6

### Filter Settings

Filter Width [s] : 0.5  
Polynomial Order : 4

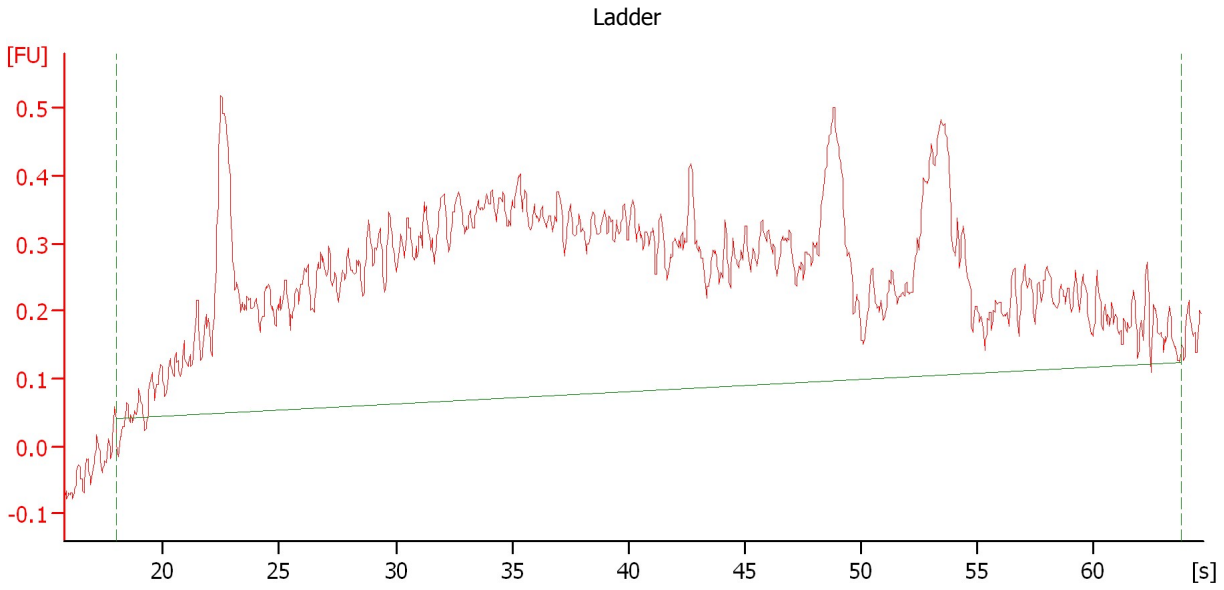
### Ladder

Ladder Peak	Size
1	25
2	200
3	500
4	1000
5	2000
6	4000

Assay Class: Prokaryote Total RNA Nano  
Data Path: C:\...ents and Settings\Bioanalyzer\2013-08-02\2013-08-02\_001.xad

Created: 8/2/2013 12:09:45 PM  
Modified: 8/2/2013 12:33:35 PM

**Electropherogram Summary**



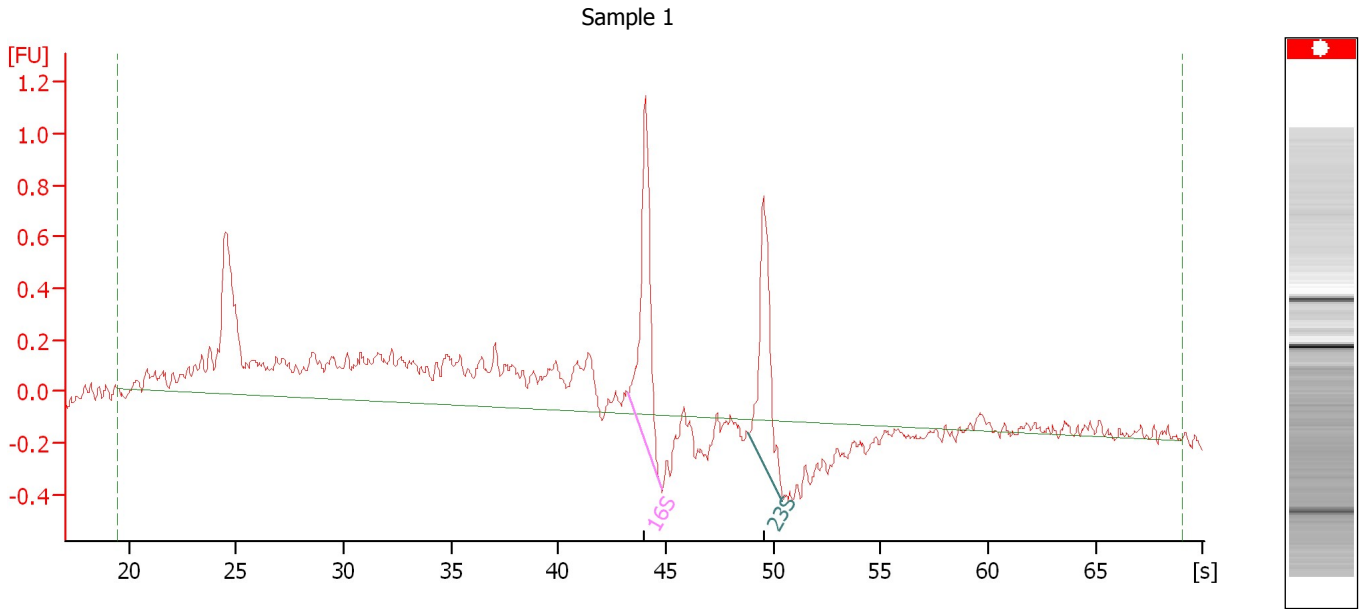
**Overall Results for Ladder**

RNA Area: 21.3                      RNA Concentration: 150 ng/μl

Assay Class: Prokaryote Total RNA Nano  
Data Path: C:\...ents and Settings\Bioanalyzer\2013-08-02\2013-08-02\_001.xad

Created: 8/2/2013 12:09:45 PM  
Modified: 8/2/2013 12:33:35 PM

**Electropherogram Summary Continued ...**



**Overall Results for sample 1 : Sample 1**

RNA Area: 12.4                      rRNA Ratio [23s / 16s]: 0.8  
RNA Concentration: 87 ng/μl              RNA Integrity Number (RIN): N/A (B.02.08)

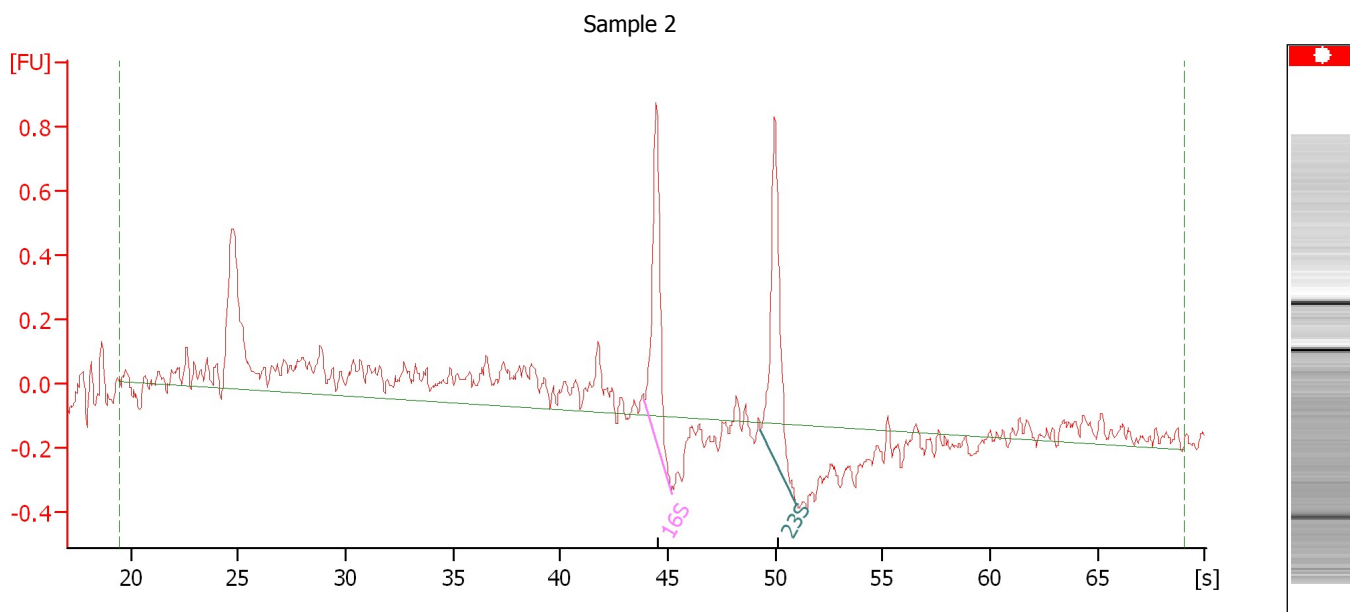
**Fragment table for sample 1 : Sample 1**

Name	Start Size [nt]	End Size [nt]	Area	% of total Area
16S	1,083	1,343	1.5	11.8
23S	1,994	2,684	1.2	9.5

Assay Class: Prokaryote Total RNA Nano  
 Data Path: C:\...ents and Settings\Bioanalyzer\2013-08-02\2013-08-02\_001.xad

Created: 8/2/2013 12:09:45 PM  
 Modified: 8/2/2013 12:33:35 PM

**Electropherogram Summary Continued ...**



**Overall Results for sample 2 : Sample 2**

RNA Area:	7.9	rRNA Ratio [23s / 16s]:	1.0
RNA Concentration:	56 ng/μl	RNA Integrity Number (RIN):	N/A (B.02.08)

**Fragment table for sample 2 : Sample 2**

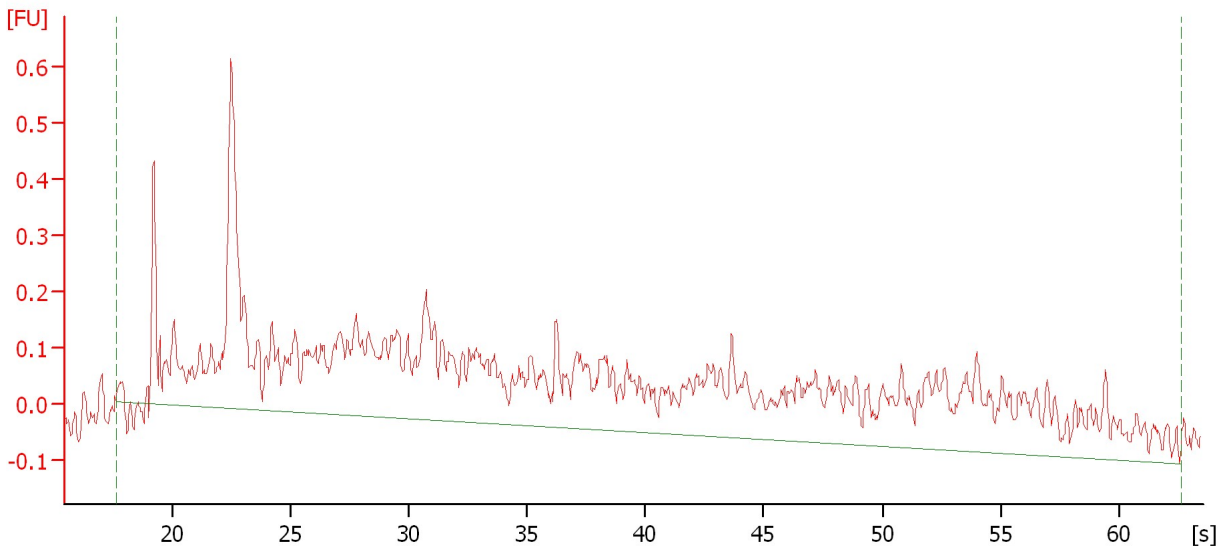
Name	Start Size [nt]	End Size [nt]	Area	% of total Area
16S	1,196	1,400	1.0	12.9
23S	2,203	2,924	1.1	13.3

Assay Class: Prokaryote Total RNA Nano  
Data Path: C:\...ents and Settings\Bioanalyzer\2013-08-02\2013-08-02\_001.xad

Created: 8/2/2013 12:09:45 PM  
Modified: 8/2/2013 12:33:35 PM

**Electropherogram Summary Continued ...**

Sample 3



**Overall Results for sample 3 : Sample 3**

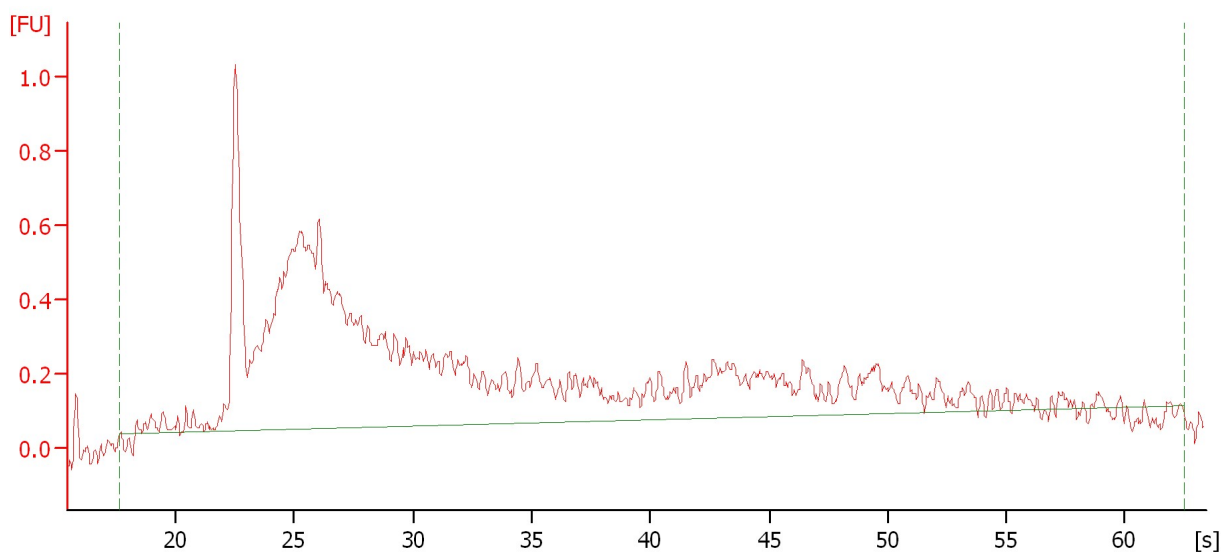
RNA Area:	11.3	rRNA Ratio [23s / 16s]:	0.0
RNA Concentration:	80 ng/μl	RNA Integrity Number (RIN):	2.4 (B.02.08)

Assay Class: Prokaryote Total RNA Nano  
Data Path: C:\...ents and Settings\Bioanalyzer\2013-08-02\2013-08-02\_001.xad

Created: 8/2/2013 12:09:45 PM  
Modified: 8/2/2013 12:33:35 PM

**Electropherogram Summary Continued ...**

Sample 4



**Overall Results for sample 4 : Sample 4**

RNA Area:	15.4	rRNA Ratio [23s / 16s]:	0.0
RNA Concentration:	108 ng/ $\mu$ l	RNA Integrity Number (RIN):	2.5 (B.02.08)

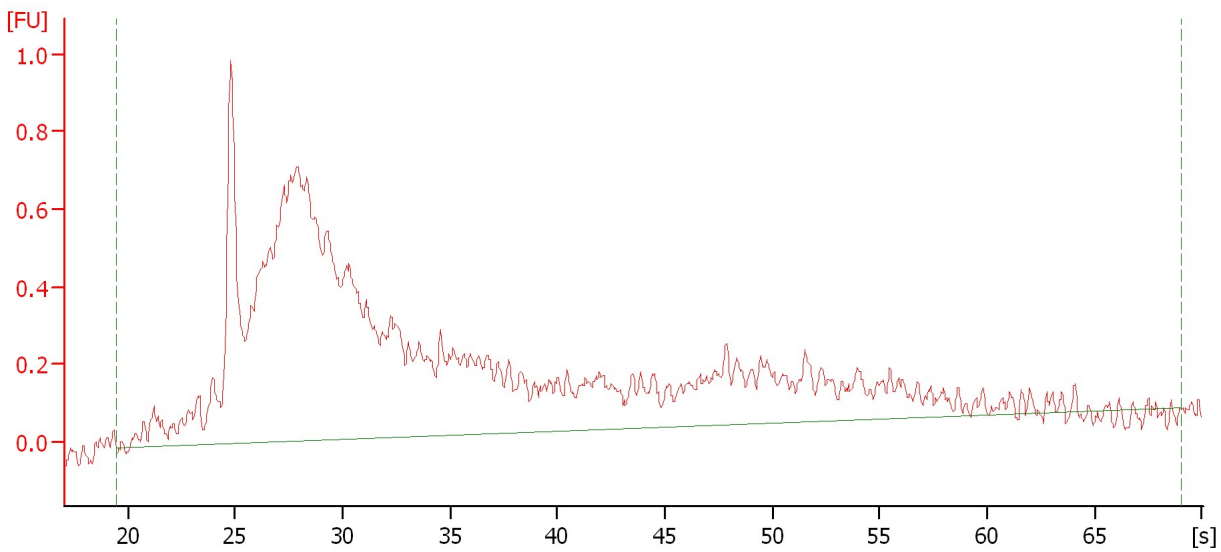


Assay Class: Prokaryote Total RNA Nano  
Data Path: C:\...ents and Settings\Bioanalyzer\2013-08-02\2013-08-02\_001.xad

Created: 8/2/2013 12:09:45 PM  
Modified: 8/2/2013 12:33:35 PM

**Electropherogram Summary Continued ...**

Sample 5



**Overall Results for sample 5 : Sample 5**

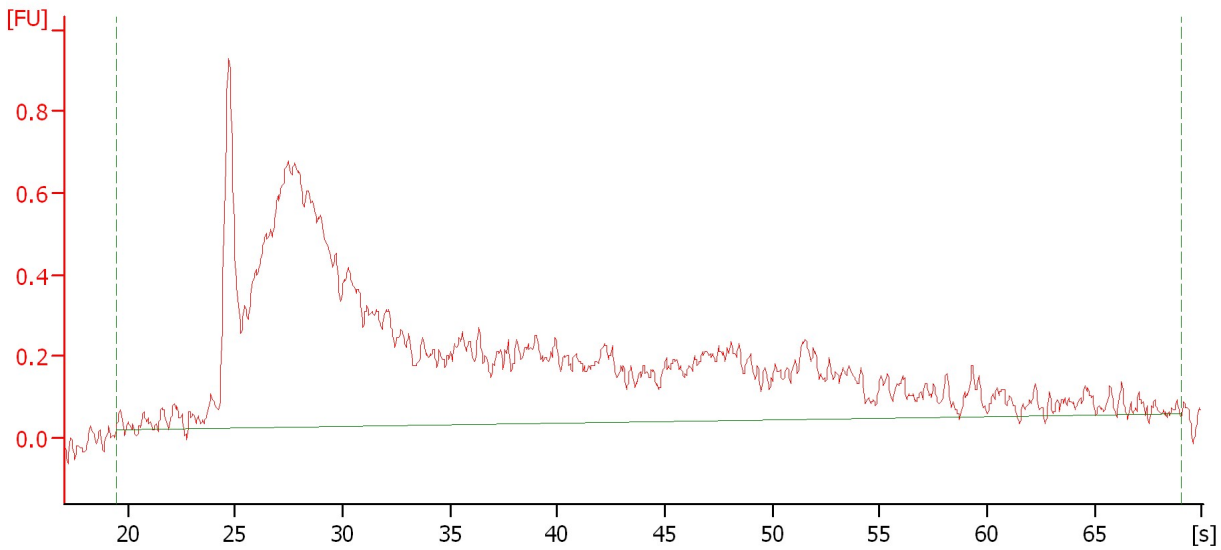
RNA Concentration: 158 ng/μl      rRNA Ratio [23s / 16s]: 0.0

Assay Class: Prokaryote Total RNA Nano  
Data Path: C:\...ents and Settings\Bioanalyzer\2013-08-02\2013-08-02\_001.xad

Created: 8/2/2013 12:09:45 PM  
Modified: 8/2/2013 12:33:35 PM

**Electropherogram Summary Continued ...**

Sample 6



**Overall Results for sample 6 : Sample 6**

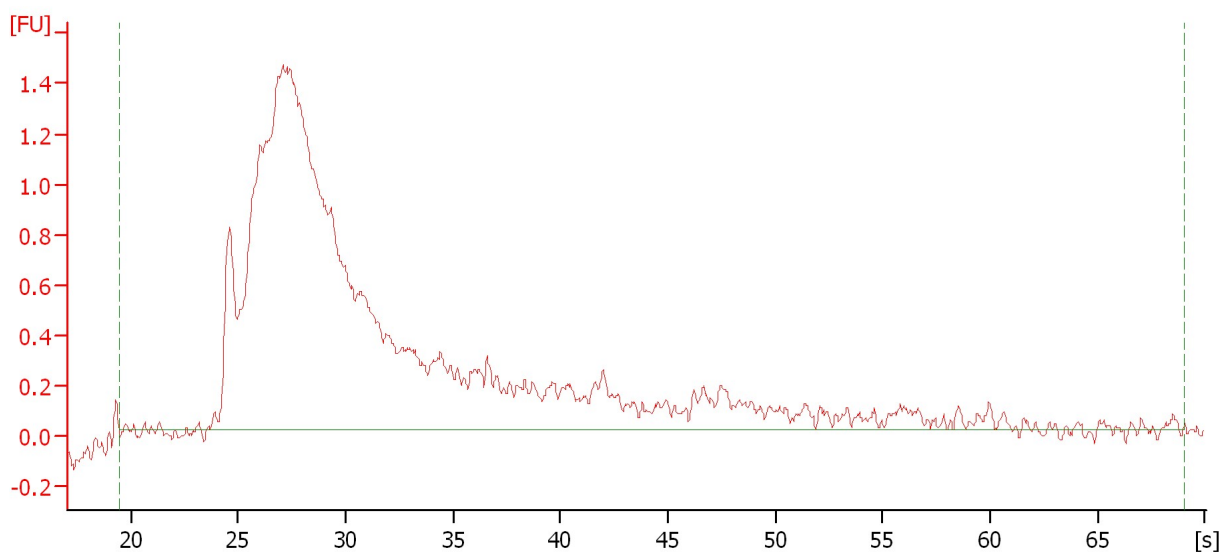
RNA Concentration: 155 ng/μl rRNA Ratio [23s / 16s]: 0.0

Assay Class: Prokaryote Total RNA Nano  
Data Path: C:\...ents and Settings\Bioanalyzer\2013-08-02\2013-08-02\_001.xad

Created: 8/2/2013 12:09:45 PM  
Modified: 8/2/2013 12:33:35 PM

**Electropherogram Summary Continued ...**

Sample 7



**Overall Results for sample 7 : Sample 7**

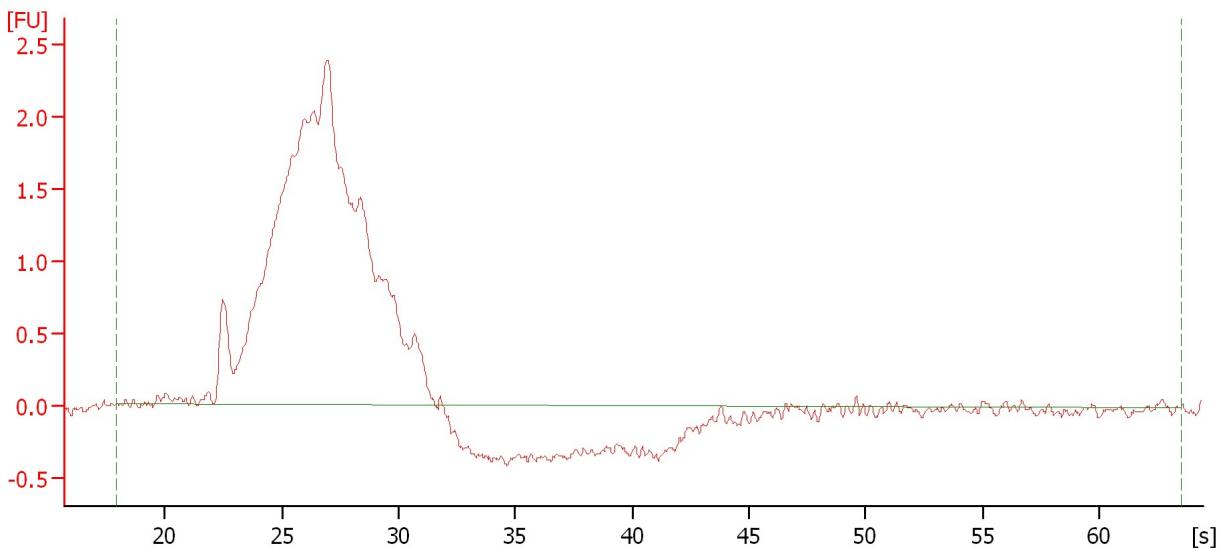
RNA Concentration: 229 ng/μl      rRNA Ratio [23s / 16s]: 0.0

Assay Class: Prokaryote Total RNA Nano  
Data Path: C:\...ents and Settings\Bioanalyzer\2013-08-02\2013-08-02\_001.xad

Created: 8/2/2013 12:09:45 PM  
Modified: 8/2/2013 12:33:35 PM

**Electropherogram Summary Continued ...**

Sample 8



**Overall Results for sample 8 : Sample 8**

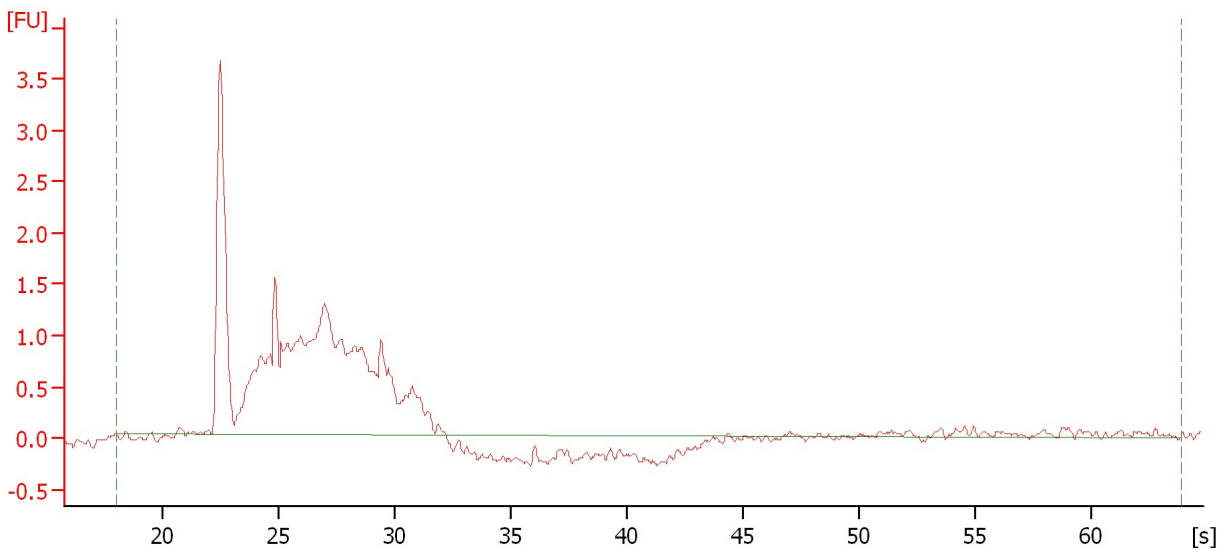
RNA Area:	37.3	rRNA Ratio [23s / 16s]:	0.0
RNA Concentration:	263 ng/μl	RNA Integrity Number (RIN):	2.5 (B.02.08)

Assay Class: Prokaryote Total RNA Nano  
Data Path: C:\...ents and Settings\Bioanalyzer\2013-08-02\2013-08-02\_001.xad

Created: 8/2/2013 12:09:45 PM  
Modified: 8/2/2013 12:33:35 PM

**Electropherogram Summary Continued ...**

Sample 9



**Overall Results for sample 9 : Sample 9**

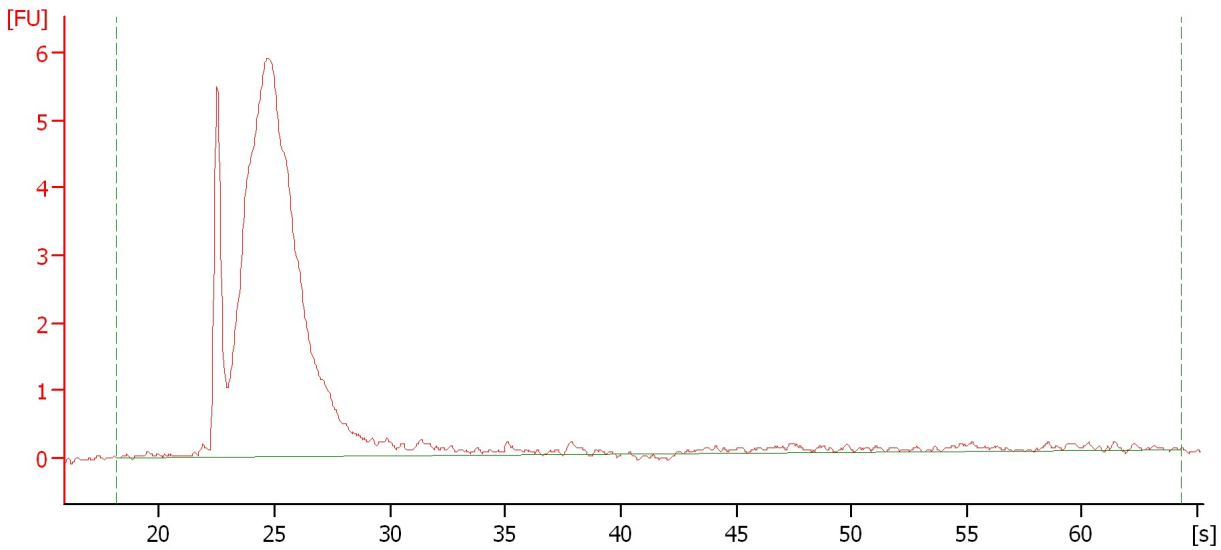
RNA Area:	23.0	rRNA Ratio [23s / 16s]:	0.0
RNA Concentration:	162 ng/μl	RNA Integrity Number (RIN):	2.5 (B.02.08)

Assay Class: Prokaryote Total RNA Nano  
Data Path: C:\...ents and Settings\Bioanalyzer\2013-08-02\2013-08-02\_001.xad

Created: 8/2/2013 12:09:45 PM  
Modified: 8/2/2013 12:33:35 PM

**Electropherogram Summary Continued ...**

Sample 10



**Overall Results for sample 10 : Sample 10**

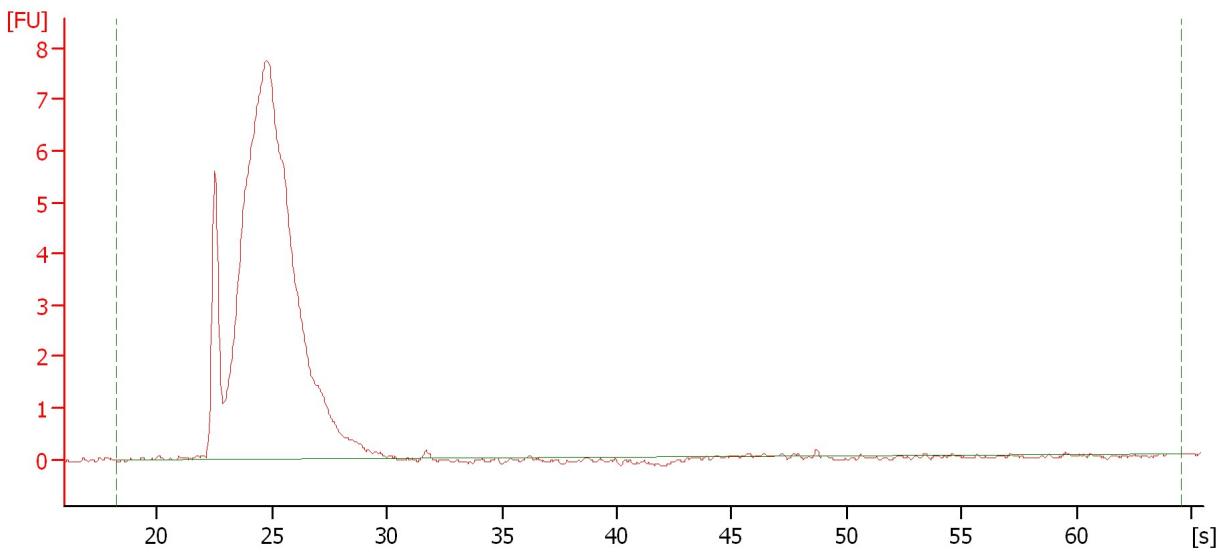
RNA Area:	66.3	rRNA Ratio [23s / 16s]:	0.0
RNA Concentration:	467 ng/μl	RNA Integrity Number (RIN):	2.6 (B.02.08)

Assay Class: Prokaryote Total RNA Nano  
Data Path: C:\...ents and Settings\Bioanalyzer\2013-08-02\2013-08-02\_001.xad

Created: 8/2/2013 12:09:45 PM  
Modified: 8/2/2013 12:33:35 PM

**Electropherogram Summary Continued ...**

Sample 11



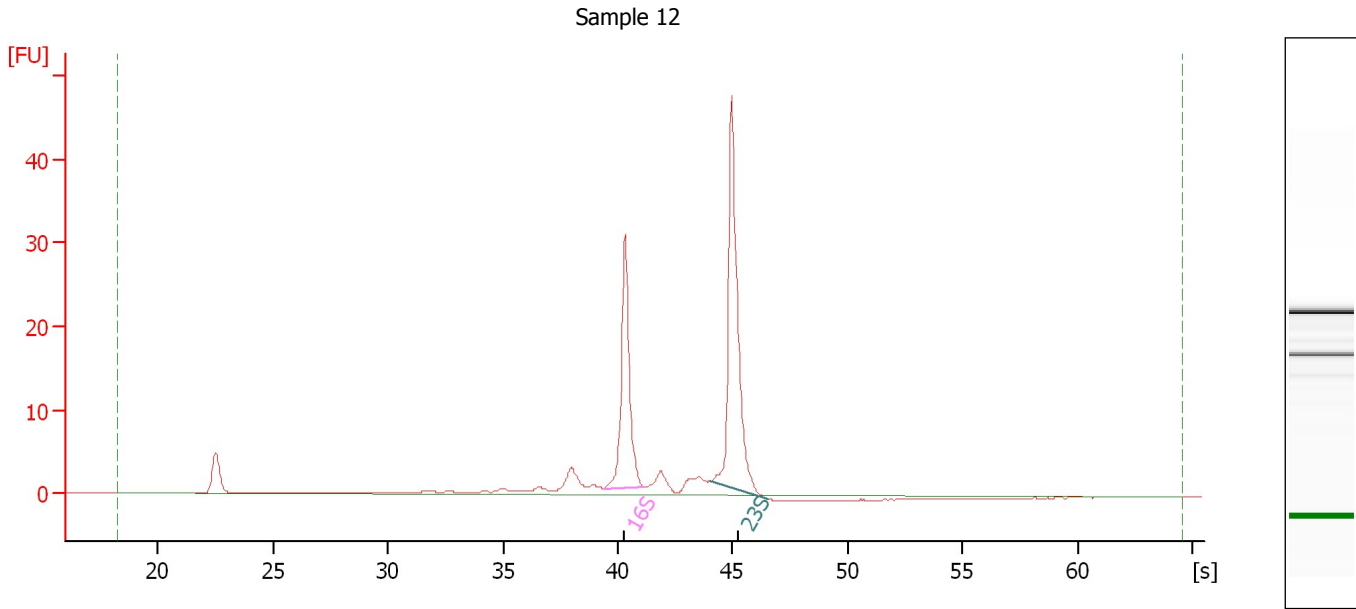
**Overall Results for sample 11 : Sample 11**

RNA Area:	79.2	rRNA Ratio [23s / 16s]:	0.0
RNA Concentration:	557 ng/μl	RNA Integrity Number (RIN):	2.6 (B.02.08)

Assay Class: Prokaryote Total RNA Nano  
Data Path: C:\...ents and Settings\Bioanalyzer\2013-08-02\2013-08-02\_001.xad

Created: 8/2/2013 12:09:45 PM  
Modified: 8/2/2013 12:33:35 PM

**Electropherogram Summary Continued ...**



**Overall Results for sample 12 : Sample 12**

RNA Area: 117.6 rRNA Ratio [23s / 16s]: 1.6  
RNA Concentration: 828 ng/μl RNA Integrity Number (RIN): 9 (B.02.08)

**Fragment table for sample 12 : Sample 12**

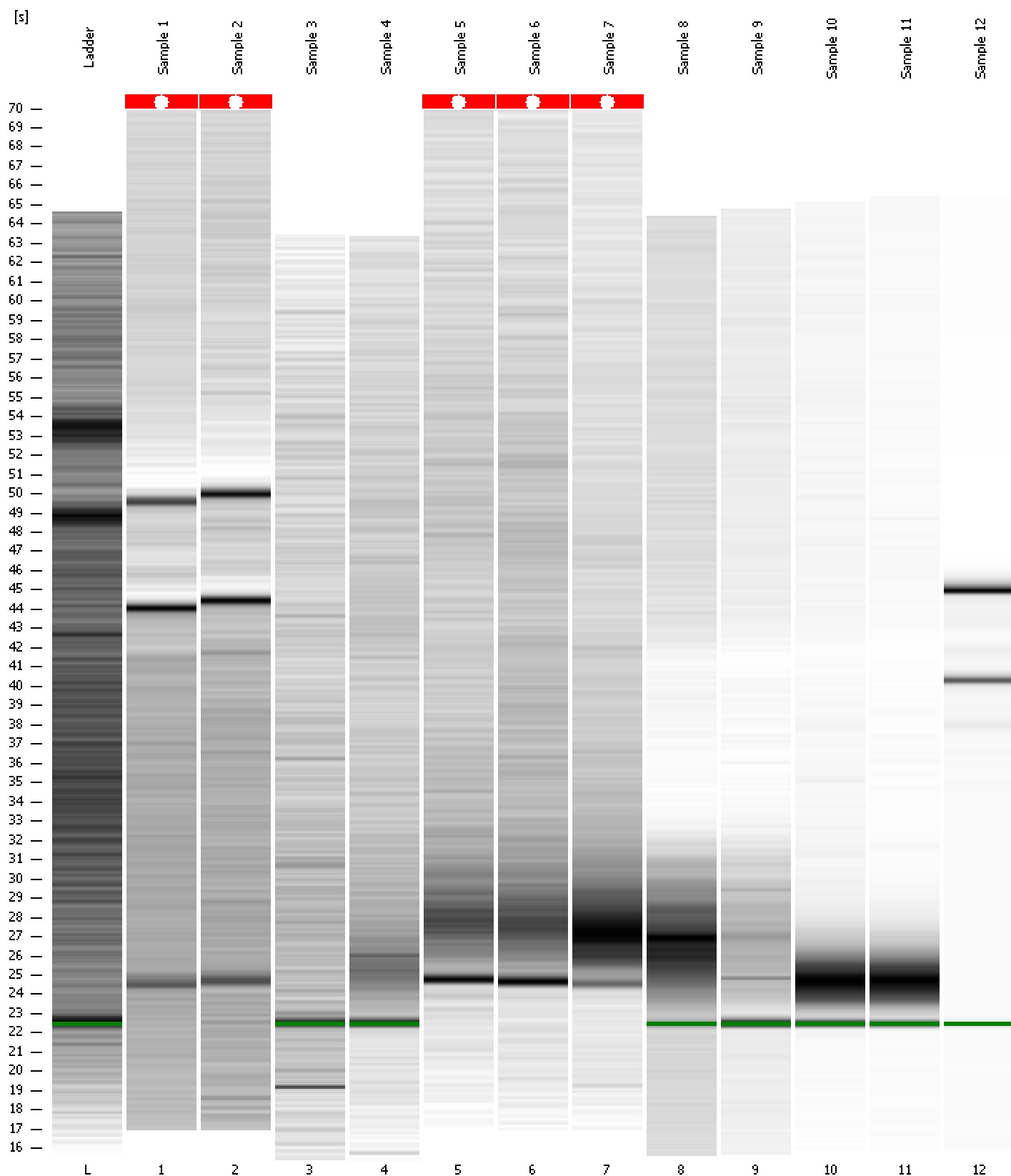
Name	Start Size [nt]	End Size [nt]	Area	% of total Area
16S	777	894	30.7	26.1
23S	1,208	1,627	48.3	41.1



Assay Class: Prokaryote Total RNA Nano  
Data Path: C:\...ents and Settings\Bioanalyzer\2013-08-02\2013-08-02\_001.xad

Created: 8/2/2013 12:09:45 PM  
Modified: 8/2/2013 12:33:35 PM

**Gel Image**



Assay Class: Prokaryote Total RNA Nano  
 Data Path: C:\...ents and Settings\Bioanalyzer\2013-08-02\2013-08-02\_001.xad

Created: 8/2/2013 12:09:45 PM  
 Modified: 8/2/2013 12:33:35 PM

**Run Logbook**

Description	Number	Source	Category	Sub Category	Time	Time Zone	User	Host
Run ended on port 1 (Number of wells acquired: 13)		Instrument	Run		8/2/2013 12:33:33 PM	(GMT --07:00) Pacific Standard Time	UC Davis	D8XSMGH1
Run started on port 1 (File: C:\Documents and Settings\Bioanalyzer\2013-08-02\2013-08-02_001.xad)		Instrument	Run		8/2/2013 12:09:51 PM	(GMT --07:00) Pacific Standard Time	UC Davis	D8XSMGH1
Product Number : G2938B		Instrument	Run		8/2/2013 12:09:51 PM	(GMT --07:00) Pacific Standard Time	UC Davis	D8XSMGH1
Name :		Instrument	Run		8/2/2013 12:09:51 PM	(GMT --07:00) Pacific Standard Time	UC Davis	D8XSMGH1
Vendor : Agilent Technologies		Instrument	Run		8/2/2013 12:09:51 PM	(GMT --07:00) Pacific Standard Time	UC Davis	D8XSMGH1
Serial# : DE13701086		Instrument	Run		8/2/2013 12:09:51 PM	(GMT --07:00) Pacific Standard Time	UC Davis	D8XSMGH1
Firmware : C.01.069		Instrument	Run		8/2/2013 12:09:51 PM	(GMT --07:00) Pacific Standard Time	UC Davis	D8XSMGH1
Cartridge : Electrode		Instrument	Run		8/2/2013 12:09:51 PM	(GMT --07:00) Pacific Standard Time	UC Davis	D8XSMGH1