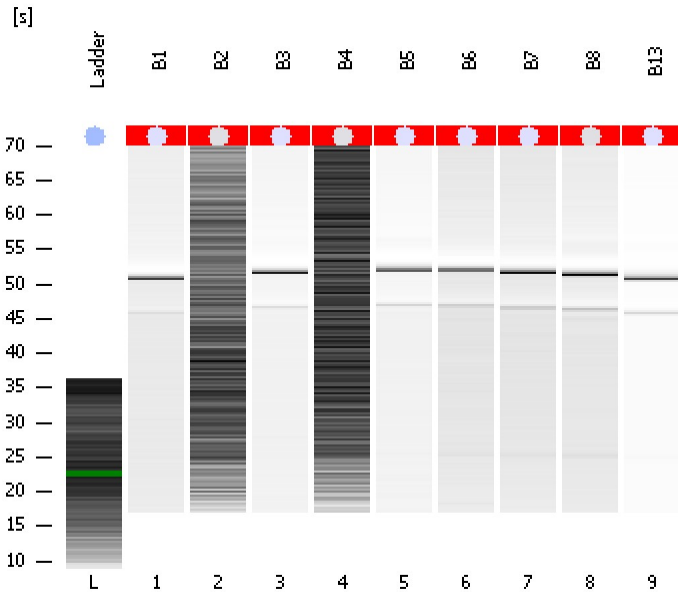


Assay Class: Plant RNA Nano
Data Path: C:\Documents and Settings\Bioanalyzer\2013-06-24\alan_bad.xad

Created: 6/24/2013 9:46:28 AM
Modified: 6/24/2013 10:14:41 AM

Electrophoresis File Run Summary



Instrument Information:

Instrument Name: DE13701086 Firmware: C.01.069
Serial#: DE13701086 Type: G2938B

Assay Information:

Assay Origin Path: C:\Program Files\Agilent\2100 bioanalyzer\2100 expert\assays\RNA\Plant RNA Nano.xsy

Assay Class: Plant RNA Nano

Version: 1.3

Assay Comments: Total RNA Analysis ng sensitivity (Plant)

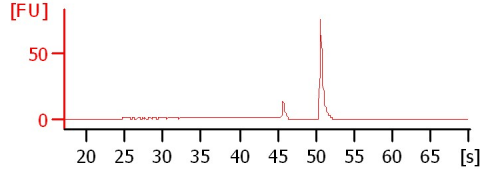
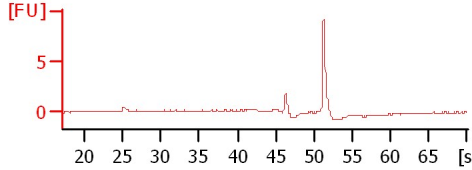
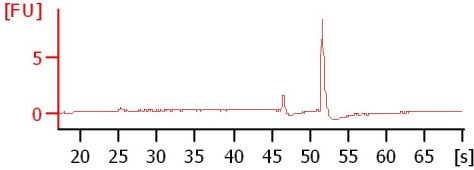
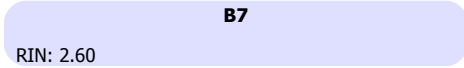
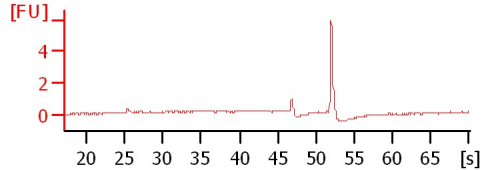
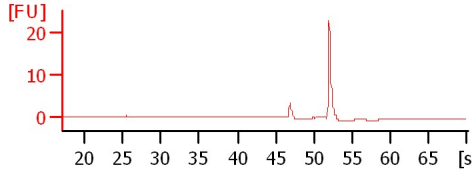
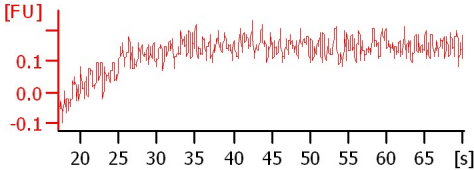
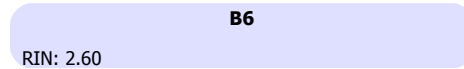
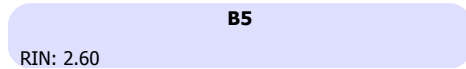
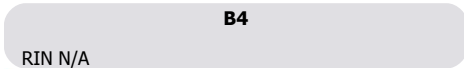
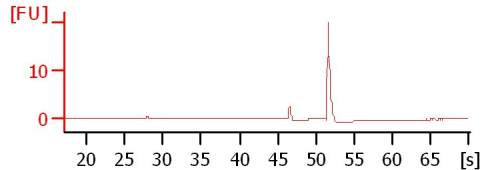
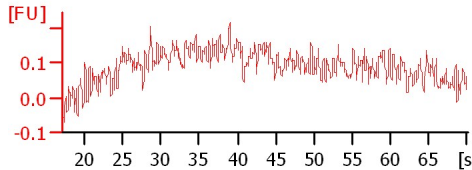
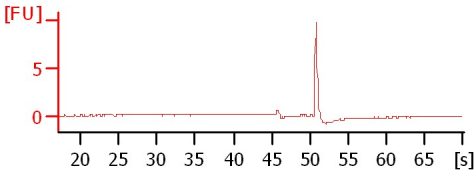
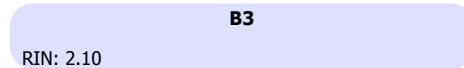
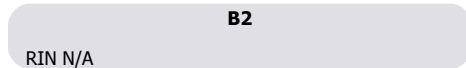
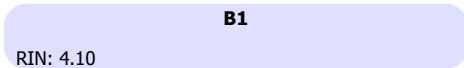
© Copyright 2003 - 2009 Agilent Technologies, Inc.

Chip Information:

Chip Lot #:

Reagent Kit Lot #:

Chip Comments:



Assay Class: Plant RNA Nano
Data Path: C:\Documents and Settings\Bioanalyzer\2013-06-24\alan_bad.xad

Created: 6/24/2013 9:46:28 AM
Modified: 6/24/2013 10:14:41 AM

Electrophoresis File Run Summary (Chip Summary)

Sample Name	Sample Comment	Status	Result Label	Result Color
B1		✓	RIN: 4.10	
B2		✓	RIN N/A	
B3		✓	RIN: 2.10	
B4		✓	RIN N/A	
B5		✓	RIN: 2.60	
B6		✓	RIN: 2.60	
B7		✓	RIN: 2.60	
B8		✓	RIN N/A	
B13		✓	RIN: 7.10	
Ladder		✓	All Other Samples	

Chip Lot #**Reagent Kit Lot #****Chip Comments :**

Assay Class: Plant RNA Nano
Data Path: C:\Documents and Settings\Bioanalyzer\2013-06-24\alan_bad.xad

Created: 6/24/2013 9:46:28 AM
Modified: 6/24/2013 10:14:41 AM

Electrophoresis Assay Details

General Analysis Settings

Number of Available Sample and Ladder Wells (Max.) : 13
Minimum Visible Range [s] : 17
Maximum Visible Range [s] : 70
Start Analysis Time Range [s] : 19
End Analysis Time Range [s] : 69
Ladder Concentration [ng/μl] : 150
Lower Marker Concentration [ng/μl] : 0
Upper Marker Concentration [ng/μl] : 0
Used Lower Marker for Quantitation
Standard Curve Fit is Logarithmic
Show Data Aligned to Lower Marker

Integrator Settings

Integration Start Time [s] : 19
Integration End Time [s] : 69
Slope Threshold : 0.6
Height Threshold [FU] : 0.2
Area Threshold : 0.1
Width Threshold [s] : 0.2
Baseline Plateau [s] : 6

Filter Settings

Filter Width [s] : 0.5
Polynomial Order : 4

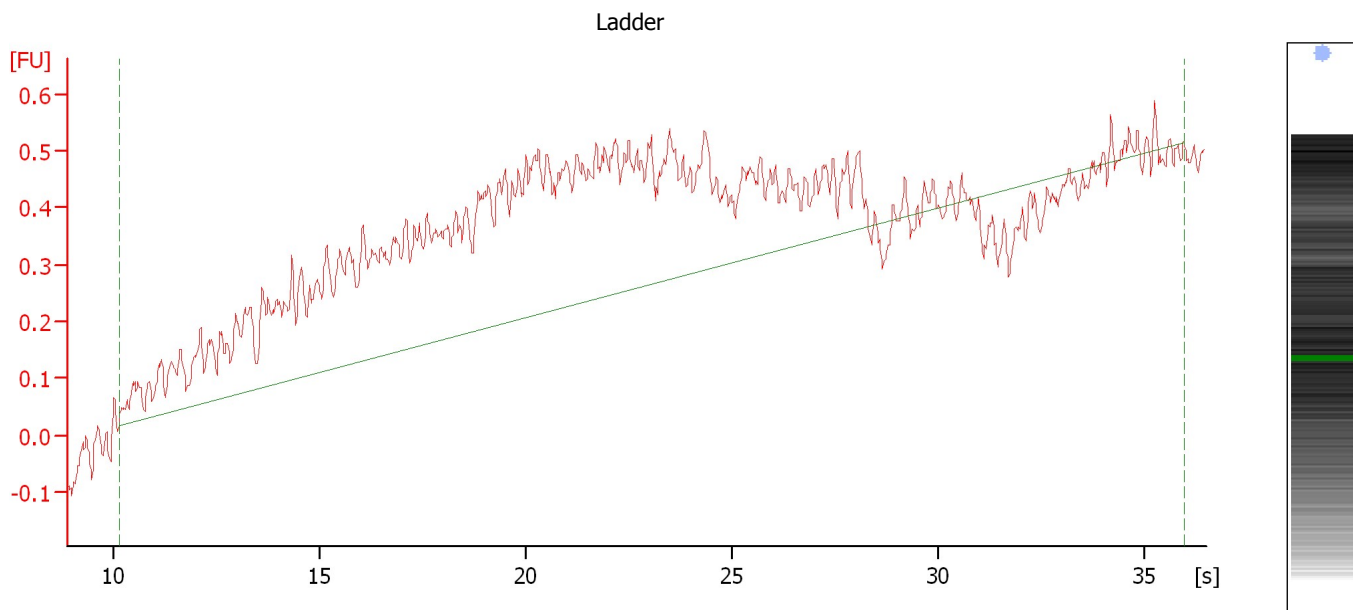
Ladder

Ladder Peak	Size
1	25
2	200
3	500
4	1000
5	2000
6	4000

Assay Class: Plant RNA Nano
Data Path: C:\Documents and Settings\Bioanalyzer\2013-06-24\alan_bad.xad

Created: 6/24/2013 9:46:28 AM
Modified: 6/24/2013 10:14:41 AM

Electropherogram Summary



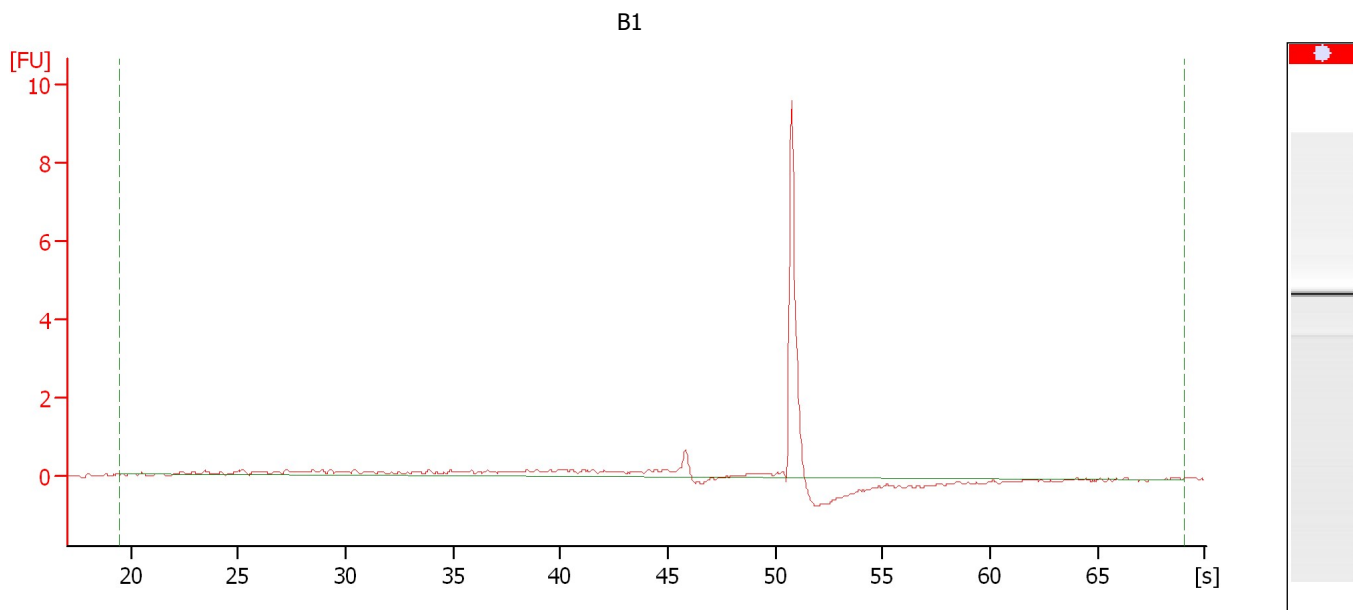
Overall Results for Ladder

RNA Area:	15.0	Result Flagging Color:	
RNA Concentration:	150 ng/ μ l	Result Flagging Label:	All Other Samples

Assay Class: Plant RNA Nano
Data Path: C:\Documents and Settings\Bioanalyzer\2013-06-24\alan_bad.xad

Created: 6/24/2013 9:46:28 AM
Modified: 6/24/2013 10:14:41 AM

Electropherogram Summary Continued ...



Setpoint Deviations for sample 1 : B1

Height Threshold [FU] : 0.1

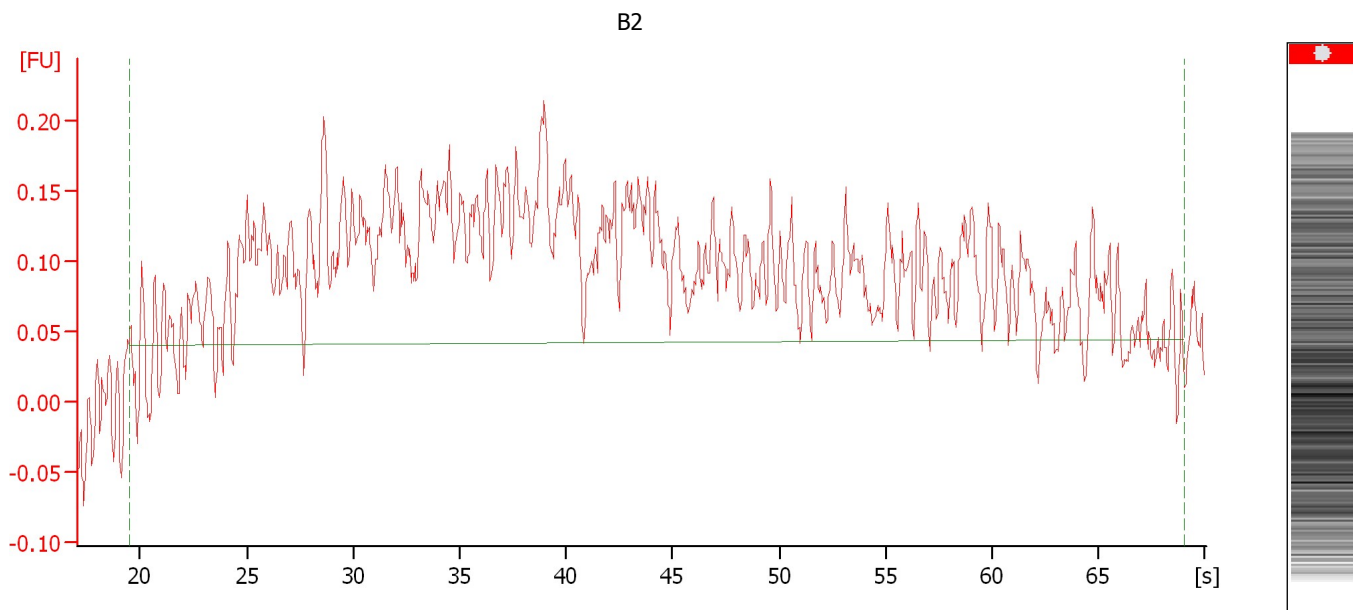
Overall Results for sample 1 : B1

RNA Area:	14.5	RNA Integrity Number (RIN):	4.1 (B.02.08)
RNA Concentration:	144 ng/μl	Result Flagging Color:	
rRNA Ratio [25s / 18s]:	0.0	Result Flagging Label:	RIN: 4.10

Assay Class: Plant RNA Nano
Data Path: C:\Documents and Settings\Bioanalyzer\2013-06-24\alan_bad.xad

Created: 6/24/2013 9:46:28 AM
Modified: 6/24/2013 10:14:41 AM

Electropherogram Summary Continued ...



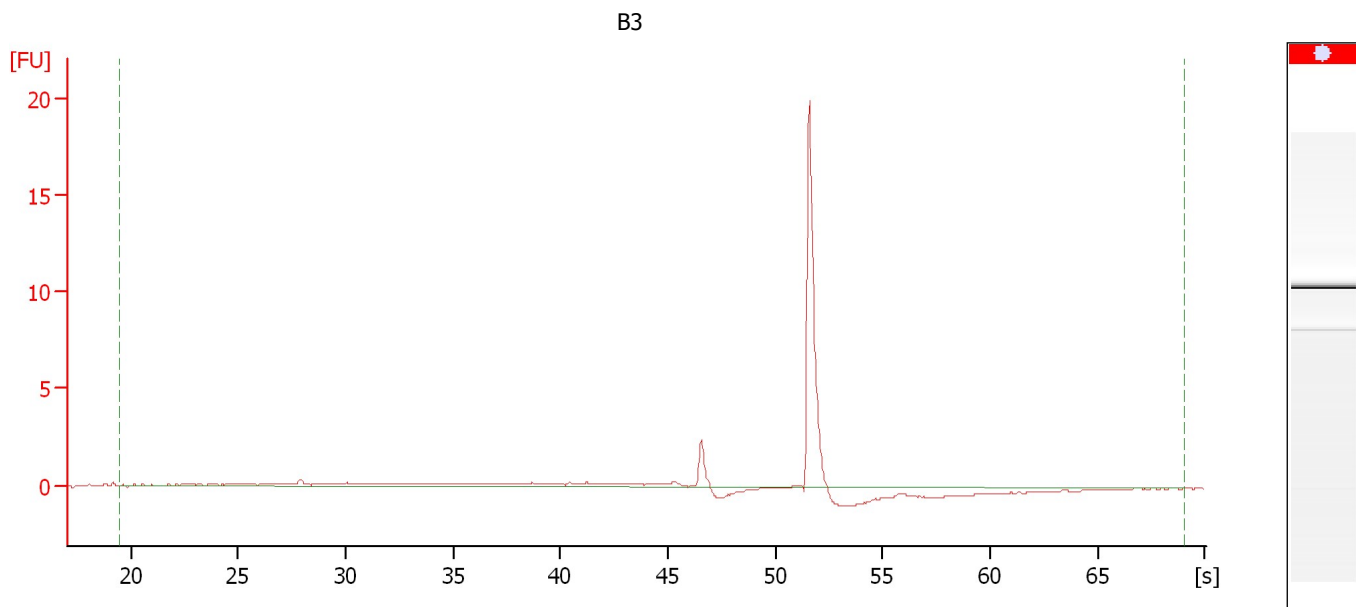
Overall Results for sample 2 : B2

RNA Concentration: 71 ng/ μ l
rRNA Ratio [25s / 18s]: 0.0

Result Flagging Color:
Result Flagging Label: RIN N/A

Assay Class: Plant RNA Nano
Data Path: C:\Documents and Settings\Bioanalyzer\2013-06-24\alan_bad.xad

Created: 6/24/2013 9:46:28 AM
Modified: 6/24/2013 10:14:41 AM

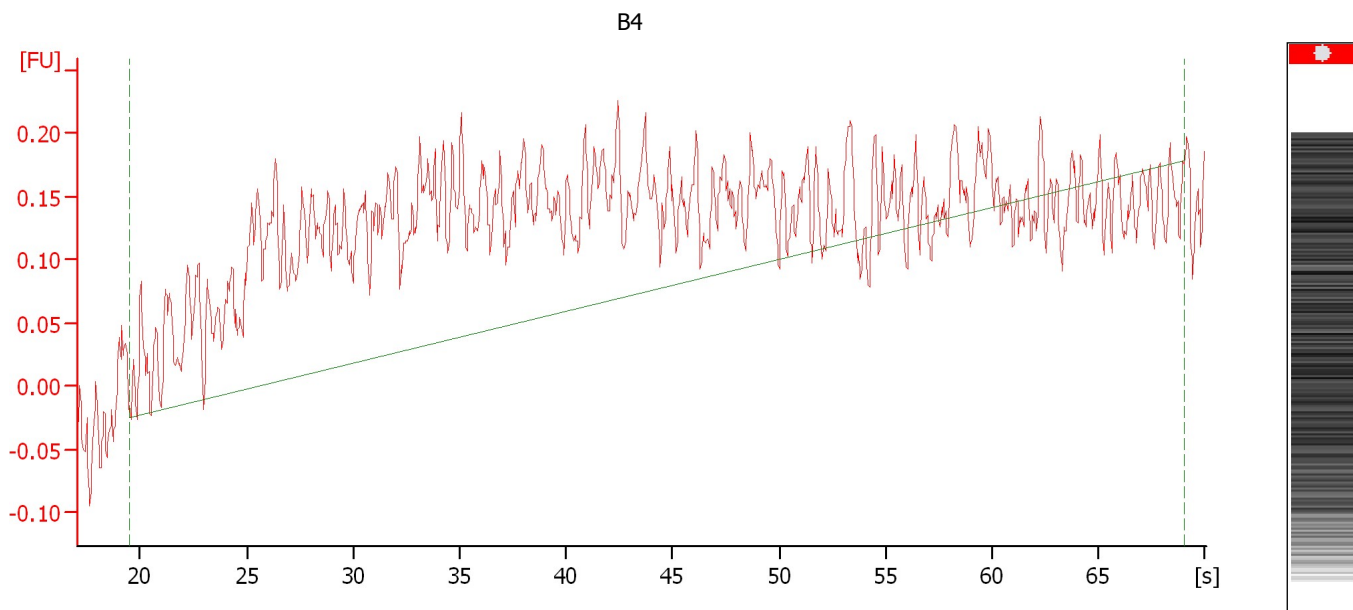
Electropherogram Summary Continued ...**Overall Results for sample 3 : B3**

RNA Area:	24.8	RNA Integrity Number (RIN):	2.1 (B.02.08)
RNA Concentration:	247 ng/ μ l	Result Flagging Color:	
rRNA Ratio [25s / 18s]:	0.0	Result Flagging Label:	RIN: 2.10

Assay Class: Plant RNA Nano
Data Path: C:\Documents and Settings\Bioanalyzer\2013-06-24\alan_bad.xad

Created: 6/24/2013 9:46:28 AM
Modified: 6/24/2013 10:14:41 AM

Electropherogram Summary Continued ...



Overall Results for sample 4 : B4

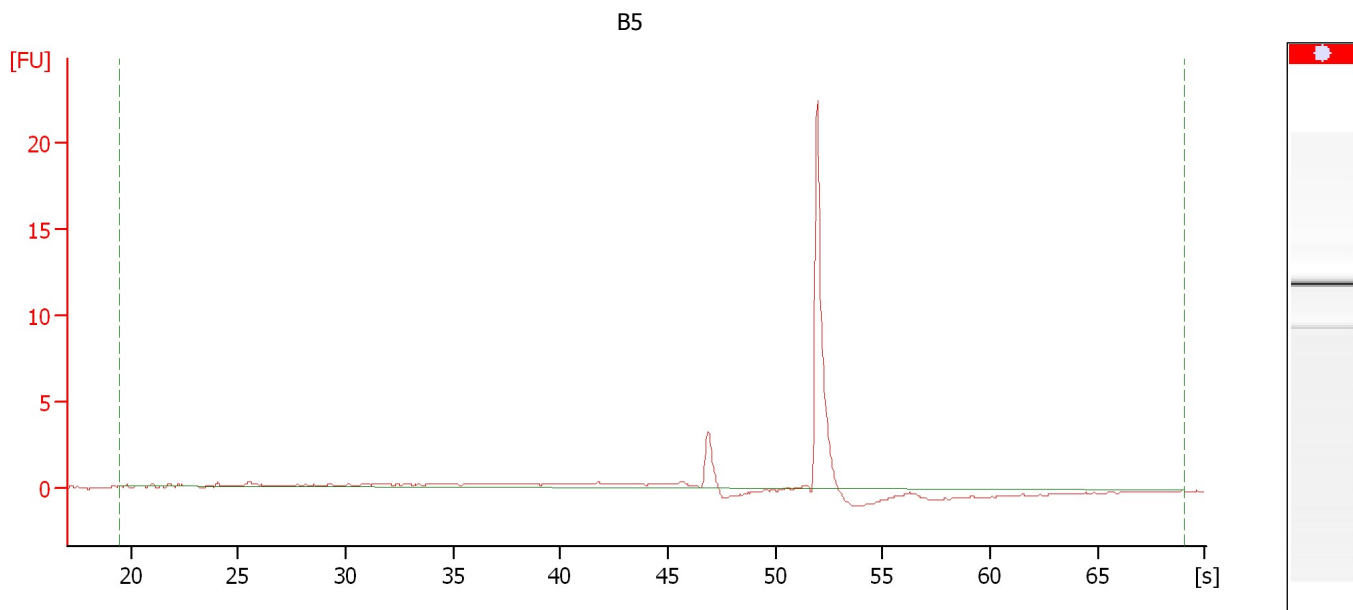
RNA Concentration: 86 ng/ μ l
rRNA Ratio [25s / 18s]: 0.0

Result Flagging Color:
Result Flagging Label: RIN N/A

Assay Class: Plant RNA Nano
Data Path: C:\Documents and Settings\Bioanalyzer\2013-06-24\alan_bad.xad

Created: 6/24/2013 9:46:28 AM
Modified: 6/24/2013 10:14:41 AM

Electropherogram Summary Continued ...



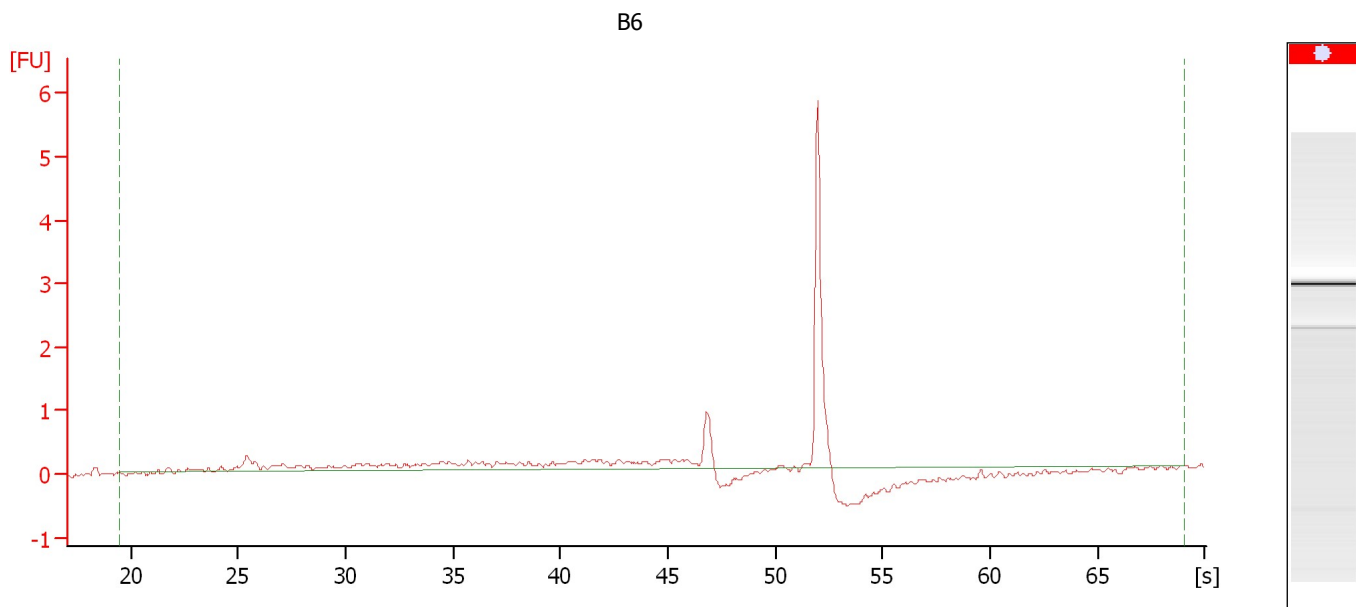
Overall Results for sample 5 : B5

RNA Area:	28.9	RNA Integrity Number (RIN):	2.6 (B.02.08)
RNA Concentration:	288 ng/ μ l	Result Flagging Color:	
rRNA Ratio [25s / 18s]:	0.0	Result Flagging Label:	RIN: 2.60

Assay Class: Plant RNA Nano
Data Path: C:\Documents and Settings\Bioanalyzer\2013-06-24\alan_bad.xad

Created: 6/24/2013 9:46:28 AM
Modified: 6/24/2013 10:14:41 AM

Electropherogram Summary Continued ...



Setpoint Deviations for sample 6 : B6

Height Threshold [FU] : 0

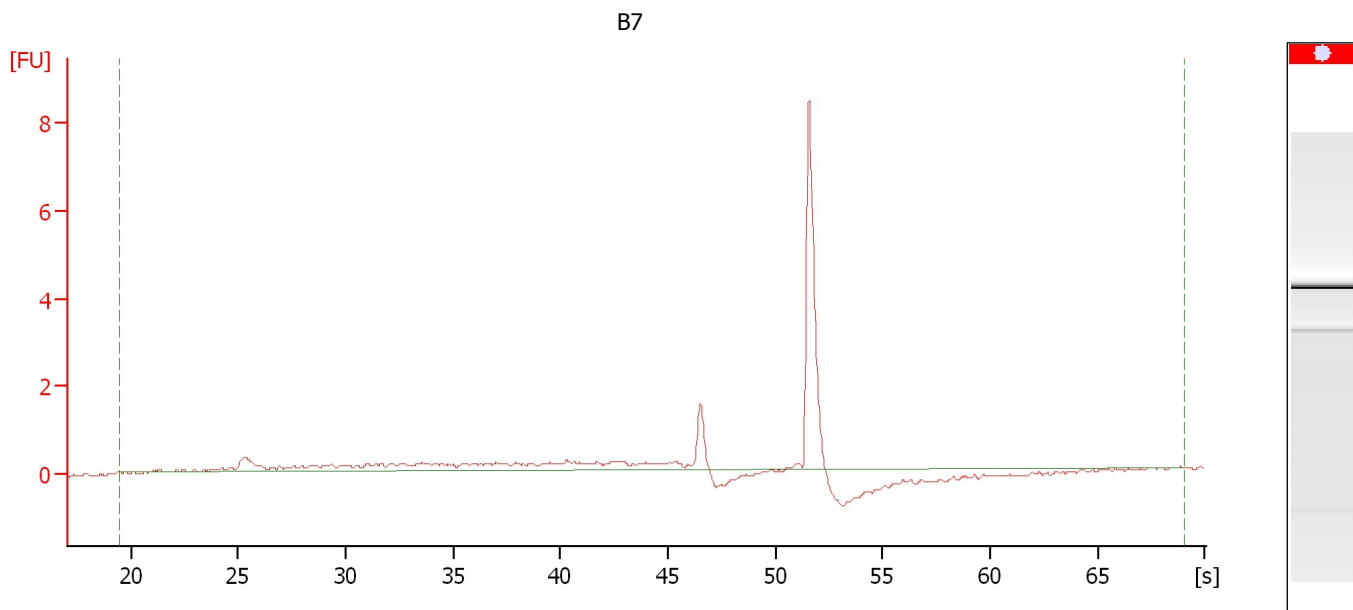
Overall Results for sample 6 : B6

RNA Area:	11.5	RNA Integrity Number (RIN):	2.6 (B.02.08)
RNA Concentration:	115 ng/ μ l	Result Flagging Color:	
rRNA Ratio [25s / 18s]:	0.0	Result Flagging Label:	RIN: 2.60

Assay Class: Plant RNA Nano
Data Path: C:\Documents and Settings\Bioanalyzer\2013-06-24\alan_bad.xad

Created: 6/24/2013 9:46:28 AM
Modified: 6/24/2013 10:14:41 AM

Electropherogram Summary Continued ...



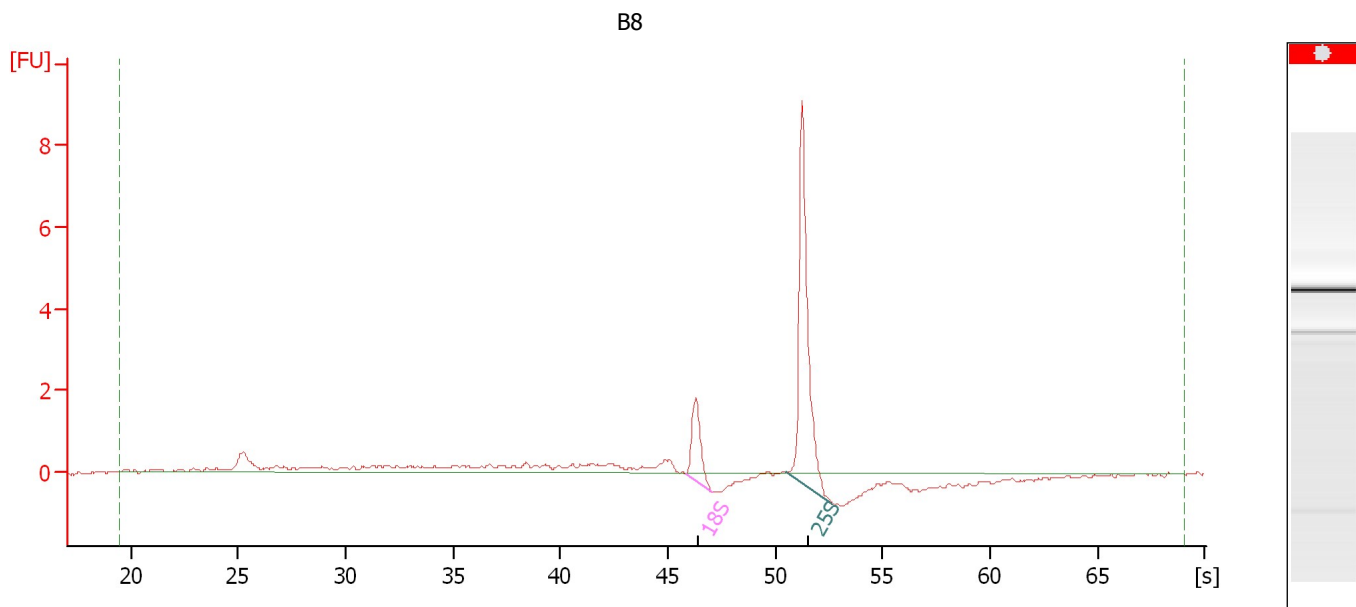
Overall Results for sample 7 : B7

RNA Area:	16.4	RNA Integrity Number (RIN):	2.6 (B.02.08)
RNA Concentration:	163 ng/ μ l	Result Flagging Color:	
rRNA Ratio [25s / 18s]:	0.0	Result Flagging Label:	RIN: 2.60

Assay Class: Plant RNA Nano
 Data Path: C:\Documents and Settings\Bioanalyzer\2013-06-24\alan_bad.xad

Created: 6/24/2013 9:46:28 AM
 Modified: 6/24/2013 10:14:41 AM

Electropherogram Summary Continued ...



Overall Results for sample 8 : B8

RNA Area:	20.6	RNA Integrity Number (RIN):	N/A (B.02.08)
RNA Concentration:	206 ng/μl	Result Flagging Color:	
rRNA Ratio [25s / 18s]:	4.2	Result Flagging Label:	RIN N/A

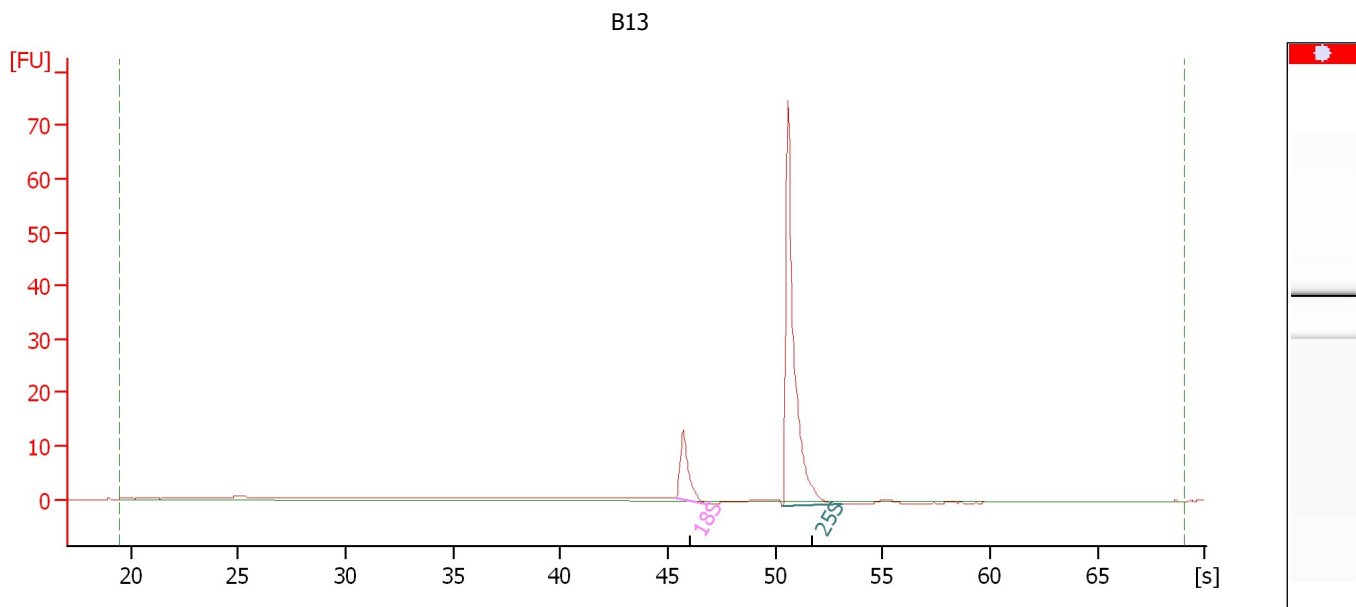
Fragment table for sample 8 : B8

Name	Start Size [nt]	End Size [nt]	Area	% of total Area
18S	54,460	60,213	2.1	10.0
25S	76,993	87,301	8.7	42.2

Assay Class: Plant RNA Nano
 Data Path: C:\Documents and Settings\Bioanalyzer\2013-06-24\alan_bad.xad

Created: 6/24/2013 9:46:28 AM
 Modified: 6/24/2013 10:14:41 AM

Electropherogram Summary Continued ...



Overall Results for sample 9 : B13

RNA Area:	97.0	RNA Integrity Number (RIN):	7.1 (B.02.08)
RNA Concentration:	967 ng/ μ l	Result Flagging Color:	
rRNA Ratio [25s / 18s]:	5.6	Result Flagging Label:	RIN: 7.10

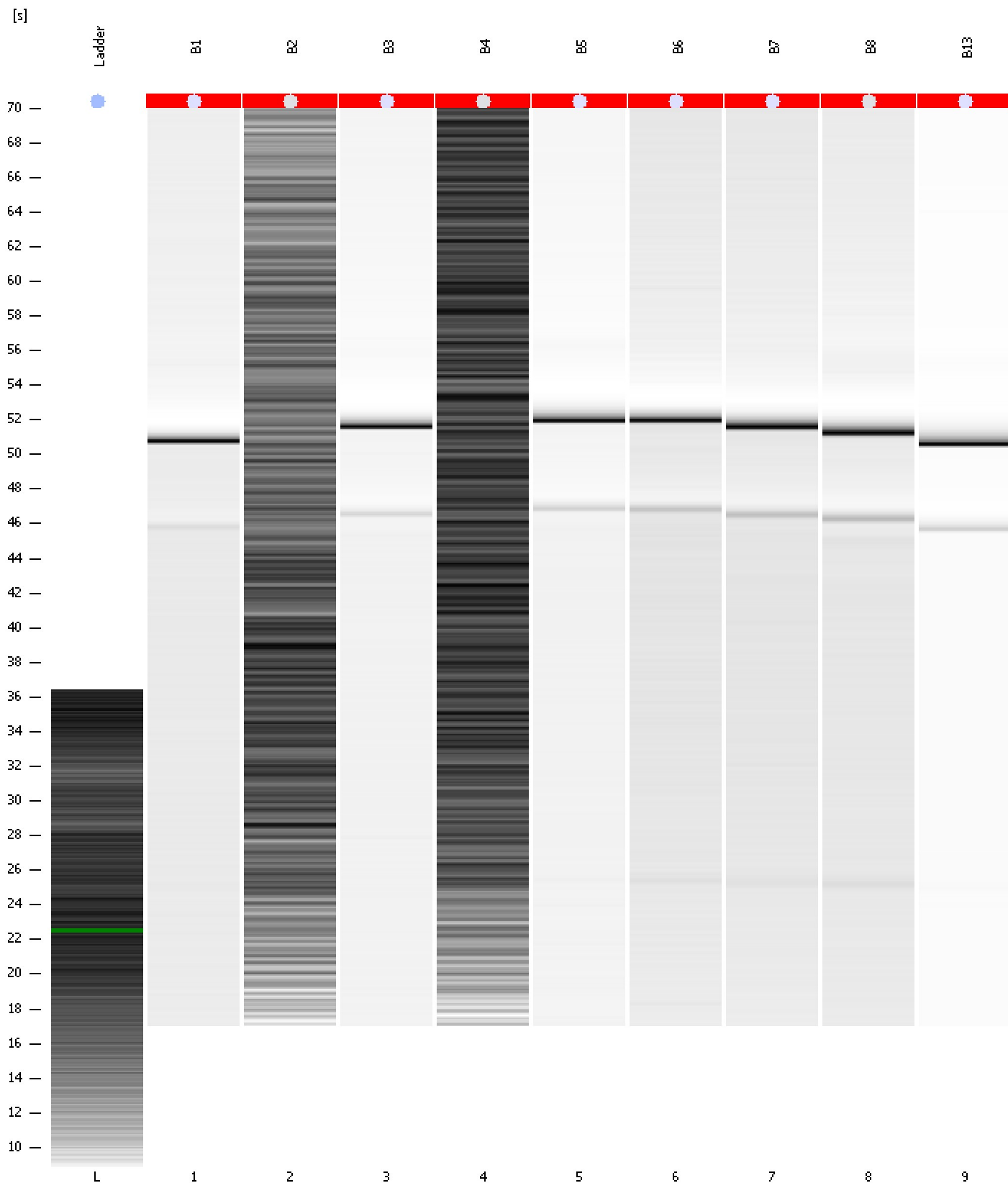
Fragment table for sample 9 : B13

Name	Start Size [nt]	End Size [nt]	Area	% of total Area
18S	52,542	59,254	12.3	12.6
25S	76,035	89,459	68.4	70.5

Assay Class: Plant RNA Nano
Data Path: C:\Documents and Settings\Bioanalyzer\2013-06-24\alan_bad.xad

Created: 6/24/2013 9:46:28 AM
Modified: 6/24/2013 10:14:41 AM

Gel Image

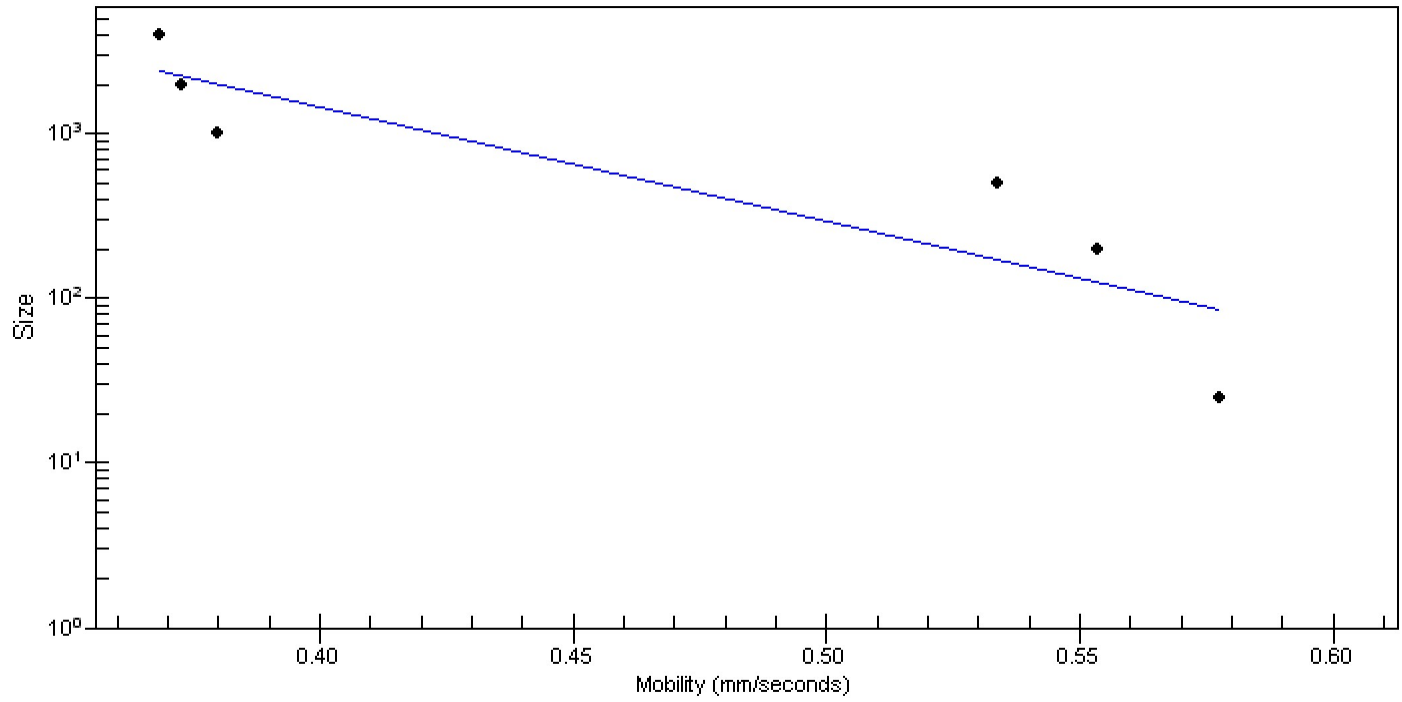


Assay Class: Plant RNA Nano
Data Path: C:\Documents and Settings\Bioanalyzer\2013-06-24\alan_bad.xad

Created: 6/24/2013 9:46:28 AM
Modified: 6/24/2013 10:14:41 AM

Curves

Standard Curve



Assay Class: Plant RNA Nano
 Data Path: C:\Documents and Settings\Bioanalyzer\2013-06-24\alan_bad.xad

Created: 6/24/2013 9:46:28 AM
 Modified: 6/24/2013 10:14:41 AM

Run Logbook

Description	Number	Source	Category	Sub Category	Time	Time Zone	User	Host
Run ended on port 1 (Number of wells acquired: 13)		Instrument	Run		6/24/2013 10:10:18 AM	(GMT --07:00) Pacific Standard Time	UC Davis	D8XSMGH1
Run started on port 1 (File: C:\Documents and Settings\Bioanalyzer\2013-06-24\2013-06-24_001.xad)		Instrument	Run		6/24/2013 9:46:33 AM	(GMT --07:00) Pacific Standard Time	UC Davis	D8XSMGH1
Product Number : G2938B		Instrument	Run		6/24/2013 9:46:33 AM	(GMT --07:00) Pacific Standard Time	UC Davis	D8XSMGH1
Name :		Instrument	Run		6/24/2013 9:46:33 AM	(GMT --07:00) Pacific Standard Time	UC Davis	D8XSMGH1
Vendor : Agilent Technologies		Instrument	Run		6/24/2013 9:46:33 AM	(GMT --07:00) Pacific Standard Time	UC Davis	D8XSMGH1
Serial# : DE13701086		Instrument	Run		6/24/2013 9:46:33 AM	(GMT --07:00) Pacific Standard Time	UC Davis	D8XSMGH1
Firmware : C.01.069		Instrument	Run		6/24/2013 9:46:33 AM	(GMT --07:00) Pacific Standard Time	UC Davis	D8XSMGH1
Cartridge : Electrode		Instrument	Run		6/24/2013 9:46:33 AM	(GMT --07:00) Pacific Standard Time	UC Davis	D8XSMGH1