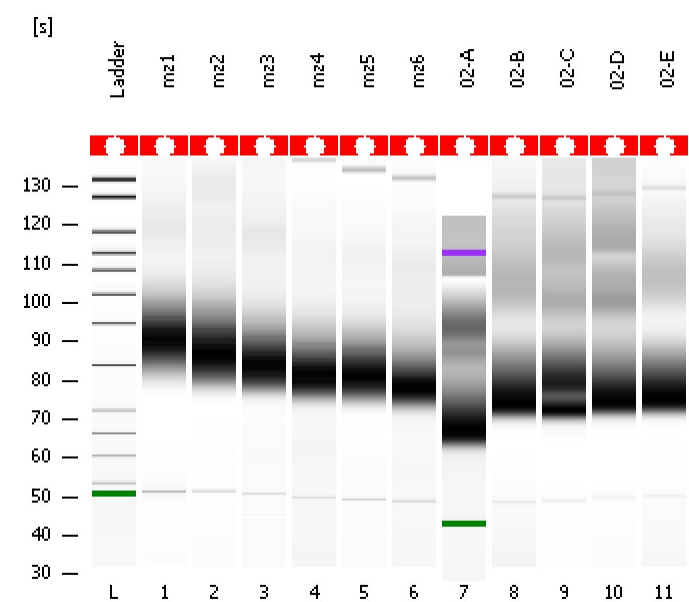


Assay Class: High Sensitivity DNA Assay
Data Path: C:\...ents and Settings\Bioanalyzer\2013-12-10\2013-12-10_001.xad

Created: 12/10/2013 9:20:28 AM
Modified: 12/10/2013 10:01:49 AM

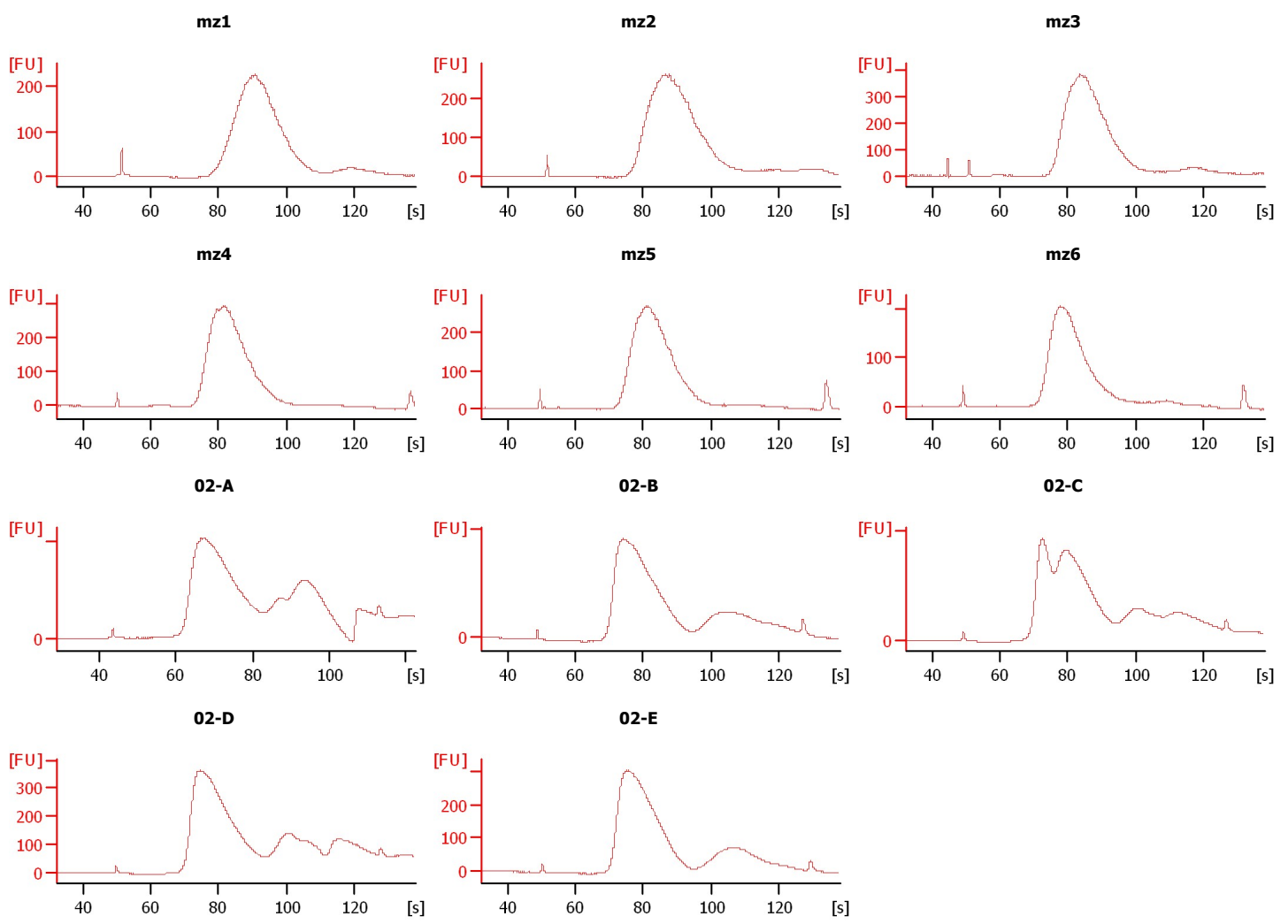
Electrophoresis File Run Summary



Instrument Information:
Instrument Name: DE13701086 Firmware: C.01.069
Serial#: DE13701086 Type: G2938B

Assay Information:
Assay Origin Path: C:\Program Files\Agilent\2100 bioanalyzer\2100 expert\assays\dsDNA\High Sensitivity DNA.xsy
Assay Class: High Sensitivity DNA Assay
Version: 1.03
Assay Comments: Copyright © 2003-2010 Agilent Technologies

Chip Information:
Chip Lot #:
Reagent Kit Lot #:
Chip Comments:



Assay Class: High Sensitivity DNA Assay
 Data Path: C:\...ents and Settings\Bioanalyzer\2013-12-10\2013-12-10_001.xad

Created: 12/10/2013 9:20:28 AM
 Modified: 12/10/2013 10:01:49 AM

Electrophoresis File Run Summary (Chip Summary)

Sample Name	Sample Comment	Rest. Digest	Status	Observation	Result Label	Result Color
mz1		<input type="checkbox"/>	✓			
mz2		<input type="checkbox"/>	✓			
mz3		<input type="checkbox"/>	✓			
mz4		<input type="checkbox"/>	✓			
mz5		<input type="checkbox"/>	✓			
mz6		<input type="checkbox"/>	✓			
02-A		<input type="checkbox"/>	✓			
02-B		<input type="checkbox"/>	✓			
02-C		<input type="checkbox"/>	✓			
02-D		<input type="checkbox"/>	✓			
02-E		<input type="checkbox"/>	✓			
Ladder		<input type="checkbox"/>	✓			

Chip Lot #

Reagent Kit Lot #

Chip Comments :

Assay Class: High Sensitivity DNA Assay
 Data Path: C:\...ents and Settings\Bioanalyzer\2013-12-10\2013-12-10_001.xad

Created: 12/10/2013 9:20:28 AM
 Modified: 12/10/2013 10:01:49 AM

Electrophoresis Assay Details

General Analysis Settings

Number of Available Sample and Ladder Wells (Max.) : 12
 Minimum Visible Range [s] : 32
 Maximum Visible Range [s] : 138
 Start Analysis Time Range [s] : 33
 End Analysis Time Range [s] : 137.5
 Ladder Concentration [pg/μl] : 1950
 Uses Standard Area for Ladder Fragments
 Lower Marker Concentration [pg/μl] : 125
 Upper Marker Concentration [pg/μl] : 75
 Used Upper Marker for Quantitation
 Standard Curve Fit is Point to Point
 Show Data Aligned to Lower and Upper Marker

Integrator Settings

Integration Start Time [s] : 33.05
 Integration End Time [s] : 137
 Slope Threshold : 0.8
 Height Threshold [FU] : 5
 Area Threshold : 0.1
 Width Threshold [s] : 0.6
 Baseline Plateau [s] : 0.5

Filter Settings

Filter Width [s] : 0.5
 Polynomial Order : 4

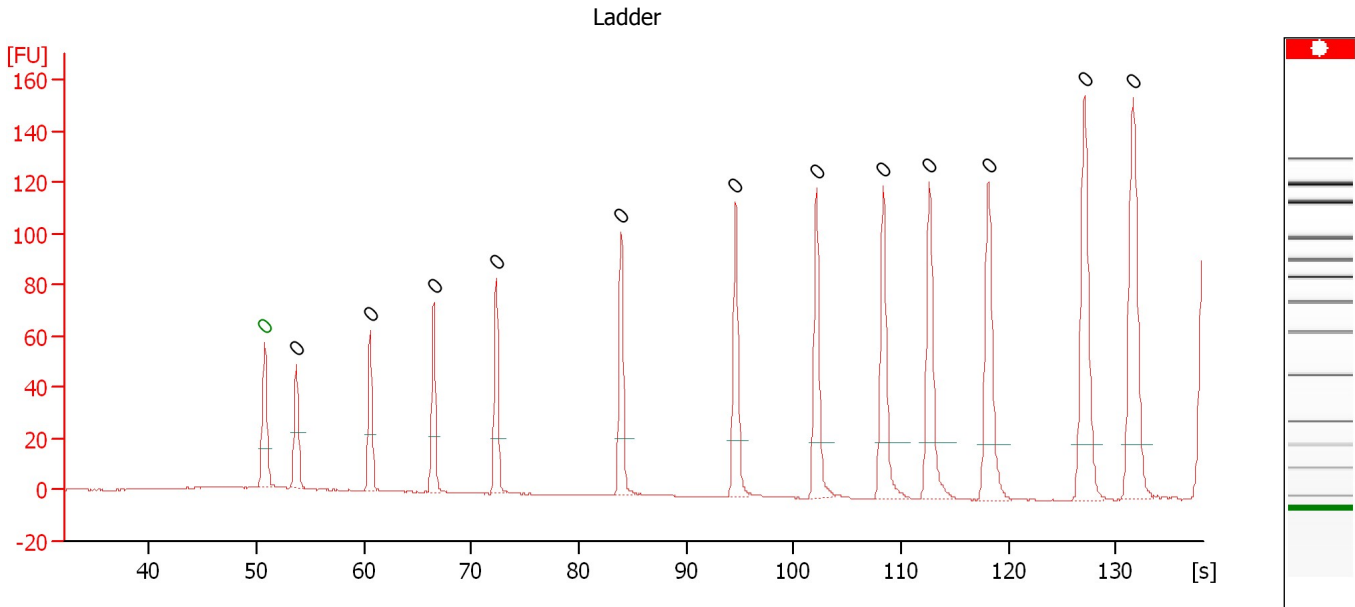
Ladder

Ladder Peak	Size	Area
1	35	160
2	50	210
3	100	208
4	150	221
5	200	242
6	300	270
7	400	305
8	500	306
9	600	336
10	700	321
11	1000	366
12	2000	413
13	3000	411
14	7000	400
15	10380	214

Assay Class: High Sensitivity DNA Assay
 Data Path: C:\...ents and Settings\Bioanalyzer\2013-12-10\2013-12-10_001.xad

Created: 12/10/2013 9:20:28 AM
 Modified: 12/10/2013 10:01:49 AM

Electropherogram Summary



Overall Results for Ladder

Noise: 0.1

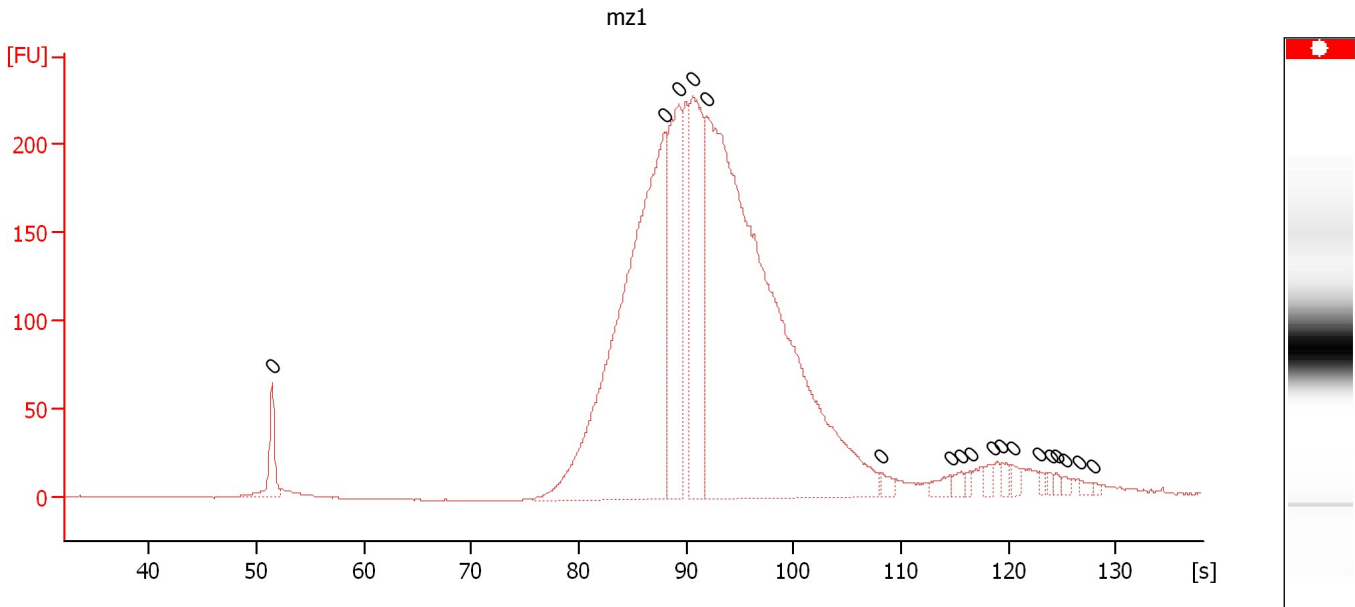
Peak table for Ladder

Peak	Aligned Migration Time [s]	Size [bp]	Conc. [pg/μl]	Molarity [pmol/l]	Observations
1	50.75	0	0.00	0.0	Lower Marker
2	53.70	0	0.00	0.0	Ladder Peak
3	60.60	0	0.00	0.0	Ladder Peak
4	66.50	0	0.00	0.0	Ladder Peak
5	72.30	0	0.00	0.0	Ladder Peak
6	83.95	0	0.00	0.0	Ladder Peak
7	94.60	0	0.00	0.0	Ladder Peak
8	102.15	0	0.00	0.0	Ladder Peak
9	108.35	0	0.00	0.0	Ladder Peak
10	112.65	0	0.00	0.0	Ladder Peak
11	118.15	0	0.00	0.0	Ladder Peak
12	127.10	0	0.00	0.0	Ladder Peak
13	131.60	0	0.00	0.0	Ladder Peak

Assay Class: High Sensitivity DNA Assay
 Data Path: C:\...ents and Settings\Bioanalyzer\2013-12-10\2013-12-10_001.xad

Created: 12/10/2013 9:20:28 AM
 Modified: 12/10/2013 10:01:49 AM

Electropherogram Summary Continued ...



Overall Results for sample 1 : mz1

Number of peaks found: 0 Noise: 0.2

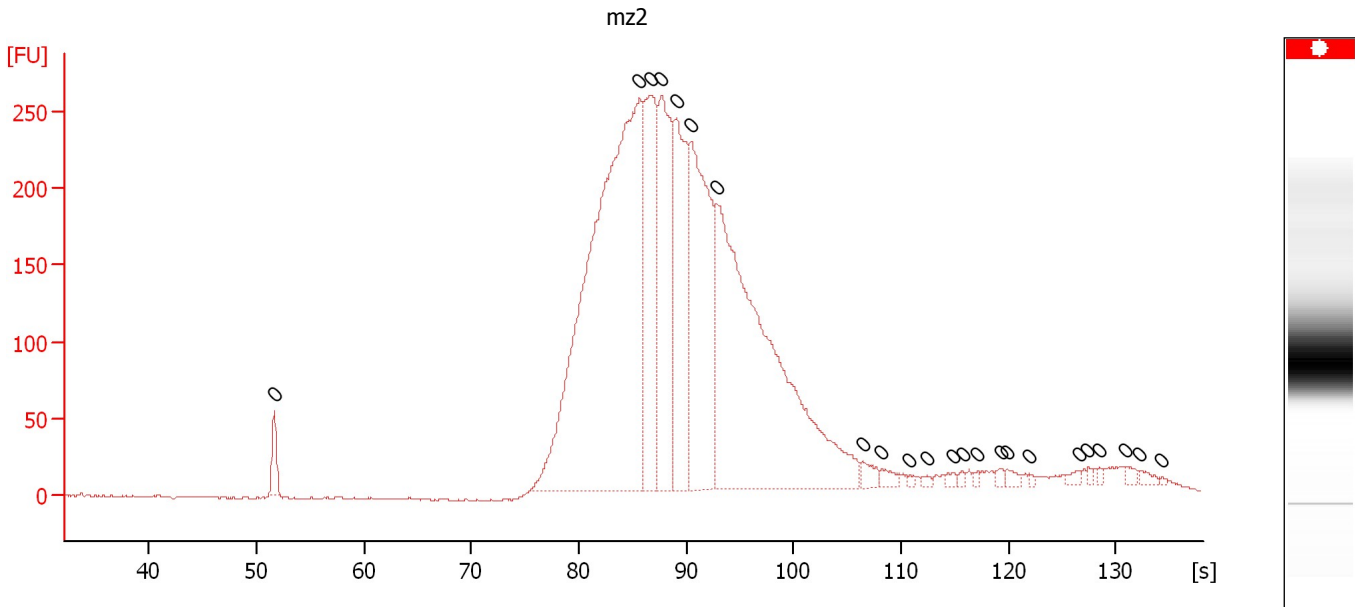
Peak table for sample 1 : mz1

Peak	Aligned Migration Time [s]	Size [bp]	Conc. [pg/μl]	Molarity [pmol/l]	Observations
1	51.45	0	0.00	0.0	
2	87.95	0	0.00	0.0	
3	89.30	0	0.00	0.0	
4	90.60	0	0.00	0.0	
5	91.85	0	0.00	0.0	
6	108.10	0	0.00	0.0	
7	114.60	0	0.00	0.0	
8	115.60	0	0.00	0.0	
9	116.45	0	0.00	0.0	
10	118.50	0	0.00	0.0	
11	119.35	0	0.00	0.0	
12	120.40	0	0.00	0.0	
13	122.95	0	0.00	0.0	
14	123.90	0	0.00	0.0	
15	124.45	0	0.00	0.0	
16	125.25	0	0.00	0.0	
17	126.55	0	0.00	0.0	
18	127.90	0	0.00	0.0	

Assay Class: High Sensitivity DNA Assay
 Data Path: C:\...ents and Settings\Bioanalyzer\2013-12-10\2013-12-10_001.xad

Created: 12/10/2013 9:20:28 AM
 Modified: 12/10/2013 10:01:49 AM

Electropherogram Summary Continued ...



Overall Results for sample 2 : mz2

Number of peaks found: 0 Noise: 0.6

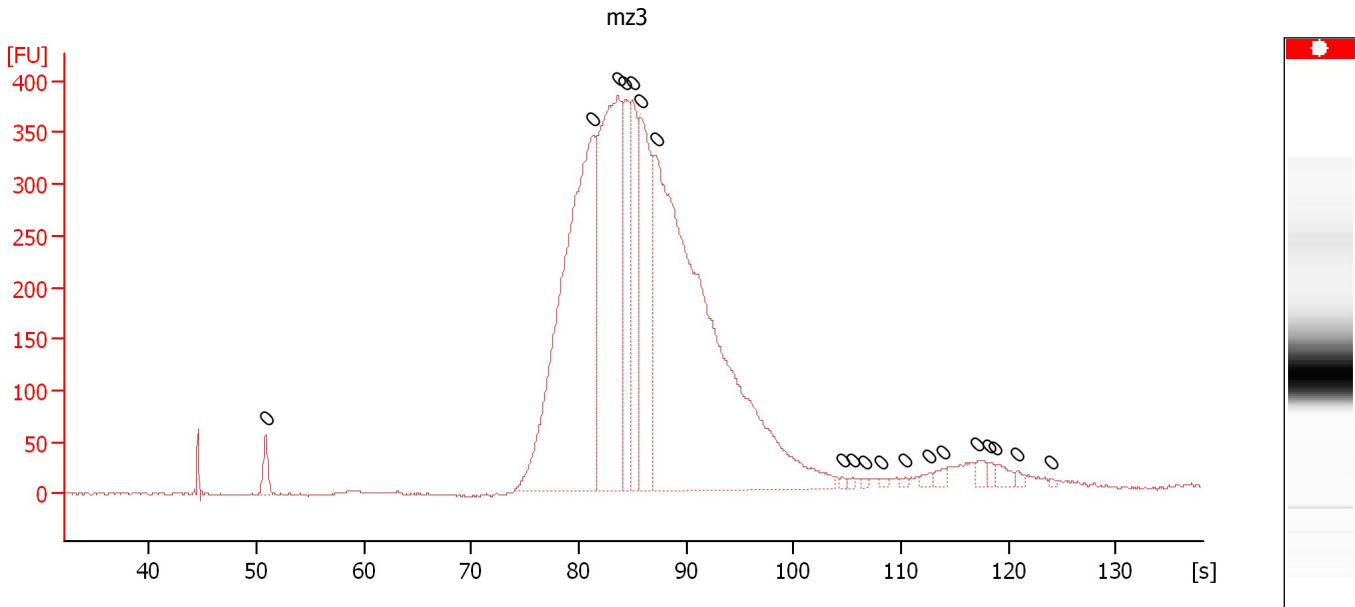
Peak table for sample 2 : mz2

Peak	Aligned Migration Time [s]	Size [bp]	Conc. [pg/μl]	Molarity [pmol/l]	Observations
1	51.65	0	0.00	0.0	
2	85.65	0	0.00	0.0	
3	86.70	0	0.00	0.0	
4	87.65	0	0.00	0.0	
5	89.10	0	0.00	0.0	
6	90.40	0	0.00	0.0	
7	92.85	0	0.00	0.0	
8	106.40	0	0.00	0.0	
9	108.20	0	0.00	0.0	
10	110.70	0	0.00	0.0	
11	112.40	0	0.00	0.0	
12	114.85	0	0.00	0.0	
13	115.70	0	0.00	0.0	
14	117.15	0	0.00	0.0	
15	119.30	0	0.00	0.0	
16	119.85	0	0.00	0.0	
17	121.90	0	0.00	0.0	
18	126.55	0	0.00	0.0	
19	127.40	0	0.00	0.0	
20	128.50	0	0.00	0.0	
21	130.90	0	0.00	0.0	
22	132.15	0	0.00	0.0	
23	134.25	0	0.00	0.0	

Assay Class: High Sensitivity DNA Assay
 Data Path: C:\...ents and Settings\Bioanalyzer\2013-12-10\2013-12-10_001.xad

Created: 12/10/2013 9:20:28 AM
 Modified: 12/10/2013 10:01:49 AM

Electropherogram Summary Continued ...



Overall Results for sample 3 : mz3

Number of peaks found: 0 Noise: 0.7

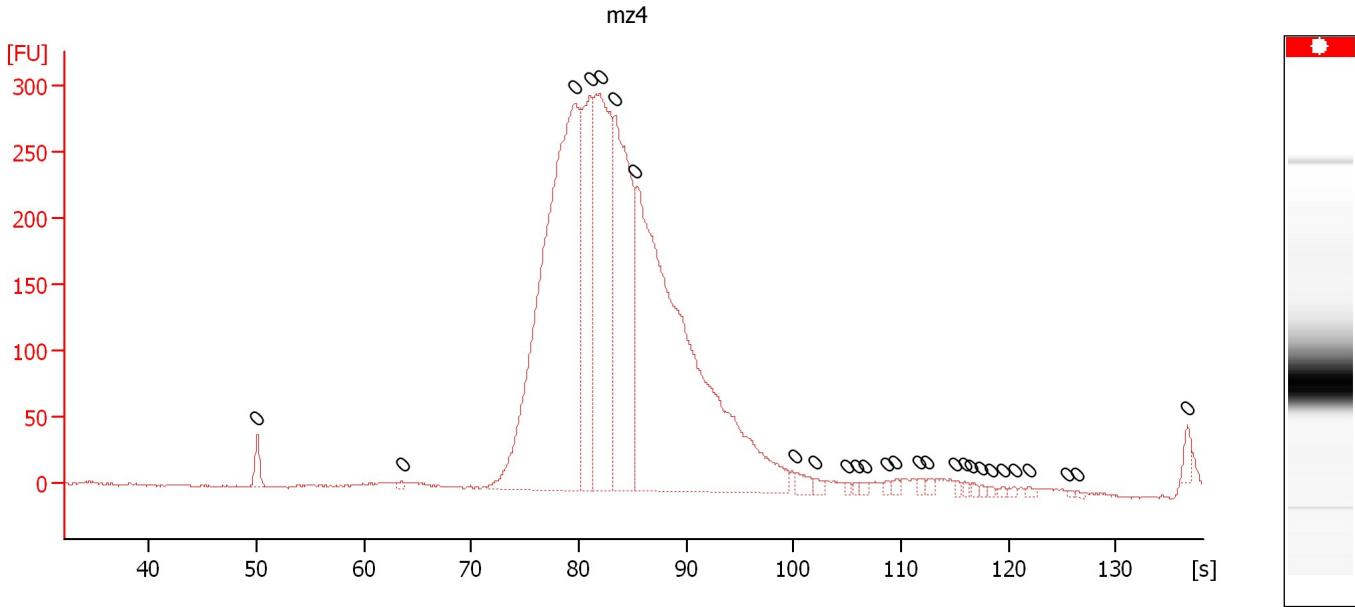
Peak table for sample 3 : mz3

Peak	Aligned Migration Time [s]	Size [bp]	Conc. [pg/μl]	Molarity [pmol/l]	Observations
1	50.85	0	0.00	0.0	
2	81.35	0	0.00	0.0	
3	83.65	0	0.00	0.0	
4	84.30	0	0.00	0.0	
5	84.95	0	0.00	0.0	
6	85.75	0	0.00	0.0	
7	87.20	0	0.00	0.0	
8	104.55	0	0.00	0.0	
9	105.45	0	0.00	0.0	
10	106.60	0	0.00	0.0	
11	108.15	0	0.00	0.0	
12	110.45	0	0.00	0.0	
13	112.70	0	0.00	0.0	
14	114.00	0	0.00	0.0	
15	117.15	0	0.00	0.0	
16	118.15	0	0.00	0.0	
17	118.85	0	0.00	0.0	
18	120.85	0	0.00	0.0	
19	124.00	0	0.00	0.0	

Assay Class: High Sensitivity DNA Assay
 Data Path: C:\...ents and Settings\Bioanalyzer\2013-12-10\2013-12-10_001.xad

Created: 12/10/2013 9:20:28 AM
 Modified: 12/10/2013 10:01:49 AM

Electropherogram Summary Continued ...



Overall Results for sample 4 : m4

Number of peaks found: 0 Noise: 0.7

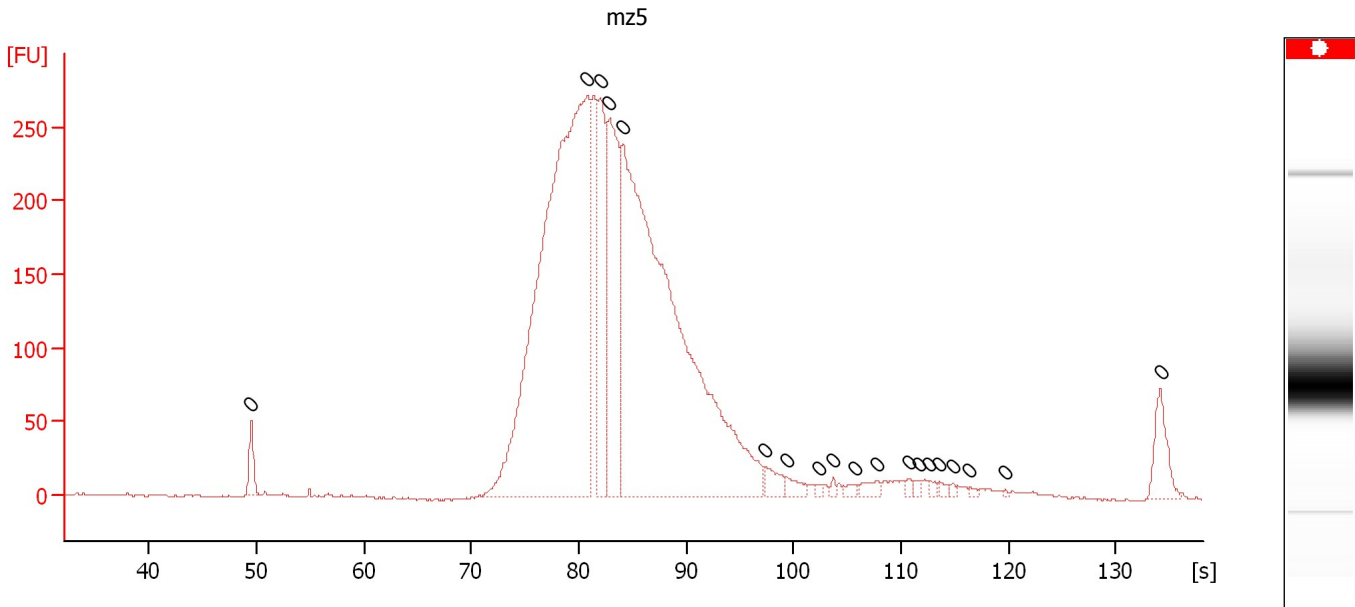
Peak table for sample 4 : m4

Peak	Aligned Migration Time [s]	Size [bp]	Conc. [pg/μl]	Molarity [pmol/l]	Observations
1	50.05	0	0.00	0.0	
2	63.50	0	0.00	0.0	
3	79.65	0	0.00	0.0	
4	81.10	0	0.00	0.0	
5	81.95	0	0.00	0.0	
6	83.40	0	0.00	0.0	
7	85.30	0	0.00	0.0	
8	100.20	0	0.00	0.0	
9	102.05	0	0.00	0.0	
10	104.90	0	0.00	0.0	
11	105.85	0	0.00	0.0	
12	106.60	0	0.00	0.0	
13	108.75	0	0.00	0.0	
14	109.45	0	0.00	0.0	
15	111.75	0	0.00	0.0	
16	112.50	0	0.00	0.0	
17	115.00	0	0.00	0.0	
18	115.95	0	0.00	0.0	
19	116.55	0	0.00	0.0	
20	117.45	0	0.00	0.0	
21	118.30	0	0.00	0.0	
22	119.50	0	0.00	0.0	
23	120.55	0	0.00	0.0	
24	121.95	0	0.00	0.0	
25	125.50	0	0.00	0.0	
26	126.40	0	0.00	0.0	
27	136.65	0	0.00	0.0	

Assay Class: High Sensitivity DNA Assay
 Data Path: C:\...ents and Settings\Bioanalyzer\2013-12-10\2013-12-10_001.xad

Created: 12/10/2013 9:20:28 AM
 Modified: 12/10/2013 10:01:49 AM

Electropherogram Summary Continued ...



Overall Results for sample 5 : mz5

Number of peaks found: 0 Noise: 0.7

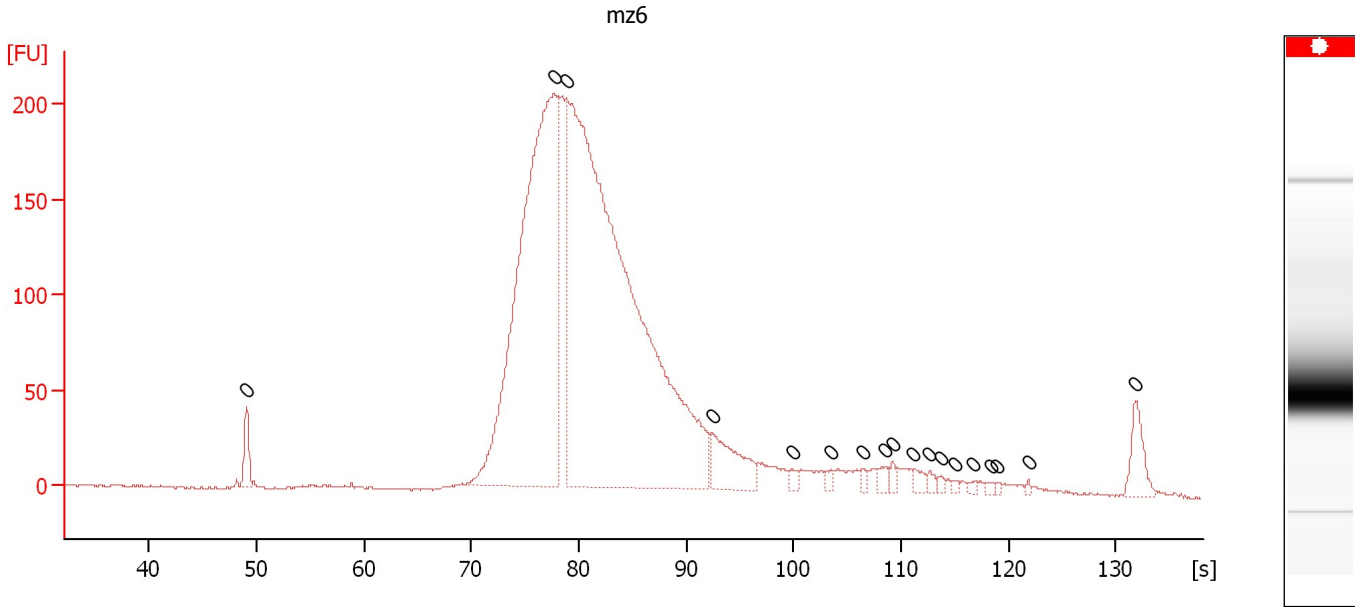
Peak table for sample 5 : mz5

Peak	Aligned Migration Time [s]	Size [bp]	Conc. [pg/μl]	Molarity [pmol/l]	Observations
1	49.50	0	0.00	0.0	
2	80.80	0	0.00	0.0	
3	81.95	0	0.00	0.0	
4	82.85	0	0.00	0.0	
5	84.15	0	0.00	0.0	
6	97.40	0	0.00	0.0	
7	99.30	0	0.00	0.0	
8	102.40	0	0.00	0.0	
9	103.70	0	0.00	0.0	
10	105.65	0	0.00	0.0	
11	107.70	0	0.00	0.0	
12	110.75	0	0.00	0.0	
13	111.65	0	0.00	0.0	
14	112.65	0	0.00	0.0	
15	113.55	0	0.00	0.0	
16	114.85	0	0.00	0.0	
17	116.40	0	0.00	0.0	
18	119.70	0	0.00	0.0	
19	134.15	0	0.00	0.0	

Assay Class: High Sensitivity DNA Assay
 Data Path: C:\...ents and Settings\Bioanalyzer\2013-12-10\2013-12-10_001.xad

Created: 12/10/2013 9:20:28 AM
 Modified: 12/10/2013 10:01:49 AM

Electropherogram Summary Continued ...



Overall Results for sample 6 : mz6

Number of peaks found: 0 Noise: 0.6

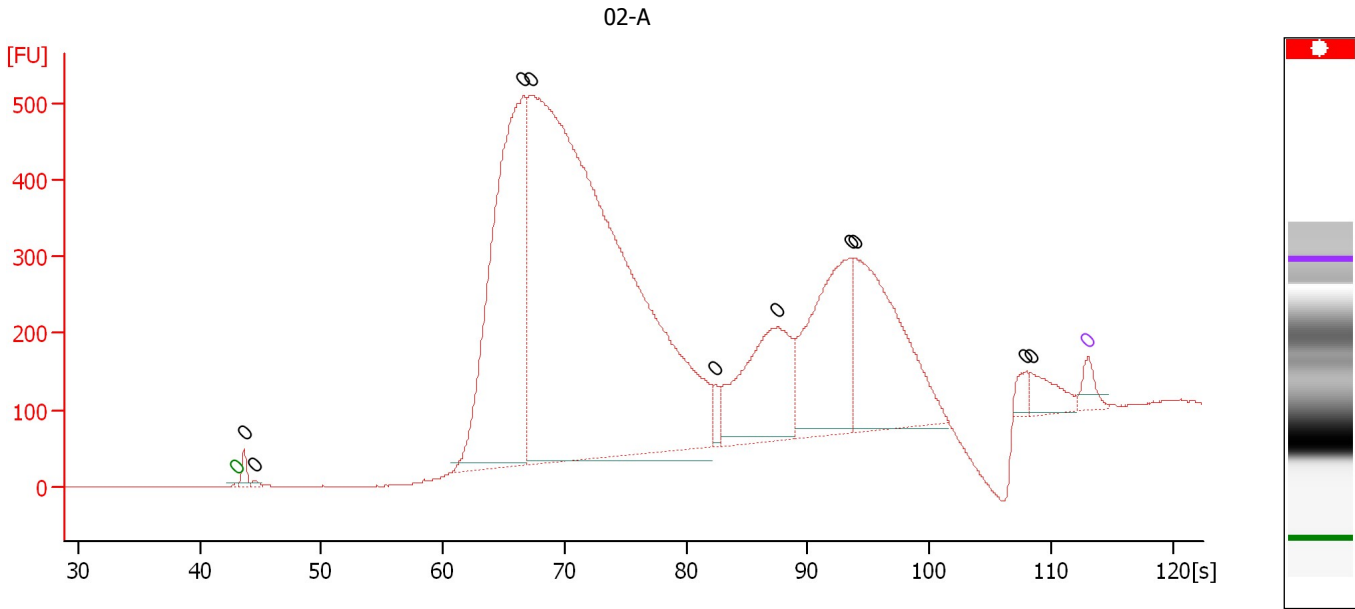
Peak table for sample 6 : mz6

Peak	Aligned Migration Time [s]	Size [bp]	Conc. [pg/μl]	Molarity [pmol/l]	Observations
1	49.05	0	0.00	0.0	
2	77.70	0	0.00	0.0	
3	78.85	0	0.00	0.0	
4	92.40	0	0.00	0.0	
5	99.85	0	0.00	0.0	
6	103.45	0	0.00	0.0	
7	106.55	0	0.00	0.0	
8	108.60	0	0.00	0.0	
9	109.25	0	0.00	0.0	
10	111.15	0	0.00	0.0	
11	112.70	0	0.00	0.0	
12	113.70	0	0.00	0.0	
13	115.05	0	0.00	0.0	
14	116.70	0	0.00	0.0	
15	118.30	0	0.00	0.0	
16	119.00	0	0.00	0.0	
17	121.85	0	0.00	0.0	
18	131.80	0	0.00	0.0	

Assay Class: High Sensitivity DNA Assay
 Data Path: C:\...ents and Settings\Bioanalyzer\2013-12-10\2013-12-10_001.xad

Created: 12/10/2013 9:20:28 AM
 Modified: 12/10/2013 10:01:49 AM

Electropherogram Summary Continued ...



Overall Results for sample 7 : 02-A

Number of peaks found: 10 Noise: 0.4

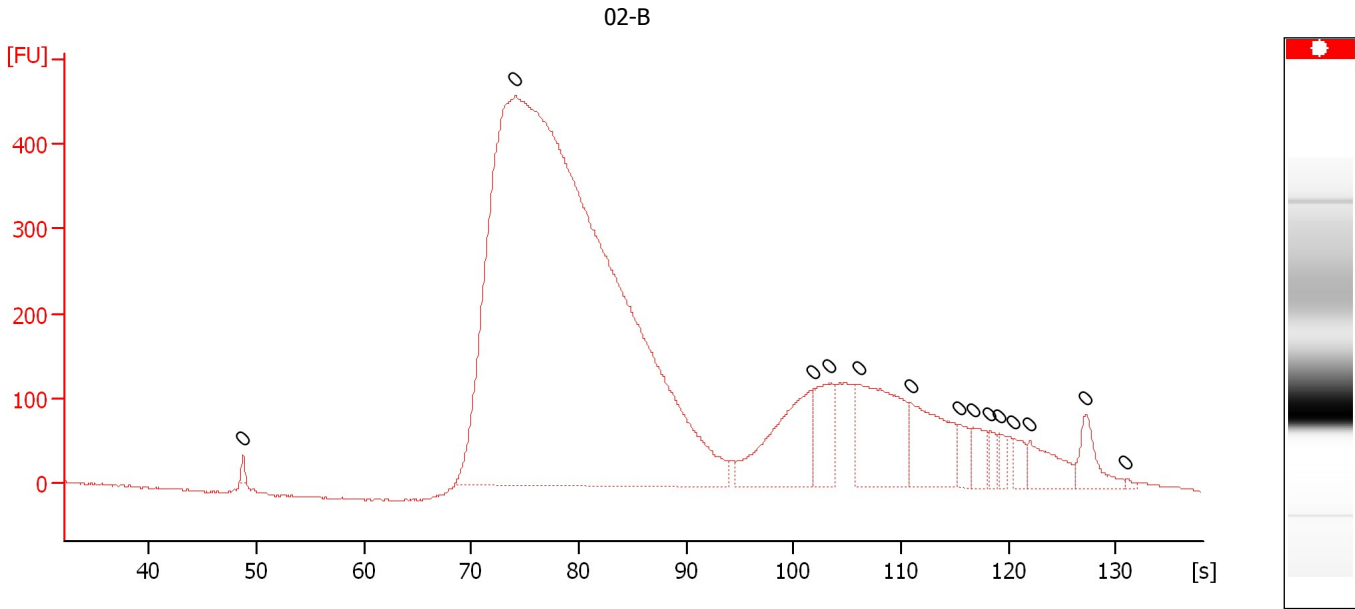
Peak table for sample 7 : 02-A

Peak	Aligned Migration Time [s]	Size [bp]	Conc. [pg/μl]	Molarity [pmol/l]	Observations
1	43.00	0	0.00	0.0	Lower Marker
2	43.66	0	0.00	0.0	
3	44.50	0	0.00	0.0	
4	66.63	0	0.00	0.0	
5	67.29	0	0.00	0.0	
6	82.39	0	0.00	0.0	
7	87.52	0	0.00	0.0	
8	93.48	0	0.00	0.0	
9	93.88	0	0.00	0.0	
10	107.88	0	0.00	0.0	
11	108.32	0	0.00	0.0	
12	113.00	0	0.00	0.0	Upper Marker

Assay Class: High Sensitivity DNA Assay
Data Path: C:\...ents and Settings\Bioanalyzer\2013-12-10\2013-12-10_001.xad

Created: 12/10/2013 9:20:28 AM
Modified: 12/10/2013 10:01:49 AM

Electropherogram Summary Continued ...



Overall Results for sample 8 : 02-B

Number of peaks found: 0 Noise: 1.0

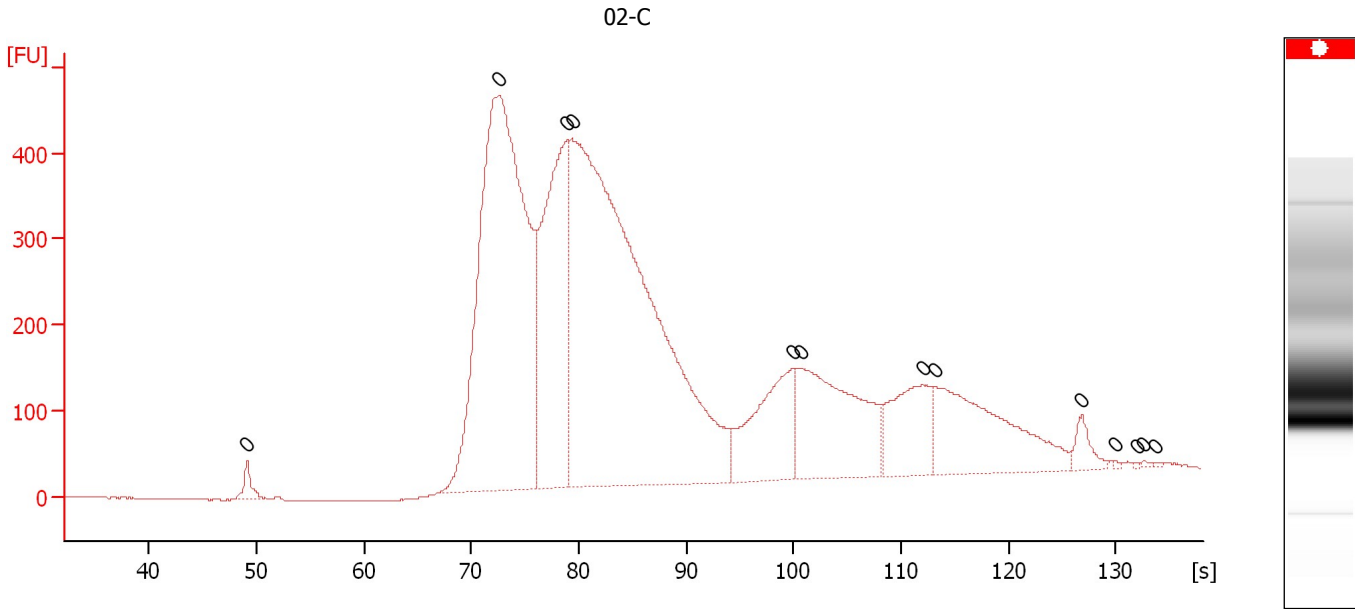
Peak table for sample 8 : 02-B

Peak	Aligned Migration Time [s]	Size [bp]	Conc. [pg/μl]	Molarity [pmol/l]	Observations
1	48.75	0	0.00	0.0	
2	74.10	0	0.00	0.0	
3	101.80	0	0.00	0.0	
4	103.30	0	0.00	0.0	
5	106.05	0	0.00	0.0	
6	110.85	0	0.00	0.0	
7	115.40	0	0.00	0.0	
8	116.70	0	0.00	0.0	
9	118.25	0	0.00	0.0	
10	119.15	0	0.00	0.0	
11	120.50	0	0.00	0.0	
12	122.00	0	0.00	0.0	
13	127.20	0	0.00	0.0	
14	130.95	0	0.00	0.0	

Assay Class: High Sensitivity DNA Assay
 Data Path: C:\...ents and Settings\Bioanalyzer\2013-12-10\2013-12-10_001.xad

Created: 12/10/2013 9:20:28 AM
 Modified: 12/10/2013 10:01:49 AM

Electropherogram Summary Continued ...



Overall Results for sample 9 : 02-C

Number of peaks found: 0 Noise: 0.4

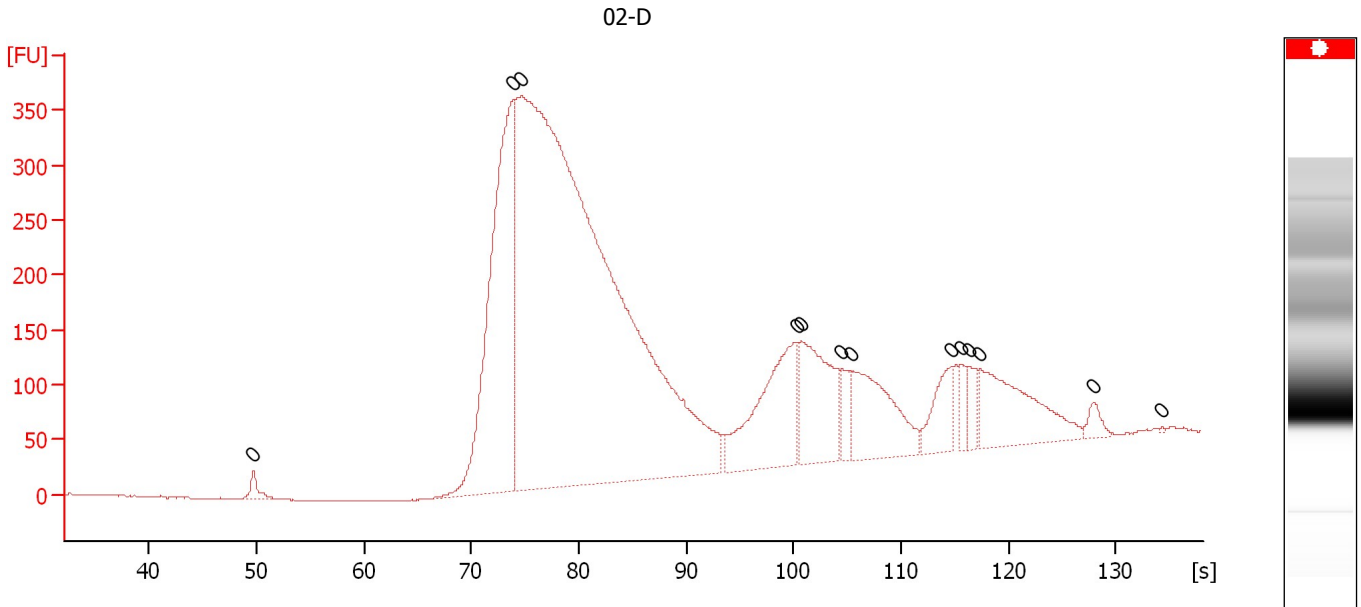
Peak table for sample 9 : 02-C

Peak	Aligned Migration Time [s]	Size [bp]	Conc. [pg/μl]	Molarity [pmol/l]	Observations
1	49.10	0	0.00	0.0	
2	72.50	0	0.00	0.0	
3	78.95	0	0.00	0.0	
4	79.35	0	0.00	0.0	
5	99.90	0	0.00	0.0	
6	100.70	0	0.00	0.0	
7	112.05	0	0.00	0.0	
8	113.25	0	0.00	0.0	
9	126.80	0	0.00	0.0	
10	129.95	0	0.00	0.0	
11	131.90	0	0.00	0.0	
12	132.60	0	0.00	0.0	
13	133.75	0	0.00	0.0	

Assay Class: High Sensitivity DNA Assay
 Data Path: C:\...ents and Settings\Bioanalyzer\2013-12-10\2013-12-10_001.xad

Created: 12/10/2013 9:20:28 AM
 Modified: 12/10/2013 10:01:49 AM

Electropherogram Summary Continued ...



Overall Results for sample 10 : 02-D

Number of peaks found: 0 Noise: 0.4

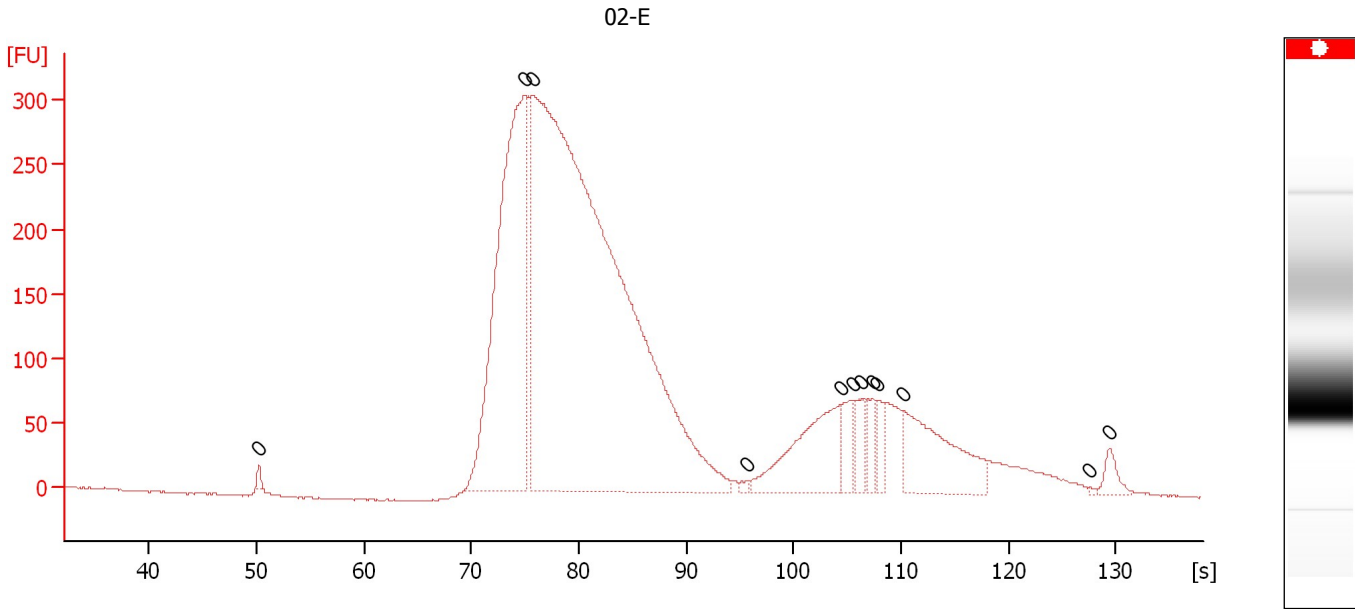
Peak table for sample 10 : 02-D

Peak	Aligned Migration Time [s]	Size [bp]	Conc. [pg/μl]	Molarity [pmol/l]	Observations
1	49.70	0	0.00	0.0	
2	73.90	0	0.00	0.0	
3	74.60	0	0.00	0.0	
4	100.25	0	0.00	0.0	
5	100.70	0	0.00	0.0	
6	104.50	0	0.00	0.0	
7	105.35	0	0.00	0.0	
8	114.70	0	0.00	0.0	
9	115.55	0	0.00	0.0	
10	116.35	0	0.00	0.0	
11	117.30	0	0.00	0.0	
12	127.95	0	0.00	0.0	
13	134.30	0	0.00	0.0	

Assay Class: High Sensitivity DNA Assay
Data Path: C:\...ents and Settings\Bioanalyzer\2013-12-10\2013-12-10_001.xad

Created: 12/10/2013 9:20:28 AM
Modified: 12/10/2013 10:01:49 AM

Electropherogram Summary Continued ...



Overall Results for sample 11 : 02-E

Number of peaks found: 0 Noise: 0.7

Peak table for sample 11 : 02-E

Peak	Aligned Migration Time [s]	Size [bp]	Conc. [pg/μl]	Molarity [pmol/l]	Observations
1	50.20	0	0.00	0.0	
2	74.95	0	0.00	0.0	
3	75.65	0	0.00	0.0	
4	95.70	0	0.00	0.0	
5	104.35	0	0.00	0.0	
6	105.50	0	0.00	0.0	
7	106.30	0	0.00	0.0	
8	107.30	0	0.00	0.0	
9	107.85	0	0.00	0.0	
10	110.25	0	0.00	0.0	
11	127.60	0	0.00	0.0	
12	129.40	0	0.00	0.0	

Assay Class: High Sensitivity DNA Assay
Data Path: C:\...ents and Settings\Bioanalyzer\2013-12-10\2013-12-10_001.xad

Created: 12/10/2013 9:20:28 AM
Modified: 12/10/2013 10:01:49 AM

Gel Image

