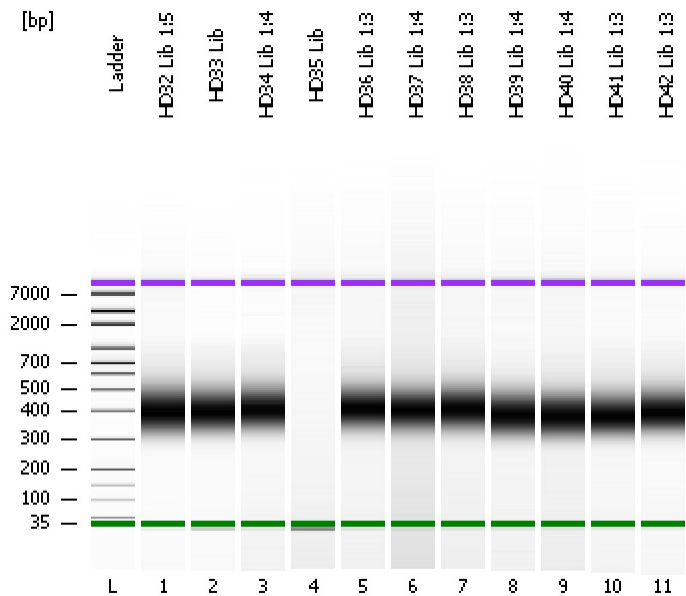


Assay Class: High Sensitivity DNA Assay
Data Path: C:\...ents and Settings\Bioanalyzer\2014-01-07\2014-01-07_002.xad

Created: 1/7/2014 5:21:47 PM
Modified: 1/7/2014 6:10:12 PM

Electrophoresis File Run Summary



Instrument Information:

Instrument Name: DE13701086 Firmware: C.01.069
Serial#: DE13701086 Type: G2938B

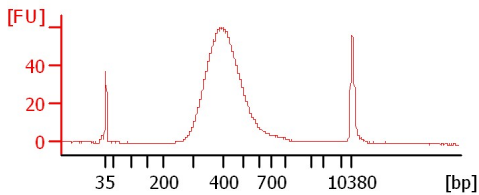
Assay Information:

Assay Origin Path: C:\Program Files\Agilent\2100 bioanalyzer\2100 expert\assays\dsDNA\High Sensitivity DNA.xsy
Assay Class: High Sensitivity DNA Assay
Version: 1.03
Assay Comments: Copyright © 2003-2010 Agilent Technologies

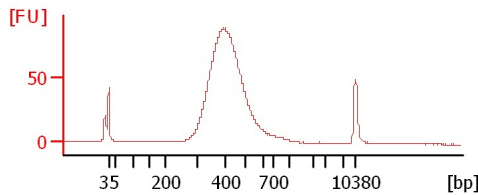
Chip Information:

Chip Lot #: Reagent Kit Lot #: Chip Comments:

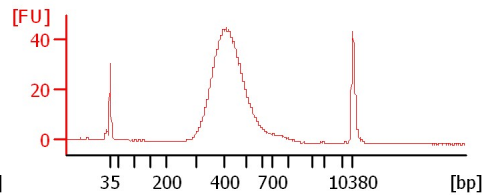
HD32 Lib 1:5



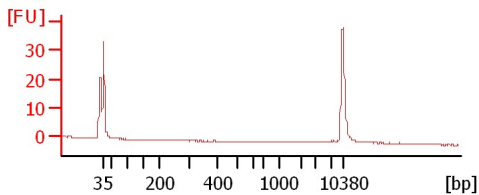
HD33 Lib



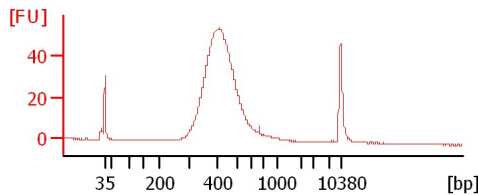
HD34 Lib 1:4



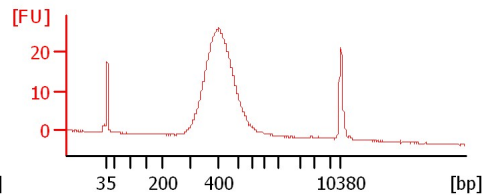
HD35 Lib



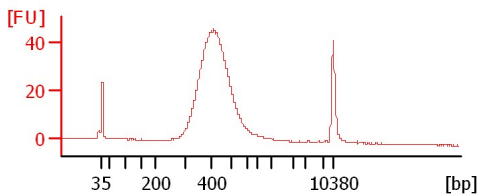
HD36 Lib 1:3



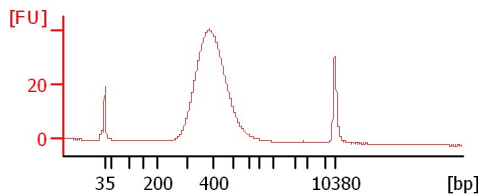
HD37 Lib 1:4



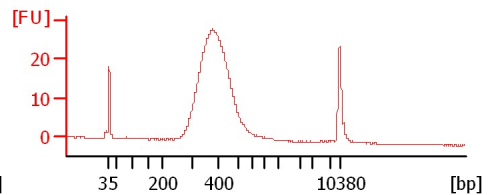
HD38 Lib 1:3



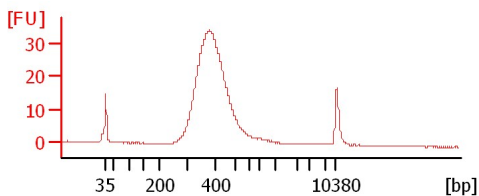
HD39 Lib 1:4



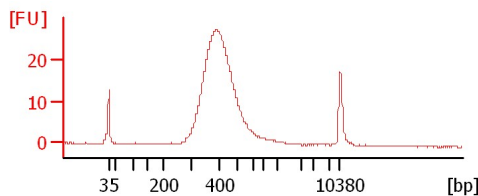
HD40 Lib 1:4



HD41 Lib 1:3



HD42 Lib 1:3



Assay Class: High Sensitivity DNA Assay
 Data Path: C:\...ents and Settings\Bioanalyzer\2014-01-07\2014-01-07_002.xad

Created: 1/7/2014 5:21:47 PM
 Modified: 1/7/2014 6:10:12 PM

Electrophoresis File Run Summary (Chip Summary)

Sample Name	Sample Comment	Rest. Digest	Status	Observation	Result Label	Result Color
HD32 Lib 1:5		<input type="checkbox"/>	✓			
HD33 Lib		<input type="checkbox"/>	✓			
HD34 Lib 1:4		<input type="checkbox"/>	✓			
HD35 Lib		<input type="checkbox"/>	✓			
HD36 Lib 1:3		<input type="checkbox"/>	✓			
HD37 Lib 1:4		<input type="checkbox"/>	✓			
HD38 Lib 1:3		<input type="checkbox"/>	✓			
HD39 Lib 1:4		<input type="checkbox"/>	✓			
HD40 Lib 1:4		<input type="checkbox"/>	✓			
HD41 Lib 1:3		<input type="checkbox"/>	✓			
HD42 Lib 1:3		<input type="checkbox"/>	✓			
Ladder		<input type="checkbox"/>	✓			

Chip Lot #

Reagent Kit Lot #

Chip Comments :

Assay Class: High Sensitivity DNA Assay
Data Path: C:\...ents and Settings\Bioanalyzer\2014-01-07\2014-01-07_002.xad

Created: 1/7/2014 5:21:47 PM
Modified: 1/7/2014 6:10:12 PM

Electrophoresis Assay Details

General Analysis Settings

Number of Available Sample and Ladder Wells (Max.) : 12
Minimum Visible Range [s] : 32
Maximum Visible Range [s] : 138
Start Analysis Time Range [s] : 33
End Analysis Time Range [s] : 137.5
Ladder Concentration [pg/μl] : 1950
Uses Standard Area for Ladder Fragments
Lower Marker Concentration [pg/μl] : 125
Upper Marker Concentration [pg/μl] : 75
Used Upper Marker for Quantitation
Standard Curve Fit is Point to Point
Show Data Aligned to Lower and Upper Marker

Integrator Settings

Integration Start Time [s] : 33.05
Integration End Time [s] : 137
Slope Threshold : 0.8
Height Threshold [FU] : 5
Area Threshold : 0.1
Width Threshold [s] : 0.6
Baseline Plateau [s] : 0.5

Filter Settings

Filter Width [s] : 0.5
Polynomial Order : 4

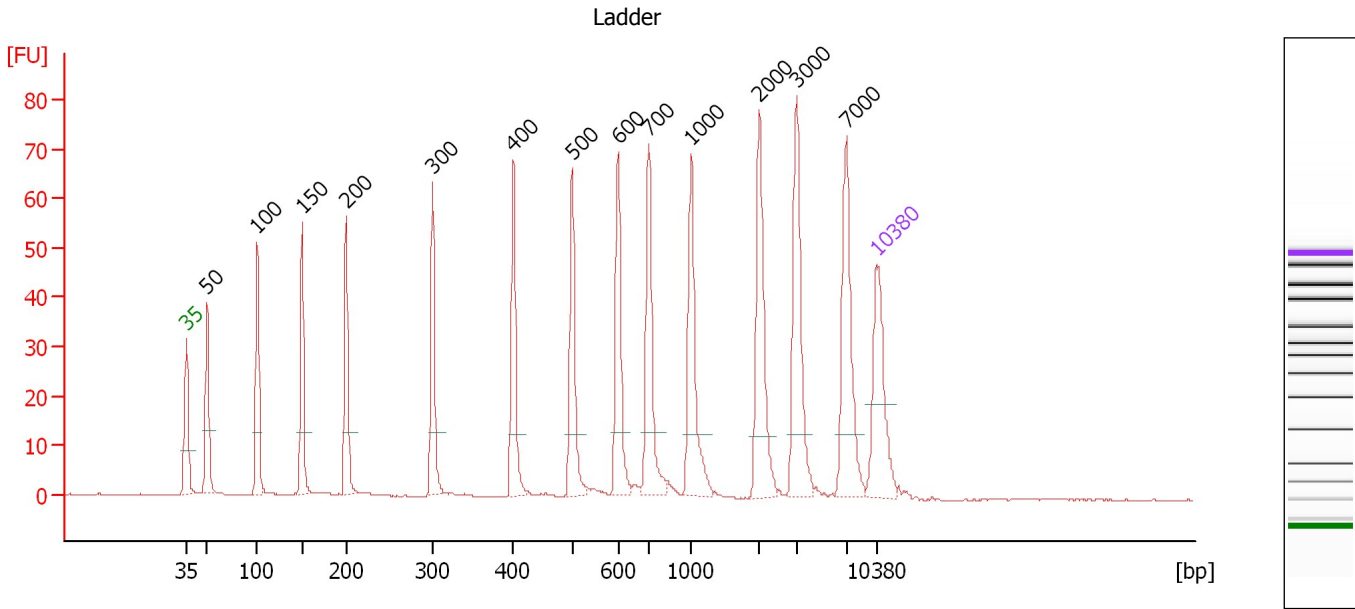
Ladder

Ladder Peak	Size	Area
1	35	160
2	50	210
3	100	208
4	150	221
5	200	242
6	300	270
7	400	305
8	500	306
9	600	336
10	700	321
11	1000	366
12	2000	413
13	3000	411
14	7000	400
15	10380	214

Assay Class: High Sensitivity DNA Assay
 Data Path: C:\...ents and Settings\Bioanalyzer\2014-01-07\2014-01-07_002.xad

Created: 1/7/2014 5:21:47 PM
 Modified: 1/7/2014 6:10:12 PM

Electropherogram Summary



Overall Results for Ladder

Noise: 0.1

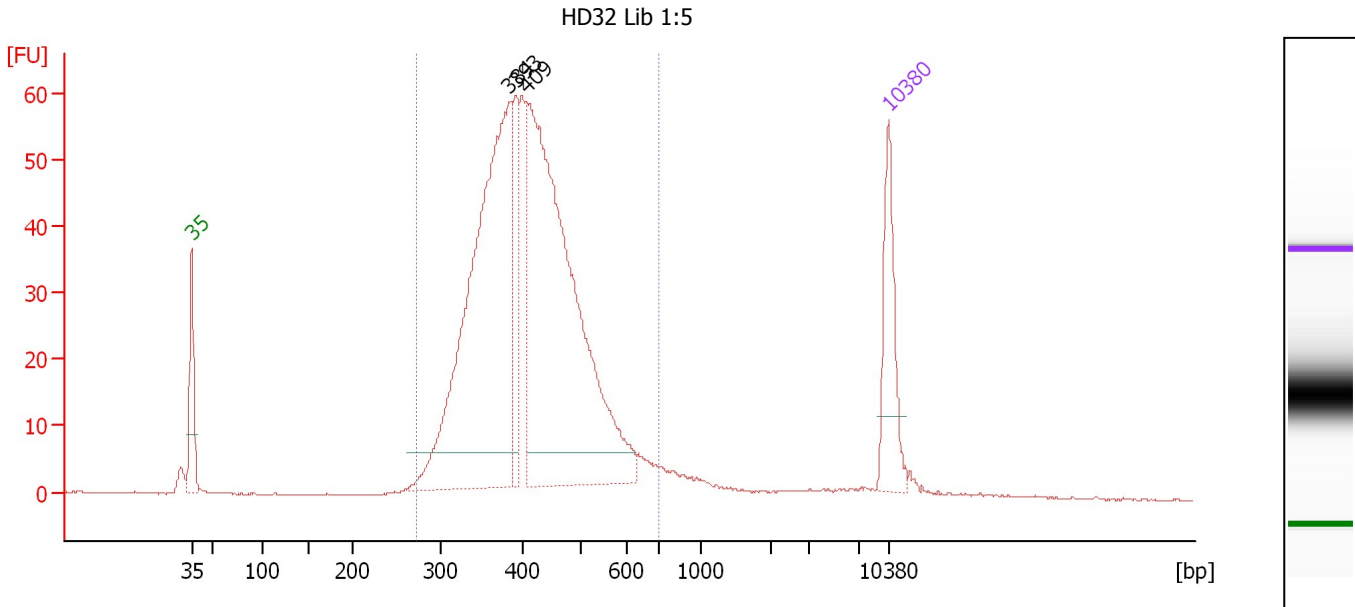
Peak table for Ladder

Peak	Aligned Migration Time [s]	Size [bp]	Conc. [pg/μl]	Molarity [pmol/l]	Observations
1	43.00	35	125.00	5,411.3	Lower Marker
2	45.11	50	150.00	4,545.5	Ladder Peak
3	50.19	100	150.00	2,272.7	Ladder Peak
4	54.74	150	150.00	1,515.2	Ladder Peak
5	59.23	200	150.00	1,136.4	Ladder Peak
6	67.99	300	150.00	757.6	Ladder Peak
7	76.16	400	150.00	568.2	Ladder Peak
8	82.11	500	150.00	454.5	Ladder Peak
9	86.76	600	150.00	378.8	Ladder Peak
10	89.90	700	150.00	324.7	Ladder Peak
11	94.23	1,000	150.00	227.3	Ladder Peak
12	101.10	2,000	150.00	113.6	Ladder Peak
13	104.89	3,000	150.00	75.8	Ladder Peak
14	109.97	7,000	150.00	32.5	Ladder Peak
15	113.00	10,380	75.00	10.9	Upper Marker

Assay Class: High Sensitivity DNA Assay
 Data Path: C:\...ents and Settings\Bioanalyzer\2014-01-07\2014-01-07_002.xad

Created: 1/7/2014 5:21:47 PM
 Modified: 1/7/2014 6:10:12 PM

Electropherogram Summary Continued ...



Overall Results for sample 1 : HD32 Lib 1:5

Number of peaks found: 3 Corr. Area 1: 869.0
 Noise: 0.1

Peak table for sample 1 : HD32 Lib 1:5

Peak	Aligned Migration Time [s]	Size [bp]	Conc. [pg/μl]	Molarity [pmol/l]	Observations
1	43.00	35	125.00	5,411.3	Lower Marker
2	74.81	384	606.17	2,394.8	
3	75.56	393	90.60	349.6	
4	76.69	409	666.43	2,469.7	
5	113.00	10,380	75.00	10.9	Upper Marker

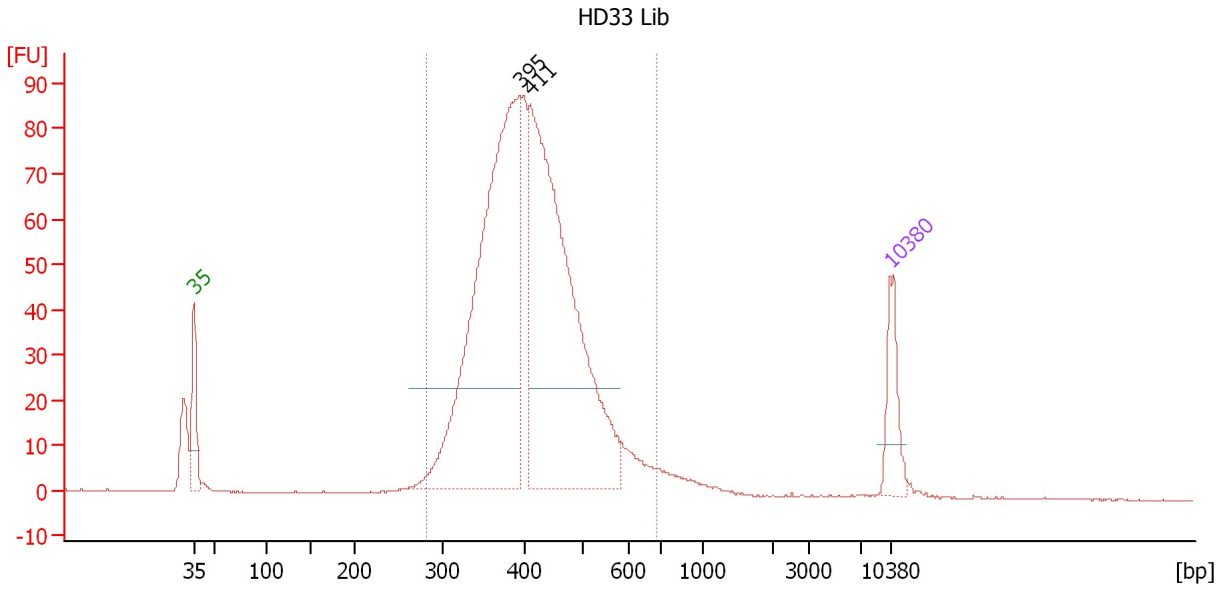
Region table for sample 1 : HD32 Lib 1:5

From [bp]	To [bp]	Average Size [bp]	Molarity [pmol/l]	Conc. [pg/μl]	Corr. Area	% of Total	Size distribution in CV [%]	Color
273	702	418	5,871.3	1,560.19	869.0	94	17.9	Blue

Assay Class: High Sensitivity DNA Assay
 Data Path: C:\...ents and Settings\Bioanalyzer\2014-01-07\2014-01-07_002.xad

Created: 1/7/2014 5:21:47 PM
 Modified: 1/7/2014 6:10:12 PM

Electropherogram Summary Continued ...



Setpoint Deviations for sample 2 : HD33 Lib

Height Threshold [FU] : 22

Overall Results for sample 2 : HD33 Lib

Number of peaks found: 2 Corr. Area 1: 1,179.5
 Noise: 0.1

Peak table for sample 2 : HD33 Lib

Peak	Aligned Migration Time [s]	Size [bp]	Conc. [pg/μl]	Molarity [pmol/l]	Observations
1	43.00	35	125.00	5,411.3	Lower Marker
2	75.75	395	1,083.49	4,156.5	
3	76.82	411	1,024.92	3,777.5	
4	113.00	10,380	75.00	10.9	Upper Marker

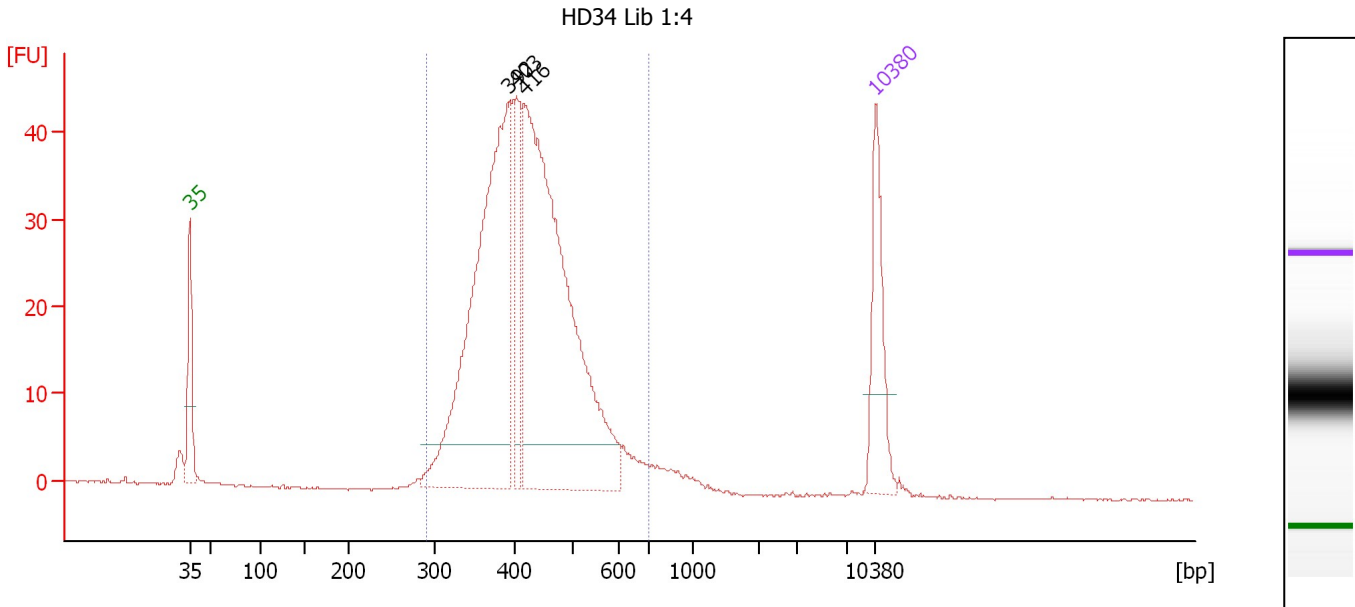
Region table for sample 2 : HD33 Lib

From [bp]	To [bp]	Average Size [bp]	Molarity [pmol/l]	Conc. [pg/μl]	Corr. Area	% of Total	Size distribution in CV [%]	Color
281	685	417	9,069.5	2,415.99	1,179.5	93	16.7	Blue

Assay Class: High Sensitivity DNA Assay
 Data Path: C:\...ents and Settings\Bioanalyzer\2014-01-07\2014-01-07_002.xad

Created: 1/7/2014 5:21:47 PM
 Modified: 1/7/2014 6:10:12 PM

Electropherogram Summary Continued ...



Overall Results for sample 3 : HD34 Lib 1:4

Number of peaks found: 3 Corr. Area 1: 577.7
 Noise: 0.1

Peak table for sample 3 : HD34 Lib 1:4

Peak	Aligned Migration Time [s]	Size [bp]	Conc. [pg/μl]	Molarity [pmol/l]	Observations
1	43.00	35	125.00	5,411.3	Lower Marker
2	75.47	392	506.86	1,961.4	
3	76.34	403	87.00	327.1	
4	77.10	416	615.17	2,241.5	
5	113.00	10,380	75.00	10.9	Upper Marker

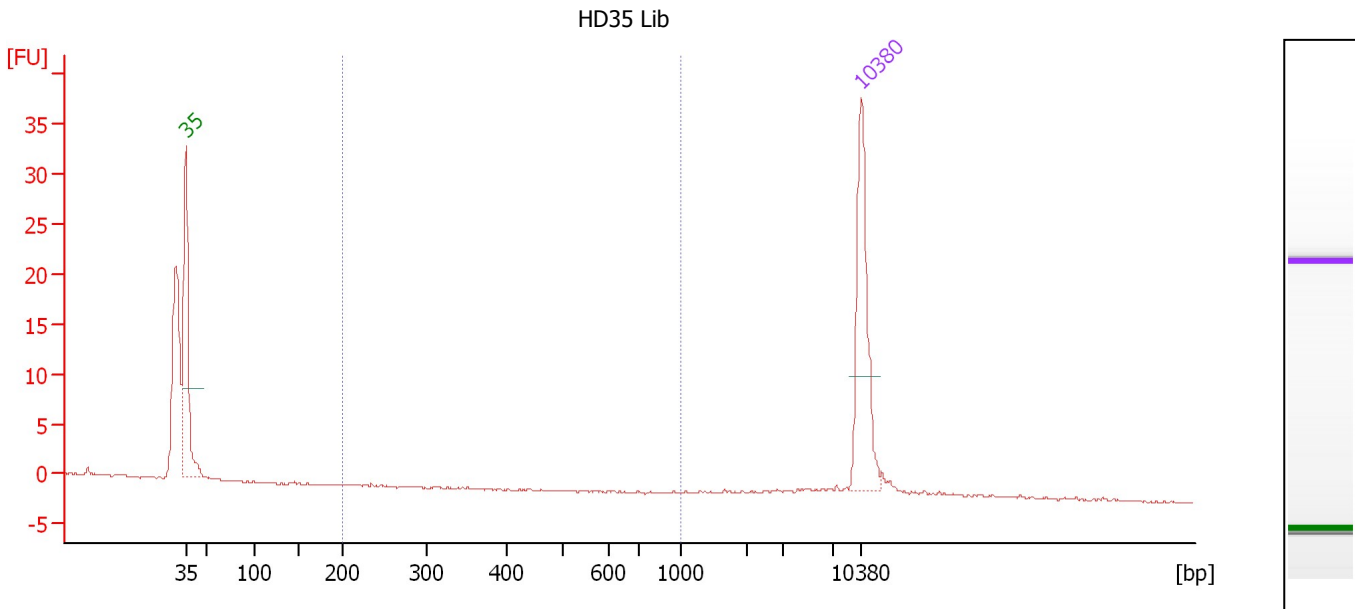
Region table for sample 3 : HD34 Lib 1:4

From [bp]	To [bp]	Average Size [bp]	Molarity [pmol/l]	Conc. [pg/μl]	Corr. Area	% of Total	Size distribution in CV [%]	Color
290	695	426	4,803.2	1,309.74	577.7	96	16.5	Blue

Assay Class: High Sensitivity DNA Assay
 Data Path: C:\...ents and Settings\Bioanalyzer\2014-01-07\2014-01-07_002.xad

Created: 1/7/2014 5:21:47 PM
 Modified: 1/7/2014 6:10:12 PM

Electropherogram Summary Continued ...



Setpoint Deviations for sample 4 : HD35 Lib

Height Threshold [FU] : 25

Overall Results for sample 4 : HD35 Lib

Number of peaks found: 0 Corr. Area 1: 0.0
 Noise: 0.1

Peak table for sample 4 : HD35 Lib

Peak	Aligned Migration Time [s]	Size [bp]	Conc. [pg/μl]	Molarity [pmol/l]	Observations
1	43.00	35	125.00	5,411.3	Lower Marker
2	113.00	10,380	75.00	10.9	Upper Marker

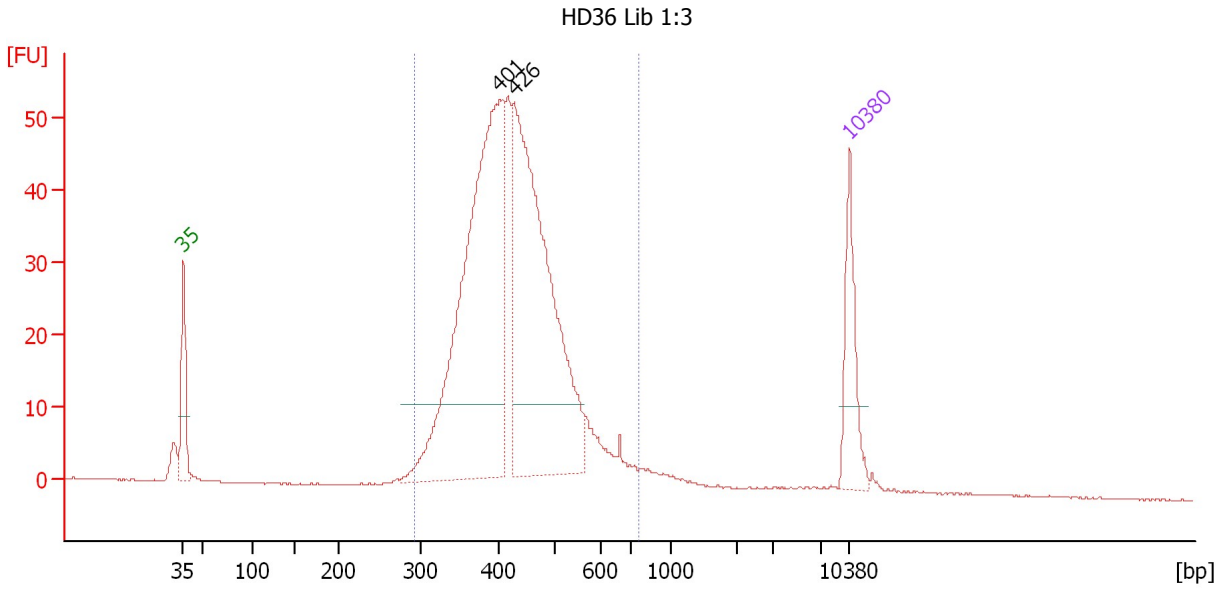
Region table for sample 4 : HD35 Lib

From [bp]	To [bp]	Average Size [bp]	Molarity [pmol/l]	Conc. [pg/μl]	Corr. Area	% of Total	Size distribution in CV [%]	Color
200	1,000	0	0.0	0.00	0.0	0	0.0	Blue

Assay Class: High Sensitivity DNA Assay
 Data Path: C:\...ents and Settings\Bioanalyzer\2014-01-07\2014-01-07_002.xad

Created: 1/7/2014 5:21:47 PM
 Modified: 1/7/2014 6:10:12 PM

Electropherogram Summary Continued ...



Setpoint Deviations for sample 5 : HD36 Lib 1:3

Height Threshold [FU] : 10

Overall Results for sample 5 : HD36 Lib 1:3

Number of peaks found: 2 Corr. Area 1: 688.0
 Noise: 0.1

Peak table for sample 5 : HD36 Lib 1:3

Peak	Aligned Migration Time [s]	Size [bp]	Conc. [pg/μl]	Molarity [pmol/l]	Observations
1	43.00	35	125.00	5,411.3	Lower Marker
2	76.21	401	713.24	2,696.3	
3	77.72	426	607.17	2,158.5	
4	113.00	10,380	75.00	10.9	Upper Marker

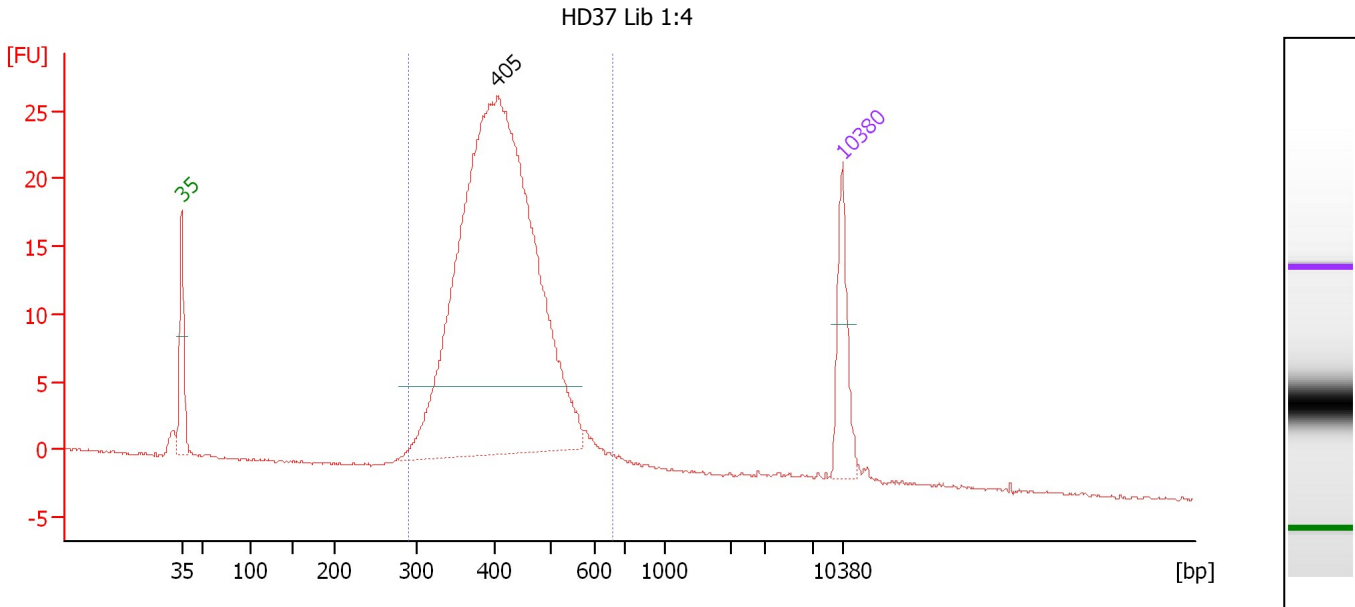
Region table for sample 5 : HD36 Lib 1:3

From [bp]	To [bp]	Average Size [bp]	Molarity [pmol/l]	Conc. [pg/μl]	Corr. Area	% of Total	Size distribution in CV [%]	Color
293	764	430	5,754.3	1,581.63	688.0	94	17.1	Blue

Assay Class: High Sensitivity DNA Assay
 Data Path: C:\...ents and Settings\Bioanalyzer\2014-01-07\2014-01-07_002.xad

Created: 1/7/2014 5:21:47 PM
 Modified: 1/7/2014 6:10:12 PM

Electropherogram Summary Continued ...



Overall Results for sample 6 : HD37 Lib 1:4

Number of peaks found: 1 Corr. Area 1: 335.3
 Noise: 0.1

Peak table for sample 6 : HD37 Lib 1:4

Peak	Aligned Migration Time [s]	Size [bp]	Conc. [pg/μl]	Molarity [pmol/l]	Observations
1	43.00	35	125.00	5,411.3	Lower Marker
2	76.45	405	1,347.40	5,043.3	
3	113.00	10,380	75.00	10.9	Upper Marker

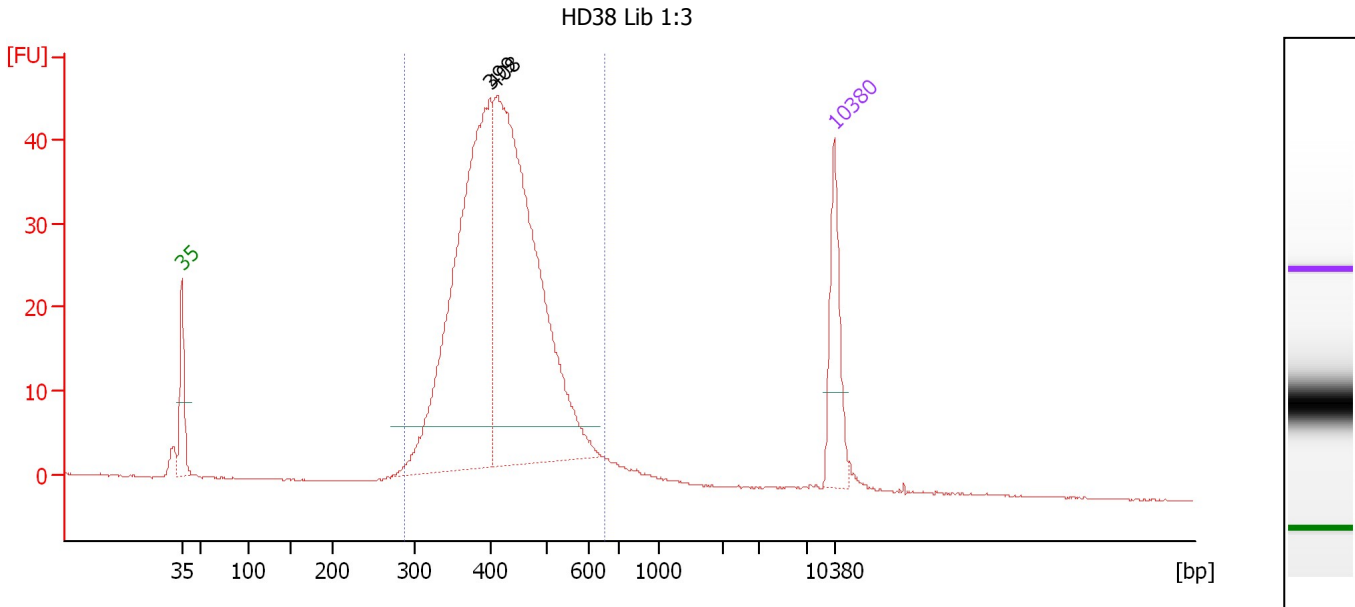
Region table for sample 6 : HD37 Lib 1:4

From [bp]	To [bp]	Average Size [bp]	Molarity [pmol/l]	Conc. [pg/μl]	Corr. Area	% of Total	Size distribution in CV [%]	Color
289	663	418	5,590.6	1,502.74	335.3	94	15.2	Blue

Assay Class: High Sensitivity DNA Assay
 Data Path: C:\...ents and Settings\Bioanalyzer\2014-01-07\2014-01-07_002.xad

Created: 1/7/2014 5:21:47 PM
 Modified: 1/7/2014 6:10:12 PM

Electropherogram Summary Continued ...



Overall Results for sample 7 : HD38 Lib 1:3

Number of peaks found: 2 Corr. Area 1: 588.5
 Noise: 0.1

Peak table for sample 7 : HD38 Lib 1:3

Peak	Aligned Migration Time [s]	Size [bp]	Conc. [pg/μl]	Molarity [pmol/l]	Observations
1	43.00	35	125.00	5,411.3	Lower Marker
2	76.11	399	619.22	2,349.0	
3	76.63	408	716.11	2,660.4	
4	113.00	10,380	75.00	10.9	Upper Marker

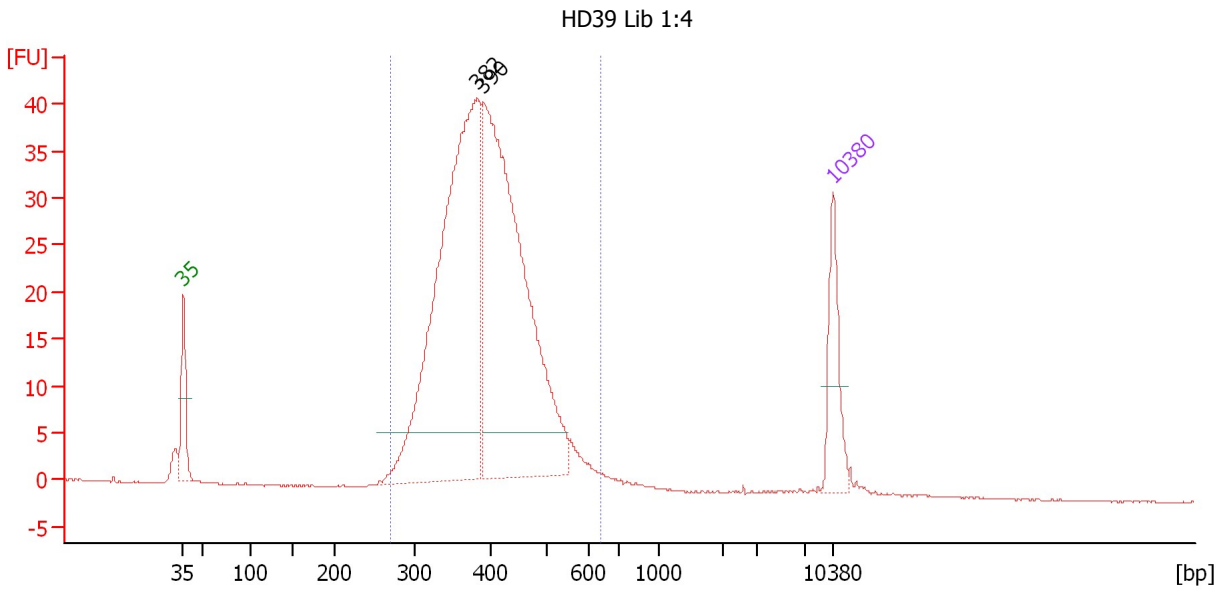
Region table for sample 7 : HD38 Lib 1:3

From [bp]	To [bp]	Average Size [bp]	Molarity [pmol/l]	Conc. [pg/μl]	Corr. Area	% of Total	Size distribution in CV [%]	Color
287	651	423	5,477.2	1,486.86	588.5	94	15.6	Blue

Assay Class: High Sensitivity DNA Assay
 Data Path: C:\...ents and Settings\Bioanalyzer\2014-01-07\2014-01-07_002.xad

Created: 1/7/2014 5:21:47 PM
 Modified: 1/7/2014 6:10:12 PM

Electropherogram Summary Continued ...



Overall Results for sample 8 : HD39 Lib 1:4

Number of peaks found: 2 Corr. Area 1: 542.2
 Noise: 0.1

Peak table for sample 8 : HD39 Lib 1:4

Peak	Aligned Migration Time [s]	Size [bp]	Conc. [pg/μl]	Molarity [pmol/l]	Observations
1	43.00	35	125.00	5,411.3	Lower Marker
2	74.67	382	827.79	3,285.8	
3	75.36	390	787.78	3,059.3	
4	113.00	10,380	75.00	10.9	Upper Marker

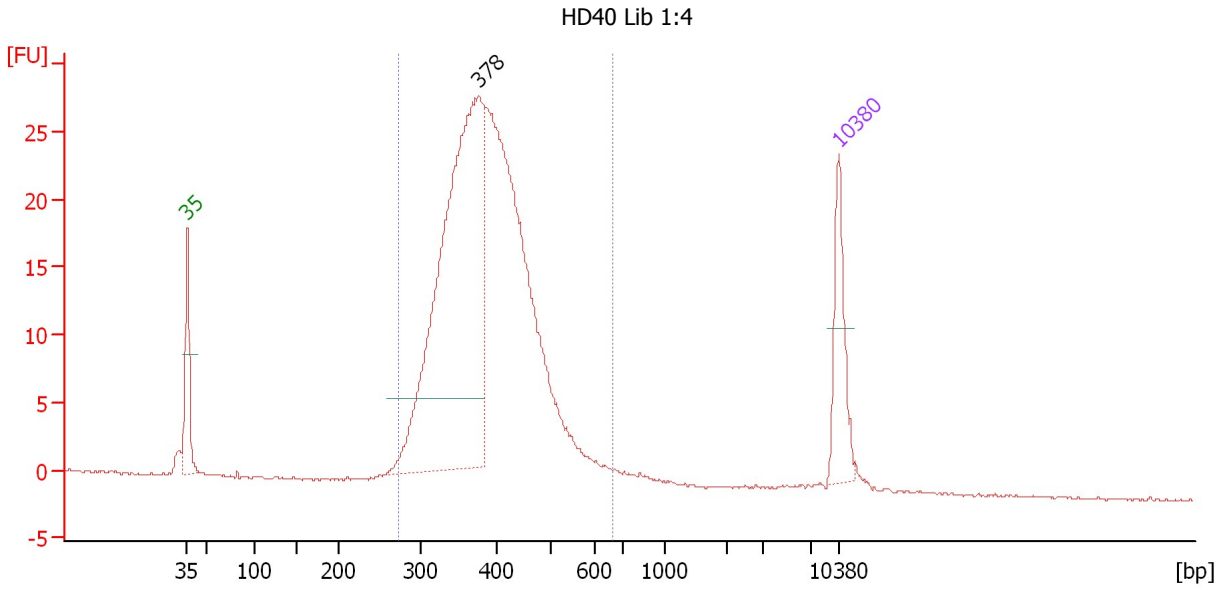
Region table for sample 8 : HD39 Lib 1:4

From [bp]	To [bp]	Average Size [bp]	Molarity [pmol/l]	Conc. [pg/μl]	Corr. Area	% of Total	Size distribution in CV [%]	Color
270	637	400	6,845.0	1,753.59	542.2	96	15.8	Blue

Assay Class: High Sensitivity DNA Assay
 Data Path: C:\...ents and Settings\Bioanalyzer\2014-01-07\2014-01-07_002.xad

Created: 1/7/2014 5:21:47 PM
 Modified: 1/7/2014 6:10:12 PM

Electropherogram Summary Continued ...



Overall Results for sample 9 : HD40 Lib 1:4

Number of peaks found: 1 Corr. Area 1: 372.0
 Noise: 0.1

Peak table for sample 9 : HD40 Lib 1:4

Peak	Aligned Migration Time [s]	Size [bp]	Conc. [pg/μl]	Molarity [pmol/l]	Observations
1	43.00	35	125.00	5,411.3	Lower Marker
2	74.33	378	770.74	3,092.4	
3	113.00	10,380	75.00	10.9	Upper Marker

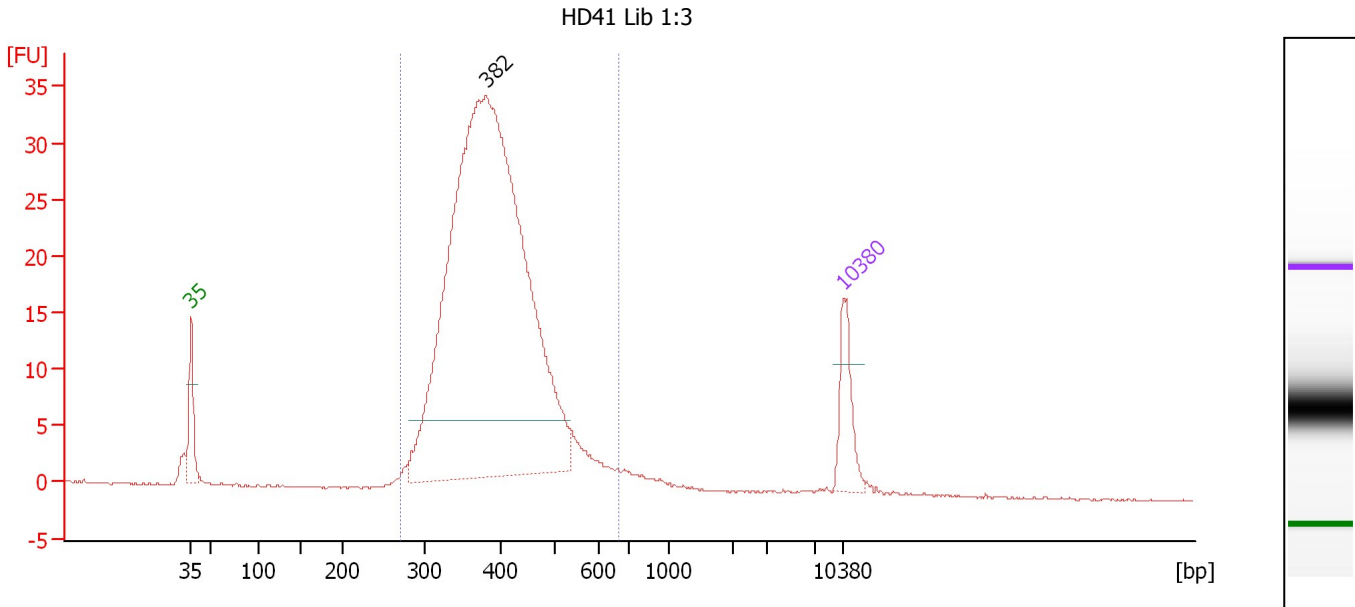
Region table for sample 9 : HD40 Lib 1:4

From [bp]	To [bp]	Average Size [bp]	Molarity [pmol/l]	Conc. [pg/μl]	Corr. Area	% of Total	Size distribution in CV [%]	Color
273	665	396	6,318.2	1,602.48	372.0	96	16.1	Blue

Assay Class: High Sensitivity DNA Assay
 Data Path: C:\...ents and Settings\Bioanalyzer\2014-01-07\2014-01-07_002.xad

Created: 1/7/2014 5:21:47 PM
 Modified: 1/7/2014 6:10:12 PM

Electropherogram Summary Continued ...



Overall Results for sample 10 : HD41 Lib 1:3

Number of peaks found: 1 Corr. Area 1: 434.8
 Noise: 0.1

Peak table for sample 10 : HD41 Lib 1:3

Peak	Aligned Migration Time [s]	Size [bp]	Conc. [pg/μl]	Molarity [pmol/l]	Observations
1	43.00	35	125.00	5,411.3	Lower Marker
2	74.65	382	2,019.63	8,020.6	
3	113.00	10,380	75.00	10.9	Upper Marker

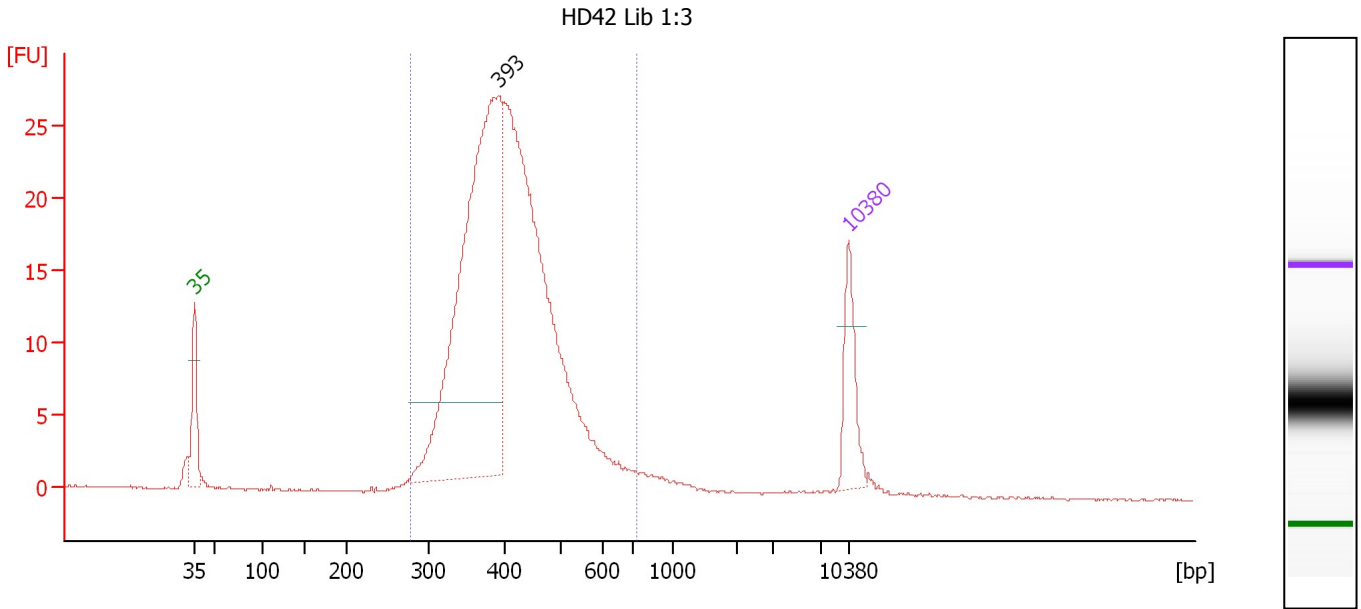
Region table for sample 10 : HD41 Lib 1:3

From [bp]	To [bp]	Average Size [bp]	Molarity [pmol/l]	Conc. [pg/μl]	Corr. Area	% of Total	Size distribution in CV [%]	Color
270	664	398	8,830.6	2,253.20	434.8	95	16.4	Blue

Assay Class: High Sensitivity DNA Assay
 Data Path: C:\...ents and Settings\Bioanalyzer\2014-01-07\2014-01-07_002.xad

Created: 1/7/2014 5:21:47 PM
 Modified: 1/7/2014 6:10:12 PM

Electropherogram Summary Continued ...



Overall Results for sample 11 : HD42 Lib 1:3

Number of peaks found: 1 Corr. Area 1: 345.3
 Noise: 0.1

Peak table for sample 11 : HD42 Lib 1:3

Peak	Aligned Migration Time [s]	Size [bp]	Conc. [pg/μl]	Molarity [pmol/l]	Observations
1	43.00	35	125.00	5,411.3	Lower Marker
2	75.58	393	895.44	3,453.7	
3	113.00	10,380	75.00	10.9	Upper Marker

Region table for sample 11 : HD42 Lib 1:3

From [bp]	To [bp]	Average Size [bp]	Molarity [pmol/l]	Conc. [pg/μl]	Corr. Area	% of Total	Size distribution in CV [%]	Color
279	735	416	7,420.8	1,970.83	345.3	95	17.2	Blue

Assay Class: High Sensitivity DNA Assay
Data Path: C:\...ents and Settings\Bioanalyzer\2014-01-07\2014-01-07_002.xad

Created: 1/7/2014 5:21:47 PM
Modified: 1/7/2014 6:10:12 PM

Gel Image

