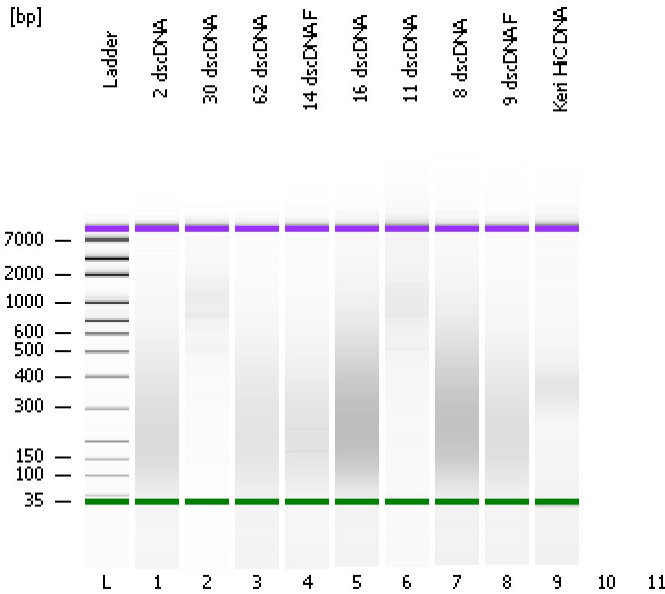


Assay Class: High Sensitivity DNA Assay  
Data Path: C:\...ents and Settings\Bioanalyzer\2014-01-13\2014-01-13\_001.xad

Created: 1/13/2014 9:23:59 AM  
Modified: 1/13/2014 10:03:48 AM

**Electrophoresis File Run Summary**



Instrument Information:

Instrument Name: DE13701086      Firmware: C.01.069  
Serial#: DE13701086      Type: G2938B

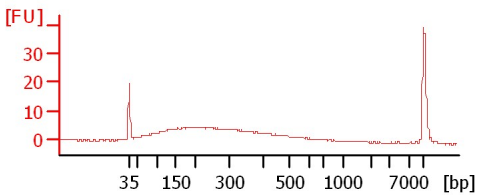
Assay Information:

Assay Origin Path: C:\Program Files\Agilent\2100 bioanalyzer\2100 expert\assays\dsDNA\High Sensitivity DNA.xsy  
Assay Class: High Sensitivity DNA Assay  
Version: 1.03  
Assay Comments: Copyright © 2003-2010 Agilent Technologies

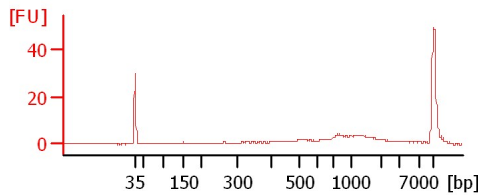
Chip Information:

Chip Lot #:      Reagent Kit Lot #:      Chip Comments:

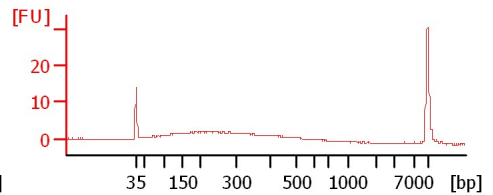
**2 dscDNA**



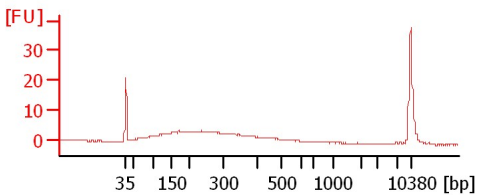
**30 dscDNA**



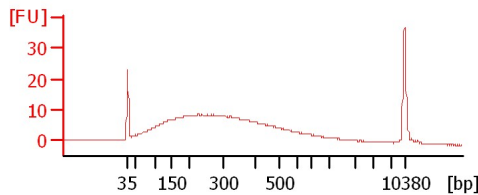
**62 dscDNA**



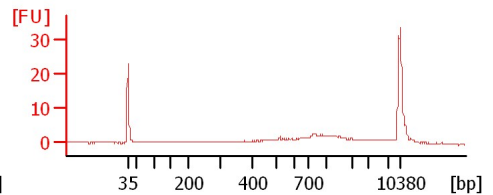
**14 dscDNA F**



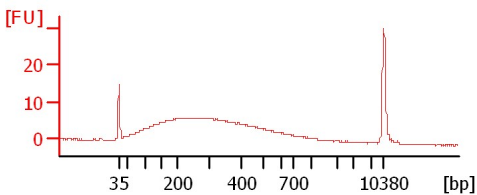
**16 dscDNA**



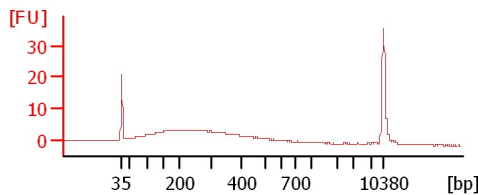
**11 dscDNA**



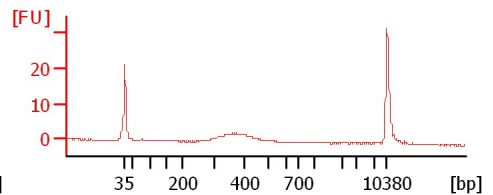
**8 dscDNA**



**9 dscDNA F**



**Keri HiC DNA**



Assay Class: High Sensitivity DNA Assay  
 Data Path: C:\...ents and Settings\Bioanalyzer\2014-01-13\2014-01-13\_001.xad

Created: 1/13/2014 9:23:59 AM  
 Modified: 1/13/2014 10:03:48 AM

**Electrophoresis File Run Summary (Chip Summary)**

Sample Name	Sample Comment	Rest. Digest	Status	Observation	Result Label	Result Color
2 dscDNA		<input type="checkbox"/>	✓			
30 dscDNA		<input type="checkbox"/>	✓			
62 dscDNA		<input type="checkbox"/>	✓			
14 dscDNA F		<input type="checkbox"/>	✓			
16 dscDNA		<input type="checkbox"/>	✓			
11 dscDNA		<input type="checkbox"/>	✓			
8 dscDNA		<input type="checkbox"/>	✓			
9 dscDNA F		<input type="checkbox"/>	✓			
Keri HiC DNA		<input type="checkbox"/>	✓			
		<input type="checkbox"/>				
Ladder		<input type="checkbox"/>	✓			

**Chip Lot #**

**Reagent Kit Lot #**

**Chip Comments :**

Assay Class: High Sensitivity DNA Assay  
Data Path: C:\...ents and Settings\Bioanalyzer\2014-01-13\2014-01-13\_001.xad

Created: 1/13/2014 9:23:59 AM  
Modified: 1/13/2014 10:03:48 AM

**Electrophoresis Assay Details**

**General Analysis Settings**

Number of Available Sample and Ladder Wells (Max.) : 12  
Minimum Visible Range [s] : 32  
Maximum Visible Range [s] : 138  
Start Analysis Time Range [s] : 33  
End Analysis Time Range [s] : 137.5  
Ladder Concentration [pg/μl] : 1950  
Uses Standard Area for Ladder Fragments  
Lower Marker Concentration [pg/μl] : 125  
Upper Marker Concentration [pg/μl] : 75  
Used Upper Marker for Quantitation  
Standard Curve Fit is Point to Point  
Show Data Aligned to Lower and Upper Marker

**Integrator Settings**

Integration Start Time [s] : 33.05  
Integration End Time [s] : 137  
Slope Threshold : 0.8  
Height Threshold [FU] : 5  
Area Threshold : 0.1  
Width Threshold [s] : 0.6  
Baseline Plateau [s] : 0.5

**Filter Settings**

Filter Width [s] : 0.5  
Polynomial Order : 4

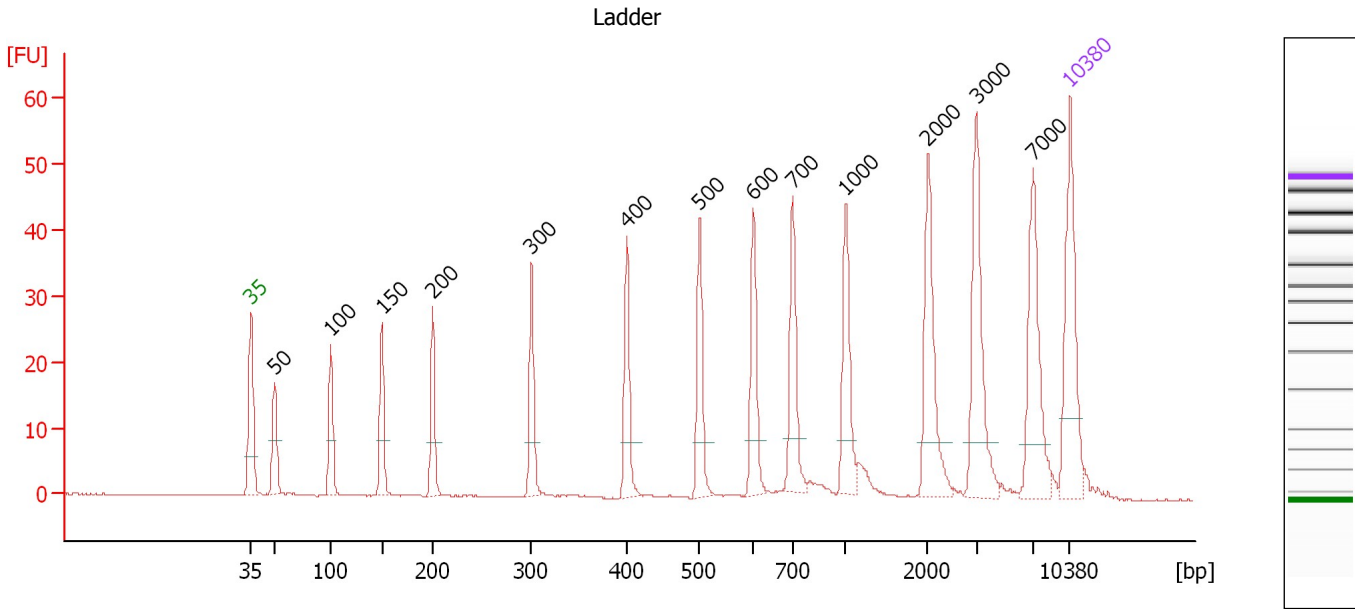
**Ladder**

Ladder Peak	Size	Area
1	35	160
2	50	210
3	100	208
4	150	221
5	200	242
6	300	270
7	400	305
8	500	306
9	600	336
10	700	321
11	1000	366
12	2000	413
13	3000	411
14	7000	400
15	10380	214

Assay Class: High Sensitivity DNA Assay  
 Data Path: C:\...ents and Settings\Bioanalyzer\2014-01-13\2014-01-13\_001.xad

Created: 1/13/2014 9:23:59 AM  
 Modified: 1/13/2014 10:03:48 AM

**Electropherogram Summary**



**Overall Results for Ladder**

Noise: 0.1

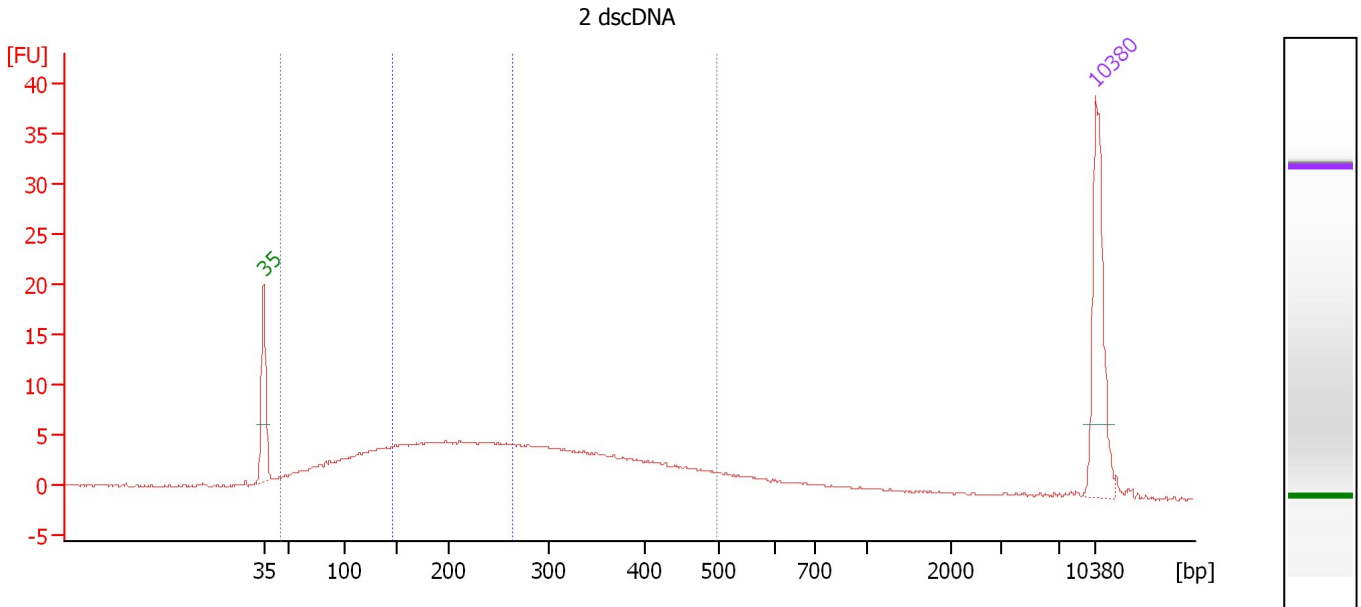
**Peak table for Ladder**

Peak	Aligned Migration Time [s]	Size [bp]	Conc. [pg/μl]	Molarity [pmol/l]	Observations
1	43.00	35	125.00	5,411.3	Lower Marker
2	45.01	50	150.00	4,545.5	Ladder Peak
3	49.84	100	150.00	2,272.7	Ladder Peak
4	54.17	150	150.00	1,515.2	Ladder Peak
5	58.54	200	150.00	1,136.4	Ladder Peak
6	66.97	300	150.00	757.6	Ladder Peak
7	75.13	400	150.00	568.2	Ladder Peak
8	81.33	500	150.00	454.5	Ladder Peak
9	85.93	600	150.00	378.8	Ladder Peak
10	89.30	700	150.00	324.7	Ladder Peak
11	93.81	1,000	150.00	227.3	Ladder Peak
12	100.83	2,000	150.00	113.6	Ladder Peak
13	104.98	3,000	150.00	75.8	Ladder Peak
14	109.86	7,000	150.00	32.5	Ladder Peak
15	113.00	10,380	75.00	10.9	Upper Marker

Assay Class: High Sensitivity DNA Assay  
 Data Path: C:\...ents and Settings\Bioanalyzer\2014-01-13\2014-01-13\_001.xad

Created: 1/13/2014 9:23:59 AM  
 Modified: 1/13/2014 10:03:48 AM

**Electropherogram Summary Continued ...**



**Overall Results for sample 1 : 2 dscDNA**

Number of peaks found: 0                      Corr. Area 1: 207.2  
 Noise: 0.1                                      Corr. Area 2: 77.7

**Peak table for sample 1 : 2 dscDNA**

Peak	Aligned Migration Time [s]	Size [bp]	Conc. [pg/μl]	Molarity [pmol/l]	Observations
1	43.00	35	125.00	5,411.3	Lower Marker
2	113.00	10,380	75.00	10.9	Upper Marker

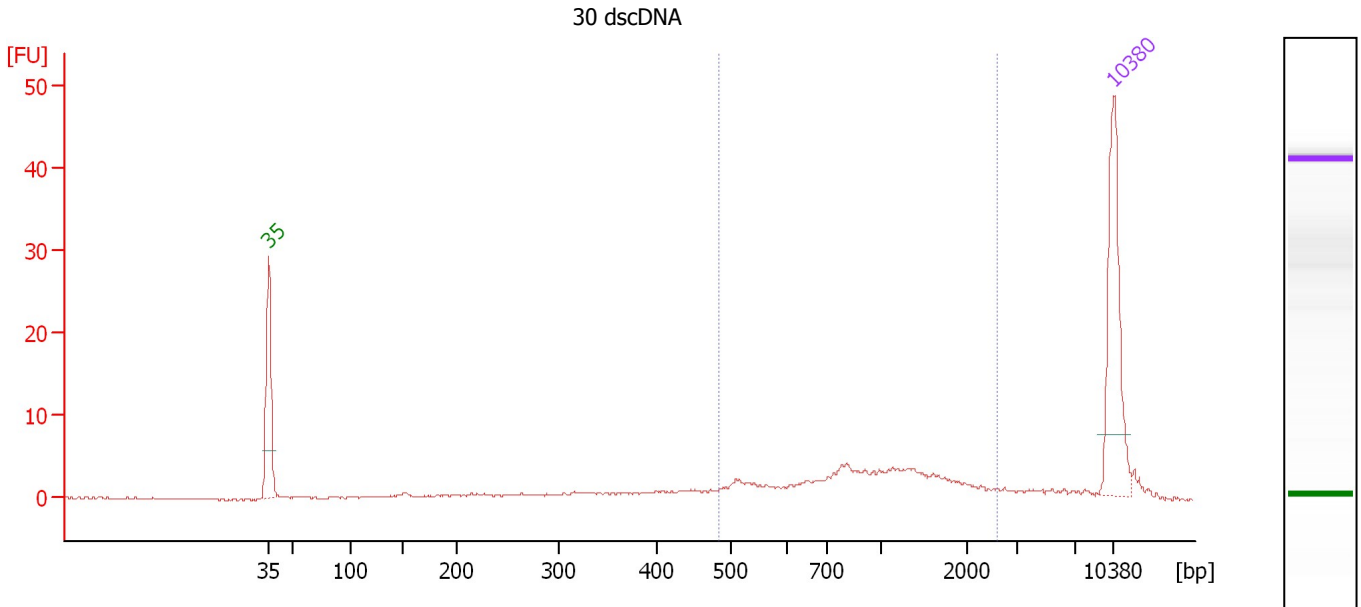
**Region table for sample 1 : 2 dscDNA**

From [bp]	To [bp]	Average Size [bp]	Molarity [pmol/l]	Conc. [pg/μl]	Corr. Area	% of Total	Size distribution in CV [%]	Color
46	497	254	6,623.9	750.79	207.2	87	43.9	Blue
146	265	205	2,216.5	289.79	77.7	32	16.7	Dark Blue

Assay Class: High Sensitivity DNA Assay  
 Data Path: C:\...ents and Settings\Bioanalyzer\2014-01-13\2014-01-13\_001.xad

Created: 1/13/2014 9:23:59 AM  
 Modified: 1/13/2014 10:03:48 AM

**Electropherogram Summary Continued ...**



**Overall Results for sample 2 : 30 dscDNA**

Number of peaks found: 0                      Corr. Area 1: 59.3  
 Noise: 0.1

**Peak table for sample 2 : 30 dscDNA**

Peak	Aligned Migration Time [s]	Size [bp]	Conc. [pg/μl]	Molarity [pmol/l]	Observations
1	43.00	35	125.00	5,411.3	Lower Marker
2	113.00	10,380	75.00	10.9	Upper Marker

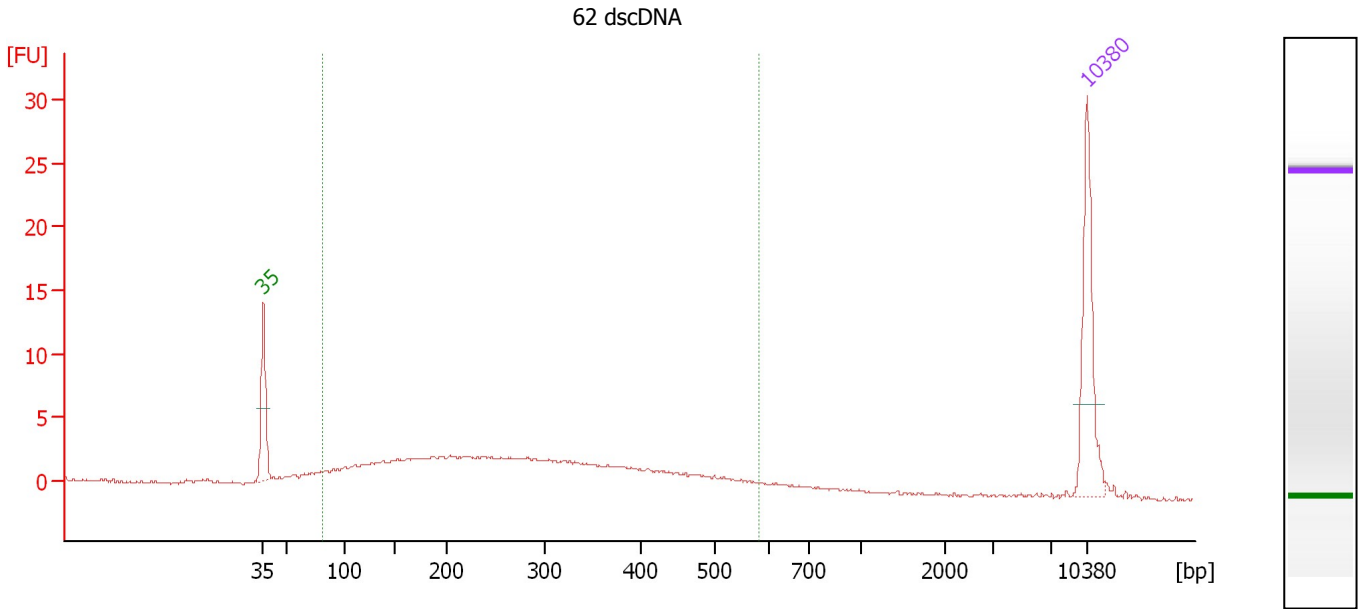
**Region table for sample 2 : 30 dscDNA**

From [bp]	To [bp]	Average Size [bp]	Molarity [pmol/l]	Conc. [pg/μl]	Corr. Area	% of Total	Size distribution in CV [%]	Color
484	2,609	1,090	207.9	117.14	59.3	61	47.0	Blue

Assay Class: High Sensitivity DNA Assay  
 Data Path: C:\...ents and Settings\Bioanalyzer\2014-01-13\2014-01-13\_001.xad

Created: 1/13/2014 9:23:59 AM  
 Modified: 1/13/2014 10:03:48 AM

**Electropherogram Summary Continued ...**



**Overall Results for sample 3 : 62 dscDNA**

Number of peaks found: 0                      Corr. Area 1: 96.5  
 Noise: 0.1

**Peak table for sample 3 : 62 dscDNA**

Peak	Aligned Migration Time [s]	Size [bp]	Conc. [pg/μl]	Molarity [pmol/l]	Observations
1	43.00	35	125.00	5,411.3	Lower Marker
2	113.00	10,380	75.00	10.9	Upper Marker

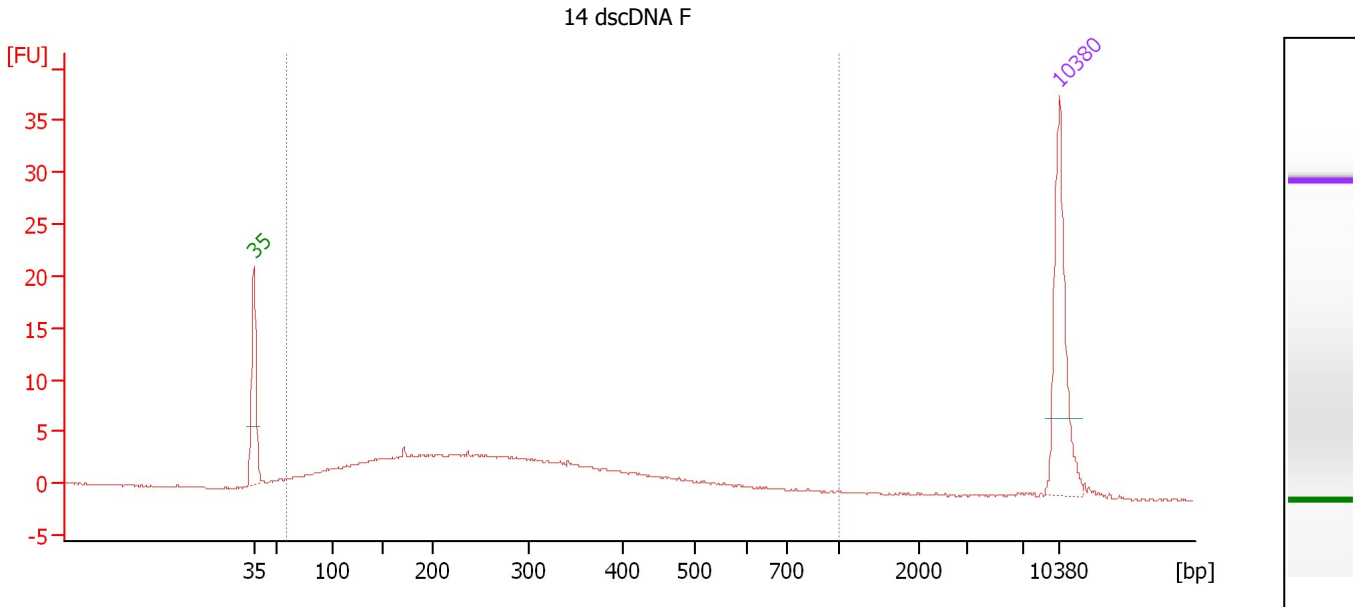
**Region table for sample 3 : 62 dscDNA**

From [bp]	To [bp]	Average Size [bp]	Molarity [pmol/l]	Conc. [pg/μl]	Corr. Area	% of Total	Size distribution in CV [%]	Color
81	581	281	3,604.1	488.62	96.5	89	42.1	Green

Assay Class: High Sensitivity DNA Assay  
 Data Path: C:\...ents and Settings\Bioanalyzer\2014-01-13\2014-01-13\_001.xad

Created: 1/13/2014 9:23:59 AM  
 Modified: 1/13/2014 10:03:48 AM

**Electropherogram Summary Continued ...**



**Overall Results for sample 4 : 14 dscDNA F**

Number of peaks found: 0      Corr. Area 1: 140.5  
 Noise: 0.1

**Peak table for sample 4 : 14 dscDNA F**

Peak	Aligned Migration Time [s]	Size [bp]	Conc. [pg/μl]	Molarity [pmol/l]	Observations
1	43.00	35	125.00	5,411.3	Lower Marker
2	113.00	10,380	75.00	10.9	Upper Marker

**Region table for sample 4 : 14 dscDNA F**

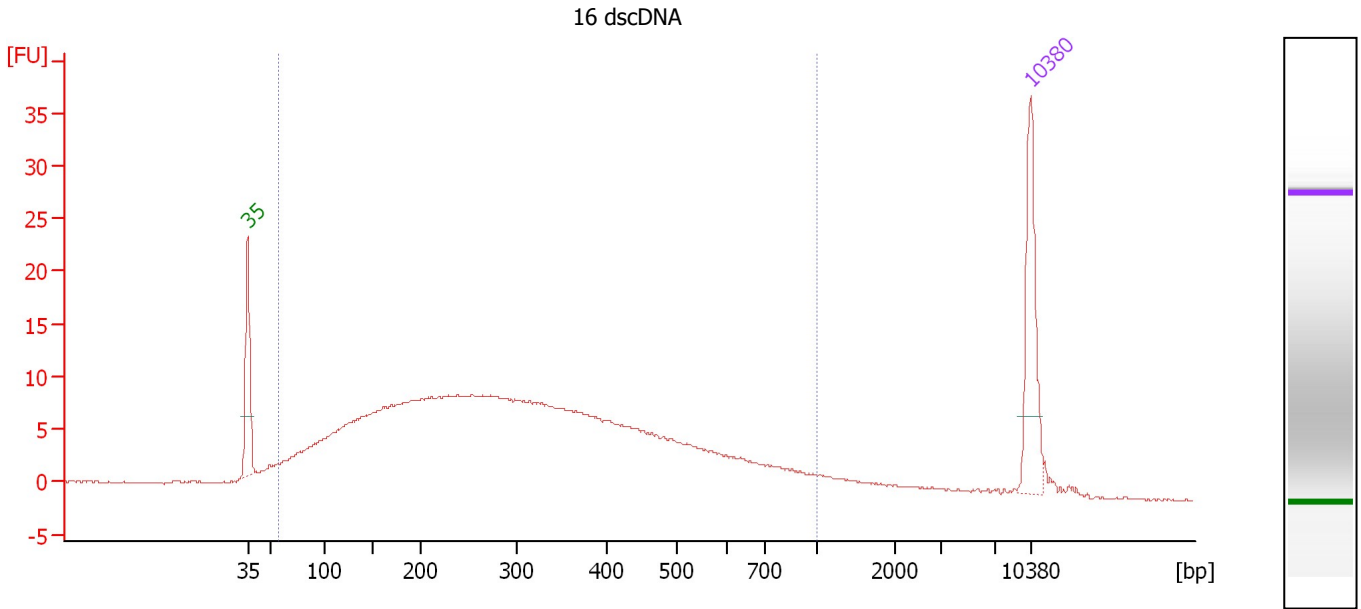
From [bp]	To [bp]	Average Size [bp]	Molarity [pmol/l]	Conc. [pg/μl]	Corr. Area	% of Total	Size distribution in CV [%]	Color
60	1,000	289	3,889.1	498.07	140.5	94	51.7	Blue



Assay Class: High Sensitivity DNA Assay  
 Data Path: C:\...ents and Settings\Bioanalyzer\2014-01-13\2014-01-13\_001.xad

Created: 1/13/2014 9:23:59 AM  
 Modified: 1/13/2014 10:03:48 AM

**Electropherogram Summary Continued ...**



**Overall Results for sample 5 : 16 dscDNA**

Number of peaks found: 0                      Corr. Area 1: 404.9  
 Noise: 0.1

**Peak table for sample 5 : 16 dscDNA**

Peak	Aligned Migration Time [s]	Size [bp]	Conc. [pg/μl]	Molarity [pmol/l]	Observations
1	43.00	35	125.00	5,411.3	Lower Marker
2	113.00	10,380	75.00	10.9	Upper Marker

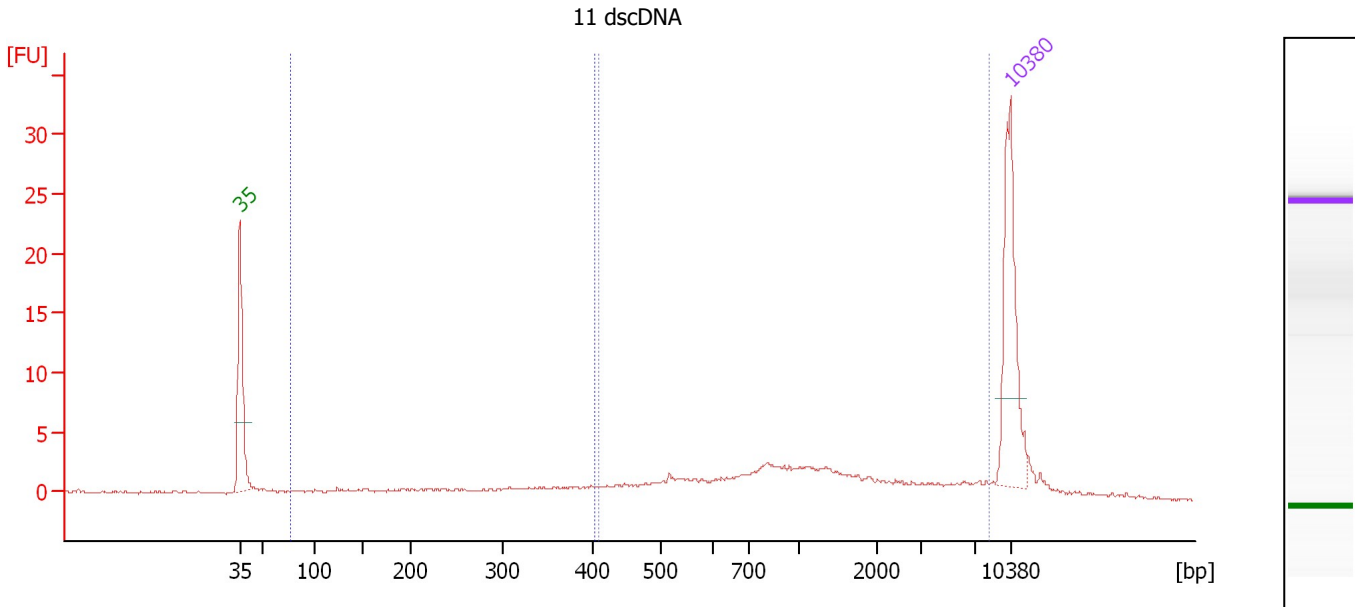
**Region table for sample 5 : 16 dscDNA**

From [bp]	To [bp]	Average Size [bp]	Molarity [pmol/l]	Conc. [pg/μl]	Corr. Area	% of Total	Size distribution in CV [%]	Color
57	1,000	323	11,651.7	1,581.67	404.9	93	53.4	Blue

Assay Class: High Sensitivity DNA Assay  
 Data Path: C:\...ents and Settings\Bioanalyzer\2014-01-13\2014-01-13\_001.xad

Created: 1/13/2014 9:23:59 AM  
 Modified: 1/13/2014 10:03:48 AM

**Electropherogram Summary Continued ...**



**Overall Results for sample 6 : 11 dscDNA**

Number of peaks found: 0                      Corr. Area 1: 56.6  
 Noise: 0.1                                      Corr. Area 2: 16.4

**Peak table for sample 6 : 11 dscDNA**

Peak	Aligned Migration Time [s]	Size [bp]	Conc. [pg/μl]	Molarity [pmol/l]	Observations
1	43.00	35	125.00	5,411.3	Lower Marker
2	113.00	10,380	75.00	10.9	Upper Marker

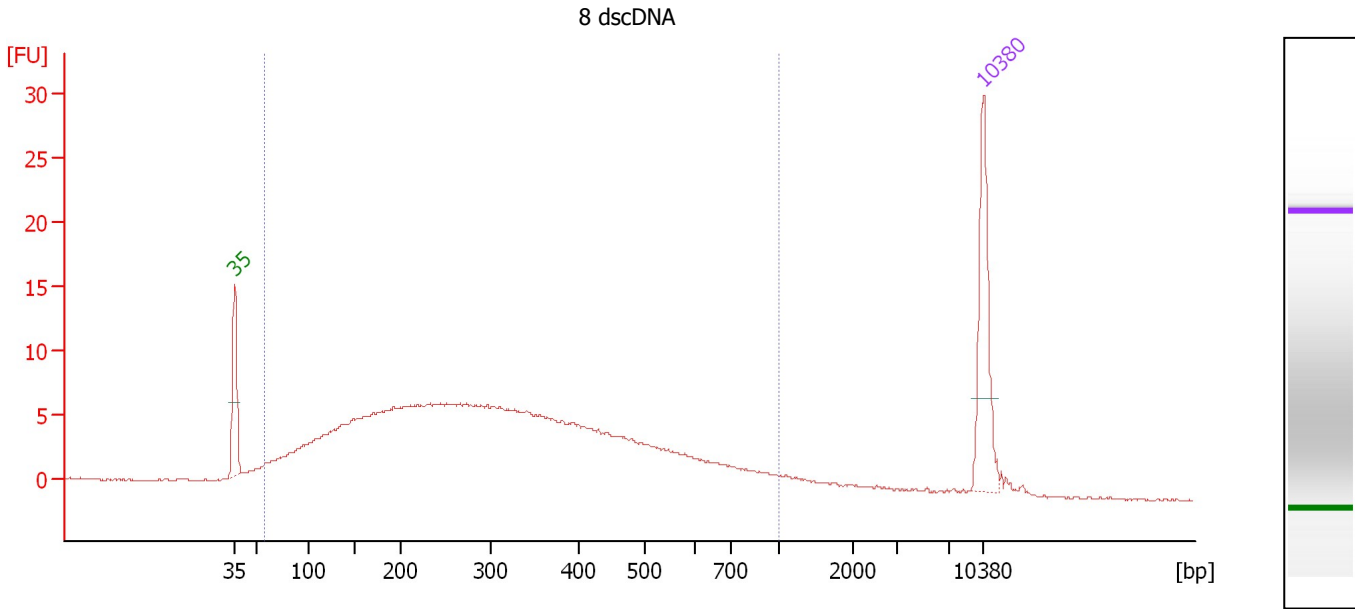
**Region table for sample 6 : 11 dscDNA**

From [bp]	To [bp]	Average Size [bp]	Molarity [pmol/l]	Conc. [pg/μl]	Corr. Area	% of Total	Size distribution in CV [%]	Color
77	401	269	447.6	61.43	16.4	20	33.7	Blue
407	8,354	1,713	268.2	152.03	56.6	69	100.0	Dark Blue

Assay Class: High Sensitivity DNA Assay  
 Data Path: C:\...ents and Settings\Bioanalyzer\2014-01-13\2014-01-13\_001.xad

Created: 1/13/2014 9:23:59 AM  
 Modified: 1/13/2014 10:03:48 AM

**Electropherogram Summary Continued ...**



**Overall Results for sample 7 : 8 dscDNA**

Number of peaks found: 0                      Corr. Area 1: 289.6  
 Noise: 0.1

**Peak table for sample 7 : 8 dscDNA**

Peak	Aligned Migration Time [s]	Size [bp]	Conc. [pg/μl]	Molarity [pmol/l]	Observations
1	43.00	35	125.00	5,411.3	Lower Marker
2	113.00	10,380	75.00	10.9	Upper Marker

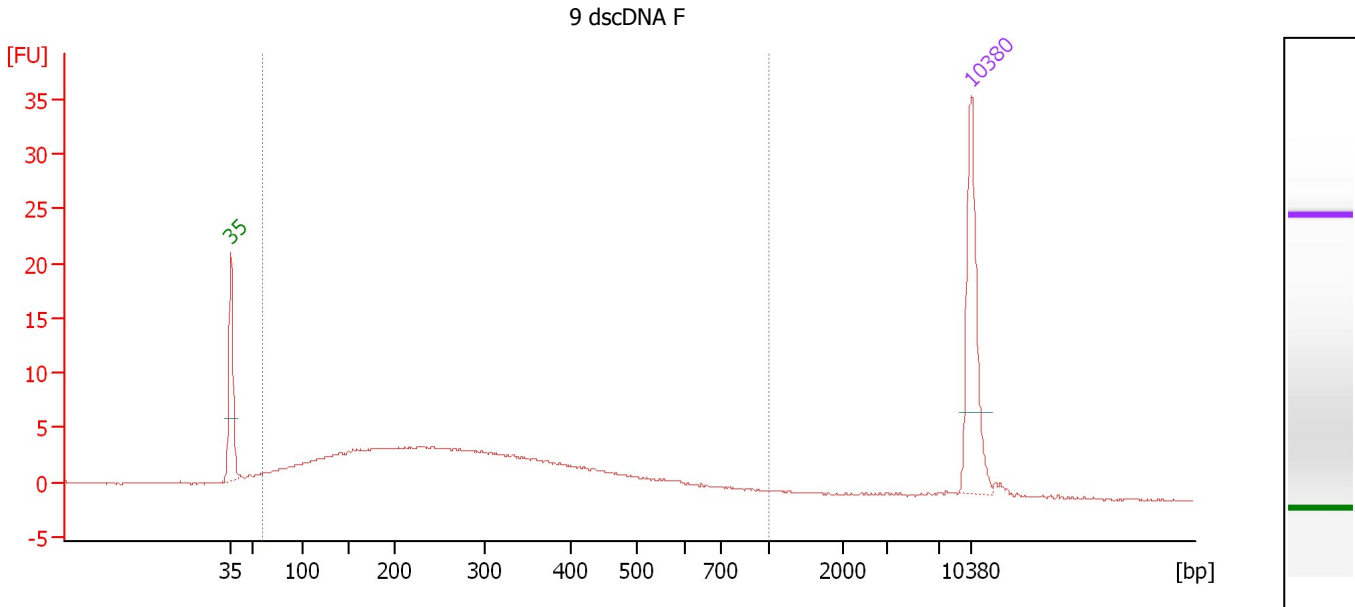
**Region table for sample 7 : 8 dscDNA**

From [bp]	To [bp]	Average Size [bp]	Molarity [pmol/l]	Conc. [pg/μl]	Corr. Area	% of Total	Size distribution in CV [%]	Color
58	1,000	327	9,621.3	1,330.44	289.6	94	52.8	Blue

Assay Class: High Sensitivity DNA Assay  
 Data Path: C:\...ents and Settings\Bioanalyzer\2014-01-13\2014-01-13\_001.xad

Created: 1/13/2014 9:23:59 AM  
 Modified: 1/13/2014 10:03:48 AM

**Electropherogram Summary Continued ...**



**Overall Results for sample 8 : 9 dscDNA F**

Number of peaks found: 0                      Corr. Area 1: 153.8  
 Noise: 0.1

**Peak table for sample 8 : 9 dscDNA F**

Peak	Aligned Migration Time [s]	Size [bp]	Conc. [pg/μl]	Molarity [pmol/l]	Observations
1	43.00	35	125.00	5,411.3	Lower Marker
2	113.00	10,380	75.00	10.9	Upper Marker

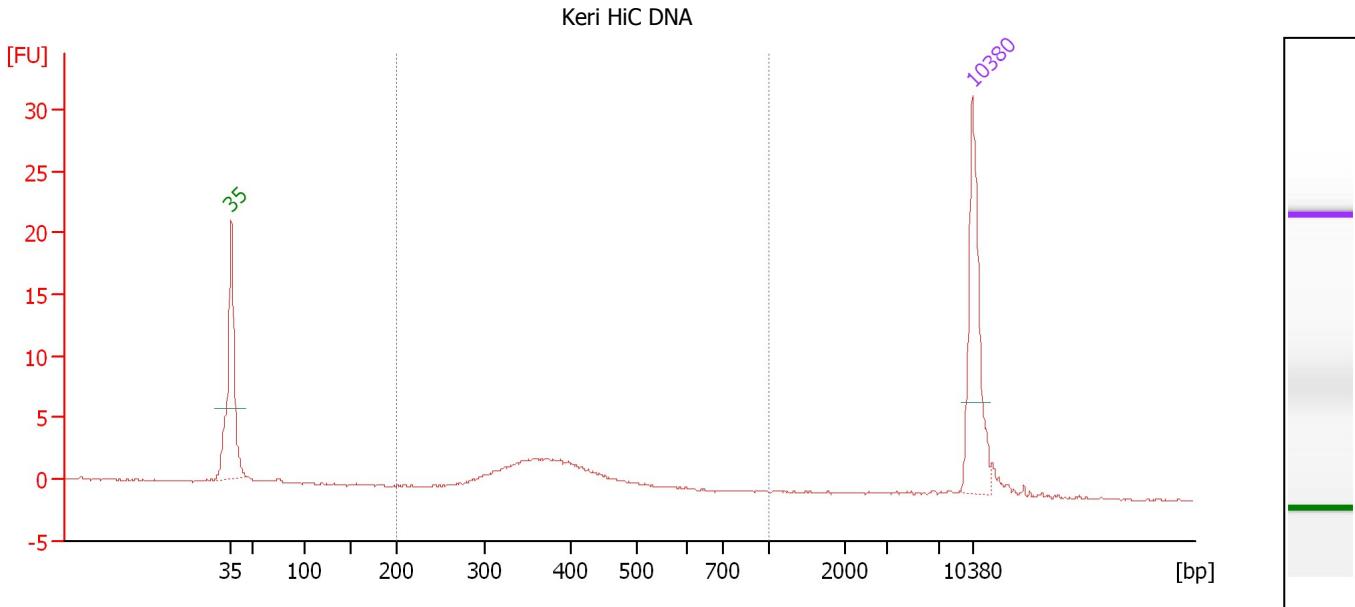
**Region table for sample 8 : 9 dscDNA F**

From [bp]	To [bp]	Average Size [bp]	Molarity [pmol/l]	Conc. [pg/μl]	Corr. Area	% of Total	Size distribution in CV [%]	Color
60	1,000	289	4,557.2	579.24	153.8	93	51.3	Blue

Assay Class: High Sensitivity DNA Assay  
 Data Path: C:\...ents and Settings\Bioanalyzer\2014-01-13\2014-01-13\_001.xad

Created: 1/13/2014 9:23:59 AM  
 Modified: 1/13/2014 10:03:48 AM

**Electropherogram Summary Continued ...**



**Overall Results for sample 9 : Keri HiC DNA**

Number of peaks found: 0                      Corr. Area 1: 33.8  
 Noise: 0.1

**Peak table for sample 9 : Keri HiC DNA**

Peak	Aligned Migration Time [s]	Size [bp]	Conc. [pg/μl]	Molarity [pmol/l]	Observations
1	43.00	35	125.00	5,411.3	Lower Marker
2	113.00	10,380	75.00	10.9	Upper Marker

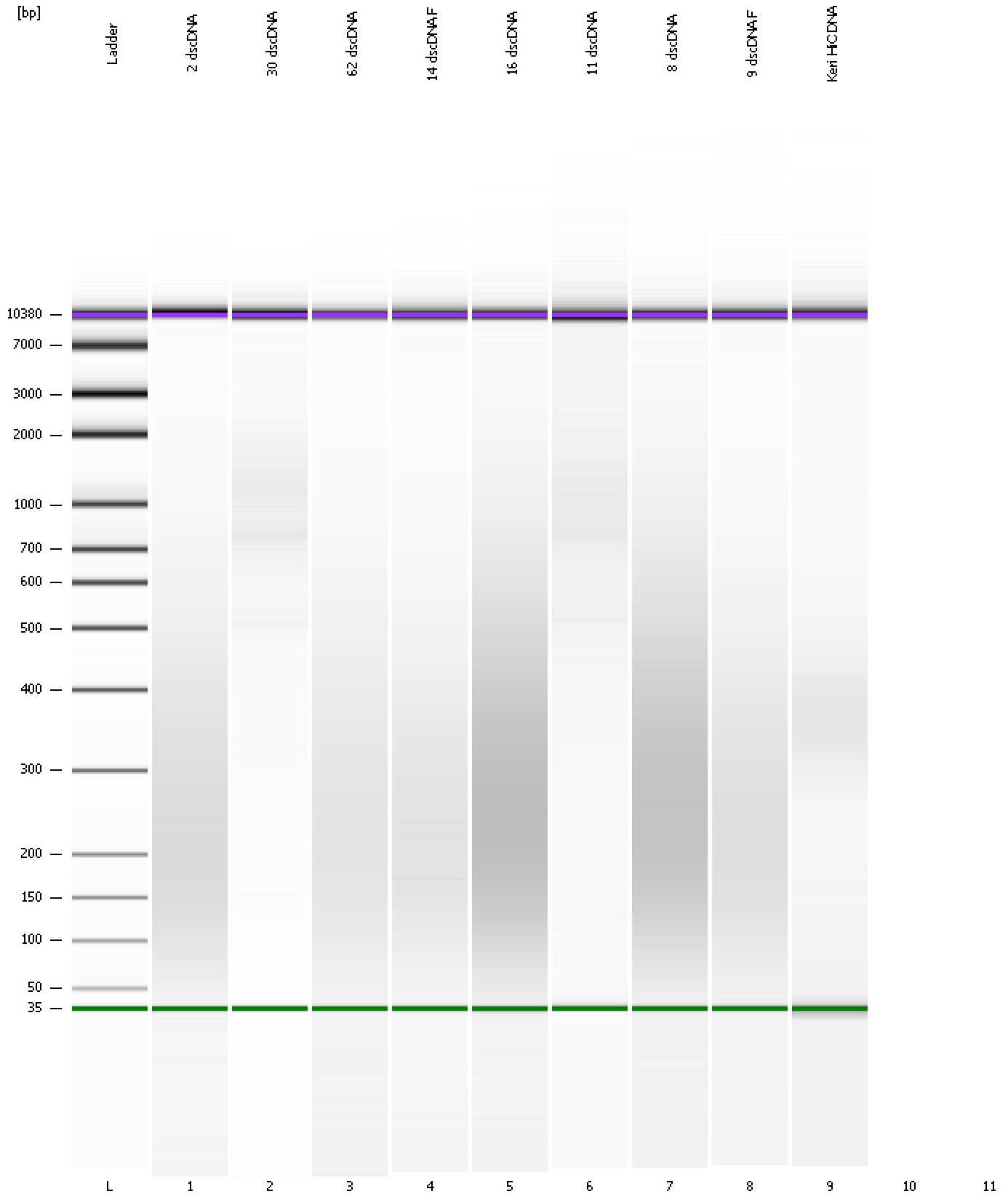
**Region table for sample 9 : Keri HiC DNA**

From [bp]	To [bp]	Average Size [bp]	Molarity [pmol/l]	Conc. [pg/μl]	Corr. Area	% of Total	Size distribution in CV [%]	Color
200	1,000	393	487.7	120.76	33.8	80	21.5	Blue

Assay Class: High Sensitivity DNA Assay  
Data Path: C:\...ents and Settings\Bioanalyzer\2014-01-13\2014-01-13\_001.xad

Created: 1/13/2014 9:23:59 AM  
Modified: 1/13/2014 10:03:48 AM

**Gel Image**



Assay Class: High Sensitivity DNA Assay  
Data Path: C:\...ents and Settings\Bioanalyzer\2014-01-13\2014-01-13\_001.xad

Created: 1/13/2014 9:23:59 AM  
Modified: 1/13/2014 10:03:48 AM

**Invalid Samples**

Sample 10 has not been run, no results available.

Sample 11 has not been run, no results available.