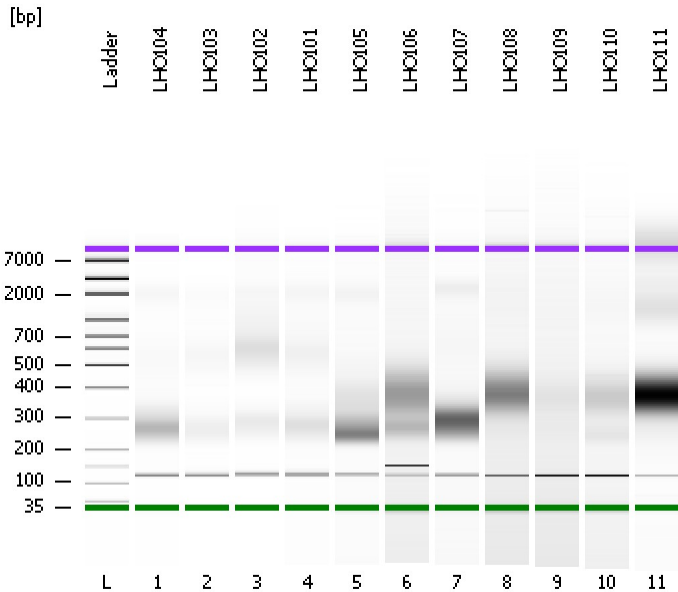


Assay Class: High Sensitivity DNA Assay
Data Path: C:\...ents and Settings\Bioanalyzer\2014-01-13\2014-01-13_002.xad

Created: 1/13/2014 3:30:41 PM
Modified: 1/13/2014 4:12:00 PM

Electrophoresis File Run Summary



Instrument Information:

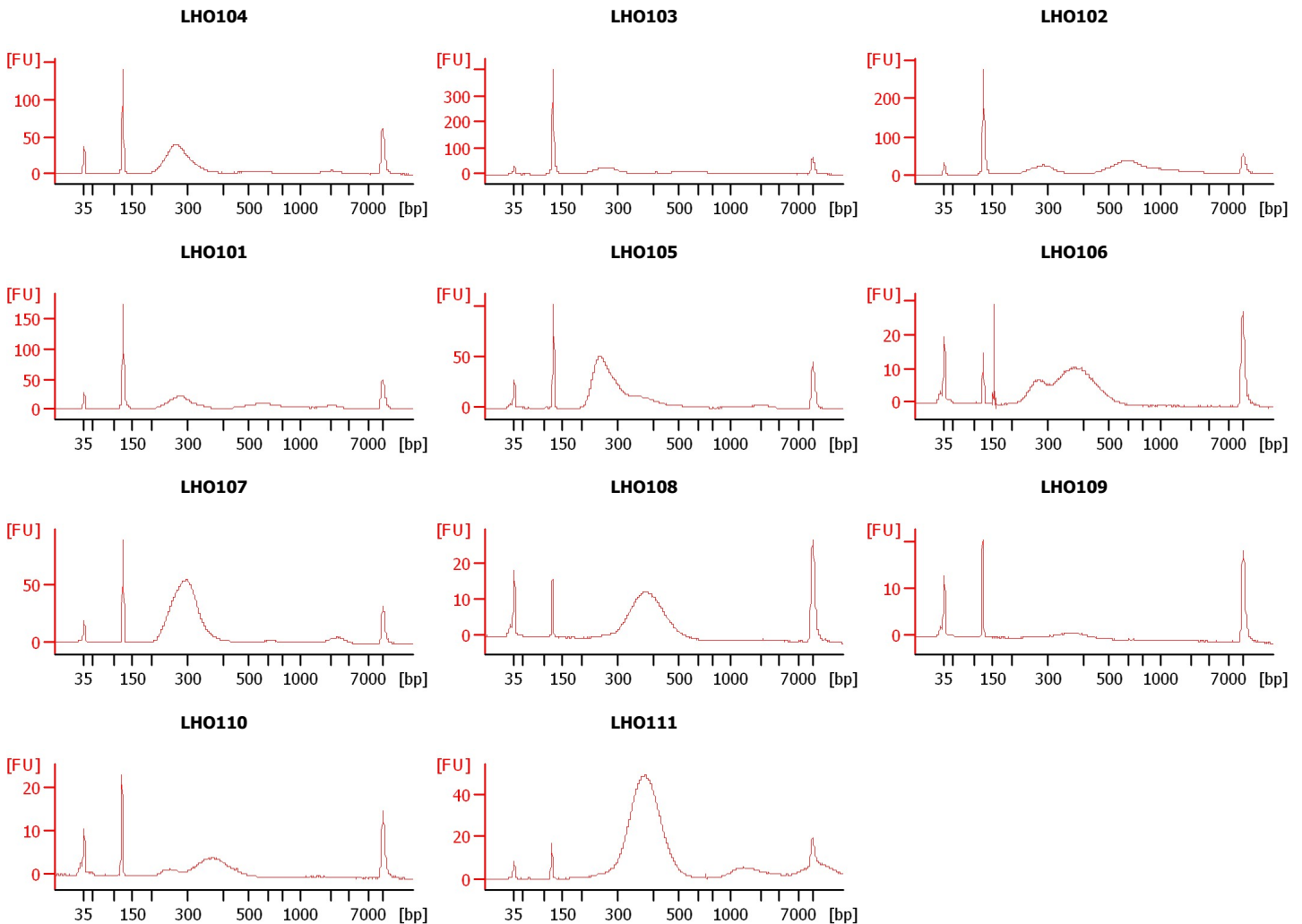
Instrument Name: DE13701086 Firmware: C.01.069
Serial#: DE13701086 Type: G2938B

Assay Information:

Assay Origin Path: C:\Program Files\Agilent\2100 bioanalyzer\2100 expert\assays\dsDNA\High Sensitivity DNA.xsy
Assay Class: High Sensitivity DNA Assay
Version: 1.03
Assay Comments: Copyright © 2003-2010 Agilent Technologies

Chip Information:

Chip Lot #: Reagent Kit Lot #: Chip Comments:



Assay Class: High Sensitivity DNA Assay
Data Path: C:\...ents and Settings\Bioanalyzer\2014-01-13\2014-01-13_002.xad

Created: 1/13/2014 3:30:41 PM
Modified: 1/13/2014 4:12:00 PM

Electrophoresis File Run Summary (Chip Summary)

Sample Name	Sample Comment	Rest. Digest	Status	Observation	Result Label	Result Color
LHO104		<input type="checkbox"/>	✓			
LHO103		<input type="checkbox"/>	✓			
LHO102		<input type="checkbox"/>	✓			
LHO101		<input type="checkbox"/>	✓			
LHO105		<input type="checkbox"/>	✓			
LHO106		<input type="checkbox"/>	✓			
LHO107		<input type="checkbox"/>	✓			
LHO108		<input type="checkbox"/>	✓			
LHO109		<input type="checkbox"/>	✓			
LHO110		<input type="checkbox"/>	✓			
LHO111		<input type="checkbox"/>	✓			
Ladder		<input type="checkbox"/>	✓			

Chip Lot #

Reagent Kit Lot #

Chip Comments :

Assay Class: High Sensitivity DNA Assay
Data Path: C:\...ents and Settings\Bioanalyzer\2014-01-13\2014-01-13_002.xad

Created: 1/13/2014 3:30:41 PM
Modified: 1/13/2014 4:12:00 PM

Electrophoresis Assay Details

General Analysis Settings

Number of Available Sample and Ladder Wells (Max.) : 12
Minimum Visible Range [s] : 32
Maximum Visible Range [s] : 138
Start Analysis Time Range [s] : 33
End Analysis Time Range [s] : 137.5
Ladder Concentration [pg/μl] : 1950
Uses Standard Area for Ladder Fragments
Lower Marker Concentration [pg/μl] : 125
Upper Marker Concentration [pg/μl] : 75
Used Upper Marker for Quantitation
Standard Curve Fit is Point to Point
Show Data Aligned to Lower and Upper Marker

Integrator Settings

Integration Start Time [s] : 33.05
Integration End Time [s] : 137
Slope Threshold : 0.8
Height Threshold [FU] : 5
Area Threshold : 0.1
Width Threshold [s] : 0.6
Baseline Plateau [s] : 0.5

Filter Settings

Filter Width [s] : 0.5
Polynomial Order : 4

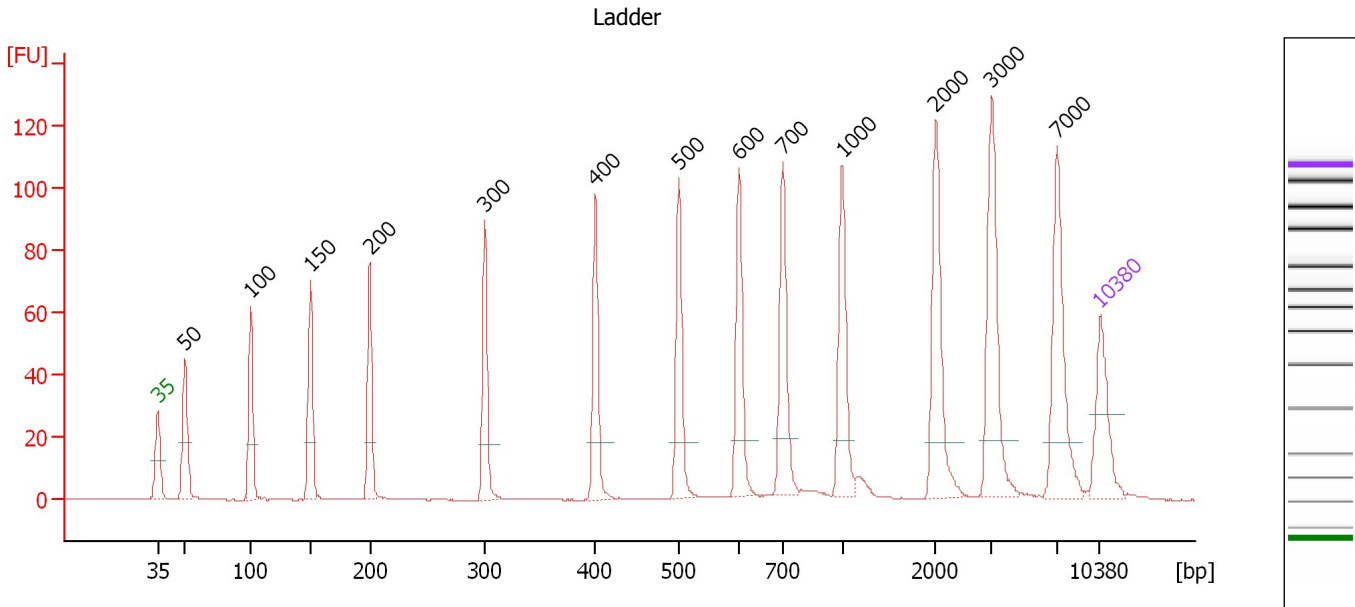
Ladder

Ladder Peak	Size	Area
1	35	160
2	50	210
3	100	208
4	150	221
5	200	242
6	300	270
7	400	305
8	500	306
9	600	336
10	700	321
11	1000	366
12	2000	413
13	3000	411
14	7000	400
15	10380	214

Assay Class: High Sensitivity DNA Assay
 Data Path: C:\...ents and Settings\Bioanalyzer\2014-01-13\2014-01-13_002.xad

Created: 1/13/2014 3:30:41 PM
 Modified: 1/13/2014 4:12:00 PM

Electropherogram Summary



Overall Results for Ladder

Noise: 0.1

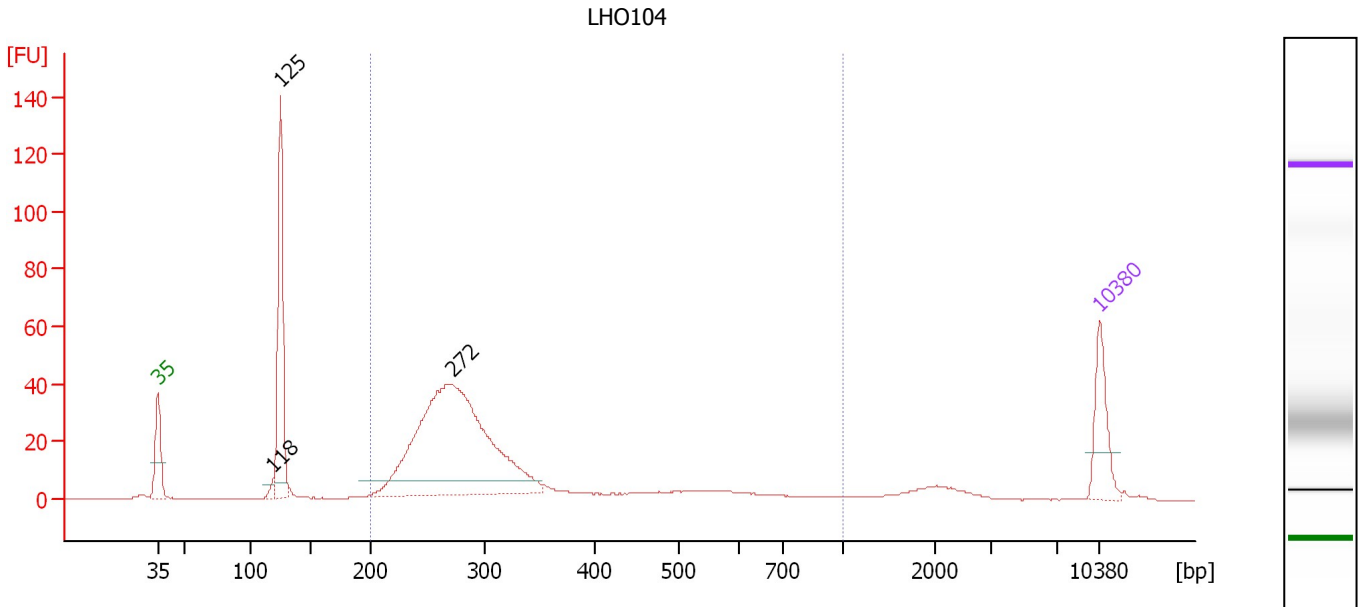
Peak table for Ladder

Peak	Aligned Migration Time [s]	Size [bp]	Conc. [pg/μl]	Molarity [pmol/l]	Observations
1	43.00	35	125.00	5,411.3	Lower Marker
2	45.07	50	150.00	4,545.5	Ladder Peak
3	49.90	100	150.00	2,272.7	Ladder Peak
4	54.34	150	150.00	1,515.2	Ladder Peak
5	58.77	200	150.00	1,136.4	Ladder Peak
6	67.29	300	150.00	757.6	Ladder Peak
7	75.51	400	150.00	568.2	Ladder Peak
8	81.70	500	150.00	454.5	Ladder Peak
9	86.19	600	150.00	378.8	Ladder Peak
10	89.47	700	150.00	324.7	Ladder Peak
11	93.85	1,000	150.00	227.3	Ladder Peak
12	100.80	2,000	150.00	113.6	Ladder Peak
13	104.94	3,000	150.00	75.8	Ladder Peak
14	109.83	7,000	150.00	32.5	Ladder Peak
15	113.00	10,380	75.00	10.9	Upper Marker

Assay Class: High Sensitivity DNA Assay
 Data Path: C:\...ents and Settings\Bioanalyzer\2014-01-13\2014-01-13_002.xad

Created: 1/13/2014 3:30:41 PM
 Modified: 1/13/2014 4:12:00 PM

Electropherogram Summary Continued ...



Overall Results for sample 1 : LHO104

Number of peaks found: 3 Corr. Area 1: 435.9
 Noise: 0.1

Peak table for sample 1 : LHO104

Peak	Aligned Migration Time [s]	Size [bp]	Conc. [pg/μl]	Molarity [pmol/l]	Observations
1	43.00	35	125.00	5,411.3	Lower Marker
2	51.53	118	11.61	148.8	
3	52.12	125	305.76	3,705.4	
4	64.89	272	803.97	4,482.1	
5	113.00	10,380	75.00	10.9	Upper Marker

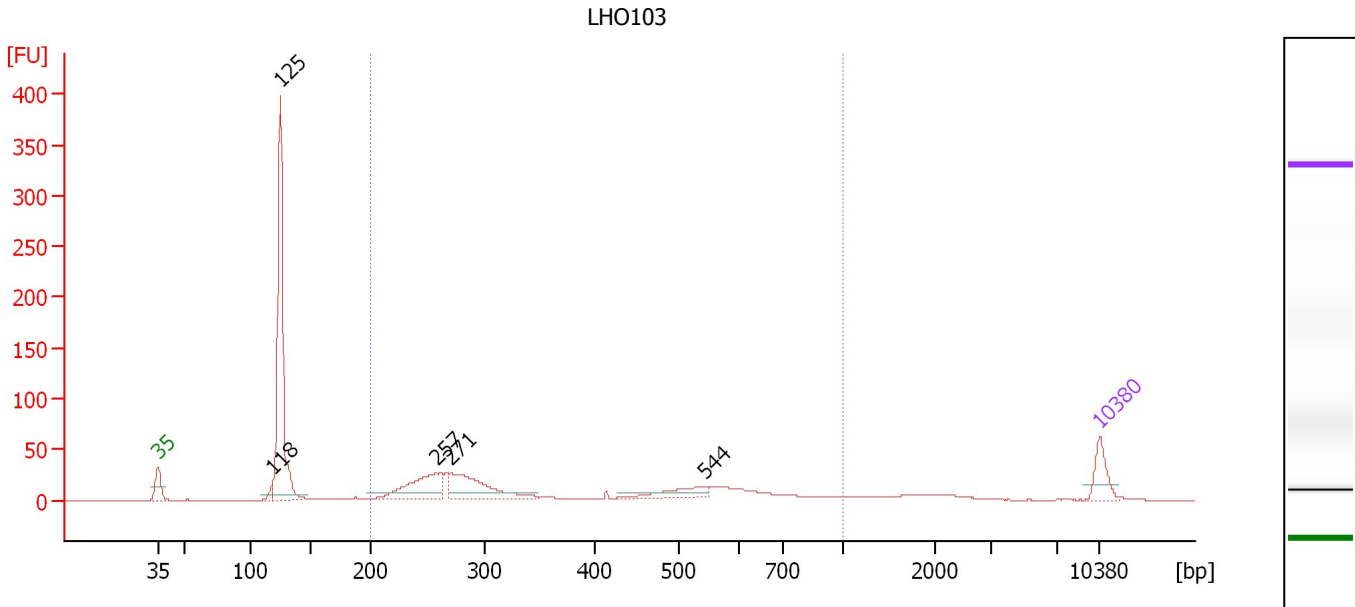
Region table for sample 1 : LHO104

From [bp]	To [bp]	Average Size [bp]	Molarity [pmol/l]	Conc. [pg/μl]	Corr. Area	% of Total	Size distribution in CV [%]	Color
200	1,000	315	5,150.7	976.59	435.9	73	35.0	Blue

Assay Class: High Sensitivity DNA Assay
 Data Path: C:\...ents and Settings\Bioanalyzer\2014-01-13\2014-01-13_002.xad

Created: 1/13/2014 3:30:41 PM
 Modified: 1/13/2014 4:12:00 PM

Electropherogram Summary Continued ...



Overall Results for sample 2 : LHO103

Number of peaks found: 5 Corr. Area 1: 437.8
 Noise: 0.1

Peak table for sample 2 : LHO103

Peak	Aligned Migration Time [s]	Size [bp]	Conc. [pg/μl]	Molarity [pmol/l]	Observations
1	43.00	35	125.00	5,411.3	Lower Marker
2	51.55	118	26.96	344.7	
3	52.14	125	938.84	11,359.8	
4	63.67	257	240.86	1,417.5	
5	64.81	271	270.73	1,514.3	
6	83.69	544	85.83	238.9	
7	113.00	10,380	75.00	10.9	Upper Marker

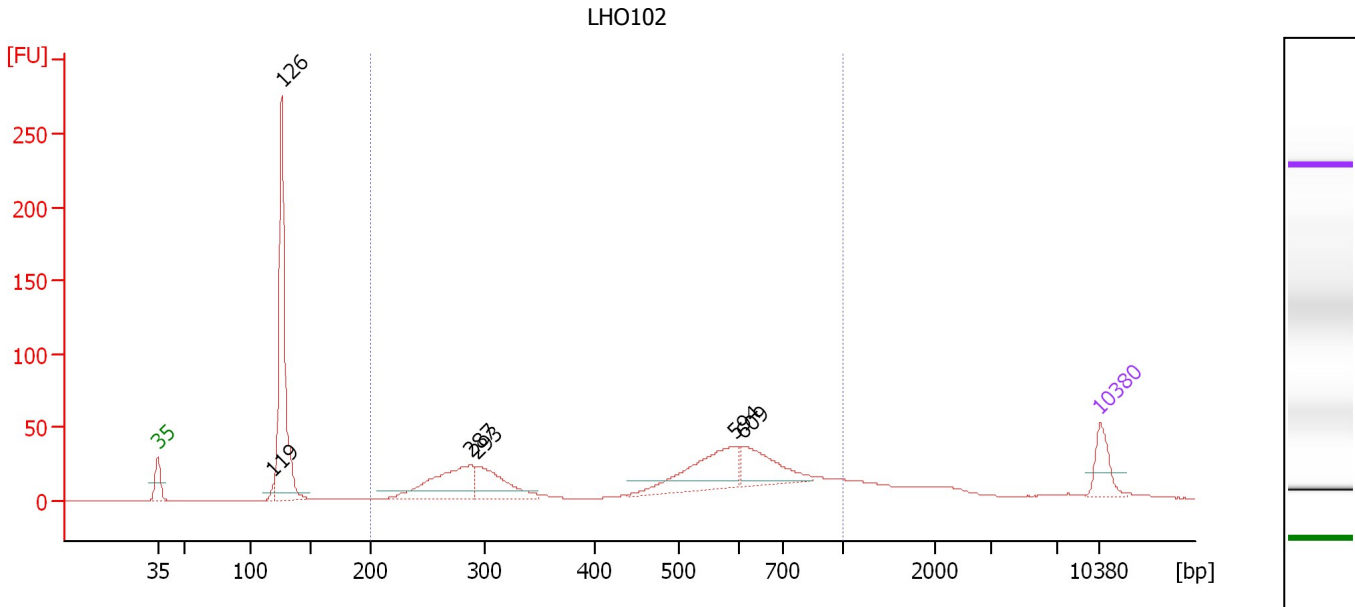
Region table for sample 2 : LHO103

From [bp]	To [bp]	Average Size [bp]	Molarity [pmol/l]	Conc. [pg/μl]	Corr. Area	% of Total	Size distribution in CV [%]	Color
200	1,000	406	4,432.4	948.11	437.8	51	43.3	Blue

Assay Class: High Sensitivity DNA Assay
 Data Path: C:\...ents and Settings\Bioanalyzer\2014-01-13\2014-01-13_002.xad

Created: 1/13/2014 3:30:41 PM
 Modified: 1/13/2014 4:12:00 PM

Electropherogram Summary Continued ...



Overall Results for sample 3 : LHO102

Number of peaks found: 6 Corr. Area 1: 625.0
 Noise: 0.1

Peak table for sample 3 : LHO102

Peak	Aligned Migration Time [s]	Size [bp]	Conc. [pg/μl]	Molarity [pmol/l]	Observations
1	43.00	35	125.00	5,411.3	Lower Marker
2	51.60	119	16.28	207.0	
3	52.21	126	758.98	9,125.5	
4	66.18	287	282.66	1,492.4	
5	66.69	293	192.01	993.2	
6	85.92	594	256.77	654.9	
7	86.48	609	172.35	428.9	
8	113.00	10,380	75.00	10.9	Upper Marker

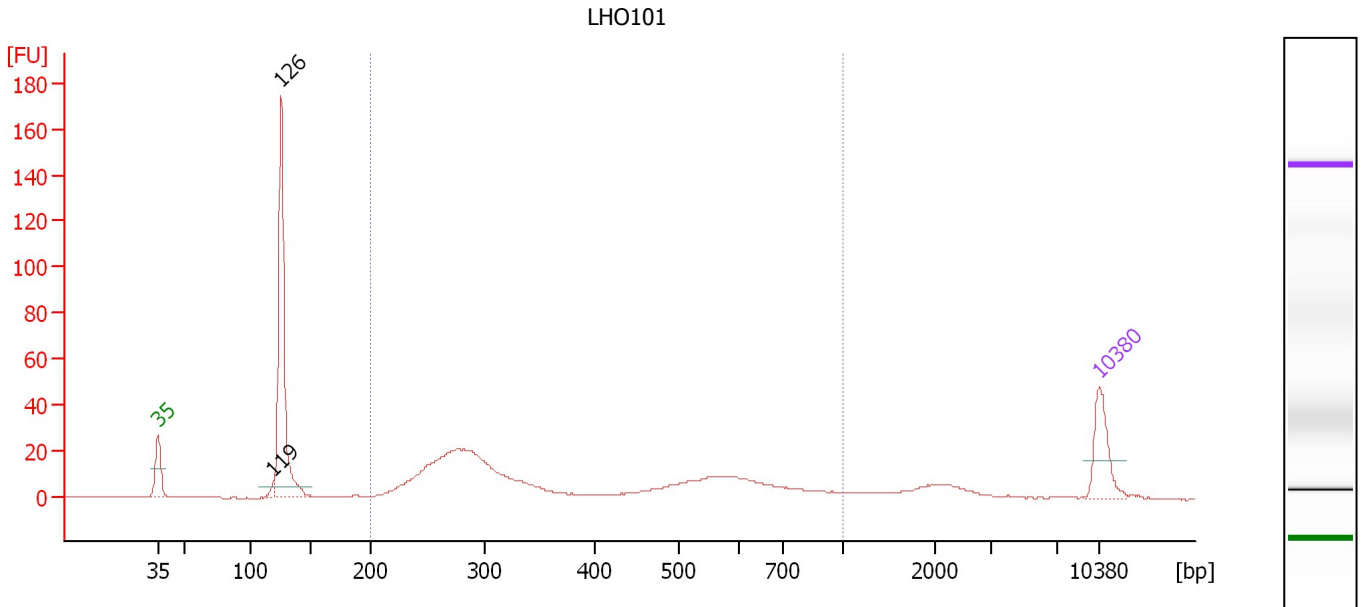
Region table for sample 3 : LHO102

From [bp]	To [bp]	Average Size [bp]	Molarity [pmol/l]	Conc. [pg/μl]	Corr. Area	% of Total	Size distribution in CV [%]	Color
200	1,000	523	4,926.3	1,333.54	625.0	60	36.9	Blue

Assay Class: High Sensitivity DNA Assay
 Data Path: C:\...ents and Settings\Bioanalyzer\2014-01-13\2014-01-13_002.xad

Created: 1/13/2014 3:30:41 PM
 Modified: 1/13/2014 4:12:00 PM

Electropherogram Summary Continued ...



Overall Results for sample 4 : LHO101

Number of peaks found: 2 Corr. Area 1: 328.9
 Noise: 0.1

Peak table for sample 4 : LHO101

Peak	Aligned Migration Time [s]	Size [bp]	Conc. [pg/μl]	Molarity [pmol/l]	Observations
1	43.00	35	125.00	5,411.3	Lower Marker
2	51.56	119	11.59	148.0	
3	52.17	126	496.77	5,993.8	
4	113.00	10,380	75.00	10.9	Upper Marker

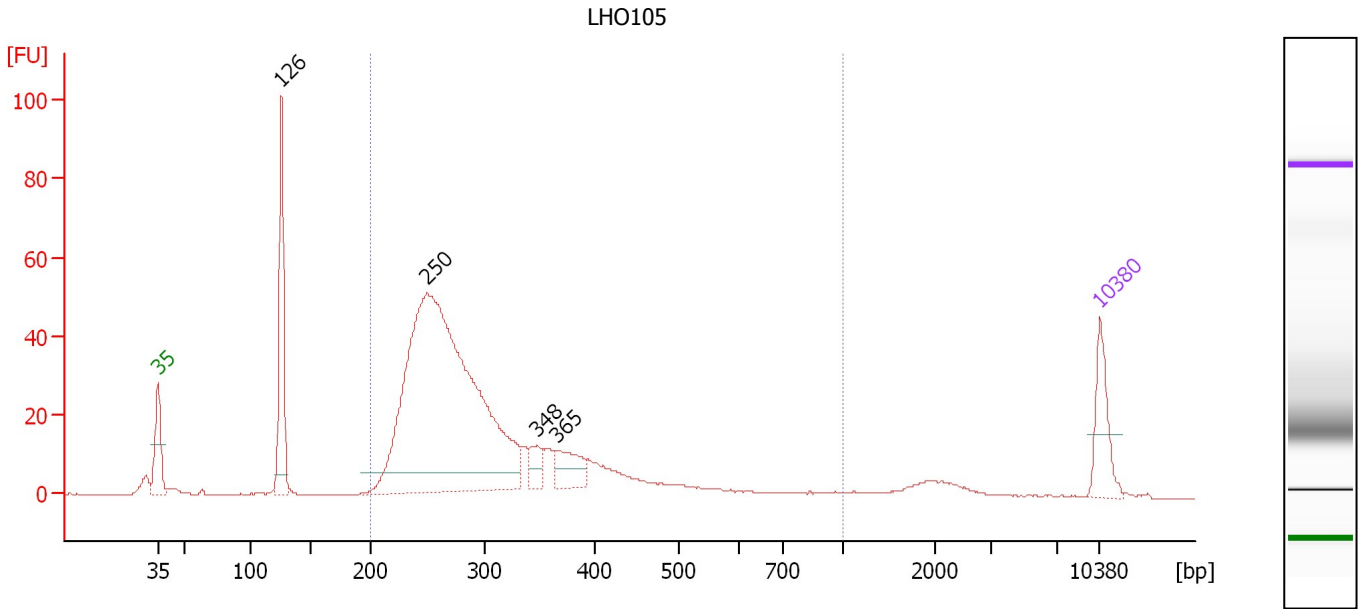
Region table for sample 4 : LHO101

From [bp]	To [bp]	Average Size [bp]	Molarity [pmol/l]	Conc. [pg/μl]	Corr. Area	% of Total	Size distribution in CV [%]	Color
200	1,000	413	3,526.3	774.80	328.9	59	43.0	Blue

Assay Class: High Sensitivity DNA Assay
 Data Path: C:\...ents and Settings\Bioanalyzer\2014-01-13\2014-01-13_002.xad

Created: 1/13/2014 3:30:41 PM
 Modified: 1/13/2014 4:12:00 PM

Electropherogram Summary Continued ...



Overall Results for sample 5 : LHO105

Number of peaks found: 4 Corr. Area 1: 580.4
 Noise: 0.1

Peak table for sample 5 : LHO105

Peak	Aligned Migration Time [s]	Size [bp]	Conc. [pg/μl]	Molarity [pmol/l]	Observations
1	43.00	35	125.00	5,411.3	Lower Marker
2	52.17	126	281.81	3,400.0	
3	63.01	250	1,430.58	8,677.3	
4	71.20	348	44.79	195.2	
5	72.66	365	74.81	310.3	
6	113.00	10,380	75.00	10.9	Upper Marker

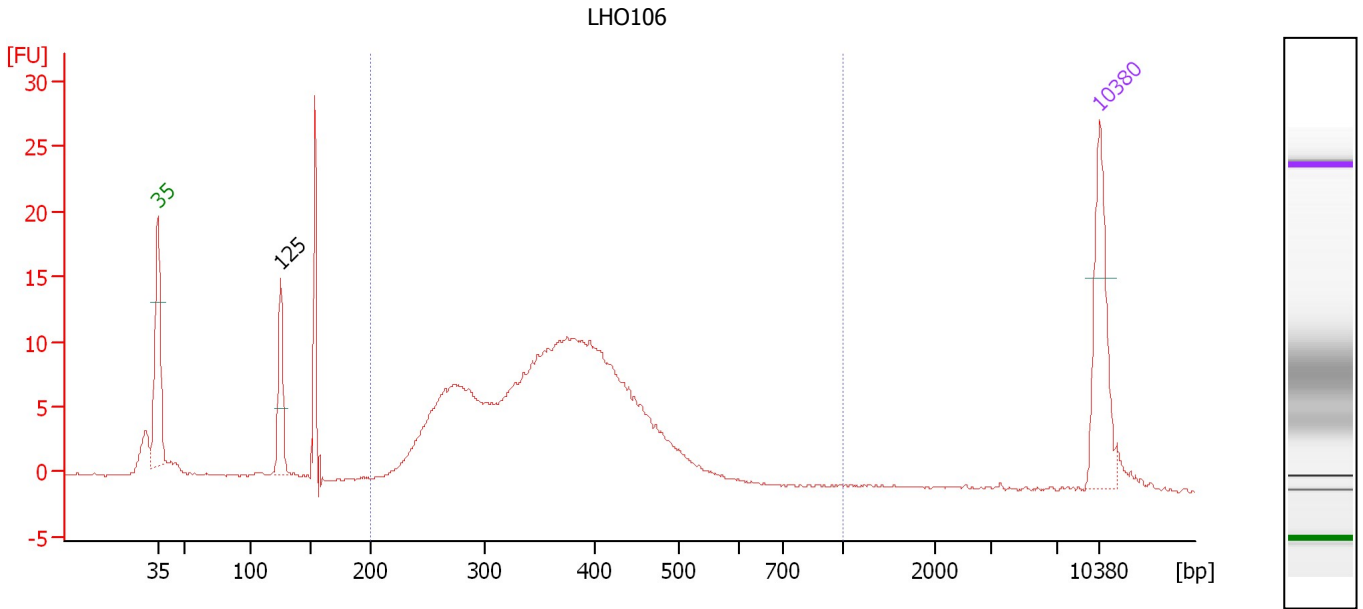
Region table for sample 5 : LHO105

From [bp]	To [bp]	Average Size [bp]	Molarity [pmol/l]	Conc. [pg/μl]	Corr. Area	% of Total	Size distribution in CV [%]	Color
200	1,000	310	9,590.6	1,807.21	580.4	83	32.2	Blue

Assay Class: High Sensitivity DNA Assay
 Data Path: C:\...ents and Settings\Bioanalyzer\2014-01-13\2014-01-13_002.xad

Created: 1/13/2014 3:30:41 PM
 Modified: 1/13/2014 4:12:00 PM

Electropherogram Summary Continued ...



Overall Results for sample 6 : LHO106

Number of peaks found: 1 Corr. Area 1: 202.5
 Noise: 0.1

Peak table for sample 6 : LHO106

Peak	Aligned Migration Time [s]	Size [bp]	Conc. [pg/μl]	Molarity [pmol/l]	Observations
1	43.00	35	125.00	5,411.3	Lower Marker
2	52.13	125	65.64	795.0	
3	113.00	10,380	75.00	10.9	Upper Marker

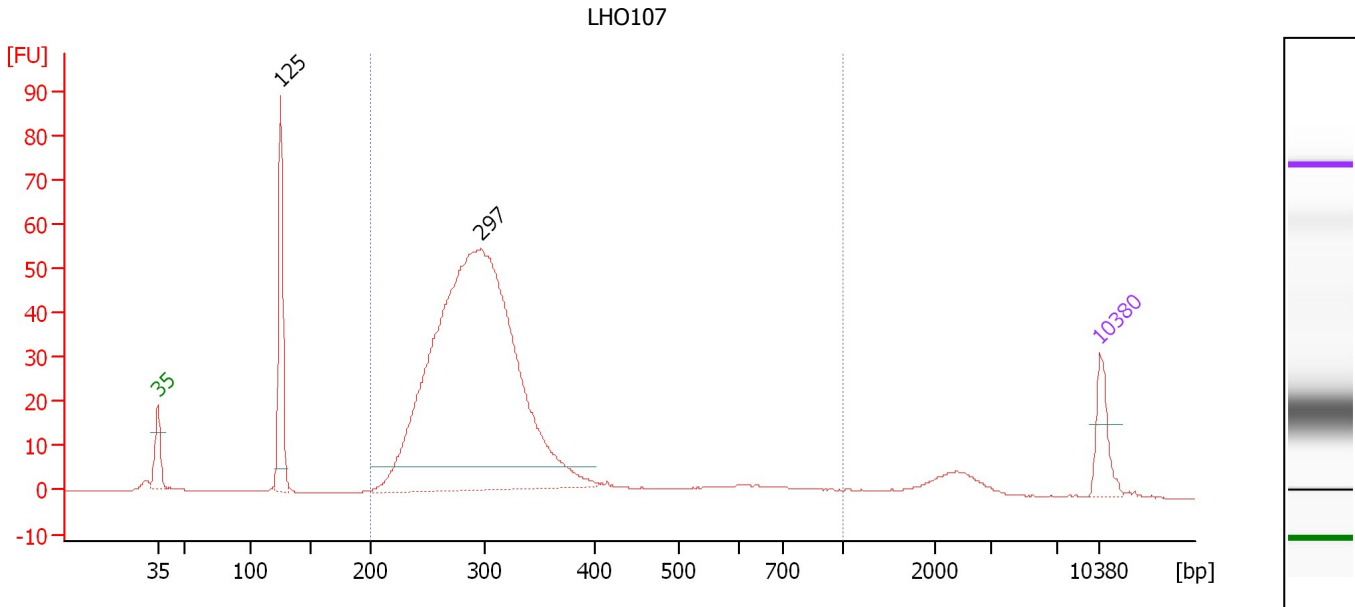
Region table for sample 6 : LHO106

From [bp]	To [bp]	Average Size [bp]	Molarity [pmol/l]	Conc. [pg/μl]	Corr. Area	% of Total	Size distribution in CV [%]	Color
200	1,000	369	3,952.5	899.49	202.5	82	22.9	Blue

Assay Class: High Sensitivity DNA Assay
 Data Path: C:\...ents and Settings\Bioanalyzer\2014-01-13\2014-01-13_002.xad

Created: 1/13/2014 3:30:41 PM
 Modified: 1/13/2014 4:12:00 PM

Electropherogram Summary Continued ...



Overall Results for sample 7 : LHO107

Number of peaks found: 2 Corr. Area 1: 604.8
 Noise: 0.1

Peak table for sample 7 : LHO107

Peak	Aligned Migration Time [s]	Size [bp]	Conc. [pg/μl]	Molarity [pmol/l]	Observations
1	43.00	35	125.00	5,411.3	Lower Marker
2	52.12	125	356.80	4,324.1	
3	67.01	297	2,451.78	12,520.8	
4	113.00	10,380	75.00	10.9	Upper Marker

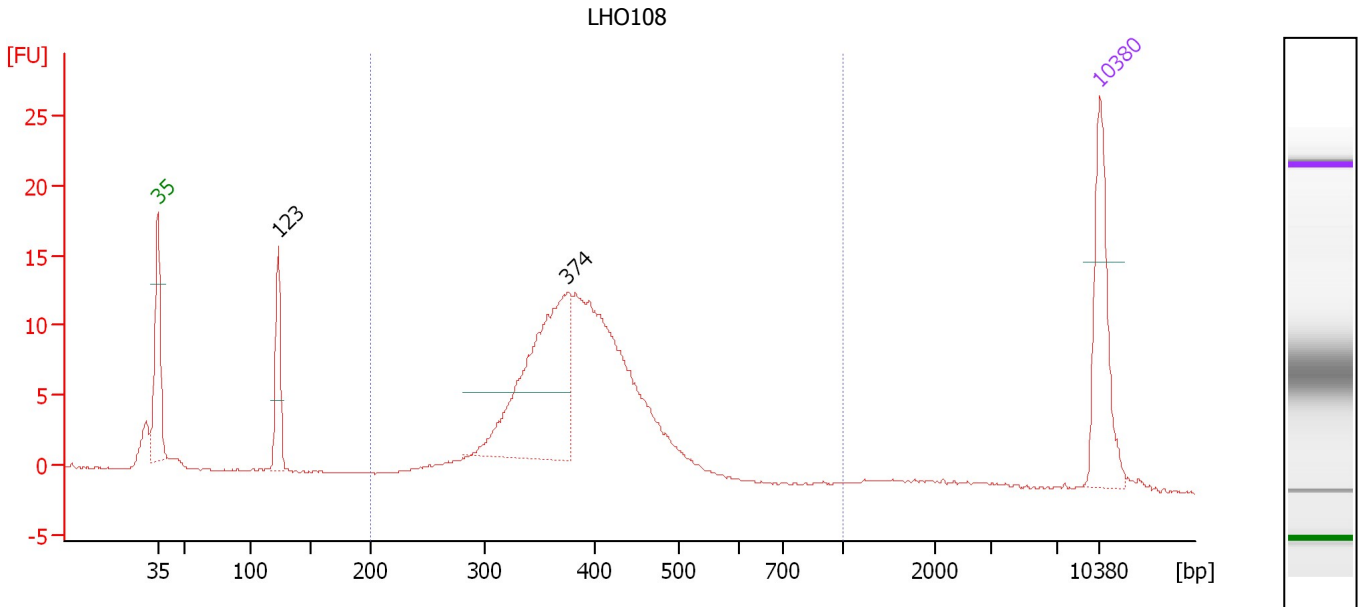
Region table for sample 7 : LHO107

From [bp]	To [bp]	Average Size [bp]	Molarity [pmol/l]	Conc. [pg/μl]	Corr. Area	% of Total	Size distribution in CV [%]	Color
200	1,000	315	13,806.1	2,697.47	604.8	85	30.2	Blue

Assay Class: High Sensitivity DNA Assay
 Data Path: C:\...ents and Settings\Bioanalyzer\2014-01-13\2014-01-13_002.xad

Created: 1/13/2014 3:30:41 PM
 Modified: 1/13/2014 4:12:00 PM

Electropherogram Summary Continued ...



Overall Results for sample 8 : LHO108

Number of peaks found: 2 Corr. Area 1: 162.8
 Noise: 0.1

Peak table for sample 8 : LHO108

Peak	Aligned Migration Time [s]	Size [bp]	Conc. [pg/μl]	Molarity [pmol/l]	Observations
1	43.00	35	125.00	5,411.3	Lower Marker
2	51.97	123	64.58	793.8	
3	73.41	374	229.85	930.0	
4	113.00	10,380	75.00	10.9	Upper Marker

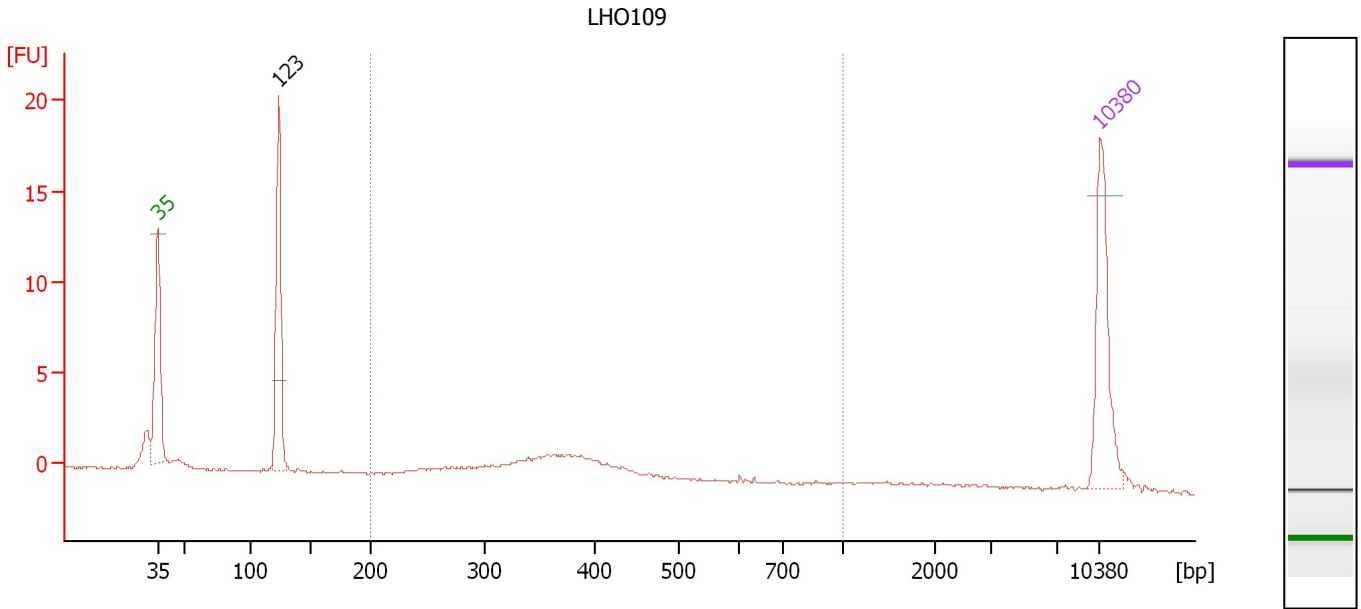
Region table for sample 8 : LHO108

From [bp]	To [bp]	Average Size [bp]	Molarity [pmol/l]	Conc. [pg/μl]	Corr. Area	% of Total	Size distribution in CV [%]	Color
200	1,000	390	2,682.2	667.91	162.8	85	16.8	Blue

Assay Class: High Sensitivity DNA Assay
 Data Path: C:\...ents and Settings\Bioanalyzer\2014-01-13\2014-01-13_002.xad

Created: 1/13/2014 3:30:41 PM
 Modified: 1/13/2014 4:12:00 PM

Electropherogram Summary Continued ...



Overall Results for sample 9 : LHO109

Number of peaks found: 1 Corr. Area 1: 18.7
 Noise: 0.1

Peak table for sample 9 : LHO109

Peak	Aligned Migration Time [s]	Size [bp]	Conc. [pg/μl]	Molarity [pmol/l]	Observations
1	43.00	35	125.00	5,411.3	Lower Marker
2	51.97	123	130.64	1,605.4	
3	113.00	10,380	75.00	10.9	Upper Marker

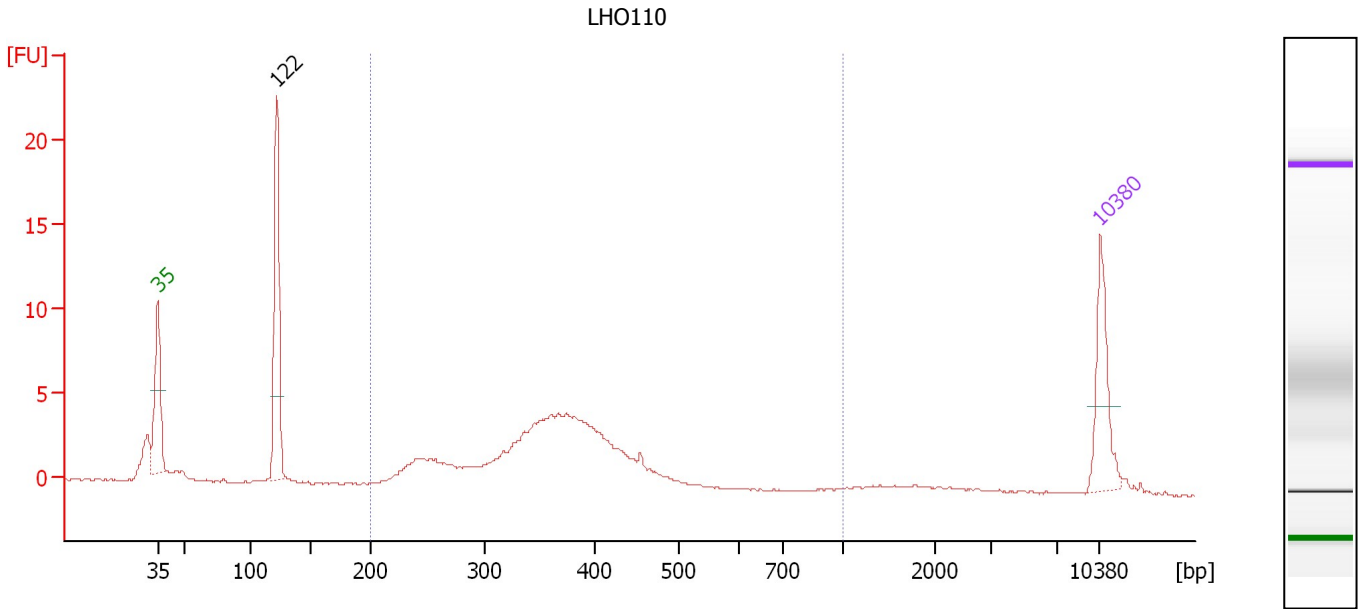
Region table for sample 9 : LHO109

From [bp]	To [bp]	Average Size [bp]	Molarity [pmol/l]	Conc. [pg/μl]	Corr. Area	% of Total	Size distribution in CV [%]	Color
200	1,000	384	544.0	127.09	18.7	44	29.1	Blue

Assay Class: High Sensitivity DNA Assay
 Data Path: C:\...ents and Settings\Bioanalyzer\2014-01-13\2014-01-13_002.xad

Created: 1/13/2014 3:30:41 PM
 Modified: 1/13/2014 4:12:00 PM

Electropherogram Summary Continued ...



Overall Results for sample 10 : LHO110

Number of peaks found: 1 Corr. Area 1: 58.8
 Noise: 0.1

Peak table for sample 10 : LHO110

Peak	Aligned Migration Time [s]	Size [bp]	Conc. [pg/μl]	Molarity [pmol/l]	Observations
1	43.00	35	125.00	5,411.3	Lower Marker
2	51.86	122	204.05	2,532.7	
3	113.00	10,380	75.00	10.9	Upper Marker

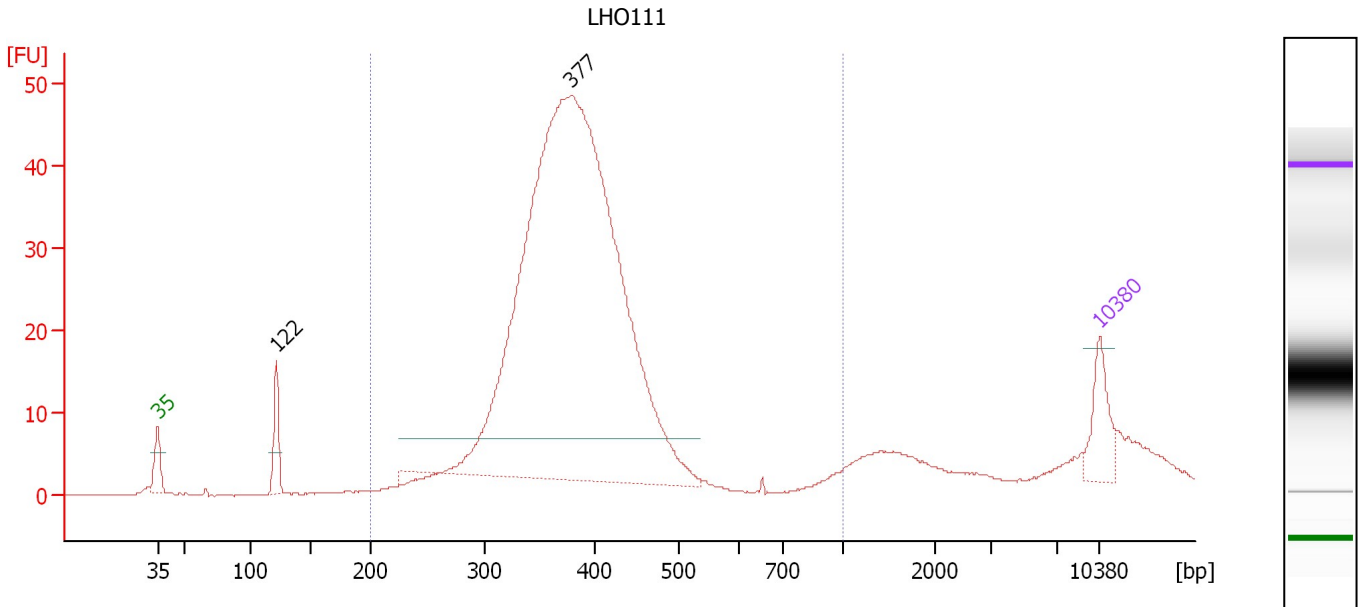
Region table for sample 10 : LHO110

From [bp]	To [bp]	Average Size [bp]	Molarity [pmol/l]	Conc. [pg/μl]	Corr. Area	% of Total	Size distribution in CV [%]	Color
200	1,000	362	2,468.3	558.07	58.8	68	20.2	Blue

Assay Class: High Sensitivity DNA Assay
 Data Path: C:\...ents and Settings\Bioanalyzer\2014-01-13\2014-01-13_002.xad

Created: 1/13/2014 3:30:41 PM
 Modified: 1/13/2014 4:12:00 PM

Electropherogram Summary Continued ...



Overall Results for sample 11 : LHO111

Number of peaks found: 2 Corr. Area 1: 564.3
 Noise: 0.1

Peak table for sample 11 : LHO111

Peak	Aligned Migration Time [s]	Size [bp]	Conc. [pg/μl]	Molarity [pmol/l]	Observations
1	43.00	35	125.00	5,411.3	Lower Marker
2	51.82	122	85.77	1,068.6	
3	73.64	377	2,599.34	10,438.2	
4	113.00	10,380	75.00	10.9	Upper Marker

Region table for sample 11 : LHO111

From [bp]	To [bp]	Average Size [bp]	Molarity [pmol/l]	Conc. [pg/μl]	Corr. Area	% of Total	Size distribution in CV [%]	Color
200	1,000	390	12,381.0	3,048.90	564.3	83	22.2	Blue

Assay Class: High Sensitivity DNA Assay
Data Path: C:\...ents and Settings\Bioanalyzer\2014-01-13\2014-01-13_002.xad

Created: 1/13/2014 3:30:41 PM
Modified: 1/13/2014 4:12:00 PM

Gel Image

