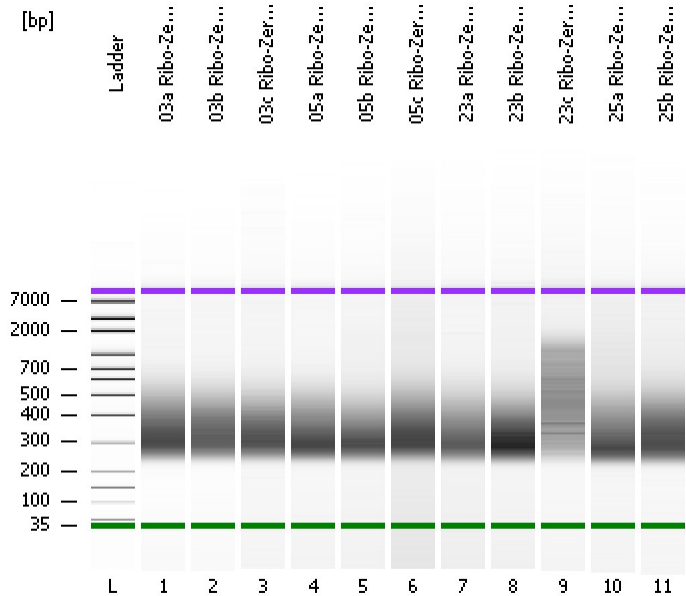


Assay Class: High Sensitivity DNA Assay
Data Path: C:\...ents and Settings\Bioanalyzer\2014-01-15\2014-01-15_001.xad

Created: 1/15/2014 3:04:55 PM
Modified: 1/15/2014 5:11:27 PM

Electrophoresis File Run Summary



Instrument Information:

Instrument Name: DE13701086 Firmware: C.01.069
Serial#: DE13701086 Type: G2938B

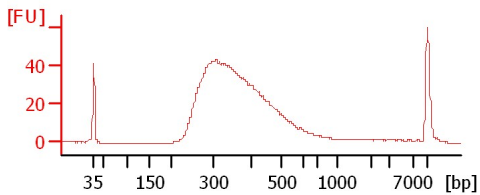
Assay Information:

Assay Origin Path: C:\Program Files\Agilent\2100 bioanalyzer\2100 expert\assays\dsDNA\High Sensitivity DNA.xsy
Assay Class: High Sensitivity DNA Assay
Version: 1.03
Assay Comments: Copyright © 2003-2010 Agilent Technologies

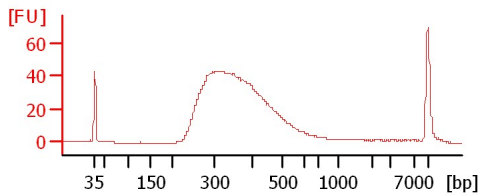
Chip Information:

Chip Lot #:
Reagent Kit Lot #:
Chip Comments:

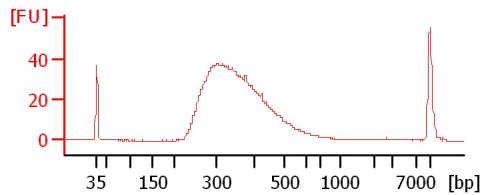
03a Ribo-Zero Lib 1:12



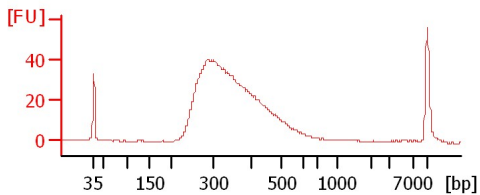
03b Ribo-Zero Lib 1:20



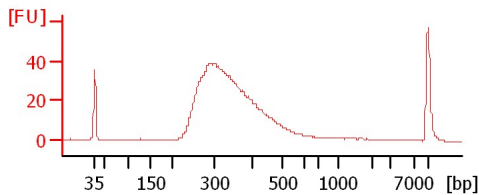
03c Ribo-Zero Lib 1:17



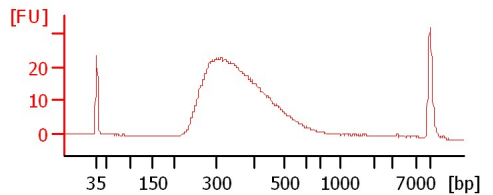
05a Ribo-Zero Lib 1:13



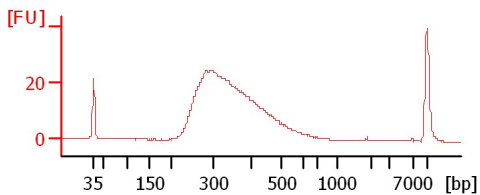
05b Ribo-Zero Lib 1:15



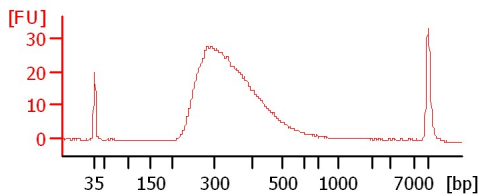
05c Ribo-Zero Lib 1:18



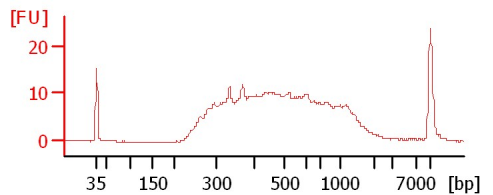
23a Ribo-Zero Lib 1:10



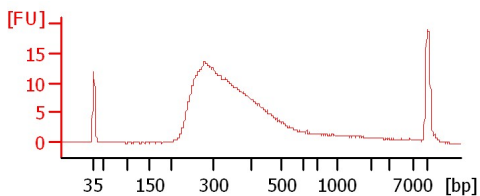
23b Ribo-Zero Lib 1:15



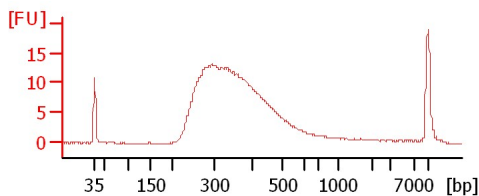
23c Ribo-Zero Lib 1:21



25a Ribo-Zero Lib 1:15



25b Ribo-Zero Lib 1:13



Assay Class: High Sensitivity DNA Assay
Data Path: C:\...ents and Settings\Bioanalyzer\2014-01-15\2014-01-15_001.xad

Created: 1/15/2014 3:04:55 PM
Modified: 1/15/2014 5:11:27 PM

Electrophoresis File Run Summary (Chip Summary)

Sample Name	Sample Comment	Rest. Digest	Status	Observation	Result Label	Result Color
03a Ribo-Zero Lib 1:12		<input type="checkbox"/>	✓			
03b Ribo-Zero Lib 1:20		<input type="checkbox"/>	✓			
03c Ribo-Zero Lib 1:17		<input type="checkbox"/>	✓			
05a Ribo-Zero Lib 1:13		<input type="checkbox"/>	✓			
05b Ribo-Zero Lib 1:15		<input type="checkbox"/>	✓			
05c Ribo-Zero Lib 1:18		<input type="checkbox"/>	✓			
23a Ribo-Zero Lib 1:10		<input type="checkbox"/>	✓			
23b Ribo-Zero Lib 1:15		<input type="checkbox"/>	✓			
23c Ribo-Zero Lib 1:21		<input type="checkbox"/>	✓			
25a Ribo-Zero Lib 1:15		<input type="checkbox"/>	✓			
25b Ribo-Zero Lib 1:13		<input type="checkbox"/>	✓			
Ladder		<input type="checkbox"/>	✓			

Chip Lot #

Reagent Kit Lot #

Chip Comments :

Assay Class: High Sensitivity DNA Assay
Data Path: C:\...ents and Settings\Bioanalyzer\2014-01-15\2014-01-15_001.xad

Created: 1/15/2014 3:04:55 PM
Modified: 1/15/2014 5:11:27 PM

Electrophoresis Assay Details

General Analysis Settings

Number of Available Sample and Ladder Wells (Max.) : 12
Minimum Visible Range [s] : 32
Maximum Visible Range [s] : 138
Start Analysis Time Range [s] : 33
End Analysis Time Range [s] : 137.5
Ladder Concentration [pg/μl] : 1950
Uses Standard Area for Ladder Fragments
Lower Marker Concentration [pg/μl] : 125
Upper Marker Concentration [pg/μl] : 75
Used Upper Marker for Quantitation
Standard Curve Fit is Point to Point
Show Data Aligned to Lower and Upper Marker

Integrator Settings

Integration Start Time [s] : 33.05
Integration End Time [s] : 137
Slope Threshold : 0.8
Height Threshold [FU] : 5
Area Threshold : 0.1
Width Threshold [s] : 0.6
Baseline Plateau [s] : 0.5

Filter Settings

Filter Width [s] : 0.5
Polynomial Order : 4

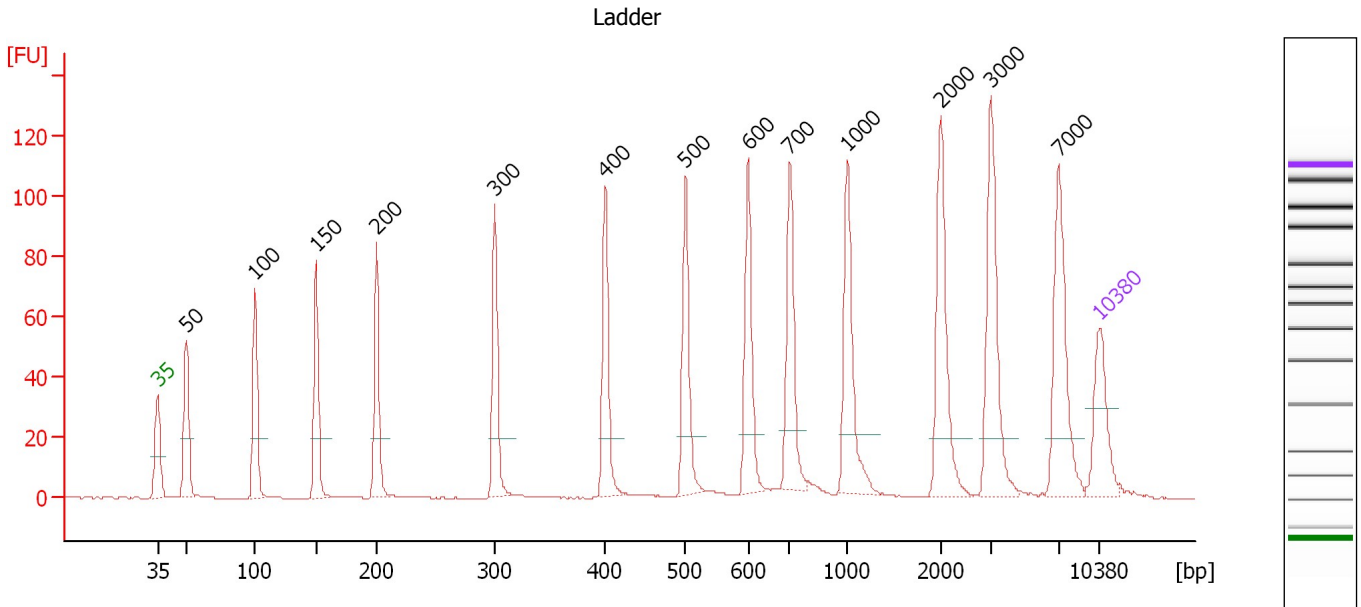
Ladder

Ladder Peak	Size	Area
1	35	160
2	50	210
3	100	208
4	150	221
5	200	242
6	300	270
7	400	305
8	500	306
9	600	336
10	700	321
11	1000	366
12	2000	413
13	3000	411
14	7000	400
15	10380	214

Assay Class: High Sensitivity DNA Assay
 Data Path: C:\...ents and Settings\Bioanalyzer\2014-01-15\2014-01-15_001.xad

Created: 1/15/2014 3:04:55 PM
 Modified: 1/15/2014 5:11:27 PM

Electropherogram Summary



Overall Results for Ladder

Noise: 0.1

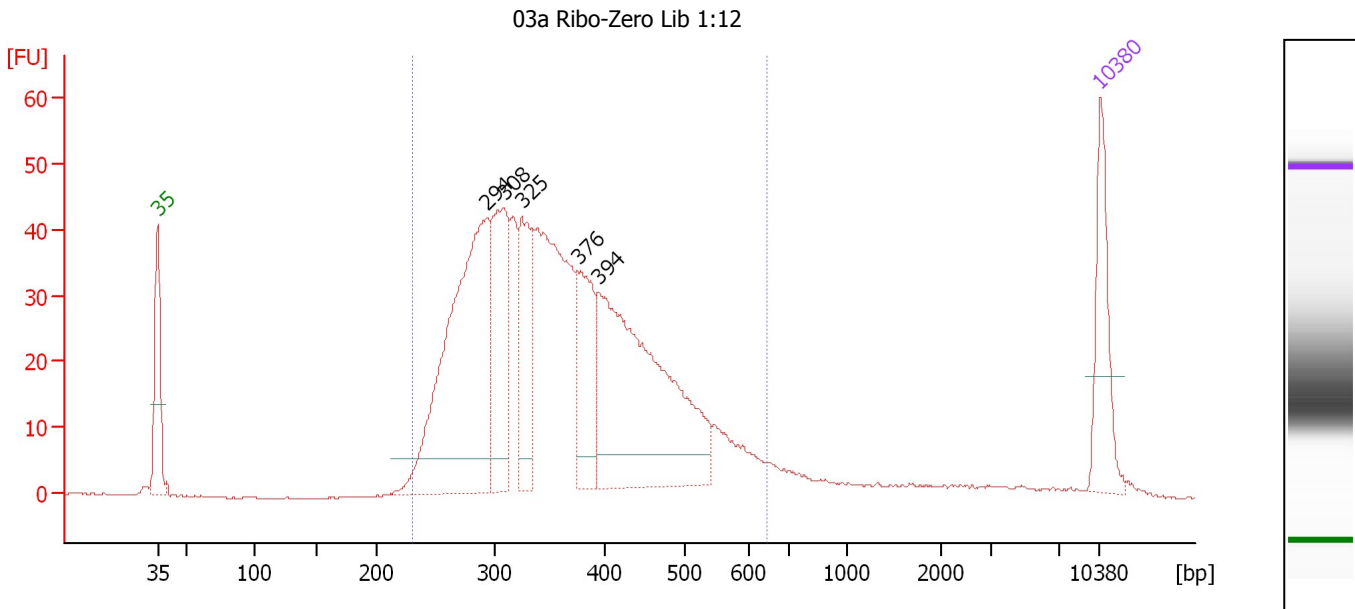
Peak table for Ladder

Peak	Aligned Migration Time [s]	Size [bp]	Conc. [pg/μl]	Molarity [pmol/l]	Observations
1	43.00	35	125.00	5,411.3	Lower Marker
2	45.11	50	150.00	4,545.5	Ladder Peak
3	50.27	100	150.00	2,272.7	Ladder Peak
4	54.77	150	150.00	1,515.2	Ladder Peak
5	59.27	200	150.00	1,136.4	Ladder Peak
6	68.05	300	150.00	757.6	Ladder Peak
7	76.24	400	150.00	568.2	Ladder Peak
8	82.20	500	150.00	454.5	Ladder Peak
9	86.87	600	150.00	378.8	Ladder Peak
10	89.96	700	150.00	324.7	Ladder Peak
11	94.24	1,000	150.00	227.3	Ladder Peak
12	101.18	2,000	150.00	113.6	Ladder Peak
13	104.92	3,000	150.00	75.8	Ladder Peak
14	109.96	7,000	150.00	32.5	Ladder Peak
15	113.00	10,380	75.00	10.9	Upper Marker

Assay Class: High Sensitivity DNA Assay
 Data Path: C:\...ents and Settings\Bioanalyzer\2014-01-15\2014-01-15_001.xad

Created: 1/15/2014 3:04:55 PM
 Modified: 1/15/2014 5:11:27 PM

Electropherogram Summary Continued ...



Overall Results for sample 1 : 03a Ribo-Zero Lib 1:12

Number of peaks found: 5 Corr. Area 1: 869.5
 Noise: 0.1

Peak table for sample 1 : 03a Ribo-Zero Lib 1:12

Peak	Aligned Migration Time [s]	Size [bp]	Conc. [pg/μl]	Molarity [pmol/l]	Observations
1	43.00	35	125.00	5,411.3	Lower Marker
2	67.48	294	467.95	2,415.5	
3	68.72	308	180.72	888.6	
4	70.06	325	121.63	567.8	
5	74.26	376	111.73	450.4	
6	75.77	394	416.76	1,601.6	
7	113.00	10,380	75.00	10.9	Upper Marker

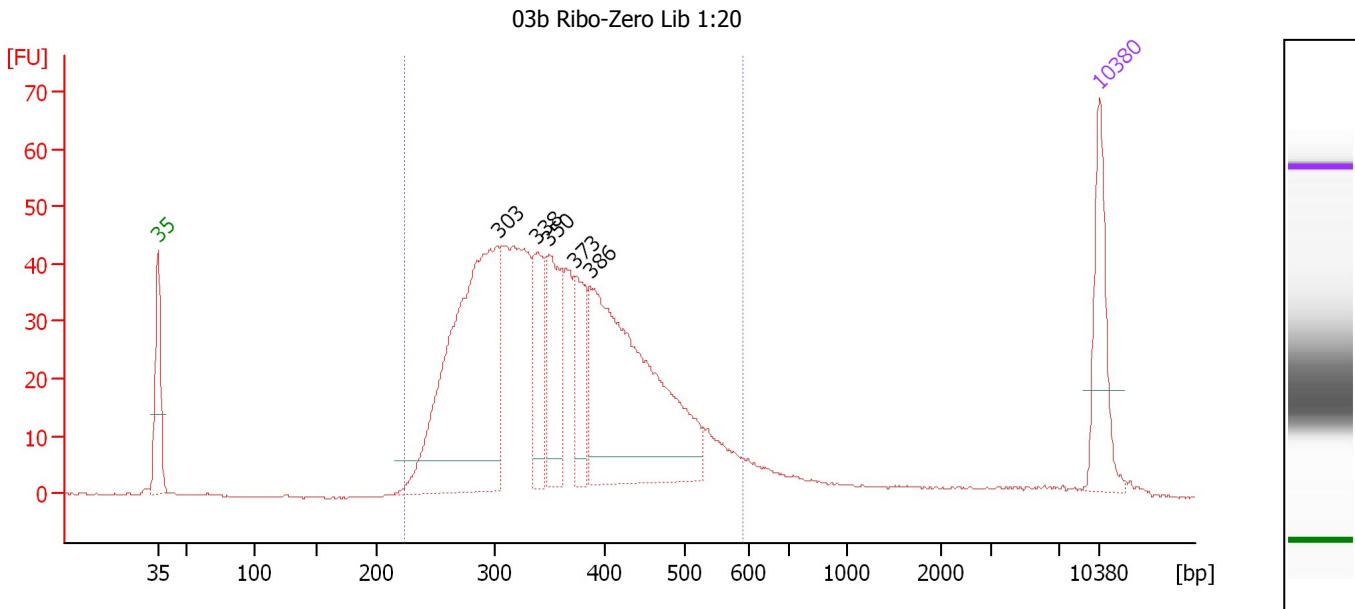
Region table for sample 1 : 03a Ribo-Zero Lib 1:12

From [bp]	To [bp]	Average Size [bp]	Molarity [pmol/l]	Conc. [pg/μl]	Corr. Area	% of Total	Size distribution in CV [%]	Color
230	646	367	8,214.6	1,856.53	869.5	93	23.4	Blue

Assay Class: High Sensitivity DNA Assay
 Data Path: C:\...ents and Settings\Bioanalyzer\2014-01-15\2014-01-15_001.xad

Created: 1/15/2014 3:04:55 PM
 Modified: 1/15/2014 5:11:27 PM

Electropherogram Summary Continued ...



Overall Results for sample 2 : 03b Ribo-Zero Lib 1:20

Number of peaks found: 5 Corr. Area 1: 897.1
 Noise: 0.1

Peak table for sample 2 : 03b Ribo-Zero Lib 1:20

Peak	Aligned Migration Time [s]	Size [bp]	Conc. [pg/μl]	Molarity [pmol/l]	Observations
1	43.00	35	125.00	5,411.3	Lower Marker
2	68.26	303	495.36	2,480.2	
3	71.16	338	98.54	441.7	
4	72.13	350	113.17	490.2	
5	74.00	373	75.66	307.6	
6	75.13	386	407.97	1,599.4	
7	113.00	10,380	75.00	10.9	Upper Marker

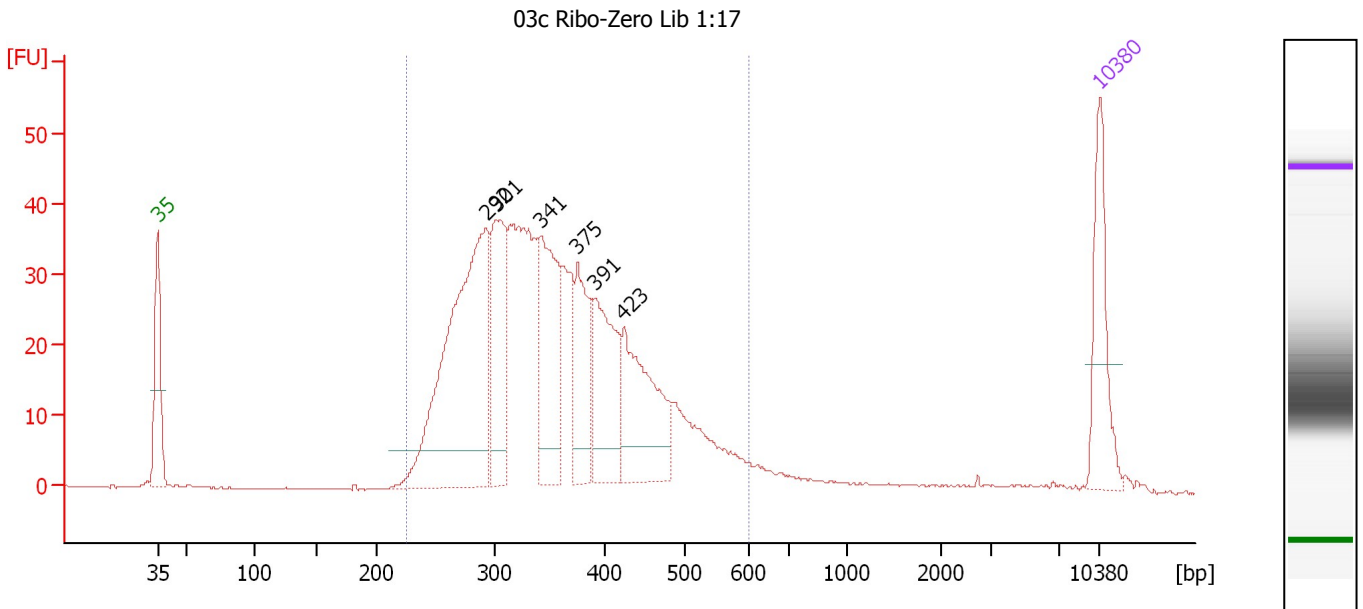
Region table for sample 2 : 03b Ribo-Zero Lib 1:20

From [bp]	To [bp]	Average Size [bp]	Molarity [pmol/l]	Conc. [pg/μl]	Corr. Area	% of Total	Size distribution in CV [%]	Color
223	593	363	7,506.8	1,689.01	897.1	92	21.7	Blue

Assay Class: High Sensitivity DNA Assay
 Data Path: C:\...ents and Settings\Bioanalyzer\2014-01-15\2014-01-15_001.xad

Created: 1/15/2014 3:04:55 PM
 Modified: 1/15/2014 5:11:27 PM

Electropherogram Summary Continued ...



Overall Results for sample 3 : 03c Ribo-Zero Lib 1:17

Number of peaks found: 6 Corr. Area 1: 693.7
 Noise: 0.1

Peak table for sample 3 : 03c Ribo-Zero Lib 1:17

Peak	Aligned Migration Time [s]	Size [bp]	Conc. [pg/μl]	Molarity [pmol/l]	Observations
1	43.00	35	125.00	5,411.3	Lower Marker
2	67.39	292	424.34	2,198.2	
3	68.16	301	147.35	741.0	
4	71.44	341	168.44	747.6	
5	74.17	375	102.97	416.3	
6	75.54	391	123.97	479.8	
7	77.62	423	149.55	535.5	
8	113.00	10,380	75.00	10.9	Upper Marker

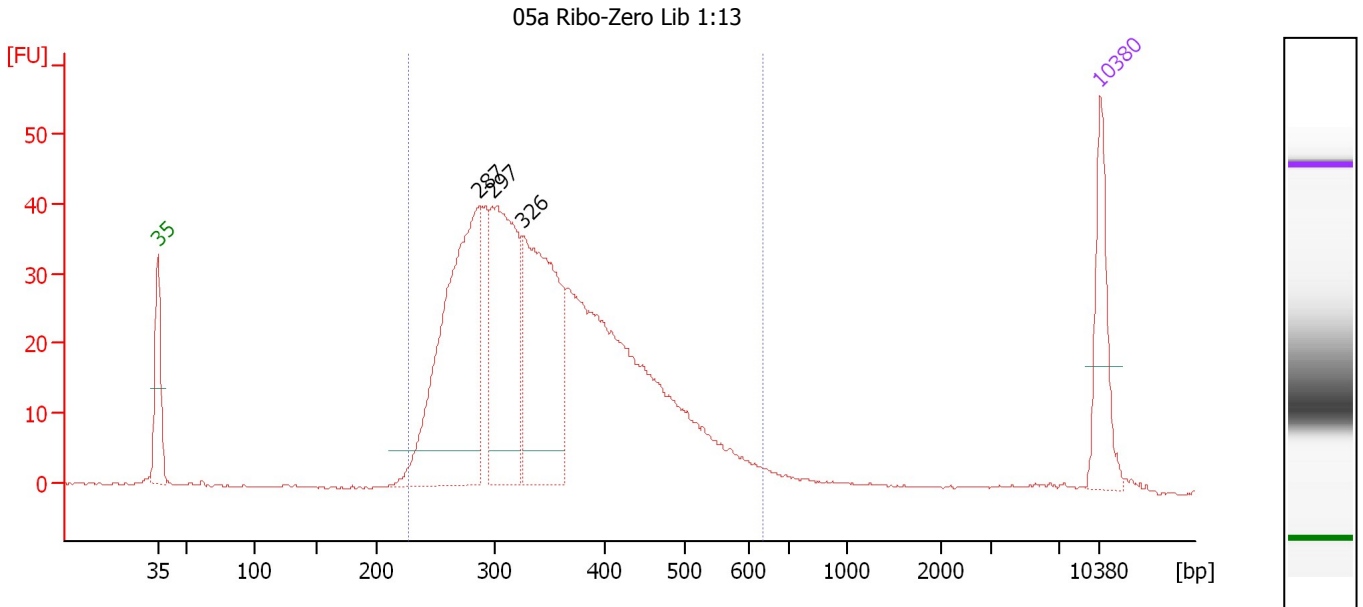
Region table for sample 3 : 03c Ribo-Zero Lib 1:17

From [bp]	To [bp]	Average Size [bp]	Molarity [pmol/l]	Conc. [pg/μl]	Corr. Area	% of Total	Size distribution in CV [%]	Color
225	600	356	7,169.3	1,590.32	693.7	98	21.1	Blue

Assay Class: High Sensitivity DNA Assay
 Data Path: C:\...ents and Settings\Bioanalyzer\2014-01-15\2014-01-15_001.xad

Created: 1/15/2014 3:04:55 PM
 Modified: 1/15/2014 5:11:27 PM

Electropherogram Summary Continued ...



Overall Results for sample 4 : 05a Ribo-Zero Lib 1:13

Number of peaks found: 3 Corr. Area 1: 743.7
 Noise: 0.1

Peak table for sample 4 : 05a Ribo-Zero Lib 1:13

Peak	Aligned Migration Time [s]	Size [bp]	Conc. [pg/μl]	Molarity [pmol/l]	Observations
1	43.00	35	125.00	5,411.3	Lower Marker
2	66.87	287	444.21	2,348.3	
3	67.82	297	301.57	1,536.3	
4	70.17	326	322.71	1,500.2	
5	113.00	10,380	75.00	10.9	Upper Marker

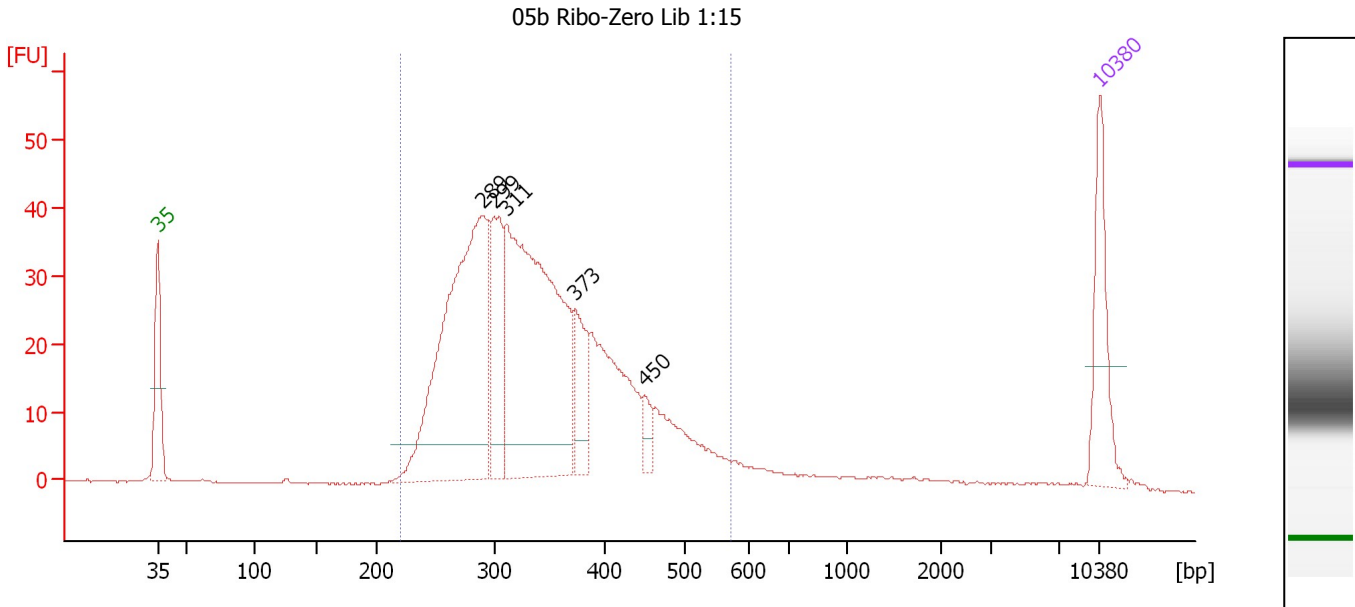
Region table for sample 4 : 05a Ribo-Zero Lib 1:13

From [bp]	To [bp]	Average Size [bp]	Molarity [pmol/l]	Conc. [pg/μl]	Corr. Area	% of Total	Size distribution in CV [%]	Color
227	636	355	7,903.0	1,733.64	743.7	95	23.0	Blue

Assay Class: High Sensitivity DNA Assay
 Data Path: C:\...ents and Settings\Bioanalyzer\2014-01-15\2014-01-15_001.xad

Created: 1/15/2014 3:04:55 PM
 Modified: 1/15/2014 5:11:27 PM

Electropherogram Summary Continued ...



Overall Results for sample 5 : 05b Ribo-Zero Lib 1:15

Number of peaks found: 5 Corr. Area 1: 663.6
 Noise: 0.1

Peak table for sample 5 : 05b Ribo-Zero Lib 1:15

Peak	Aligned Migration Time [s]	Size [bp]	Conc. [pg/μl]	Molarity [pmol/l]	Observations
1	43.00	35	125.00	5,411.3	Lower Marker
2	67.07	289	484.52	2,541.3	
3	67.98	299	127.60	646.1	
4	68.95	311	491.77	2,395.8	
5	74.02	373	67.40	273.9	
6	79.20	450	19.72	66.5	
7	113.00	10,380	75.00	10.9	Upper Marker

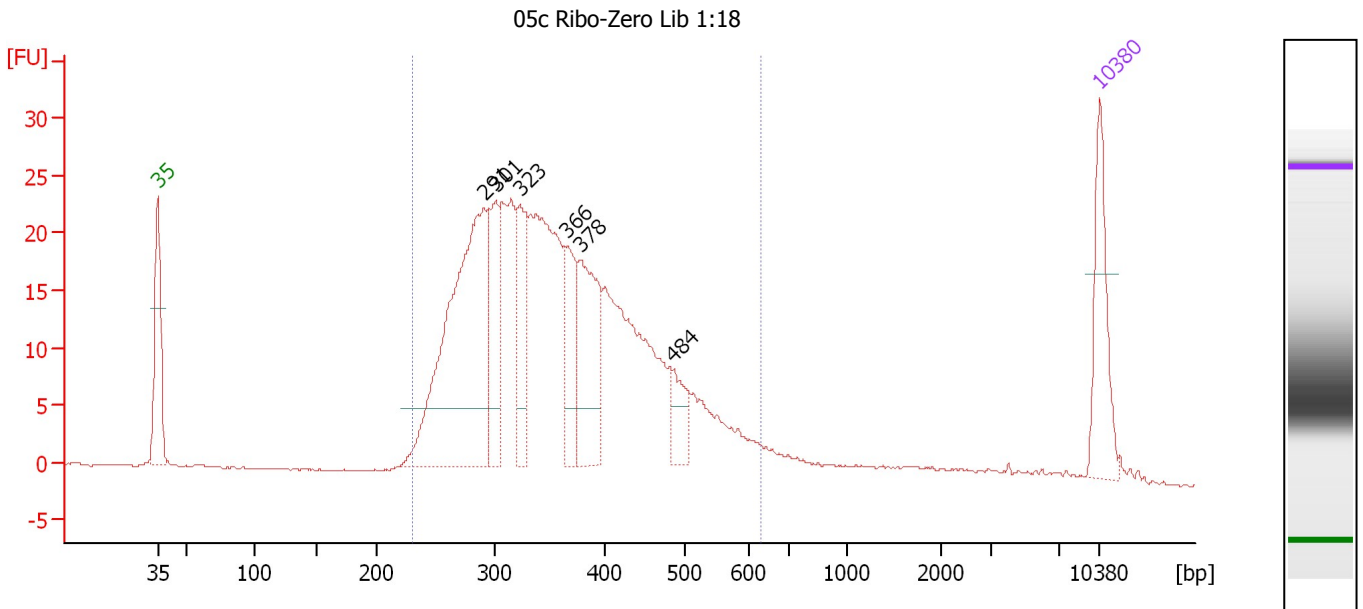
Region table for sample 5 : 05b Ribo-Zero Lib 1:15

From [bp]	To [bp]	Average Size [bp]	Molarity [pmol/l]	Conc. [pg/μl]	Corr. Area	% of Total	Size distribution in CV [%]	Color
220	574	344	7,187.2	1,543.98	663.6	93	20.8	Blue

Assay Class: High Sensitivity DNA Assay
 Data Path: C:\...ents and Settings\Bioanalyzer\2014-01-15\2014-01-15_001.xad

Created: 1/15/2014 3:04:55 PM
 Modified: 1/15/2014 5:11:27 PM

Electropherogram Summary Continued ...



Overall Results for sample 6 : 05c Ribo-Zero Lib 1:18

Number of peaks found: 6 Corr. Area 1: 459.8
 Noise: 0.1

Peak table for sample 6 : 05c Ribo-Zero Lib 1:18

Peak	Aligned Migration Time [s]	Size [bp]	Conc. [pg/μl]	Molarity [pmol/l]	Observations
1	43.00	35	125.00	5,411.3	Lower Marker
2	67.26	291	433.89	2,259.3	
3	68.12	301	103.72	522.3	
4	69.91	323	90.16	423.3	
5	73.44	366	78.39	324.7	
6	74.42	378	142.86	572.9	
7	81.23	484	42.71	133.8	
8	113.00	10,380	75.00	10.9	Upper Marker

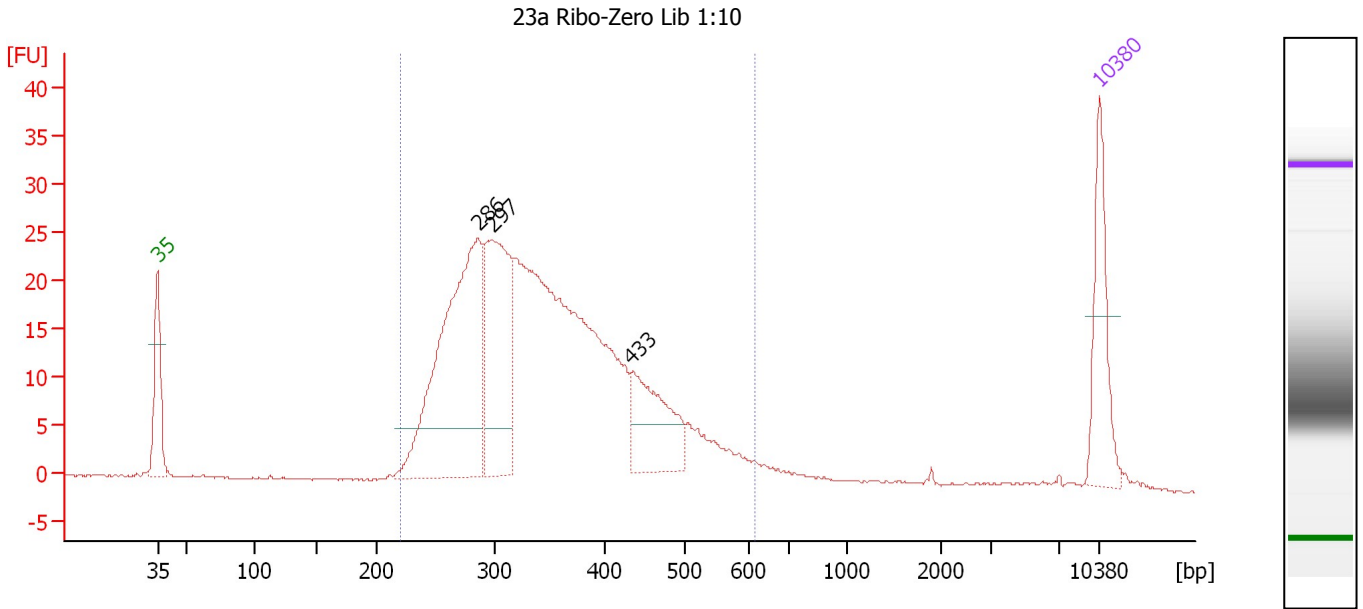
Region table for sample 6 : 05c Ribo-Zero Lib 1:18

From [bp]	To [bp]	Average Size [bp]	Molarity [pmol/l]	Conc. [pg/μl]	Corr. Area	% of Total	Size distribution in CV [%]	Color
230	630	365	8,122.7	1,829.31	459.8	91	22.8	Blue

Assay Class: High Sensitivity DNA Assay
 Data Path: C:\...ents and Settings\Bioanalyzer\2014-01-15\2014-01-15_001.xad

Created: 1/15/2014 3:04:55 PM
 Modified: 1/15/2014 5:11:27 PM

Electropherogram Summary Continued ...



Overall Results for sample 7 : 23a Ribo-Zero Lib 1:10

Number of peaks found: 3 Corr. Area 1: 452.5
 Noise: 0.1

Peak table for sample 7 : 23a Ribo-Zero Lib 1:10

Peak	Aligned Migration Time [s]	Size [bp]	Conc. [pg/μl]	Molarity [pmol/l]	Observations
1	43.00	35	125.00	5,411.3	Lower Marker
2	66.82	286	403.46	2,137.3	
3	67.82	297	219.38	1,117.8	
4	78.21	433	112.31	393.0	
5	113.00	10,380	75.00	10.9	Upper Marker

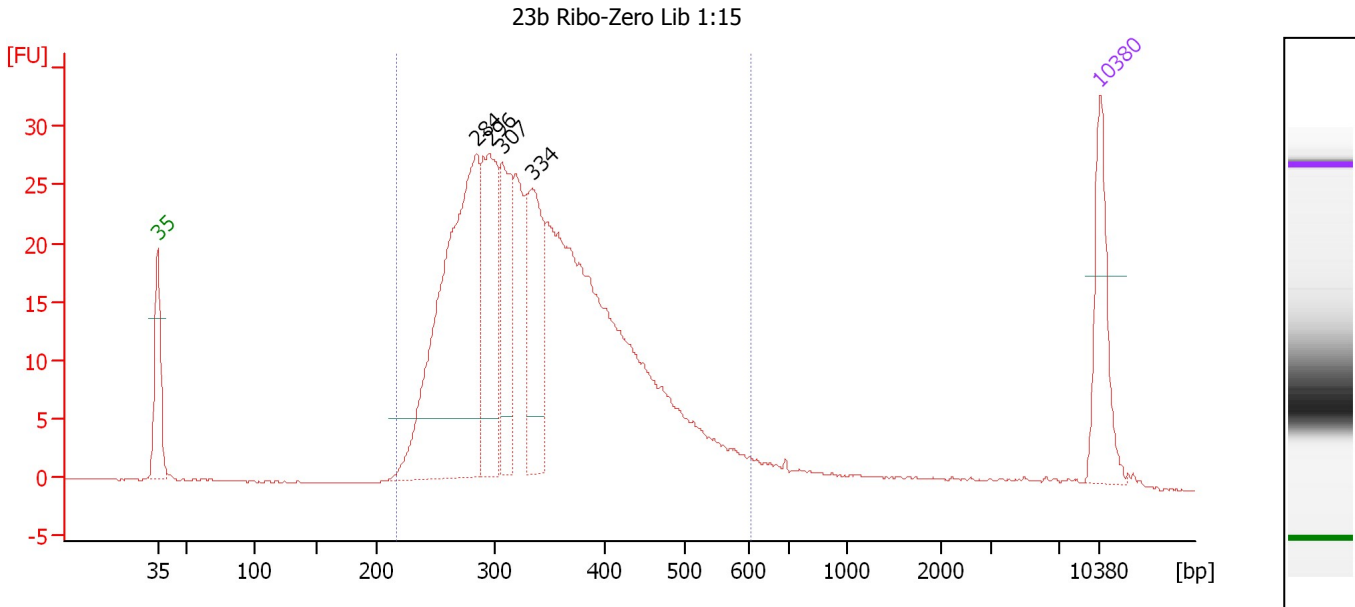
Region table for sample 7 : 23a Ribo-Zero Lib 1:10

From [bp]	To [bp]	Average Size [bp]	Molarity [pmol/l]	Conc. [pg/μl]	Corr. Area	% of Total	Size distribution in CV [%]	Color
221	617	352	6,846.7	1,491.54	452.5	95	22.8	Blue

Assay Class: High Sensitivity DNA Assay
 Data Path: C:\...ents and Settings\Bioanalyzer\2014-01-15\2014-01-15_001.xad

Created: 1/15/2014 3:04:55 PM
 Modified: 1/15/2014 5:11:27 PM

Electropherogram Summary Continued ...



Overall Results for sample 8 : 23b Ribo-Zero Lib 1:15

Number of peaks found: 4 Corr. Area 1: 489.3
 Noise: 0.1

Peak table for sample 8 : 23b Ribo-Zero Lib 1:15

Peak	Aligned Migration Time [s]	Size [bp]	Conc. [pg/μl]	Molarity [pmol/l]	Observations
1	43.00	35	125.00	5,411.3	Lower Marker
2	66.67	284	495.90	2,643.2	
3	67.67	296	187.40	960.3	
4	68.62	307	111.68	551.3	
5	70.86	334	160.84	729.0	
6	113.00	10,380	75.00	10.9	Upper Marker

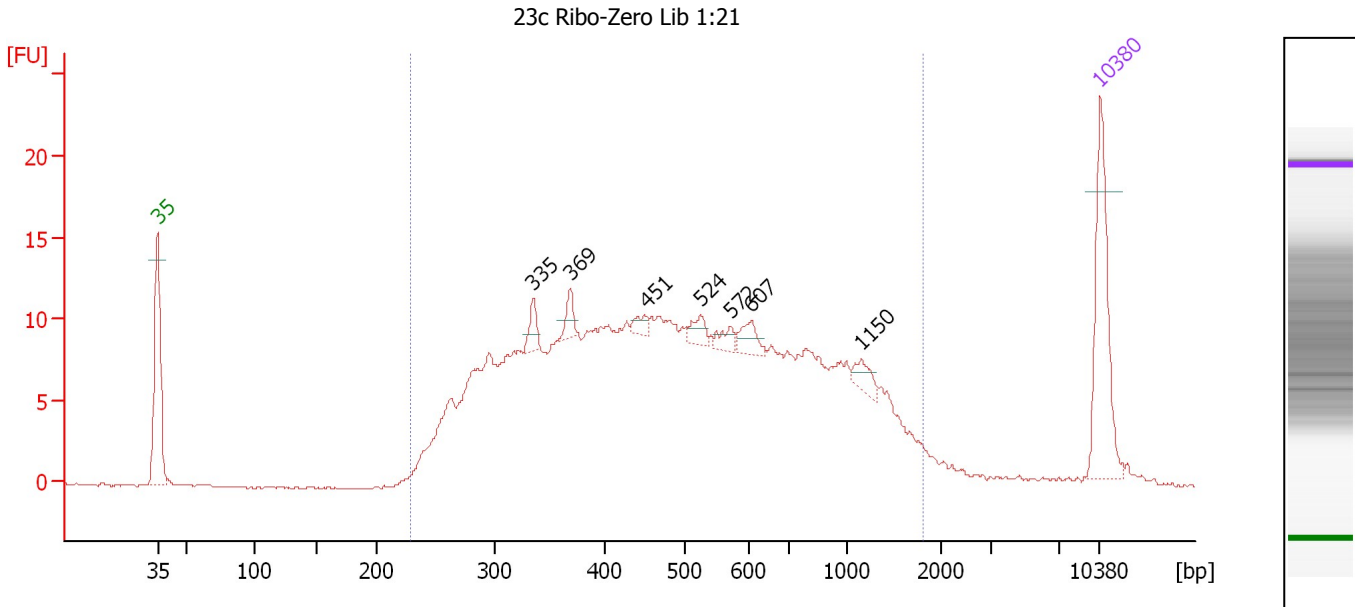
Region table for sample 8 : 23b Ribo-Zero Lib 1:15

From [bp]	To [bp]	Average Size [bp]	Molarity [pmol/l]	Conc. [pg/μl]	Corr. Area	% of Total	Size distribution in CV [%]	Color
218	605	347	8,703.9	1,875.83	489.3	93	22.1	Blue

Assay Class: High Sensitivity DNA Assay
 Data Path: C:\...ents and Settings\Bioanalyzer\2014-01-15\2014-01-15_001.xad

Created: 1/15/2014 3:04:55 PM
 Modified: 1/15/2014 5:11:27 PM

Electropherogram Summary Continued ...



Setpoint Deviations for sample 9 : 23c Ribo-Zero Lib 1:21

Height Threshold [FU] : 1 Baseline Plateau [s] : 0.6

Overall Results for sample 9 : 23c Ribo-Zero Lib 1:21

Number of peaks found: 7 Corr. Area 1: 350.7
 Noise: 0.1

Peak table for sample 9 : 23c Ribo-Zero Lib 1:21

Peak	Aligned Migration Time [s]	Size [bp]	Conc. [pg/μl]	Molarity [pmol/l]	Observations
1	43.00	35	125.00	5,411.3	Lower Marker
2	70.91	335	14.70	66.5	
3	73.67	369	12.67	52.1	
4	79.27	451	7.93	26.7	
5	83.33	524	12.17	35.2	
6	85.57	572	9.33	24.7	
7	87.10	607	14.01	34.9	
8	95.28	1,150	10.66	14.0	
9	113.00	10,380	75.00	10.9	Upper Marker

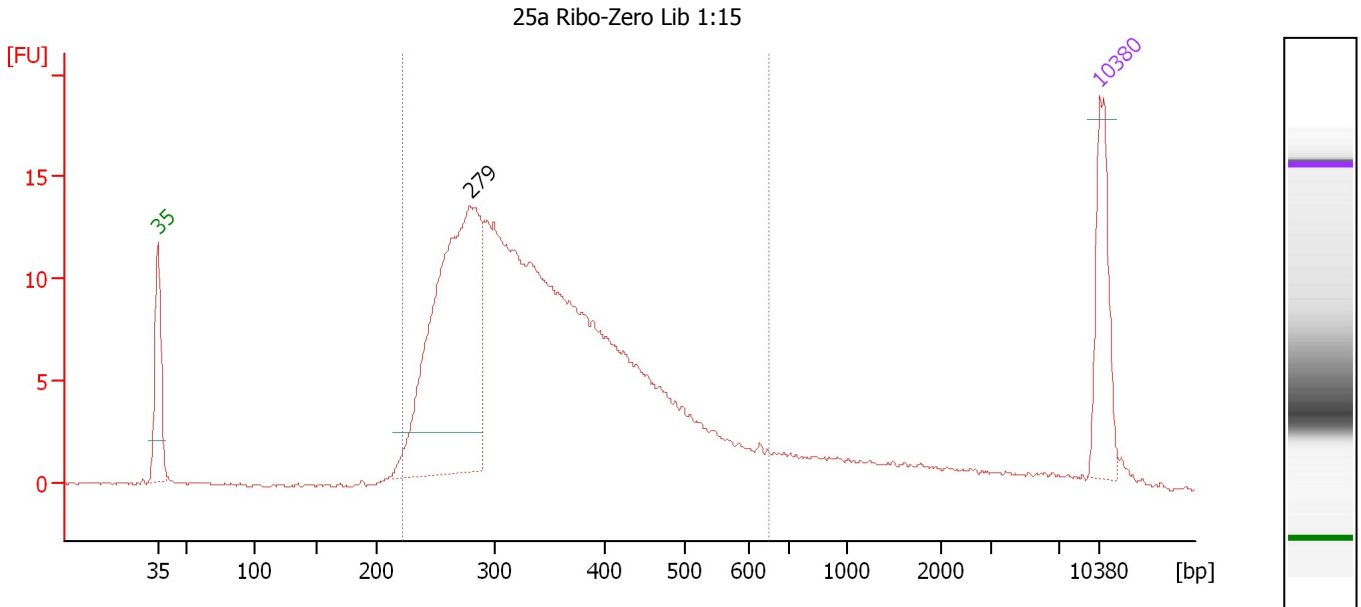
Region table for sample 9 : 23c Ribo-Zero Lib 1:21

From [bp]	To [bp]	Average Size [bp]	Molarity [pmol/l]	Conc. [pg/μl]	Corr. Area	% of Total	Size distribution in CV [%]	Color
229	1,817	579	6,425.6	1,848.99	350.7	94	54.8	Blue

Assay Class: High Sensitivity DNA Assay
 Data Path: C:\...ents and Settings\Bioanalyzer\2014-01-15\2014-01-15_001.xad

Created: 1/15/2014 3:04:55 PM
 Modified: 1/15/2014 5:11:27 PM

Electropherogram Summary Continued ...



Setpoint Deviations for sample 10 : 25a Ribo-Zero Lib 1:15

Height Threshold [FU] : 2 Baseline Plateau [s] : 0.8

Overall Results for sample 10 : 25a Ribo-Zero Lib 1:15

Number of peaks found: 1 Corr. Area 1: 251.7
 Noise: 0.1

Peak table for sample 10 : 25a Ribo-Zero Lib 1:15

Peak	Aligned Migration Time [s]	Size [bp]	Conc. [pg/μl]	Molarity [pmol/l]	Observations
1	43.00	35	125.00	5,411.3	Lower Marker
2	66.24	279	506.98	2,749.9	
3	113.00	10,380	75.00	10.9	Upper Marker

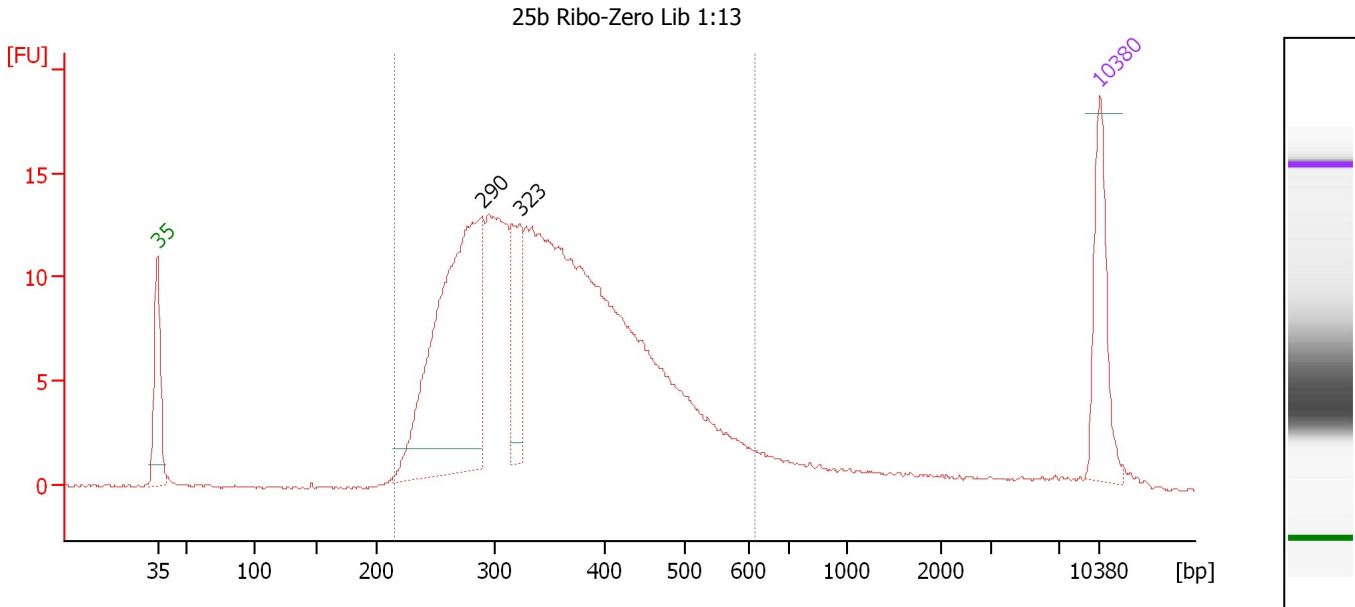
Region table for sample 10 : 25a Ribo-Zero Lib 1:15

From [bp]	To [bp]	Average Size [bp]	Molarity [pmol/l]	Conc. [pg/μl]	Corr. Area	% of Total	Size distribution in CV [%]	Color
221	649	353	7,798.8	1,678.36	251.7	87	25.3	Blue

Assay Class: High Sensitivity DNA Assay
 Data Path: C:\...ents and Settings\Bioanalyzer\2014-01-15\2014-01-15_001.xad

Created: 1/15/2014 3:04:55 PM
 Modified: 1/15/2014 5:11:27 PM

Electropherogram Summary Continued ...



Setpoint Deviations for sample 11 : 25b Ribo-Zero Lib 1:13

Height Threshold [FU] : 1 Baseline Plateau [s] : 0.8

Overall Results for sample 11 : 25b Ribo-Zero Lib 1:13

Number of peaks found: 2 Corr. Area 1: 268.4
 Noise: 0.1

Peak table for sample 11 : 25b Ribo-Zero Lib 1:13

Peak	Aligned Migration Time [s]	Size [bp]	Conc. [pg/μl]	Molarity [pmol/l]	Observations
1	43.00	35	125.00	5,411.3	Lower Marker
2	67.15	290	459.90	2,405.1	
3	69.94	323	76.89	360.6	
4	113.00	10,380	75.00	10.9	Upper Marker

Region table for sample 11 : 25b Ribo-Zero Lib 1:13

From [bp]	To [bp]	Average Size [bp]	Molarity [pmol/l]	Conc. [pg/μl]	Corr. Area	% of Total	Size distribution in CV [%]	Color
216	617	358	8,341.3	1,831.77	268.4	90	23.6	Blue

Assay Class: High Sensitivity DNA Assay
Data Path: C:\...ents and Settings\Bioanalyzer\2014-01-15\2014-01-15_001.xad

Created: 1/15/2014 3:04:55 PM
Modified: 1/15/2014 5:11:27 PM

Gel Image

