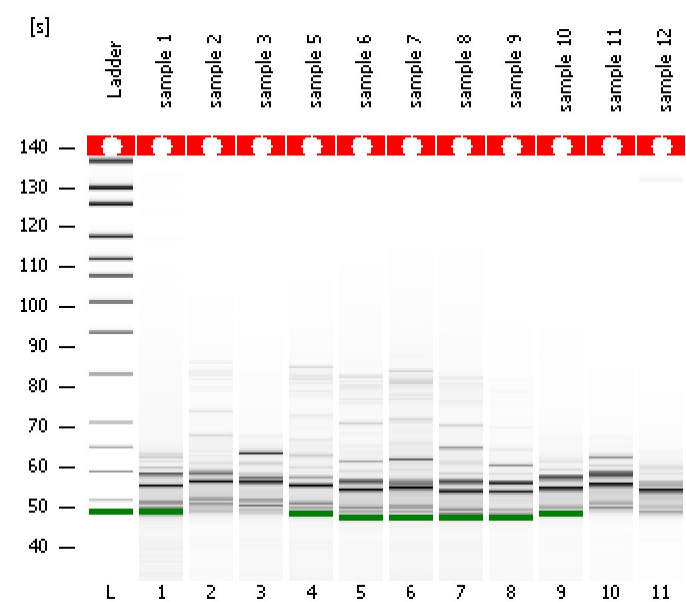


Assay Class: High Sensitivity DNA Assay
Data Path: C:\...ents and Settings\Bioanalyzer\2014-01-16\2014-01-16_003.xad

Created: 1/16/2014 12:23:40 PM
Modified: 1/16/2014 1:04:08 PM

Electrophoresis File Run Summary



Instrument Information:

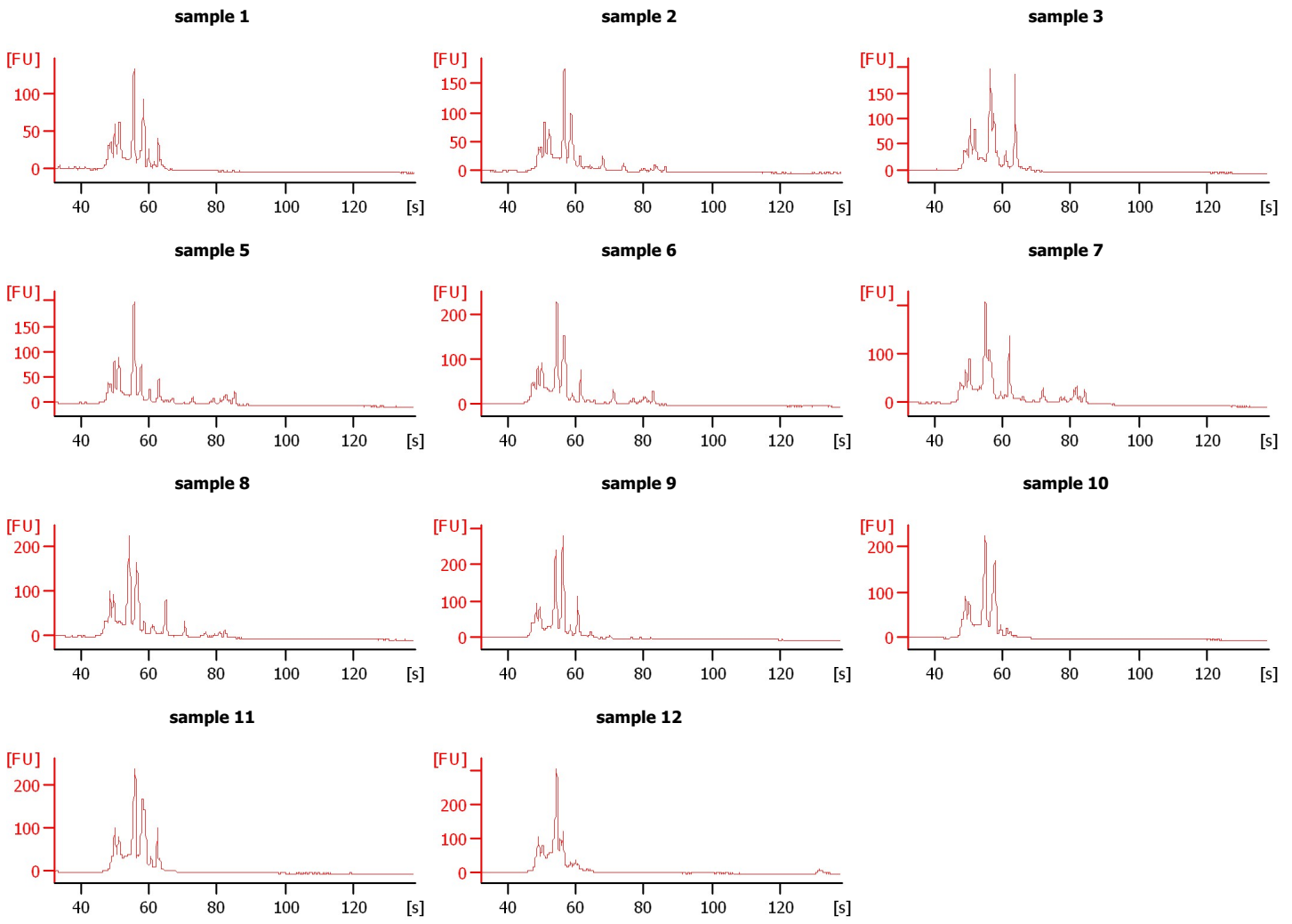
Instrument Name: DE13701086 Firmware: C.01.069
Serial#: DE13701086 Type: G2938B

Assay Information:

Assay Origin Path: C:\Program Files\Agilent\2100 bioanalyzer\2100 expert\assays\dsDNA\High Sensitivity DNA.xsy
Assay Class: High Sensitivity DNA Assay
Version: 1.03
Assay Comments: Copyright © 2003-2010 Agilent Technologies

Chip Information:

Chip Lot #: Reagent Kit Lot #: Chip Comments:



Assay Class: High Sensitivity DNA Assay
 Data Path: C:\...ents and Settings\Bioanalyzer\2014-01-16\2014-01-16_003.xad

Created: 1/16/2014 12:23:40 PM
 Modified: 1/16/2014 1:04:08 PM

Electrophoresis File Run Summary (Chip Summary)

Sample Name	Sample Comment	Rest. Digest	Status	Observation	Result Label	Result Color
sample 1		<input type="checkbox"/>	✓			
sample 2		<input type="checkbox"/>	✓			
sample 3		<input type="checkbox"/>	✓			
sample 5		<input type="checkbox"/>	✓			
sample 6		<input type="checkbox"/>	✓			
sample 7		<input type="checkbox"/>	✓			
sample 8		<input type="checkbox"/>	✓			
sample 9		<input type="checkbox"/>	✓			
sample 10		<input type="checkbox"/>	✓			
sample 11		<input type="checkbox"/>	✓			
sample 12		<input type="checkbox"/>	✓			
Ladder		<input type="checkbox"/>	✓			

Chip Lot #

Reagent Kit Lot #

Chip Comments :

Assay Class: High Sensitivity DNA Assay
Data Path: C:\...ents and Settings\Bioanalyzer\2014-01-16\2014-01-16_003.xad

Created: 1/16/2014 12:23:40 PM
Modified: 1/16/2014 1:04:08 PM

Electrophoresis Assay Details

General Analysis Settings

Number of Available Sample and Ladder Wells (Max.) : 12
Minimum Visible Range [s] : 32
Maximum Visible Range [s] : 138
Start Analysis Time Range [s] : 33
End Analysis Time Range [s] : 137.5
Ladder Concentration [pg/μl] : 1950
Uses Standard Area for Ladder Fragments
Lower Marker Concentration [pg/μl] : 125
Upper Marker Concentration [pg/μl] : 75
Used Upper Marker for Quantitation
Standard Curve Fit is Point to Point
Show Data Aligned to Lower and Upper Marker

Integrator Settings

Integration Start Time [s] : 33.05
Integration End Time [s] : 137
Slope Threshold : 0.8
Height Threshold [FU] : 5
Area Threshold : 0.1
Width Threshold [s] : 0.6
Baseline Plateau [s] : 0.5

Filter Settings

Filter Width [s] : 0.5
Polynomial Order : 4

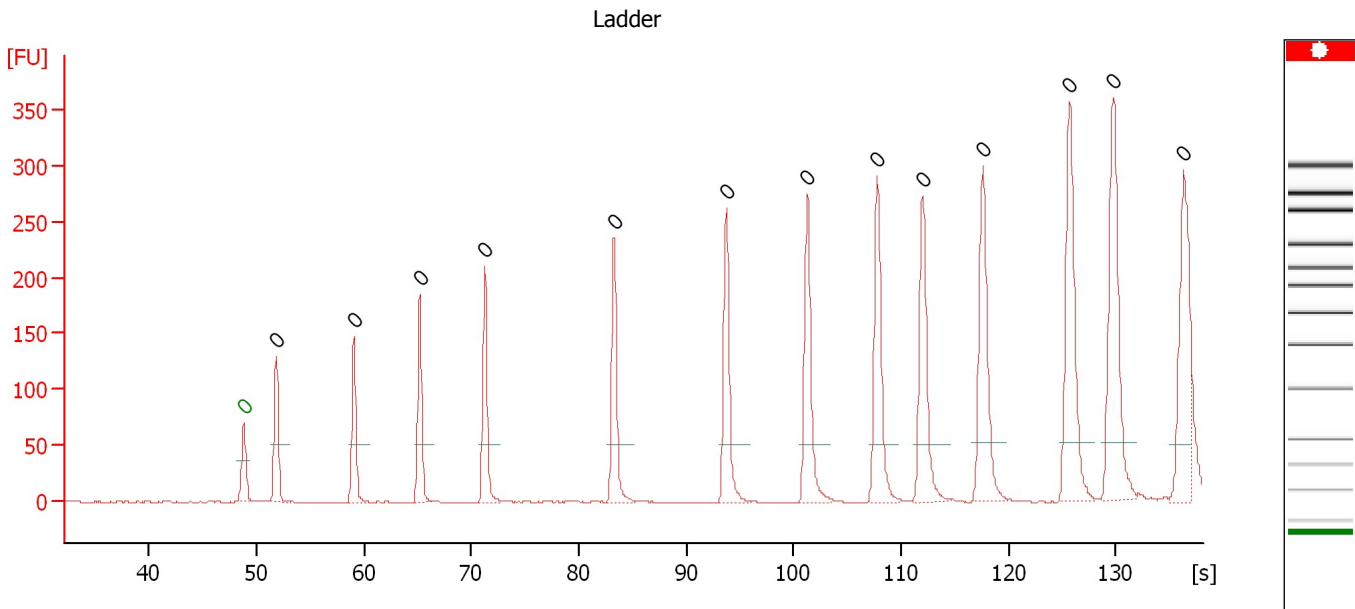
Ladder

Ladder Peak	Size	Area
1	35	160
2	50	210
3	100	208
4	150	221
5	200	242
6	300	270
7	400	305
8	500	306
9	600	336
10	700	321
11	1000	366
12	2000	413
13	3000	411
14	7000	400
15	10380	214

Assay Class: High Sensitivity DNA Assay
 Data Path: C:\...ents and Settings\Bioanalyzer\2014-01-16\2014-01-16_003.xad

Created: 1/16/2014 12:23:40 PM
 Modified: 1/16/2014 1:04:08 PM

Electropherogram Summary



Overall Results for Ladder

Noise: 0.2

Peak table for Ladder

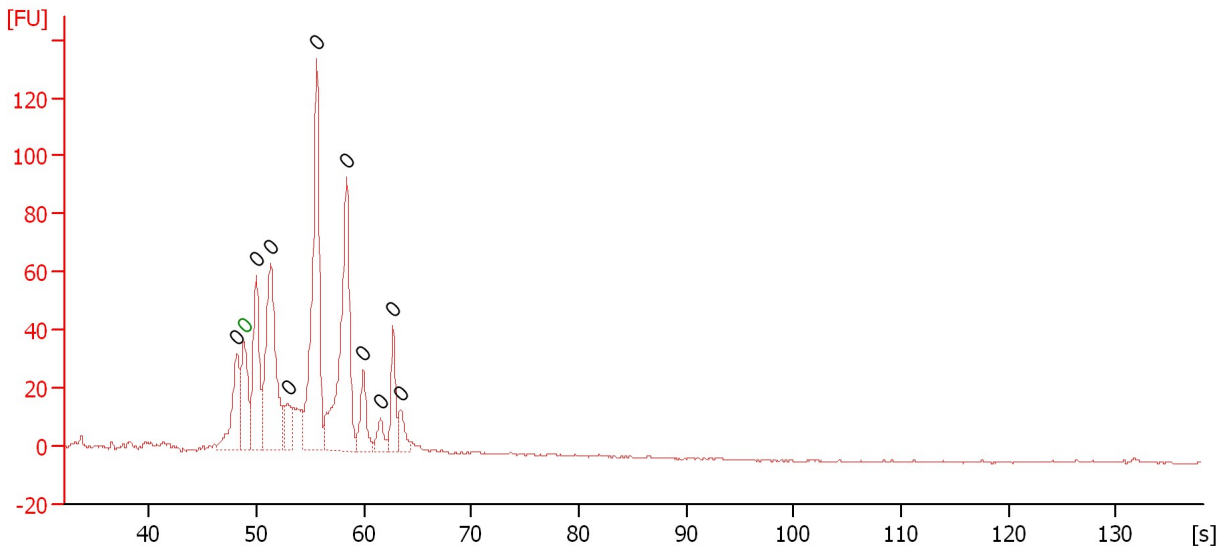
Peak	Aligned Migration Time [s]	Size [bp]	Conc. [pg/μl]	Molarity [pmol/l]	Observations
1	48.80	0	0.00	0.0	Lower Marker
2	51.85	0	0.00	0.0	Ladder Peak
3	59.05	0	0.00	0.0	Ladder Peak
4	65.20	0	0.00	0.0	Ladder Peak
5	71.25	0	0.00	0.0	Ladder Peak
6	83.30	0	0.00	0.0	Ladder Peak
7	93.75	0	0.00	0.0	Ladder Peak
8	101.30	0	0.00	0.0	Ladder Peak
9	107.80	0	0.00	0.0	Ladder Peak
10	112.00	0	0.00	0.0	Ladder Peak
11	117.60	0	0.00	0.0	Ladder Peak
12	125.70	0	0.00	0.0	Ladder Peak
13	129.80	0	0.00	0.0	Ladder Peak
14	136.30	0	0.00	0.0	Ladder Peak

Assay Class: High Sensitivity DNA Assay
 Data Path: C:\...ents and Settings\Bioanalyzer\2014-01-16\2014-01-16_003.xad

Created: 1/16/2014 12:23:40 PM
 Modified: 1/16/2014 1:04:08 PM

Electropherogram Summary Continued ...

sample 1



Overall Results for sample 1 : sample 1

Number of peaks found: 10 Noise: 0.3

Peak table for sample 1 : sample 1

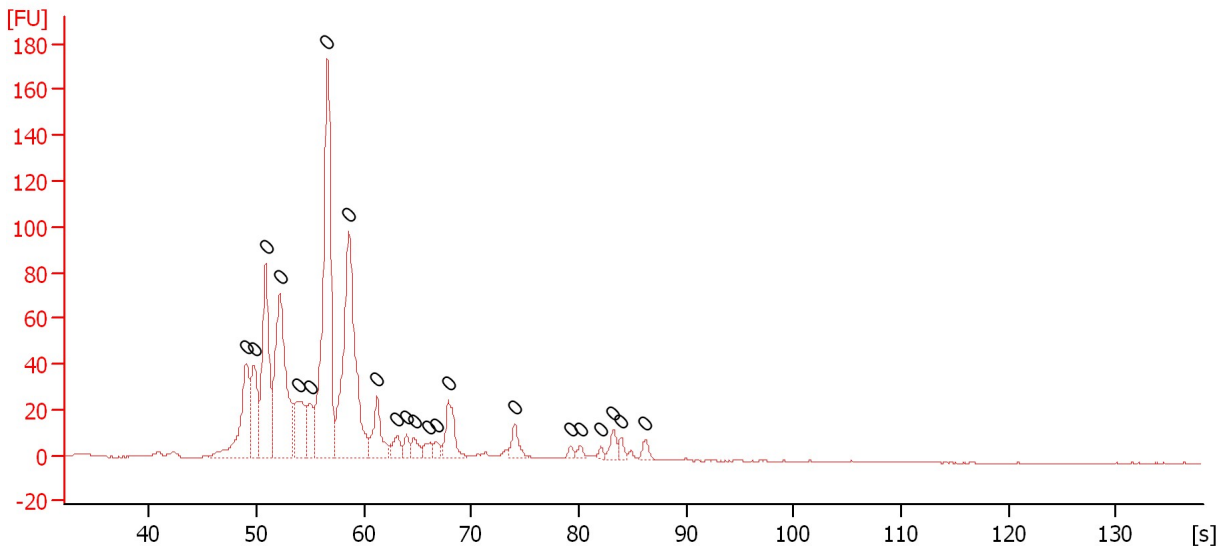
Peak	Aligned Migration Time [s]	Size [bp]	Conc. [pg/μl]	Molarity [pmol/l]	Observations
1	48.15	0	0.00	0.0	
2	48.85	0	0.00	0.0	Lower Marker
3	49.95	0	0.00	0.0	
4	51.30	0	0.00	0.0	
5	52.90	0	0.00	0.0	
6	55.60	0	0.00	0.0	
7	58.40	0	0.00	0.0	
8	59.95	0	0.00	0.0	
9	61.55	0	0.00	0.0	
10	62.70	0	0.00	0.0	
11	63.40	0	0.00	0.0	

Assay Class: High Sensitivity DNA Assay
 Data Path: C:\...ents and Settings\Bioanalyzer\2014-01-16\2014-01-16_003.xad

Created: 1/16/2014 12:23:40 PM
 Modified: 1/16/2014 1:04:08 PM

Electropherogram Summary Continued ...

sample 2



Overall Results for sample 2 : sample 2

Number of peaks found: 0 Noise: 0.2

Peak table for sample 2 : sample 2

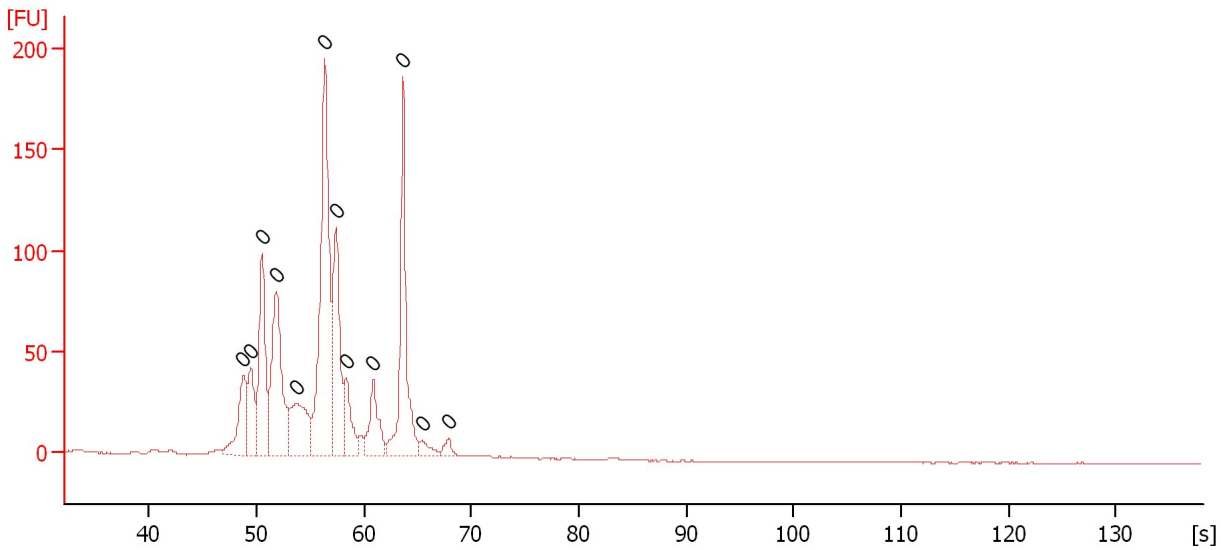
Peak	Aligned Migration Time [s]	Size [bp]	Conc. [pg/μl]	Molarity [pmol/l]	Observations
1	49.05	0	0.00	0.0	
2	49.75	0	0.00	0.0	
3	50.85	0	0.00	0.0	
4	52.15	0	0.00	0.0	
5	53.90	0	0.00	0.0	
6	55.00	0	0.00	0.0	
7	56.60	0	0.00	0.0	
8	58.60	0	0.00	0.0	
9	61.20	0	0.00	0.0	
10	63.10	0	0.00	0.0	
11	63.95	0	0.00	0.0	
12	64.70	0	0.00	0.0	
13	66.10	0	0.00	0.0	
14	66.75	0	0.00	0.0	
15	67.85	0	0.00	0.0	
16	74.00	0	0.00	0.0	
17	79.20	0	0.00	0.0	
18	80.15	0	0.00	0.0	
19	82.05	0	0.00	0.0	
20	83.20	0	0.00	0.0	
21	83.90	0	0.00	0.0	
22	86.20	0	0.00	0.0	

Assay Class: High Sensitivity DNA Assay
Data Path: C:\...ents and Settings\Bioanalyzer\2014-01-16\2014-01-16_003.xad

Created: 1/16/2014 12:23:40 PM
Modified: 1/16/2014 1:04:08 PM

Electropherogram Summary Continued ...

sample 3



Overall Results for sample 3 : sample 3

Number of peaks found: 0 Noise: 0.2

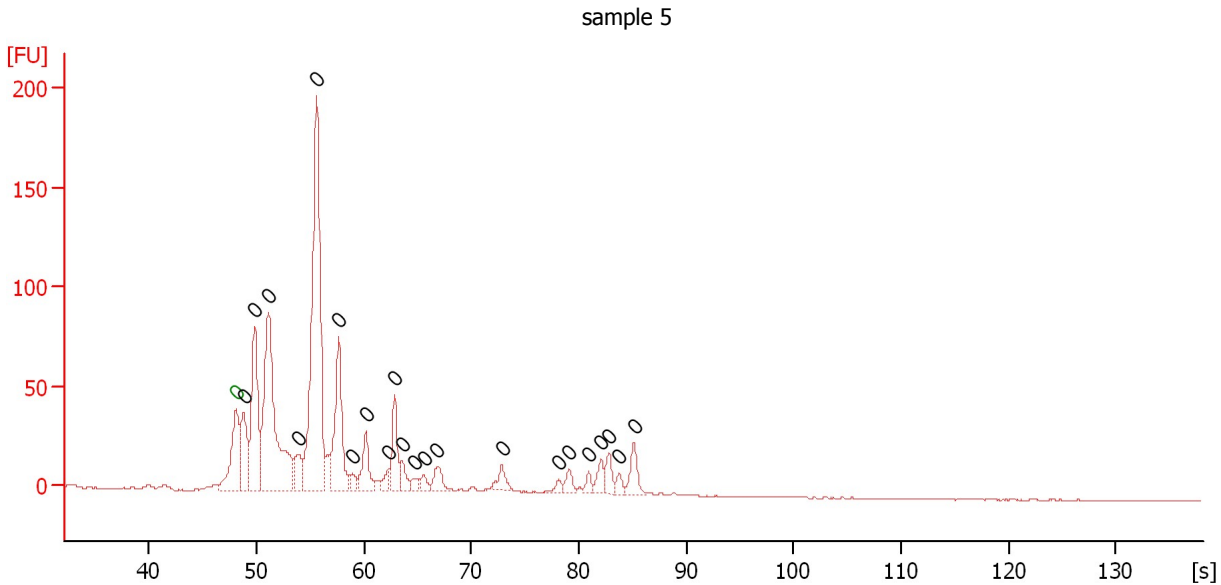
Peak table for sample 3 : sample 3

Peak	Aligned Migration Time [s]	Size [bp]	Conc. [pg/μl]	Molarity [pmol/l]	Observations
1	48.75	0	0.00	0.0	
2	49.45	0	0.00	0.0	
3	50.50	0	0.00	0.0	
4	51.85	0	0.00	0.0	
5	53.70	0	0.00	0.0	
6	56.35	0	0.00	0.0	
7	57.40	0	0.00	0.0	
8	58.35	0	0.00	0.0	
9	60.85	0	0.00	0.0	
10	63.65	0	0.00	0.0	
11	65.40	0	0.00	0.0	
12	67.90	0	0.00	0.0	

Assay Class: High Sensitivity DNA Assay
 Data Path: C:\...ents and Settings\Bioanalyzer\2014-01-16\2014-01-16_003.xad

Created: 1/16/2014 12:23:40 PM
 Modified: 1/16/2014 1:04:08 PM

Electropherogram Summary Continued ...



Overall Results for sample 4 : sample 5

Number of peaks found: 22 Noise: 0.2

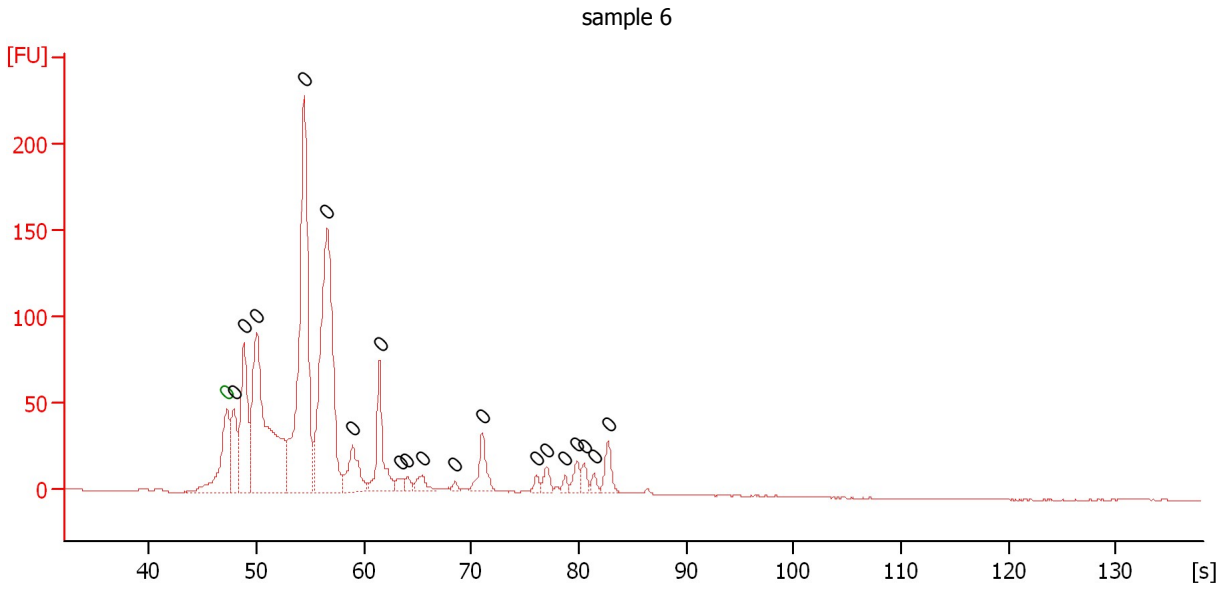
Peak table for sample 4 : sample 5

Peak	Aligned Migration Time [s]	Size [bp]	Conc. [pg/μl]	Molarity [pmol/l]	Observations
1	48.10	0	0.00	0.0	Lower Marker
2	48.80	0	0.00	0.0	
3	49.80	0	0.00	0.0	
4	51.10	0	0.00	0.0	
5	53.90	0	0.00	0.0	
6	55.60	0	0.00	0.0	
7	57.65	0	0.00	0.0	
8	58.95	0	0.00	0.0	
9	60.15	0	0.00	0.0	
10	62.30	0	0.00	0.0	
11	62.85	0	0.00	0.0	
12	63.50	0	0.00	0.0	
13	64.70	0	0.00	0.0	
14	65.55	0	0.00	0.0	
15	66.80	0	0.00	0.0	
16	72.85	0	0.00	0.0	
17	78.15	0	0.00	0.0	
18	79.15	0	0.00	0.0	
19	80.90	0	0.00	0.0	
20	82.05	0	0.00	0.0	
21	82.80	0	0.00	0.0	
22	83.75	0	0.00	0.0	
23	85.15	0	0.00	0.0	

Assay Class: High Sensitivity DNA Assay
 Data Path: C:\...ents and Settings\Bioanalyzer\2014-01-16\2014-01-16_003.xad

Created: 1/16/2014 12:23:40 PM
 Modified: 1/16/2014 1:04:08 PM

Electropherogram Summary Continued ...



Overall Results for sample 5 : sample 6

Number of peaks found: 19 Noise: 0.1

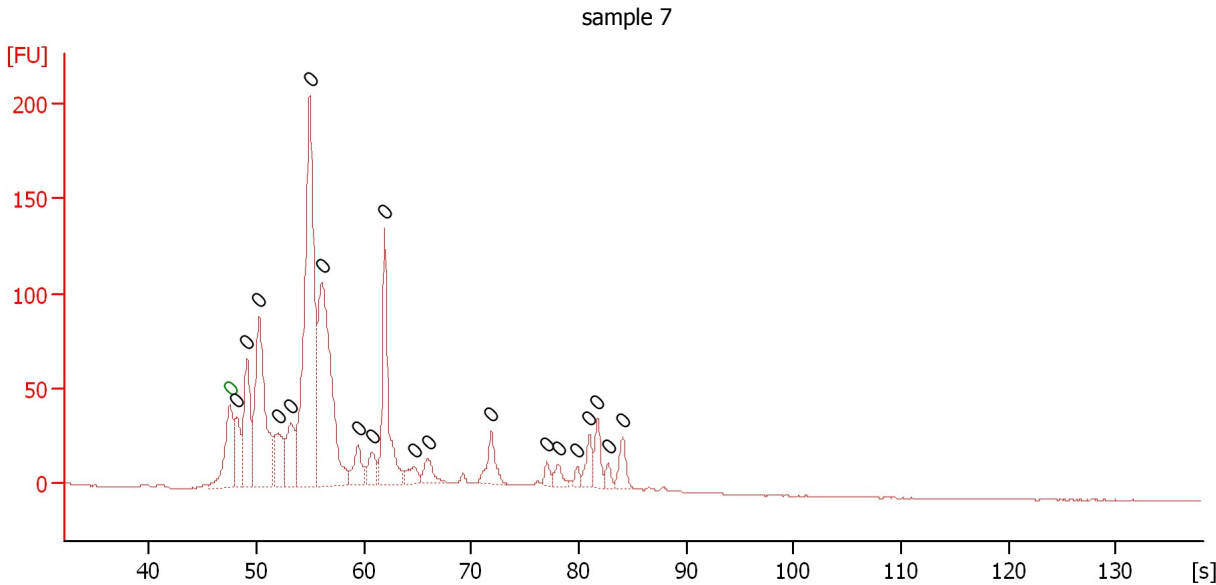
Peak table for sample 5 : sample 6

Peak	Aligned Migration Time [s]	Size [bp]	Conc. [pg/μl]	Molarity [pmol/l]	Observations
1	47.20	0	0.00	0.0	Lower Marker
2	47.85	0	0.00	0.0	
3	48.85	0	0.00	0.0	
4	50.00	0	0.00	0.0	
5	54.45	0	0.00	0.0	
6	56.60	0	0.00	0.0	
7	58.95	0	0.00	0.0	
8	61.45	0	0.00	0.0	
9	63.45	0	0.00	0.0	
10	64.05	0	0.00	0.0	
11	65.40	0	0.00	0.0	
12	68.45	0	0.00	0.0	
13	71.00	0	0.00	0.0	
14	76.05	0	0.00	0.0	
15	77.05	0	0.00	0.0	
16	78.75	0	0.00	0.0	
17	79.85	0	0.00	0.0	
18	80.50	0	0.00	0.0	
19	81.45	0	0.00	0.0	
20	82.75	0	0.00	0.0	

Assay Class: High Sensitivity DNA Assay
 Data Path: C:\...ents and Settings\Bioanalyzer\2014-01-16\2014-01-16_003.xad

Created: 1/16/2014 12:23:40 PM
 Modified: 1/16/2014 1:04:08 PM

Electropherogram Summary Continued ...



Overall Results for sample 6 : sample 7

Number of peaks found: 20 Noise: 0.3

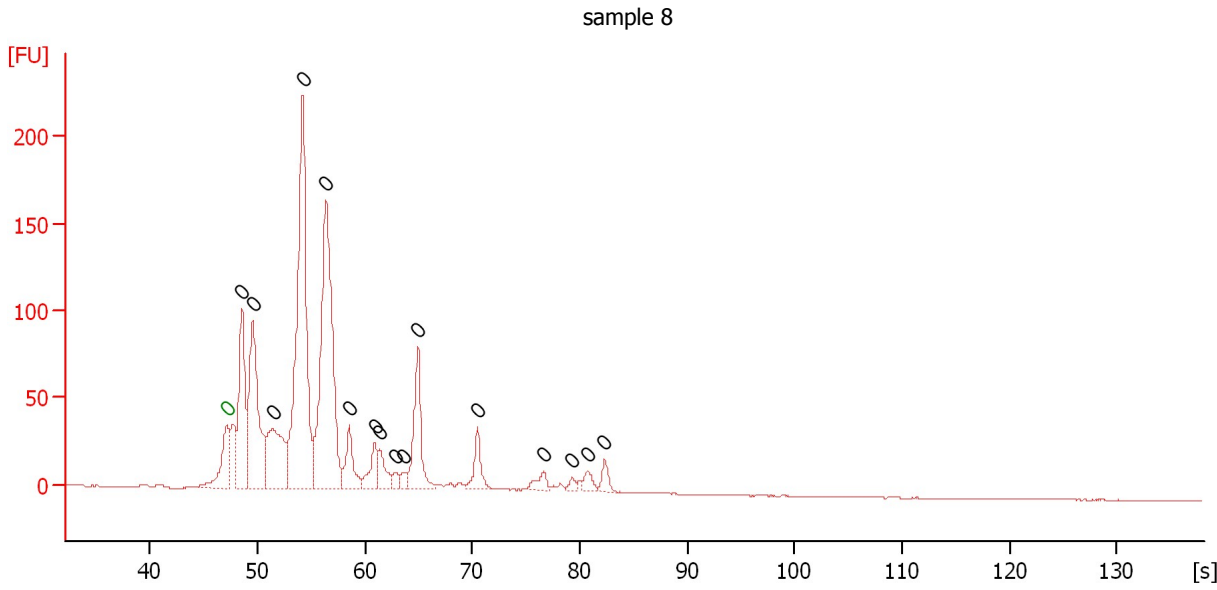
Peak table for sample 6 : sample 7

Peak	Aligned Migration Time [s]	Size [bp]	Conc. [pg/μl]	Molarity [pmol/l]	Observations
1	47.50	0	0.00	0.0	Lower Marker
2	48.15	0	0.00	0.0	
3	49.10	0	0.00	0.0	
4	50.25	0	0.00	0.0	
5	52.00	0	0.00	0.0	
6	53.20	0	0.00	0.0	
7	54.95	0	0.00	0.0	
8	56.05	0	0.00	0.0	
9	59.45	0	0.00	0.0	
10	60.80	0	0.00	0.0	
11	61.95	0	0.00	0.0	
12	64.65	0	0.00	0.0	
13	66.00	0	0.00	0.0	
14	71.85	0	0.00	0.0	
15	77.05	0	0.00	0.0	
16	78.10	0	0.00	0.0	
17	79.85	0	0.00	0.0	
18	81.00	0	0.00	0.0	
19	81.75	0	0.00	0.0	
20	82.75	0	0.00	0.0	
21	84.10	0	0.00	0.0	

Assay Class: High Sensitivity DNA Assay
 Data Path: C:\...ents and Settings\Bioanalyzer\2014-01-16\2014-01-16_003.xad

Created: 1/16/2014 12:23:40 PM
 Modified: 1/16/2014 1:04:08 PM

Electropherogram Summary Continued ...



Overall Results for sample 7 : sample 8

Number of peaks found: 16 Noise: 0.2

Peak table for sample 7 : sample 8

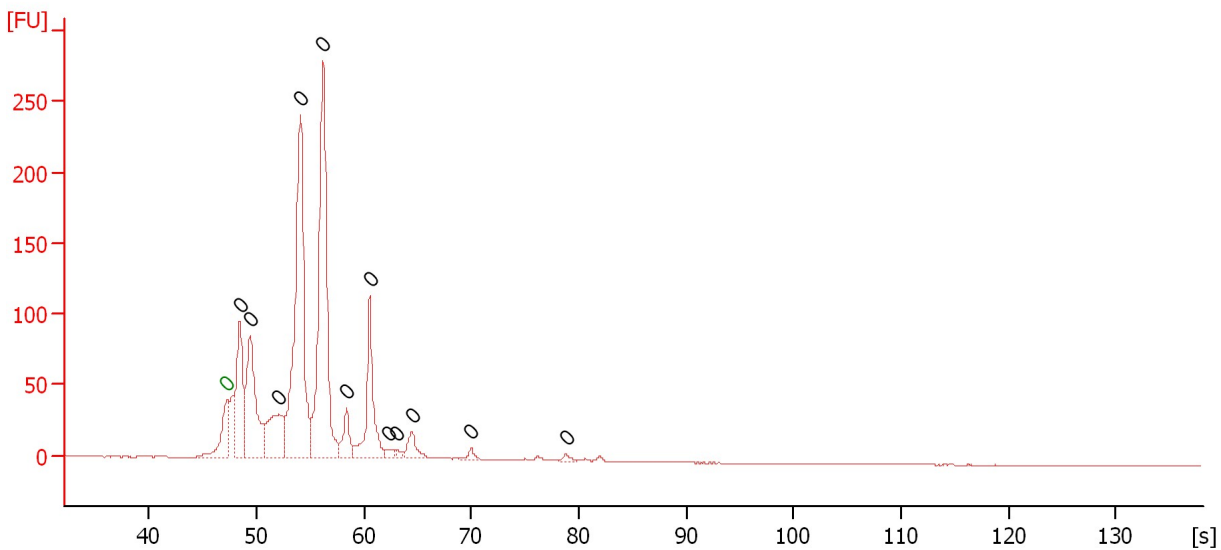
Peak	Aligned Migration Time [s]	Size [bp]	Conc. [pg/μl]	Molarity [pmol/l]	Observations
1	47.10	0	0.00	0.0	Lower Marker
2	48.55	0	0.00	0.0	
3	49.55	0	0.00	0.0	
4	51.40	0	0.00	0.0	
5	54.20	0	0.00	0.0	
6	56.40	0	0.00	0.0	
7	58.55	0	0.00	0.0	
8	60.90	0	0.00	0.0	
9	61.35	0	0.00	0.0	
10	62.85	0	0.00	0.0	
11	63.60	0	0.00	0.0	
12	64.95	0	0.00	0.0	
13	70.45	0	0.00	0.0	
14	76.60	0	0.00	0.0	
15	79.30	0	0.00	0.0	
16	80.70	0	0.00	0.0	
17	82.30	0	0.00	0.0	

Assay Class: High Sensitivity DNA Assay
 Data Path: C:\...ents and Settings\Bioanalyzer\2014-01-16\2014-01-16_003.xad

Created: 1/16/2014 12:23:40 PM
 Modified: 1/16/2014 1:04:08 PM

Electropherogram Summary Continued ...

sample 9



Overall Results for sample 8 : sample 9

Number of peaks found: 12 Noise: 0.1

Peak table for sample 8 : sample 9

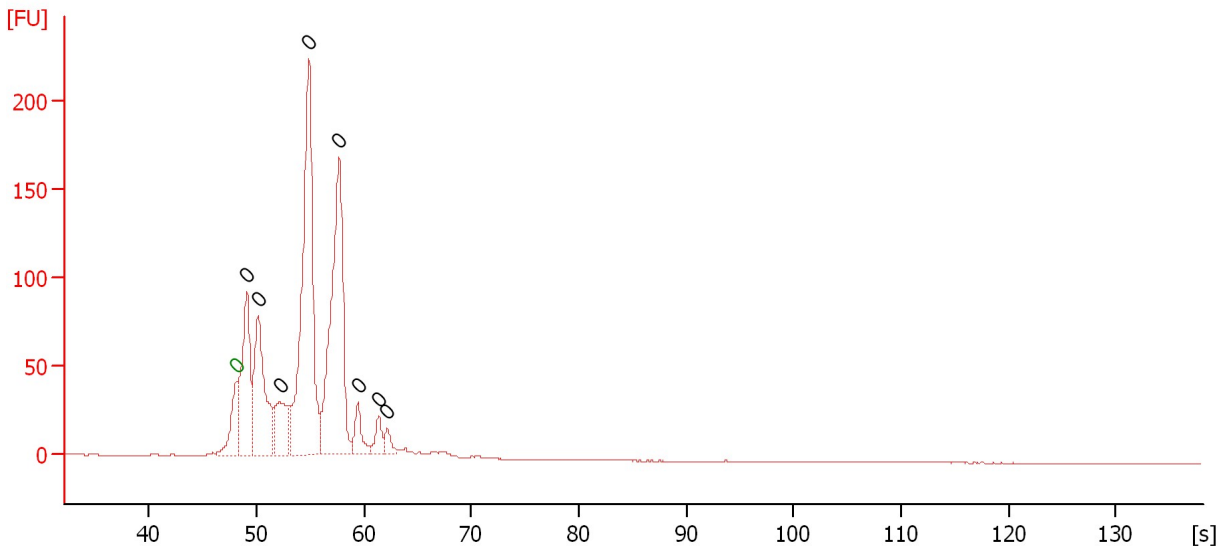
Peak	Aligned Migration Time [s]	Size [bp]	Conc. [pg/μl]	Molarity [pmol/l]	Observations
1	47.25	0	0.00	0.0	Lower Marker
2	48.45	0	0.00	0.0	
3	49.40	0	0.00	0.0	
4	52.05	0	0.00	0.0	
5	54.10	0	0.00	0.0	
6	56.20	0	0.00	0.0	
7	58.40	0	0.00	0.0	
8	60.55	0	0.00	0.0	
9	62.25	0	0.00	0.0	
10	63.10	0	0.00	0.0	
11	64.50	0	0.00	0.0	
12	69.95	0	0.00	0.0	
13	78.80	0	0.00	0.0	

Assay Class: High Sensitivity DNA Assay
 Data Path: C:\...ents and Settings\Bioanalyzer\2014-01-16\2014-01-16_003.xad

Created: 1/16/2014 12:23:40 PM
 Modified: 1/16/2014 1:04:08 PM

Electropherogram Summary Continued ...

sample 10



Overall Results for sample 9 : sample 10

Number of peaks found: 8 Noise: 0.1

Peak table for sample 9 : sample 10

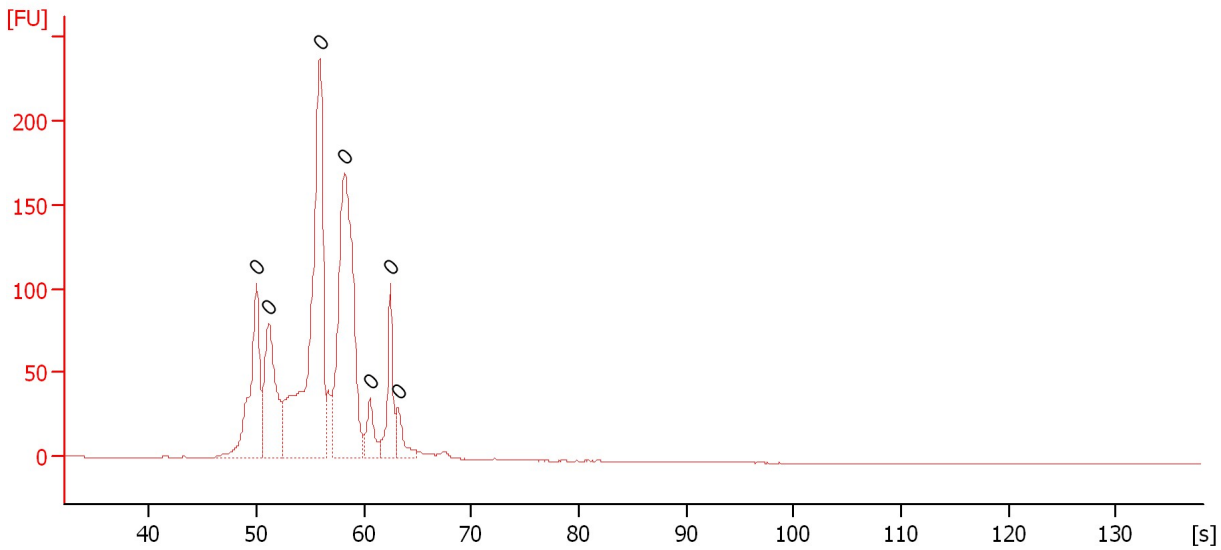
Peak	Aligned Migration Time [s]	Size [bp]	Conc. [pg/μl]	Molarity [pmol/l]	Observations
1	48.10	0	0.00	0.0	Lower Marker
2	49.10	0	0.00	0.0	
3	50.15	0	0.00	0.0	
4	52.20	0	0.00	0.0	
5	54.85	0	0.00	0.0	
6	57.70	0	0.00	0.0	
7	59.45	0	0.00	0.0	
8	61.35	0	0.00	0.0	
9	62.15	0	0.00	0.0	

Assay Class: High Sensitivity DNA Assay
Data Path: C:\...ents and Settings\Bioanalyzer\2014-01-16\2014-01-16_003.xad

Created: 1/16/2014 12:23:40 PM
Modified: 1/16/2014 1:04:08 PM

Electropherogram Summary Continued ...

sample 11



Overall Results for sample 10 : sample 11

Number of peaks found: 0 Noise: 0.1

Peak table for sample 10 : sample 11

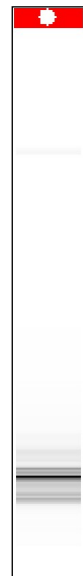
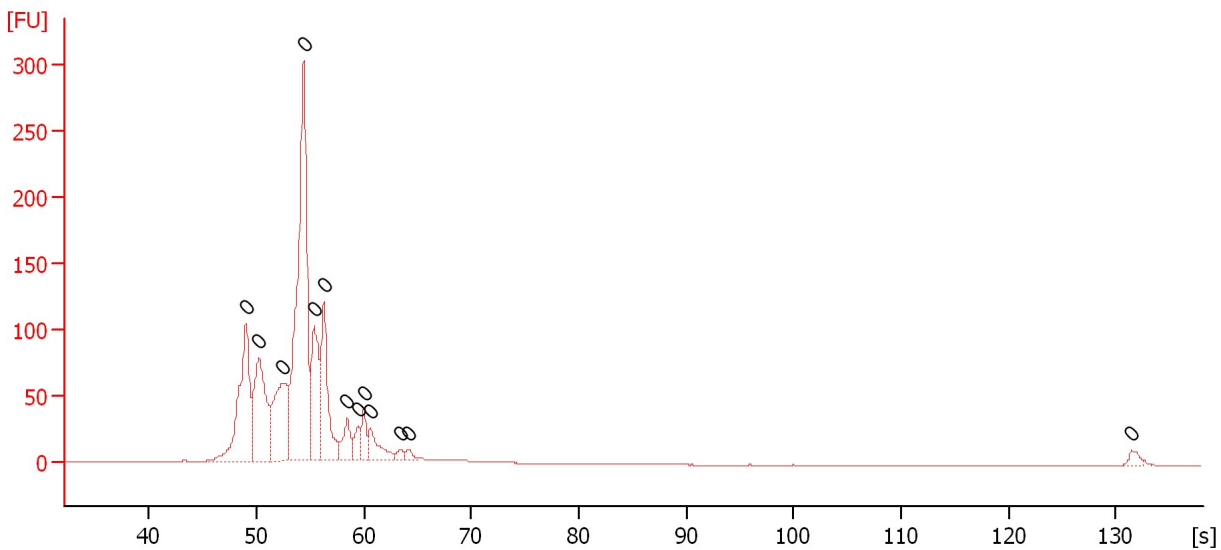
Peak	Aligned Migration Time [s]	Size [bp]	Conc. [pg/μl]	Molarity [pmol/l]	Observations
1	50.00	0	0.00	0.0	
2	51.10	0	0.00	0.0	
3	55.90	0	0.00	0.0	
4	58.20	0	0.00	0.0	
5	60.60	0	0.00	0.0	
6	62.45	0	0.00	0.0	
7	63.15	0	0.00	0.0	

Assay Class: High Sensitivity DNA Assay
 Data Path: C:\...ents and Settings\Bioanalyzer\2014-01-16\2014-01-16_003.xad

Created: 1/16/2014 12:23:40 PM
 Modified: 1/16/2014 1:04:08 PM

Electropherogram Summary Continued ...

sample 12



Overall Results for sample 11 : sample 12

Number of peaks found: 0 Noise: 0.1

Peak table for sample 11 : sample 12

Peak	Aligned Migration Time [s]	Size [bp]	Conc. [pg/μl]	Molarity [pmol/l]	Observations
1	49.00	0	0.00	0.0	
2	50.20	0	0.00	0.0	
3	52.50	0	0.00	0.0	
4	54.40	0	0.00	0.0	
5	55.35	0	0.00	0.0	
6	56.25	0	0.00	0.0	
7	58.45	0	0.00	0.0	
8	59.45	0	0.00	0.0	
9	60.00	0	0.00	0.0	
10	60.60	0	0.00	0.0	
11	63.35	0	0.00	0.0	
12	64.15	0	0.00	0.0	
13	131.50	0	0.00	0.0	

Assay Class: High Sensitivity DNA Assay
Data Path: C:\...ents and Settings\Bioanalyzer\2014-01-16\2014-01-16_003.xad

Created: 1/16/2014 12:23:40 PM
Modified: 1/16/2014 1:04:08 PM

Gel Image

