

Assay Class: High Sensitivity DNA Assay
Data Path: C:\...ttings\Bioanalyzer\2014-01-16\2014-01-16\2014-01-16_001.xad

Created: 1/16/2014 1:36:53 PM
Modified: 1/17/2014 4:27:17 PM

Electrophoresis File Run Summary

Instrument Information:

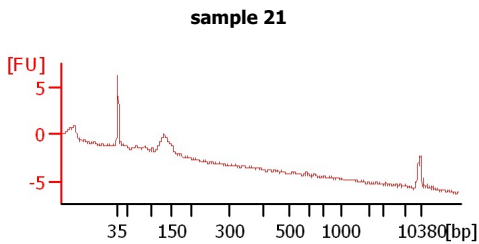
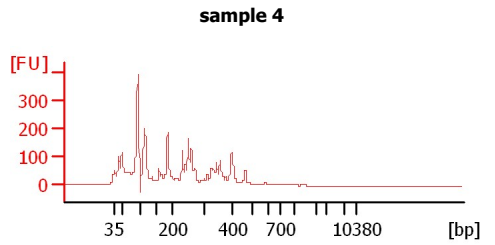
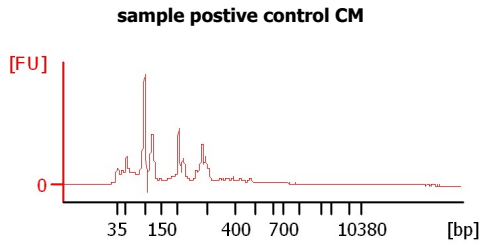
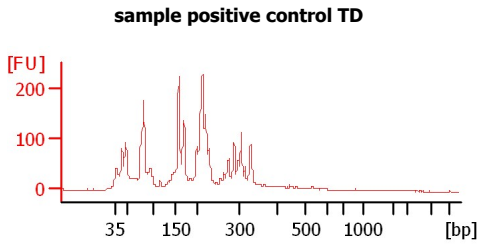
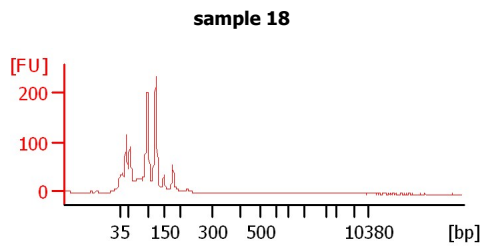
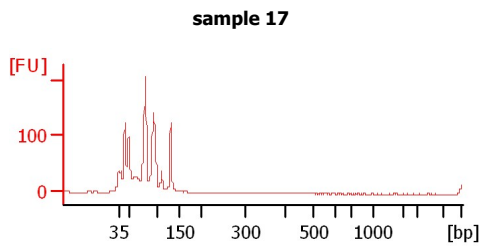
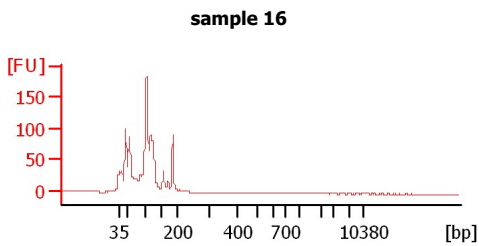
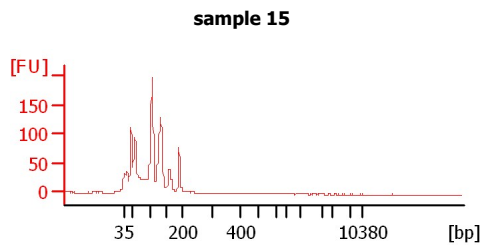
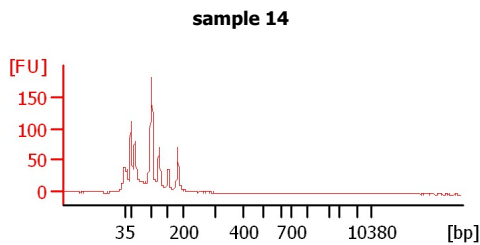
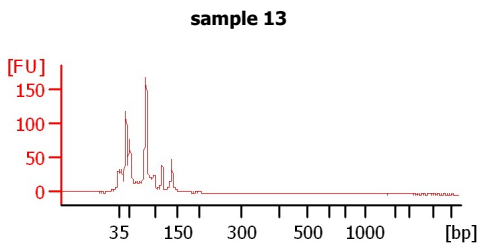
Instrument Name: DE13701086 Firmware: C.01.069
Serial#: DE13701086 Type: G2938B

Assay Information:

Assay Origin Path: C:\Program Files\Agilent\2100 bioanalyzer\2100 expert\assays\dsDNA\High Sensitivity DNA.xsy
Assay Class: High Sensitivity DNA Assay
Version: 1.03
Assay Comments: Copyright © 2003-2010 Agilent Technologies

Chip Information:

Chip Lot #:
Reagent Kit Lot #:
Chip Comments:



Assay Class: High Sensitivity DNA Assay
 Data Path: C:\...ttings\Bioanalyzer\2014-01-16\2014-01-16\2014-01-16_001.xad

Created: 1/16/2014 1:36:53 PM
 Modified: 1/17/2014 4:27:17 PM

Electrophoresis File Run Summary (Chip Summary)

Sample Name	Sample Comment	Rest. Digest	Status	Observation	Result Label	Result Color
sample 13		<input type="checkbox"/>	✓			
sample 14		<input type="checkbox"/>	✓			
sample 15		<input type="checkbox"/>	✓			
sample 16		<input type="checkbox"/>	✓			
sample 17		<input type="checkbox"/>	✓			
sample 18		<input type="checkbox"/>	✓			
sample positive control TD		<input type="checkbox"/>	✓			
sample positive control CM		<input type="checkbox"/>	✓			
sample 4		<input type="checkbox"/>	✓			
sample 21		<input type="checkbox"/>	✓			
sample 11		<input type="checkbox"/>	✓			
Ladder		<input type="checkbox"/>	✓			

Chip Lot #

Reagent Kit Lot #

Chip Comments :

Assay Class: High Sensitivity DNA Assay
Data Path: C:\...ttings\Bioanalyzer\2014-01-16\2014-01-16\2014-01-16_001.xad

Created: 1/16/2014 1:36:53 PM
Modified: 1/17/2014 4:27:17 PM

Electrophoresis Assay Details

General Analysis Settings

Number of Available Sample and Ladder Wells (Max.) : 12
Minimum Visible Range [s] : 32
Maximum Visible Range [s] : 138
Start Analysis Time Range [s] : 33
End Analysis Time Range [s] : 137.5
Ladder Concentration [pg/μl] : 1950
Uses Standard Area for Ladder Fragments
Lower Marker Concentration [pg/μl] : 125
Upper Marker Concentration [pg/μl] : 75
Used Upper Marker for Quantitation
Standard Curve Fit is Point to Point
Show Data Aligned to Lower and Upper Marker

Integrator Settings

Integration Start Time [s] : 33.05
Integration End Time [s] : 137
Slope Threshold : 0.8
Height Threshold [FU] : 5
Area Threshold : 0.1
Width Threshold [s] : 0.6
Baseline Plateau [s] : 0.5

Filter Settings

Filter Width [s] : 0.5
Polynomial Order : 4

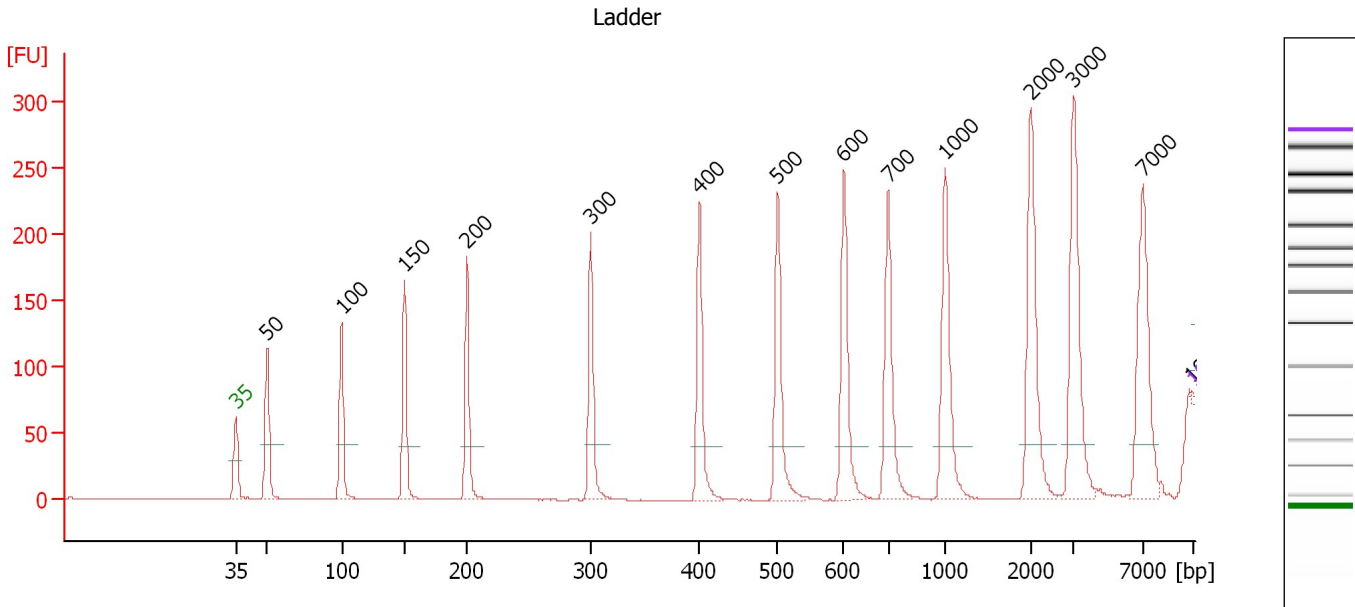
Ladder

Ladder Peak	Size	Area
1	35	160
2	50	210
3	100	208
4	150	221
5	200	242
6	300	270
7	400	305
8	500	306
9	600	336
10	700	321
11	1000	366
12	2000	413
13	3000	411
14	7000	400
15	10380	214

Assay Class: High Sensitivity DNA Assay
 Data Path: C:\...ttings\Bioanalyzer\2014-01-16\2014-01-16\2014-01-16_001.xad

Created: 1/16/2014 1:36:53 PM
 Modified: 1/17/2014 4:27:17 PM

Electropherogram Summary



Overall Results for Ladder

Noise: 0.2

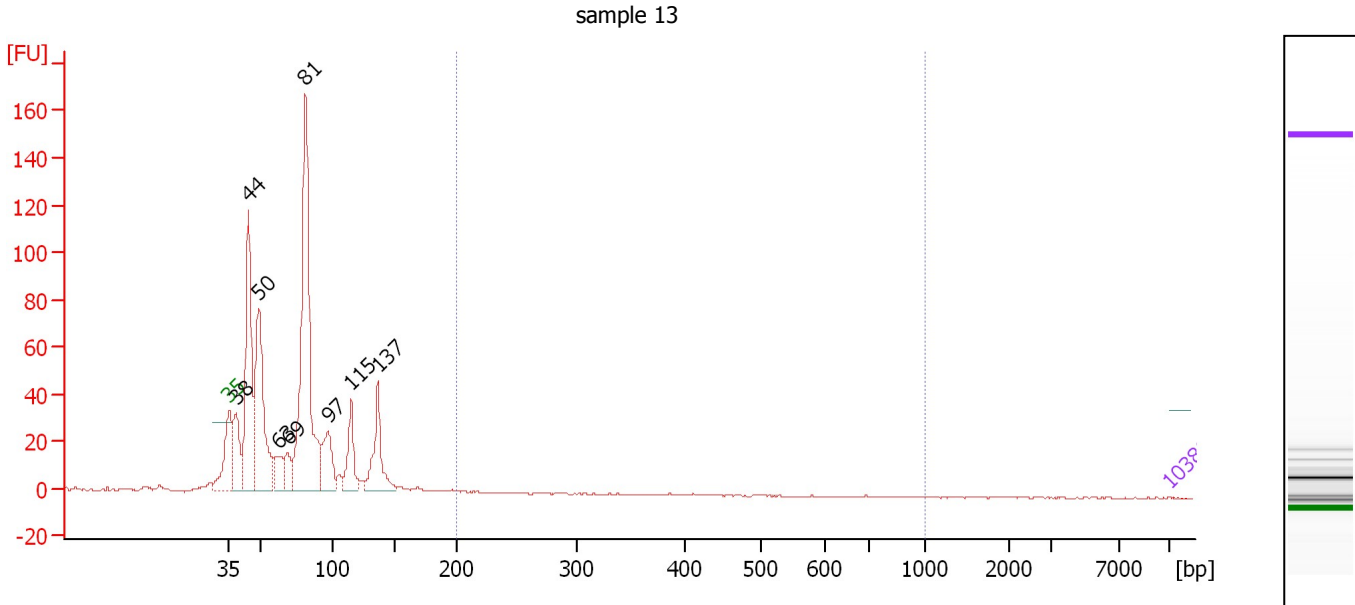
Peak table for Ladder

Peak	Aligned Migration Time [s]	Size [bp]	Conc. [pg/μl]	Molarity [pmol/l]	Observations
1	43.00	35	125.00	5,411.3	Lower Marker
2	45.26	50	150.00	4,545.5	Ladder Peak
3	50.72	100	150.00	2,272.7	Ladder Peak
4	55.32	150	150.00	1,515.2	Ladder Peak
5	59.88	200	150.00	1,136.4	Ladder Peak
6	68.92	300	150.00	757.6	Ladder Peak
7	76.87	400	150.00	568.2	Ladder Peak
8	82.60	500	150.00	454.5	Ladder Peak
9	87.43	600	150.00	378.8	Ladder Peak
10	90.67	700	150.00	324.7	Ladder Peak
11	94.84	1,000	150.00	227.3	Ladder Peak
12	101.07	2,000	150.00	113.6	Ladder Peak
13	104.23	3,000	150.00	75.8	Ladder Peak
14	109.30	7,000	150.00	32.5	Ladder Peak
15	112.88	10,273	0.00	0.0	
16	113.08	10,380	75.00	10.9	Upper Marker

Assay Class: High Sensitivity DNA Assay
 Data Path: C:\...ttings\Bioanalyzer\2014-01-16\2014-01-16\2014-01-16_001.xad

Created: 1/16/2014 1:36:53 PM
 Modified: 1/17/2014 4:27:17 PM

Electropherogram Summary Continued ...



Setpoint Deviations for sample 1 : sample 13

Height Threshold [FU] : 0.1

Overall Results for sample 1 : sample 13

Number of peaks found: 9 Corr. Area 1: 0.4
 Noise: 0.2

Peak table for sample 1 : sample 13

Peak	Aligned Migration Time [s]	Size [bp]	Conc. [pg/μl]	Molarity [pmol/l]	Observations
1	43.00	35	125.00	5,411.3	Lower Marker
2	43.52	38	711,958.38	28,073,486.0	
3	44.43	44	2,170,757.25	73,936,200.0	
4	45.22	50	2,107,001.25	64,164,356.0	
5	46.69	63	356,869.53	8,566,167.0	
6	47.37	69	317,099.72	6,932,279.0	
7	48.68	81	4,061,608.25	75,682,112.0	
8	50.35	97	646,643.50	10,143,106.0	
9	52.09	115	569,712.69	7,509,231.0	
10	54.08	137	803,001.19	8,911,035.0	
11	113.00	10,380	75.00	10.9	Upper Marker

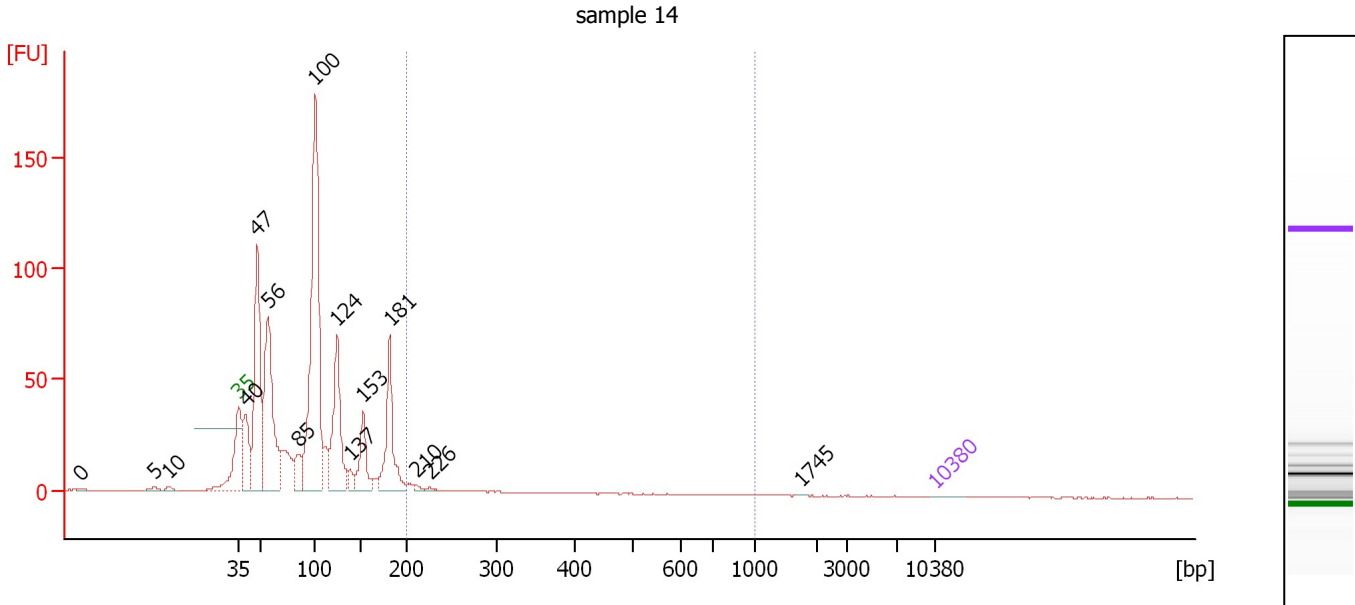
Region table for sample 1 : sample 13

From [bp]	To [bp]	Average Size [bp]	Molarity [pmol/l]	Conc. [pg/μl]	Corr. Area	% of Total	Size distribution in CV [%]	Color
200	1,000	263	31,741.0	4,872.59	0.4	0	37.2	Blue

Assay Class: High Sensitivity DNA Assay
 Data Path: C:\...ttings\Bioanalyzer\2014-01-16\2014-01-16\2014-01-16_001.xad

Created: 1/16/2014 1:36:53 PM
 Modified: 1/17/2014 4:27:17 PM

Electropherogram Summary Continued ...



Setpoint Deviations for sample 2 : sample 14

Height Threshold [FU] : 0.05

Overall Results for sample 2 : sample 14

Number of peaks found: 15 Corr. Area 1: 18.0
 Noise: 0.2

Peak table for sample 2 : sample 14

Peak	Aligned Migration Time [s]	Size [bp]	Conc. [pg/μl]	Molarity [pmol/l]	Observations
1	27.02	0	0.00	0.0	
2	34.47	5	0.00	0.0	
3	35.97	10	0.00	0.0	
4	43.00	35	125.00	5,411.3	Lower Marker
5	43.70	40	63,325.89	2,421,282.0	
6	44.88	47	177,520.97	5,667,630.5	
7	45.95	56	184,745.89	4,970,212.0	
8	49.06	85	29,256.17	522,563.3	
9	50.72	100	347,235.03	5,257,139.5	
10	52.92	124	122,033.80	1,491,301.9	
11	54.16	137	11,709.71	129,128.4	
12	55.55	153	50,029.81	496,800.3	
13	58.18	181	87,705.13	732,557.7	
14	60.81	210	2,941.01	21,188.4	
15	62.20	226	2,050.57	13,763.9	
16	99.48	1,745	66.66	57.9	
17	113.00	10,380	75.00	10.9	Upper Marker

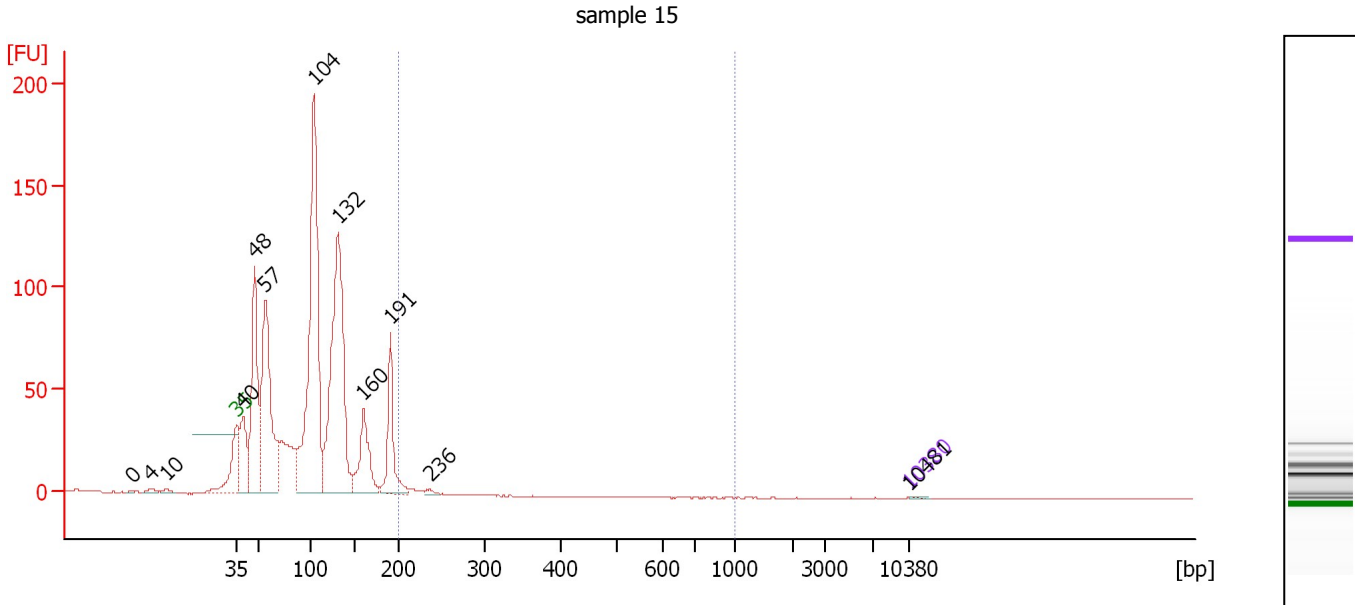
Region table for sample 2 : sample 14

From [bp]	To [bp]	Average Size [bp]	Molarity [pmol/l]	Conc. [pg/μl]	Corr. Area	% of Total	Size distribution in CV [%]	Color
200	1,000	260	113,961.3	18,397.96	18.0	2	28.3	Blue

Assay Class: High Sensitivity DNA Assay
 Data Path: C:\...ttings\Bioanalyzer\2014-01-16\2014-01-16\2014-01-16_001.xad

Created: 1/16/2014 1:36:53 PM
 Modified: 1/17/2014 4:27:17 PM

Electropherogram Summary Continued ...



Setpoint Deviations for sample 3 : sample 15

Height Threshold [FU] : 0.05

Overall Results for sample 3 : sample 15

Number of peaks found: 12 Corr. Area 1: 10.3
 Noise: 0.2

Peak table for sample 3 : sample 15

Peak	Aligned Migration Time [s]	Size [bp]	Conc. [pg/μl]	Molarity [pmol/l]	Observations
1	32.18	0	0.00	0.0	
2	34.17	4	0.00	0.0	
3	35.78	10	0.00	0.0	
4	43.00	35	125.00	5,411.3	Lower Marker
5	43.72	40	2,201,672.00	83,839,896.0	
6	44.94	48	5,604,499.50	177,308,320.0	
7	46.05	57	7,001,828.00	185,266,976.0	
8	51.10	104	13,062,714.00	189,918,320.0	
9	53.66	132	10,827,213.00	124,303,464.0	
10	56.27	160	2,438,650.25	23,031,754.0	
11	59.04	191	2,459,495.50	19,524,776.0	
12	63.15	236	90,874.16	582,903.4	
13	113.00	10,380	75.00	10.9	Upper Marker
14	113.11	10,481	0.00	0.0	

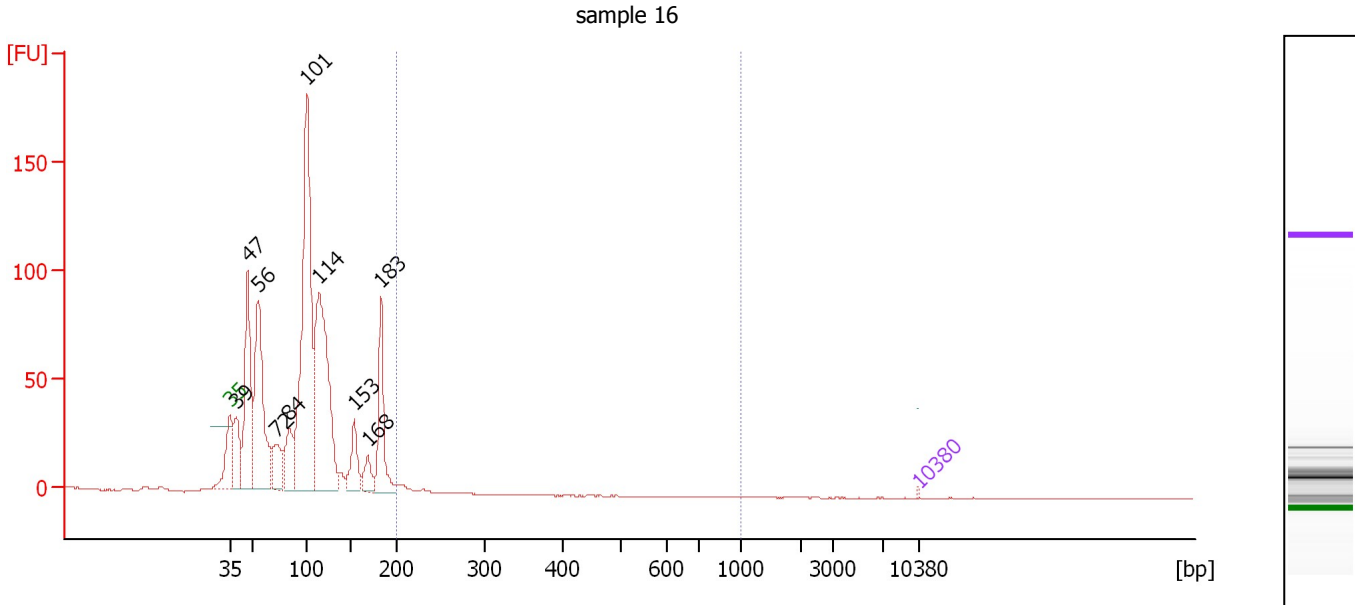
Region table for sample 3 : sample 15

From [bp]	To [bp]	Average Size [bp]	Molarity [pmol/l]	Conc. [pg/μl]	Corr. Area	% of Total	Size distribution in CV [%]	Color
200	1,000	213	2,396,279.8	336,267.69	10.3	1	5.8	Blue

Assay Class: High Sensitivity DNA Assay
 Data Path: C:\...ttings\Bioanalyzer\2014-01-16\2014-01-16\2014-01-16_001.xad

Created: 1/16/2014 1:36:53 PM
 Modified: 1/17/2014 4:27:17 PM

Electropherogram Summary Continued ...



Setpoint Deviations for sample 4 : sample 16

Height Threshold [FU] : 0.05

Overall Results for sample 4 : sample 16

Number of peaks found: 10 Corr. Area 1: 6.2
 Noise: 0.2

Peak table for sample 4 : sample 16

Peak	Aligned Migration Time [s]	Size [bp]	Conc. [pg/μl]	Molarity [pmol/l]	Observations
1	43.00	35	125.00	5,411.3	Lower Marker
2	43.65	39	0.00	0.0	
3	44.79	47	0.00	0.0	
4	45.87	56	0.00	0.0	
5	47.66	72	0.00	0.0	
6	48.96	84	0.00	0.0	
7	50.80	101	0.00	0.0	
8	52.05	114	0.00	0.0	
9	55.62	153	0.00	0.0	
10	56.98	168	0.00	0.0	
11	58.33	183	0.00	0.0	
12	113.00	10,380	75.00	10.9	Upper Marker

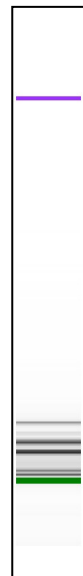
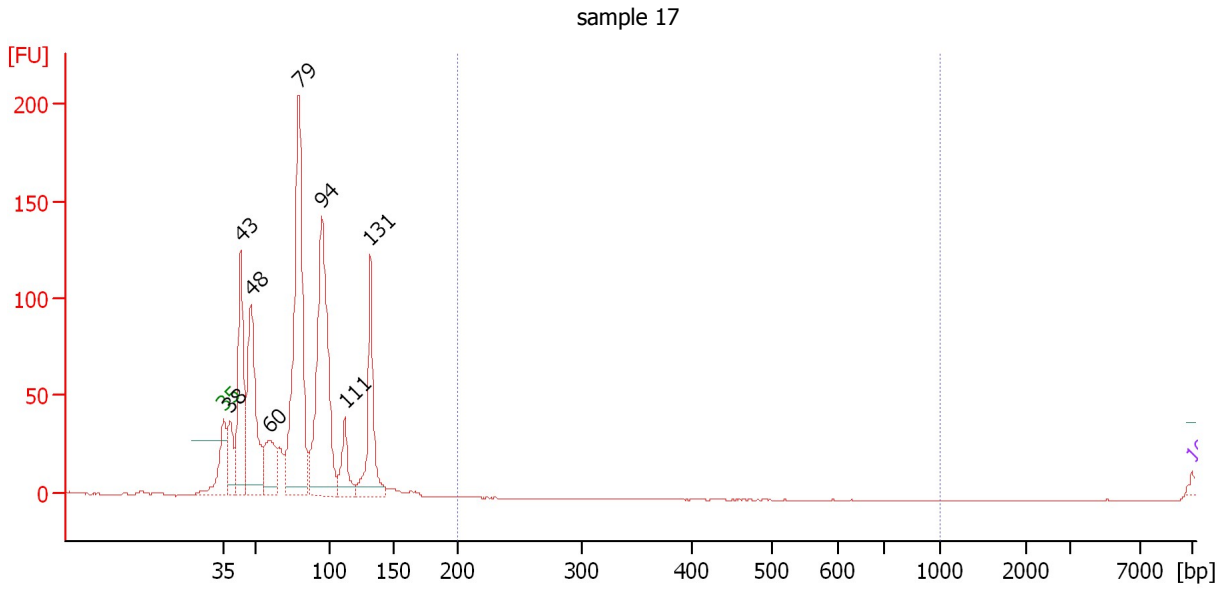
Region table for sample 4 : sample 16

From [bp]	To [bp]	Average Size [bp]	Molarity [pmol/l]	Conc. [pg/μl]	Corr. Area	% of Total	Size distribution in CV [%]	Color
200	1,000	210	0.0	0.00	6.2	1	4.6	Blue

Assay Class: High Sensitivity DNA Assay
 Data Path: C:\...ttings\Bioanalyzer\2014-01-16\2014-01-16\2014-01-16_001.xad

Created: 1/16/2014 1:36:53 PM
 Modified: 1/17/2014 4:27:17 PM

Electropherogram Summary Continued ...



Overall Results for sample 5 : sample 17

Number of peaks found: 8 Corr. Area 1: 0.0
 Noise: 0.2

Peak table for sample 5 : sample 17

Peak	Aligned Migration Time [s]	Size [bp]	Conc. [pg/μl]	Molarity [pmol/l]	Observations
1	43.00	35	125.00	5,411.3	Lower Marker
2	43.46	38	1,277.41	50,840.5	
3	44.23	43	4,013.74	140,823.3	
4	44.97	48	4,540.71	143,198.0	
5	46.31	60	1,656.34	42,063.9	
6	48.44	79	8,745.02	167,534.5	
7	50.09	94	7,608.40	122,277.6	
8	51.75	111	1,183.04	16,115.2	
9	53.60	131	2,981.01	34,388.2	
10	113.00	10,380	75.00	10.9	Upper Marker

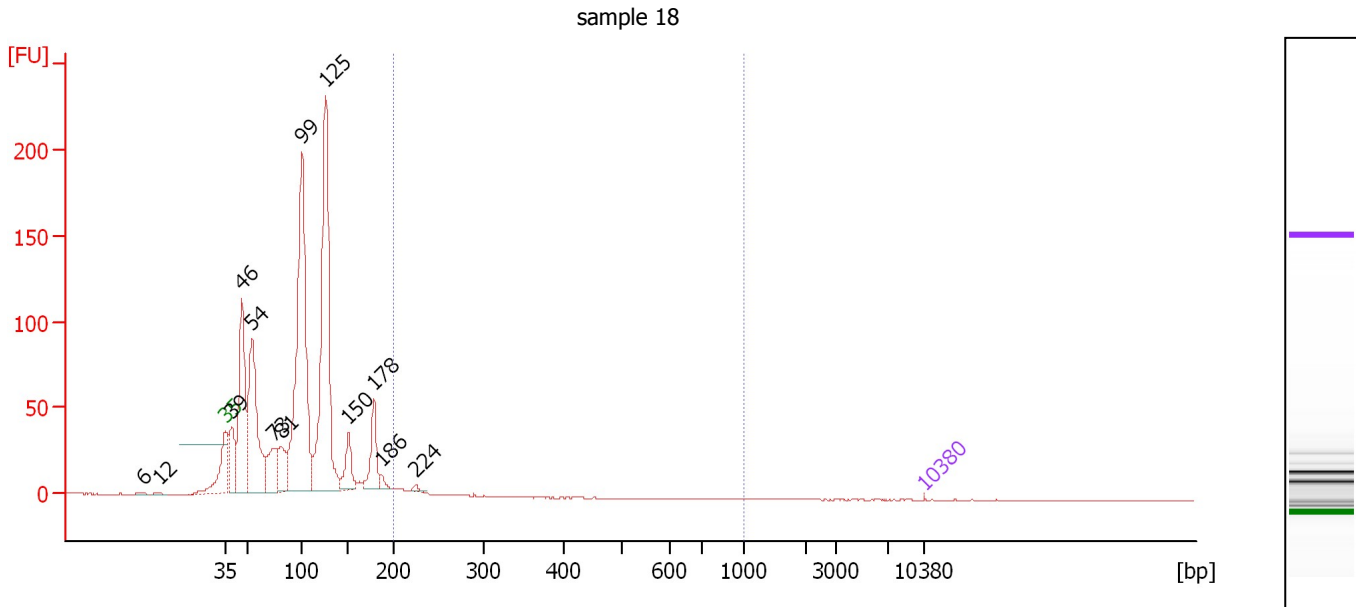
Region table for sample 5 : sample 17

From [bp]	To [bp]	Average Size [bp]	Molarity [pmol/l]	Conc. [pg/μl]	Corr. Area	% of Total	Size distribution in CV [%]	Color
200	1,000	0	0.0	0.00	0.0	0	0.0	Blue

Assay Class: High Sensitivity DNA Assay
 Data Path: C:\...ttings\Bioanalyzer\2014-01-16\2014-01-16\2014-01-16_001.xad

Created: 1/16/2014 1:36:53 PM
 Modified: 1/17/2014 4:27:17 PM

Electropherogram Summary Continued ...



Setpoint Deviations for sample 6 : sample 18

Height Threshold [FU] : 0.05

Overall Results for sample 6 : sample 18

Number of peaks found: 13 Corr. Area 1: 19.1
 Noise: 0.2

Peak table for sample 6 : sample 18

Peak	Aligned Migration Time [s]	Size [bp]	Conc. [pg/μl]	Molarity [pmol/l]	Observations
1	34.72	6	0.00	0.0	
2	36.33	12	0.00	0.0	
3	43.00	35	125.00	5,411.3	Lower Marker
4	43.64	39	0.00	0.0	
5	44.66	46	0.00	0.0	
6	45.67	54	0.00	0.0	
7	47.81	73	0.00	0.0	
8	48.66	81	0.00	0.0	
9	50.64	99	0.00	0.0	
10	53.04	125	0.00	0.0	
11	55.33	150	0.00	0.0	
12	57.90	178	0.00	0.0	
13	58.64	186	0.00	0.0	
14	62.01	224	0.00	0.0	
15	113.00	10,380	75.00	10.9	Upper Marker

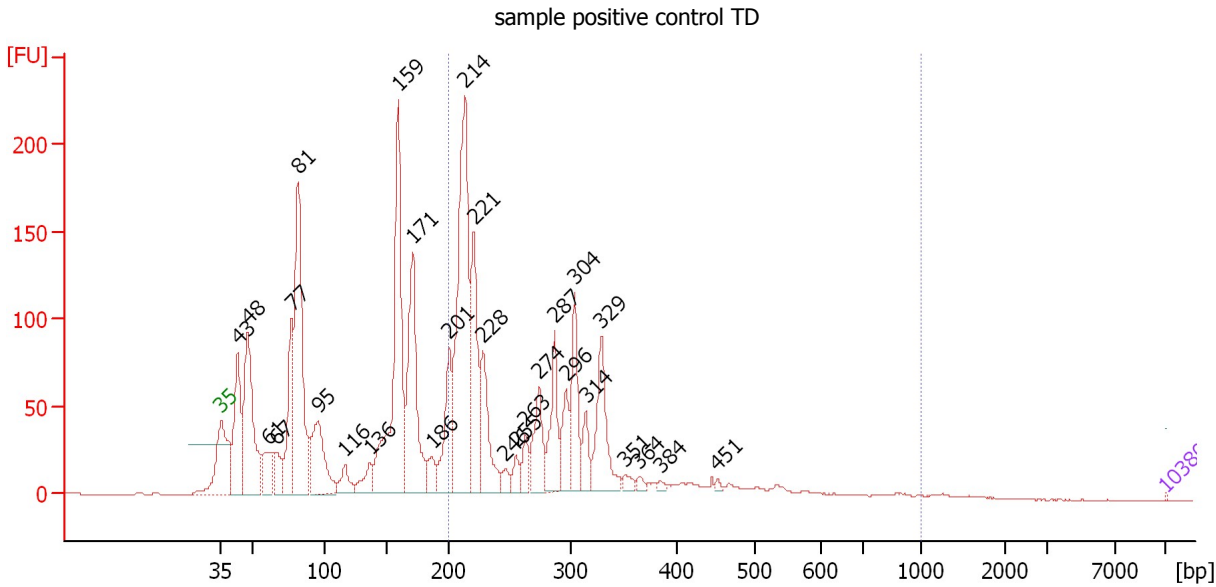
Region table for sample 6 : sample 18

From [bp]	To [bp]	Average Size [bp]	Molarity [pmol/l]	Conc. [pg/μl]	Corr. Area	% of Total	Size distribution in CV [%]	Color
200	1,000	221	0.0	0.00	19.1	1	7.8	Blue

Assay Class: High Sensitivity DNA Assay
 Data Path: C:\...ttings\Bioanalyzer\2014-01-16\2014-01-16\2014-01-16_001.xad

Created: 1/16/2014 1:36:53 PM
 Modified: 1/17/2014 4:27:17 PM

Electropherogram Summary Continued ...



Setpoint Deviations for sample 7 : sample positive control TD

Height Threshold [FU] : 0.05

Overall Results for sample 7 : sample positive control TD

Number of peaks found: 29 Corr. Area 1: 1,403.8
 Noise: 0.2

Peak table for sample 7 : sample positive control TD


Peak	Aligned Migration Time [s]	Size [bp]	Conc. [pg/μl]	Molarity [pmol/l]	Observations
1	43.00	35	125.00	5,411.3	Lower Marker
2	44.23	43	0.00	0.0	
3	44.98	48	0.00	0.0	
4	46.44	61	0.00	0.0	
5	47.15	67	0.00	0.0	
6	48.22	77	0.00	0.0	
7	48.69	81	0.00	0.0	
8	50.16	95	0.00	0.0	
9	52.21	116	0.00	0.0	
10	54.07	136	0.00	0.0	
11	56.13	159	0.00	0.0	
12	57.24	171	0.00	0.0	
13	58.62	186	0.00	0.0	
14	59.93	201	0.00	0.0	
15	61.11	214	0.00	0.0	
16	61.75	221	0.00	0.0	
17	62.42	228	0.00	0.0	
18	64.08	246	0.00	0.0	
19	64.87	255	0.00	0.0	
20	65.58	263	0.00	0.0	
21	66.61	274	0.00	0.0	
22	67.72	287	0.00	0.0	

Assay Class: High Sensitivity DNA Assay
 Data Path: C:\...ttings\Bioanalyzer\2014-01-16\2014-01-16\2014-01-16_001.xad


Created: 1/16/2014 1:36:53 PM
 Modified: 1/17/2014 4:27:17 PM

Electropherogram Summary Continued ...

... Peak table for sample 7 : sample positive control TD

Peak	Aligned Migration Time [s]	Size [bp]	Conc. [pg/μl]	Molarity [pmol/l]	Observations
23	68.59	296	0.00	0.0	
24	69.22	304	0.00	0.0	
25	70.05	314	0.00	0.0	
26	71.20	329	0.00	0.0	
27	72.98	351	0.00	0.0	
28	74.05	364	0.00	0.0	
29	75.59	384	0.00	0.0	
30	79.82	451	0.00	0.0	
31	 113.00	10,380	75.00	10.9	Upper Marker

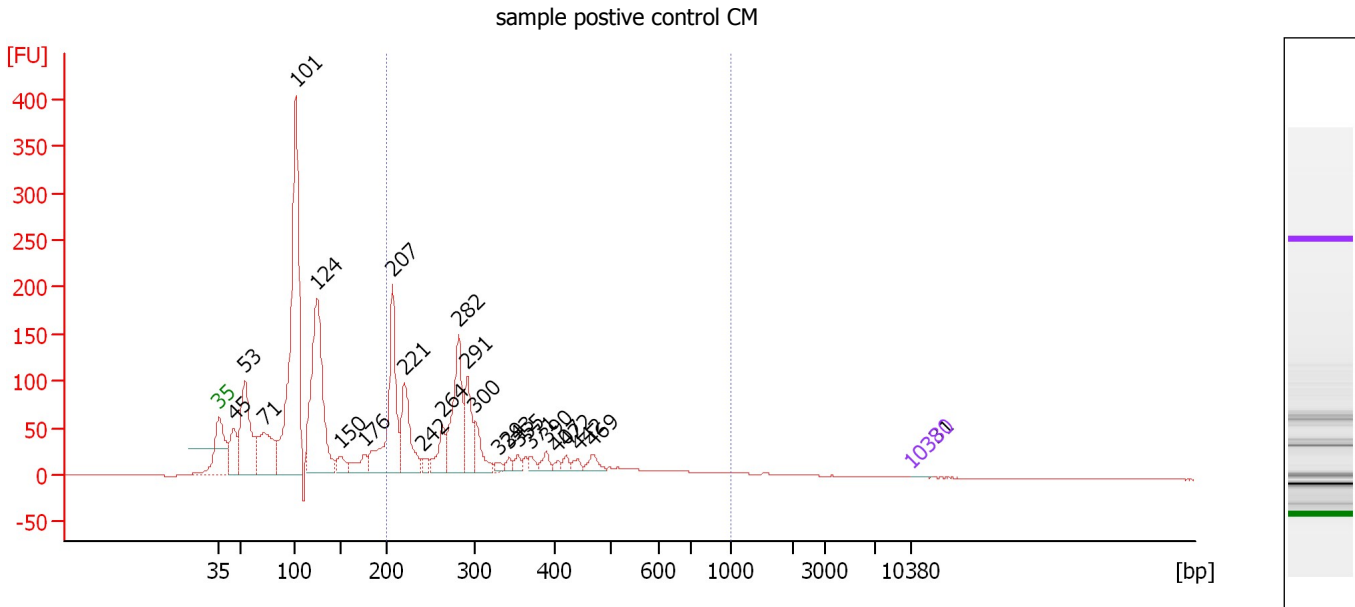
Region table for sample 7 : sample positive control TD

From [bp]	To [bp]	Average Size [bp]	Molarity [pmol/l]	Conc. [pg/μl]	Corr. Area	% of Total	Size distribution in CV [%]	Color
200	1,000	287	0.0	0.00	1,403.8	47	36.1	

Assay Class: High Sensitivity DNA Assay
 Data Path: C:\...ttings\Bioanalyzer\2014-01-16\2014-01-16\2014-01-16_001.xad

Created: 1/16/2014 1:36:53 PM
 Modified: 1/17/2014 4:27:17 PM

Electropherogram Summary Continued ...



Setpoint Deviations for sample 8 : sample positive control CM

Height Threshold [FU] : 0.05

Overall Results for sample 8 : sample positive control CM

Number of peaks found: 24 Corr. Area 1: 1,228.7
 Noise: 0.2

Peak table for sample 8 : sample positive control CM

Peak	Aligned Migration Time [s]	Size [bp]	Conc. [pg/μl]	Molarity [pmol/l]	Observations
1	43.00	35	125.00	5,411.3	Lower Marker
2	44.51	45	147,334.14	4,958,577.0	
3	45.59	53	421,236.56	12,040,908.0	
4	47.58	71	284,495.84	6,046,494.0	
5	50.77	101	1,273,946.63	19,200,676.0	
6	52.92	124	784,490.56	9,587,138.0	
7	55.35	150	55,127.39	555,481.3	
8	57.72	176	69,382.75	595,998.6	
9	60.53	207	462,557.63	3,382,537.5	
10	61.77	221	236,626.39	1,622,927.8	
11	63.65	242	22,545.43	141,280.5	
12	65.65	264	103,740.89	595,720.7	
13	67.27	282	306,654.53	1,649,102.3	
14	68.13	291	160,919.31	837,029.3	
15	68.94	300	94,815.34	478,439.6	
16	71.20	329	16,967.92	78,201.2	
17	72.34	343	18,933.64	83,637.0	
18	73.25	355	20,745.27	88,659.3	
19	74.55	371	20,377.49	83,264.3	
20	76.11	390	29,300.62	113,694.0	
21	77.24	407	13,331.14	49,683.1	
22	78.11	422	18,379.21	66,049.7	

Assay Class: High Sensitivity DNA Assay
 Data Path: C:\...ttings\Bioanalyzer\2014-01-16\2014-01-16\2014-01-16_001.xad


Created: 1/16/2014 1:36:53 PM
 Modified: 1/17/2014 4:27:17 PM

Electropherogram Summary Continued ...

... Peak table for sample 8 : sample positive control CM

Peak	Aligned Migration Time [s]	Size [bp]	Conc. [pg/μl]	Molarity [pmol/l]	Observations
23	79.29	442	18,132.97	62,114.0	
24	80.80	469	31,167.21	100,758.8	
25	112.95	10,331	167.26	24.5	
26	▶ 113.00	10,380	75.00	10.9	Upper Marker

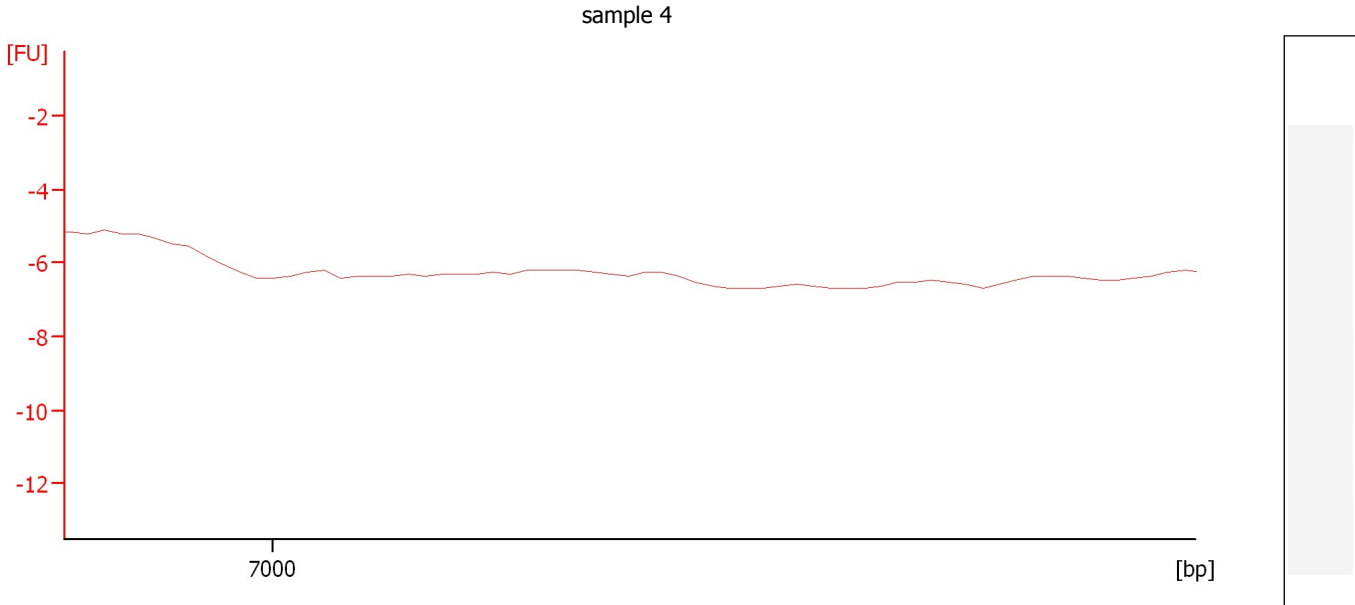
Region table for sample 8 : sample positive control CM

From [bp]	To [bp]	Average Size [bp]	Molarity [pmol/l]	Conc. [pg/μl]	Corr. Area	% of Total	Size distribution in CV [%]	Color
200	1,000	323	9,776,304.0	1,817,251.63	1,228.7	40	41.3	

Assay Class: High Sensitivity DNA Assay
 Data Path: C:\...ttings\Bioanalyzer\2014-01-16\2014-01-16\2014-01-16_001.xad

Created: 1/16/2014 1:36:53 PM
 Modified: 1/17/2014 4:27:17 PM

Electropherogram Summary Continued ...



Setpoint Deviations for sample 9 : sample 4

Height Threshold [FU] : 0.01

Overall Results for sample 9 : sample 4

Number of peaks found: 28 Corr. Area 1: 1,287.3
 Noise: 0.2

Peak table for sample 9 : sample 4

Pea k	Aligned Migration Time [s]	Size [bp]	Conc. [pg/μl]	Molarity [pmol/l]	Observations
1	43.00	35	125.00	5,411.3	Lower Marker
2	44.25	43	2,876,852.75	100,649,784.0	
3	45.18	49	4,297,887.00	131,694,544.0	
4	46.92	65	2,962,341.25	68,842,744.0	
5	49.80	92	12,112,964.00	200,287,776.0	
6	51.76	111	7,795,256.50	106,045,344.0	
7	53.89	134	921,348.06	10,382,451.0	
8	55.90	156	1,224,602.25	11,863,104.0	
9	56.55	164	694,650.06	6,434,644.5	
10	58.46	184	5,091,729.00	41,824,120.0	
11	60.47	207	572,121.69	4,195,879.5	
12	62.65	231	1,786,478.75	11,734,212.0	
13	63.52	240	1,211,313.25	7,637,432.5	
14	64.34	249	2,361,773.75	14,351,903.0	
15	65.15	258	2,144,963.25	12,578,864.0	
16	66.30	271	1,189,393.63	6,649,687.0	
17	68.20	292	229,368.45	1,189,854.1	
18	69.02	301	281,097.75	1,413,760.0	
19	69.84	312	472,871.78	2,299,877.5	
20	70.98	326	755,326.81	3,511,580.0	
21	71.52	333	834,883.19	3,801,588.3	
22	72.56	346	854,821.13	3,745,943.8	

Assay Class: High Sensitivity DNA Assay
 Data Path: C:\...ttings\Bioanalyzer\2014-01-16\2014-01-16\2014-01-16_001.xad


Created: 1/16/2014 1:36:53 PM
 Modified: 1/17/2014 4:27:17 PM

Electropherogram Summary Continued ...

... Peak table for sample 9 : sample 4

Peak	Aligned Migration Time [s]	Size [bp]	Conc. [pg/ μ l]	Molarity [pmol/l]	Observations
23	73.59	359	1,184,499.50	5,002,449.0	
24	74.35	368	310,144.47	1,275,738.8	
25	75.22	379	363,207.94	1,450,864.4	
26	76.80	399	2,234,806.25	8,483,097.0	
27	79.25	442	158,136.06	542,597.8	
28	80.78	468	710,742.06	2,300,139.3	
29	113.00	10,380	75.00	10.9	Upper Marker
30	113.16	10,529	0.00	0.0	

Region table for sample 9 : sample 4

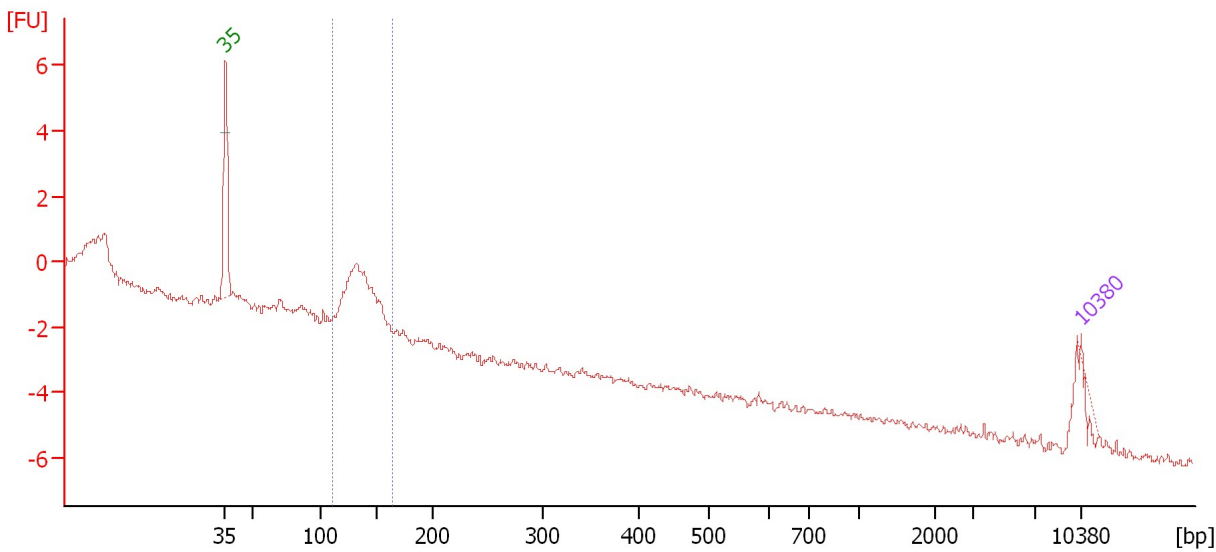
From [bp]	To [bp]	Average Size [bp]	Molarity [pmol/l]	Conc. [pg/ μ l]	Corr. Area	% of Total	Size distribution in CV [%]	Color
200	1,000	333	100,731,336.0	19,858,206.00	1,287.3	40	31.1	

Assay Class: High Sensitivity DNA Assay
 Data Path: C:\...ttings\Bioanalyzer\2014-01-16\2014-01-16\2014-01-16_001.xad

Created: 1/16/2014 1:36:53 PM
 Modified: 1/17/2014 4:27:17 PM

Electropherogram Summary Continued ...

sample 21



Overall Results for sample 10 : sample 21

Number of peaks found: 0 Corr. Area 1: 5.9
 Noise: 0.2

Peak table for sample 10 : sample 21

Peak	Aligned Migration Time [s]	Size [bp]	Conc. [pg/μl]	Molarity [pmol/l]	Observations
1	43.00	35	125.00	5,411.3	Lower Marker
2	113.00	10,380	75.00	10.9	Upper Marker

Region table for sample 10 : sample 21

From [bp]	To [bp]	Average Size [bp]	Molarity [pmol/l]	Conc. [pg/μl]	Corr. Area	% of Total	Size distribution in CV [%]	Color
111	165	136	184,897.0	16,568.18	5.9	47	6.6	Blue

Assay Class: High Sensitivity DNA Assay
Data Path: C:\...ttings\Bioanalyzer\2014-01-16\2014-01-16\2014-01-16_001.xad

Created: 1/16/2014 1:36:53 PM
Modified: 1/17/2014 4:27:17 PM

Gel Image

Assay Class: High Sensitivity DNA Assay
Data Path: C:\...ttings\Bioanalyzer\2014-01-16\2014-01-16\2014-01-16_001.xad

Created: 1/16/2014 1:36:53 PM
Modified: 1/17/2014 4:27:17 PM

Invalid Samples

Sample 11 has not been run, no results available.