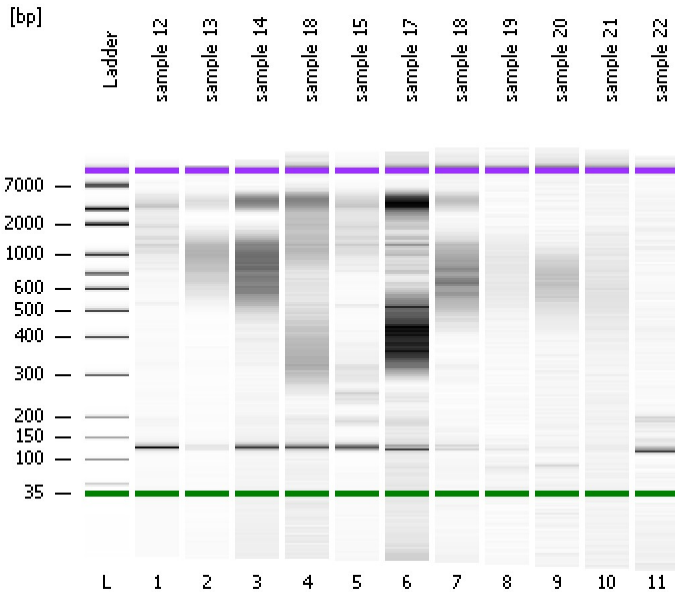


Assay Class: High Sensitivity DNA Assay
Data Path: C:\...ents and Settings\Bioanalyzer\2014-01-21\2014-01-21_003.xad

Created: 1/21/2014 3:39:23 PM
Modified: 1/21/2014 4:25:39 PM

Electrophoresis File Run Summary



Instrument Information:

Instrument Name: DE13701086 Firmware: C.01.069
Serial#: DE13701086 Type: G2938B

Assay Information:

Assay Origin Path: C:\Program Files\Agilent\2100 bioanalyzer\2100 expert\assays\dsDNA\High Sensitivity DNA.xsy
Assay Class: High Sensitivity DNA Assay
Version: 1.03
Assay Comments: Copyright © 2003-2010 Agilent Technologies

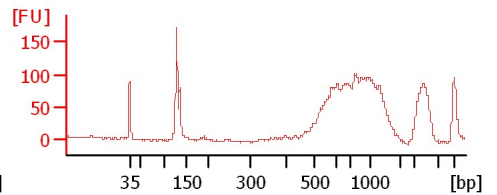
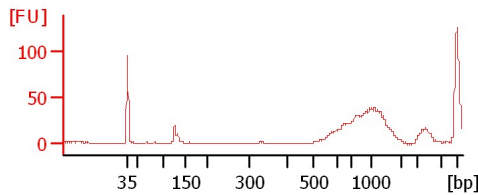
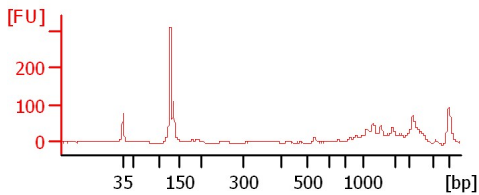
Chip Information:

Chip Lot #: Reagent Kit Lot #:
Chip Comments:

sample 12

sample 13

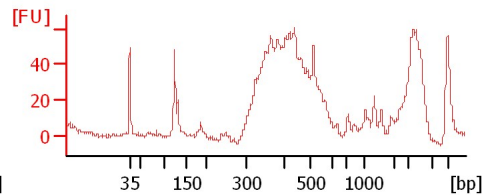
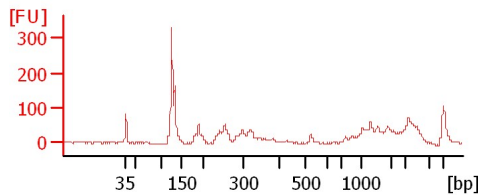
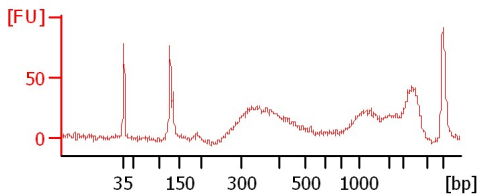
sample 14



sample 18

sample 15

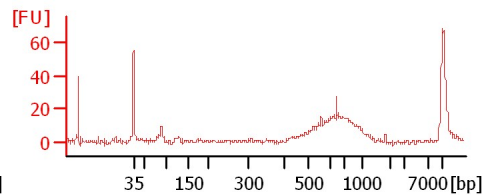
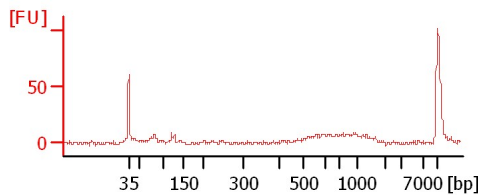
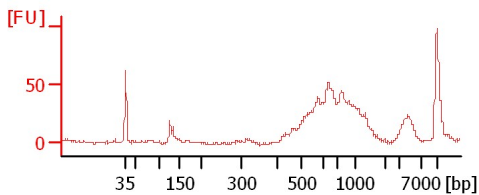
sample 17



sample 18

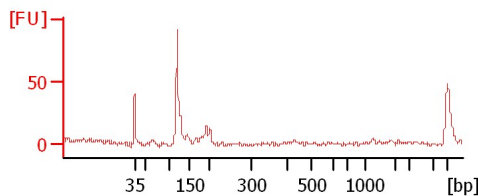
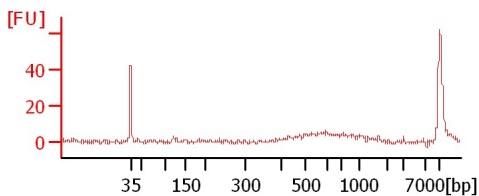
sample 19

sample 20



sample 21

sample 22



Assay Class: High Sensitivity DNA Assay
 Data Path: C:\...ents and Settings\Bioanalyzer\2014-01-21\2014-01-21_003.xad

Created: 1/21/2014 3:39:23 PM
 Modified: 1/21/2014 4:25:39 PM

Electrophoresis File Run Summary (Chip Summary)

Sample Name	Sample Comment	Rest. Digest	Status	Observation	Result Label	Result Color
sample 12		<input type="checkbox"/>	✓			
sample 13		<input type="checkbox"/>	✓			
sample 14		<input type="checkbox"/>	✓			
sample 18		<input type="checkbox"/>	✓			
sample 15		<input type="checkbox"/>	✓			
sample 17		<input type="checkbox"/>	✓			
sample 18		<input type="checkbox"/>	✓			
sample 19		<input type="checkbox"/>	✓			
sample 20		<input type="checkbox"/>	✓			
sample 21		<input type="checkbox"/>	✓			
sample 22		<input type="checkbox"/>	✓			
Ladder		<input type="checkbox"/>	✓			

Chip Lot #

Reagent Kit Lot #

Chip Comments :

Assay Class: High Sensitivity DNA Assay
Data Path: C:\...ents and Settings\Bioanalyzer\2014-01-21\2014-01-21_003.xad

Created: 1/21/2014 3:39:23 PM
Modified: 1/21/2014 4:25:39 PM

Electrophoresis Assay Details

General Analysis Settings

Number of Available Sample and Ladder Wells (Max.) : 12
Minimum Visible Range [s] : 32
Maximum Visible Range [s] : 138
Start Analysis Time Range [s] : 33
End Analysis Time Range [s] : 137.5
Ladder Concentration [pg/μl] : 1950
Uses Standard Area for Ladder Fragments
Lower Marker Concentration [pg/μl] : 125
Upper Marker Concentration [pg/μl] : 75
Used Upper Marker for Quantitation
Standard Curve Fit is Point to Point
Show Data Aligned to Lower and Upper Marker

Integrator Settings

Integration Start Time [s] : 33.05
Integration End Time [s] : 137
Slope Threshold : 0.8
Height Threshold [FU] : 5
Area Threshold : 0.1
Width Threshold [s] : 0.6
Baseline Plateau [s] : 0.5

Filter Settings

Filter Width [s] : 0.5
Polynomial Order : 4

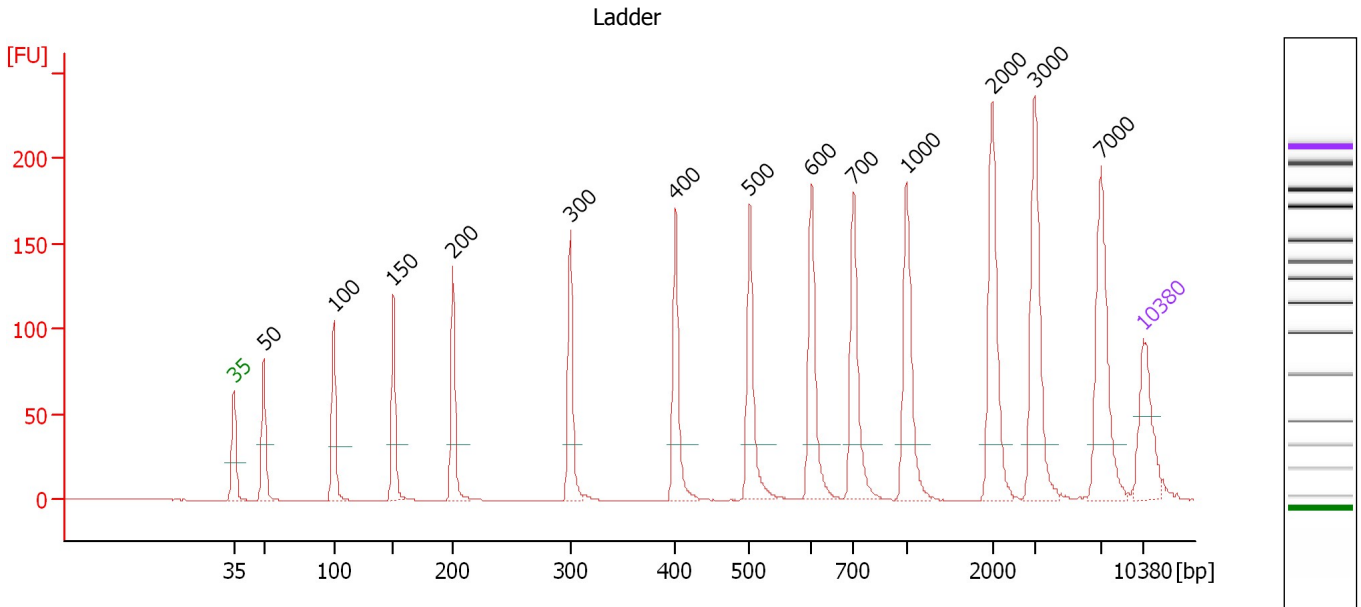
Ladder

Ladder Peak	Size	Area
1	35	160
2	50	210
3	100	208
4	150	221
5	200	242
6	300	270
7	400	305
8	500	306
9	600	336
10	700	321
11	1000	366
12	2000	413
13	3000	411
14	7000	400
15	10380	214

Assay Class: High Sensitivity DNA Assay
 Data Path: C:\...ents and Settings\Bioanalyzer\2014-01-21\2014-01-21_003.xad

Created: 1/21/2014 3:39:23 PM
 Modified: 1/21/2014 4:25:39 PM

Electropherogram Summary



Overall Results for Ladder

Noise: 0.2

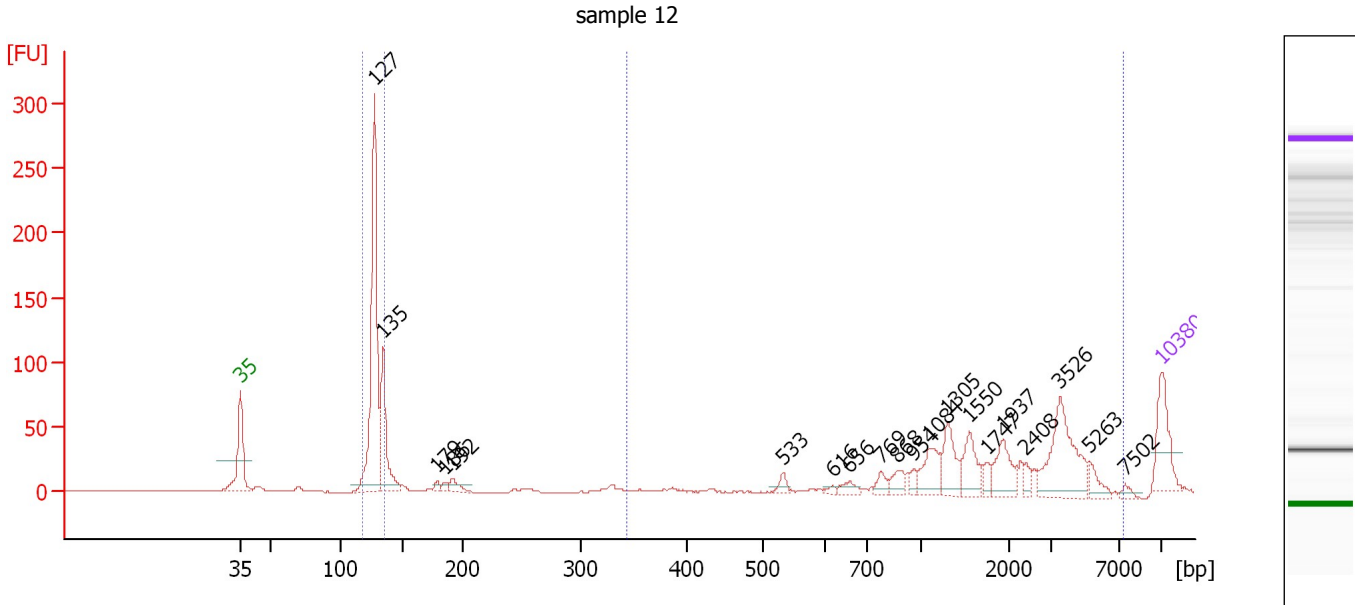
Peak table for Ladder

Peak	Aligned Migration Time [s]	Size [bp]	Conc. [pg/μl]	Molarity [pmol/l]	Observations
1	43.00	35	125.00	5,411.3	Lower Marker
2	45.30	50	150.00	4,545.5	Ladder Peak
3	50.67	100	150.00	2,272.7	Ladder Peak
4	55.27	150	150.00	1,515.2	Ladder Peak
5	59.86	200	150.00	1,136.4	Ladder Peak
6	68.89	300	150.00	757.6	Ladder Peak
7	76.97	400	150.00	568.2	Ladder Peak
8	82.68	500	150.00	454.5	Ladder Peak
9	87.44	600	150.00	378.8	Ladder Peak
10	90.68	700	150.00	324.7	Ladder Peak
11	94.74	1,000	150.00	227.3	Ladder Peak
12	101.35	2,000	150.00	113.6	Ladder Peak
13	104.59	3,000	150.00	75.8	Ladder Peak
14	109.72	7,000	150.00	32.5	Ladder Peak
15	113.00	10,380	75.00	10.9	Upper Marker

Assay Class: High Sensitivity DNA Assay
 Data Path: C:\...ents and Settings\Bioanalyzer\2014-01-21\2014-01-21_003.xad

Created: 1/21/2014 3:39:23 PM
 Modified: 1/21/2014 4:25:39 PM

Electropherogram Summary Continued ...



Overall Results for sample 1 : sample 12

Number of peaks found: 20 Corr. Area 1: 349.4
 Noise: 0.2 Corr. Area 2: 461.1

Peak table for sample 1 : sample 12



Peak	Aligned Migration Time [s]	Size [bp]	Conc. [pg/μl]	Molarity [pmol/l]	Observations
1	43.00	35	125.00	5,411.3	Lower Marker
2	53.17	127	552.22	6,580.6	
3	53.86	135	192.44	2,165.6	
4	57.95	179	10.11	85.5	
5	58.56	186	9.37	76.4	
6	59.16	192	23.90	188.2	
7	84.24	533	15.71	44.7	
8	87.97	616	6.75	16.6	
9	89.26	656	16.93	39.1	
10	91.61	769	20.04	39.5	
11	92.95	868	26.43	46.2	
12	94.12	954	13.68	21.7	
13	95.30	1,084	61.89	86.5	
14	96.76	1,305	63.78	74.0	
15	98.38	1,550	58.39	57.1	
16	99.67	1,747	16.15	14.0	
17	100.93	1,937	59.16	46.3	
18	102.67	2,408	13.87	8.7	
19	105.26	3,526	144.59	62.1	
20	107.49	5,263	23.24	6.7	
21	110.20	7,502	8.99	1.8	
22	113.00	10,380	75.00	10.9	Upper Marker

Assay Class: High Sensitivity DNA Assay
Data Path: C:\...ents and Settings\Bioanalyzer\2014-01-21\2014-01-21_003.xad

Created: 1/21/2014 3:39:23 PM
Modified: 1/21/2014 4:25:39 PM

Electropherogram Summary Continued ...

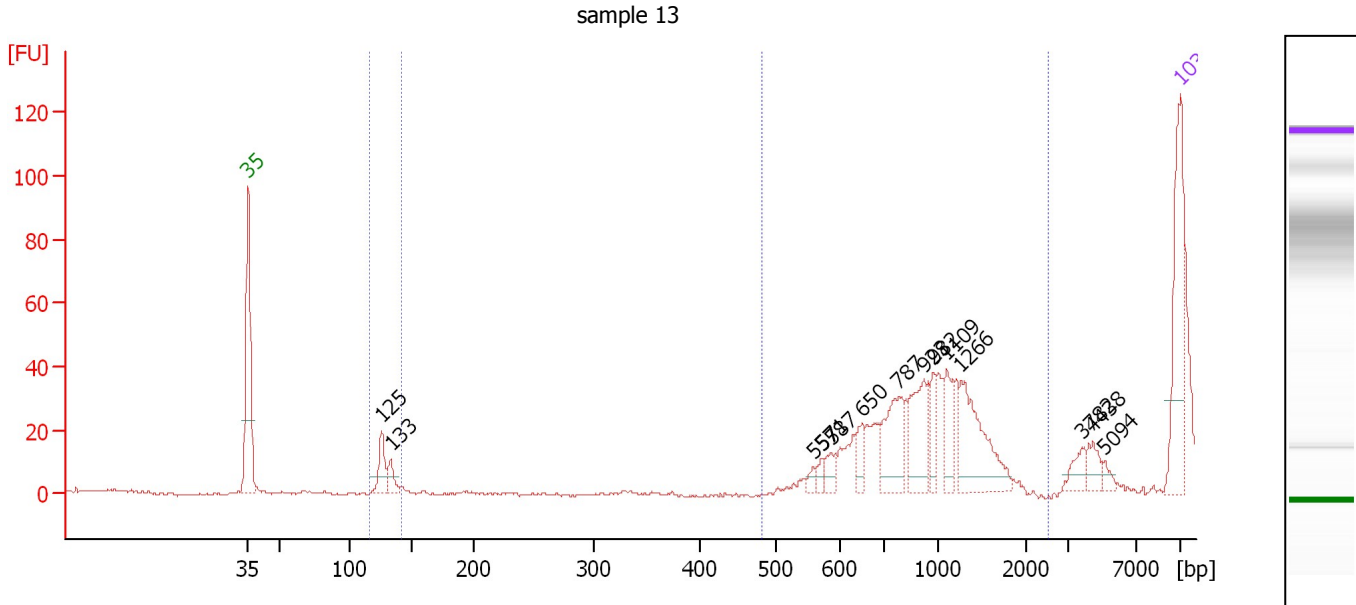
... Region table for sample 1 : sample 12

From [bp]	To [bp]	Average Size [bp]	Molarity [pmol/l]	Conc. [pg/μl]	Corr. Area	% of Total	Size distribution in CV [%]	Color
117	135	128	7,340.1	618.84	349.4	38	2.7	
343	7,442	2,294	440.0	453.32	461.1	50	57.8	

Assay Class: High Sensitivity DNA Assay
 Data Path: C:\...ents and Settings\Bioanalyzer\2014-01-21\2014-01-21_003.xad

Created: 1/21/2014 3:39:23 PM
 Modified: 1/21/2014 4:25:39 PM

Electropherogram Summary Continued ...



Overall Results for sample 2 : sample 13

Number of peaks found: 14 Corr. Area 1: 2.0
 Noise: 0.4 Corr. Area 2: 0.2

Peak table for sample 2 : sample 13

Peak	Aligned Migration Time [s]	Size [bp]	Conc. [pg/μl]	Molarity [pmol/l]	Observations
1	43.00	35	125.00	5,411.3	Lower Marker
2	53.01	125	33.37	403.1	
3	53.69	133	19.37	220.9	
4	85.41	557	6.47	17.6	
5	86.05	571	7.56	20.1	
6	86.81	587	13.25	34.2	
7	89.05	650	14.46	33.7	
8	91.86	787	55.58	107.0	
9	93.70	923	53.21	87.4	
10	94.50	982	21.99	33.9	
11	95.46	1,109	27.37	37.4	
12	96.50	1,266	75.71	90.6	
13	105.59	3,782	13.49	5.4	
14	106.43	4,438	13.76	4.7	
15	107.27	5,094	5.27	1.6	
16	113.00	10,380	75.00	10.9	Upper Marker

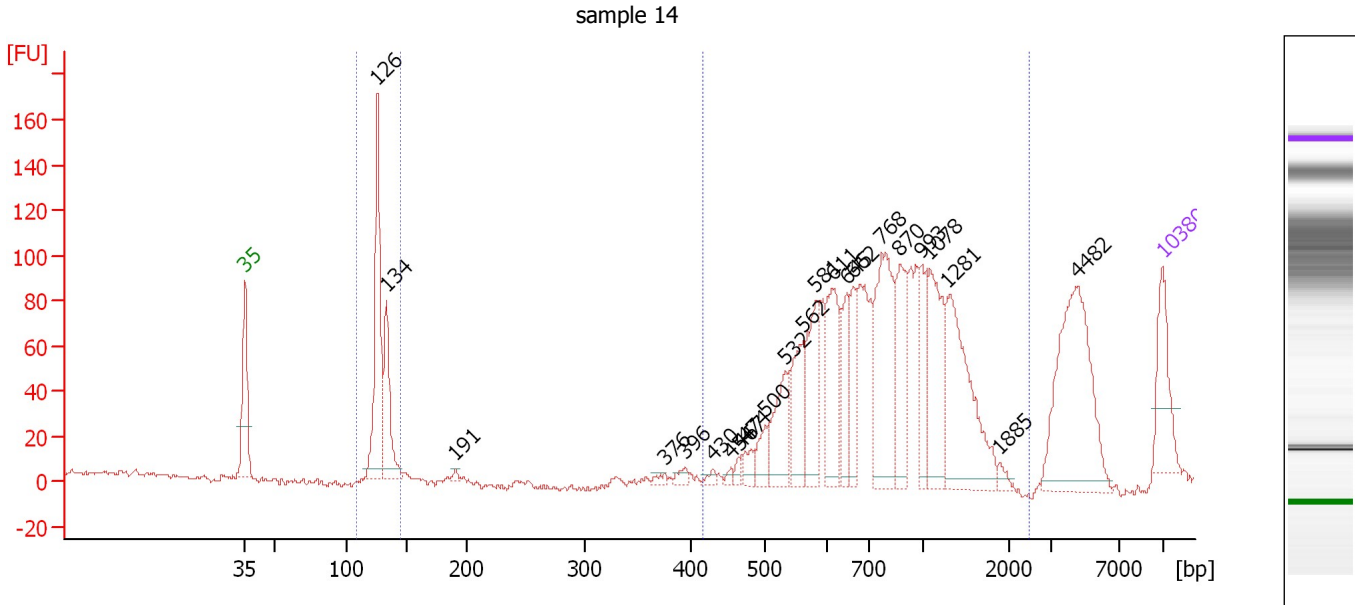
Region table for sample 2 : sample 13

From [bp]	To [bp]	Average Size [bp]	Molarity [pmol/l]	Conc. [pg/μl]	Corr. Area	% of Total	Size distribution in CV [%]	Color
116	142	126	40.6	3.37	2.0	18	0.6	Blue
481	2,546	1,029	0.3	0.18	0.2	2	5.6	Blue

Assay Class: High Sensitivity DNA Assay
 Data Path: C:\...ents and Settings\Bioanalyzer\2014-01-21\2014-01-21_003.xad

Created: 1/21/2014 3:39:23 PM
 Modified: 1/21/2014 4:25:39 PM

Electropherogram Summary Continued ...



Overall Results for sample 3 : sample 14

Number of peaks found: 23 Corr. Area 1: 236.5
 Noise: 1.2 Corr. Area 2: 1,401.5

Peak table for sample 3 : sample 14



Peak	Aligned Migration Time [s]	Size [bp]	Conc. [pg/μl]	Molarity [pmol/l]	Observations
1	43.00	35	125.00	5,411.3	Lower Marker
2	53.09	126	300.25	3,601.0	
3	53.78	134	145.13	1,642.7	
4	59.03	191	5.70	45.3	
5	75.03	376	7.74	31.2	
6	76.62	396	11.60	44.4	
7	78.69	430	8.45	29.8	
8	80.08	454	7.34	24.5	
9	80.81	467	9.89	32.1	
10	81.17	474	23.19	74.2	
11	82.68	500	35.71	108.2	
12	84.19	532	93.59	266.7	
13	85.61	562	89.37	241.1	
14	86.55	581	116.97	304.9	
15	87.81	611	130.31	322.9	
16	88.91	645	77.40	181.7	
17	89.44	662	63.04	144.4	
18	91.59	768	209.77	414.1	
19	92.98	870	116.16	202.4	
20	94.65	993	59.37	90.6	
21	95.26	1,078	136.57	192.0	
22	96.60	1,281	210.63	249.1	
23	100.59	1,885	8.96	7.2	
24	106.49	4,482	250.22	84.6	
25	113.00	10,380	75.00	10.9	Upper Marker

Assay Class: High Sensitivity DNA Assay
Data Path: C:\...ents and Settings\Bioanalyzer\2014-01-21\2014-01-21_003.xad

Created: 1/21/2014 3:39:23 PM
Modified: 1/21/2014 4:25:39 PM

Electropherogram Summary Continued ...

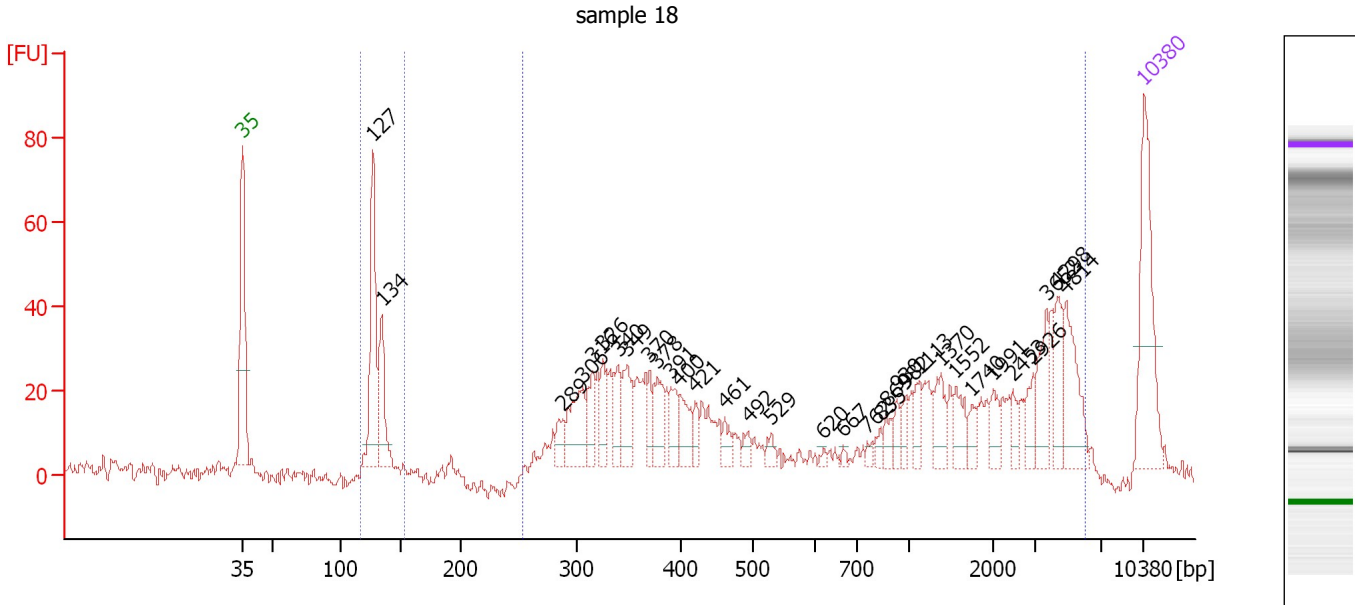
... Region table for sample 3 : sample 14

From [bp]	To [bp]	Average Size [bp]	Molarity [pmol/l]	Conc. [pg/μl]	Corr. Area	% of Total	Size distribution in CV [%]	Color
109	146	129	4,952.5	422.13	236.5	13	3.6	
418	2,448	859	3,192.6	1,576.69	1,401.5	74	36.5	

Assay Class: High Sensitivity DNA Assay
 Data Path: C:\...ents and Settings\Bioanalyzer\2014-01-21\2014-01-21_003.xad

Created: 1/21/2014 3:39:23 PM
 Modified: 1/21/2014 4:25:39 PM

Electropherogram Summary Continued ...



Overall Results for sample 4 : sample 18

Number of peaks found: 33 Corr. Area 1: 108.1
 Noise: 1.5 Corr. Area 2: 728.9

Peak table for sample 4 : sample 18

Peak	Aligned Migration Time [s]	Size [bp]	Conc. [pg/μl]	Molarity [pmol/l]	Observations
1	43.00	35	125.00	5,411.3	Lower Marker
2	53.14	127	127.47	1,522.4	
3	53.80	134	60.65	685.5	
4	67.88	289	17.81	93.4	
5	69.41	306	52.66	260.4	
6	70.20	316	30.31	145.3	
7	70.98	326	25.11	116.8	
8	72.14	340	26.99	120.2	
9	72.89	349	37.74	163.6	
10	74.58	370	19.59	80.1	
11	75.21	378	30.36	121.6	
12	76.28	391	24.38	94.4	
13	76.94	400	27.73	105.1	
14	78.14	421	13.37	48.2	
15	80.46	461	11.87	39.0	
16	82.24	492	8.74	26.9	
17	84.06	529	8.37	24.0	
18	88.08	620	3.31	8.1	
19	89.61	667	2.95	6.7	
20	91.52	762	4.14	8.2	
21	92.51	835	6.15	11.2	
22	92.96	869	10.52	18.4	
23	93.79	930	9.79	15.9	
24	94.50	982	9.85	15.2	
25	95.49	1,113	14.28	19.4	

Assay Class: High Sensitivity DNA Assay
 Data Path: C:\...ents and Settings\Bioanalyzer\2014-01-21\2014-01-21_003.xad



Created: 1/21/2014 3:39:23 PM
 Modified: 1/21/2014 4:25:39 PM

Electropherogram Summary Continued ...

... Peak table for sample 4 : sample 18

Peak	Aligned Migration Time [s]	Size [bp]	Conc. [pg/μl]	Molarity [pmol/l]	Observations
26	97.19	1,370	20.82	23.0	
27	98.39	1,552	18.38	17.9	
28	99.63	1,740	10.94	9.5	
29	101.29	1,991	12.46	9.5	
30	102.82	2,453	9.46	5.8	
31	104.35	2,926	13.89	7.2	
32	105.42	3,652	28.10	11.7	
33	106.25	4,298	26.30	9.3	
34	106.91	4,814	44.26	13.9	
35	113.00	10,380	75.00	10.9	Upper Marker

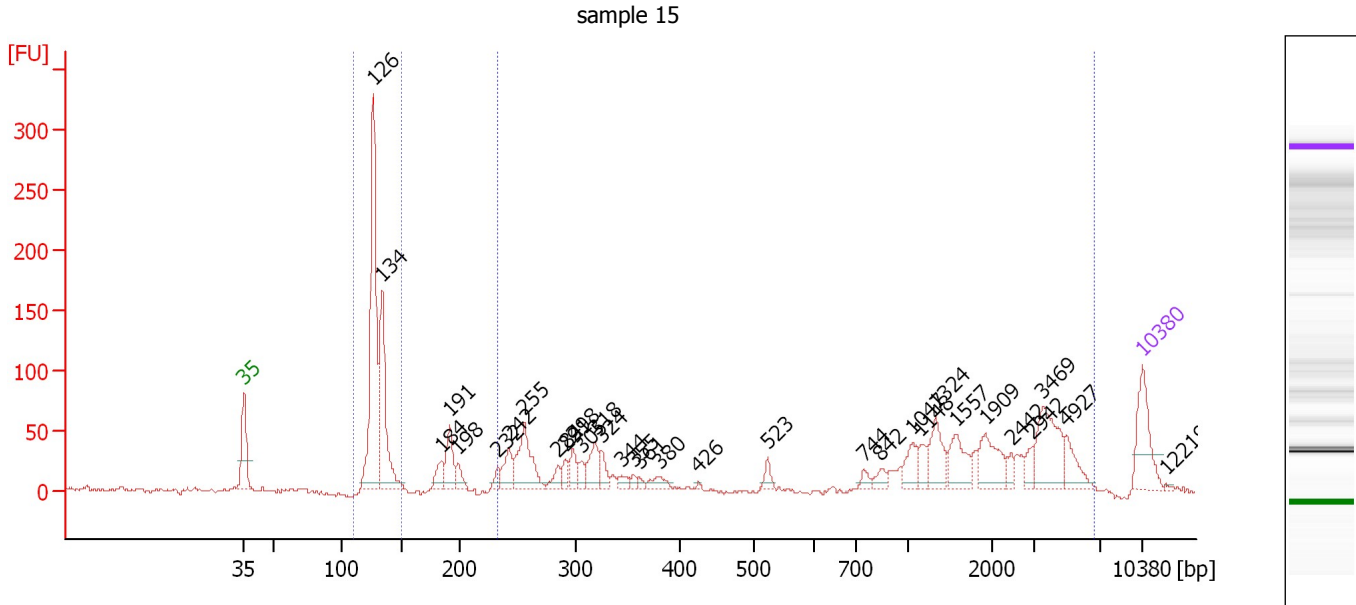
Region table for sample 4 : sample 18

From [bp]	To [bp]	Average Size [bp]	Molarity [pmol/l]	Conc. [pg/μl]	Corr. Area	% of Total	Size distribution in CV [%]	Color
115	153	129	2,234.6	190.91	108.1	13	3.6	
254	6,037	1,606	2,409.6	841.89	728.9	86	98.3	

Assay Class: High Sensitivity DNA Assay
 Data Path: C:\...ents and Settings\Bioanalyzer\2014-01-21\2014-01-21_003.xad

Created: 1/21/2014 3:39:23 PM
 Modified: 1/21/2014 4:25:39 PM

Electropherogram Summary Continued ...



Overall Results for sample 5 : sample 15

Number of peaks found: 32 Corr. Area 1: 525.5
 Noise: 2.2 Corr. Area 2: 1,071.0

Peak table for sample 5 : sample 15

Peak	Aligned Migration Time [s]	Size [bp]	Conc. [pg/μl]	Molarity [pmol/l]	Observations
1	43.00	35	125.00	5,411.3	Lower Marker
2	53.05	126	502.62	6,048.9	
3	53.76	134	271.30	3,077.2	
4	58.37	184	39.26	323.7	
5	59.04	191	72.80	577.5	
6	59.66	198	27.33	209.4	
7	62.77	232	18.23	118.9	
8	63.65	242	54.22	339.6	
9	64.85	255	128.18	760.9	
10	67.47	284	23.90	127.4	
11	68.05	291	23.90	124.6	
12	68.67	298	34.93	177.8	
13	69.30	305	21.14	105.0	
14	70.34	318	54.06	257.7	
15	70.83	324	32.58	152.3	
16	72.45	344	16.23	71.5	
17	73.33	355	8.77	37.5	
18	73.78	361	8.71	36.6	
19	75.36	380	20.97	83.6	
20	78.44	426	2.80	10.0	
21	83.80	523	17.72	51.3	
22	91.27	744	12.55	25.6	
23	92.60	842	17.39	31.3	
24	95.05	1,047	37.44	54.2	
25	95.72	1,148	22.61	29.8	

Assay Class: High Sensitivity DNA Assay
 Data Path: C:\...ents and Settings\Bioanalyzer\2014-01-21\2014-01-21_003.xad



Created: 1/21/2014 3:39:23 PM
 Modified: 1/21/2014 4:25:39 PM

Electropherogram Summary Continued ...

... Peak table for sample 5 : sample 15

Peak	Aligned Migration Time [s]	Size [bp]	Conc. [pg/μl]	Molarity [pmol/l]	Observations
26	96.88	1,324	58.79	67.3	
27	98.42	1,557	57.50	56.0	
28	100.74	1,909	63.35	50.3	
29	102.78	2,442	12.75	7.9	
30	104.40	2,942	17.63	9.1	
31	105.19	3,469	100.99	44.1	
32	107.06	4,927	39.51	12.1	
33	113.00	10,380	75.00	10.9	Upper Marker
34	114.79	12,219	0.00	0.0	

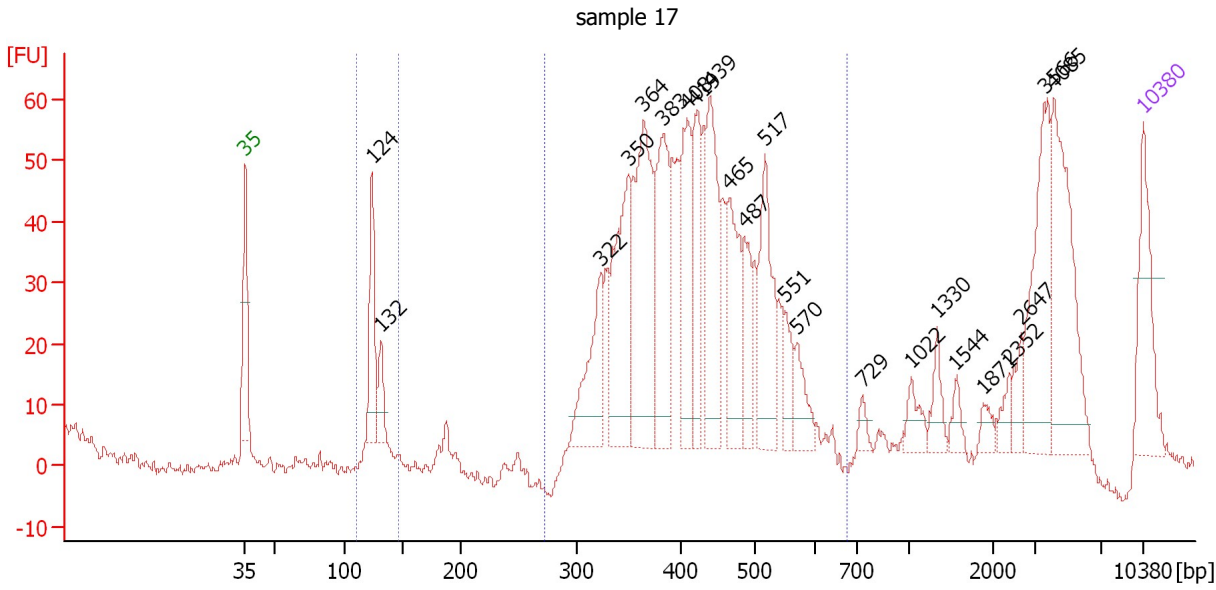
Region table for sample 5 : sample 15

From [bp]	To [bp]	Average Size [bp]	Molarity [pmol/l]	Conc. [pg/μl]	Corr. Area	% of Total	Size distribution in CV [%]	Color
110	150	129	9,228.6	787.89	525.5	30	4.3	
232	6,573	1,754	3,144.6	1,046.44	1,071.0	61	87.1	

Assay Class: High Sensitivity DNA Assay
 Data Path: C:\...ents and Settings\Bioanalyzer\2014-01-21\2014-01-21_003.xad

Created: 1/21/2014 3:39:23 PM
 Modified: 1/21/2014 4:25:39 PM

Electropherogram Summary Continued ...



Overall Results for sample 6 : sample 17

Number of peaks found: 23 Corr. Area 1: 50.3
 Noise: 1.2 Corr. Area 2: 880.2

Peak table for sample 6 : sample 17



Peak	Aligned Migration Time [s]	Size [bp]	Conc. [pg/μl]	Molarity [pmol/l]	Observations
1	43.00	35	125.00	5,411.3	Lower Marker
2	52.89	124	109.36	1,335.3	
3	53.59	132	39.23	451.0	
4	70.67	322	114.37	538.2	
5	72.91	350	186.50	808.0	
6	74.03	364	238.24	992.7	
7	75.61	383	170.61	674.7	
8	77.44	408	123.55	458.7	
9	78.06	419	103.56	374.4	
10	79.23	439	146.14	503.9	
11	80.68	465	116.24	378.8	
12	81.93	487	64.16	199.7	
13	83.50	517	127.40	373.1	
14	85.08	551	39.63	109.1	
15	86.00	570	39.67	105.5	
16	91.07	729	12.35	25.7	
17	94.89	1,022	23.40	34.7	
18	96.92	1,330	25.27	28.8	
19	98.34	1,544	14.43	14.2	
20	100.50	1,871	12.72	10.3	
21	102.49	2,352	15.27	9.8	
22	103.45	2,647	21.81	12.5	
23	105.31	3,566	122.17	51.9	
24	105.98	4,085	145.12	53.8	
25	113.00	10,380	75.00	10.9	Upper Marker

Assay Class: High Sensitivity DNA Assay
Data Path: C:\...ents and Settings\Bioanalyzer\2014-01-21\2014-01-21_003.xad

Created: 1/21/2014 3:39:23 PM
Modified: 1/21/2014 4:25:39 PM

Electropherogram Summary Continued ...

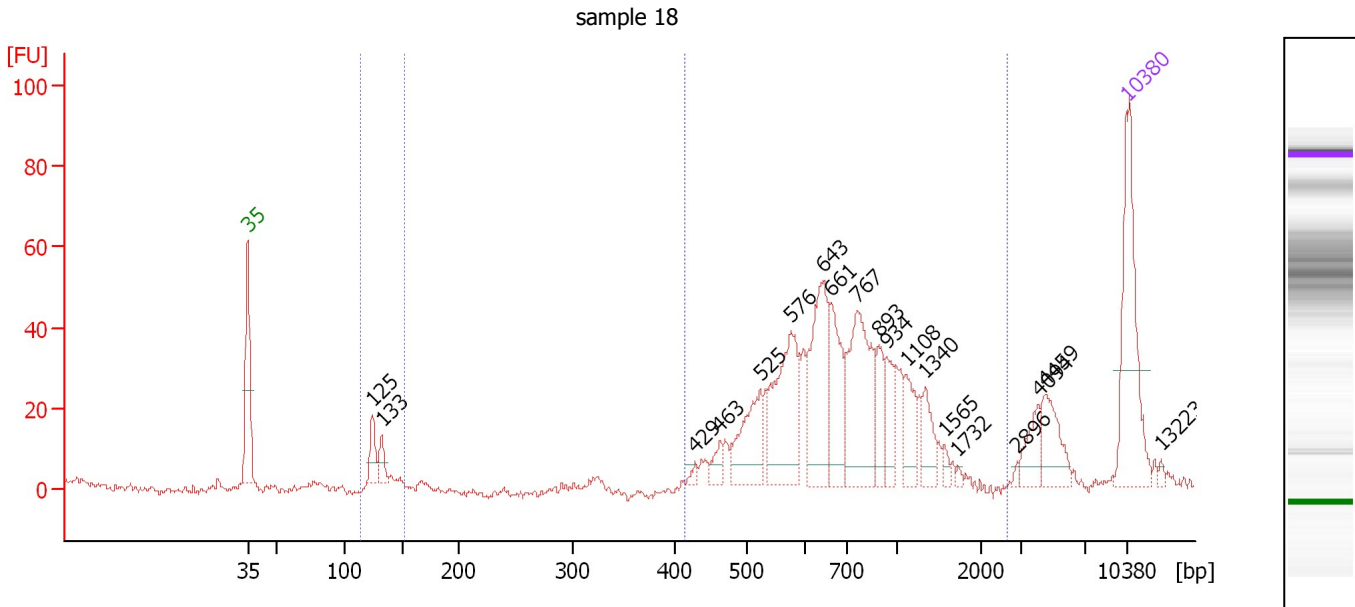
... Region table for sample 6 : sample 17

From [bp]	To [bp]	Average Size [bp]	Molarity [pmol/l]	Conc. [pg/μl]	Corr. Area	% of Total	Size distribution in CV [%]	Color
111	146	126	1,685.5	140.31	50.3	4	3.0	
271	676	422	6,541.9	1,760.42	880.2	73	16.8	

Assay Class: High Sensitivity DNA Assay
 Data Path: C:\...ents and Settings\Bioanalyzer\2014-01-21\2014-01-21_003.xad

Created: 1/21/2014 3:39:23 PM
 Modified: 1/21/2014 4:25:39 PM

Electropherogram Summary Continued ...



Overall Results for sample 7 : sample 18

Number of peaks found: 19 Corr. Area 1: 28.2
 Noise: 1.0 Corr. Area 2: 601.6

Peak table for sample 7 : sample 18

Peak	Aligned Migration Time [s]	Size [bp]	Conc. [pg/μl]	Molarity [pmol/l]	Observations
1	43.00	35	125.00	5,411.3	Lower Marker
2	52.94	125	23.25	282.6	
3	53.66	133	15.67	179.2	
4	78.64	429	4.36	15.4	
5	80.59	463	10.93	35.7	
6	83.86	525	54.44	157.2	
7	86.28	576	88.62	233.2	
8	88.83	643	82.80	195.1	
9	89.43	661	55.06	126.1	
10	91.59	767	93.79	185.2	
11	93.29	893	22.47	38.1	
12	93.84	934	22.83	37.0	
13	95.46	1,108	25.20	34.4	
14	96.99	1,340	19.32	21.8	
15	98.47	1,565	4.79	4.6	
16	99.58	1,732	1.85	1.6	
17	104.25	2,896	1.90	1.0	
18	105.99	4,094	17.55	6.5	
19	106.46	4,459	28.04	9.5	
20	113.00	10,380	75.00	10.9	Upper Marker
21	115.76	13,223	0.00	0.0	

Region table for sample 7 : sample 18

From [bp]	To [bp]	Average Size [bp]	Molarity [pmol/l]	Conc. [pg/μl]	Corr. Area	% of Total	Size distribution in CV [%]	Color
113	152	129	486.6	41.58	28.2	4	4.7	Blue

Assay Class: High Sensitivity DNA Assay
Data Path: C:\...ents and Settings\Bioanalyzer\2014-01-21\2014-01-21_003.xad

Created: 1/21/2014 3:39:23 PM
Modified: 1/21/2014 4:25:39 PM

Electropherogram Summary Continued ...

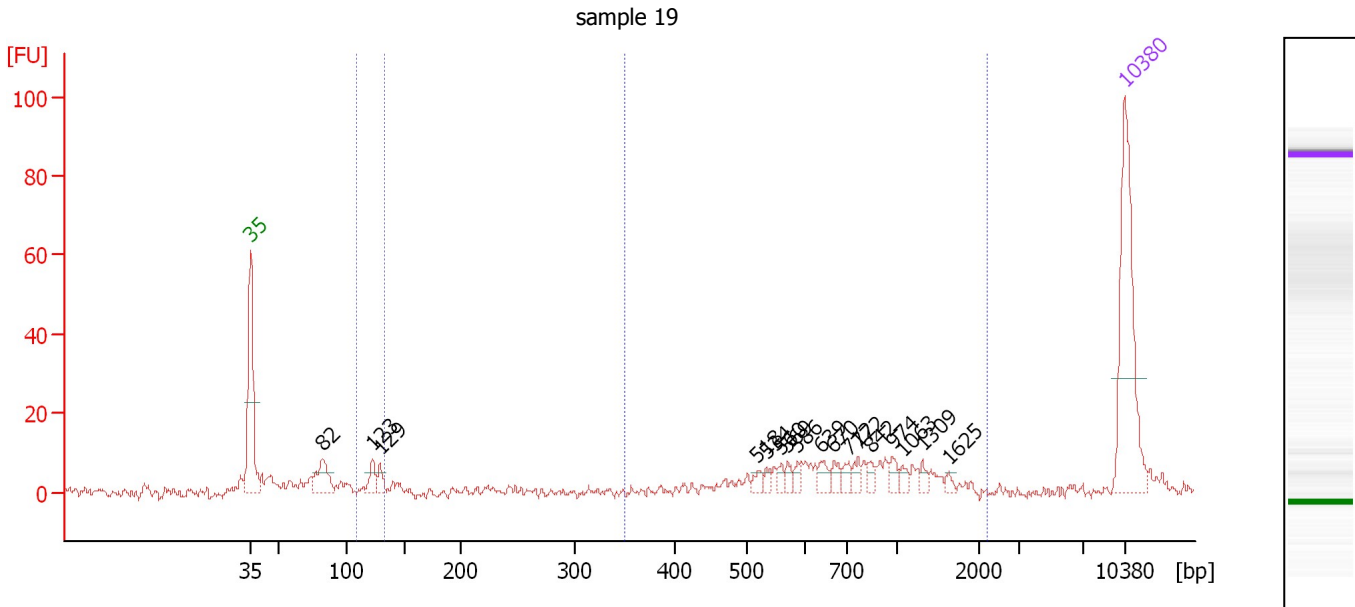
... Region table for sample 7 : sample 18

From [bp]	To [bp]	Average Size [bp]	Molarity [pmol/l]	Conc. [pg/μl]	Corr. Area	% of Total	Size distribution in CV [%]	Color
414	2,640	772	1,271.5	571.76	601.6	85	36.3	■

Assay Class: High Sensitivity DNA Assay
 Data Path: C:\...ents and Settings\Bioanalyzer\2014-01-21\2014-01-21_003.xad

Created: 1/21/2014 3:39:23 PM
 Modified: 1/21/2014 4:25:39 PM

Electropherogram Summary Continued ...



Overall Results for sample 8 : sample 19

Number of peaks found: 17 Corr. Area 1: 11.4
 Noise: 1.3 Corr. Area 2: 97.2

Peak table for sample 8 : sample 19

Peak	Aligned Migration Time [s]	Size [bp]	Conc. [pg/μl]	Molarity [pmol/l]	Observations
1	43.00	35	125.00	5,411.3	Lower Marker
2	48.72	82	27.14	502.5	
3	52.77	123	12.10	149.2	
4	53.37	129	8.57	100.4	
5	83.55	518	5.77	16.9	
6	84.27	534	3.60	10.2	
7	85.51	560	4.05	11.0	
8	85.98	569	4.93	13.1	
9	86.79	586	4.69	12.1	
10	88.71	639	7.69	18.2	
11	89.70	670	6.62	15.0	
12	90.85	712	5.72	12.2	
13	91.66	772	5.91	11.6	
14	92.60	842	5.33	9.6	
15	94.39	974	5.82	9.0	
16	95.16	1,063	4.15	5.9	
17	96.78	1,309	3.51	4.1	
18	98.87	1,625	2.69	2.5	
19	113.00	10,380	75.00	10.9	Upper Marker

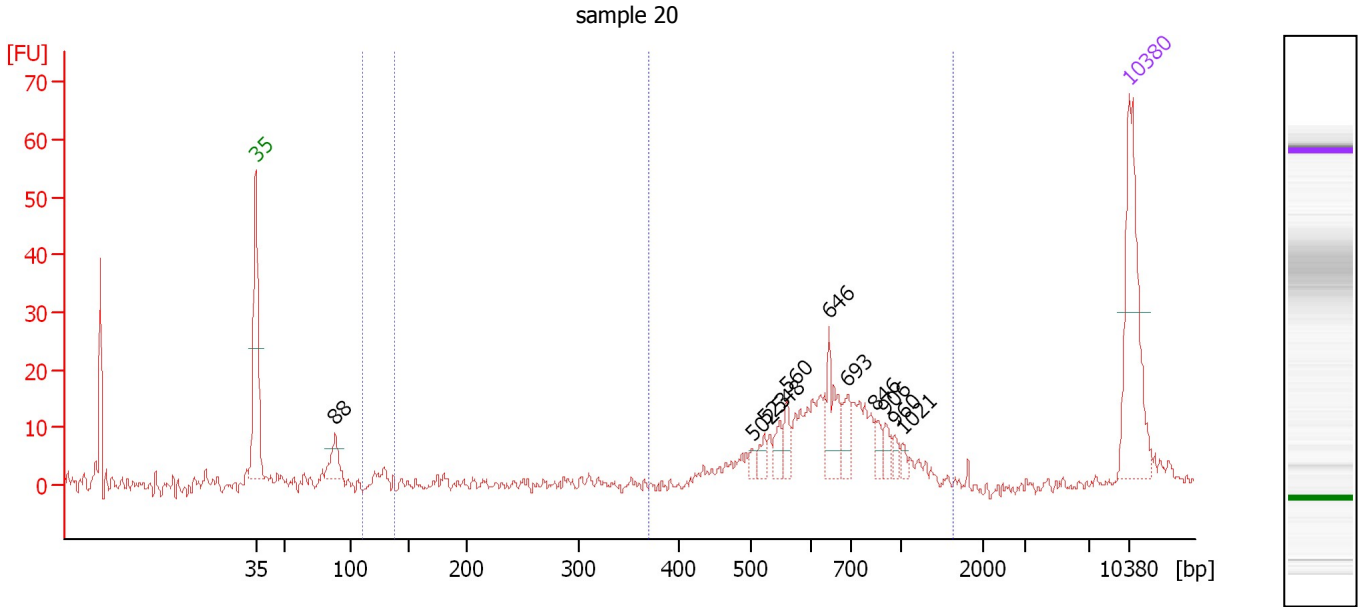
Region table for sample 8 : sample 19

From [bp]	To [bp]	Average Size [bp]	Molarity [pmol/l]	Conc. [pg/μl]	Corr. Area	% of Total	Size distribution in CV [%]	Color
109	134	125	204.2	16.89	11.4	7	3.4	Blue
350	2,193	817	194.5	91.00	97.2	63	37.7	Blue

Assay Class: High Sensitivity DNA Assay
 Data Path: C:\...ents and Settings\Bioanalyzer\2014-01-21\2014-01-21_003.xad

Created: 1/21/2014 3:39:23 PM
 Modified: 1/21/2014 4:25:39 PM

Electropherogram Summary Continued ...



Overall Results for sample 9 : sample 20

Number of peaks found: 11 Corr. Area 1: 3.2
 Noise: 1.2 Corr. Area 2: 170.9

Peak table for sample 9 : sample 20

Peak	Aligned Migration Time [s]	Size [bp]	Conc. [pg/μl]	Molarity [pmol/l]	Observations
1	43.00	35	125.00	5,411.3	Lower Marker
2	49.37	88	23.61	407.2	
3	82.79	502	4.76	14.4	
4	83.77	523	9.24	26.8	
5	84.97	548	11.05	30.5	
6	85.52	560	12.80	34.6	
7	88.94	646	30.95	72.6	
8	90.44	693	16.38	35.8	
9	92.66	846	8.28	14.8	
10	93.47	906	9.08	15.2	
11	94.20	960	5.49	8.7	
12	94.88	1,021	4.19	6.2	
13	113.00	10,380	75.00	10.9	Upper Marker

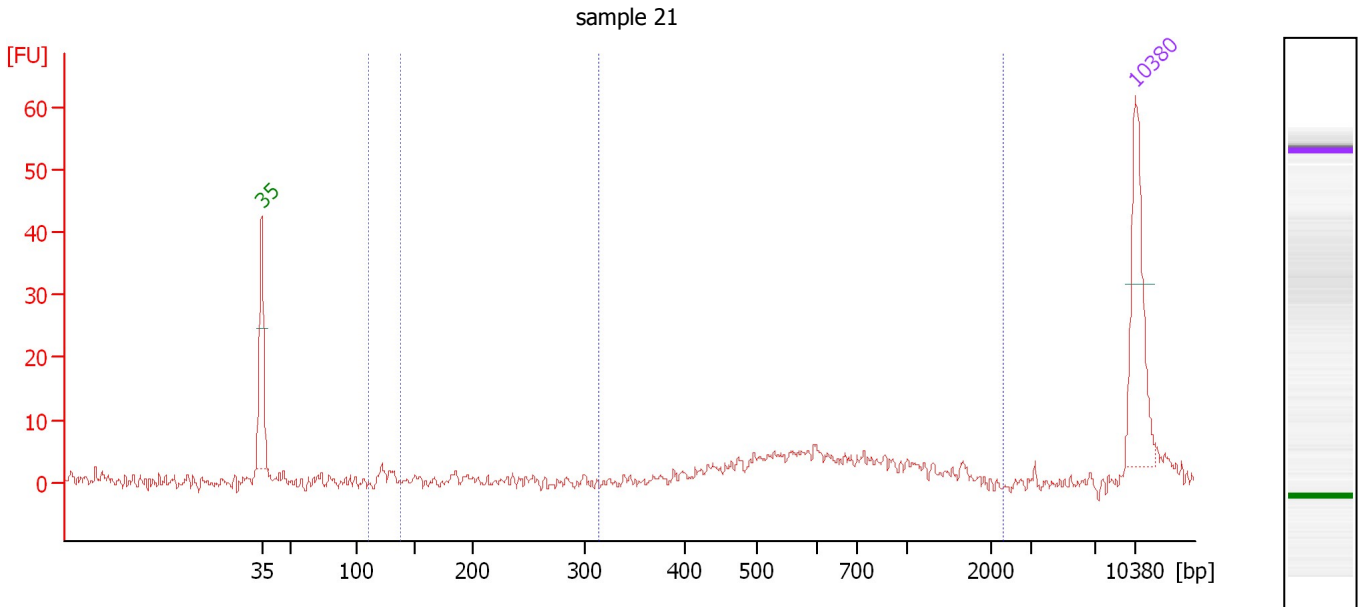
Region table for sample 9 : sample 20

From [bp]	To [bp]	Average Size [bp]	Molarity [pmol/l]	Conc. [pg/μl]	Corr. Area	% of Total	Size distribution in CV [%]	Color
110	138	126	81.6	6.80	3.2	1	3.5	Blue
370	1,616	688	550.8	234.36	170.9	73	25.1	Dark Blue

Assay Class: High Sensitivity DNA Assay
 Data Path: C:\...ents and Settings\Bioanalyzer\2014-01-21\2014-01-21_003.xad

Created: 1/21/2014 3:39:23 PM
 Modified: 1/21/2014 4:25:39 PM

Electropherogram Summary Continued ...



Overall Results for sample 10 : sample 21

Number of peaks found: 0 Corr. Area 1: 2.0
 Noise: 1.0 Corr. Area 2: 45.5

Peak table for sample 10 : sample 21

Peak	Aligned Migration Time [s]	Size [bp]	Conc. [pg/μl]	Molarity [pmol/l]	Observations
1	43.00	35	125.00	5,411.3	Lower Marker
2	113.00	10,380	75.00	10.9	Upper Marker

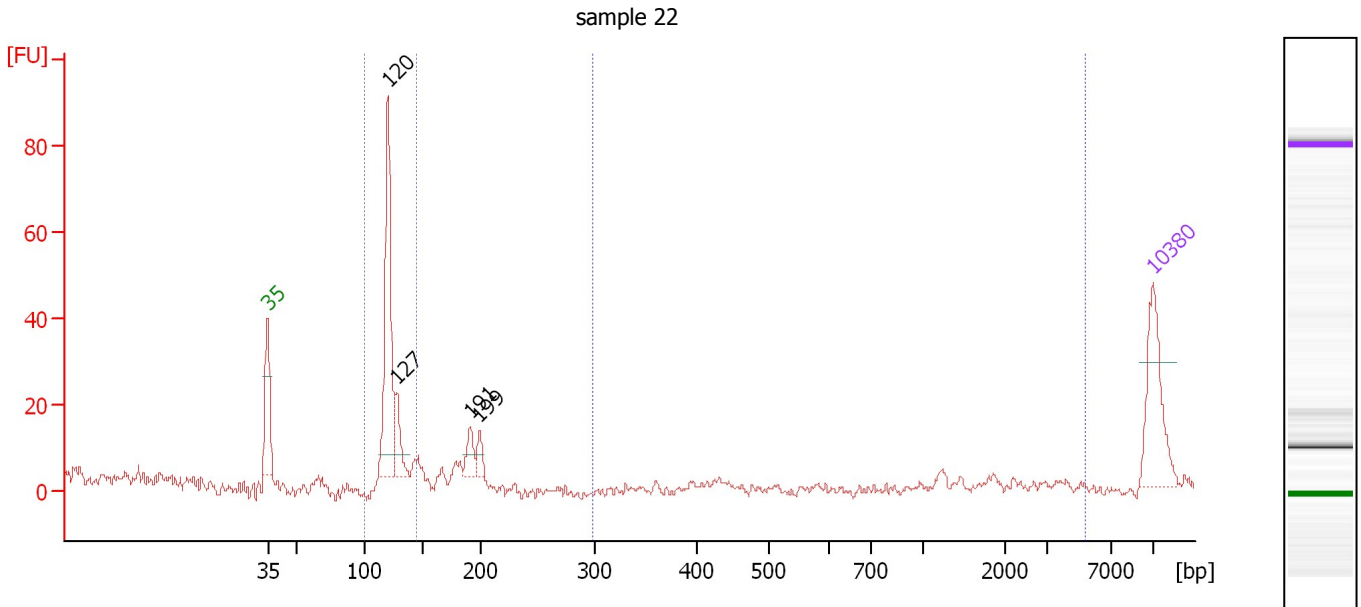
Region table for sample 10 : sample 21

From [bp]	To [bp]	Average Size [bp]	Molarity [pmol/l]	Conc. [pg/μl]	Corr. Area	% of Total	Size distribution in CV [%]	Color
110	138	125	65.2	5.39	2.0	4	3.5	Blue
313	2,321	670	200.4	79.85	45.5	81	35.3	Dark Blue

Assay Class: High Sensitivity DNA Assay
 Data Path: C:\...ents and Settings\Bioanalyzer\2014-01-21\2014-01-21_003.xad

Created: 1/21/2014 3:39:23 PM
 Modified: 1/21/2014 4:25:39 PM

Electropherogram Summary Continued ...



Overall Results for sample 11 : sample 22

Number of peaks found: 4 Corr. Area 1: 105.8
 Noise: 1.3 Corr. Area 2: 1.8

Peak table for sample 11 : sample 22

Peak	Aligned Migration Time [s]	Size [bp]	Conc. [pg/μl]	Molarity [pmol/l]	Observations
1	43.00	35	125.00	5,411.3	Lower Marker
2	52.52	120	244.69	3,085.8	
3	53.20	127	51.47	611.7	
4	59.01	191	30.49	242.2	
5	59.73	199	19.48	148.6	
6	113.00	10,380	75.00	10.9	Upper Marker

Region table for sample 11 : sample 22

From [bp]	To [bp]	Average Size [bp]	Molarity [pmol/l]	Conc. [pg/μl]	Corr. Area	% of Total	Size distribution in CV [%]	Color
101	145	122	3,640.3	292.95	105.8	80	4.1	Blue
299	5,357	1,482	2.8	2.74	1.8	1	23.4	Dark Blue

Assay Class: High Sensitivity DNA Assay
Data Path: C:\...ents and Settings\Bioanalyzer\2014-01-21\2014-01-21_003.xad

Created: 1/21/2014 3:39:23 PM
Modified: 1/21/2014 4:25:39 PM

Gel Image

