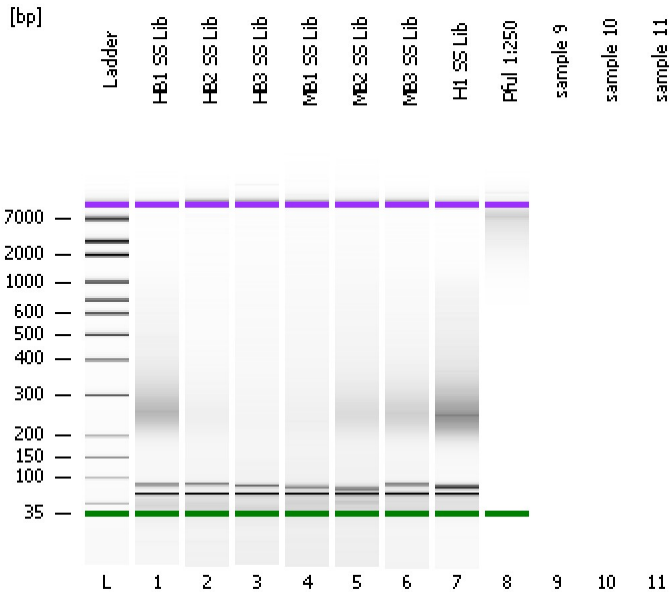


Assay Class: High Sensitivity DNA Assay  
Data Path: C:\...ents and Settings\Bioanalyzer\2014-01-21\2014-01-21\_005.xad

Created: 1/21/2014 5:38:30 PM  
Modified: 1/22/2014 9:46:33 AM

### Electrophoresis File Run Summary



#### Instrument Information:

Instrument Name: DE13701086      Firmware: C.01.069  
Serial#: DE13701086      Type: G2938B

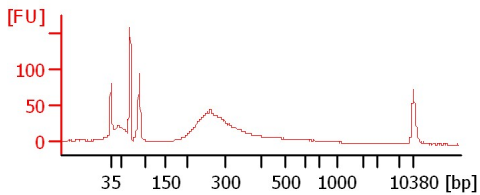
#### Assay Information:

Assay Origin Path: C:\Program Files\Agilent\2100 bioanalyzer\2100 expert\assays\dsDNA\High Sensitivity DNA.xsy  
Assay Class: High Sensitivity DNA Assay  
Version: 1.03  
Assay Comments: Copyright © 2003-2010 Agilent Technologies

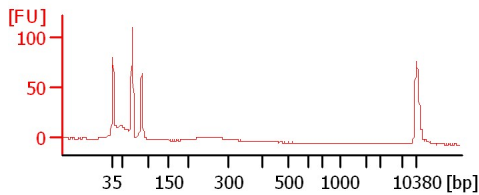
#### Chip Information:

Chip Lot #:      Reagent Kit Lot #:      Chip Comments:

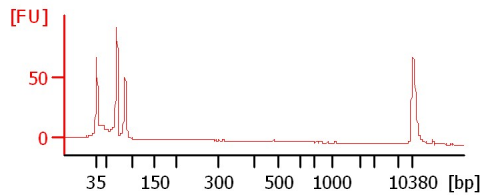
HB1 SS Lib



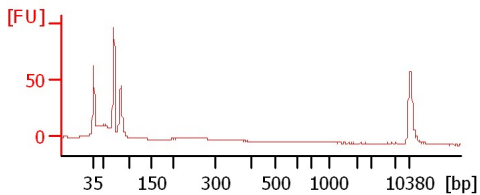
HB2 SS Lib



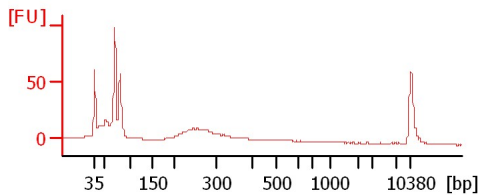
HB3 SS Lib



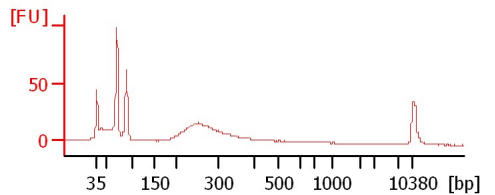
MB1 SS Lib



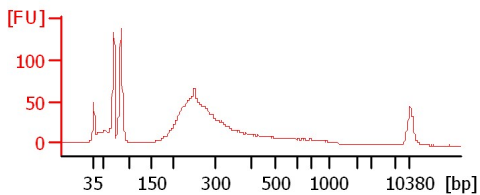
MB2 SS Lib



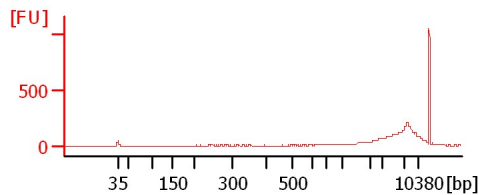
MB3 SS Lib



H1 SS Lib



Pful 1:250



Assay Class: High Sensitivity DNA Assay  
Data Path: C:\...ents and Settings\Bioanalyzer\2014-01-21\2014-01-21\_005.xad

Created: 1/21/2014 5:38:30 PM  
Modified: 1/22/2014 9:46:33 AM

**Electrophoresis File Run Summary (Chip Summary)**

Sample Name	Sample Comment	Rest. Digest	Status	Observation	Result Label	Result Color
HB1 SS Lib		<input type="checkbox"/>	✓			
HB2 SS Lib		<input type="checkbox"/>	✓			
HB3 SS Lib		<input type="checkbox"/>	✓			
MB1 SS Lib		<input type="checkbox"/>	✓			
MB2 SS Lib		<input type="checkbox"/>	✓			
MB3 SS Lib		<input type="checkbox"/>	✓			
H1 SS Lib		<input type="checkbox"/>	✓			
Pful 1:250		<input type="checkbox"/>	✓			
sample 9		<input type="checkbox"/>				
sample 10		<input type="checkbox"/>				
sample 11		<input type="checkbox"/>				
Ladder		<input type="checkbox"/>	✓			

**Chip Lot #** **Reagent Kit Lot #**

**Chip Comments :**

Assay Class: High Sensitivity DNA Assay  
 Data Path: C:\...ents and Settings\Bioanalyzer\2014-01-21\2014-01-21\_005.xad

Created: 1/21/2014 5:38:30 PM  
 Modified: 1/22/2014 9:46:33 AM

**Electrophoresis Assay Details**

**General Analysis Settings**

Number of Available Sample and Ladder Wells (Max.) : 12  
 Minimum Visible Range [s] : 32  
 Maximum Visible Range [s] : 138  
 Start Analysis Time Range [s] : 33  
 End Analysis Time Range [s] : 137.5  
 Ladder Concentration [pg/μl] : 1950  
 Uses Standard Area for Ladder Fragments  
 Lower Marker Concentration [pg/μl] : 125  
 Upper Marker Concentration [pg/μl] : 75  
 Used Upper Marker for Quantitation  
 Standard Curve Fit is Point to Point  
 Show Data Aligned to Lower and Upper Marker

**Integrator Settings**

Integration Start Time [s] : 33.05  
 Integration End Time [s] : 137  
 Slope Threshold : 0.8  
 Height Threshold [FU] : 5  
 Area Threshold : 0.1  
 Width Threshold [s] : 0.6  
 Baseline Plateau [s] : 0.5

**Filter Settings**

Filter Width [s] : 0.5  
 Polynomial Order : 4

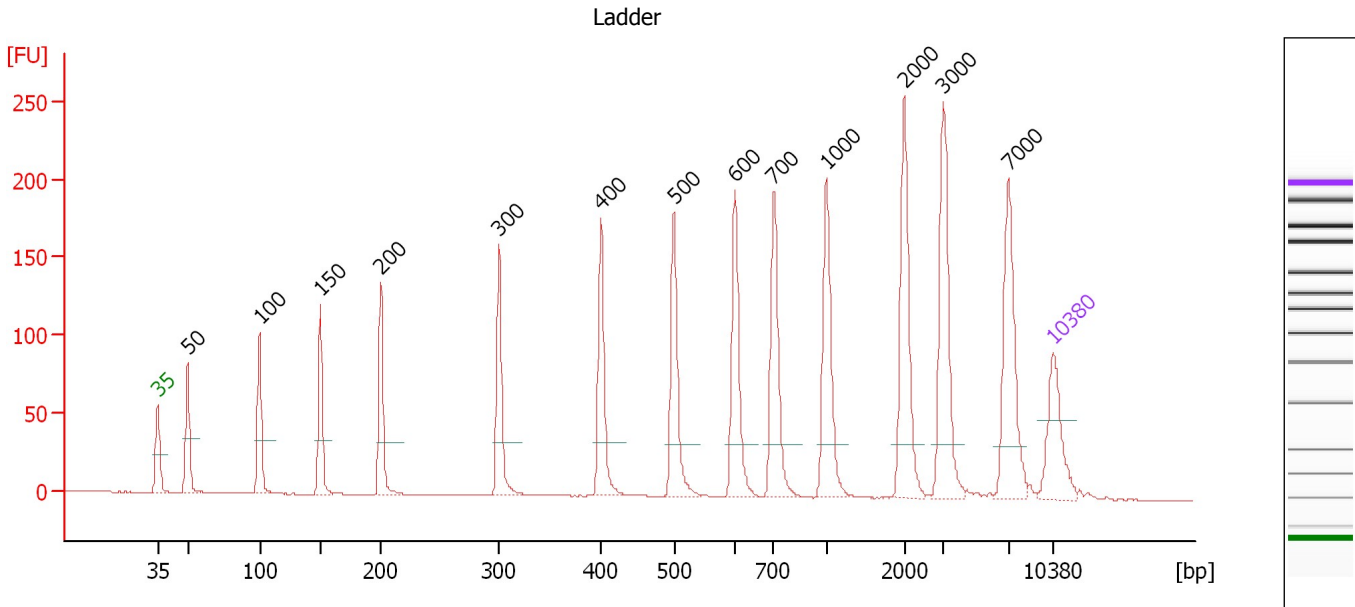
**Ladder**

Ladder Peak	Size	Area
1	35	160
2	50	210
3	100	208
4	150	221
5	200	242
6	300	270
7	400	305
8	500	306
9	600	336
10	700	321
11	1000	366
12	2000	413
13	3000	411
14	7000	400
15	10380	214

Assay Class: High Sensitivity DNA Assay  
 Data Path: C:\...ents and Settings\Bioanalyzer\2014-01-21\2014-01-21\_005.xad

Created: 1/21/2014 5:38:30 PM  
 Modified: 1/22/2014 9:46:33 AM

**Electropherogram Summary**



**Overall Results for Ladder**

Noise: 0.1

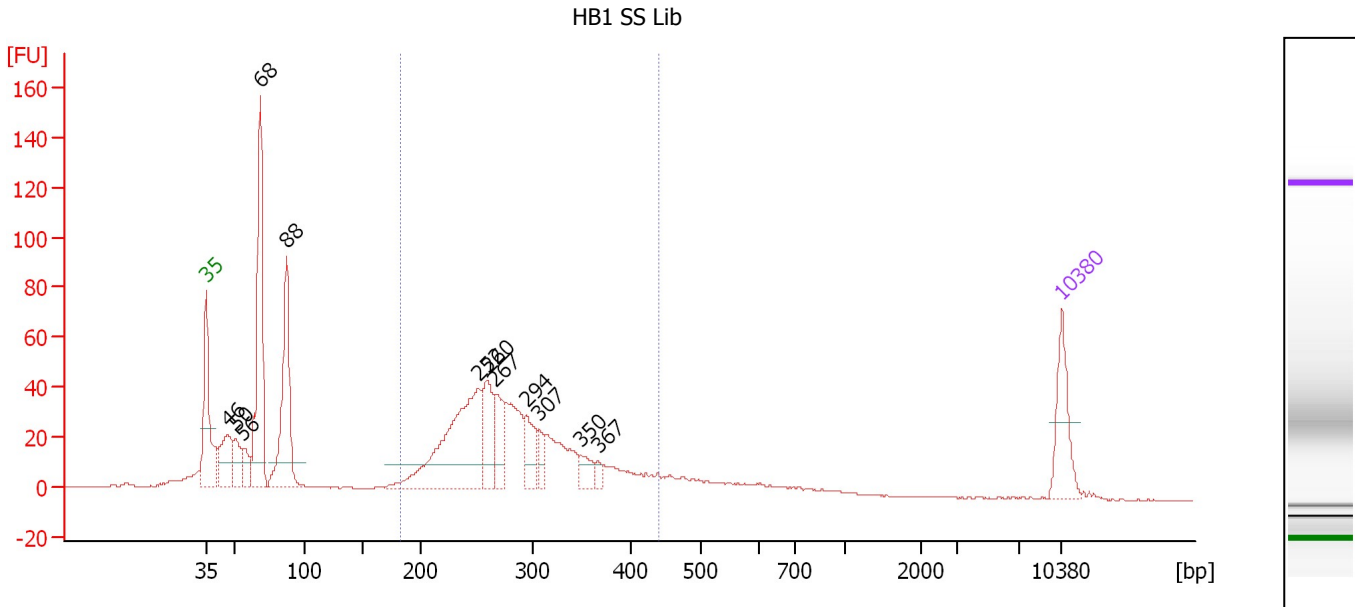
**Peak table for Ladder**

Peak	Aligned Migration Time [s]	Size [bp]	Conc. [pg/μl]	Molarity [pmol/l]	Observations
1	43.00	35	125.00	5,411.3	Lower Marker
2	45.36	50	150.00	4,545.5	Ladder Peak
3	50.98	100	150.00	2,272.7	Ladder Peak
4	55.74	150	150.00	1,515.2	Ladder Peak
5	60.49	200	150.00	1,136.4	Ladder Peak
6	69.69	300	150.00	757.6	Ladder Peak
7	77.67	400	150.00	568.2	Ladder Peak
8	83.39	500	150.00	454.5	Ladder Peak
9	88.18	600	150.00	378.8	Ladder Peak
10	91.19	700	150.00	324.7	Ladder Peak
11	95.29	1,000	150.00	227.3	Ladder Peak
12	101.40	2,000	150.00	113.6	Ladder Peak
13	104.45	3,000	150.00	75.8	Ladder Peak
14	109.55	7,000	150.00	32.5	Ladder Peak
15	113.00	10,380	75.00	10.9	Upper Marker

Assay Class: High Sensitivity DNA Assay  
 Data Path: C:\...ents and Settings\Bioanalyzer\2014-01-21\2014-01-21\_005.xad

Created: 1/21/2014 5:38:30 PM  
 Modified: 1/22/2014 9:46:33 AM

**Electropherogram Summary Continued ...**



**Setpoint Deviations for sample 1 : HB1 SS Lib**

Height Threshold [FU] : 10

**Overall Results for sample 1 : HB1 SS Lib**

Number of peaks found: 12      Corr. Area 1: 672.9  
 Noise: 0.2

**Peak table for sample 1 : HB1 SS Lib**

Peak	Aligned Migration Time [s]	Size [bp]	Conc. [pg/μl]	Molarity [pmol/l]	Observations
1	43.00	35	125.00	5,411.3	Lower Marker
2	44.79	46	117.07	3,823.7	
3	45.40	50	62.21	1,870.7	
4	46.01	56	46.25	1,255.6	
5	47.40	68	400.76	8,901.2	
6	49.59	88	300.59	5,199.2	
7	65.24	252	383.90	2,311.3	
8	66.03	260	109.24	636.2	
9	66.64	267	78.54	446.0	
10	69.17	294	70.64	363.7	
11	70.21	307	34.74	171.7	
12	73.66	350	36.64	158.7	
13	75.06	367	13.11	54.1	
14	113.00	10,380	75.00	10.9	Upper Marker

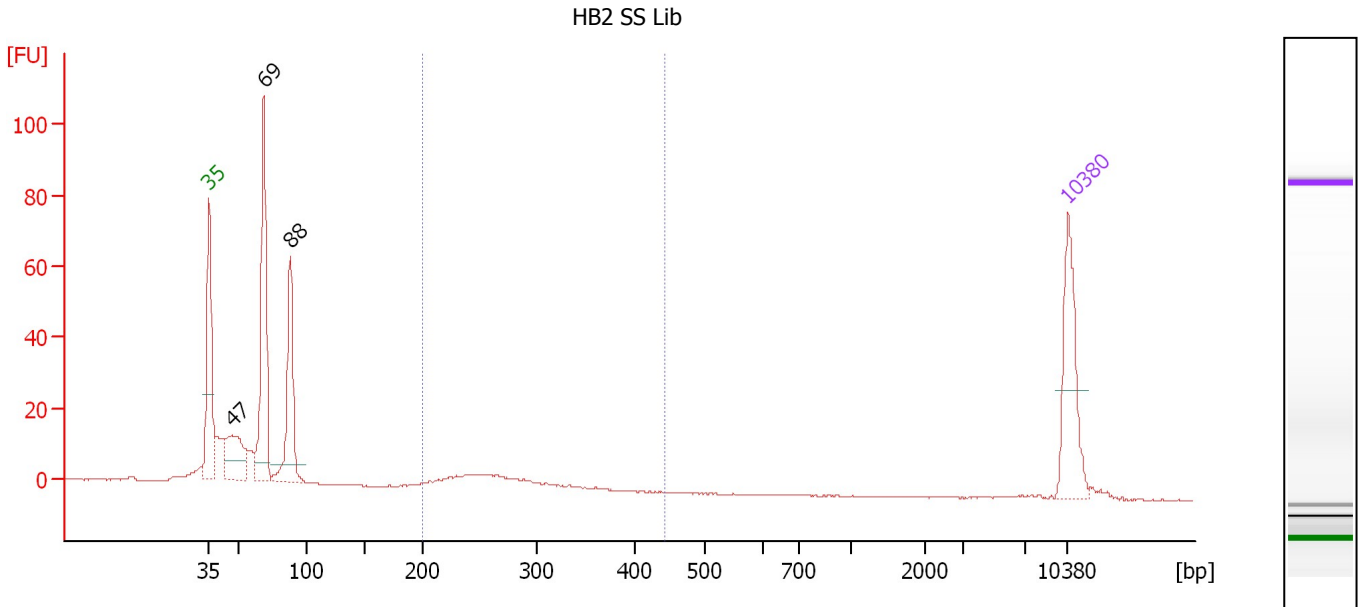
**Region table for sample 1 : HB1 SS Lib**

From [bp]	To [bp]	Average Size [bp]	Molarity [pmol/l]	Conc. [pg/μl]	Corr. Area	% of Total	Size distribution in CV [%]	Color
183	440	286	6,305.1	1,140.67	672.9	53	19.2	Blue

Assay Class: High Sensitivity DNA Assay  
 Data Path: C:\...ents and Settings\Bioanalyzer\2014-01-21\2014-01-21\_005.xad

Created: 1/21/2014 5:38:30 PM  
 Modified: 1/22/2014 9:46:33 AM

**Electropherogram Summary Continued ...**



**Overall Results for sample 2 : HB2 SS Lib**

Number of peaks found: 3                      Corr. Area 1: 43.3  
 Noise: 0.2

**Peak table for sample 2 : HB2 SS Lib**

Peak	Aligned Migration Time [s]	Size [bp]	Conc. [pg/μl]	Molarity [pmol/l]	Observations
1	43.00	35	125.00	5,411.3	Lower Marker
2	44.91	47	88.47	2,840.9	
3	47.48	69	228.13	5,018.9	
4	49.65	88	143.59	2,466.9	
5	113.00	10,380	75.00	10.9	Upper Marker

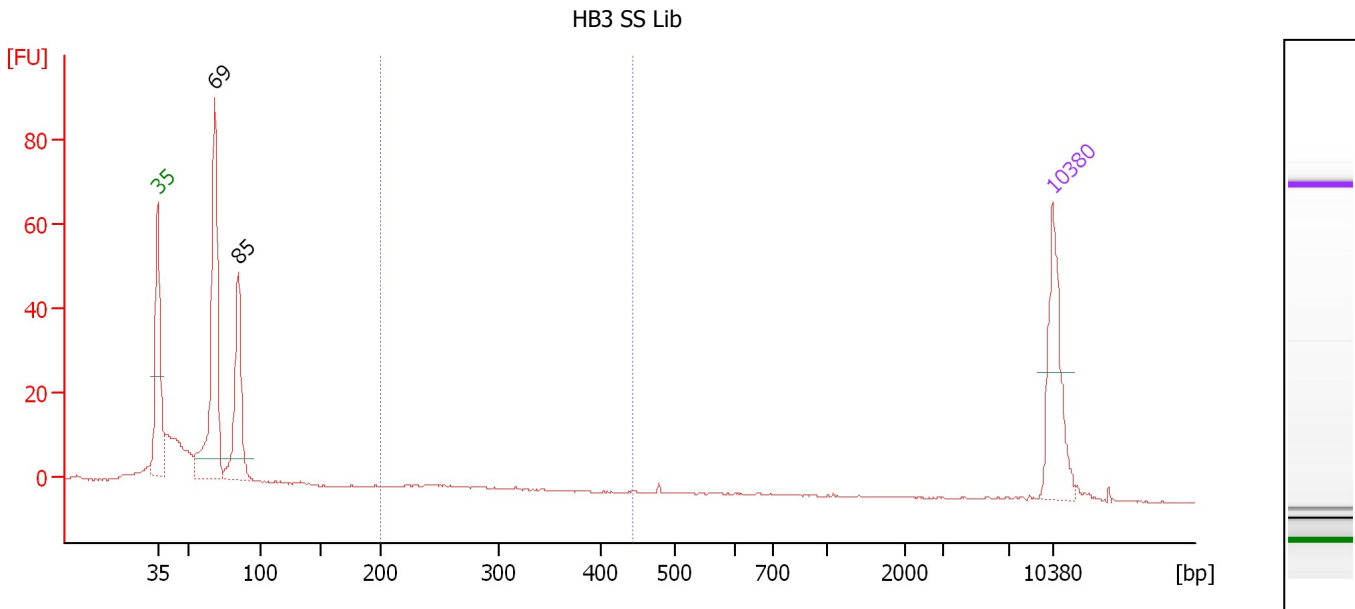
**Region table for sample 2 : HB2 SS Lib**

From [bp]	To [bp]	Average Size [bp]	Molarity [pmol/l]	Conc. [pg/μl]	Corr. Area	% of Total	Size distribution in CV [%]	Color
200	443	262	377.3	64.54	43.3	12	13.2	Blue

Assay Class: High Sensitivity DNA Assay  
 Data Path: C:\...ents and Settings\Bioanalyzer\2014-01-21\2014-01-21\_005.xad

Created: 1/21/2014 5:38:30 PM  
 Modified: 1/22/2014 9:46:33 AM

**Electropherogram Summary Continued ...**



**Overall Results for sample 3 : HB3 SS Lib**

Number of peaks found: 2                      Corr. Area 1: 0.2  
 Noise: 0.2

**Peak table for sample 3 : HB3 SS Lib**

Peak	Aligned Migration Time [s]	Size [bp]	Conc. [pg/μl]	Molarity [pmol/l]	Observations
1	43.00	35	125.00	5,411.3	Lower Marker
2	47.48	69	268.96	5,918.6	
3	49.32	85	143.72	2,554.9	
4	113.00	10,380	75.00	10.9	Upper Marker

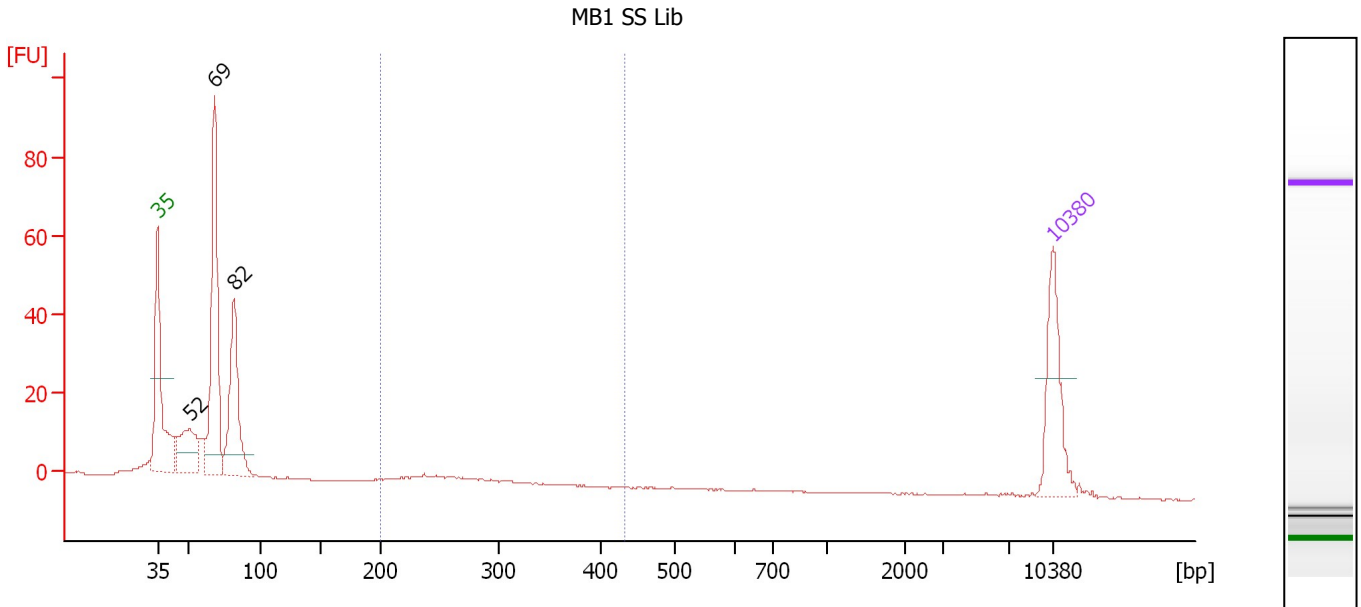
**Region table for sample 3 : HB3 SS Lib**

From [bp]	To [bp]	Average Size [bp]	Molarity [pmol/l]	Conc. [pg/μl]	Corr. Area	% of Total	Size distribution in CV [%]	Color
200	443	248	1.9	0.31	0.2	0	3.5	Blue

Assay Class: High Sensitivity DNA Assay  
 Data Path: C:\...ents and Settings\Bioanalyzer\2014-01-21\2014-01-21\_005.xad

Created: 1/21/2014 5:38:30 PM  
 Modified: 1/22/2014 9:46:33 AM

**Electropherogram Summary Continued ...**



**Overall Results for sample 4 : MB1 SS Lib**

Number of peaks found: 3                      Corr. Area 1: 14.2  
 Noise: 0.2

**Peak table for sample 4 : MB1 SS Lib**

Peak	Aligned Migration Time [s]	Size [bp]	Conc. [pg/μl]	Molarity [pmol/l]	Observations
1	43.00	35	125.00	5,411.3	Lower Marker
2	45.53	52	93.54	2,746.8	
3	47.45	69	275.48	6,085.2	
4	48.96	82	178.02	3,288.1	
5	113.00	10,380	75.00	10.9	Upper Marker

**Region table for sample 4 : MB1 SS Lib**

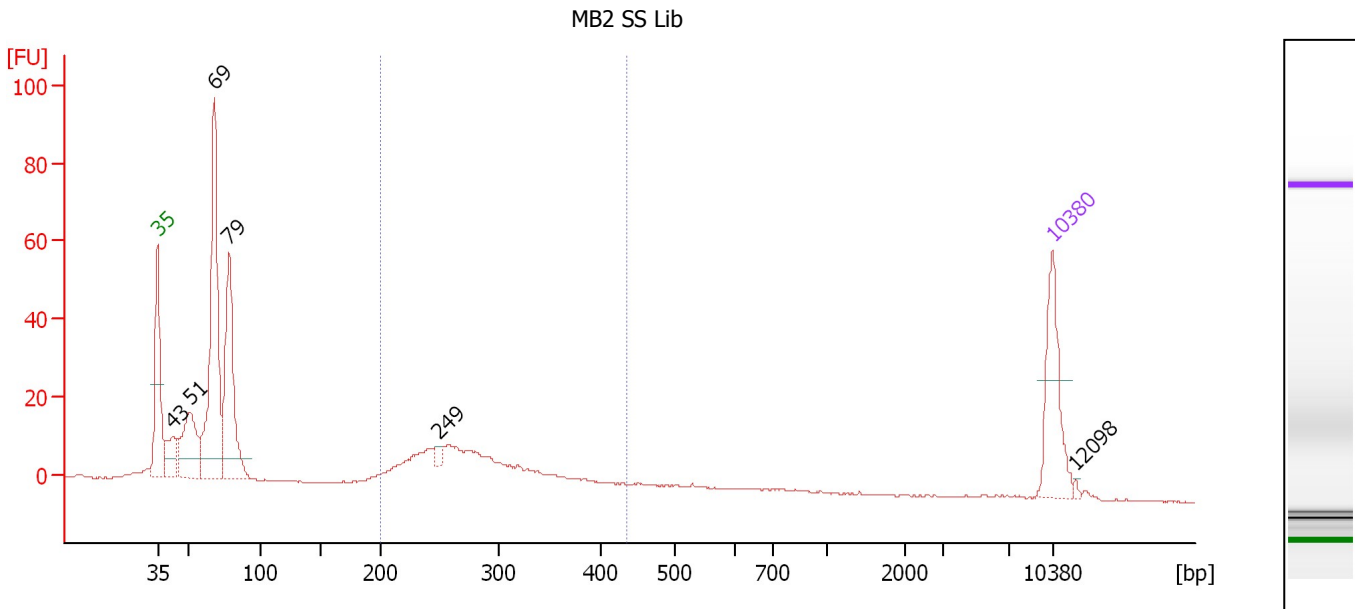
From [bp]	To [bp]	Average Size [bp]	Molarity [pmol/l]	Conc. [pg/μl]	Corr. Area	% of Total	Size distribution in CV [%]	Color
200	432	257	156.8	26.46	14.2	5	11.3	Blue



Assay Class: High Sensitivity DNA Assay  
 Data Path: C:\...ents and Settings\Bioanalyzer\2014-01-21\2014-01-21\_005.xad

Created: 1/21/2014 5:38:30 PM  
 Modified: 1/22/2014 9:46:33 AM

**Electropherogram Summary Continued ...**



**Overall Results for sample 5 : MB2 SS Lib**

Number of peaks found: 6      Corr. Area 1: 153.6  
 Noise: 0.1

**Peak table for sample 5 : MB2 SS Lib**

Peak	Aligned Migration Time [s]	Size [bp]	Conc. [pg/μl]	Molarity [pmol/l]	Observations
1	43.00	35	125.00	5,411.3	Lower Marker
2	44.21	43	52.82	1,873.2	
3	45.51	51	111.55	3,287.2	
4	47.45	69	340.26	7,518.2	
5	48.61	79	224.40	4,306.6	
6	64.96	249	9.40	57.3	
7	113.00	10,380	75.00	10.9	Upper Marker
8	114.75	12,098	0.00	0.0	

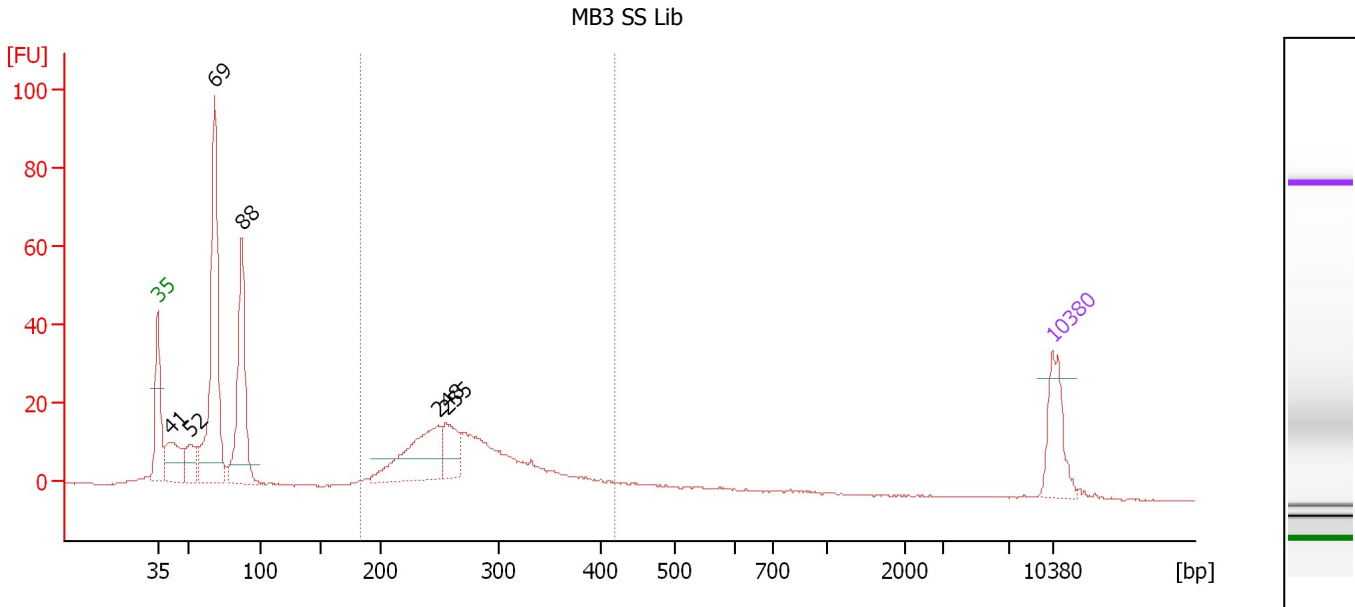
**Region table for sample 5 : MB2 SS Lib**

From [bp]	To [bp]	Average Size [bp]	Molarity [pmol/l]	Conc. [pg/μl]	Corr. Area	% of Total	Size distribution in CV [%]	Color
200	437	283	1,554.5	280.45	153.6	30	18.3	Blue

Assay Class: High Sensitivity DNA Assay  
 Data Path: C:\...ents and Settings\Bioanalyzer\2014-01-21\2014-01-21\_005.xad

Created: 1/21/2014 5:38:30 PM  
 Modified: 1/22/2014 9:46:33 AM

**Electropherogram Summary Continued ...**



**Overall Results for sample 6 : MB3 SS Lib**

Number of peaks found: 6                      Corr. Area 1: 247.2  
 Noise: 0.1

**Peak table for sample 6 : MB3 SS Lib**

Peak	Aligned Migration Time [s]	Size [bp]	Conc. [pg/μl]	Molarity [pmol/l]	Observations
1	43.00	35	125.00	5,411.3	Lower Marker
2	43.99	41	116.83	4,283.4	
3	45.57	52	63.37	1,848.7	
4	47.47	69	499.14	10,995.9	
5	49.59	88	310.87	5,375.1	
6	64.93	248	193.74	1,182.2	
7	65.57	255	80.05	475.3	
8	113.00	10,380	75.00	10.9	Upper Marker

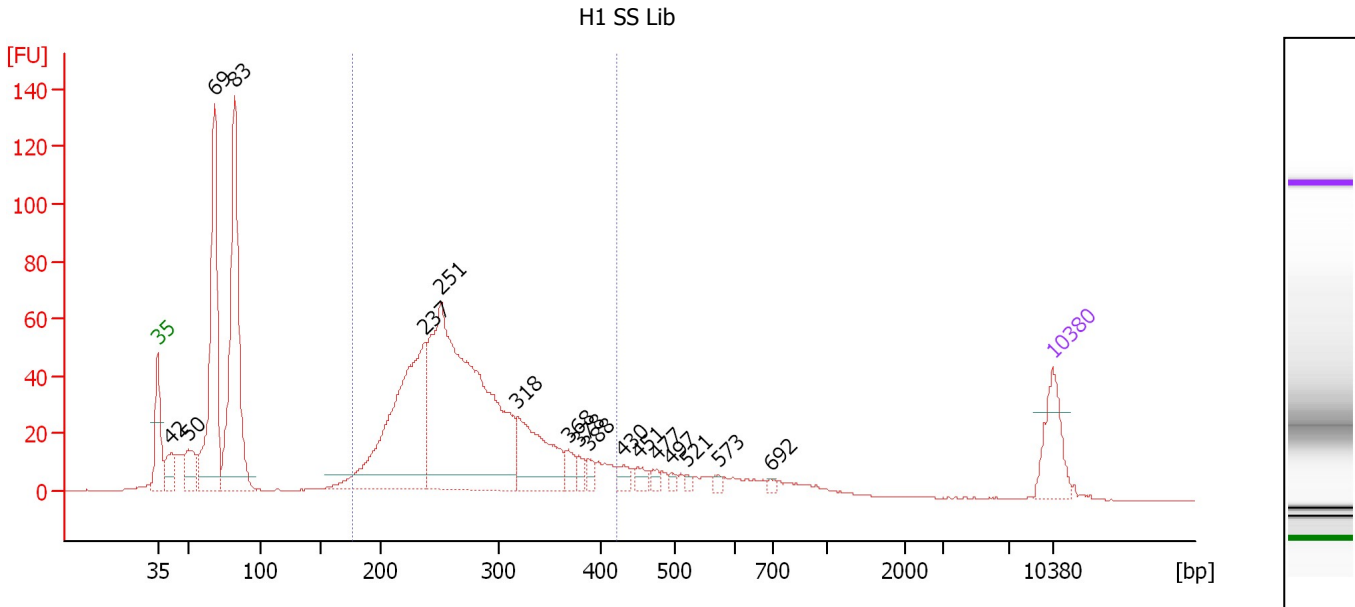
**Region table for sample 6 : MB3 SS Lib**

From [bp]	To [bp]	Average Size [bp]	Molarity [pmol/l]	Conc. [pg/μl]	Corr. Area	% of Total	Size distribution in CV [%]	Color
182	419	277	3,814.0	672.82	247.2	41	18.2	Blue

Assay Class: High Sensitivity DNA Assay  
 Data Path: C:\...ents and Settings\Bioanalyzer\2014-01-21\2014-01-21\_005.xad

Created: 1/21/2014 5:38:30 PM  
 Modified: 1/22/2014 9:46:33 AM

**Electropherogram Summary Continued ...**



**Overall Results for sample 7 : H1 SS Lib**

Number of peaks found: 17      Corr. Area 1: 924.9  
 Noise: 0.1

**Peak table for sample 7 : H1 SS Lib**

Peak	Aligned Migration Time [s]	Size [bp]	Conc. [pg/μl]	Molarity [pmol/l]	Observations
1	43.00	35	125.00	5,411.3	Lower Marker
2	44.02	42	68.74	2,508.0	
3	45.41	50	79.94	2,400.6	
4	47.46	69	499.31	11,017.2	
5	49.02	83	568.87	10,444.1	
6	63.90	237	535.64	3,423.8	
7	65.19	251	960.62	5,796.9	
8	71.12	318	195.68	932.8	
9	75.08	368	29.30	120.8	
10	75.93	378	17.34	69.5	
11	76.69	388	18.06	70.6	
12	79.40	430	22.88	80.5	
13	80.56	451	19.04	64.0	
14	82.08	477	12.72	40.4	
15	83.19	497	8.10	24.7	
16	84.39	521	6.64	19.3	
17	86.89	573	8.72	23.0	
18	90.94	692	6.38	14.0	
19	113.00	10,380	75.00	10.9	Upper Marker

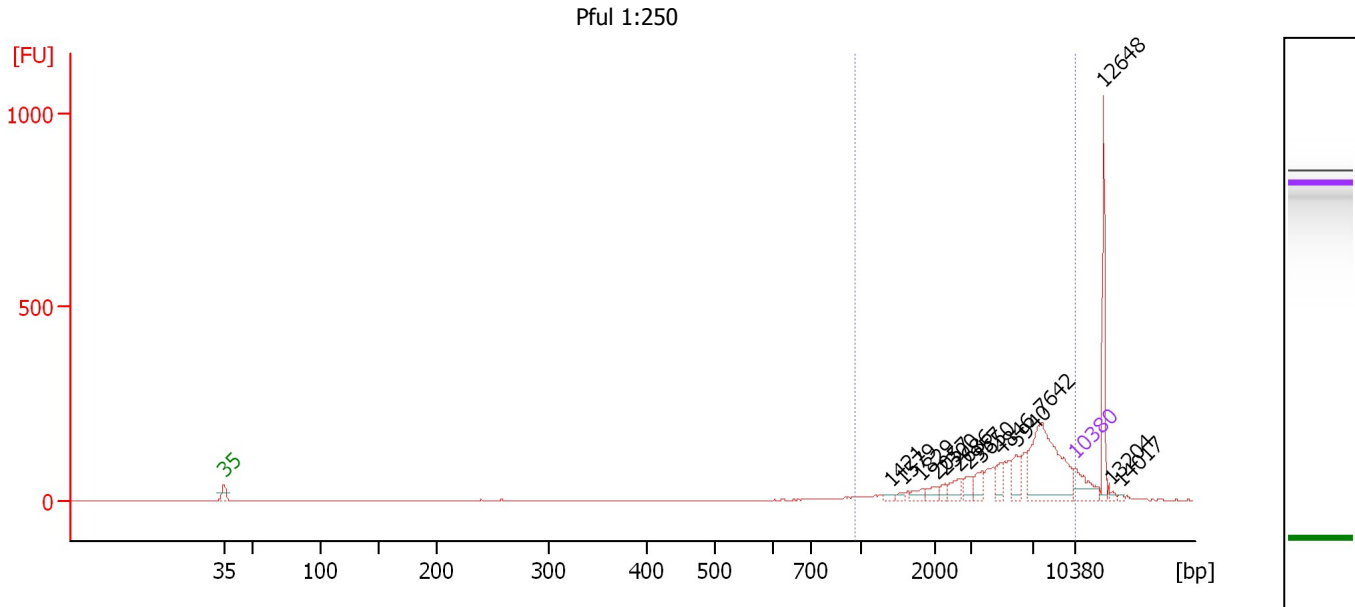
**Region table for sample 7 : H1 SS Lib**

From [bp]	To [bp]	Average Size [bp]	Molarity [pmol/l]	Conc. [pg/μl]	Corr. Area	% of Total	Size distribution in CV [%]	Color
177	423	275	10,737.0	1,866.52	924.9	57	19.6	Blue

Assay Class: High Sensitivity DNA Assay  
 Data Path: C:\...ents and Settings\Bioanalyzer\2014-01-21\2014-01-21\_005.xad

Created: 1/21/2014 5:38:30 PM  
 Modified: 1/22/2014 9:46:33 AM

**Electropherogram Summary Continued ...**



**Setpoint Deviations for sample 8 : Pful 1:250**

Height Threshold [FU] : 15

**Overall Results for sample 8 : Pful 1:250**

Number of peaks found: 14      Corr. Area 1: 1,145.1  
 Noise: 0.6

**Peak table for sample 8 : Pful 1:250**

Peak	Aligned Migration Time [s]	Size [bp]	Conc. [pg/μl]	Molarity [pmol/l]	Observations
1	43.00	35	125.00	5,411.3	Lower Marker
2	97.87	1,421	10.54	11.2	
3	98.83	1,579	11.33	10.9	
4	100.35	1,829	21.52	17.8	
5	101.57	2,057	26.11	19.2	
6	102.31	2,300	19.50	12.8	
7	103.49	2,686	40.85	23.0	
8	104.32	2,957	36.33	18.6	
9	105.28	3,650	41.92	17.4	
10	106.81	4,846	41.22	12.9	
11	108.20	5,940	59.76	15.2	
12	110.21	7,642	350.14	69.4	
13	113.00	10,380	75.00	10.9	Upper Marker
14	115.31	12,648	0.00	0.0	
15	115.88	13,204	0.00	0.0	
16	116.71	14,017	0.00	0.0	

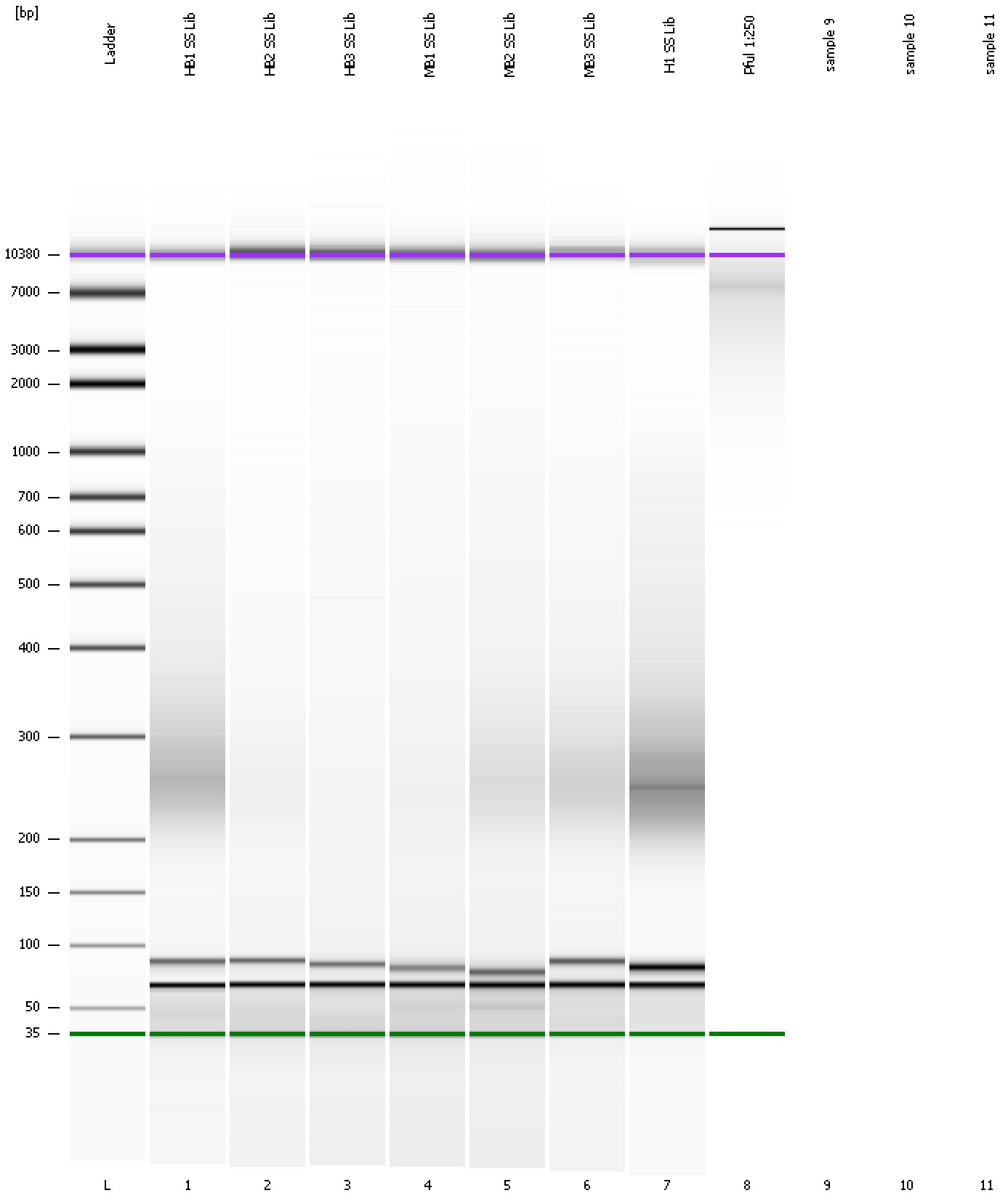
**Region table for sample 8 : Pful 1:250**

From [bp]	To [bp]	Average Size [bp]	Molarity [pmol/l]	Conc. [pg/μl]	Corr. Area	% of Total	Size distribution in CV [%]	Color
975	10,393	5,804	294.0	820.57	1,145.1	78	44.0	Blue

Assay Class: High Sensitivity DNA Assay  
Data Path: C:\...ents and Settings\Bioanalyzer\2014-01-21\2014-01-21\_005.xad

Created: 1/21/2014 5:38:30 PM  
Modified: 1/22/2014 9:46:33 AM

**Gel Image**



Assay Class: High Sensitivity DNA Assay  
Data Path: C:\...ents and Settings\Bioanalyzer\2014-01-21\2014-01-21\_005.xad

Created: 1/21/2014 5:38:30 PM  
Modified: 1/22/2014 9:46:33 AM

**Invalid Samples**

Sample 9 has not been run, no results available.

Sample 10 has not been run, no results available.

Sample 11 has not been run, no results available.