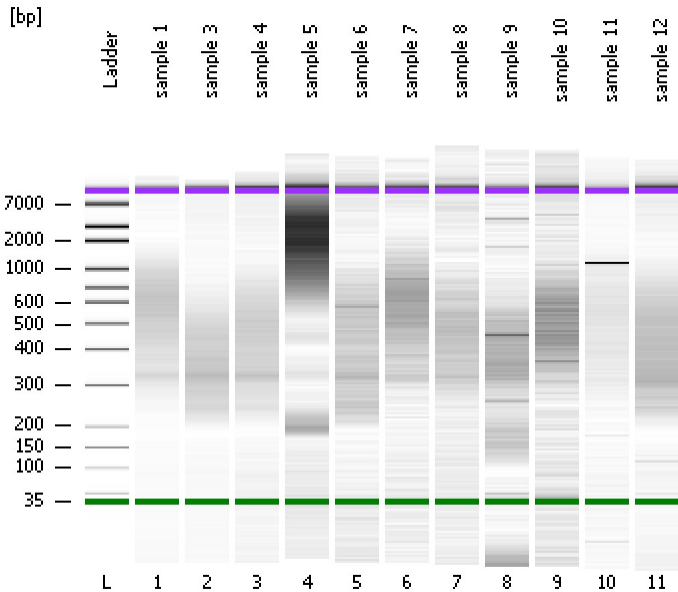


Assay Class: High Sensitivity DNA Assay
Data Path: C:\...ents and Settings\Bioanalyzer\2014-01-22\2014-01-22_006.xad

Created: 1/22/2014 4:31:55 PM
Modified: 1/22/2014 5:15:07 PM

Electrophoresis File Run Summary



Instrument Information:

Instrument Name: DE13701086 Firmware: C.01.069
Serial#: DE13701086 Type: G2938B

Assay Information:

Assay Origin Path: C:\Program Files\Agilent\2100 bioanalyzer\2100 expert\assays\dsDNA\High Sensitivity DNA.xsy
Assay Class: High Sensitivity DNA Assay
Version: 1.03
Assay Comments: Copyright © 2003-2010 Agilent Technologies

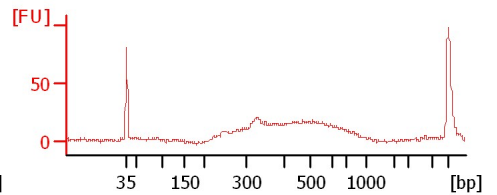
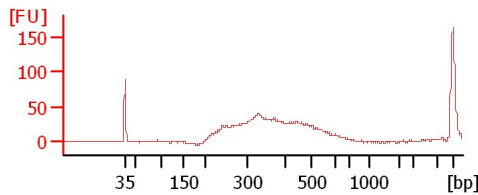
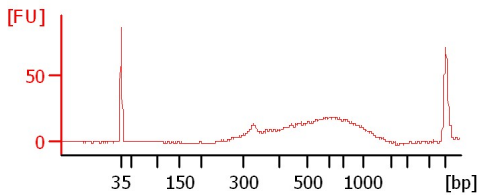
Chip Information:

Chip Lot #:
Reagent Kit Lot #:
Chip Comments:

sample 1

sample 3

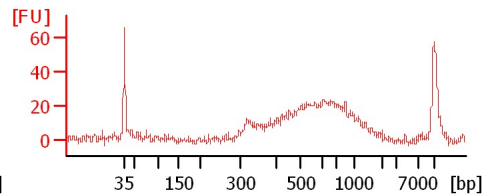
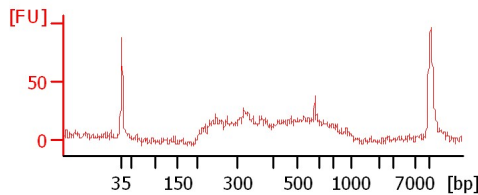
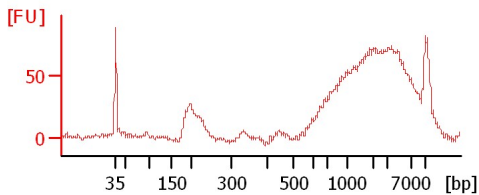
sample 4



sample 5

sample 6

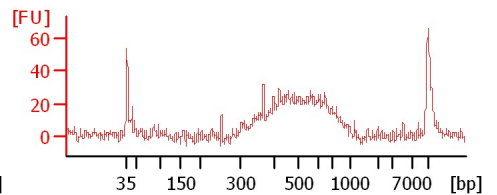
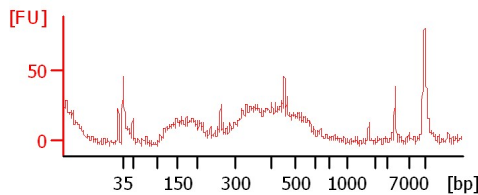
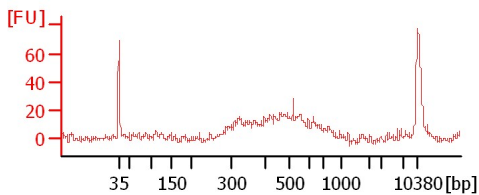
sample 7



sample 8

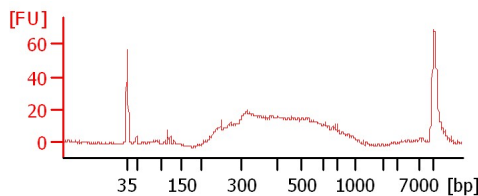
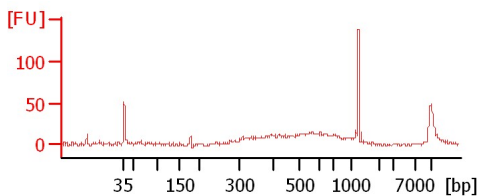
sample 9

sample 10



sample 11

sample 12



Assay Class: High Sensitivity DNA Assay
 Data Path: C:\...ents and Settings\Bioanalyzer\2014-01-22\2014-01-22_006.xad

Created: 1/22/2014 4:31:55 PM
 Modified: 1/22/2014 5:15:07 PM

Electrophoresis File Run Summary (Chip Summary)

Sample Name	Sample Comment	Rest. Digest	Status	Observation	Result Label	Result Color
sample 1		<input type="checkbox"/>	✓			
sample 3		<input type="checkbox"/>	✓			
sample 4		<input type="checkbox"/>	✓			
sample 5		<input type="checkbox"/>	✓			
sample 6		<input type="checkbox"/>	✓			
sample 7		<input type="checkbox"/>	✓			
sample 8		<input type="checkbox"/>	✓			
sample 9		<input type="checkbox"/>	✓			
sample 10		<input type="checkbox"/>	✓			
sample 11		<input type="checkbox"/>	✓			
sample 12		<input type="checkbox"/>	✓			
Ladder		<input type="checkbox"/>	✓			

Chip Lot #

Reagent Kit Lot #

Chip Comments :

Assay Class: High Sensitivity DNA Assay
Data Path: C:\...ents and Settings\Bioanalyzer\2014-01-22\2014-01-22_006.xad

Created: 1/22/2014 4:31:55 PM
Modified: 1/22/2014 5:15:07 PM

Electrophoresis Assay Details

General Analysis Settings

Number of Available Sample and Ladder Wells (Max.) : 12
Minimum Visible Range [s] : 32
Maximum Visible Range [s] : 138
Start Analysis Time Range [s] : 33
End Analysis Time Range [s] : 137.5
Ladder Concentration [pg/μl] : 1950
Uses Standard Area for Ladder Fragments
Lower Marker Concentration [pg/μl] : 125
Upper Marker Concentration [pg/μl] : 75
Used Upper Marker for Quantitation
Standard Curve Fit is Point to Point
Show Data Aligned to Lower and Upper Marker

Integrator Settings

Integration Start Time [s] : 33.05
Integration End Time [s] : 137
Slope Threshold : 0.8
Height Threshold [FU] : 5
Area Threshold : 0.1
Width Threshold [s] : 0.6
Baseline Plateau [s] : 0.5

Filter Settings

Filter Width [s] : 0.5
Polynomial Order : 4

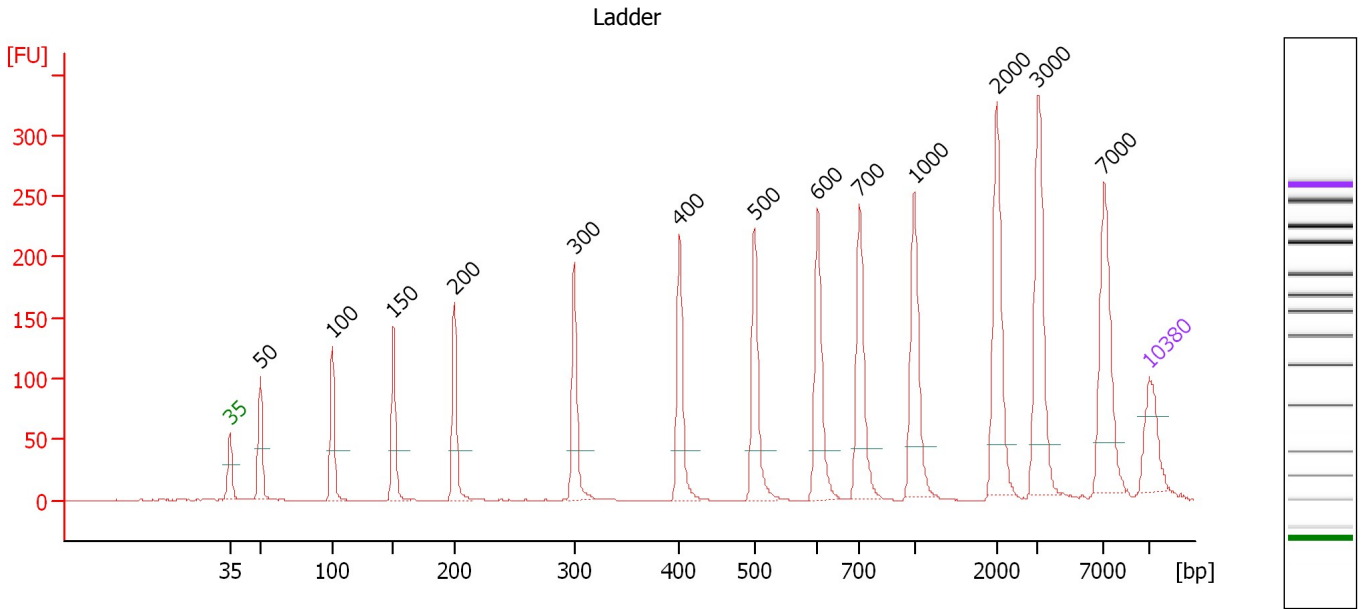
Ladder

Ladder Peak	Size	Area
1	35	160
2	50	210
3	100	208
4	150	221
5	200	242
6	300	270
7	400	305
8	500	306
9	600	336
10	700	321
11	1000	366
12	2000	413
13	3000	411
14	7000	400
15	10380	214

Assay Class: High Sensitivity DNA Assay
 Data Path: C:\...ents and Settings\Bioanalyzer\2014-01-22\2014-01-22_006.xad

Created: 1/22/2014 4:31:55 PM
 Modified: 1/22/2014 5:15:07 PM

Electropherogram Summary



Overall Results for Ladder

Noise: 0.2

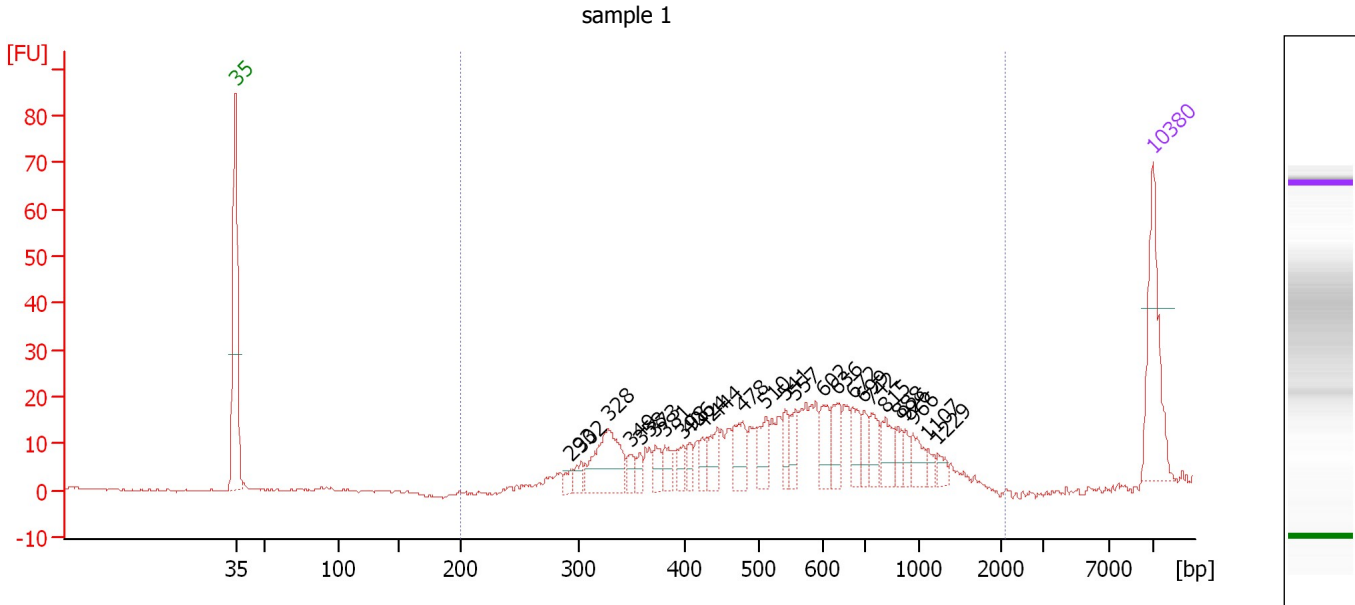
Peak table for Ladder

Peak	Aligned Migration Time [s]	Size [bp]	Conc. [pg/μl]	Molarity [pmol/l]	Observations
1	43.00	35	125.00	5,411.3	Lower Marker
2	45.28	50	150.00	4,545.5	Ladder Peak
3	50.80	100	150.00	2,272.7	Ladder Peak
4	55.43	150	150.00	1,515.2	Ladder Peak
5	60.10	200	150.00	1,136.4	Ladder Peak
6	69.20	300	150.00	757.6	Ladder Peak
7	77.25	400	150.00	568.2	Ladder Peak
8	82.94	500	150.00	454.5	Ladder Peak
9	87.77	600	150.00	378.8	Ladder Peak
10	90.94	700	150.00	324.7	Ladder Peak
11	95.12	1,000	150.00	227.3	Ladder Peak
12	101.42	2,000	150.00	113.6	Ladder Peak
13	104.55	3,000	150.00	75.8	Ladder Peak
14	109.59	7,000	150.00	32.5	Ladder Peak
15	113.00	10,380	75.00	10.9	Upper Marker

Assay Class: High Sensitivity DNA Assay
 Data Path: C:\...ents and Settings\Bioanalyzer\2014-01-22\2014-01-22_006.xad

Created: 1/22/2014 4:31:55 PM
 Modified: 1/22/2014 5:15:07 PM

Electropherogram Summary Continued ...



Overall Results for sample 1 : sample 1

Number of peaks found: 26 Corr. Area 1: 389.7
 Noise: 0.3

Peak table for sample 1 : sample 1


Peak	Aligned Migration Time [s]	Size [bp]	Conc. [pg/μl]	Molarity [pmol/l]	Observations
1	43.00	35	125.00	5,411.3	Lower Marker
2	68.54	293	11.57	59.9	
3	69.40	302	13.10	65.6	
4	71.43	328	89.30	412.9	
5	73.18	349	13.86	60.1	
6	73.87	358	11.72	49.6	
7	75.05	373	17.55	71.3	
8	75.74	381	19.41	77.1	
9	77.13	398	14.59	55.5	
10	77.61	406	12.56	46.8	
11	78.63	424	14.97	53.5	
12	79.77	444	26.18	89.3	
13	81.68	478	35.58	112.8	
14	83.43	510	30.21	89.7	
15	84.93	541	17.91	50.1	
16	85.71	557	18.79	51.1	
17	87.82	602	27.07	68.2	
18	88.92	636	28.91	68.8	
19	90.06	672	23.41	52.8	
20	90.91	699	17.47	37.9	
21	91.52	742	21.93	44.8	
22	92.54	815	25.52	47.5	
23	93.56	888	11.23	19.2	
24	94.09	926	11.84	19.4	
25	94.66	966	19.62	30.8	

Assay Class: High Sensitivity DNA Assay
 Data Path: C:\...ents and Settings\Bioanalyzer\2014-01-22\2014-01-22_006.xad


Created: 1/22/2014 4:31:55 PM
 Modified: 1/22/2014 5:15:07 PM

Electropherogram Summary Continued ...

... Peak table for sample 1 : sample 1

Peak	Aligned Migration Time [s]	Size [bp]	Conc. [pg/ μ l]	Molarity [pmol/l]	Observations
26	95.79	1,107	7.13	9.8	
27	96.57	1,229	8.34	10.3	
28	 113.00	10,380	75.00	10.9	Upper Marker

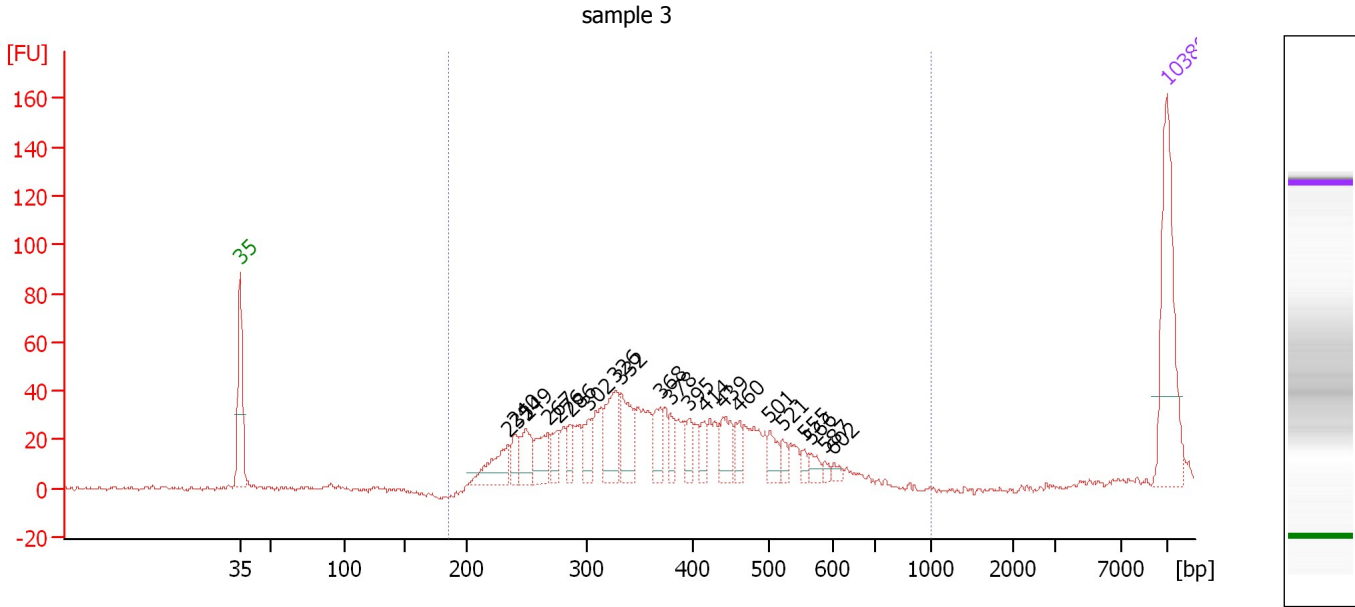
Region table for sample 1 : sample 1

From [bp]	To [bp]	Average Size [bp]	Molarity [pmol/l]	Conc. [pg/ μ l]	Corr. Area	% of Total	Size distribution in CV [%]	Color
200	2,092	588	2,058.6	671.23	389.7	100	38.5	

Assay Class: High Sensitivity DNA Assay
 Data Path: C:\...ents and Settings\Bioanalyzer\2014-01-22\2014-01-22_006.xad

Created: 1/22/2014 4:31:55 PM
 Modified: 1/22/2014 5:15:07 PM

Electropherogram Summary Continued ...



Overall Results for sample 2 : sample 3

Number of peaks found: 21 Corr. Area 1: 742.4
 Noise: 0.9

Peak table for sample 2 : sample 3

Peak	Aligned Migration Time [s]	Size [bp]	Conc. [pg/μl]	Molarity [pmol/l]	Observations
1	43.00	35	125.00	5,411.3	Lower Marker
2	63.26	235	36.25	234.1	
3	63.74	240	15.44	97.5	
4	64.59	249	30.40	184.8	
5	66.24	267	28.32	160.5	
6	67.00	276	17.86	98.1	
7	67.97	286	15.10	79.9	
8	69.34	302	22.37	112.3	
9	71.31	326	47.58	221.0	
10	71.76	332	37.28	170.3	
11	74.70	368	21.39	88.0	
12	75.46	378	13.70	54.9	
13	76.87	395	12.36	47.4	
14	78.04	414	12.55	46.0	
15	79.45	439	24.33	84.0	
16	80.66	460	12.72	41.9	
17	82.99	501	14.76	44.6	
18	83.96	521	8.55	24.9	
19	85.57	555	5.36	14.6	
20	86.14	566	7.94	21.3	
21	87.14	587	3.74	9.7	
22	87.83	602	4.30	10.8	
23	113.00	10,380	75.00	10.9	Upper Marker

Assay Class: High Sensitivity DNA Assay
Data Path: C:\...ents and Settings\Bioanalyzer\2014-01-22\2014-01-22_006.xad

Created: 1/22/2014 4:31:55 PM
Modified: 1/22/2014 5:15:07 PM

Electropherogram Summary Continued ...

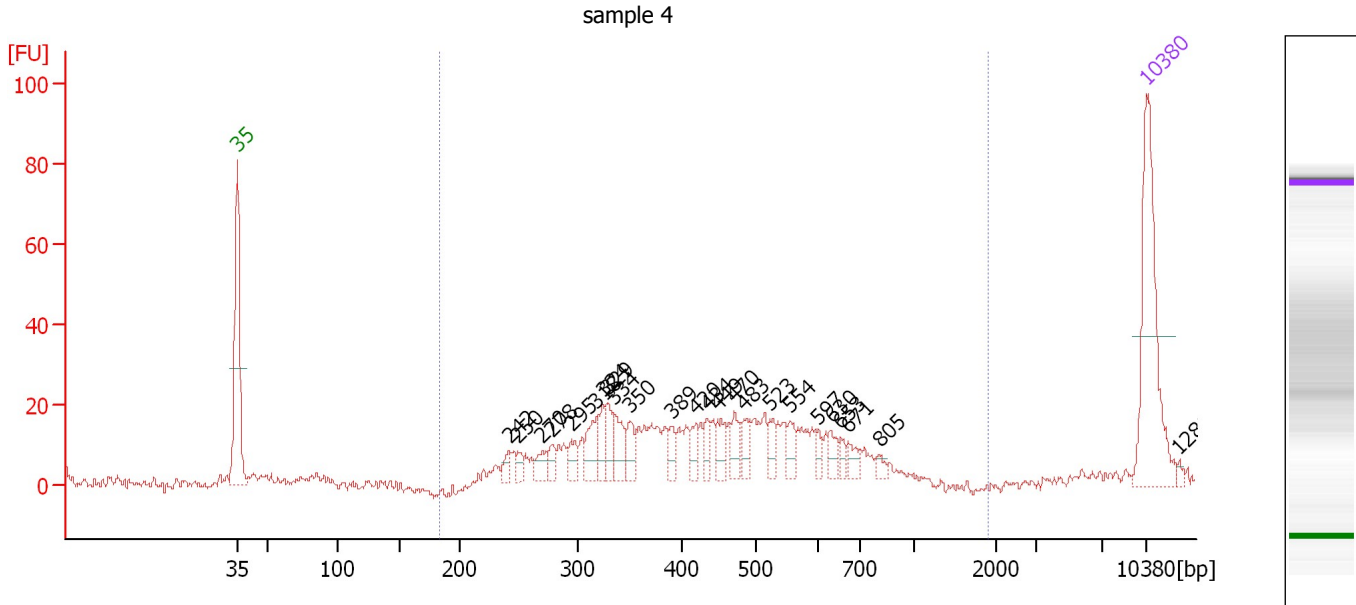
... Region table for sample 2 : sample 3

From [bp]	To [bp]	Average Size [bp]	Molarity [pmol/l]	Conc. [pg/μl]	Corr. Area	% of Total	Size distribution in CV [%]	Color
185	1,000	365	2,436.5	539.02	742.4	99	24.4	■

Assay Class: High Sensitivity DNA Assay
 Data Path: C:\...ents and Settings\Bioanalyzer\2014-01-22\2014-01-22_006.xad

Created: 1/22/2014 4:31:55 PM
 Modified: 1/22/2014 5:15:07 PM

Electropherogram Summary Continued ...



Overall Results for sample 3 : sample 4

Number of peaks found: 24 Corr. Area 1: 453.9
 Noise: 1.3

Peak table for sample 3 : sample 4

Peak	Aligned Migration Time [s]	Size [bp]	Conc. [pg/μl]	Molarity [pmol/l]	Observations
1	43.00	35	125.00	5,411.3	Lower Marker
2	63.93	242	8.21	51.4	
3	64.62	250	7.54	45.8	
4	66.51	270	12.66	70.9	
5	67.21	278	8.28	45.1	
6	68.73	295	12.01	61.8	
7	70.66	318	22.79	108.6	
8	71.15	324	14.55	68.0	
9	71.52	329	15.97	73.6	
10	71.97	334	22.05	99.9	
11	73.24	350	14.54	62.9	
12	76.40	389	9.61	37.4	
13	78.37	420	11.09	40.0	
14	79.19	434	9.74	34.0	
15	80.01	449	13.09	44.2	
16	81.24	470	13.51	43.5	
17	81.98	483	12.43	39.0	
18	84.03	523	9.52	27.6	
19	85.55	554	10.37	28.3	
20	87.64	597	6.18	15.7	
21	88.71	630	8.49	20.4	
22	89.45	653	5.57	12.9	
23	90.02	671	8.13	18.4	
24	92.40	805	4.31	8.1	
25	113.00	10,380	75.00	10.9	Upper Marker


Assay Class: High Sensitivity DNA Assay
Data Path: C:\...ents and Settings\Bioanalyzer\2014-01-22\2014-01-22_006.xad

Created: 1/22/2014 4:31:55 PM
Modified: 1/22/2014 5:15:07 PM

Electropherogram Summary Continued ...**... Peak table for sample 3 : sample 4**

Peak	Aligned Migration Time [s]	Size [bp]	Conc. [pg/ μ l]	Molarity [pmol/l]	Observations
26	115.46	12,818	0.00	0.0	

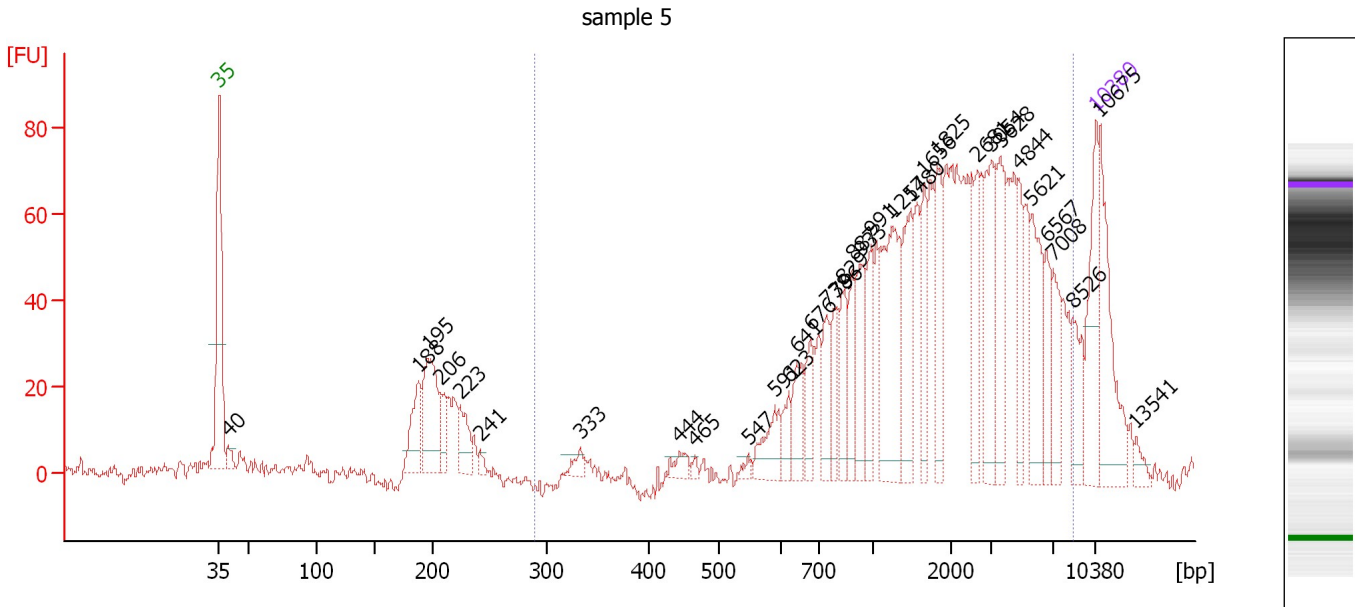
Region table for sample 3 : sample 4

From [bp]	To [bp]	Average Size [bp]	Molarity [pmol/l]	Conc. [pg/ μ l]	Corr. Area	% of Total	Size distribution in CV [%]	Color
183	1,911	440	1,749.2	444.97	453.9	92	30.6	

Assay Class: High Sensitivity DNA Assay
 Data Path: C:\...ents and Settings\Bioanalyzer\2014-01-22\2014-01-22_006.xad

Created: 1/22/2014 4:31:55 PM
 Modified: 1/22/2014 5:15:07 PM

Electropherogram Summary Continued ...



Overall Results for sample 4 : sample 5

Number of peaks found: 34 Corr. Area 1: 1,321.5
 Noise: 2.0

Peak table for sample 4 : sample 5

Peak	Aligned Migration Time [s]	Size [bp]	Conc. [pg/μl]	Molarity [pmol/l]	Observations
1	43.00	35	125.00	5,411.3	Lower Marker
2	43.72	40	17.19	655.0	
3	58.96	188	70.48	568.9	
4	59.68	195	129.01	1,000.0	
5	60.66	206	37.12	272.9	
6	62.23	223	46.18	313.2	
7	63.81	241	8.80	55.4	
8	71.85	333	14.40	65.5	
9	79.77	444	16.66	56.8	
10	80.96	465	5.06	16.5	
11	85.21	547	6.62	18.3	
12	87.34	591	45.25	116.0	
13	88.49	623	24.07	58.6	
14	89.09	641	43.35	102.4	
15	90.19	676	36.67	82.1	
16	91.47	738	46.57	95.6	
17	92.28	796	39.77	75.7	
18	92.74	829	45.37	82.9	
19	93.55	887	44.34	75.7	
20	94.19	933	63.23	102.7	
21	95.00	991	51.04	78.0	
22	96.74	1,257	142.25	171.4	
23	98.15	1,480	81.70	83.6	
24	99.26	1,656	49.36	45.2	
25	100.32	1,825	63.41	52.6	

Assay Class: High Sensitivity DNA Assay
 Data Path: C:\...ents and Settings\Bioanalyzer\2014-01-22\2014-01-22_006.xad

Created: 1/22/2014 4:31:55 PM
 Modified: 1/22/2014 5:15:07 PM

Electropherogram Summary Continued ...

... Peak table for sample 4 : sample 5

Peak	Aligned Migration Time [s]	Size [bp]	Conc. [pg/μl]	Molarity [pmol/l]	Observations
26	103.55	2,681	56.44	31.9	
27	104.62	3,054	84.12	41.7	
28	105.34	3,628	73.32	30.6	
29	106.87	4,844	46.27	14.5	
30	107.85	5,621	74.84	20.2	
31	109.04	6,567	40.15	9.3	
32	109.60	7,008	43.28	9.4	
33	111.13	8,526	38.26	6.8	
34	113.00	10,380	75.00	10.9	Upper Marker
35	113.30	10,675	0.00	0.0	
36	116.19	13,541	0.00	0.0	

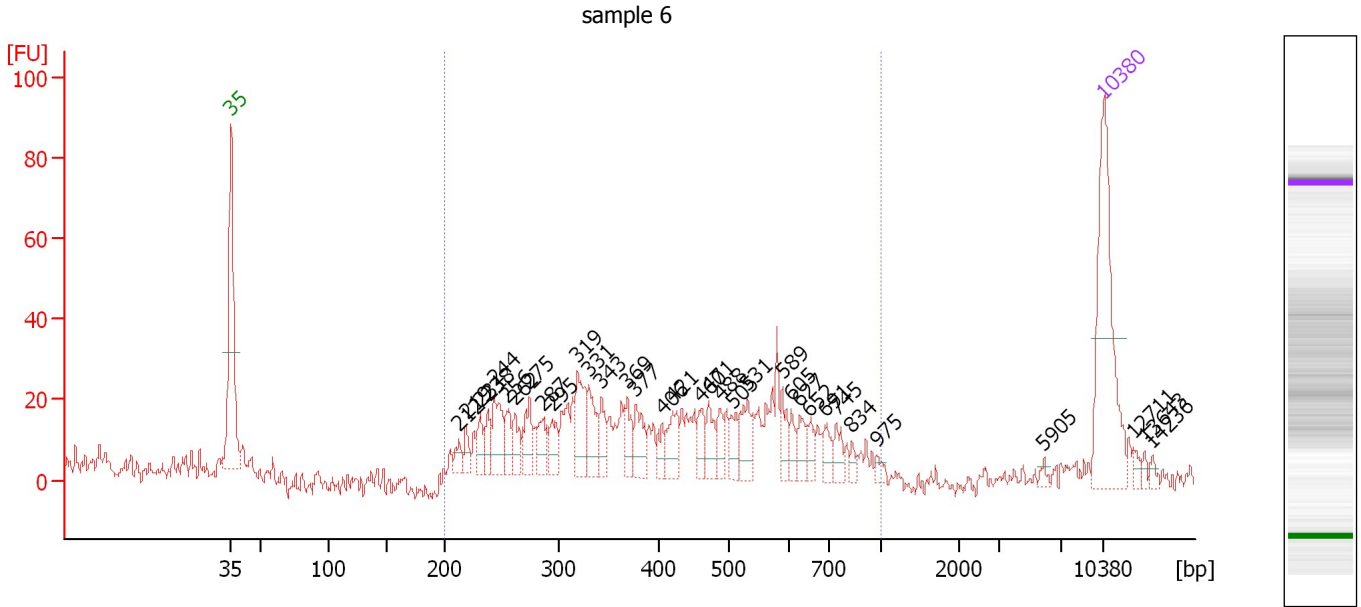
Region table for sample 4 : sample 5

From [bp]	To [bp]	Average Size [bp]	Molarity [pmol/l]	Conc. [pg/μl]	Corr. Area	% of Total	Size distribution in CV [%]	Color
289	8,625	2,657	1,932.5	1,775.87	1,321.5	79	76.2	

Assay Class: High Sensitivity DNA Assay
 Data Path: C:\...ents and Settings\Bioanalyzer\2014-01-22\2014-01-22_006.xad

Created: 1/22/2014 4:31:55 PM
 Modified: 1/22/2014 5:15:07 PM

Electropherogram Summary Continued ...



Overall Results for sample 5 : sample 6

Number of peaks found: 34 Corr. Area 1: 524.5
 Noise: 3.0

Peak table for sample 5 : sample 6


Peak	Aligned Migration Time [s]	Size [bp]	Conc. [pg/μl]	Molarity [pmol/l]	Observations
1	43.00	35	125.00	5,411.3	Lower Marker
2	61.23	212	8.88	63.4	
3	61.83	219	10.22	70.7	
4	62.94	231	13.24	86.8	
5	63.58	238	13.20	84.0	
6	64.09	244	29.96	186.2	
7	65.16	256	14.95	88.6	
8	65.76	262	14.36	83.0	
9	66.92	275	21.39	117.9	
10	67.99	287	18.03	95.3	
11	68.72	295	15.86	81.6	
12	70.77	319	32.12	152.4	
13	71.67	331	25.92	118.8	
14	72.69	343	15.06	66.5	
15	74.75	369	14.88	61.1	
16	75.43	377	20.26	81.3	
17	77.57	406	9.28	34.6	
18	78.43	421	18.89	68.0	
19	80.65	460	11.95	39.4	
20	81.29	471	14.43	46.4	
21	82.24	488	10.92	33.9	
22	83.18	505	11.80	35.4	
23	84.42	531	20.46	58.4	
24	87.24	589	12.60	32.4	
25	87.93	605	7.98	20.0	

Assay Class: High Sensitivity DNA Assay
 Data Path: C:\...ents and Settings\Bioanalyzer\2014-01-22\2014-01-22_006.xad

Created: 1/22/2014 4:31:55 PM
 Modified: 1/22/2014 5:15:07 PM

Electropherogram Summary Continued ...

... Peak table for sample 5 : sample 6

Peak	Aligned Migration Time [s]	Size [bp]	Conc. [pg/ μ l]	Molarity [pmol/l]	Observations
26	88.61	627	11.39	27.6	
27	89.42	652	7.40	17.2	
28	90.67	691	10.50	23.0	
29	91.56	745	9.73	19.8	
30	92.80	834	4.01	7.3	
31	94.77	975	3.99	6.2	
32	108.21	5,905	2.58	0.7	
33	 113.00	10,380	75.00	10.9	Upper Marker
34	115.35	12,711	0.00	0.0	
35	116.29	13,643	0.00	0.0	
36	116.89	14,236	0.00	0.0	

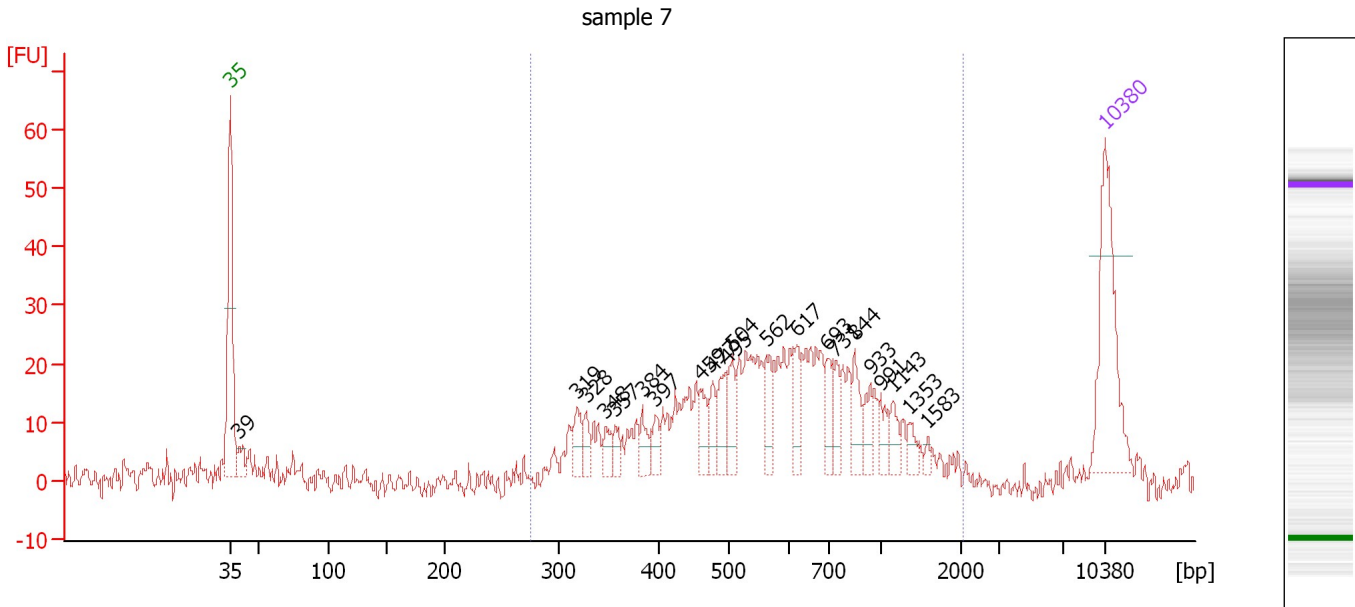
Region table for sample 5 : sample 6

From [bp]	To [bp]	Average Size [bp]	Molarity [pmol/l]	Conc. [pg/ μ l]	Corr. Area	% of Total	Size distribution in CV [%]	Color
200	1,000	439	2,067.2	498.90	524.5	95	36.0	

Assay Class: High Sensitivity DNA Assay
 Data Path: C:\...ents and Settings\Bioanalyzer\2014-01-22\2014-01-22_006.xad

Created: 1/22/2014 4:31:55 PM
 Modified: 1/22/2014 5:15:07 PM

Electropherogram Summary Continued ...



Overall Results for sample 6 : sample 7

Number of peaks found: 21 Corr. Area 1: 438.1
 Noise: 2.3

Peak table for sample 6 : sample 7

Peak	Aligned Migration Time [s]	Size [bp]	Conc. [pg/μl]	Molarity [pmol/l]	Observations
1	43.00	35	125.00	5,411.3	Lower Marker
2	43.68	39	17.25	661.8	
3	70.73	319	20.82	98.9	
4	71.49	328	12.76	58.9	
5	73.03	348	12.49	54.4	
6	73.80	357	11.54	48.9	
7	75.97	384	14.90	58.8	
8	77.04	397	12.65	48.2	
9	80.58	459	18.38	60.7	
10	81.60	477	15.85	50.4	
11	82.67	495	24.29	74.3	
12	83.14	504	23.80	71.5	
13	85.91	562	20.56	55.5	
14	88.30	617	22.54	55.4	
15	90.73	693	19.23	42.0	
16	91.37	731	15.91	33.0	
17	92.95	844	21.95	39.4	
18	94.19	933	14.85	24.1	
19	95.00	991	12.25	18.7	
20	96.02	1,143	11.61	15.4	
21	97.34	1,353	9.00	10.1	
22	98.80	1,583	3.39	3.2	
23	113.00	10,380	75.00	10.9	Upper Marker

Assay Class: High Sensitivity DNA Assay
Data Path: C:\...ents and Settings\Bioanalyzer\2014-01-22\2014-01-22_006.xad

Created: 1/22/2014 4:31:55 PM
Modified: 1/22/2014 5:15:07 PM

Electropherogram Summary Continued ...

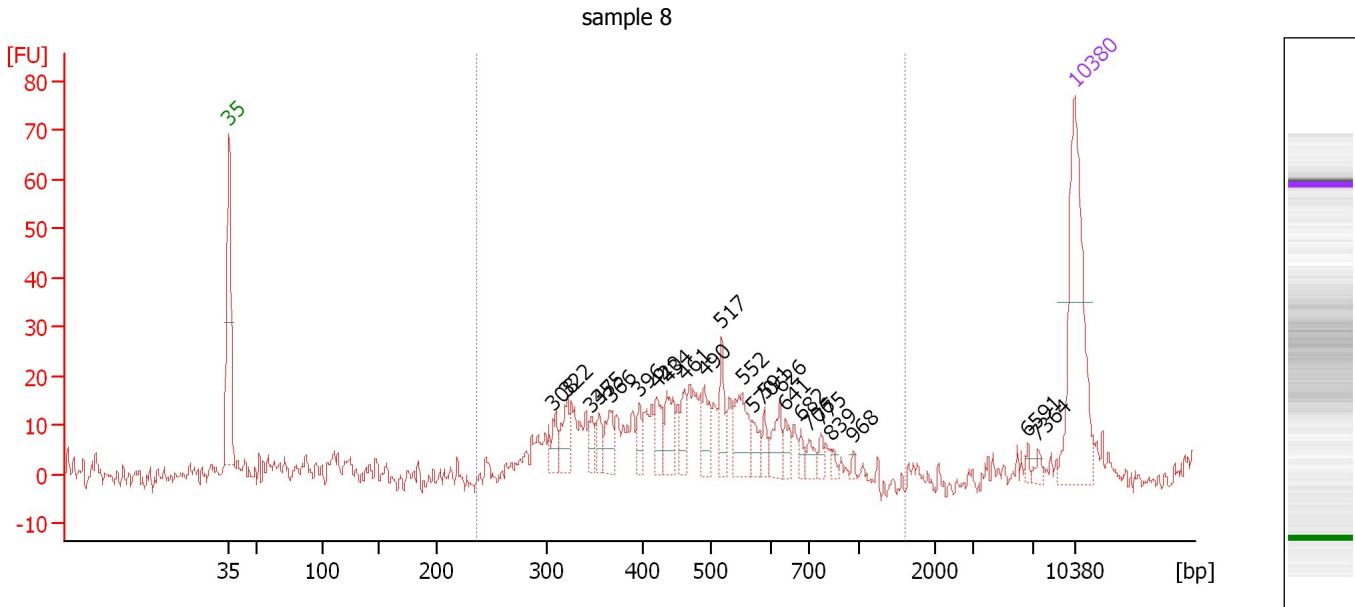
... Region table for sample 6 : sample 7

From [bp]	To [bp]	Average Size [bp]	Molarity [pmol/l]	Conc. [pg/μl]	Corr. Area	% of Total	Size distribution in CV [%]	Color
276	2,089	625	1,767.5	611.87	438.1	92	41.1	■

Assay Class: High Sensitivity DNA Assay
 Data Path: C:\...ents and Settings\Bioanalyzer\2014-01-22\2014-01-22_006.xad

Created: 1/22/2014 4:31:55 PM
 Modified: 1/22/2014 5:15:07 PM

Electropherogram Summary Continued ...



Overall Results for sample 7 : sample 8

Number of peaks found: 23 Corr. Area 1: 257.1
 Noise: 1.8

Peak table for sample 7 : sample 8

Peak	Aligned Migration Time [s]	Size [bp]	Conc. [pg/μl]	Molarity [pmol/l]	Observations
1	43.00	35	125.00	5,411.3	Lower Marker
2	69.83	308	14.16	69.7	
3	70.94	322	20.22	95.3	
4	72.97	347	9.99	43.7	
5	73.63	355	10.38	44.3	
6	74.51	366	16.12	66.7	
7	76.94	396	10.40	39.8	
8	78.40	420	16.20	58.4	
9	79.19	434	20.27	70.7	
10	80.69	461	12.82	42.2	
11	82.37	490	18.98	58.7	
12	83.78	517	16.45	48.2	
13	85.46	552	27.42	75.2	
14	86.30	570	9.80	26.1	
15	87.31	591	7.48	19.2	
16	88.59	626	15.06	36.5	
17	89.08	641	8.38	19.8	
18	90.36	682	5.16	11.5	
19	91.02	706	7.19	15.4	
20	91.99	775	4.60	9.0	
21	92.87	839	2.87	5.2	
22	94.68	968	1.99	3.1	
23	109.07	6,591	2.56	0.6	
24	109.95	7,364	3.26	0.7	
25	113.00	10,380	75.00	10.9	Upper Marker

Assay Class: High Sensitivity DNA Assay
Data Path: C:\...ents and Settings\Bioanalyzer\2014-01-22\2014-01-22_006.xad

Created: 1/22/2014 4:31:55 PM
Modified: 1/22/2014 5:15:07 PM

Electropherogram Summary Continued ...

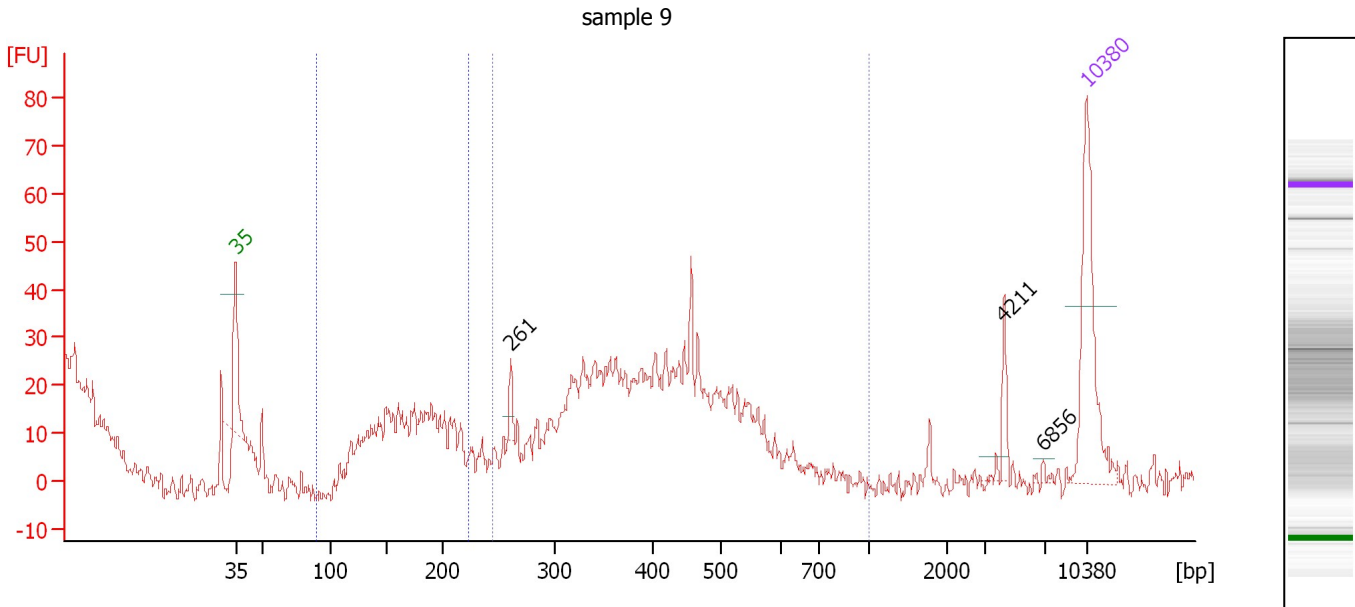
... Region table for sample 7 : sample 8

From [bp]	To [bp]	Average Size [bp]	Molarity [pmol/l]	Conc. [pg/μl]	Corr. Area	% of Total	Size distribution in CV [%]	Color
236	1,613	466	1,013.6	288.24	257.1	98	24.1	■

Assay Class: High Sensitivity DNA Assay
 Data Path: C:\...ents and Settings\Bioanalyzer\2014-01-22\2014-01-22_006.xad

Created: 1/22/2014 4:31:55 PM
 Modified: 1/22/2014 5:15:07 PM

Electropherogram Summary Continued ...



Overall Results for sample 8 : sample 9

Number of peaks found: 3 Corr. Area 1: 150.3
 Noise: 3.1 Corr. Area 2: 0.0

Peak table for sample 8 : sample 9

Peak	Aligned Migration Time [s]	Size [bp]	Conc. [pg/μl]	Molarity [pmol/l]	Observations
1	43.00	35	125.00	5,411.3	Lower Marker
2	65.62	261	11.14	64.8	
3	106.07	4,211	15.45	5.6	
4	109.41	6,856	2.31	0.5	
5	113.00	10,380	75.00	10.9	Upper Marker

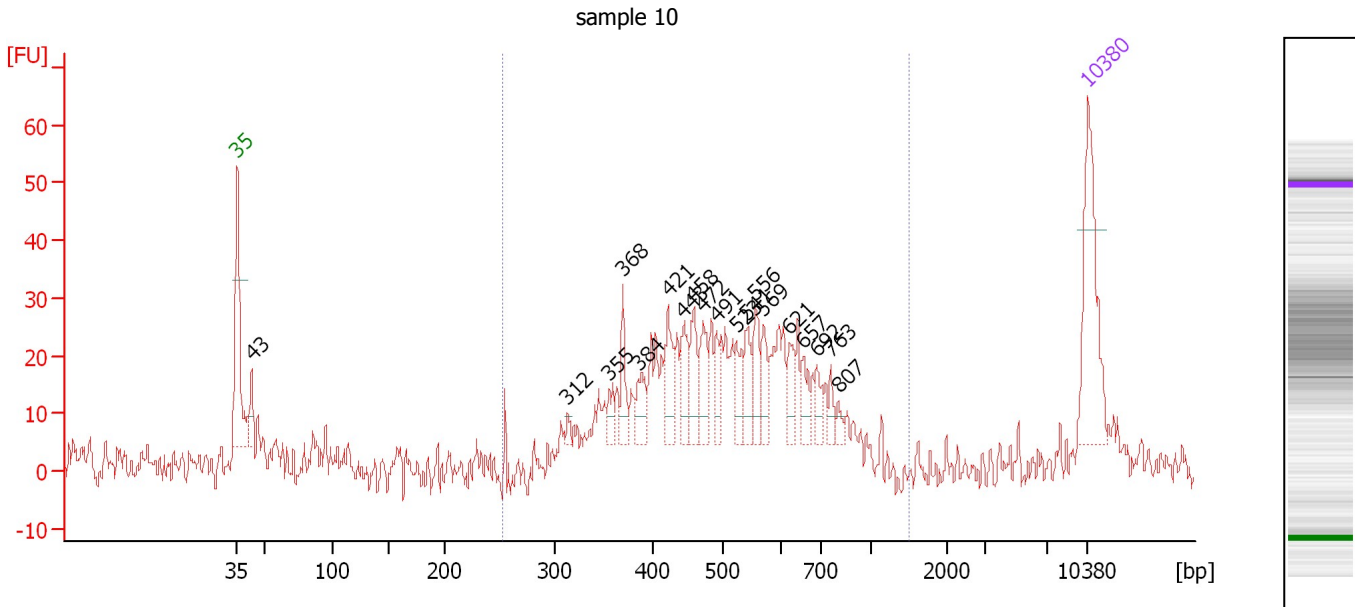
Region table for sample 8 : sample 9

From [bp]	To [bp]	Average Size [bp]	Molarity [pmol/l]	Conc. [pg/μl]	Corr. Area	% of Total	Size distribution in CV [%]	Color
90	223	0	0.0	0.00	0.0	0	0.0	Blue
245	1,000	418	734.2	196.27	150.3	92	15.1	Dark Blue

Assay Class: High Sensitivity DNA Assay
 Data Path: C:\...ents and Settings\Bioanalyzer\2014-01-22\2014-01-22_006.xad

Created: 1/22/2014 4:31:55 PM
 Modified: 1/22/2014 5:15:07 PM

Electropherogram Summary Continued ...



Overall Results for sample 9 : sample 10

Number of peaks found: 19 Corr. Area 1: 505.1
 Noise: 3.7

Peak table for sample 9 : sample 10

Peak	Aligned Migration Time [s]	Size [bp]	Conc. [pg/μl]	Molarity [pmol/l]	Observations
1	43.00	35	125.00	5,411.3	Lower Marker
2	44.18	43	24.96	883.5	
3	70.19	312	5.95	28.8	
4	73.61	355	14.28	61.0	
5	74.71	368	25.12	103.3	
6	75.98	384	25.74	101.5	
7	78.44	421	35.10	126.3	
8	79.71	443	27.65	94.5	
9	80.54	458	35.49	117.4	
10	81.33	472	31.11	99.9	
11	82.43	491	21.94	67.7	
12	84.05	523	20.27	58.7	
13	84.93	541	26.26	73.5	
14	85.63	556	28.19	76.9	
15	86.29	569	19.10	50.8	
16	88.44	621	19.76	48.2	
17	89.58	657	17.05	39.3	
18	90.68	692	14.70	32.2	
19	91.82	763	9.09	18.1	
20	92.43	807	6.89	12.9	
21	113.00	10,380	75.00	10.9	Upper Marker

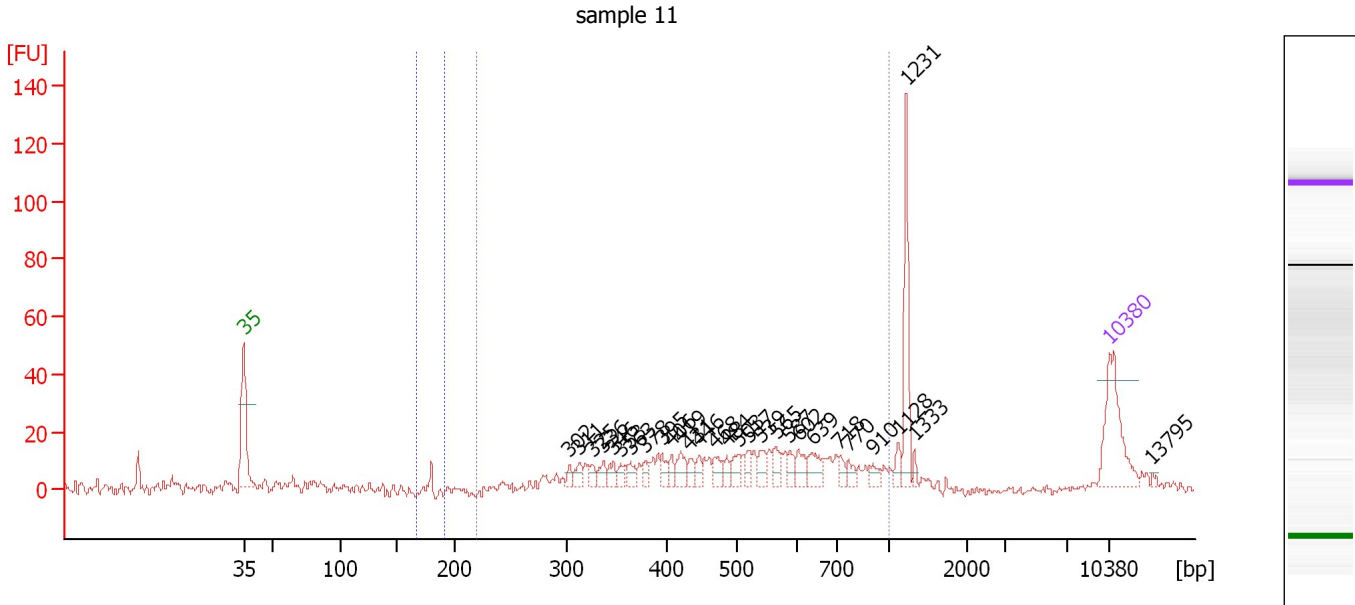
Region table for sample 9 : sample 10

From [bp]	To [bp]	Average Size [bp]	Molarity [pmol/l]	Conc. [pg/μl]	Corr. Area	% of Total	Size distribution in CV [%]	Color
253	1,498	527	2,680.2	844.65	505.1	87	28.7	Blue

Assay Class: High Sensitivity DNA Assay
 Data Path: C:\...ents and Settings\Bioanalyzer\2014-01-22\2014-01-22_006.xad

Created: 1/22/2014 4:31:55 PM
 Modified: 1/22/2014 5:15:07 PM

Electropherogram Summary Continued ...



Overall Results for sample 10 : sample 11

Number of peaks found: 29 Corr. Area 1: 299.9
 Noise: 1.3 Corr. Area 2: 3.0

Peak table for sample 10 : sample 11

Peak	Aligned Migration Time [s]	Size [bp]	Conc. [pg/μl]	Molarity [pmol/l]	Observations
1	43.00	35	125.00	5,411.3	Lower Marker
2	69.34	302	9.68	48.6	
3	70.11	311	14.59	71.0	
4	71.19	325	11.62	54.2	
5	72.09	336	15.73	70.9	
6	72.87	346	15.13	66.3	
7	73.47	353	10.19	43.7	
8	74.25	363	13.71	57.3	
9	75.46	378	11.47	46.0	
10	76.84	395	13.36	51.3	
11	77.61	406	12.12	45.2	
12	78.34	419	22.21	80.3	
13	79.03	431	13.45	47.2	
14	79.85	446	11.81	40.1	
15	81.10	468	18.95	61.4	
16	82.05	484	11.26	35.2	
17	83.09	503	19.14	57.7	
18	83.78	517	13.84	40.5	
19	84.81	539	17.76	50.0	
20	86.06	565	16.30	43.7	
21	87.14	587	13.81	35.6	
22	87.83	602	18.35	46.2	
23	88.99	639	24.63	58.4	
24	91.19	718	10.35	21.8	
25	91.92	770	11.11	21.8	

Assay Class: High Sensitivity DNA Assay
 Data Path: C:\...ents and Settings\Bioanalyzer\2014-01-22\2014-01-22_006.xad



Created: 1/22/2014 4:31:55 PM
 Modified: 1/22/2014 5:15:07 PM

Electropherogram Summary Continued ...

... Peak table for sample 10 : sample 11

Peak	Aligned Migration Time [s]	Size [bp]	Conc. [pg/μl]	Molarity [pmol/l]	Observations
26	93.86	910	10.93	18.2	
27	95.93	1,128	11.75	15.8	
28	96.58	1,231	79.38	97.7	
29	97.22	1,333	5.61	6.4	
30	113.00	10,380	75.00	10.9	Upper Marker
31	116.45	13,795	0.00	0.0	

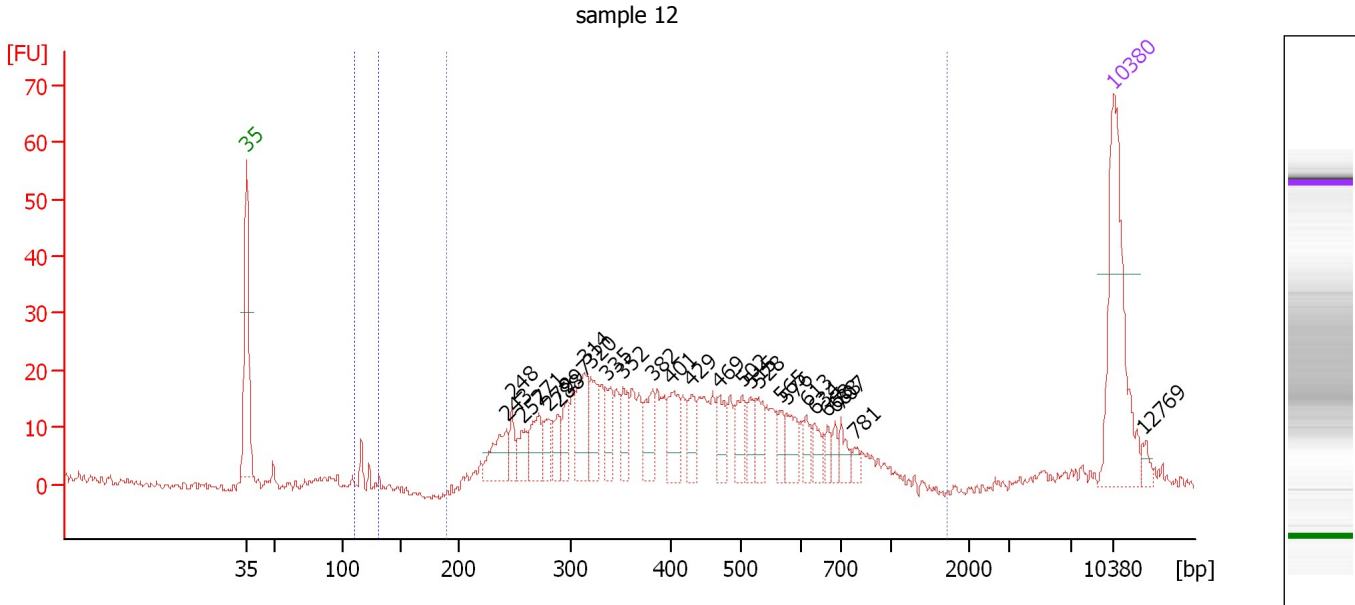
Region table for sample 10 : sample 11

From [bp]	To [bp]	Average Size [bp]	Molarity [pmol/l]	Conc. [pg/μl]	Corr. Area	% of Total	Size distribution in CV [%]	Color
167	191	179	56.9	6.72	3.0	1	0.5	
218	1,000	520	1,711.0	515.36	299.9	73	31.3	

Assay Class: High Sensitivity DNA Assay
 Data Path: C:\...ents and Settings\Bioanalyzer\2014-01-22\2014-01-22_006.xad

Created: 1/22/2014 4:31:55 PM
 Modified: 1/22/2014 5:15:07 PM

Electropherogram Summary Continued ...



Overall Results for sample 11 : sample 12

Number of peaks found: 27 Corr. Area 1: 501.1
 Noise: 0.7 Corr. Area 2: 4.1

Peak table for sample 11 : sample 12

Peak	Aligned Migration Time [s]	Size [bp]	Conc. [pg/μl]	Molarity [pmol/l]	Observations
1	43.00	35	125.00	5,411.3	Lower Marker
2	63.98	243	29.78	186.0	
3	64.45	248	13.03	79.7	
4	65.27	257	16.98	100.2	
5	66.56	271	25.50	142.6	
6	67.34	279	14.31	77.6	
7	68.16	288	13.56	71.2	
8	68.93	297	16.60	84.7	
9	70.31	314	35.15	169.7	
10	70.83	320	25.71	121.7	
11	72.03	335	19.09	86.3	
12	73.41	352	20.08	86.3	
13	75.78	382	22.08	87.6	
14	77.33	401	25.82	97.4	
15	78.93	429	15.76	55.6	
16	81.17	469	18.55	59.9	
17	83.02	502	18.74	56.6	
18	83.66	515	13.47	39.6	
19	84.31	528	16.28	46.7	
20	86.08	565	11.23	30.1	
21	86.59	576	15.53	40.9	
22	88.19	613	8.32	20.6	
23	88.83	634	9.85	23.5	
24	89.91	668	6.96	15.8	
25	90.56	688	6.57	14.5	

Assay Class: High Sensitivity DNA Assay
 Data Path: C:\...ents and Settings\Bioanalyzer\2014-01-22\2014-01-22_006.xad

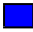

Created: 1/22/2014 4:31:55 PM
 Modified: 1/22/2014 5:15:07 PM

Electropherogram Summary Continued ...

... Peak table for sample 11 : sample 12

Peak	Aligned Migration Time [s]	Size [bp]	Conc. [pg/μl]	Molarity [pmol/l]	Observations
26	91.03	707	9.71	20.8	
27	92.06	781	4.91	9.5	
28	113.00	10,380	75.00	10.9	Upper Marker
29	115.41	12,769	0.00	0.0	

Region table for sample 11 : sample 12

From [bp]	To [bp]	Average Size [bp]	Molarity [pmol/l]	Conc. [pg/μl]	Corr. Area	% of Total	Size distribution in CV [%]	Color
110	131	117	91.1	7.05	4.1	1	2.6	
190	1,715	434	2,557.1	630.52	501.1	96	34.4	

Assay Class: High Sensitivity DNA Assay
Data Path: C:\...ents and Settings\Bioanalyzer\2014-01-22\2014-01-22_006.xad

Created: 1/22/2014 4:31:55 PM
Modified: 1/22/2014 5:15:07 PM

Gel Image

