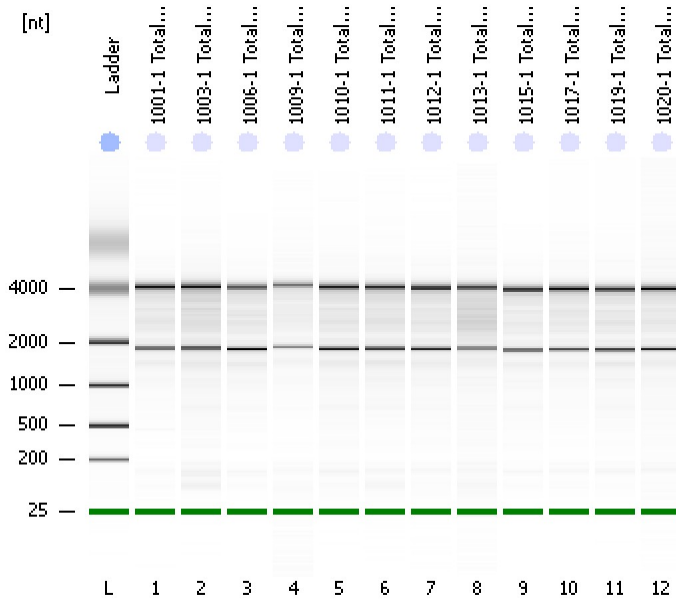


Assay Class: Eukaryote Total RNA Nano
Data Path: C:\...ents and Settings\Bioanalyzer\2014-01-23\2014-01-23_001.xad

Created: 1/23/2014 2:19:24 PM
Modified: 1/23/2014 2:43:14 PM

Electrophoresis File Run Summary



Instrument Information:

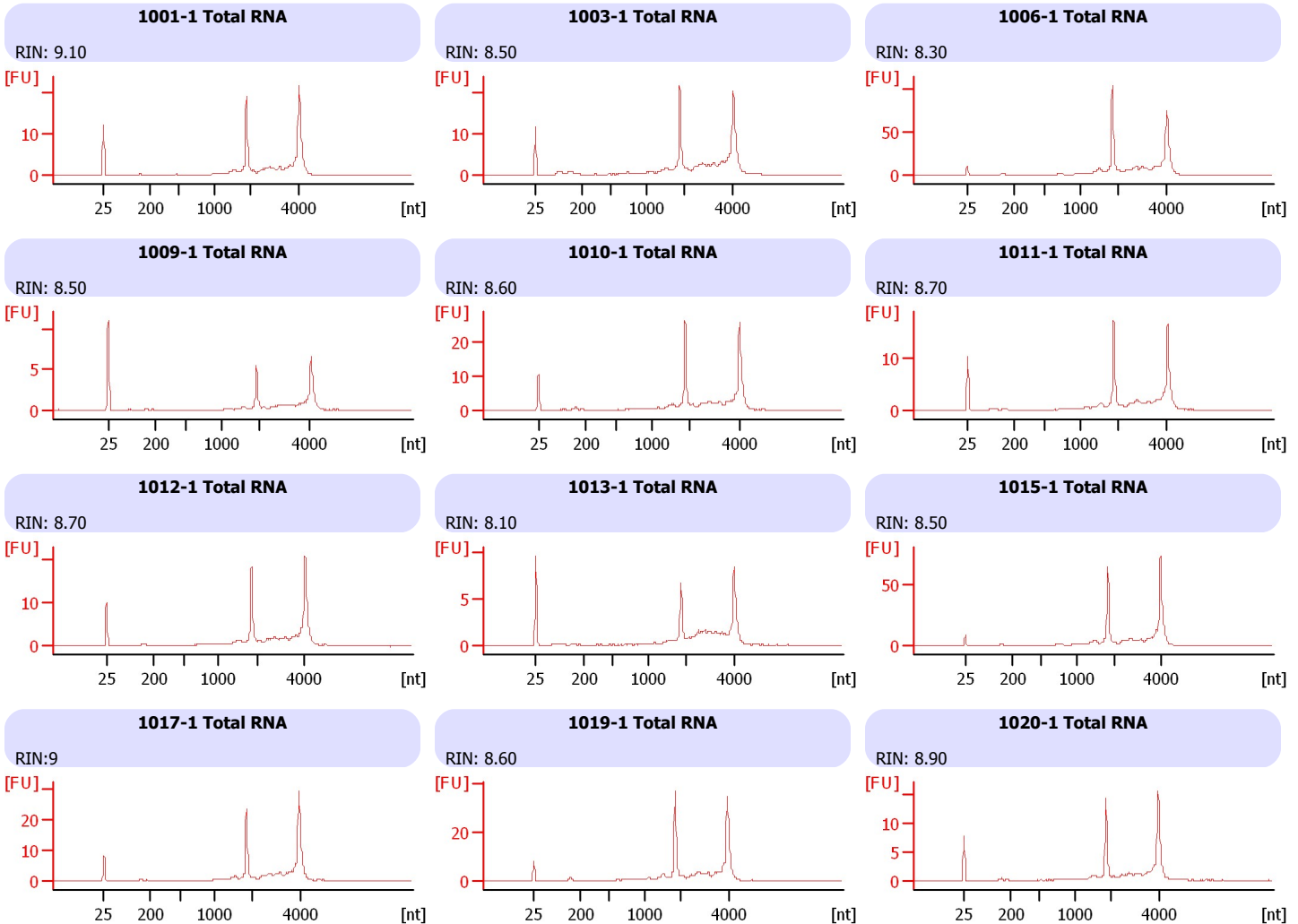
Instrument Name: DE13701086 Firmware: C.01.069
Serial#: DE13701086 Type: G2938B

Assay Information:

Assay Origin Path: C:\Program Files\Agilent\2100 bioanalyzer\2100 expert\assays\RNA\Eukaryote Total RNA Nano Series II.xsy
Assay Class: Eukaryote Total RNA Nano
Version: 2.6
Assay Comments: Total RNA Analysis ng sensitivity (Eukaryote)
© Copyright 2003 - 2009 Agilent Technologies, Inc.

Chip Information:

Chip Lot #:
Reagent Kit Lot #:
Chip Comments:



Assay Class: Eukaryote Total RNA Nano
Data Path: C:\...ents and Settings\Bioanalyzer\2014-01-23\2014-01-23_001.xad

Created: 1/23/2014 2:19:24 PM
Modified: 1/23/2014 2:43:14 PM

Electrophoresis File Run Summary (Chip Summary)

Sample Name	Sample Comment	Status	Result Label	Result Color
1001-1 Total RNA		✓	RIN: 9.10	
1003-1 Total RNA		✓	RIN: 8.50	
1006-1 Total RNA		✓	RIN: 8.30	
1009-1 Total RNA		✓	RIN: 8.50	
1010-1 Total RNA		✓	RIN: 8.60	
1011-1 Total RNA		✓	RIN: 8.70	
1012-1 Total RNA		✓	RIN: 8.70	
1013-1 Total RNA		✓	RIN: 8.10	
1015-1 Total RNA		✓	RIN: 8.50	
1017-1 Total RNA		✓	RIN:9	
1019-1 Total RNA		✓	RIN: 8.60	
1020-1 Total RNA		✓	RIN: 8.90	
Ladder		✓	All Other Samples	

Chip Lot #

Reagent Kit Lot #

Chip Comments :

Assay Class: Eukaryote Total RNA Nano
Data Path: C:\...ents and Settings\Bioanalyzer\2014-01-23\2014-01-23_001.xad

Created: 1/23/2014 2:19:24 PM
Modified: 1/23/2014 2:43:14 PM

Electrophoresis Assay Details

General Analysis Settings

Number of Available Sample and Ladder Wells (Max.) : 13
Minimum Visible Range [s] : 17
Maximum Visible Range [s] : 70
Start Analysis Time Range [s] : 19
End Analysis Time Range [s] : 69
Ladder Concentration [ng/ μ l] : 150
Lower Marker Concentration [ng/ μ l] : 0
Upper Marker Concentration [ng/ μ l] : 0
Used Lower Marker for Quantitation
Standard Curve Fit is Logarithmic
Show Data Aligned to Lower Marker

Integrator Settings

Integration Start Time [s] : 19
Integration End Time [s] : 69
Slope Threshold : 0.6
Height Threshold [FU] : 0.5
Area Threshold : 0.2
Width Threshold [s] : 0.5
Baseline Plateau [s] : 6

Filter Settings

Filter Width [s] : 0.5
Polynomial Order : 4

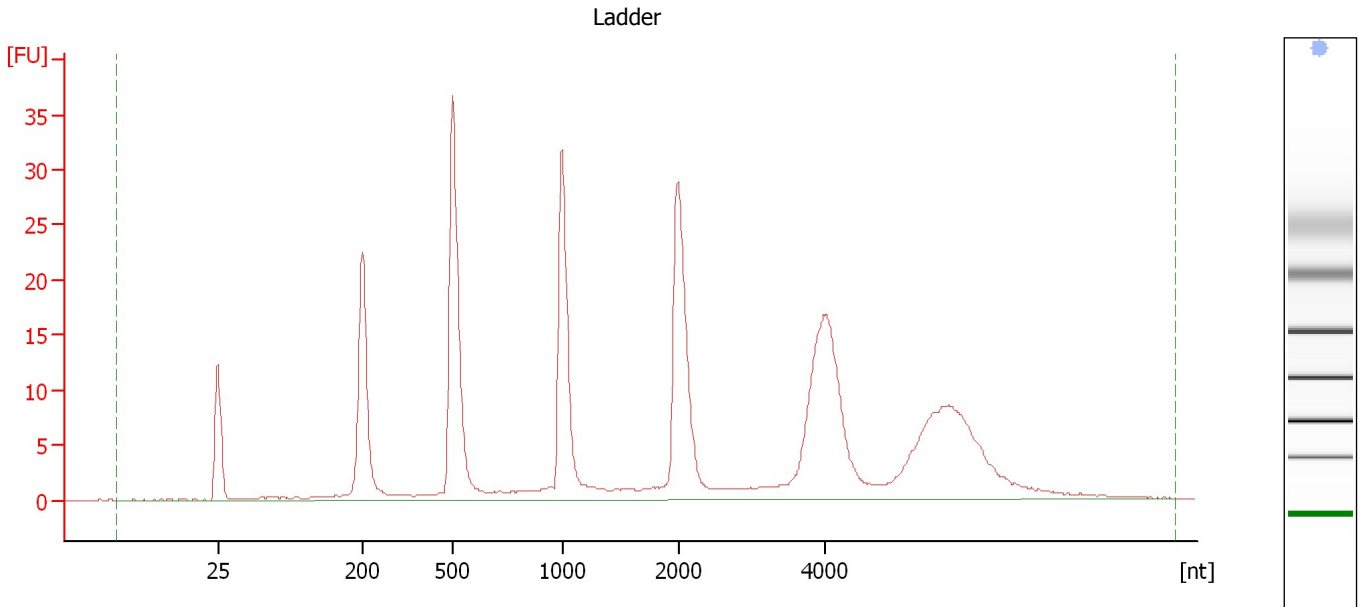
Ladder

Ladder Peak	Size
1	25
2	200
3	500
4	1000
5	2000
6	4000

Assay Class: Eukaryote Total RNA Nano
Data Path: C:\...ents and Settings\Bioanalyzer\2014-01-23\2014-01-23_001.xad

Created: 1/23/2014 2:19:24 PM
Modified: 1/23/2014 2:43:14 PM

Electropherogram Summary



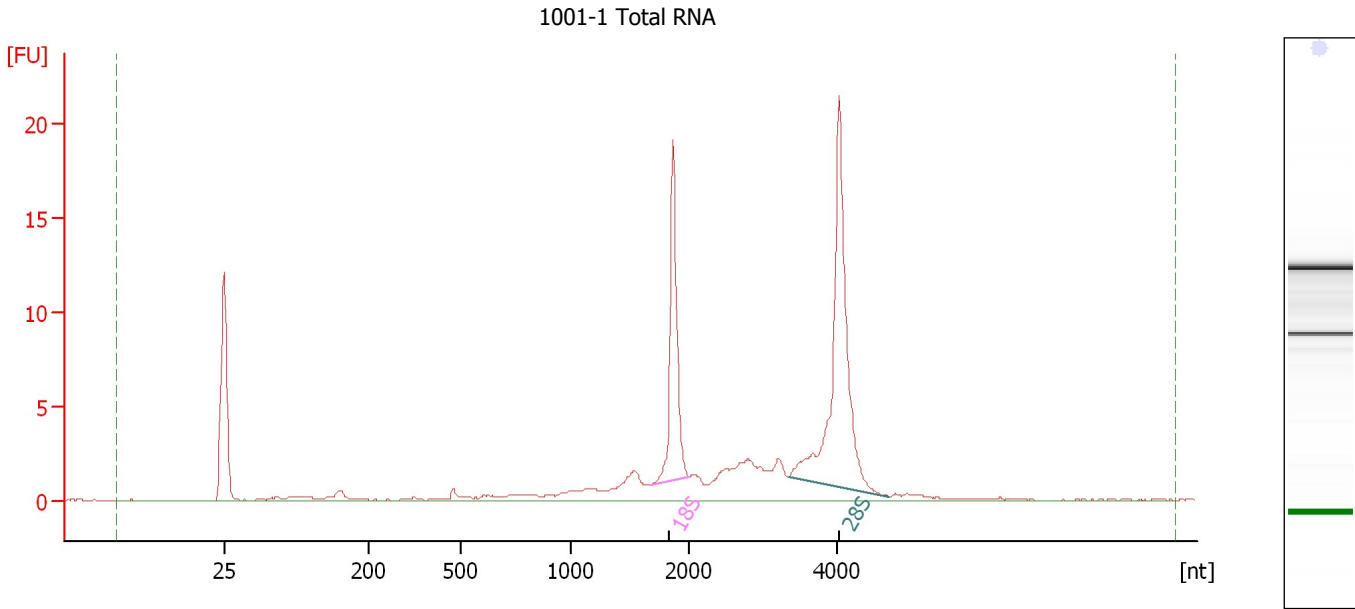
Overall Results for Ladder

RNA Area:	312.3	Result Flagging Color:	
RNA Concentration:	150 ng/μl	Result Flagging Label:	All Other Samples

Assay Class: Eukaryote Total RNA Nano
Data Path: C:\...ents and Settings\Bioanalyzer\2014-01-23\2014-01-23_001.xad

Created: 1/23/2014 2:19:24 PM
Modified: 1/23/2014 2:43:14 PM

Electropherogram Summary Continued ...



Overall Results for sample 1 : 1001-1 Total RNA

RNA Area: 85.4 RNA Integrity Number (RIN): 9.1 (B.02.08)
RNA Concentration: 41 ng/μl Result Flagging Color:
rRNA Ratio [28s / 18s]: 2.0 Result Flagging Label: RIN: 9.10

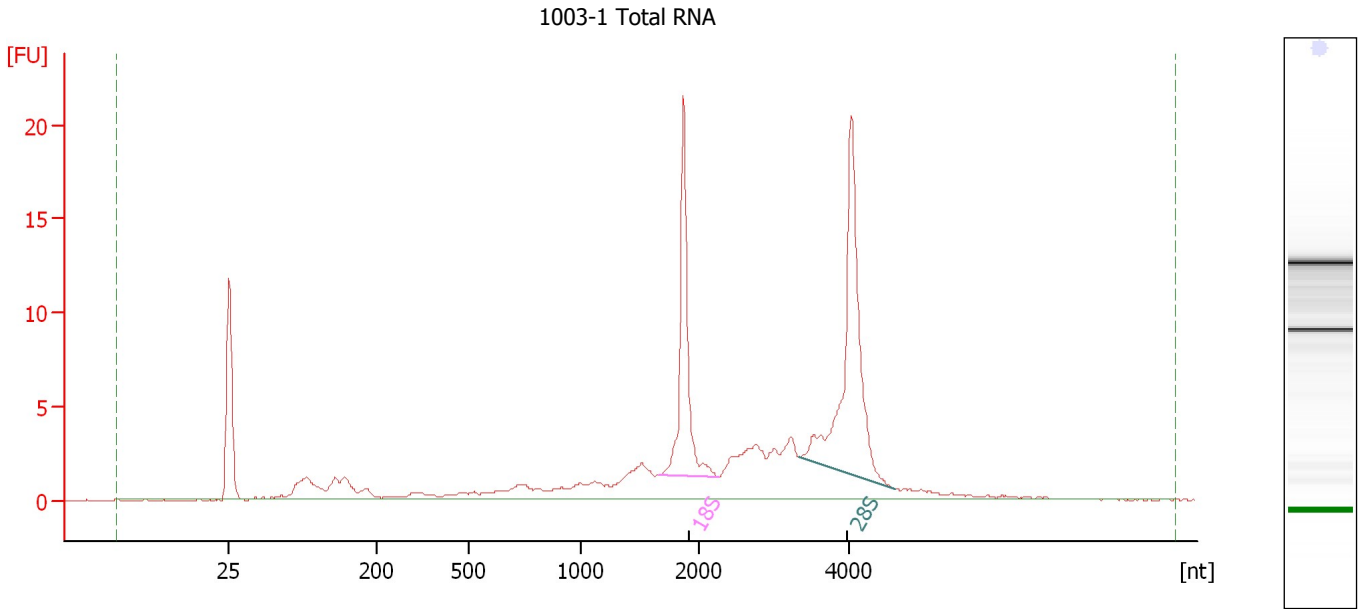
Fragment table for sample 1 : 1001-1 Total RNA

Name	Start Size [nt]	End Size [nt]	Area	% of total Area
18S	1,684	2,022	14.4	16.9
28S	3,342	4,704	28.3	33.2

Assay Class: Eukaryote Total RNA Nano
Data Path: C:\...ents and Settings\Bioanalyzer\2014-01-23\2014-01-23_001.xad

Created: 1/23/2014 2:19:24 PM
Modified: 1/23/2014 2:43:14 PM

Electropherogram Summary Continued ...



Overall Results for sample 2 : 1003-1 Total RNA

RNA Area: 116.4 RNA Integrity Number (RIN): 8.5 (B.02.08)
RNA Concentration: 56 ng/μl Result Flagging Color:
rRNA Ratio [28s / 18s]: 1.5 Result Flagging Label: RIN: 8.50

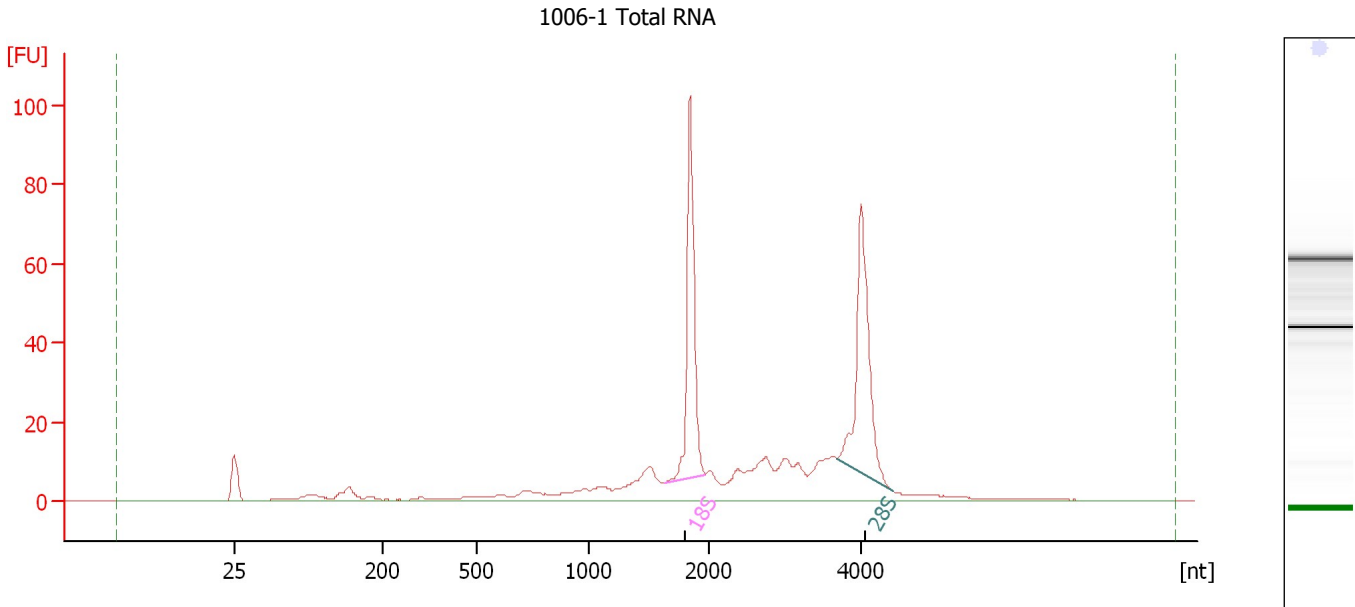
Fragment table for sample 2 : 1003-1 Total RNA

Name	Start Size [nt]	End Size [nt]	Area	% of total Area
18S	1,665	2,285	18.2	15.6
28S	3,350	4,614	27.8	23.9

Assay Class: Eukaryote Total RNA Nano
Data Path: C:\...ents and Settings\Bioanalyzer\2014-01-23\2014-01-23_001.xad

Created: 1/23/2014 2:19:24 PM
Modified: 1/23/2014 2:43:14 PM

Electropherogram Summary Continued ...



Overall Results for sample 3 : 1006-1 Total RNA

RNA Area: 408.2 RNA Integrity Number (RIN): 8.3 (B.02.08)
RNA Concentration: 196 ng/μl Result Flagging Color:
rRNA Ratio [28s / 18s]: 1.1 Result Flagging Label: RIN: 8.30

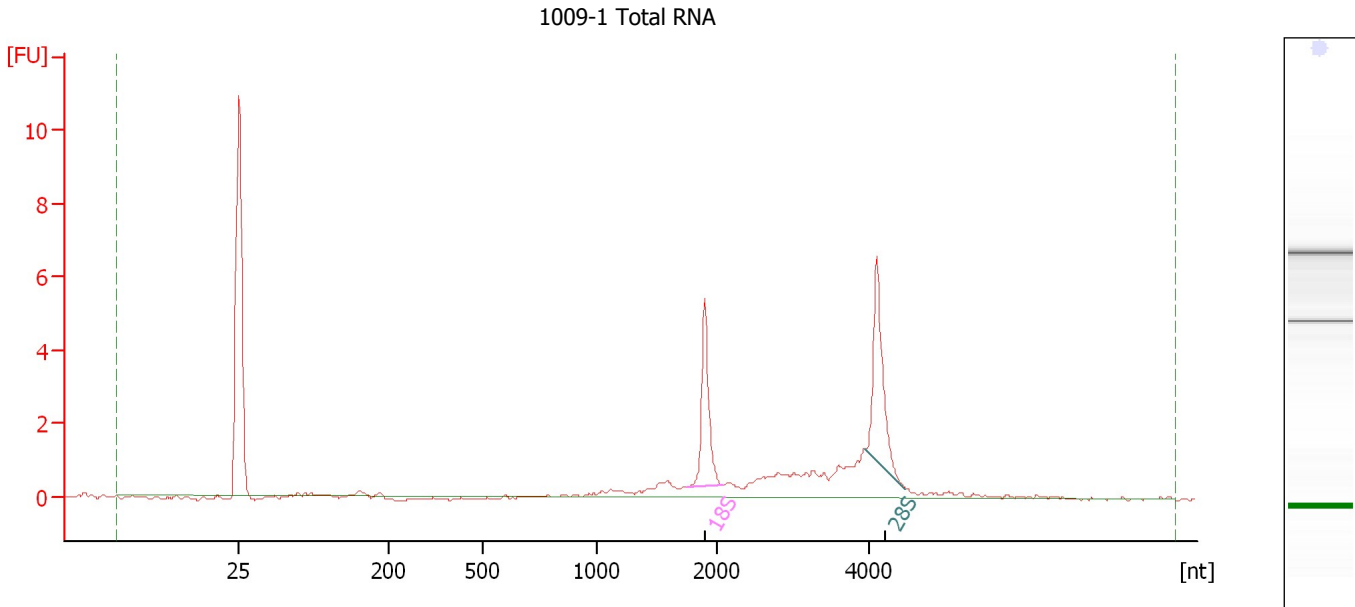
Fragment table for sample 3 : 1006-1 Total RNA

Name	Start Size [nt]	End Size [nt]	Area	% of total Area
18S	1,629	1,979	76.3	18.7
28S	3,696	4,427	81.9	20.1

Assay Class: Eukaryote Total RNA Nano
Data Path: C:\...ents and Settings\Bioanalyzer\2014-01-23\2014-01-23_001.xad

Created: 1/23/2014 2:19:24 PM
Modified: 1/23/2014 2:43:14 PM

Electropherogram Summary Continued ...



Overall Results for sample 4 : 1009-1 Total RNA

RNA Area: 24.8 RNA Integrity Number (RIN): 8.5 (B.02.08)
RNA Concentration: 12 ng/μl Result Flagging Color:
rRNA Ratio [28s / 18s]: 1.2 Result Flagging Label: RIN: 8.50

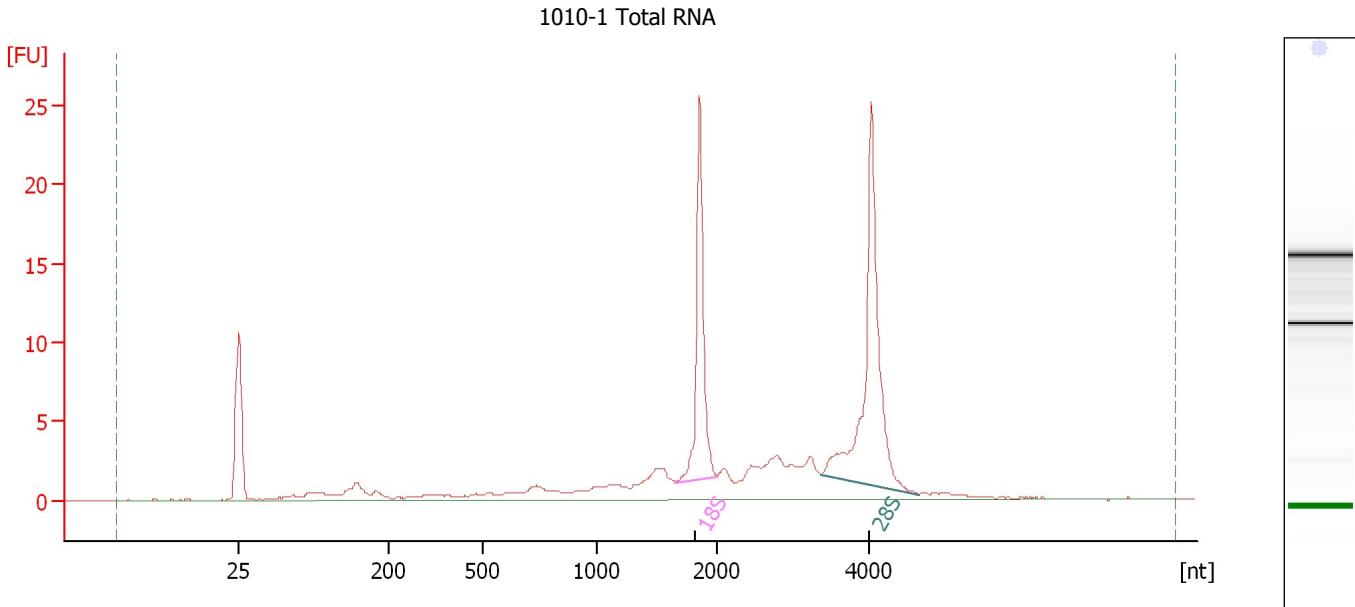
Fragment table for sample 4 : 1009-1 Total RNA

Name	Start Size [nt]	End Size [nt]	Area	% of total Area
18S	1,760	2,085	4.2	16.8
28S	3,940	4,470	5.1	20.5

Assay Class: Eukaryote Total RNA Nano
 Data Path: C:\...ents and Settings\Bioanalyzer\2014-01-23\2014-01-23_001.xad

Created: 1/23/2014 2:19:24 PM
 Modified: 1/23/2014 2:43:14 PM

Electropherogram Summary Continued ...



Overall Results for sample 5 : 1010-1 Total RNA

RNA Area:	114.1	RNA Integrity Number (RIN):	8.6 (B.02.08)
RNA Concentration:	55 ng/μl	Result Flagging Color:	
rRNA Ratio [28s / 18s]:	1.6	Result Flagging Label:	RIN: 8.60

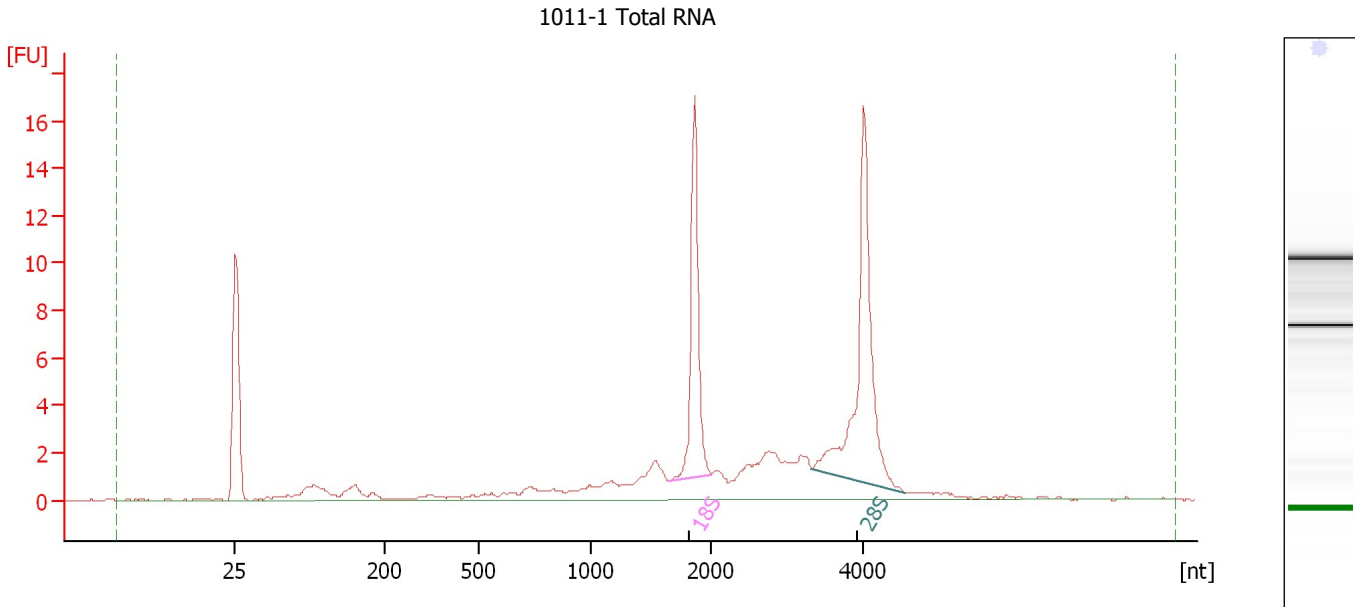
Fragment table for sample 5 : 1010-1 Total RNA

Name	Start Size [nt]	End Size [nt]	Area	% of total Area
18S	1,662	2,016	19.6	17.2
28S	3,368	4,638	31.5	27.6

Assay Class: Eukaryote Total RNA Nano
Data Path: C:\...ents and Settings\Bioanalyzer\2014-01-23\2014-01-23_001.xad

Created: 1/23/2014 2:19:24 PM
Modified: 1/23/2014 2:43:14 PM

Electropherogram Summary Continued ...



Overall Results for sample 6 : 1011-1 Total RNA

RNA Area: 78.2 RNA Integrity Number (RIN): 8.7 (B.02.08)
RNA Concentration: 38 ng/μl Result Flagging Color:
rRNA Ratio [28s / 18s]: 1.6 Result Flagging Label: RIN: 8.70

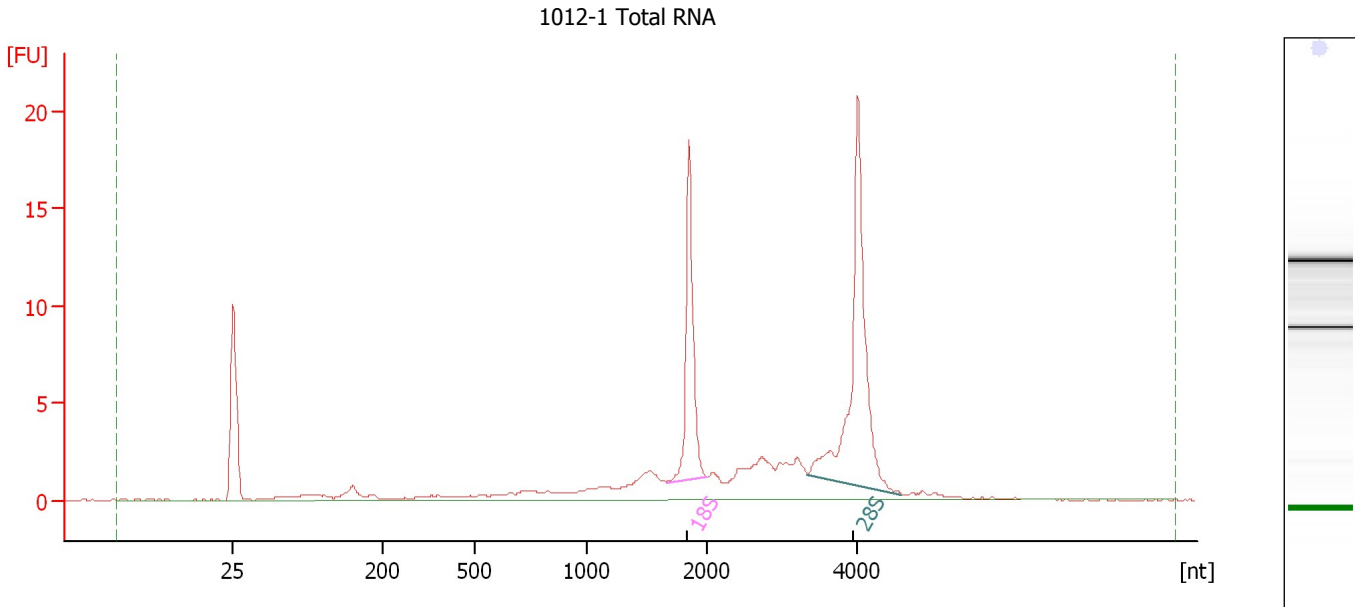
Fragment table for sample 6 : 1011-1 Total RNA

Name	Start Size [nt]	End Size [nt]	Area	% of total Area
18S	1,657	2,011	13.0	16.6
28S	3,330	4,564	20.5	26.2

Assay Class: Eukaryote Total RNA Nano
Data Path: C:\...ents and Settings\Bioanalyzer\2014-01-23\2014-01-23_001.xad

Created: 1/23/2014 2:19:24 PM
Modified: 1/23/2014 2:43:14 PM

Electropherogram Summary Continued ...



Overall Results for sample 7 : 1012-1 Total RNA

RNA Area: 85.4 RNA Integrity Number (RIN): 8.7 (B.02.08)
RNA Concentration: 41 ng/μl Result Flagging Color:
rRNA Ratio [28s / 18s]: 1.9 Result Flagging Label: RIN: 8.70

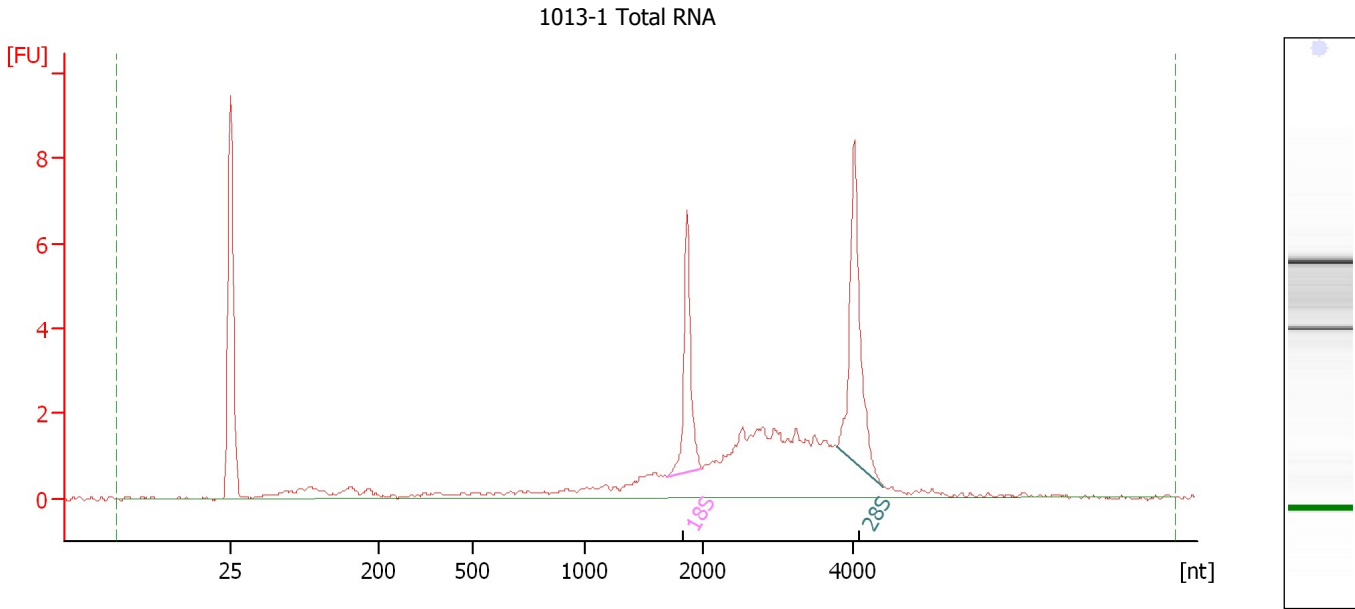
Fragment table for sample 7 : 1012-1 Total RNA

Name	Start Size [nt]	End Size [nt]	Area	% of total Area
18S	1,663	2,022	13.9	16.3
28S	3,332	4,571	26.4	30.9

Assay Class: Eukaryote Total RNA Nano
Data Path: C:\...ents and Settings\Bioanalyzer\2014-01-23\2014-01-23_001.xad

Created: 1/23/2014 2:19:24 PM
Modified: 1/23/2014 2:43:14 PM

Electropherogram Summary Continued ...



Overall Results for sample 8 : 1013-1 Total RNA

RNA Area: 44.2 RNA Integrity Number (RIN): 8.1 (B.02.08)
RNA Concentration: 21 ng/μl Result Flagging Color:
rRNA Ratio [28s / 18s]: 1.5 Result Flagging Label: RIN: 8.10

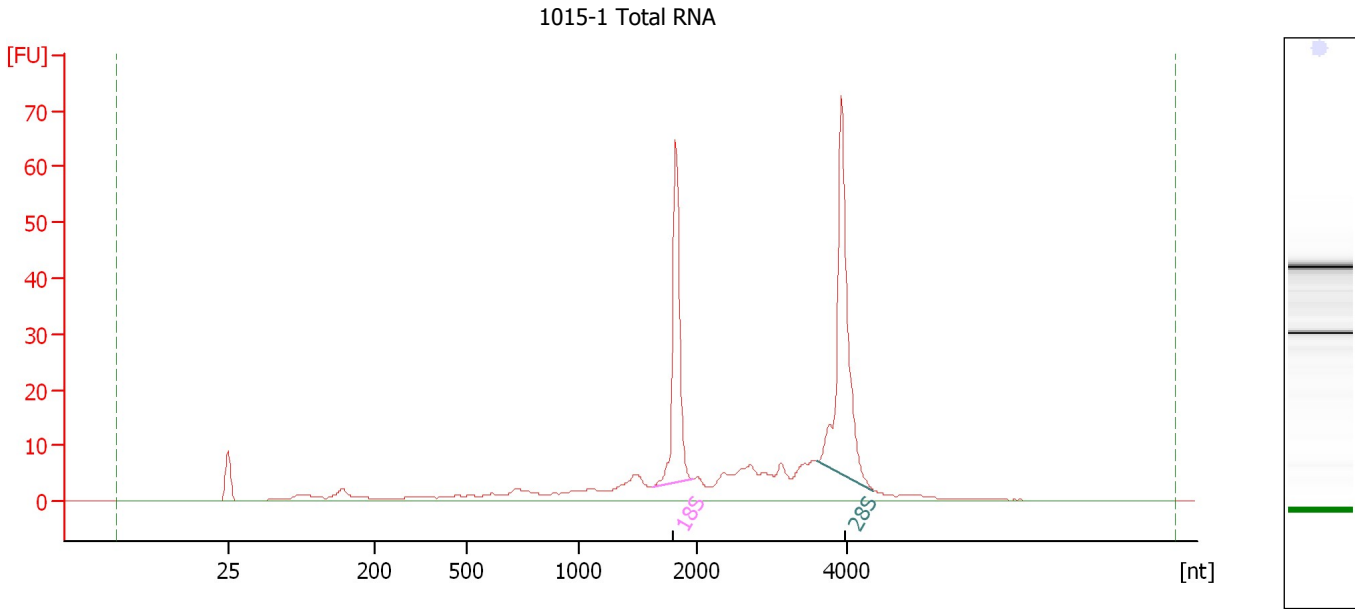
Fragment table for sample 8 : 1013-1 Total RNA

Name	Start Size [nt]	End Size [nt]	Area	% of total Area
18S	1,696	1,994	5.0	11.3
28S	3,787	4,395	7.6	17.2

Assay Class: Eukaryote Total RNA Nano
Data Path: C:\...ents and Settings\Bioanalyzer\2014-01-23\2014-01-23_001.xad

Created: 1/23/2014 2:19:24 PM
Modified: 1/23/2014 2:43:14 PM

Electropherogram Summary Continued ...



Overall Results for sample 9 : 1015-1 Total RNA

RNA Area: 283.5 RNA Integrity Number (RIN): 8.5 (B.02.08)
RNA Concentration: 136 ng/μl Result Flagging Color:
rRNA Ratio [28s / 18s]: 1.5 Result Flagging Label: RIN: 8.50

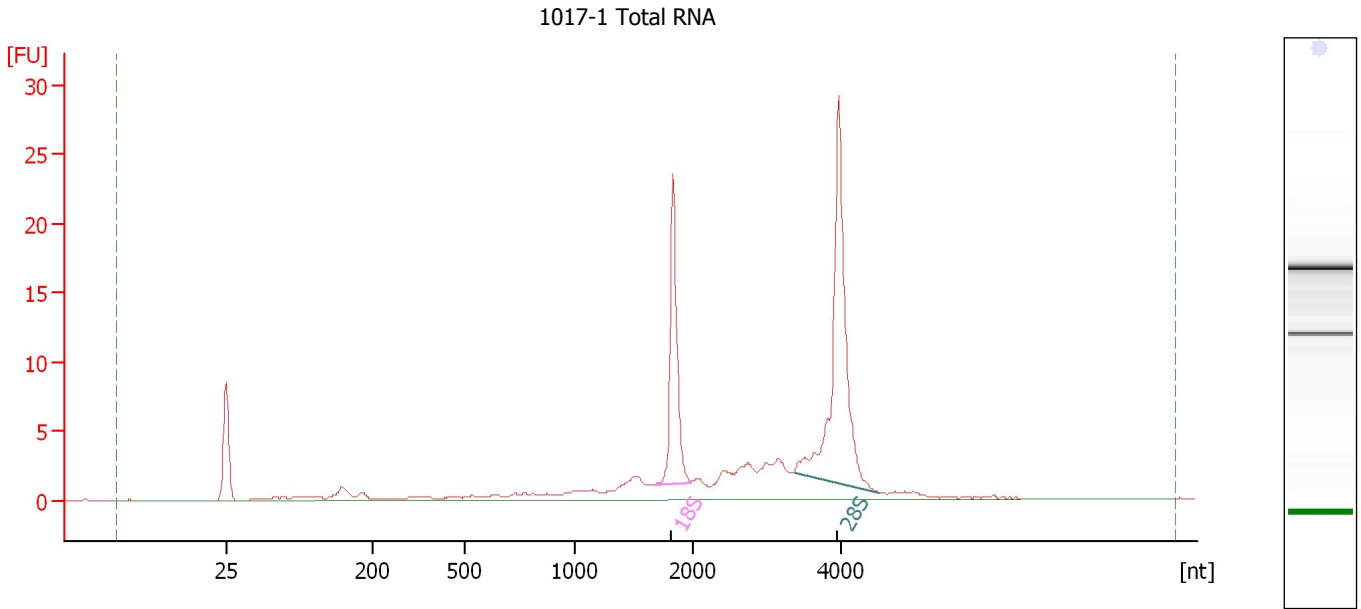
Fragment table for sample 9 : 1015-1 Total RNA

Name	Start Size [nt]	End Size [nt]	Area	% of total Area
18S	1,636	1,972	48.4	17.1
28S	3,608	4,362	72.6	25.6

Assay Class: Eukaryote Total RNA Nano
 Data Path: C:\...ents and Settings\Bioanalyzer\2014-01-23\2014-01-23_001.xad

Created: 1/23/2014 2:19:24 PM
 Modified: 1/23/2014 2:43:14 PM

Electropherogram Summary Continued ...



Overall Results for sample 10 : 1017-1 Total RNA

RNA Area:	109.0	RNA Integrity Number (RIN):	9 (B.02.08)
RNA Concentration:	52 ng/μl	Result Flagging Color:	
rRNA Ratio [28s / 18s]:	2.0	Result Flagging Label:	RIN:9

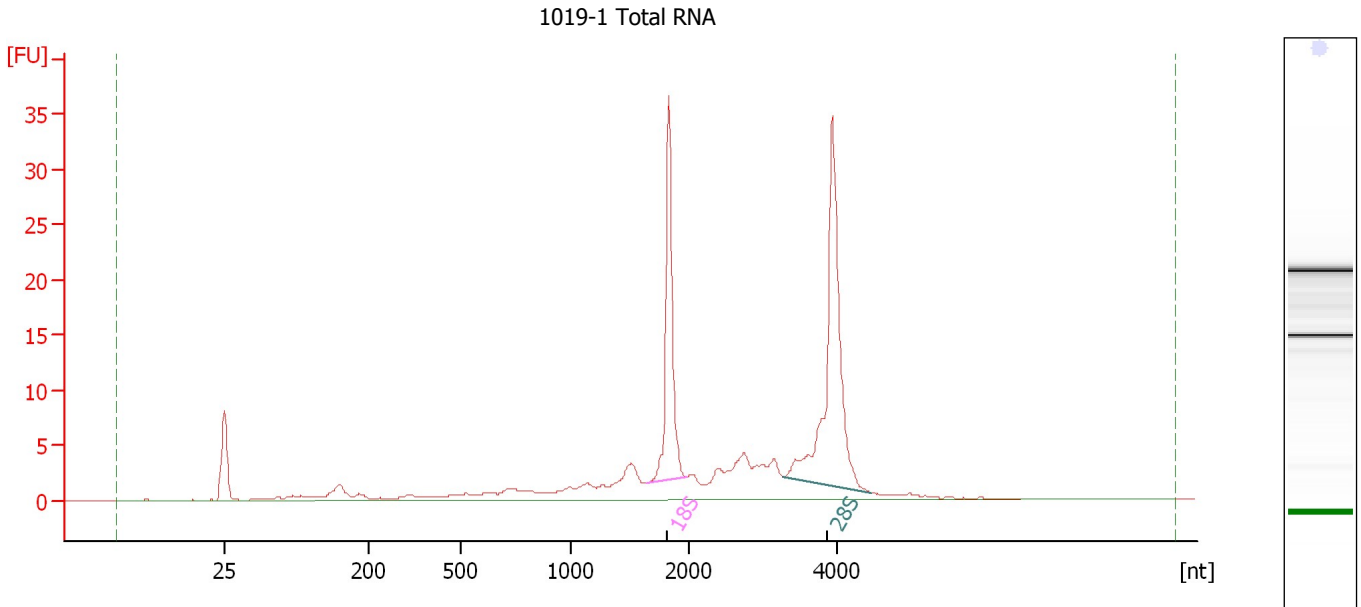
Fragment table for sample 10 : 1017-1 Total RNA

Name	Start Size [nt]	End Size [nt]	Area	% of total Area
18S	1,660	1,988	17.7	16.3
28S	3,368	4,497	35.2	32.3

Assay Class: Eukaryote Total RNA Nano
 Data Path: C:\...ents and Settings\Bioanalyzer\2014-01-23\2014-01-23_001.xad

Created: 1/23/2014 2:19:24 PM
 Modified: 1/23/2014 2:43:14 PM

Electropherogram Summary Continued ...



Overall Results for sample 11 : 1019-1 Total RNA

RNA Area:	155.4	RNA Integrity Number (RIN):	8.6 (B.02.08)
RNA Concentration:	75 ng/μl	Result Flagging Color:	
rRNA Ratio [28s / 18s]:	1.6	Result Flagging Label:	RIN: 8.60

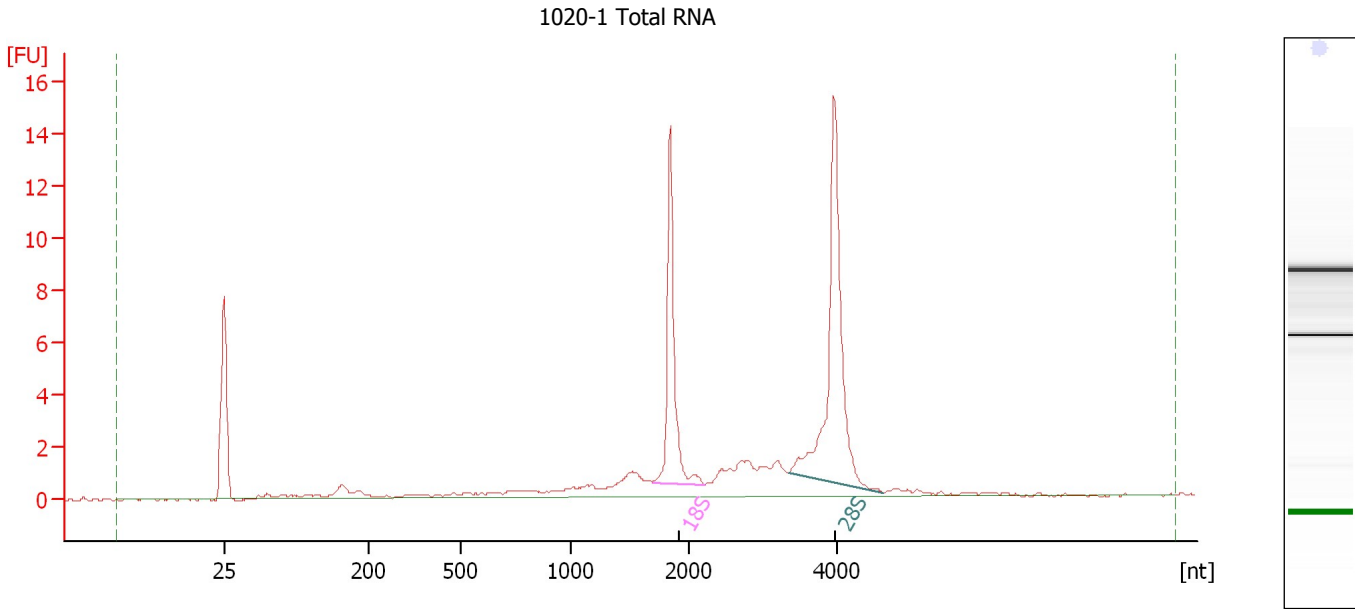
Fragment table for sample 11 : 1019-1 Total RNA

Name	Start Size [nt]	End Size [nt]	Area	% of total Area
18S	1,638	1,986	27.6	17.8
28S	3,284	4,461	44.1	28.4

Assay Class: Eukaryote Total RNA Nano
Data Path: C:\...ents and Settings\Bioanalyzer\2014-01-23\2014-01-23_001.xad

Created: 1/23/2014 2:19:24 PM
Modified: 1/23/2014 2:43:14 PM

Electropherogram Summary Continued ...



Overall Results for sample 12 : 1020-1 Total RNA

RNA Area: 57.8 RNA Integrity Number (RIN): 8.9 (B.02.08)
RNA Concentration: 28 ng/μl Result Flagging Color:
rRNA Ratio [28s / 18s]: 1.7 Result Flagging Label: RIN: 8.90

Fragment table for sample 12 : 1020-1 Total RNA

Name	Start Size [nt]	End Size [nt]	Area	% of total Area
18S	1,693	2,223	11.1	19.1
28S	3,342	4,604	18.4	31.8

Assay Class: Eukaryote Total RNA Nano
Data Path: C:\...ents and Settings\Bioanalyzer\2014-01-23\2014-01-23_001.xad

Created: 1/23/2014 2:19:24 PM
Modified: 1/23/2014 2:43:14 PM

Gel Image

