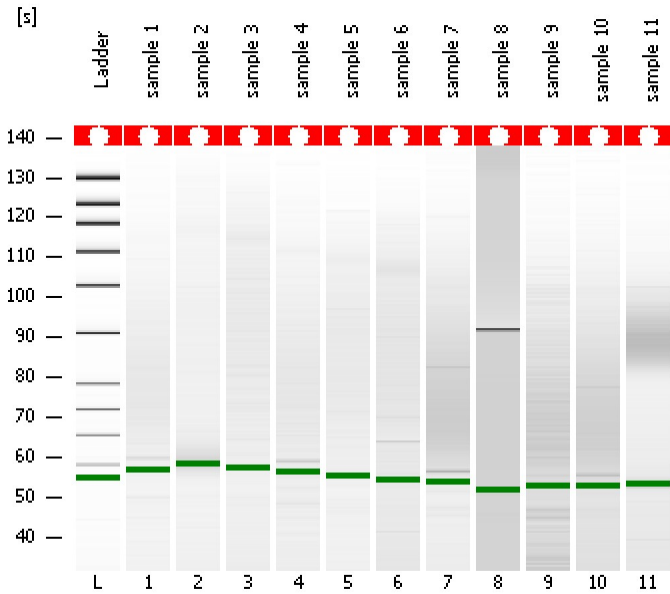


Assay Class: High Sensitivity DNA Assay  
Data Path: C:\...ents and Settings\Bioanalyzer\2014-01-24\2014-01-24\_002.xad

Created: 1/24/2014 1:43:15 PM  
Modified: 1/24/2014 2:25:35 PM

**Electrophoresis File Run Summary**



Instrument Information:

Instrument Name: DE13701086      Firmware: C.01.069  
Serial#: DE13701086      Type: G2938B

Assay Information:

Assay Origin Path: C:\Program Files\Agilent\2100 bioanalyzer\2100 expert\assays\dsDNA\High Sensitivity DNA.xsy  
Assay Class: High Sensitivity DNA Assay  
Version: 1.03  
Assay Comments: Copyright © 2003-2010 Agilent Technologies

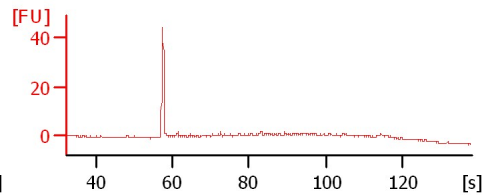
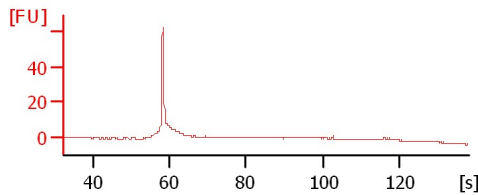
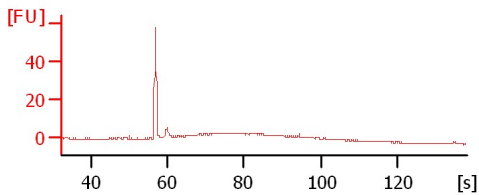
Chip Information:

Chip Lot #:        
Reagent Kit Lot #:        
Chip Comments:

sample 1

sample 2

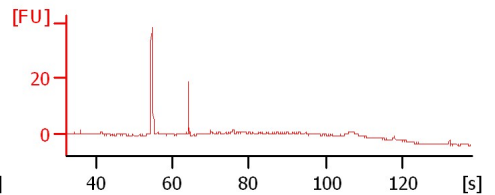
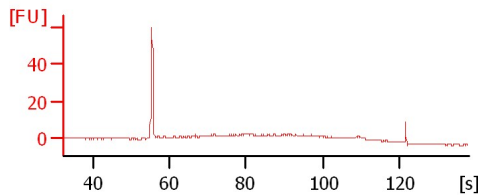
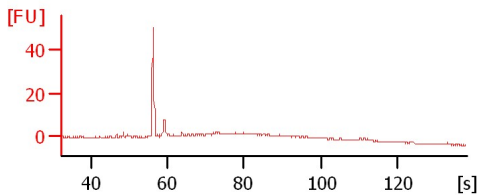
sample 3



sample 4

sample 5

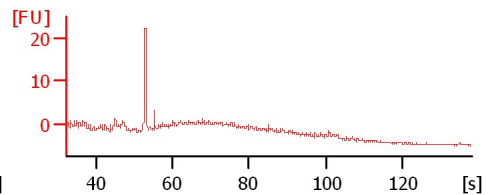
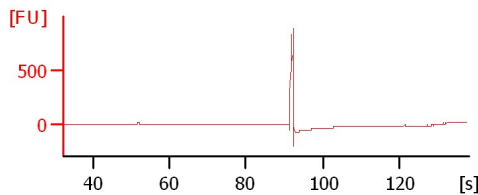
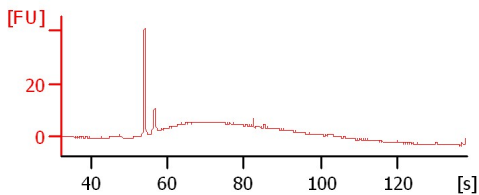
sample 6



sample 7

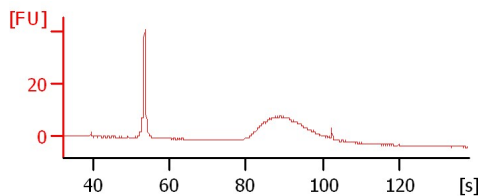
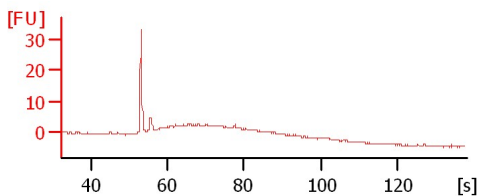
sample 8

sample 9



sample 10

sample 11



Assay Class: High Sensitivity DNA Assay  
Data Path: C:\...ents and Settings\Bioanalyzer\2014-01-24\2014-01-24\_002.xad

Created: 1/24/2014 1:43:15 PM  
Modified: 1/24/2014 2:25:35 PM

**Electrophoresis File Run Summary (Chip Summary)**

Sample Name	Sample Comment	Rest. Digest	Status	Observation	Result Label	Result Color
sample 1		<input type="checkbox"/>	✓			
sample 2		<input type="checkbox"/>	✓			
sample 3		<input type="checkbox"/>	✓			
sample 4		<input type="checkbox"/>	✓			
sample 5		<input type="checkbox"/>	✓			
sample 6		<input type="checkbox"/>	✓			
sample 7		<input type="checkbox"/>	✓			
sample 8		<input type="checkbox"/>	✓			
sample 9		<input type="checkbox"/>	✓			
sample 10		<input type="checkbox"/>	✓			
sample 11		<input type="checkbox"/>	✓			
Ladder		<input type="checkbox"/>	✓			

**Chip Lot #**

**Reagent Kit Lot #**

**Chip Comments :**

Assay Class: High Sensitivity DNA Assay  
Data Path: C:\...ents and Settings\Bioanalyzer\2014-01-24\2014-01-24\_002.xad

Created: 1/24/2014 1:43:15 PM  
Modified: 1/24/2014 2:25:35 PM

**Electrophoresis Assay Details**

**General Analysis Settings**

Number of Available Sample and Ladder Wells (Max.) : 12  
Minimum Visible Range [s] : 32  
Maximum Visible Range [s] : 138  
Start Analysis Time Range [s] : 33  
End Analysis Time Range [s] : 137.5  
Ladder Concentration [pg/μl] : 1950  
Uses Standard Area for Ladder Fragments  
Lower Marker Concentration [pg/μl] : 125  
Upper Marker Concentration [pg/μl] : 75  
Used Upper Marker for Quantitation  
Standard Curve Fit is Point to Point  
Show Data Aligned to Lower and Upper Marker

**Integrator Settings**

Integration Start Time [s] : 33.05  
Integration End Time [s] : 137  
Slope Threshold : 0.8  
Height Threshold [FU] : 5  
Area Threshold : 0.1  
Width Threshold [s] : 0.6  
Baseline Plateau [s] : 0.5

**Filter Settings**

Filter Width [s] : 0.5  
Polynomial Order : 4

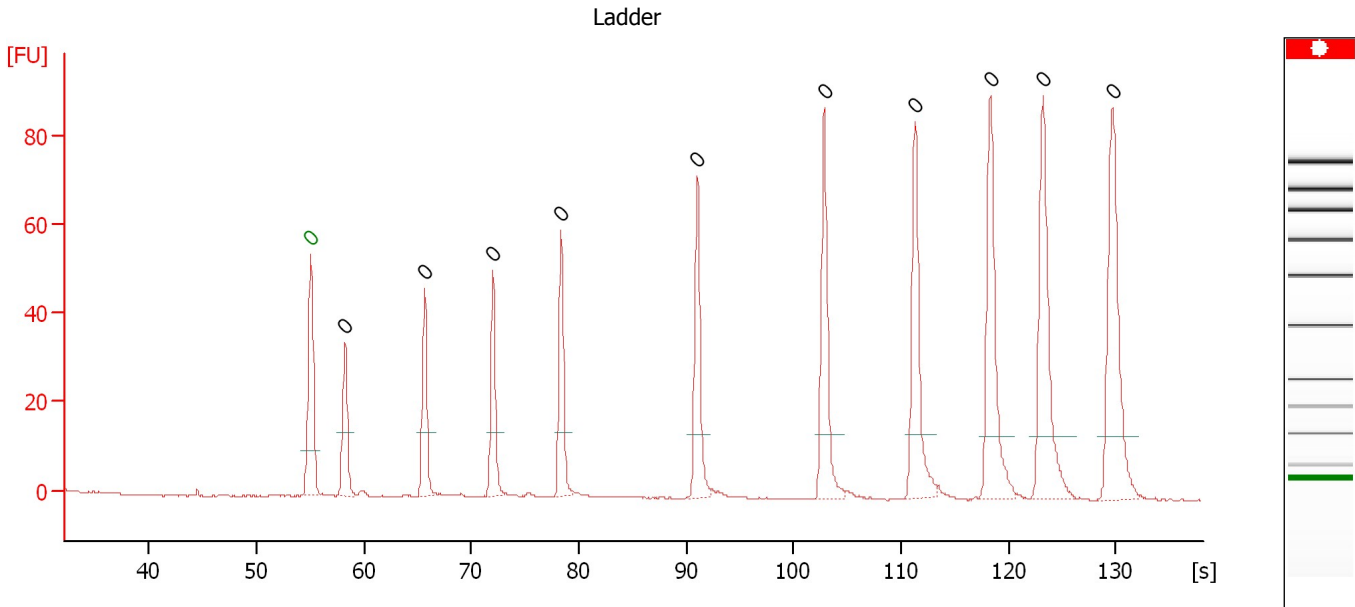
**Ladder**

Ladder Peak	Size	Area
1	35	160
2	50	210
3	100	208
4	150	221
5	200	242
6	300	270
7	400	305
8	500	306
9	600	336
10	700	321
11	1000	366
12	2000	413
13	3000	411
14	7000	400
15	10380	214

Assay Class: High Sensitivity DNA Assay  
 Data Path: C:\...ents and Settings\Bioanalyzer\2014-01-24\2014-01-24\_002.xad

Created: 1/24/2014 1:43:15 PM  
 Modified: 1/24/2014 2:25:35 PM

**Electropherogram Summary**



**Overall Results for Ladder**

Noise: 0.2

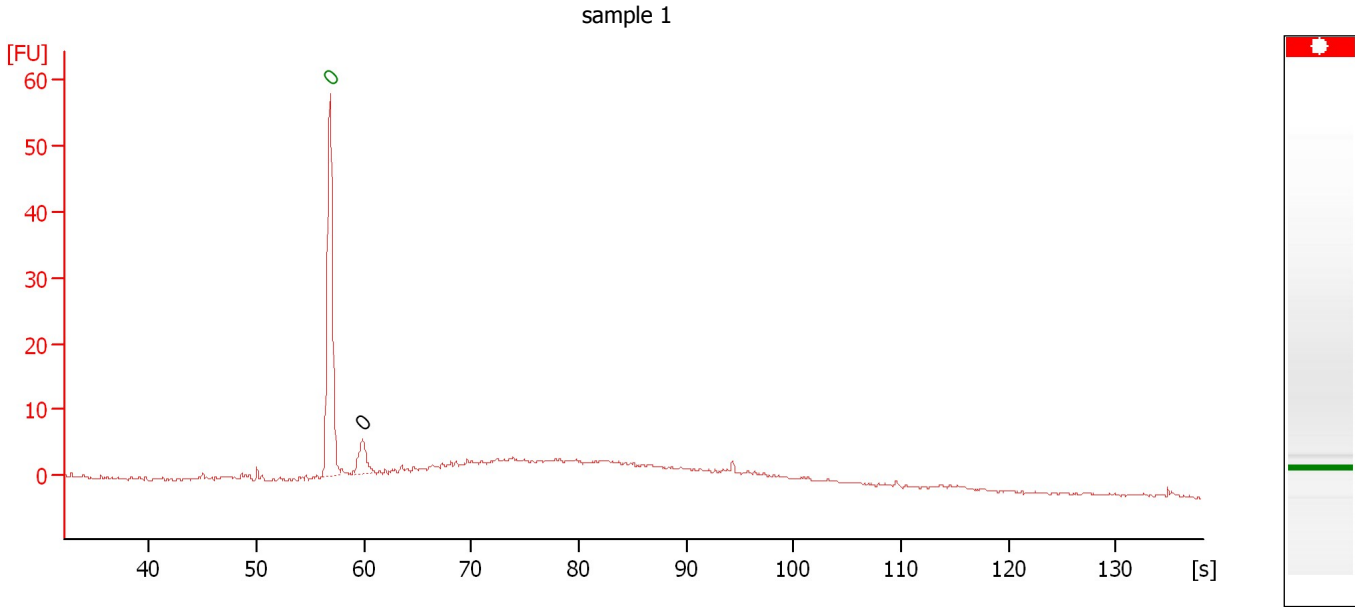
**Peak table for Ladder**

Peak	Aligned Migration Time [s]	Size [bp]	Conc. [pg/μl]	Molarity [pmol/l]	Observations
1	55.05	0	0.00	0.0	Lower Marker
2	58.25	0	0.00	0.0	Ladder Peak
3	65.65	0	0.00	0.0	Ladder Peak
4	72.00	0	0.00	0.0	Ladder Peak
5	78.35	0	0.00	0.0	Ladder Peak
6	91.05	0	0.00	0.0	Ladder Peak
7	102.85	0	0.00	0.0	Ladder Peak
8	111.30	0	0.00	0.0	Ladder Peak
9	118.30	0	0.00	0.0	Ladder Peak
10	123.20	0	0.00	0.0	Ladder Peak
11	129.70	0	0.00	0.0	Ladder Peak

Assay Class: High Sensitivity DNA Assay  
Data Path: C:\...ents and Settings\Bioanalyzer\2014-01-24\2014-01-24\_002.xad

Created: 1/24/2014 1:43:15 PM  
Modified: 1/24/2014 2:25:35 PM

**Electropherogram Summary Continued ...**



**Overall Results for sample 1 : sample 1**

Number of peaks found: 1                      Noise: 0.2

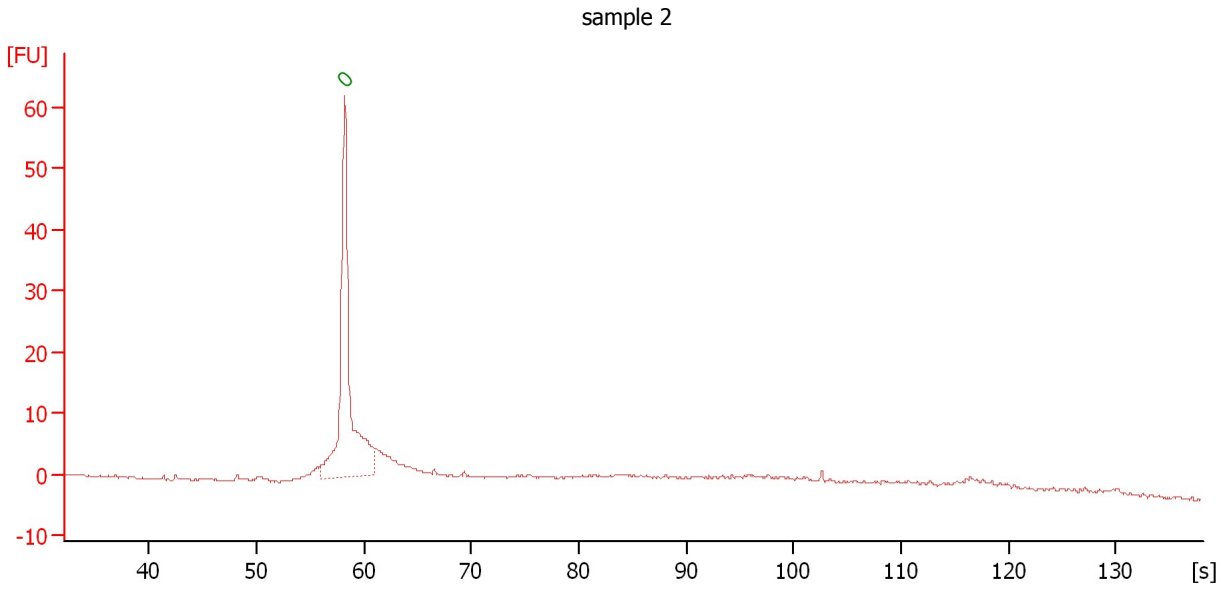
**Peak table for sample 1 : sample 1**

Peak	Aligned Migration Time [s]	Size [bp]	Conc. [pg/μl]	Molarity [pmol/l]	Observations
1	56.85	0	0.00	0.0	Lower Marker
2	59.90	0	0.00	0.0	

Assay Class: High Sensitivity DNA Assay  
Data Path: C:\...ents and Settings\Bioanalyzer\2014-01-24\2014-01-24\_002.xad

Created: 1/24/2014 1:43:15 PM  
Modified: 1/24/2014 2:25:35 PM

**Electropherogram Summary Continued ...**



**Overall Results for sample 2 : sample 2**

Number of peaks found: 0                      Noise: 0.2

**Peak table for sample 2 : sample 2**

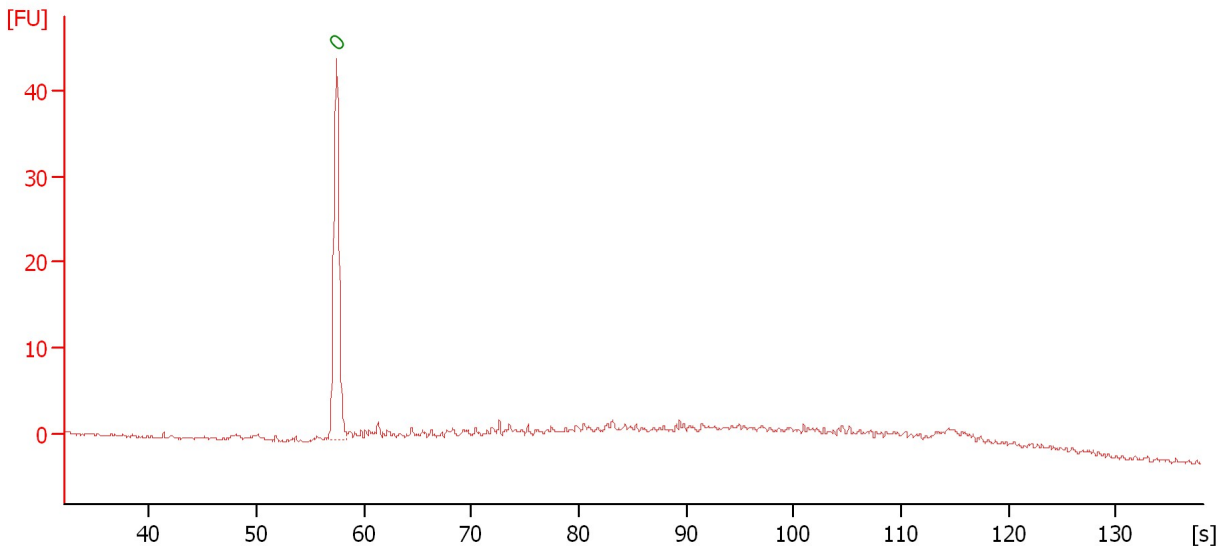
Peak	Aligned Migration Time [s]	Size [bp]	Conc. [pg/ $\mu$ l]	Molarity [pmol/l]	Observations
1	58.20	0	0.00	0.0	Lower Marker

Assay Class: High Sensitivity DNA Assay  
Data Path: C:\...ents and Settings\Bioanalyzer\2014-01-24\2014-01-24\_002.xad

Created: 1/24/2014 1:43:15 PM  
Modified: 1/24/2014 2:25:35 PM

**Electropherogram Summary Continued ...**

sample 3



**Overall Results for sample 3 : sample 3**

Number of peaks found: 0                      Noise: 0.2

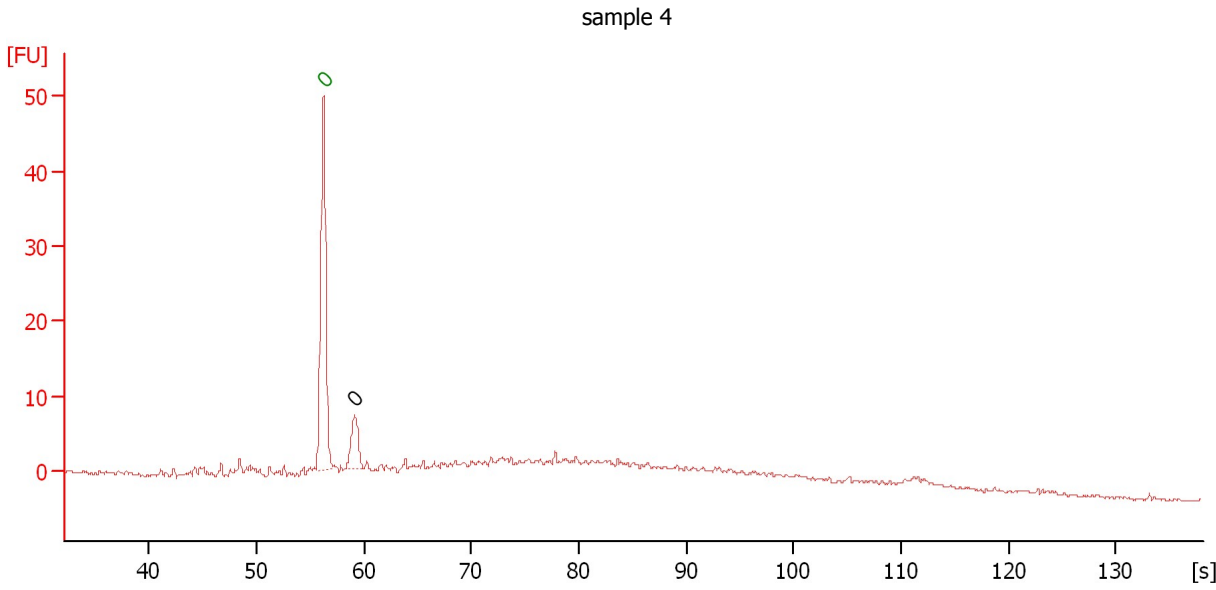
**Peak table for sample 3 : sample 3**

Peak	Aligned Migration Time [s]	Size [bp]	Conc. [pg/μl]	Molarity [pmol/l]	Observations
1	57.45	0	0.00	0.0	Lower Marker

Assay Class: High Sensitivity DNA Assay  
Data Path: C:\...ents and Settings\Bioanalyzer\2014-01-24\2014-01-24\_002.xad

Created: 1/24/2014 1:43:15 PM  
Modified: 1/24/2014 2:25:35 PM

**Electropherogram Summary Continued ...**



**Overall Results for sample 4 : sample 4**

Number of peaks found: 1                      Noise: 0.3

**Peak table for sample 4 : sample 4**

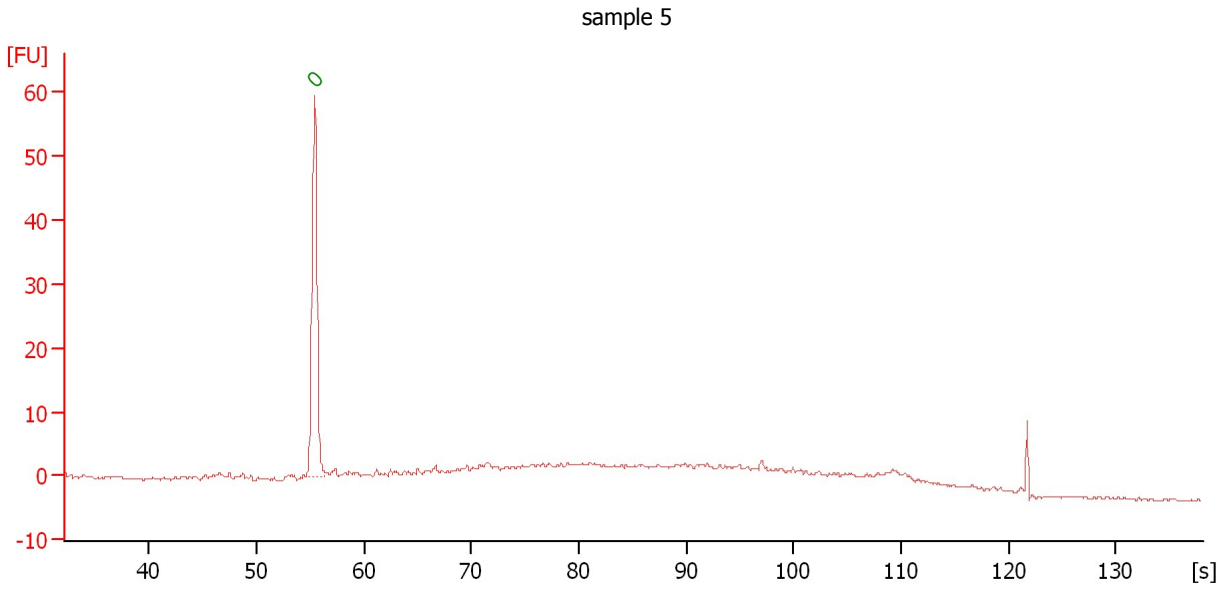
Peak	Aligned Migration Time [s]	Size [bp]	Conc. [pg/μl]	Molarity [pmol/l]	Observations
1	56.25	0	0.00	0.0	Lower Marker
2	59.10	0	0.00	0.0	



Assay Class: High Sensitivity DNA Assay  
Data Path: C:\...ents and Settings\Bioanalyzer\2014-01-24\2014-01-24\_002.xad

Created: 1/24/2014 1:43:15 PM  
Modified: 1/24/2014 2:25:35 PM

**Electropherogram Summary Continued ...**



**Overall Results for sample 5 : sample 5**

Number of peaks found: 0                      Noise: 0.2

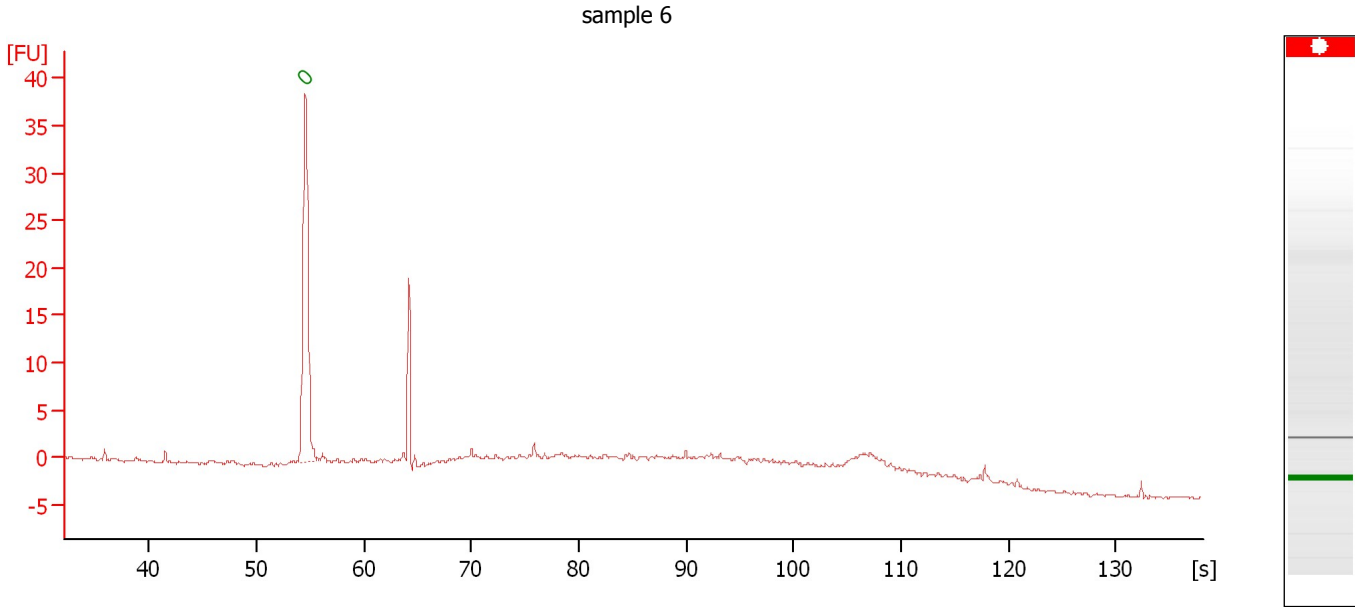
**Peak table for sample 5 : sample 5**

Peak	Aligned Migration Time [s]	Size [bp]	Conc. [pg/ $\mu$ l]	Molarity [pmol/l]	Observations
1	55.40	0	0.00	0.0	Lower Marker

Assay Class: High Sensitivity DNA Assay  
Data Path: C:\...ents and Settings\Bioanalyzer\2014-01-24\2014-01-24\_002.xad

Created: 1/24/2014 1:43:15 PM  
Modified: 1/24/2014 2:25:35 PM

**Electropherogram Summary Continued ...**



**Overall Results for sample 6 : sample 6**

Number of peaks found: 0                      Noise: 0.1

**Peak table for sample 6 : sample 6**

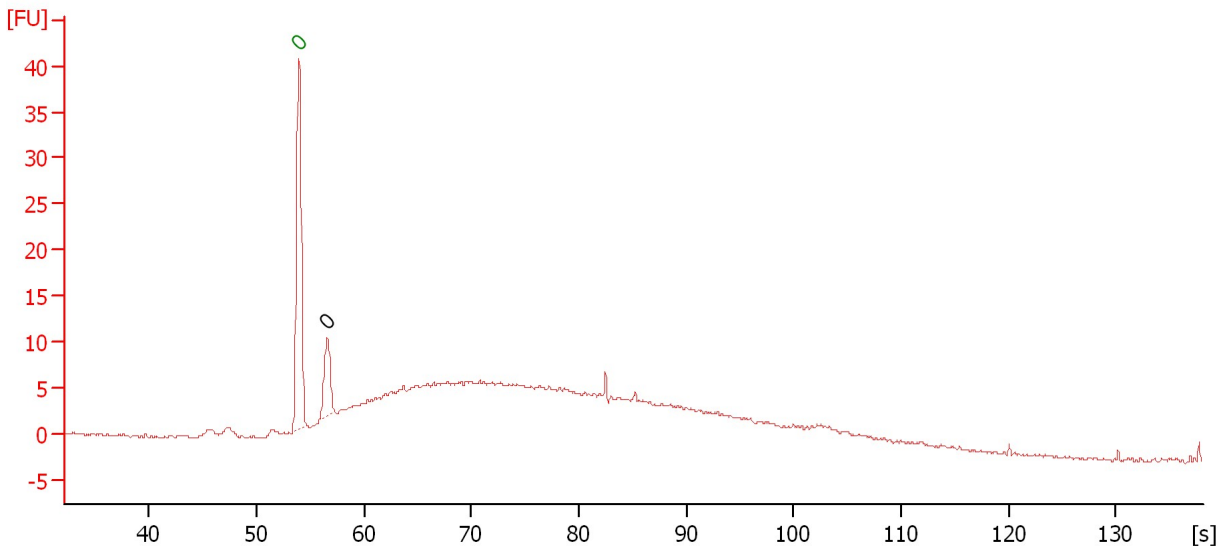
Peak	Aligned Migration Time [s]	Size [bp]	Conc. [pg/μl]	Molarity [pmol/l]	Observations
1	54.55	0	0.00	0.0	Lower Marker

Assay Class: High Sensitivity DNA Assay  
Data Path: C:\...ents and Settings\Bioanalyzer\2014-01-24\2014-01-24\_002.xad

Created: 1/24/2014 1:43:15 PM  
Modified: 1/24/2014 2:25:35 PM

**Electropherogram Summary Continued ...**

sample 7



**Overall Results for sample 7 : sample 7**

Number of peaks found: 1                      Noise: 0.2

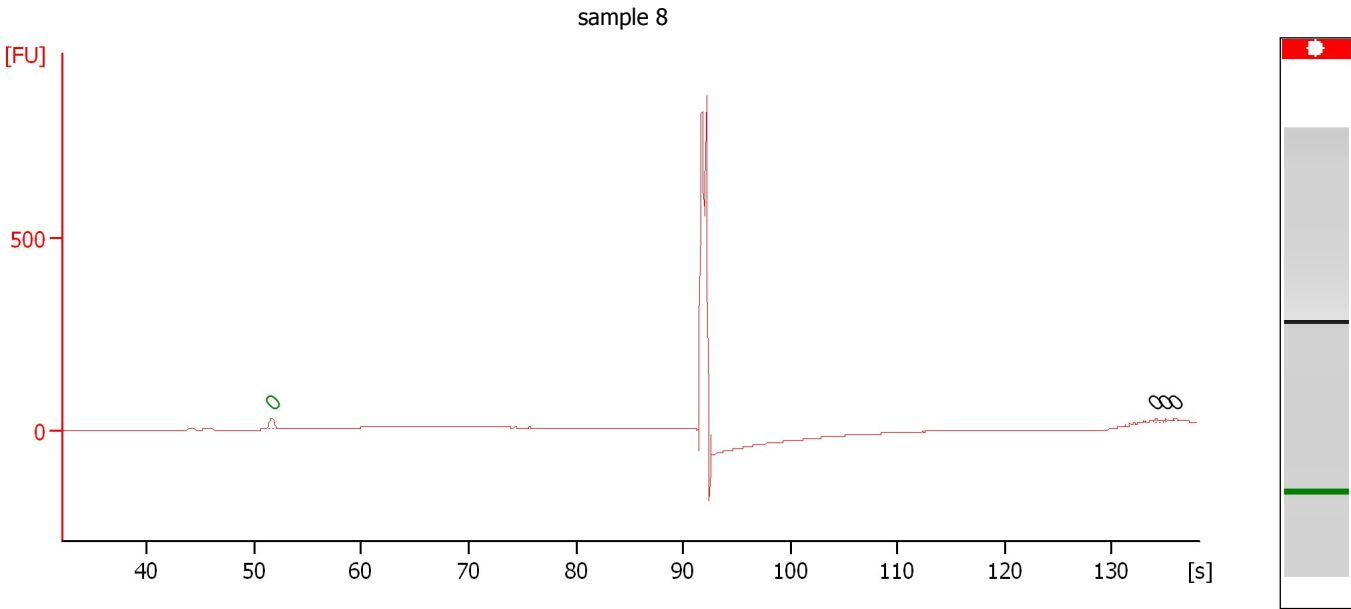
**Peak table for sample 7 : sample 7**

Peak	Aligned Migration Time [s]	Size [bp]	Conc. [pg/μl]	Molarity [pmol/l]	Observations
1	53.95	0	0.00	0.0	Lower Marker
2	56.60	0	0.00	0.0	

Assay Class: High Sensitivity DNA Assay  
Data Path: C:\...ents and Settings\Bioanalyzer\2014-01-24\2014-01-24\_002.xad

Created: 1/24/2014 1:43:15 PM  
Modified: 1/24/2014 2:25:35 PM

**Electropherogram Summary Continued ...**



**Overall Results for sample 8 : sample 8**

Number of peaks found: 3 Noise: 0.2

**Peak table for sample 8 : sample 8**

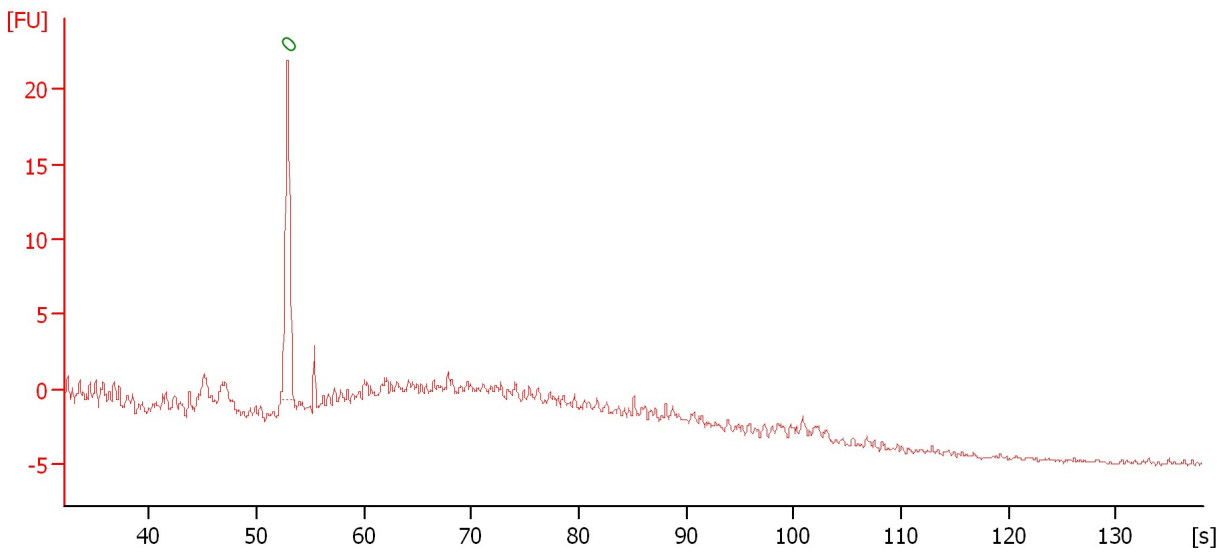
Peak	Aligned Migration Time [s]	Size [bp]	Conc. [pg/μl]	Molarity [pmol/l]	Observations
1	51.65	0	0.00	0.0	Lower Marker
2	134.05	0	0.00	0.0	
3	135.00	0	0.00	0.0	
4	135.95	0	0.00	0.0	

Assay Class: High Sensitivity DNA Assay  
Data Path: C:\...ents and Settings\Bioanalyzer\2014-01-24\2014-01-24\_002.xad

Created: 1/24/2014 1:43:15 PM  
Modified: 1/24/2014 2:25:35 PM

**Electropherogram Summary Continued ...**

sample 9



**Overall Results for sample 9 : sample 9**

Number of peaks found: 0                      Noise: 0.2

**Peak table for sample 9 : sample 9**

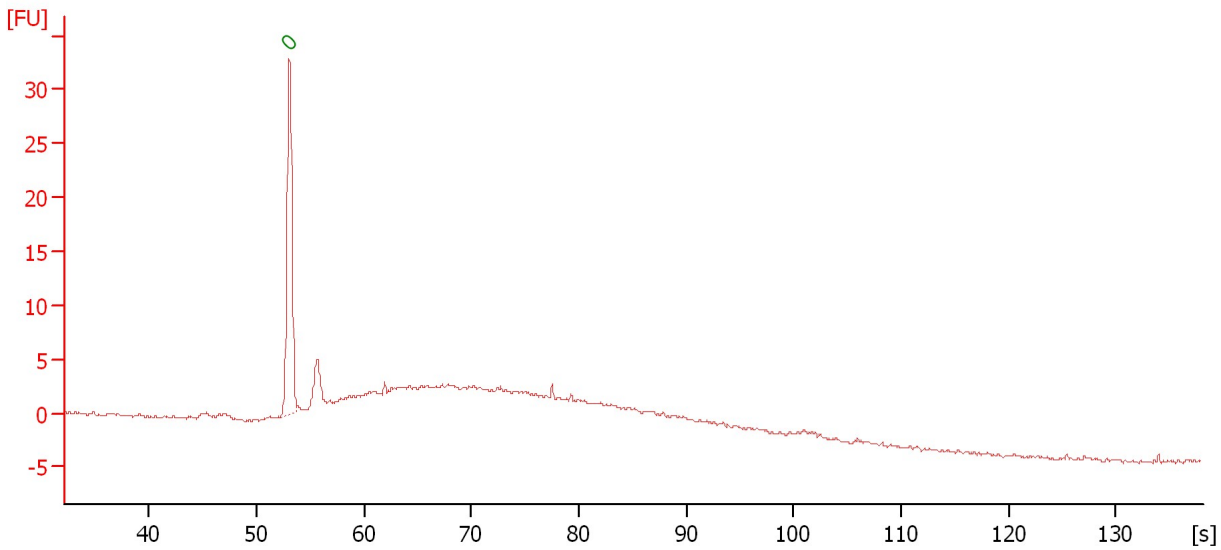
Peak	Aligned Migration Time [s]	Size [bp]	Conc. [pg/μl]	Molarity [pmol/l]	Observations
1	52.90	0	0.00	0.0	Lower Marker

Assay Class: High Sensitivity DNA Assay  
Data Path: C:\...ents and Settings\Bioanalyzer\2014-01-24\2014-01-24\_002.xad

Created: 1/24/2014 1:43:15 PM  
Modified: 1/24/2014 2:25:35 PM

**Electropherogram Summary Continued ...**

sample 10



**Overall Results for sample 10 : sample 10**

Number of peaks found: 0                      Noise: 0.2

**Peak table for sample 10 : sample 10**

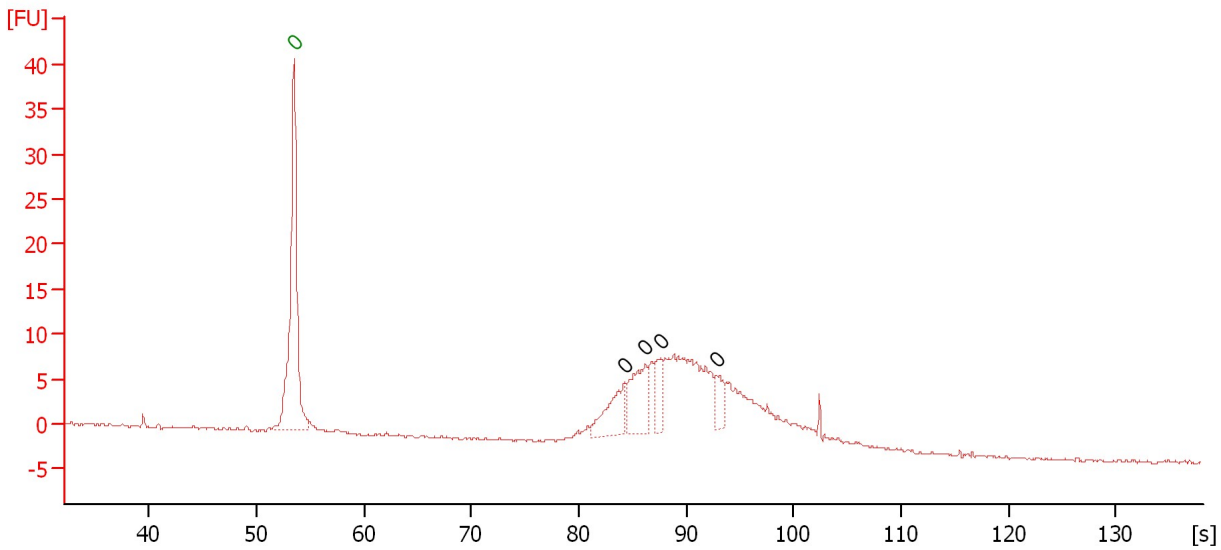
Peak	Aligned Migration Time [s]	Size [bp]	Conc. [pg/μl]	Molarity [pmol/l]	Observations
1	53.05	0	0.00	0.0	Lower Marker

Assay Class: High Sensitivity DNA Assay  
Data Path: C:\...ents and Settings\Bioanalyzer\2014-01-24\2014-01-24\_002.xad

Created: 1/24/2014 1:43:15 PM  
Modified: 1/24/2014 2:25:35 PM

**Electropherogram Summary Continued ...**

sample 11



**Overall Results for sample 11 : sample 11**

Number of peaks found: 4      Noise: 0.1

**Peak table for sample 11 : sample 11**

Peak	Aligned Migration Time [s]	Size [bp]	Conc. [pg/μl]	Molarity [pmol/l]	Observations
1	53.50	0	0.00	0.0	Lower Marker
2	84.25	0	0.00	0.0	
3	86.20	0	0.00	0.0	
4	87.65	0	0.00	0.0	
5	92.80	0	0.00	0.0	

Assay Class: High Sensitivity DNA Assay  
Data Path: C:\...ents and Settings\Bioanalyzer\2014-01-24\2014-01-24\_002.xad

Created: 1/24/2014 1:43:15 PM  
Modified: 1/24/2014 2:25:35 PM

**Gel Image**

