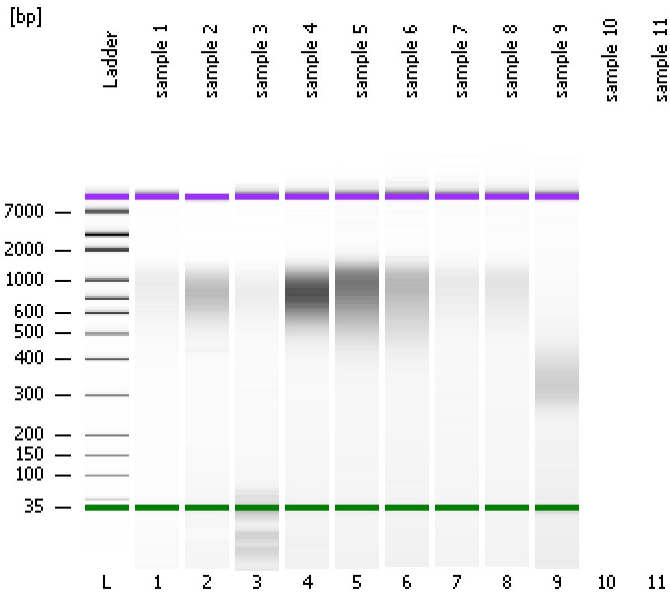


Assay Class: High Sensitivity DNA Assay
Data Path: C:\...ents and Settings\Bioanalyzer\2014-01-24\2014-01-24_004.xad

Created: 1/24/2014 3:38:01 PM
Modified: 1/24/2014 4:18:37 PM

Electrophoresis File Run Summary



Instrument Information:

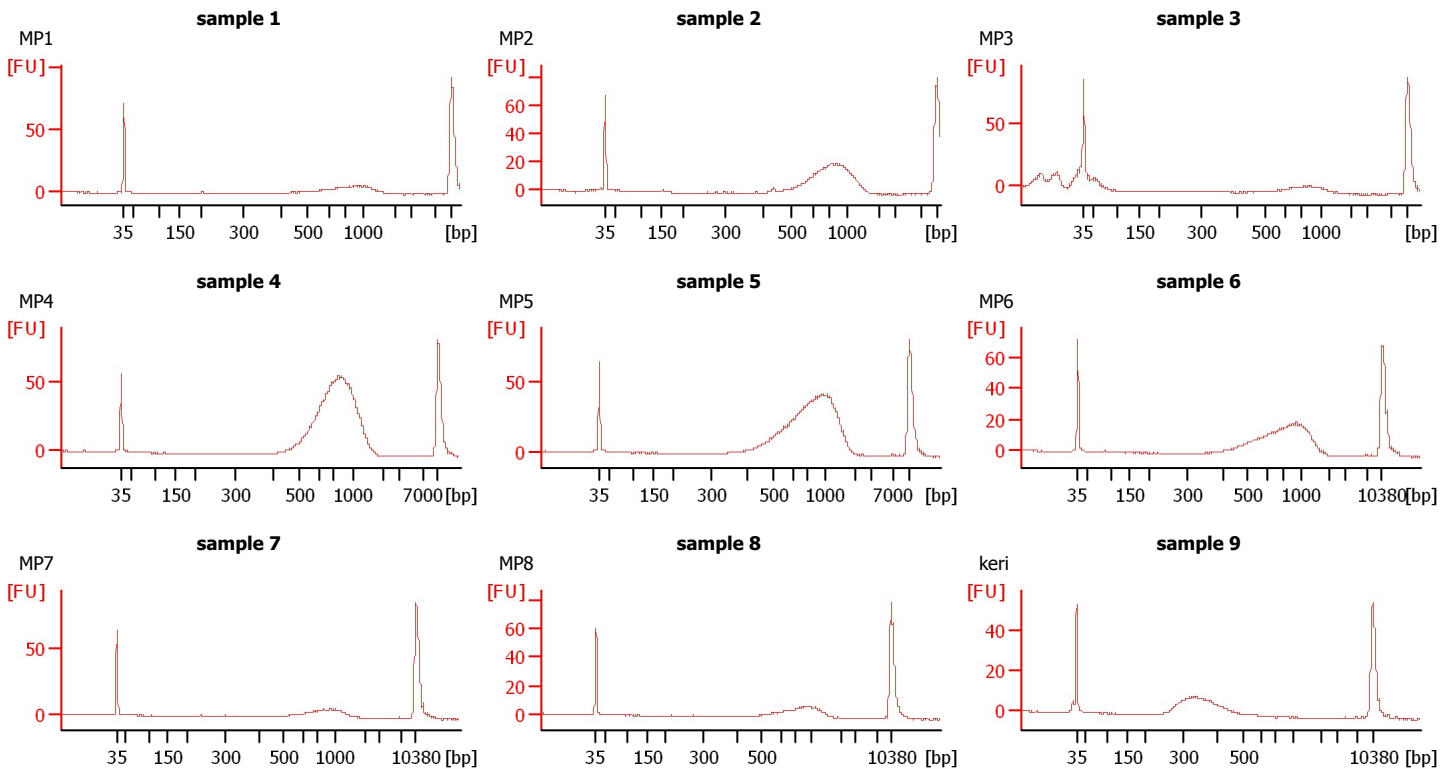
Instrument Name: DE13701086 Firmware: C.01.069
Serial#: DE13701086 Type: G2938B

Assay Information:

Assay Origin Path: C:\Program Files\Agilent\2100 bioanalyzer\2100 expert\assays\dsDNA\High Sensitivity DNA.xsy
Assay Class: High Sensitivity DNA Assay
Version: 1.03
Assay Comments: Copyright © 2003-2010 Agilent Technologies

Chip Information:

Chip Lot #: Reagent Kit Lot #:
Chip Comments:



Assay Class: High Sensitivity DNA Assay
 Data Path: C:\...ents and Settings\Bioanalyzer\2014-01-24\2014-01-24_004.xad

Created: 1/24/2014 3:38:01 PM
 Modified: 1/24/2014 4:18:37 PM

Electrophoresis File Run Summary (Chip Summary)

Sample Name	Sample Comment	Rest. Digest	Status	Observation	Result Label	Result Color
sample 1	MP1	<input type="checkbox"/>	✓			
sample 2	MP2	<input type="checkbox"/>	✓			
sample 3	MP3	<input type="checkbox"/>	✓			
sample 4	MP4	<input type="checkbox"/>	✓			
sample 5	MP5	<input type="checkbox"/>	✓			
sample 6	MP6	<input type="checkbox"/>	✓			
sample 7	MP7	<input type="checkbox"/>	✓			
sample 8	MP8	<input type="checkbox"/>	✓			
sample 9	keri	<input type="checkbox"/>	✓			
sample 10		<input type="checkbox"/>				
sample 11		<input type="checkbox"/>				
Ladder		<input type="checkbox"/>	✓			

Chip Lot #

Reagent Kit Lot #

Chip Comments :

Assay Class: High Sensitivity DNA Assay
Data Path: C:\...ents and Settings\Bioanalyzer\2014-01-24\2014-01-24_004.xad

Created: 1/24/2014 3:38:01 PM
Modified: 1/24/2014 4:18:37 PM

Electrophoresis Assay Details

General Analysis Settings

Number of Available Sample and Ladder Wells (Max.) : 12
Minimum Visible Range [s] : 32
Maximum Visible Range [s] : 138
Start Analysis Time Range [s] : 33
End Analysis Time Range [s] : 137.5
Ladder Concentration [pg/μl] : 1950
Uses Standard Area for Ladder Fragments
Lower Marker Concentration [pg/μl] : 125
Upper Marker Concentration [pg/μl] : 75
Used Upper Marker for Quantitation
Standard Curve Fit is Point to Point
Show Data Aligned to Lower and Upper Marker

Integrator Settings

Integration Start Time [s] : 33.05
Integration End Time [s] : 137
Slope Threshold : 0.8
Height Threshold [FU] : 5
Area Threshold : 0.1
Width Threshold [s] : 0.6
Baseline Plateau [s] : 0.5

Filter Settings

Filter Width [s] : 0.5
Polynomial Order : 4

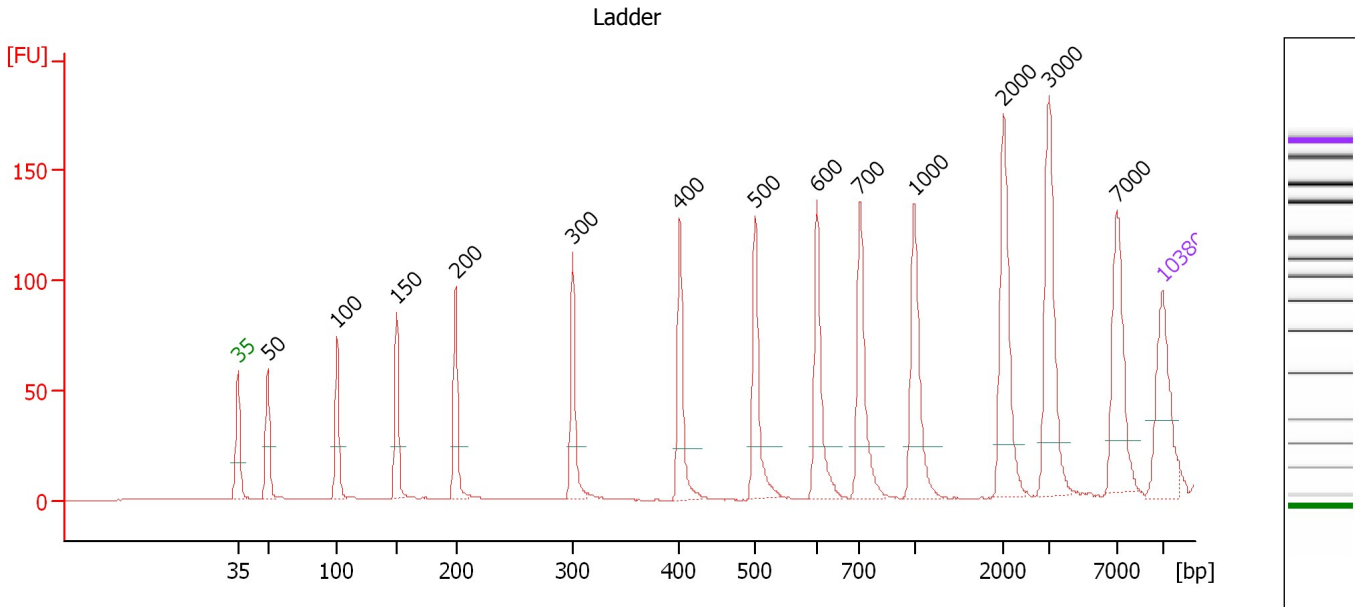
Ladder

Ladder Peak	Size	Area
1	35	160
2	50	210
3	100	208
4	150	221
5	200	242
6	300	270
7	400	305
8	500	306
9	600	336
10	700	321
11	1000	366
12	2000	413
13	3000	411
14	7000	400
15	10380	214

Assay Class: High Sensitivity DNA Assay
 Data Path: C:\...ents and Settings\Bioanalyzer\2014-01-24\2014-01-24_004.xad

Created: 1/24/2014 3:38:01 PM
 Modified: 1/24/2014 4:18:37 PM

Electropherogram Summary



Overall Results for Ladder

Noise: 0.2

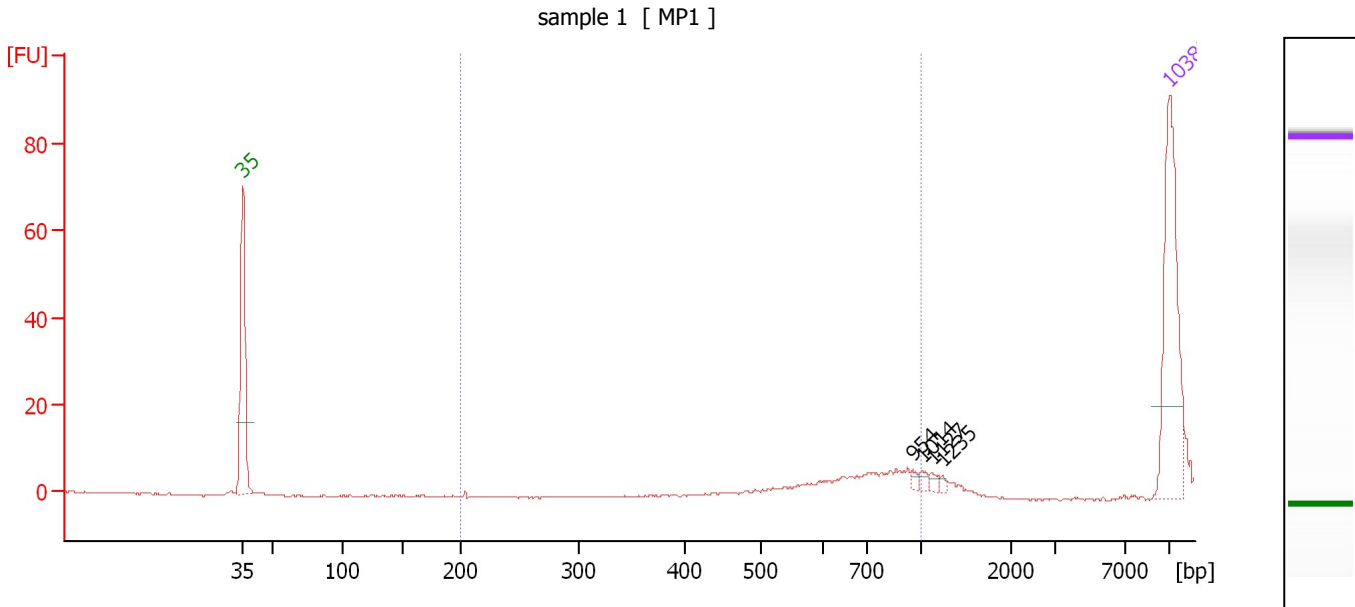
Peak table for Ladder

Peak	Aligned Migration Time [s]	Size [bp]	Conc. [pg/μl]	Molarity [pmol/l]	Observations
1	43.00	35	125.00	5,411.3	Lower Marker
2	45.22	50	150.00	4,545.5	Ladder Peak
3	50.51	100	150.00	2,272.7	Ladder Peak
4	55.00	150	150.00	1,515.2	Ladder Peak
5	59.48	200	150.00	1,136.4	Ladder Peak
6	68.33	300	150.00	757.6	Ladder Peak
7	76.44	400	150.00	568.2	Ladder Peak
8	82.18	500	150.00	454.5	Ladder Peak
9	86.83	600	150.00	378.8	Ladder Peak
10	90.10	700	150.00	324.7	Ladder Peak
11	94.22	1,000	150.00	227.3	Ladder Peak
12	100.96	2,000	150.00	113.6	Ladder Peak
13	104.40	3,000	150.00	75.8	Ladder Peak
14	109.57	7,000	150.00	32.5	Ladder Peak
15	113.00	10,380	75.00	10.9	Upper Marker

Assay Class: High Sensitivity DNA Assay
 Data Path: C:\...ents and Settings\Bioanalyzer\2014-01-24\2014-01-24_004.xad

Created: 1/24/2014 3:38:01 PM
 Modified: 1/24/2014 4:18:37 PM

Electropherogram Summary Continued ...



Setpoint Deviations for sample 1 : sample 1

Height Threshold [FU] : 3

Overall Results for sample 1 : sample 1

Number of peaks found: 4 Corr. Area 1: 0.0
 Noise: 0.2

Peak table for sample 1 : sample 1

Peak	Aligned Migration Time [s]	Size [bp]	Conc. [pg/μl]	Molarity [pmol/l]	Observations
1	43.00	35	125.00	5,411.3	Lower Marker
2	93.59	954	2.22	3.5	
3	94.31	1,014	3.03	4.5	
4	95.08	1,127	3.14	4.2	
5	95.80	1,235	1.80	2.2	
6	113.00	10,380	75.00	10.9	Upper Marker

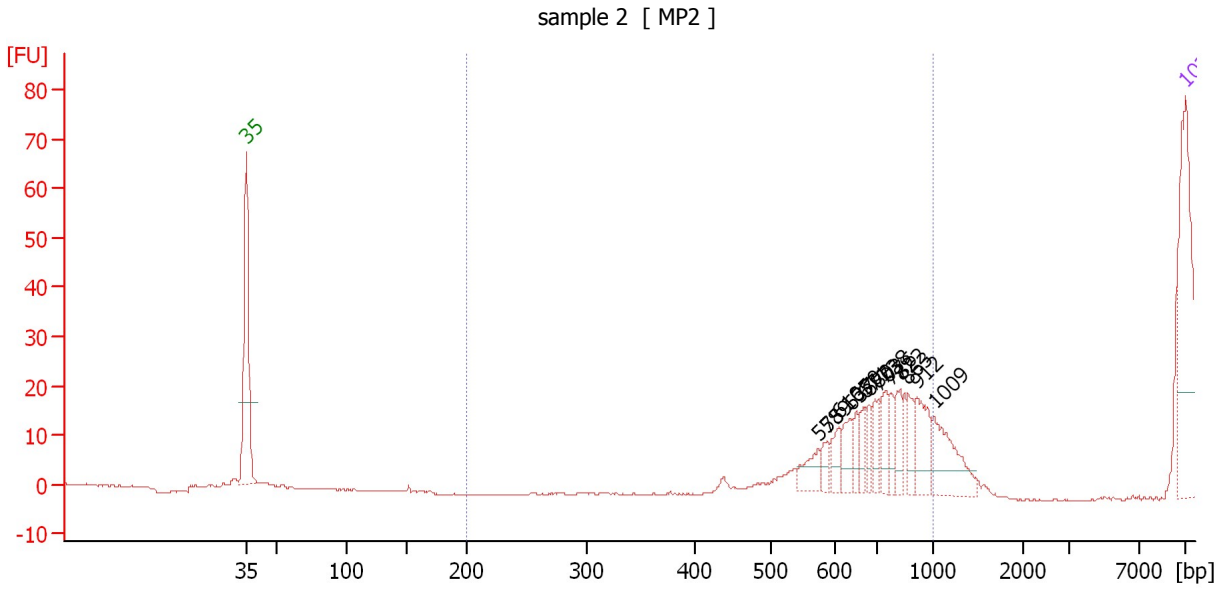
Region table for sample 1 : sample 1

From [bp]	To [bp]	Average Size [bp]	Molarity [pmol/l]	Conc. [pg/μl]	Corr. Area	% of Total	Size distribution in CV [%]	Color
200	1,000	0	0.0	0.00	0.0	0	0.0	Blue

Assay Class: High Sensitivity DNA Assay
 Data Path: C:\...ents and Settings\Bioanalyzer\2014-01-24\2014-01-24_004.xad

Created: 1/24/2014 3:38:01 PM
 Modified: 1/24/2014 4:18:37 PM

Electropherogram Summary Continued ...



Setpoint Deviations for sample 2 : sample 2

Width Threshold [s] : 0.3

Overall Results for sample 2 : sample 2

Number of peaks found: 14 Corr. Area 1: 0.0
 Noise: 0.1

Peak table for sample 2 : sample 2

Peak	Aligned Migration Time [s]	Size [bp]	Conc. [pg/μl]	Molarity [pmol/l]	Observations
1	43.00	35	125.00	5,411.3	Lower Marker
2	85.65	575	16.04	42.3	
3	86.33	589	8.12	20.9	
4	87.16	610	13.58	33.7	
5	88.04	637	16.33	38.8	
6	88.47	650	9.57	22.3	
7	89.15	671	10.28	23.2	
8	89.43	680	8.75	19.5	
9	90.14	703	12.30	26.5	
10	90.62	738	16.33	33.5	
11	91.14	776	11.70	22.9	
12	91.77	822	16.78	30.9	
13	92.33	863	12.83	22.5	
14	93.01	912	28.21	46.9	
15	94.28	1,009	38.87	58.4	
16	113.00	10,380	75.00	10.9	Upper Marker

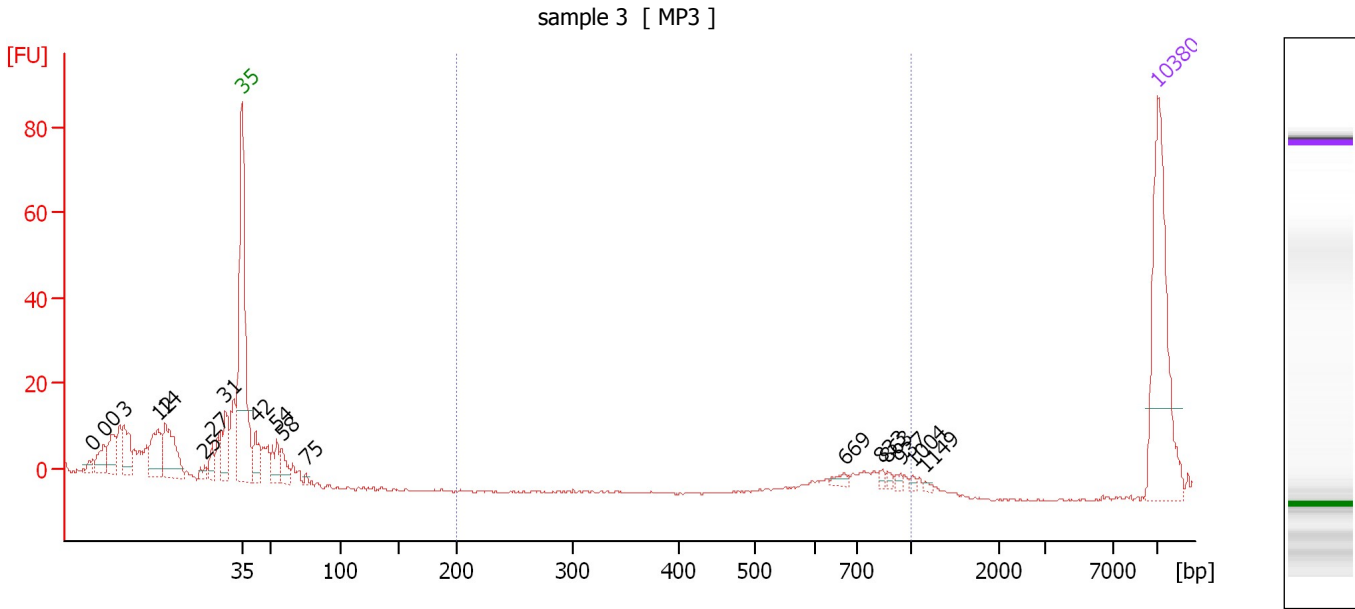
Region table for sample 2 : sample 2

From [bp]	To [bp]	Average Size [bp]	Molarity [pmol/l]	Conc. [pg/μl]	Corr. Area	% of Total	Size distribution in CV [%]	Color
200	1,000	0	0.0	0.00	0.0	0	0.0	Blue

Assay Class: High Sensitivity DNA Assay
 Data Path: C:\...ents and Settings\Bioanalyzer\2014-01-24\2014-01-24_004.xad

Created: 1/24/2014 3:38:01 PM
 Modified: 1/24/2014 4:18:37 PM

Electropherogram Summary Continued ...



Setpoint Deviations for sample 3 : sample 3

Height Threshold [FU] : 2

Overall Results for sample 3 : sample 3

Number of peaks found: 19 Corr. Area 1: 0.2
 Noise: 0.2

Peak table for sample 3 : sample 3


Peak	Aligned Migration Time [s]	Size [bp]	Conc. [pg/μl]	Molarity [pmol/l]	Observations
1	31.58	0	0.00	0.0	
2	32.44	0	0.00	0.0	
3	33.05	0	0.00	0.0	
4	33.99	3	0.00	0.0	
5	36.56	12	0.00	0.0	
6	37.13	14	0.00	0.0	
7	40.15	25	0.00	0.0	
8	40.72	27	0.00	0.0	
9	41.74	31	0.00	0.0	
10	43.00	35	125.00	5,411.3	Lower Marker
11	44.06	42	22.45	806.8	
12	45.65	54	19.51	546.8	
13	46.06	58	15.15	396.4	
14	47.89	75	2.38	47.9	
15	89.07	669	3.88	8.8	
16	91.92	833	2.19	4.0	
17	92.33	863	2.12	3.7	
18	93.35	937	2.02	3.3	
19	94.25	1,004	1.55	2.3	
20	95.22	1,149	1.30	1.7	
21	113.00	10,380	75.00	10.9	Upper Marker

Assay Class: High Sensitivity DNA Assay
Data Path: C:\...ents and Settings\Bioanalyzer\2014-01-24\2014-01-24_004.xad

Created: 1/24/2014 3:38:01 PM
Modified: 1/24/2014 4:18:37 PM

Electropherogram Summary Continued ...

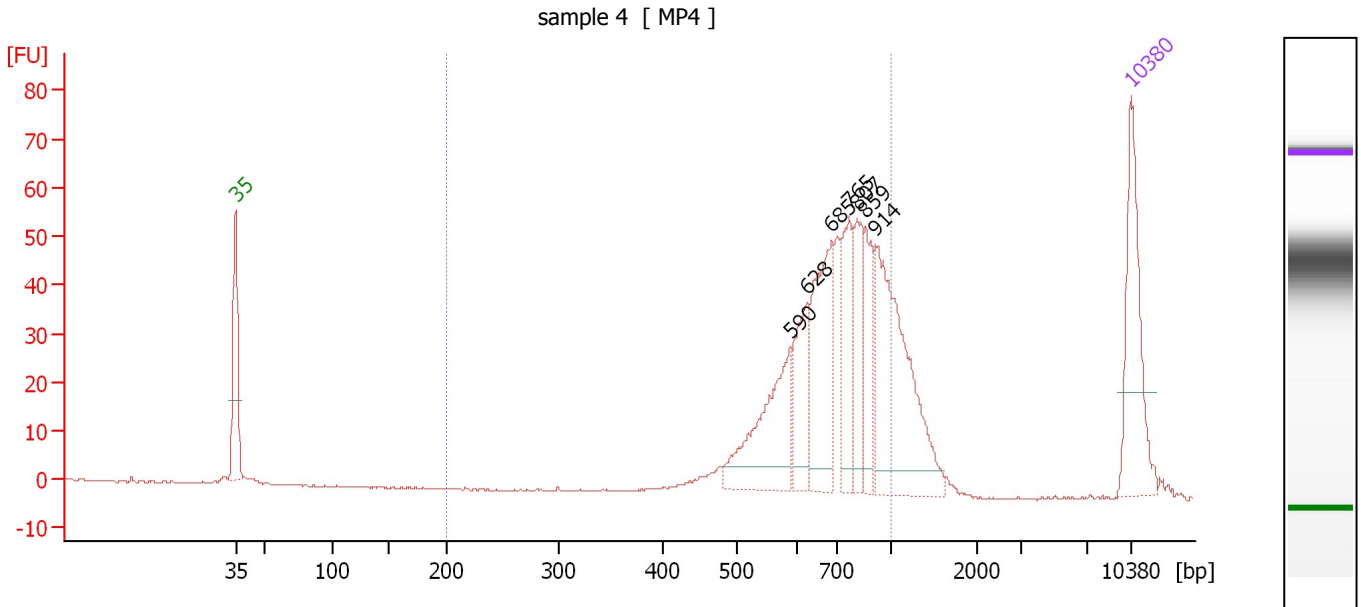
... Region table for sample 3 : sample 3

From [bp]	To [bp]	Average Size [bp]	Molarity [pmol/l]	Conc. [pg/ μ l]	Corr. Area	% of Total	Size distribution in CV [%]	Color
200	1,000	813	0.3	0.17	0.2	0	4.8	

Assay Class: High Sensitivity DNA Assay
 Data Path: C:\...ents and Settings\Bioanalyzer\2014-01-24\2014-01-24_004.xad

Created: 1/24/2014 3:38:01 PM
 Modified: 1/24/2014 4:18:37 PM

Electropherogram Summary Continued ...



Overall Results for sample 4 : sample 4

Number of peaks found: 7 Corr. Area 1: 538.6
 Noise: 0.2

Peak table for sample 4 : sample 4

Peak	Aligned Migration Time [s]	Size [bp]	Conc. [pg/μl]	Molarity [pmol/l]	Observations
1	43.00	35	125.00	5,411.3	Lower Marker
2	86.36	590	105.38	270.6	
3	87.73	628	59.93	144.6	
4	89.61	685	114.09	252.3	
5	90.99	765	61.99	122.8	
6	91.57	807	53.00	99.5	
7	92.28	859	48.74	86.0	
8	93.03	914	171.45	284.4	
9	113.00	10,380	75.00	10.9	Upper Marker

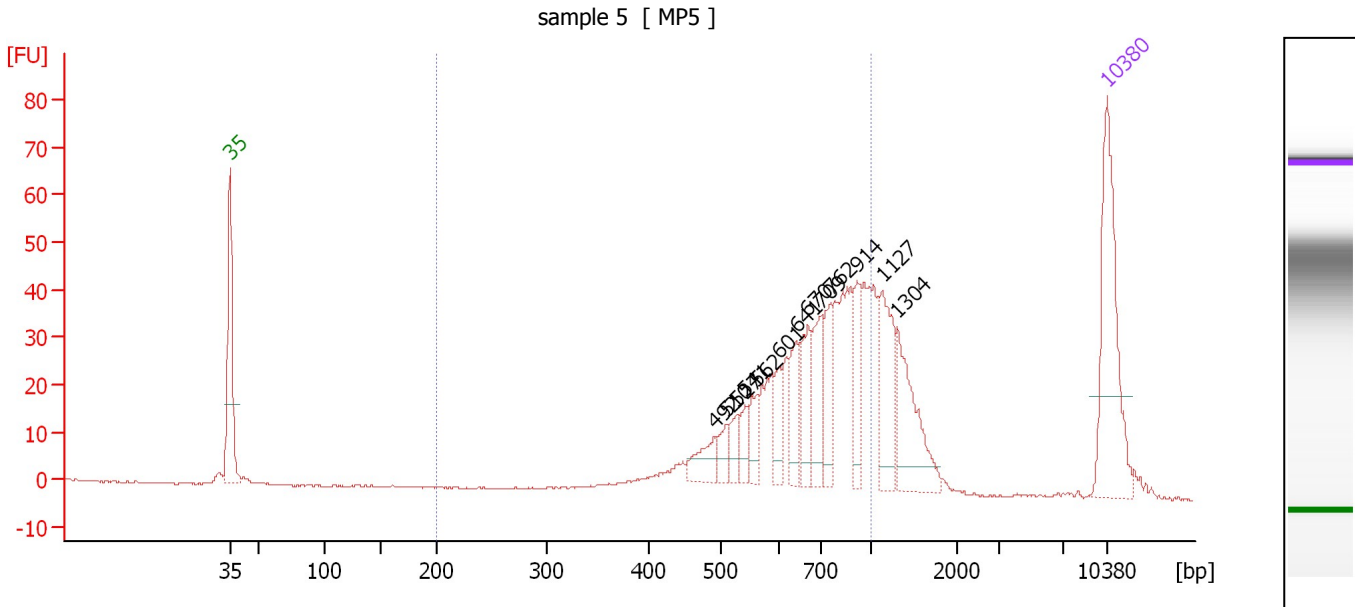
Region table for sample 4 : sample 4

From [bp]	To [bp]	Average Size [bp]	Molarity [pmol/l]	Conc. [pg/μl]	Corr. Area	% of Total	Size distribution in CV [%]	Color
200	1,000	715	1,307.1	587.71	538.6	82	19.6	Blue

Assay Class: High Sensitivity DNA Assay
 Data Path: C:\...ents and Settings\Bioanalyzer\2014-01-24\2014-01-24_004.xad

Created: 1/24/2014 3:38:01 PM
 Modified: 1/24/2014 4:18:37 PM

Electropherogram Summary Continued ...



Overall Results for sample 5 : sample 5

Number of peaks found: 13 Corr. Area 1: 471.7
 Noise: 0.2

Peak table for sample 5 : sample 5

Peak	Aligned Migration Time [s]	Size [bp]	Conc. [pg/μl]	Molarity [pmol/l]	Observations
1	43.00	35	125.00	5,411.3	Lower Marker
2	81.75	492	19.90	61.2	
3	82.64	510	12.26	36.4	
4	83.45	527	13.60	39.1	
5	84.09	541	12.70	35.6	
6	85.07	562	17.06	46.0	
7	86.86	601	18.20	45.9	
8	88.18	641	24.66	58.3	
9	89.11	670	30.38	68.7	
10	90.22	709	34.32	73.4	
11	90.94	762	29.28	58.3	
12	93.03	914	25.22	41.8	
13	95.07	1,127	49.31	66.3	
14	96.27	1,304	53.00	61.6	
15	113.00	10,380	75.00	10.9	Upper Marker

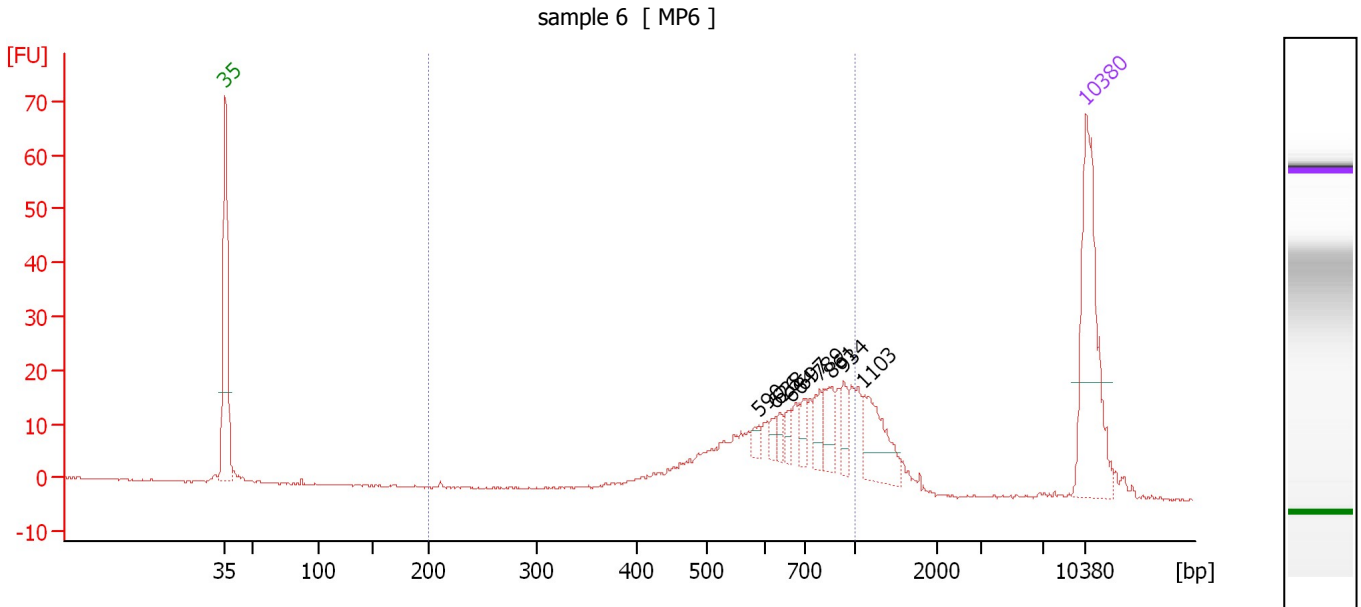
Region table for sample 5 : sample 5

From [bp]	To [bp]	Average Size [bp]	Molarity [pmol/l]	Conc. [pg/μl]	Corr. Area	% of Total	Size distribution in CV [%]	Color
200	1,000	694	1,055.1	449.25	471.7	74	23.0	Blue

Assay Class: High Sensitivity DNA Assay
 Data Path: C:\...ents and Settings\Bioanalyzer\2014-01-24\2014-01-24_004.xad

Created: 1/24/2014 3:38:01 PM
 Modified: 1/24/2014 4:18:37 PM

Electropherogram Summary Continued ...



Overall Results for sample 6 : sample 6

Number of peaks found: 9 Corr. Area 1: 232.7
 Noise: 0.1

Peak table for sample 6 : sample 6

Peak	Aligned Migration Time [s]	Size [bp]	Conc. [pg/μl]	Molarity [pmol/l]	Observations
1	43.00	35	125.00	5,411.3	Lower Marker
2	86.37	590	5.15	13.2	
3	87.67	626	5.25	12.7	
4	88.06	638	5.86	13.9	
5	88.93	664	6.51	14.9	
6	90.01	697	8.92	19.4	
7	91.31	789	11.79	22.6	
8	92.31	861	17.57	30.9	
9	93.31	934	11.31	18.3	
10	94.91	1,103	34.17	46.9	
11	113.00	10,380	75.00	10.9	Upper Marker

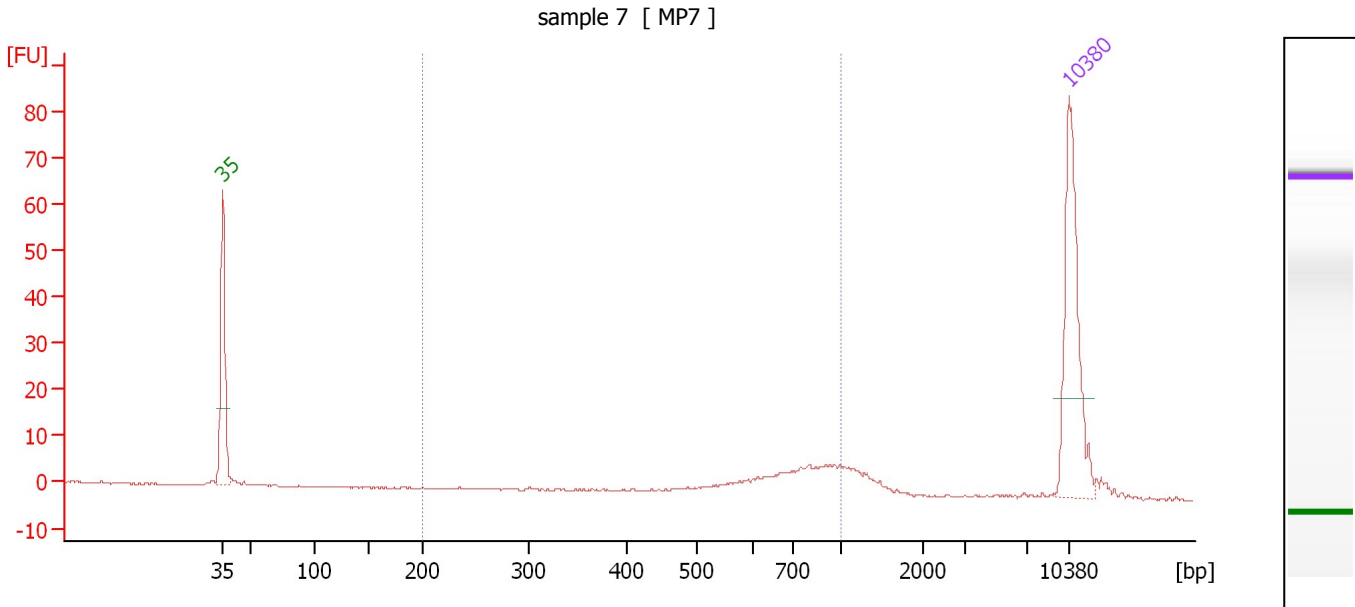
Region table for sample 6 : sample 6

From [bp]	To [bp]	Average Size [bp]	Molarity [pmol/l]	Conc. [pg/μl]	Corr. Area	% of Total	Size distribution in CV [%]	Color
200	1,000	680	584.6	242.58	232.7	75	23.8	Blue

Assay Class: High Sensitivity DNA Assay
 Data Path: C:\...ents and Settings\Bioanalyzer\2014-01-24\2014-01-24_004.xad

Created: 1/24/2014 3:38:01 PM
 Modified: 1/24/2014 4:18:37 PM

Electropherogram Summary Continued ...



Overall Results for sample 7 : sample 7

Number of peaks found: 0 Corr. Area 1: 54.8
 Noise: 0.2

Peak table for sample 7 : sample 7

Peak	Aligned Migration Time [s]	Size [bp]	Conc. [pg/μl]	Molarity [pmol/l]	Observations
1	43.00	35	125.00	5,411.3	Lower Marker
2	113.00	10,380	75.00	10.9	Upper Marker

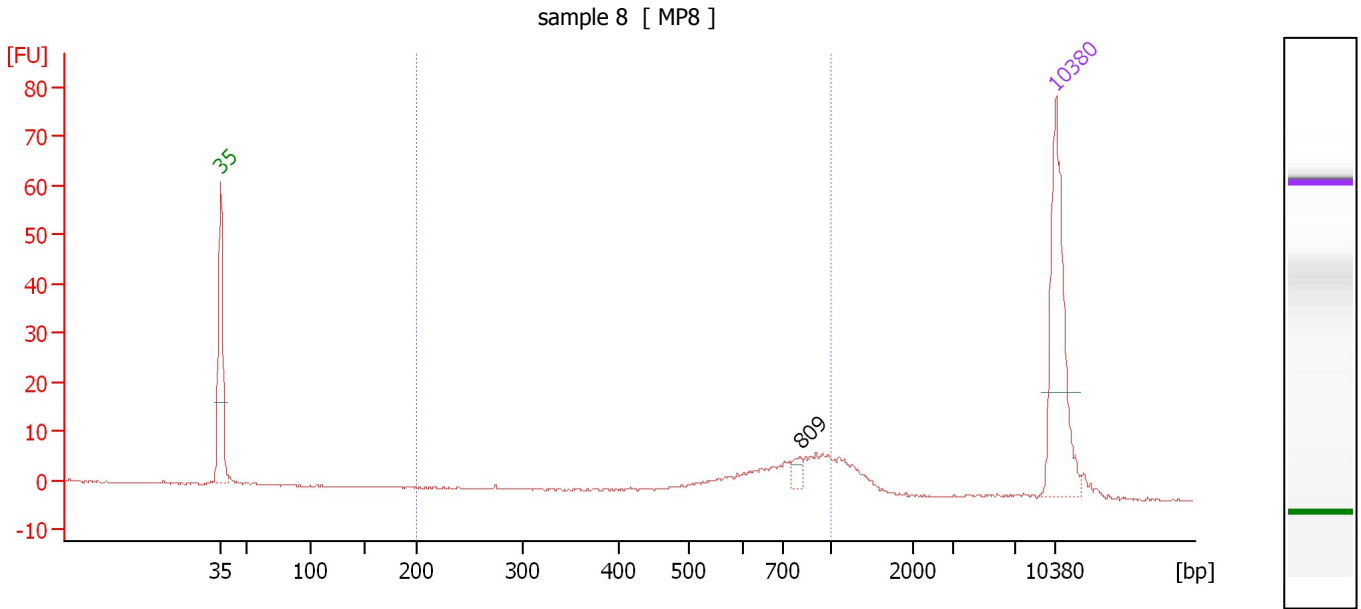
Region table for sample 7 : sample 7

From [bp]	To [bp]	Average Size [bp]	Molarity [pmol/l]	Conc. [pg/μl]	Corr. Area	% of Total	Size distribution in CV [%]	Color
200	1,000	722	121.8	53.98	54.8	64	21.6	Blue

Assay Class: High Sensitivity DNA Assay
 Data Path: C:\...ents and Settings\Bioanalyzer\2014-01-24\2014-01-24_004.xad

Created: 1/24/2014 3:38:01 PM
 Modified: 1/24/2014 4:18:37 PM

Electropherogram Summary Continued ...



Overall Results for sample 8 : sample 8

Number of peaks found: 1 Corr. Area 1: 70.5
 Noise: 0.1

Peak table for sample 8 : sample 8

Peak	Aligned Migration Time [s]	Size [bp]	Conc. [pg/μl]	Molarity [pmol/l]	Observations
1	43.00	35	125.00	5,411.3	Lower Marker
2	91.59	809	6.64	12.4	
3	113.00	10,380	75.00	10.9	Upper Marker

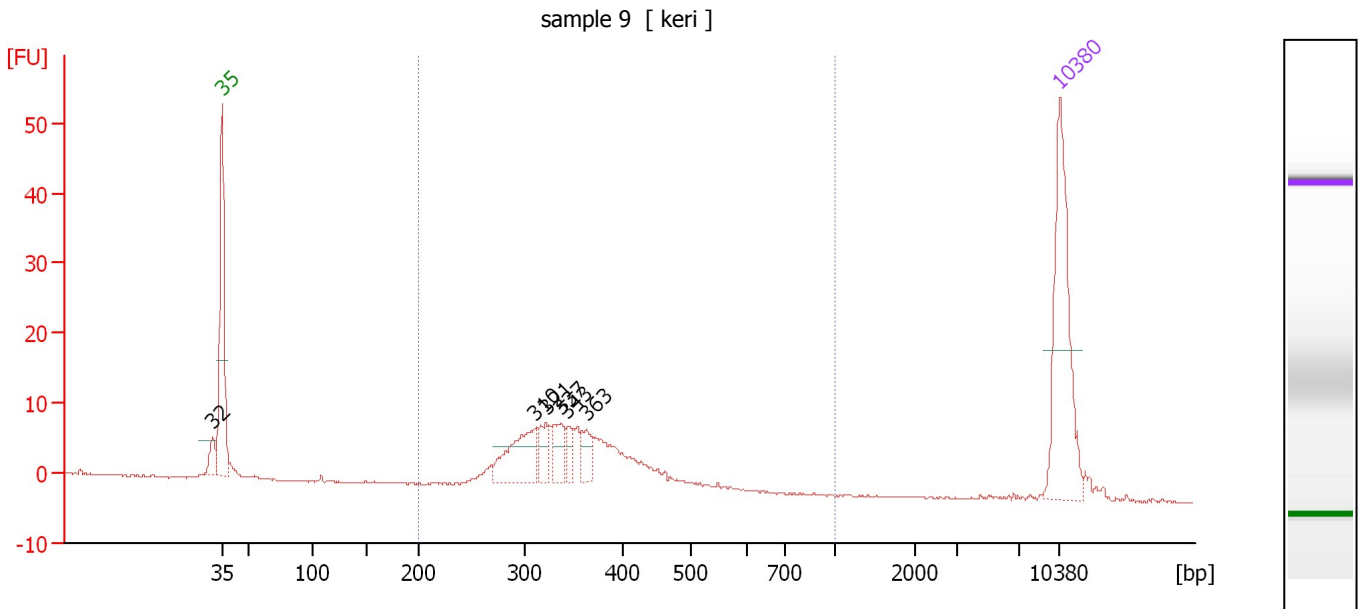
Region table for sample 8 : sample 8

From [bp]	To [bp]	Average Size [bp]	Molarity [pmol/l]	Conc. [pg/μl]	Corr. Area	% of Total	Size distribution in CV [%]	Color
200	1,000	718	168.7	74.17	70.5	67	22.0	Blue

Assay Class: High Sensitivity DNA Assay
 Data Path: C:\...ents and Settings\Bioanalyzer\2014-01-24\2014-01-24_004.xad

Created: 1/24/2014 3:38:01 PM
 Modified: 1/24/2014 4:18:37 PM

Electropherogram Summary Continued ...



Overall Results for sample 9 : sample 9

Number of peaks found: 6 Corr. Area 1: 134.8
 Noise: 0.1

Peak table for sample 9 : sample 9

Peak	Aligned Migration Time [s]	Size [bp]	Conc. [pg/μl]	Molarity [pmol/l]	Observations
1	42.20	32	0.00	0.0	
2	43.00	35	125.00	5,411.3	Lower Marker
3	69.11	310	50.41	246.7	
4	70.05	321	18.02	85.0	
5	71.34	337	18.27	82.1	
6	71.83	343	10.15	44.8	
7	73.43	363	14.12	58.9	
8	113.00	10,380	75.00	10.9	Upper Marker

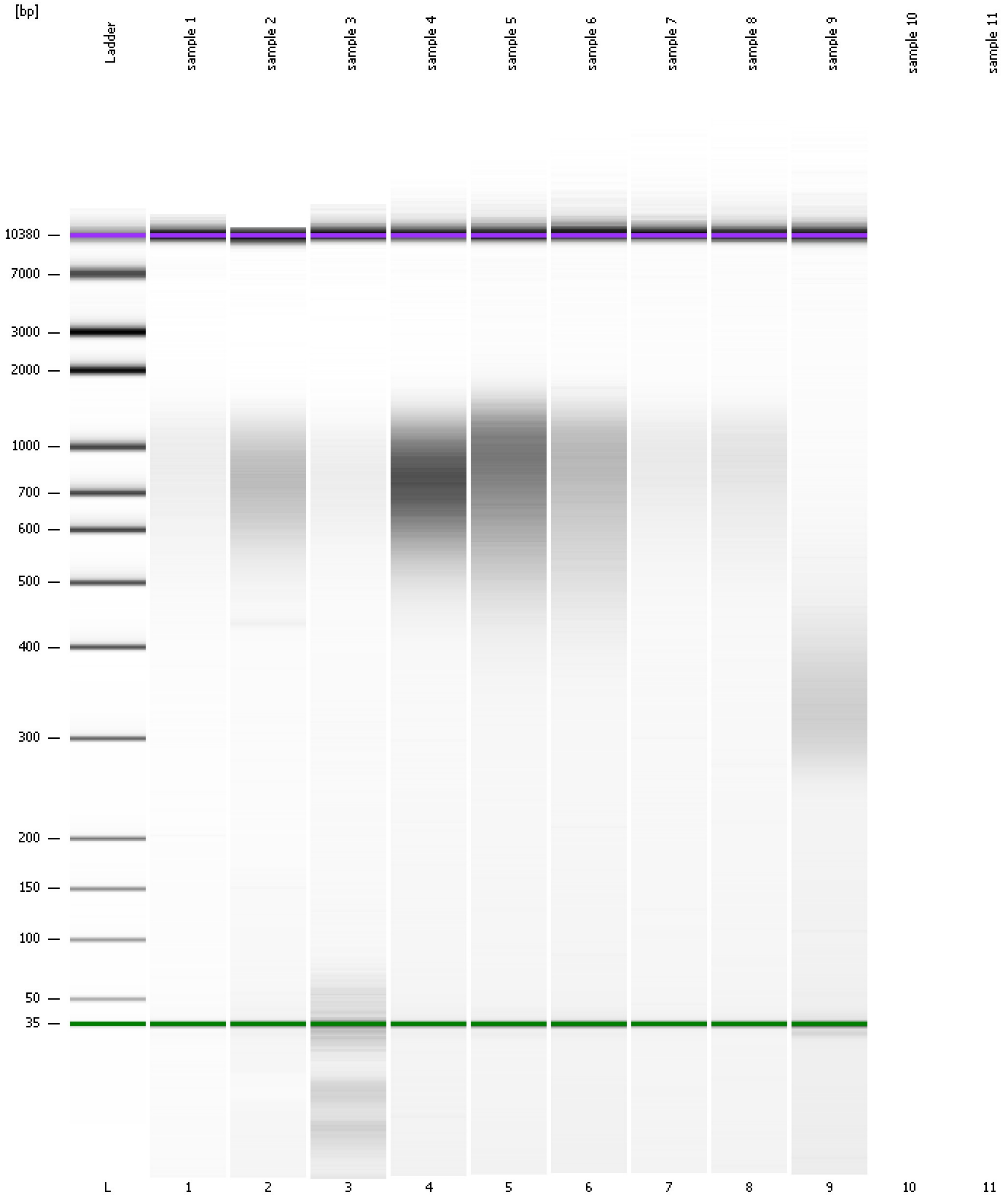
Region table for sample 9 : sample 9

From [bp]	To [bp]	Average Size [bp]	Molarity [pmol/l]	Conc. [pg/μl]	Corr. Area	% of Total	Size distribution in CV [%]	Color
200	1,000	354	948.7	214.43	134.8	89	16.8	Blue

Assay Class: High Sensitivity DNA Assay
Data Path: C:\...ents and Settings\Bioanalyzer\2014-01-24\2014-01-24_004.xad

Created: 1/24/2014 3:38:01 PM
Modified: 1/24/2014 4:18:37 PM

Gel Image



Assay Class: High Sensitivity DNA Assay
Data Path: C:\...ents and Settings\Bioanalyzer\2014-01-24\2014-01-24_004.xad

Created: 1/24/2014 3:38:01 PM
Modified: 1/24/2014 4:18:37 PM

Invalid Samples

Sample 10 has not been run, no results available.

Sample 11 has not been run, no results available.