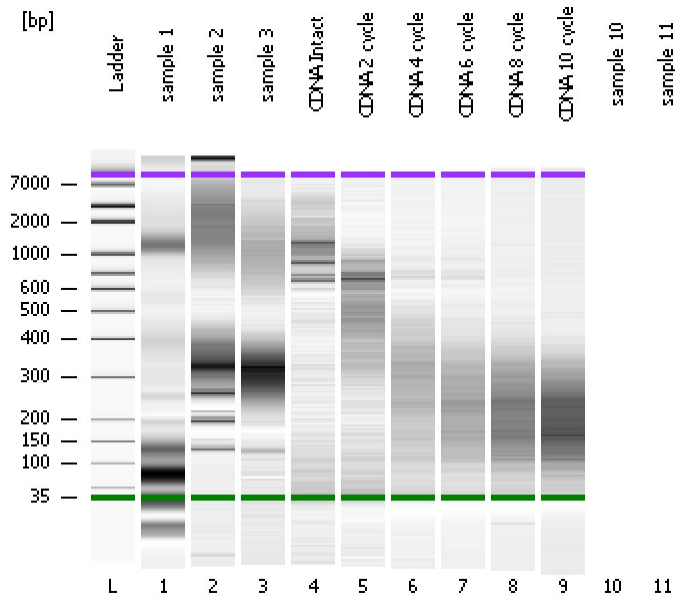


Assay Class: High Sensitivity DNA Assay
Data Path: C:\...ents and Settings\Bioanalyzer\2014-01-24\2014-01-24_005.xad

Created: 1/24/2014 4:35:58 PM
Modified: 1/24/2014 5:49:12 PM

Electrophoresis File Run Summary



Instrument Information:

Instrument Name: DE13701086 Firmware: C.01.069
Serial#: DE13701086 Type: G2938B

Assay Information:

Assay Origin Path: C:\Program Files\Agilent\2100 bioanalyzer\2100 expert\assays\dsDNA\High Sensitivity DNA.xsy
Assay Class: High Sensitivity DNA Assay
Version: 1.03
Assay Comments: Copyright © 2003-2010 Agilent Technologies

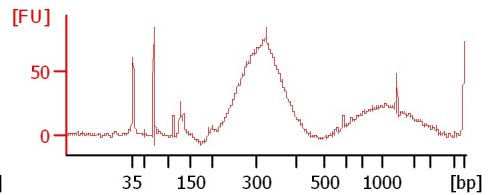
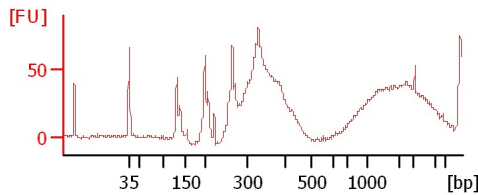
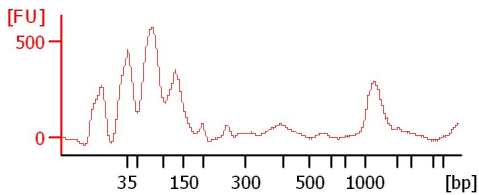
Chip Information:

Chip Lot #:
Reagent Kit Lot #:
Chip Comments:

sample 1

sample 2

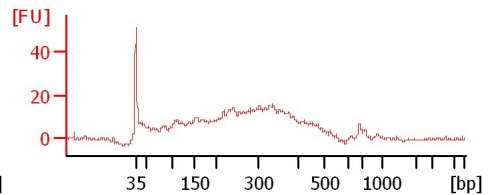
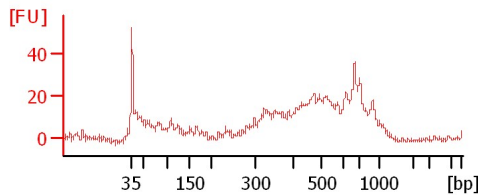
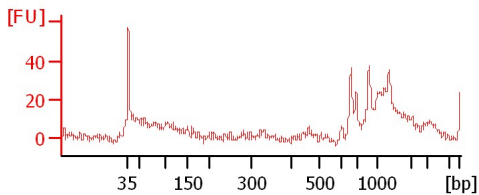
sample 3



CDNA Intact

CDNA 2 cycle

CDNA 4 cycle



CDNA 6 cycle

CDNA 8 cycle

CDNA 10 cycle

Assay Class: High Sensitivity DNA Assay
Data Path: C:\...ents and Settings\Bioanalyzer\2014-01-24\2014-01-24_005.xad

Created: 1/24/2014 4:35:58 PM
Modified: 1/24/2014 5:49:12 PM

Electrophoresis File Run Summary (Chip Summary)

Sample Name	Sample Comment	Rest. Digest	Status	Observation	Result Label	Result Color
sample 1		<input type="checkbox"/>	✓			
sample 2		<input type="checkbox"/>	✓			
sample 3		<input type="checkbox"/>	✓			
CDNA Intact		<input type="checkbox"/>	✓			
CDNA 2 cycle		<input type="checkbox"/>	✓			
CDNA 4 cycle		<input type="checkbox"/>	✓			
CDNA 6 cycle		<input type="checkbox"/>	✓			
CDNA 8 cycle		<input type="checkbox"/>	✓			
CDNA 10 cycle		<input type="checkbox"/>	✓			
sample 10		<input type="checkbox"/>				
sample 11		<input type="checkbox"/>				
Ladder		<input type="checkbox"/>	✓			

Chip Lot #

Reagent Kit Lot #

Chip Comments :

Assay Class: High Sensitivity DNA Assay
Data Path: C:\...ents and Settings\Bioanalyzer\2014-01-24\2014-01-24_005.xad

Created: 1/24/2014 4:35:58 PM
Modified: 1/24/2014 5:49:12 PM

Electrophoresis Assay Details

General Analysis Settings

Number of Available Sample and Ladder Wells (Max.) : 12
Minimum Visible Range [s] : 32
Maximum Visible Range [s] : 138
Start Analysis Time Range [s] : 33
End Analysis Time Range [s] : 137.5
Ladder Concentration [pg/μl] : 1950
Uses Standard Area for Ladder Fragments
Lower Marker Concentration [pg/μl] : 125
Upper Marker Concentration [pg/μl] : 75
Used Upper Marker for Quantitation
Standard Curve Fit is Point to Point
Show Data Aligned to Lower and Upper Marker

Integrator Settings

Integration Start Time [s] : 33.05
Integration End Time [s] : 137
Slope Threshold : 0.8
Height Threshold [FU] : 5
Area Threshold : 0.1
Width Threshold [s] : 0.6
Baseline Plateau [s] : 0.5

Filter Settings

Filter Width [s] : 0.5
Polynomial Order : 4

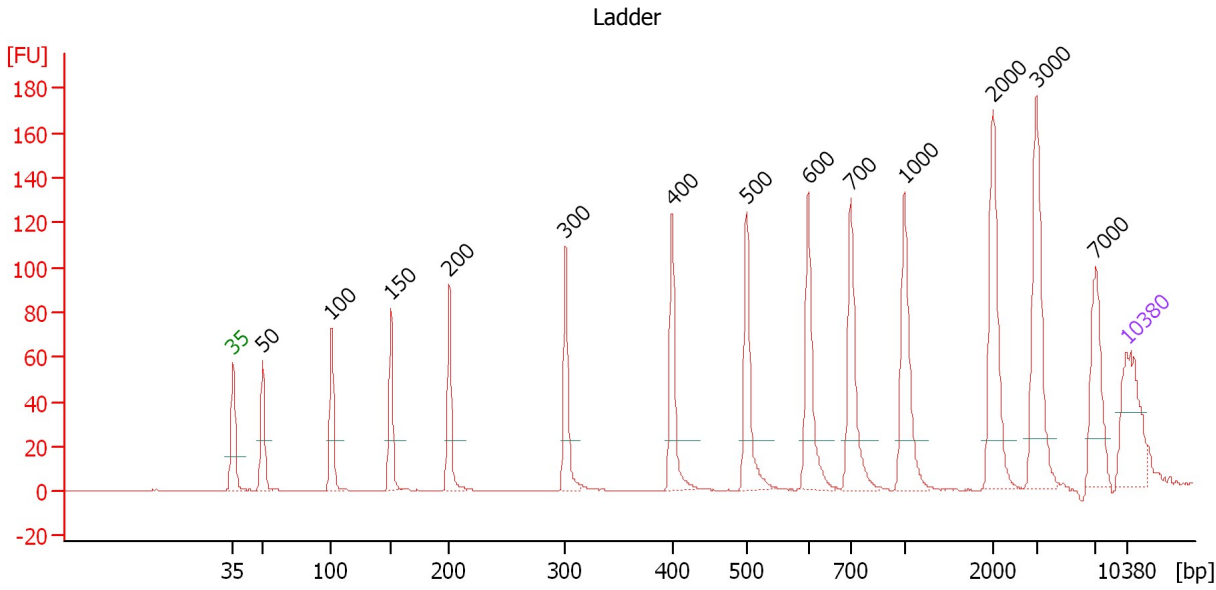
Ladder

Ladder Peak	Size	Area
1	35	160
2	50	210
3	100	208
4	150	221
5	200	242
6	300	270
7	400	305
8	500	306
9	600	336
10	700	321
11	1000	366
12	2000	413
13	3000	411
14	7000	400
15	10380	214

Assay Class: High Sensitivity DNA Assay
 Data Path: C:\...ents and Settings\Bioanalyzer\2014-01-24\2014-01-24_005.xad

Created: 1/24/2014 4:35:58 PM
 Modified: 1/24/2014 5:49:12 PM

Electropherogram Summary



Overall Results for Ladder

Noise: 0.2

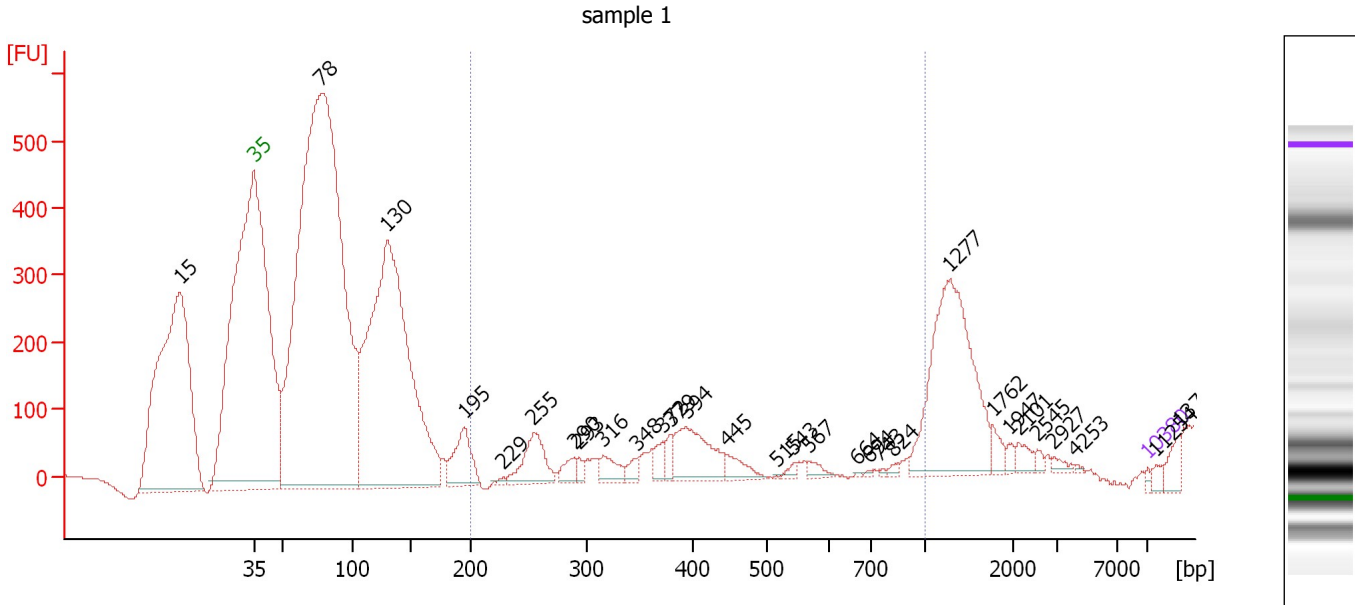
Peak table for Ladder

Peak	Aligned Migration Time [s]	Size [bp]	Conc. [pg/μl]	Molarity [pmol/l]	Observations
1	43.00	35	125.00	5,411.3	Lower Marker
2	45.30	50	150.00	4,545.5	Ladder Peak
3	50.68	100	150.00	2,272.7	Ladder Peak
4	55.32	150	150.00	1,515.2	Ladder Peak
5	59.92	200	150.00	1,136.4	Ladder Peak
6	69.02	300	150.00	757.6	Ladder Peak
7	77.37	400	150.00	568.2	Ladder Peak
8	83.22	500	150.00	454.5	Ladder Peak
9	88.02	600	150.00	378.8	Ladder Peak
10	91.37	700	150.00	324.7	Ladder Peak
11	95.54	1,000	150.00	227.3	Ladder Peak
12	102.52	2,000	150.00	113.6	Ladder Peak
13	105.90	3,000	150.00	75.8	Ladder Peak
14	110.58	7,000	150.00	32.5	Ladder Peak
15	113.00	10,380	75.00	10.9	Upper Marker

Assay Class: High Sensitivity DNA Assay
 Data Path: C:\...ents and Settings\Bioanalyzer\2014-01-24\2014-01-24_005.xad

Created: 1/24/2014 4:35:58 PM
 Modified: 1/24/2014 5:49:12 PM

Electropherogram Summary Continued ...



Overall Results for sample 1 : sample 1

Number of peaks found: 30 Corr. Area 1: 172.9
 Noise: 0.3

Peak table for sample 1 : sample 1

Peak	Aligned Migration Time [s]	Size [bp]	Conc. [pg/μl]	Molarity [pmol/l]	Observations
1	37.20	15	0.00	0.0	
2	43.00	35	125.00	5,411.3	Lower Marker
3	48.30	78	46,425.75	903,237.1	
4	53.48	130	23,284.58	271,146.6	
5	59.49	195	1,887.35	14,638.6	
6	62.53	229	104.27	690.6	
7	64.91	255	1,779.70	10,578.6	
8	68.09	290	471.42	2,465.2	
9	68.42	293	268.26	1,385.3	
10	70.38	316	640.79	3,069.5	
11	73.01	348	299.16	1,303.3	
12	75.02	372	420.93	1,715.5	
13	75.64	379	402.87	1,609.4	
14	76.85	394	2,127.90	8,188.0	
15	79.98	445	534.39	1,821.1	
16	83.95	515	14.75	43.4	
17	85.28	543	132.43	369.5	
18	86.45	567	229.45	612.8	
19	90.17	664	26.45	60.3	
20	91.17	694	38.44	83.9	
21	91.96	743	45.15	92.1	
22	93.09	824	90.82	167.0	
23	97.47	1,277	5,822.86	6,910.0	
24	100.85	1,762	328.19	282.3	
25	102.15	1,947	141.06	109.8	

Assay Class: High Sensitivity DNA Assay
 Data Path: C:\...ents and Settings\Bioanalyzer\2014-01-24\2014-01-24_005.xad


Created: 1/24/2014 4:35:58 PM
 Modified: 1/24/2014 5:49:12 PM

Electropherogram Summary Continued ...

... Peak table for sample 1 : sample 1

Peak	Aligned Migration Time [s]	Size [bp]	Conc. [pg/ μ l]	Molarity [pmol/l]	Observations
26	102.86	2,101	270.69	195.2	
27	104.36	2,545	104.52	62.2	
28	105.65	2,927	128.66	66.6	
29	107.36	4,253	25.87	9.2	
30	113.00	10,380	75.00	10.9	Upper Marker
31	113.63	11,254	0.00	0.0	
32	115.38	13,700	0.00	0.0	

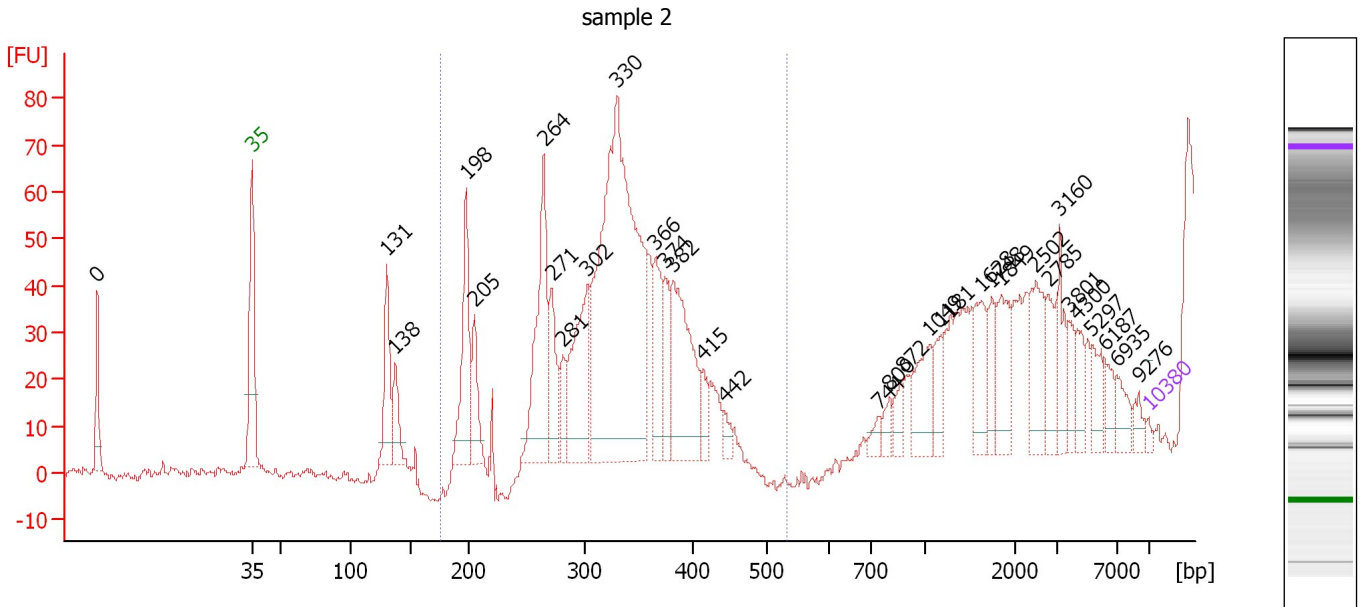
Region table for sample 1 : sample 1

From [bp]	To [bp]	Average Size [bp]	Molarity [pmol/l]	Conc. [pg/ μ l]	Corr. Area	% of Total	Size distribution in CV [%]	Color
200	1,000	405	5,226.1	1,148.05	172.9	2	48.1	

Assay Class: High Sensitivity DNA Assay
 Data Path: C:\...ents and Settings\Bioanalyzer\2014-01-24\2014-01-24_005.xad

Created: 1/24/2014 4:35:58 PM
 Modified: 1/24/2014 5:49:12 PM

Electropherogram Summary Continued ...



Overall Results for sample 2 : **sample 2**

Number of peaks found: 32 Corr. Area 1: 193.5
 Noise: 1.2

Peak table for sample 2 : **sample 2**


Peak	Aligned Migration Time [s]	Size [bp]	Conc. [pg/μl]	Molarity [pmol/l]	Observations
1	30.88	0	0.00	0.0	
2	43.00	35	125.00	5,411.3	Lower Marker
3	53.54	131	1,939.90	22,481.2	
4	54.20	138	1,052.89	11,566.1	
5	59.74	198	2,795.42	21,381.3	
6	60.36	205	1,263.81	9,343.7	
7	65.78	264	3,890.87	22,297.4	
8	66.40	271	1,458.44	8,146.5	
9	67.28	281	736.59	3,973.7	
10	69.19	302	3,073.21	15,415.1	
11	71.52	330	13,344.01	61,270.7	
12	74.52	366	1,657.71	6,864.9	
13	75.23	374	1,031.30	4,174.1	
14	75.90	382	3,341.08	13,240.7	
15	78.27	415	495.11	1,806.1	
16	79.85	442	258.46	885.2	
17	91.97	744	266.41	542.9	
18	92.76	800	285.86	541.2	
19	93.76	872	363.26	631.1	
20	95.89	1,049	1,132.42	1,635.3	
21	96.80	1,181	600.50	770.7	
22	99.92	1,628	898.94	836.5	
23	100.76	1,748	518.00	449.1	
24	101.47	1,849	1,056.94	866.0	
25	104.21	2,502	1,124.67	681.2	

Assay Class: High Sensitivity DNA Assay
 Data Path: C:\...ents and Settings\Bioanalyzer\2014-01-24\2014-01-24_005.xad


Created: 1/24/2014 4:35:58 PM
 Modified: 1/24/2014 5:49:12 PM

Electropherogram Summary Continued ...

... Peak table for sample 2 : sample 2

Peak	Aligned Migration Time [s]	Size [bp]	Conc. [pg/ μ l]	Molarity [pmol/l]	Observations
26	105.17	2,785	692.03	376.5	
27	106.09	3,160	714.50	342.5	
28	106.84	3,801	462.94	184.5	
29	107.42	4,300	452.33	159.4	
30	108.59	5,297	534.14	152.8	
31	109.63	6,187	372.78	91.3	
32	110.50	6,935	430.79	94.1	
33	112.21	9,276	232.26	37.9	
34	 113.00	10,380	75.00	10.9	Upper Marker

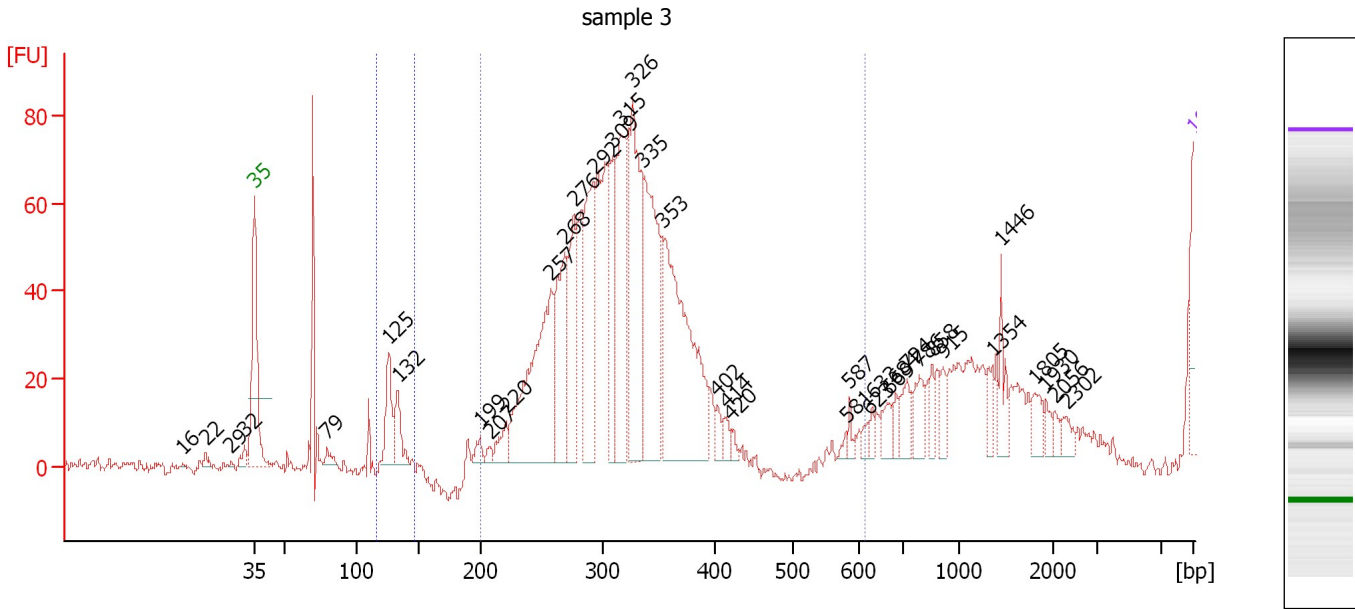
Region table for sample 2 : sample 2

From [bp]	To [bp]	Average Size [bp]	Molarity [pmol/l]	Conc. [pg/ μ l]	Corr. Area	% of Total	Size distribution in CV [%]	Color
177	531	311	39,441.0	7,708.68	193.5	82	14.7	

Assay Class: High Sensitivity DNA Assay
Data Path: C:\...ents and Settings\Bioanalyzer\2014-01-24\2014-01-24_005.xad

Created: 1/24/2014 4:35:58 PM
Modified: 1/24/2014 5:49:12 PM

Electropherogram Summary Continued ...



Setpoint Deviations for sample 3 : sample 3

Height Threshold [FU] : 0

Overall Results for sample 3 : sample 3

Number of peaks found: 38 Corr. Area 1: 728.5
Noise: 1.5 Corr. Area 2: 16.2

Peak table for sample 3 : sample 3

Peak	Aligned Migration Time [s]	Size [bp]	Conc. [pg/μl]	Molarity [pmol/l]	Observations
1	37.63	16	0.00	0.0	
2	39.38	22	0.00	0.0	
3	41.29	29	0.00	0.0	
4	42.28	32	0.00	0.0	
5	43.00	35	125.00	5,411.3	Lower Marker
6	48.41	79	10.72	205.9	
7	53.02	125	60.64	734.2	
8	53.69	132	41.65	476.5	
9	59.85	199	11.83	89.9	
10	60.57	207	6.86	50.1	
11	61.76	220	26.48	182.2	
12	65.10	257	253.91	1,497.2	
13	66.13	268	130.72	738.2	
14	66.85	276	108.82	597.0	
15	68.32	292	159.00	824.1	
16	69.75	309	108.92	534.5	
17	70.31	315	154.01	739.8	
18	71.22	326	188.77	876.4	
19	71.98	335	224.16	1,012.6	
20	73.41	353	297.25	1,277.5	
21	77.50	402	13.08	49.3	
22	78.22	414	12.25	44.8	

Assay Class: High Sensitivity DNA Assay
 Data Path: C:\...ents and Settings\Bioanalyzer\2014-01-24\2014-01-24_005.xad



Created: 1/24/2014 4:35:58 PM
 Modified: 1/24/2014 5:49:12 PM

Electropherogram Summary Continued ...

... Peak table for sample 3 : sample 3

Peak	Aligned Migration Time [s]	Size [bp]	Conc. [pg/μl]	Molarity [pmol/l]	Observations
23	78.54	420	6.73	24.3	
24	87.12	581	3.67	9.6	
25	87.40	587	9.50	24.5	
26	88.79	623	7.02	17.1	
27	89.11	633	9.30	22.3	
28	90.34	669	19.40	43.9	
29	90.82	684	12.97	28.7	
30	91.69	724	25.80	54.0	
31	92.57	786	28.19	54.3	
32	93.56	858	16.36	28.9	
33	94.36	915	16.32	27.0	
34	98.01	1,354	15.91	17.8	
35	98.65	1,446	25.51	26.7	
36	101.15	1,805	16.86	14.2	
37	102.03	1,930	8.20	6.4	
38	102.70	2,056	6.90	5.1	
39	103.54	2,302	10.61	7.0	
40	113.00	10,380	75.00	10.9	Upper Marker

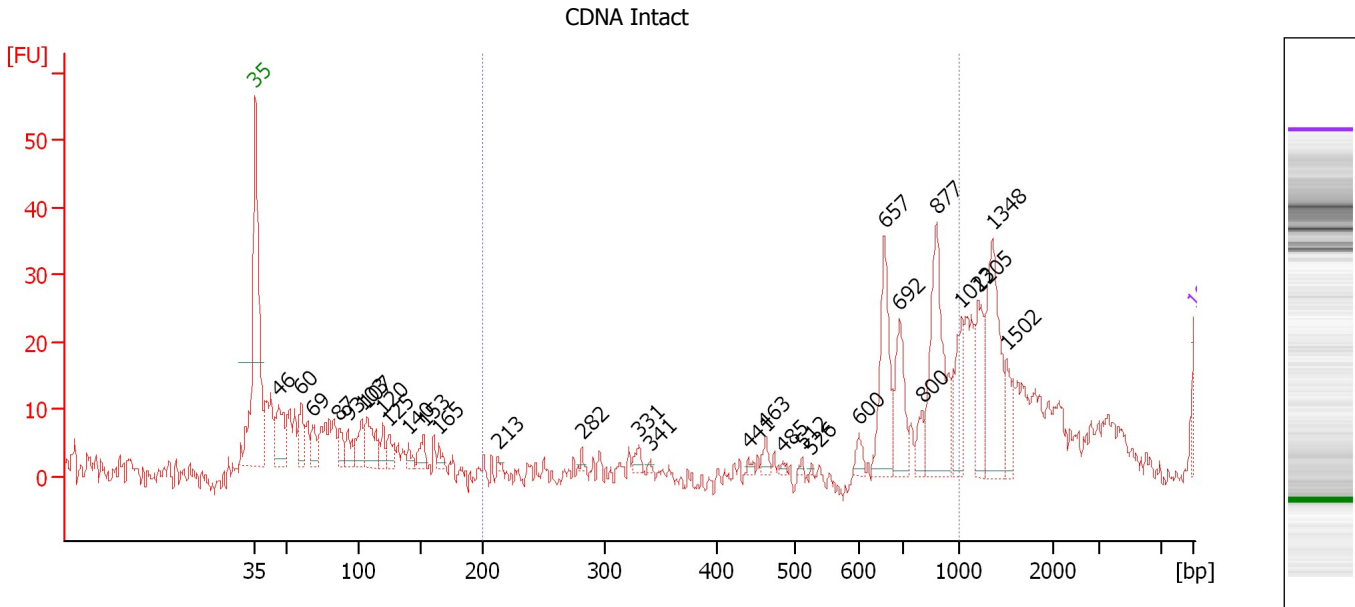
Region table for sample 3 : sample 3

From [bp]	To [bp]	Average Size [bp]	Molarity [pmol/l]	Conc. [pg/μl]	Corr. Area	% of Total	Size distribution in CV [%]	Color
116	145	127	463.6	38.98	16.2	2	2.6	
200	613	311	6,817.2	1,376.05	728.5	94	11.2	

Assay Class: High Sensitivity DNA Assay
 Data Path: C:\...ents and Settings\Bioanalyzer\2014-01-24\2014-01-24_005.xad

Created: 1/24/2014 4:35:58 PM
 Modified: 1/24/2014 5:49:12 PM

Electropherogram Summary Continued ...



Setpoint Deviations for sample 4 : CDNA Intact

Height Threshold [FU] : 1

Overall Results for sample 4 : CDNA Intact

Number of peaks found: 30 Corr. Area 1: 108.9
 Noise: 1.9

Peak table for sample 4 : CDNA Intact

Peak	Aligned Migration Time [s]	Size [bp]	Conc. [pg/μl]	Molarity [pmol/l]	Observations
1	43.00	35	125.00	5,411.3	Lower Marker
2	44.75	46	1,281.05	41,806.9	
3	46.42	60	707.31	17,735.8	
4	47.30	69	513.26	11,345.3	
5	49.28	87	427.83	7,450.9	
6	49.92	93	446.05	7,274.4	
7	50.95	103	599.40	8,825.2	
8	51.35	107	1,002.13	14,164.4	
9	52.51	120	362.37	4,589.3	
10	52.98	125	416.75	5,060.2	
11	54.41	140	191.60	2,070.3	
12	55.57	153	349.67	3,469.7	
13	56.68	165	190.48	1,751.1	
14	61.10	213	67.28	478.7	
15	67.38	282	81.96	440.4	
16	71.64	331	173.10	791.6	
17	72.47	341	45.58	202.3	
18	79.75	441	74.31	255.5	
19	81.06	463	192.28	629.1	
20	82.34	485	62.63	195.7	
21	83.81	512	48.48	143.4	
22	84.48	526	20.76	59.8	

Assay Class: High Sensitivity DNA Assay
 Data Path: C:\...ents and Settings\Bioanalyzer\2014-01-24\2014-01-24_005.xad

Created: 1/24/2014 4:35:58 PM
 Modified: 1/24/2014 5:49:12 PM

Electropherogram Summary Continued ...

... Peak table for sample 4 : CDNA Intact

Peak	Aligned Migration Time [s]	Size [bp]	Conc. [pg/μl]	Molarity [pmol/l]	Observations
23	88.02	600	198.47	501.2	
24	89.93	657	1,596.39	3,681.0	
25	91.09	692	1,065.86	2,335.0	
26	92.76	800	311.85	590.7	
27	93.83	877	2,203.37	3,806.6	
28	95.70	1,023	742.42	1,100.1	
29	96.97	1,205	864.61	1,087.1	
30	97.97	1,348	1,812.75	2,038.2	
31	99.04	1,502	404.45	408.1	
32	113.00	10,380	75.00	10.9	Upper Marker

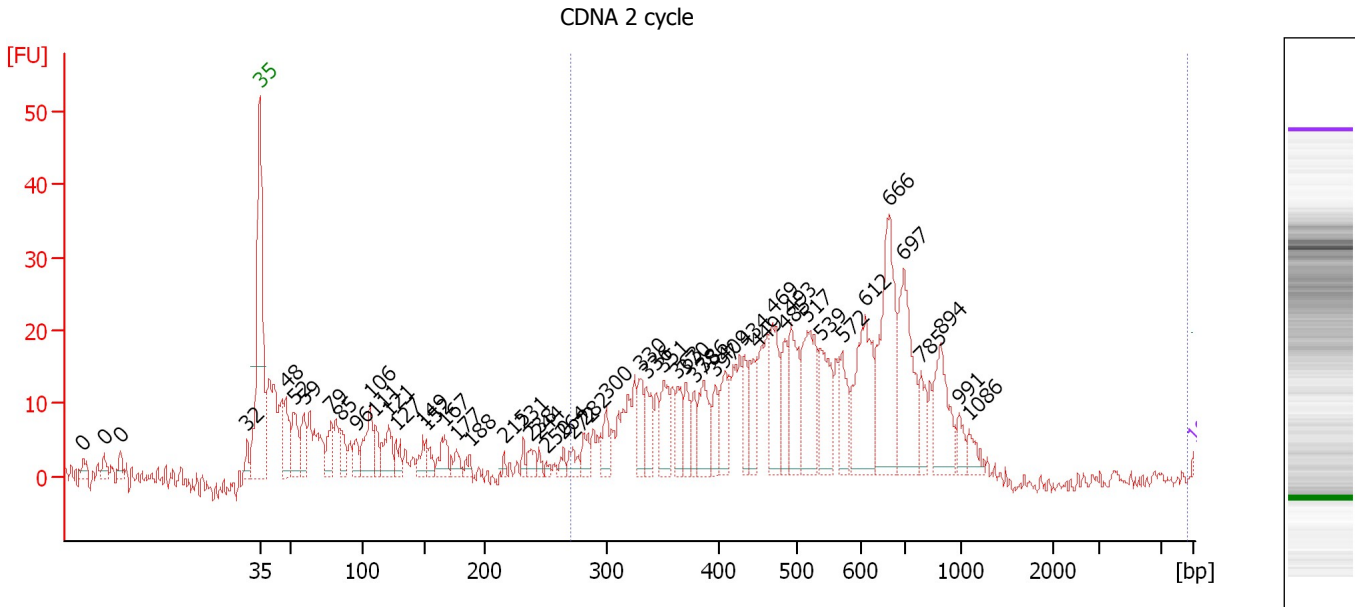
Region table for sample 4 : CDNA Intact

From [bp]	To [bp]	Average Size [bp]	Molarity [pmol/l]	Conc. [pg/μl]	Corr. Area	% of Total	Size distribution in CV [%]	Color
200	1,000	785	10,524.5	5,240.70	108.9	32	16.3	■

Assay Class: High Sensitivity DNA Assay
 Data Path: C:\...ents and Settings\Bioanalyzer\2014-01-24\2014-01-24_005.xad

Created: 1/24/2014 4:35:58 PM
 Modified: 1/24/2014 5:49:12 PM

Electropherogram Summary Continued ...



Setpoint Deviations for sample 5 : CDNA 2 cycle

Height Threshold [FU] : 1

Overall Results for sample 5 : CDNA 2 cycle

Number of peaks found: 52 Corr. Area 1: 550.5
 Noise: 1.3

Peak table for sample 5 : CDNA 2 cycle


Peak	Aligned Migration Time [s]	Size [bp]	Conc. [pg/μl]	Molarity [pmol/l]	Observations
1	29.78	0	0.00	0.0	
2	31.37	0	0.00	0.0	
3	32.57	0	0.00	0.0	
4	42.08	32	0.00	0.0	
5	43.00	35	125.00	5,411.3	Lower Marker
6	44.96	48	6,712.98	212,857.5	
7	45.56	52	6,088.72	176,014.5	
8	46.32	59	4,486.44	114,328.3	
9	48.39	79	4,019.00	77,337.4	
10	49.07	85	3,308.37	58,944.0	
11	50.27	96	2,466.84	38,867.0	
12	51.27	106	7,145.82	101,838.2	
13	51.67	111	3,064.20	41,968.2	
14	52.67	121	4,914.29	61,334.8	
15	53.23	127	2,403.09	28,572.9	
16	55.23	149	2,417.52	24,587.3	
17	55.47	152	1,985.18	19,843.9	
18	56.90	167	3,445.12	31,213.9	
19	57.78	177	1,825.93	15,648.4	
20	58.78	188	1,019.93	8,234.5	
21	61.30	215	611.93	4,308.4	
22	62.78	231	1,061.64	6,950.3	

Assay Class: High Sensitivity DNA Assay
 Data Path: C:\...ents and Settings\Bioanalyzer\2014-01-24\2014-01-24_005.xad


Created: 1/24/2014 4:35:58 PM
 Modified: 1/24/2014 5:49:12 PM

Electropherogram Summary Continued ...

... Peak table for sample 5 : CDNA 2 cycle

Peak	Aligned Migration Time [s]	Size [bp]	Conc. [pg/μl]	Molarity [pmol/l]	Observations
23	63.38	238	1,684.37	10,722.2	
24	63.94	244	783.50	4,862.1	
25	64.46	250	494.95	3,001.3	
26	65.77	264	1,097.68	6,291.6	
27	66.49	272	1,758.24	9,785.3	
28	67.37	282	2,315.48	12,445.3	
29	69.01	300	3,022.33	15,269.9	
30	71.53	330	3,614.68	16,595.6	
31	72.01	336	4,104.62	18,522.9	
32	73.29	351	4,981.27	21,498.8	
33	74.28	363	3,307.21	13,803.5	
34	74.88	370	3,407.70	13,947.3	
35	75.56	378	2,660.46	10,654.9	
36	76.24	386	5,417.57	21,240.4	
37	77.16	397	2,705.61	10,314.1	
38	77.88	409	4,894.22	18,145.6	
39	79.36	434	3,703.54	12,931.1	
40	80.24	449	3,933.03	13,272.6	
41	81.40	469	7,060.97	22,821.1	
42	82.36	485	4,327.56	13,514.0	
43	82.79	493	7,546.68	23,207.1	
44	84.03	517	9,930.73	29,108.5	
45	85.07	539	7,463.95	20,999.3	
46	86.67	572	4,377.84	11,600.1	
47	88.43	612	11,909.20	29,479.3	
48	90.23	666	15,629.05	35,561.0	
49	91.26	697	12,210.55	26,543.6	
50	92.54	785	2,940.37	5,678.0	
51	94.06	894	6,939.77	11,765.7	
52	95.42	991	1,543.71	2,359.6	
53	96.14	1,086	1,545.83	2,157.4	
54	 113.00	10,380	75.00	10.9	Upper Marker

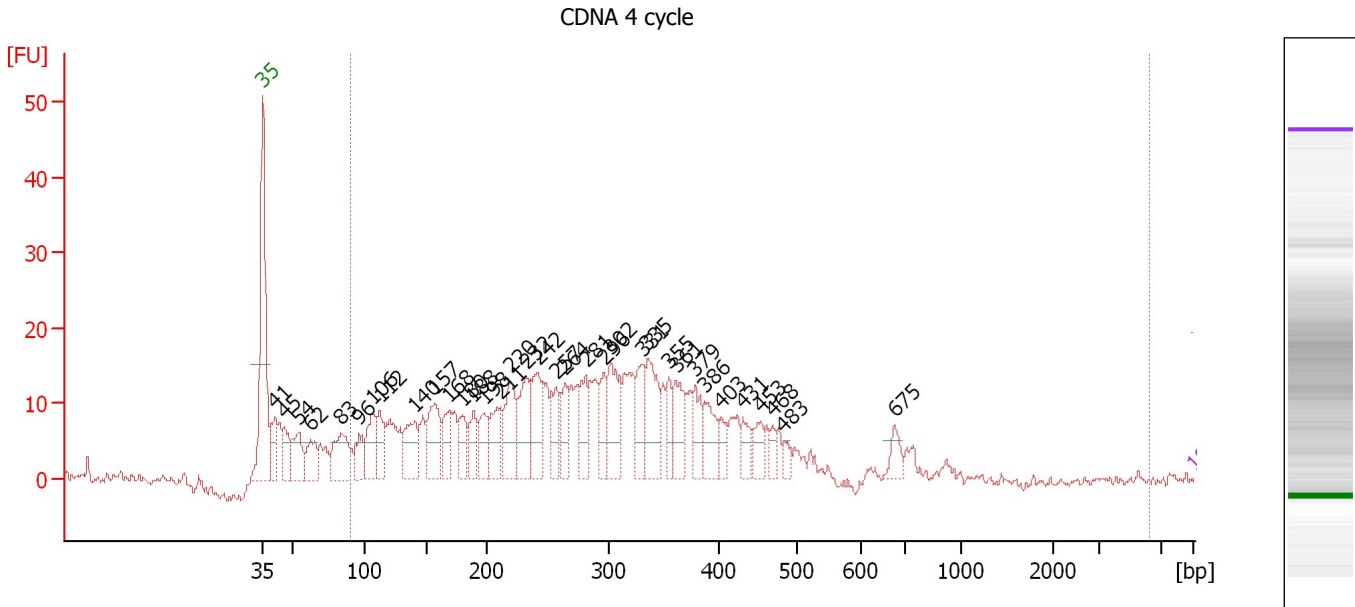
Region table for sample 5 : CDNA 2 cycle

From [bp]	To [bp]	Average Size [bp]	Molarity [pmol/l]	Conc. [pg/μl]	Corr. Area	% of Total	Size distribution in CV [%]	Color
270	9,711	572	604,228.1	187,796.88	550.5	69	73.5	

Assay Class: High Sensitivity DNA Assay
 Data Path: C:\...ents and Settings\Bioanalyzer\2014-01-24\2014-01-24_005.xad

Created: 1/24/2014 4:35:58 PM
 Modified: 1/24/2014 5:49:12 PM

Electropherogram Summary Continued ...



Overall Results for sample 6 : CDNA 4 cycle

Number of peaks found: 35 Corr. Area 1: 536.4
 Noise: 0.6

Peak table for sample 6 : CDNA 4 cycle


Peak	Aligned Migration Time [s]	Size [bp]	Conc. [pg/μl]	Molarity [pmol/l]	Observations
1	43.00	35	125.00	5,411.3	Lower Marker
2	43.92	41	106,326.32	3,926,580.5	
3	44.61	45	95,876.39	3,193,825.8	
4	45.73	54	115,758.09	3,247,310.5	
5	46.61	62	101,138.81	2,463,445.3	
6	48.90	83	160,707.00	2,918,300.5	
7	50.22	96	79,001.83	1,250,396.6	
8	51.23	106	126,823.59	1,815,215.0	
9	51.83	112	91,571.75	1,234,910.3	
10	54.44	140	144,953.34	1,563,287.0	
11	55.96	157	179,046.91	1,727,887.4	
12	57.01	168	102,793.85	925,089.5	
13	58.05	180	85,983.55	724,904.4	
14	58.85	188	89,241.58	717,493.2	
15	59.70	198	95,350.96	731,028.3	
16	60.90	211	118,971.29	854,997.5	
17	61.70	220	176,579.25	1,218,064.8	
18	62.87	232	161,906.80	1,055,423.5	
19	63.75	242	164,403.98	1,028,776.1	
20	65.08	257	94,806.05	559,635.6	
21	65.76	264	78,916.69	452,626.4	
22	67.32	281	116,765.24	628,785.1	
23	68.69	296	81,419.08	416,269.9	
24	69.21	302	179,532.53	899,921.4	
25	71.58	331	113,246.18	518,980.5	

Assay Class: High Sensitivity DNA Assay
 Data Path: C:\...ents and Settings\Bioanalyzer\2014-01-24\2014-01-24_005.xad


Created: 1/24/2014 4:35:58 PM
 Modified: 1/24/2014 5:49:12 PM

Electropherogram Summary Continued ...

... Peak table for sample 6 : CDNA 4 cycle

Peak	Aligned Migration Time [s]	Size [bp]	Conc. [pg/μl]	Molarity [pmol/l]	Observations
26	71.98	335	167,553.52	756,858.5	
27	73.58	355	66,371.81	283,560.7	
28	74.11	361	106,798.63	448,378.9	
29	75.59	379	83,464.17	333,960.5	
30	76.23	386	91,894.71	360,376.5	
31	77.56	403	38,884.74	146,134.8	
32	79.16	431	50,552.52	177,870.3	
33	80.49	453	47,085.98	157,393.7	
34	81.33	468	29,836.06	96,658.6	
35	82.21	483	24,620.30	77,266.4	
36	90.52	675	42,162.27	94,669.2	
37	 113.00	10,380	75.00	10.9	Upper Marker

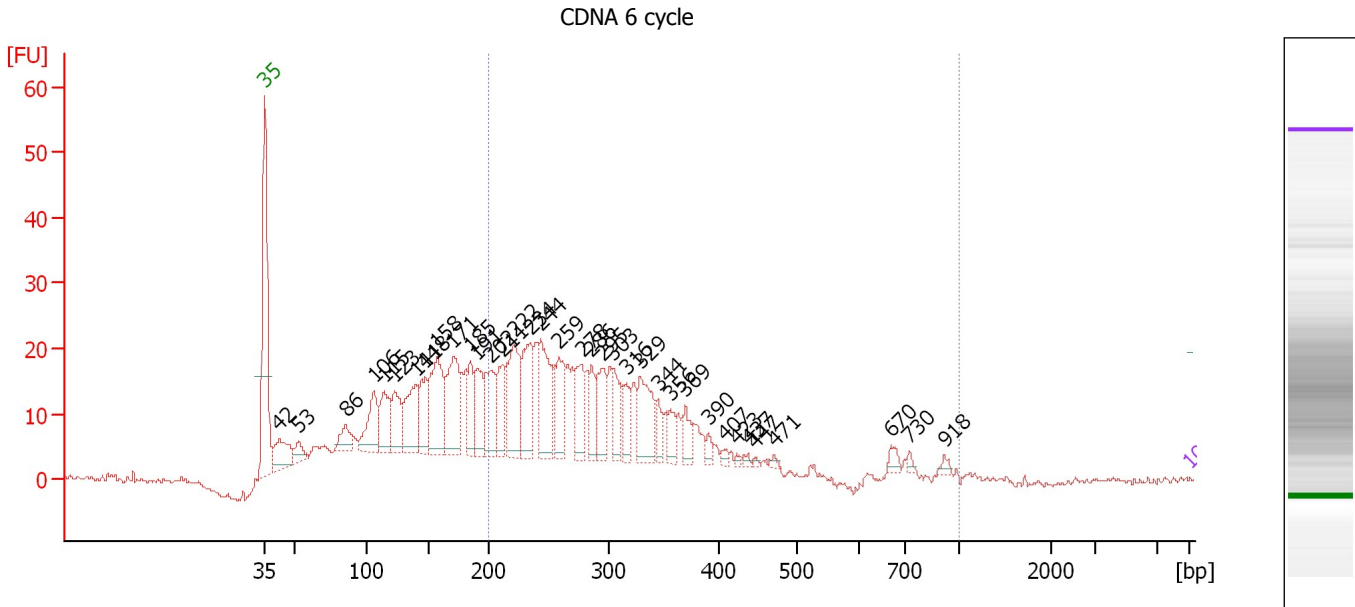
Region table for sample 6 : CDNA 4 cycle

From [bp]	To [bp]	Average Size [bp]	Molarity [pmol/l]	Conc. [pg/μl]	Corr. Area	% of Total	Size distribution in CV [%]	Color
90	6,245	303	28,996,318.0	4,239,019.00	536.4	87	58.9	

Assay Class: High Sensitivity DNA Assay
 Data Path: C:\...ents and Settings\Bioanalyzer\2014-01-24\2014-01-24_005.xad

Created: 1/24/2014 4:35:58 PM
 Modified: 1/24/2014 5:49:12 PM

Electropherogram Summary Continued ...



Setpoint Deviations for sample 7 : CDNA 6 cycle

Height Threshold [FU] : 1

Overall Results for sample 7 : CDNA 6 cycle

Number of peaks found: 36 Corr. Area 1: 433.8
 Noise: 0.4

Peak table for sample 7 : CDNA 6 cycle

Peak	Aligned Migration Time [s]	Size [bp]	Conc. [pg/μl]	Molarity [pmol/l]	Observations
1	43.00	35	125.00	5,411.3	Lower Marker
2	44.09	42	24,197.45	870,575.9	
3	45.58	53	8,744.11	251,660.8	
4	49.13	86	12,133.51	214,783.8	
5	51.27	106	27,635.45	393,831.3	
6	52.04	115	25,772.36	340,780.9	
7	52.80	123	22,307.28	275,113.4	
8	54.46	141	34,411.17	370,576.0	
9	55.10	148	22,998.01	235,989.3	
10	56.03	158	47,361.09	454,936.1	
11	57.24	171	45,563.37	403,934.6	
12	58.57	185	18,404.17	150,407.3	
13	59.10	191	24,256.66	192,315.4	
14	60.11	202	27,251.07	204,300.6	
15	60.95	211	22,753.80	163,076.1	
16	61.88	222	42,214.68	288,636.9	
17	63.05	234	35,567.00	229,855.2	
18	63.90	244	36,677.10	227,980.6	
19	65.27	259	24,378.34	142,712.2	
20	67.01	278	21,234.17	115,782.3	
21	67.73	286	14,317.36	75,889.1	
22	68.54	295	20,533.36	105,564.1	

Assay Class: High Sensitivity DNA Assay
 Data Path: C:\...ents and Settings\Bioanalyzer\2014-01-24\2014-01-24_005.xad


Created: 1/24/2014 4:35:58 PM
 Modified: 1/24/2014 5:49:12 PM

Electropherogram Summary Continued ...

... Peak table for sample 7 : CDNA 6 cycle

Peak	Aligned Migration Time [s]	Size [bp]	Conc. [pg/μl]	Molarity [pmol/l]	Observations
23	69.31	303	14,310.03	71,459.6	
24	70.35	316	11,370.88	54,525.7	
25	71.40	329	28,713.98	132,426.3	
26	72.73	344	7,922.34	34,846.5	
27	73.70	356	8,524.36	36,273.8	
28	74.79	369	10,119.94	41,542.0	
29	76.53	390	3,871.28	15,044.9	
30	77.78	407	2,161.34	8,047.7	
31	78.71	423	1,238.87	4,439.7	
32	79.55	437	1,612.91	5,588.7	
33	80.12	447	928.67	3,148.3	
34	81.53	471	1,540.55	4,954.8	
35	90.37	670	3,972.99	8,983.3	
36	91.78	730	1,855.08	3,852.1	
37	94.40	918	2,066.34	3,410.4	
38	113.00	10,380	75.00	10.9	Upper Marker

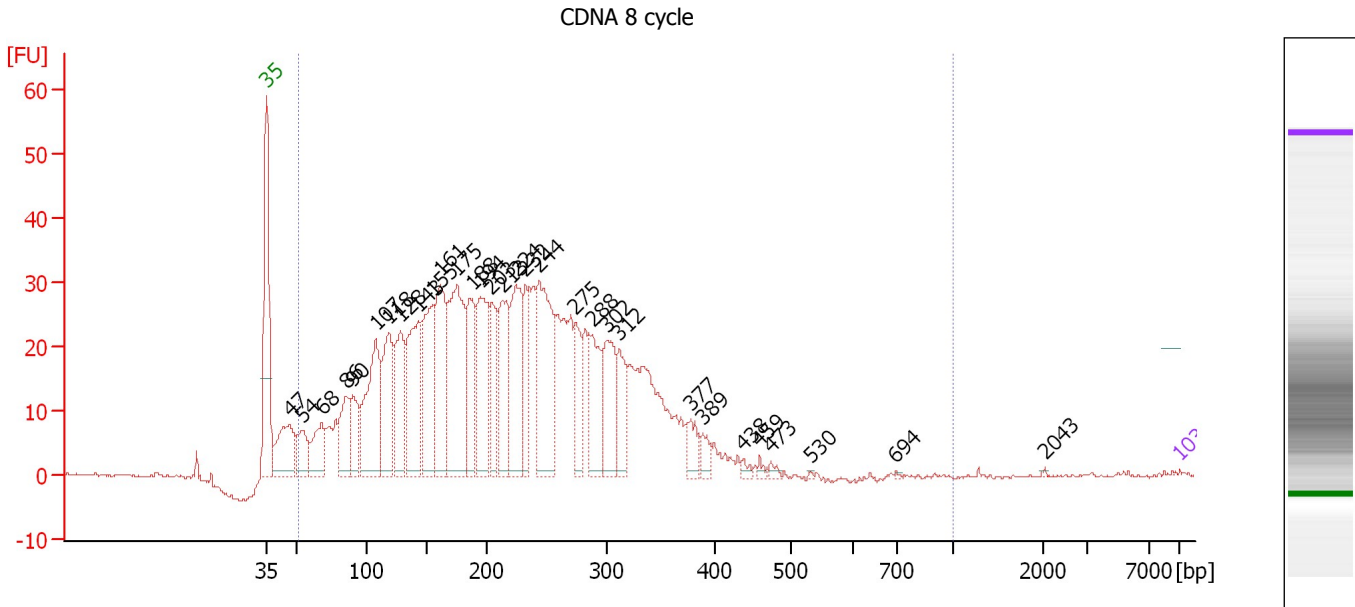
Region table for sample 7 : CDNA 6 cycle

From [bp]	To [bp]	Average Size [bp]	Molarity [pmol/l]	Conc. [pg/μl]	Corr. Area	% of Total	Size distribution in CV [%]	Color
200	1,000	314	3,067,787.8	570,595.00	433.8	56	37.7	

Assay Class: High Sensitivity DNA Assay
 Data Path: C:\...ents and Settings\Bioanalyzer\2014-01-24\2014-01-24_005.xad

Created: 1/24/2014 4:35:58 PM
 Modified: 1/24/2014 5:49:12 PM

Electropherogram Summary Continued ...



Setpoint Deviations for sample 8 : CDNA 8 cycle

Height Threshold [FU] : 1

Overall Results for sample 8 : CDNA 8 cycle

Number of peaks found: 31 Corr. Area 1: 1,029.4
 Noise: 0.2

Peak table for sample 8 : CDNA 8 cycle

Peak	Aligned Migration Time [s]	Size [bp]	Conc. [pg/μl]	Molarity [pmol/l]	Observations
1	43.00	35	125.00	5,411.3	Lower Marker
2	44.80	47	7,211.26	233,760.2	
3	45.70	54	3,909.97	110,297.5	
4	47.25	68	4,976.96	110,696.7	
5	49.13	86	5,823.81	103,124.6	
6	49.62	90	4,816.08	80,973.8	
7	51.38	107	13,781.89	194,311.1	
8	52.40	118	10,405.81	133,068.6	
9	53.30	128	9,171.71	108,415.1	
10	54.65	143	13,566.65	144,024.3	
11	55.75	155	11,598.76	113,626.0	
12	56.36	161	12,550.10	117,862.1	
13	57.59	175	18,468.03	160,192.1	
14	58.77	188	8,568.64	69,214.2	
15	59.39	194	10,360.13	80,811.2	
16	60.20	203	6,250.74	46,615.7	
17	61.10	213	9,629.38	68,484.0	
18	62.12	224	10,856.80	73,350.3	
19	62.86	232	5,859.66	38,212.3	
20	63.88	244	14,415.21	89,674.6	
21	66.70	275	4,825.28	26,631.2	
22	67.97	288	6,691.00	35,147.0	

Assay Class: High Sensitivity DNA Assay
 Data Path: C:\...ents and Settings\Bioanalyzer\2014-01-24\2014-01-24_005.xad

Created: 1/24/2014 4:35:58 PM
 Modified: 1/24/2014 5:49:12 PM

Electropherogram Summary Continued ...

... Peak table for sample 8 : CDNA 8 cycle

Peak	Aligned Migration Time [s]	Size [bp]	Conc. [pg/μl]	Molarity [pmol/l]	Observations
23	69.15	302	7,226.52	36,305.4	
24	70.05	312	4,282.22	20,772.2	
25	75.49	377	1,907.13	7,656.3	
26	76.43	389	1,278.86	4,985.4	
27	79.57	438	443.89	1,536.9	
28	80.80	459	385.19	1,272.6	
29	81.66	473	364.65	1,167.4	
30	84.68	530	88.05	251.5	
31	91.18	694	76.48	166.9	
32	102.66	2,043	68.74	51.0	
33	113.00	10,380	75.00	10.9	Upper Marker

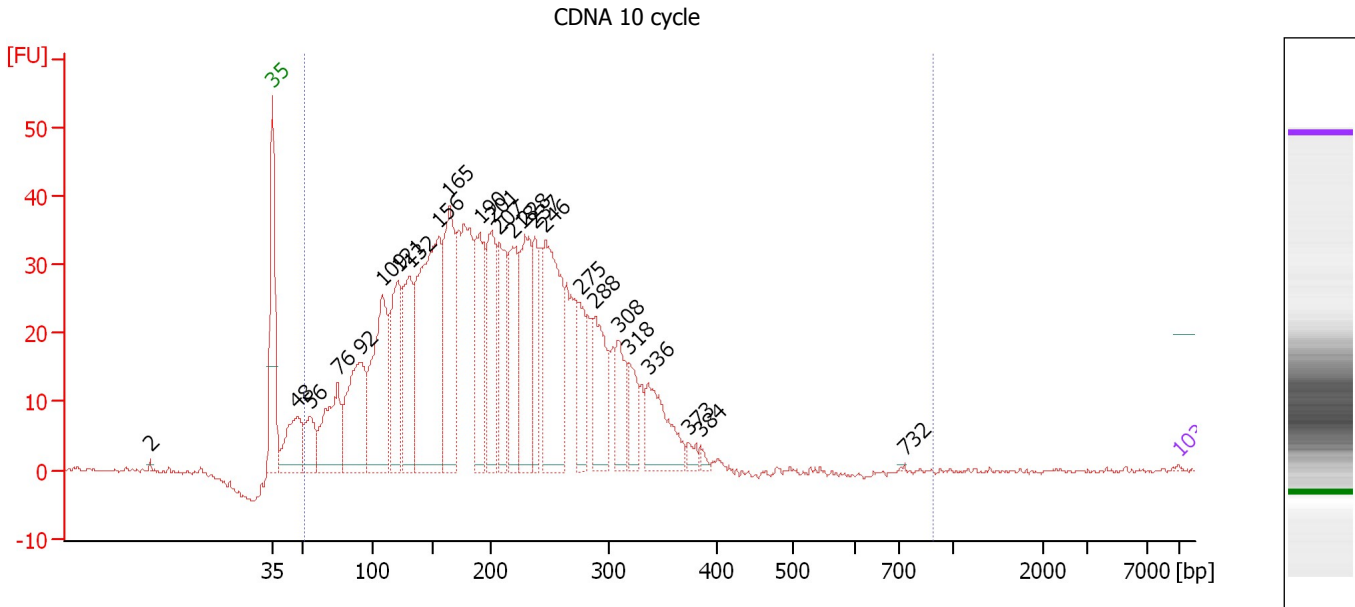
Region table for sample 8 : CDNA 8 cycle

From [bp]	To [bp]	Average Size [bp]	Molarity [pmol/l]	Conc. [pg/μl]	Corr. Area	% of Total	Size distribution in CV [%]	Color
51	1,000	219	2,258,389.3	248,878.98	1,029.4	97	38.6	

Assay Class: High Sensitivity DNA Assay
 Data Path: C:\...ents and Settings\Bioanalyzer\2014-01-24\2014-01-24_005.xad

Created: 1/24/2014 4:35:58 PM
 Modified: 1/24/2014 5:49:12 PM

Electropherogram Summary Continued ...



Setpoint Deviations for sample 9 : CDNA 10 cycle

Height Threshold [FU] : 1

Overall Results for sample 9 : CDNA 10 cycle

Number of peaks found: 25 Corr. Area 1: 1,120.5
 Noise: 0.3

Peak table for sample 9 : CDNA 10 cycle

Peak	Aligned Migration Time [s]	Size [bp]	Conc. [pg/μl]	Molarity [pmol/l]	Observations
1	33.58	2	0.00	0.0	
2	43.00	35	125.00	5,411.3	Lower Marker
3	44.93	48	7,155.97	227,638.3	
4	45.92	56	4,815.14	130,753.3	
5	48.06	76	10,681.13	213,909.6	
6	49.87	92	15,151.77	248,294.7	
7	51.52	109	19,385.28	269,489.2	
8	52.67	121	12,899.15	160,966.9	
9	53.62	132	12,676.18	145,916.7	
10	55.88	156	32,677.14	317,192.2	
11	56.66	165	17,637.25	162,351.4	
12	59.01	190	13,387.11	106,683.0	
13	60.00	201	11,834.98	89,263.8	
14	60.53	207	10,002.36	73,297.6	
15	61.52	218	10,753.66	74,875.0	
16	62.51	228	12,913.47	85,644.0	
17	63.25	237	6,848.77	43,860.1	
18	64.07	246	19,999.74	123,366.5	
19	66.74	275	6,191.44	34,111.5	
20	67.94	288	8,272.67	43,504.4	
21	69.71	308	4,905.09	24,111.6	
22	70.49	318	3,748.01	17,880.9	

Assay Class: High Sensitivity DNA Assay
 Data Path: C:\...ents and Settings\Bioanalyzer\2014-01-24\2014-01-24_005.xad


Created: 1/24/2014 4:35:58 PM
 Modified: 1/24/2014 5:49:12 PM

Electropherogram Summary Continued ...

... Peak table for sample 9 : CDNA 10 cycle

Peak	Aligned Migration Time [s]	Size [bp]	Conc. [pg/ μ l]	Molarity [pmol/l]	Observations
23	72.01	336	7,979.42	36,001.6	
24	75.10	373	1,030.92	4,190.3	
25	76.00	384	512.82	2,025.5	
26	91.81	732	72.85	150.9	
27	113.00	10,380	75.00	10.9	Upper Marker

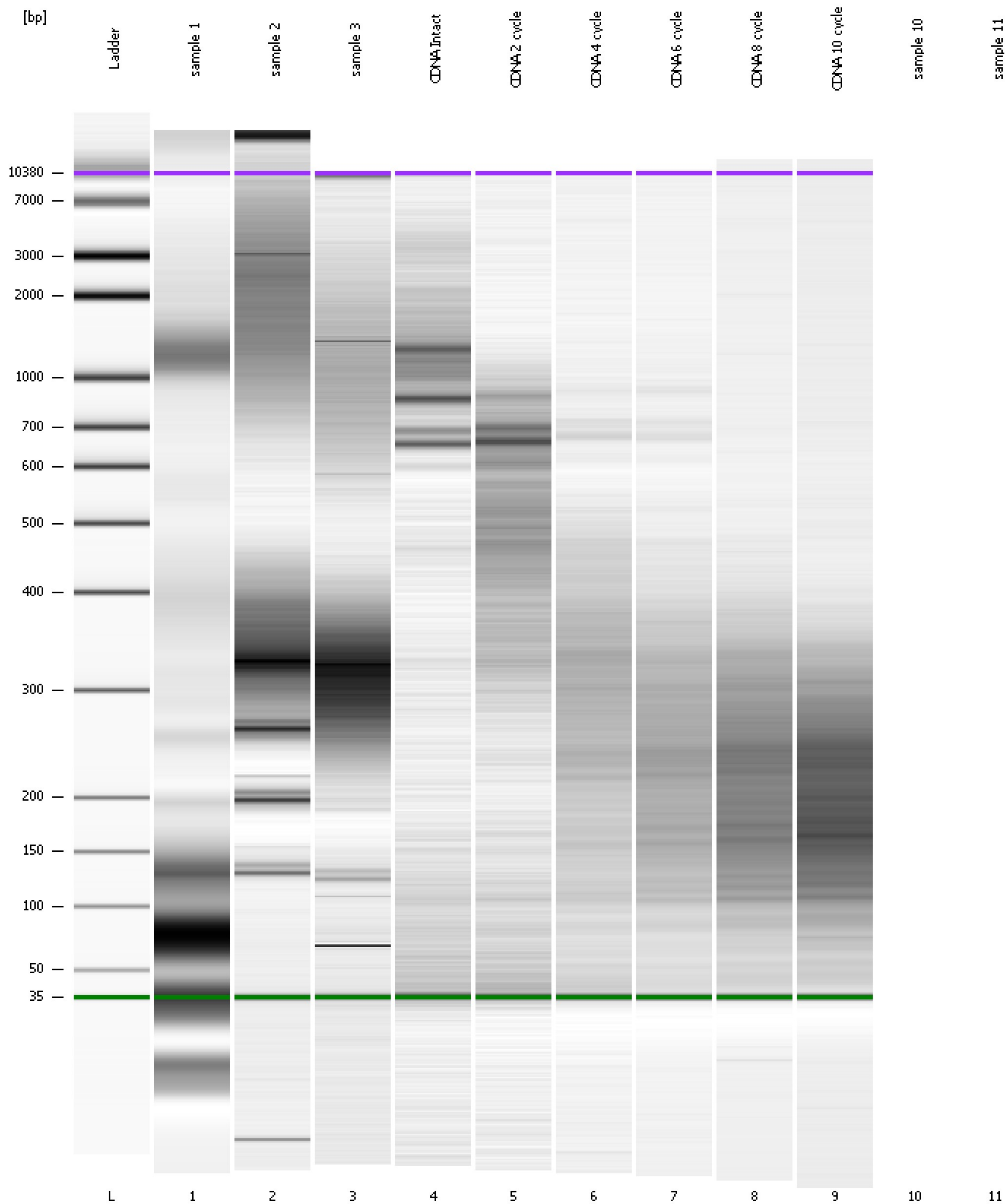
Region table for sample 9 : CDNA 10 cycle

From [bp]	To [bp]	Average Size [bp]	Molarity [pmol/l]	Conc. [pg/ μ l]	Corr. Area	% of Total	Size distribution in CV [%]	Color
51	891	203	2,703,985.8	287,005.44	1,120.5	98	36.7	

Assay Class: High Sensitivity DNA Assay
Data Path: C:\...ents and Settings\Bioanalyzer\2014-01-24\2014-01-24_005.xad

Created: 1/24/2014 4:35:58 PM
Modified: 1/24/2014 5:49:12 PM

Gel Image



Assay Class: High Sensitivity DNA Assay
Data Path: C:\...ents and Settings\Bioanalyzer\2014-01-24\2014-01-24_005.xad

Created: 1/24/2014 4:35:58 PM
Modified: 1/24/2014 5:49:12 PM

Invalid Samples

Sample 10 has not been run, no results available.

Sample 11 has not been run, no results available.